

AGES 8+



STUDIO SERIES



TRANSFORMERS

BUMBLEBEE\*\*  
SHOWCASE HELMET

**BUTTON OPERATION**

*When Not Connected to Bluetooth*

**BUTTON 1**

Single tap, double tap, and press and hold for different sound effects

**BUTTON 2**

Single tap for sound effects

**SPEAKER ACTIVATION & MUSIC DETECTION** Bluetooth

**TURN ON**

Press and hold Button 2 to activate Bluetooth wireless technology detection. Open Bluetooth wireless technology detection setting on smart device (not included) and pair with helmet. Sync for built-in speaker activation. Press play on smart device to begin music.

NOTE: Music will only play when helmet is connected to device via Bluetooth

**TURN OFF**

Press and hold Button 2 to disconnect Bluetooth from smart device.

TIPS: If there is no Bluetooth wireless technology connection within 2 minutes, Bluetooth feature will shut down. If there is a Bluetooth connection but no music played within 3 minutes, Bluetooth feature will shut down. If no connection is made, press and hold Button 2 to wake up helmet and attempt to sync again.

NOTE: Radio static sound plays at regular intervals to indicate Bluetooth functionality is active. When helmet is connected or disconnected, a detection sound will play.

**BUTTON OPERATION**

*When Music is Playing*

**BUTTON 1**

Single tap, double tap, or press and hold to activate DJ sounds

**BUTTON 2**

Single tap to skip to next track  
Double tap to pause/play

NOTE: Helmet LEDs flash in response to sound effects  
NOTE: Not for use in complete darkness.



BUTTON 1

BUTTON 2

Frequency band(s): e.g. 2.405-2.480GHz  
Maximum radio frequency power transmitted, e.g. -2.56m

**FCC STATEMENT**

This device complies with Part 15 of the FCC Rules. Operation is subject to the following two conditions: (1) This device may not cause harmful interference, and (2) this device must accept any interference received, including interference that may cause undesired operation.

**NOTE:** This equipment has been tested and found to comply with the limits for a Class B digital device, pursuant to Part 15 of the FCC Rules. These limits are designed to provide reasonable protection against harmful interference in a residential installation. This equipment generates, uses and can radiate radio frequency energy, and, if not installed and used in accordance with the instructions, may cause harmful interference to radio communications. However, there is no guarantee that interference will not occur in a particular installation. If this equipment does cause harmful interference to radio or television reception, which can be determined by turning the equipment off and on, the user is encouraged to try to correct the interference by one or more of the following measures:

- Reorient or relocate the receiving antenna.
- Increase the separation between the equipment and the receiver.
- Consult the dealer or an experienced radio/TV technician for help.

**CAUTION:**

Changes or modifications to this unit not expressly approved by the party responsible for compliance could void the user's authority to operate the equipment.

**CAN ICES-3 (B)/NMB-3(B)**

This device complies with Industry Canada's licence-exempt RSSs. Operation is subject to the following two conditions:

- (1) This device may not cause interference; and
- (2) This device must accept any interference, including interference that may cause undesired operation of the device.

The Bluetooth® word mark and logos are registered trademarks owned by the Bluetooth SIG, Inc. and any use of such marks by Hasbro is under license. Other trademarks and trade names are those of their respective owners.

Product and colors may vary. Retain this information for future reference.  
© 2017 Paramount Pictures Corporation. All Rights Reserved.  
®\* and/or TM\* & © 2017 Hasbro, Pawtucket, RI 02861-1059 USA. All Rights Reserved. TM & ® denote U.S. Trademarks. US/CANADA TEL. 1-800-255-05516.

TRANSFORMERS.COM  
E0704 PN0002042



Customer Code: 5008/E07040000\_353448\_TRA\_MV6\_FIRST\_EDITION\_HELMET\_FAR.indd  
2017-09-01 13:09:13/Anne/2017-09-07/Gracol 2006

源創設計製作(深圳)有限公司  
www.artechgraphics.com.hk | info@artechgraphics.com.hk | Tel: 755-3322 8878

K

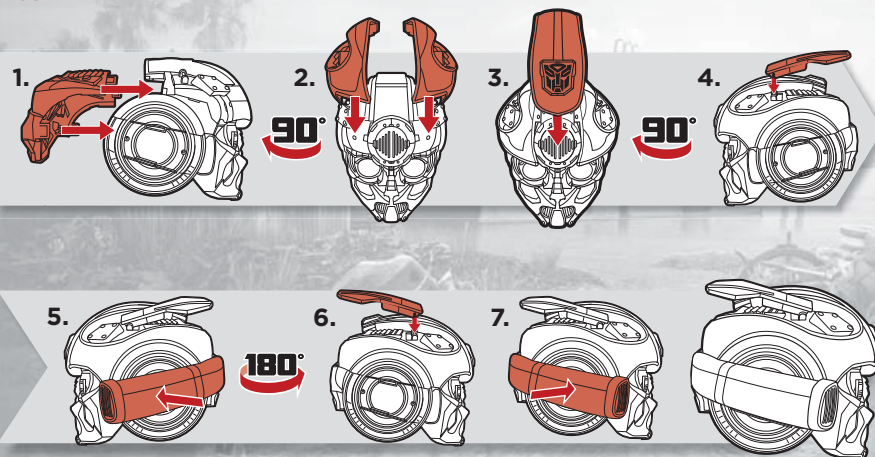
200C

PMS COLOUR FOR REFERENCE ONLY.  
PLEASE REFER TO PANTONE GUIDE BOOK.

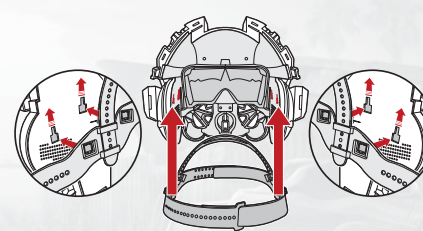


200C

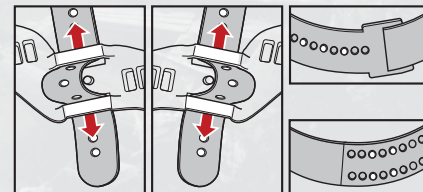
## ASSEMBLY



## ATTACHING STRAPS



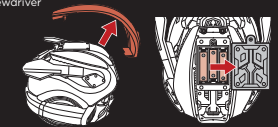
## TO ADJUST



## TO INSTALL BATTERIES

Use a Phillips/cross head screwdriver (not included).

**x3 1.5V AA ALKALINE BATTERIES**



## IMPORTANT: BATTERY INFORMATION

### ⚠ CAUTION:

1. TO AVOID BATTERY LEAKAGE
  - a. Always follow the instructions carefully. Use only batteries specified and be sure to insert them correctly by matching the + and - polarity markings.
  - b. Do not mix old batteries and new batteries or standard (carbon-zinc) with alkaline batteries.
  - c. Remove exhausted or dead batteries from the product.
  - d. Remove batteries if product is not to be played with for a long time.
  - e. Do not short-circuit the supply terminals.
  - f. RECHARGEABLE BATTERIES: Do not mix these with any other types of batteries. Always remove from the product before recharging. Recharge batteries under adult supervision. DO NOT RECHARGE OTHER TYPES OF BATTERIES.
2. Should this product cause, or be affected by, local electrical interference, move it away from other electrical equipment. Reset (switching off and back on again or removing and re-inserting batteries) if necessary.

**ARTECH**

Customer Code: 5008/E07040000\_353448\_TRA\_MV6\_FIRST\_EDITION\_HELMET\_FAR.indd  
2017-09-01 13:33:33/Anne/2017-09-07/Gracol 2006

PMS COLOUR FOR REFERENCE ONLY.  
PLEASE REFER TO PANTONE GUIDE BOOK.

源創設計有限公司 (源創) 有限公司  
www.artechgraphics.com.hk | info@artechgraphics.com.hk | Tel: 755-8322 8039

K 200C



200C