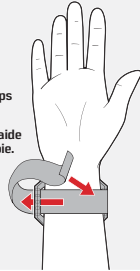


TIPS • INFOS UTILES

- Force Link goes to sleep after 5 minute of non-use.
 - If toy does not react to Force Link, adjust hand placement to match image.
 - When battery power is low, Force Link will issue a phrase indicating it is time to change the batteries.
 - If Force Link does not respond to tapping, try tapping multiple times or tapping harder.
 - If product does not respond to forward/side-to-side movement, try moving faster.
 - Only toys with the Force Link logo are compatible with Force Link technology.
- Le Force Link entre en mode veille après 5 minutes d'inactivité.
 - Si le jouet ne réagit pas au Force Link, s'assurer de positionner la main comme sur l'image.
 - Lorsque les piles sont faibles, le Force Link annonce verbalement qu'il est temps de changer les piles.
 - Si le Force Link ne réagit pas au toucher, insister en appuyant plusieurs fois ou plus fort.
 - Si le produit ne réagit pas aux mouvements vers l'avant ou de côté, faire des mouvements plus rapides.
 - Seuls les jouets avec le logo Force Link sont compatibles avec la technologie Force Link.

Adjust straps
to fit.
Ajuste-le à l'aide
de la courroie.



STAR WARS™

AGE 4+

FCC STATEMENT

This device complies with Part 15 of the FCC Rules. Operation is subject to the following two conditions:

(1) This device may not cause harmful interference, and (2) this device must accept any interference received, including interference that may cause undesired operation.

NOTE: This equipment has been tested and found to comply with the limits for a Class B digital device, pursuant to Part 15 of the FCC Rules. These limits are designed to provide reasonable protection against harmful interference in a residential installation. This equipment generates, uses and can radiate radio frequency energy, and, if not installed and used in accordance with the instructions, may cause harmful interference to radio communications. However, there is no guarantee that interference will not occur in a particular installation. If this equipment does cause harmful interference to radio or television reception, which can be determined by turning the equipment off and on, the user is encouraged to try to correct the interference by one or more of the following measures:

- Reorient or relocate the receiving antenna.
- Increase the separation between the equipment and the receiver.
- Consult the dealer or an experienced radio/TV technician for help.

CAUTION: Changes or modifications to this unit not expressly approved by the party responsible for compliance could void the user's authority to operate the equipment.

CAN ICES-3 (B)/NMB-3(B)

DÉCLARATION DE LA FEDERAL COMMUNICATIONS COMMISSION

Cet équipement est conforme à la Section 15 des règlements de la FCC. Son fonctionnement est soumis aux deux conditions suivantes:

(1) Cet équipement ne peut causer d'interférence nuisible; (2) cet équipement doit pouvoir fonctionner même s'il capte de l'interférence, incluant celle pouvant provoquer un fonctionnement indésirable.

NOTE: Cet équipement a été testé et est conforme aux limites d'un instrument numérique de classe B de la Section 15 des règlements de la FCC. Ces limites ont été établies pour assurer une protection raisonnable contre les brouillages préjudiciables dans une installation résidentielle. Cet équipement produit, utilise et peut rayonner des fréquences radioélectriques et, s'il n'est pas monté et utilisé conformément aux instructions, peut créer un brouillage préjudiciable aux radiocommunications. Cependant, ces limites ne garantissent pas qu'il n'y aura pas d'interférence dans une installation particulière. Si ce jouet produit un brouillage préjudiciable aux transmissions télévisuelles ou radiophoniques, ce qui peut se déceler à la mise en marche et à l'arrêt du jouet, l'utilisateur devrait corriger la situation en suivant une ou plusieurs des mesures suivantes:

- reorienter ou replacer l'antenne de réception;
- augmenter la distance entre l'équipement et le récepteur;
- demander l'aide d'un marchand ou d'un technicien en radio et télévision.

ATTENTION: Toute modification ou altération apportée à cet appareil, sans autorisation expresse de la partie responsable de sa conformité, peut révoquer à l'utilisateur son droit de l'utiliser.

Product and colors may vary. Retain this information for future reference. Le produit et les couleurs peuvent varier. Conservez cette information pour référence ultérieure. © & ™ Lucasfilm Ltd. ®* and/or TM* & © 2017 Hasbro, Pawtucket, RI 02861-1059 USA. All Rights Reserved. Tous droits réservés. TM & ® denote U.S. Trademarks. HASBRO CANADA, LONGUEUIL, QC, CANADA J4G 1G2. US/CANADA TEL. 1-800-255-5516.



FORCE LINK
ACTIVATED. ACTIVATION. ACTIVATION. ACTIVATION.

FORCE LINK™ STARTER SET KIT DE BASE FORCE LINK

C1364 PN00014395

STARWARS.HASBRO.COM STARWARS.COM

ARTECH
ART & GRAPHICS

Customer Code: 5008/C13640080_346824M_SW_GAL_E8_STARTER_SET_INST_FAR.indd
2017-02-06/Anne/2017-02-28/EP1_CT-Coated

滿德設計製作(深圳)有限公司
www.artechgraphics.com.hk | info@artechgraphics.com.hk | Tel: 755-3322 8070

K 1795C

PMS COLOUR FOR REFERENCE ONLY.
PLEASE REFER TO PANTONE GUIDE BOOK.

COLOR MATCHING
U.S. VERSION

1795C

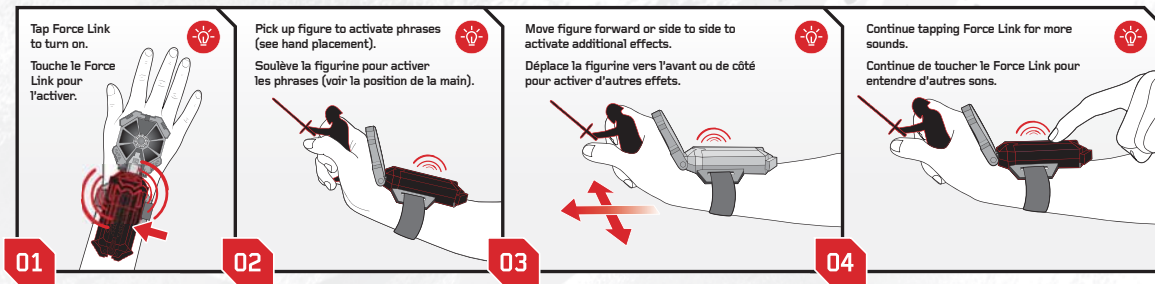
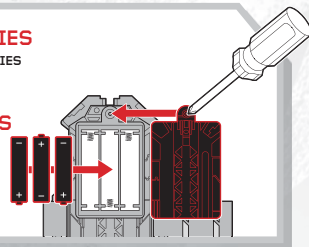
STAR WARS

TO INSERT BATTERIES

3X 1.5V AAA ALKALINE BATTERIES
Use a Phillips/cross head screwdriver (not included).

INSÉRER LES PILES

**3 PILES ALCALINES
AAA DE 1,5 V**
Utiliser un tournevis
cruciforme (non inclus).



IMPORTANT: BATTERY INFORMATION

⚠ CAUTION:

- As with all small batteries, the batteries used with this product should be kept away from small children who still put things in their mouths. If they are swallowed, promptly see a doctor and have the doctor phone (202) 625-3333 collect. If you reside outside the United States, have the doctor call your local poison control center.
- TO AVOID BATTERY LEAKAGE
 - Always follow the instructions carefully. Use only batteries specified and be sure to insert them correctly by matching the + and - polarity markings.
 - Do not mix old batteries and new batteries or standard (carbon-zinc) with alkaline batteries.
 - Remove exhausted or dead batteries from the product.
 - Remove batteries if product is not to be played with for a long time.
 - Do not short-circuit the supply terminals.
 - RECHARGEABLE BATTERIES: Do not mix these with any other types of batteries. Always remove from the product before recharging. Recharge batteries under adult supervision. DO NOT RECHARGE OTHER TYPES OF BATTERIES.
- Should this product cause, or be affected by, local electrical interference, move it away from other electrical equipment. Reset (switching off and back on again or removing and re-inserting batteries) if necessary.

DÉTAILS IMPORTANTS SUR LES PILES

⚠ ATTENTION:

- Comme pour toute pile de petite taille, garder celles utilisées avec ce produit hors de la portée des enfants qui portent encore des objets à leur bouche. Si elles sont avalées, se rendre sans tarder chez un médecin et lui demander d'appeler le centre antipoison local.
- POUR ÉVITER LES RISQUES DE FUITES
 - Suivre les directives. N'utiliser que les piles recommandées et les insérer en respectant le sens des polarités + et - inscrites sur le produit.
 - Ne pas utiliser de vieilles piles avec des piles neuves, ni de piles alcalines avec des piles standard au carbone-zinc.
 - Toujours retirer les piles faibles ou déchargées du produit.
 - Retirer les piles si le produit ne sera pas utilisé pendant un certain temps.
 - Ne pas court-circuiter les bornes d'alimentation.
 - PILES RECHARGEABLES: Ne pas utiliser celles-ci avec d'autres types de piles. Les retirer du produit avant de les recharger sous la surveillance d'un adulte. NE PAS RECHARGER LES AUTRES TYPES DE PILES.
- Si ce produit provoque de l'interférence ou s'il en est affecté, il faut l'éloigner d'autres appareils électriques et procéder, si nécessaire, à une remise à l'état initial en l'éteignant et en le rallumant, ou encore en retirant et réinsérant ses piles.

ARTECH
ARTOGRAPHICS

Customer Code: 5008/C13640080_346824M_SW_GAL_E8_STARTER_SET_INST_FAR.indd
2017-02-0660/Anne/2017-02-28/EP1_CT-Coated

源能設計制作(深圳)有限公司
www.artechgraphics.com.hk | info@artechgraphics.com.hk | Tel: 755-3322 8970

K 1795C

PMS COLOUR FOR REFERENCE ONLY.
PLEASE REFER TO PANTONE GUIDE BOOK.

COLOR MATCHING
U.S. VERSION



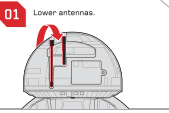
This device complies with Industry Canada's license-exempt RSSs. Operation is subject to the following two conditions: (1) this device may not cause interference, and (2) this device must accept any interference, including interference that may cause undesired operation of the device.

Le présent appareil est conforme aux CNR d'Industrie Canada applicables aux appareils radio exempts de licence. L'exploitation est autorisée aux deux conditions suivantes : (1) l'appareil ne doit pas produire de brouillage, et (2) l'appareil doit accepter tout brouillage radioélectrique subi, même si le brouillage est susceptible d'en compromettre le fonctionnement.

PN00019288

TO OPEN - BACK VIEW

01 Lower antennas.



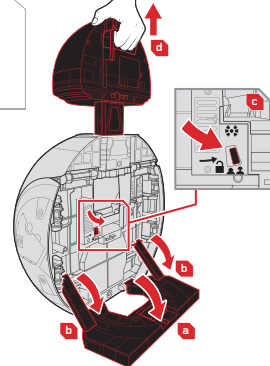
02

a Fold down panel.

b Lower stabilizer arms.

c Unlock.


d Pull head up.



03 Press button.

04 Push back and over to open.

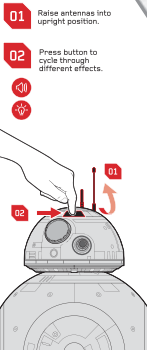
05 Raise stabilizer in back.



EXTERIOR PLAY

01 Raise antennas into upright position.

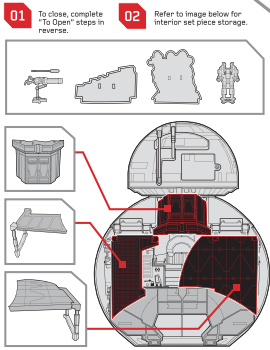
02 Press button to cycle through different effects.



TO CLOSE & STORE

01 To close, complete "To Open" steps in reverse.

02 Refer to image below for interior set piece storage.



FCC STATEMENT
This device complies with Part 15 of the FCC Rules. Operation is subject to the following two conditions: (1) This device may not cause harmful interference, and (2) this device must accept any interference received, including interference that may cause undesired operation.
NOTE: This equipment has been tested and found to comply with the limits for Class B digital device, pursuant to part 15 of the FCC Rules. These limits are designed to provide reasonable protection against harmful interference in a residential installation. This equipment generates, uses and can radiate radio frequency energy and, if not shielded and used in accordance with the instructions, may cause harmful interference to radio communications. However, there are no guarantees that interference will not occur in a particular installation. This equipment does not cause harmful interference to radio communications when used in accordance with the instructions. If you are experiencing interference, you may wish to consult the manufacturer's representative for suggestions.

- Remove or relocate the receiving antenna.
- Increase the separation between the equipment and the receiver.
- Consult the dealer or an experienced radio/TV technician for help.

CAUTION: Changes or modifications to this unit not expressly approved by the party responsible for compliance could void the user's authority to operate this equipment.

CLASS B (50% MFR)

This device complies with Industry Canada license-exempt RSS 210 standard. Operation is subject to the following two conditions:
(1) The device may not cause harmful interference, and (2) the device must accept any interference received, including interference that may cause undesired operation of the device.
Customer Frequency: 15.6 MHz (BPS)

TIPS

- Force Link goes to sleep after 5 minutes of non-use.
- If toy does not react to Force Link, adjust hand placement to match image.
- Only toys with the Force Link logo are compatible with Force Link technology.

Some games may require additional support.
Product and colors may vary. Refer this information for future reference. © & ™ Lucasfilm Ltd. (TM) and/or TM & © 2017 Hasbro, Pawtucket, RI 02861-1034 USA. All Rights Reserved. TM & © denote U.S. Trademarks. U.S. Pat. Pend. US/CANADA/TEL. 1-800-295-3338

STAR WARS

WARNING:
CHOKING HAZARD - Small parts.
Not for children under 3 years.

AGES 4+

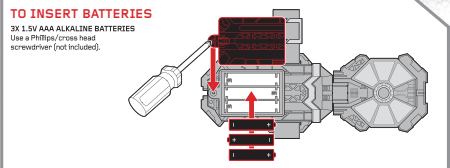
FORCE LINK
RECHARGEABLE LIGHT Saber™

SUPREME LEADER SNOKE™
ELITE PRAETORIAN GUARD
(WITH SINGLE BLADE)™
BB-8™
2-IN-1 MEGA PLAYSET



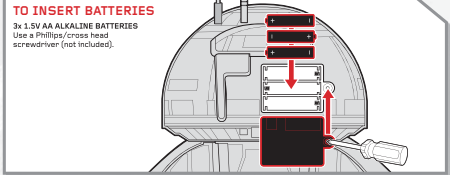
TO INSERT BATTERIES

3x 1.5V AAA ALKALINE BATTERIES
Use a Phillips/cross head screwdriver (not included).



TO INSERT BATTERIES

3x 1.5V AA ALKALINE BATTERIES
Use a Phillips/cross head screwdriver (not included).



IMPORTANT: BATTERY INFORMATION

CAUTION:

- As with all small batteries, the batteries used with this product should be kept away from small children who still put things in their mouths. If they are swallowed, promptly see a doctor and have the doctor phone (202) 625-3333 collect. If you reside outside the United States, have the doctor call your poison control center.
- AVOID BATTERY LEAKAGE.**
 - Always follow the instructions carefully. Use only batteries specified and be sure to insert them correctly by matching the + and - polarity markings.
 - Do not mix old batteries and new batteries or standard (carbon-zinc) with alkaline batteries.
 - Remove exhausted or dead batteries from the product.
 - Remove batteries if product is not to be played with for a long time.
 - Do not short-circuit the supply terminals.
 - RECHARGEABLE BATTERIES:** Do not mix these with any other types of batteries. Always remove from the product before recharging. Recharge batteries under adult supervision. **DO NOT RECHARGE OTHER TYPES OF BATTERIES.**
- Should this product cause, or be affected by, local electrical interference, move it away from other electrical equipment. Reset (switching off and back on again or removing and re-inserting batteries) if necessary.

ARTECH Customer Code: 5080/C12S30000_347529_SW_GAL_EB_FLAGSHIP_SET_WITH_FORCELINK_INST_FAR_RC.indd
2017-04-03 11:11:11/Amne/2017-04-05/Gracol 2006

Assembly required. No tools needed.
C1253 PND0017740

PMS COLOUR FOR REFERENCE ONLY.
PLEASE REFER TO PANTONE GUIDE BOOK.



PLAYSET ASSEMBLY

01 Rotate sides out.

02 **a** Peel and apply labels as shown. **b** Press latch and pull down.

03 **a** Peel and apply labels as shown. **b** Slide pieces into place.

PLAYSET ASSEMBLY

04 **a** Plug catwalk into outlets shown here. **b** Lay catwalk into place.

05 Insert right floor piece and snap into place.

06 Attach hangar piece.

07 **a** Rotate throne until upright. **b** Extend back piece of throne. **c** Peel and apply labels as shown.

PLAY

CANNON

01 Assemble cannon and attach to playset as shown.

02 Activate lights and sounds by rotating platform 30°.

03 Insert projectile and press button to fire.

PLAY

THRONE AREA

01 BATTLE MODE
Short press and release for blaster burst sound.
Long press for 3 seconds and release for battle sound effects.

02 ALARM MODE
Press to trigger alarm lights and sounds.

MAIN PLAY AREA

01 CATWALK (LEFT BUTTON)
Press button to release catwalk and hear crawling sound effects.

02 TRAPDOOR (MIDDLE BUTTON)
Press button to release trap door and activate sound effects.

03 HANGAR BLAST (RIGHT BUTTON)
Press button to blast off hangar piece and activate lights and blasting sounds.

ATTACH FIGURES TO PEGS AS SHOWN.

ATTACH DETENTION CHAIR TO PEG AS SHOWN.

PLAYSET ACTIVATION

STAR WARS

FORCE LINK

To activate sounds, tap Force Link and wave in areas where indicated. Continue tapping for additional effects.

FIGURE PLAY

01 Tap Force Link wearable technology to turn on.

02 Pick up figure to activate phrases (see hand placement).

03 Move figure forward or side to side to activate additional effects.

04 Continue tapping Force Link for more sounds.