

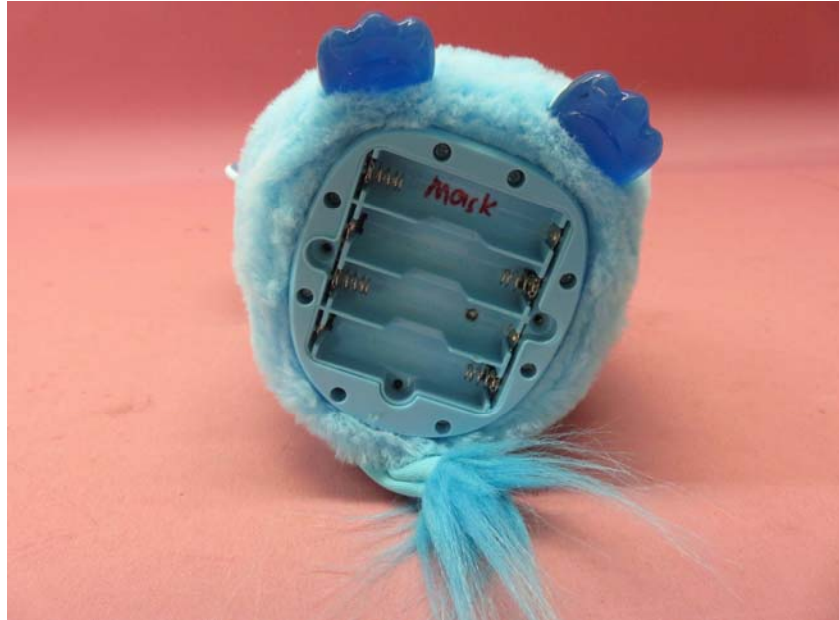
---

**INTERTEK TESTING SERVICE**

Report No.: 16051991HKG-001

**Equipment Photographs**

**(Internal)**



---

FCC ID: RS4-B6083A  
IC: 4502A-CAB6083A

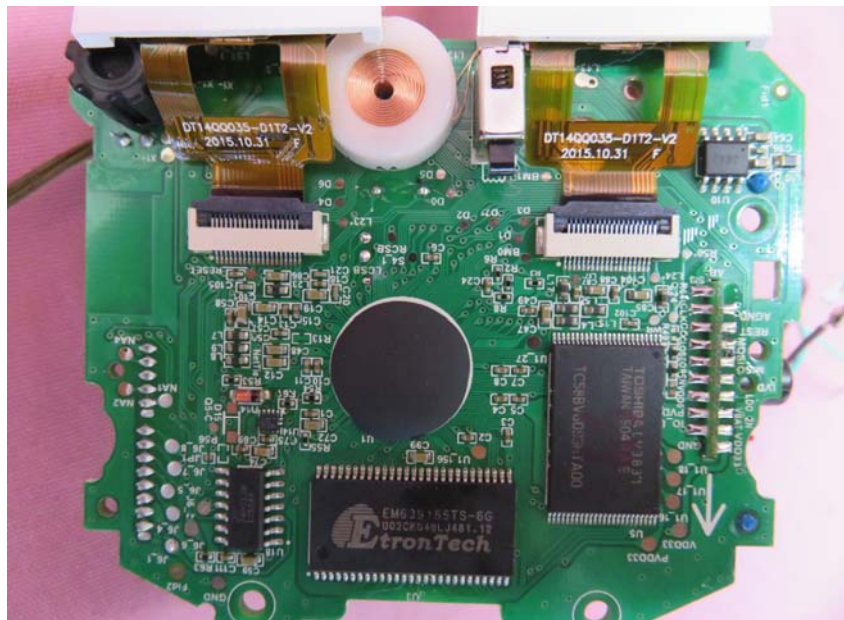
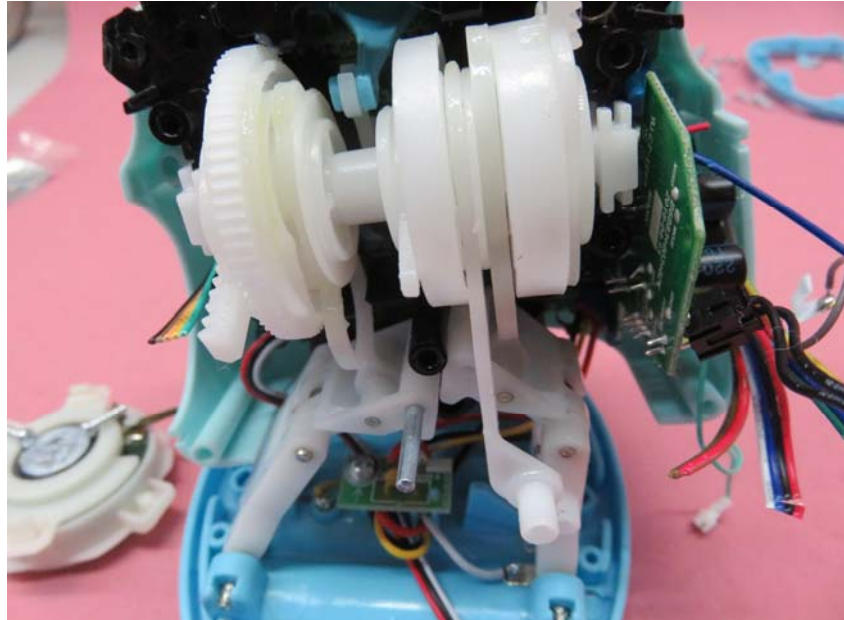
---

# INTERTEK TESTING SERVICE

Report No.: 16051991HKG-001

## Equipment Photographs

(Internal)



---

FCC ID: RS4-B6083A

IC: 4502A-CAB6083A

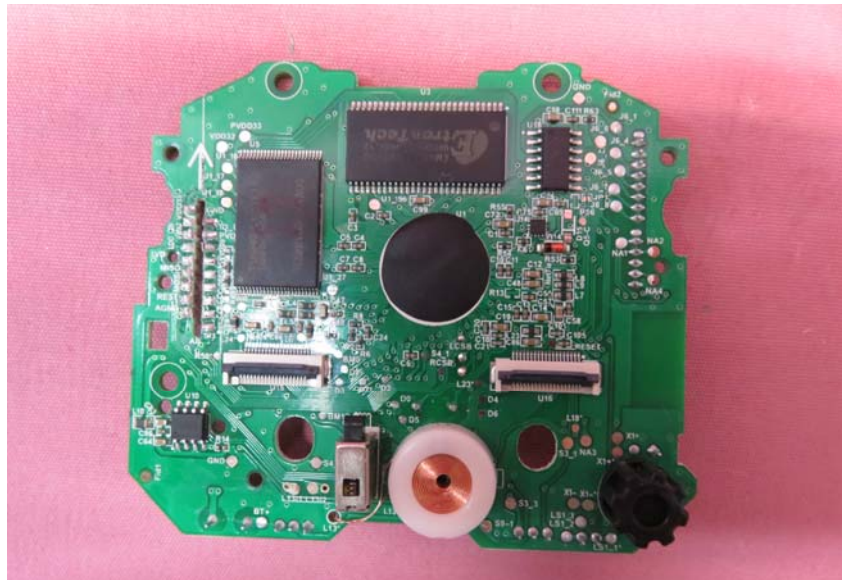
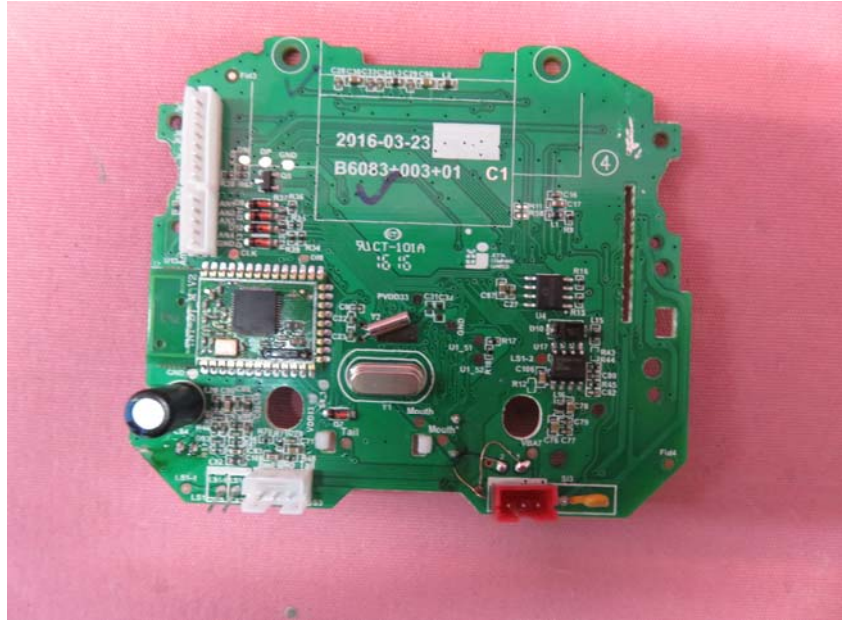
---

# INTERTEK TESTING SERVICE

Report No.: 16051991HKG-001

## Equipment Photographs

(Internal)



---

FCC ID: RS4-B6083A

IC: 4502A-CAB6083A

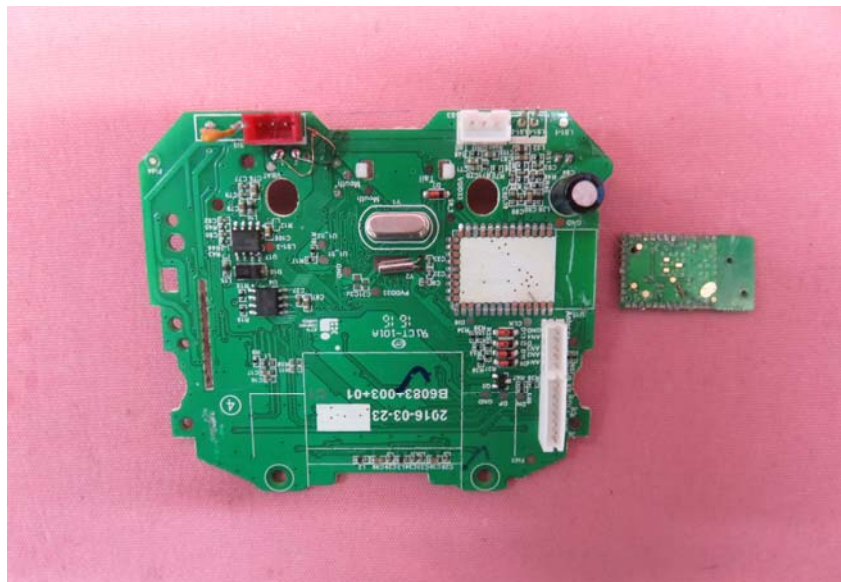
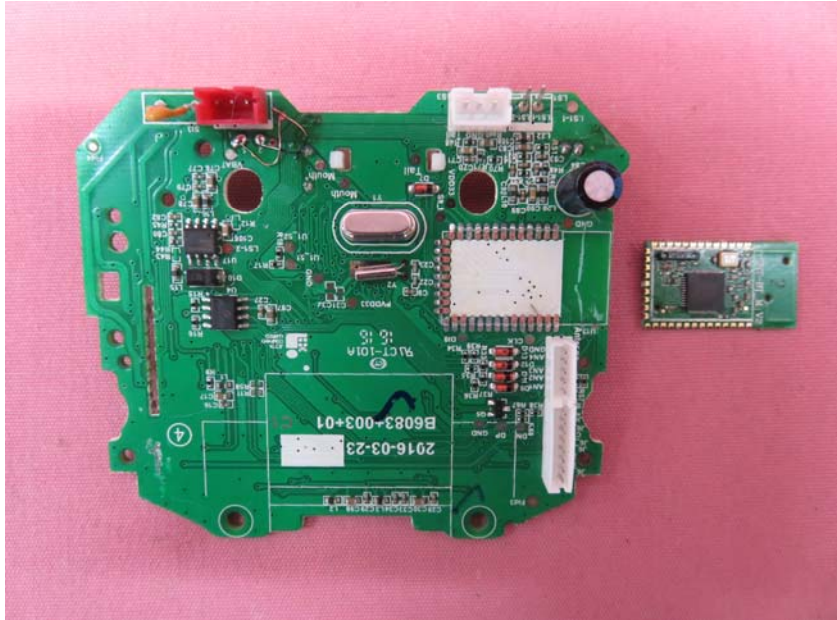
---

# INTERTEK TESTING SERVICE

Report No.: 16051991HKG-001

## Equipment Photographs

(Internal)



---

FCC ID: RS4-B6083A  
IC: 4502A-CAB6083A

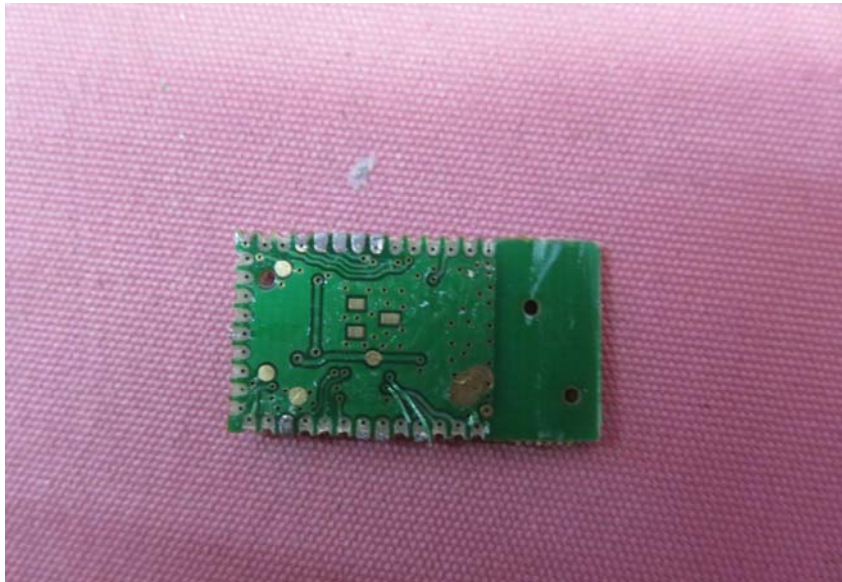
---

# INTERTEK TESTING SERVICE

Report No.: 16051991HKG-001

## Equipment Photographs

(Internal)



---

FCC ID: RS4-B6083A  
IC: 4502A-CAB6083A

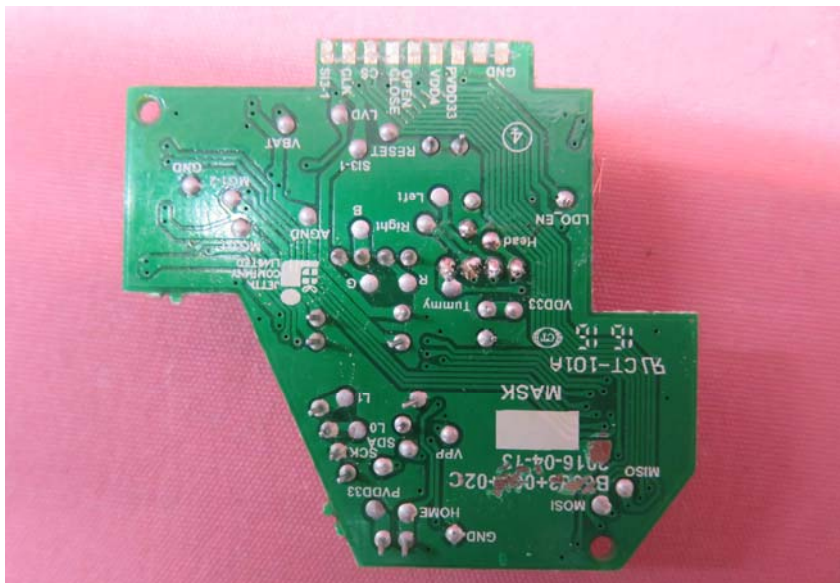
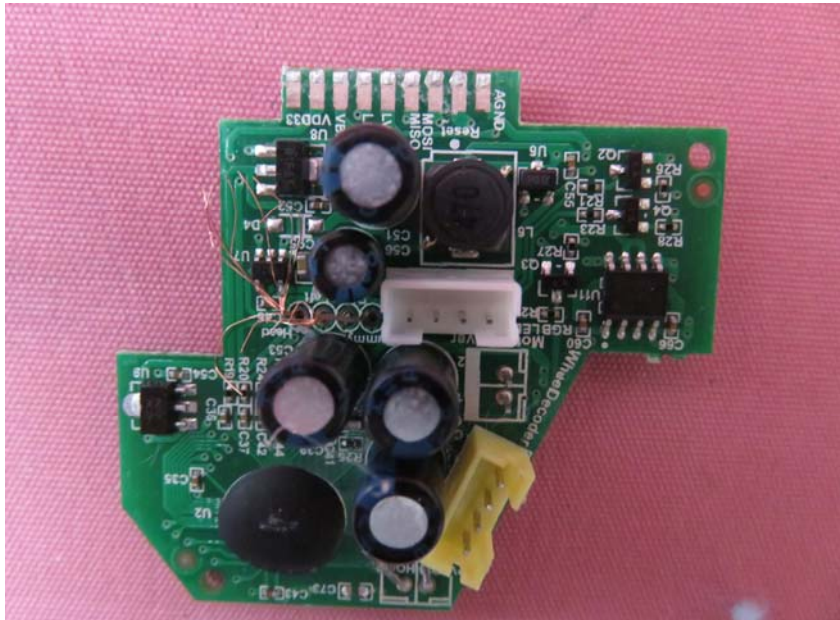
---

# INTERTEK TESTING SERVICE

Report No.: 16051991HKG-001

## Equipment Photographs

(Internal)



---

FCC ID: RS4-B6083A  
IC: 4502A-CAB6083A