

The quick setup wizard of Linking IWI666

Contents

The quick setup wizard of Linking IWI666.....	1
Contents	1
The explanation of terms.....	1
Chapter 1 Hardware Description and Instructions of Basic Operation	2
1.1 Appearance Instructions	2
Chapter 2 User operation guide.....	3
2.1 Hardware operations.....	3
2.1.1 Power switch button.....	3
2.1.2 The Reset button.....	4
2.1.3 Restart operation	4
2.2 Network Configuration.....	4
2.2.1 Ethernet Internet configuration	4
2.2.2 3G/4G Internet configuration &Data flow query	7
2.2.3Wireless parameter settings.....	8
2.3 Battery charging	9
2.4 Wireless Hard Disk	10
2.4.1 Access IWI666 wireless hard disk through device managing page.....	10
2.4.2 Access through cellphone/tablet PC client	11
2.4.3 Access through network neighborhood	12
2.5 IWI666 U disk	13
2.6 Offline Download	13
2.7 System Upgrade	15
2.7.1 Local upgrade Firmware and App Database	15
2.7.2 Remote upgrade Firmware version and Application Database	16
2.8 Notes	19
Chapter 3 Statement	19

The explanation of terms

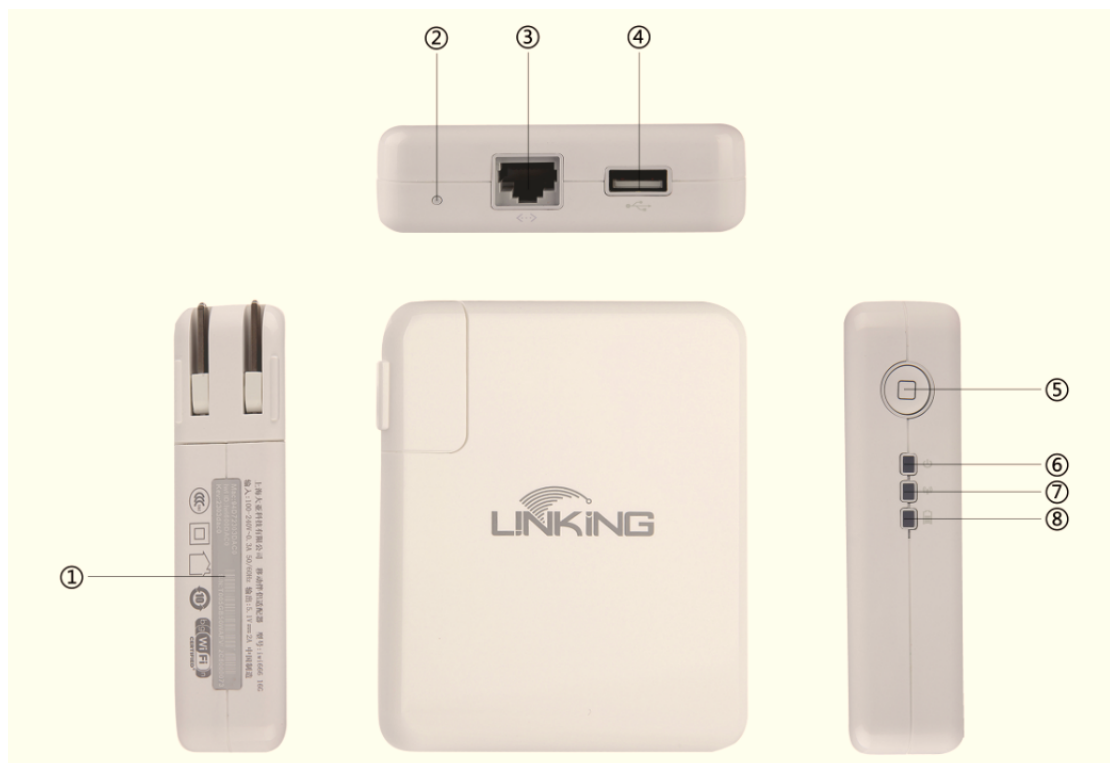
Power Saving mode: IWI666 is under the condition of just using built-in battery, and wireless Internet is turned off, then battery will exclusively charge peripherals;

Fast-Charging mode: IWI666 is under the condition of plugging into power adapter, and wireless Internet is turned off, then it will charge fast the built-in battery, at the same time it can output 5v/2A through USB port (Fast-Charging the tablet PC):

Smart Internet Access: In IWI666, wireless Router mode is defaulted; it will access the upper network environment via wired. It can access the upper network environment with dynamic IP or static IP, and memorizes static IP address intelligently which saves your energy to set again:

Chapter 1 Hardware Description and Instructions of Basic Operation

1.1 Appearance Instructions



- ① Product label, Wireless SSID, Wireless key
- ② Reset button
- ③ WAN Ethernet Port
- ④ USB Port
- ⑤ Power Switch Button
- ⑥ Power LED
- ⑦ Wi-Fi LED
- ⑧ Battery LED

✧ Lights Status Description:

Power LED	Color
Power supply by Plugging into 220V	Green

Power supply by Built-in battery	Red
Wi-Fi LED	Color
Wi-Fi is working and has accessed to Internet	Green
Wi-Fi is working but hasn't accessed to Internet	Orange
Wi-Fi is not working	Red
Battery LED	Color
Battery power over 95%	Flashing Green
Battery power 95%-70%	Green
Battery power 70%-40%	Orange
Battery power 40%-5%	Red
Battery power 5% or less	Flashing Red

Tips:

Under the condition of reset, three lights turn orange.

In the process of upgrading, the Wi-Fi LED flash red and green alternately.

Chapter 2 User operation guide

2.1 Hardware operations

2.1.1 Power switch button

2.1.1.1 Power on:

Mode① While IWI666 is plugged into power adapter, the device starts up automatically;

Mode② Device is supplied by battery, press the switch button 1s before releasing, device performs starting-up operation.;

2.1.1.2 Power off:

Mode① Device is plugged out the power supply, and then the device performs shutdown process.

Mode② The device is working and supplied with battery, press the switch button 1s before releasing, the system performs shutdown process;

Notes: Power Saving Mode: During the shutdown process, if there are USB Ports containing mobile phone or some other recharging devices, devices automatically enter power saving mode (power and Wi-Fi lights turn red). Unplugging the recharging devices such as mobile phone, the system automatically shuts down the machine;

2.1.1.3 Launch Fast-Charging/Power Saving Mode:

The Fast-Charging Mode: The machine plug in the power, and the system powered on, press the switch button 1s before releasing. The system enters the fast charging mode (Wi-Fi LED is red), the battery or the USB charging port charge mobile phones and other devices, the system automatically shuts down the machine when finished the charge.

Power Saving Mode: The device is supplied with battery and is in normal condition, press the switch button 1s before releasing, the device will enter Power Saving Mode (The WI-FI LED is red);

2.1.1.4 Return to normal condition

Under the condition of Fast-Charging Mode/ Power Saving Mode, press switch button 1s again, the device will back to normal working condition, the WI-FI indicator is orange or green.

2.1.2 The Reset button

Under the condition of Fast-Charging Mode/ Power Saving Mode, press switch button 1s again, the device will back to normal working condition, the WI-FI indicator is orange or green.

2.1.3 Restart operation

When the device is malfunction and not working, the Power and Wi-Fi LED is red, use finger to press switch button and at the same time press reset button 1s with sharp object. Then the device performs restart.

2.2 Network Configuration

2.2.1 Ethernet Internet configuration

IWI666 login page address is **iwi.is** and login default password is admin (click “More Config”). File Browser and Network Neighborhood logged-on user name and password is defaulted as admin/admin;

IWI666 support two ways to access Ethernet: Smart Internet access and PPP dial-up. There is only choice at one time; the default way to access is Smart Internet access.

A、Smart Internet access (static/dynamic (DHCP) IP address settings)

LINKING IWI666 defaults for dynamic IP, plug network cable into LAN port, IWI666 can detect the Internet automatically;

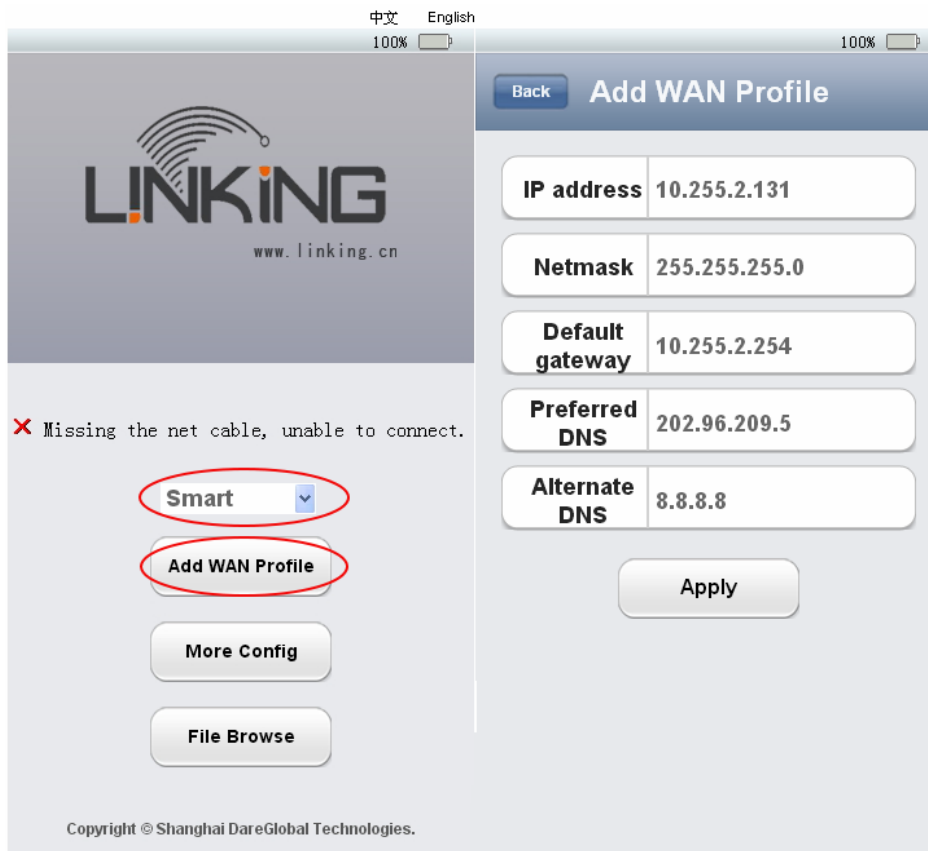
If IWI666 fails to detect Internet, the WI-FI LED is still orange. Then you can add static IP address to access the Internet;

IWI 666 at most supports three static IP addresses at one time. Once set, it can subsequent adapt automatically.

(a) Add new static IP address

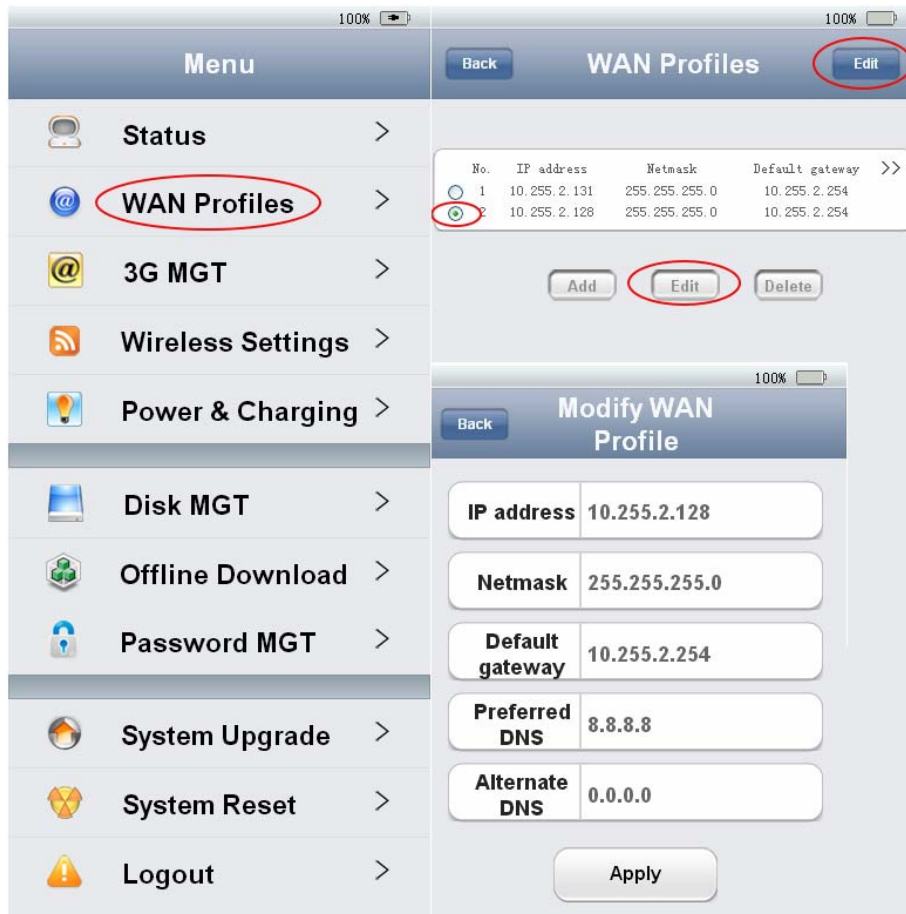
Using a mobile phone or computer via wireless connection to IWI666 (Wireless SSID, Password, See the product label), launch IE browser and enter iwi.is at the

address bar, click enter, select Smart Internet access, click “Add WAN Profile”, input corresponding IP address, click Apply. (Notes: It is needed to make sure that the phone / computer wireless IP address for auto gain.)



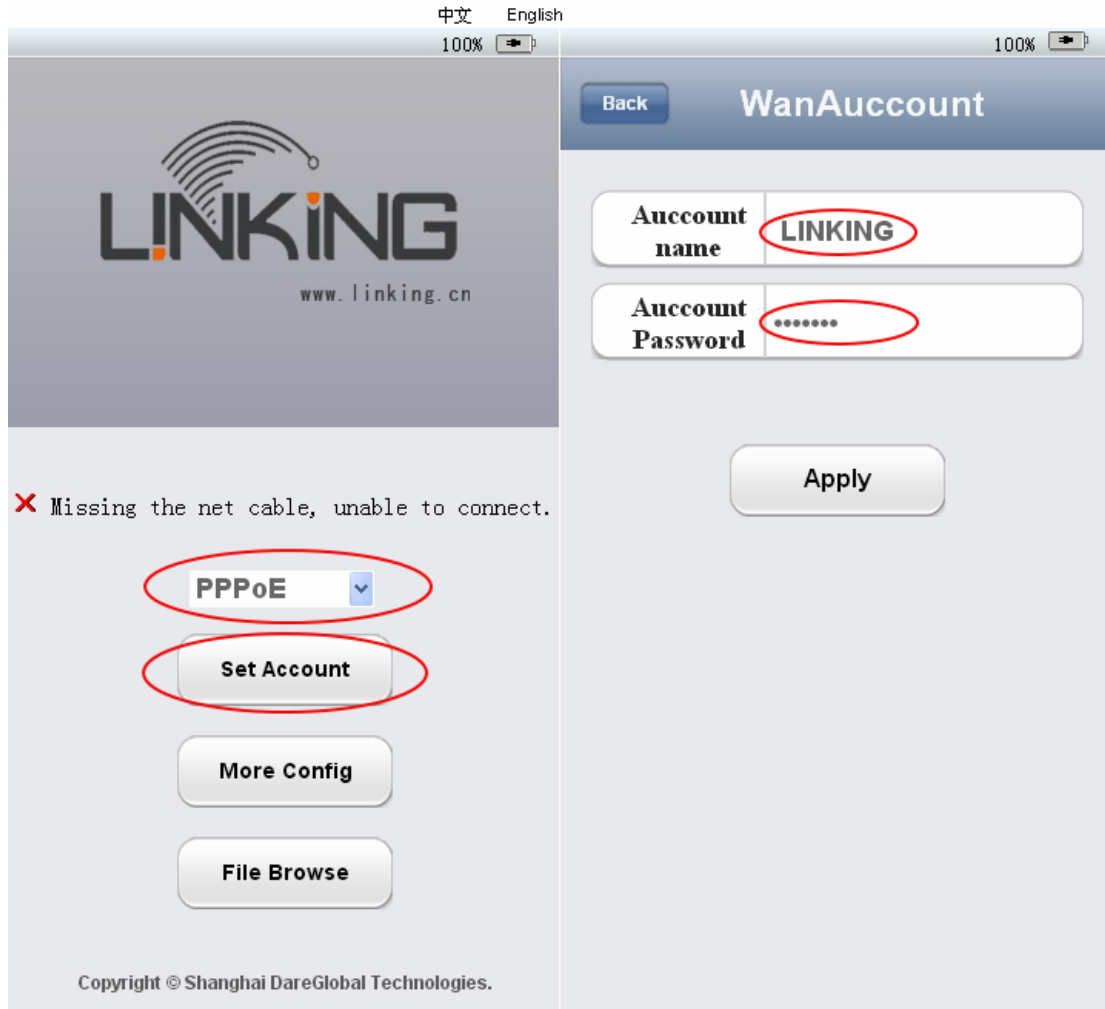
(b) Edit saved IP address

Login the home page of iwi.is, select “More Config”, input password (the initial pass word is **admin**) to login, to select “WAN Profile” management, Press the Edit button at upper right corner to choose one of addresses to edit or delete.



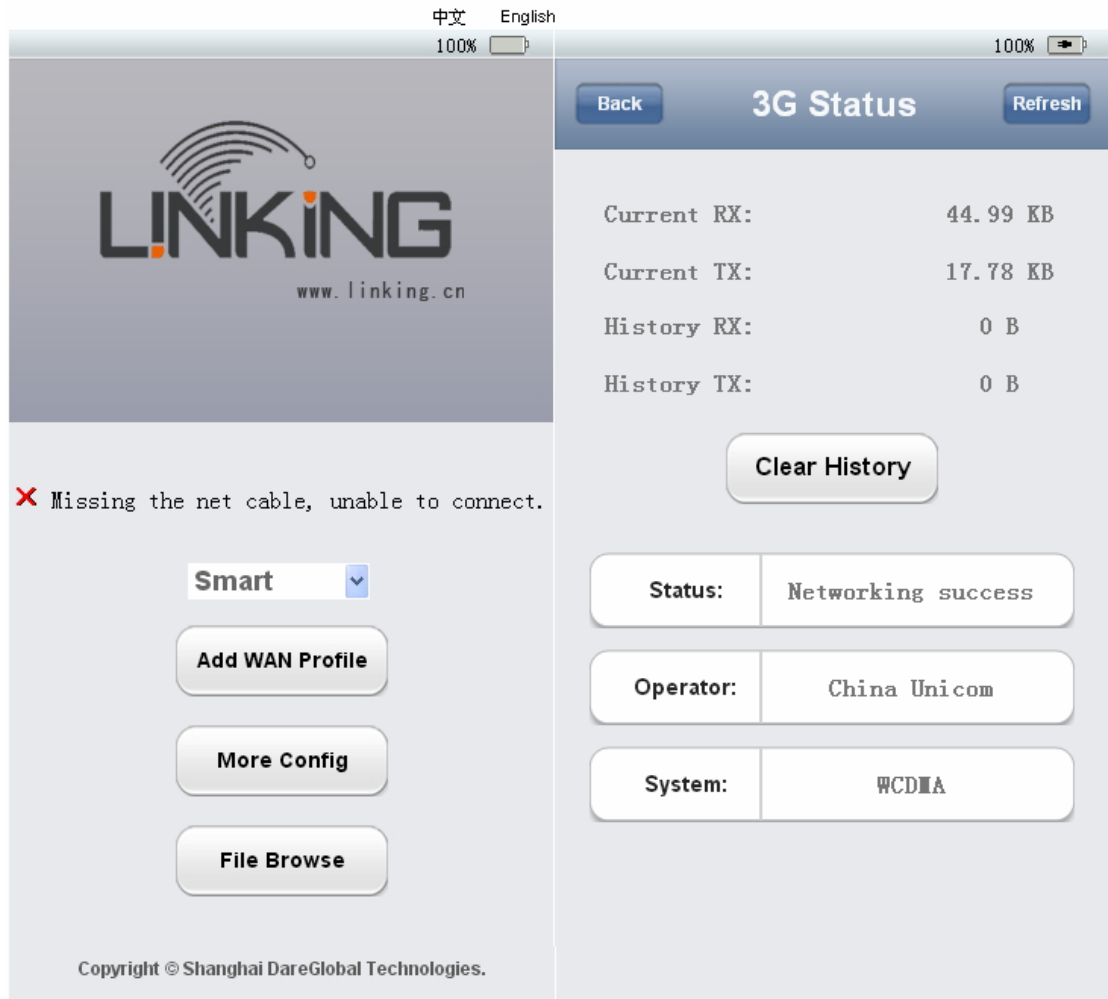
B、 PPP dial-up configurations

If IWI666 access to the upper network and the dialing equipment is from Telecom, so PPP dial-up settings are available; Login the home page of iwi.is, select “PPPoE” as the way to access Internet, click “Set Account”, input account name and password (provided by Telecom operator) then click apply button, in a minute dial will be succeeded and enable to access Internet, WI-FI LED turns green.



2.2.2 3G/4G Internet configuration & Data flow query

The device is working, make sure that IWI666 is in Smart Internet Access Mode, waiting about two minutes after plugged in 3G/4G Dongle. Namely IWI666 can access to 3G network, the WI-FI LED turns green which means Internet is available, it is available to check out the status of 3G and to query network data flow or to modify 3G settings in the page of “Menu”->“3G MGT”.



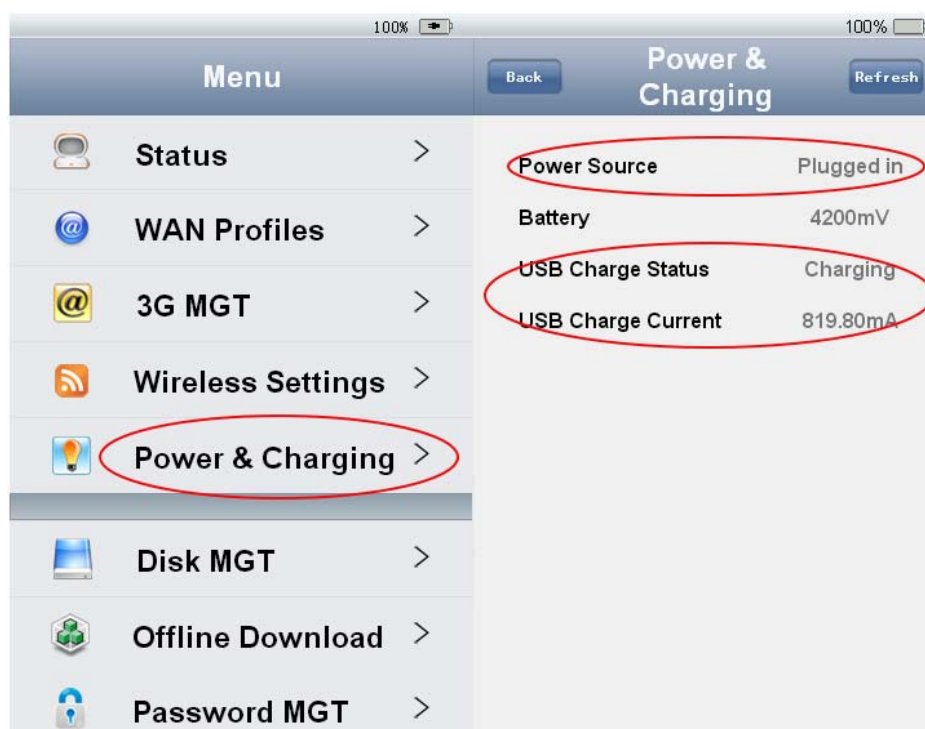
2.2.3 Wireless parameter settings

Login iwi.is “Menu”→”Wireless Settings”, you can modify wireless SSID, password etc.



2.3 Battery charging

IWI666 provide two charging modes to charge Peripherals like cellphone/tablet PC via USB port;
Charging with power adapter----USB port can output at most 5V/2A to charge (normal working 5V/2A, Fast-Charging Mode 5V/2A);
(Manufacturer advice: To charge cellphone/tablet PC with Fast-Charging mode);
Charging with built-in battery ----USB port can output at most 5V/1A to charge (normal working 5V/1A, Fast-Charging Mode 5V/1A);
(Manufacturer advice: To charge cellphone/tablet PC with Power Saving Mode);



2.4 Wireless Hard Disk

There is 16G solid state disk built in IWI666, it support external U disk or mobile hard disk via the USB port. Wireless clients like cellphone/Pad/computer can access built-in solid state disk or external USB storage of IWI666;

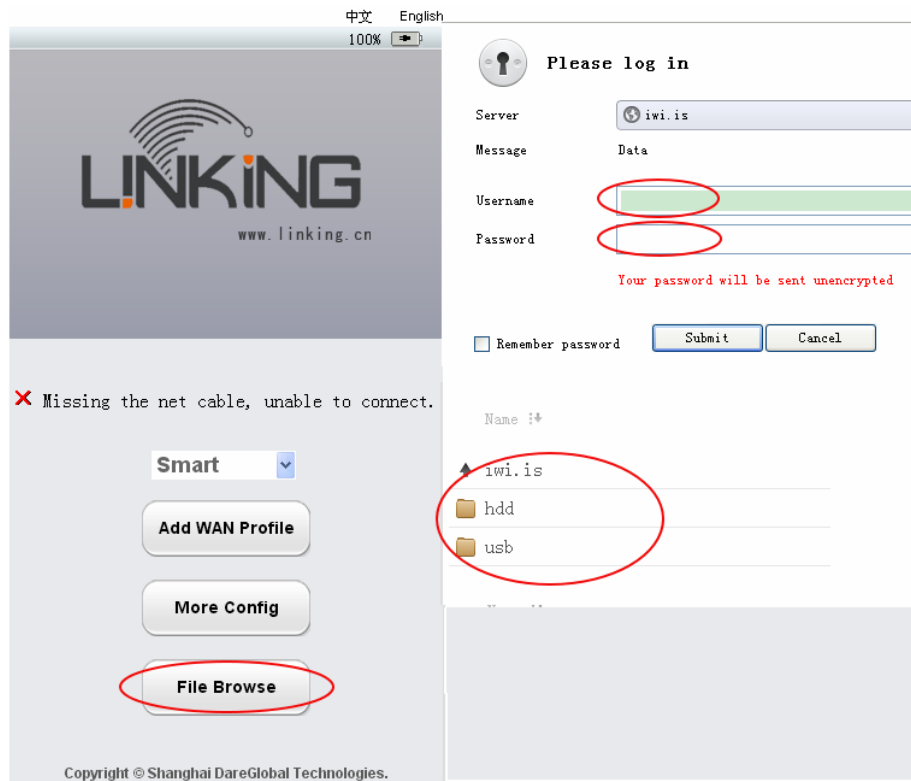
Notes:

Currently, it just supports USB storage with the format of NTFS and FAT32, and only supports first partition of hard disk

2.4.1 Access IWI666 wireless hard disk through device managing page

Login iwi.is the managing page, click “File Browser”, input username and password (both default as **admin**) to enter. **hdd** indicates built-in hard disk, **usb** indicates external storage device.(U disk or mobile hard disk).

Notes: If users have already modified IWI666 login password, input the modified password is the way to login successfully;



2.4.2 Access through cellphone/tablet PC client

Android device

- ✧ Make sure android handheld devices have already successfully accessed to IWI666;
- ✧ Use android handheld devices access to Internet through IWI666, then open www.linking.cn with browser, click “download drivers”, then to find WebDav Client for android, click “download”, install the apk document directly after downloaded;
- ✧ Wait for the installation to complete, then open WebDav Client to have access to the files in IWI666;
- ✧ If configurations need to be modified, click the edit button at the upper left corner on the home page of WebDav, you can edit, delete or save etc.;

Apple devices

- ✧ iOS Apple handheld devices (iPhone/ iPad /iTouch etc.) can use the third-party tools as WebDav Navigator to open files in built-in solid state disk and USB mobile storage of IWI666; The ways to use WebDav Navigator and to launch WebDavNav tools, click “+” on the configuration interface;

Name (user defined): IWI666

Server URL:

Internal solid state disk of IWI666: <http://iwi.is:8080/uploads/hdd>,

External USB storage: <http://iwi.is:8080/uploads/usb>,

Username and password: defaulted as **admin/admin**

Input complete information and click “save” to finish the configuration. So the files in IWI666 can be available;

If configurations need to be modified, click the edit button at the upper left corner on the

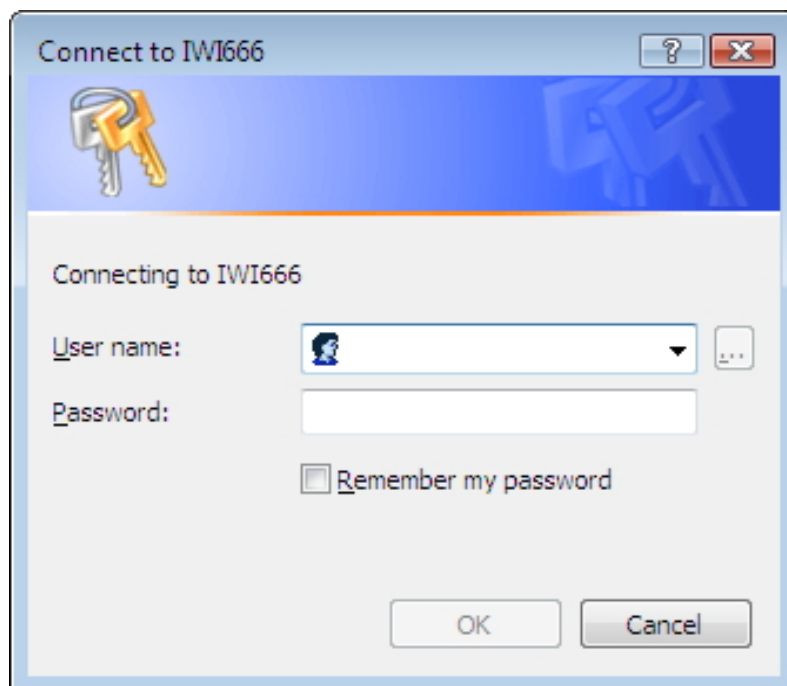
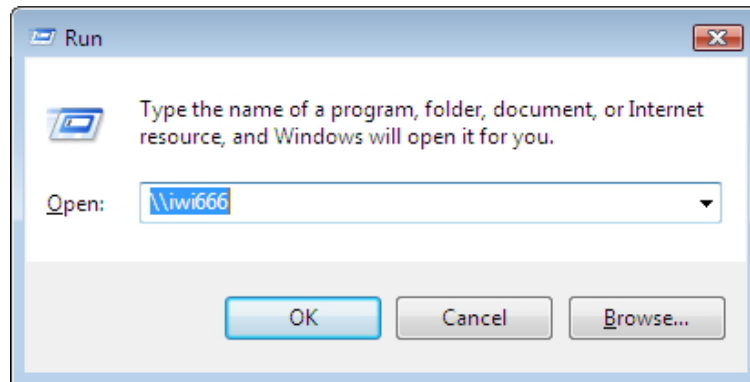
home page of WebDav, you can edit, delete or save etc.;

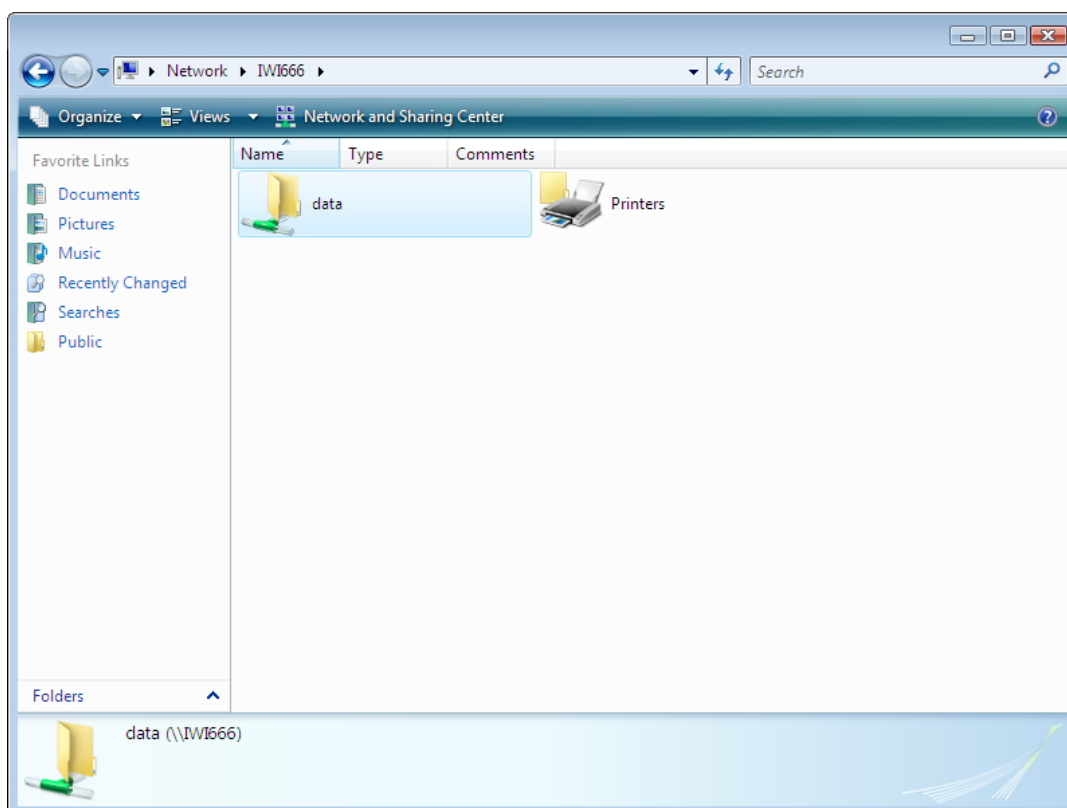
- ✧ Linking official is about to release independent research and development WebDav client tool, please pay close attention to App Store and official website www.linking.cn in a timely manner;

2.4.3 Access through network neighborhood

Make sure your computer has already had access to Linking IWI666. On Windows system, click “start”→”run” or use “Windows button + R” to quickly start run window, input host name in the pop-up window\\iwi666 or \\iwi.is, then click OK, input username and password (default as admin/admin) in the username and password window, then open files in built-in solid state disk and external USB storage of IWI666.

Notes: If user has already modified IWI666 login password, input the modified password is the way to login successfully;





2.5 IWI666 U disk

IWI666 is turned off, using the A-A USB cable of the device accessory to plug in computer in one side, plug in IWI666 another. So the wireless hard disk becomes a virtual U disk.

2.6 Offline Download

You can open the offline download page by Logging in iwi.is to the managing page and then click “Offline Download”

Copying the HTTP download address to download link interface, you can see it is downloading after clicking “Download”

All the files that have been downloaded are saved in file directory `http_download` of the LINKING IWI666 built-in solid state disk.

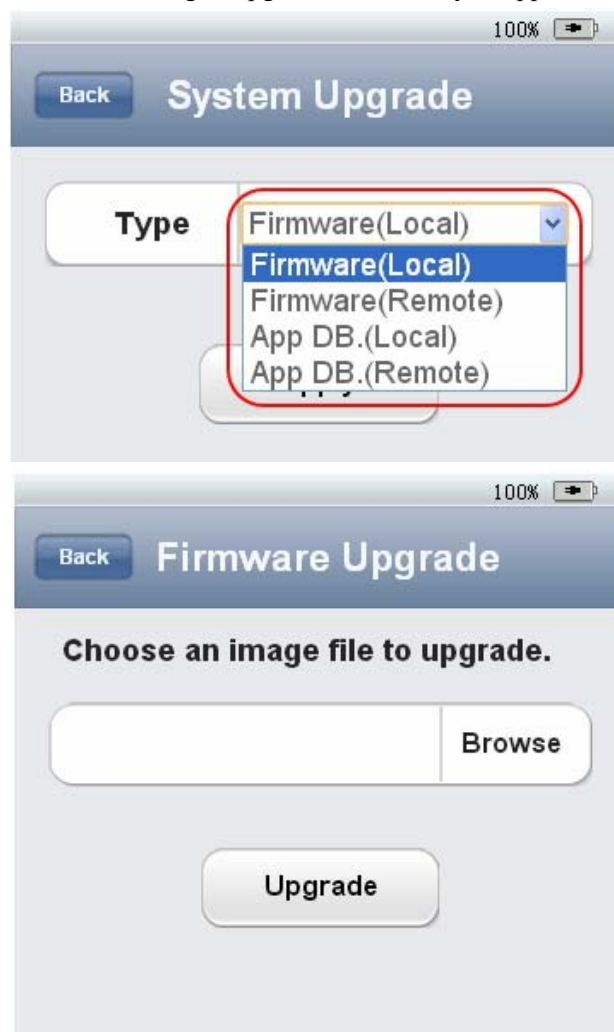


2.7 System Upgrade

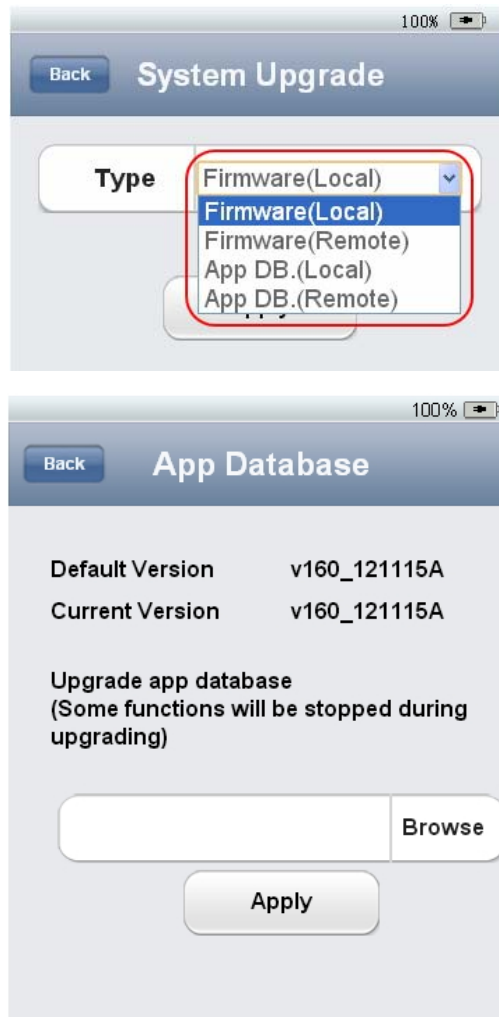
Login the managing page of iwi.is and click “System Upgrade” to choose local or remote new application version, local or remote new application database;

2.7.1 Local upgrade Firmware and App Database

A、Click “System Upgrade” then select “Firmware(Local)” at the drop-down menu of upgrade type , at the same time, there will pop-up the following window after selecting “Apply” . The Firmware version needed to be upgraded can be chosen by clicking”Browse”. After clicking “Upgrade” there are 3 minutes waiting to upgrade successfully to appointed version;

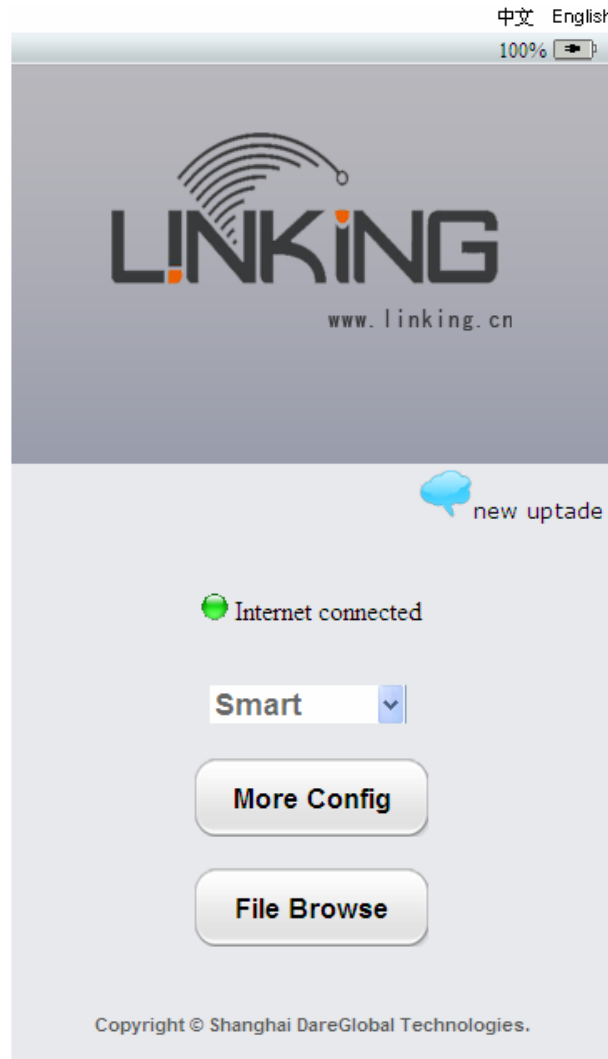


B、Click “System Upgrade” then select “App DB.(Local)” at the drop-down menu of upgrade type , at the same time, there will pop up the following window after selecting “Apply” . The application database needed to be upgraded can be chosen by clicking “Browse”. After clicking “Upgrade” there are 3 minutes waiting to upgrade successfully to appointed Application Database;



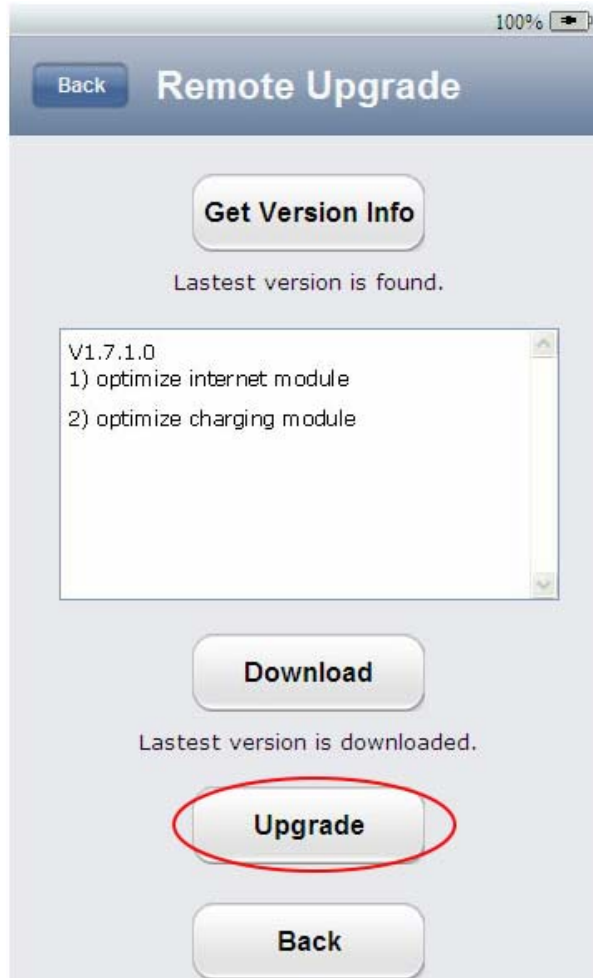
2.7.2 Remote upgrade Firmware version and Application Database

Firstly, it is sure that IWI666 has connected to Internet. IWI66 will automatically detect from the remote server if there are new Firmware version and Application Database. If there is new version, it will pop up message at the configuration interface: Now there is new update, users just need to click this tag and input password to enter the page of Firmware remote upgrade or Application Database remote upgrade;



A、 Click “System Upgrade” then select “Firmware(Remote)” at the drop-down menu of upgrade type , at the same time, there will pop up the following window after selecting “Apply” . The Firmware database needed to be upgraded can be chosen by clicking “Get version info” . If there is new update, please click “Download” . Then “Update” will be seen. After clicking “Upgrade” there are 3 minutes waiting to upgrade successfully to latest Firmware;





B、 Click “System Upgrade” then select “APP DB.(Remote)” at the drop-down menu of upgrade type , at the same time, there will pop up the following window after selecting “Apply” . The Application Database needed to be upgraded can be chosen by clicking “Get version info”. If there is new update, please click “Download”. Then “Update” will be seen. After clicking “Upgrade” there are 3 minutes waiting to upgrade successfully to latest application Database;;





2.8 Notes

Remark 1: The more detailed IWI666 product instructions is available to download on the official website of LINKING : opening www.linking.cn with IE browser and clicking “instructions” to find “IWI666 product instructions.pdf” and “download”. The instructions can be opened with pdf reader.

Chapter 3 Statement

Federal Communication Commission Interference Statement

This equipment has been tested and found to comply with the limits for a Class B digital device, pursuant to Part 15 of the FCC Rules. These limits are designed to provide reasonable protection against harmful interference in a residential installation. This equipment generates uses and can radiate radio frequency

energy and, if not installed and used in accordance with the instructions, may cause harmful interference to radio communications. However, there is no guarantee that interference will not occur in a particular installation. If this equipment does cause harmful interference to radio or television reception, which can be determined by turning the equipment off and on, the user is encouraged to try to correct the interference by one of the following measures:

- Reorient or relocate the receiving antenna.
- Increase the separation between the equipment and receiver.
- Connect the equipment into an outlet on a circuit different from that to which the receiver is connected.
- Consult the dealer or an experienced radio/TV technician for help.

This device complies with Part 15 of the FCC Rules. Operation is subject to the following two conditions: (1) This device may not cause harmful interference, and (2) this device must accept any interference received, including interference that may cause undesired operation.

FCC Caution: Any changes or modifications not expressly approved by the party responsible for compliance could void the user's authority to operate this equipment.

This device complies with FCC's RF radiation exposure limits set forth for general population/uncontrolled exposure. In order to maintain compliance it must be installed and operated such that a minimum separation distance of 20cm is maintained from all persons at all times. In addition this device must not be collocated with any other antenna or transmitter.