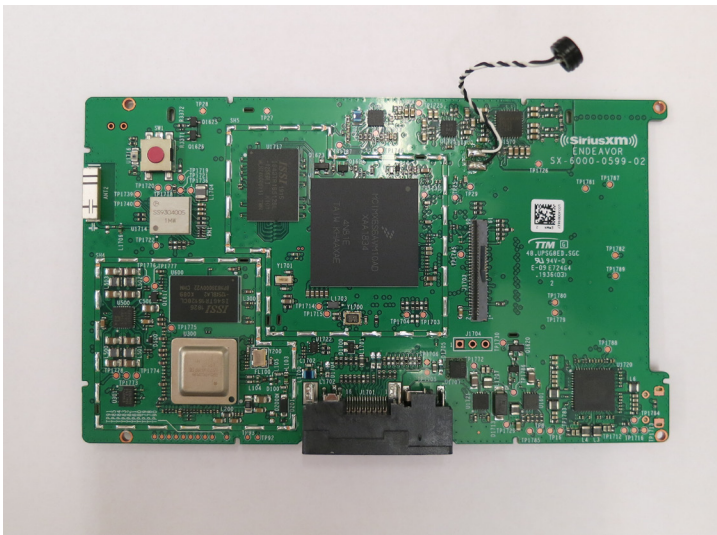
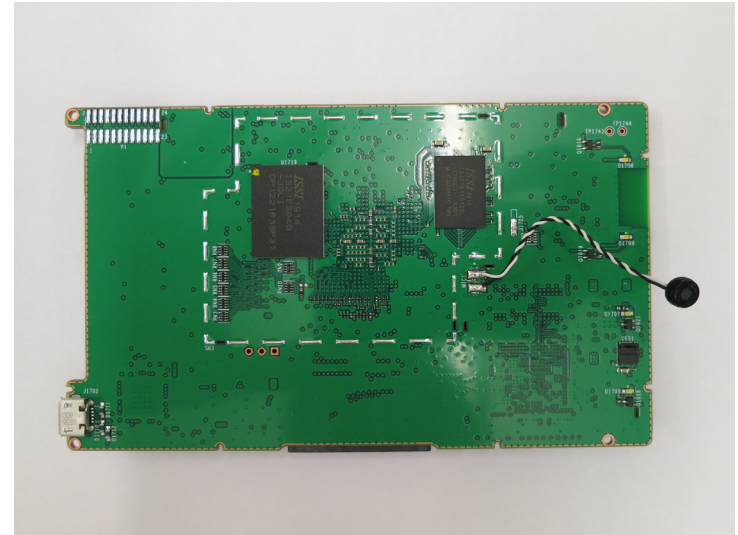




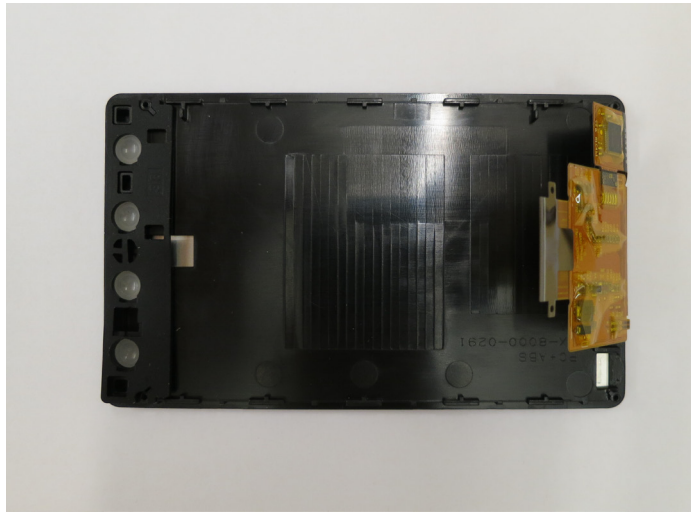
PCBA Rear View (w/back housing removed) PCBA Rear View (w/front housing & screws)



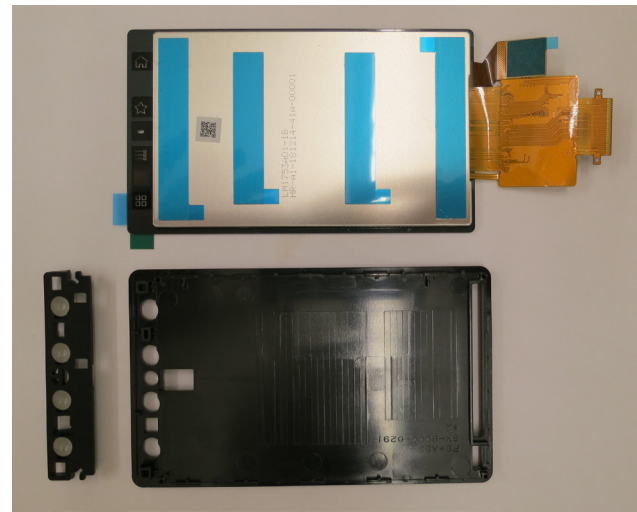
PCBA Only Rear View



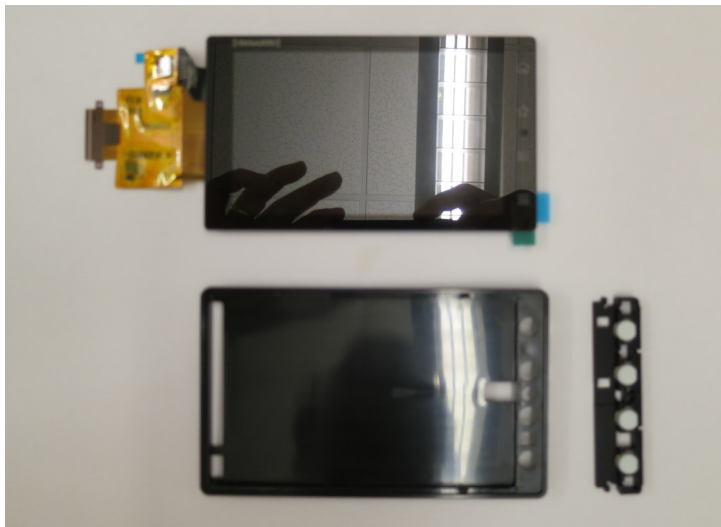
PCBA Only Front View



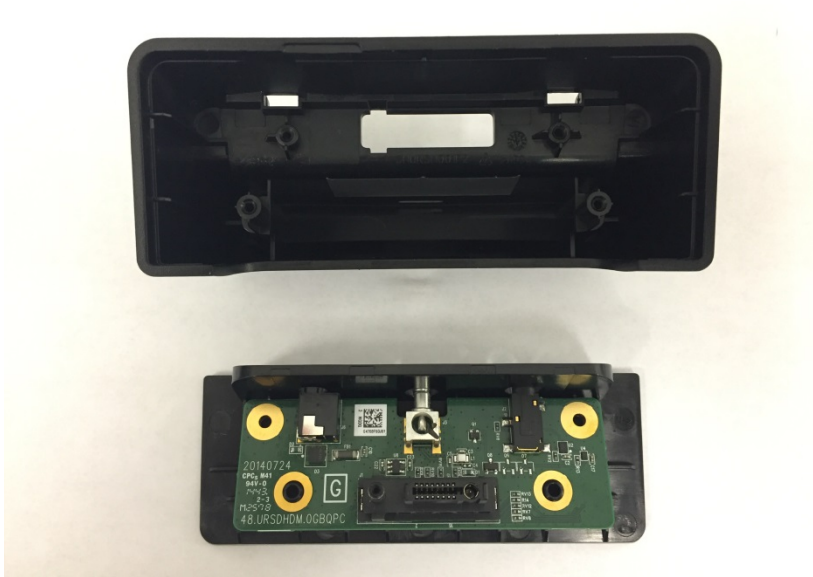
Rear View of Front Housing,
Display and Snubber



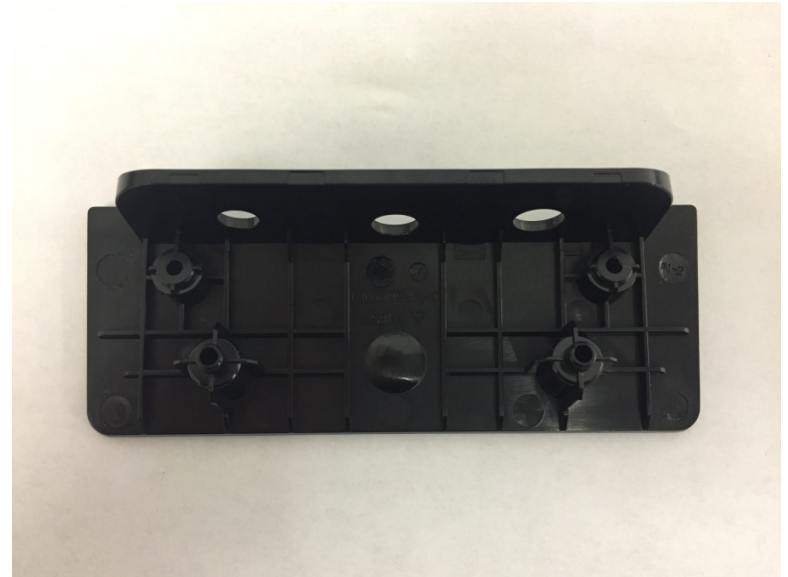
Rear View of Front Housing,
Display and Snubber (Display
and Snubber Removed)



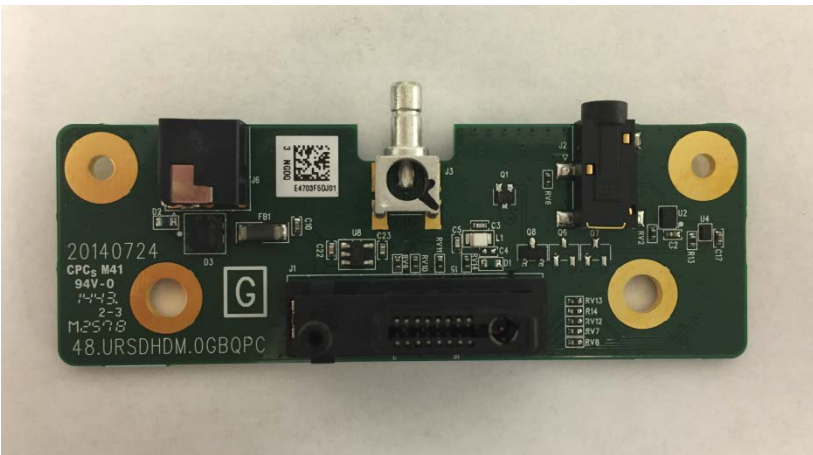
Front View of Front Housing,
Display and Snubber (Display
and Snubber Removed)



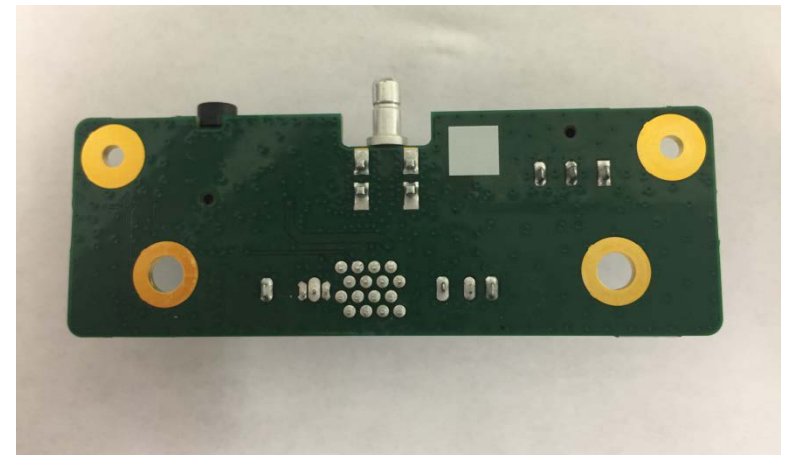
Top and Bottom Housing with PCBA



Bottom Housing without PCBA



PCBA Top



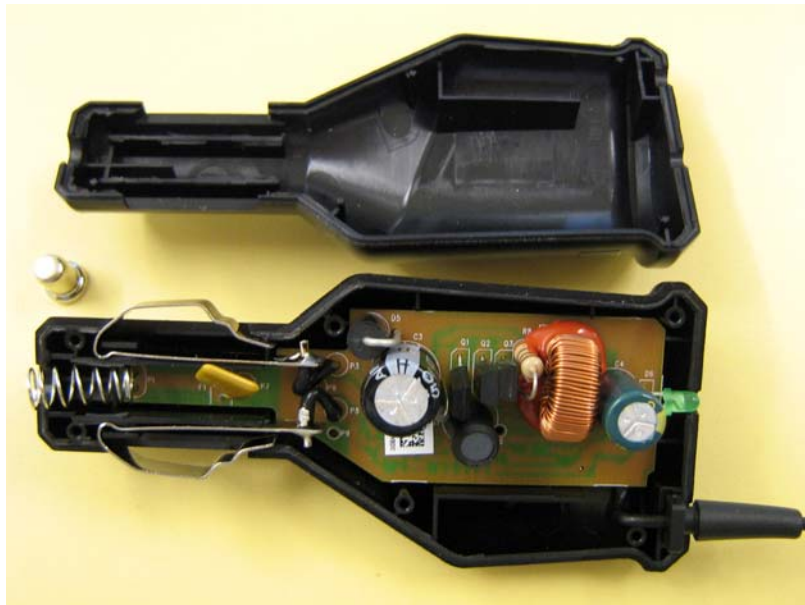
PCBA Bottom



Housings with PCBA and Cable Assembly



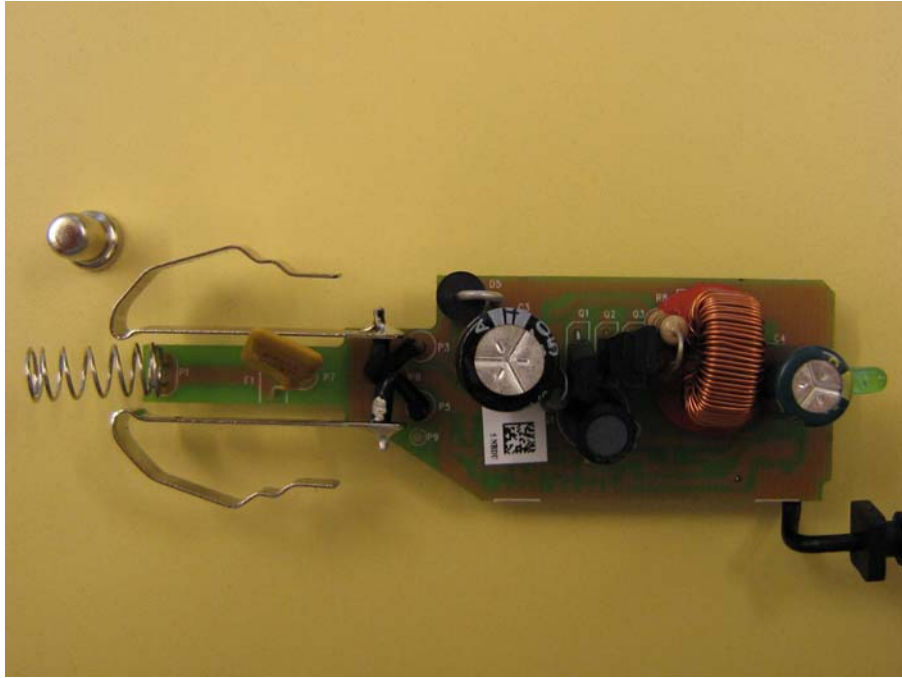
Housings Only



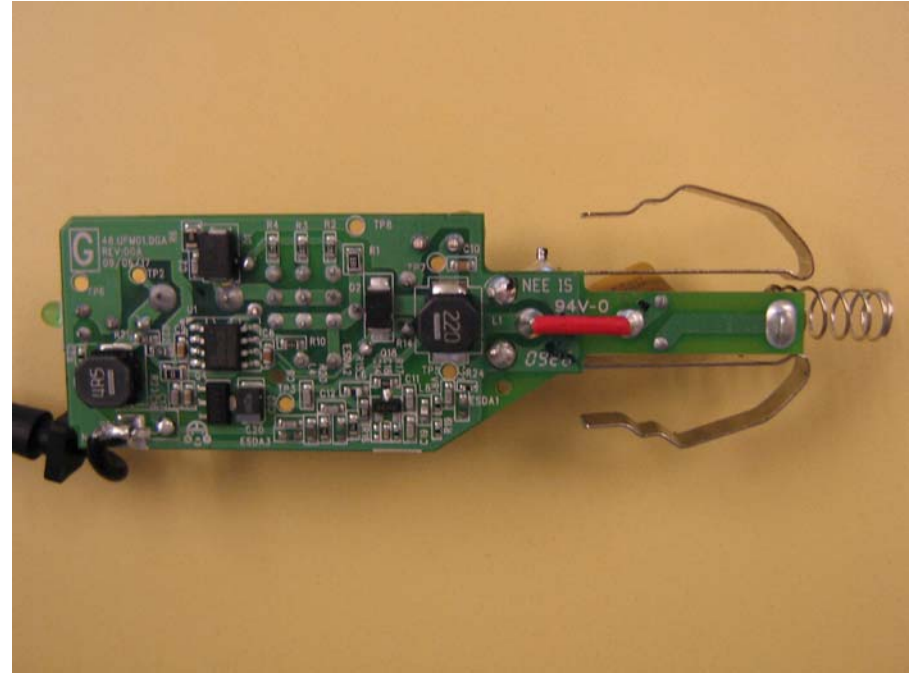
Housings with PCBA



Cable Assembly



PCBA Top



PCBA Bottom



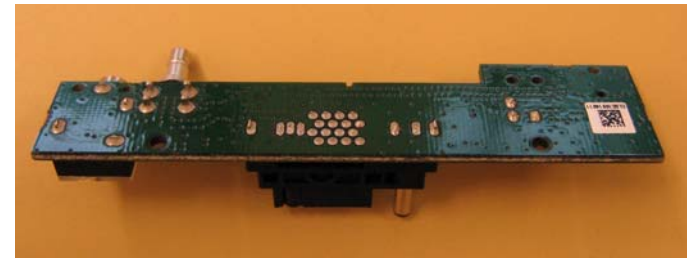
Front and Rear Housing with PCBA



Front Housing without PCBA



PCBA Top



PCBA Bottom