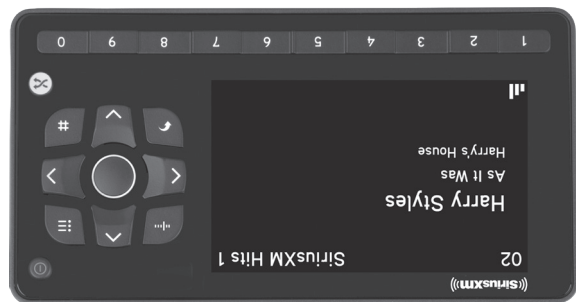


QUICK START GUIDE

SATELLITE RADIO WITH VEHICLE KIT

ONYX EZR



SiriusXM

Self installation instructions and tips are provided for your convenience. It is your responsibility to determine if you have the knowledge, skills and physical ability required to properly perform an installation. SiriusXM shall have no liability for damage or injury resulting from the installation or use of any SiriusXM or third party products. It is your responsibility to ensure that all products are installed in adherence with local laws and regulations and in such a manner as to allow a vehicle to be operated safely and without distraction. SiriusXM product warranties do not cover the installation, removal or reinstallation of any product.

Sirius XM Radio Inc.
1221 Avenue of the Americas, 36th Floor
New York, NY 10020

siriusxm.com

1.866.635.2349

© 2023 Sirius XM Radio Inc.

SXEZR1V1QSG 230911a

6 Connect the Audio (cont.)

Option 2: Good: Use the **PowerConnect** feature of Onyx EZR. PowerConnect plays the XM audio through your vehicle's FM radio.

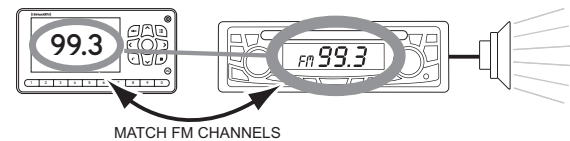
A. Use the SiriusXM FM Channel Finder at www.siriusxm.com/fmchannel. Go to the website and enter your zip code. The Channel Finder will suggest a list of available FM channels in your area. For convenience, write down or print out the list.

B. Pick the first FM channel on your list. Tune your vehicle's FM radio to this FM channel.

C. Set your Onyx EZR to transmit on the same FM channel that you have selected on your vehicle's FM radio:

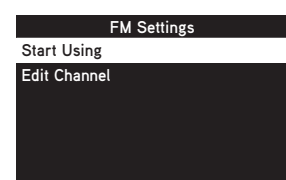
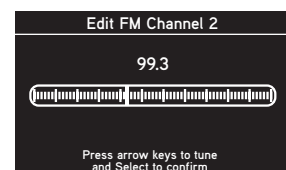
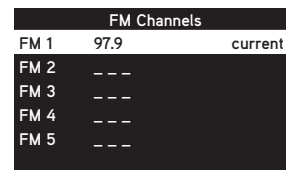
- Press **menu** and then press **▼** to scroll to and highlight **FM Settings**. Press the **Select** button.
- FM Channels** will be highlighted. If it is not highlighted, press **▼** to scroll to and highlight **FM Channels**. Press the **Select** button.
- Press **▼** to scroll to and highlight **FM2**. Press the **Select** button.
- Press **◀** and **▶** to tune in steps of .2, or press **▼** and **▲** to tune in steps of 1 to select the available FM channel you have chosen. Press the **Select** button to select the FM channel.
- Start Using** will be highlighted. Press the **Select** button.
- The selected FM channel will be confirmed on the display screen. Press and hold **menu** to return to the main display screen.

D. You should now hear XM Preview channel 1 through your vehicle's FM radio. If you are not satisfied with the audio quality, move to the next FM channel on your list and repeat the process. Continue until you have found an FM channel with which you are satisfied.



E. If you are satisfied with the audio quality, go back to Step 1 "Find a Location for Onyx EZR and Mount It" on the opposite side and finish installing the Dash or Vent Mount. Then the installation is complete.

TIP! You may find an FM channel with static or silence on your vehicle's FM radio that does not work with your Onyx EZR. It is possible that some type of inaudible interference is present that prevents reception of the SiriusXM broadcast. Your only options are to use another FM channel or a different audio connection method.



7 Subscribe

You can follow either the general activation and subscription process or use the on-board activation guide to activate your Onyx EZR and subscribe to the SiriusXM service.

General activation and subscription process:

A. Make sure your Onyx EZR is turned on, receiving the XM signal, and tuned to XM Preview channel 1 so that you can hear SiriusXM audio.

B. Make a note of your SiriusXM Radio ID. You can find it by selecting **Radio ID** in menu items, by tuning to channel 0, on a label on the bottom of the gift box, and on the label on the back of your Onyx EZR.

NOTE! The SiriusXM Radio ID does not use the letters I, O, S, or F.

C. To subscribe:
• Online: Go to www.siriusxm.com/activatenow to access or set up an online account, subscribe to the service, and activate your Radio.
OR
• By phone: Call **1-866-587-4225**.

Activation usually takes 10 to 15 minutes after you have completed the subscription process, but may take up to an hour. We recommend that your Radio remain on until subscribed. Once subscribed, the Radio will receive and you can tune to the channels in your subscription plan.

Press **▲** or **▼** to tune to other channels, and **◀** or **▶** to browse the different categories of channels. Learn what all the buttons do in the panel below.

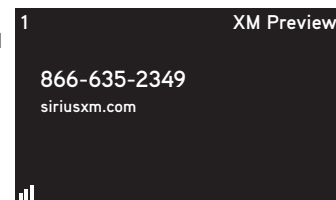
Activation guide:

For your convenience, Onyx EZR has an on-board activation guide. You can activate your radio and subscribe to the XM service by using this guide, where you will be guided step-by-step through the subscription process. To access and use the guide, simply follow these steps:

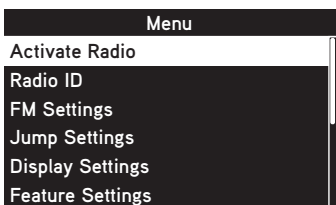
A. Turn Onyx EZR on and press the **menu** button.

B. Activate Radio will be highlighted. Press the **Select** button.

C. Follow the directions on each successive screen until you complete the subscription process.



*The phone number shown above may differ from the one shown on your Onyx EZR. All numbers are valid.



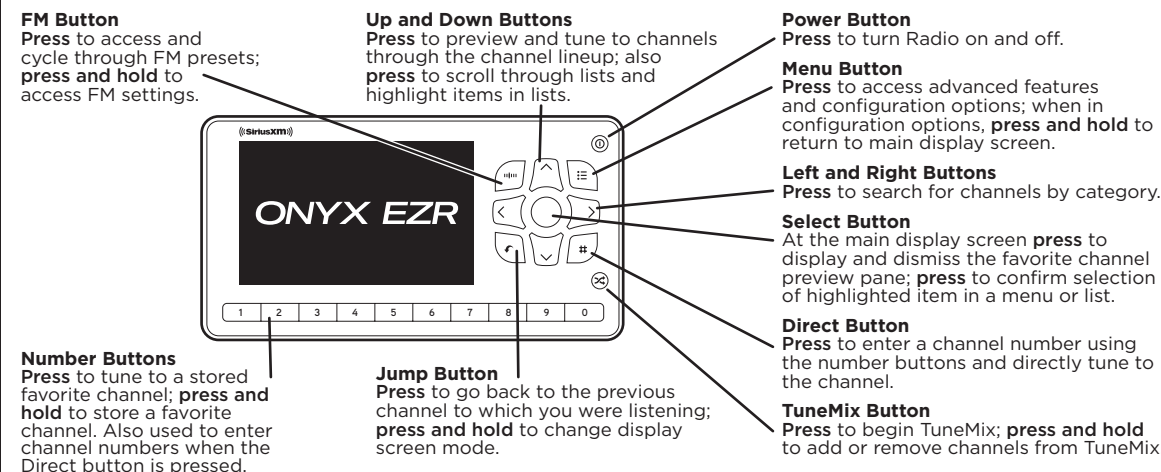
Onyx EZR Main Display

When listening to a channel, information about the channel and what is currently playing is displayed.

The Onyx EZR User Guide is available at: www.siriusxm.com/guides.



Onyx EZR Button Functions



SiriusXM 90-Day Limited Warranty

What This Warranty Covers

This warranty covers defects in material and workmanship for 90 days from the date of purchase by the original retail purchaser only. Sirius XM Radio Inc., at its sole discretion, will repair or replace the product without charge for parts and labor. Products replaced under this warranty become the property of SiriusXM. Replacement products are warranted to be free from defects for 30 days or the remainder of the original warranty, whichever is longer.

What This Warranty Does Not Cover

This warranty does not cover: products sold as used, as is, reconditioned or refurbished; software stored on internal or removable memory; non-rechargeable batteries, surface preparation cleaners, adhesive pads, fasteners, and ear-buds; costs incurred for installation, removal or reinstallation of the product; correction of installation problems, such as elimination of externally generated static or noise and antenna placement and aiming; defects or damage caused by alteration, improper installation or removal, use of third party accessories, mishandling, misuse, neglect, accident, power surges or acts of nature.

How to Obtain Warranty Service

To obtain warranty service, please call SiriusXM Listener Care at 1-866-635-7191. You will be required to provide proof of purchase and a description of the defect. You must prepay the cost of shipping the product to an approved service center.

LIMITATIONS OF LIABILITY

THE LIABILITY OF SIRIUSXM UNDER THIS WARRANTY IS LIMITED TO REPAIR OR REPLACEMENT AS PROVIDED ABOVE AND IN NO EVENT SHALL THE LIABILITY EXCEED THE PURCHASE PRICE PAID FOR THE PRODUCT. ANY IMPLIED WARRANTIES, INCLUDING ANY IMPLIED WARRANTY OF MERCHANTABILITY OR FITNESS FOR A PARTICULAR PURPOSE, SHALL BE LIMITED TO THE DURATION OF THIS WRITTEN WARRANTY. ANY ACTION FOR BREACH OF WARRANTY, INCLUDING BREACH OF ANY IMPLIED WARRANTY OF MERCHANTABILITY, MUST BE BROUGHT WITHIN 48 MONTHS FROM THE DATE OF ORIGINAL PURCHASE. IN NO CASE SHALL SIRIUSXM BE LIABLE FOR ANY CONSEQUENTIAL OR INCIDENTAL DAMAGES FOR BREACH OF THIS OR ANY OTHER WARRANTY, EXPRESS OR IMPLIED. SOME STATES DO NOT ALLOW LIMITATIONS ON HOW LONG AN IMPLIED WARRANTY LASTS OR THE EXCLUSION OR LIMITATION OF INCIDENTAL OR CONSEQUENTIAL DAMAGES, SO THE ABOVE LIMITATIONS OR EXCLUSIONS MAY NOT APPLY TO YOU. This warranty gives you specific legal rights and you may also have other rights, which vary from state to state.

Important Legal Information

Copyrights and Trademarks

© 2023 Sirius XM Radio Inc. Sirius, XM and all related marks and logos are trademarks of Sirius XM Radio Inc. Other marks, channel names and logos are the property of their respective owners. All rights reserved.

Important Legal Notice About Your Subscription

Hardware and subscription sold separately. **Service will automatically renew into the subscription Package you choose (which may differ from the Package which arrived with the Radio), and will automatically bill at then current rates, after any complimentary trial or promotional period ends, until you call us at 1-866-635-2349 to cancel.** See our Customer Agreement for complete terms at www.siriusxm.com. Fees and taxes apply. All fees and programming subject to change. Our satellite service is available only to those at least 18 and older in the 48 contiguous USA and DC. Our Sirius satellite service is also available in PR (with coverage limitations) but this radio is not operational in PR. Our streaming service is available throughout our satellite service area and in AK and HI.

FCC Statement

The user is cautioned that changes or modifications not expressly approved by Sirius XM Radio Inc. can void the user's authority to operate this device. This device complies with Part 15 of the FCC Rules. Operation is subject to the following two conditions: 1. This device may not cause harmful interference. 2. This device must accept any interference received, including interference that may cause undesired operation. This equipment has been tested and found to comply with the limits for a Class B digital device, pursuant to Part 15 of the FCC Rules. These limits are designed to provide reasonable protection against harmful interference in a residential installation. This equipment generates, uses, and can radiate radio frequency energy and, if not installed and used in accordance with the installation instructions, may cause harmful interference to radio communications. However, there is no guarantee that interference will not occur in a particular installation. If this equipment does cause harmful interference to radio or television reception, which can be determined by turning the equipment off and on, the user is encouraged to try to correct the interference by one or more of the following measures: Reorient or relocate the receiving antenna of the affected receiver. Increase the separation between the SiriusXM equipment and the affected receiver. Connect the SiriusXM equipment into an outlet on a circuit different from that to which the affected receiver is connected. Consult the dealer or an experienced radio/TV technician for help. **WARNING!** The FCC and FAA have not certified this Satellite Radio Receiver for use in any aircraft (neither portable nor permanent installation). Therefore, Sirius XM Radio Inc. cannot support this type of application or installation.

FCC RF Exposure Statement

The Onyx EZR complies with FCC RF exposure limits set forth for an uncontrolled environment. The Onyx EZR should be installed and operated with a minimum distance of 20 cm (8 in) from your body.

Safety and Care Information

IMPORTANT! Self installation instructions and tips are provided for your convenience. It is your responsibility to determine if you have the knowledge, skills, and physical ability required to properly perform an installation. SiriusXM shall have no liability for damage or injury resulting from the installation or use of any SiriusXM or third party products. It is your responsibility to ensure that all products are installed in adherence with local laws and regulations and in such a manner as to allow a vehicle to be operated safely and without distraction. SiriusXM product warranties do not cover the installation, removal or reinstallation of any product.

- Do not expose to extreme temperatures (above 140°F or below -4°F, or above 60°C or below -20°C).
- Do not expose to moisture. Do not use device near or in water. Do not touch the device with wet hands.
- Do not let any foreign matter spill into device.
- Do not store in dusty areas.
- Do not expose to chemicals such as benzene and thinners. Do not use liquid or aerosol cleaners. Clean with a soft damp cloth only.
- Do not expose to direct sunlight for a prolonged period of time, and do not expose to fire, flame, or other heat sources.
- Do not try to disassemble and/or repair device yourself.
- Do not drop your device or subject it to severe impact.
- Do not place heavy objects on device.
- Do not subject device to excessive pressure.
- If your device has an LCD screen which is damaged, do not touch the liquid crystal fluid.

WARNING

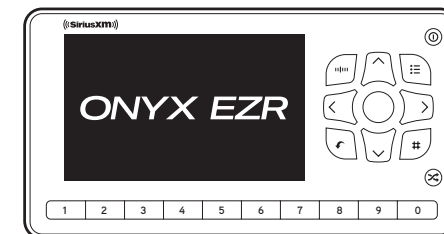
- Opening the case may result in electric shock.
- If your device has an LCD screen, and the liquid crystal fluid comes in contact with your skin, wipe the skin area with a cloth and then wash the skin thoroughly with soap and running water. If the liquid crystal fluid comes into contact with your eyes, flush the eyes with clean water for at least 15 minutes and seek medical care. If the liquid crystal fluid is ingested, flush your mouth thoroughly with water. Drink large quantities of water, and induce vomiting. Seek medical care.
- Make sure that you insert the PowerConnect™ Power Adapter all the way into the vehicle's cigarette lighter or power adapter socket.
- If you are using PowerConnect as your audio connection option, it is advisable not to insert a multi-outlet adapter into the same vehicle cigarette lighter or power adapter socket to simultaneously power other devices. Some multi-outlet adapters can prevent the PowerConnect feature from working properly.
- When using this product, it is always important to keep your eyes on the road and hands on the wheel. Not doing so could result in personal injury, death, and/or damage to your device, accessories, and/or to your vehicle or other property.
- Vehicle installation, service activation, and Radio configuration functions should not be performed while driving. Park your vehicle in a safe location before beginning installation.
- This product contains chemicals known to the State of California to cause cancer and birth defects or other reproductive harm.

Additional User Documents

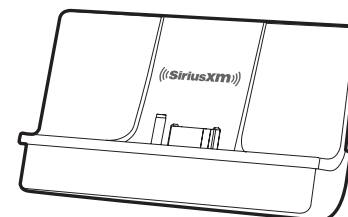
Additional user documents are available at www.siriusxm.com/guides.

What's in the Box?

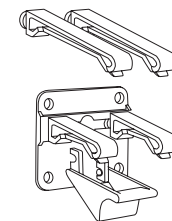
CAUTION: Do not attempt to install, activate, or adjust any of the setting options described in this Quick Start Guide unless your vehicle is parked in a safe location.



Onyx EZR Radio



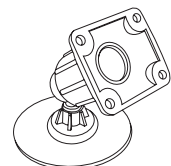
PowerConnect™ Vehicle Dock



Vent Mount and Extended Vent Clamps



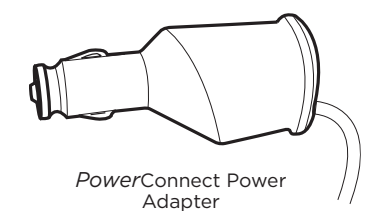
Antenna & Dash Mount Alcohol Preparation Pads



Dash Mount



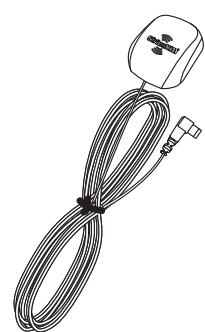
Screws (4)



PowerConnect Power Adapter



Aux In Cable



Magnetic Mount Antenna

1 Find a Location for Onyx EZR and Mount it

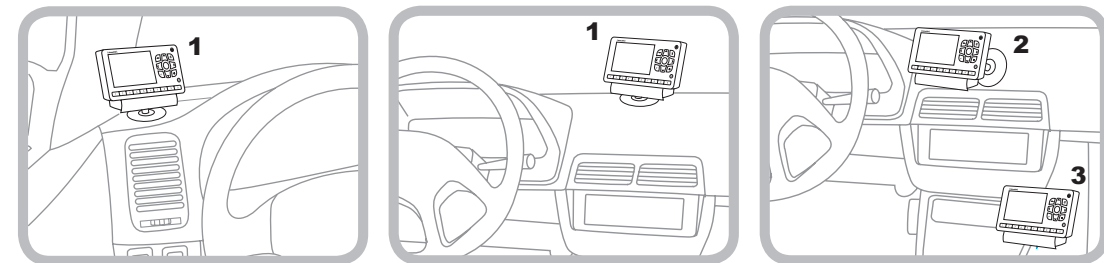
Select either the **Dash Mount** method or the **Vent Mount** method for your Onyx EZR. You will need a phillips-head screwdriver to complete the installation.

IMPORTANT! To make the cable connections easier, wait until after you have connected all the cables to the dock before you attach the dock to the dash or to a vent.

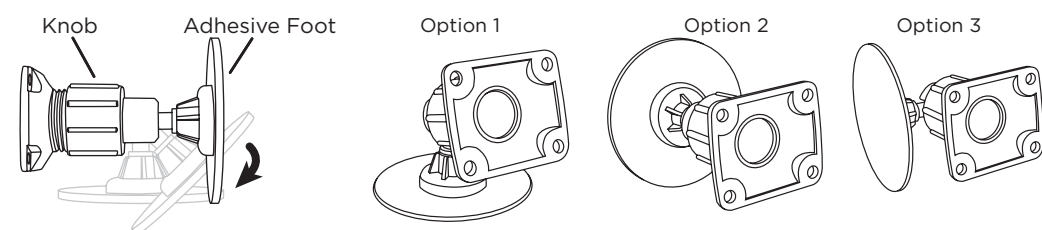
Dash Mount Method:

IMPORTANT: The air temperature needs to be at least 60°F to install the Dash Mount. If needed, turn on the heater in your vehicle.

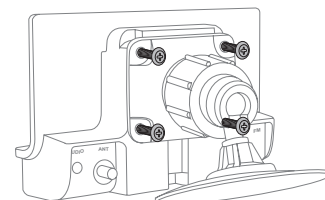
- A. Select a flat surface for the Dash Mount with ample room for Onyx EZR. Avoid mounting on leather surfaces. Choose a location that doesn't interfere with the driver's vision or access to driving controls, one that won't interfere with the deployment of airbags or other safety equipment, and makes Onyx EZR easily accessible for operation. (Airbag locations are typically marked with "SRS" logos.)



- B. Orient the adhesive foot so that Onyx EZR is easily accessible. Loosen the knob and adjust the adhesive foot to position **1**, **2**, or **3**, and then tighten it.

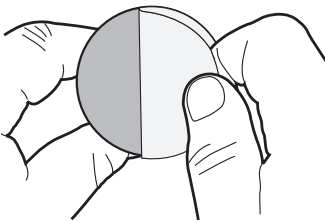


- C. Attach the Dash Mount to the *PowerConnect* Vehicle Dock using the 4 provided screws.



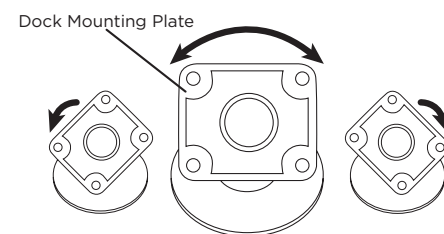
- D. Before you attach the Dash Mount to the dash, skip ahead and finish the remainder of the vehicle installation so that the cables are attached to the dock.

- E. Once the cables have been attached to the dock, clean the mounting surface in the vehicle with the alcohol preparation pad and let it dry thoroughly.



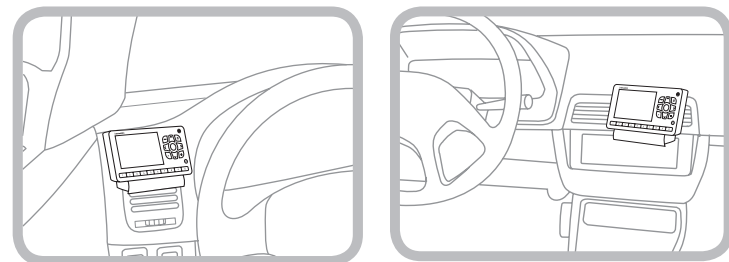
- F. Once the surface is dry, remove the adhesive liner. Press and hold the Dash Mount in place for 30 seconds. Allow the adhesive to cure for 2-4 hours.

- G. You can tilt the dock mounting plate in your preferred direction.



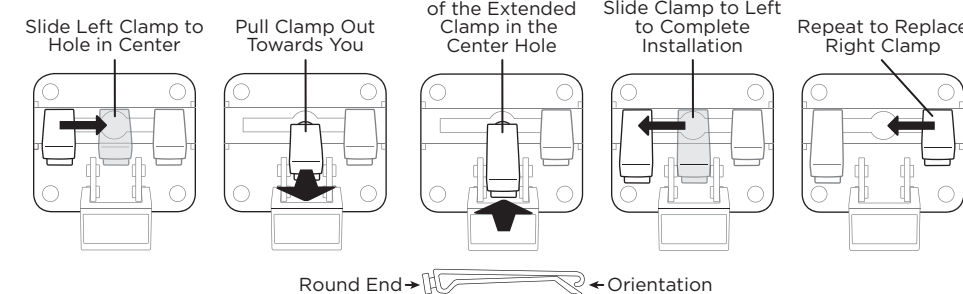
Vent Mount Method:

- A. Select a vent with ample room for Onyx EZR, one that won't interfere with the deployment of airbags or other safety equipment, and makes Onyx EZR easily accessible for operation. (Airbag locations are typically marked with "SRS" logos.)



- B. Some vents have recessed louvers. If yours are recessed, remove the regular vent clamps and install the extended vent clamps.

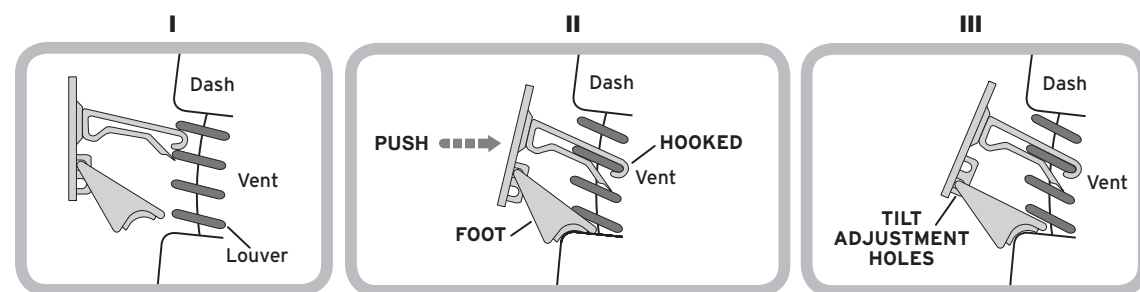
Vent Mount Rear View



- C. Attach the Vent Mount to the *PowerConnect* Vehicle Dock using the 4 provided screws.

- D. Before you attach the Vent Mount to the vent, skip ahead and finish the remainder of the vehicle installation so that the cables are attached to the dock.

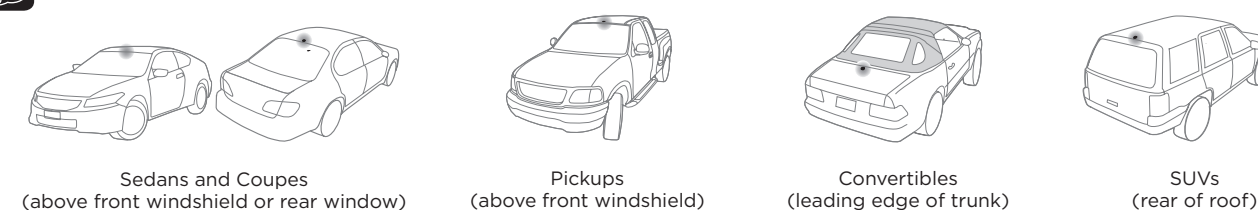
- E. Once the cables have been attached to the dock, install the Vent Mount onto the vehicle vent. (Note that for clarity the illustrations below do not show the Vehicle Dock attached to the Vent Mount.)
 - Insert the vent mount into the vent opening.
 - Push until hooked on the rear of the vent louver. Rest the foot against the bottom of the vent.
 - If necessary, adjust the tilt of the Vent Mount by repositioning the foot to a different tilt adjustment hole.



2 Mount the Magnetic Mount Antenna

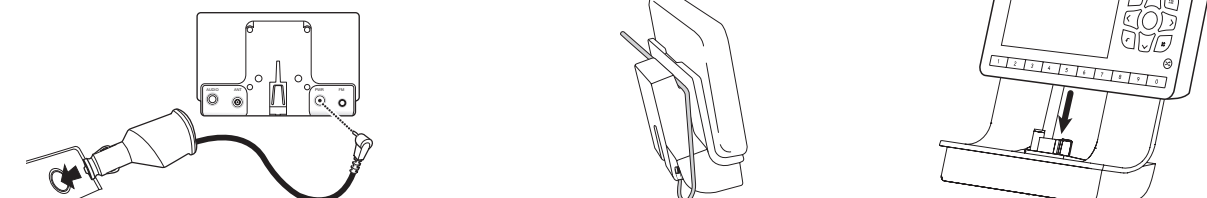
- A. Mount the Magnetic Mount Antenna outside your vehicle, on a clean and dry horizontal surface that will always face the sky.
- B. Choose the location for the antenna according to your type of vehicle. Center it between the left and right sides, and away from other antennas.

TIP: Use the Alcohol Prep Pad to clean the surface.



4 Connect the PowerConnect Power Adapter

- A. Insert the *PowerConnect* Power Adapter into your vehicle's cigarette lighter or power adapter socket. Plug the other end into the **red PWR** connector at the rear of the *PowerConnect* Vehicle Dock.
- B. Use the wire guide on the top of the dock to organize the wires connected to the dock.
- C. Place Onyx EZR into the dock and press the **Power** button.



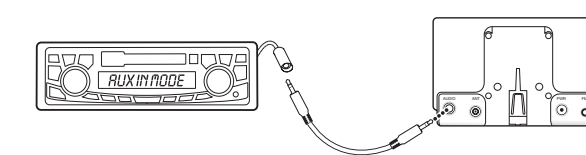
6 Connect the Audio

Decide on one of the following in-box audio connection options. You can also refer to "Connect the Audio" in the Onyx EZR User Guide (with Vehicle Kit) for additional audio connection options, such as a cassette adapter or the FM Direct Adapter (FMDA) (both sold separately). Go to www.siriusxm.com/guides for the User Guide.

Option 1: Best: Use the provided **Aux In Cable**, if your vehicle's stereo system has an auxiliary input jack.

- A. Plug one end of the cable into the **green AUDIO** connector at the rear of the *PowerConnect* Vehicle Dock and the other end into the auxiliary input jack on the vehicle's stereo system.
- B. Turn on your vehicle's stereo system and set it to play from the auxiliary input source.
- C. You should hear XM Preview channel 1 through your vehicle's stereo system.
- D. Go back to Step 1 "Find a Location for Onyx EZR and Mount It" on the opposite side and finish installing the Dash or Vent Mount. Then the installation is complete.

TIP! Refer to your vehicle's owner's manual to find the location of the auxiliary input jack, or consult the vehicle dealer.



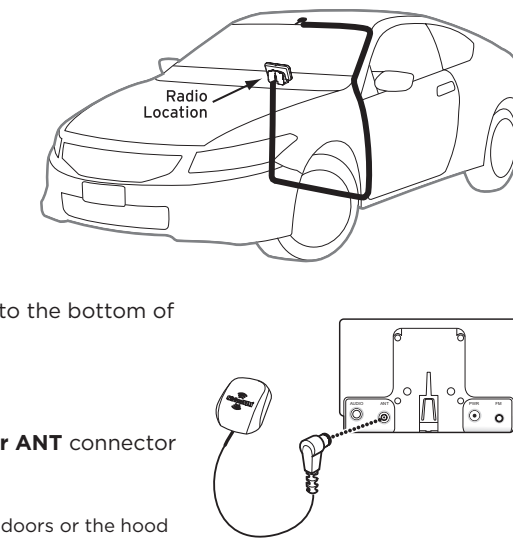
(continues on back page)

3 Route the Antenna Cable

NOTE: These instructions are for a sedan or coupe where the antenna is mounted above the front windshield. The Onyx EZR User Guide (with Vehicle Kit) has detailed antenna cable routing instructions for all types of vehicles. Go to www.siriusxm.com/guides for the User Guide.

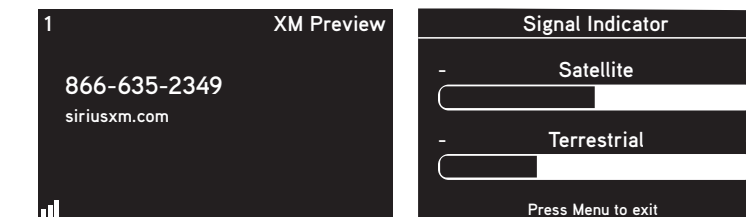
- A. Tuck the antenna cable under the windshield rubber molding and run it to the nearest corner.
- B. Route the cable out of the molding and into the rubber weather stripping around the door opening.
- C. Lift the weather stripping. Tuck and run the cable inside it to the bottom of the door opening. Replace the weather stripping.
- D. Pull the cable out and route it to Onyx EZR.
- E. Plug the Magnetic Mount Antenna connector into the **silver ANT** connector at the rear the *PowerConnect* Vehicle Dock.

TIP: Include enough slack in your routing to accommodate open doors or the hood lid. Coil any excess cable in a hidden location and keep it away from any vehicle pedals or controls.



5 Verify Signal Reception

- A. Be sure the vehicle is outside and the antenna has a clear view of the sky.
- B. Verify that you are receiving the XM signal. The Onyx EZR Radio should be tuned to XM channel 1, the XM Preview channel. There should be at least two bars on the lower left corner of the screen that denotes antenna signal strength. If not, be sure that you have mounted the antenna on the outside of the vehicle, as shown in step 2, and that the vehicle is parked outdoors with a clear view of the sky. Move the vehicle away from any obstructed area, for example, if you are parked in a garage, or parked near a large structure.



- C. You can also press **menu** and then press **▼** to scroll to and highlight **Signal Indicator**. Press the **Select** button. The Satellite and Terrestrial bars show the strength of the signal being received. If the signal reception is good, press and hold **menu** to return to XM channel 1, the XM Preview channel.

