

DO NOT PRINT  
MAGENTA LINES



(positive artwork)



(negative artwork)

# PAL label artwork

## Reference P/N XMTSK02343

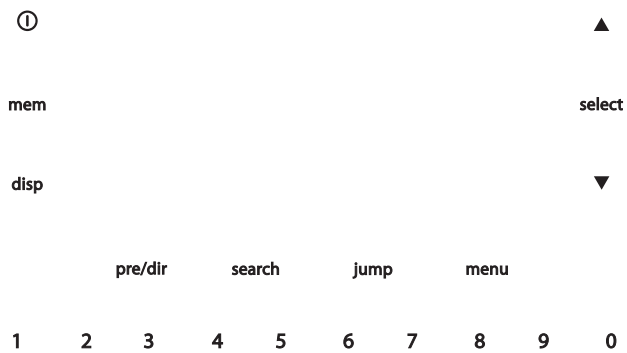
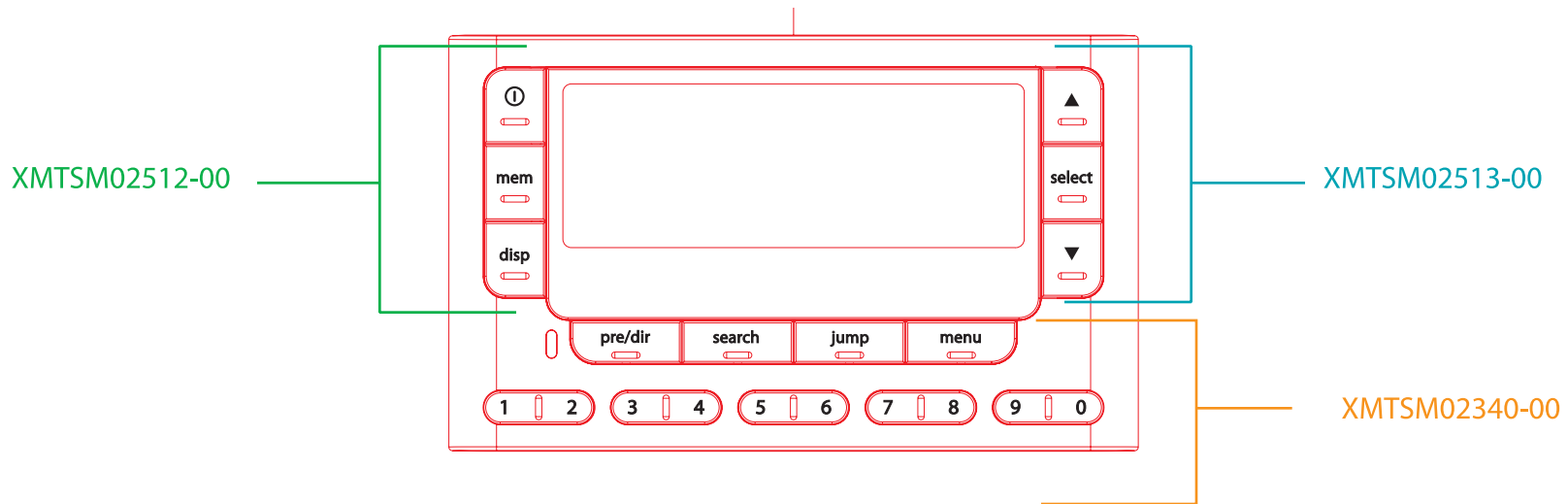
Notes:

- Label is PMS 426 C (Black) printed on a matte silver polyester
- Red graphics on label indicate post-printing to be done by the manufacturer



SATELLITE  
RADIO

4.22.2005



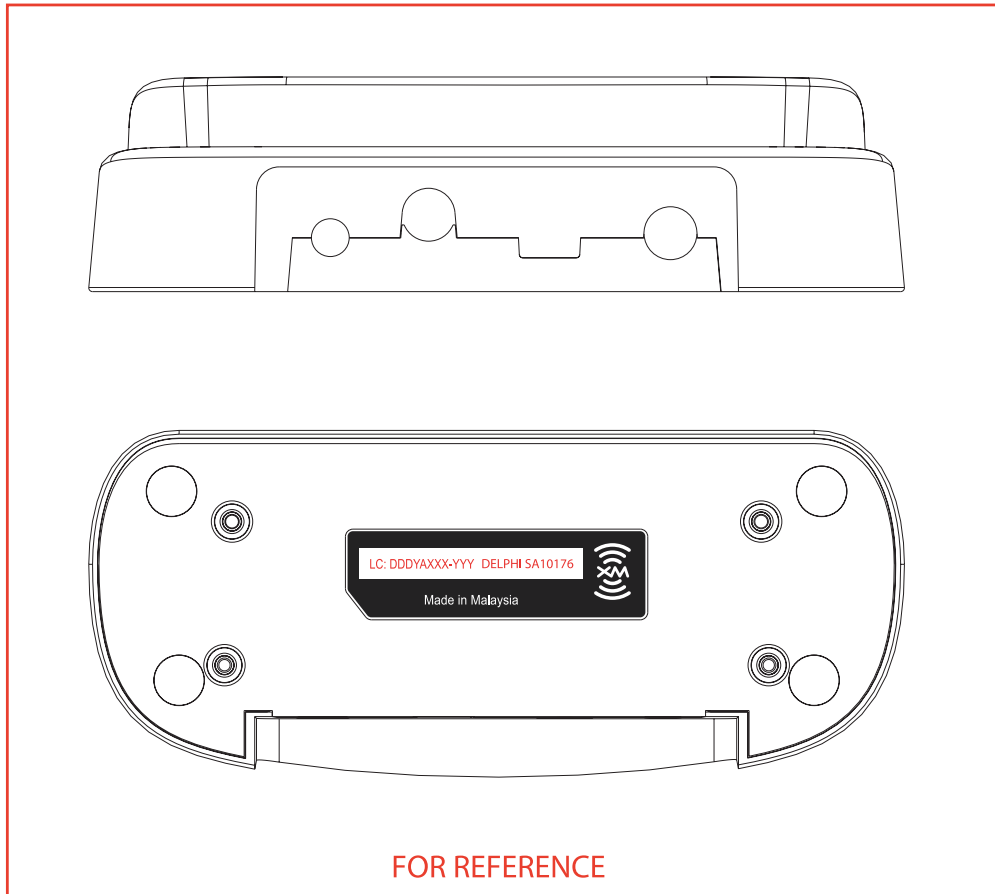
## PAL button artwork

for P/Ns XMTSM02512, XMTSM02513, and XMTSM02340

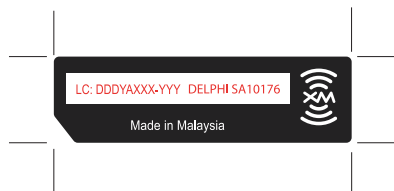
**Note:** Artwork for laser etching of painted surfaces

- Graphics on XMTSM02512 and XMTSM0213 are vertically centered on buttons.
- pre/dir, search, jump, and menu are vertically centered on buttons
- 1 - 0 graphics are horizontally centered on buttons

Label



FOR REFERENCE



(positive artwork)



(negative artwork)

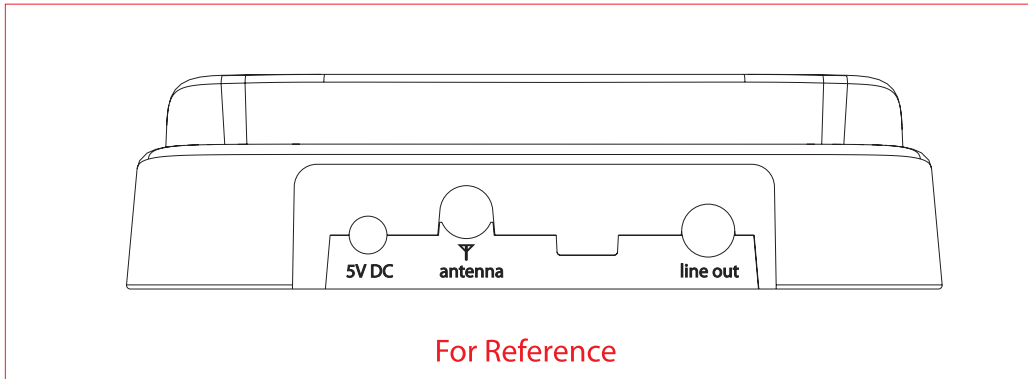
# PAL home dock label artwork

## Reference P/N XMTSK02432

Notes:

- Label is PMS 426 C (Black) printed on a matte silver polyester
- Red graphics on label indicate post-printing to be done by the manufacturer

## Graphics



5V DC      antenna      line out

# PAL home dock graphics for P/N XMTSM02431

### Notes:

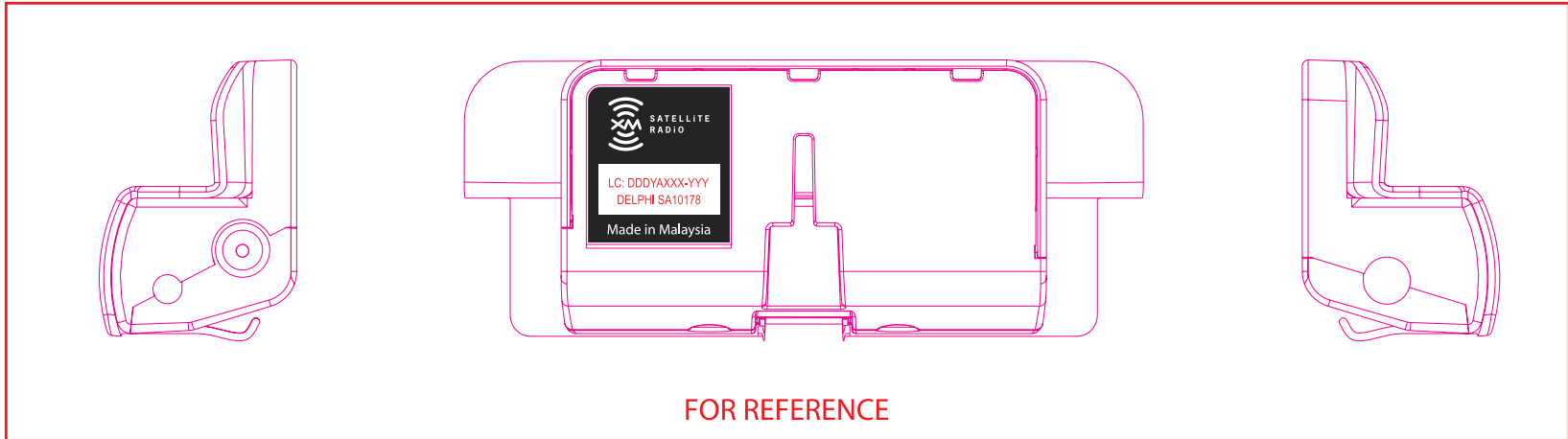
- Print graphics in PMS Cool Gray 7 C
- All graphics are aligned on vertical centerlines of connector holes



SATELLITE  
RADIO

4.22.2005

Label



(positive artwork)



(negative artwork)

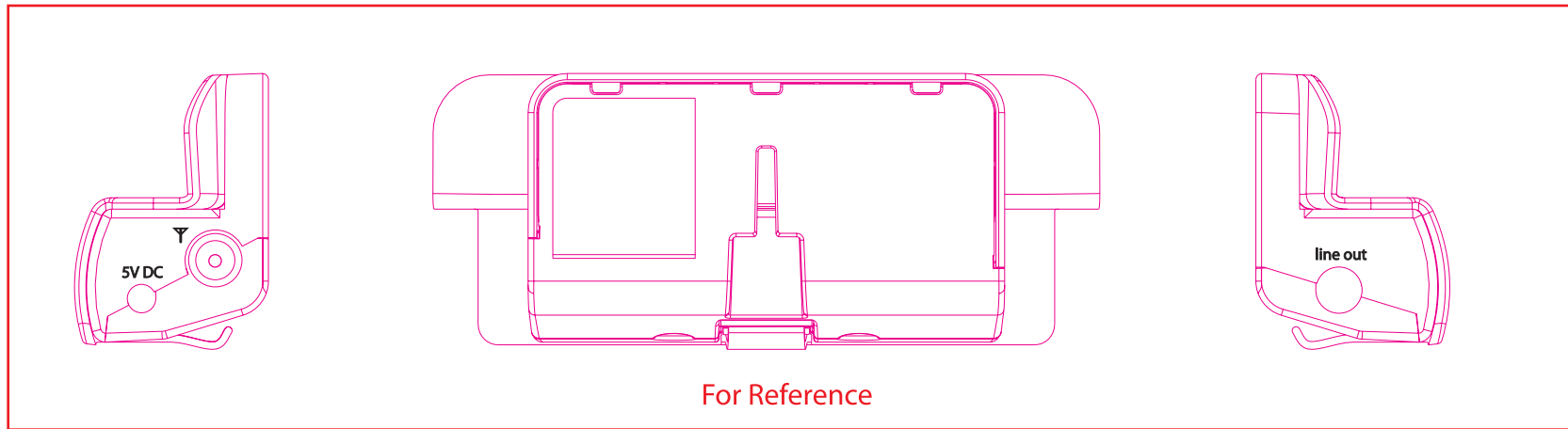
## PAL car label artwork

### Reference P/N XMTSK02427

Notes:

- Label is PMS 426 C (Black) printed on a matte silver polyester
- Red graphics on label indicate post-printing to be done by the manufacturer

## Graphics



▽  
5VDC

line out

# PAL car dock graphics for P/N XMTSM02424

## Notes:

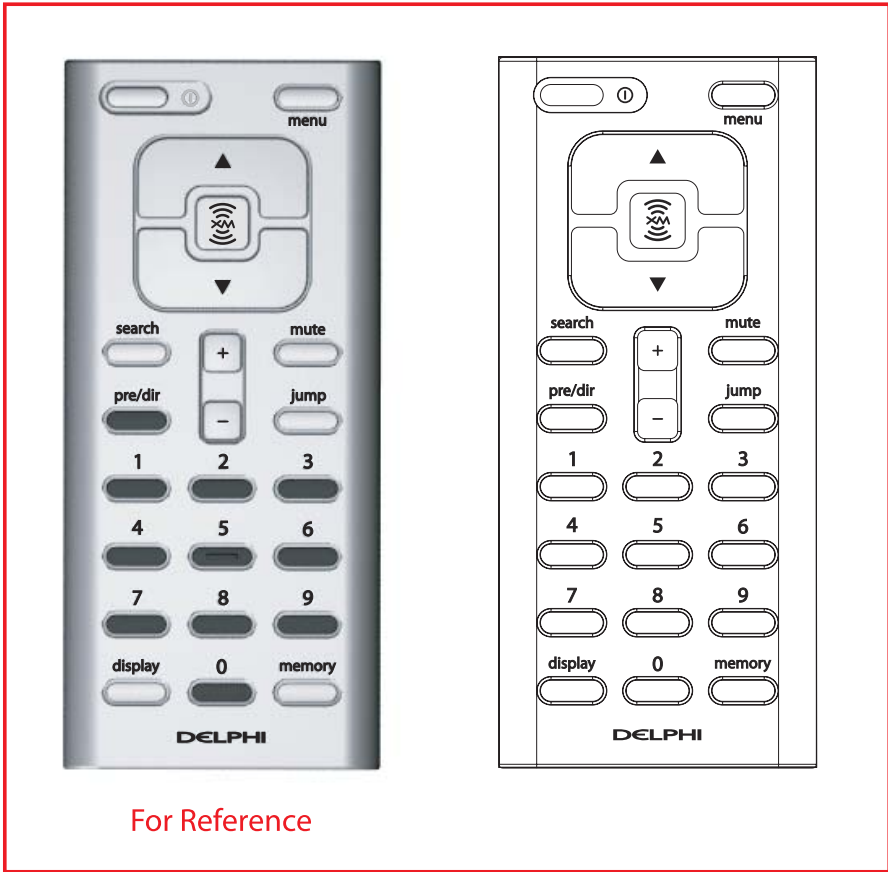
- Print graphics in PMS Cool Gray 7 C
- Align "5V DC" and "line out" on vertical centerlines of connector holes



SATELLITE  
RADIO

4.22.2005

 Pantone 426 C black



PMS 426 C

## PAL remote artwork

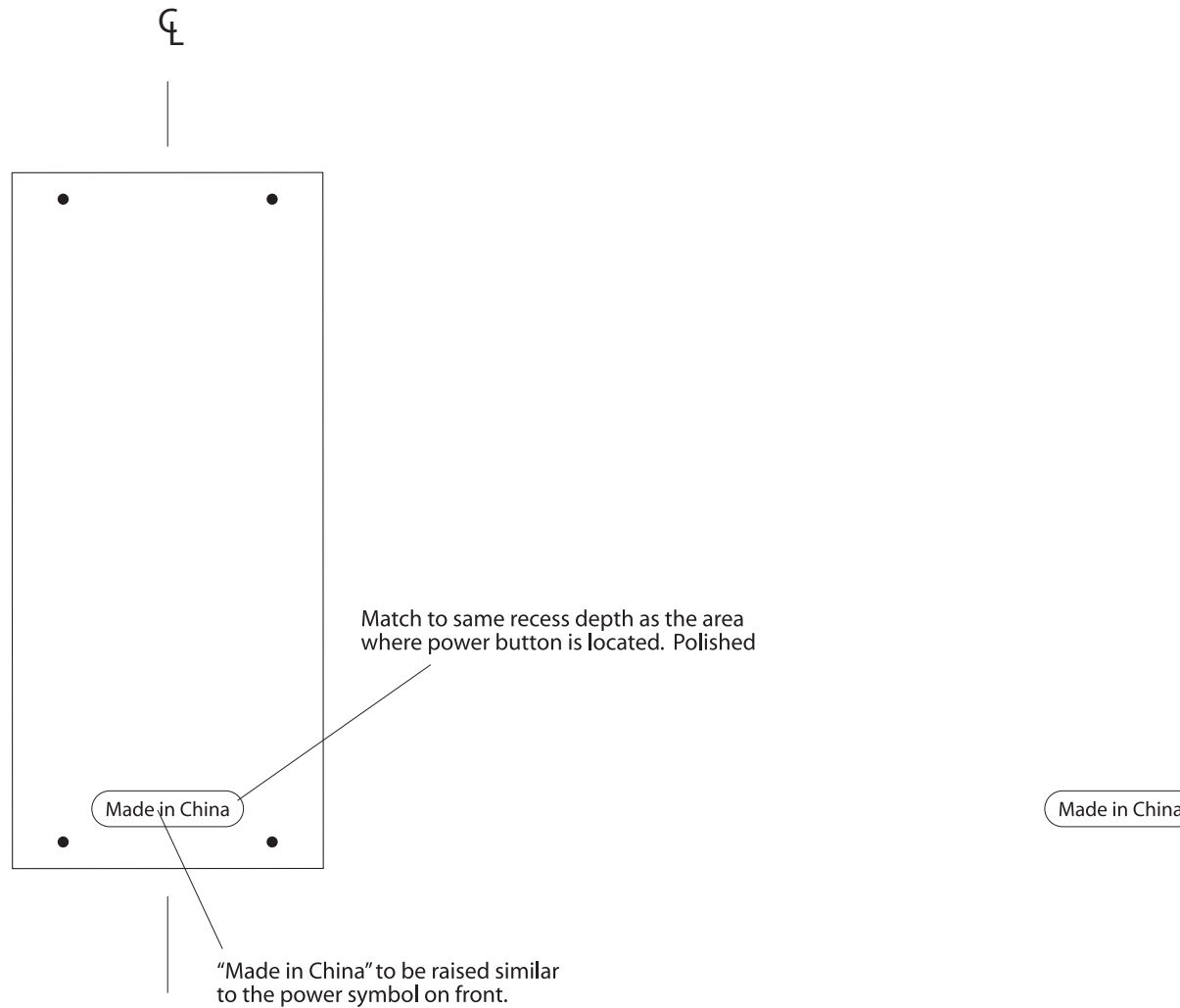
### Notes:

- Print graphics in PMS 426 C black
- All graphics are aligned on vertical centerlines of their corresponding buttons
- Delphi logo is vertically centered on product centerline.



SATELLITE  
RADIO

4.25.2005



## PAL remote "Made in China"

Notes:

- "Made in China" should look similar to the raised power symbol on the front of the remote.
- Recess should match recess depth on front of remote where power symbol is located.