

sportscaster™

YOUR SEASON TICKET TO XM SATELLITE RADIO

XM Satellite Radio Receiver



Instruction Manual

Model R101



Advanced Global Technology, LLC.




Important: This manual contains important safety and operating information. Please read, understand, and follow the instructions in this manual. Failure to do so could result in personal injury, death, and/or damage to your Sportscaster, accessories, and/or to your vehicle or property.

This device complies with Part 15 of the FCC Rules.

Operation is subject to the following two conditions:

- 1. This device may not cause harmful interference, and**
- 2. This device must accept any interference received, including interference that may cause undesired operation.**

The AGT XM Sportscaster Satellite Radio Receiver incorporates an FM transmitter and is therefore classified as an intentional transmitter. Changes or modifications to the unit not expressly approved by AGT can void your authority to operate this equipment.

 IMPORTANT: The FCC and FAA have not certified the AGT XM Sportscaster Satellite Radio Receiver for use in any aircraft (neither portable nor permanent installation). Therefore, AGT cannot support this type of application or installation.


 This is the safety alert symbol. It is used to alert you to potential personal injury hazards. Obey all safety messages that follow this symbol to avoid possible injury or death.

Table of Contents

A Brief History	4
About Advanced Global Technology	4
About XM Satellite Radio	4

A Brief History

Thank you for purchasing the new AGT Sportscaster Satellite Radio Receiver-smaller, lighter, and more versatile than any receiver available.

- Dock your Sportscaster into cradles that are easily installed in your vehicle or your home. Connect your Sportscaster's power, and antenna connectors and you are ready to enjoy XM Satellite Radio.
- A built-in FM transmitter allows you to hear XM programming on your car or home FM radio, using an unused frequency on the FM band.
- Available accessory kits make your Sportscaster useable in the home or on the go.

About Advanced Global Technology

Advanced Global Technology (AGT) is a worldwide leader in mobile, home and portable electronics and audio technology. With its exciting line of satellite radio products, AGT offers a broad portfolio of products to answer a wide variety of information and entertainment needs-in the vehicle, home, office, and portable environments.

About XM Satellite Radio


XM Satellite Radio is the nation's leading provider of satellite radio with more than 6 million subscribers. XM offers more than 160 digital radio channels: 100% commercial-free music channels, ranging from hip hop to opera, rock to bluegrass, big band to reggae; 71 talk radio channels, including news, sports, comedy, and children's programming; and 21 channels of round-the-clock traffic and weather reports. Subscribers pay \$12.95 a month for the XM service, which was named Best Radio Service by the music industry's leading magazine Billboard at the 2004 Digital Entertainment Awards. Exclusive programming on XM includes Major League Baseball® games for every team, all season long. You can listen to XM on a variety of satellite radio receivers for the vehicle, home, and portable use. In-dash XM radios are available in more than 120 vehicle models for the 2006 model year. XM is broadcast via satellite from coast to coast, so you can listen to XM continuously as you travel across the country.


* To receive the XM service, you must subscribe to XM. Available in the continental United States and Canada only. Satellite radio reception depends on the ability of the antenna to receive a signal. The signal may not be available in buildings or if obstructed (e.g., by mountains, trees, bridges, etc).


Let's Get Started


First, some important reminders:

We know you're eager to turn on your new Sportscaster and listen to XM, but please take a moment to read through this instruction manual.

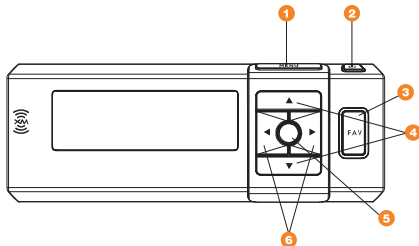
 **Warning:** This manual contains important safety and operating information. Please read, understand, and follow the instructions in this manual. Failure to do so could result in personal injury, death, and/or damage to your Sportscaster, accessories, and/or to your vehicle or property.

 **Warning:** When using this product it is always important to keep your eyes on the road and your hands on the wheel. Not doing so could result in injury and/or death to you or to others and/or in property damage.

 **Caution:** Use your Sportscaster only with the enclosed components or approved accessories. Do not modify wires or other connectors in any way; you could cause a malfunction, which could damage your Sportscaster and will void your warranty.

 **Caution:** Refrain from using food or drinks near your Sportscaster. Spilling food or drinks on the unit can damage it. Also, improperly installing the antenna cable can cause leaks, which can damage your Sportscaster and/or your vehicle.

Controls



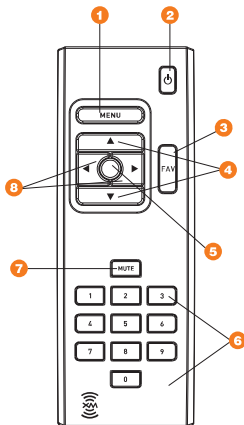
1. **Menu** - access advanced features and configuration options
2. **Power**
3. **Fav (Favorites)** - store up to 30 of your favorite channels
4. **Up and Down Arrows** - change channels, menu options
5. **Select** - enter, change display mode options
6. **Right and Left Arrows** - change categories, menu options

Display



1. **Signal Strength Indicator** - 1 to 3 bars
2. **Power Connection Indicator** - displayed when connected to external power
3. **Battery Indicator** - displays battery strength and charging status
4. **Alarm Indicator** - displayed when alarm clock feature is active
5. **Mute**
6. **Auto Off Indicator** - displayed when auto shutdown feature is active
7. **Sleep Indicator** - displayed when sleep mode feature is active
8. **Fav (Favorites)** - displayed when favorite tuning mode is active
9. **Additional Info** - channel name, channel number, category name, artist, song title, time and other information.

Remote Control



1. **Menu** - access advanced features and configuration options
2. **Power**
3. **Fav (Favorites)** - store up to 30 of your favorite channels
4. **Up and Down Arrows** - change channels, menu options
5. **Select** - enter, change display mode options
6. **Numbers** - enter a channel directly
7. **Mute**
8. **Right and Left Arrows** - change categories, menu options

Activating Your Sportscaster

Use the Up and Down Arrow buttons to tune Channel 0, then push the "Select" button. You should see an 8-character XM Radio ID in the display. The XM Radio ID is also Printed on the package.)



Please write the XM Radio ID here:

--	--	--	--	--	--	--	--

Note: Carefully check your XM Radio ID. **The letters I, O, S, and F are not used.**

Activate your XM Satellite Radio service by contacting XM at <http://activate.xmradio.com> or by calling 1.800.XM.RADIO (1.800.967.2346). You will need your XM Radio ID and a major credit card.

XM will send a signal from the satellites to activate the full channel lineup. Activation normally takes 10 to 15 minutes, but during peak busy periods, you may need to keep your Sportscaster on for up to an hour to complete the activation process. When you can access the full channel lineup on your Sportscaster, you're done!

Warning: When using this product it is always important to keep your eyes on the road and your hands on the wheel. Not doing so could result in injury and/or death to you or to others and/or in property damage.

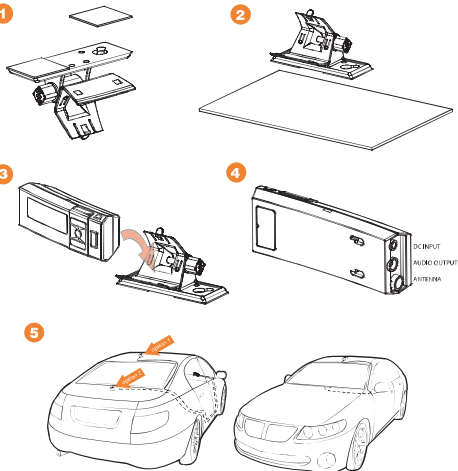
Warning: Failure to do so could result in personal injury, death, and/or damage to your Sportscaster, accessories, and/or to your vehicle or property.

Installation

Mounting to the Dashboard or Console

If using the AMP's mounting holes to fasten the Sportscaster vehicle mount to your dash or console, Bolt or screw the Sportscaster vehicle mount in place and proceed to step 3.

1. Remove the protective film from one side of the supplied double sided tape. Press firmly to secure the tape to the bottom of the vehicle mount. (Figure 1).
2. Remove the protective film from the remaining side of the double sided tape. Place the vehicle mount in the appropriate location on the vehicle's dash or console and press firmly. (Figure 2).
3. Push the sportscaster into the vehicle mount until it locks into place. (Figure 3). To remove the Sportscaster, push the release tab on the top of the vehicle mount upward and pull the Sportscaster forward.
4. Connect the DC Power, antenna and audio connectors (if required) to the appropriate jacks. (Figure 4).
5. For best reception, place the XM antenna on the vehicle's metallic roof, at least 6" from any window or sunroof. It can be placed in the front, middle, or rear of the roof. (Figure 5).

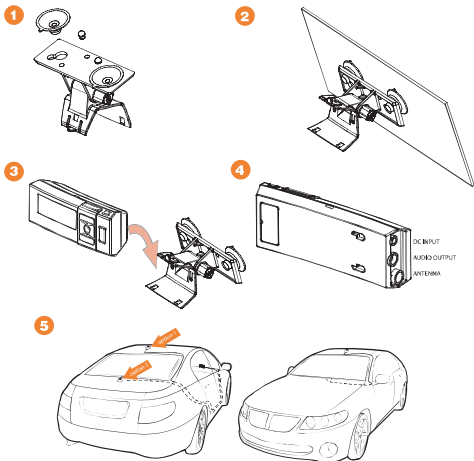


If the car is a convertible, you may mount the antenna on the metal trunk lid. It should be at least 4" from the rear window. Ensure that the antenna and cable don't interfere with the opening or closing of the convertible top and the trunk lid.

Installation

Mounting to the Windshield

1. Insert the 2 suction cups into the larger side of the holes on the vehicle mounting bracket and slide outward to lock in place. (Figure 1).
2. Loosen the thumb screw and rotate the Sportscaster vehicle bracket to the appropriate angle for your vehicle's windshield. Retighten the thumb screw. Place the suction cups on the Sportscaster vehicle mount in an appropriate location on your windshield. Press firmly to secure the Sportscaster in place. (Figure 2).
3. Push the Sportscaster into the vehicle mount until it locks into place. (Figure 3). To remove the Sportscaster XM Satellite Radio Receiver, push the release tab on the top of the Sportscaster vehicle mount upward and pull the Sportscaster forward.
4. Connect the DC Power, antenna and audio connectors (if required) to the appropriate jacks. (Figure 4).
5. For best reception, place the XM antenna on the vehicle's metallic roof, at least 6" from any window or sunroof. It can be placed in the front, middle, or rear of the roof. (Figure 5).

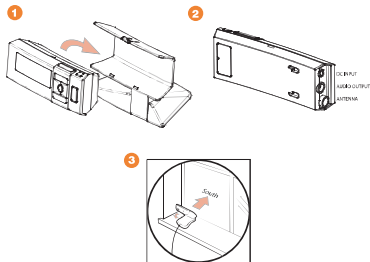


If the car is a convertible, you may mount the antenna on the metal trunk lid. It should be at least 4" from the rear window. Ensure that the antenna and cable don't interfere with the opening or closing of the convertible top and the trunk lid.

Installation

Mounting in the Home

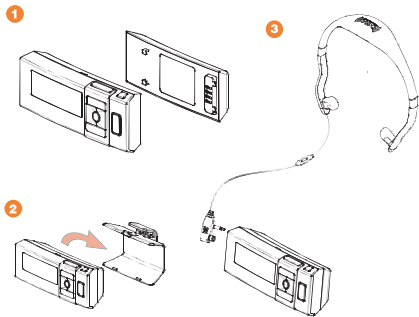
1. Push the Sportscaster into the home mount until it locks into place. (Figure 1). To Remove the Sportscaster, push the release tab on the top of the home mount upward and pull the Sportscaster forward.
2. Connect the AC Power, antenna and audio cable (if required) to the appropriate jacks. (Figure 2).
3. Place the antenna on a window or an exterior wall so that it points south. (Figure 3).



Installation

Using the Wearable Kit

1. Attaching the battery to your Sportscaster is simple. First, install battery by lining up the battery with the slots in the back of your Sportscaster. Next, slide the battery into place until it is locked. (Figure 1). For a complete charge, the battery must be charged for approximately 3 hours. The battery life is approximately 4 hours.
2. To attach the belt clip onto your Sportscaster, push the Sportscaster into the belt clip until it locks into place. (Figure 2). To remove the Sportscaster, push the release tab on the top of the belt clip upward and pull the Sportscaster forward.
3. Plug the connector of the integrated XM antenna headset into the connectors with the wire exiting upwards as shown in (Figure 3).



Listening to XM

Tuning Categories and Channels

Categories

The XM channels are arranged by categories. The Left and Right Arrow buttons move Sportscaster forward or backward through the available XM categories. Pressing the select button enters first channel in that category. The Up and Down Arrow buttons are then used to tune to a channel from within the selected category. After displaying the desired channel, press the select button to tune that channel.

You can tune through all the available XM channels in all categories using the "All Channels" Category option within the Category listings.

Direct Tuning via Remote Control (only)

You can select a channel directly by entering its channel number with the Remote Control numeric buttons. Channel 12 can be entered as "1", followed by "2", and pressing the select button. You may also input "0", followed by "1", and "2". If the Select button is not pressed within ten seconds, the Sportscaster returns to the previously tuned channel.

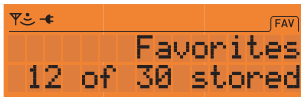
Note: Channel numbers which do not have channels assigned to them, that are blocked, or that are not authorized for the Sportscaster will not be displayed during navigation.

Channels 0 and 1

You can navigate to channel 0 or 1 from within the "All Channels" Category option or by direct tuning via the Remote Control. Channel "0" displays the Radio ID, Channel "1" is the XM preview channel

FAV (Favorite Channels)

The FAV feature allows you to store up to 30 of your favorite channels. Press the FAV button and the display will show the following:



The top line will show FAV, the lower line shows the number of Favorites stored out of the 30 locations available (X of 30 stored).

Storing Favorites

If you would like to store a favorite channel, tune to the desired channel and press the FAV button for 2 seconds. The message "Favorite Stored" is displayed on the first line, the lower line will display the Channel Name and Channel Number for 3 seconds.



Exceptions to Storing Favorites

If 30 favorites are already stored, SportsCaster will indicate that the favorite locations are full.

If a channel has already been stored, the channel can not be stored again. In this case the Favorite Exists message will appear:

Tuning Favorites

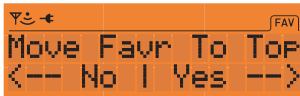
There are two ways to tune to your Favorite channels:

1. Pressing the FAV button moves the SportsCaster through the stored Favorites in succession. Favorites are accessed in the order they are stored.
2. Press the Up and Down Arrow buttons to navigate forward or backward through the stored Favorites.

Customizing Your Favorites

Move Favorite to Top

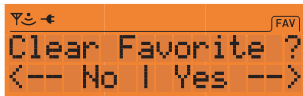
You can move any stored Favorite channel to the first position in your Favorites list. To move the favorite channel you are currently listening to, press and hold the Select button down for 2 seconds. The following message appears on the display.



Select Yes to move the stored channel to the first position. A confirmation message indicating 1 of 30 stored is displayed. Select No to return to the first stored favorite.

Deleting Favorites

To delete a Favorite channel, tune to that channel. Press and hold the FAV button down for 2 seconds. The following message will appear.



Select Yes to delete that channel. A confirmation message indicating Favorite Cleared is displayed. Select No to return to the first stored favorite.

Exiting Favorites Mode

Press either of the Left or Right Arrow buttons to Category tune and exit Favorites mode. The FAV indicator will be deactivated on the display.

Personalizing Your Sportscaster

You can easily adapt your Sportscaster to suit your listening habits. Simply press the Menu button to see the options you can customize. Pressing the Menu button enters the menu options mode. The menus are then navigated using a combination of the Select, Menu, and the Up/Down/Left/Right Arrow buttons.

Any Menu option that has a sub-menu is displayed with a right-facing arrow. Pressing the Right Arrow or Select button will enter the submenu(s).

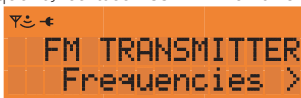
When a menu option is selected the display flashes to indicate the selection is stored. The Sportscaster returns to the initial display of the current submenu.

FM Transmitter



Frequencies

This feature will enable the Sportscaster to broadcast XM content via a wireless Transmitter on an FM frequency between 88.1MHz to 107.9MHz.



Note: 88.1 is the default frequency.

1. Press the Menu button to enter the Setup Menu.
2. Press the Up and Down Arrow buttons to navigate to FM Transmitter.
3. Press the Select or Right Arrow button to enter the FM Transmitter sub menu.
4. Press the Up or Down Arrow buttons to navigate to Frequencies.
5. Press the Up Arrow button to choose an available frequency that is not being used by an FM Broadcaster in your area.
6. Press the Select button to store the frequency.

Note: The FM frequency you select may need to be changed when traveling. This is due to the differences in signal strength of local FM stations and is not a problem with your Sportscaster.

If the FM transmitter is Off the user is prompted to turn the FM transmitter On after selecting a frequency.

FM On/Off

Press the Up/Down Arrow buttons to FM On/Off.

Note: FM Off is the default setting.



Press the Select button to turn FM Transmitter On or Off as desired.

Note: The FM transmitter is automatically turned off when using Sportscaster in portable mode with the optional wearable kit to conserve battery power.

Audio Level



The Audio Level option adjusts the Sportscasters audio output. There are 10 levels of adjustment available.

1. Press the Menu button to enter the Setup Menu.
2. Press the Up or Down Arrow button to navigate to Audio Level.
3. Press the Select or Right Arrow button to enter the Audio Level sub menu.
4. Press the Left or Right Arrow button to adjust the audio level to your comfort.
5. Press the Select button to store the new setting.



Note: The default setting is level 3.

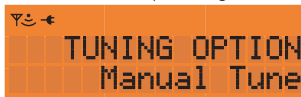
Tuning Options



The Tuning Options are used to set the method that channels are tune. There are two tuning options available.

Manual Tune

Manual Tune mode allows the user to choose channels by viewing the programming and tuning the desired channel only after pressing the Select button.



1. Press the Menu button to enter the Setup Menu.
2. Press the Up or Down Arrow button to navigate to Tuning Options.
3. Press the Select or Right Arrow button to enter the Tuning Options sub menu.
4. Press the Up or Down Arrow button to navigate to Manual Tune.
5. Press the Select or Right Arrow button to set Manual Tune mode.

Note: The default setting is Manual Tune.

Auto Tune

Auto Tune will tune to each channel when the channel is viewed without pressing the Select button.



1. Press the Menu button to enter the Setup Menu.
2. Press the Up or Down Arrow button to navigate to Tuning Options.
3. Press the Select or Right Arrow button to enter the Tuning Options sub menu.
4. Press the Up or Down Arrow button to navigate to Auto Tune.
5. Press the Select or Right Arrow button to set Auto Tune mode.

Display Options

Contrast



This option is used to adjust the Sportscasters display contrast. There are 10 levels of adjustment available.



1. Press the Menu button to enter the Setup Menu.
2. Press the Up or Down Arrow buttons to navigate to Display Options.
3. Press the Select or Right Arrow button to enter the Display Options sub menu.
4. Press the Up or Down Arrow buttons to navigate to Contrast.
5. Press the Select or Right Arrow button to enter the Contrast setting screen.
6. Press the Left or Right Arrow button to adjust the contrast to your desired level.
7. Press the Select button to store the new setting.



Note: The default setting is level 8.

Brightness

This option is used to adjust the Sportscasters display brightness. There are 10 levels of adjustment available.



1. Press the Menu button to enter the Setup Menu.
2. Press the Up or Down Arrow button to navigate to Display Options.
3. Press the Select or Right Arrow button to enter the Display Options sub menu.
4. Press the Up or Down Arrow button to navigate to Brightness.
5. Press the Select or Right Arrow button to enter the Brightness setting screen.
6. Press the Left or Right Arrow button to set the brightness to your desired level.
7. Press the Select button to store the new setting.



Note: The default setting is level 8.

Cycle Display

This option alternates the Sportscaster through the three available displays modes at five second intervals. See below for a description of the available views.

1. Press the Menu button to enter the Setup Menu.
2. Press the Up or Down Arrow buttons to navigate to Display Options.
3. Press the Select or Right Arrow button to enter the Display Options sub menu.
4. Press the Up or Down Arrow buttons to navigate to Cycle Display.
5. Press the Select or Right Arrow button to enter the Cycle Display sub menu.
6. Press the Up or Down Arrow buttons to select On or Off.
7. Press the Select or Right Arrow button to store the new setting.

Note: The default setting is Cycle Display Off.

Scrolling

This option defines the way information is displayed. There are two modes available Scroll Display and Page Display. Scroll Display shows the information that extends beyond the available 16 characters on the display by scrolling the text from right to left. Page Display shows the current viewable text that will fit on the screen, and then replaces it with the missing text.

1. Press the Menu button to enter the Setup Menu.
2. Press the Up or Down Arrow buttons to navigate to Display Options.
3. Press the Select or Right Arrow button to enter the Display Options sub menu.
4. Press the Up or Down Arrow buttons to navigate to Scrolling.
5. Press the Select or Right Arrow button to enter the Scrolling sub menu.
6. Press the Up or Down Arrow button to select Scroll Display or Page Display.
7. Press the Select or Right Arrow button to store the new display setting

Clock Features

This menu option will allow access to all of the time based features available with the Sportscaster.

Alarm

This option powers the Sportscaster on at a preset time. The Alarm feature will only turn the Sportscaster on if the Sportscaster is currently powered off. Settings for the Alarm are permanently stored and still active after Sportscaster is powered off. When Alarm feature is enabled the Alarm indicator will be active on the display.

1. Press the Menu button to enter the Setup Menu.
2. Press the Up or Down Arrow buttons to navigate to Clock features.
3. Press the Select or Right Arrow button to enter the Clock features sub menu.
4. Press the Up or Down Arrow buttons to navigate to Alarm.
5. Press the Select or Right Arrow button to enter the Alarm screen
6. Press the Up or Down Arrow buttons to navigate to On/Off.
7. Press the Select or Right Arrow button to enter the Alarm On/Off sub menu.
8. Press the Up or Down Arrow button to navigate to Alarm On or Alarm off.
9. Press the Select or Right Arrow button to place the Alarm in the desired state.

Note: The default setting for the Alarm is off.

To set the Alarm Time first repeat steps 1-5.

6. Press the Up or Down Arrow buttons to navigate to Time.
7. Press the Select or Right Arrow button to enter the Alarm Time sub menu.
8. Press the Up or Down Arrow button to select the first hour digit.
9. Press the Right Arrow button to move to the next digit.
10. Continue steps 8-9 until the desired time is shown including AM or PM.
11. Press the Select button to set the Alarm time.

Sleep

This option powers the Sportscaster Off after a preset time has elapsed. You can use the Sportscaster normally and not interrupt the Sleep timer countdown. Sleep settings are not carried over after the Sportscaster is powered off. When Sleep mode is activated, the Sleep indicator will be visible on the display.

1. Press the Menu button to enter the Setup Menu.
2. Press the Up or Down Arrow buttons to navigate to Clock features.
3. Press the Select or Right Arrow button to enter the Clock features sub menu.
4. Press the Up or Down Arrow buttons to navigate to Sleep.
5. Press the Select or Right Arrow button to enter the Sleep setting screen.
6. Press the Up or Down Arrow buttons to select either Off, 15, 30, 45, 60.
7. Press the Select or Right Arrow button to enter the desired Sleep time.

Note: The default setting for the Sleep Timer is Off.

Auto Shutdown

This option powers off the Sportscaster after a 1-hour period of no user activity. After 59-minutes of inactivity, an Auto Shutdown notice appears. If the Select button is pressed, Auto Shutdown is cancelled.

1. Press the Menu button to enter the Setup Menu.
2. Press the Up or Down Arrow buttons to navigate to Clock features.
3. Press the Select or Right Arrow button to enter the Clock features sub menu.
4. Press the Up or Down Arrow buttons to navigate to Auto Shutdown.
5. Press the Select or Right Arrow button to enter the Auto Shutdown sub menu.
6. Press the Up or Down Arrow button to select Enable or Disable.
7. Press the Select or Right Arrow button to store the Auto Shutdown setting

Note: The default setting for Auto Shutdown is Off.

Format

This option selects either a 12-hour or 24-hour (military) time display format.

1. Press the Menu button to enter the Setup Menu.
2. Press the Up or Down Arrow buttons to navigate to Clock features.
3. Press the Select or Right Arrow button to enter the Clock features sub menu.
4. Press the Up or Down Arrow buttons to navigate to Format.
5. Press the Select or Right Arrow button to enter the Format sub menu.
6. Press the Up or Down Arrow button to select 12 Hour or 24 Hour.
7. Press the Select or Right Arrow button to store the desired Clock Format.

Note: The default setting for Format is 12 Hour time display.

Time Zone

This option allows you to select the appropriate time zone for your area.

1. Press the Menu button to enter the Setup Menu.
2. Press the Up or Down Arrow buttons to navigate to Clock features.
3. Press the Select or Right Arrow button to enter the Clock features sub menu.
4. Press the Up or Down Arrow buttons to navigate to Time Zone.
5. Press the Select or Right Arrow button to enter the Time Zone sub menu.
6. Press the Up or Down Arrow button until the appropriate Time Zone is shown.
7. Press the Select or Right Arrow button to store the desired Time Zone.

Note: Eastern (GMT-5:00) is the default setting

Daylight Savings

This option will enable the clock to automatically adjust when your time zone observes daylight savings time.

1. Press the Menu button to enter the Setup Menu.
2. Press the Up or Down Arrow buttons to navigate to Clock features.
3. Press the Select or Right Arrow button to enter the Clock features sub menu.
4. Press the Up or Down Arrow buttons to navigate to Daylight Savings.
5. Press the Select or Right Arrow button to enter the Daylight Savings sub menu.
6. Press the Up or Down Arrow button to select the correct daylight savings setting.
7. Press the Select or Right Arrow button to store the daylight savings setting.

Note: DST Observed is the default setting.

Defaults

This option is used to return the SportsCaster to the original "factory" settings. Resoring defaults resets all settings to the factory defaults.

1. Press the Menu button to enter the Setup Menu.
2. Press the Up or Down Arrow buttons to navigate to Defaults.
3. Press the Select or Right Arrow button to enter the Defaults sub menu.
4. Press the Select or Right Arrow button to enter the Restore Defaults selection screen.
5. Press the Left or Right Arrow button to Select Yes or No

Antenna Aiming

This option presents feedback indicating the strength of satellite and terrestrial signals. Use this screen to place your antenna in the optimal position to receive the XM broadcast.

1. Press the Menu button to enter the Setup Menu.
2. Press the Up or Down Arrow buttons to navigate to Antenna Aiming.
3. Press the Select or Right Arrow button to enter the signal strength indicator.

SAT. indicates satellite signal strength.

TERRA indicates terrestrial ground repeater signal strength.

Parental Block

This option allows the user to select channels or categories to block. Blocked channels or categories require a pass code to access. They will not appear in the channel list, but may be unblocked or tuned to directly (with the remote control). They remain in the unblocked state unless it is blocked again.

Block

Before blocking or unblocking a channel or category you must select a three-digit pass code. The first time you enter the Parental Block menu you will be prompted to set up your pass code.

1. Press the Menu button to enter the Setup Menu.
2. Press the Up or Down Arrow buttons to navigate to Parental Block.
3. Press the Select or Right Arrow button to enter the Parental Block sub menu.
4. Press the Up or Down Arrow buttons to navigate to Block.
5. Press the Select or Right Arrow button to enter the pass code entry screen.
6. Press the Up or Down Arrow buttons to select the first digit of your pass code.
7. Press the Right Arrow button to move to the next digit.
8. Repeat steps 6 and 7 until your desired pass code is visible on the display.
9. Press the Select button to enter the pass code.
10. Press the Up or Down Arrow buttons to navigate to the channel(s) or category(ies) you wish to Block.
11. Press the Select button to block the desired channel or category. The Sportscaster will return to the Parental Block submenu.

Channel navigation will begin at the channel that immediately follows the blocked channel or category if you wish to block further channels. The pass code will not need to be entered again.

Note: If the wrong code is entered you will be returned to the Parental Block submenu.

Note: Channels 0 and 1 may not be blocked.

Unblock

When Unblocked channel is selected, only the channels that have been previously blocked are available for selection. The pass code is required to unblock a channel or category.

1. Press the Menu button to enter the Setup Menu.
2. Press the Up or Down Arrow buttons to navigate to Parental Block.
3. Press the Select or Right Arrow button to enter the Parental Block sub menu.
4. Press the Up or Down Arrow buttons to navigate to UnBlock.
5. Press the Select or Right Arrow button to enter the pass code entry screen.
6. Press the Up or Down Arrow buttons to select the first digit of your pass code.
7. Press the Right Arrow button to move to the next digit.
8. Repeat steps 6 and 7 until your desired pass code is visible on the display.
9. Press the Select button to enter the pass code.
10. Press the Up or Down Arrow buttons to navigate to the channel(s) or category(ies) you wish to UnBlock.
11. Press the Select button to block the desired channel or category. The Sportscaster will return to the Parental UnBlock submenu.

Edit Code

This option allows the user to change the Sportscasters Parental Block pass code. It requires the user to enter the current pass code, a new pass code and then confirm the new pass code again.

1. Press the Menu button to enter the Setup Menu.
2. Press the Up or Down Arrow buttons to navigate to Parental Block.
3. Press the Select or Right Arrow button to enter the Parental Block sub menu.
4. Press the Up or Down Arrow buttons to navigate to Edit Code.
5. Press the Select or Right Arrow button to enter the pass code entry screen.
6. Press the Up or Down Arrow buttons to select the first digit of your current pass code.
7. Press the Right Arrow button to move to the next digit.
8. Repeat steps 6 and 7 until your current pass code is visible on the display.
9. Press the Select button to enter the current pass code.
10. Press the Up or Down Arrow buttons to select the first digit of your New Pass Code.
11. Press the Right Arrow button to move to the next digit.
12. Repeat steps 6 and 7 until your New Pass Code is visible on the display.
13. Press the Select button to enter the Confirm Pass Code screen.
14. Press the Up or Down Arrow buttons to confirm the first digit of your New Pass Code.
15. Press the Right Arrow button to move to the next digit.
16. Repeat steps 6 and 7 until your New Pass Code is visible on the display.
17. Press the Select button to enter the New Pass Code.

INITIALIZATION REQUIRED

When the sportscaster is powered on for the first time or is reinitialized, the receiver will start playing XM channel 1. You may only display the XM radio phone number, web address, and channels 0 (XM Radio ID) and 1 (XM Preview) during the initialization process.

ADVISORY MESSAGES

Antenna Not Detected

When the Sportscaster detects no antenna or the satellite signal is lost, the message "Check Antenna" will be displayed until the antenna is detected.

Loss of Signal

When the satellite signal is lost the message "No Signal" will be displayed until signal is recovered.

Channel Not in Service

If a tuned channel is not in service the display will show "Off Air".

Channel Not Available

If a channel is not available the display will show "Channel ---"

Program Data is Null

If information is not available for the display of Artist, Feature, Song Title or Program the display will show "---" (three hyphens) in the place of the missing data.

Warranty Information

One-Year Limited Warranty

This limited warranty sets forth all **Advanced Global Technology** responsibilities regarding your product. There are no other expressed or implied warranties from **Advanced Global Technology**.

Warranty Service Provided

If you purchased the product new from a retail vendor, **Advanced Global Technology** warrants the equipment against defects in material and workmanship for a period of one (1) year from the original date of purchase. This warranty is in lieu of all other express warranties. This warranty begins when you purchase the product and continues for one (1) year unless you sell or rent the unit, in which case the warranty stops.

Advanced Global Technology disclaims any implied warranty, including the warranty of merchantability and the warranty of fitness for a particular purpose, as of the date of one year from your original purchase of the product **Advanced Global Technology** assumes no responsibility for any special, incidental, or consequential damages.

This warranty gives you specific legal rights and you may have other rights which vary from state to state. Some states do not allow the exclusion or limitations of special, incidental, or consequential damages or limitations on how long a warranty lasts, so the above exclusion or limitation may not apply to you.

Warranty Service Not Provided

This warranty does not cover damage resulting from accident, misuse, abuse, improper installation or operation, lack of reasonable care, unauthorized modification, or the affixing of any attachment not provided by **Advanced Global Technology** with the equipment, and/or loss of parts. This warranty is voided in the event any unauthorized person opens, alters, or repairs the product.

All **Advanced Global Technology** equipment being returned for repair must be suitably packaged.

What to Do for Warranty Service

During the first thirty (30) days, a defective product is eligible for over-the-counter exchange at the retailer from whom it was purchased. After thirty (30) days, the defective product should be returned to the authorized service center. Please allow a minimum of 2-3 weeks for the return of your product. For the shipping address of the authorized service center, call one of the telephone numbers given below.

Your product will be repaired or replaced if examination by the service center determines the product is defective. Products received damaged as a result of shipping will require you to file a claim with the carrier prior to repair. A product received with missing parts or with damage due to abuse, inadequate packing or some other noncompliance with this limited warranty will be returned to you C.O.D., freight collect.

Note: A product received which was not made by Advanced Global Technology or which is not defective as determined by our test procedures will not be repaired and will be returned to you C.O.D., freight collect.

To Obtain Warranty Service

- Provide proof of the date of purchase within the package.
- Prepay all shipping costs to the authorized service center.
- Include a return shipping address within the package.

Please retain your sales receipt, the carton, the packing materials, and the printed material. The original carton is the best shipping container for the Product should you have to return it.

For your reference:

Model Number _____ XM Radio ID _____ Serial Number _____

Date of Purchase _____ Where Purchased _____

**Advanced Global Technology Customer Service Telephone Number:
1-877-SUPT-ACT (787-8248)**

Visit Us on the Web: www.advancedgt.com



Advanced Global Technology, LLC.

Advanced Global Technology, LLC
P.O. Box 2060
New York, NY 10156-2060
U.S.A.
Customer Service (1) 877.SUPT AGT

www.advancedgt.com

AGT, Sportscaster name and related logos are
trademarks of Advanced Global Technology, LLC.

XM name and related logos are trademarks of
XM Satellite Radio Inc.

♻️ Printed on Recycled Paper
©2006 Advanced Global Technology, LLC. All rights reserved.