

RADIO #: BRDPI\_P5\_95 LNA PCB #: BLNA\_P5\_139  
RCVR PCB #: BRCV\_P6\_83 ANTENNA #: 89\_23  
CTRL PCB #: BCTR\_P8\_163  
# OLD VERSION VOLUME BUTTON

P/N: 990216

3.7V LITHIUM ION BATTERY  
BATERÍA DE ION-LITIO DE 3,7 Vcc  
BATTERIE AU LITHIUM ION 3.7V



E237850

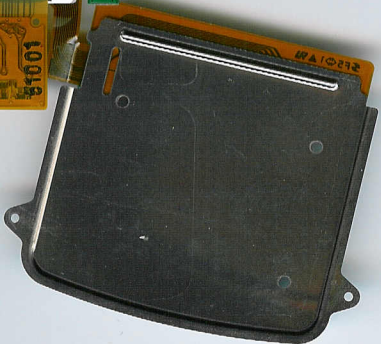
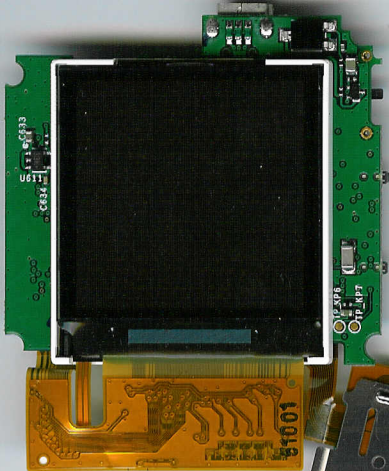


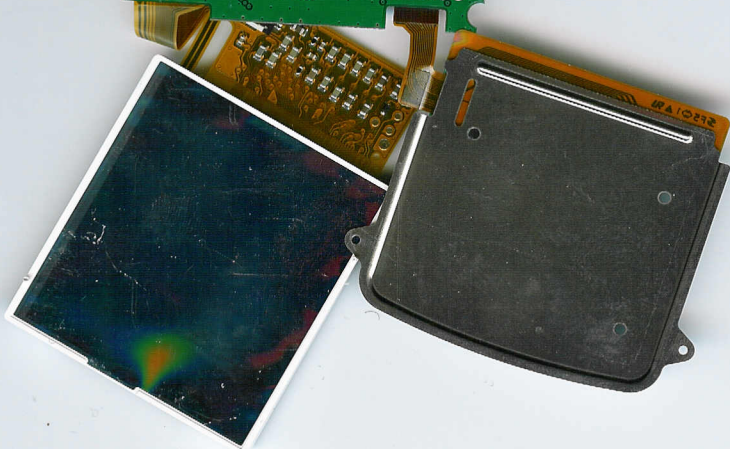
**CAUTION:** To Prevent Injury Do Not Disassemble, Crush, Puncture, or Dispose of in Fire or Water or Allow Metal To Touch Battery Terminals. See Manual for More Safety Information.

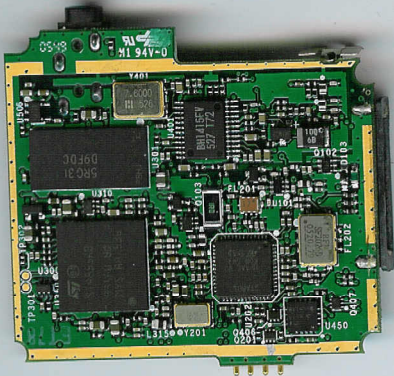
**PRECAUCION:** Para evitar accidentes, no desmonte, aplaste, perforo, incinere o sumerja en agua el producto, ni permita que los terminales de las baterías entren en contacto con superficies metálicas. Consulte la sección sobre seguridad del manual para más información.

**ATTENTION:** Afin d'éviter tout accident, ne pas démonter, écraser, perforer, incinérer ou immerger ni laisser les bornes de batterie entrer en contact avec le métal. Pour plus d'informations concernant la sécurité, consultez le manuel.

To remove, lift here and pull out







Pioneer

(((X)))

MCDE

▶||

DISP

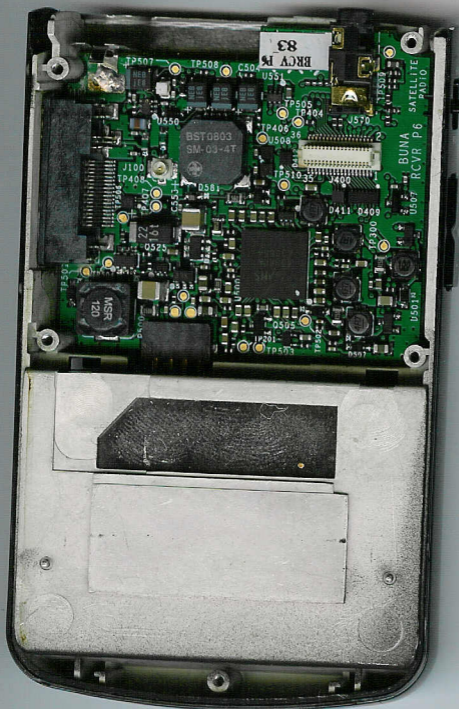
▲

◀

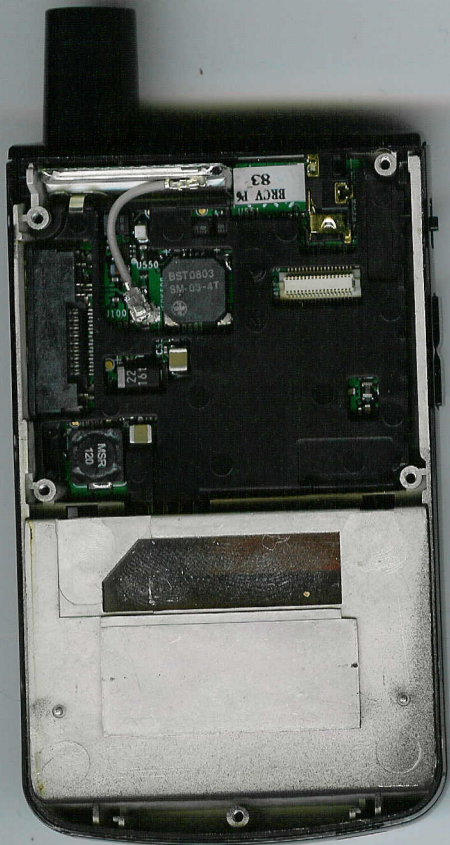
(((X)))

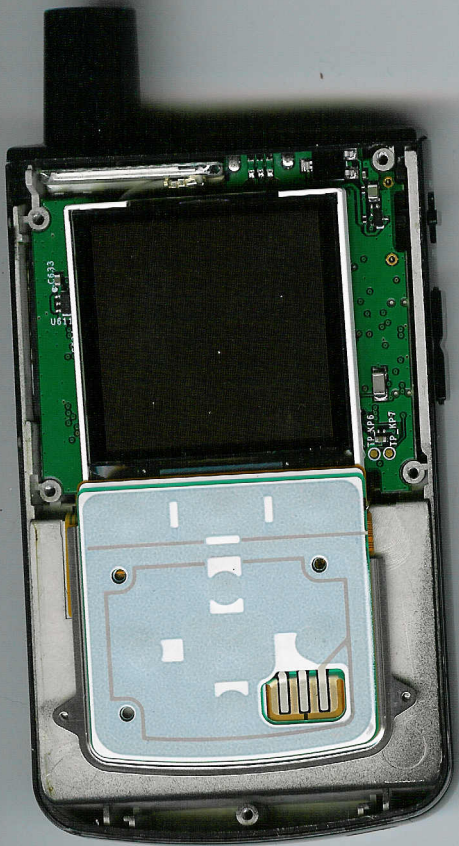
▶

▼











RADIO #: BRDPI\_P5 95 LNA PCB #: BLNA\_P5 139  
ACVR PCB #: BRCV\_P6 83 ANTENNA #: 89\_23  
CTRL PCB #: BCTR\_P6 163

\* OLD VERSION VOLUME BUTTON

RADIO #: BRDP1\_P5 95 LNA PCB #: BLNA\_P5 139  
RCVR PCB #: BRCV\_P6 83 ANTENNA #: 89\_23  
CTRL PCB #: BLTR\_P6 163

\* OLD VERSION VOLUME BUTTON

**Pioneer**

Model No:  
GEX-AIRWARE2/XMAUC

LC:34254-482

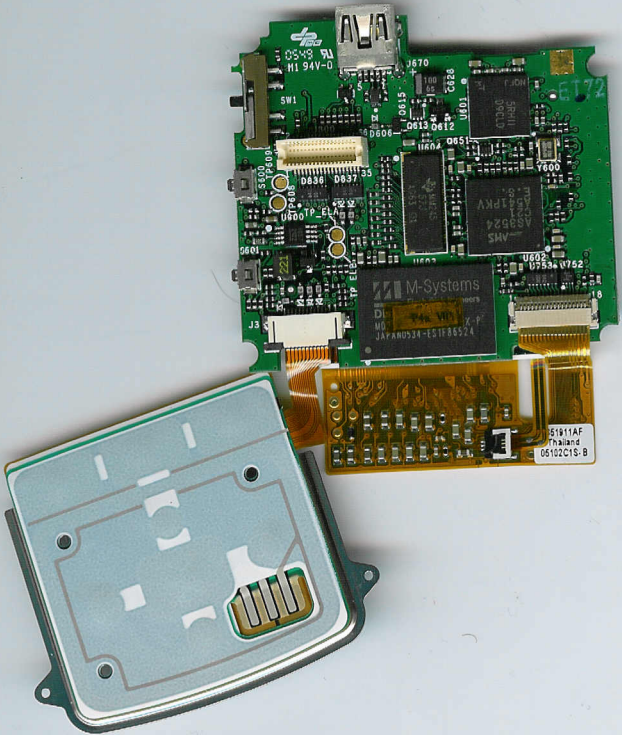
XM RADIO ID: 7U9BE0CR



To activate your XM Radio:  
[www.xmradio.com/activation](http://www.xmradio.com/activation)

Made in Malaysia

FCC ID: RS2GEXAIRWARE2  
IC ID: 5697A-GEXAIRWARE2



H1 94V-0

6T72

M-Systems

JAYAN053A-ES1F86524

AMS  
AS9824

51011AF  
Thailand  
06102C1S-B