



75" Wireless(ITB-011) Interactive Touch Board



Interactive Touch Board Installation and User Manual

Services

SUPPORT

BUTC Sales Department
 TEL : +886-2-2223 9889
 (Mon. ~ Fri. AM 8:30~PM05:30)
 FAX : +886-2-2223 8725
 Email :
 Web : www.beauty-up.com.tw

PRODUCT

Product Maintain : 2 Years
 Maintain ID : The Series Number
 Service :
 The product maintain by BUTC company.
 If there is any question, please call BUTC
 Sales Department for help.

Register

There is a “ Register Card “ within the
 IT-Board package-box. In order to
 provide you for best service, please
 sign and send it back to “Beauty Up Co.,
 Ltd.”

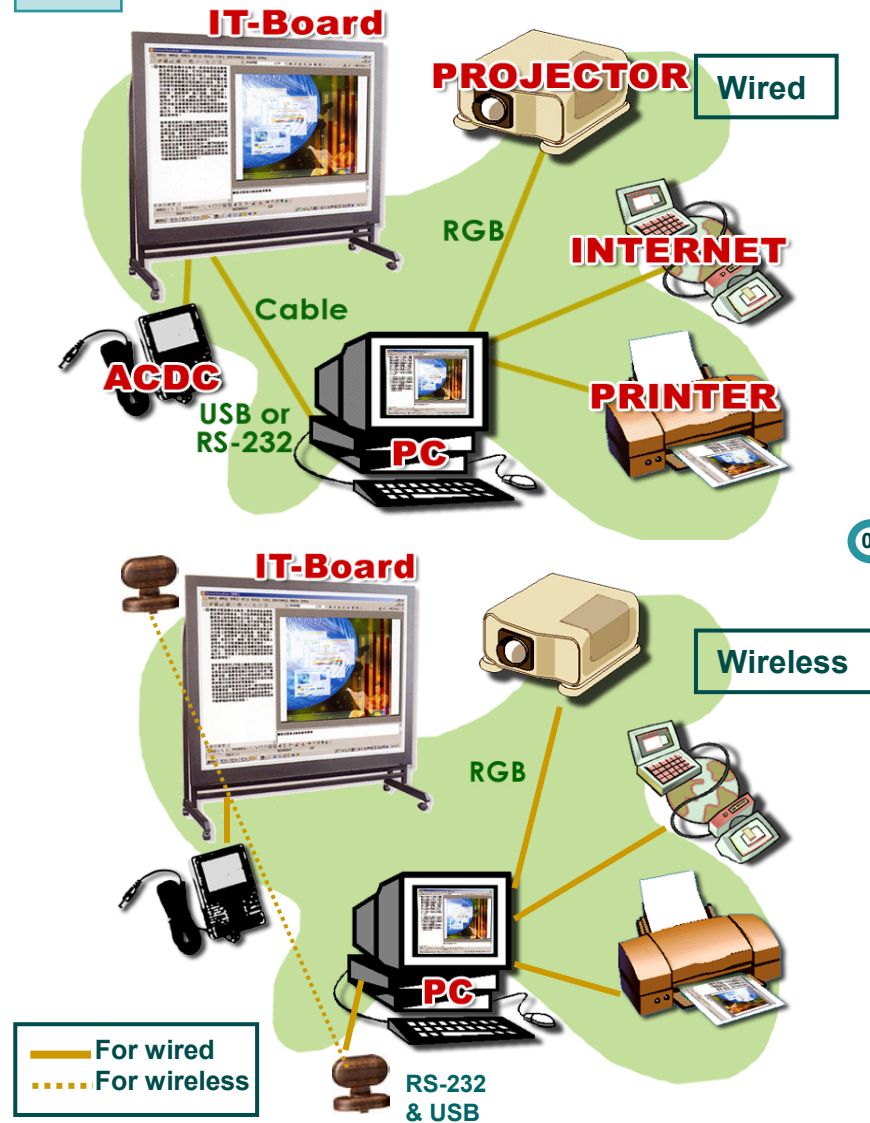
Table Of Contents

1. Safety Notes	1
2. Product Frame	2
3. Specification and System Environment	4
3.1 Board Specification	4
3.2 Tablet specification	5
3.3 Wireless Transceiver and Receiver specification	6
4. Wall Installation	7
5. Moveable Installation	13
6. Software Installation	18
7. Total Test Flow	21
8. Brief Introduction	23
9. Operations	24
9.1 Driver	24
9.2 The Annotate program	30
9.3 Handwriting recognition	39
9.3.1 How to start it	39
9.3.2 Handwriting recognition explained	39
9.3.3 System Setting	40
9.3.4 Invisible IME	44
9.3.5 Learning	45
9.3.7 New Fast Hand Explained	48
9.3.8 Sign Language	52
9.3.9 Uninstall	52
9.4 Onscreen Keyboard	53
10. Frequently Asked Questions	54
11. Appendix A: Accessories of (Wall Type)	55
12. Appendix B: Accessories of (Moveable Type)	56
13. Services	57

Safety Notes :

1. Read this safety notes before any attempt to install/operate the board..
2. Keep this instruction menu in a safe place for further reference.
3. Do not rip off, damage, over band, twist or over-stretch the power cable of serial cable, or use them to bind other objects, especially keep heavy objects away from the power cable in order to prevent danger or accidents.
4. Keep installation environment dry.
5. Keep cautious while moving the IT-Board.
6. Do not use powerful detergents or alcohol or thinners to clean the surface of the board.
7. Keep this board away form heat sources and magnified object.
8. Do not attempt to fix the board by yourself. In case of malfunction, call us for service instead.
9. Do not allow children play around the board or using sharp objects to damage the board.
10. Check wheel breaks are open before moving the board. And, do not move this board on the asphalt road if it is not necessary.
11. Make sure the replacement parts is recognized by the manufactures.
12. If store the board, please keep its front side face up.

Product Frame :



Specification and System Environment

Index :

1. Need to use with projector ◦
2. Using the Front-projection on the Board, then you can control as using 75 inches screen.
3. The product can be used in teaching / remote learning / Enterprise Intra-Meeting / Business Meeting / Net Meeting / training / discussion / Control center system / VOIP / entertainment / digitize house control system.
4. You should set up step by step as the manual.
5. Operation : (1)RS-232 Cable— To connect PC or Notebook with USB or RS-232 interface, and you can line, write, paint and use the Microsoft office to save, print and Email.
(2)Wireless— Using RF receiver and transfer to control IT-Board.

3.1

Board Specification

	Wired	Wireless
Body Size	1710W X 1355H X 40D (mm ±2%)	
Hanger Size	1170W X 64H X 23D (mm ±2%)	
Frame Size	1685W X 1640H X 600D (mm ±2%)	
Weight	Body 34Kg (±1Kg)+Pen Slot 1.5kg(±0.5Kg) Hanger 2.5Kg(±0.5Kg) Frame 25Kg (±1Kg) + hooks 2Kg(±0.5Kg)	
Sensing Area	1524W X 1143H (mm±0.5mm)	
Usage	IT Board and Projector Screen	
Material	Anti-Glare Polymer	
Data Transmission	Serial	RF/2.4G Hz (ISM Band) FSK transceiver
Resolution	500 LPI	Maximize resolution 1016LPI
Precision	+/-0.01"	
Gray Scale	512step (With Pen Brush function)	
Sense range	10mm	
Pen Slope	+/-45°	
Data Speed	120~240 Axis Per second	
Interface	RS-232 or USB Port	RF/2.4G Hz Wireless Receiver (RS-232 and USB)
Power Supply	AC120V(60Hz)/ DC 5V 300MA	Switching Adapter AC100- 200V(50-60Hz) 0.5A/DC-5V,2A-10W
RS232length	10M	
Temperature	-10° ~ 50°	
Humidity	0~95%	

3.2 Tablet specification

Body Size	235W X 225H X 21D (mm $\pm 2\%$)
Weight	include batteries 350g ($\pm 10\%$)
Sensing Area	155W X 125H (mm ± 0.5 mm)
Material	PVC
Data Transmission	RF/2.4G Hz (ISM Band) FSK transceiver
Resolution	Maximize resolution 4046LPI
Deliver distance	8~10M (see environmental)
Precision	+/-0.01"
Gray Scale	512step (With Pen Brush function)
Sense range	10mm
Pen Slope	+/-60°
Pen Slope	131 Axis Per second
PC	RF(2.4GHz) Wireless Receiver(RS-232 and USB)
Power	NO.4(AAA)battery x 4
Temperature	-10° ~ 50°
Humidity	0~95%



3.3 Wireless Transceiver and Receiver specification

Wireless Transceiver	
Transceiver Size	80W X 72.5H X 42D (mm $\pm 2\%$)
Weight	200g ($\pm 10\%$)
Data Transmission	RF/2.4G Hz (ISM Band) FSK transceiver
PC	RF(2.4GHz) Wireless Receiver(RS-232 and USB)
Power	Body afford power

Wireless Receiver	
Receiver Size	80W X 72.5H X 42D (mm $\pm 2\%$)
Weight	200g ($\pm 10\%$)
Data Transmission	RF/2.4G Hz (ISM Band) FSK transceiver
PC	RS-232 and USB
Power	USB Power

System Requirement :

OS : Windows98 、 ME 、 2000 、 XP
 Processor : Pentium III 800MHz or above
 HDD : 40MB free space or above
 PC : IBM PC/AT100% Compatible
 Memory : 128MB RAM or above
 Connector : RS-232 or USB

Wall Installation

Step1 : Accessories Check

	Yes	No
Product itself:		
Surface Damage or dirty		
Frame Misshape or damage		
Hanger is damage		
Pen Slot is damage		
Accessories : (Ref. To App. 1.)		
All screws are present		
Two L-Shape Bar		
RS-232 cable present		
Adaptor Present		
Two Long Pen/Stick		
Two Short Pen		
Wireless Transceiver		
Wireless Receiver		
CD-Rom Present		
Touch Tablet		

Contact us at once if any of these items are damage or missing.

Step2 : Determine/Measure the Install Position

Determination :

- 1.Nailed hanger on the skeleton of wooden wall.
- 2.Nailed hanger on anywhere of cement wall.

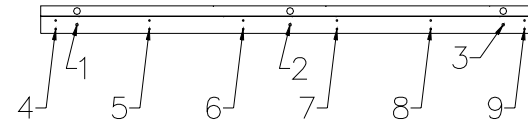
Measurement :

By utilize the floor, room beam, to measure the position of The board

Tools :

Tape Measure, ruler, level rulers for measuring purpose.

Step3 : Confirm the position and lock the screws



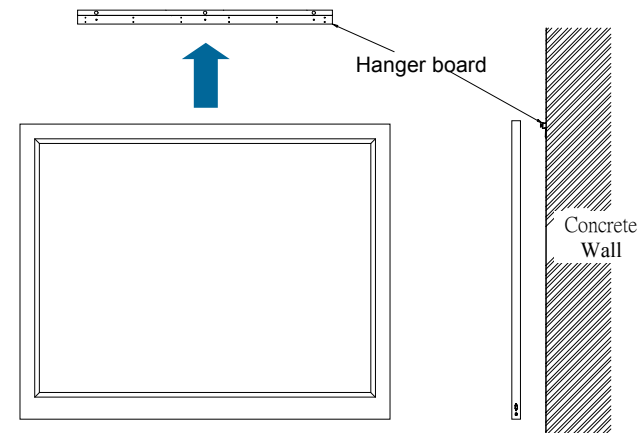
Make sure that the position of the hanger is correct by mark the screw hole position before fix it:

If you plan to hang the board on a concrete wall, use drill with cement screw and sleeve to drill these three positions. Then use cement screw to fix the position in 2.5"length.

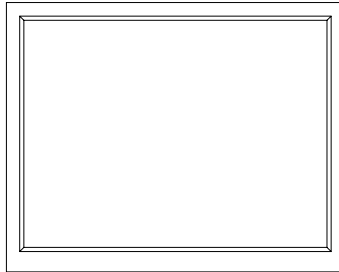
If it is on a wooden wall, fix the position 4, 5, 6, 7, 8, 9 with 1.25" length Iron screw.

In case of light cubical, fix as many possible position with 2" length Iron screw on the skeleton.

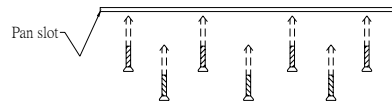
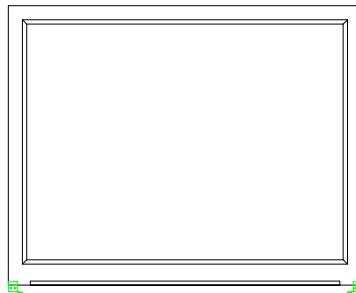
Step4 : Hang the Board



This step require 2 person to hold the bottom board, fix the holes on the hanger and then insert it in.

Step5 : Screw the Pen Slot

Place the pen slot
on the screw holes,
then fix the screws.

**Step6 : Lock the Asst. Fixed Board**

Choose the right
position which
support by
skeletons fix the
asst board

Asst Fixed Board

Step7 : Make sure that

Yes No

The hanger is fixed tightly
The board is not tilt or slope
Position is right
Pen slot is fixed

Step8 : Link the Board with Computer(Wired /Wireless)**Wired Transmission :**

- 1.Connect RS-232 cable between IT-Board and computer
(in Fig 1 and Fig 2)
- 2.Plug adaptor to the board (fig 3) Plug the projector signal
line to the computer (Fig 4)
- 3.Make sure that computer is LAN/Internet available.



Fig 1



Fig 2



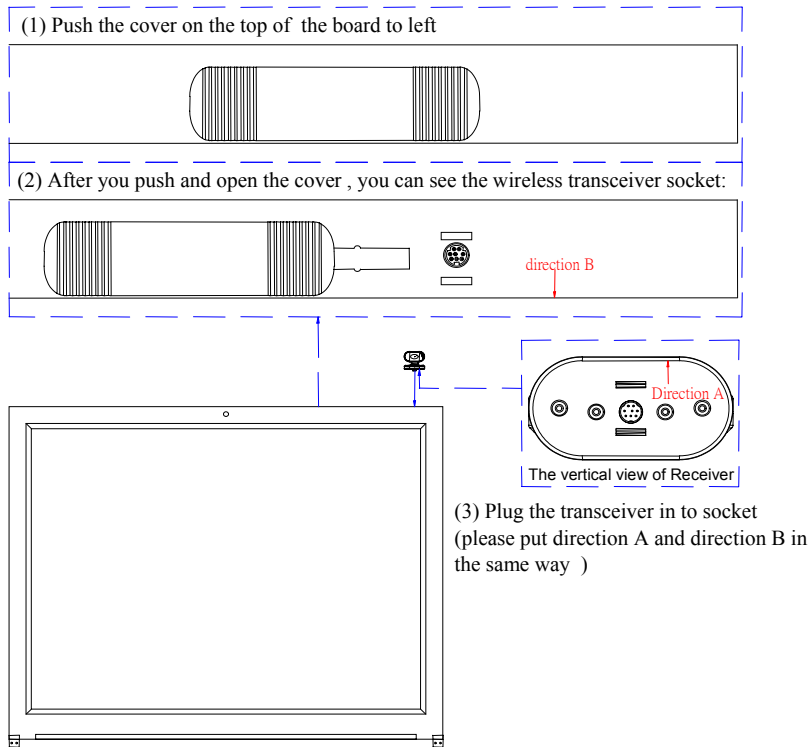
Fig 3



Fig 4

Wireless Transmission :

1.To connect the Receiver Step By Step



- To connect the RS-232 and USB to your PC.(Fig 1)
If you don't have the interface of RS-232, you can use the USB-switch.(Fig 2) °
- To connect the signal cable of the projector (Fig 3) °
- To check if Ethernet is ready, then you can use the Email on IT-Board.



Fig 1

USB
RS-232
VGA
RJ-45



Fig 2



Fig 3



Fig 4

Moveable Installation

Step1 : Accessories Check

Product itself:

- Surface Damage or dirty
- Frame Misshape or damage
- Hanger is damage
- Pen Slot is damage
- Stand is damage
- Wheels are present
- Connect bar is damage

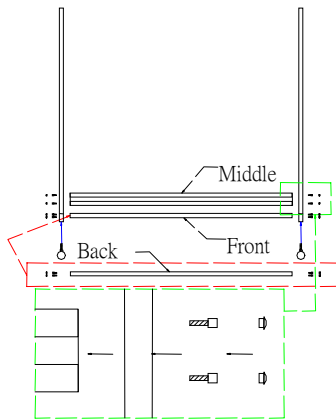
Yes No

Accessories : (Ref. To App. 1.)

- All screws, wheels are present
- RS-232 cable present
- Adaptor Present
- One Long Pen/Stick
- One Short Pen
- Wireless Transceiver
- Wireless Receiver
- CD-Rom Present
- Touch Tablet

Contact us at once if any of these items are damage or missing.

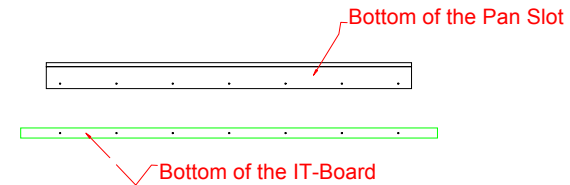
Step2 : Assemble the Moving Frame



Screw the wheels on both side of the frame by No. 14 wrench, then connect three connect bars with frame by using hex screwdriver.

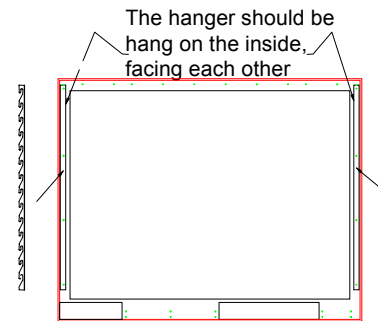
Cover the hole with plastic cover.

Step3 : Fixed the Pen Slot



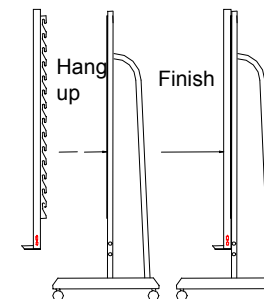
Let front side of IT Board face up, lock the pen stand on the bottom of the board, fixed the screws.

Step4 : Fix the Hooks



Let the IT-Board stand, close the hanger on rails located on the back side of the board, fix the position of the holes and lock it.

Step5 : Hang the Board on Moving Frame



Lift the board up, aim the first hook on the position you desire, hang it on the moving frame and hook it up.

The board must parallel with the frame.

Step6 : Make sure that

Yes No

Both sides of frame are loosening
Wheel rotation is correct
Hook and board are loose
Pen slot is loose

Step7 : Link the Board with Computer(Wired /Wireless)**Wired Transmission :**

- 1.Connect RS-232 cable between IT-Board and computer (in Fig 1 and Fig2), plug adaptor to the board (Fig 3)
- 2.Plug the projector signal line to the computer (Fig 4)
- 3.Make sure that computer is LAN/Internet available.

Moveable Installation

15



Fig 1

RS-232
VGA
RJ-45



Fig 2



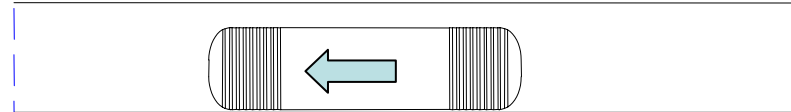
Fig 3



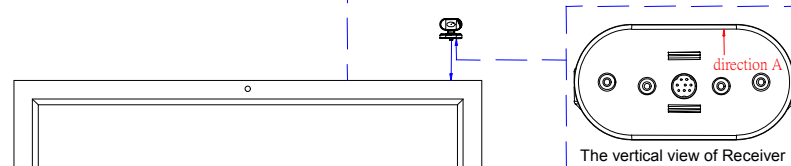
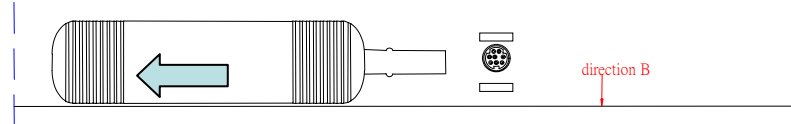
Fig 4

Wireless Transmission :**1.To connect the Receiver Step By Step**

(1) Push the cover on the top of the board to left



(2) After you push and open the cover , you can see the wireless transceiver socket



(3) Plug the transceiver in to socket
(please put direction A and direction B in the same way)

Moveable Installation

16

- To connect the RS-232 and USB to your PC.(Fig 1)
If you don't have the interface of RS-232, you can use the USB-switch.(Fig 2) °
- To connect the signal cable of the projector (Fig 3) °
- To check if Ethernet is ready, then you can use the Email on IT-Board.



Fig 1

USB
RS-232
VGA
RJ-45



Fig 2



Fig 3

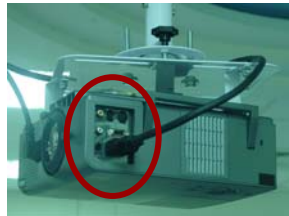


Fig 4



Screen appear like this while you insert the CD-ROM.

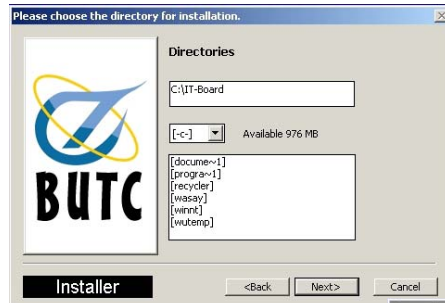
Choose appropriate language and OS version, then press "Go" to enter the installation screen.



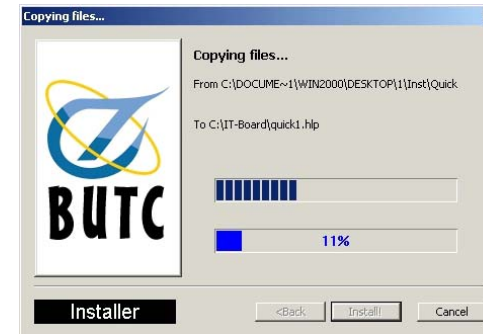
Press "Next >" to bypass the welcome screen

Press "Accept" if you accept the copyright claim here.





This is where you set up the install directory, press **"Next >"** step if you accept it, or change it yourself.

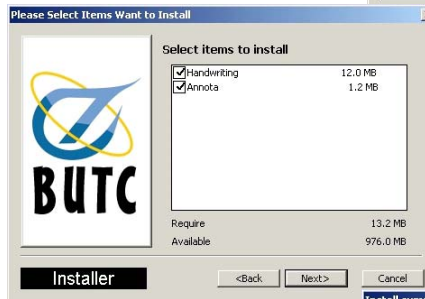


This screen will show you installation progress.

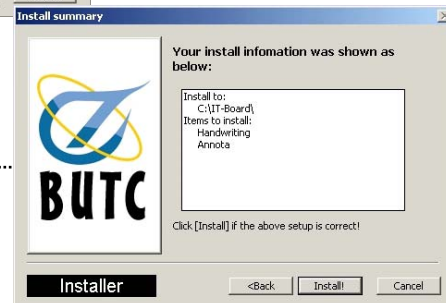
Since this is the first time you install, press **"Yes"** to continue



This is where you choose the applications of the board, press **"Next >"** to continue



Make sure that these is what you want to install, press **"Install"** to continue



This screen allow you to choose whether to restart computer or keep going on your other works, press **"Finish"** to complete.



After restart the computer, a new icon **"New Quick"** is appearing.

Total Test Flow

Wired examination:

- 1** Make sure that battery inserted and its location are correct.
- 2** After restart the computer, put pen on the board and see if the cursor is moving with the pen.
- Change pen battery
- NO**--- Make sure there is a stop sign appear above the driver icon, if use USB, please repeat again.
Yes--- Make sure that RS-232 cable have firmly plug into the Connector, then check adaptor is plugged. Click "Restart" from driver functions.
- If the stop sign is still appearing, call us for further maintenance
- 3** Click driver function with right click and choose "Calibration" to enter the project image fix function. Put pen top directly on the Middle of the cross, wait for 3~5 second, the next cross will appear. Four cross will appear one after another. After that, the Image will back to the Desktop. (ref. to p. 25)
- 4** Make sure that pen is alignment with the mouse cursor.
- NO**---Re-run the procedure, make sure that the pen top is on "EXACT" position at the middle of the cross.
- 5** Test the long pen (the Stick), Press the first button to see if it functioned as left button of mouse. Second button functioned as middle button of the mouse third button functioned as the right button of the mouse. (ref. to p. 24)
- 6** Test the short pen (the pen), click icon with pen top to see if it functioned as left button of mouse. First button functioned as right button of the mouse. Second button functioned as the middle button of the mouse. (ref. to p. 24)

Total Test Flow

21

Wireless examination:

- 1** Make sure that battery inserted and its location are correct.
- 2** To connect the RF Receiver with the PC, and turn on the power. (The RF Receiver is need to use the USB-interface. Some computers should be restarted after connect the USB-Transfer.)
- To Connector the Receiver and power supply with the IT-Board when you turn on the PC power.
- After Windows start working, to check the driver is working or not.
- (To check if the stop single show or not)
NO---Use the Touch-stick to move on the board, the signal of mouse should be moved.
Yes---To check the power supply, RF Receiver, Transfer connect or not. To check the driver of IT-Boards has been installed, then Restart the IT-Board Driver.
- If the stop sign is still appearing, call us for further maintenance
- 3** To make IT-Board and PC place at fixed position, and the longest distance is less 10 meter.
 Try the testing mode (To click the testing button of the Receiver)
Normal: The sign of mouse is moved smoothly.
Error: The mouse moving will be shaking. You may change the RF channel and operating distance to improve.
- 4** As STEP 3 to 6 (See page 25). To check IT-Board is working or not.
- 5** After assembling the batteries, let touch tablet be lay on the desk. After the light of LED turn off, moving your finger to close the touch tablet (Do not touch the face). The light of LED will be turn on automatically. It will be turn off after 11 seconds.
- 6** When using the interactive touch pen and touch tablet, testing distance less than 3 meters. If the LED light is bright but the touch tablet is not working, please restart the IT-Board driver first. Or call the Seller.
- If it's the first time to use IT-Board or using after removing, please testing with the cable to check IT-Board is working or not, then change the RF modules.

Total Test Flow

22

Brief Introduction

1...•Wired the IT Board

- 1.Plug adaptor into the board.
- 2.Wired RS-232 cable between (or Wireless Transceiver and Receiver) IT-Board and computer, if there are no available RS-232 port, use USB connector box. (ref.P.10 ~P.12 or P.15 ~P.17)
- 3.Plug VGA Signal line to the computer.

2...•Fix the Projector Image

Fix the image to the range of the IT-Board (75"), then fix the slope of the image and its quality. Please refer to the **projector** menu.

3...•Restart Computer, or Restart the Driver

Computer is off: If the computer was turn off after installation, turn on the computer so the program running automatically.

Computer is on: Click icon on the bottom of the right hand side, click the driver, and click "**Restart**" (ref. to p.25)

4...•Calibration

Click the driver icon to execute the "**Calibration**" to align pen (Stick) top with mouse cursor.

5...•Loading Personal Setting

Click the driver icon to execute the "**Setup**", following the instruction on page 26~28 to run personal setting. If the preset value is fine, refer to p.28 to save the setting with a name.

6...•Know Your Stick and Pen

Refer to p. 24.

P.S : Computer must have New Fast Hand and IT-Board Driver installed before you follow above instruction. If not, please refer to p.12 for software installation.

Operations

•...The E- Stick (Stick)



•... E-pen (Pen)

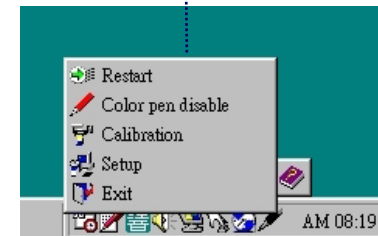


- third button = middle button of the mouse
- second button = right button of the mouse
- First button = Left button of the mouse
- Pen top = Left button of the mouse
- First button = right button of the mouse
- second button = middle button of the mouse

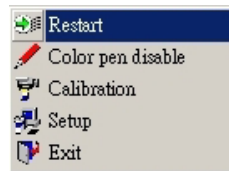
9.1

Driver

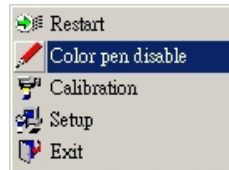
After installation, you are able to use personal setting and save it. Multiple setting is possible as long as different filename are used.



This icon indicate that the IT- Board driver is functioning. However, if it appear like this, the driver will not be functioning. When click, driver function list will appear.



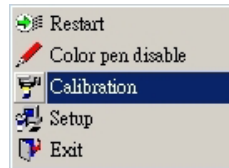
Restart : To restart the driver



Color pen enable

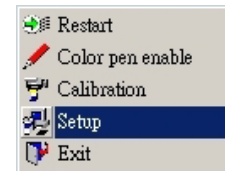
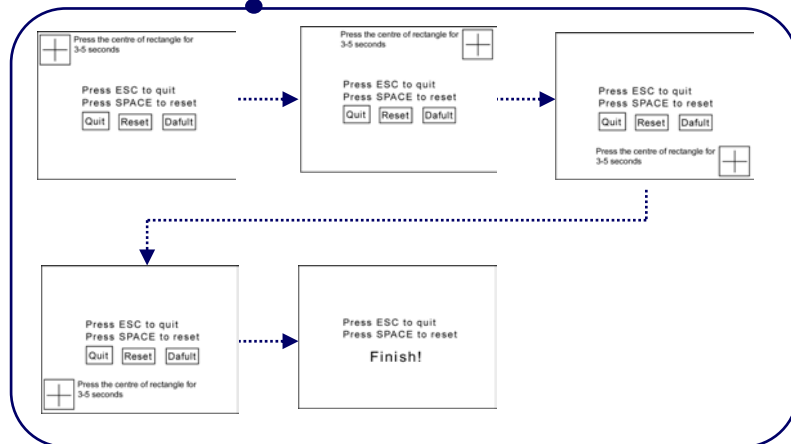
Color pen disable : Color pen enable
Color pen enable : Color pen disable

Change its status with just one click on this selection.



Calibration : Align cursor with Stick/Pen.

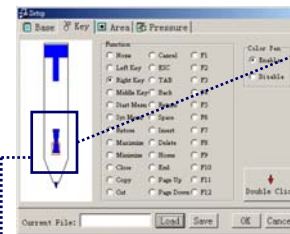
Click this selection, then put stick top (pen top) on the middle of each cross to complete the procedure. This must be done after the driver is installed. (ref. to p. 21)



Setup : This selection change the setting of the driver

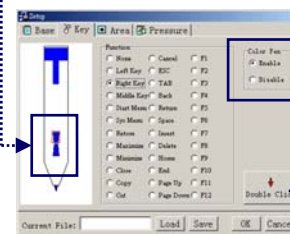


Base : Display IT-Board related information



Key : Personalize the buttons

Define functions of button 1 and 2. The preset value of button 1 is mouse right button, and button 2 is middle button of mouse. If you want to change it, put pen on the IT-Board and click the key you want to change, picture on the left will appear for you to change its function.



Color Pen : Status of Pen

Enable : ON
Disable : OFF

After

Double Click : this open your mouse setting.
You are able to modify your mouse setting faster.

