

BT-213 User Manual

● **Preface**

The Collex BT-213 is not only an ordinary Bluetooth headset, but also a Bluetooth Data Dongle connected to your PC or laptops. Through it, you can transfer photos and files between your Bluetooth mobile phones and the computers via the Bluetooth link. Moreover, you can also synchronize the phonebooks via wireless Bluetooth link with the BT-213. While connecting to the computer, the BT-213 also charges the battery automatically.

Bluetooth USB Dongle is a short distance Bluetooth wireless transmission device which uses USB interface. The transmission distance is around 10 meters in the ideal environment.

● **Package**

- ✓ Bluetooth Headset
- ✓ Charger
- ✓ USB Cable
- ✓ User manual
- ✓ CD-ROM

● **Headset Overview**

1. Charging / Dongle connector
2. Call handling button / Indicator light
3. Power / Pairing button
4. Volume up
5. Volume down
6. Ear hook
7. Speaker
8. Microphone

■ **Putting on the headset**

1. Make sure the ear hook leans against speaker.



2. Place the ear hook behind your ear.



3. Adjust the headset and make sure the microphone is pointing towards your mouth.



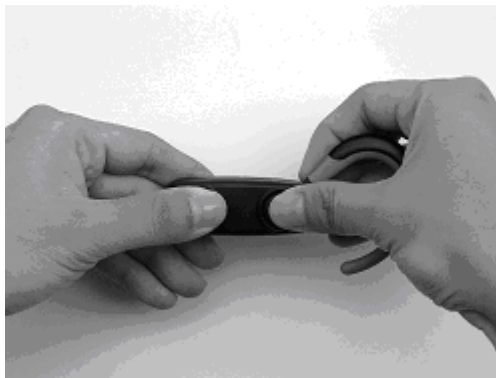
■ **Adjusting Ear Hook To Wear**

1. For your personal favorite, the BT-213 can be worn on the right or left ear.

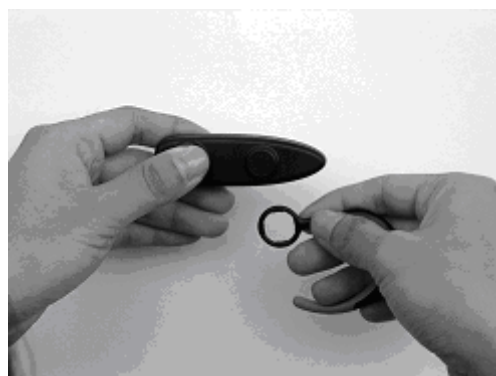
2. Taking off the ear hook gently. (use right ear as an example)
 - a. Make sure the ear hook is positioned as shown in the picture.



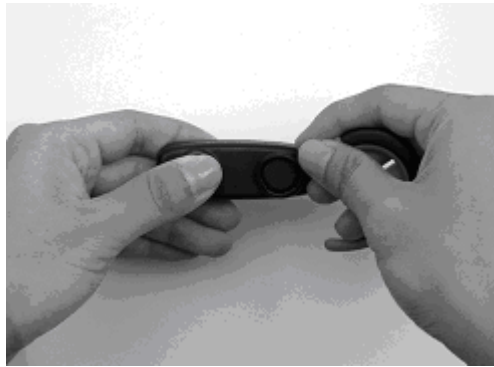
- b. Put your thumb on the circle which connects ear hook and headset.



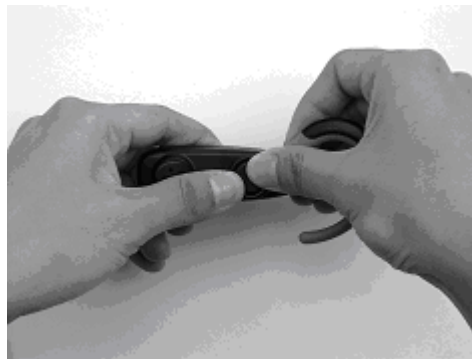
- c. Hold the headset firmly then pull the hear hook towards your face.



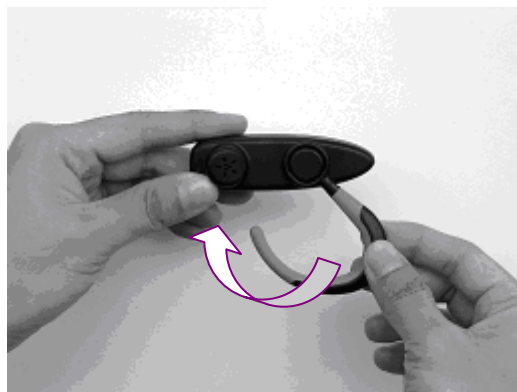
3. According which ear you want to wear then remount the ear hook to a direction desired.(use left ear as an example)
 - a. Put the ear hook on the connector as shown in the picture.



b. Press the ear hook back into the connector.



c. Adjust the ear hook to an appropriate position for wearing.



- **Charging**

1. We recommended that you charge the battery until the headset indicator light turns off before using the headset at the first time
2. The headset comes with a built-in rechargeable Li-ion battery. During charging, the indicator light shows a steady red light and turn off when the battery is fully charged. If indicator light shows a

flashing red light, you need to recharge the battery.

3. In order to make sure the battery is fully charged, if the indicator led shows a flashing green light with a steady red light when charging by USB cable or AC charger, please press power button to turn off the green light.
4. When you use AC Adapter to charge the battery, the headset and dongle functions are off.
5. When connected with PC as a Dongle, the battery is charged as well.

- **Getting Started**

Before you can use your BT-213, you must pair it with a device, for example, a Bluetooth mobile phone. Mobile and headset can communicate as they are turned on and within range of the phone up to 10 m (30 ft) outdoors or up to 5 m (15 ft) indoors with no solid objects in between.

- ✓ **Pairing**

1. Switching mobile phone into pairing mode, please refer to mobile user manual.
2. With the headset turned off, press and hold the power button up to 4 seconds until the indicator light on the headset flashes green and red. Then headset is in the pairing mode. If you want to cancel pairing, press call handling button once.
3. Following the mobile user manual, entering the headset PIN code: **1234**.
4. When pairing has been completed, the headset indicator light flashes green.

- ✓ **Turning on / off Headset**

1. To turn on headset, please press and hold the power button until you hear a short tone and the headset indicator light flashes green.
2. To turn off headset, please press and hold the power button until you hear a short tone and the headset indicator light flashes red then switches off.

- ✓ **Answering and Hang-up**



When ringing, you can use the call handling button or the talking button of mobile to pick up the call. If you pick up the call from mobile phone, you might need to chat by using mobile and you can't hear any voice from headset. If you want to terminate the call, you also can use the call handling button or the hang-up button of mobile phone.

✓ **Adjusting The Volume**

During taking, you can adjust the volume from the buttons of headset.

To increase the volume, press "+".

To decrease the volume, press "-".

Note: *For safety and comfortable reasons, we recommend that do not tune the volume to the maximum level.*

✓ **Using Voice Dialing**

Please make sure the phone and the headset are on and within range of each other. Press the call handling button about 1~2 seconds. During this time, you might hear a repeated tone in the headset. After the beep, voice dial as you normally would. In order to use voice dialing, you must make sure your mobile phone supports this function.

Note: *If you fail using the voice commands you have recorded through your phone, record them through the headset instead.*

✓ **Audio Transfer**

During a call, you can press the call handling button about 3~4 seconds to transfer the sound to mobile phone. If the headset is turned on after a call has been initiated or the sound is on the mobile phone, you can transfer the sound to the headset by pressing the call handling button once.

● **Using USB Dongle**

For using Dongle, you need to connect it with PC by USB cable and it shows a red indicator light, meanwhile it is also in charging mode. When

you want to turn on the Dongle, you need to press power button once then dongle starts to work and the indicator light shows a steady red light with a flashing green light. When you want to close dongle function, you also press power button once then the green light will switch off and indicator led just shows a steady red light. (If the battery is fully charged, the red light will turn off)

✓ Installing Bluetooth software

If you have connected the Bluetooth Dongle to your computer, please remove it, cancel any hardware wizard that may show up, and start here.

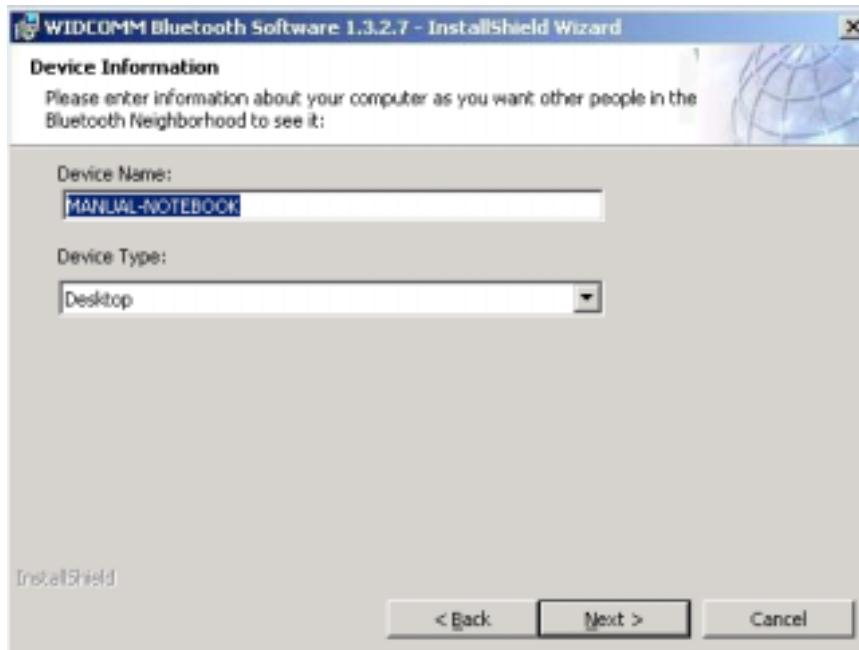
1. Close any open programs and insert the utility CD into your CD-ROM Drive. The Autorun function will automatically guide you to start the software installation. (If the Autorun function does not automatically start, please open the Installation CD to find the Setup.exe file and double click the Setup.exe icon to continue.)
2. The *Welcome* screen informs you that the *WIDCOMM Bluetooth Software Setup* program is ready to begin. Click on the **Next** button.



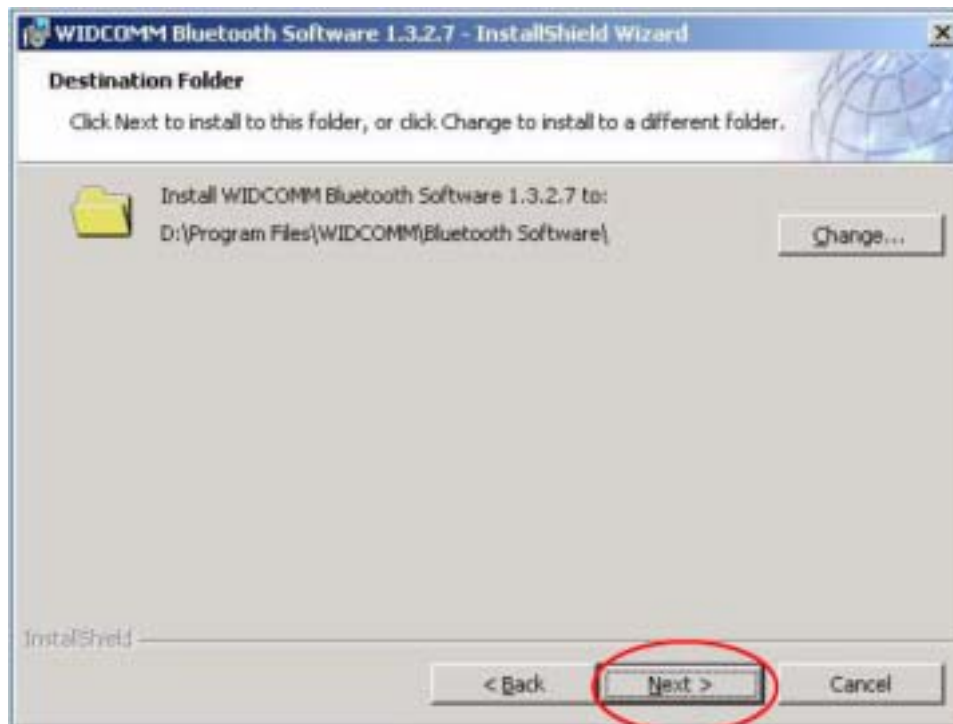
3. In the License Agreement screen, click on the radio button to the left of *I accept the terms in the license agreement*. Click on the **Next** button.



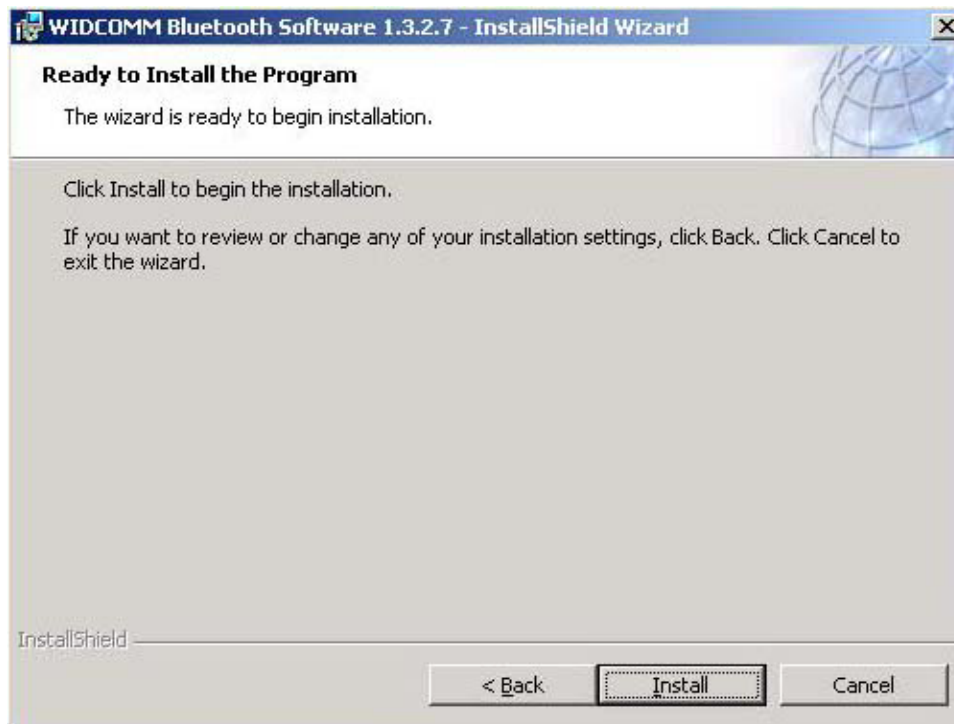
4. In the *Device Information* screen: (The screen won't be displayed if you re-installed the BTW software.)
 - a. Enter a device name
 - b. Select a device type
 - c. Click on the **Next** button.



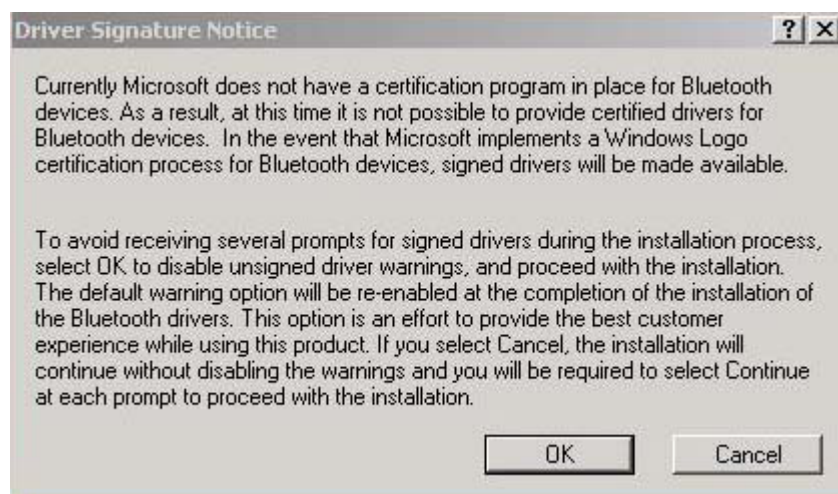
5. In the *Destination Folder* screen you are asked to confirm the *Destination Folder* for the application software. If you would like, you may change the destination folder to another location as the directory.



6. The *Ready to Install the Program* screen informs you that the driver is ready for installation. Click on the **Install** button to continue.

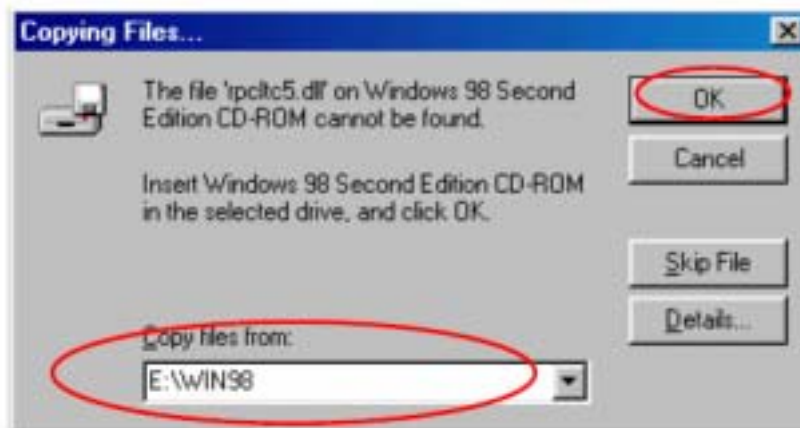


- a. *For Windows 2000 & XP users, please click on OK button from the following "Driver Signature Notice" dialog box to proceed with drive installation.*



- b. *Windows 98 Users, you will be asked to specify the*

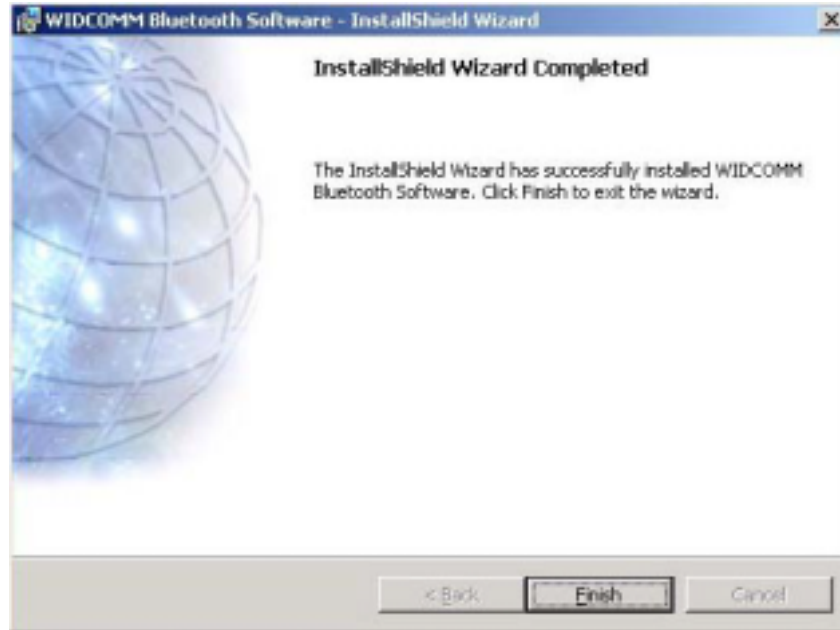
directory of Windows 98 source files path during installation. Please enter the location of the Windows98 setup files and follow the on-screen description.



7. Plug the Bluetooth Dongle to an available USB port firmly and click **OK** to continue with software installation.



8. When the files have been copied, you will be presented with a screen informing of its completion. Click on **Finish** button to finish the installation process.



9. Click on **Yes** button to reboot your PC.

✓ Bluetooth Icon

Enabled	Disabled	Connected
 Blue with White	 Blue with Red	 Blue with Green

For more detail information, please refer to the Widcomm User Guide in CD (UsrGuide.pdf)



Federal Communications Commission (FCC) Statement

15.21

You are cautioned that changes or modifications not expressly approved by the part responsible for compliance could void the user's authority to operate the equipment.

15.105(b)

This equipment has been tested and found to comply with the limits for a Class B digital device, pursuant to part 15 of the FCC rules. These limits are designed to provide reasonable protection against harmful interference in a residential installation. This equipment generates, uses and can radiate radio frequency energy and, if not installed and used in accordance with the instructions, may cause harmful interference to radio communications. However, there is no guarantee that interference will not occur in a particular installation. If this equipment does cause harmful interference to radio or television reception, which can be determined by turning the equipment off and on, the user is encouraged to try to correct the interference by one or more of the following measures:

- Reorient or relocate the receiving antenna.
- Increase the separation between the equipment and receiver.
 - Connect the equipment into an outlet on a circuit different from that to which the receiver is connected.
- Consult the dealer or an experienced radio/TV technician for help.

You are cautioned that changes or modifications not expressly approved by the party responsible for compliance could void your authority to operate the equipment.

FCC RF Radiation Exposure Statement:

This Transmitter must not be co-located or operating in conjunction with any other antenna or transmitter.