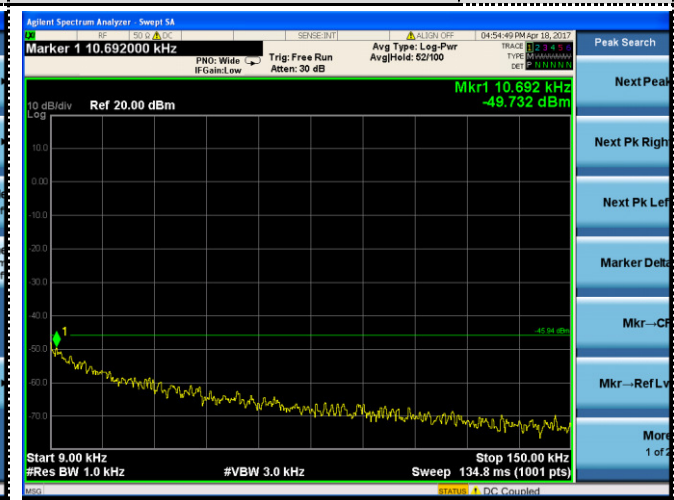




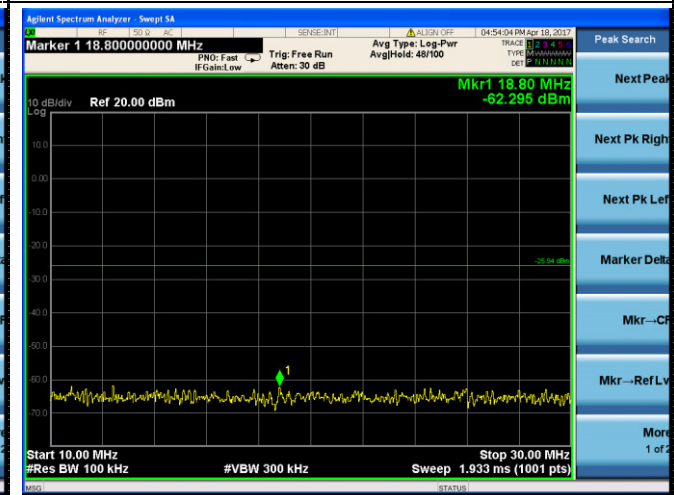
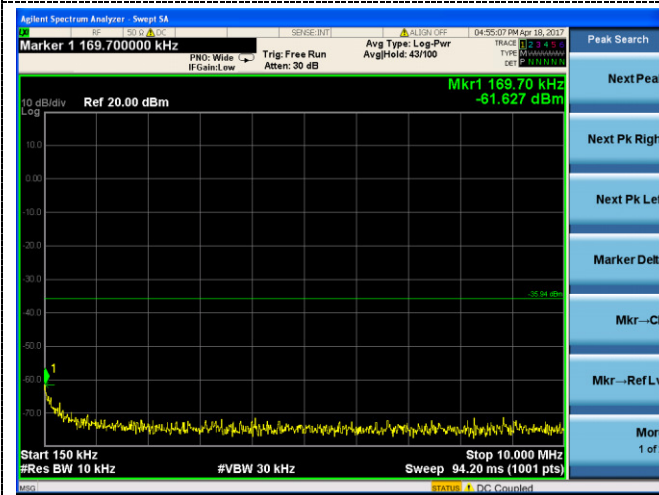


Test Mode: 802.11n HT40 Test channel : 03



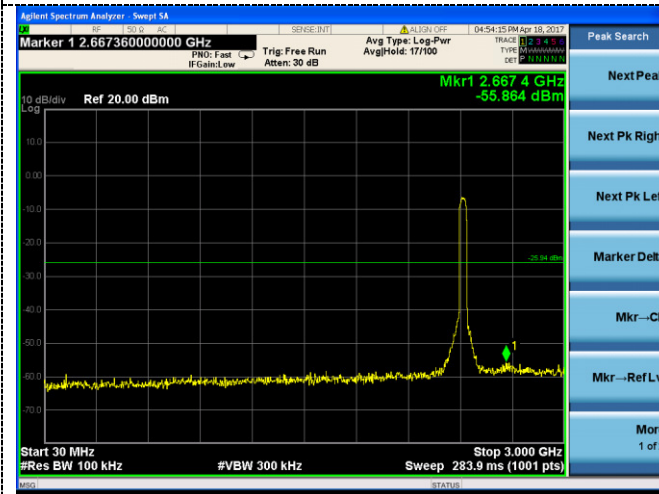
2412

9KHz~150KHz



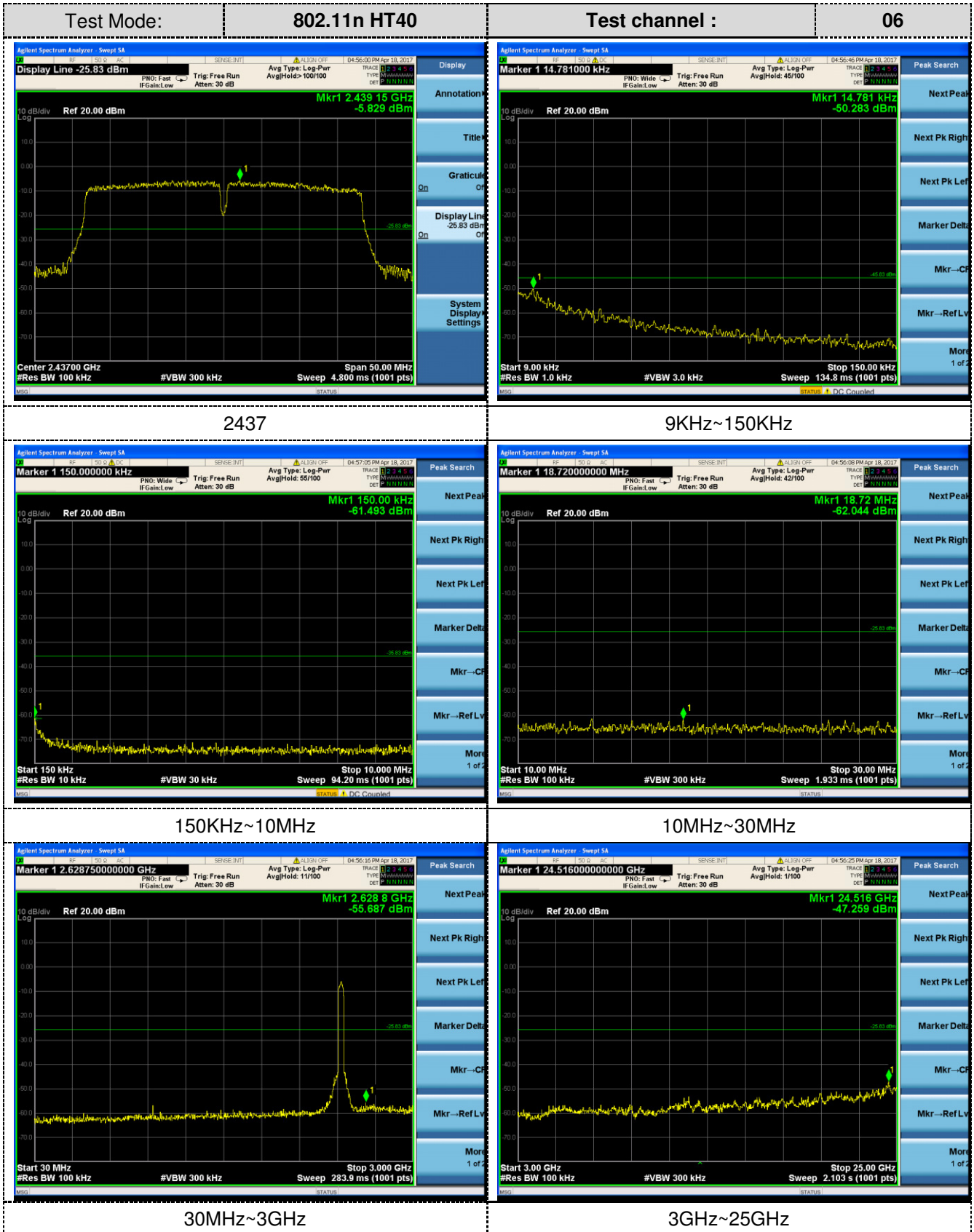
150KHz~10MHz

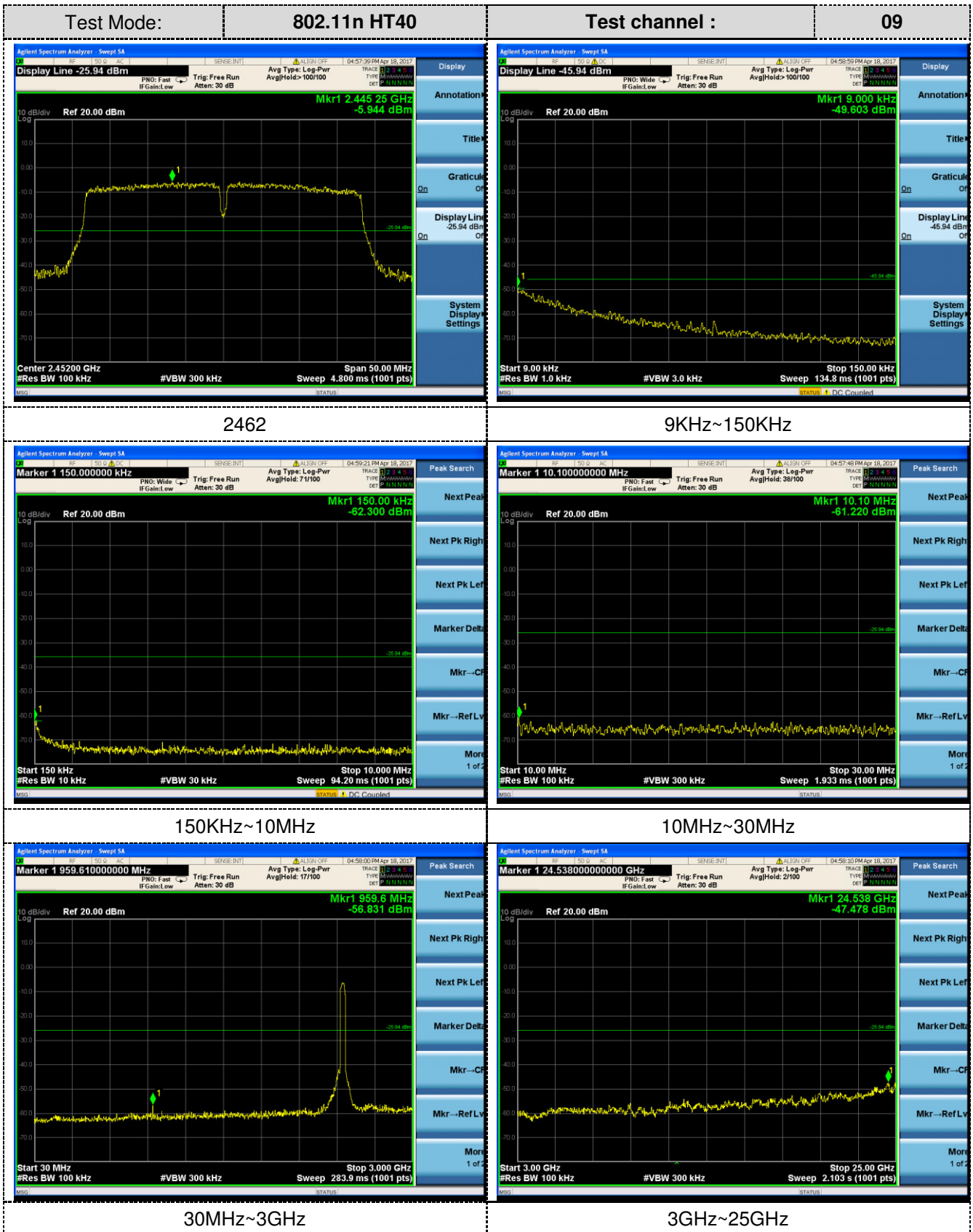
10MHz~30MHz



30MHz~3GHz

3GHz~25GHz





4.8. Antenna Requirement

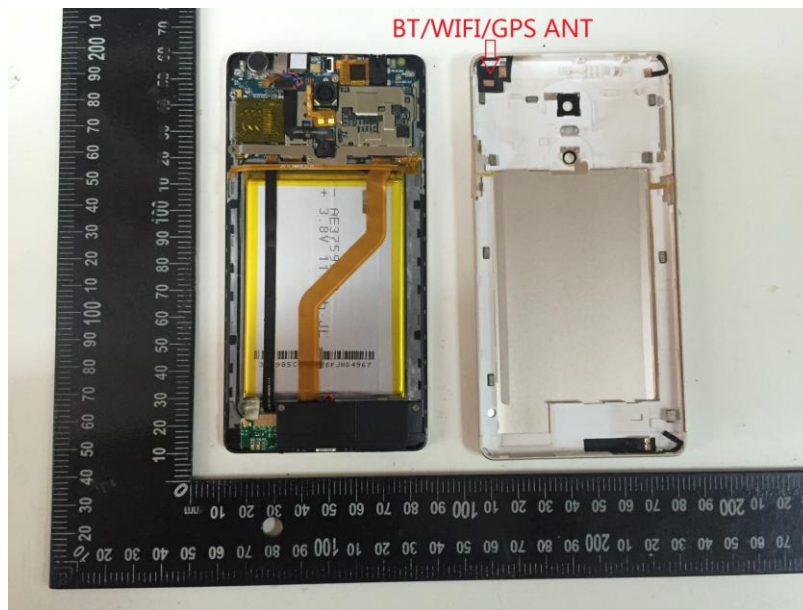
Standard Applicable

For intentional device, according to FCC 47 CFR Section 15.203, an intentional radiator shall be designed to ensure that no antenna other than that furnished by the responsible party shall be used with the device.

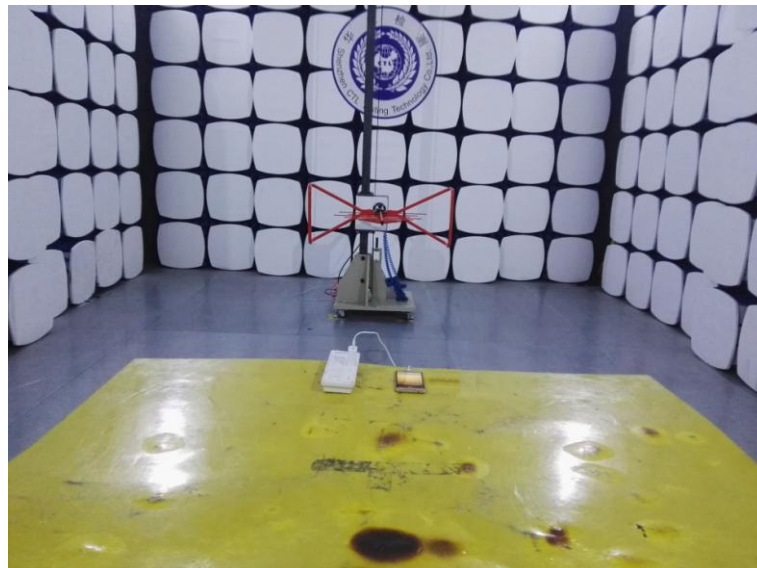
And according to FCC 47 CFR Section 15.247 (c), if transmitting antennas of directional gain greater than 6dBi are used, the power shall be reduced by the amount in dB that the directional gain of the antenna exceeds 6dBi.

Antenna Information

The antenna is FPC ANT, The directional gains of antenna used for transmitting is -0.50dBi.



5. Test Setup Photos of the EUT





6. External and Internal Photos of the EUT

Reference to the test report No. GTSR17042018-BLE

.....End of Report.....