

# FCC SAR TEST REPORT

Client Name : Hyundai Corporation

Address : 25,Yulgok-ro 2-Gil, Jongno-gu, Seoul, South Korea

Product Name : Smart phone

Date : Oct. 24, 2020

**Shenzhen Anbotek Compliance Laboratory Limited**

**Shenzhen Anbotek Compliance Laboratory Limited**

Address: 1/F, Building D, Sogood Science and Technology Park, Sanwei Community,  
Hangcheng Street, Bao'an District, Shenzhen, Guangdong, China.

Tel:(86)755-26066440 Fax:(86)755-26014772 Email:service@anbotek.com



Hotline

400-003-0500

www.anbotek.com

# Contents

1. Statement of Compliance .....	6
2. General Information.....	7
2.1. Client Information .....	7
2.2. Testing Laboratory Information .....	7
2.3. Description of Equipment Under Test (EUT).....	7
2.4. Device Category and SAR Limits .....	9
2.5. Applied Standard .....	9
2.6. Environment of Test Site.....	9
2.7. Test Configuration.....	9
3. Specific Absorption Rate (SAR) .....	10
3.1. Introduction.....	10
3.2. SAR Definition .....	10
4. SAR Measurement System .....	11
4.1. E-Field Probe.....	12
4.2. Data Acquisition Electronics (DAE).....	12
4.3. Robot.....	13
4.4. Measurement Server .....	14
4.5. Phantom .....	15
4.6. Device Holder.....	16
4.7. Data Storage and Evaluation.....	17
5. Test Equipment List.....	19
6. Tissue Simulating Liquids.....	20
7. System Verification Procedures .....	22
8. EUT Testing Position.....	24
8.1. Define two imaginary lines on the handset .....	24
8.2. Position for Cheek/Touch.....	25
8.3. Position for Ear / 15°Tilt.....	25
8.4. Body Worn Position .....	26
9. Measurement Procedures .....	27
9.1. Spatial Peak SAR Evaluation .....	27
9.2. Power Reference Measurement .....	28
9.3. Area Scan Procedures .....	28
9.4. Zoom Scan Procedures.....	29
9.5. Volume Scan Procedures .....	30
9.6. Power Drift Monitoring .....	30
10. Conducted Power.....	31
11. Antenna Location .....	38
12. SAR Test Results Summary.....	40
12.1. Head SAR Results.....	40

**Shenzhen Anbotek Compliance Laboratory Limited**

Address: 1/F, Building D, Sogood Science and Technology Park, Sanwei Community, Hangcheng Street, Bao'an District, Shenzhen, Guangdong, China.  
Tel: (86)755-26066440 Fax: (86)755-26014772 Email: service@anbotek.com

 Hotline  
400-003-0500  
www.anbotek.com

12.2. Body SAR Results.....	43
13. SAR Measurement Variability .....	46
14. Simultaneous Transmission Analysis .....	47
13.1. Simultaneous TX SAR Considerations .....	47
13.2. Evaluation of Simultaneous SAR.....	47
15. Measurement Uncertainty .....	49
Appendix A. EUT Photos and Test Setup Photos.....	50
Appendix B. Plots of SAR System Check .....	52
Appendix C. Plots of SAR Test Data.....	55
Appendix D. DASY System Calibration Certificate.....	65
Appendix E. Appendix E. Extended Calibration SAR Dipole.....	105

# TEST REPORT

Applicant : Hyundai Corporation  
Manufacturer : Shenzhen Tinno Mobile Technology Corp  
Product Name : Smart phone  
Model No. : E603  
Trade Mark : HYUNDAI  
Rating(s) : DC 3.85V from battery

**Test Standard(s) : IEEE 1528-2013; ANSI/IEEE C95.1:1992;  
FCC 47 CFR Part 2 (2.1093:2013)**

The device described above is tested by Shenzhen Anbotek Compliance Laboratory Limited to determine the maximum emission levels emanating from the device and the severe levels of the device can endure and its performance criterion. The measurement results are contained in this test report and Shenzhen Anbotek Compliance Laboratory Limited is assumed full of responsibility for the accuracy and completeness of these measurements. Also, this report shows that the EUT (Equipment Under Test) is technically compliant with the IEEE 1528-2013, ANSI/IEEE C95.1:1992 and FCC 47 CFR Part 2 (2.1093:2013) requirements.

This report applies to above tested sample only and shall not be reproduced in part without written approval of Shenzhen Anbotek Compliance Laboratory Limited.

Date of Receipt

Oct. 12, 2020

Date of Test

Oct. 12 ~ Oct. 20, 2020

Prepared By



*Bobby Wang*

(Engineer / Bobby Wang)

Reviewer

*Snowy Meng*

(Supervisor / Snowy Meng)

Approved & Authorized Signer

*Sally Zhang*

(Manager / Sally Zhang)

**Shenzhen Anbotek Compliance Laboratory Limited**

Address: 1/F, Building D, Sogood Science and Technology Park, Sanwei Community, Hangcheng Street, Bao'an District, Shenzhen, Guangdong, China.

Tel: (86)755-26066440 Fax: (86)755-26014772 Email: service@anbotek.com

Hotline  
400-003-0500  
www.anbotek.com

## Version

Version No.	Date	Description
01	2020-10-24	Original

**Shenzhen Anbotek Compliance Laboratory Limited**

Address: 1/F, Building D, Sogood Science and Technology Park, Sanwei Community, Hangcheng Street, Bao'an District, Shenzhen, Guangdong, China.  
Tel: (86)755-26066440 Fax: (86)755-26014772 Email: service@anbotek.com

 Hotline  
400-003-0500  
www.anbotek.com

# 1. Statement of Compliance

The maximum results of Specific Absorption Rate (SAR) found during testing are as follows.

## <Highest SAR Summary>

Frequency Band	Highest Reported 1g-SAR(W/Kg)			SAR Test Limit (W/Kg)
	Head	Hotspot	Body-Worn	
<b>GSM 850</b>	0.15	0.49	0.49	<b>1.6</b>
<b>PCS 1900</b>	0.03	0.78	0.78	
<b>WCDMA Band 2</b>	0.05	<b>1.04</b>	<b>1.04</b>	
<b>WCDMA Band 5</b>	0.55	0.55	0.55	
<b>WIFI 2.4G</b>	<b>0.86</b>	0.65	0.65	
<b>Simultaneous SAR</b>	<b>1.33</b>	<b>1.07</b>	<b>1.07</b>	
<b>Test Result</b>	<b>PASS</b>			

This device is in compliance with Specific Absorption Rate (SAR) for general population/uncontrolled exposure limits (1.6 W/kg) specified in FCC 47 CFR part 2 (2.1093) and ANSI/IEEE C95.1-19925, and had been tested in accordance with the measurement methods and procedures specified in IEEE 1528-2013.

Per KDB 941225 D06, a hotspot mode enabled device can provide wireless internet access to nearby Wi-Fi devices by routing the traffic through an available WWAN connection. For head SAR test, the EUT was set at voice call mode and at data transmitting mode (WWAN) for body SAR test. So the maximum Hotspot SAR are just the same with Body SAR.

## 2. General Information

### 2.1. Client Information

Applicant	:	Hyundai Corporation
Address	:	25,Yulgok-ro 2-Gil, Jongno-gu, Seoul, South Korea
Manufacturer	:	Shenzhen Tinn Mobile Technology Corp
Address	:	4/F.,H-3 Building,OCT Eastern Industrial Park. NO.1 XiangShan East Road.,Nan Shan District,Shenzhen,P.R.China

### 2.2. Testing Laboratory Information

Test Site:	:	Shenzhen Anbotek Compliance Laboratory Limited
Address:	:	1/F, Building D, Sogood Science and Technology Park, Sanwei community, Hangcheng Street, Bao'an District, Shenzhen, Guangdong, China.518102
FCC Designation Number	:	CN5023


### 2.3. Description of Equipment Under Test (EUT)

Product Name	:	Smart phone
Model No.	:	E603
Trade Mark	:	HYUNDAI
Testing sample ID :	:	18220WC00135801-1#
Test Power Supply	:	DC 3.85V Battery inside
Product Description	:	Operation Frequency: BR+EDR/BLE: 2402MHz~2480MHz 802.11b/ g/ n(HT20): 2412-2462MHz GSM/GPRS 850 TX:824.2~848.8 MHz; RX:869.2~893.8 MHz PCS/GPRS 1900 TX:1850.2~1909.8 MHz; RX:1930.2~1989.8 MHz UMTS-FDD Band 5

#### Shenzhen Anbotek Compliance Laboratory Limited

Address: 1/F, Building D, Sogood Science and Technology Park, Sanwei Community, Hangcheng Street, Bao'an District, Shenzhen, Guangdong, China.

Tel:(86)755-26066440 Fax:(86)755-26014772 Email:service@anbotek.com

 Hotline  
400-003-0500  
www.anbotek.com

		TX: 826.4 ~ 846.6 MHz; RX: 871.4 ~ 891.6 MHz UMTS-FDD Band 2 TX:1852.4~1907.6 MHz; RX: 1932.4~1987.6 MHz
	GPRS Class	8/10/12
	Modulation Type:	GSM/GPRS: GMSK WCDMA: BPSK, 16QAM; BDR+EDR: GFSK, $\pi/4$ -DQPSK, 8-DPSK BLE:GFSK 802.11b: CCK; 802.11g/n: OFDM
	Antenna Type:	GSM/GPRS: PIFA Antenna WCDMA: PIFA Antenna BLE: PIFA Antenna 802.11b/ g/ n(HT20/HT40): PIFA Antenna
<p><b>Remark:</b> 1) For a more detailed features description, please refer to the manufacturer's specifications or the User's Manual.</p>		



## 2. 4. Device Category and SAR Limits

This device belongs to portable device category because its radiating structure is allowed to be used within 20 centimeters of the body of the user. Limit for General Population/Uncontrolled exposure should be applied for this device, it is 1.6 W/kg as averaged over any 1 gram of tissue.

## 2. 5. Applied Standard

The Specific Absorption Rate (SAR) testing specification, method, and procedure for this device is in accordance with the following standards:

- IEEE 1528-2013
- FCC 47 CFR Part 2 (2.1093:2013)
- ANSI/IEEE C95.1:1992
- KDB 248227 D01
- KDB 447498 D01
- KDB 648474 D04
- KDB 865664 D01
- KDB 865664 D02
- KDB 941225 D01
- KDB 941225 D06

## 2. 6. Environment of Test Site

Items	Required	Actual
Temperature (°C)	18-25	22~23
Humidity (%RH)	30-70	55~65

## 2. 7. Test Configuration

The device was controlled by using a base station emulator. Communication between the device and the emulator was established by air link. The distance between the EUT and the antenna of the emulator is larger than 50 cm and the output power radiated from the emulator antenna is at least 30 dB smaller than the output power of EUT. The EUT was set from the emulator to radiate maximum output power during all tests. For WLAN SAR testing, WLAN engineering testing software installed on the EUT can provide continuous transmitting RF signal.

### 3. Specific Absorption Rate (SAR)

#### 3.1. Introduction

SAR is related to the rate at which energy is absorbed per unit mass in an object exposed to a radio field. The SAR distribution in a biological body is complicated and is usually carried out by experimental techniques or numerical modeling. The standard recommends limits for two tiers of groups, occupational/controlled and general population/uncontrolled, based on a person's awareness and ability to exercise control over his or her exposure. In general, occupational/controlled exposure limits are higher than the limits for general population/uncontrolled.

#### 3.2. SAR Definition

The SAR definition is the time derivative (rate) of the incremental energy (dW) absorbed by (dissipated in) an incremental mass (dm) contained in a volume element (dv) of a given density (ρ). The equation description is as below:

$$SAR = \frac{d}{dt} \left( \frac{dW}{dm} \right) = \frac{d}{dt} \left( \frac{dW}{\rho dv} \right)$$

SAR is expressed in units of Watts per kilogram (W/kg)

SAR measurement can be either related to the temperature elevation in tissue by

$$SAR = c \left( \frac{\delta T}{\delta t} \right)$$

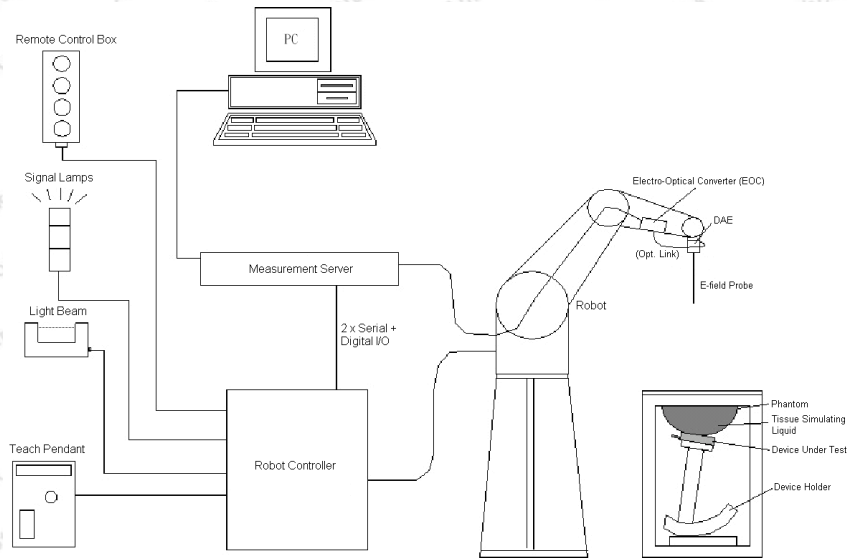
Where: C is the specific heat capacity, δT is the temperature rise and δt is the exposure duration, or related to the electrical field in the tissue by

$$SAR = \frac{\sigma |E|^2}{\rho}$$

Where: σ is the conductivity of the tissue, ρ is the mass density of the tissue and E is the RMS electrical field strength.

However for evaluating SAR of low power transmitter, electrical field measurement is typically applied.

## 4. SAR Measurement System



### DASy System Configurations

The DASy system for performance compliance tests is illustrated above graphically. This system consists of the following items:

- A standard high precision 6-axis robot with controller, a teach pendant and software
- A data acquisition electronic (DAE) attached to the robot arm extension
- A dosimetric probe equipped with an optical surface detector system
- The electro-optical converter (EOC) performs the conversion between optical and electrical signals
- A measurement server performs the time critical tasks such as signal filtering, control of the robot operation and fast movement interrupts.
- A probe alignment unit which improves the accuracy of the probe positioning
- A computer operating Windows XP
- DASy software
- Remove control with teach pendant and additional circuitry for robot safety such as warning lamps, etc.
- The SAM twin phantom
- A device holder
- Tissue simulating liquid
- Dipole for evaluating the proper functioning of the system

components are described in details in the following sub-sections.

#### Shenzhen Anbotek Compliance Laboratory Limited

Address: 1/F, Building D, Sogood Science and Technology Park, Sanwei Community, Hangcheng Street, Bao'an District, Shenzhen, Guangdong, China.


Tel: (86)755-26066440 Fax: (86)755-26014772 Email: service@anbotek.com

#### 4. 1. E-Field Probe

The SAR measurement is conducted with the dosimetric probe (manufactured by SPEAG). The probe is specially designed and calibrated for use in liquid with high permittivity. The dosimetric probe has special calibration in liquid at different frequency. This probe has a built in optical surface detection system to prevent from collision with phantom.

##### ➤ E-Field Probe Specification

###### <EX3DV4 Probe>

<b>Construction</b>	Symmetrical design with triangular core Built-in shielding against static charges PEEK enclosure material (resistant to organic solvents, e.g., DGBE)	 <p><b>Photo of EX3DV4</b></p>
<b>Frequency</b>	10 MHz to 6 GHz; Linearity: $\pm 0.2$ dB	
<b>Directivity</b>	$\pm 0.3$ dB in HSL (rotation around probe axis) $\pm 0.5$ dB in tissue material (rotation normal to probe axis)	
<b>Dynamic Range</b>	10 $\mu$ W/g to 100 mW/g; Linearity: $\pm 0.2$ dB (noise: typically $< 1$ $\mu$ W/g)	
<b>Dimensions</b>	Overall length: 330 mm (Tip: 20 mm) Tip diameter: 2.5 mm (Body: 12 mm) Typical distance from probe tip to dipole centers: 1 mm	

##### ➤ E-Field Probe Calibration

Each probe needs to be calibrated according to a dosimetric assessment procedure with accuracy better than  $\pm 10\%$ . The spherical isotropy shall be evaluated and within  $\pm 0.25$ dB. The sensitivity parameters (NormX, NormY, and NormZ), the diode compression parameter (DCP) and the conversion factor (ConvF) of the probe are tested. The calibration data can be referred to appendix C of this report.

#### 4. 2. Data Acquisition Electronics (DAE)

The data acquisition electronics (DAE) consists of a highly sensitive electrometer-grade preamplifier with auto-zeroing, a channel and gain-switching multiplexer, a fast 16 bit AD-converter and a command decoder and control logic unit. Transmission to the measurement server is accomplished through an optical downlink for data and status information as well as an optical uplink for commands and the clock.

The input impedance of the DAE is 200M $\Omega$ ; the inputs are symmetrical and floating. Common mode rejection is above 80dB.

##### Shenzhen Anbotek Compliance Laboratory Limited



**Photo of DAE**

### 4. 3. Robot

The SPEAG DASY system uses the high precision robots (DASY5: TX60XL) type from Stäubli SA (France). For the 6-axis controller system, the robot controller version (DASY5: CS8c) from Stäubli is used. The Stäubli robot series have many features that are important for our application:

- High precision (repeatability  $\pm 0.035$  mm)
- High reliability (industrial design)
- Jerk-free straight movements
- Low ELF interference (the closed metallic construction shields against motor control fields)



**Photo of DASY5**

#### 4. 4. Measurement Server

The measurement server is based on a PC/104 CPU board with CPU (DASY5: 400 MHz, Intel Celeron), chip disk (DASY5: 128 MB), RAM (DASY5: 128 MB). The necessary circuits for communication with the DAE electronic box, as well as the 16 bit AD converter system for optical detection and digital I/O interface are contained on the DASY I/O board, which is directly connected to the PC/104 bus of the CPU board.


The measurement server performs all the real-time data evaluation for field measurements and surface detection, controls robot movements and handles safety operations.



Photo of Server for DASY5

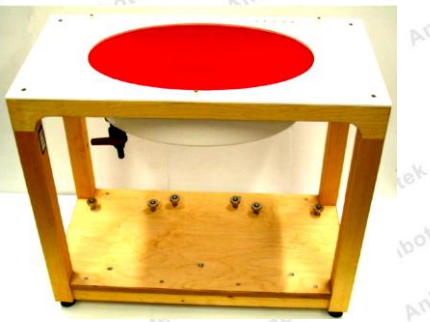
4. 5. Phantom

<SAM Twin Phantom>

<b>Shell Thickness</b>	2 ± 0.2 mm; Center ear point: 6 ± 0.2 mm	 <p><b>Photo of SAM Phantom</b></p>
<b>Filling Volume</b>	Approx. 25 liters	
<b>Dimensions</b>	Length: 1000 mm; Width: 500 mm; Height: adjustable feet	
<b>Measurement Areas</b>	Left Hand, Right Hand, Flat Phantom	

The bottom plate contains three pair of bolts for locking the device holder. The device holder positions are adjusted to the standard measurement positions in the three sections. A white cover is provided to tap the phantom during off-periods to prevent water evaporation and changes in the liquid parameters. On the phantom top, three reference markers are provided to identify the phantom position with respect to the robot.

<ELI4 Phantom>

<b>Shell Thickness</b>	2 ± 0.2 mm (sagging: <1%)	 <p><b>Photo of ELI4 Phantom</b></p>
<b>Filling Volume</b>	Approx. 30 liters	
<b>Dimensions</b>	Major ellipse axis: 600 mm Minor axis: 400 mm	

The ELI4 phantom is intended for compliance testing of handheld and body-mounted wireless devices in the frequency range of 30 MHz to 6 GHz. ELI4 is fully compatible with standard and all known tissue simulating liquids.

#### 4. 6. Device Holder

The SAR in the phantom is approximately inversely proportional to the square of the distance between the source and the liquid surface. For a source at 5 mm distance, a positioning uncertainty of  $\pm 0.5\text{mm}$  would produce a SAR uncertainty of  $\pm 20\%$ . Accurate device positioning is therefore crucial for accurate and repeatable measurements. The positions in which the devices must be measured are defined by the standards.

The DASY device holder is designed to cope with different positions given in the standard. It has two scales for the device rotation (with respect to the body axis) and the device inclination (with respect to the line between the ear reference points). The rotation center for both scales is the ear reference point (ERP). Thus the device needs no repositioning when changing the angles.

The DASY device holder is constructed of low-loss POM material having the following dielectric parameters: relative permittivity  $\epsilon = 3$  and loss tangent  $\delta = 0.02$ . The amount of dielectric material has been reduced in the closest vicinity of the device, since measurements have suggested that the influence of the clamp on the test results could thus be lowered.



**Device Holder**



#### 4.7. Data Storage and Evaluation

##### ➤ Data Storage

The DASY software stores the assessed data from the data acquisition electronics as raw data (in microvolt readings from the probe sensors), together with all the necessary software parameters for the data evaluation (probe calibration data, liquid parameters and device frequency and modulation data) in measurement files. The post-processing software evaluates the desired unit and format for output each time the data is visualized or exported. This allows verification of the complete software setup even after the measurement and allows correction of erroneous parameter settings. For example, if a measurement has been performed with an incorrect crest factor parameter in the device setup, the parameter can be corrected afterwards and the data can be reevaluated.

The measured data can be visualized or exported in different units or formats, depending on the selected probe type (e.g., [V/m], [A/m], [mW/g]). Some of these units are not available in certain situations or give meaningless results, e.g., a SAR-output in a non-lose media, will always be zero. Raw data can also be exported to perform the evaluation with other software packages.

##### ➤ Data Evaluation

The DASY post-processing software (SEMCAD) automatically executes the following procedures to calculate the field units from the microvolt readings at the probe connector. The parameters used in the evaluation are stored in the configuration modules of the software:

<b>Probe parameters:</b>	- Sensitivity	Norm <sub>i</sub> , a <sub>i0</sub> , a <sub>i1</sub> , a <sub>i2</sub>
	- Conversion factor	ConvF <sub>i</sub>
	- Diode compression point	dcp <sub>i</sub>
<b>Device parameters:</b>	- Frequency	f
	- Crest factor	cf
<b>Media parameters:</b>	- Conductivity	σ
	- Density	ρ

These parameters must be set correctly in the software. They can be found in the component documents or they can be imported into the software from the configuration files issued for the DASY components. In the direct measuring mode of the multi-meter option, the parameters of the actual system setup are used. In the scan visualization and export modes, the parameters stored in the corresponding document files are used.

The first step of the evaluation is a linearization of the filtered input signal to account for the compression characteristics of the detector diode. The compensation depends on the input signal, the diode type and the DC-transmission factor from the diode to the evaluation electronics. If the exciting field is pulsed, the crest factor of the signal must be known to correctly compensate for peak power.

The formula for each channel can be given as:

$$V_i = U_i + U_i^2 \cdot \frac{cf}{dcp_i}$$

with  $V_i$ = compensated signal of channel i, (i = x, y, z)

$U_i$  = input signal of channel i, (i = x, y, z)

cf = crest factor of exciting field (DASY parameter)

dcp<sub>i</sub> = diode compression point (DASY parameter)

From the compensated input signals, the primary field data for each channel can be evaluated:

$$\text{E-field Probes: } E_i = \sqrt{\frac{V_i}{\text{Norm}_i \cdot \text{ConvF}}}$$

$$\text{H-field Probes: } H_i = \sqrt{V_i \cdot \frac{a_{i0} + a_{i1}f + a_{i2}f^2}{f}}$$

with  $V_i$  = compensated signal of channel i, (i = x, y, z)

Norm<sub>i</sub>= sensor sensitivity of channel i, (i = x, y, z),  $\mu\text{V}/(\text{V}/\text{m})^2$  for E-field Probes

ConvF= sensitivity enhancement in solution

$a_{ij}$ = sensor sensitivity factors for H-field probes

f = carrier frequency [GHz]

$E_i$ = electric field strength of channel i in V/m

$H_i$ = magnetic field strength of channel i in A/m

The RSS value of the field components gives the total field strength (Hermitian magnitude):

$$E_{\text{tot}} = \sqrt{E_x^2 + E_y^2 + E_z^2}$$

The primary field data are used to calculate the derived field units.

$$\text{SAR} = E_{\text{tot}}^2 \cdot \frac{\sigma}{\rho \cdot 1000}$$

with SAR = local specific absorption rate in mW/g

$E_{\text{tot}}$ = total field strength in V/m

$\sigma$  = conductivity in [mho/m] or [Siemens/m]

$\rho$  = equivalent tissue density in g/cm<sup>3</sup>

Note that the density is set to 1, to account for actual head tissue density rather than the density of the tissue simulating liquid.

## 5. Test Equipment List

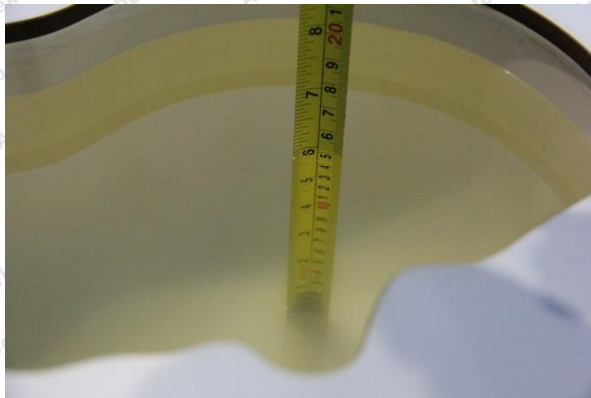
Manufacturer	Name of Equipment	Type/Model	Serial Number	Calibration	
				Last Cal.	Due Date
SPEAG	835MHz System Validation Kit	D835V2	4d154	Jun. 16,2018	Jun. 15,2021
SPEAG	1900MHz System Validation Kit	D1900V2	5d175	Jun. 15,2019	Jun. 14, 2022
SPEAG	2450MHz System Validation Kit	D2450V2	910	Jun. 15,2018	Jun. 14,2021
SPEAG	Data Acquisition Electronics	DAE4	387	Sep.06.2020	Sep.05.2020
SPEAG	Dosimetric E-Field Probe	EX3DV4	7396	May.06,2020	May.05,2021
Agilent	ENA Series Network Analyzer	E5071C	MY46317418	Nov.04,2019	Nov.03, 2020
SPEAG	DAK	DAK-3.5	1226	NCR	NCR
SPEAG	ELI Phantom	QDOVA004AA	2058	NCR	NCR
AR	Amplifier	ZHL-42W	QA1118004	NCR	NCR
Agilent	Power Meter	N1914A	MY50001102	Nov.04,2019	Nov.03, 2020
Agilent	Power Sensor	N8481H	MY51240001	Nov.04,2019	Nov.03, 2020
R&S	Spectrum Analyzer	N9020A	MY51170037	Nov.04,2019	Nov.03, 2020
Agilent	Signal Generation	N5182A	MY48180656	Nov.04,2019	Nov.03, 2020
Worken	Directional Coupler	0110A05601O-1 0	COM5BNW1A2	Nov.04,2019	Nov.03, 2020

### Note:

1. The calibration certificate of DASY can be referred to appendix C of this report.
2. The dipole calibration interval can be extended to 3 years with justification. The dipoles are also not physically damaged, or repaired during the interval.
3. The Insertion Loss calibration of Dual Directional Coupler and Attenuator were characterized via the network analyzer and compensated during system check.
4. The dielectric probe kit was calibrated via the network analyzer, with the specified procedure (calibrated in pure water) and calibration kit (standard) short circuit, before the dielectric measurement. The specific procedure and calibration kit are provided by Agilent.
5. In system check we need to monitor the level on the power meter, and adjust the power amplifier level to have precise power level to the dipole; the measured SAR will be normalized to 1W input power according to the ratio of 1W to the input power to the dipole. For system check, the calibration of the power amplifier is deemed not critically required for correct measurement; the power meter is critical and we do have calibration for it

## 6. Tissue Simulating Liquids

For the measurement of the field distribution inside the SAM phantom with DASY, the phantom must be filled with around 25 liters of homogeneous body tissue simulating liquid. For head SAR testing, the liquid height from the ear reference point (ERP) of the phantom to the liquid top surface is larger than 15 cm, which is shown in Fig. 6.1. For body SAR testing, the liquid height from the center of the flat phantom to the liquid top surface is larger than 15 cm, which is shown as followed:



Liquid depth in the Head Phantom (835MHz)



Liquid depth in the Head Phantom (1900MHz)



Liquid depth in the Head Phantom (2450MHz)

The following table gives the recipes for tissue simulating liquid.

Frequency (MHz)	Water (%)	Sugar (%)	Cellulose (%)	Salt (%)	Preventol (%)	DGBE (%)	Conductivity ( $\sigma$ )	Permittivity ( $\epsilon_r$ )
<b>For Head</b>								
900	40.3	57.9	0.2	1.4	0.2	0	0.97	41.5
1750	55.2	0	0	0.3	0	44.5	1.37	40.1
1800,1900,2000	55.2	0	0	0.3	0	44.5	1.40	40.0
2450	55.0	0	0	0	0	45.0	1.80	39.2
2600	54.8	0	0	0.1	0	45.1	1.96	39.0

The following table shows the measuring results for simulating liquid.

Tissue Type	Measured Frequency (MHz)	Target Tissue		Measured Tissue				Liquid Temp.	Test Data
		$\epsilon_r$	$\sigma$	$\epsilon_r$	Dev. (%)	$\sigma$	Dev. (%)		
835HSL	835	41.5	0.90	40.66	-2.02	0.915	1.67	22.3	10/12/2020
1900HSL	1900	40.0	1.40	39.09	-2.27	1.414	1.00	22.2	10/18/2020
2450HSL	2450	39.2	1.80	38.41	-2.02	1.833	1.83	22.4	10/20/2020

## 7. System Verification Procedures

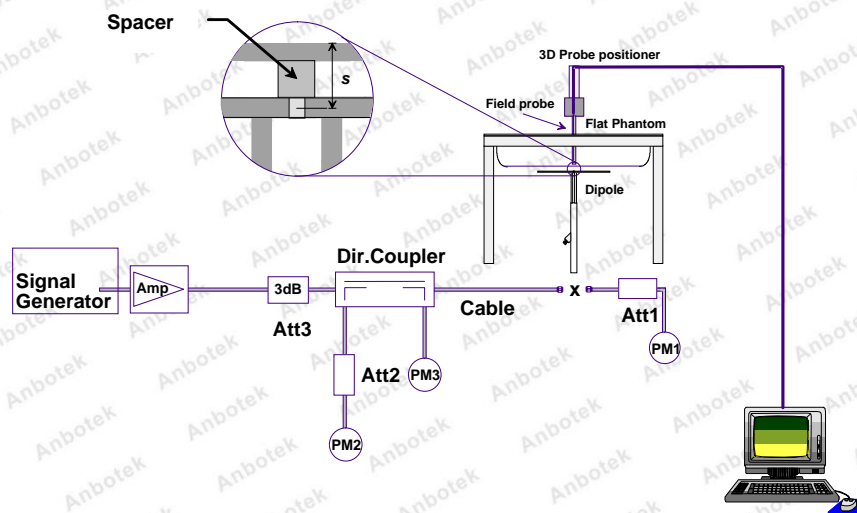
Each DASY system is equipped with one or more system validation kits. These units, together with the predefined measurement procedures within the DASY software, enable the user to conduct the system performance check and system validation. System validation kit includes a dipole, tripod holder to fix it underneath the flat phantom and a corresponding distance holder.

### ➤ Purpose of System Performance check

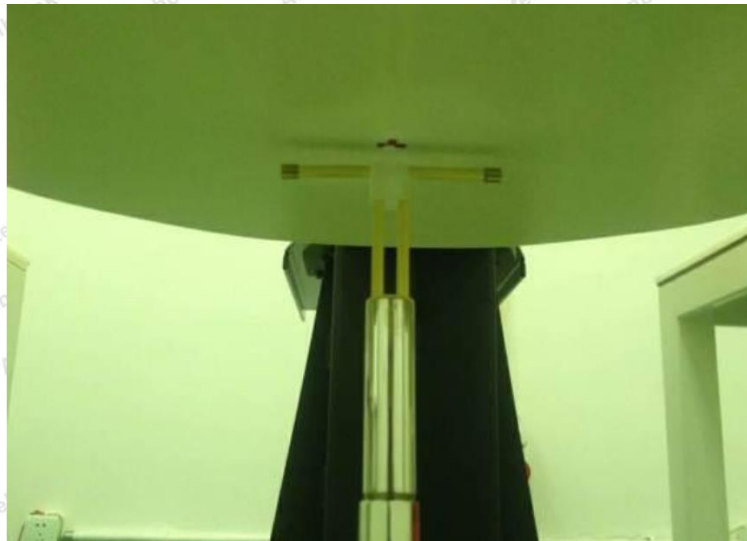
The system performance check verifies that the system operates within its specifications. System and operator errors can be detected and corrected. It is recommended that the system performance check be performed prior to any usage of the system in order to guarantee reproducible results. The system performance check uses normal SAR measurements in a simplified setup with a well characterized source. This setup was selected to give a high sensitivity to all parameters that might fail or vary over time. The system check does not intend to replace the calibration of the components, but indicates situations where the system uncertainty is exceeded due to drift or failure.

### ➤ System Setup

In the simplified setup for system evaluation, the EUT is replaced by a calibrated dipole and the power source is replaced by a continuous wave that comes from a signal generator. The calibrated dipole must be placed beneath the flat phantom section of the SAM twin phantom with the correct distance holder. The distance holder should touch the phantom surface with a light pressure at the reference marking and be oriented parallel to the long side of the phantom. The equipment setup is shown below:



**System Setup for System Evaluation**



**Photo of Dipole Setup**

➤ **Validation Results**

Comparing to the original SAR value provided by SPEAG, the verification data should be within its specification of 10%. The table below shows the target SAR and measured SAR after normalized to 1W input power. It indicates that the system performance check can meet the variation criterion and the plots can be referred to Appendix A of this report.

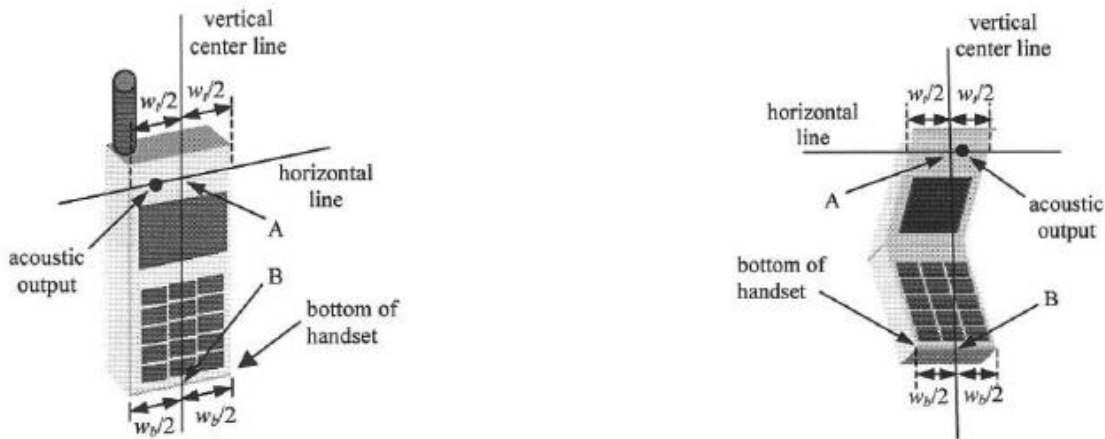
Frequency (MHz)	Liquid Type	Power fed onto reference dipole (mW)	Targeted SAR (W/kg)	Measured SAR (W/kg)	Normalized SAR (W/kg)	Deviation (%)	Date
835	Head	250	9.24	2.51	10.04	8.66	10/12/2020
1900	Head	250	40.4	9.67	38.68	-4.26	10/18/2020
2450	Head	250	52.4	13.5	54	3.05	10/20/2020

**Target and Measurement SAR after Normalized**

## 8. EUT Testing Position

### 8.1. Define two imaginary lines on the handset

- The vertical centerline passes through two points on the front side of the handset - the midpoint of the width  $w_t$  of the handset at the level of the acoustic output, and the midpoint of the width  $w_b$  of the bottom of the handset.
- The horizontal line is perpendicular to the vertical centerline and passes through the center of the acoustic output. The horizontal line is also tangential to the face of the handset at point A.
- The two lines intersect at point A. Note that for many handsets, point A coincides with the center of the acoustic output; however, the acoustic output may be located elsewhere on the horizontal line. Also note that the vertical centerline is not necessarily parallel to the front face of the handset, especially for clamshell handsets, handsets with flip covers, and other irregularly shaped handsets.

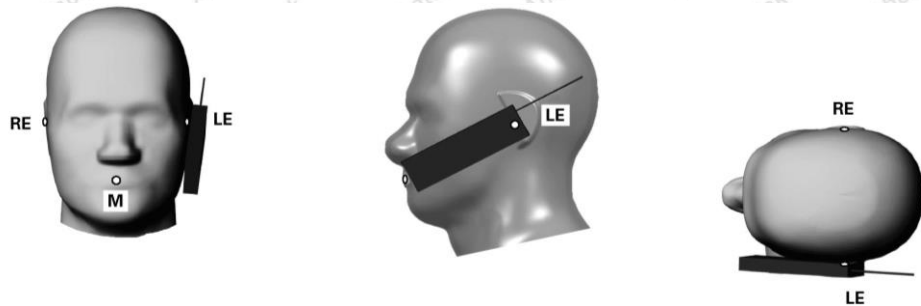


**Handset Vertical and Horizontal Reference Lines**



### 8.2. Position for Cheek/Touch

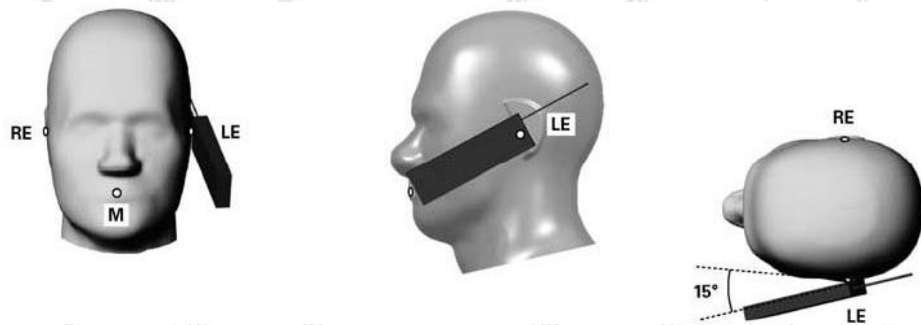
- (a) To position the device with the vertical center line of the body of the device and the horizontal line crossing the center piece in a plane parallel to the sagittal plane of the phantom. While maintaining the device in this plane, align the vertical center line with the reference plane containing the three ear and mouth reference point (M: Mouth, RE: Right Ear, and LE: Left Ear) and align the center of the ear piece with the line RE-LE.
- (b) To move the device towards the phantom with the ear piece aligned with the line LE-RE until the phone touched the ear. While maintaining the device in the reference plane and maintaining the phone contact with the ear, move the bottom of the phone until any point on the front side is in contact with the cheek of the phantom or until contact with the ear is lost.



**Cheek Position**

### 8.3. Position for Ear / 15°Tilt

- (a) To position the device in the “cheek” position described above.
- (b) While maintaining the device the reference plane described above and pivoting against the ear, moves it outward away from the mouth by an angle of 15 degrees or until contact with the ear is lost (see Fig. 8.3).

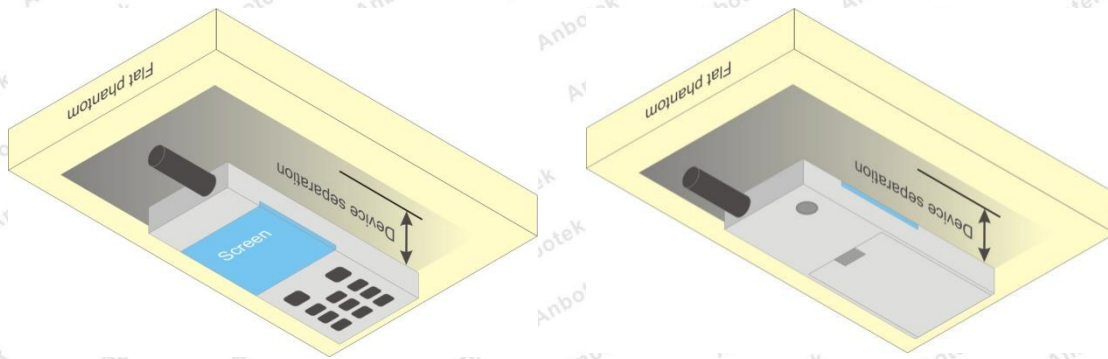


**Tilt Position**

#### 8. 4. Body Worn Position

Body-worn operating configurations are tested with the belt-clips and holsters attached to the device and positioned against a flat phantom in a normal use configuration. Per KDB 648474 D04, body-worn accessory exposure is typically related to voice mode operations when handsets are carried in body-worn accessories. The body-worn accessory procedures in FCC KDB 447498 D01 should be used to test for body-worn accessory SAR compliance, without a headset connected to it. This enables the test results for such configuration to be compatible with that required for hotspot mode when the body-worn accessory test separation distance is greater than or equal to that required for hotspot mode, when applicable. When the reported SAR for body-worn accessory, measured without a headset connected to the handset is  $< 1.2 \text{ W/kg}$ , the highest reported SAR configuration for that wireless mode and frequency band should be repeated for that body-worn accessory with a handset attached to the handset.

Accessories for body-worn operation configurations are divided into two categories: those that do not contain metallic components and those that do contain metallic components. When multiple accessories that do not contain metallic components are supplied with the device, the device is tested with only the accessory that dictates the closest spacing to the body. Then multiple accessories that contain metallic components are test with the device with each accessory. If multiple accessories share an identical metallic component (i.e. the same metallic belt-chip used with different holsters with no other metallic components) only the accessory that dictates the closest spacing to the body is tested.



**Body Worn Position**

## 9. Measurement Procedures

The measurement procedures are as follows:

- (a) Use base station simulator (if applicable) or engineering software to transmit RF power continuously (continuous Tx) in the middle channel.
- (b) Keep EUT to radiate maximum output power or 100% duty factor (if applicable)
- (c) Measure output power through RF cable and power meter.
- (d) Place the EUT in the positions as setup photos demonstrates.
- (e) Set scan area, grid size and other setting on the DASY software.
- (f) Measure SAR transmitting at the middle channel for all applicable exposure positions.
- (g) Identify the exposure position and device configuration resulting the highest SAR
- (h) Measure SAR at the lowest and highest channels at the worst exposure position and device configuration if applicable.

According to the test standard, the recommended procedure for assessing the peak spatial-average SAR value consists of the following steps:

- (a) Power reference measurement
- (b) Area scan
- (c) Zoom scan
- (d) Power drift measurement

### 9.1. Spatial Peak SAR Evaluation

The procedure for spatial peak SAR evaluation has been implemented according to the test standard. It can be conducted for 1g and 10g, as well as for user-specific masses. The DASY software includes all numerical procedures necessary to evaluate the spatial peak SAR value.

The base for the evaluation is a "cube" measurement. The measured volume must include the 1g and 10g cubes with the highest averaged SAR values. For that purpose, the center of the measured volume is aligned to the interpolated peak SAR value of a previously performed area scan.

The entire evaluation of the spatial peak values is performed within the post-processing engine (SEMCAD). The system always gives the maximum values for the 1g and 10g cubes. The algorithm to find the cube with highest averaged SAR is divided into the following stages:

- (a) Extraction of the measured data (grid and values) from the Zoom Scan
- (b) Calculation of the SAR value at every measurement point based on all stored data (A/D values and measurement parameters)
- (c) Generation of a high-resolution mesh within the measured volume
- (d) Interpolation of all measured values from the measurement grid to the high-resolution grid
- (e) Extrapolation of the entire 3-D field distribution to the phantom surface over the distance from

#### Shenzhen Anbotek Compliance Laboratory Limited

sensor to surface

- (f) Calculation of the averaged SAR within masses of 1g and 10g

## 9. 2. Power Reference Measurement

The Power Reference Measurement and Power Drift Measurements are for monitoring the power drift of the device under test in the batch process. The minimum distance of probe sensors to surface determines the closest measurement point to phantom surface. This distance cannot be smaller than the distance of sensor calibration points to probe tip as defined in the probe properties.

## 9. 3. Area Scan Procedures

The area scan is used as a fast scan in two dimensions to find the area of high field values, before doing a fine measurement around the hot spot. The sophisticated interpolation routines implemented in DASY software can find the maximum found in the scanned area, within a range of the global maximum. The range (in dB0 is specified in the standards for compliance testing. For example, a 2 dB range is required in IEEE standard 1528 and IEC 62209 standards, whereby 3 dB is a requirement when compliance is assessed in accordance with the ARIB standard (Japan), if only one zoom scan follows the area scan, then only the absolute maximum will be taken as reference. For cases where multiple maximums are detected, the number of zoom scans has to be increased accordingly.

Area scan parameters extracted from FCC KDB 865664 D01 SAR measurement 100 MHz to 6 GHz.

	≤ 3 GHz	> 3 GHz
Maximum distance from closest measurement point (geometric center of probe sensors) to phantom surface	5 ± 1 mm	$\frac{1}{2} \cdot \delta \cdot \ln(2) \pm 0.5$ mm
Maximum probe angle from probe axis to phantom surface normal at the measurement location	30° ± 1°	20° ± 1°
Maximum area scan spatial resolution: $\Delta x_{Area}$ , $\Delta y_{Area}$	≤ 2 GHz: ≤ 15 mm 2 – 3 GHz: ≤ 12 mm	3 – 4 GHz: ≤ 12 mm 4 – 6 GHz: ≤ 10 mm
	When the x or y dimension of the test device, in the measurement plane orientation, is smaller than the above, the measurement resolution must be ≤ the corresponding x or y dimension of the test device with at least one measurement point on the test device.	

### 9. 4. Zoom Scan Procedures

Zoom scans are used to assess the peak spatial SAR values within a cubic averaging volume containing 1 gram and 10gram of simulated tissue. The zoom scan measures points (refer to table below) within a cube whose base faces are centered on the maxima found in a preceding area scan job within the same procedure. When the measurement is done, the zoom scan evaluates the averaged SAR for 1 gram and 10 gram and displays these values next to the job's label.

Zoom scan parameters extracted from FCC KDB 865664 D01 SAR measurement 100 MHz to 6 GHz.

			$\leq 3$ GHz	$> 3$ GHz
Maximum zoom scan spatial resolution: $\Delta x_{Zoom}, \Delta y_{Zoom}$			$\leq 2$ GHz: $\leq 8$ mm 2 – 3 GHz: $\leq 5$ mm *	3 – 4 GHz: $\leq 5$ mm * 4 – 6 GHz: $\leq 4$ mm *
Maximum zoom scan spatial resolution, normal to phantom surface	uniform grid: $\Delta z_{Zoom}(n)$		$\leq 5$ mm	3 – 4 GHz: $\leq 4$ mm 4 – 5 GHz: $\leq 3$ mm 5 – 6 GHz: $\leq 2$ mm
	graded grid	$\Delta z_{Zoom}(1)$ : between 1 <sup>st</sup> two points closest to phantom surface	$\leq 4$ mm	3 – 4 GHz: $\leq 3$ mm 4 – 5 GHz: $\leq 2.5$ mm 5 – 6 GHz: $\leq 2$ mm
		$\Delta z_{Zoom}(n>1)$ : between subsequent points	$\leq 1.5 \cdot \Delta z_{Zoom}(n-1)$	
Minimum zoom scan volume	x, y, z	$\geq 30$ mm	3 – 4 GHz: $\geq 28$ mm 4 – 5 GHz: $\geq 25$ mm 5 – 6 GHz: $\geq 22$ mm	

Note:  $\delta$  is the penetration depth of a plane-wave at normal incidence to the tissue medium; see draft standard IEEE P1528-2011 for details.

\* When zoom scan is required and the reported SAR from the area scan based 1-g SAR estimation procedures of KDB 447498 is  $\leq 1.4$  W/kg,  $\leq 8$  mm,  $\leq 7$  mm and  $\leq 5$  mm zoom scan resolution may be applied, respectively, for 2 GHz to 3 GHz, 3 GHz to 4 GHz and 4 GHz to 6 GHz.

## 9. 5. Volume Scan Procedures

The volume scan is used for assess overlapping SAR distributions for antennas transmitting in different frequency bands. It is equivalent to an oversized zoom scan used in standalone measurements. The measurement volume will be used to enclose all the simultaneous transmitting antennas. For antennas transmitting simultaneously in different frequency bands, the volume scan is measured separately in each frequency band. In order to sum correctly to compute the 1g aggregate SAR, the EUT remain in the same test position for all measurements and all volume scan use the same spatial resolution and grid spacing. When all volume scan were completed, the software, SEMCAD postprocessor can combine and subsequently superpose these measurement data to calculating the multiband SAR.

## 9. 6. Power Drift Monitoring

All SAR testing is under the EUT install full charged battery and transmit maximum output power. In DASY measurement software, the power reference measurement and power drift measurement procedures are used for monitoring the power drift of EUT during SAR test. Both these procedures measure the field at a specified reference position before and after the SAR testing. The software will calculate the field difference in dB. If the power drift more than 5%, the SAR will be retested.

## 10. Conducted Power

### <GSM Conducted power>

GSM850	Burst Average Power (dBm)			Frame-Average Power (dBm)		
TX Channel	128	190	251	128	190	251
Frequency (MHz)	824.2	836.6	848.6	824.2	836.6	848.6
GSM (GMSK, 1 Tx slot)	31.97	<b>32.34</b>	32.25	22.94	23.31	23.22
GPRS (GMSK, 1 Tx slot) – CS1	<b>32.77</b>	<b>31.90</b>	<b>32.72</b>	<b>23.74</b>	<b>22.87</b>	<b>23.69</b>
GPRS (GMSK, 2 Tx slots) – CS1	29.62	29.48	29.66	23.60	23.46	23.64
GPRS (GMSK, 3 Tx slots) – CS1	26.87	27.76	27.79	22.61	23.50	23.53
GPRS (GMSK, 4 Tx slots) – CS1	26.34	26.14	25.70	23.33	23.13	22.69
PCS1900	Burst Average Power (dBm)			Frame-Average Power (dBm)		
TX Channel	512	661	810	512	661	810
Frequency (MHz)	1850.2	1880.0	1909.8	1850.2	1880.0	1909.8
GSM (GMSK, 1 Tx slot)	<b>30.83</b>	30.38	30.03	21.80	21.35	21.00
GPRS (GMSK, 1 Tx slot) – CS1	<b>30.17</b>	<b>30.81</b>	<b>30.43</b>	<b>21.14</b>	<b>21.78</b>	<b>21.40</b>
GPRS (GMSK, 2 Tx slots) – CS1	27.25	27.05	26.73	21.23	21.03	20.71
GPRS (GMSK, 3 Tx slots) – CS1	25.83	25.56	25.63	21.57	21.30	21.37
GPRS (GMSK, 4 Tx slots) – CS1	24.48	24.44	24.20	21.47	21.43	21.19

Remark: The frame-averaged power is linearly scaled the maximum burst averaged power over 8 time slots.

The calculated method are shown as below:

Frame-averaged power = Maximum burst averaged power (1 Tx Slot) – 9.03 dB

Frame-averaged power = Maximum burst averaged power (2 Tx Slots) – 6.02 dB

Frame-averaged power = Maximum burst averaged power (3 Tx Slots) - 4.26 dB

Frame-averaged power = Maximum burst averaged power (4 Tx Slots) – 3.01 dB

#### Note:

1. Per KDB 447498 D01, the maximum output power channel is used for SAR testing and for further SAR test reduction
2. For Head SAR testing, GSM should be evaluated, therefore the EUT was set in GSM Voice for GSM850and PCS1900.
3. For Hotspot mode SAR testing, GPRS should be evaluated, therefore the EUT was set in GPRS 1 Tx slot for GSM850and PCS1900 due to its highest frame-average power.

**<WCDMA Conducted Power>**

The following tests were conducted according to the test requirements outlines in 3GPP TS 34.121 specification. A summary of these settings are illustrated below:

**HSDPA Setup Configuration:**

- a. The EUT was connected to Base Station Agilent E5515C referred to the Setup Configuration.
- b. The RF path losses were compensated into the measurements.
- c. A call was established between EUT and Base Station with following setting:
  - i. Set Gain Factors ( $\beta_c$  and  $\beta_d$ ) and parameters were set according to each
  - ii. Specific sub-test in the following table, C10.1.4, quoted from the TS 34.121
  - iii. Set RMC 12.2Kbps + HSDPA mode.
  - iv. Set Cell Power = -86 dBm
  - v. Set HS-DSCH Configuration Type to FRC (H-set 1, QPSK)
  - vi. Select HSDPA Uplink Parameters
  - vii. Set Delta ACK, Delta NACK and Delta CQI = 8
  - viii. Set Ack-Nack Repetition Factor to 3
  - ix. Set CQI Feedback Cycle (k) to 4 ms
  - x. Set CQI Repetition Factor to 2
  - xi. Power Ctrl Mode = All Up bits
- d. The transmitted maximum output power was recorded.

**Table C.10.1.4:  $\beta$  values for transmitter characteristics tests with HS-DPCCH**

Sub-test	$\beta_c$	$\beta_d$	$\beta_d$ (SF)	$\beta_c/\beta_d$	$\beta_{hs}$ (Note 1, Note 2)	CM (dB) (Note 3)	MPR (dB) (Note 3)
1	2/15	15/15	64	2/15	4/15	0.0	0.0
2	12/15 (Note 4)	15/15 (Note 4)	64	12/15 (Note 4)	24/15	1.0	0.0
3	15/15	8/15	64	15/8	30/15	1.5	0.5
4	15/15	4/15	64	15/4	30/15	1.5	0.5

Note 1:  $\Delta_{ACK}, \Delta_{NACK}$  and  $\Delta_{CQI} = 30/15$  with  $\beta_{hs} = 30/15 * \beta_c$ .

Note 2: For the HS-DPCCH power mask requirement test in clause 5.2C, 5.7A, and the Error Vector Magnitude (EVM) with HS-DPCCH test in clause 5.13.1A, and HSDPA EVM with phase discontinuity in clause 5.13.1AA,  $\Delta_{ACK}$  and  $\Delta_{NACK} = 30/15$  with  $\beta_{hs} = 30/15 * \beta_c$ , and  $\Delta_{CQI} = 24/15$  with  $\beta_{hs} = 24/15 * \beta_c$ .

Note 3: CM = 1 for  $\beta_c/\beta_d = 12/15, \beta_{hs}/\beta_c = 24/15$ . For all other combinations of DPDCCH, DPCCH and HS-DPCCH the MPR is based on the relative CM difference. This is applicable for only UEs that support HSDPA in release 6 and later releases.

Note 4: For subtest 2 the  $\beta_c/\beta_d$  ratio of 12/15 for the TFC during the measurement period (TF1, TF0) is achieved by setting the signalled gain factors for the reference TFC (TF1, TF1) to  $\beta_c = 11/15$  and  $\beta_d = 15/15$ .

**Setup Configuration**



**HSUPA Setup Configuration:**

- a. The EUT was connected to Base Station Agilent E5515C referred to the Setup Configuration.
- b. The RF path losses were compensated into the measurements.
- c. A call was established between EUT and Base Station with following setting \* :
  - i. Call Configs = 5.2B, 5.9B, 5.10B, and 5.13.2B with QPSK
  - ii. Set the Gain Factors ( $\beta_c$  and  $\beta_d$ ) and parameters (AG Index) were set according to each specific sub-test in the following table, C11.1.3, quoted from the TS 34.121
  - iii. Set Cell Power = -86 dBm
  - iv. Set Channel Type = 12.2k + HSPA
  - v. Set UE Target Power
  - vi. Power Ctrl Mode= Alternating bits
  - vii. Set and observe the E-TFCl
  - viii. Confirm that E-TFCl is equal to the target E-TFCl of 75 for sub-test 1, and other subtest's E-TFCl
- d. The transmitted maximum output power was recorded.

**Table C.11.1.3:  $\beta$  values for transmitter characteristics tests with HS-DPCCH and E-DCH**

Sub-test	$\beta_c$	$\beta_d$	$\beta_d$ (SF)	$\beta_c/\beta_d$	$\beta_{HS}$ (Note 1)	$\beta_{ec}$	$\beta_{ed}$ (Note 5) (Note 6)	$\beta_{ed}$ (SF)	$\beta_{ed}$ (Codes)	CM (dB) (Note 2)	MPR (dB) (Note 2)	AG Index (Note 6)	E-TFCl
1	11/15 (Note 3)	15/15 (Note 3)	64	11/15 (Note 3)	22/15	209/225	1309/225	4	1	1.0	0.0	20	75
2	6/15	15/15	64	6/15	12/15	12/15	94/75	4	1	3.0	2.0	12	67
3	15/15	9/15	64	15/9	30/15	30/15	$\beta_{ed1}: 47/15$ $\beta_{ed2}: 47/15$	4	2	2.0	1.0	15	92
4	2/15	15/15	64	2/15	4/15	2/15	56/75	4	1	3.0	2.0	17	71
5	15/15 (Note 4)	15/15 (Note 4)	64	15/15 (Note 4)	30/15	24/15	134/15	4	1	1.0	0.0	21	81

Note 1:  $\Delta_{ACK}, \Delta_{NACK}$  and  $\Delta_{CQI} = 30/15$  with  $\beta_{HS} = 30/15 * \beta_c$ .

Note 2: CM = 1 for  $\beta_c/\beta_d = 12/15, \beta_{HS}/\beta_c = 24/15$ . For all other combinations of DPDCH, DPCCH, HS-DPCCH, E-DPDCH and E-DPCCH the MPR is based on the relative CM difference.

Note 3: For subtest 1 the  $\beta_c/\beta_d$  ratio of 11/15 for the TFC during the measurement period (TF1, TF0) is achieved by setting the signalled gain factors for the reference TFC (TF1, TF1) to  $\beta_c = 10/15$  and  $\beta_d = 15/15$ .

Note 4: For subtest 5 the  $\beta_c/\beta_d$  ratio of 15/15 for the TFC during the measurement period (TF1, TF0) is achieved by setting the signalled gain factors for the reference TFC (TF1, TF1) to  $\beta_c = 14/15$  and  $\beta_d = 15/15$ .

Note 5: In case of testing by UE using E-DPDCH Physical Layer category 1, Sub-test 3 is omitted according to TS25.306 Table 5.1g.

Note 6:  $\beta_{ed}$  can not be set directly, it is set by Absolute Grant Value.

**Setup Configuration**

<WCDMA Conducted Power>

Band	WCDMA Band 2			WCDMA Band 5		
<b>TX Channel</b>	<b>9262</b>	<b>9400</b>	<b>9538</b>	<b>4132</b>	<b>4183</b>	<b>4233</b>
<b>Frequency (MHz)</b>	<b>1852.4</b>	<b>1880.0</b>	<b>1907.6</b>	<b>826.4</b>	<b>836.6</b>	<b>846.6</b>
<b>RMC 12.2Kbps</b>	23.27	23.09	<b>23.48</b>	22.83	<b>23.27</b>	23.09
<b>HSDPA Subtest-1</b>	22.21	22.52	22.30	22.67	22.21	22.52
<b>HSDPA Subtest-2</b>	20.93	21.78	21.42	20.89	20.93	21.78
<b>HSDPA Subtest-3</b>	20.72	21.54	21.06	21.18	20.72	21.54
<b>HSDPA Subtest-4</b>	20.71	20.71	20.49	19.99	20.71	20.71
<b>HSUPA Subtest-1</b>	22.27	22.65	21.80	22.82	22.27	22.65
<b>HSUPA Subtest-2</b>	21.41	21.50	21.22	21.61	21.41	21.50
<b>HSUPA Subtest-3</b>	20.94	21.00	21.52	21.56	20.94	21.00
<b>HSUPA Subtest-4</b>	19.71	20.38	20.15	20.46	19.71	20.38
<b>HSUPA Subtest-5</b>	20.15	20.36	20.26	20.80	20.15	20.36

**General Note**

1. Per KDB 941225 D01 v02, RMC 12.2kbps setting is used to evaluate SAR. If AMR 12.2kbps power is < 0.25dB higher than RMC 12.2kbps, SAR tests with AMR 12.2kbps can be excluded.
2. By design, AMR and HSDPA/HSUPA RF power will not be larger than RMC 12.2kbps, detailed information is included in Tune-up Procure exhibit.
3. It is expected by the manufacturer that MPR for some HSDPA/HSUPA subtests may differ from the specification of 3GPP, according to the chipset implementation in this model. The implementation and expected deviation are detailed in tune-up procedure exhibit.

**<WIFI 2.4GHz Conducted Power>**

Mode	Channel	Frequency (MHz)	AVG Power (dBm)	Test Rate Data
802.11b	1	2412	15.05	1 Mbps
	6	2437	<b>15.55</b>	1 Mbps
	11	2462	15.18	1 Mbps
802.11g	1	2412	14.25	6 Mbps
	6	2437	14.98	6 Mbps
	11	2462	13.13	6 Mbps
802.11n(20MHz)	1	2412	12.75	MCS0
	6	2437	14.04	MCS0
	11	2462	12.83	MCS0
802.11n(40MHz)	3	2422	12.91	MCS0
	6	2437	13.96	MCS0
	9	2452	13.08	MCS0

**Note:**

1. Per KDB 447498 D01, the 1-g SAR test exclusion thresholds for 100 MHz to 6 GHz at *test separation distances* ≤ 50 mm are determined by:

$$[(\text{max. power of channel, including tune-up tolerance, mW}) / (\text{min. test separation distance, mm})] \cdot [\sqrt{f(\text{GHz})}] \leq 3.0 \text{ for 1-g SAR, where}$$

f(GHz) is the RF channel transmit frequency in GHz

Power and distance are rounded to the nearest mW and mm before calculation

The result is rounded to one decimal place for comparison

Mode	Frequency (GHz)	Tune-up Power (dBm)	Max. Power (mW)	Test distance (mm)	Result	exclusion thresholds for 1-g SAR
802.11b	2.462	<b>16.0</b>	39.81	5	12.46	3.0

2. Base on the result of note1, RF exposure evaluation of 802.11 b and g mode is required.
3. Per KDB 248227 D01, choose the highest output power channel to test SAR and determine further SAR exclusion.
4. Per KDB 248227 D01, In the 2.4 GHz band, separate SAR procedures are applied to DSSS and OFDM configurations to simplify DSSS test requirements. SAR is not required for the following 2.4 GHz OFDM conditions:
  - 1) When KDB Publication 447498 SAR test exclusion applies to the OFDM configuration.
  - 2) When the highest reported SAR for DSSS is adjusted by the ratio of OFDM to DSSS specified maximum output power and the adjusted SAR is ≤ 1.2 W/kg.

**<Bluetooth Conducted Power>**

**BLE**

Mode	Channel	Frequency (MHz)	Conducted Average Power (dBm)
GFSK	00	2402	-7.32
	19	2440	-5.93
	39	2480	-7.67

Mode	Channel	Frequency (MHz)	Conducted Average Power (dBm)
GFSK	00	2402	4.68
	39	2441	5.73
	78	2480	5.07
π/4DQPSK	00	2402	4.00
	39	2441	5.00
	78	2480	4.31
8DPSK	00	2402	4.00
	39	2441	4.93
	78	2480	4.33

**Note:**

Per KDB 447498 D01v05r02, the 1-g and 10-g SAR test exclusion thresholds for 100 MHz to 6 GHz at test separation distances ≤ 50 mm are determined by:

$$[(\text{max. power of channel, including tune-up tolerance, mW}) / (\text{min. test separation distance, mm})] \cdot [\sqrt{f(\text{GHz})}]$$

≤ 3.0 for 1-g SAR and ≤ 7.5 for 10-g extremity SAR

f(GHz) is the RF channel transmit frequency in GHz

Power and distance are rounded to the nearest mW and mm before calculation

The result is rounded to one decimal place for comparison

Tune-up Power (dBm)	Separation Distance (mm)	Frequency (GHz)	exclusion thresholds
6	5	2.480	1.25

Per KDB 447498 D01, when the minimum test separation distance is < 5 mm, a distance of 5 mm is applied to determine SAR test exclusion. The test exclusion threshold is 1.25 which is ≤ 3, SAR testing is not required.

**Estimated SAR for Bluetooth**

Position	f (GHz)	Distance (mm)	Upper limit of power *		Estimated <sub>1g</sub> (W/kg)
			dBm	mW	
Head	2.48	5	6	3.98	0.167
Body	2.48	10	6	3.98	0.084

\* - Maximum possible output power declared by manufacturer

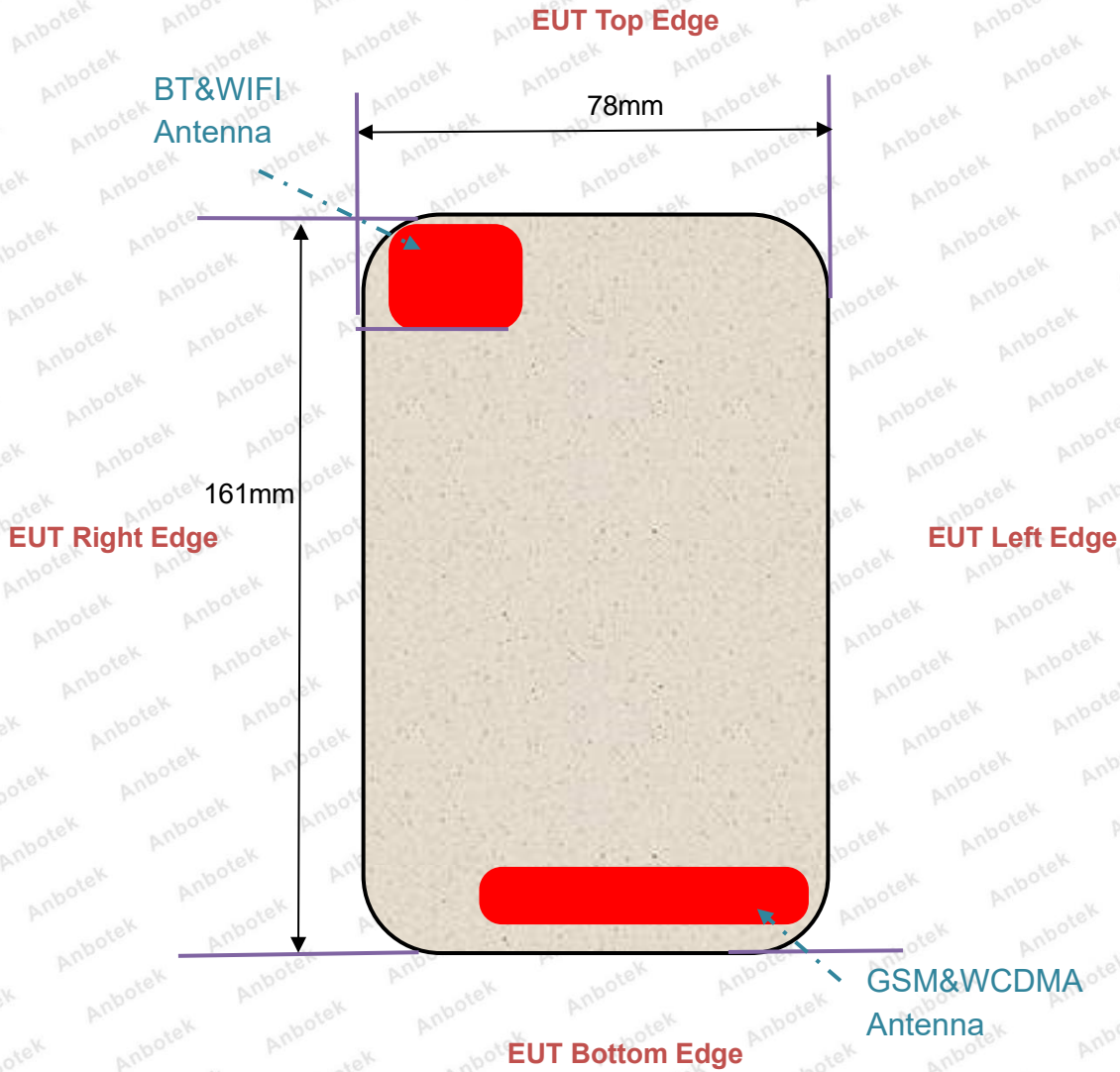
When standalone SAR test exclusion applies to an antenna that transmits simultaneously with other antennas, the standalone SAR must be estimated according to following to determine simultaneous transmission SAR test exclusion:

(max. power of channel, including tune-up tolerance, mW) / (min. test separation distance, mm) · [√f(GHz)/x] W/kg for test separation distances ≤ 50 mm;

Where x = 7.5 for 1-g SAR.

When the minimum test separation distance is < 5 mm, a distance of 5 mm is applied to determine SAR test exclusion

## 11. Antenna Location



**EUT BACK VIEW**

**Distance of The Antenna to the EUT surface and edge**

Antennas	Front	Back	Top Side	Bottom Side	Left Side	Right Side
<b>BT&amp;WIFI</b>	0mm	0mm	0mm	142mm	55mm	0mm
<b>GSM&amp;WCMDA</b>	0mm	0mm	150mm	0mm	0mm	22mm

Positions for SAR tests; Hotspot mode						
Antennas	Front	Back	Top Side	Bottom Side	Left Side	Right Side
<b>BT&amp;WIFI</b>	Yes	Yes	Yes	No	No	Yes
<b>WWAN</b>	Yes	Yes	No	Yes	Yes	Yes

**General Note:** Referring to KDB 941225 D06, When the overall device length and width are  $\geq 9\text{cm} \times 5\text{cm}$ , the test distance is 10mm, SAR must be measured for all sides and surfaces with a transmitting antenna located with 25mm from that surface or edge.

## 12. SAR Test Results Summary

### General Note:

- Per KDB 447498 D01v05r01, the reported SAR is the measured SAR value adjusted for maximum tune-up tolerance.

*Scaling Factor = tune-up limit power (mW) / EUT RF power (mW), where tune-up limit is the maximum rated power among all production units.*

*Reported SAR(W/kg) = Measured SAR(W/kg) \* Scaling Factor*

- Per KDB 447498 D01v05r01, for each exposure position, if the highest output channel reported SAR ≤ 0.8W/kg, other channels SAR testing are not necessary
- Per KDB865664 D01, for each frequency band, **repeated SAR measurement is required** only when the measured SAR is ≥ 0.8W/Kg; if the deviation among the repeated measurement is ≤ 20%, and the measured SAR < 1.45W/Kg, only one repeated measurement is required.

### 12.1. Head SAR Results

#### <GSM>

Plot No.	Band	Mode	Test Position	Gap (cm)	Ch.	Freq. (MHz)	Average Power (dBm)	Tune-Up Limit (dBm)	Scaling Factor	Measured SAR <sub>1g</sub> (W/kg)	Reported SAR <sub>1g</sub> (W/kg)
#1	GSM850	GSM Voice	Left Cheek	0	190	836.6	32.34	33	1.16	0.127	<b>0.15</b>
	GSM850	GSM Voice	Left Tilt	0	190	836.6	32.34	33	1.16	0.059	0.07
	GSM850	GSM Voice	Right Cheek	0	190	836.6	32.34	33	1.16	0.108	0.13
	GSM850	GSM Voice	Right Tilt	0	190	836.6	32.34	33	1.16	0.058	0.07
#2	PCS1900	GSM Voice	Left Cheek	0	512	1850.2	30.83	31.5	1.17	0.016	0.02
	PCS1900	GSM Voice	Left Tilt	0	512	1850.2	30.83	31.5	1.17	0.004	0.00
	PCS1900	GSM Voice	Right Cheek	0	512	1850.2	30.83	31.5	1.17	0.024	<b>0.03</b>
	PCS1900	GSM Voice	Right Tilt	0	512	1850.2	30.83	31.5	1.17	0.007	0.01

#### <WCDMA>

Plot No.	Band	Mode	Test Position	Gap (cm)	Ch.	Freq. (MHz)	Average Power (dBm)	Tune-Up Limit (dBm)	Scaling Factor	Measured SAR <sub>1g</sub> (W/kg)	Reported SAR <sub>1g</sub> (W/kg)
#3	WCDMA Band 2	RMC	Left Cheek	0	9538	1907.6	23.48	24.5	1.26	0.030	0.04
	WCDMA Band 2	RMC	Left Tilt	0	9538	1907.6	23.48	24.5	1.26	0.010	0.01
#3	WCDMA Band 2	RMC	Right Cheek	0	9538	1907.6	23.48	24.5	1.26	0.043	<b>0.05</b>

### Shenzhen Anbotek Compliance Laboratory Limited

Address: 1/F, Building D, Sogood Science and Technology Park, Sanwei Community, Hangcheng Street, Bao'an District, Shenzhen, Guangdong, China.

Tel: (86)755-26066440 Fax: (86)755-26014772 Email: service@anbotek.com

Hotline  
400-003-0500  
www.anbotek.com




	WCDMA Band 2	RMC	Right Tilt	0	9538	1907.6	23.48	24.5	1.26	0.017	0.02
#4	WCDMA Band 5	RMC	Left Cheek	0	4183	836.6	23.27	24.5	1.33	0.418	<b>0.55</b>
	WCDMA Band 5	RMC	Left Tilt	0	4183	836.6	23.27	24.5	1.33	0.225	0.30
	WCDMA Band 5	RMC	Right Cheek	0	4183	836.6	23.27	24.5	1.33	0.112	0.15
	WCDMA Band 5	RMC	Right Tilt	0	4183	836.6	23.27	24.5	1.33	0.128	0.17
SIM2											
	WCDMA Band 5	RMC	Left Cheek	0	4183	836.6	23.27	24.5	1.33	0.405	0.54

**Shenzhen Anbotek Compliance Laboratory Limited**

Address: 1/F, Building D, Sogood Science and Technology Park, Sanwei Community, Hangcheng Street, Bao'an District, Shenzhen, Guangdong, China.

Tel: (86)755-26066440 Fax: (86)755-26014772 Email: service@anbotek.com

 Hotline  
400-003-0500  
www.anbotek.com

<WIFI 2.4GHz>

Plot No.	Band	Mode	Test Position	Gap (cm)	Ch.	Freq. (MHz)	Average Power (dBm)	Tune-Up Limit (dBm)	Scaling Factor	Measured SAR <sub>1g</sub> (W/kg)	Reported SAR <sub>1g</sub> (W/kg)
	WIFI 2.4GHz	802.11b	Left Cheek	0	6	2437	15.55	16	1.11	0.623	0.69
	WIFI 2.4GHz	802.11b	Left Tilt	0	6	2437	15.55	16	1.11	0.702	0.78
	WIFI 2.4GHz	802.11b	Right Cheek	0	6	2437	15.55	16	1.11	0.714	0.79
#5	WIFI 2.4GHz	802.11b	Right Tilt	0	6	2437	15.55	16	1.11	0.776	<b>0.86</b>
	WIFI 2.4GHz	802.11b	Right Tilt	0	11	2462	15.18	16	1.21	0.694	0.84

**12.2. Body SAR Results**

<GSM>

Plot No.	Band	Mode	Test Position	Gap (cm)	Ch.	Freq. (MHz)	Average Power (dBm)	Tune-Up Limit (dBm)	Scaling Factor	Measured SAR <sub>1g</sub> (W/kg)	Reported SAR <sub>1g</sub> (W/kg)
	GSM850	GPRS (1 Tx slots)	Front	1	128	824.2	32.77	33	1.05	0.258	0.27
#6	GSM850	GPRS (1 Tx slots)	Back	1	128	824.2	32.77	33	1.05	0.462	<b>0.49</b>
	GSM850	GPRS (1 Tx slots)	Left Side	1	128	824.2	32.77	33	1.05	0.151	0.16
	GSM850	GPRS (1 Tx slots)	Right Side	1	128	824.2	32.77	33	1.05	0.169	0.18
	GSM850	GPRS (1 Tx slots)	Bottom Side	1	128	824.2	32.77	33	1.05	0.129	0.14
	PCS1900	GPRS (1 Tx slots)	Front	1	661	1880	30.81	31.5	1.17	0.341	0.40
#7	PCS1900	GPRS (1 Tx slots)	Back	1	661	1880	30.81	31.5	1.17	0.664	<b>0.78</b>
	PCS1900	GPRS (1 Tx slots)	Left Side	1	661	1880	30.81	31.5	1.17	0.118	0.14
	PCS1900	GPRS (1 Tx slots)	Right Side	1	661	1880	30.81	31.5	1.17	0.128	0.15
	PCS1900	GPRS (4 Tx slots)	Bottom Side	1	661	1880	30.81	31.5	1.17	0.529	0.62

<WCDMA>

Plot No.	Band	Mode	Test Position	Gap (cm)	Ch.	Freq. (MHz)	Average Power (dBm)	Tune-Up Limit (dBm)	Scaling Factor	Measured SAR <sub>1g</sub> (W/kg)	Reported SAR <sub>1g</sub> (W/kg)
	WCDMA Band 2	RMC 12.2K	Front	1	9538	1907.6	23.48	24.5	1.26	0.351	0.44
	WCDMA Band 2	RMC 12.2K	Back	1	9538	1907.6	23.48	24.5	1.26	0.526	0.67
	WCDMA Band 2	RMC 12.2K	Left Side	1	9538	1907.6	23.48	24.5	1.26	0.130	0.16
	WCDMA Band 2	RMC 12.2K	Right Side	1	9538	1907.6	23.48	24.5	1.26	0.166	0.21
	WCDMA Band 2	RMC 12.2K	Bottom Side	1	9538	1907.6	23.48	24.5	1.26	0.639	0.81
#8	WCDMA Band 2	RMC 12.2K	Bottom Side	1	9400	1880	23.09	24.5	1.38	0.751	<b>1.04</b>
	WCDMA Band 2	RMC 12.2K	Bottom Side	1	9262	1852.4	23.27	24.5	1.33	0.599	0.80
SIM 2											
	WCDMA Band 2	RMC 12.2K	Bottom Side	1	9400	1880	23.09	24.5	1.38	0.722	1.00
	WCDMA Band 5	RMC 12.2K	Front	1	4183	836.6	23.27	24.5	1.33	0.225	0.30
#9	WCDMA Band 5	RMC 12.2K	Back	1	4183	836.6	23.27	24.5	1.33	0.418	<b>0.55</b>
	WCDMA Band 5	RMC 12.2K	Left Side	1	4183	836.6	23.27	24.5	1.33	0.112	0.15
	WCDMA Band 5	RMC 12.2K	Right Side	1	4183	836.6	23.27	24.5	1.33	0.128	0.17
	WCDMA Band 5	RMC 12.2K	Bottom Side	1	4183	836.6	23.27	24.5	1.33	0.193	0.26

**Shenzhen Anbotek Compliance Laboratory Limited**

Address: 1/F, Building D, Sogood Science and Technology Park, Sanwei Community, Hangcheng Street, Bao'an District, Shenzhen, Guangdong, China.  
Tel: (86)755-26066440 Fax: (86)755-26014772 Email: service@anbotek.com

Hotline  
400-003-0500  
www.anbotek.com

<WIFI 2.4GHz>

Plot No.	Band	Mode	Test Position	Gap (cm)	Ch.	Freq. (MHz)	Average Power (dBm)	Tune-Up Limit (dBm)	Scaling Factor	Measured SAR <sub>1g</sub> (W/kg)	Reported SAR <sub>1g</sub> (W/kg)
	WIFI 2.4GHz	802.11b	Front	1	6	2437	15.55	16	1.11	0.241	0.27
	WIFI 2.4GHz	802.11b	Back	1	6	2437	15.55	16	1.11	0.265	0.29
	WIFI 2.4GHz	802.11b	Right Side	1	6	2437	15.55	16	1.11	0.121	0.13
#10	WIFI 2.4GHz	802.11b	Top Side	1	6	2437	15.55	16	1.11	0.588	<b>0.65</b>

### 13. SAR Measurement Variability

SAR measurement variability must be assessed for each frequency band, which is determined by the SAR probe calibration point and tissue-equivalent medium used for the device measurements. When both head and body tissue-equivalent media are required for SAR measurements in a frequency band, the variability measurement procedures should be applied to the tissue medium with the highest measured SAR, using the highest measured SAR configuration for that tissue-equivalent medium.

The following procedures are applied to determine if repeated measurements are required.

- 1) Repeated measurement is not required when the original highest measured SAR is  $< 0.80$  W/kg; steps 2) through 4) do not apply.
- 2) When the original highest measured SAR is  $\geq 0.80$  W/kg, repeat that measurement once.
- 3) Perform a second repeated measurement only if the ratio of largest to smallest SAR for the original and first repeated measurements is  $> 1.20$  or when the original or repeated measurement is  $\geq 1.45$  W/kg (~ 10% from the 1-g SAR limit).
- 4) Perform a third repeated measurement only if the original, first or second repeated measurement is  $\geq 1.5$  W/kg and the ratio of largest to smallest SAR for the original, first and second repeated measurements is  $> 1.20$ .

## 14. Simultaneous Transmission Analysis

### 13.1. Simultaneous TX SAR Considerations

No.	Applicable Simultaneous Transmission
1.	GSM+WIFI 2.4GHz/Bluetooth
2.	WCDMA+WIFI2.4GHz/Bluetooth

**Note:**

1. WIFI 2.4GHz and Bluetooth share the same antenna, and can not transmit simultaneously.
2. Because Bluetooth SAR values are less than WIFI, so we choose WIFI SAR values to calculate Simultaneous SAR.

### 13.2. Evaluation of Simultaneous SAR

**< Head Exposure Conditions >**

Simultaneous transmission SAR for WIFI2.4G and GSM

Test Position	WIFI 2.4G SAR <sub>1g</sub> (W/Kg)	GSM 850 SAR <sub>1-g</sub> (W/Kg)	GSM 1900 SAR <sub>1-g</sub> (W/Kg)	MAX. ΣSAR <sub>1-g</sub> (W/Kg)	SAR <sub>10g</sub> Limit (W/Kg)
Left Cheek	0.69	0.15	0.02	0.84	1.6
Left Tilt	0.78	0.07	0.00	0.85	1.6
Right Cheek	0.79	0.13	0.03	0.92	1.6
Right Tilt	0.86	0.07	0.01	<b>0.93</b>	1.6

Simultaneous transmission SAR for WIFI2.4G and WCDMA

Test Position	WIFI 2.4G SAR <sub>1-g</sub> (W/Kg)	WCDMA BAND 2 SAR <sub>1-g</sub> (W/Kg)	WCDMA BAND 5 SAR <sub>1-g</sub> (W/Kg)	MAX. ΣSAR <sub>1-g</sub> (W/Kg)	SAR <sub>10g</sub> Limit (W/Kg)
Left Cheek	0.69	0.04	0.30	0.99	1.6
Left Tilt	0.78	0.01	0.55	<b>1.33</b>	1.6
Right Cheek	0.79	0.05	0.15	0.94	1.6
Right Tilt	0.86	0.02	0.17	1.03	1.6

**<Body Exposure Conditions>**

Simultaneous transmission SAR for WIFI2.4G and GSM

Test Position	WiFi SAR <sub>1-g</sub> (W/Kg)	GSM 850 <sub>1-g</sub> (W/Kg)	PCS 1900 <sub>1-g</sub> (W/Kg)	MAX. ΣSAR <sub>1-g</sub> (W/Kg)	SAR <sub>1-g</sub> Limit (W/Kg)	Simut. Meas. Required
Front	0.27	0.27	0.40	0.67	1.6	No
Back	0.29	0.49	0.78	<b>1.07</b>	1.6	No
Left Side	N/A	0.16	0.14	0.16	1.6	No
Right Side	0.13	0.18	0.15	0.31	1.6	No
Top side	0.65	N/A	N/A	0.65	1.6	No
Bottom Side	N/A	0.14	0.62	0.62	1.6	No

Simultaneous transmission SAR for WIFI2.4G and WCDMA

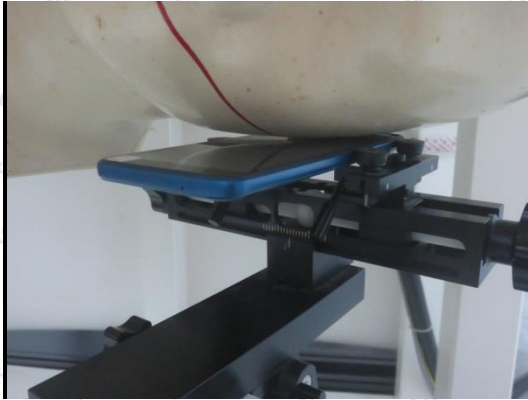
Test Position	WiFi SAR <sub>1-g</sub> (W/Kg)	WCDMA Band 2 <sub>1-g</sub> (W/Kg)	WCDMA Band 5 <sub>1-g</sub> (W/Kg)	MAX. ΣSAR <sub>1-g</sub> (W/Kg)	SAR <sub>1-g</sub> Limit (W/Kg)	Simut. Meas. Required
Front	0.27	0.44	0.30	0.71	1.6	No
Back	0.29	0.67	0.55	0.96	1.6	No
Left Side	N/A	0.16	0.15	0.16	1.6	No
Right Side	0.13	0.21	0.17	0.34	1.6	No
Top side	0.65	N/A	N/A	0.65	1.6	No
Bottom Side	N/A	1.04	0.26	<b>1.04</b>	1.6	No



## 15. Measurement Uncertainty

Per KDB 865664 D01 SAR Measurement 100 MHz to 6 GHz, when the highest measured 1-g SAR within a frequency band is  $< 1.5$  W/Kg, the extensive SAR measurement uncertainty analysis described in IEC 62209-2:2010 is not required in SAR reports submitted for equipment approval.

## Appendix A. EUT Photos and Test Setup Photos



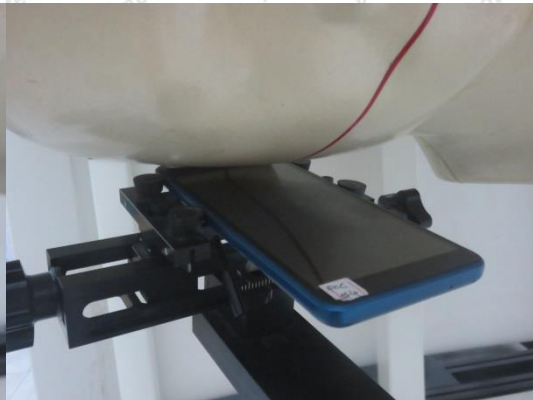
Left Cheek



Left Tilt 15°



Right Cheek



Right Tilt 15°



Body Front(10mm)



Body Back(10mm)



**Top (10mm)**

**Bottom (10mm)**



**Left(10mm)**

**Right(10mm)**

## Appendix B. Plots of SAR System Check

Date: 10/12/2020

### 835MHz Head System Check

DUT: Dipole 835 MHz; Type: D835V2; Serial: D835V2 - SN:4d154

Communication System: UID 0, CW; Frequency: 835 MHz; Duty Cycle: 1:1

Medium parameters used:  $f = 835$  MHz;  $\sigma = 0.915$  S/m;  $\epsilon_r = 40.66$ ;  $\rho = 1000$  kg/m<sup>3</sup>

Phantom section: Flat Section

DASY5 Configuration:

- Probe: EX3DV4 – SN7396; ConvF(9.71, 9.71, 9.71); Calibrated: 05.06.2020;
- Sensor-Surface: 2mm (Mechanical Surface Detection)
- Electronics: DAE4 Sn387; Calibrated: 09.06.2020
- Phantom: SAM1; Type: QD000P40CD; Serial: TP:1670
- Measurement SW: DASY52, Version 52.8 (2); SEMCAD X Version 14.6.10 (7164)

**Configuration/Pin=250mW/Area Scan (7x7x1):** Measurement grid: dx=15mm, dy=15mm

Maximum value of SAR (measured) = 2.63 W/kg

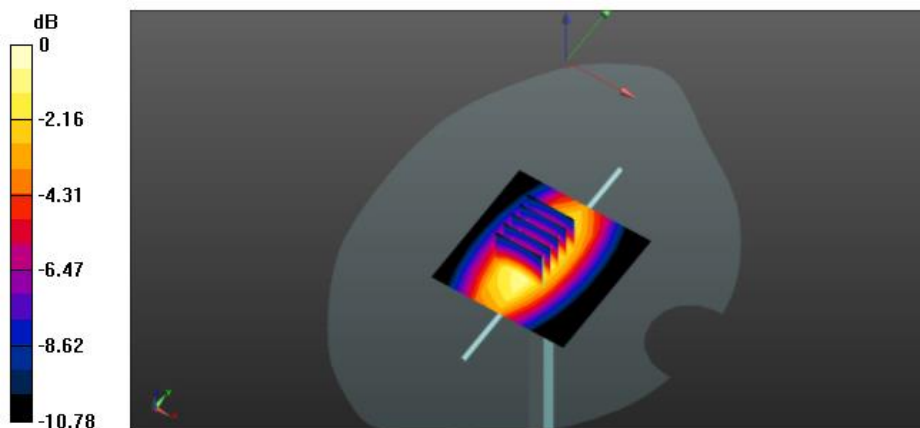
**Configuration/Pin=250mW/Zoom Scan (5x5x7)/Cube 0:** Measurement grid: dx=8mm, dy=8mm, dz=5mm

Reference Value = 60.211 V/m; Power Drift = -0.08 dB

Peak SAR (extrapolated) = 3.15 W/kg

**SAR(1 g) = 2.51 W/kg; SAR(10 g) = 1.57 W/kg**

Maximum value of SAR (measured) = 2.86 W/kg



0 dB = 2.86 W/kg = 4.56 dBW/kg

### Shenzhen Anbotek Compliance Laboratory Limited

Address: 1/F, Building D, Sogood Science and Technology Park, Sanwei Community, Hangcheng Street, Bao'an District, Shenzhen, Guangdong, China.

Tel: (86)755-26066440 Fax: (86)755-26014772 Email: service@anbotek.com

Date: 10/18/2020

**1900MHz Head System Check**

**DUT: Dipole 1900 MHz; Type: D1900V2; Serial: D1900V2 - SN:5d175**

Communication System: UID 0, CW; Frequency: 1900 MHz; Duty Cycle: 1:1

Medium parameters used:  $f = 1900$  MHz;  $\sigma = 1.414$  S/m;  $\epsilon_r = 39.09$ ;  $\rho = 1000$  kg/m<sup>3</sup>

Phantom section: Flat Section

**DASY5 Configuration:**

- Probe: EX3DV4 – SN7396; ConvF(8.13, 8.13, 8.13); Calibrated: 05.06.2020;
- Sensor-Surface: 2mm (Mechanical Surface Detection)
- Electronics: DAE4 Sn387; Calibrated: 09.06.2020
- Phantom: SAM1; Type: QD000P40CD; Serial: TP:1670
- Measurement SW: DASY52, Version 52.8 (2); SEMCAD X Version 14.6.10 (7164)

**Configuration/Pin=250mW/Area Scan (71x71x1):** Interpolated grid: dx=1.500 mm, dy=1.500 mm

Maximum value of SAR (interpolated) = 12.3 W/kg

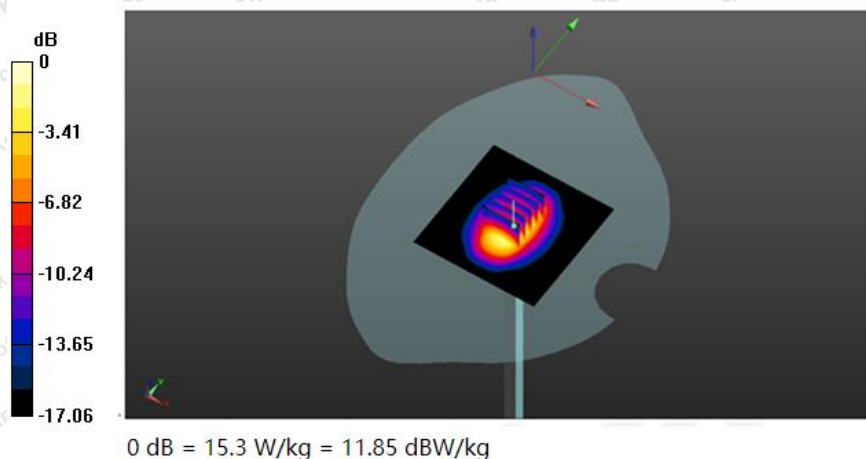
**Configuration/Pin=250mW/Zoom Scan (5x5x7)/Cube 0:** Measurement grid: dx=8mm, dy=8mm, dz=5mm

Reference Value = 89.521 V/m; Power Drift = -0.05 dB

Peak SAR (extrapolated) = 20.2 W/kg

**SAR(1 g) = 9.67 W/kg; SAR(10 g) = 5.01 W/kg**

Maximum value of SAR (measured) = 15.3 W/kg



**Shenzhen Anbotek Compliance Laboratory Limited**

Address: 1/F, Building D, Sogood Science and Technology Park, Sanwei Community, Hangcheng Street, Bao'an District, Shenzhen, Guangdong, China.

Tel:(86)755-26066440 Fax:(86)755-26014772 Email:service@anbotek.com

**2450MHz Head System Check**

**DUT: Dipole 2450 MHz; Type: D2450V2; Serial: D2450V2 - SN:910**

Communication System: UID 0, CW; Frequency: 2450 MHz; Duty Cycle: 1:1

Medium parameters used:  $f = 2450$  MHz;  $\sigma = 1.833$  S/m;  $\epsilon_r = 38.41$ ;  $\rho = 1000$  kg/m<sup>3</sup>

Phantom section: Flat Section

DASY5 Configuration:

- Probe: EX3DV4 – SN7396; ConvF(7.57, 7.57, 7.57); Calibrated: 05.06.2020;
- Sensor-Surface: 2mm (Mechanical Surface Detection)
- Electronics: DAE4 Sn387; Calibrated: 09.06.2020
- Phantom: SAM; Type: QD000P40CD; Serial: TP:1670
- Measurement SW: DASY52, Version 52.8 (2); SEMCAD X Version 14.6.10 (7164)

**Configuration/Pin=250mW/Area Scan (71x71x1):** Interpolated grid: dx=1.200 mm, dy=1.200 mm

Maximum value of SAR (interpolated) = 15.2W/kg

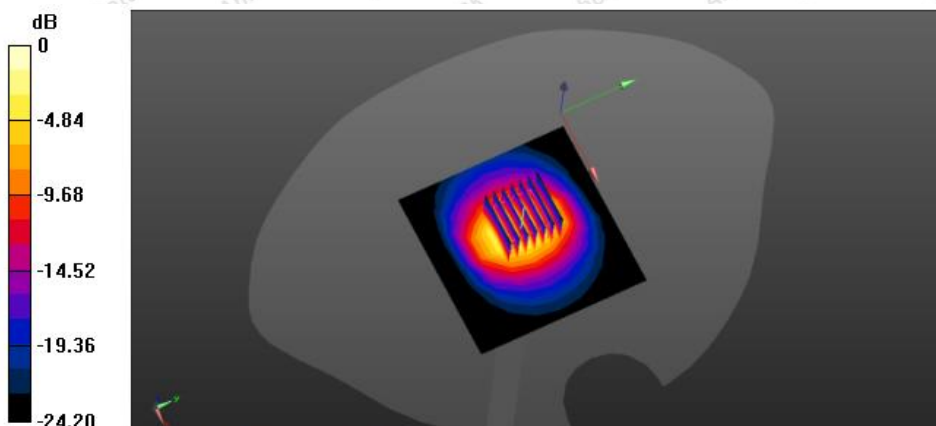
**Configuration/Pin=250mW/Zoom Scan (7x7x7)/Cube 0:** Measurement grid: dx=5mm, dy=5mm, dz=5mm

Reference Value = 91.937 V/m; Power Drift = -0.11 dB

Peak SAR (extrapolated) = 25.9 W/kg

**SAR(1 g) = 13.5 W/kg; SAR(10 g) = 6.09 W/kg**

Maximum value of SAR (measured) = 20.5 W/kg



0 dB = 20.5 W/kg = 13.12 dBW/kg

**Shenzhen Anbotek Compliance Laboratory Limited**

Address: 1/F, Building D, Sogood Science and Technology Park, Sanwei Community, Hangcheng Street, Bao'an District, Shenzhen, Guangdong, China.

Tel:(86)755-26066440 Fax:(86)755-26014772 Email:service@anbotek.com

## Appendix C. Plots of SAR Test Data

#1

### GSM850\_GSM Voice\_Left Cheek\_Ch190

Communication System: UID 0, CW; Frequency: 836.6MHz; Duty Cycle: 1:8.3

Medium parameters used (interpolated):  $f = 836.6$  MHz;  $\sigma = 0.916$  S/m;  $\epsilon_r = 40.636$ ;  $\rho = 1000$  kg/m<sup>3</sup>

Phantom section: Left Section

DASY5 Configuration:

- Probe: EX3DV4 – SN7396; ConvF(9.71, 9.71, 9.71); Calibrated: 05.06.2020;
- Sensor-Surface: 2mm (Mechanical Surface Detection)
- Electronics: DAE4 Sn387; Calibrated: 09.06.2020
- Phantom: SAM1; Type: QD00P40CD; Serial: TP:1670
- Measurement SW: DASY52, Version 52.8 (2); SEMCAD X Version 14.6.10 (7164)

**Area Scan (7x11x1):** Interpolated grid: dx=15 mm, dy=15 mm

Maximum value of SAR (interpolated) = 0.143 W/kg

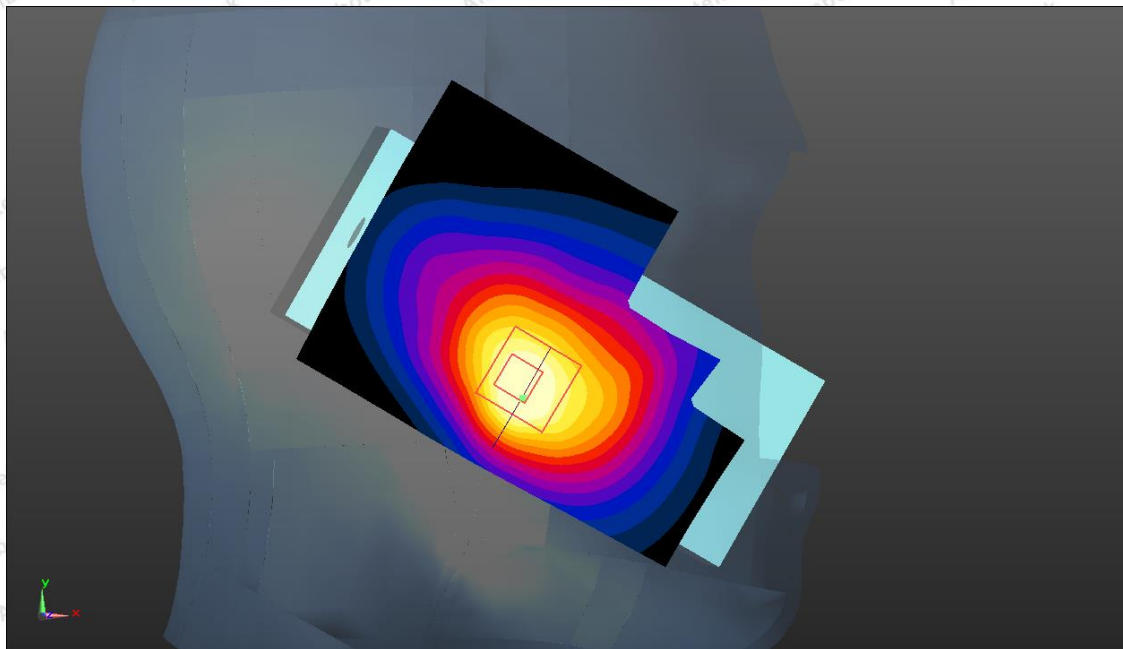
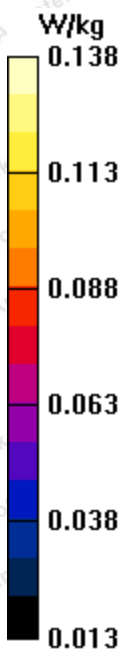
**Zoom Scan (5x5x7)/Cube 0:** Measurement grid: dx=8mm, dy=8mm, dz=5mm

Reference Value = 5.043 V/m; Power Drift = 0.09 dB

Peak SAR (extrapolated) = 0.170 W/kg

**SAR(1 g) = 0.127 W/kg; SAR(10 g) = 0.093 W/kg**

Maximum value of SAR (measured) = 0.138 W/kg



#2

**PCS1900\_GSM Voice\_Right Cheek\_Ch512**

Communication System: UID 0, CW; Frequency: 1850.2 MHz; Duty Cycle: 1:8.3

Medium parameters used:  $f = 1850.2$  MHz;  $\sigma = 1.393$  S/m;  $\epsilon_r = 40.532$ ;  $\rho = 1000$  kg/m<sup>3</sup>

Phantom section: Right Section

DASY5 Configuration:

- Probe: EX3DV4 – SN7396; ConvF(8.13, 8.13, 8.13); Calibrated: 05.06.2020;
- Sensor-Surface: 2mm (Mechanical Surface Detection)
- Electronics: DAE4 Sn387; Calibrated: 09.06.2020
- Phantom: SAM1; Type: QD000P40CD; Serial: TP:1670
- Measurement SW: DASY52, Version 52.8 (2); SEMCAD X Version 14.6.10 (7164)

**Area Scan (7x11x1):** Interpolated grid: dx=15 mm, dy=15 mm

Maximum value of SAR (interpolated) = 0.0308 W/kg

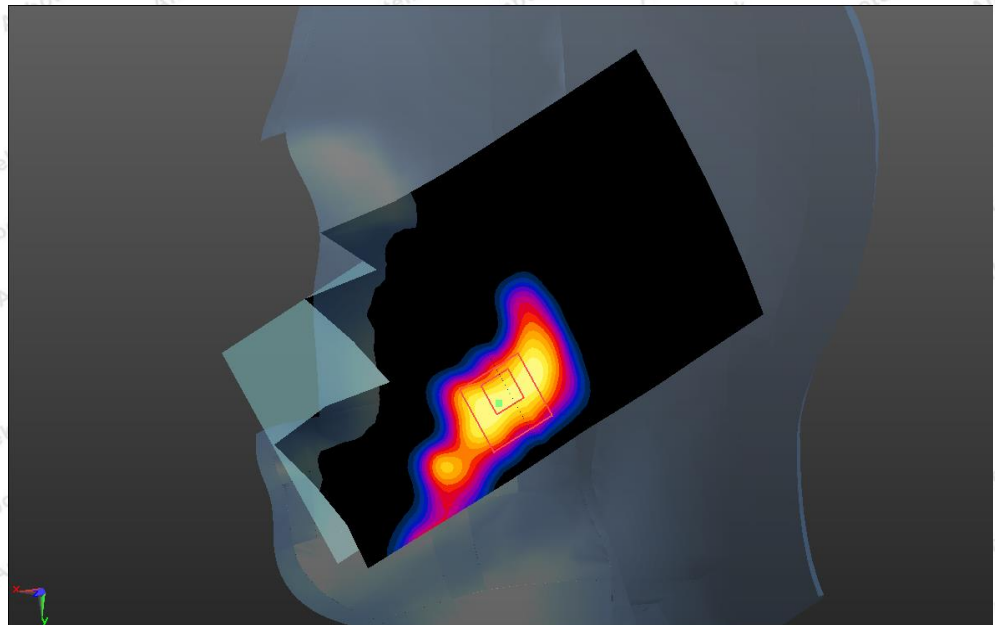
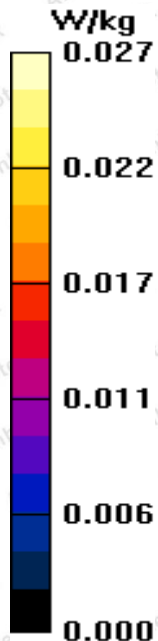
**Zoom Scan (5x5x7)/Cube 0:** Measurement grid: dx=8mm, dy=8mm, dz=5mm

Reference Value = 1.351 V/m; Power Drift = 0.02 dB

Peak SAR (extrapolated) = 0.0330 W/kg

**SAR(1 g) = 0.024 W/kg; SAR(10 g) = 0.015 W/kg**

Maximum value of SAR (measured) = 0.0275 W/kg





#3

**WCDMA Band 2\_RMC\_Right Cheek\_Ch9538**

Communication System: UID 0, CW; Frequency: 1907.6 MHz; Duty Cycle: 1:1

Medium parameters used:  $f = 1907.6\text{M Hz}$ ;  $\sigma = 1.427\text{ S/m}$ ;  $\epsilon_r = 39.038$ ;  $\rho = 1000\text{ kg/m}^3$

Phantom section: Right Section

DASY5 Configuration:

- Probe: EX3DV4 – SN7396; ConvF(8.13, 8.13, 8.13); Calibrated: 05.06.2020;
- Sensor-Surface: 2mm (Mechanical Surface Detection)
- Electronics: DAE4 Sn387; Calibrated: 09.06.2020
- Phantom: SAM1; Type: QD000P40CD; Serial: TP:1670
- Measurement SW: DASY52, Version 52.8 (2); SEMCAD X Version 14.6.10 (7164)

**Area Scan (7x11x1):** Interpolated grid:  $dx=15\text{ mm}$ ,  $dy=15\text{ mm}$

Maximum value of SAR (interpolated) = 0.0547 W/kg

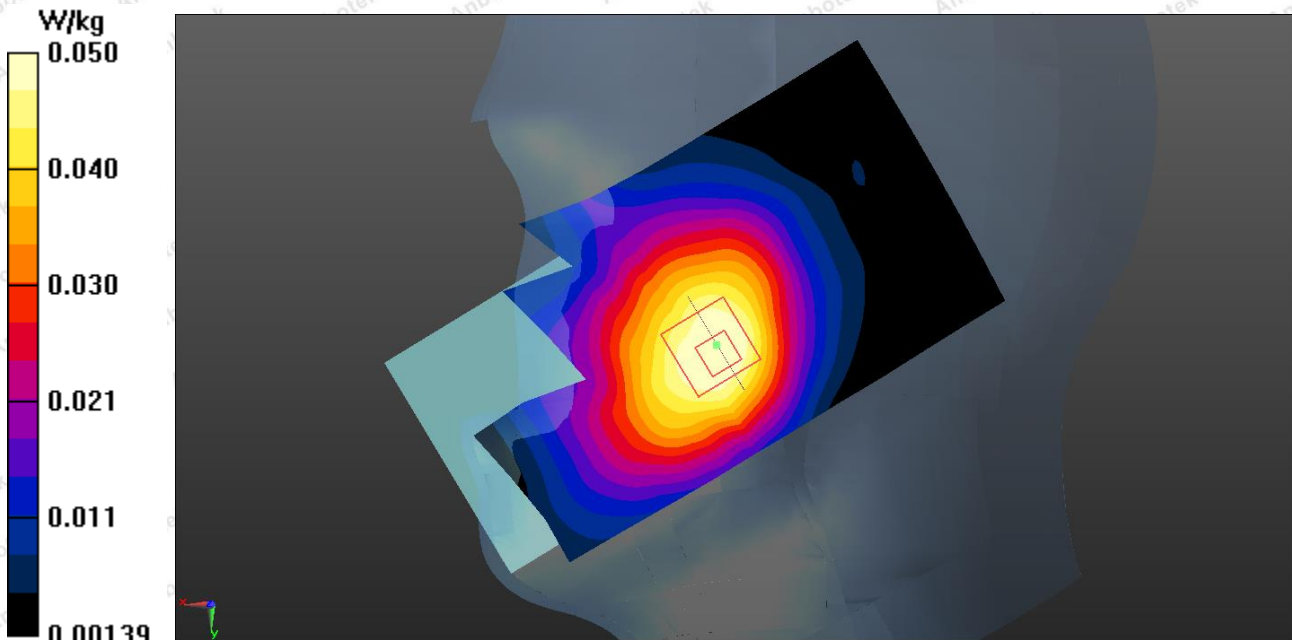
**Zoom Scan (5x5x7)/Cube 0:** Measurement grid:  $dx=8\text{mm}$ ,  $dy=8\text{mm}$ ,  $dz=5\text{mm}$

Reference Value = 2.889 V/m; Power Drift = 0.09 dB

Peak SAR (extrapolated) = 0.0640 W/kg

**SAR(1 g) = 0.043 W/kg; SAR(10 g) = 0.027 W/kg**

Maximum value of SAR (measured) = 0.0496 W/kg



#4

**WCDMA Band 5\_RMC\_Left Cheek\_Ch4183**

Communication System: UID 0, CW; Frequency: 836.6 MHz; Duty Cycle: 1:1

Medium parameters used (interpolated):  $f = 836.6$  MHz;  $\sigma = 0.916$  S/m;  $\epsilon_r = 40.638$ ;  $\rho = 1000$  kg/m<sup>3</sup>

Phantom section: Left Section

DASY5 Configuration:

- Probe: EX3DV4 – SN7396; ConvF(9.71, 9.71, 9.71); Calibrated: 05.06.2020;
- Sensor-Surface: 2mm (Mechanical Surface Detection)
- Electronics: DAE4 Sn387; Calibrated: 09.06.2020
- Phantom: SAM1; Type: QD000P40CD; Serial: TP:1670
- Measurement SW: DASY52, Version 52.8 (2); SEMCAD X Version 14.6.10 (7164)

**Area Scan (7x11x1):** Interpolated grid: dx=15 mm, dy=15 mm

Maximum value of SAR (interpolated) = 0.448 W/kg

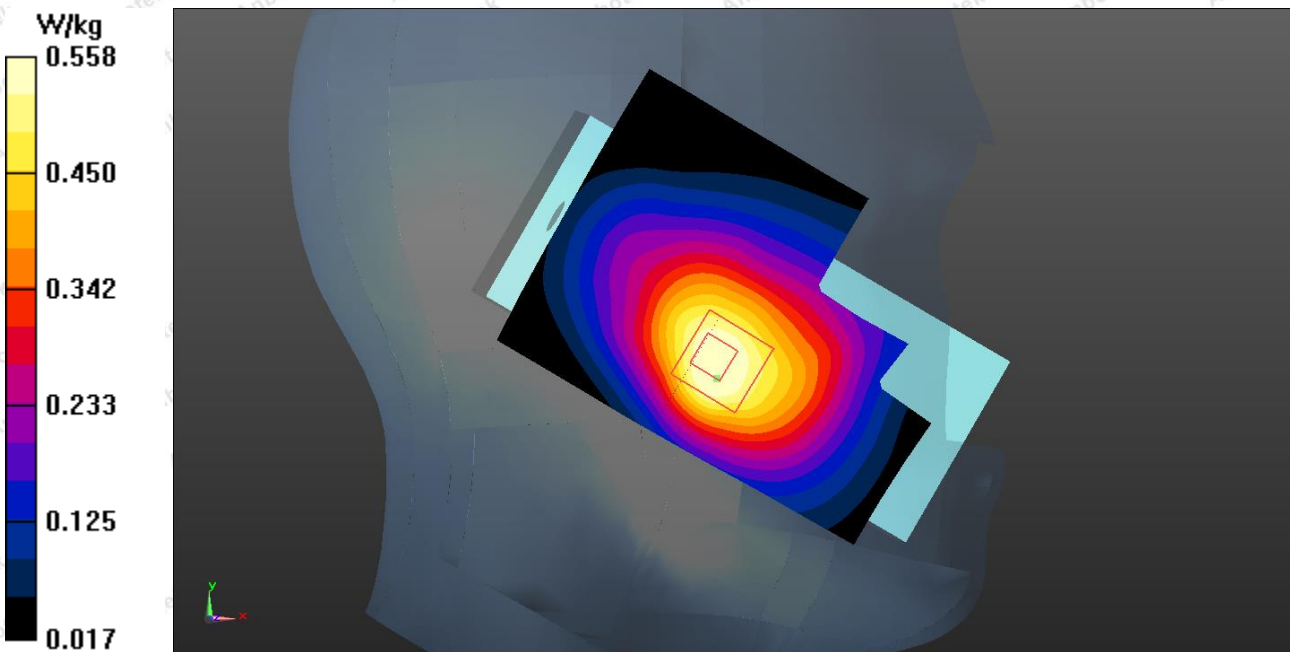
**Zoom Scan (5x5x7)/Cube 0:** Measurement grid: dx=8mm, dy=8mm, dz=5mm

Reference Value = 6.387 V/m; Power Drift = 0.03 dB

Peak SAR (extrapolated) = 0.638 W/kg

**SAR(1 g) = 0.418 W/kg; SAR(10 g) = 0.282 W/kg**

Maximum value of SAR (measured) = 0.558 W/kg



#5

**WiFi2.4GHz\_802.11b\_Right Tilt\_Ch6**

Communication System: UID 0, CW; Frequency: 2437 MHz; Duty Cycle: 1:1

Medium parameters used:  $f = 2437$  MHz;  $\sigma = 1.847$  S/m;  $\epsilon_r = 38.372$ ;  $\rho = 1000$  kg/m<sup>3</sup>

Phantom section: Right Section

DASY5 Configuration:

- Probe: EX3DV4 – SN7396; ConvF(7.57, 7.57, 7.57); Calibrated: 05.06.2019;
- Sensor-Surface: 2mm (Mechanical Surface Detection)
- Electronics: DAE4 Sn1549; Calibrated: 03.19.2019
- Phantom: SAM; Type: QD000P40CD; Serial: TP:1670
- Measurement SW: DASY52, Version 52.8 (2); SEMCAD X Version 14.6.10 (7164)

**Area Scan (8x17x1):** Interpolated grid: dx=10 mm, dy=10 mm

Maximum value of SAR (interpolated) = 0.882 W/kg

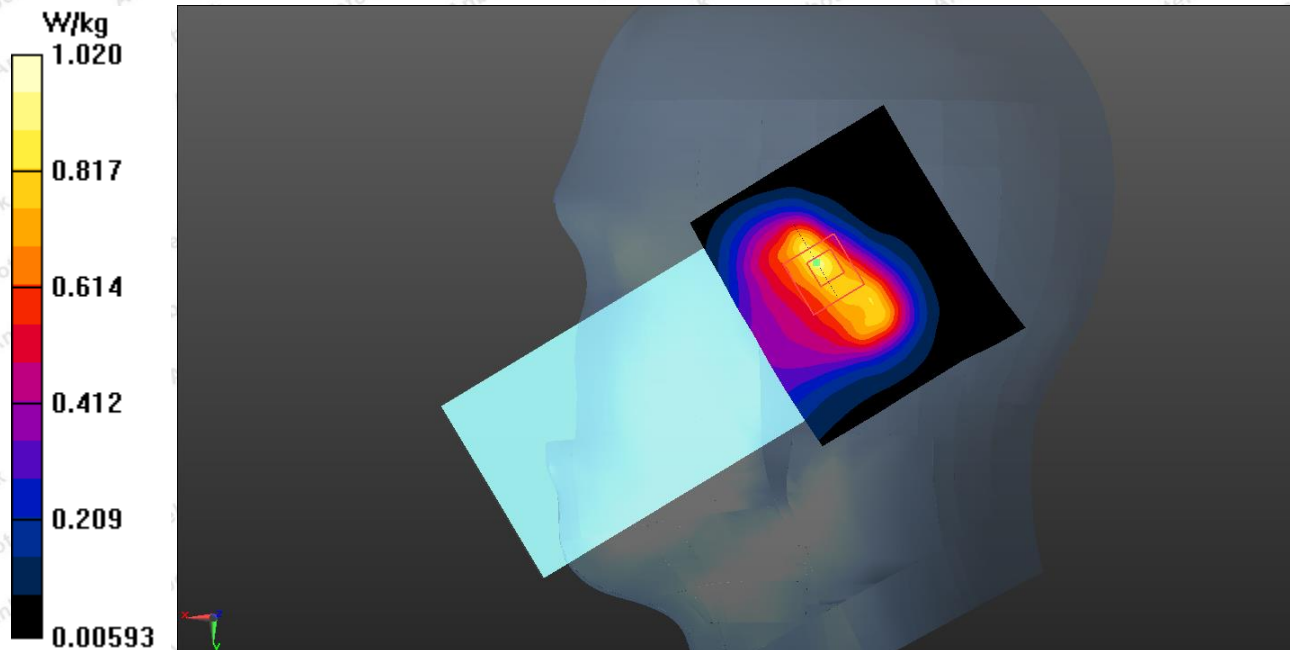
**Zoom Scan (7x7x7)/Cube 0:** Measurement grid: dx=5mm, dy=5mm, dz=5mm

Reference Value = 17.70 V/m; Power Drift = -0.02 dB

Peak SAR (extrapolated) = 1.69 W/kg

**SAR(1 g) = 0.776 W/kg; SAR(10 g) = 0.370 W/kg**

Maximum value of SAR (measured) = 1.02 W/kg



#6

**GSM850\_GPRS\_1TX\_Body Back\_Ch128**

Communication System: UID 0, GPRS (1 Tx slots) (0); Frequency: 824.2 MHz; Duty Cycle: 1:8.3

Medium parameters used (interpolated):  $f = 824.2$  MHz;  $\sigma = 0.916$  S/m;  $\epsilon_r = 40.429$ ;  $\rho = 1000$  kg/m<sup>3</sup>

Phantom section: Flat Section

DASY5 Configuration:

- Probe: EX3DV4 – SN7396; ConvF(9.71, 9.71, 9.71); Calibrated: 05.06.2020;
- Sensor-Surface: 2mm (Mechanical Surface Detection)
- Electronics: DAE4 Sn387; Calibrated: 09.06.2020
- Phantom: SAM; Type: QD000P40CD; Serial: TP:1670
- Measurement SW: DASY52, Version 52.8 (2); SEMCAD X Version 14.6.10 (7164)

**Area Scan (7x11x1):** Interpolated grid: dx=15 mm, dy=15 mm

Maximum value of SAR (interpolated) = 0.511 W/kg

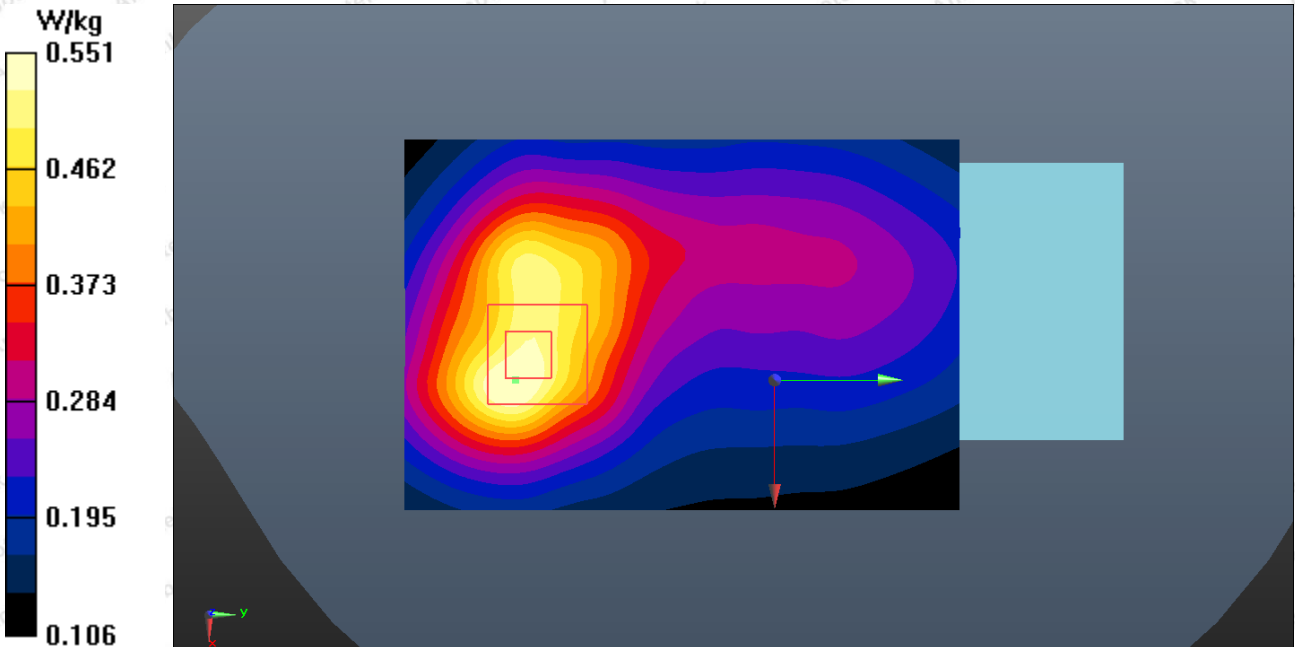
**Zoom Scan (5x5x7)/Cube 0:** Measurement grid: dx=8mm, dy=8mm, dz=5mm

Reference Value = 23.82 V/m; Power Drift = 0.01 dB

Peak SAR (extrapolated) = 0.691 W/kg

**SAR(1 g) = 0.462 W/kg; SAR(10 g) = 0.299 W/kg**

Maximum value of SAR (measured) = 0.551 W/kg



#7

**PCS1900\_GPRS\_1TX\_Body Back\_Ch661**

Communication System: UID 0, GPRS (1 Tx slots) (0); Frequency: 1880 MHz; Duty Cycle: 1:8.3

Medium parameters used:  $f = 1880 \text{ MHz}$ ;  $\sigma = 1.401 \text{ S/m}$ ;  $\epsilon_r = 38.957$ ;  $\rho = 1000 \text{ kg/m}^3$

Phantom section: Flat Section

DASY5 Configuration:

- Probe: EX3DV4 – SN7396; ConvF(8.13, 8.13, 8.13); Calibrated: 05.06.2020;
- Sensor-Surface: 2mm (Mechanical Surface Detection)
- Electronics: DAE4 Sn387; Calibrated: 09.06.2020
- Phantom: SAM; Type: QD000P40CD; Serial: TP:1670
- Measurement SW: DASY52, Version 52.8 (2); SEMCAD X Version 14.6.10 (7164)

**Area Scan (7x11x1):** Interpolated grid:  $dx=15 \text{ mm}$ ,  $dy=15 \text{ mm}$

Maximum value of SAR (interpolated) = 0.862 W/kg

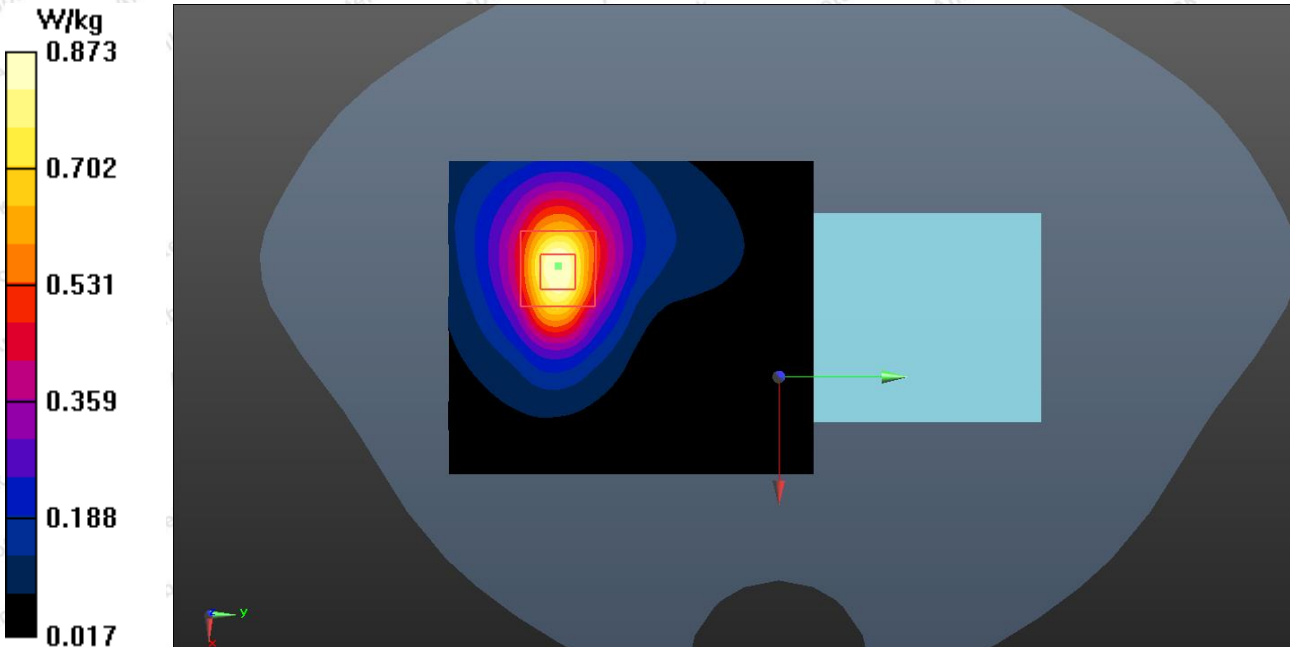
**Zoom Scan (5x5x7)/Cube 0:** Measurement grid:  $dx=8\text{mm}$ ,  $dy=8\text{mm}$ ,  $dz=5\text{mm}$

Reference Value = 7.644 V/m; Power Drift = 0.09 dB

Peak SAR (extrapolated) = 1.38 W/kg

**SAR(1 g) = 0.664 W/kg; SAR(10 g) = 0.385 W/kg**

Maximum value of SAR (measured) = 0.873 W/kg



#8

**WCDMA 1900\_RMC 12.2K\_Body Bottom\_Ch9400**

Communication System: UID 0, Generic WCDMA (0); Frequency: 1880 MHz; Duty Cycle: 1:1

Medium parameters used:  $f = 1880 \text{ MHz}$ ;  $\sigma = 1.396 \text{ S/m}$ ;  $\epsilon_r = 39.166$ ;  $\rho = 1000 \text{ kg/m}^3$

Phantom section: Flat Section

DASY5 Configuration:

- Probe: EX3DV4 – SN7396; ConvF(8.13, 8.13, 8.13); Calibrated: 05.06.2020;
- Sensor-Surface: 2mm (Mechanical Surface Detection)
- Electronics: DAE4 Sn387; Calibrated: 09.06.2020
- Phantom: SAM; Type: QD000P40CD; Serial: TP:1670
- Measurement SW: DASY52, Version 52.8 (2); SEMCAD X Version 14.6.10 (7164)

**Area Scan (7x11x1):** Interpolated grid:  $dx=15 \text{ mm}$ ,  $dy=15 \text{ mm}$

Maximum value of SAR (interpolated) = 0.846 W/kg

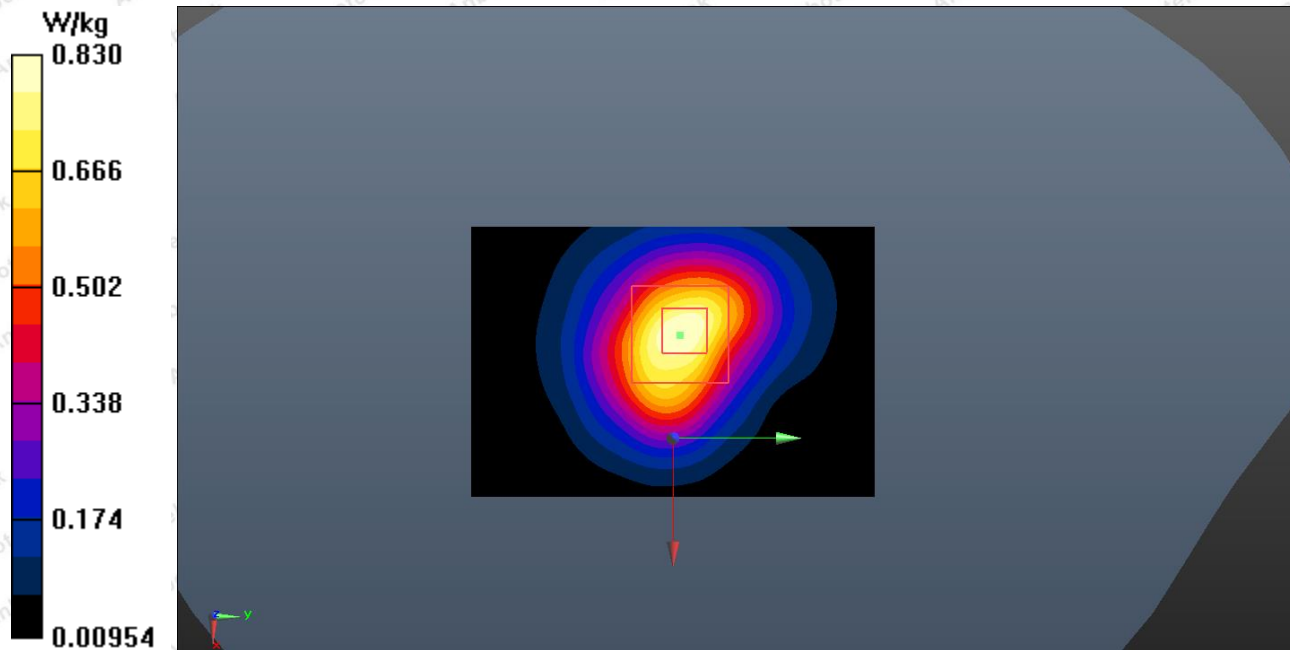
**Zoom Scan (5x5x7)/Cube 0:** Measurement grid:  $dx=8\text{mm}$ ,  $dy=8\text{mm}$ ,  $dz=5\text{mm}$

Reference Value = 22.04 V/m; Power Drift = 0.09 dB

Peak SAR (extrapolated) = 1.16 W/kg

**SAR(1 g) = 0.751 W/kg; SAR(10 g) = 0.442 W/kg**

Maximum value of SAR (measured) = 0.830 W/kg



#9

**WCDMA 850\_RMC 12.2K\_Body Back\_Ch4183**

Communication System: UID 0, Generic WCDMA (0); Frequency: 836.6 MHz; Duty Cycle: 1:1

Medium parameters used (interpolated):  $f = 836.6$  MHz;  $\sigma = 0.916$  S/m;  $\epsilon_r = 40.638$ ;  $\rho = 1000$  kg/m<sup>3</sup>

Phantom section: Flat Section

DASY5 Configuration:

- Probe: EX3DV4 – SN7396; ConvF(9.71, 9.71, 9.71); Calibrated: 05.06.2020;
- Sensor-Surface: 2mm (Mechanical Surface Detection)
- Electronics: DAE4 Sn387; Calibrated: 09.06.2020
- Phantom: SAM; Type: QD000P40CD; Serial: TP:1670
- Measurement SW: DASY52, Version 52.8 (2); SEMCAD X Version 14.6.10 (7164)

**Area Scan (7x11x1):** Interpolated grid: dx=15 mm, dy=15 mm

Maximum value of SAR (interpolated) = 0.563 W/kg

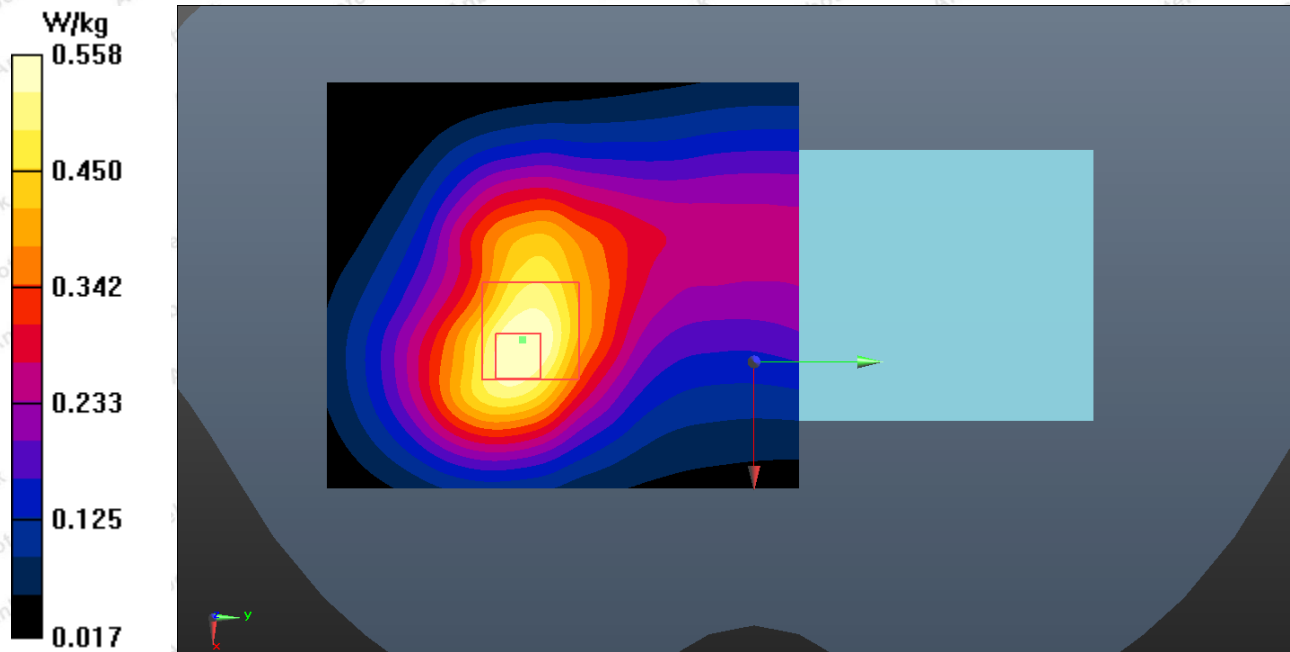
**Zoom Scan (5x5x7)/Cube 0:** Measurement grid: dx=8mm, dy=8mm, dz=5mm

Reference Value = 15.65 V/m; Power Drift = -0.14 dB

Peak SAR (extrapolated) = 0.694 W/kg

**SAR(1 g) = 0.418 W/kg; SAR(10 g) = 0.253 W/kg**

Maximum value of SAR (measured) = 0.558 W/kg



**WIFI 2.4G\_Body Top\_Ch6**

Communication System: UID 0, CW; Frequency: 2437 MHz; Duty Cycle: 1:1

Medium parameters used:  $f = 2437 \text{ MHz}$ ;  $\sigma = 1.845 \text{ S/m}$ ;  $\epsilon_r = 37.993$ ;  $\rho = 1000 \text{ kg/m}^3$

Phantom section: Flat Section

DASY5 Configuration:

- Probe: EX3DV4 – SN7396; ConvF(7.57, 7.57, 7.57); Calibrated: 05.06.2020;
- Sensor-Surface: 2mm (Mechanical Surface Detection)
- Electronics: DAE4 Sn387; Calibrated: 09.06.2020
- Phantom: SAM; Type: QD000P40CD; Serial: TP:1670
- Measurement SW: DASY52, Version 52.8 (2); SEMCAD X Version 14.6.10 (7164)

**Area Scan (8x17x1):** Interpolated grid:  $dx=10 \text{ mm}$ ,  $dy=10 \text{ mm}$

Maximum value of SAR (interpolated) = 0.751 W/kg

**Zoom Scan (7x7x7)/Cube 0:** Measurement grid:  $dx=5\text{mm}$ ,  $dy=5\text{mm}$ ,  $dz=5\text{mm}$

Reference Value = 15.46 V/m; Power Drift = 0.07 dB

Peak SAR (extrapolated) = 1.14 W/kg

**SAR(1 g) = 0.588 W/kg; SAR(10 g) = 0.306 W/kg**

Maximum value of SAR (measured) = 0.737 W/kg

