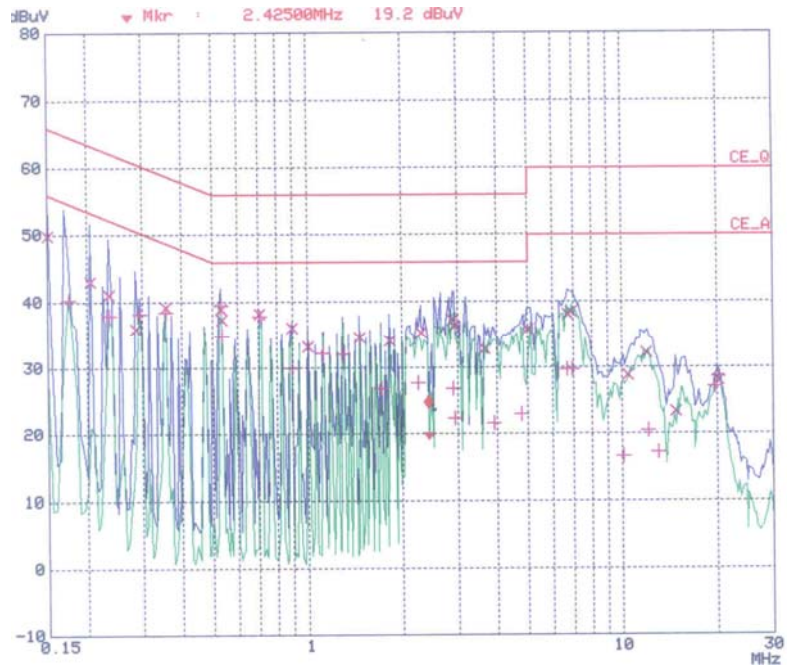


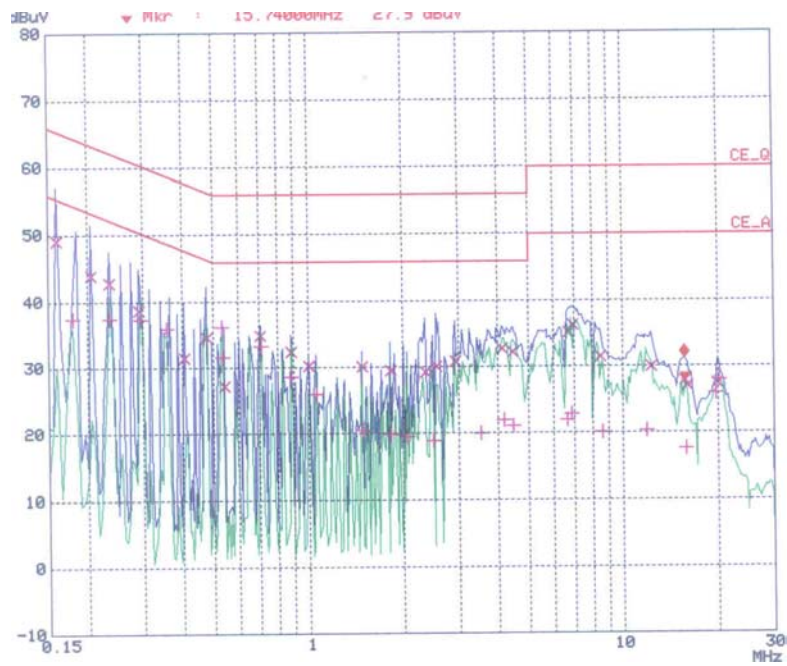
**APPENDIX B**  
**: PLOTS OF CONDUCTED EMISSIONS**

- Used AC/DC Adapter: 0218B1260 (LI SHIN)

■ PC Mode: 1280\*768 / 60Hz

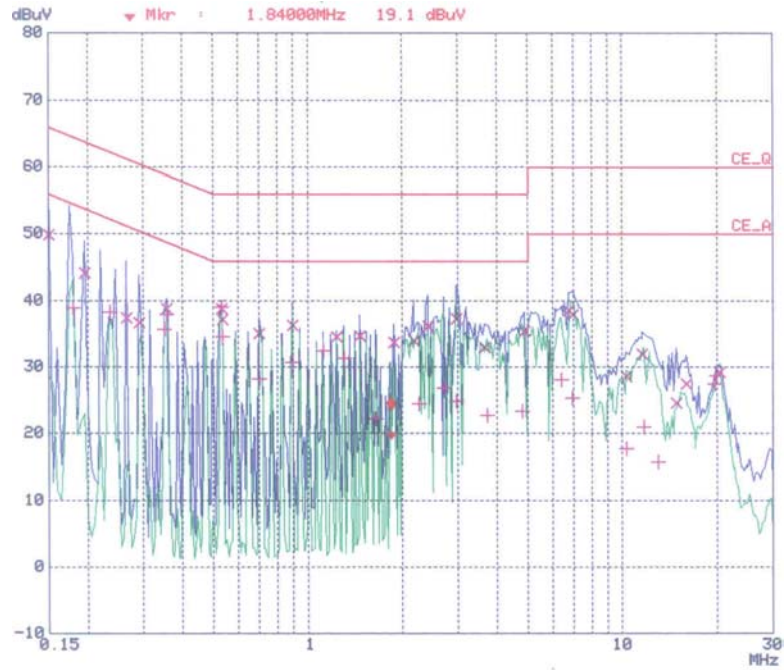


< Hot line >

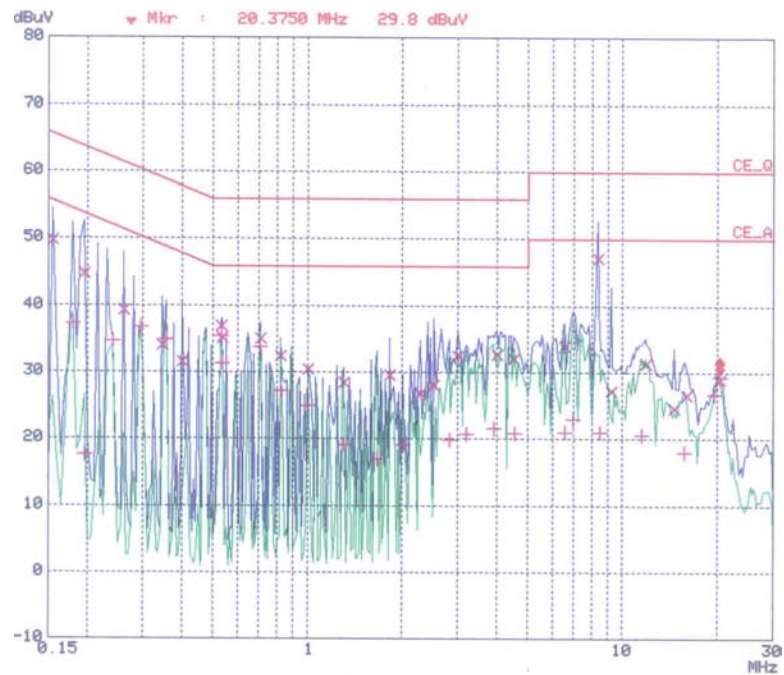


< Neutral line >

■ PC Mode: 1024\*768 / 75Hz

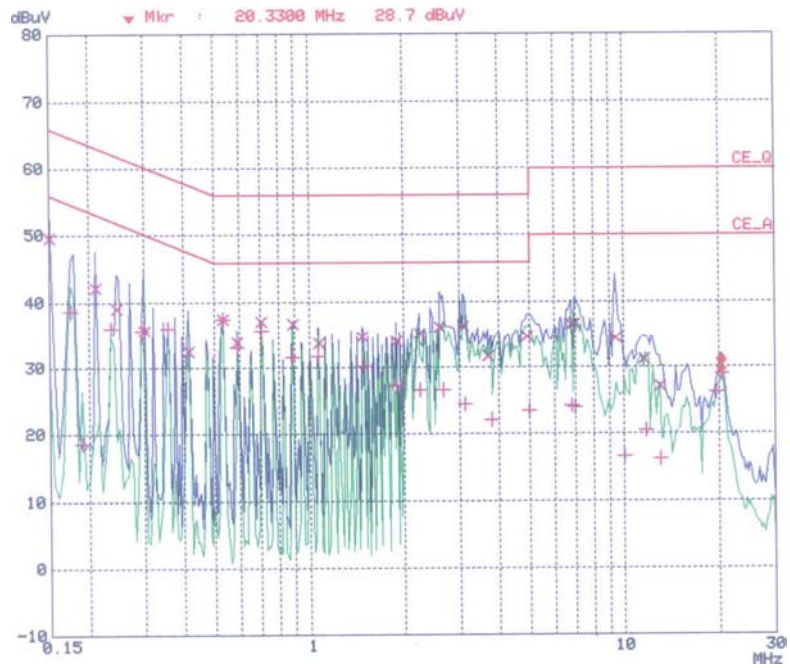


< Hot line >

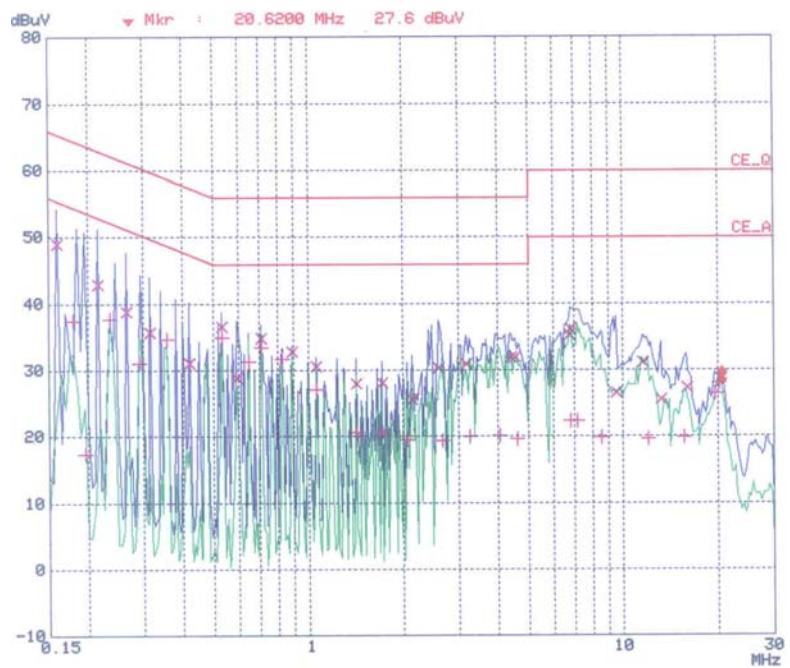


< Neutral line >

■ PC Mode: 800\*600 / 75Hz

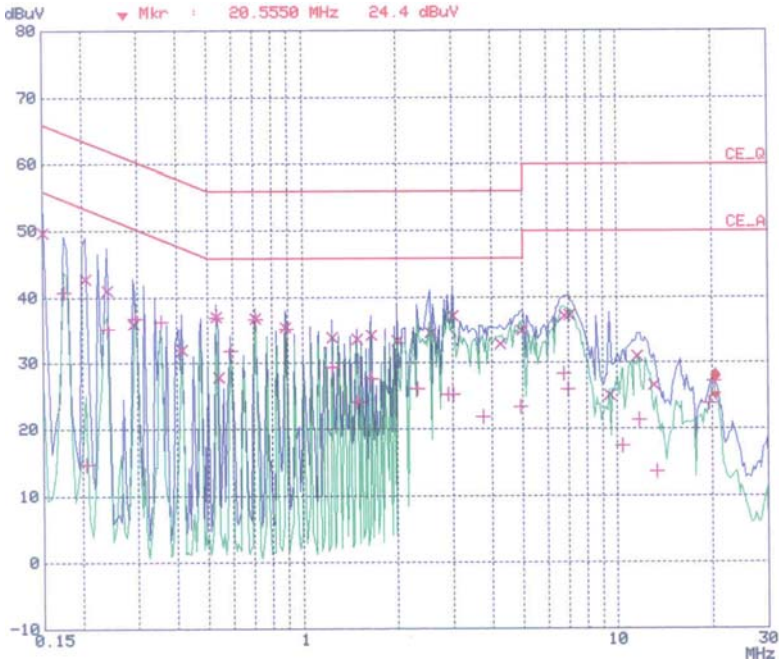


< Hot line >

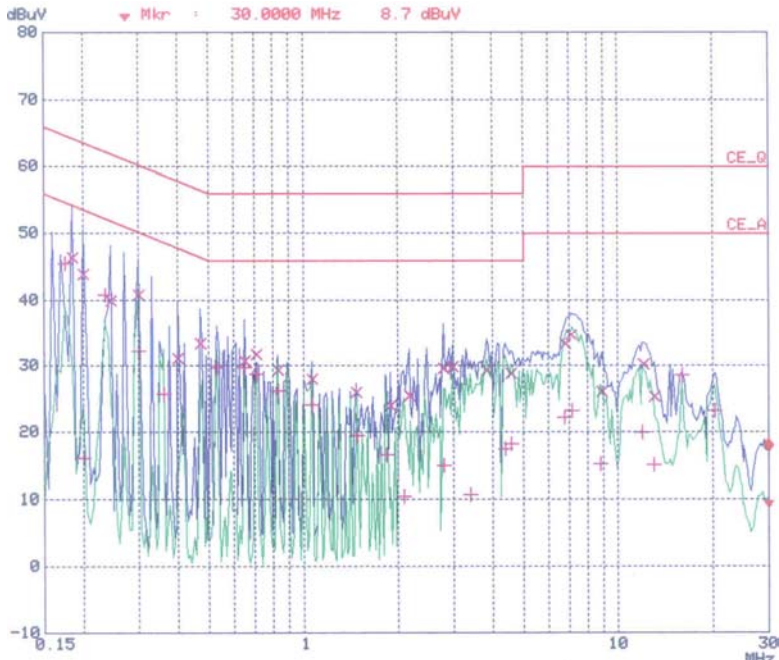


< Neutral line >

■ PC Mode: 640\*480 / 75Hz

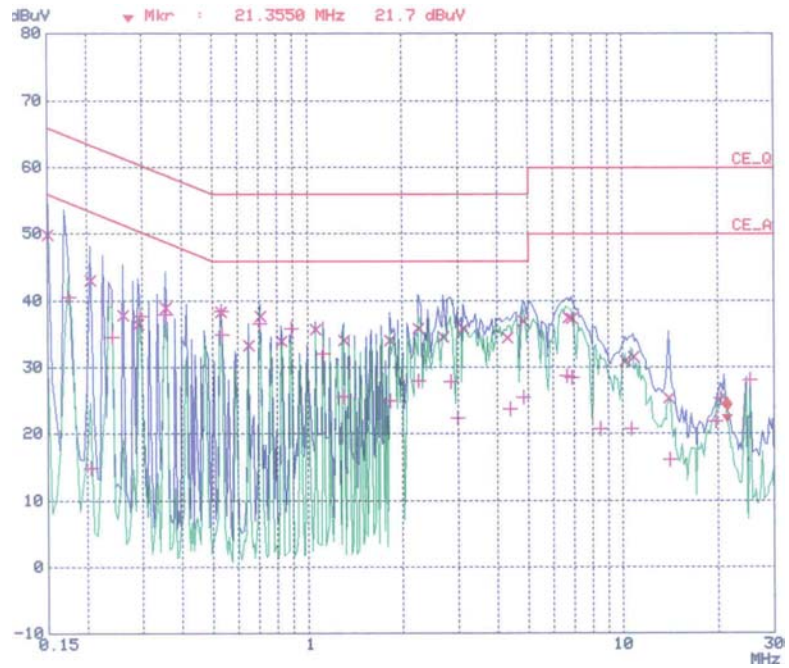


< Hot line >

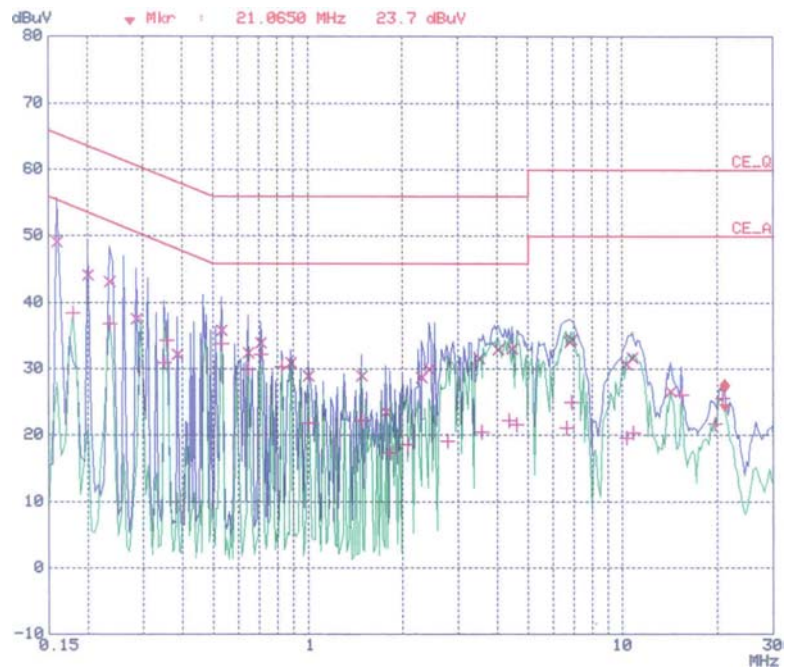


< Neutral line >

■ TV Mode

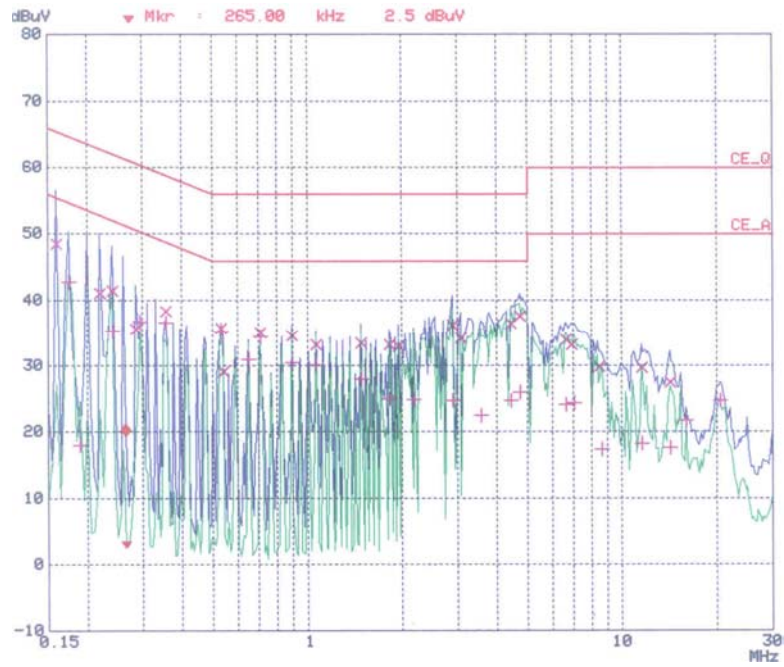


< Hot line >

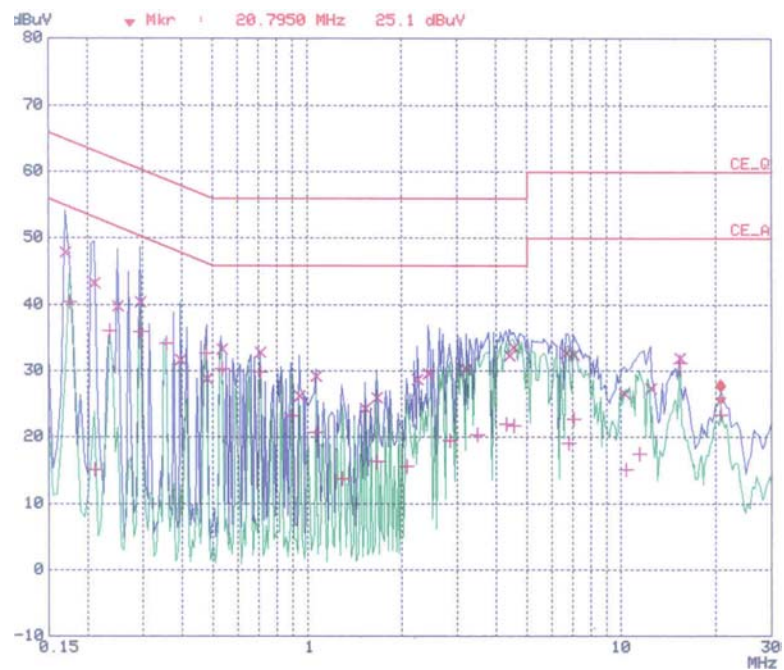


< Neutral line >

■ DVD Mode



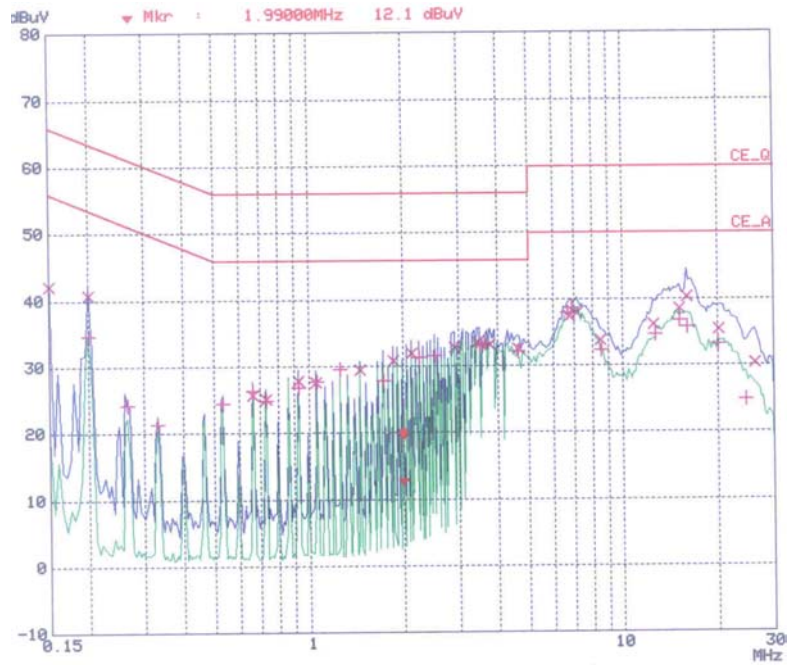
< Hot line >



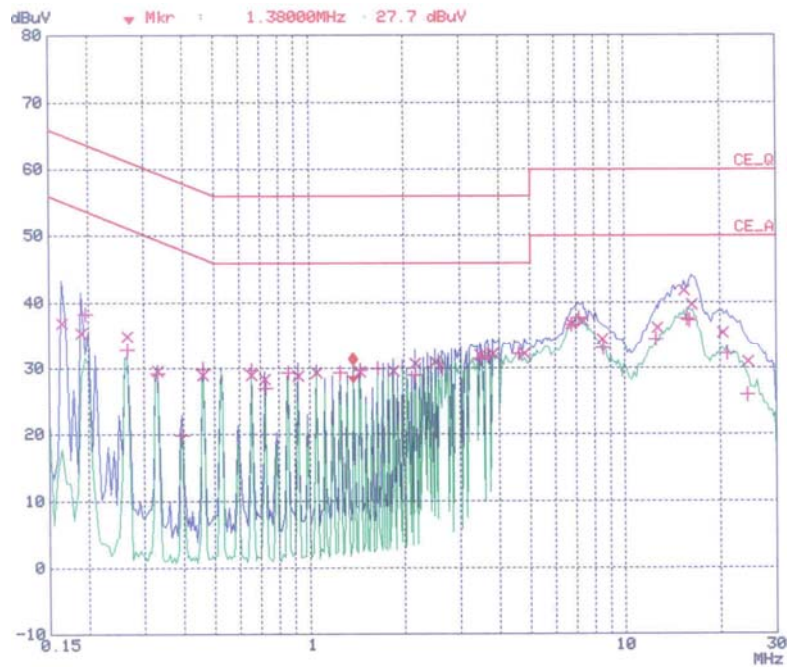
< Neutral line >

- Used AC/DC Adapter: SAD6012SE (H&E)

■ PC Mode: 1280\*768 / 60Hz



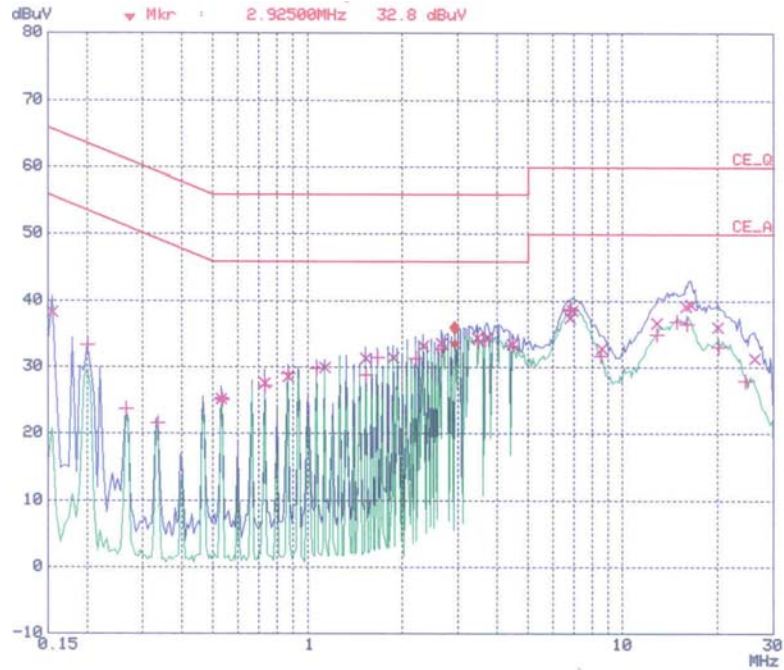
< Hot line >



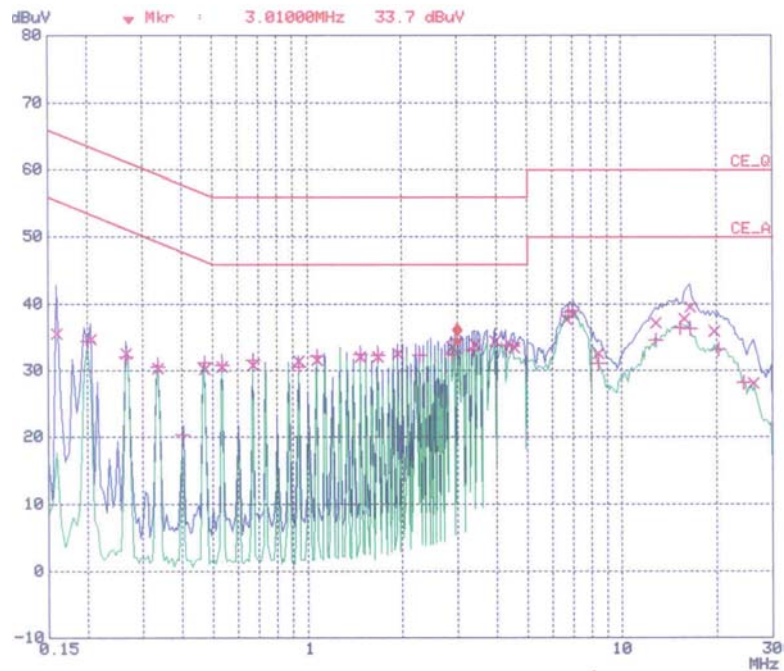
< Neutral line >



■ PC Mode: 1024\*768 / 75Hz

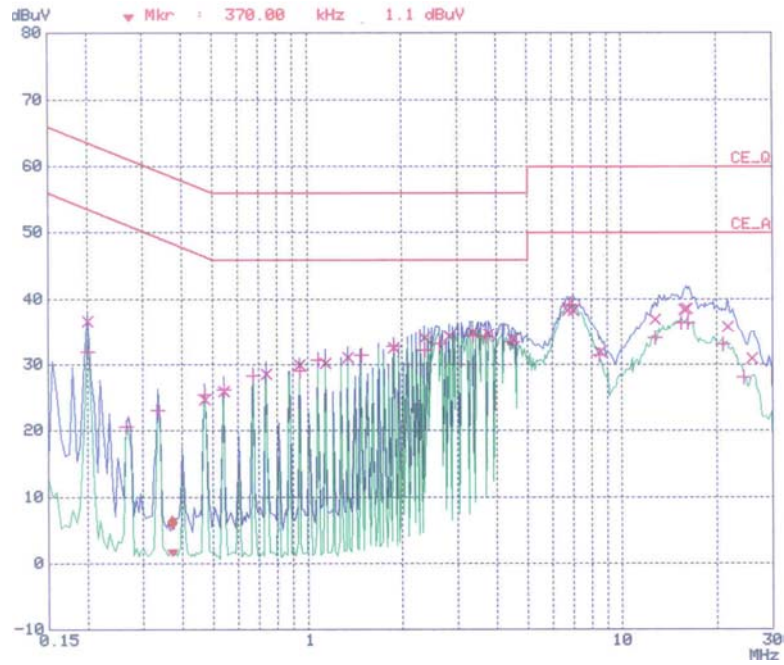


< Hot line >

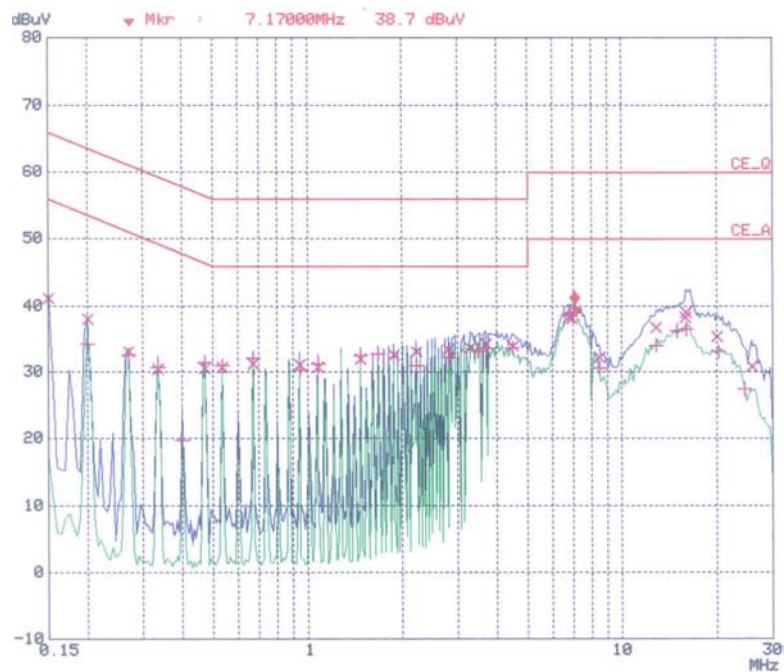


< Neutral line >

■ PC Mode: 800\*600 / 75Hz

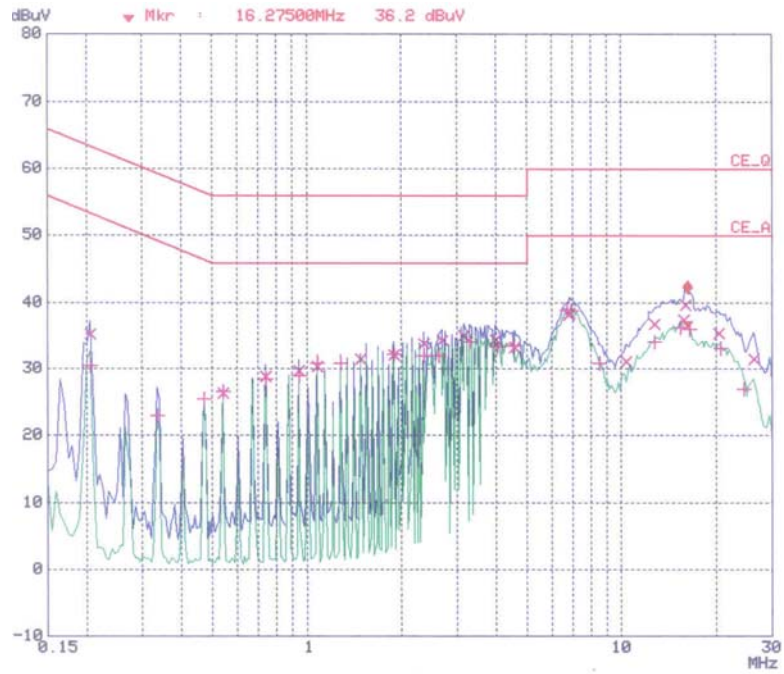


< Hot line >

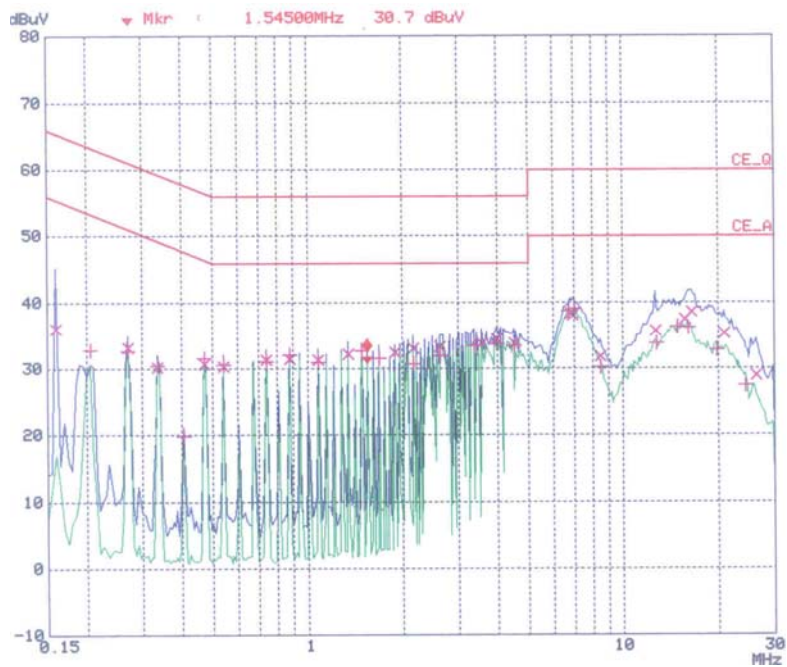


< Neutral line >

■ PC Mode: 640\*480 / 75Hz

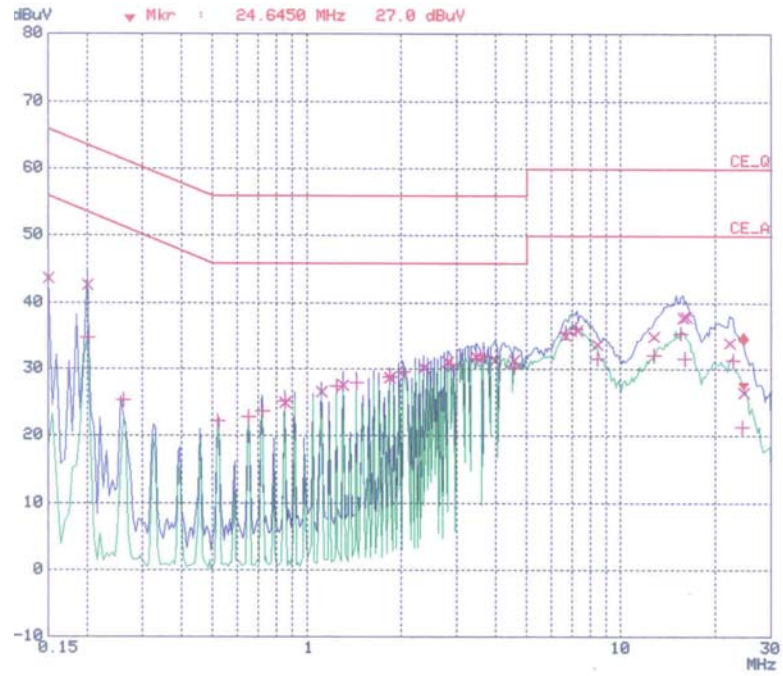


< Hot line >

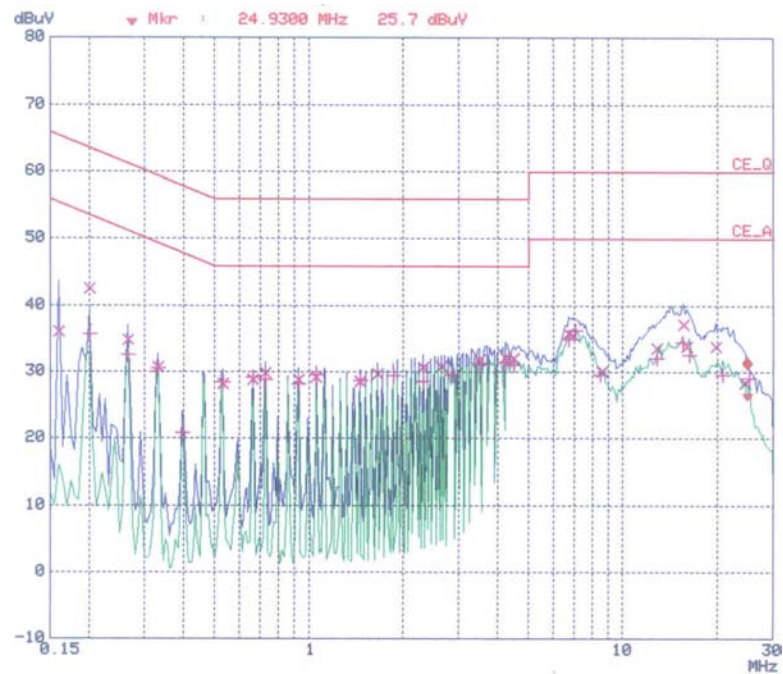


< Neutral line >

■ TV Mode

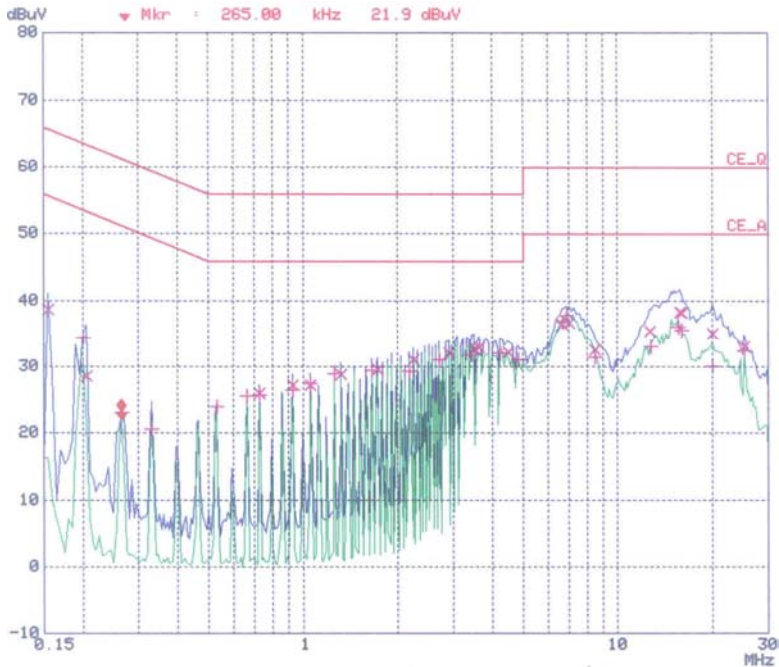


< Hot line >

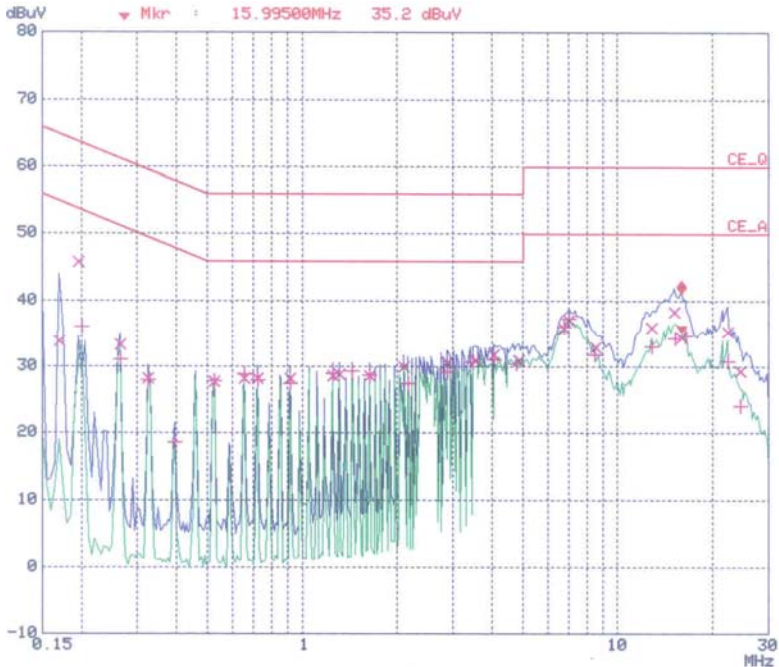


< Neutral line >

■ DVD Mode



< Hot line >



< Neutral line >