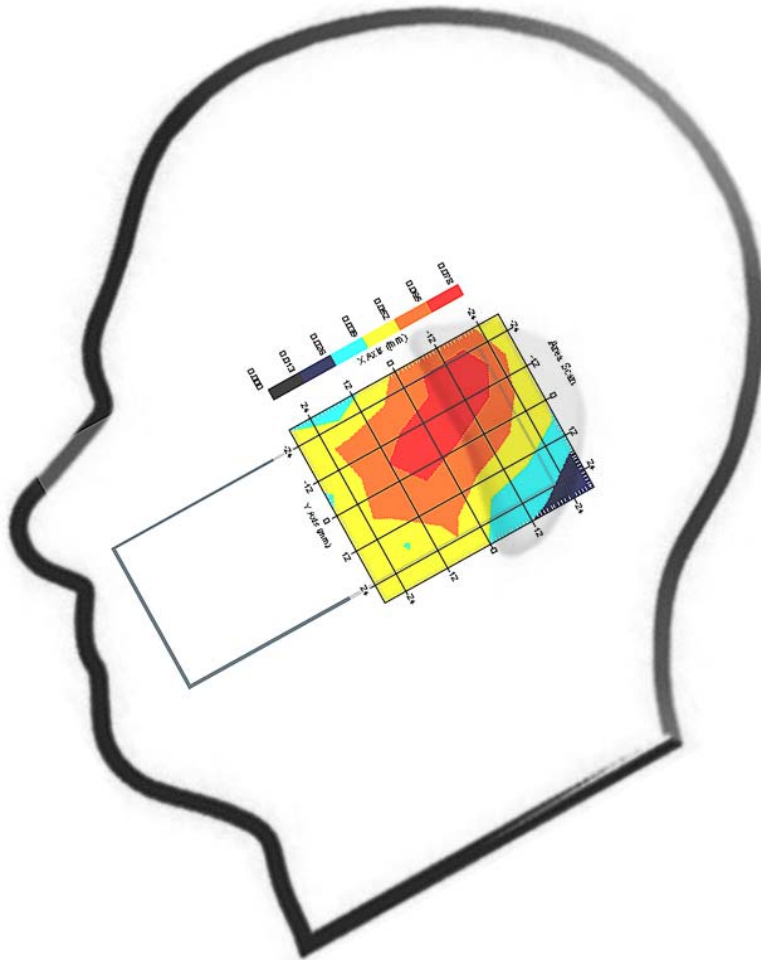


Measurement Data

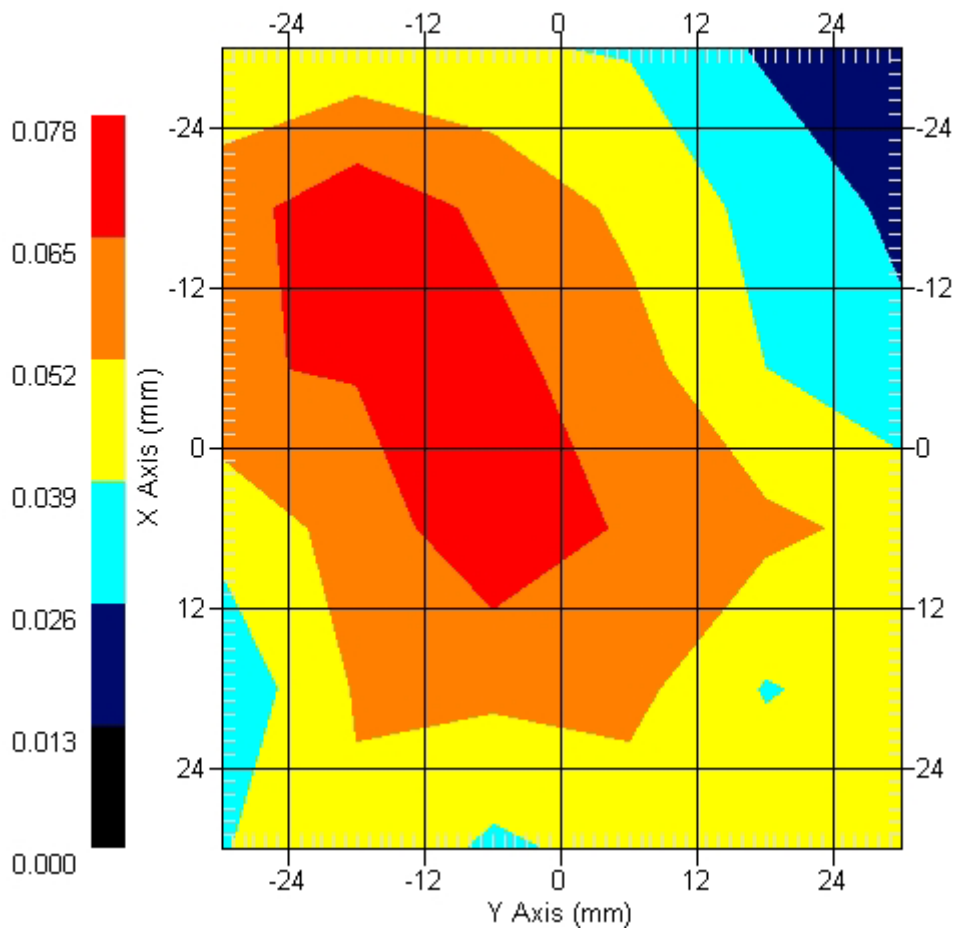
Crest Factor : 1
 Tissue Temp. : 23.60 °C
 Ambient Temp. : 24.20 °C
 Area Scan : 6x6x1 : Measurement x=12mm, y=12mm, z=4mm
 Zoom Scan : 7x5x7 : Measurement x=5mm, y=5mm, z=5mm
 Power Drift-Start : 0.069 W/kg
 Power Drift-Finish: 0.066 W/kg
 Power Drift (%) : -4.316

DUT Position : 15° Tilt
 Channel : 6



1 gram SAR value : 0.079 W/kg
 10 gram SAR value : 0.054 W/kg
 Area Scan Peak SAR : 0.075 W/kg
 Zoom Scan Peak SAR : 0.120 W/kg

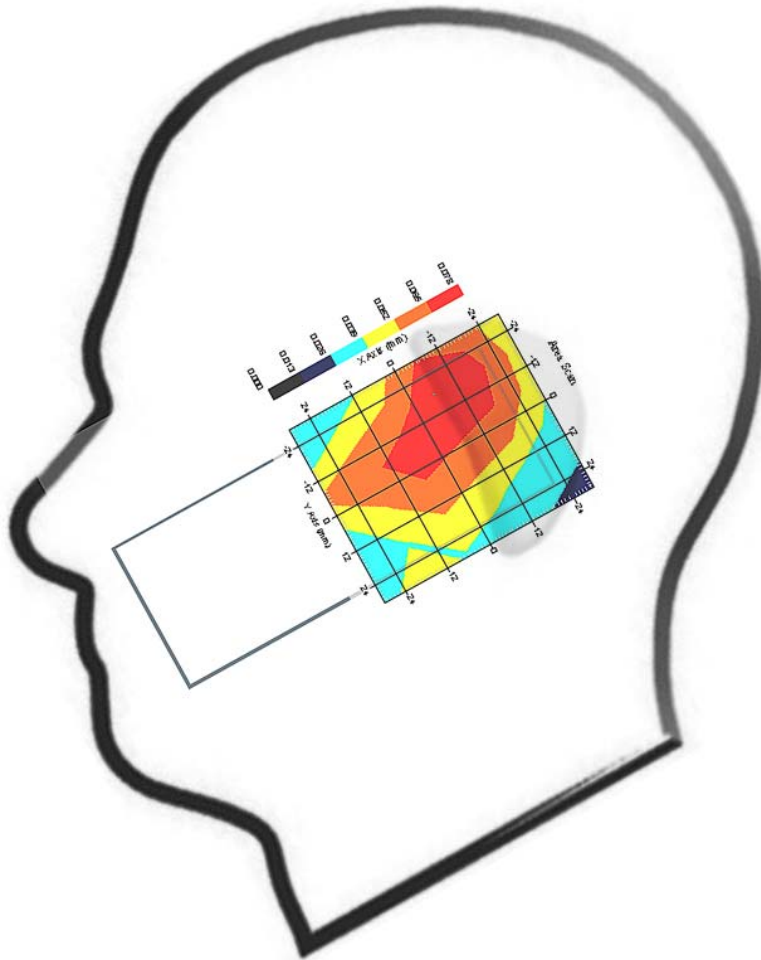
Area Scan



Measurement Data

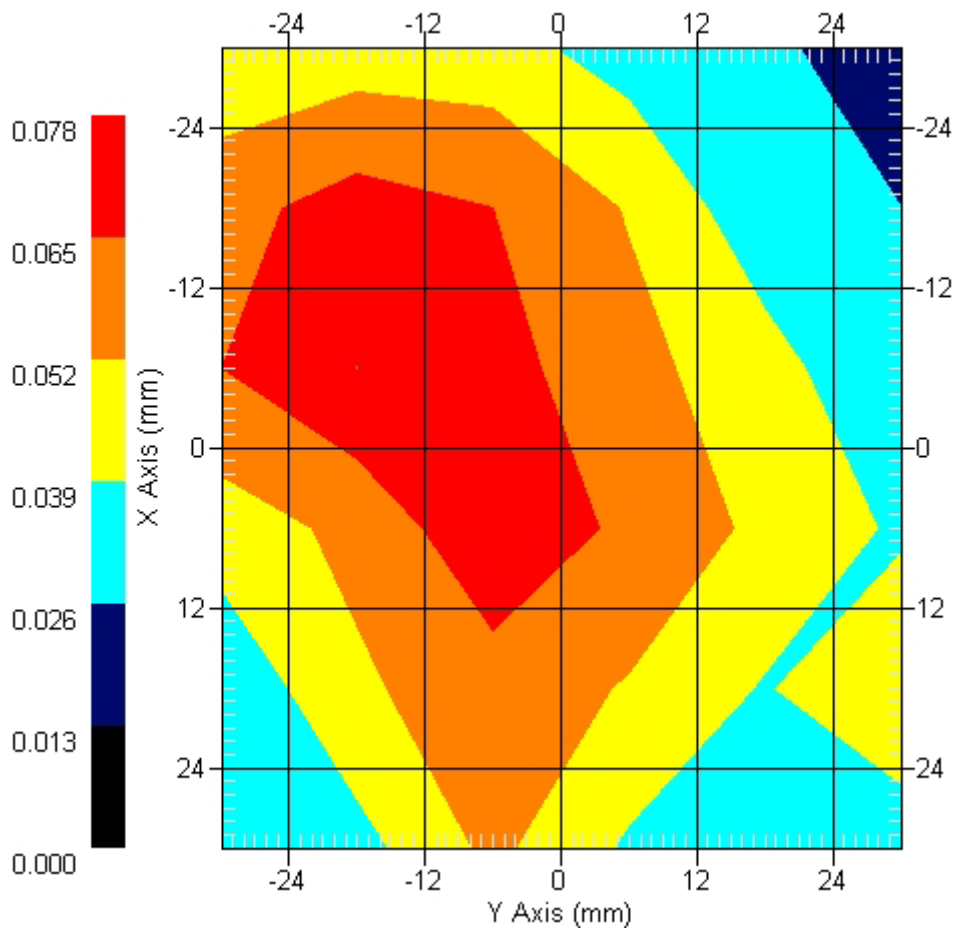
Crest Factor : 1
Tissue Temp. : 23.60 °C
Ambient Temp. : 24.20 °C
Area Scan : 6x6x1 : Measurement x=12mm, y=12mm, z=4mm
Zoom Scan : 7x7x7 : Measurement x=5mm, y=5mm, z=5mm
Power Drift-Start : 0.075 W/kg
Power Drift-Finish: 0.077 W/kg
Power Drift (%) : 2.676

DUT Position : 15° Tilt
Channel : 11



1 gram SAR value : 0.078 W/kg
10 gram SAR value : 0.063 W/kg
Area Scan Peak SAR : 0.078 W/kg
Zoom Scan Peak SAR : 0.180 W/kg

Area Scan



ALSAS-10U VER 2.3.2 APREL Laboratories

SAR Test Report- 802.11g

Report Date : 20-Jul-2007
Measurement Date : 20-Jul-2007

Product Data

Device Name : Mobile Phone
Type : Std Form Cell Phone
Model : WIGO 800i
Frequency : 2450.00 MHz
Drift Time : 0 min(s)
Length : 125.3 mm
Width : 49.1 mm
Depth : 21 mm
Antenna Type : Internal

Phantom Data

Type : SAM-Left
Size (mm) : 280 x 280 x 280
Location : Left

Tissue Data

Type : HEAD
Serial No. : 325-H
Frequency : 2450.00 MHz
Last Calib. Date : 20-Jul-2007
Temperature : 23.60 °C
Ambient Temp. : 24.20 °C
Humidity : 46.00 RH%
Epsilon : 40.22 F/m
Sigma : 1.793 S/m
Density : 1000.00 kg/cu. m

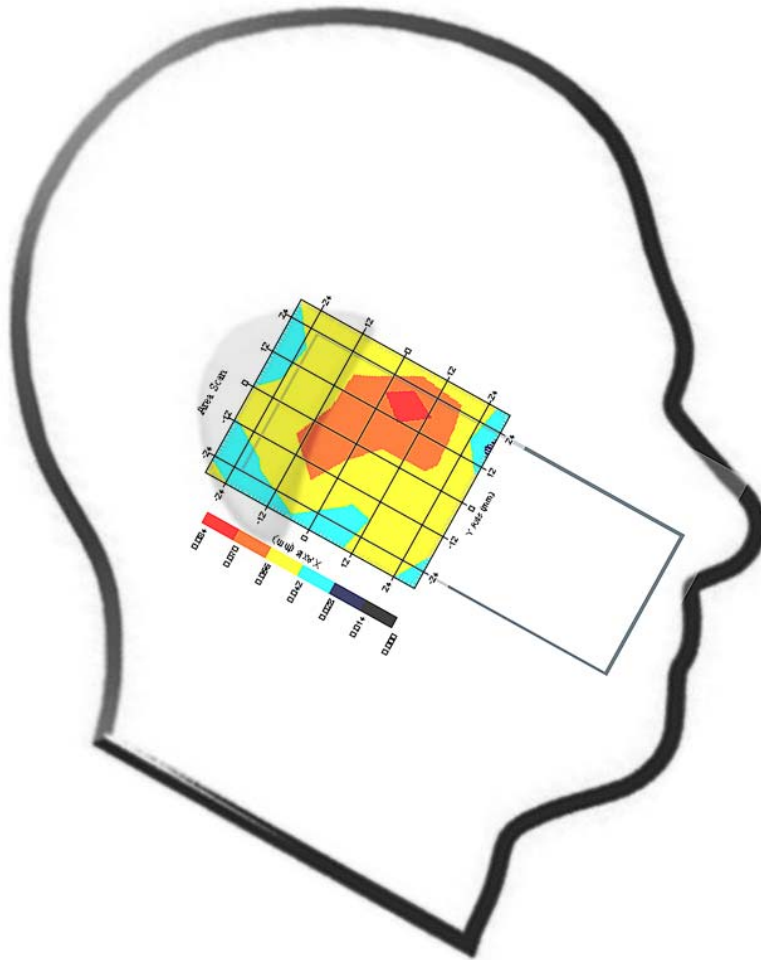
Probe Data

Name : Probe 261
Model : E020
Type : E-Field Triangle
Serial No. : 261
Last Calib. Date : 5-Apr-2007
Frequency : 2450.00 MHz
Duty Cycle Factor: 1
Conversion Factor: 4.85
Probe Sensitivity: 1.20 1.20 1.20 $\mu\text{V}/(\text{V}/\text{m})^2$
Compression Point: 95.00 mV
Offset : 1.56 mm

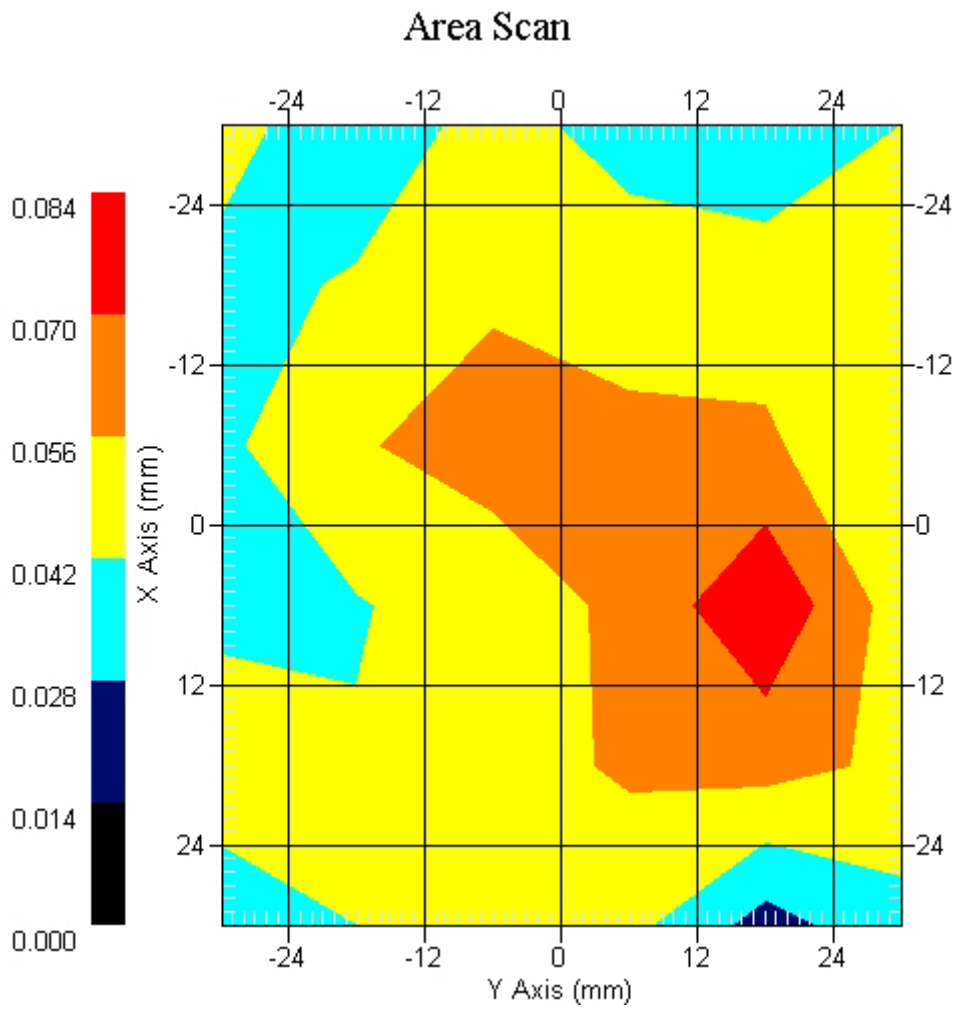
Measurement Data

Crest Factor : 1
Tissue Temp. : 23.60 °C
Ambient Temp. : 24.20 °C
Area Scan : 6x6x1 : Measurement x=12mm, y=12mm, z=4mm
Zoom Scan : 7x7x7 : Measurement x=5mm, y=5mm, z=5mm
Power Drift-Start : 0.063 W/kg
Power Drift-Finish: 0.065 W/kg
Power Drift (%) : 3.171

DUT Position : Touch
Channel : 1



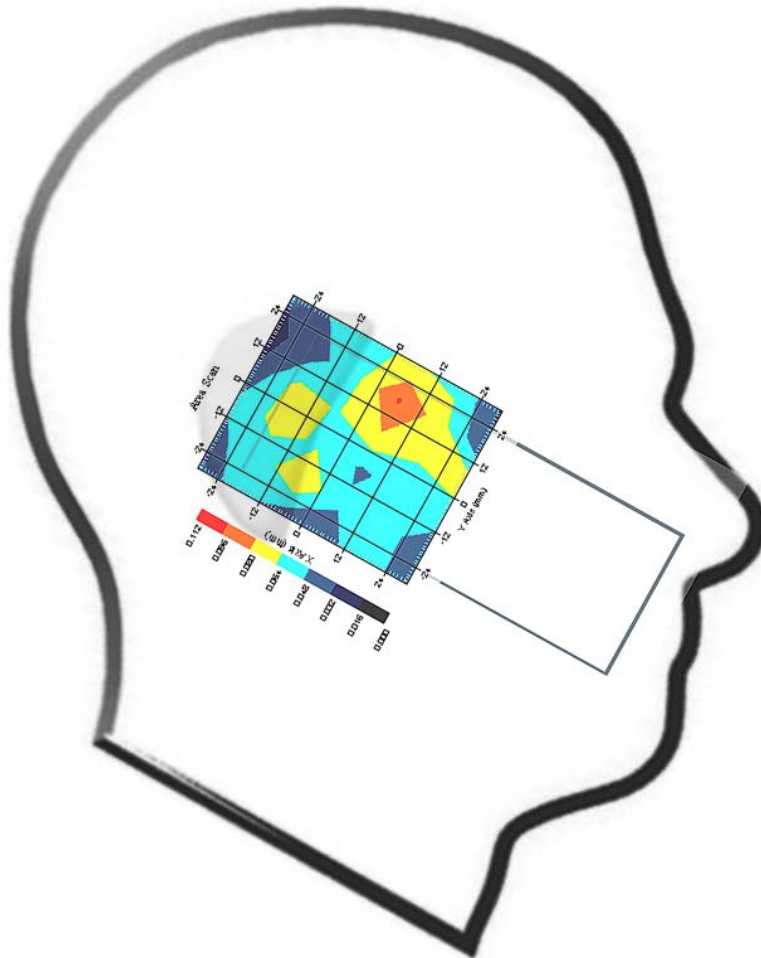
1 gram SAR value : 0.091 W/kg
10 gram SAR value : 0.058 W/kg
Area Scan Peak SAR : 0.082 W/kg
Zoom Scan Peak SAR : 0.170 W/kg



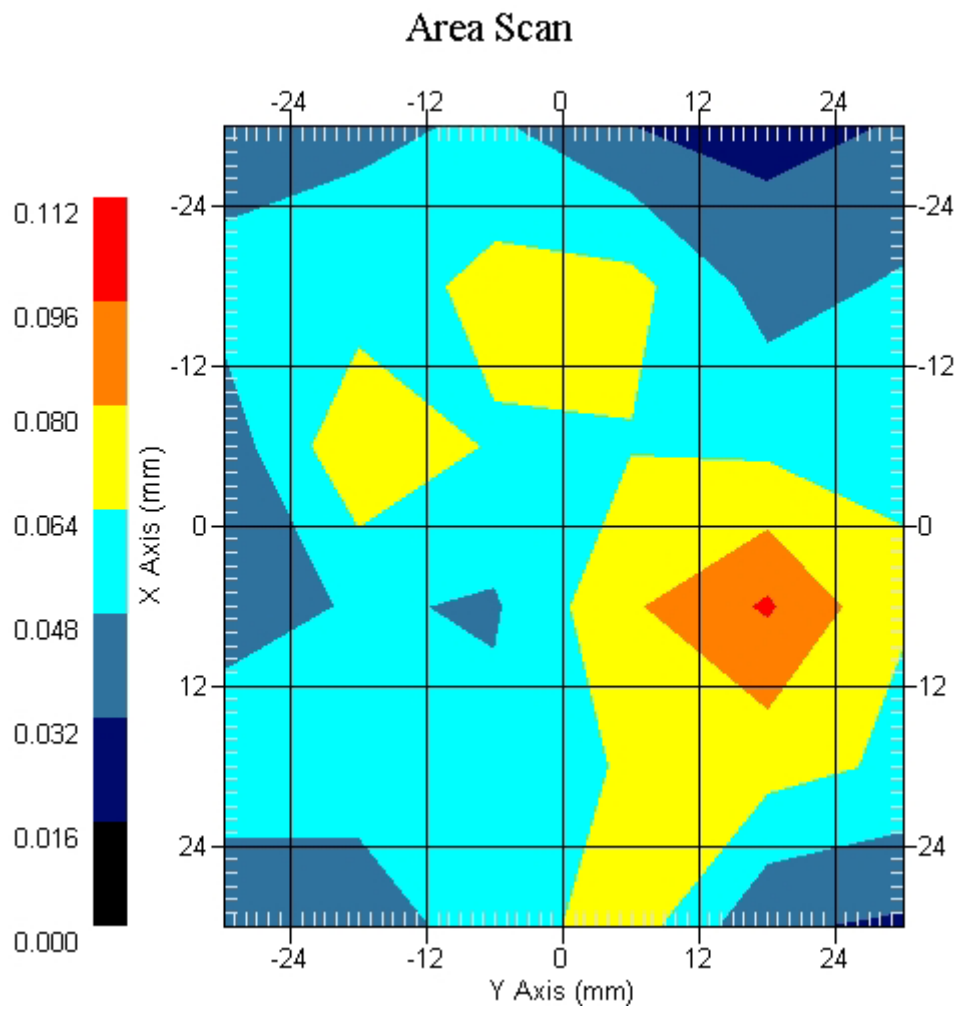
Measurement Data

Crest Factor : 1
Tissue Temp. : 23.60 °C
Ambient Temp. : 24.20 °C
Area Scan : 6x6x1 : Measurement x=12mm, y=12mm, z=4mm
Zoom Scan : 7x7x7 : Measurement x=5mm, y=5mm, z=5mm
Power Drift-Start : 0.067 W/kg
Power Drift-Finish: 0.070 W/kg
Power Drift (%) : 4.376

DUT Position : Touch
Channel : 6



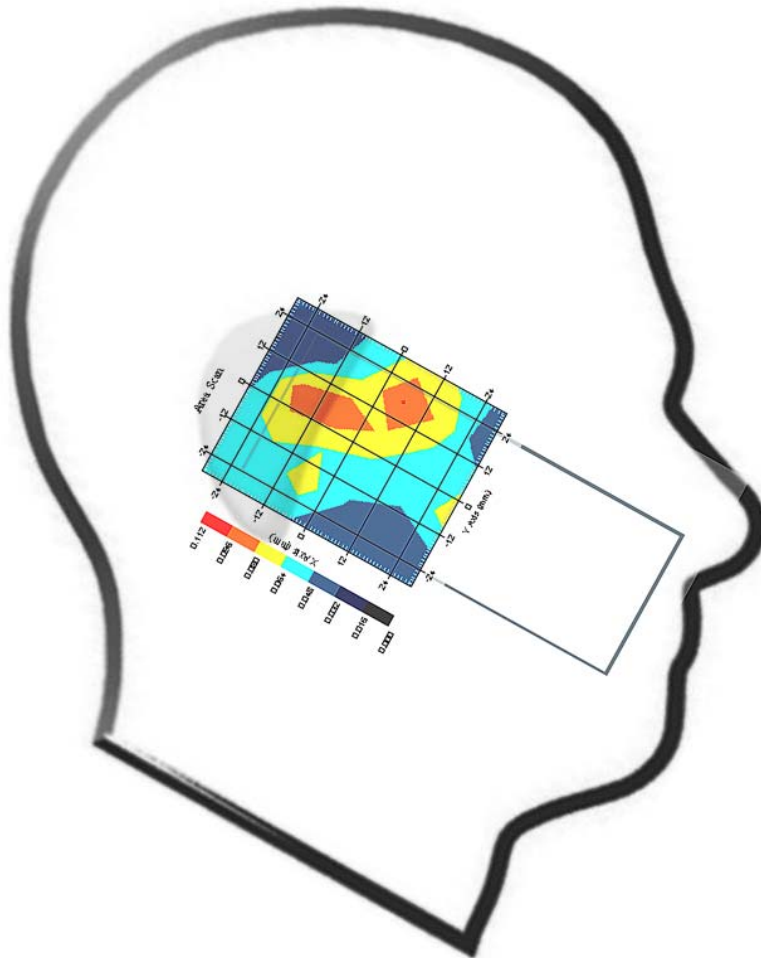
1 gram SAR value : 0.086 W/kg
10 gram SAR value : 0.058 W/kg
Area Scan Peak SAR : 0.098 W/kg
Zoom Scan Peak SAR : 0.140 W/kg



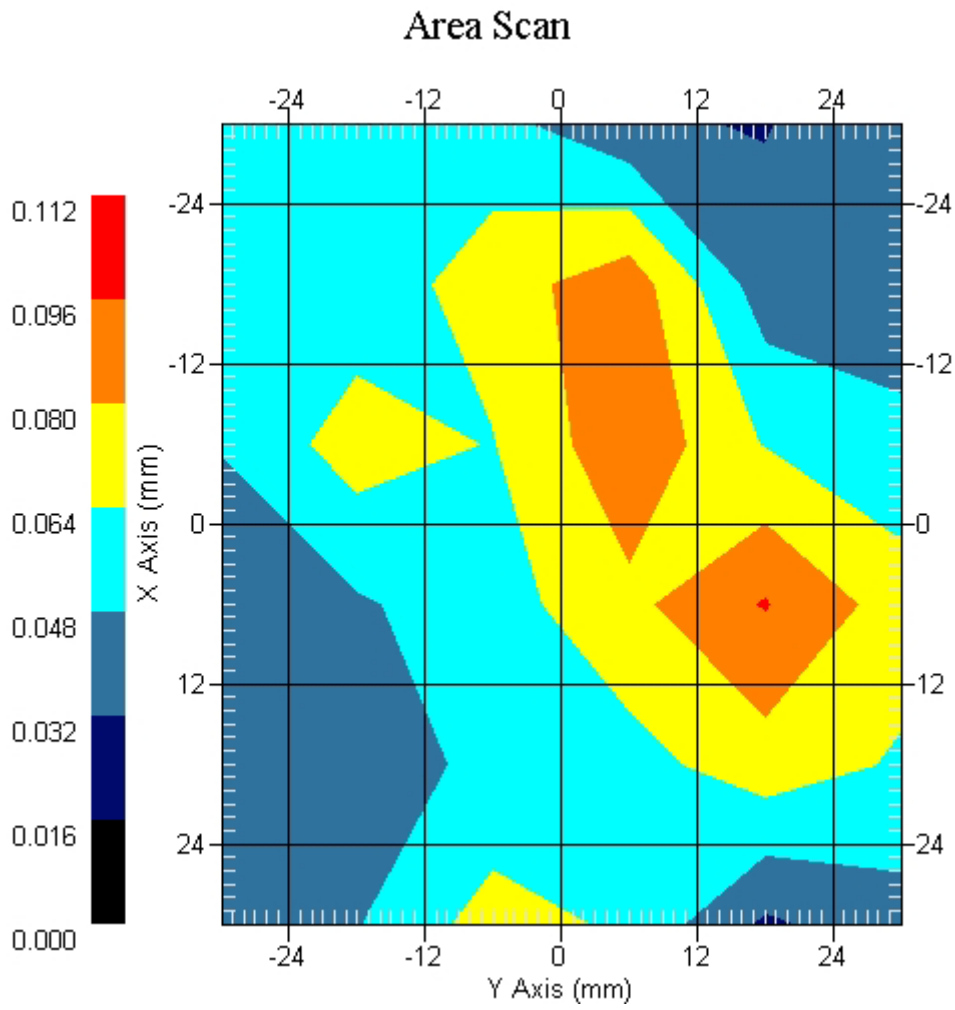
Measurement Data

Crest Factor : 1
Tissue Temp. : 23.60 °C
Ambient Temp. : 24.20 °C
Area Scan : 6x6x1 : Measurement x=12mm, y=12mm, z=4mm
Zoom Scan : 7x7x7 : Measurement x=5mm, y=5mm, z=5mm
Power Drift-Start : 0.073 W/kg
Power Drift-Finish: 0.076 W/kg
Power Drift (%) : 4.173

DUT Position : Touch
Channel : 11



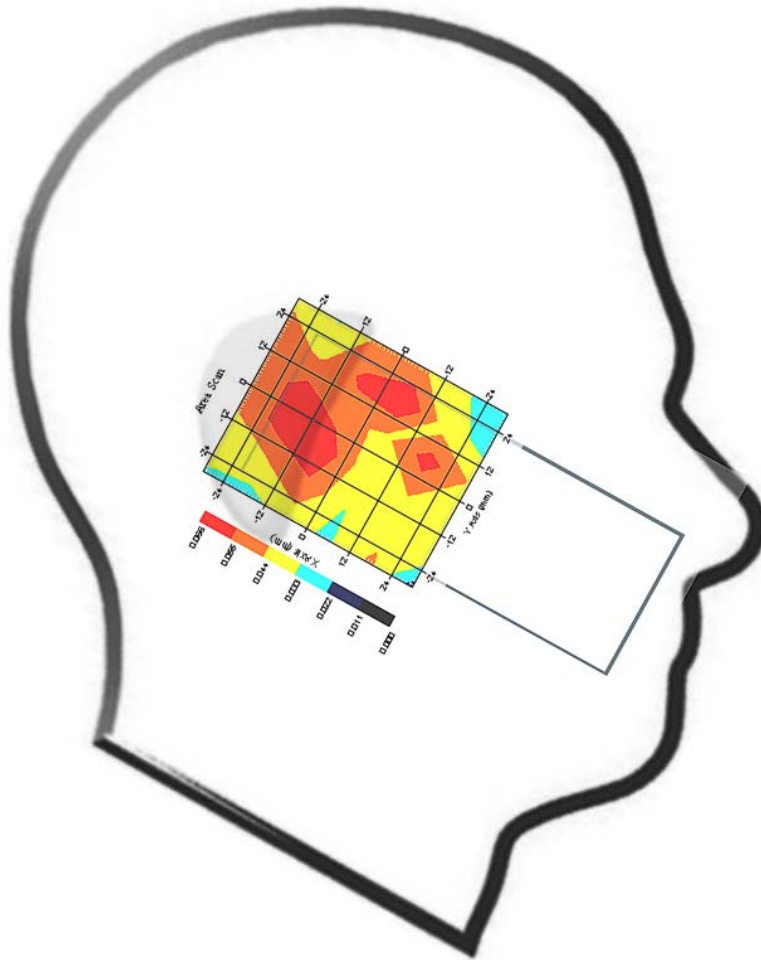
1 gram SAR value : 0.089 W/kg
10 gram SAR value : 0.059 W/kg
Area Scan Peak SAR : 0.097 W/kg
Zoom Scan Peak SAR : 0.120 W/kg



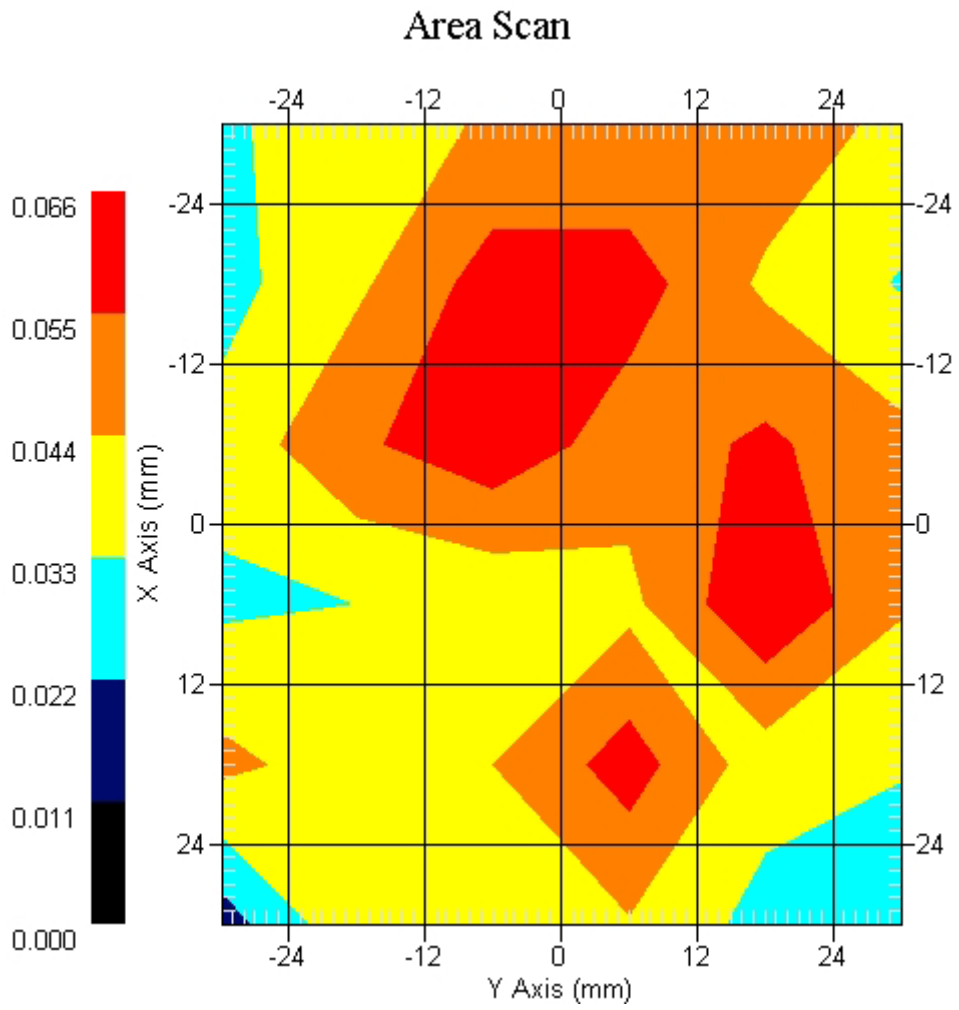
Measurement Data

Crest Factor : 1
Tissue Temp. : 23.60 °C
Ambient Temp. : 24.20 °C
Area Scan : 6x6x1 : Measurement x=12mm, y=12mm, z=4mm
Zoom Scan : 7x7x7 : Measurement x=5mm, y=5mm, z=5mm
Power Drift-Start : 0.057 W/kg
Power Drift-Finish: 0.057 W/kg
Power Drift (%) : 0.010

DUT Position : 15° Tilt
Channel : 1



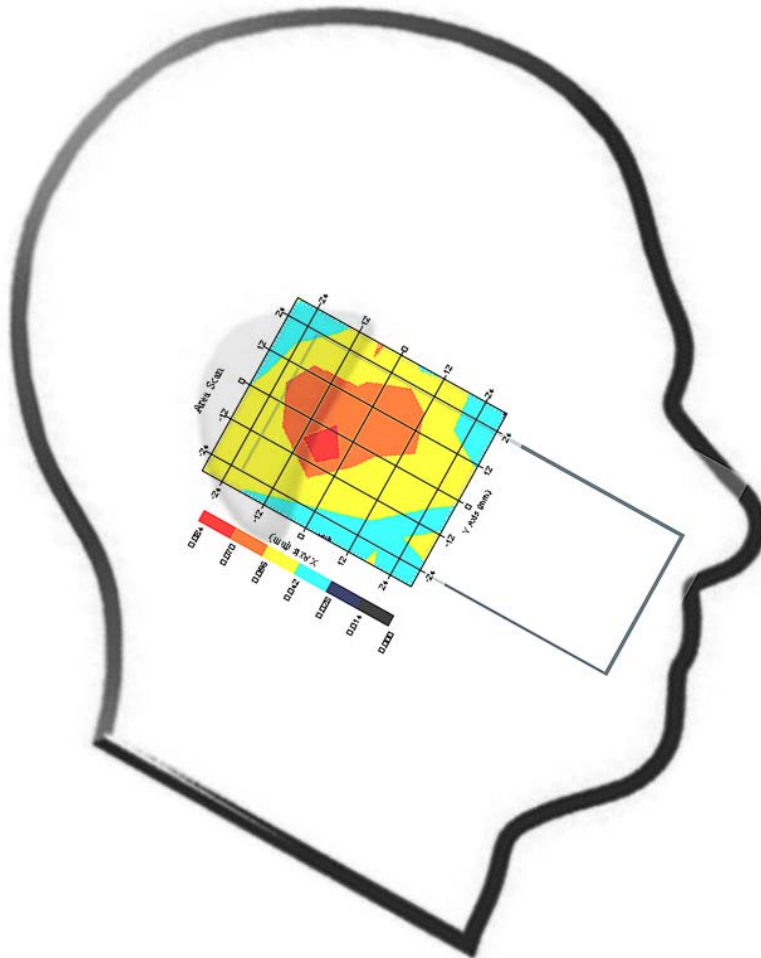
1 gram SAR value : 0.079 W/kg
10 gram SAR value : 0.051 W/kg
Area Scan Peak SAR : 0.065 W/kg
Zoom Scan Peak SAR : 0.160 W/kg



Measurement Data

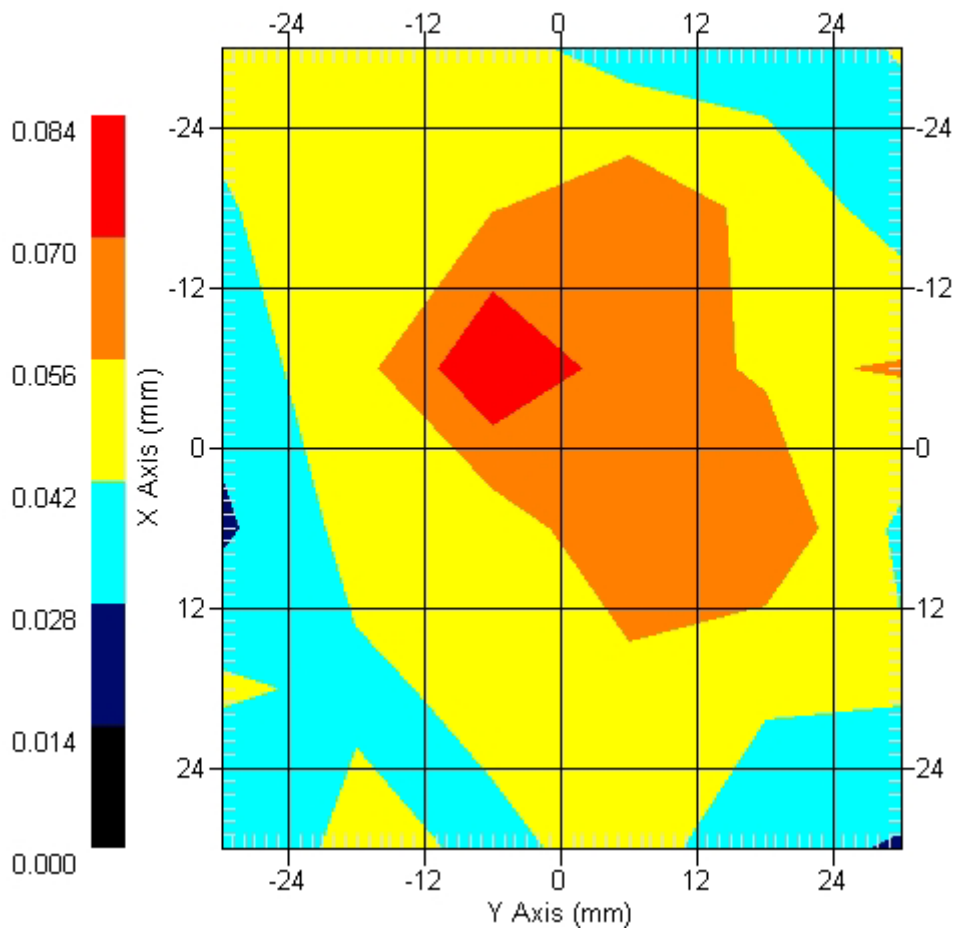
Crest Factor : 1
Tissue Temp. : 23.60 °C
Ambient Temp. : 24.20 °C
Area Scan : 6x6x1 : Measurement x=12mm, y=12mm, z=4mm
Zoom Scan : 7x7x7 : Measurement x=5mm, y=5mm, z=5mm
Power Drift-Start : 0.063 W/kg
Power Drift-Finish: 0.061 W/kg
Power Drift (%) : -3.176

DUT Position : 15° Tilt
Channel : 6



1 gram SAR value : 0.064 W/kg
10 gram SAR value : 0.049 W/kg
Area Scan Peak SAR : 0.083 W/kg
Zoom Scan Peak SAR : 0.140 W/kg

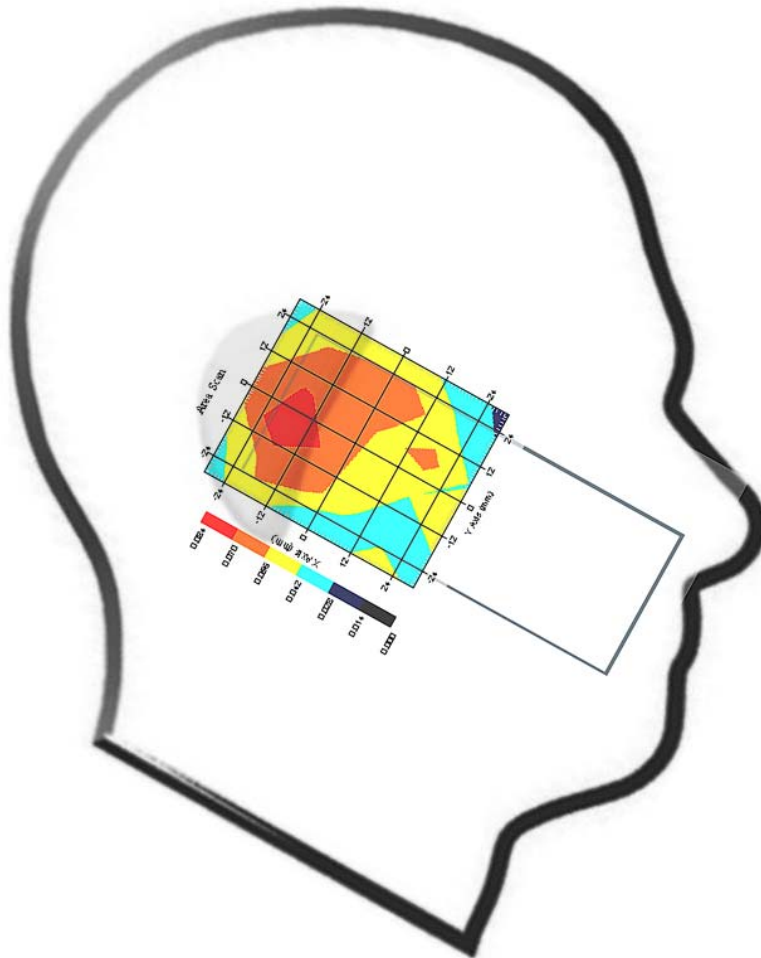
Area Scan



Measurement Data

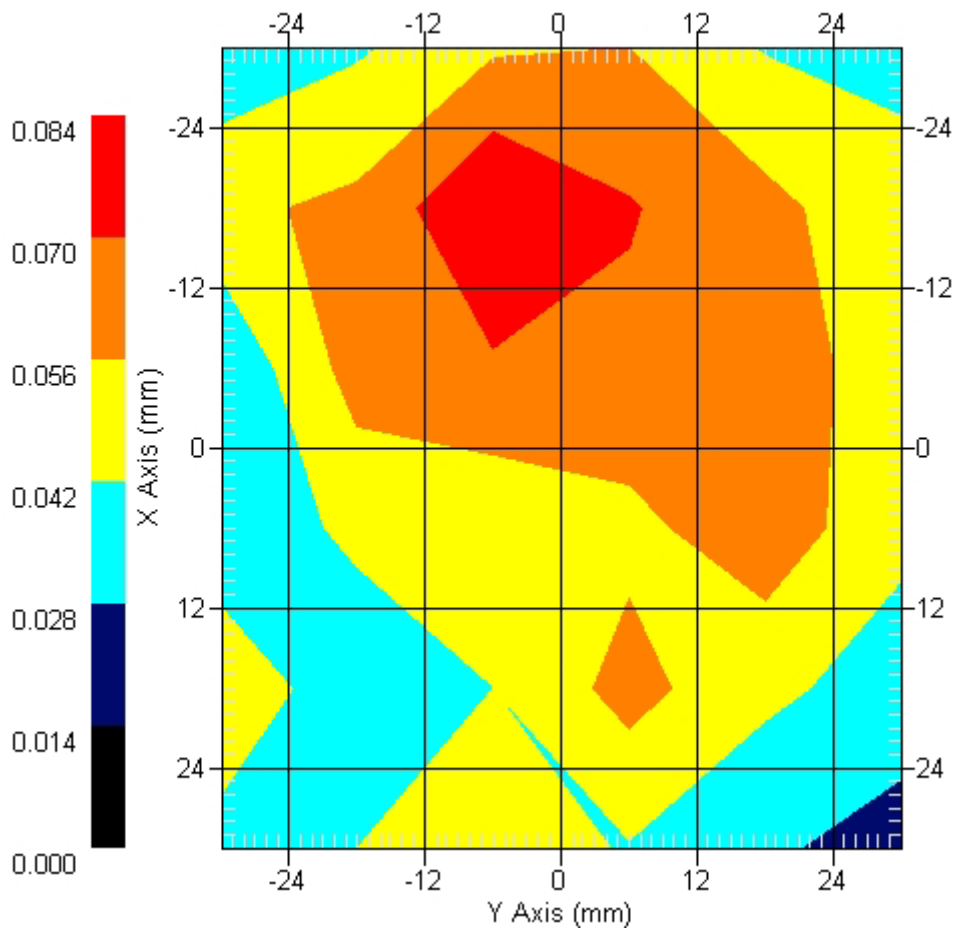
Crest Factor : 1
Tissue Temp. : 23.60 °C
Ambient Temp. : 24.20 °C
Area Scan : 6x6x1 : Measurement x=12mm, y=12mm, z=4mm
Zoom Scan : 7x7x7 : Measurement x=5mm, y=5mm, z=5mm
Power Drift-Start : 0.072 W/kg
Power Drift-Finish: 0.069 W/kg
Power Drift (%) : -4.165

DUT Position : 15° Tilt
Channel : 11



1 gram SAR value : 0.082 W/kg
10 gram SAR value : 0.054 W/kg
Area Scan Peak SAR : 0.084 W/kg
Zoom Scan Peak SAR : 0.160 W/kg

Area Scan



ALSAS-10U VER 2.3.2 APREL Laboratories

SAR Test Report- 802.11g

Report Date : 20-Jul-2007
Measurement Date : 20-Jul-2007

Product Data

Device Name : Mobile Phone
Type : Std Form Cell Phone
Model : WIGO 800i
Frequency : 2450.00 MHz
Drift Time : 0 min(s)
Length : 125.3 mm
Width : 49.1 mm
Depth : 21 mm
Antenna Type : Internal

Phantom Data

Type : Uni-Phantom
Size (mm) : 280 x 280 x 200
Location : Center

Tissue Data

Type : BODY
Serial No. : 325-B
Frequency : 2450.00 MHz
Last Calib. Date : 20-Jul-2007
Temperature : 23.60 °C
Ambient Temp. : 24.20 °C
Humidity : 46.00 RH%
Epsilon : 51.33 F/m
Sigma : 1.966 S/m
Density : 1000.00 kg/cu. m

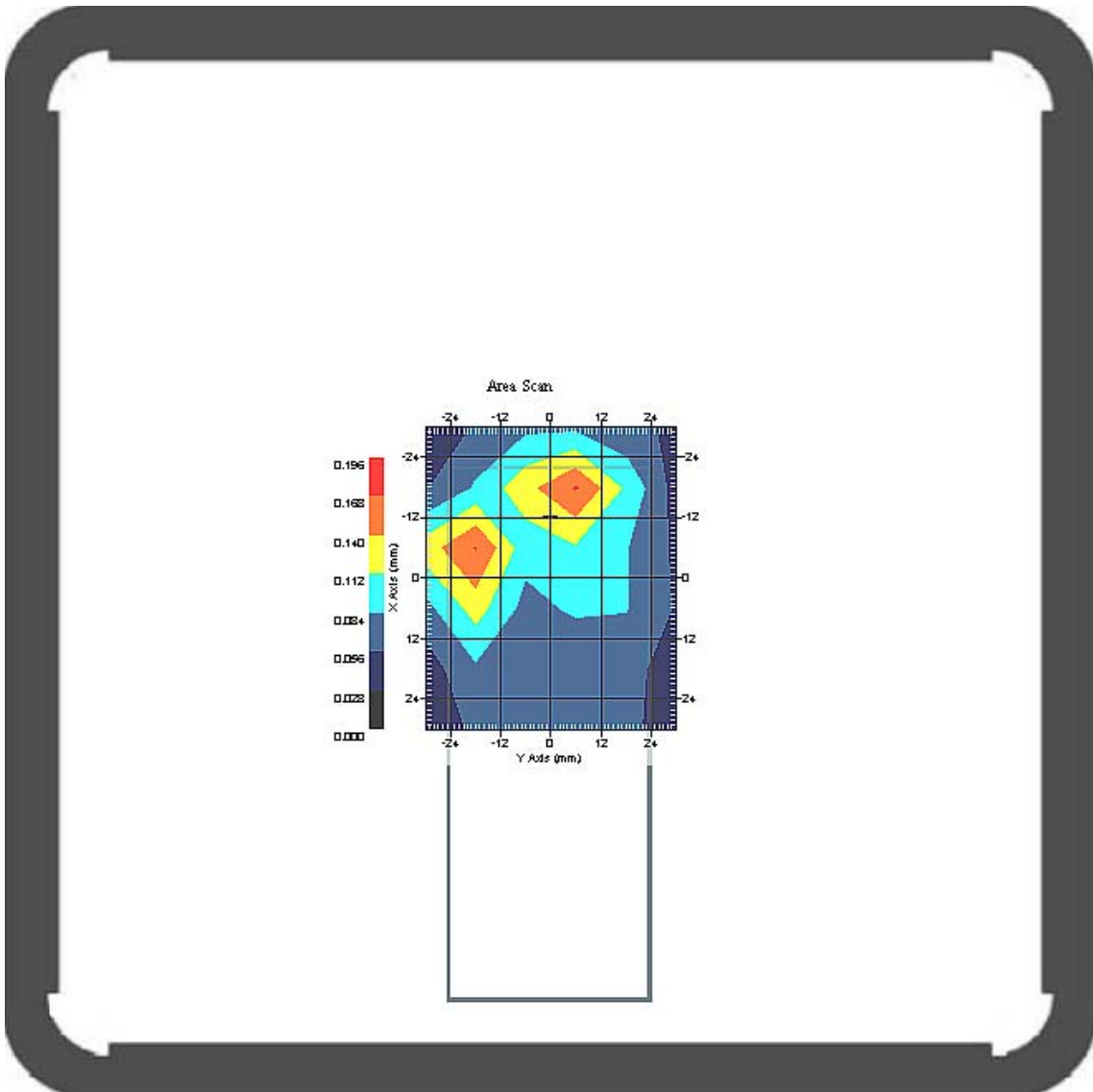
Probe Data

Name : Probe 261
Model : E020
Type : E-Field Triangle
Serial No. : 261
Last Calib. Date : 5-Apr-2007
Frequency : 2450.00 MHz
Duty Cycle Factor: 1
Conversion Factor: 4.4
Probe Sensitivity: 1.20 1.20 1.20 $\mu\text{V}/(\text{V}/\text{m})^2$
Compression Point: 95.00 mV
Offset : 1.56 mm

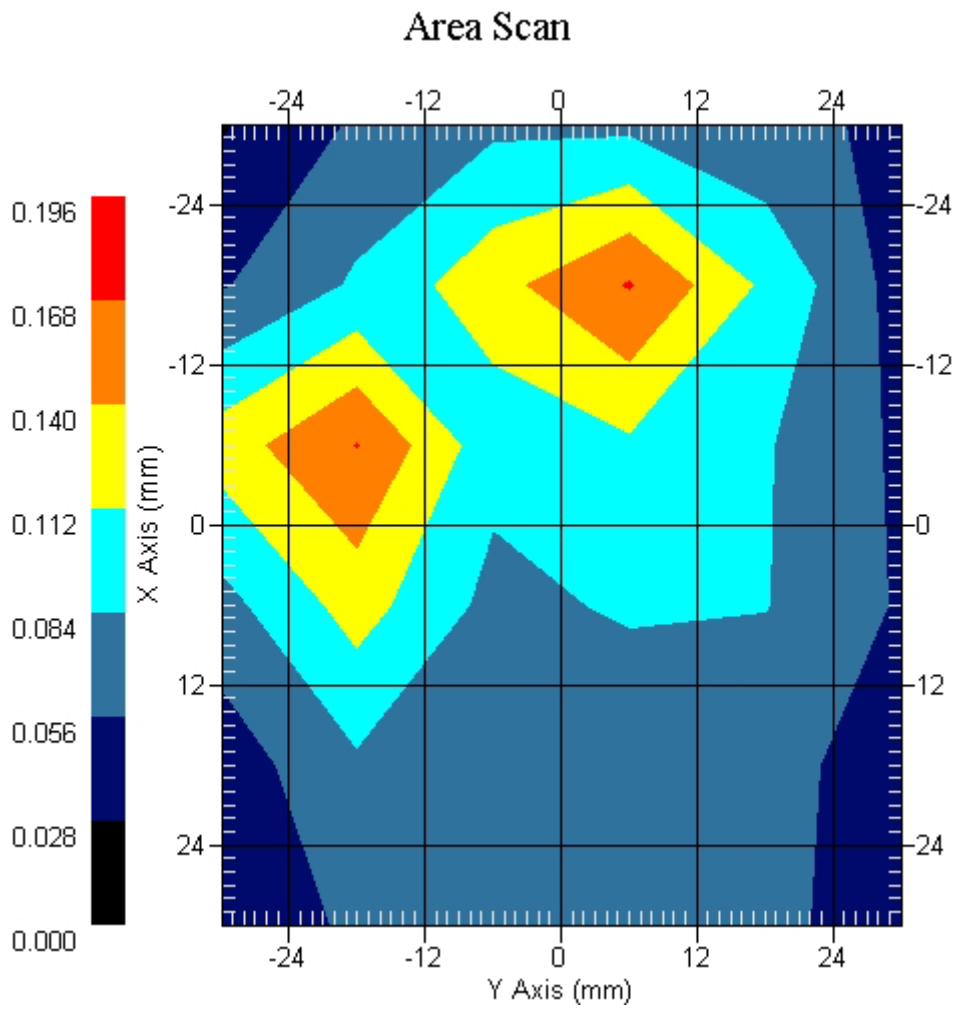
Measurement Data

Crest Factor : 1
 Tissue Temp. : 23.60 °C
 Ambient Temp. : 24.20 °C
 Area Scan : 6x6x1 : Measurement x=12mm, y=12mm, z=4mm
 Zoom Scan : 7x7x7 : Measurement x=5mm, y=5mm, z=5mm
 Power Drift-Start : 0.112 W/kg
 Power Drift-Finish: 0.109 W/kg
 Power Drift (%) : -2.604

DUT Position : Touch
 Channel : 1



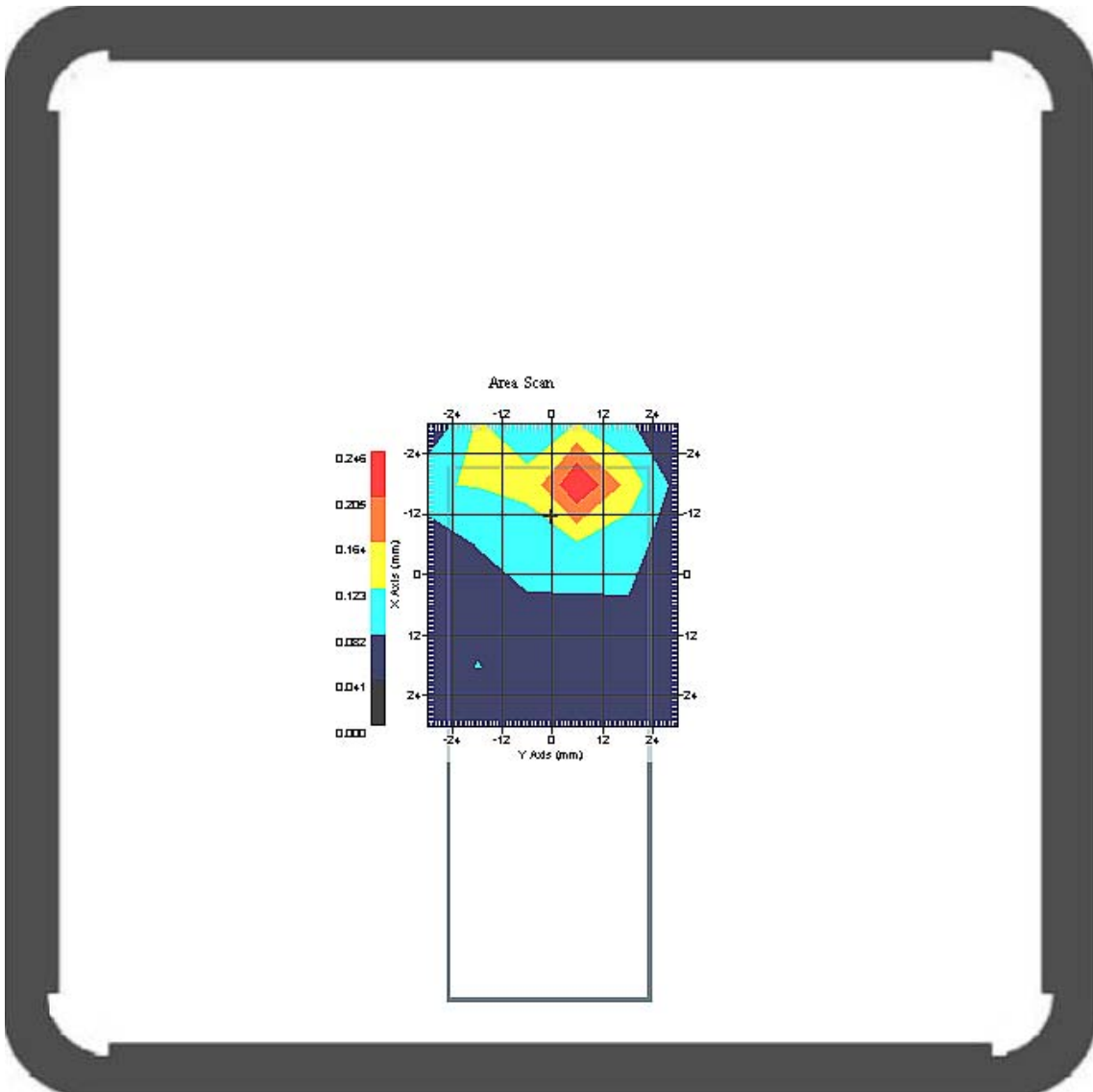
1 gram SAR value : 0.169 W/kg
 10 gram SAR value : 0.090 W/kg
 Area Scan Peak SAR : 0.170 W/kg
 Zoom Scan Peak SAR : 0.400 W/kg



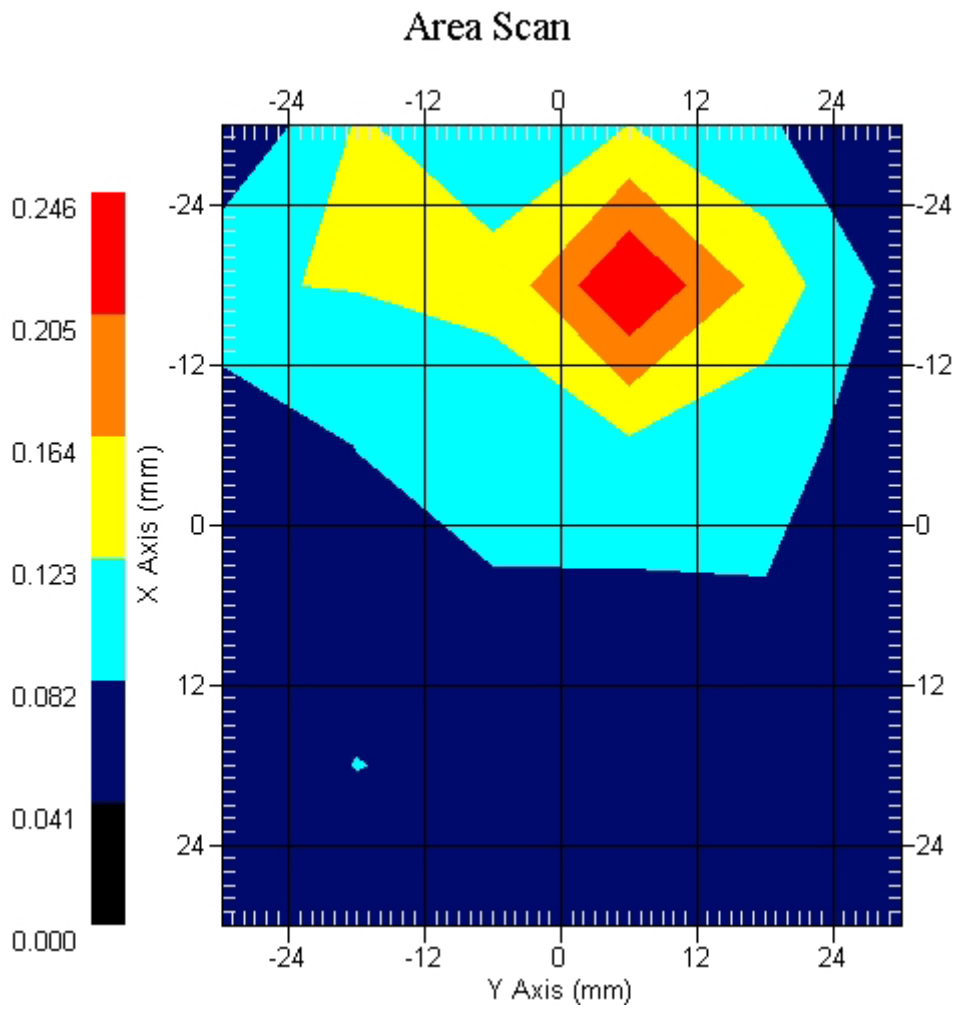
Measurement Data

Crest Factor : 1
 Tissue Temp. : 23.60 °C
 Ambient Temp. : 24.20 °C
 Area Scan : 6x6x1 : Measurement x=12mm, y=12mm, z=4mm
 Zoom Scan : 7x7x7 : Measurement x=5mm, y=5mm, z=5mm
 Power Drift-Start : 0.172 W/kg
 Power Drift-Finish: 0.176 W/kg
 Power Drift (%) : 2.361

DUT Position : Touch
 Channel : 6



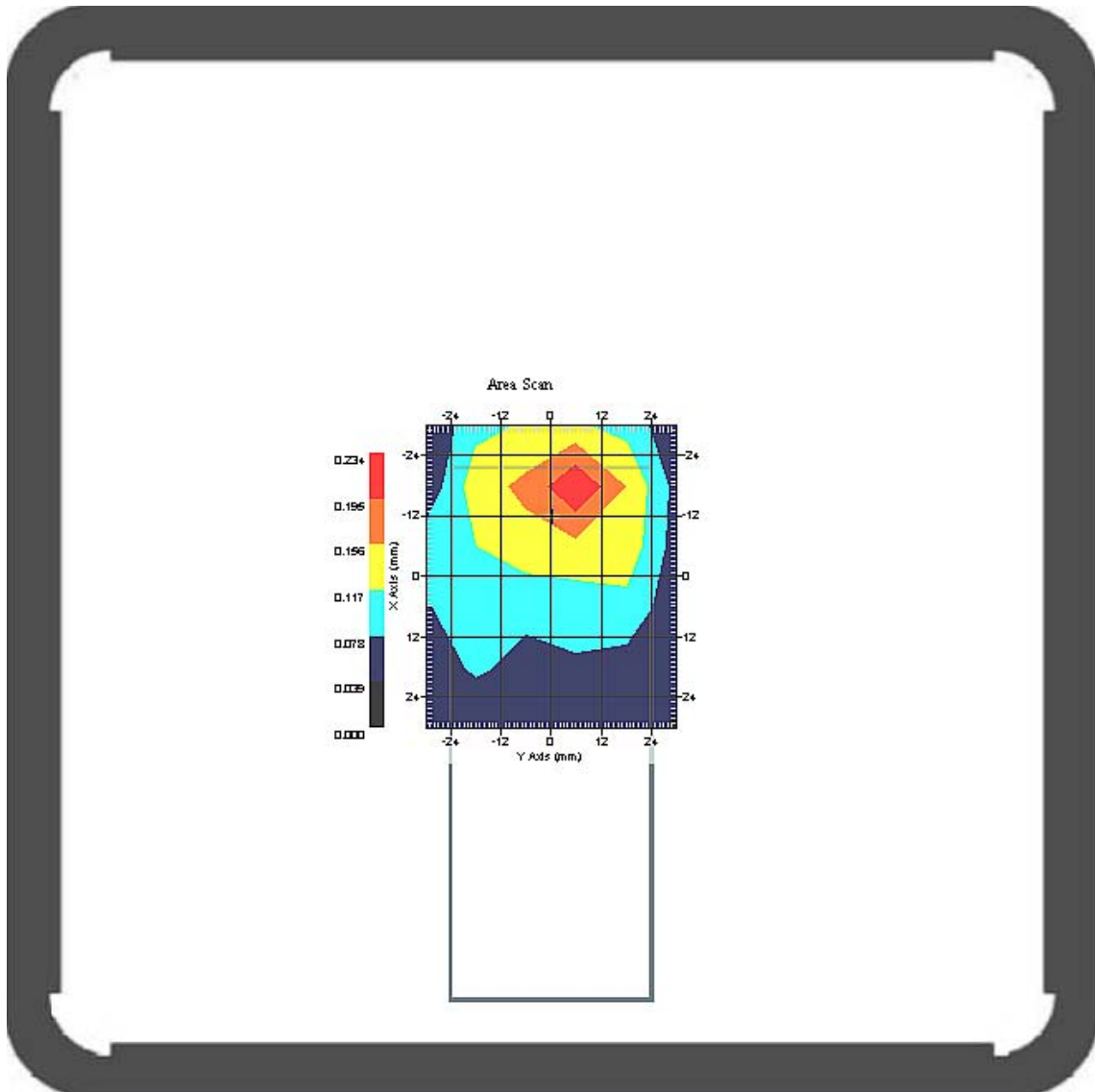
1 gram SAR value : 0.203 W/kg
 10 gram SAR value : 0.107 W/kg
 Area Scan Peak SAR : 0.246 W/kg
 Zoom Scan Peak SAR : 0.573 W/kg



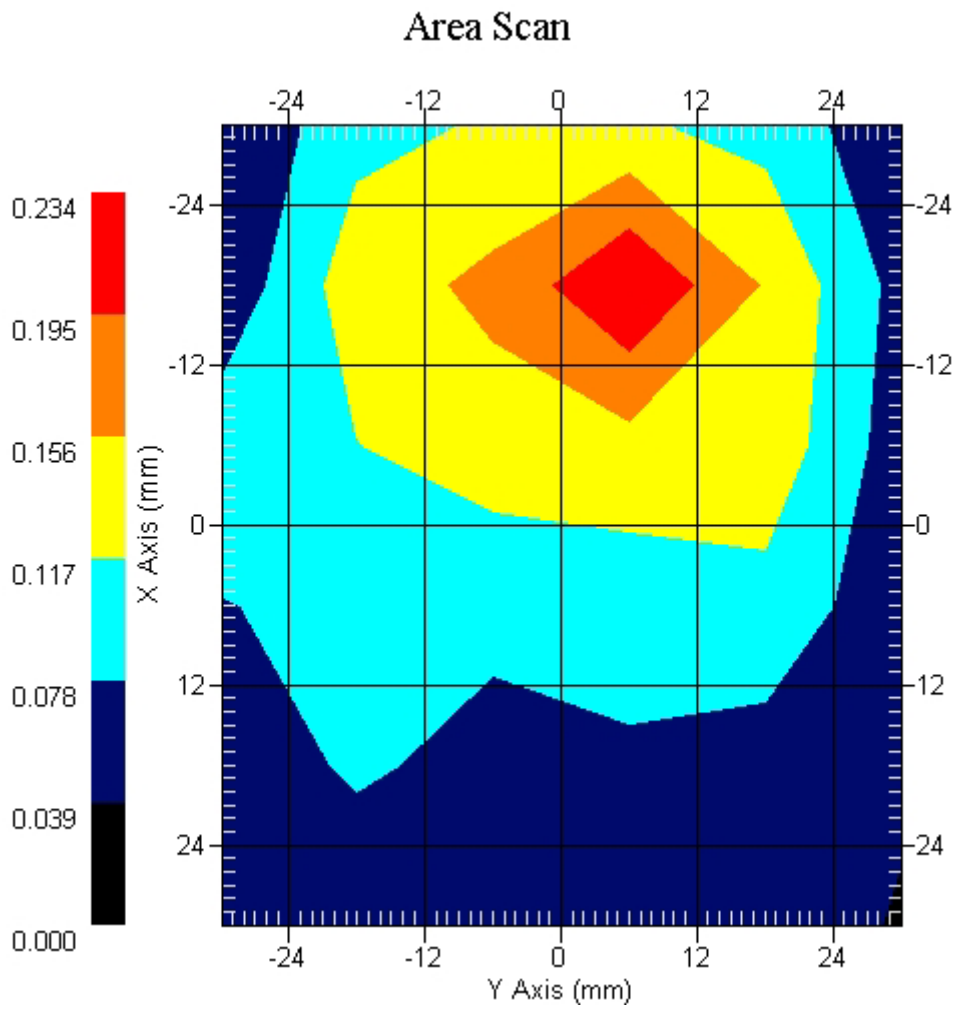
Measurement Data

Crest Factor : 1
Tissue Temp. : 23.60 °C
Ambient Temp. : 24.20 °C
Area Scan : 6x6x1 : Measurement x=12mm, y=12mm, z=4mm
Zoom Scan : 7x7x7 : Measurement x=5mm, y=5mm, z=5mm
Power Drift-Start : 0.179 W/kg
Power Drift-Finish: 0.176 W/kg
Power Drift (%) : -1.641

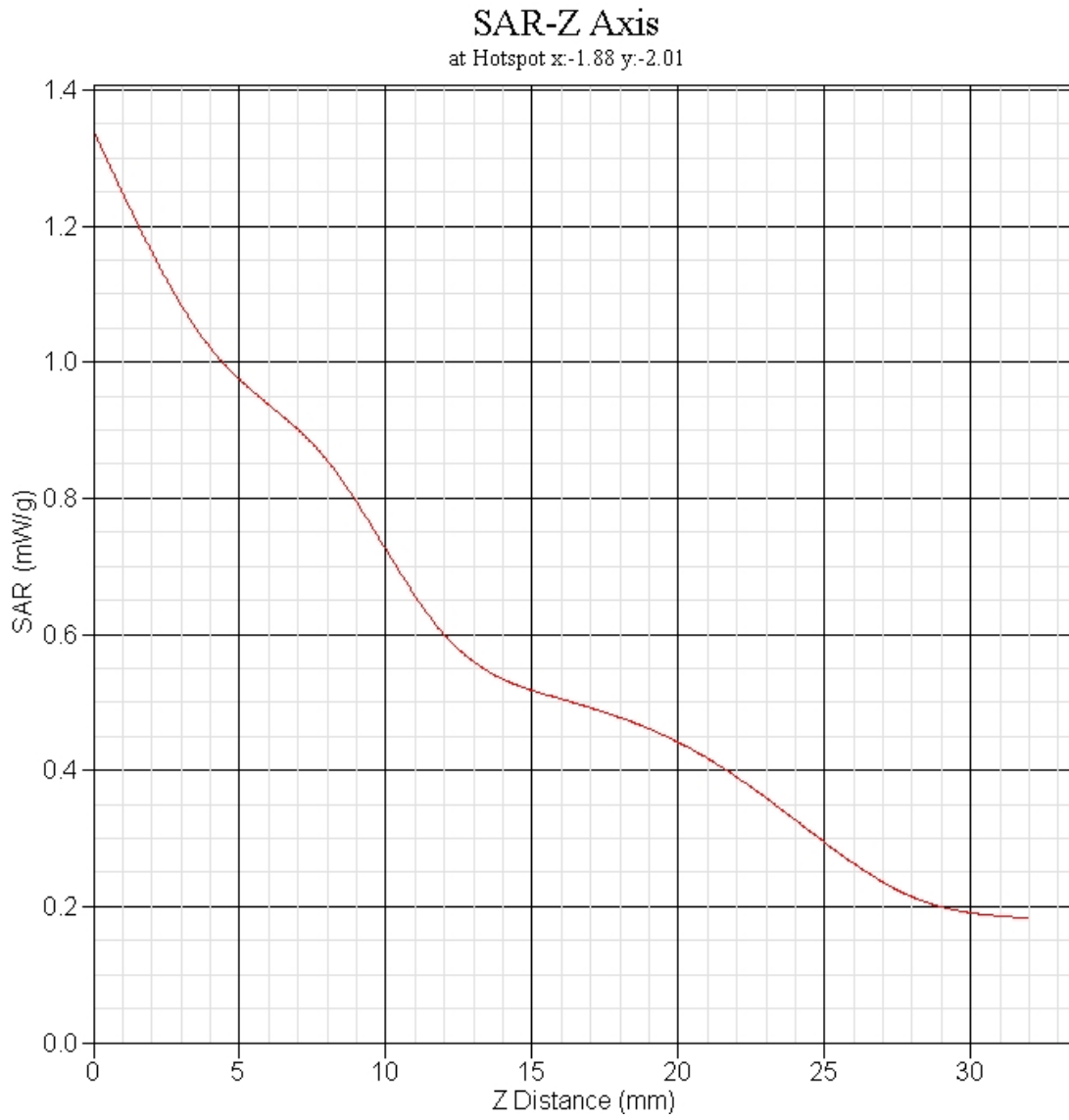
DUT Position : Touch
Channel : 11



1 gram SAR value : 0.176 W/kg
10 gram SAR value : 0.105 W/kg
Area Scan Peak SAR : 0.233 W/kg
Zoom Scan Peak SAR : 0.350 W/kg

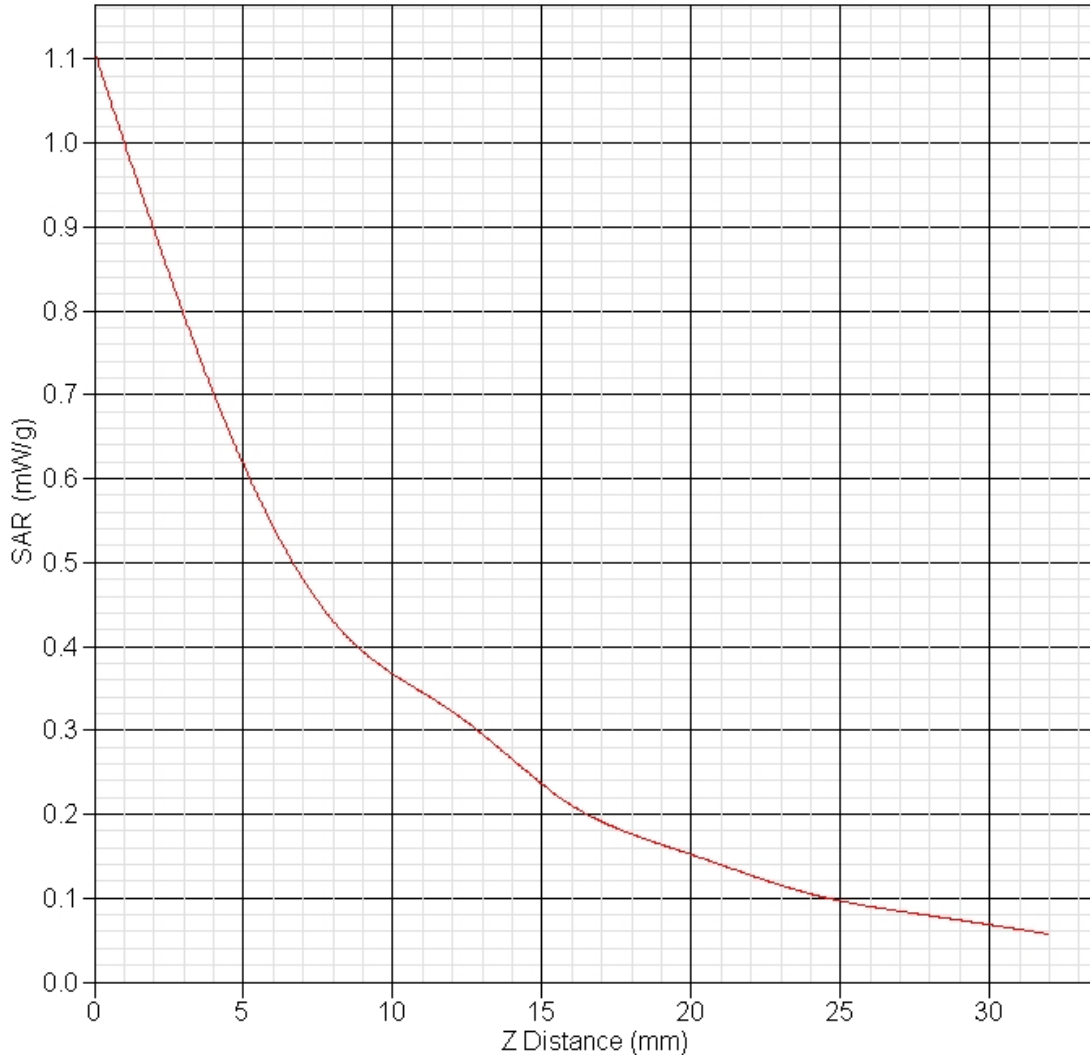


GSM 850 EUT Body-worn Z-Axis plot
Channel: 189

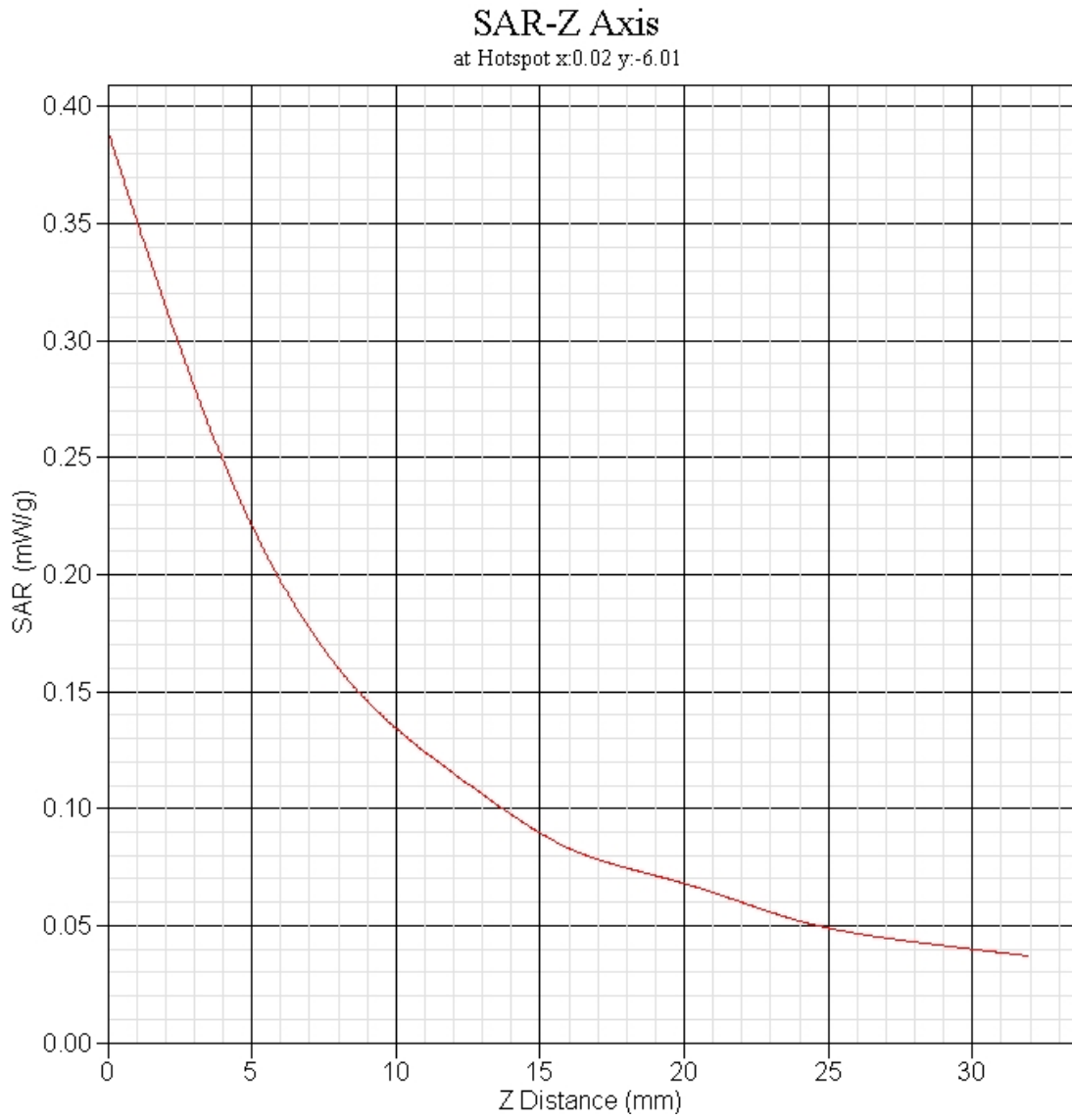


PCS 1900 EUT Body-worn Z-Axis plot
Channel: 512

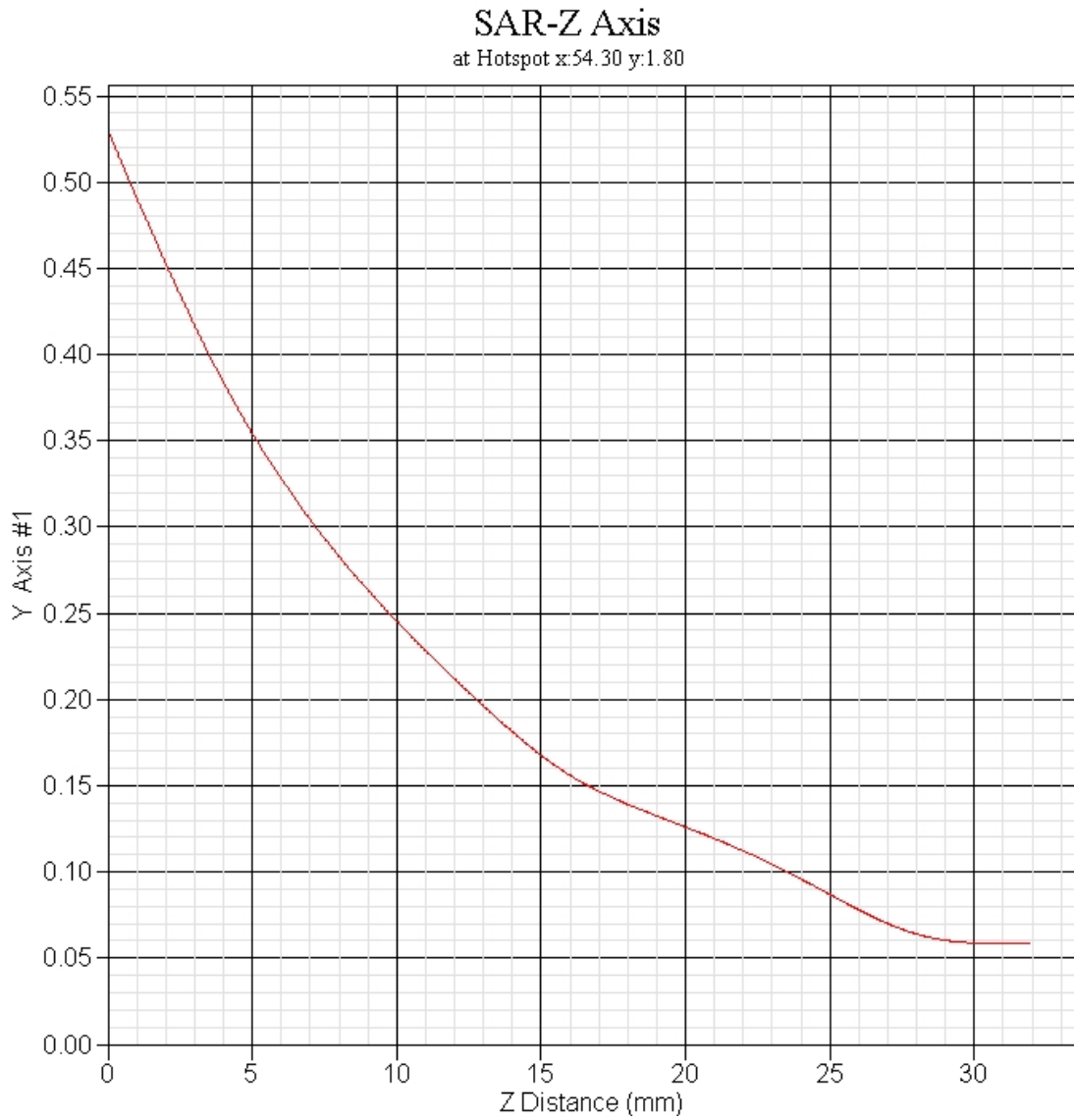
SAR-Z Axis
at Hotspot x:-1.91 y:5.99



802.11b EUT Body-worn Z-Axis plot
Channel: 11



802.11g EUT Body-worn Z-Axis plot
Channel: 6



Test Setup Photographs

Right Head (EUT Cheek)



Left Head (EUT Cheek)

