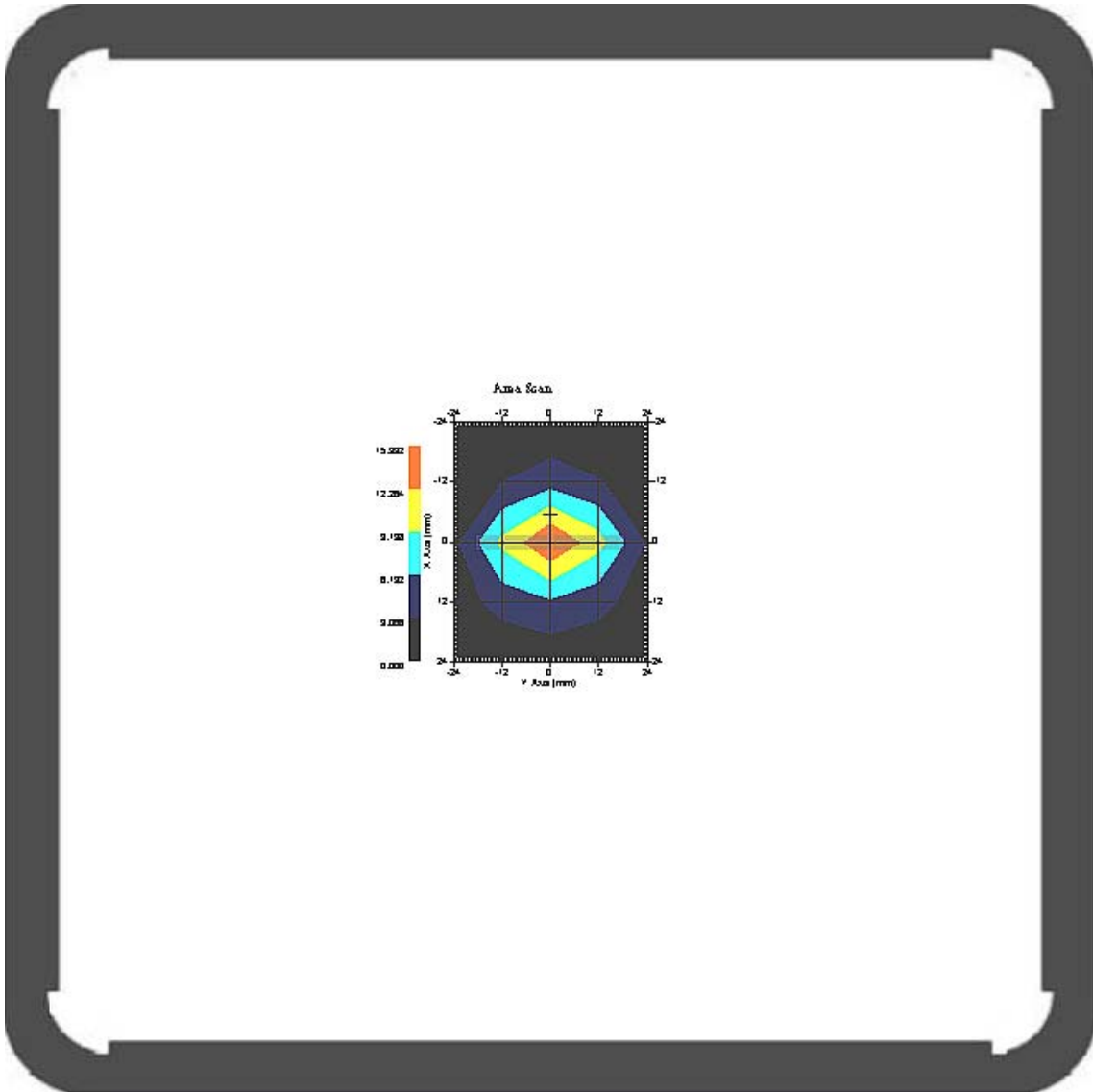


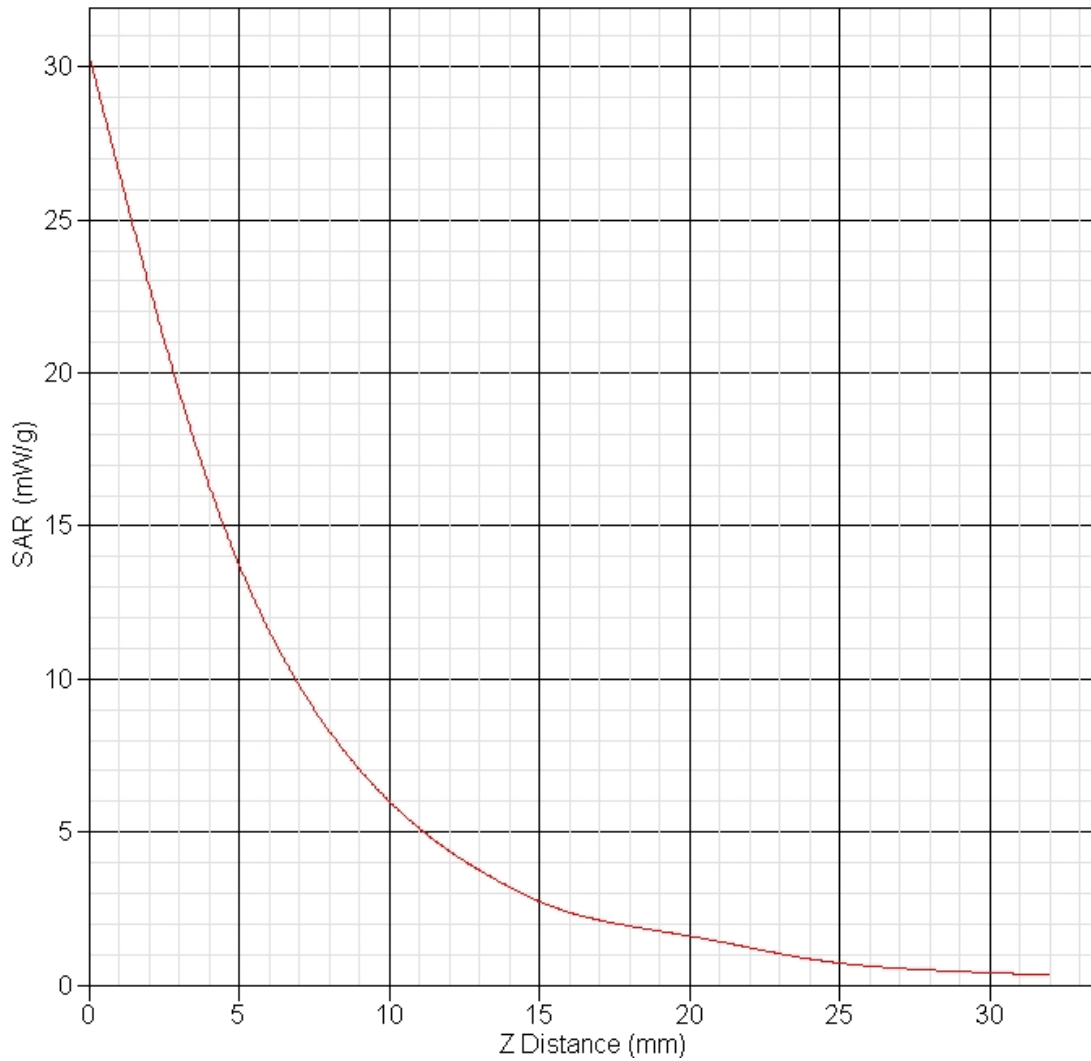
Measurement Data

Crest Factor : 1
Tissue Temp. : 23.60 °C
Ambient Temp. : 24.20 °C
Area Scan : 5x5x1 : Measurement x=12mm, y=12mm, z=4mm
Zoom Scan : 7x7x7 : Measurement x=5mm, y=5mm, z=5mm
Frequency : 2450 MHz

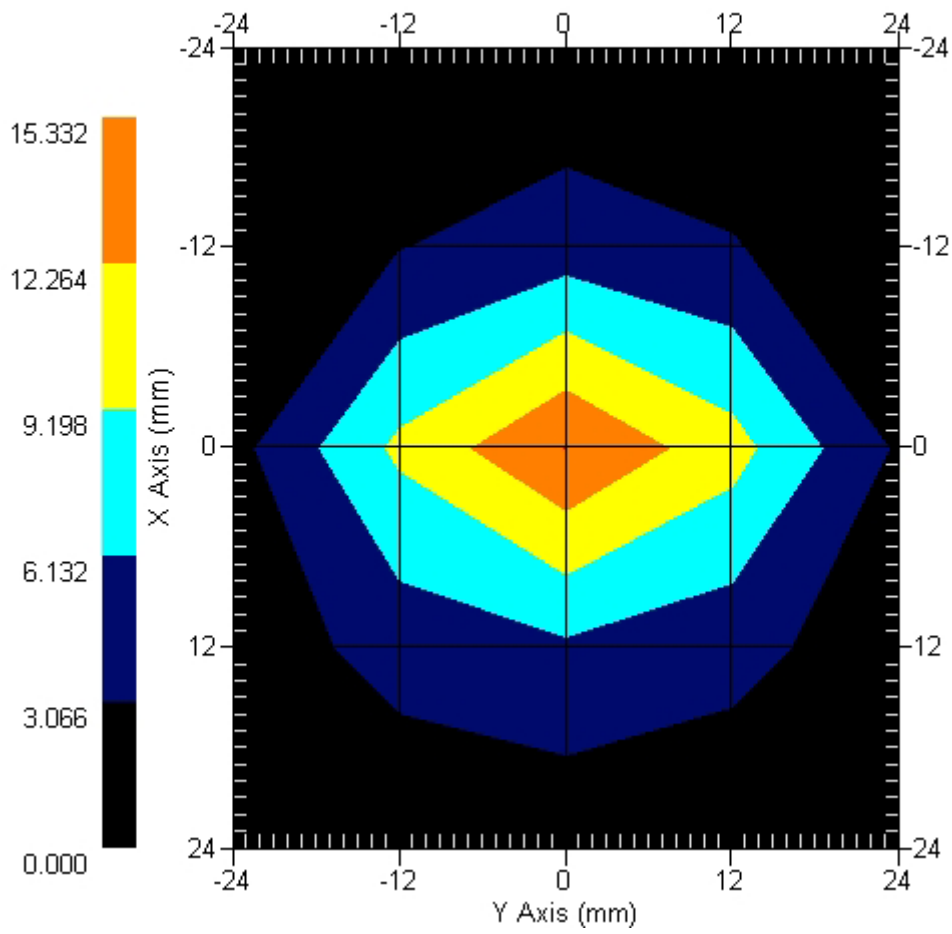


1 gram SAR value : 13.647 W/kg
10 gram SAR value : 5.783 W/kg
Area Scan Peak SAR : 15.332 W/kg
Zoom Scan Peak SAR : 30.426 W/kg

SAR-Z Axis
at Hotspot x:0.10 y:-0.01



Area Scan



SAR Measurement Data

ALSAS-10U VER 2.3.2 APREL Laboratories

SAR Test Report-GSM 850

Report Date : 10-Aug-2007
Measurement Date : 10-Aug-2007

Product Data

Device Name : Mobile Phone
Type : Std Form Cell Phone
Model : WIGO 880i
Frequency : 850.00 MHz
Max. Transmit Pwr : 2 W
Drift Time : 0 min(s)
Length : 125.3 mm
Width : 49.1 mm
Depth : 21 mm
Antenna Type : Internal

Phantom Data

Type : SAM-Right
Size (mm) : 280 x 280 x 280
Location : Right

Tissue Data

Type : HEAD
Serial No. : 322-H
Frequency : 850.00 MHz
Last Calib. Date : 10-Aug-2007
Temperature : 21.10 °C
Ambient Temp. : 22.40 °C
Humidity : 46.00 RH%
Epsilon : 41.63 F/m
Sigma : 0.912 S/m
Density : 1000.00 kg/cu. m

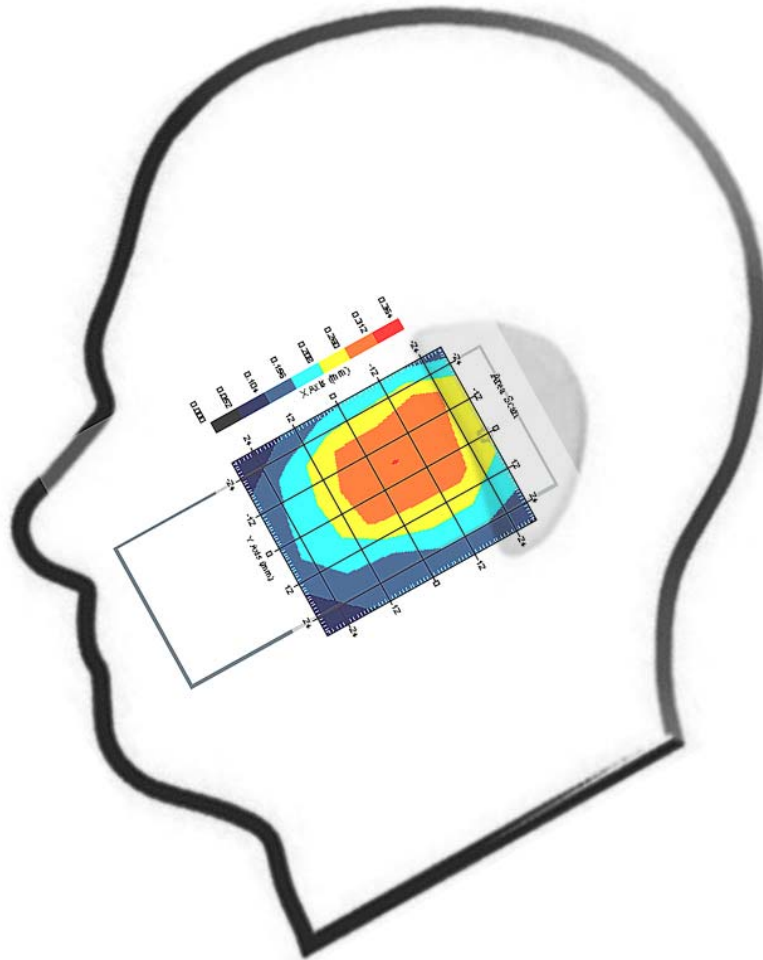
Probe Data

Name : Probe 261
Model : E020
Type : E-Field Triangle
Serial No. : 261
Last Calib. Date : 05-Apr-2007
Frequency : 835.00 MHz
Duty Cycle Factor: 8
Conversion Factor: 6.6
Probe Sensitivity: 1.20 1.20 1.20 $\mu\text{V}/(\text{V}/\text{m})^2$
Compression Point: 95.00 mV
Offset : 1.56 mm

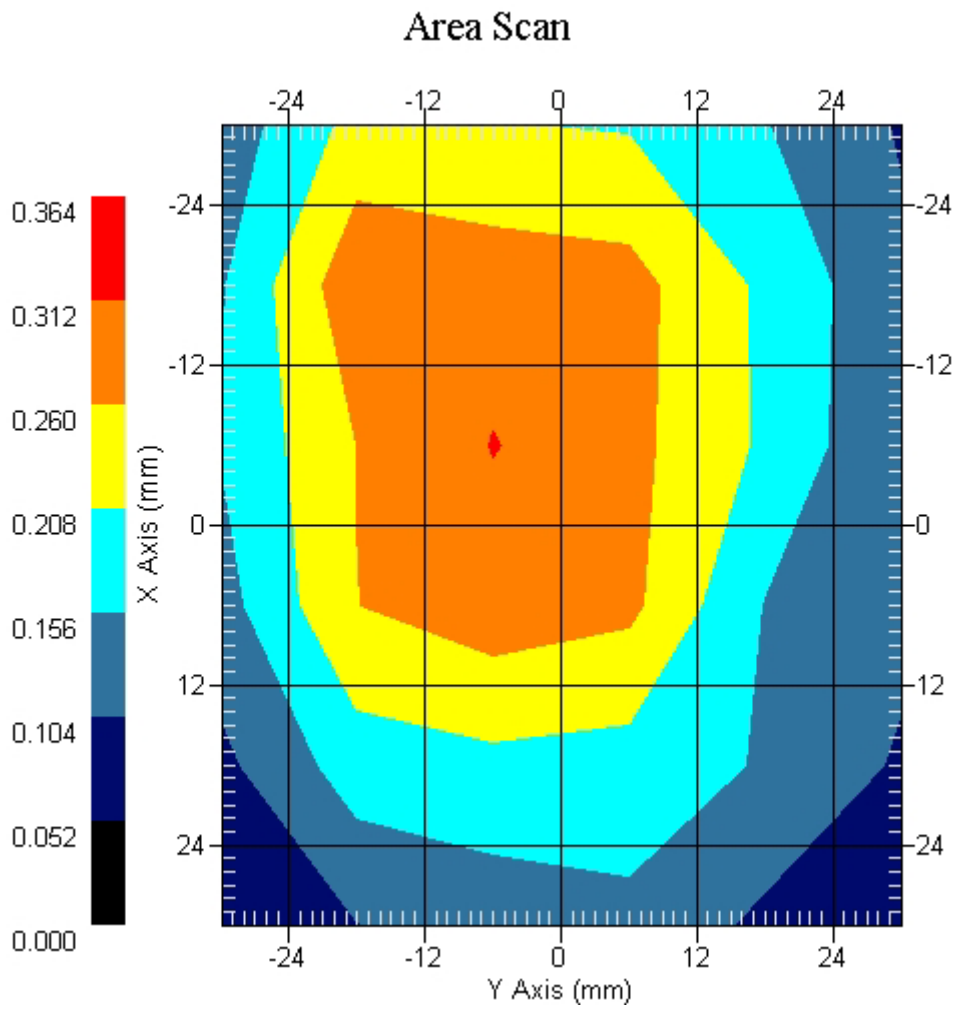
Measurement Data

Crest Factor : 8
Tissue Temp. : 21.10 °C
Ambient Temp. : 22.40 °C
Area Scan : 6x6x1 : Measurement x=12mm, y=12mm, z=4mm
Zoom Scan : 7x7x7 : Measurement x=5mm, y=5mm, z=5mm
Power Drift-Start : 0.204 W/kg
Power Drift-Finish: 0.195 W/kg
Power Drift (%) : -4.411

DUT Position : Touch
Channel : 128



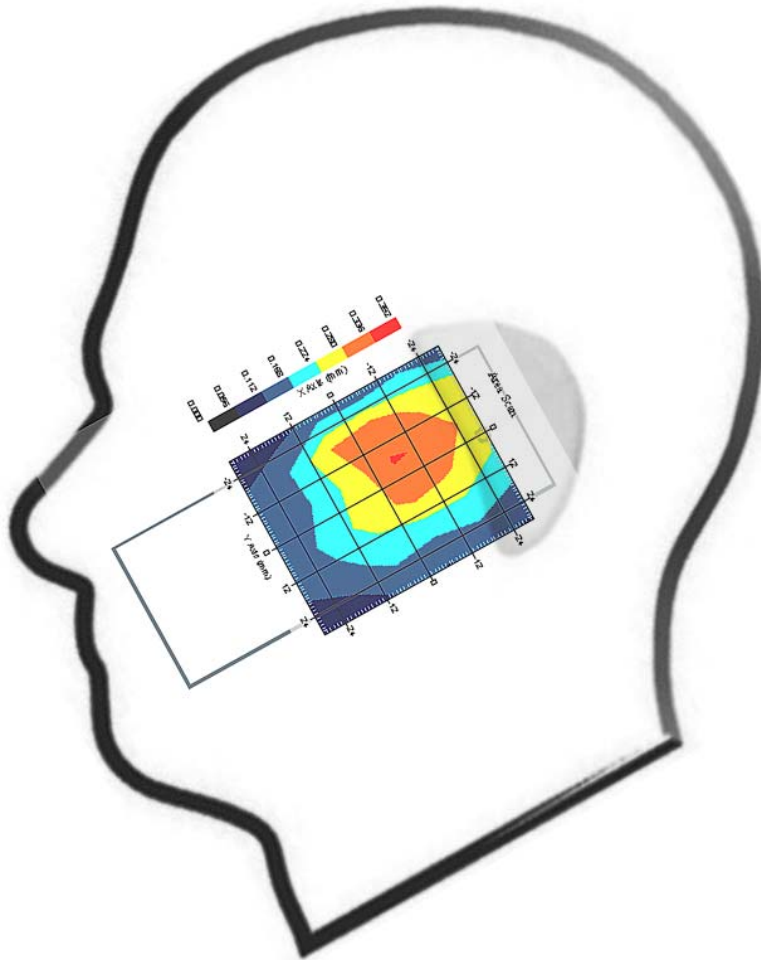
1 gram SAR value : 0.297 W/kg
10 gram SAR value : 0.188 W/kg
Area Scan Peak SAR : 0.314 W/kg
Zoom Scan Peak SAR : 0.500 W/kg



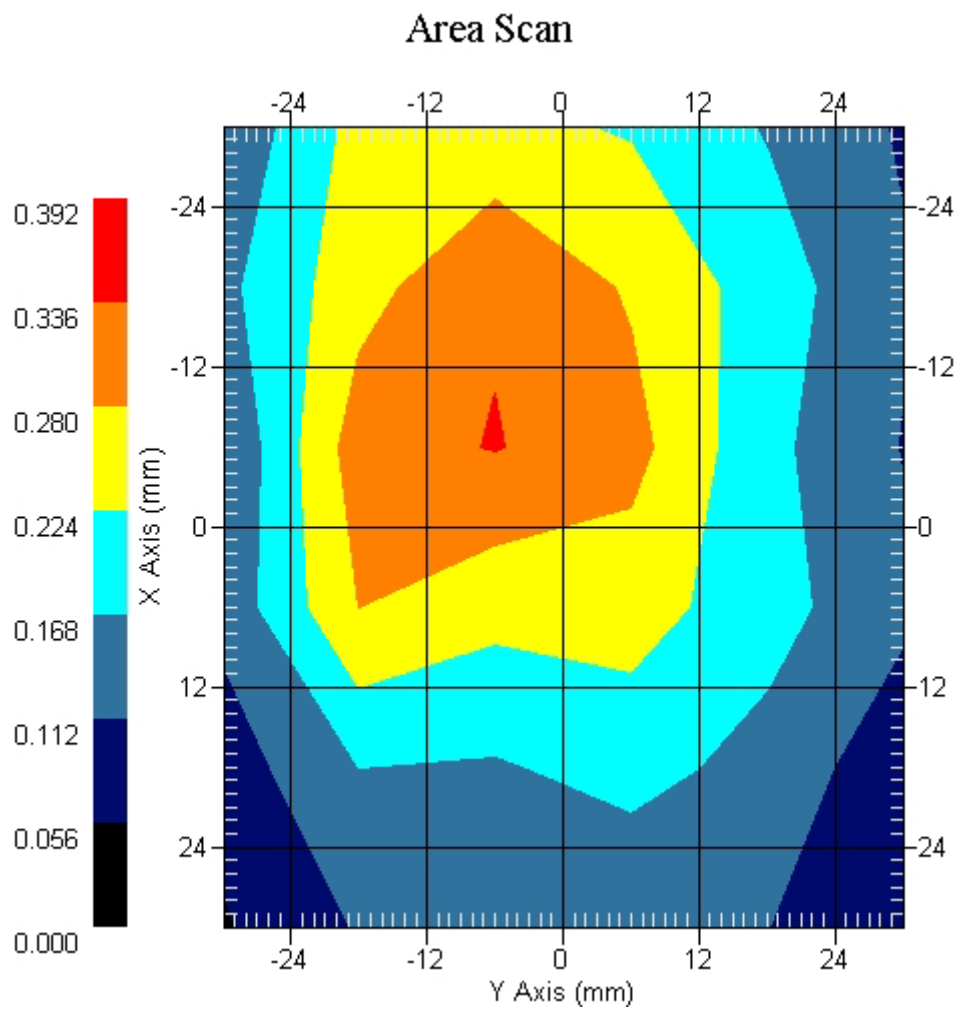
Measurement Data

Crest Factor : 8
Tissue Temp. : 21.10 °C
Ambient Temp. : 22.40 °C
Area Scan : 6x6x1 : Measurement x=12mm, y=12mm, z=4mm
Zoom Scan : 7x7x7 : Measurement x=5mm, y=5mm, z=5mm
Power Drift-Start : 0.213 W/kg
Power Drift-Finish: 0.205 W/kg
Power Drift (%) : -3.755

DUT Position : Touch
Channel : 189



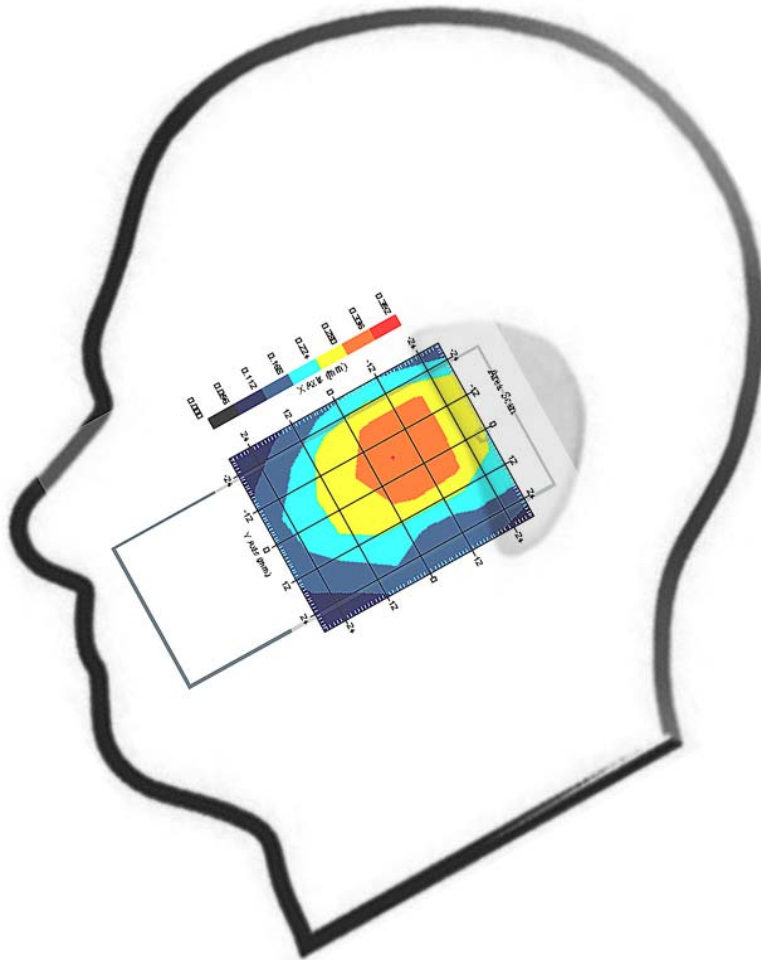
1 gram SAR value : 0.288 W/kg
10 gram SAR value : 0.182 W/kg
Area Scan Peak SAR : 0.339 W/kg
Zoom Scan Peak SAR : 0.490 W/kg



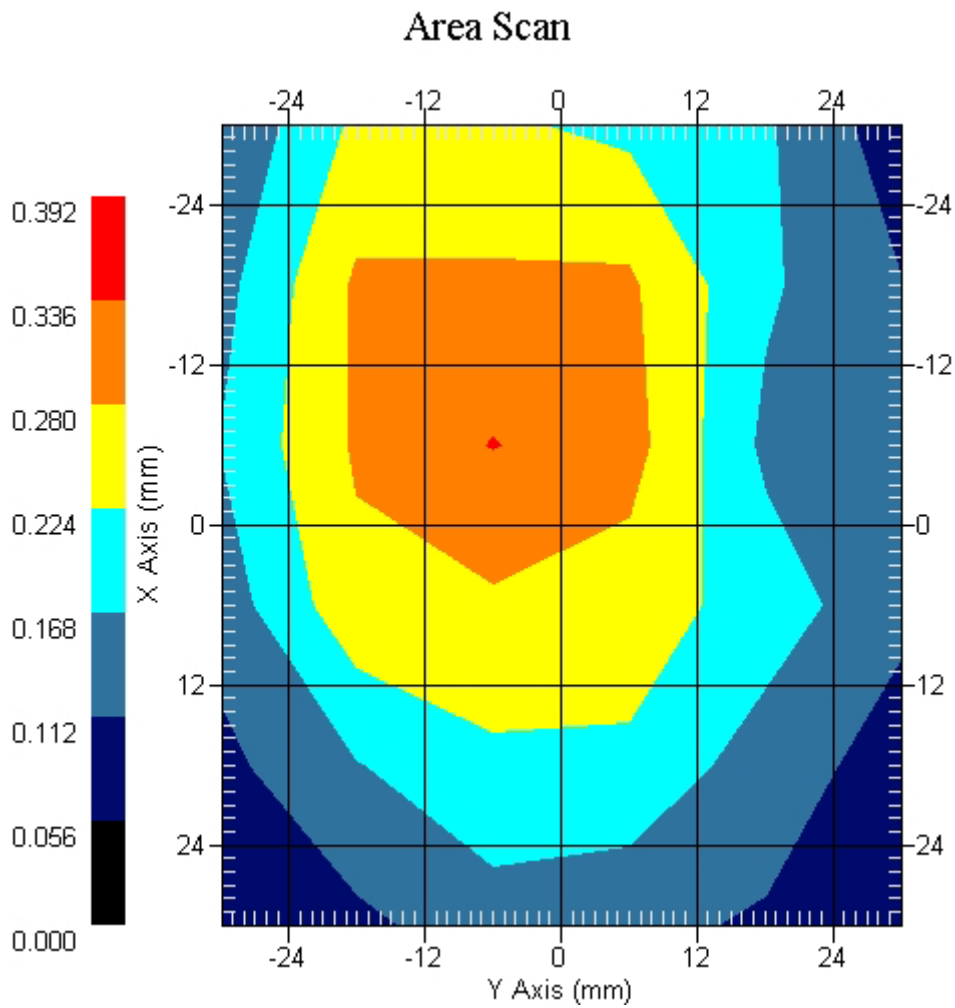
Measurement Data

Crest Factor : 8
Tissue Temp. : 21.10 °C
Ambient Temp. : 22.40 °C
Area Scan : 6x6x1 : Measurement x=12mm, y=12mm, z=4mm
Zoom Scan : 7x7x7 : Measurement x=5mm, y=5mm, z=5mm
Power Drift-Start : 0.232 W/kg
Power Drift-Finish: 0.241 W/kg
Power Drift (%) : 3.879

DUT Position : Touch
Channel : 251



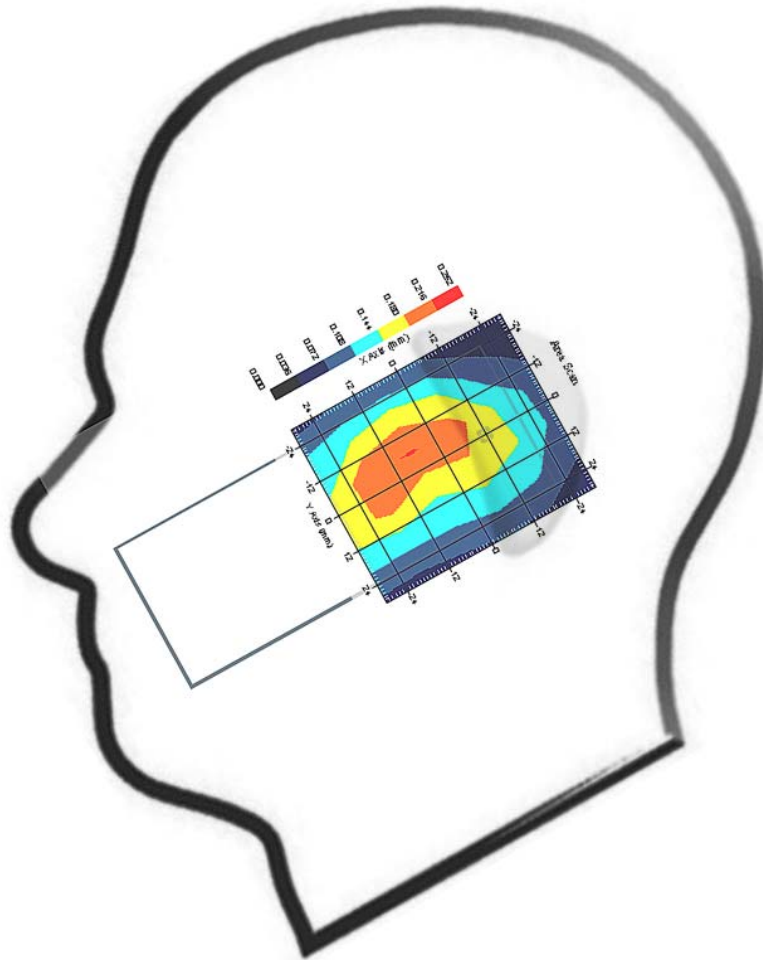
1 gram SAR value : 0.327 W/kg
10 gram SAR value : 0.210 W/kg
Area Scan Peak SAR : 0.338 W/kg
Zoom Scan Peak SAR : 0.520 W/kg



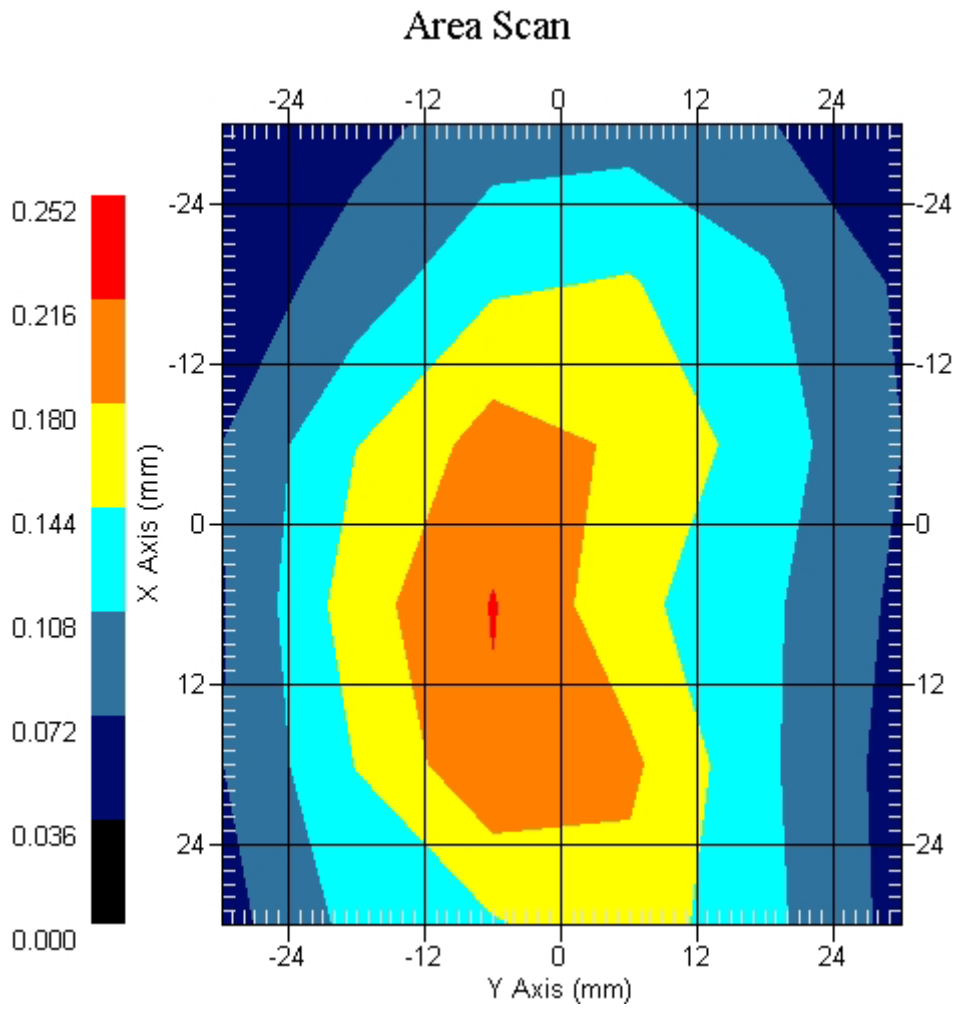
Measurement Data

Crest Factor : 8
Tissue Temp. : 21.10 °C
Ambient Temp. : 22.40 °C
Area Scan : 6x6x1 : Measurement x=12mm, y=12mm, z=4mm
Zoom Scan : 7x7x7 : Measurement x=5mm, y=5mm, z=5mm
Power Drift-Start : 0.176 W/kg
Power Drift-Finish: 0.181 W/kg
Power Drift (%) : 2.732

DUT Position : 15° Tilt
Channel : 128



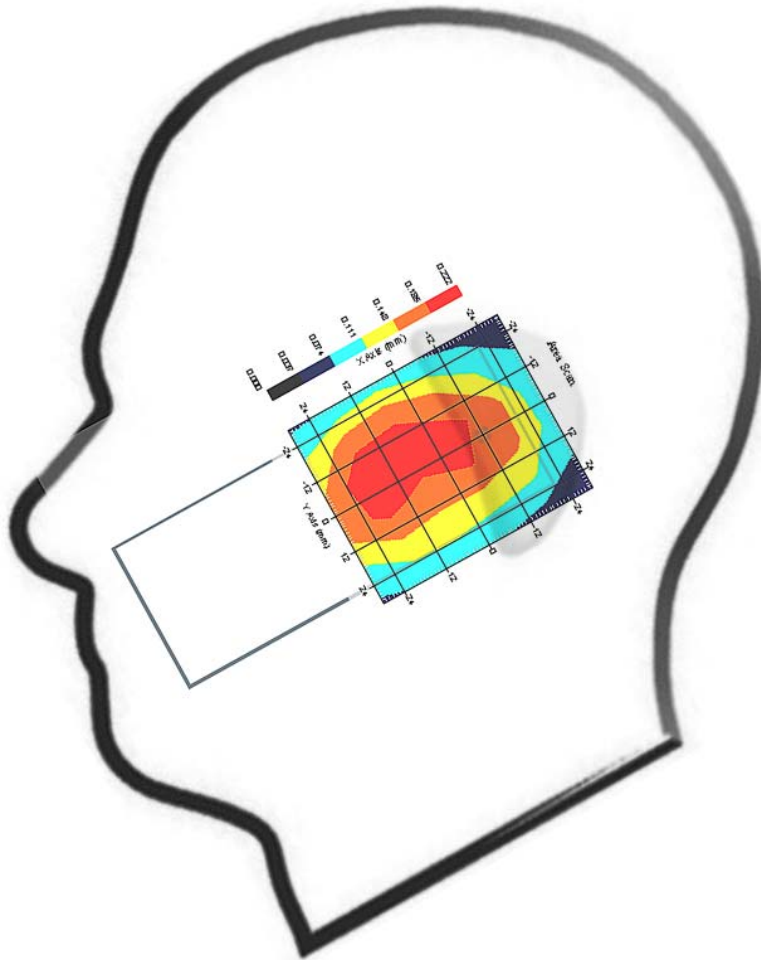
1 gram SAR value : 0.173 W/kg
10 gram SAR value : 0.142 W/kg
Area Scan Peak SAR : 0.218 W/kg
Zoom Scan Peak SAR : 0.310 W/kg



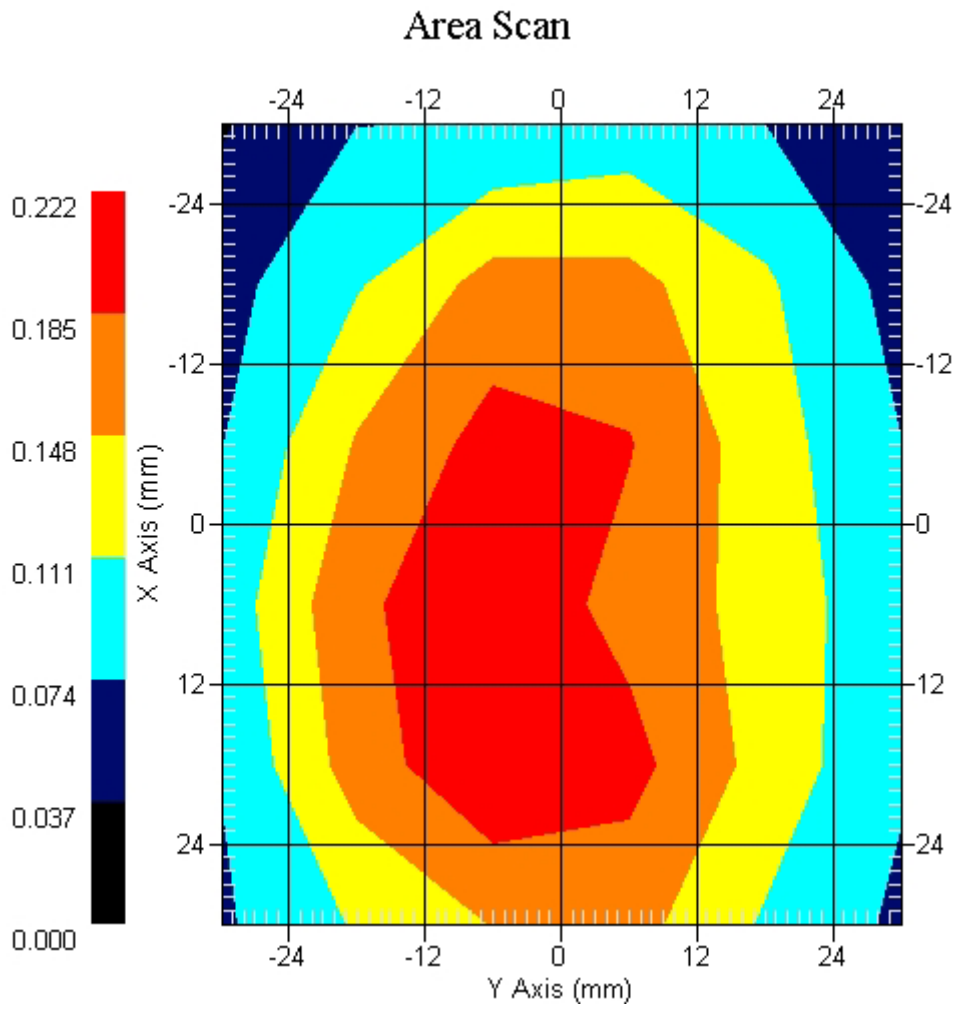
Measurement Data

Crest Factor : 8
Tissue Temp. : 21.10 °C
Ambient Temp. : 22.40 °C
Area Scan : 6x6x1 : Measurement x=12mm, y=12mm, z=4mm
Zoom Scan : 7x7x7 : Measurement x=5mm, y=5mm, z=5mm
Power Drift-Start : 0.171 W/kg
Power Drift-Finish: 0.179 W/kg
Power Drift (%) : 4.678

DUT Position : 15° Tilt
Channel : 189



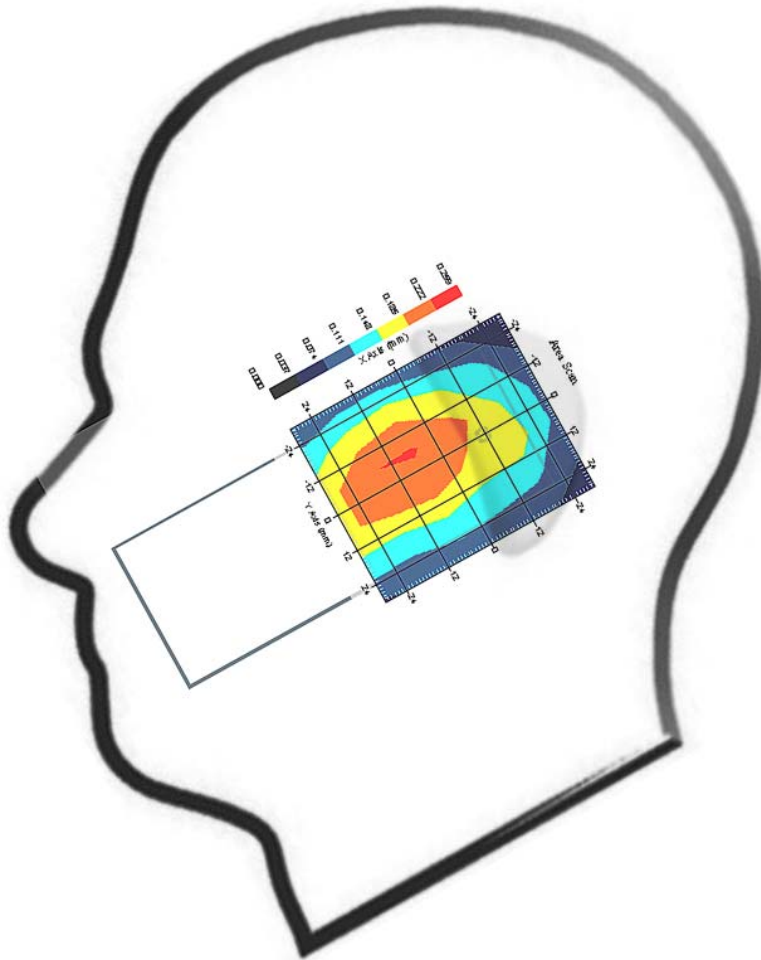
1 gram SAR value : 0.213 W/kg
10 gram SAR value : 0.146 W/kg
Area Scan Peak SAR : 0.220 W/kg
Zoom Scan Peak SAR : 0.320 W/kg



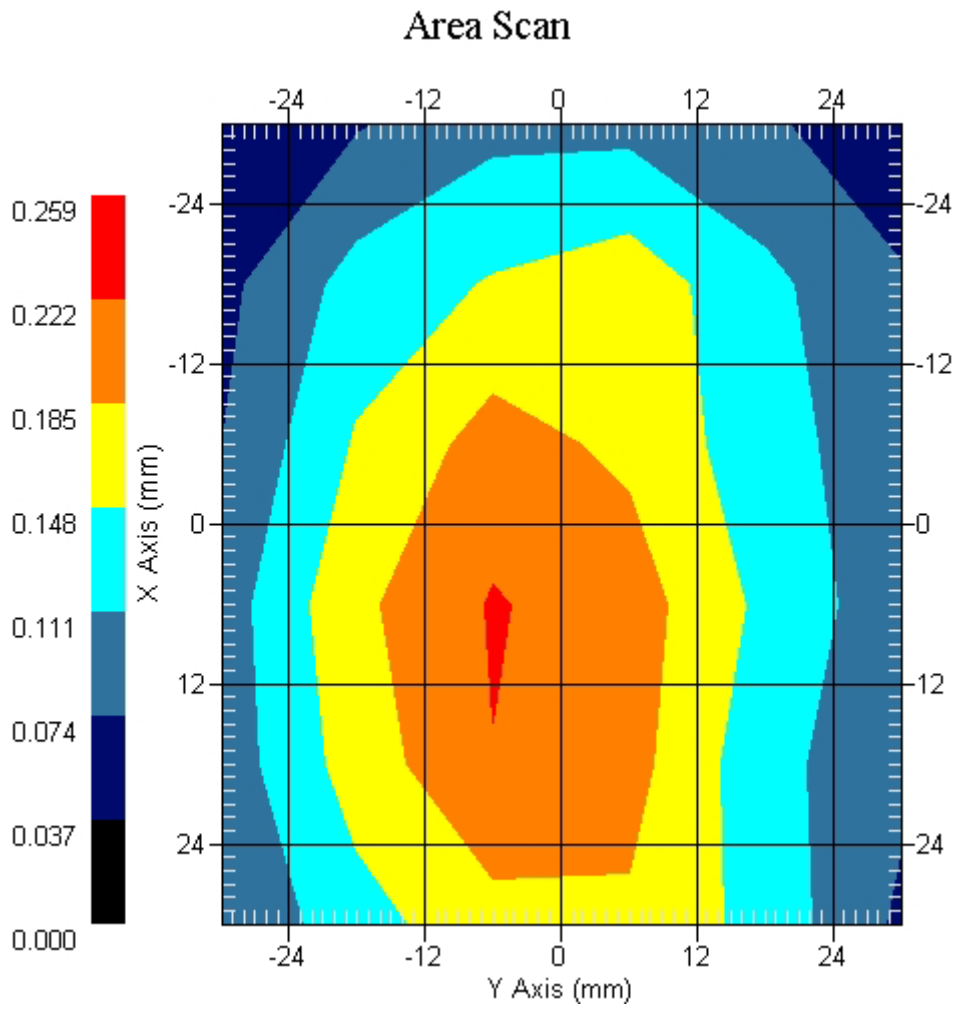
Measurement Data

Crest Factor : 8
Tissue Temp. : 21.10 °C
Ambient Temp. : 22.40 °C
Area Scan : 6x6x1 : Measurement x=12mm, y=12mm, z=4mm
Zoom Scan : 7x7x7 : Measurement x=5mm, y=5mm, z=5mm
Power Drift-Start : 0.193 W/kg
Power Drift-Finish: 0.196 W/kg
Power Drift (%) : 1.633

DUT Position : 15° Tilt
Channel : 251



1 gram SAR value : 0.223 W/kg
10 gram SAR value : 0.149 W/kg
Area Scan Peak SAR : 0.225 W/kg
Zoom Scan Peak SAR : 0.320 W/kg



ALSAS-10U VER 2.3.2 APREL Laboratories

SAR Test Report-GSM 850

Report Date : 10-Aug-2007
Measurement Date : 10-Aug-2007

Product Data

Device Name : Mobile Phone
Type : Std Form Cell Phone
Model : WIGO 880i
Frequency : 850.00 MHz
Max. Transmit Pwr : 2 W
Drift Time : 0 min(s)
Length : 125.3 mm
Width : 49.1 mm
Depth : 21 mm
Antenna Type : Internal

Phantom Data

Type : SAM-Left
Size (mm) : 280 x 280 x 280
Location : Left

Tissue Data

Type : HEAD
Serial No. : 322-H
Frequency : 850.00 MHz
Last Calib. Date : 10-Aug-2007
Temperature : 21.10 °C
Ambient Temp. : 22.40 °C
Humidity : 46.00 RH%
Epsilon : 41.63 F/m
Sigma : 0.912 S/m
Density : 1000.00 kg/cu. m

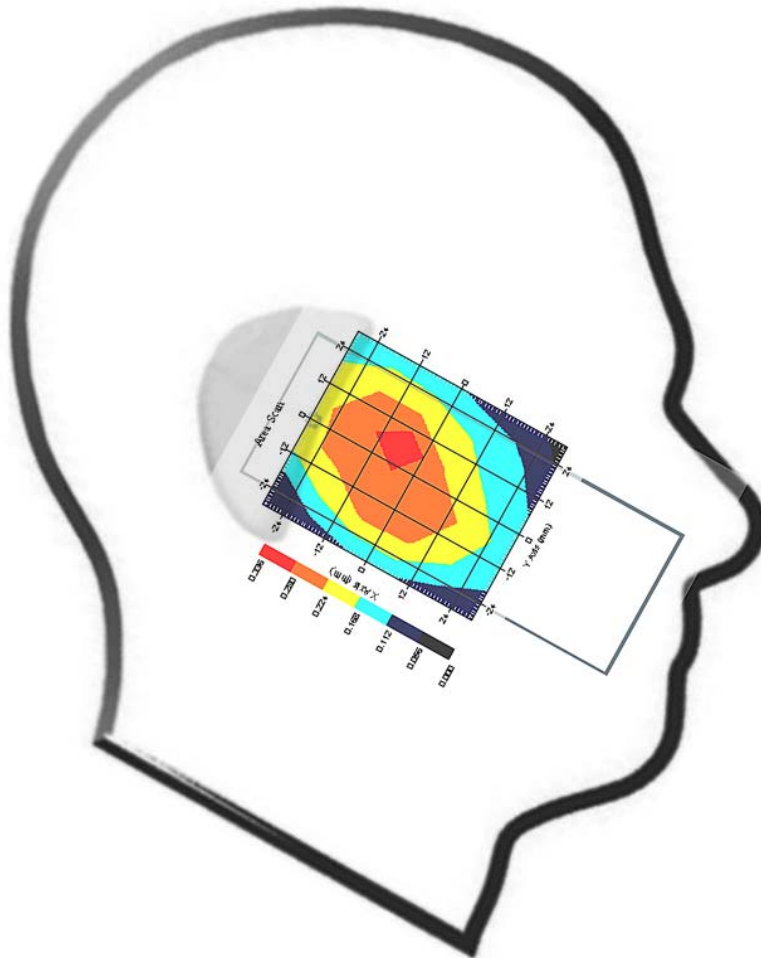
Probe Data

Name : Probe 261
Model : E020
Type : E-Field Triangle
Serial No. : 261
Last Calib. Date : 05-Apr-2007
Frequency : 835.00 MHz
Duty Cycle Factor: 8
Conversion Factor: 6.6
Probe Sensitivity: 1.20 1.20 1.20 $\mu\text{V}/(\text{V}/\text{m})^2$
Compression Point: 95.00 mV
Offset : 1.56 mm

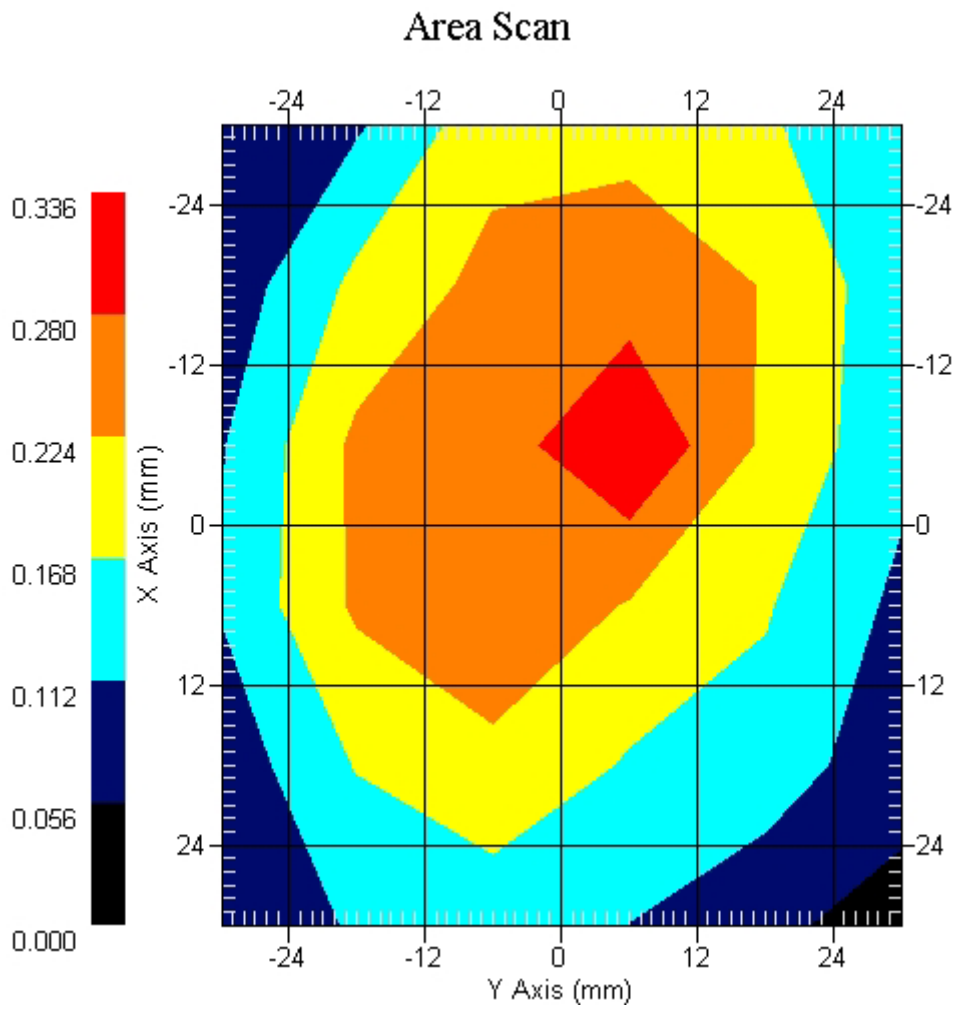
Measurement Data

Crest Factor : 8
Tissue Temp. : 21.10 °C
Ambient Temp. : 22.40 °C
Area Scan : 6x6x1 : Measurement x=12mm, y=12mm, z=4mm
Zoom Scan : 7x7x7 : Measurement x=5mm, y=5mm, z=5mm
Power Drift-Start : 0.178 W/kg
Power Drift-Finish: 0.180 W/kg
Power Drift (%) : 1.196

DUT Position : Touch
Channel : 128



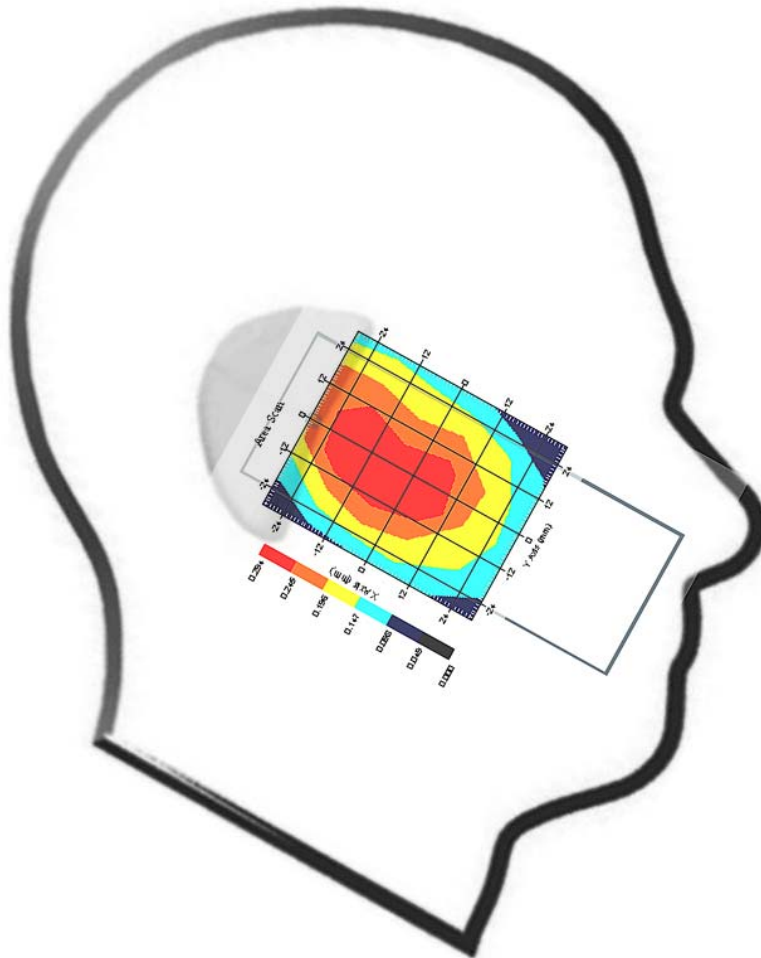
1 gram SAR value : 0.287 W/kg
10 gram SAR value : 0.237 W/kg
Area Scan Peak SAR : 0.333 W/kg
Zoom Scan Peak SAR : 0.350 W/kg



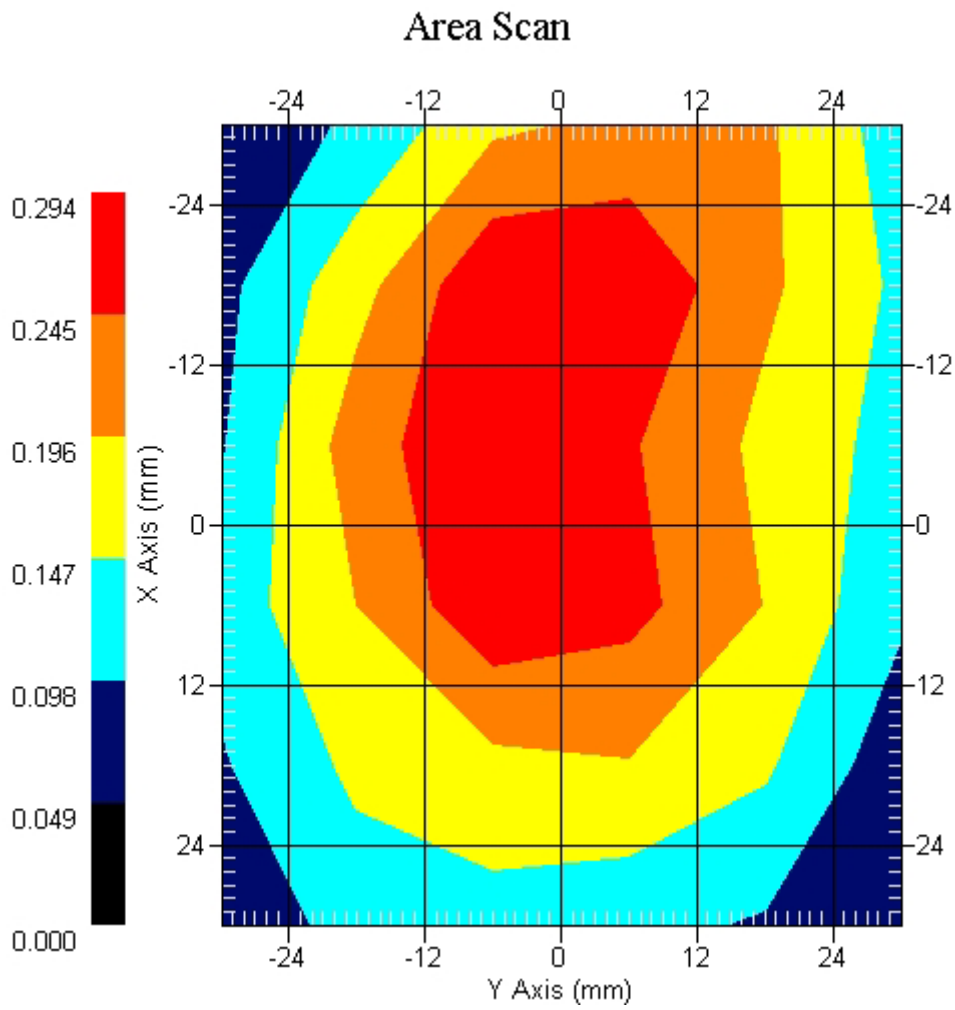
Measurement Data

Crest Factor : 8
Tissue Temp. : 21.10 °C
Ambient Temp. : 22.40 °C
Area Scan : 6x6x1 : Measurement x=12mm, y=12mm, z=4mm
Zoom Scan : 7x7x7 : Measurement x=5mm, y=5mm, z=5mm
Power Drift-Start : 0.208 W/kg
Power Drift-Finish: 0.199 W/kg
Power Drift (%) : -4.326

DUT Position : Touch
Channel : 189



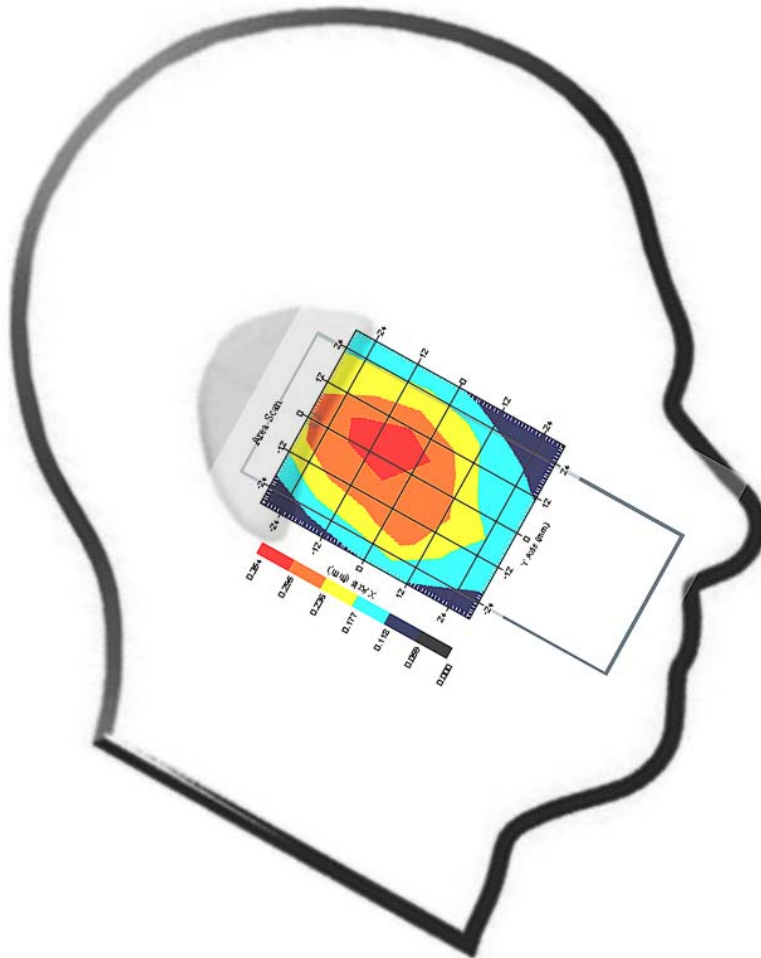
1 gram SAR value : 0.306 W/kg
10 gram SAR value : 0.198 W/kg
Area Scan Peak SAR : 0.294 W/kg
Zoom Scan Peak SAR : 0.500 W/kg



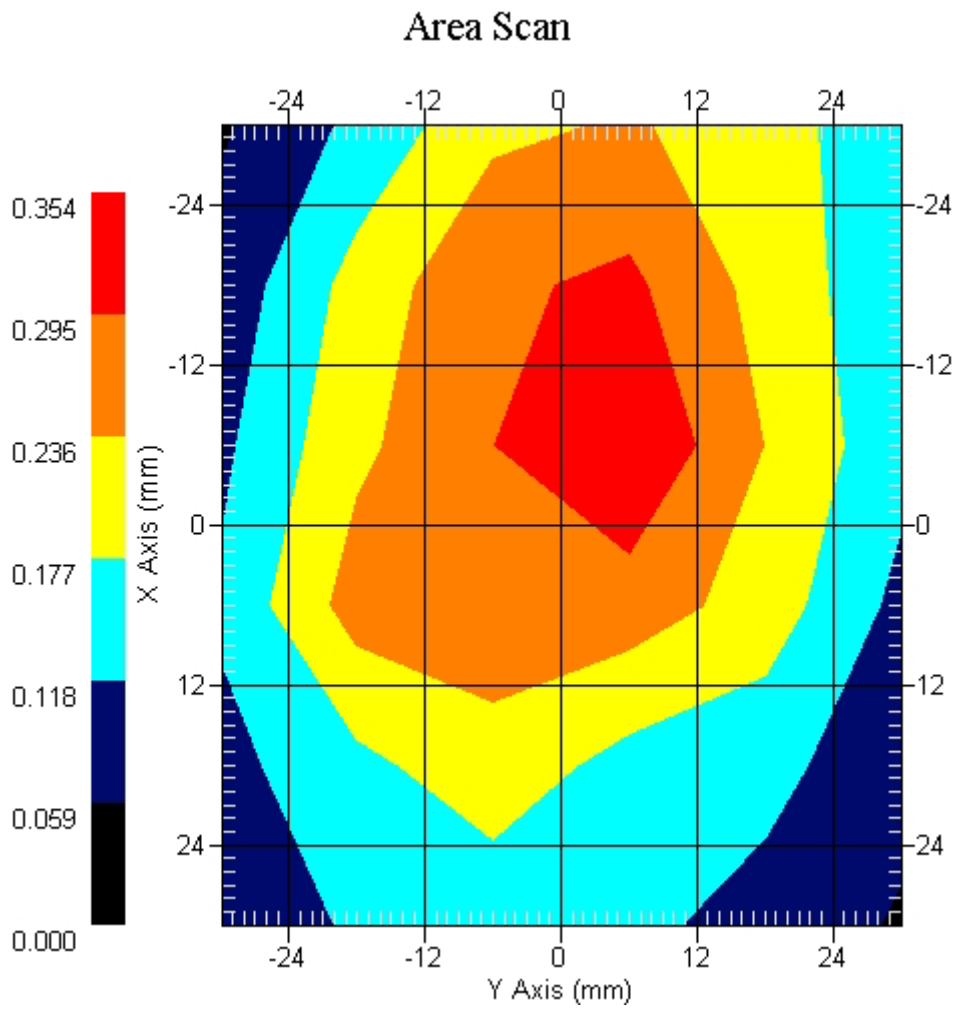
Measurement Data

Crest Factor : 8
Tissue Temp. : 21.10 °C
Ambient Temp. : 22.40 °C
Area Scan : 6x6x1 : Measurement x=12mm, y=12mm, z=4mm
Zoom Scan : 7x7x7 : Measurement x=5mm, y=5mm, z=5mm
Power Drift-Start : 0.192 W/kg
Power Drift-Finish: 0.199 W/kg
Power Drift (%) : 3.645

DUT Position : Touch
Channel : 251



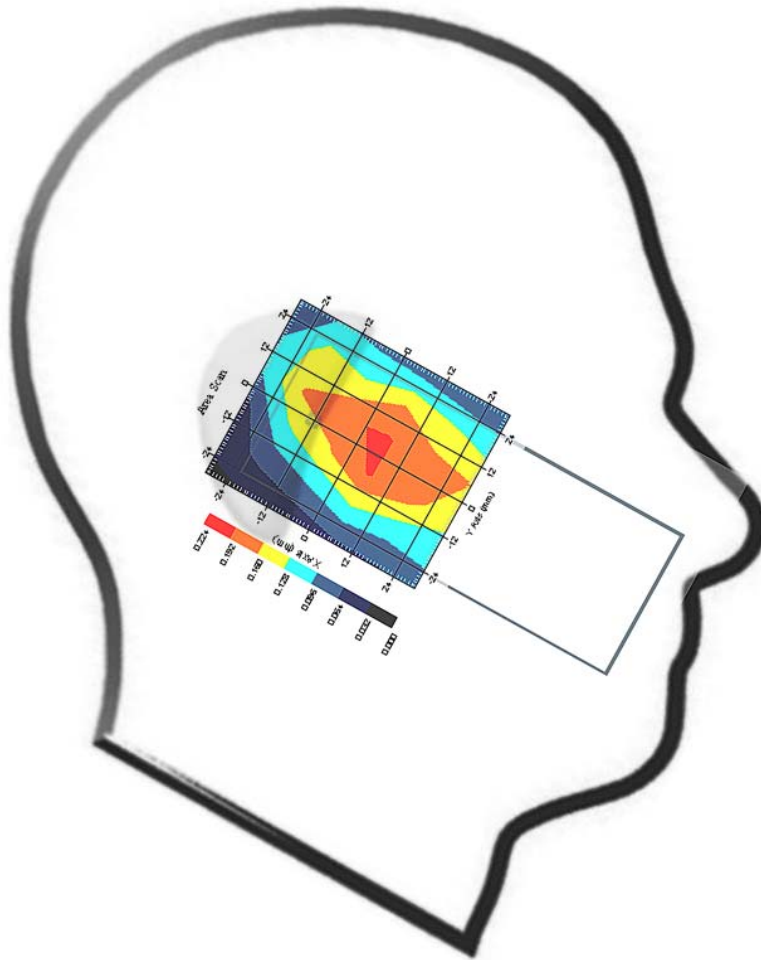
1 gram SAR value : 0.287 W/kg
10 gram SAR value : 0.196 W/kg
Area Scan Peak SAR : 0.352 W/kg
Zoom Scan Peak SAR : 0.420 W/kg



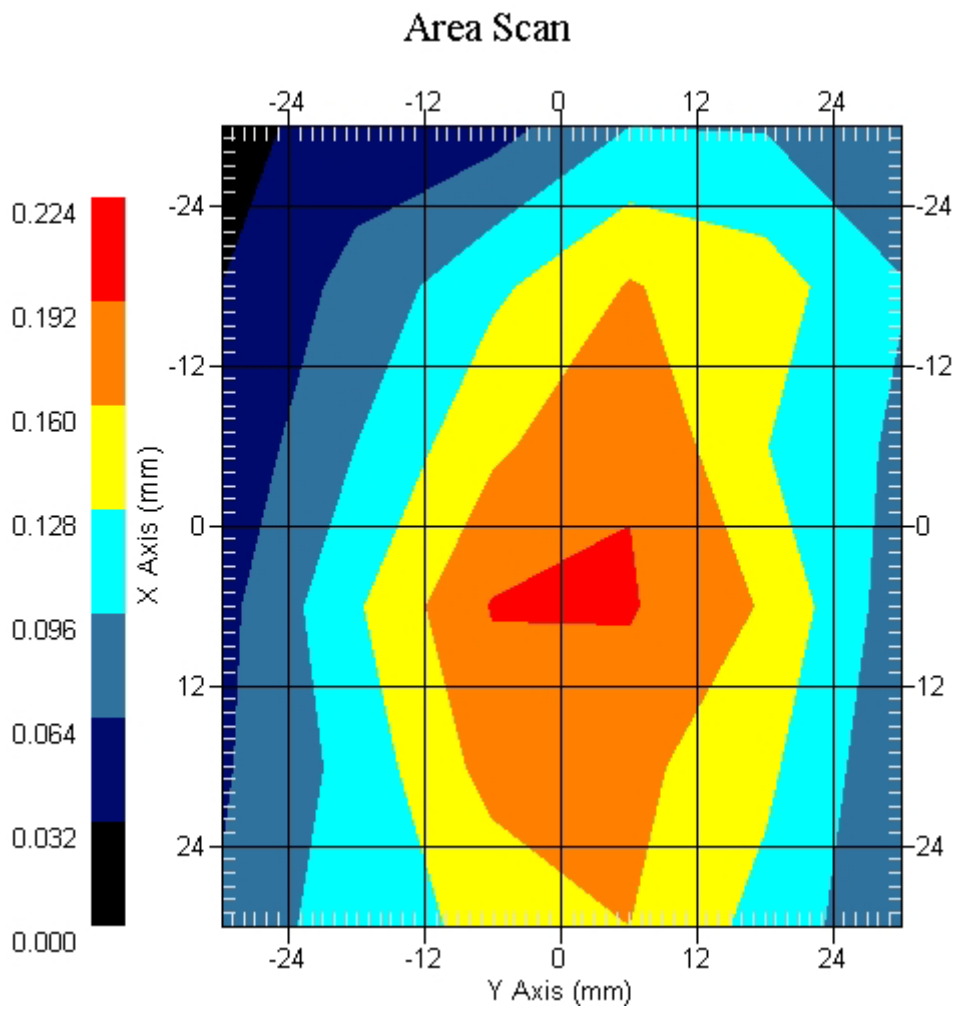
Measurement Data

Crest Factor : 8
Tissue Temp. : 21.10 °C
Ambient Temp. : 22.40 °C
Area Scan : 6x6x1 : Measurement x=12mm, y=12mm, z=4mm
Zoom Scan : 7x7x8 : Measurement x=5mm, y=5mm, z=5mm
Power Drift-Start : 0.168 W/kg
Power Drift-Finish: 0.168 W/kg
Power Drift (%) : -0.044

DUT Position : 15° Tilt
Channel : 128



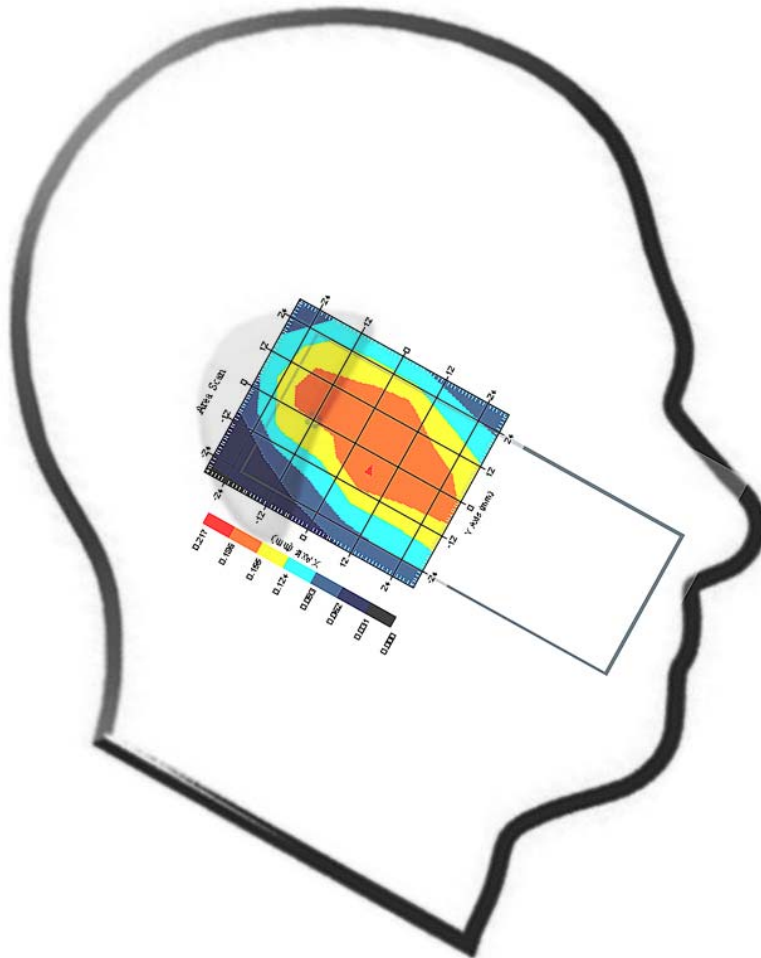
1 gram SAR value : 0.189 W/kg
10 gram SAR value : 0.129 W/kg
Area Scan Peak SAR : 0.195 W/kg
Zoom Scan Peak SAR : 0.280 W/kg



Measurement Data

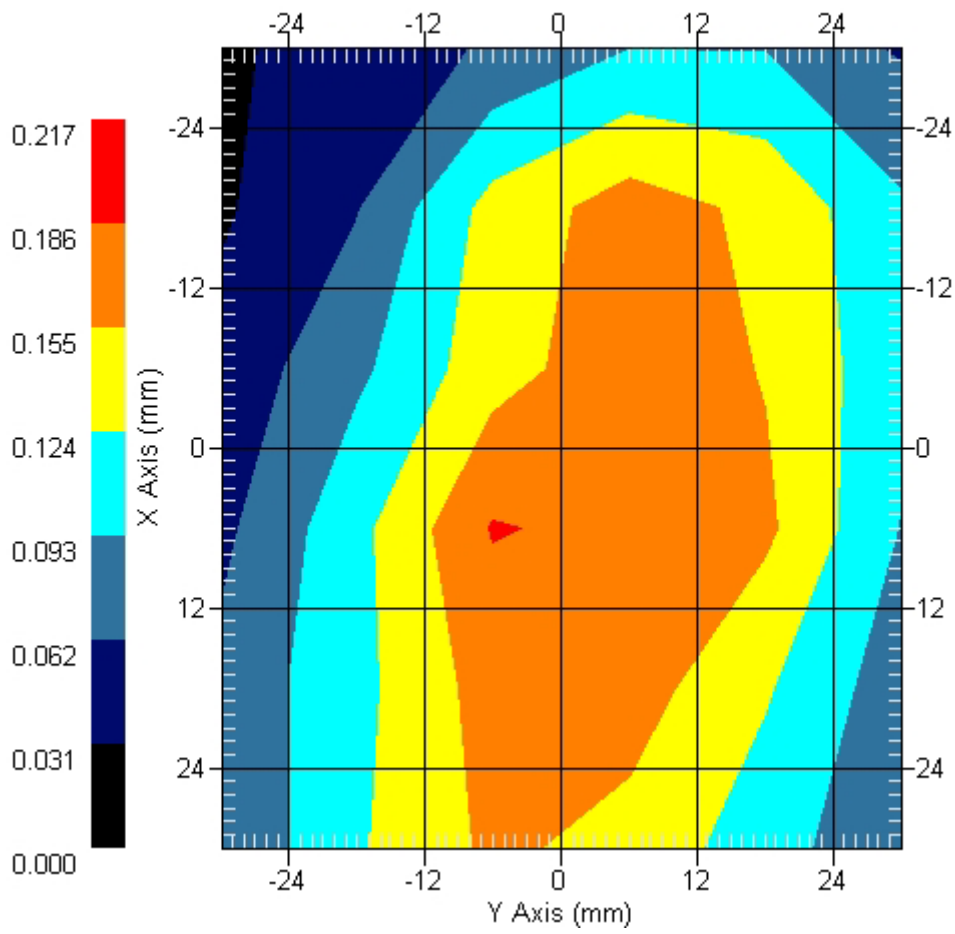
Crest Factor : 8
Tissue Temp. : 21.10 °C
Ambient Temp. : 22.40 °C
Area Scan : 6x6x1 : Measurement x=12mm, y=12mm, z=4mm
Zoom Scan : 7x7x7 : Measurement x=5mm, y=5mm, z=5mm
Power Drift-Start : 0.161 W/kg
Power Drift-Finish: 0.155 W/kg
Power Drift (%) : -3.990

DUT Position : 15° Tilt
Channel : 189



1 gram SAR value : 0.185 W/kg
10 gram SAR value : 0.128 W/kg
Area Scan Peak SAR : 0.188 W/kg
Zoom Scan Peak SAR : 0.280 W/kg

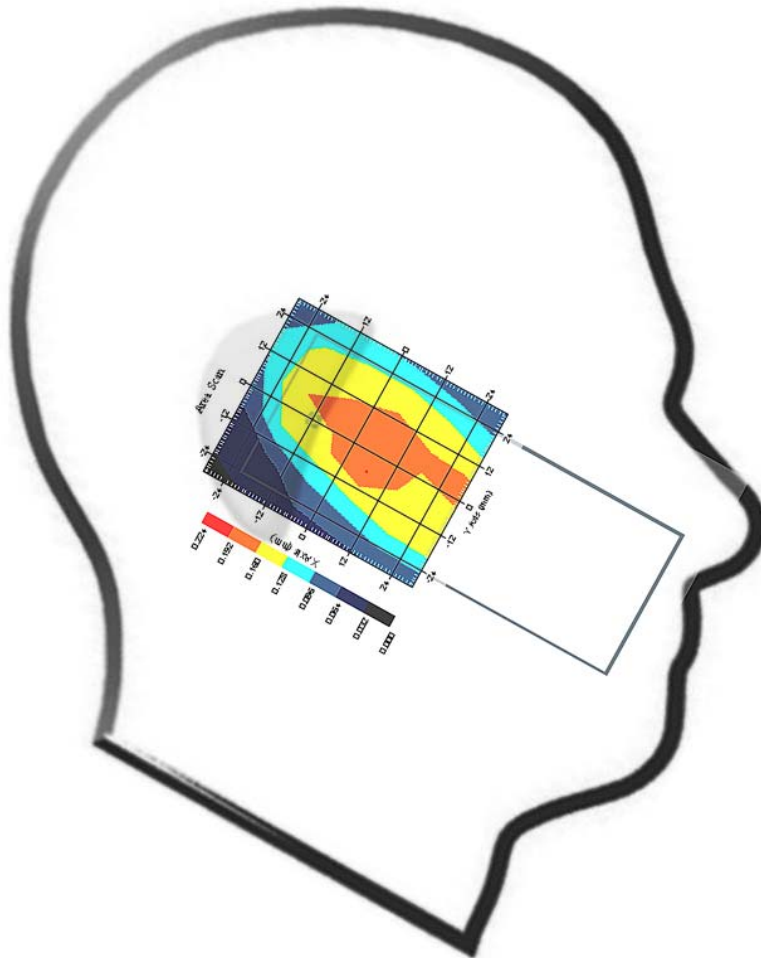
Area Scan



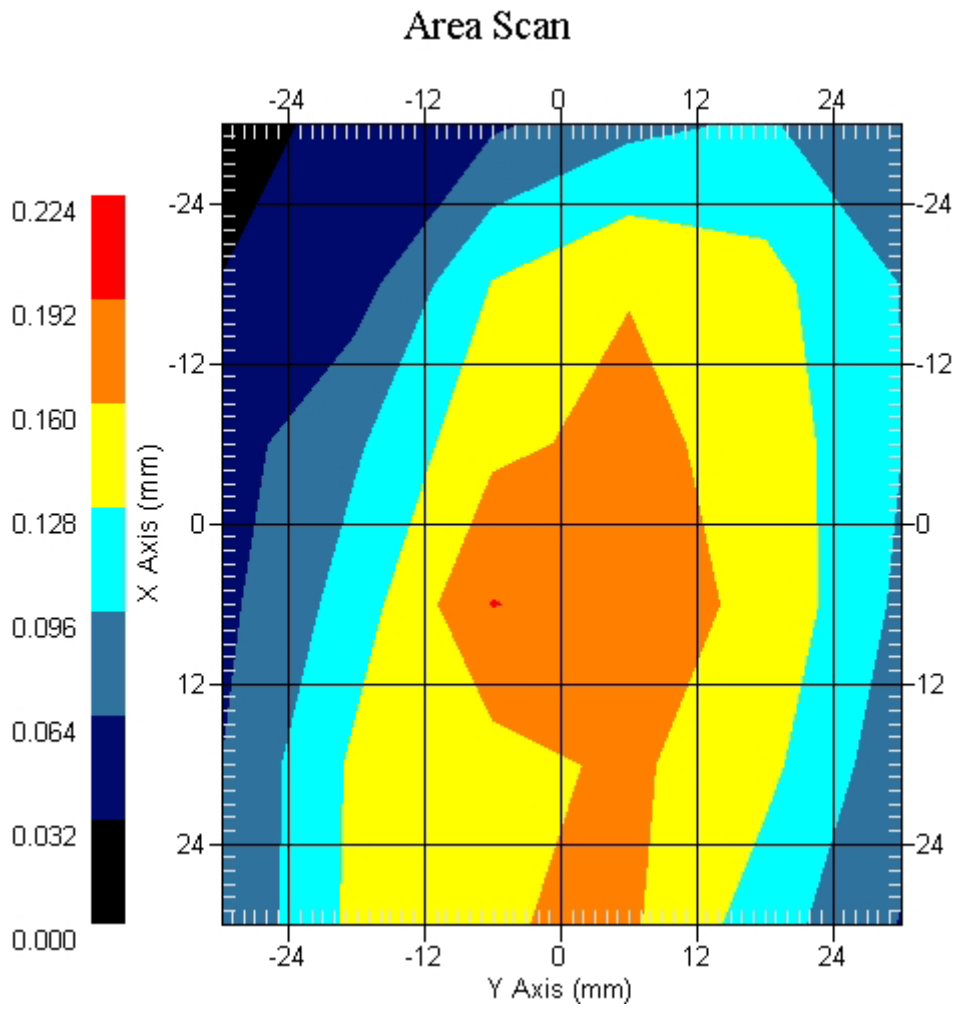
Measurement Data

Crest Factor : 8
Tissue Temp. : 21.10 °C
Ambient Temp. : 22.40 °C
Area Scan : 6x6x1 : Measurement x=12mm, y=12mm, z=4mm
Zoom Scan : 7x7x7 : Measurement x=5mm, y=5mm, z=5mm
Power Drift-Start : 0.194 W/kg
Power Drift-Finish: 0.186 W/kg
Power Drift (%) : -4.123

DUT Position : 15° Tilt
Channel : 251



1 gram SAR value : 0.172 W/kg
10 gram SAR value : 0.119 W/kg
Area Scan Peak SAR : 0.193 W/kg
Zoom Scan Peak SAR : 0.260 W/kg



ALSAS-10U VER 2.3.2 APREL Laboratories
SAR Test Report-GSM 850

Report Date : 10-Aug-2007
Measurement Date : 10-Aug-2007

Product Data

Device Name : Mobile Phone
Type : Std Form Cell Phone
Model : WIGO 880i
Frequency : 850.00 MHz
Max. Transmit Pwr : 2 W
Drift Time : 0 min(s)
Length : 125.3 mm
Width : 49.1 mm
Depth : 21 mm
Antenna Type : Internal

Phantom Data

Type : Uni-Phantom
Size (mm) : 280 x 280 x 200
Location : Center

Tissue Data

Type : BODY
Serial No. : 322-B
Frequency : 835.00 MHz
Last Calib. Date : 10-Aug-2007
Temperature : 21.10 °C
Ambient Temp. : 22.40 °C
Humidity : 46.00 RH%
Epsilon : 54.63 F/m
Sigma : 0.931 S/m
Density : 1000.00 kg/cu. m

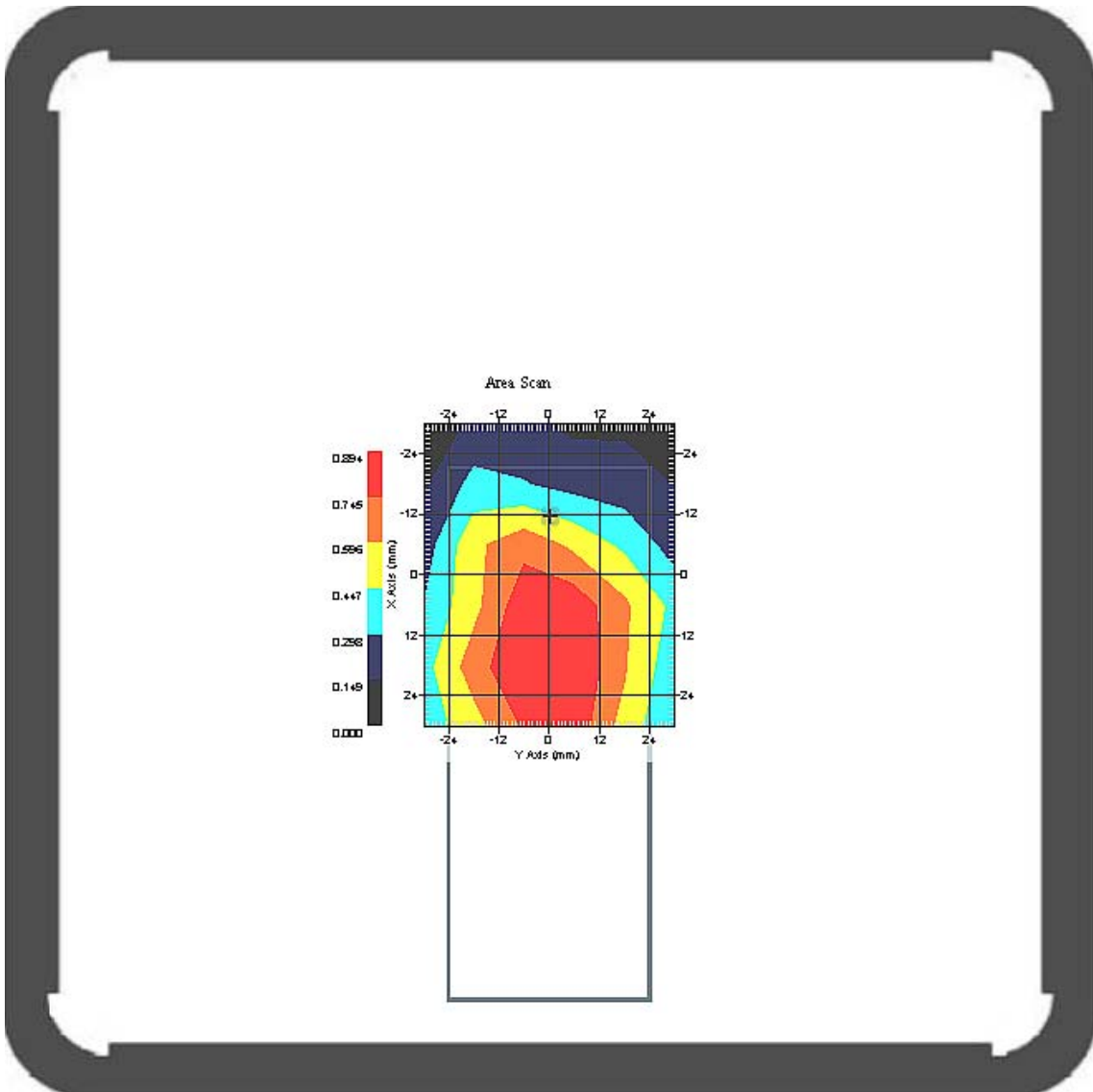
Probe Data

Name : Probe 261
Model : E020
Type : E-Field Triangle
Serial No. : 261
Last Calib. Date : 05-Apr-2007
Frequency : 835.00 MHz
Duty Cycle Factor: 8
Conversion Factor: 6.3
Probe Sensitivity: 1.20 1.20 1.20 $\mu\text{V}/(\text{V}/\text{m})^2$
Compression Point: 95.00 mV
Offset : 1.56 mm

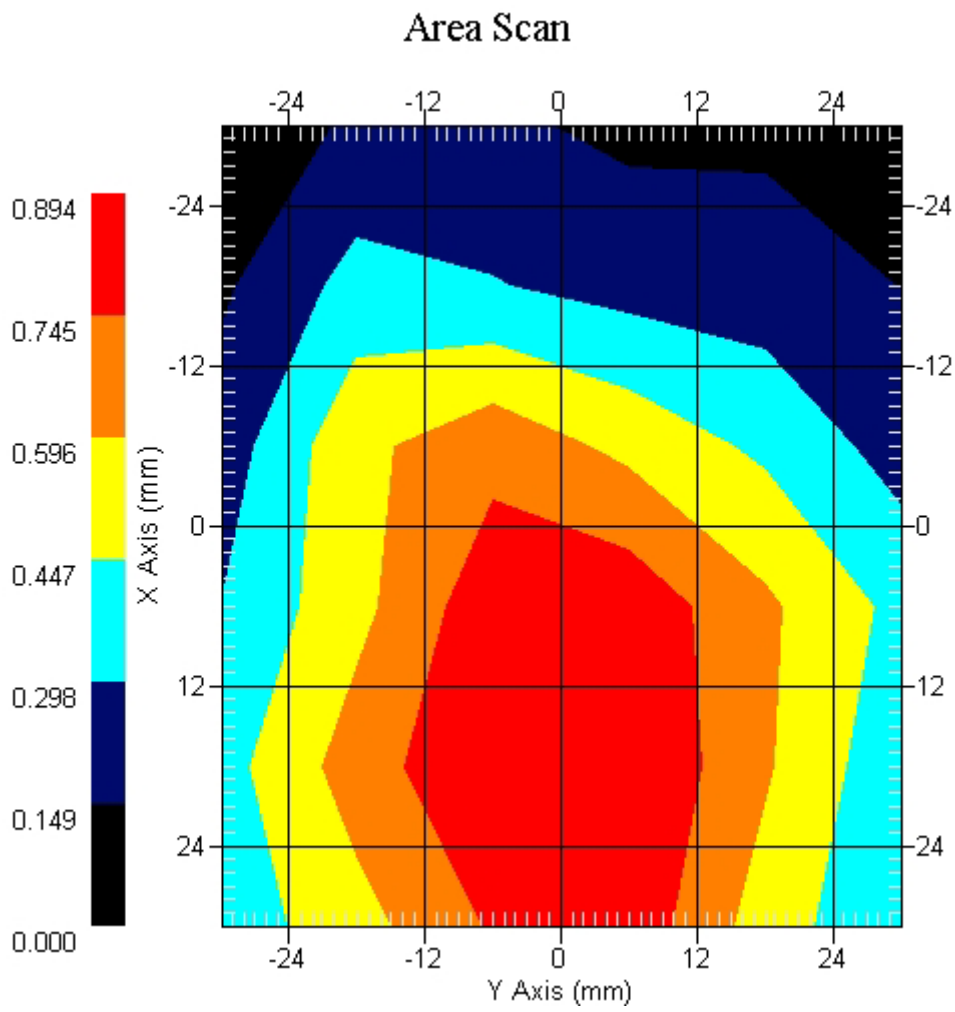
Measurement Data

Crest Factor : 8
 Tissue Temp. : 21.10 °C
 Ambient Temp. : 22.40 °C
 Area Scan : 6x6x1 : Measurement x=12mm, y=12mm, z=4mm
 Zoom Scan : 7x7x7 : Measurement x=5mm, y=5mm, z=5mm
 Power Drift-Start : 0.455 W/kg
 Power Drift-Finish: 0.449 W/kg
 Power Drift (%) : -1.318

DUT Position : Touch
 Channel : 128



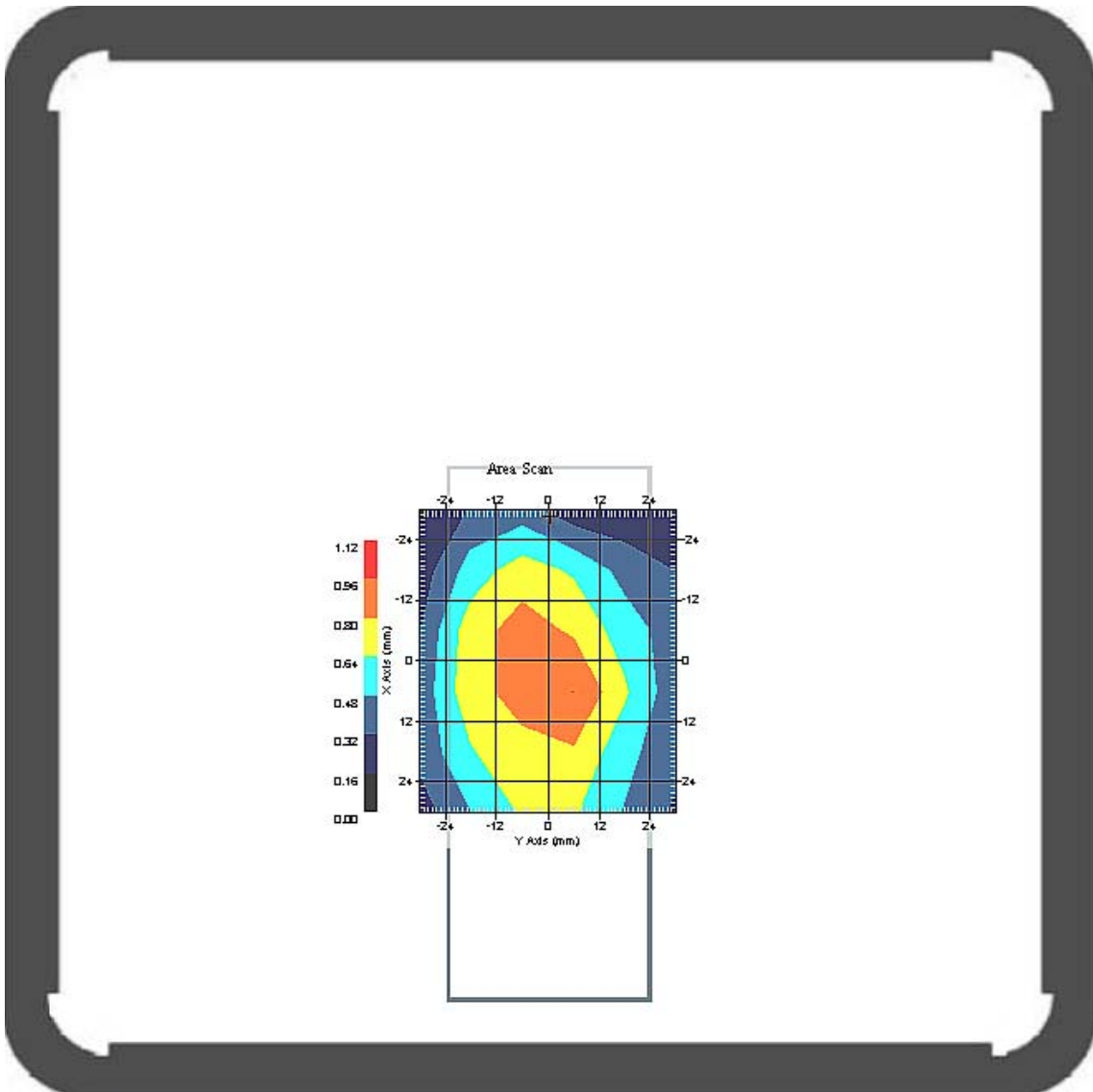
1 gram SAR value : 0.838 W/kg
 10 gram SAR value : 0.571 W/kg
 Area Scan Peak SAR : 0.892 W/kg
 Zoom Scan Peak SAR : 1.131 W/kg



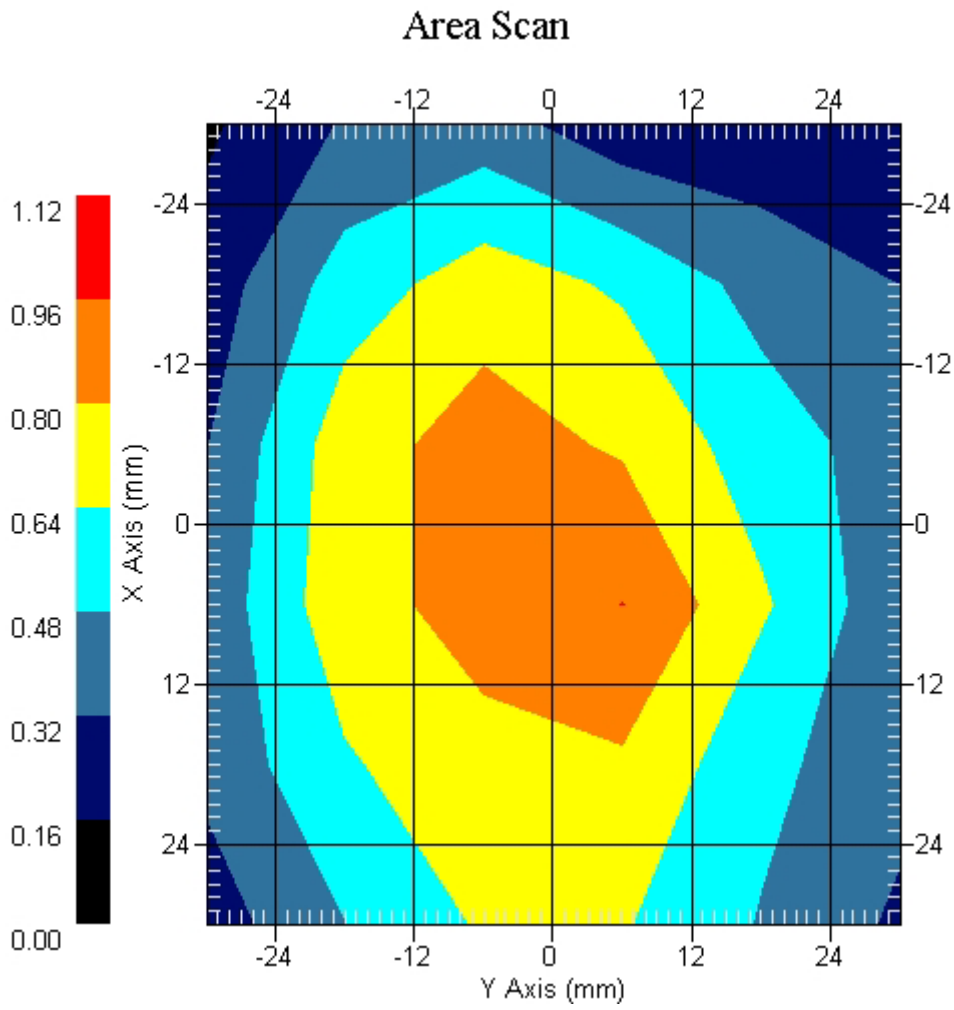
Measurement Data

Crest Factor : 8
 Tissue Temp. : 21.10 °C
 Ambient Temp. : 22.40 °C
 Area Scan : 6x6x1 : Measurement x=12mm, y=12mm, z=4mm
 Zoom Scan : 7x7x7 : Measurement x=5mm, y=5mm, z=5mm
 Power Drift-Start : 0.449 W/kg
 Power Drift-Finish: 0.436 W/kg
 Power Drift (%) : -2.880

DUT Position : Touch
 Channel : 189



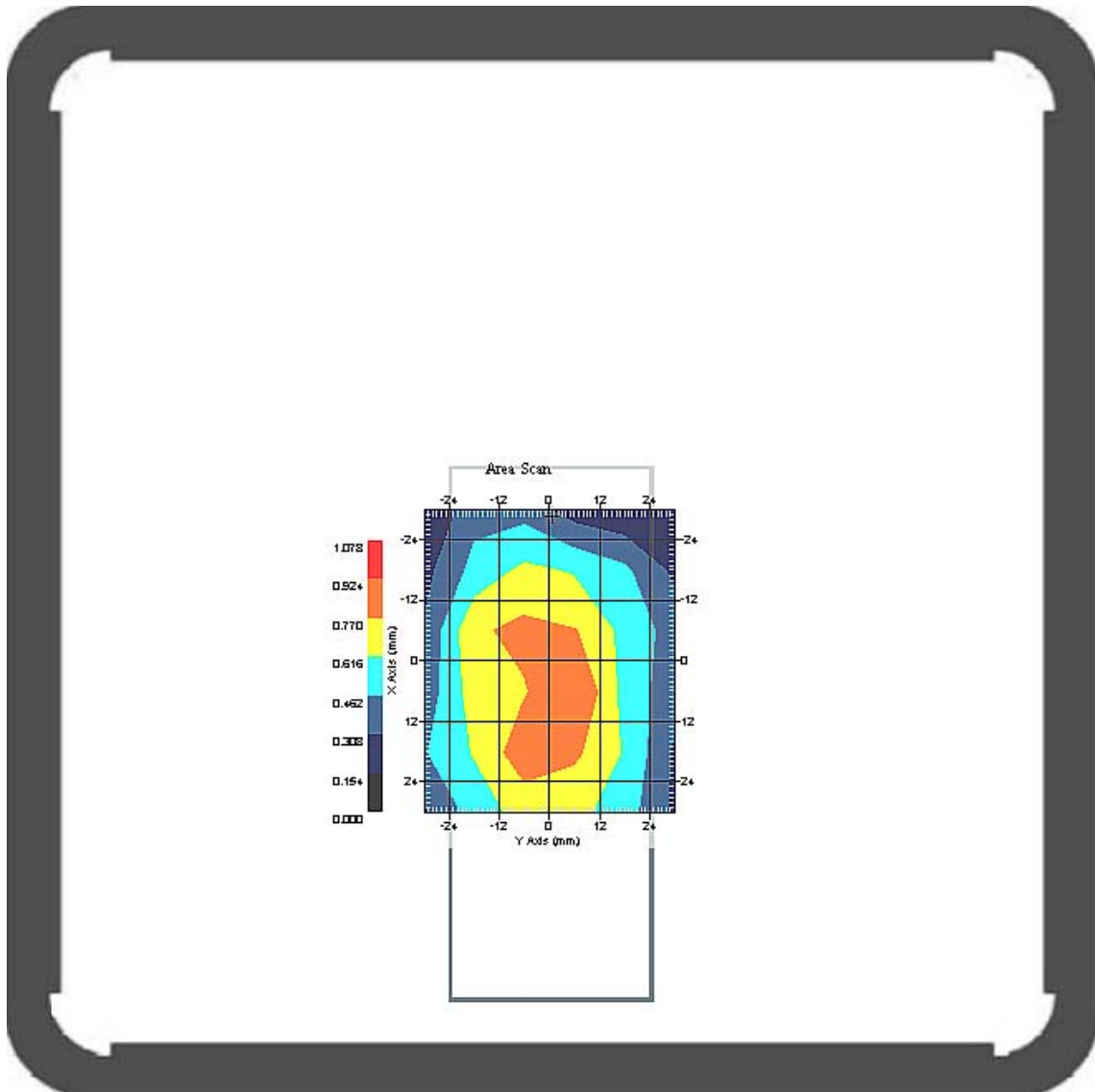
1 gram SAR value : 0.936 W/kg
 10 gram SAR value : 0.632 W/kg
 Area Scan Peak SAR : 0.962 W/kg
 Zoom Scan Peak SAR : 1.341 W/kg



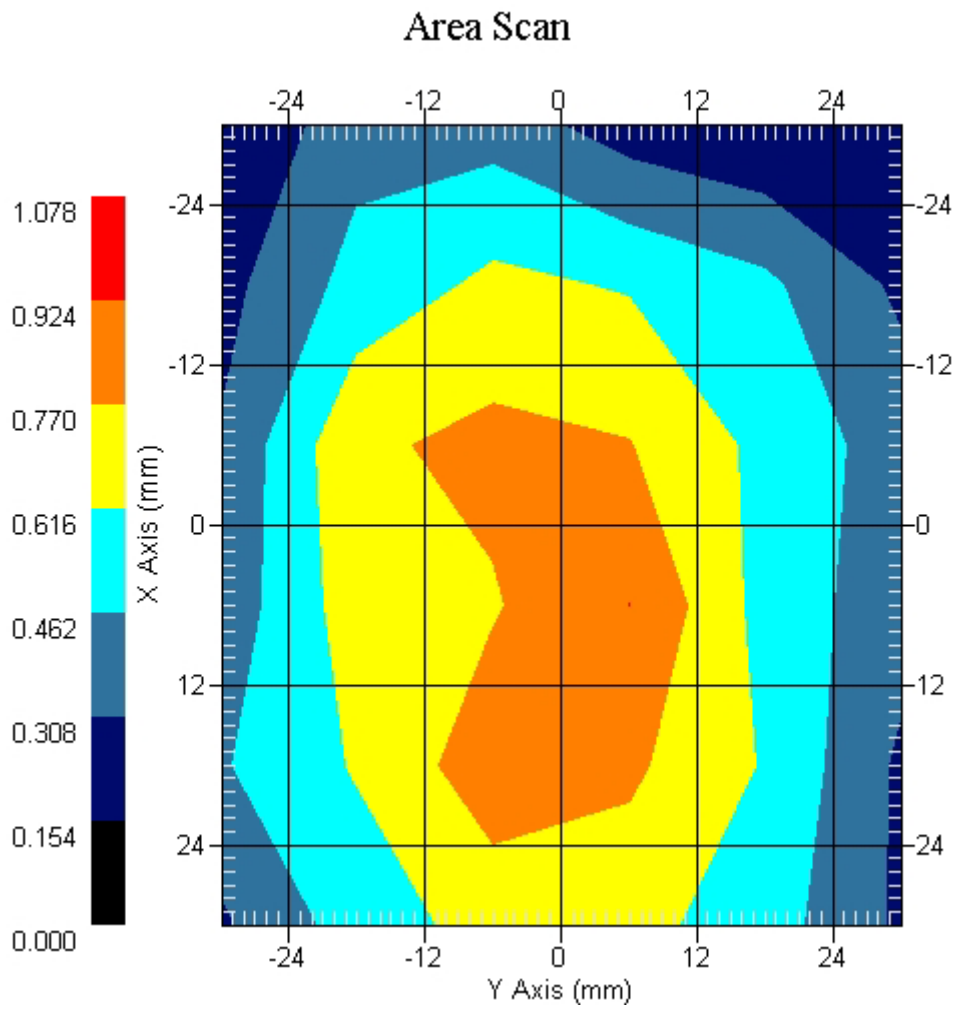
Measurement Data

Crest Factor : 8
Tissue Temp. : 21.10 °C
Ambient Temp. : 22.40 °C
Area Scan : 6x6x1 : Measurement x=12mm, y=12mm, z=4mm
Zoom Scan : 7x7x7 : Measurement x=5mm, y=5mm, z=5mm
Power Drift-Start : 0.419 W/kg
Power Drift-Finish: 0.428 W/kg
Power Drift (%) : 2.147

DUT Position : Touch
Channel : 251



1 gram SAR value : 0.860 W/kg
10 gram SAR value : 0.580 W/kg
Area Scan Peak SAR : 0.925 W/kg
Zoom Scan Peak SAR : 1.481 W/kg



SAR Measurement Data

ALSAS-10U VER 2.3.2 APREL Laboratories

SAR Test Report-PCS 1900

Report Date : 17-Jul-2007
Measurement Date : 17-Jul-2007

Product Data

Device Name : Mobile Phone
Type : Std Form Cell Phone
Model : WIGO 800i
Frequency : 1900.00 MHz
Max. Transmit Pwr : 1 W
Drift Time : 0 min(s)
Length : 125.3 mm
Width : 49.1 mm
Depth : 21 mm
Antenna Type : Internal

Phantom Data

Type : SAM-Right
Size (mm) : 280 x 280 x 280
Location : Right

Tissue Data

Type : HEAD
Serial No. : 324-H
Frequency : 1900.00 MHz
Last Calib. Date : 17-Jul-2007
Temperature : 21.30 °C
Ambient Temp. : 23.80 °C
Humidity : 45.00 RH%
Epsilon : 40.72 F/m
Sigma : 1.452 S/m
Density : 1000.00 kg/cu. m

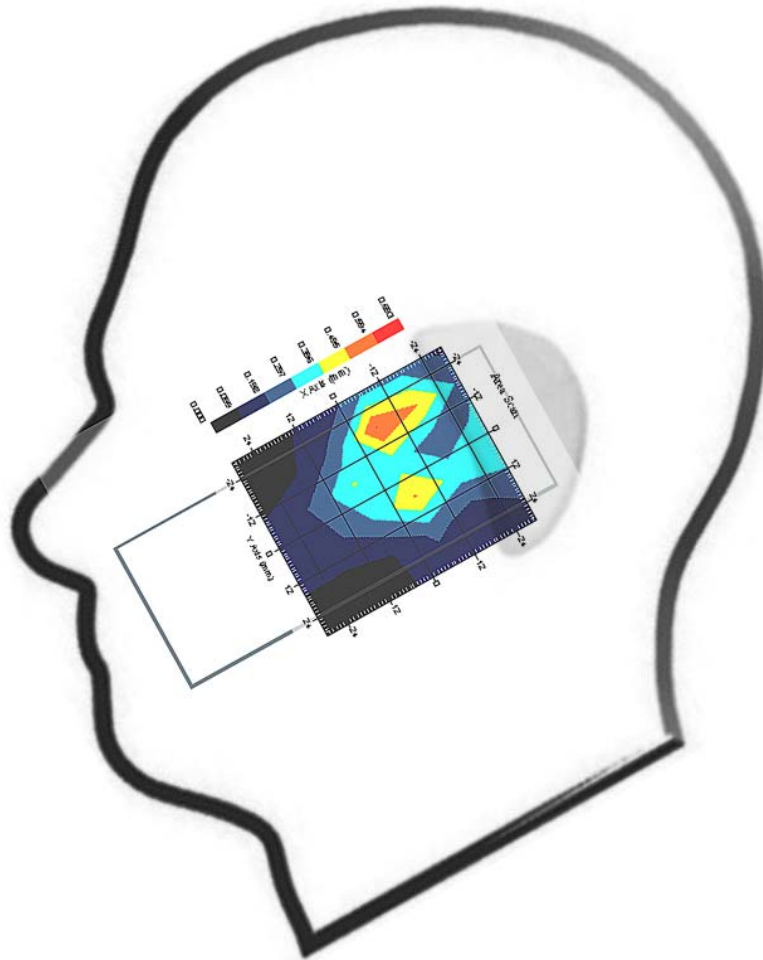
Probe Data

Name : Probe 261
Model : E020
Type : E-Field Triangle
Serial No. : 261
Last Calib. Date : 5-Apr-2007
Frequency : 1900.00 MHz
Duty Cycle Factor: 8
Conversion Factor: 5.1
Probe Sensitivity: 1.20 1.20 1.20 $\mu\text{V}/(\text{V}/\text{m})^2$
Compression Point: 95.00 mV
Offset : 1.56 mm

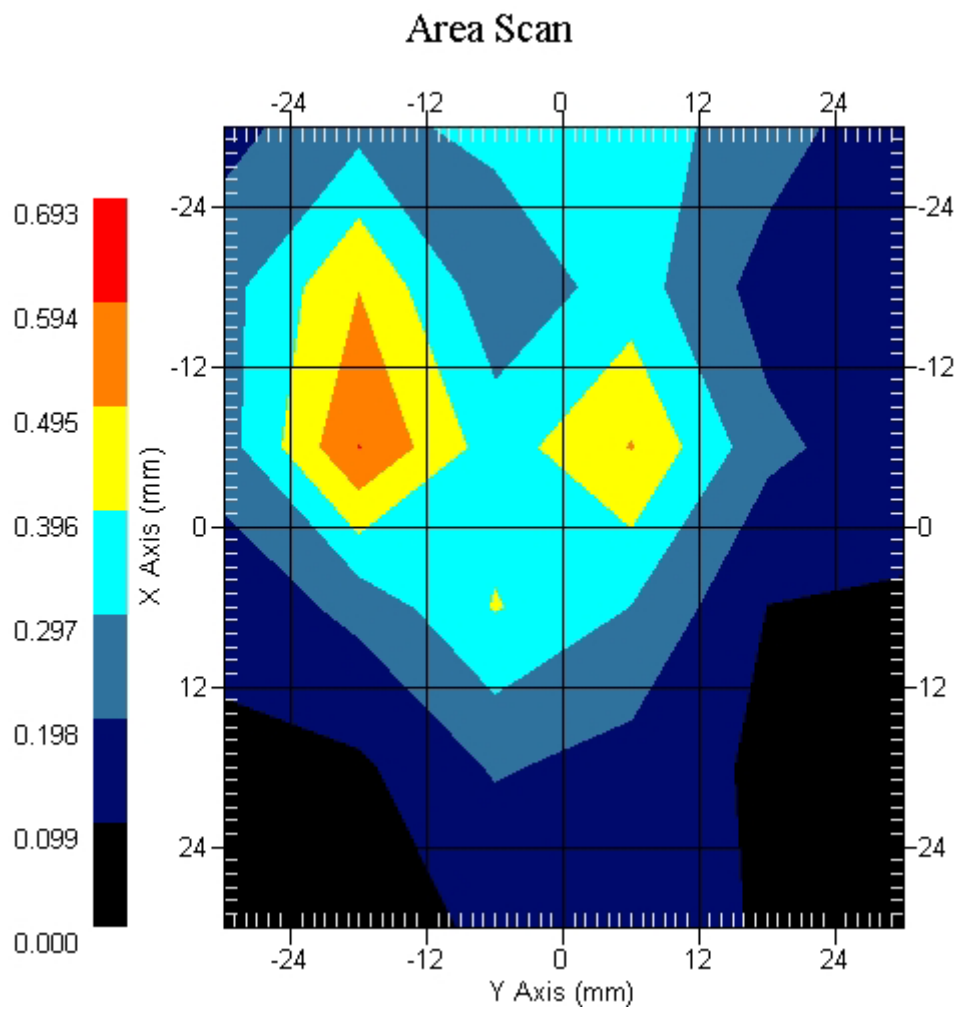
Measurement Data

Crest Factor : 8
 Tissue Temp. : 21.30 °C
 Ambient Temp. : 23.80 °C
 Area Scan : 6x6x1 : Measurement x=12mm, y=12mm, z=4mm
 Zoom Scan : 7x7x7 : Measurement x=5mm, y=5mm, z=5mm
 Power Drift-Start : 0.348 W/kg
 Power Drift-Finish: 0.359 W/kg
 Power Drift (%) : 3.154

DUT Position : Touch
 Channel : 512



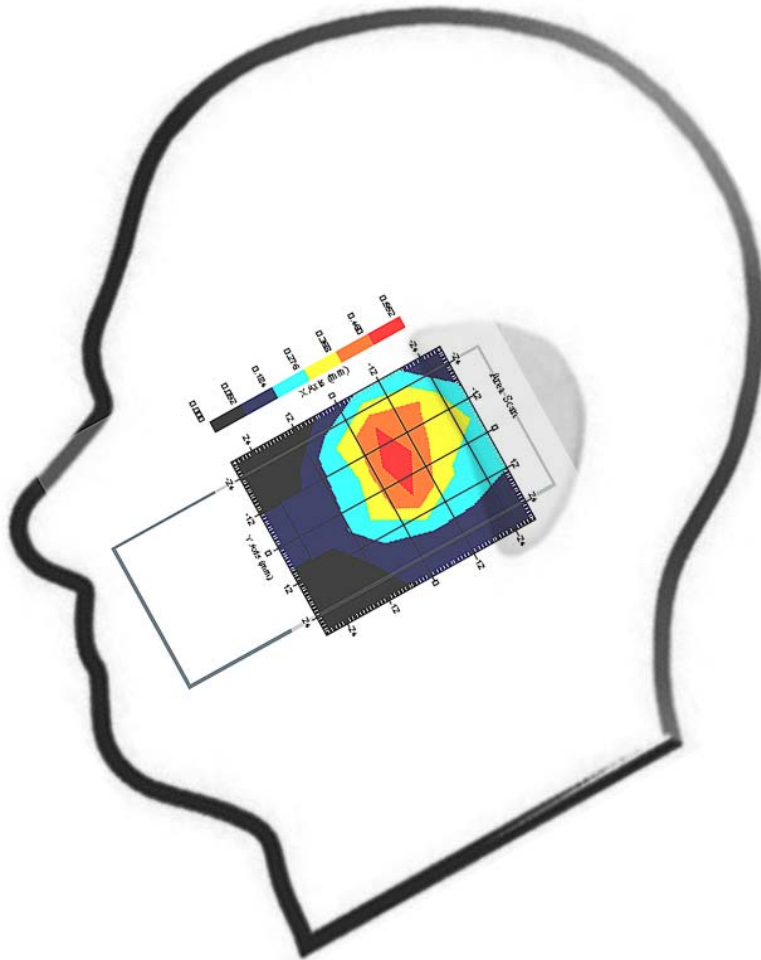
1 gram SAR value : 0.584 W/kg
 10 gram SAR value : 0.356 W/kg
 Area Scan Peak SAR : 0.595 W/kg
 Zoom Scan Peak SAR : 1.361 W/kg



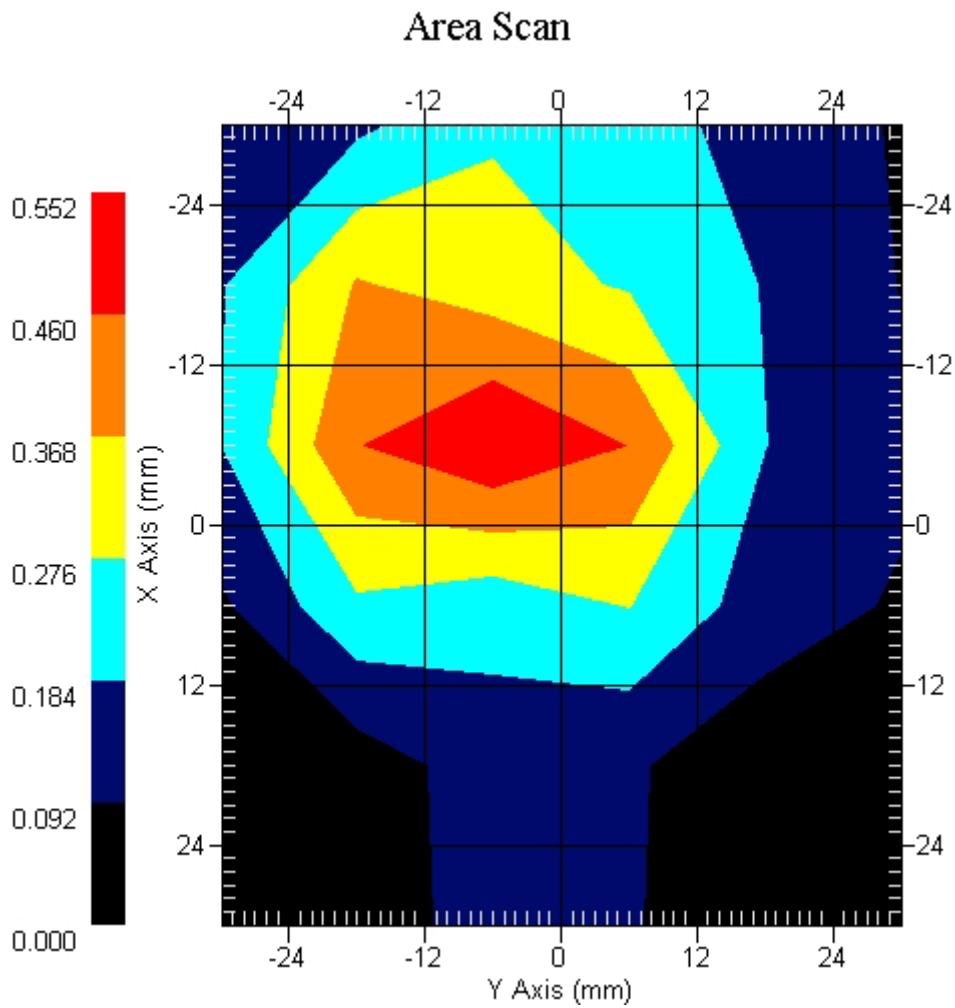
Measurement Data

Crest Factor : 8
Tissue Temp. : 21.30 °C
Ambient Temp. : 23.80 °C
Area Scan : 6x6x1 : Measurement x=12mm, y=12mm, z=4mm
Zoom Scan : 7x7x7 : Measurement x=5mm, y=5mm, z=5mm
Power Drift-Start : 0.287 W/kg
Power Drift-Finish: 0.276 W/kg
Power Drift (%) : -3.826

DUT Position : Touch
Channel : 661



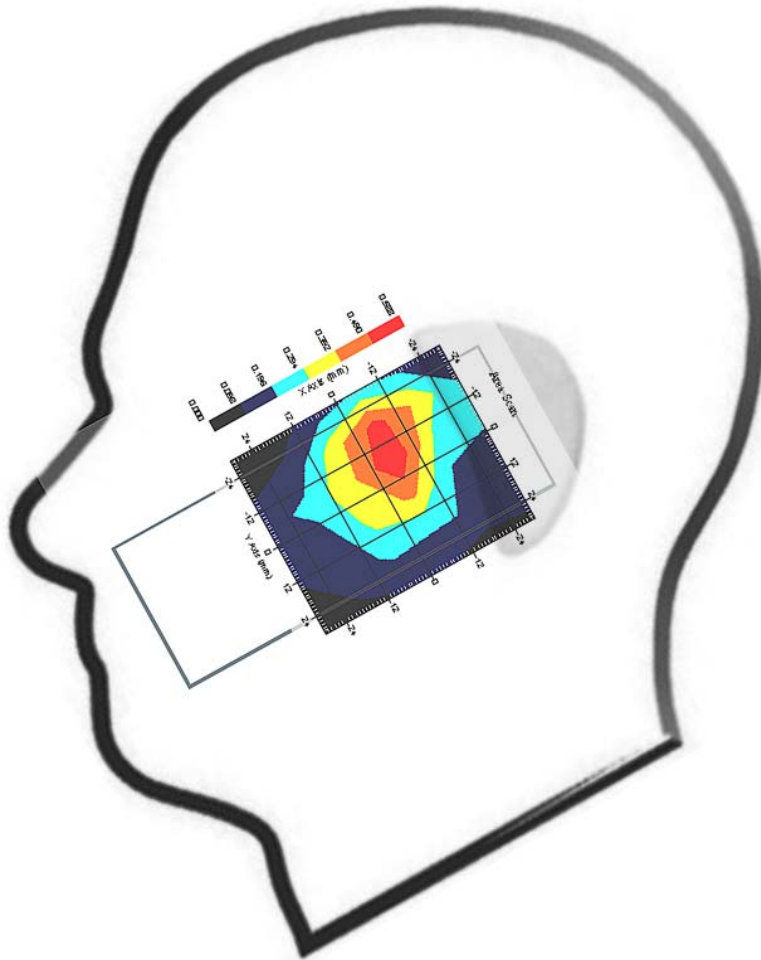
1 gram SAR value : 0.400 W/kg
10 gram SAR value : 0.229 W/kg
Area Scan Peak SAR : 0.549 W/kg
Zoom Scan Peak SAR : 0.790 W/kg



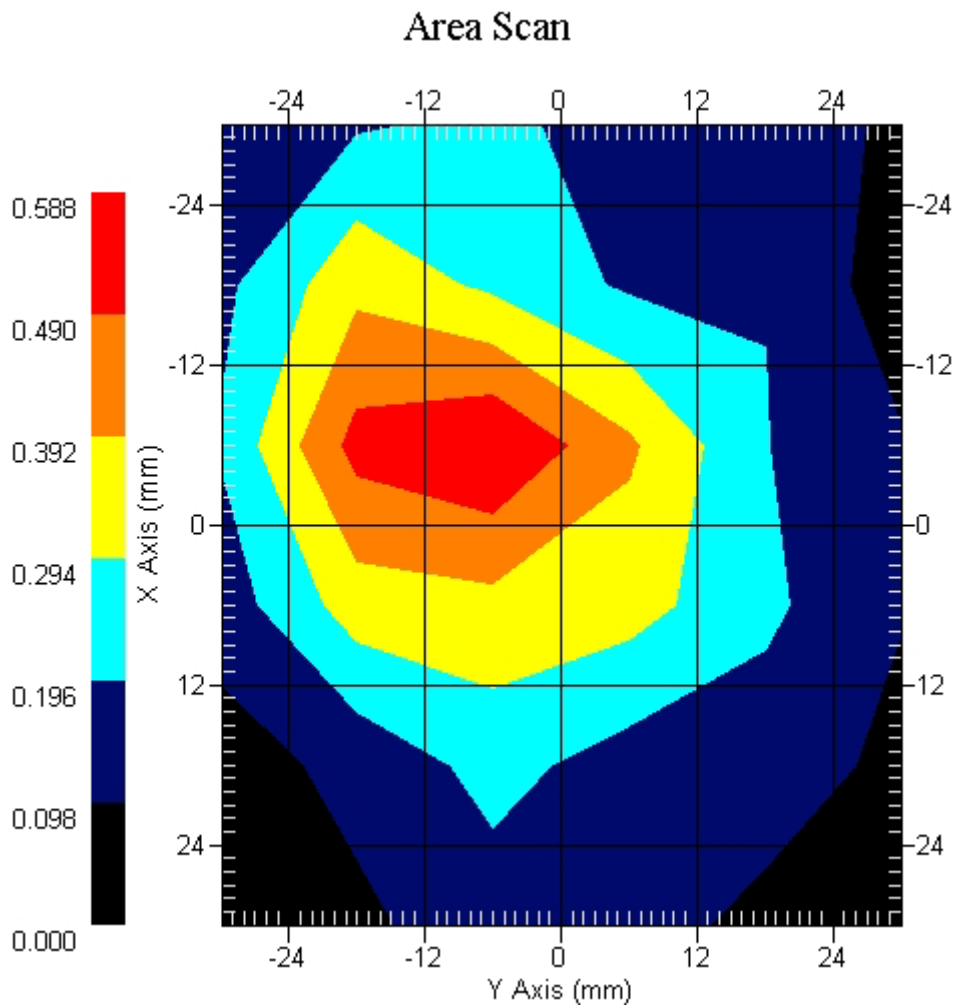
Measurement Data

Crest Factor : 8
Tissue Temp. : 21.30 °C
Ambient Temp. : 23.80 °C
Area Scan : 6x6x1 : Measurement x=12mm, y=12mm, z=4mm
Zoom Scan : 7x7x7 : Measurement x=5mm, y=5mm, z=5mm
Power Drift-Start : 0.308 W/kg
Power Drift-Finish: 0.319 W/kg
Power Drift (%) : 3.535

DUT Position : Touch
Channel : 810



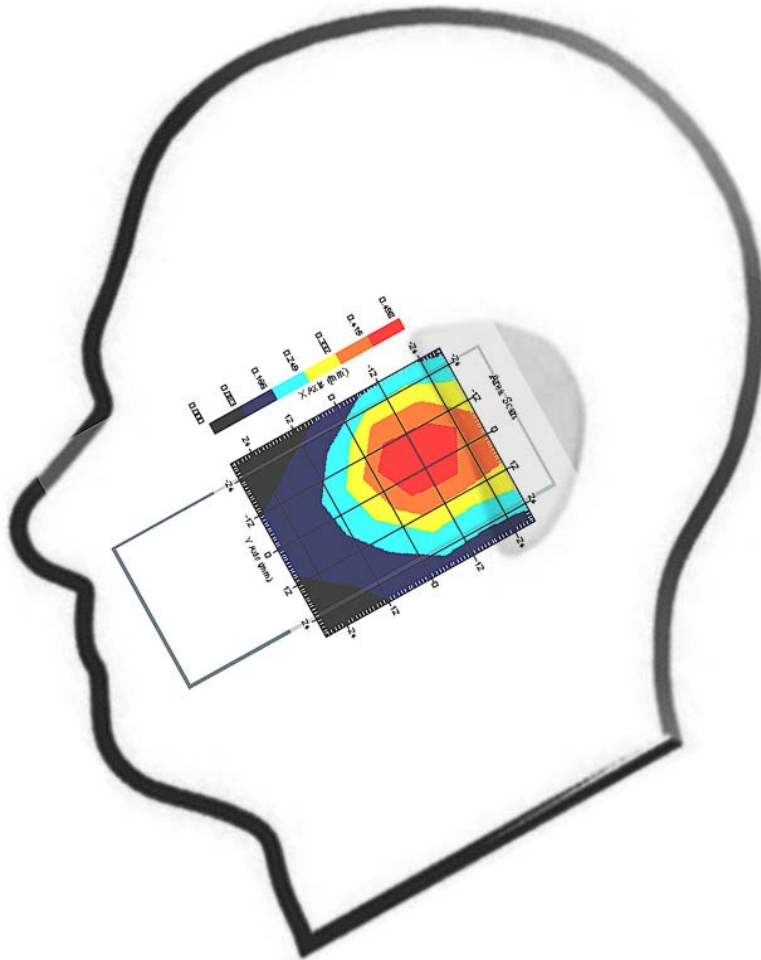
1 gram SAR value : 0.549 W/kg
10 gram SAR value : 0.262 W/kg
Area Scan Peak SAR : 0.587 W/kg
Zoom Scan Peak SAR : 1.070 W/kg



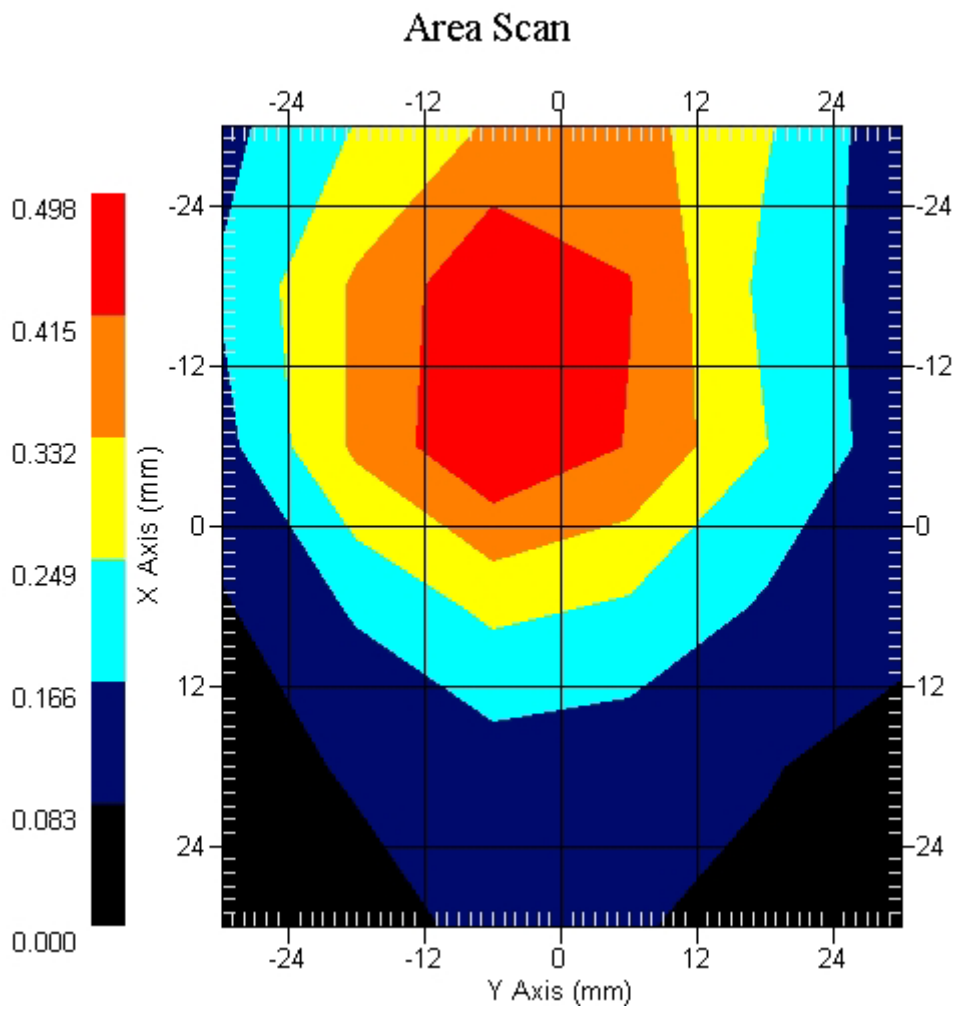
Measurement Data

Crest Factor : 8
Tissue Temp. : 21.30 °C
Ambient Temp. : 23.80 °C
Area Scan : 6x6x1 : Measurement x=12mm, y=12mm, z=4mm
Zoom Scan : 7x7x7 : Measurement x=5mm, y=5mm, z=5mm
Power Drift-Start : 0.451 W/kg
Power Drift-Finish: 0.435 W/kg
Power Drift (%) : -3.402

DUT Position : 15° Tilt
Channel : 512



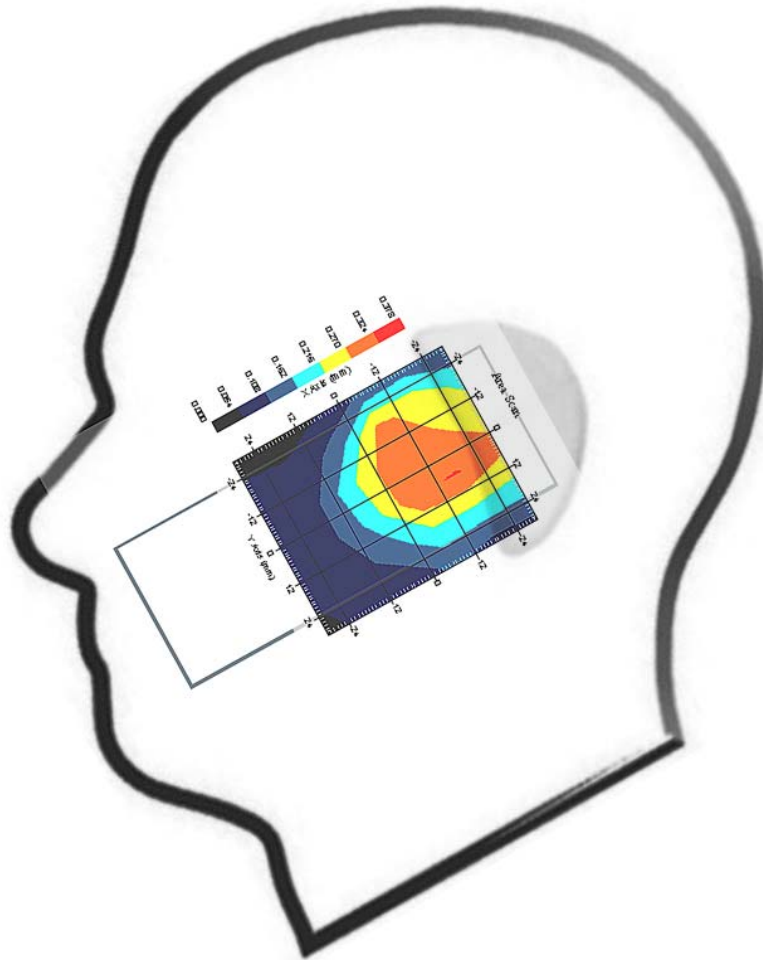
1 gram SAR value : 0.469 W/kg
10 gram SAR value : 0.265 W/kg
Area Scan Peak SAR : 0.498 W/kg
Zoom Scan Peak SAR : 0.790 W/kg



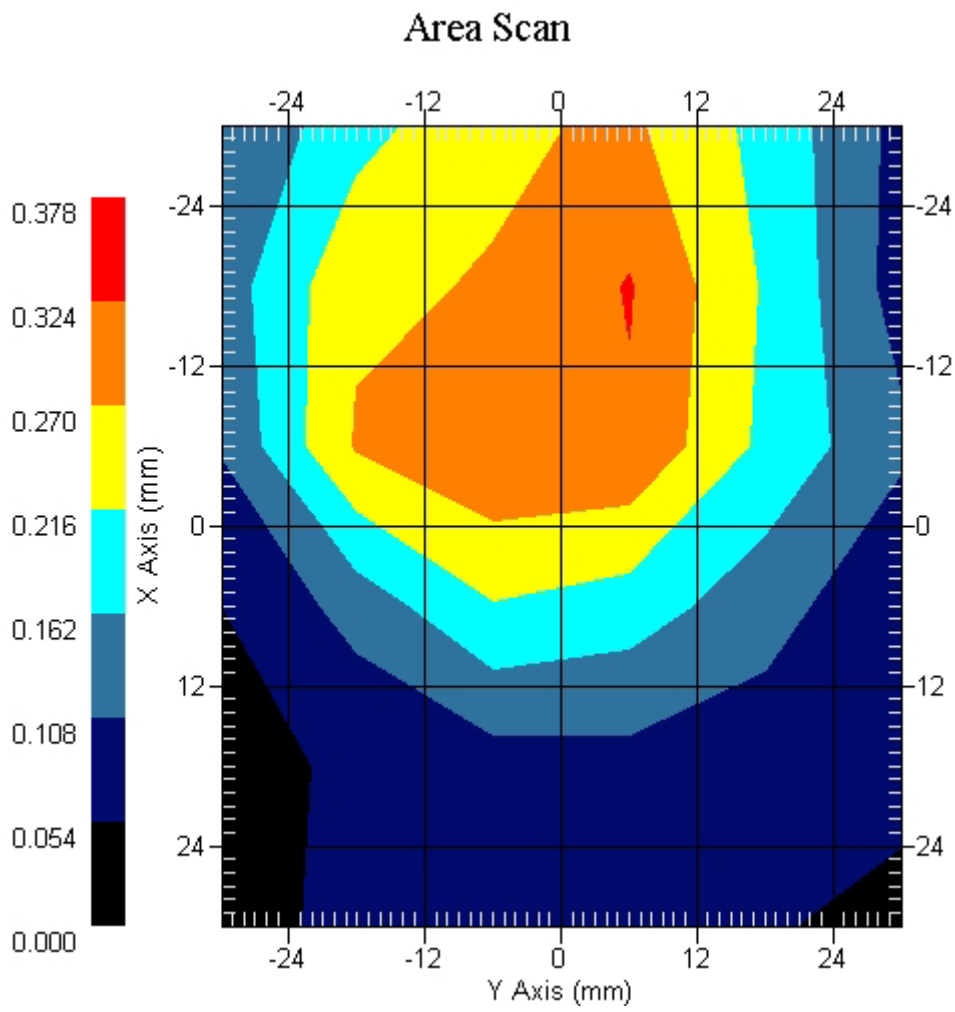
Measurement Data

Crest Factor : 8
Tissue Temp. : 21.30 °C
Ambient Temp. : 23.80 °C
Area Scan : 6x6x1 : Measurement x=12mm, y=12mm, z=4mm
Zoom Scan : 7x7x7 : Measurement x=5mm, y=5mm, z=5mm
Power Drift-Start : 0.341 W/kg
Power Drift-Finish: 0.345 W/kg
Power Drift (%) : 1.257

DUT Position : 15° Tilt
Channel : 661



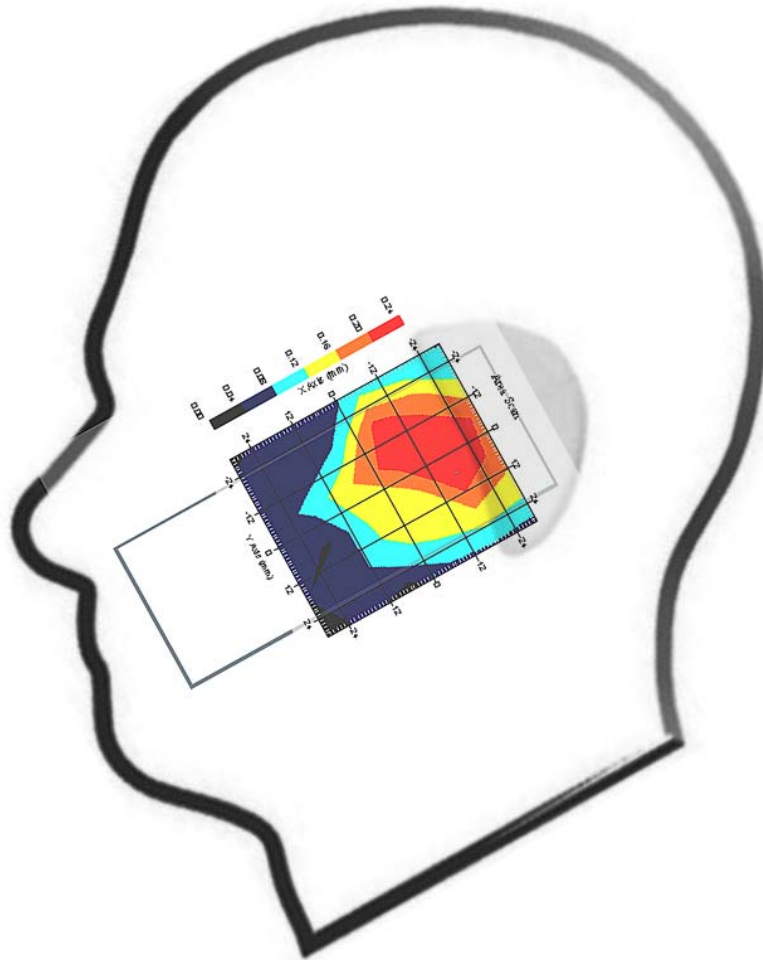
1 gram SAR value : 0.368 W/kg
10 gram SAR value : 0.215 W/kg
Area Scan Peak SAR : 0.327 W/kg
Zoom Scan Peak SAR : 0.580 W/kg



Measurement Data

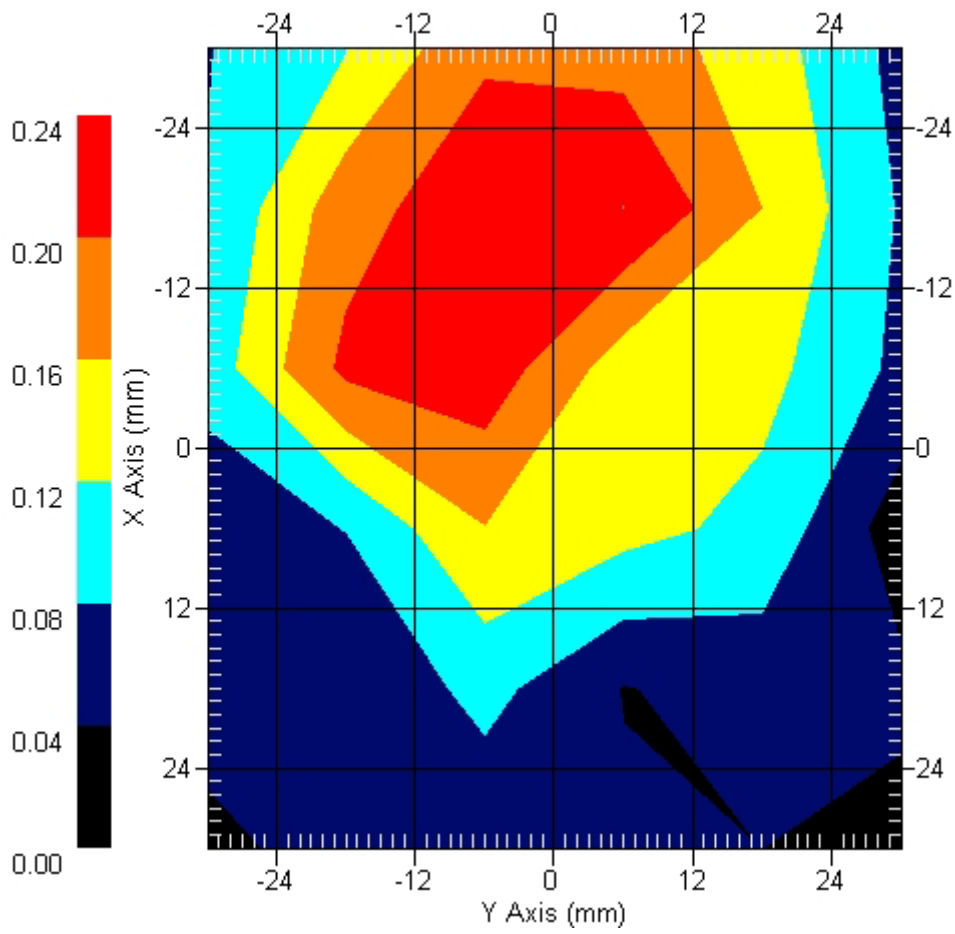
Crest Factor : 8
Tissue Temp. : 21.30 °C
Ambient Temp. : 23.80 °C
Area Scan : 6x6x1 : Measurement x=12mm, y=12mm, z=4mm
Zoom Scan : 7x7x7 : Measurement x=5mm, y=5mm, z=5mm
Power Drift-Start : 0.234 W/kg
Power Drift-Finish: 0.243 W/kg
Power Drift (%) : 3.827

DUT Position : 15° Tilt
Channel : 810



1 gram SAR value : 0.267 W/kg
10 gram SAR value : 0.166 W/kg
Area Scan Peak SAR : 0.240 W/kg
Zoom Scan Peak SAR : 0.380 W/kg

Area Scan



ALSAS-10U VER 2.3.2 APREL Laboratories

SAR Test Report-PCS 1900

Report Date : 17-Jul-2007
Measurement Date : 17-Jul-2007

Product Data

Device Name : Mobile Phone
Type : Std Form Cell Phone
Model : WIGO 800i
Frequency : 1900.00 MHz
Max. Transmit Pwr : 1 W
Drift Time : 0 min(s)
Length : 125.3 mm
Width : 49.1 mm
Depth : 21 mm
Antenna Type : Internal

Phantom Data

Type : SAM-Left
Size (mm) : 280 x 280 x 280
Location : Left

Tissue Data

Type : HEAD
Serial No. : 324-H
Frequency : 1900.00 MHz
Last Calib. Date : 17-Jul-2007
Temperature : 21.30 °C
Ambient Temp. : 23.80 °C
Humidity : 45.00 RH%
Epsilon : 40.72 F/m
Sigma : 1.452 S/m
Density : 1000.00 kg/cu. m

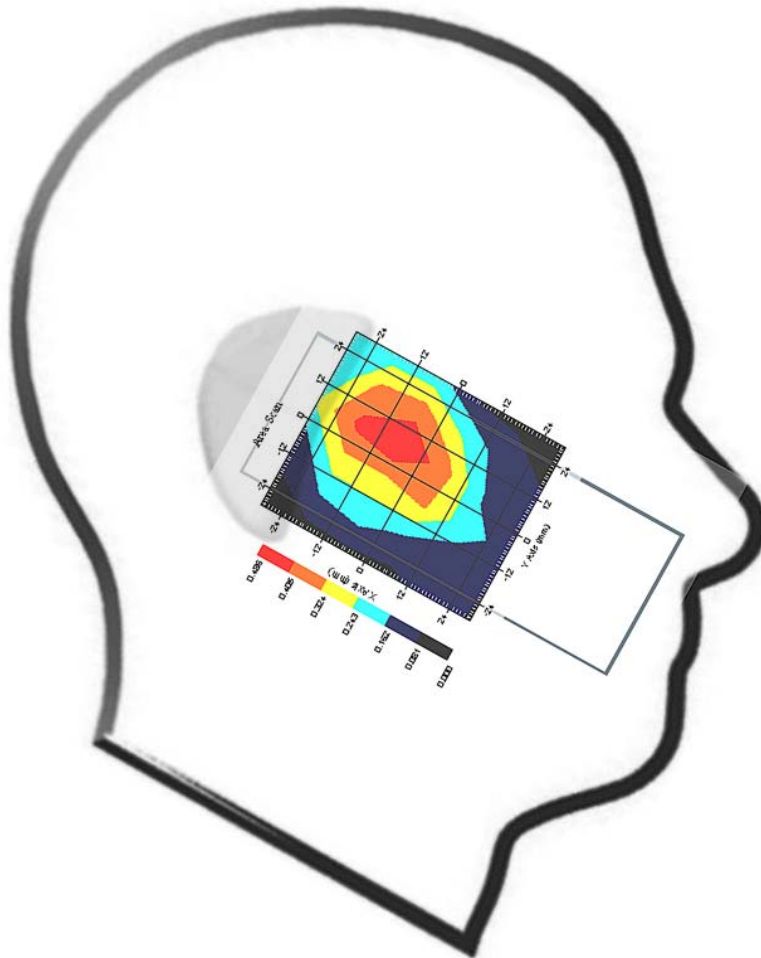
Probe Data

Name : Probe 261
Model : E020
Type : E-Field Triangle
Serial No. : 261
Last Calib. Date : 5-Apr-2007
Frequency : 1900.00 MHz
Duty Cycle Factor: 8
Conversion Factor: 5.1
Probe Sensitivity: 1.20 1.20 1.20 $\mu\text{V}/(\text{V}/\text{m})^2$
Compression Point: 95.00 mV
Offset : 1.56 mm

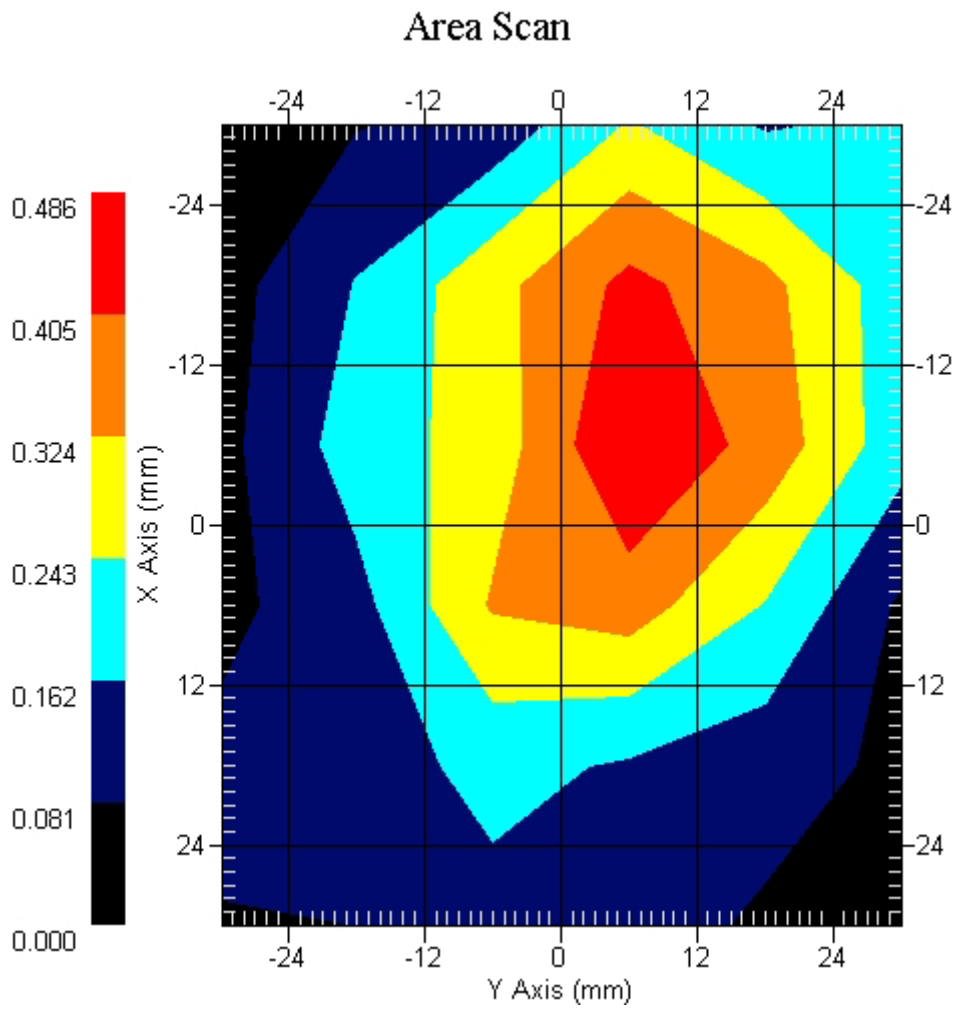
Measurement Data

Crest Factor : 8
Tissue Temp. : 21.30 °C
Ambient Temp. : 23.80 °C
Area Scan : 6x6x1 : Measurement x=12mm, y=12mm, z=4mm
Zoom Scan : 7x7x7 : Measurement x=5mm, y=5mm, z=5mm
Power Drift-Start : 0.262 W/kg
Power Drift-Finish: 0.251 W/kg
Power Drift (%) : -4.113

DUT Position : Touch
Channel : 512



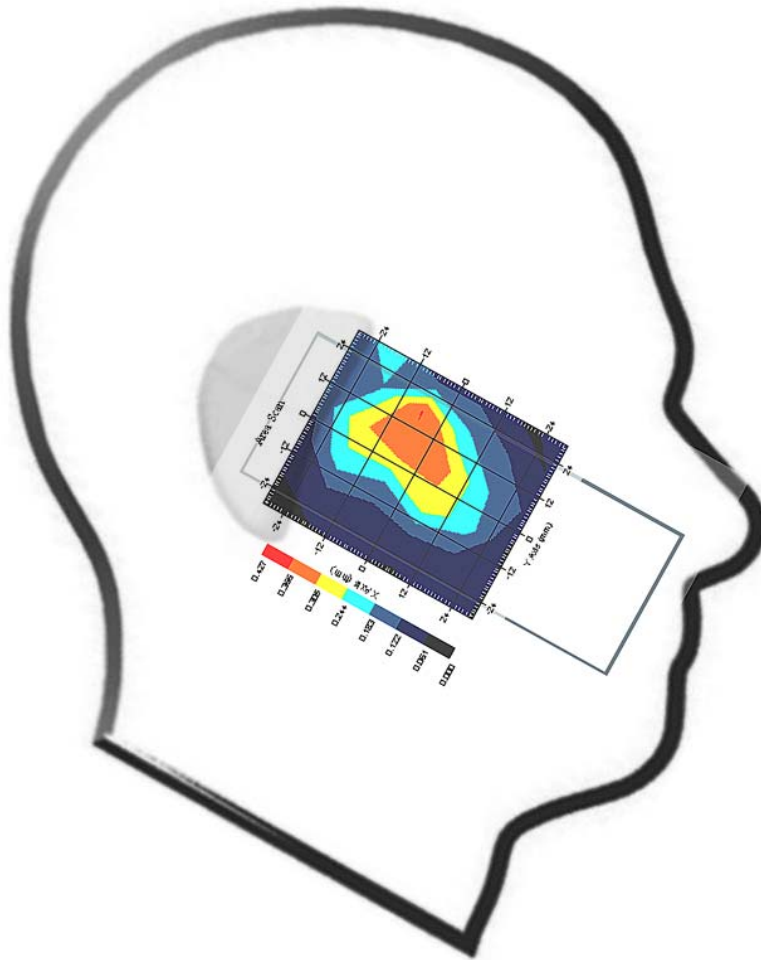
1 gram SAR value : 0.371 W/kg
10 gram SAR value : 0.195 W/kg
Area Scan Peak SAR : 0.486 W/kg
Zoom Scan Peak SAR : 1.010 W/kg



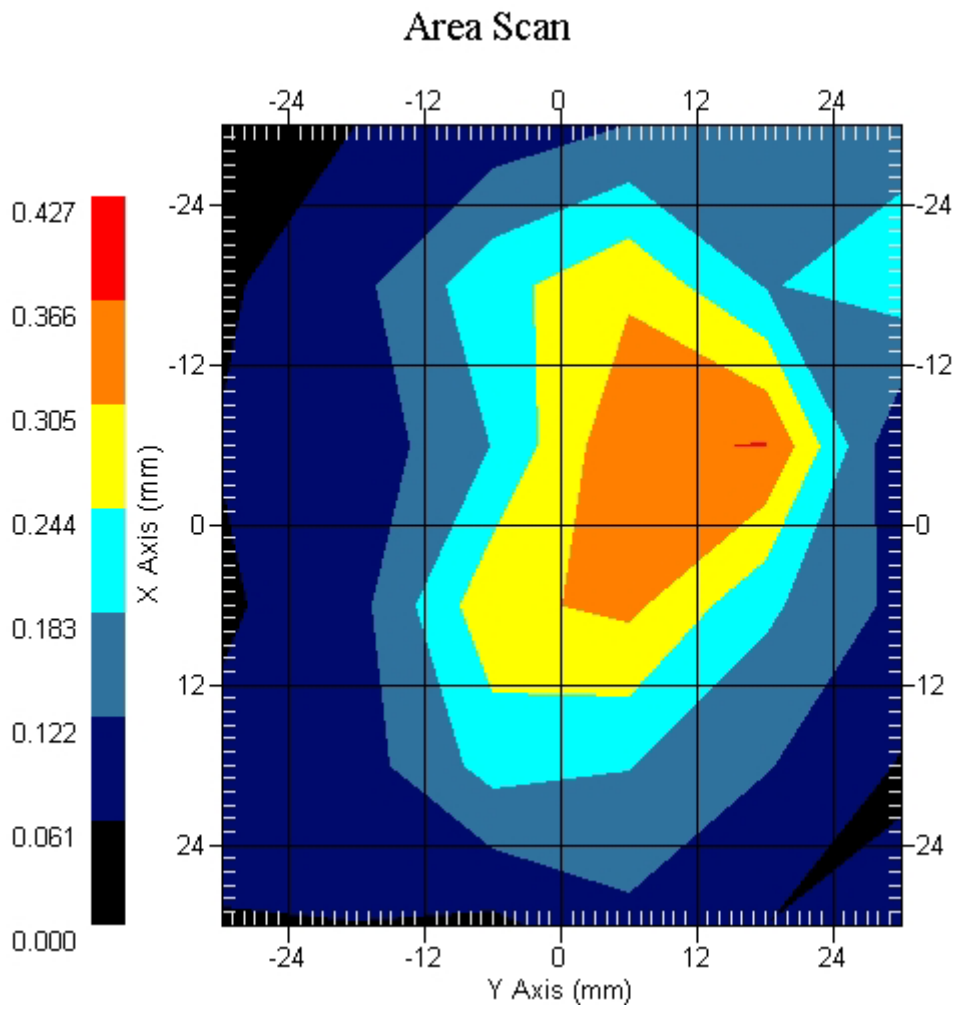
Measurement Data

Crest Factor : 8
Tissue Temp. : 21.30 °C
Ambient Temp. : 23.80 °C
Area Scan : 6x6x1 : Measurement x=12mm, y=12mm, z=4mm
Zoom Scan : 7x7x7 : Measurement x=5mm, y=5mm, z=5mm
Power Drift-Start : 0.231 W/kg
Power Drift-Finish: 0.240 W/kg
Power Drift (%) : 3.836

DUT Position : Touch
Channel : 661



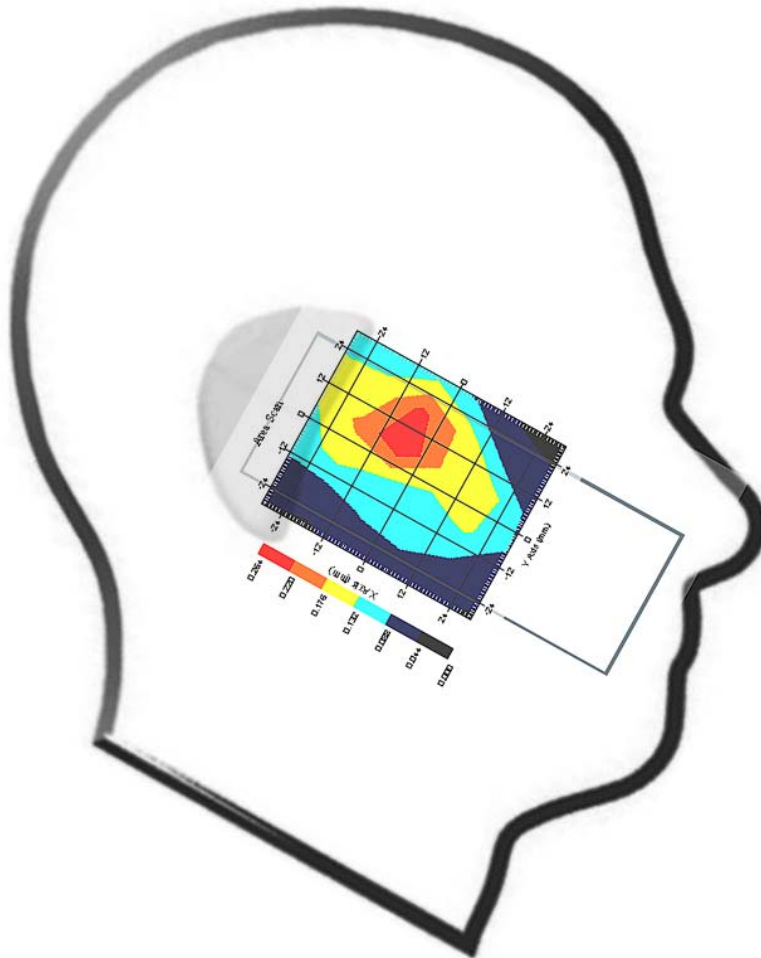
1 gram SAR value : 0.257 W/kg
10 gram SAR value : 0.152 W/kg
Area Scan Peak SAR : 0.368 W/kg
Zoom Scan Peak SAR : 0.620 W/kg



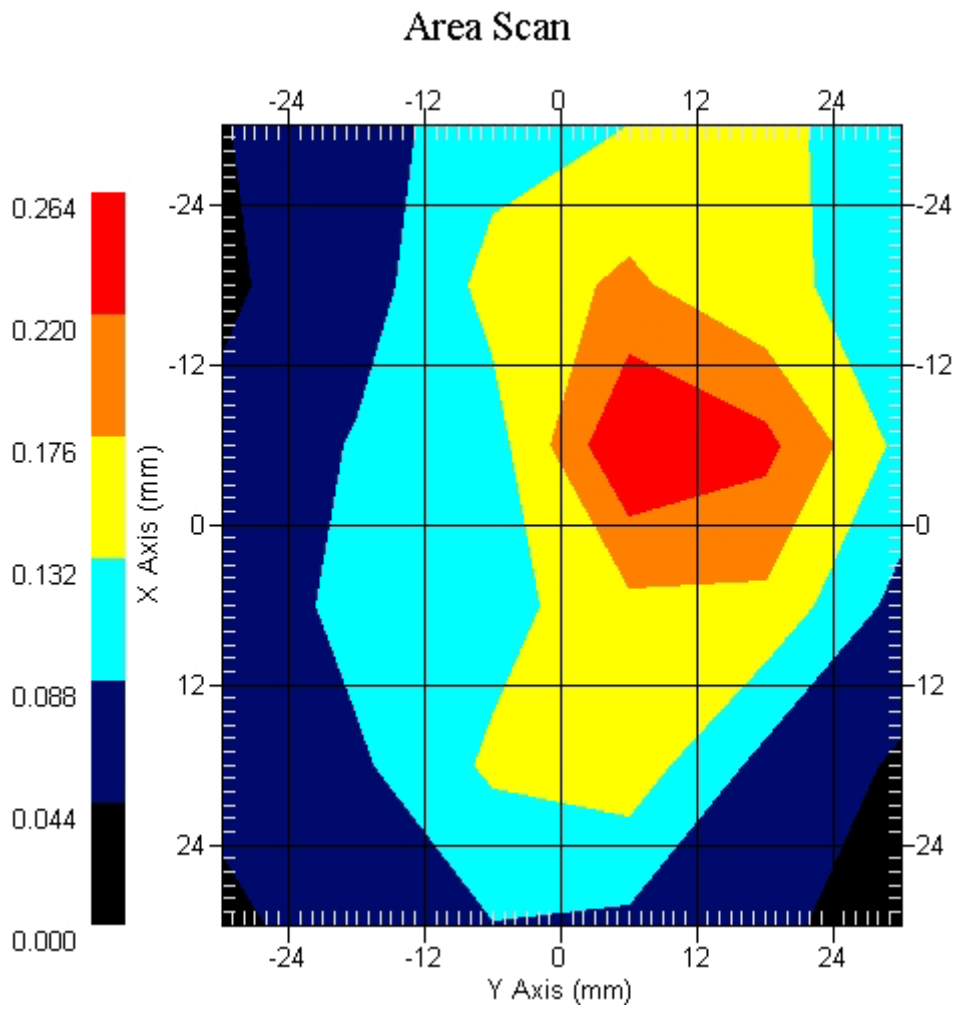
Measurement Data

Crest Factor : 8
Tissue Temp. : 21.30 °C
Ambient Temp. : 23.80 °C
Area Scan : 6x6x1 : Measurement x=12mm, y=12mm, z=4mm
Zoom Scan : 7x7x7 : Measurement x=5mm, y=5mm, z=5mm
Power Drift-Start : 0.173 W/kg
Power Drift-Finish: 0.167 W/kg
Power Drift (%) : -3.499

DUT Position : Touch
Channel : 810



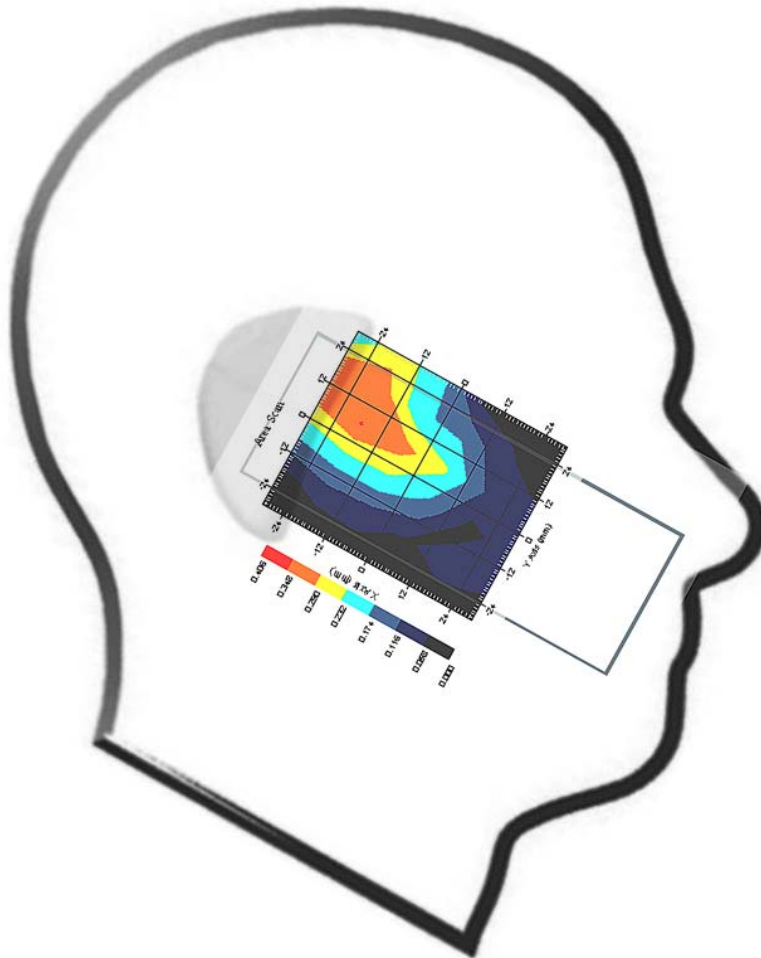
1 gram SAR value : 0.225 W/kg
10 gram SAR value : 0.122 W/kg
Area Scan Peak SAR : 0.263 W/kg
Zoom Scan Peak SAR : 0.420 W/kg



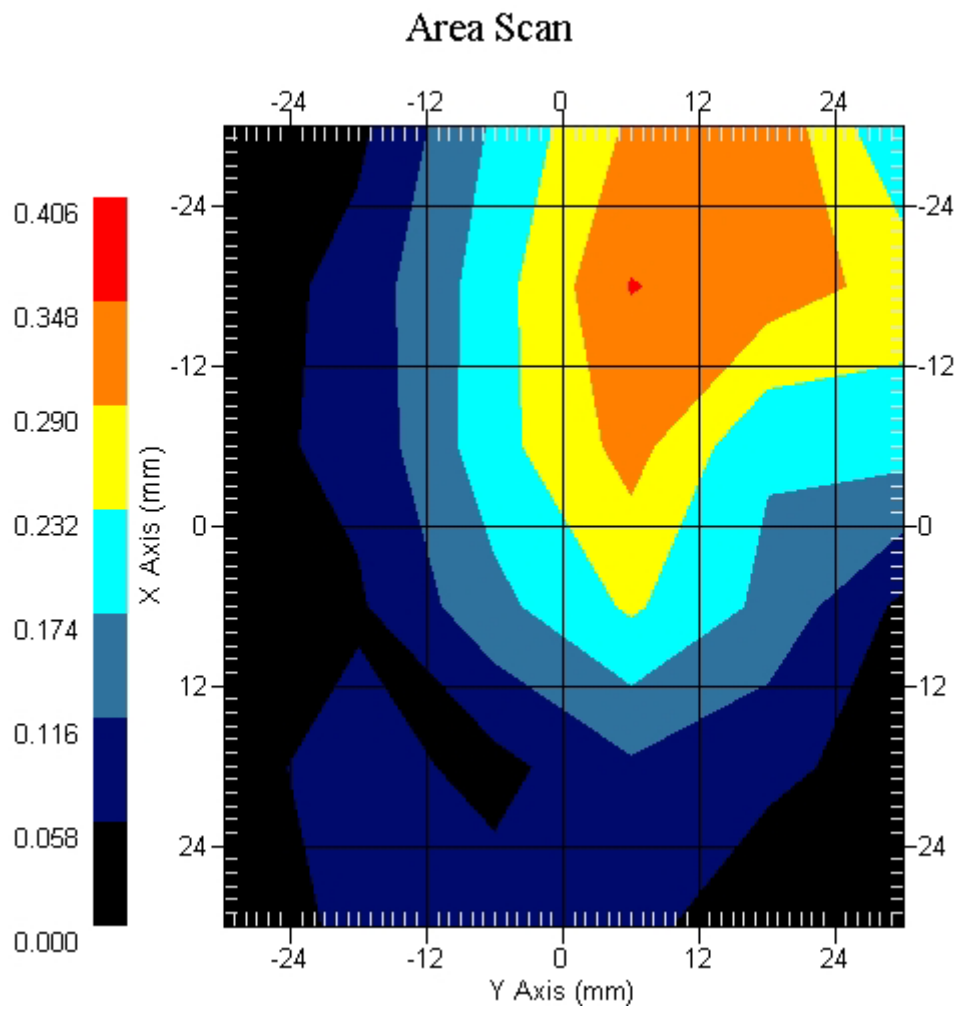
Measurement Data

Crest Factor : 8
Tissue Temp. : 21.30 °C
Ambient Temp. : 23.80 °C
Area Scan : 6x6x1 : Measurement x=12mm, y=12mm, z=4mm
Zoom Scan : 7x7x7 : Measurement x=5mm, y=5mm, z=5mm
Power Drift-Start : 0.265 W/kg
Power Drift-Finish: 0.271 W/kg
Power Drift (%) : 2.280

DUT Position : 15° Tilt
Channel : 512



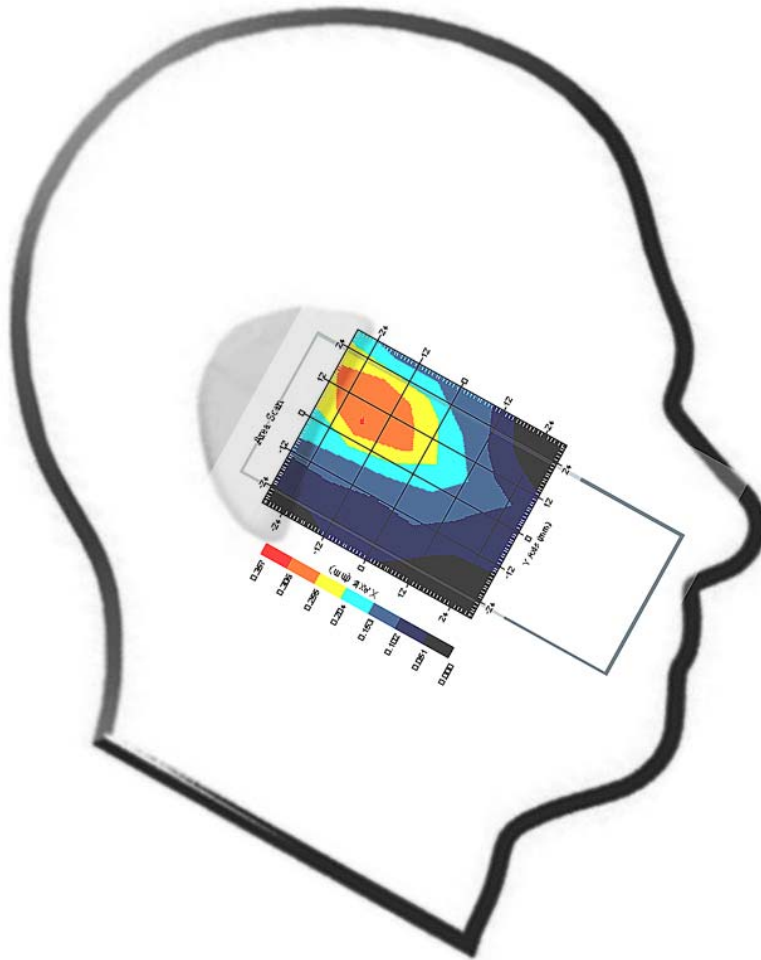
1 gram SAR value : 0.323 W/kg
10 gram SAR value : 0.179 W/kg
Area Scan Peak SAR : 0.350 W/kg
Zoom Scan Peak SAR : 0.860 W/kg



Measurement Data

Crest Factor : 8
Tissue Temp. : 21.30 °C
Ambient Temp. : 23.80 °C
Area Scan : 6x6x1 : Measurement x=12mm, y=12mm, z=4mm
Zoom Scan : 7x7x7 : Measurement x=5mm, y=5mm, z=5mm
Power Drift-Start : 0.252 W/kg
Power Drift-Finish: 0.261 W/kg
Power Drift (%) : 3.707

DUT Position : 15° Tilt
Channel : 661



1 gram SAR value : 0.260 W/kg
10 gram SAR value : 0.142 W/kg
Area Scan Peak SAR : 0.308 W/kg
Zoom Scan Peak SAR : 0.510 W/kg

Area Scan

