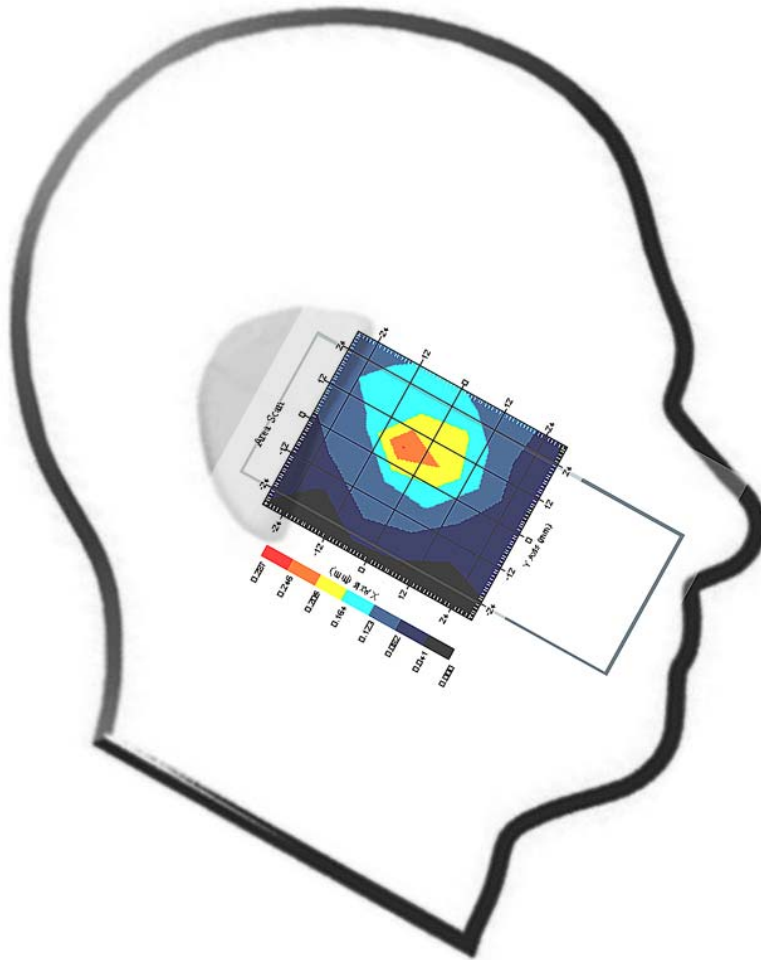


Measurement Data

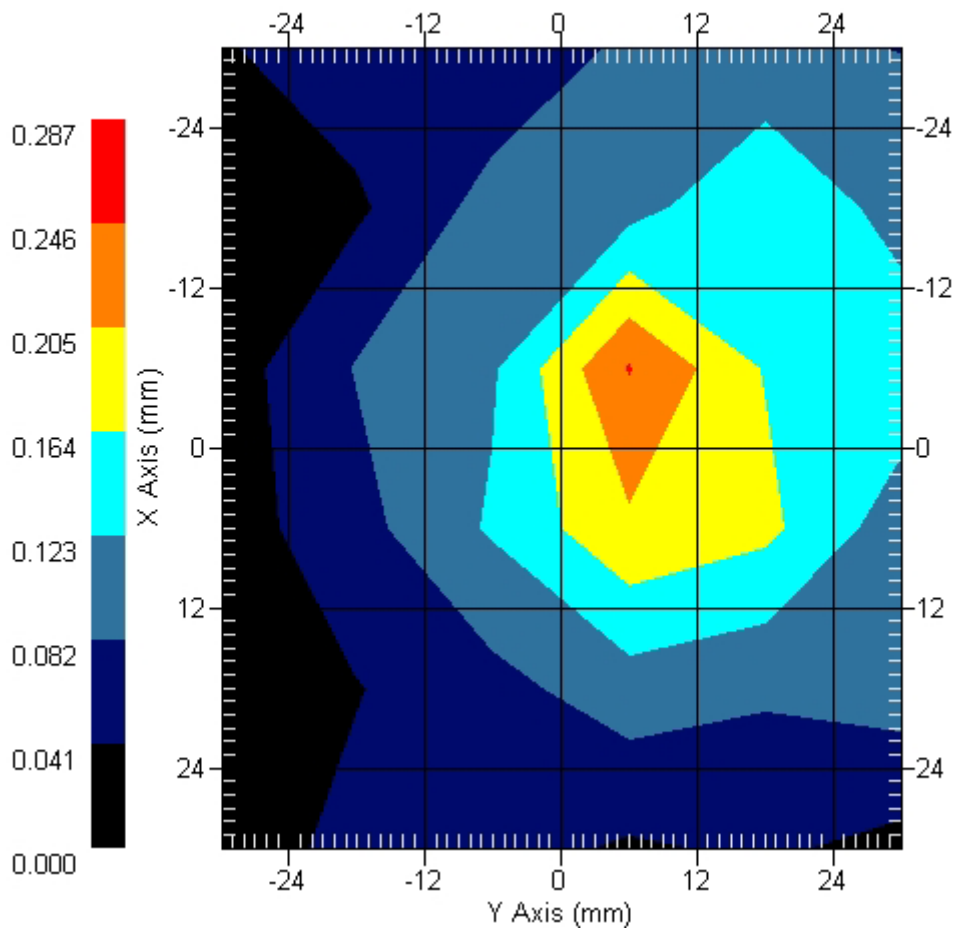
Crest Factor : 8
Tissue Temp. : 21.30 °C
Ambient Temp. : 23.80 °C
Area Scan : 6x6x1 : Measurement x=12mm, y=12mm, z=4mm
Zoom Scan : 7x7x7 : Measurement x=5mm, y=5mm, z=5mm
Power Drift-Start : 0.204 W/kg
Power Drift-Finish: 0.196 W/kg
Power Drift (%) : -3.928

DUT Position : 15° Tilt
Channel : 810



1 gram SAR value : 0.199 W/kg
10 gram SAR value : 0.137 W/kg
Area Scan Peak SAR : 0.248 W/kg
Zoom Scan Peak SAR : 0.370 W/kg

Area Scan



ALSAS-10U VER 2.3.2 APREL Laboratories
SAR Test Report-PCS 1900

Report Date : 17-Jul-2007
Measurement Date : 17-Jul-2007

Product Data

Device Name : Mobile Phone
Type : Std Form Cell Phone
Model : WIGO 800i
Frequency : 1900.00 MHz
Max. Transmit Pwr : 1 W
Drift Time : 0 min(s)
Length : 125.3 mm
Width : 49.1 mm
Depth : 21 mm
Antenna Type : Internal

Phantom Data

Type : Uni-Phantom
Size (mm) : 280 x 280 x 200
Location : Center

Tissue Data

Type : BODY
Serial No. : 324-B
Frequency : 1900.00 MHz
Last Calib. Date : 17-Jul-2007
Temperature : 21.30 °C
Ambient Temp. : 23.80 °C
Humidity : 45.00 RH%
Epsilon : 52.34 F/m
Sigma : 1.487 S/m
Density : 1000.00 kg/cu. m

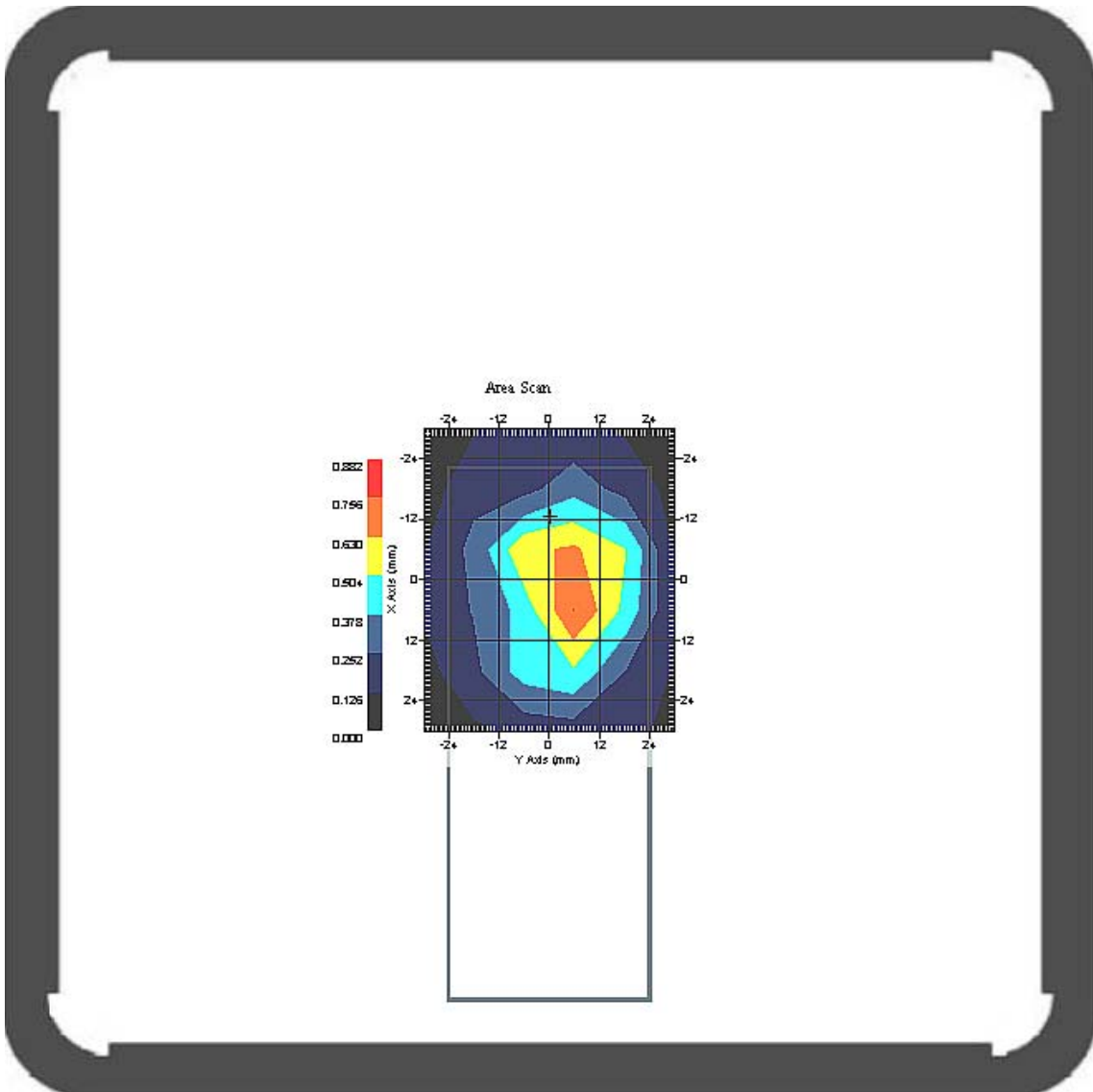
Probe Data

Name : Probe 261
Model : E020
Type : E-Field Triangle
Serial No. : 261
Last Calib. Date : 5-Apr-2007
Frequency : 1900.00 MHz
Duty Cycle Factor: 8
Conversion Factor: 4.7
Probe Sensitivity: 1.20 1.20 1.20 $\mu\text{V}/(\text{V}/\text{m})^2$
Compression Point: 95.00 mV
Offset : 1.56 mm

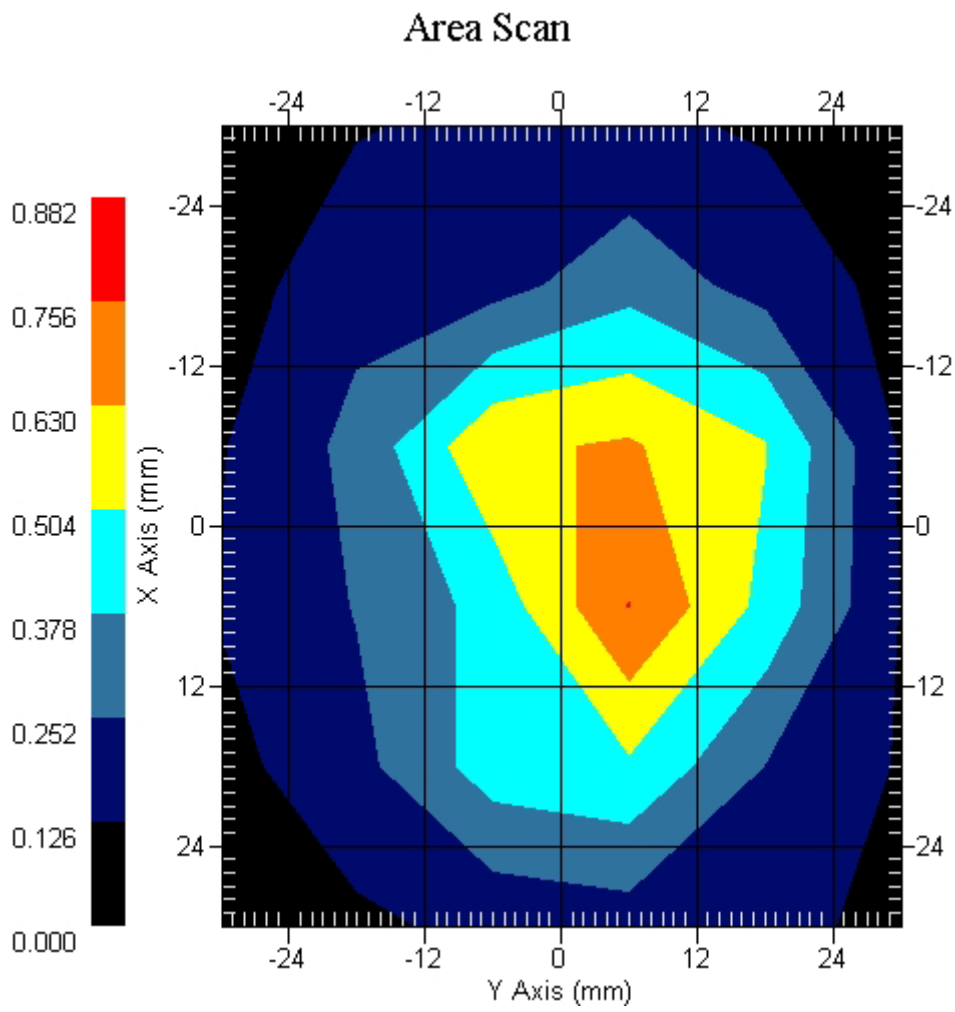
Measurement Data

Crest Factor : 1
 Tissue Temp. : 21.30 °C
 Ambient Temp. : 23.80 °C
 Area Scan : 6x6x1 : Measurement x=12mm, y=12mm, z=4mm
 Zoom Scan : 7x7x7 : Measurement x=5mm, y=5mm, z=5mm
 Power Drift-Start : 0.343 W/kg
 Power Drift-Finish: 0.336 W/kg
 Power Drift (%) : -2.047

DUT Position : Touch
 Channel : 512



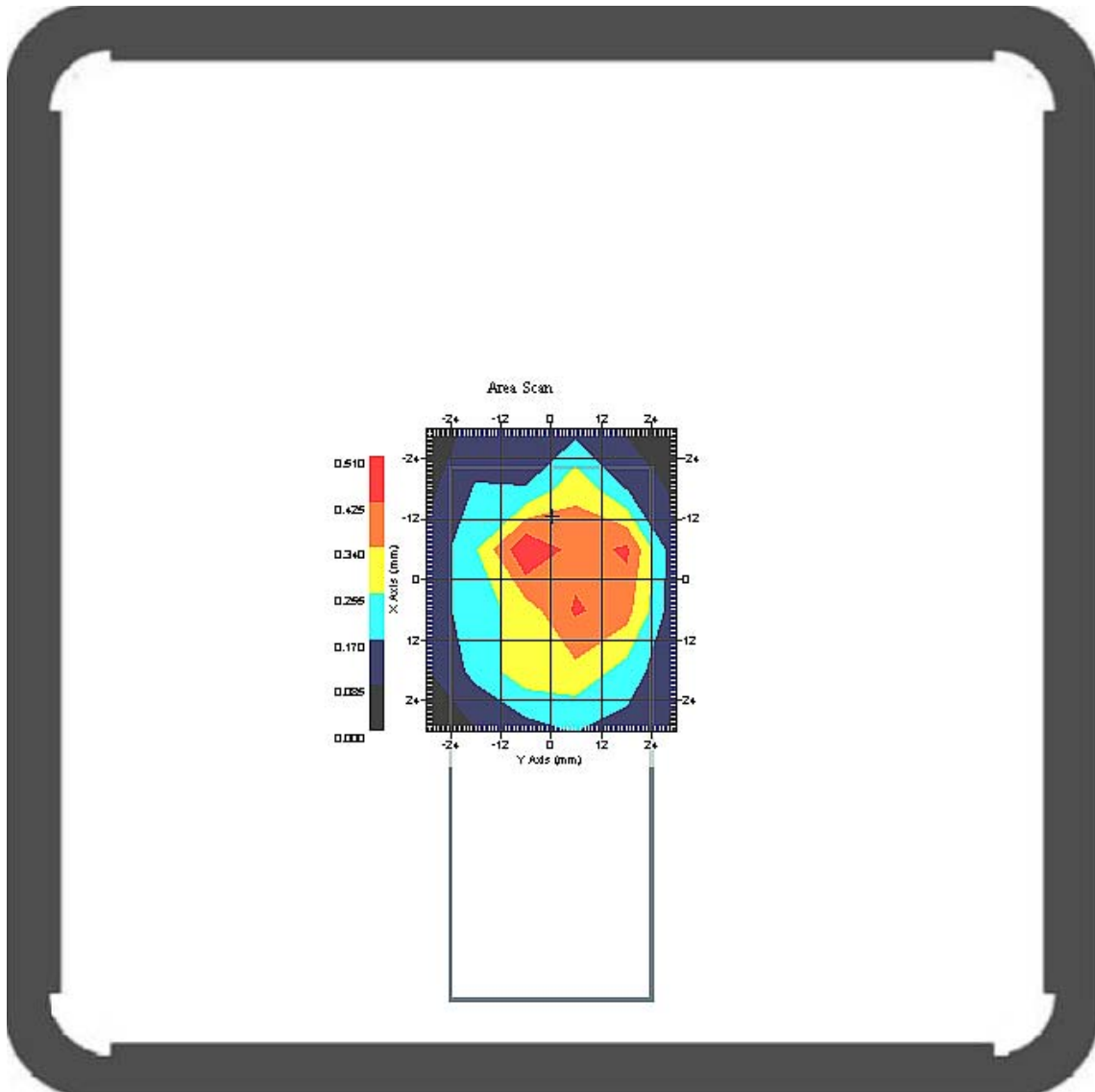
1 gram SAR value : 0.632 W/kg
 10 gram SAR value : 0.366 W/kg
 Area Scan Peak SAR : 0.758 W/kg
 Zoom Scan Peak SAR : 1.110 W/kg



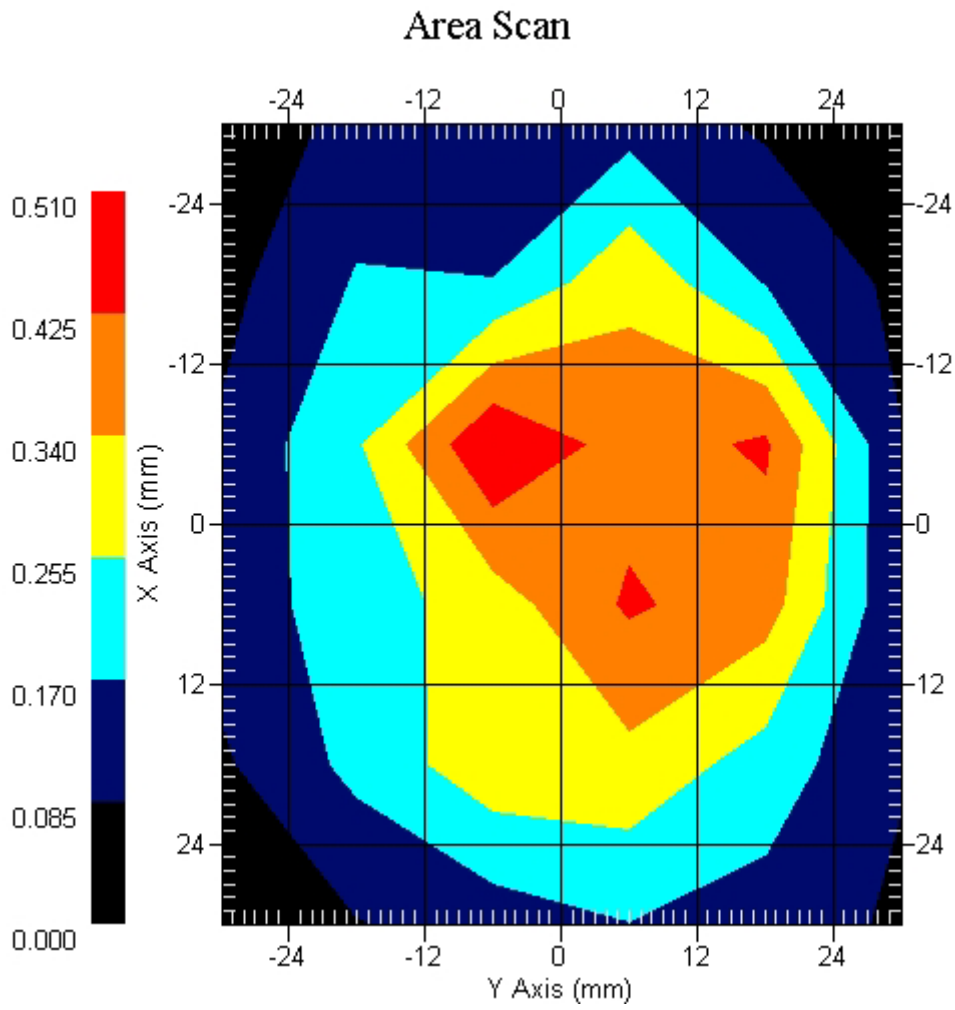
Measurement Data

Crest Factor : 1
 Tissue Temp. : 21.30 °C
 Ambient Temp. : 23.80 °C
 Area Scan : 6x6x1 : Measurement x=12mm, y=12mm, z=4mm
 Zoom Scan : 7x7x7 : Measurement x=5mm, y=5mm, z=5mm
 Power Drift-Start : 0.271 W/kg
 Power Drift-Finish: 0.279 W/kg
 Power Drift (%) : 2.966

DUT Position : Touch
 Channel : 661



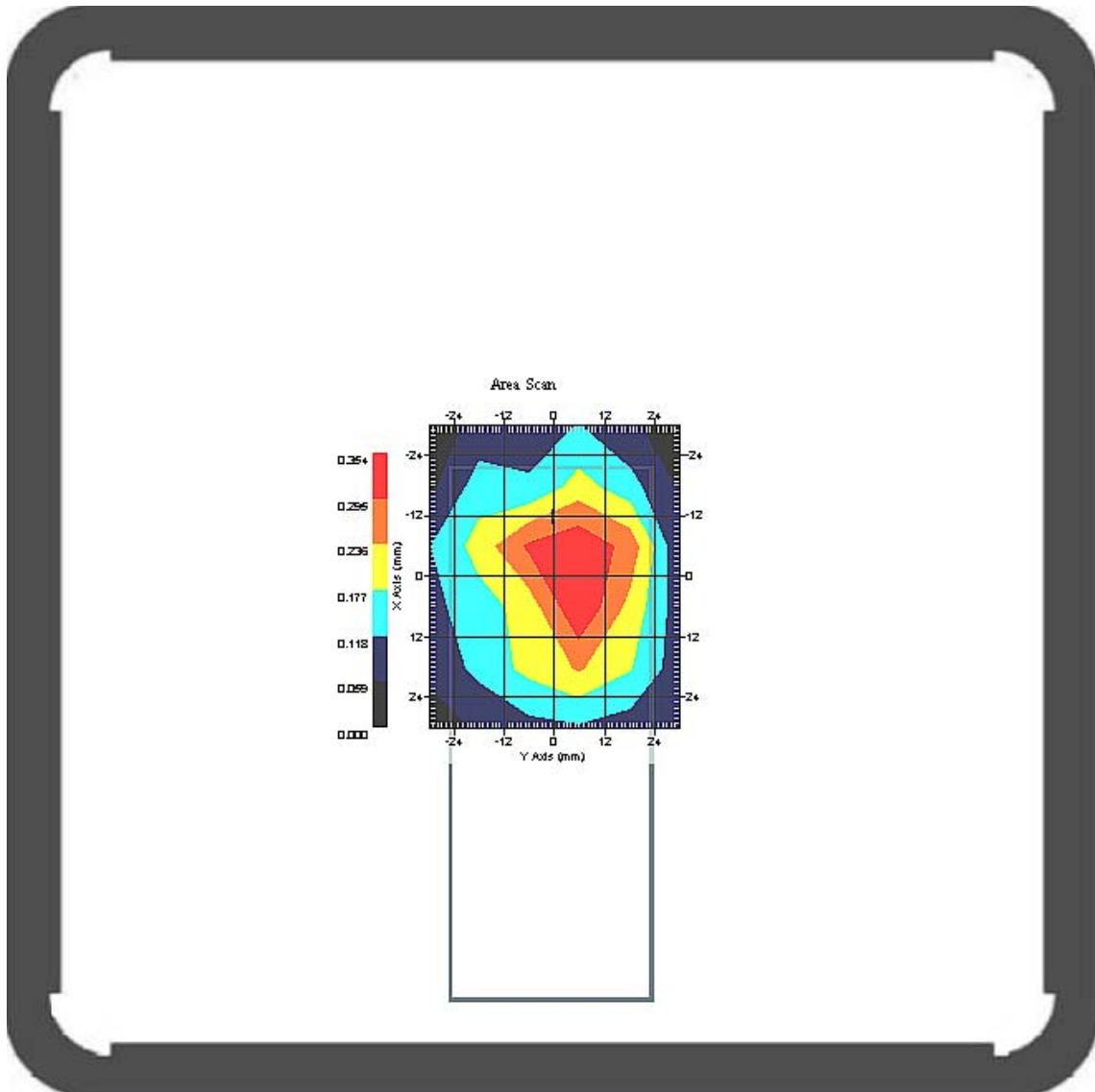
1 gram SAR value : 0.453 W/kg
 10 gram SAR value : 0.292 W/kg
 Area Scan Peak SAR : 0.508 W/kg
 Zoom Scan Peak SAR : 1.040 W/kg



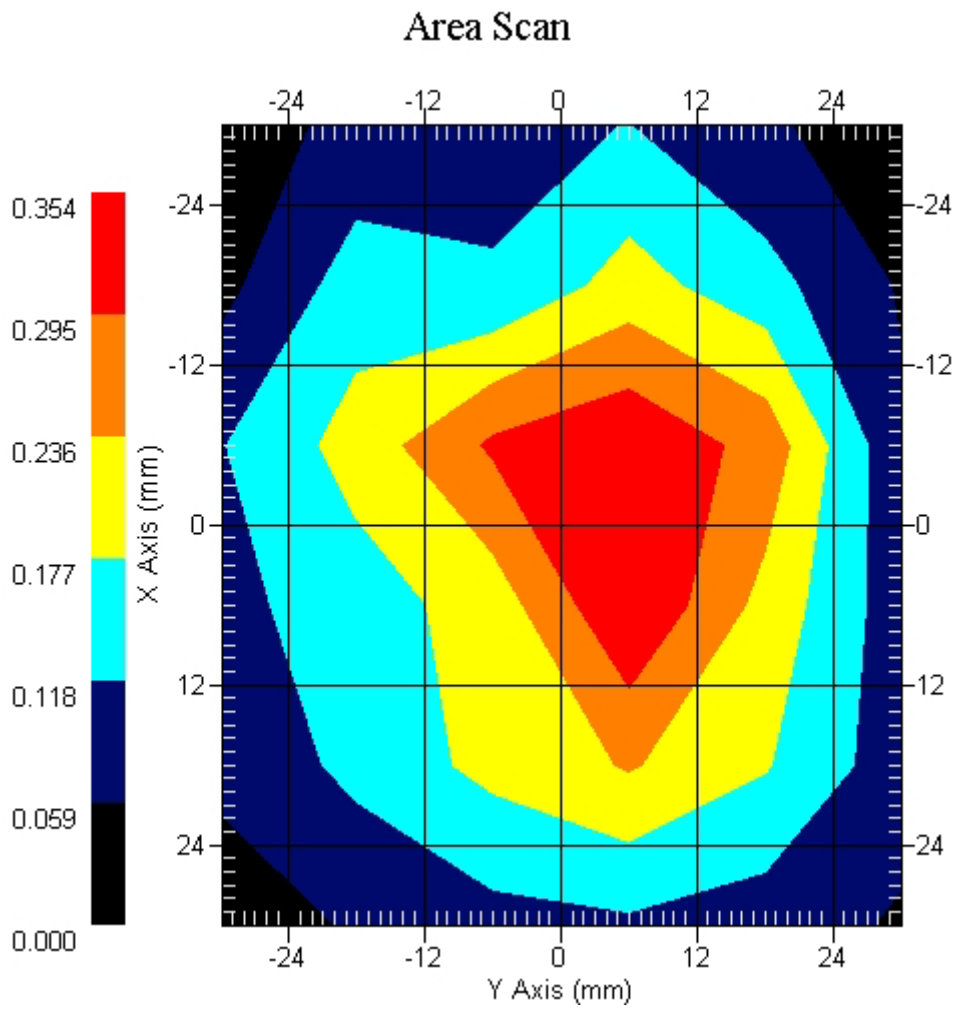
Measurement Data

Crest Factor : 1
 Tissue Temp. : 21.30 °C
 Ambient Temp. : 23.80 °C
 Area Scan : 6x6x1 : Measurement x=12mm, y=12mm, z=4mm
 Zoom Scan : 7x7x7 : Measurement x=5mm, y=5mm, z=5mm
 Power Drift-Start : 0.292 W/kg
 Power Drift-Finish: 0.284 W/kg
 Power Drift (%) : -2.744

DUT Position : Touch
 Channel : 810



1 gram SAR value : 0.373 W/kg
 10 gram SAR value : 0.210 W/kg
 Area Scan Peak SAR : 0.353 W/kg
 Zoom Scan Peak SAR : 0.660 W/kg



SAR Measurement Data

ALSAS-10U VER 2.3.2 APREL Laboratories

SAR Test Report- 802.11b

Report Date : 20-Jul-2007
Measurement Date : 20-Jul-2007

Product Data

Device Name : Mobile Phone
Type : Std Form Cell Phone
Model : WIGO 800i
Frequency : 2450.00 MHz
Drift Time : 0 min(s)
Length : 125.3 mm
Width : 49.1 mm
Depth : 21 mm
Antenna Type : Internal

Phantom Data

Type : SAM-Right
Size (mm) : 280 x 280 x 280
Location : Right

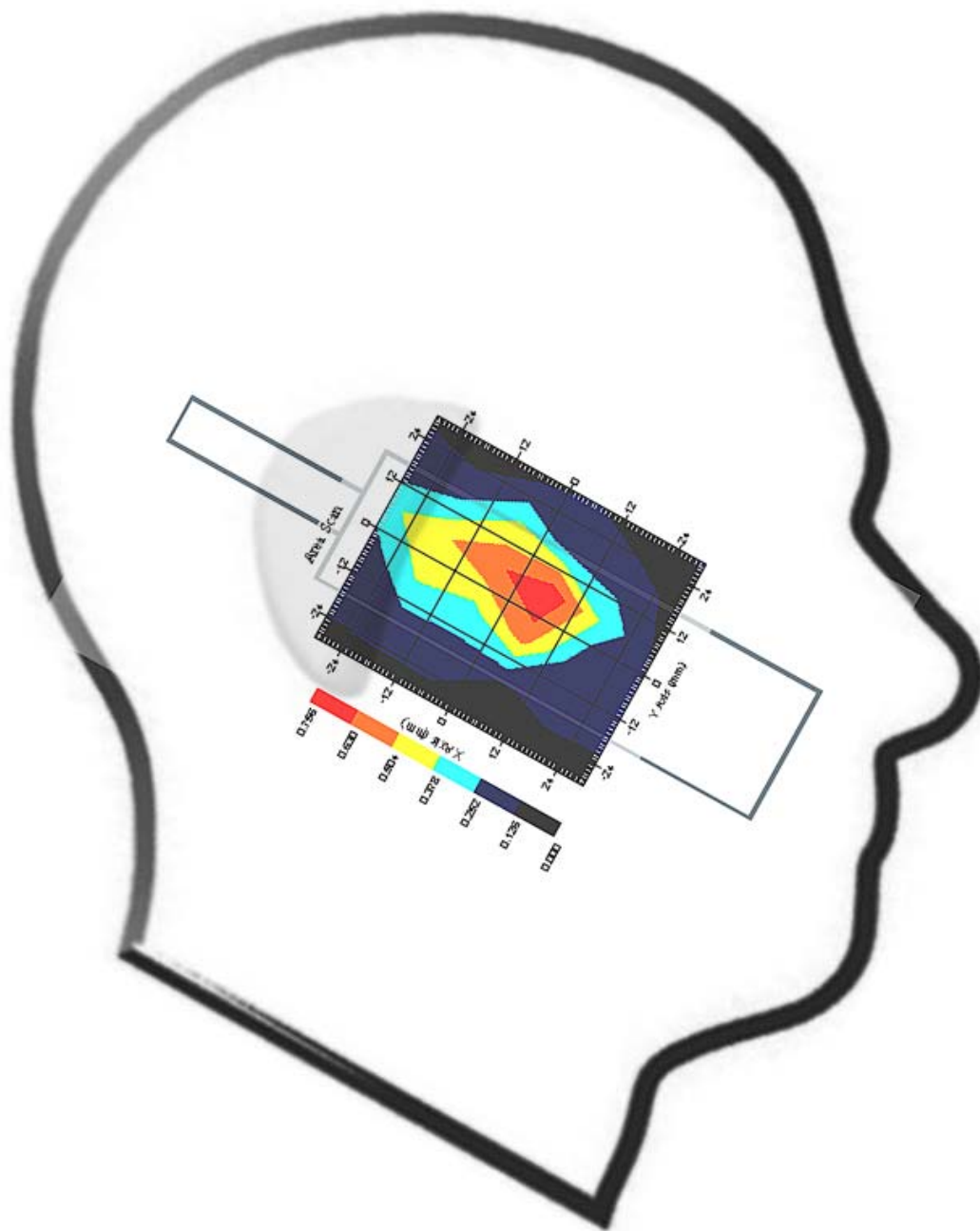
Tissue Data

Type : HEAD
Serial No. : 325-H
Frequency : 2450.00 MHz
Last Calib. Date : 20-Jul-2007
Temperature : 23.60 °C
Ambient Temp. : 24.20 °C
Humidity : 46.00 RH%
Epsilon : 40.22 F/m
Sigma : 1.793 S/m
Density : 1000.00 kg/cu. m

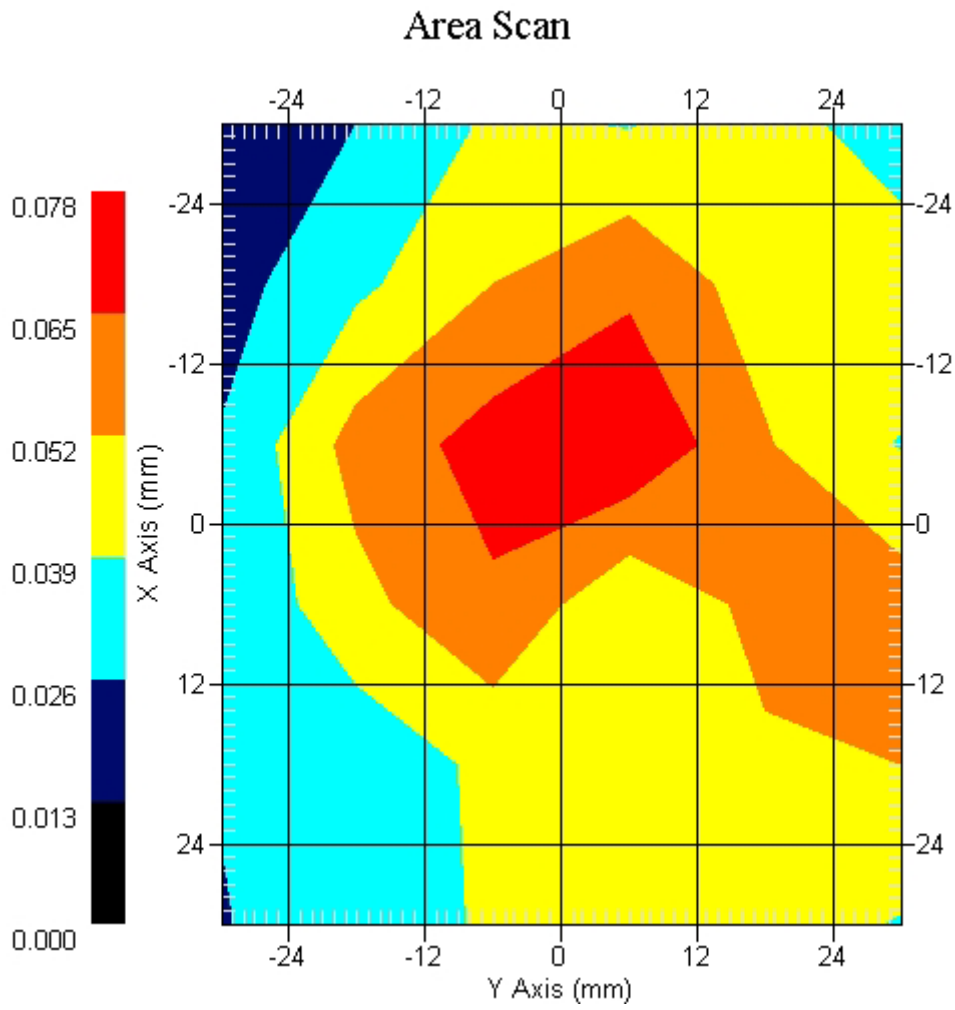
Probe Data

Name : Probe 261
Model : E020
Type : E-Field Triangle
Serial No. : 261
Last Calib. Date : 5-Apr-2007
Frequency : 2450.00 MHz
Duty Cycle Factor: 1
Conversion Factor: 4.85
Probe Sensitivity: 1.20 1.20 1.20 $\mu\text{V}/(\text{V}/\text{m})^2$
Compression Point: 95.00 mV
Offset : 1.56 mm

Measurement Data



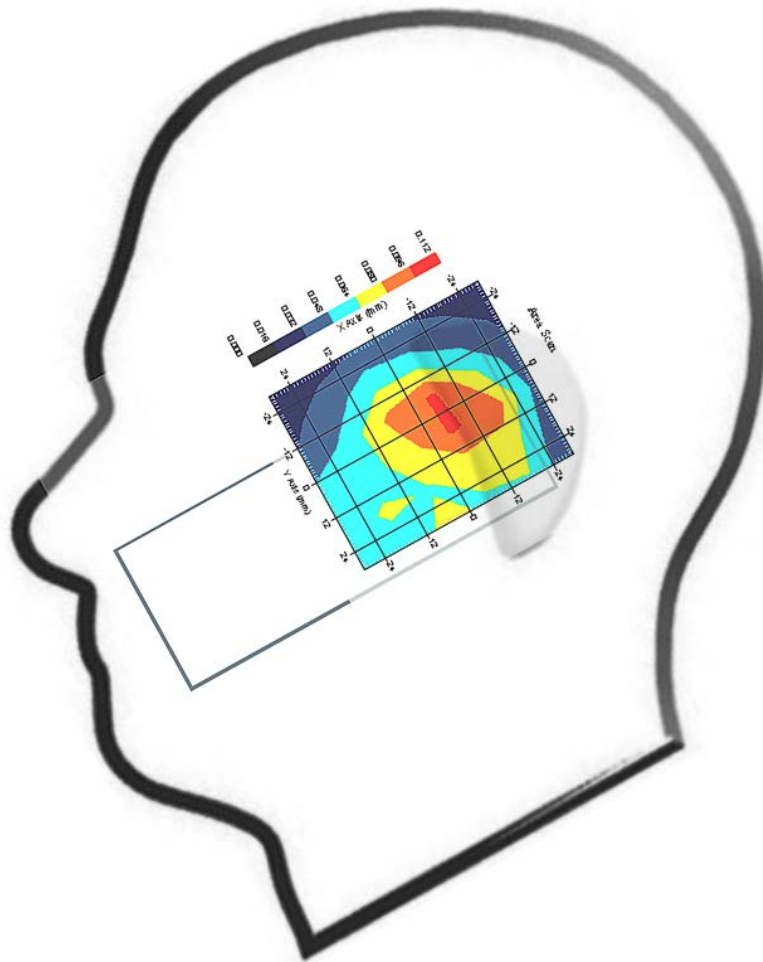
1 gram SAR value : 0.072 W/kg
 10 gram SAR value : 0.051 W/kg
 Area Scan Peak SAR : 0.077 W/kg
 Zoom Scan Peak SAR : 0.140 W/kg



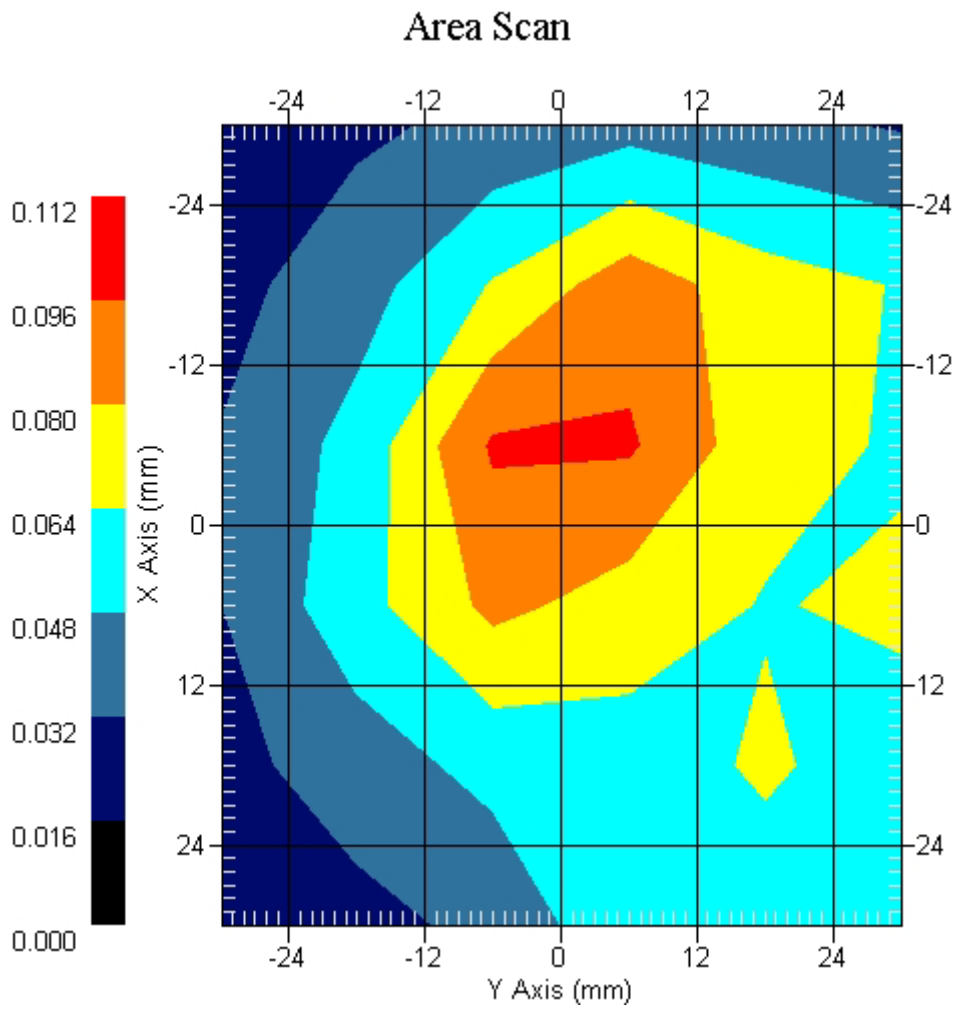
Measurement Data

Crest Factor : 1
Tissue Temp. : 23.60 °C
Ambient Temp. : 24.20 °C
Area Scan : 6x6x1 : Measurement x=12mm, y=12mm, z=4mm
Zoom Scan : 7x7x7 : Measurement x=5mm, y=5mm, z=5mm
Power Drift-Start : 0.069 W/kg
Power Drift-Finish: 0.071 W/kg
Power Drift (%) : 2.806

DUT Position : Touch
Channel : 6



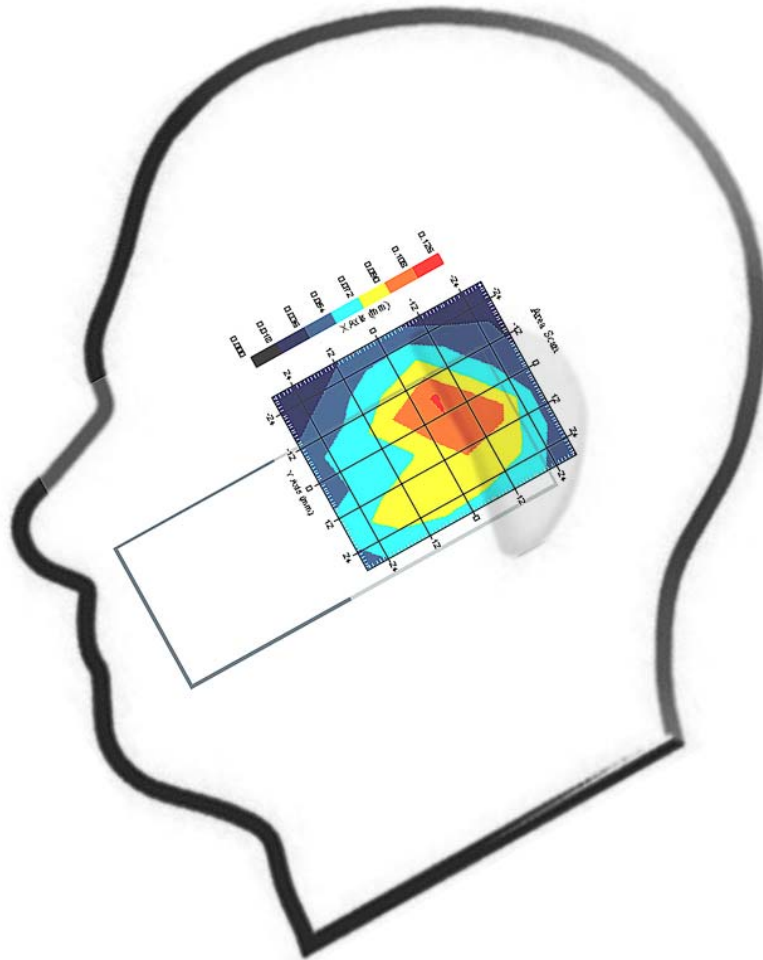
1 gram SAR value : 0.098 W/kg
10 gram SAR value : 0.062 W/kg
Area Scan Peak SAR : 0.098 W/kg
Zoom Scan Peak SAR : 0.170 W/kg



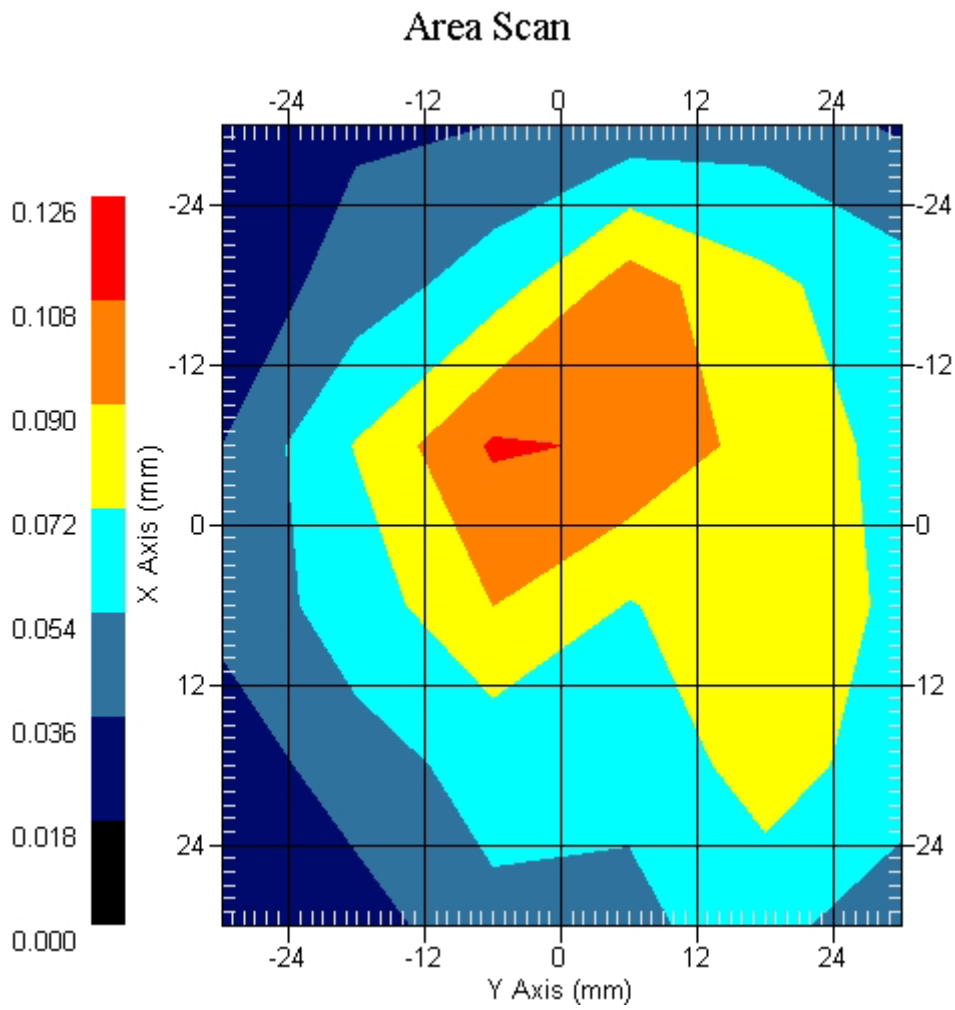
Measurement Data

Crest Factor : 1
Tissue Temp. : 23.60 °C
Ambient Temp. : 24.20 °C
Area Scan : 6x6x1 : Measurement x=12mm, y=12mm, z=4mm
Zoom Scan : 7x7x7 : Measurement x=5mm, y=5mm, z=5mm
Power Drift-Start : 0.076 W/kg
Power Drift-Finish: 0.073 W/kg
Power Drift (%) : -3.974

DUT Position : Touch
Channel : 11



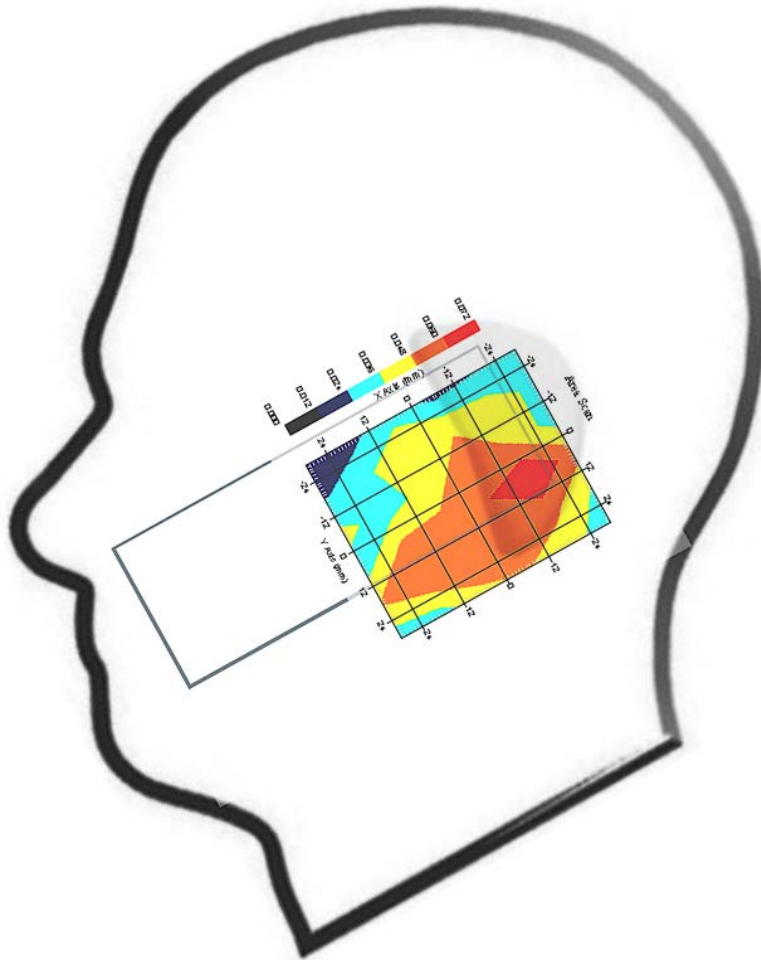
1 gram SAR value : 0.109 W/kg
10 gram SAR value : 0.064 W/kg
Area Scan Peak SAR : 0.110 W/kg
Zoom Scan Peak SAR : 0.200 W/kg



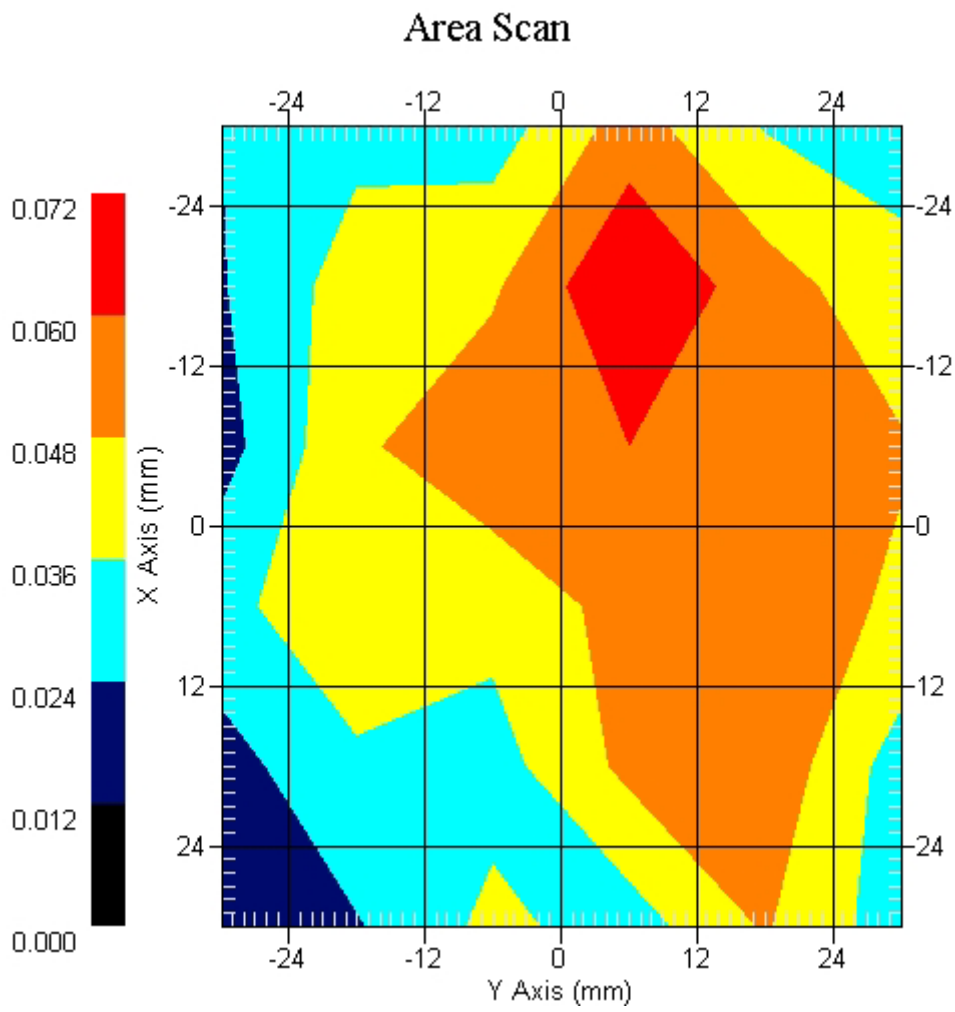
Measurement Data

Crest Factor : 1
Tissue Temp. : 23.60 °C
Ambient Temp. : 24.20 °C
Area Scan : 6x6x1 : Measurement x=12mm, y=12mm, z=4mm
Zoom Scan : 7x7x7 : Measurement x=5mm, y=5mm, z=5mm
Power Drift-Start : 0.053 W/kg
Power Drift-Finish: 0.055 W/kg
Power Drift (%) : 4.203

DUT Position : 15° Tilt
Channel : 1



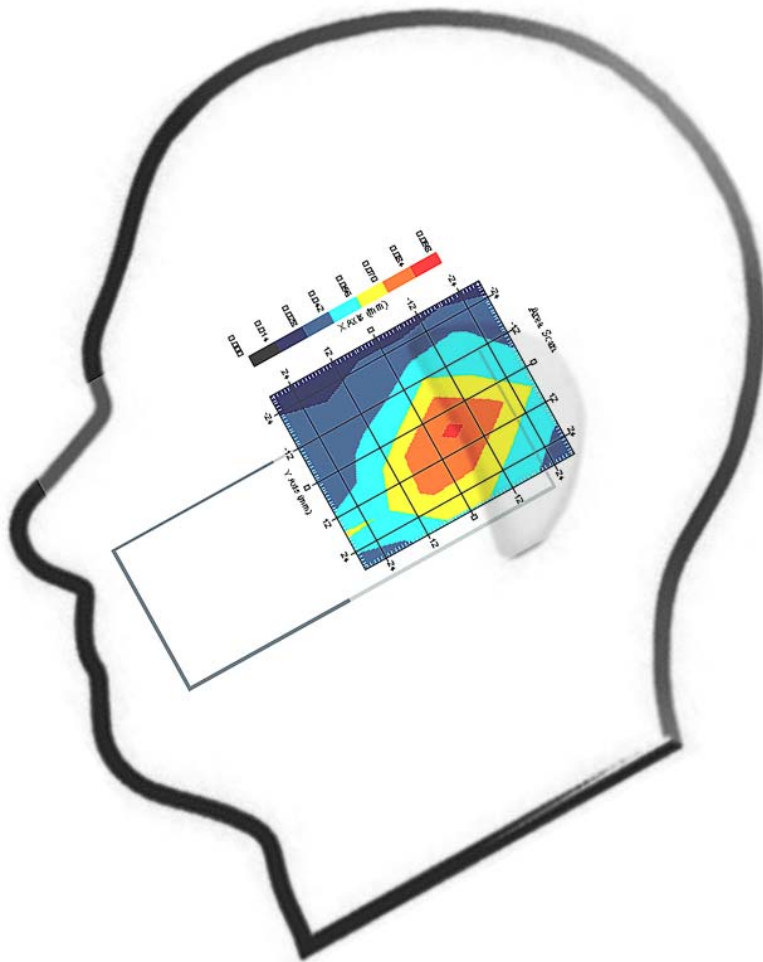
1 gram SAR value : 0.078 W/kg
10 gram SAR value : 0.048 W/kg
Area Scan Peak SAR : 0.072 W/kg
Zoom Scan Peak SAR : 0.180 W/kg



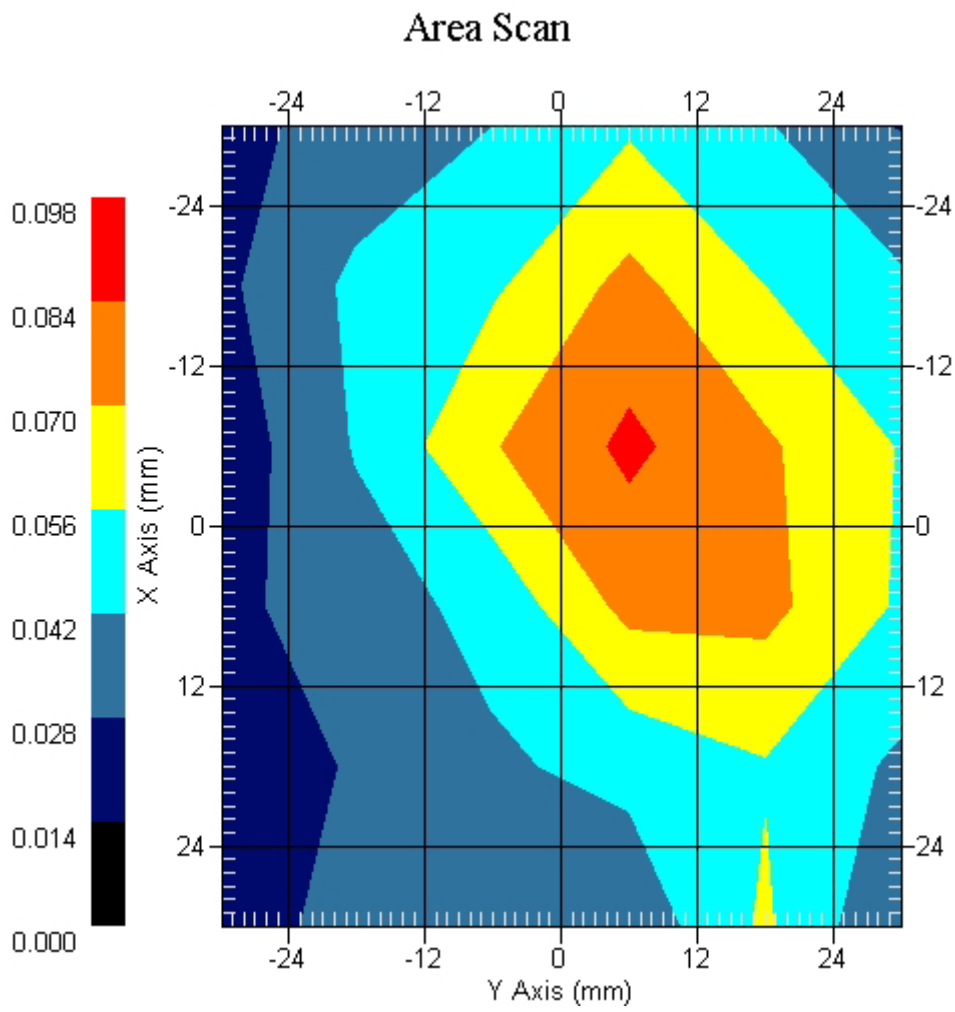
Measurement Data

Crest Factor : 1
 Tissue Temp. : 23.60 °C
 Ambient Temp. : 24.20 °C
 Area Scan : 6x6x1 : Measurement x=12mm, y=12mm, z=4mm
 Zoom Scan : 7x7x7 : Measurement x=5mm, y=5mm, z=5mm
 Power Drift-Start : 0.083 W/kg
 Power Drift-Finish: 0.081 W/kg
 Power Drift (%) : -2.494

DUT Position : 15° Tilt
 Channel : 6



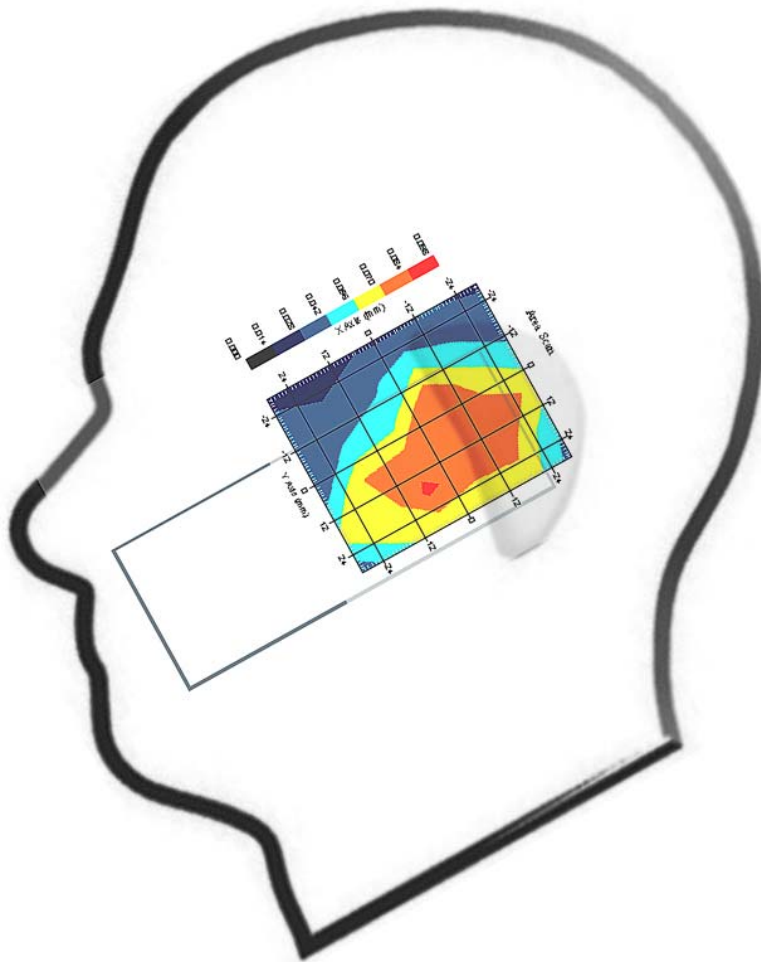
1 gram SAR value : 0.080 W/kg
 10 gram SAR value : 0.054 W/kg
 Area Scan Peak SAR : 0.087 W/kg
 Zoom Scan Peak SAR : 0.170 W/kg



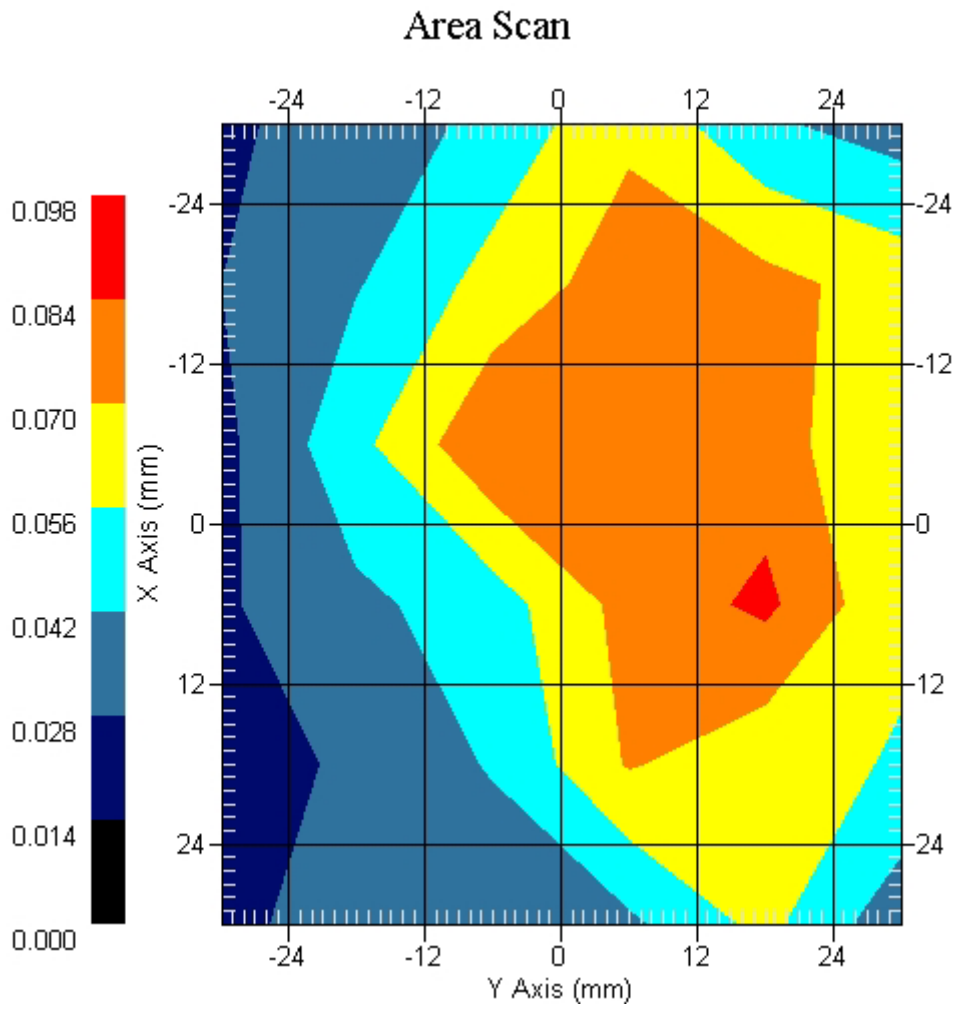
Measurement Data

Crest Factor : 1
Tissue Temp. : 23.60 °C
Ambient Temp. : 24.20 °C
Area Scan : 6x6x1 : Measurement x=12mm, y=12mm, z=4mm
Zoom Scan : 7x7x7 : Measurement x=5mm, y=5mm, z=5mm
Power Drift-Start : 0.063 W/kg
Power Drift-Finish: 0.061 W/kg
Power Drift (%) : -3.602

DUT Position : 15° Tilt
Channel : 11



1 gram SAR value : 0.105 W/kg
10 gram SAR value : 0.074 W/kg
Area Scan Peak SAR : 0.087 W/kg
Zoom Scan Peak SAR : 0.180 W/kg



ALSAS-10U VER 2.3.2 APREL Laboratories

SAR Test Report- 802.11b

Report Date : 20-Jul-2007
Measurement Date : 20-Jul-2007

Product Data

Device Name : Mobile Phone
Type : Std Form Cell Phone
Model : WIGO 800i
Frequency : 2450.00 MHz
Drift Time : 0 min(s)
Length : 125.3 mm
Width : 49.1 mm
Depth : 21 mm
Antenna Type : Internal

Phantom Data

Type : SAM-Left
Size (mm) : 280 x 280 x 280
Location : Left

Tissue Data

Type : HEAD
Serial No. : 325-H
Frequency : 2450.00 MHz
Last Calib. Date : 20-Jul-2007
Temperature : 23.60 °C
Ambient Temp. : 24.20 °C
Humidity : 46.00 RH%
Epsilon : 40.22 F/m
Sigma : 1.793 S/m
Density : 1000.00 kg/cu. m

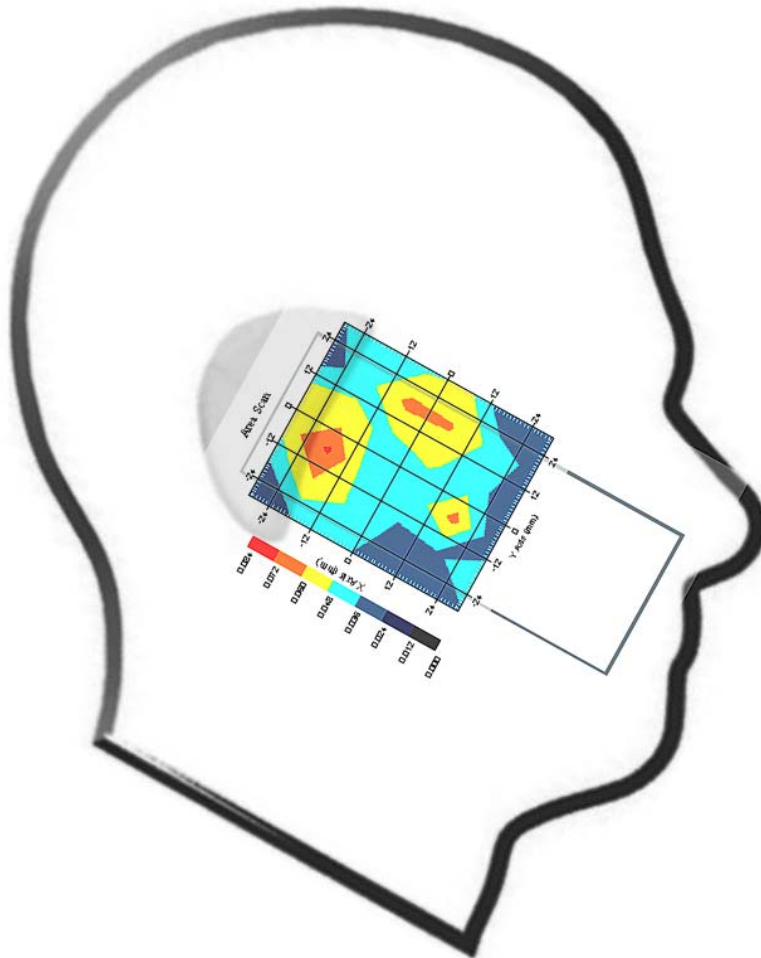
Probe Data

Name : Probe 261
Model : E020
Type : E-Field Triangle
Serial No. : 261
Last Calib. Date : 5-Apr-2007
Frequency : 2450.00 MHz
Duty Cycle Factor: 1
Conversion Factor: 4.85
Probe Sensitivity: 1.20 1.20 1.20 $\mu\text{V}/(\text{V}/\text{m})^2$
Compression Point: 95.00 mV
Offset : 1.56 mm

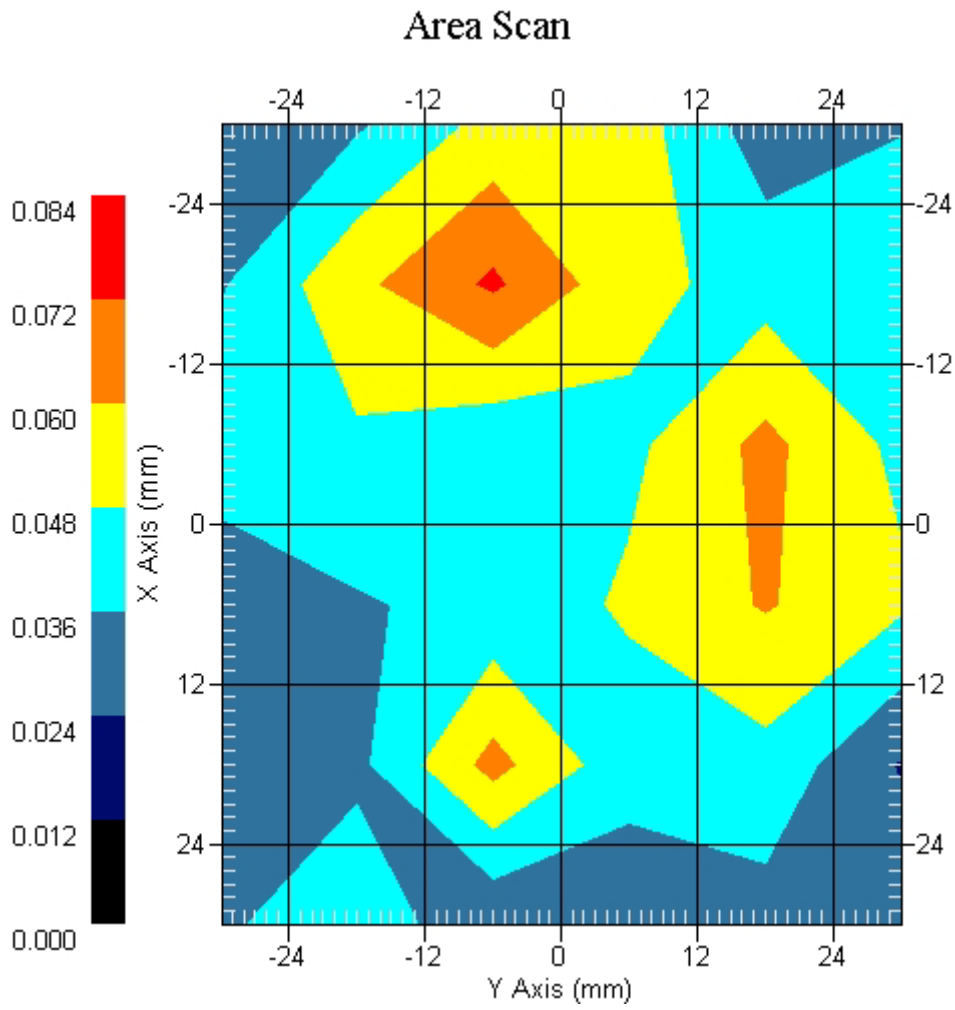
Measurement Data

Crest Factor : 1
Tissue Temp. : 23.60 °C
Ambient Temp. : 24.20 °C
Area Scan : 6x6x1 : Measurement x=12mm, y=12mm, z=4mm
Zoom Scan : 7x7x7 : Measurement x=5mm, y=5mm, z=5mm
Power Drift-Start : 0.068 W/kg
Power Drift-Finish: 0.068 W/kg
Power Drift (%) : -0.505

DUT Position : Touch
Channel : 1



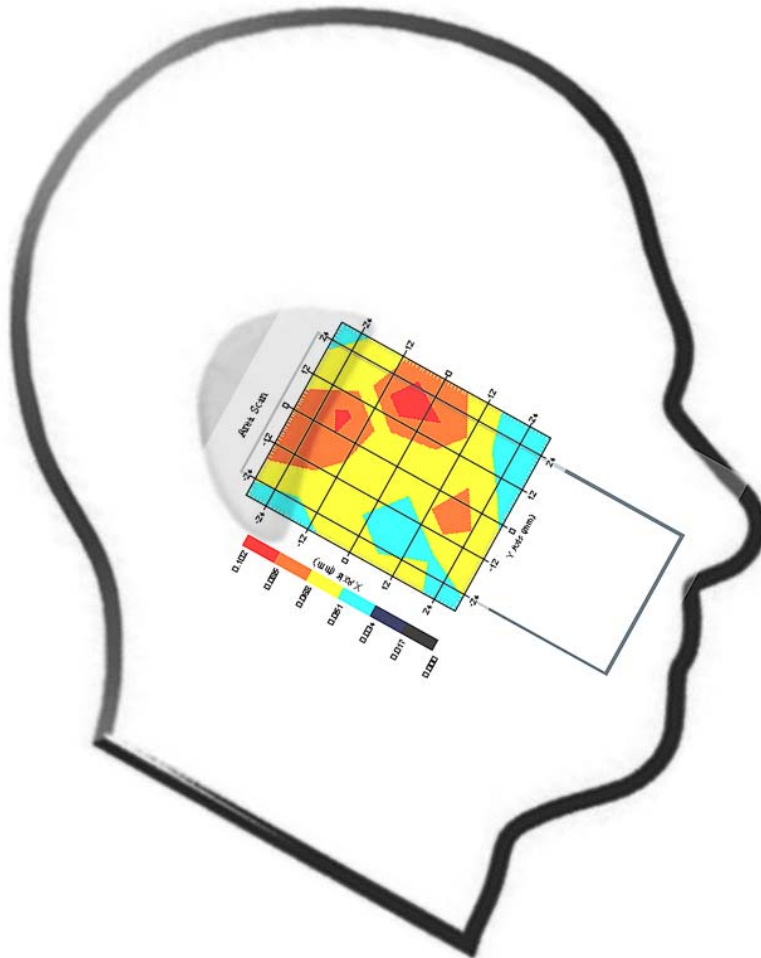
1 gram SAR value : 0.061 W/kg
10 gram SAR value : 0.045 W/kg
Area Scan Peak SAR : 0.074 W/kg
Zoom Scan Peak SAR : 0.120 W/kg



Measurement Data

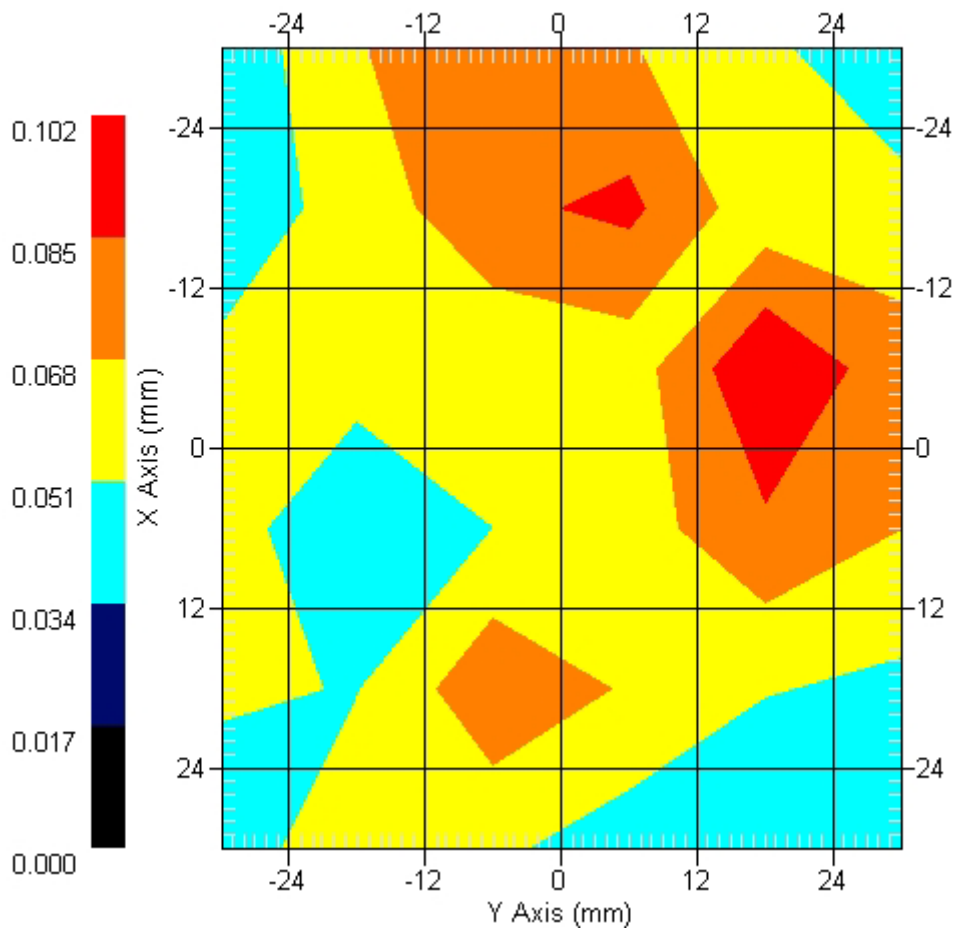
Crest Factor : 1
Tissue Temp. : 23.60 °C
Ambient Temp. : 24.20 °C
Area Scan : 6x6x1 : Measurement x=12mm, y=12mm, z=4mm
Zoom Scan : 7x7x7 : Measurement x=5mm, y=5mm, z=5mm
Power Drift-Start : 0.085 W/kg
Power Drift-Finish: 0.082 W/kg
Power Drift (%) : -3.587

DUT Position : Touch
Channel : 6



1 gram SAR value : 0.088 W/kg
10 gram SAR value : 0.063 W/kg
Area Scan Peak SAR : 0.101 W/kg
Zoom Scan Peak SAR : 0.140 W/kg

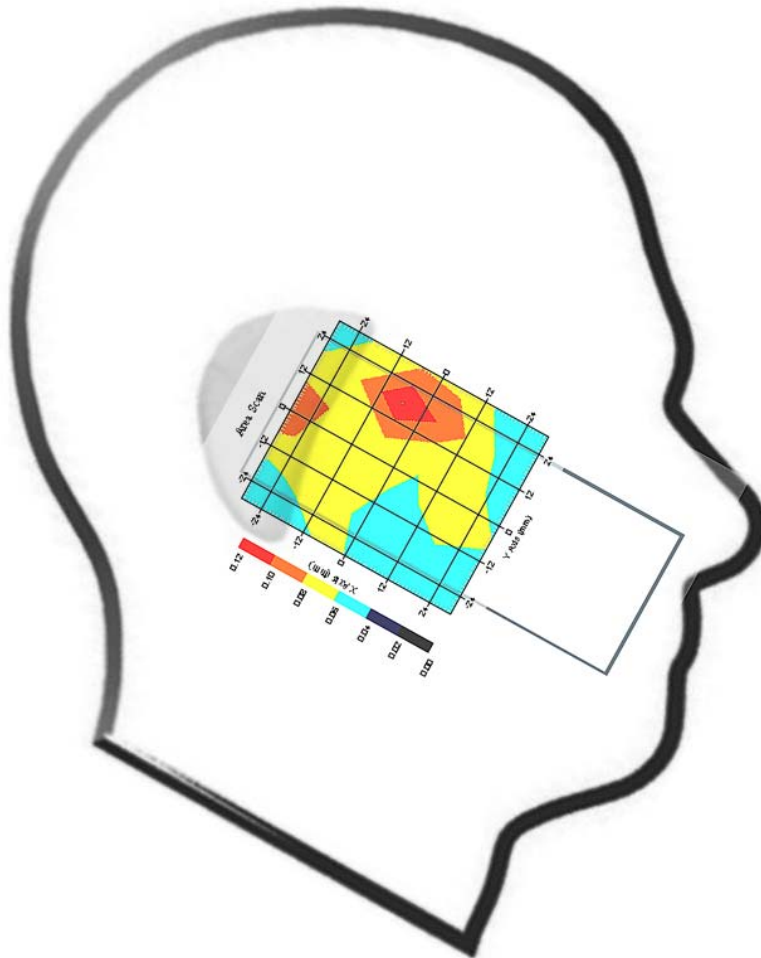
Area Scan



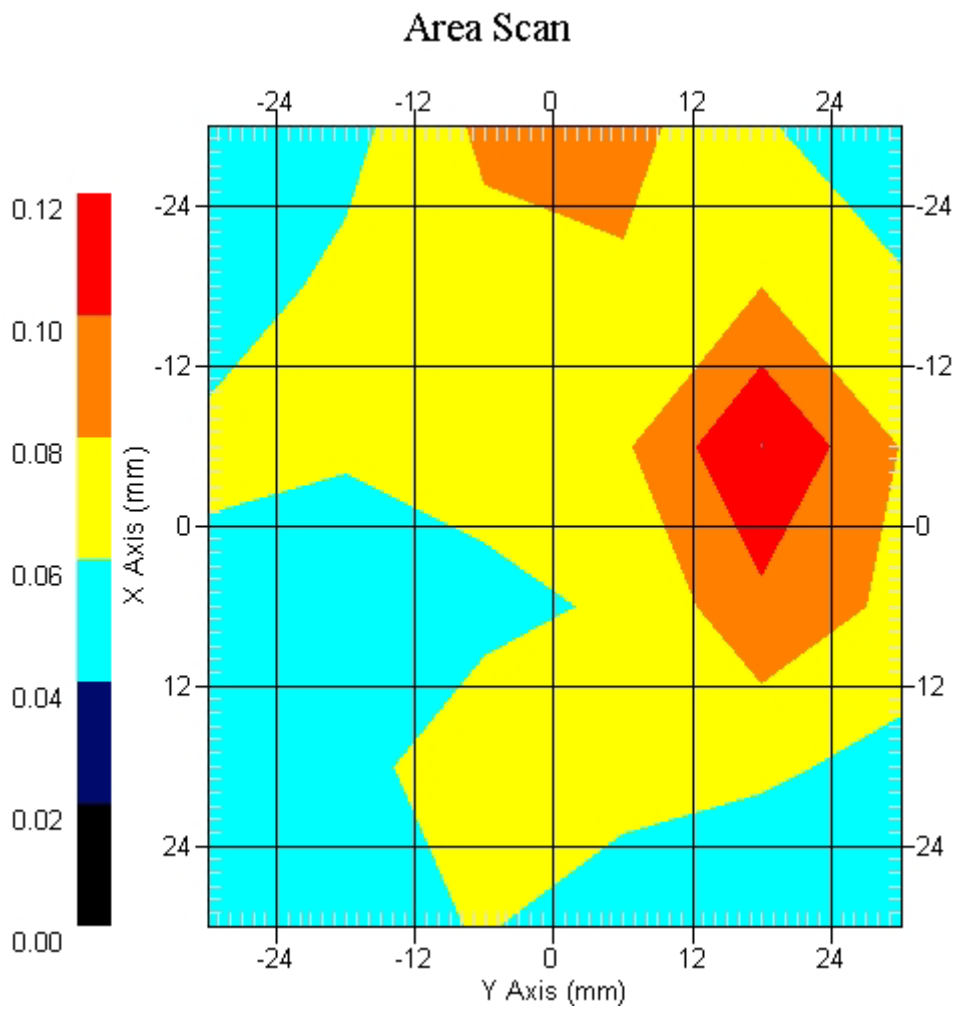
Measurement Data

Crest Factor : 1
Tissue Temp. : 23.60 °C
Ambient Temp. : 24.20 °C
Area Scan : 6x6x1 : Measurement x=12mm, y=12mm, z=4mm
Zoom Scan : 7x7x7 : Measurement x=5mm, y=5mm, z=5mm
Power Drift-Start : 0.082 W/kg
Power Drift-Finish: 0.079 W/kg
Power Drift (%) : -3.653

DUT Position : Touch
Channel : 11



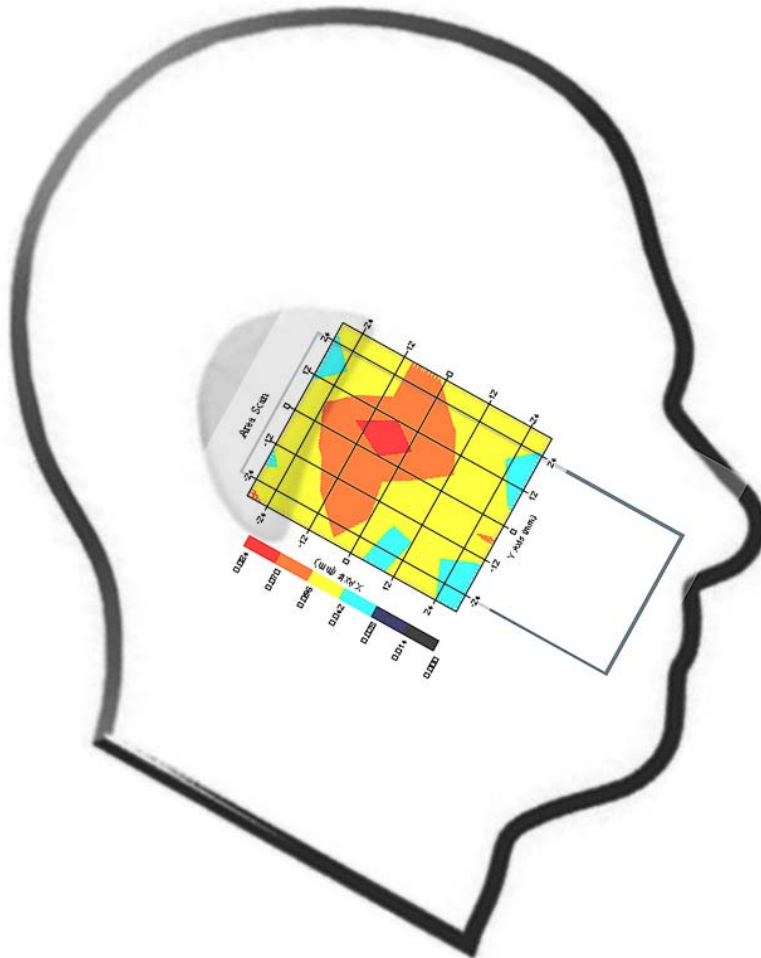
1 gram SAR value : 0.085 W/kg
10 gram SAR value : 0.056 W/kg
Area Scan Peak SAR : 0.120 W/kg
Zoom Scan Peak SAR : 0.170 W/kg



Measurement Data

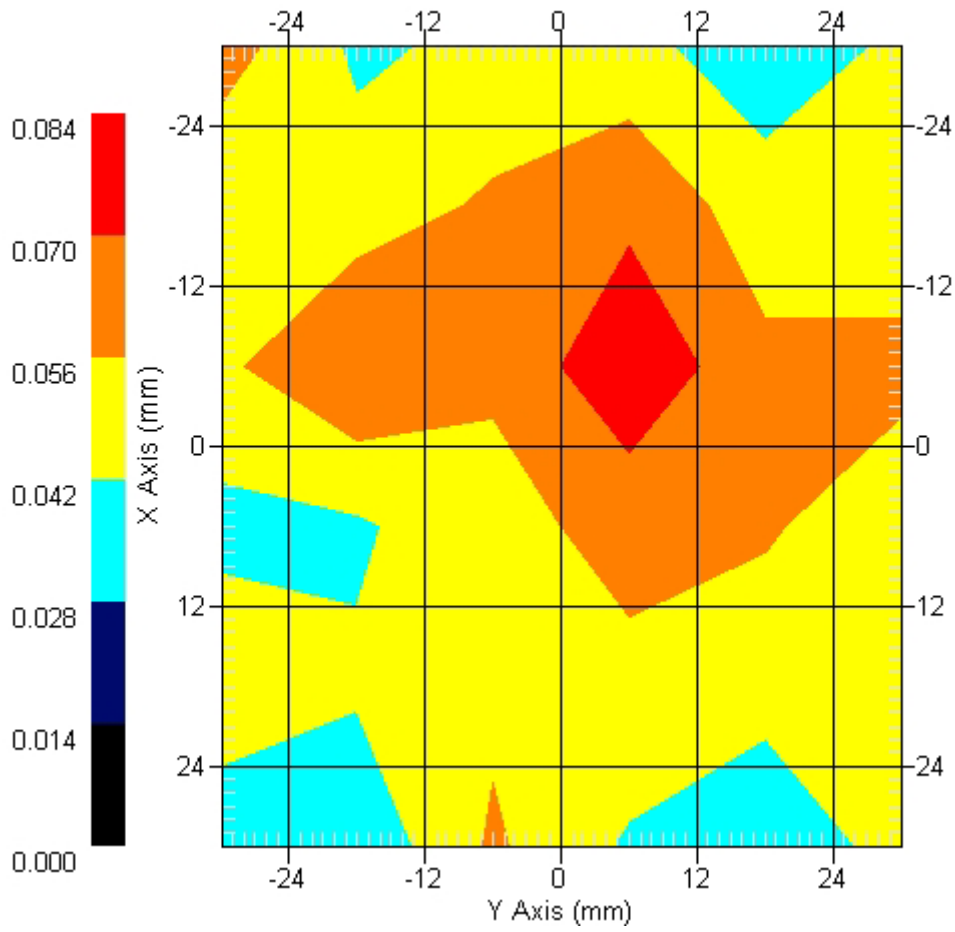
Crest Factor : 1
Tissue Temp. : 23.60 °C
Ambient Temp. : 24.20 °C
Area Scan : 6x6x1 : Measurement x=12mm, y=12mm, z=4mm
Zoom Scan : 7x7x7 : Measurement x=5mm, y=5mm, z=5mm
Power Drift-Start : 0.062 W/kg
Power Drift-Finish: 0.060 W/kg
Power Drift (%) : -3.226

DUT Position : 15° Tilt
Channel : 1



1 gram SAR value : 0.082 W/kg
10 gram SAR value : 0.065 W/kg
Area Scan Peak SAR : 0.082 W/kg
Zoom Scan Peak SAR : 0.110 W/kg

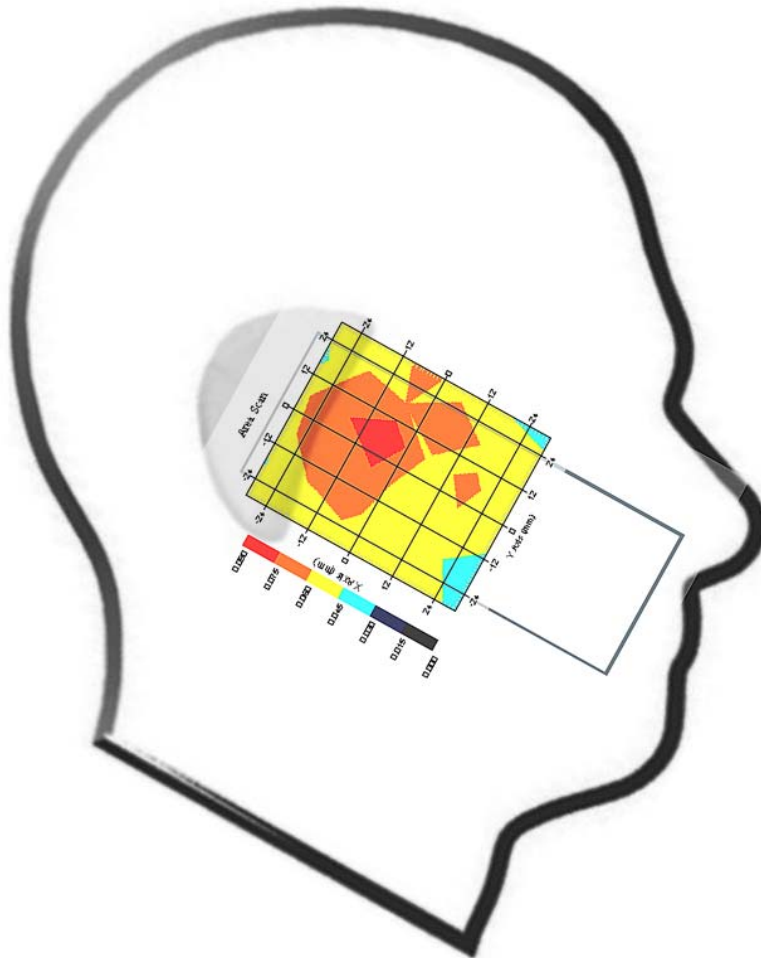
Area Scan



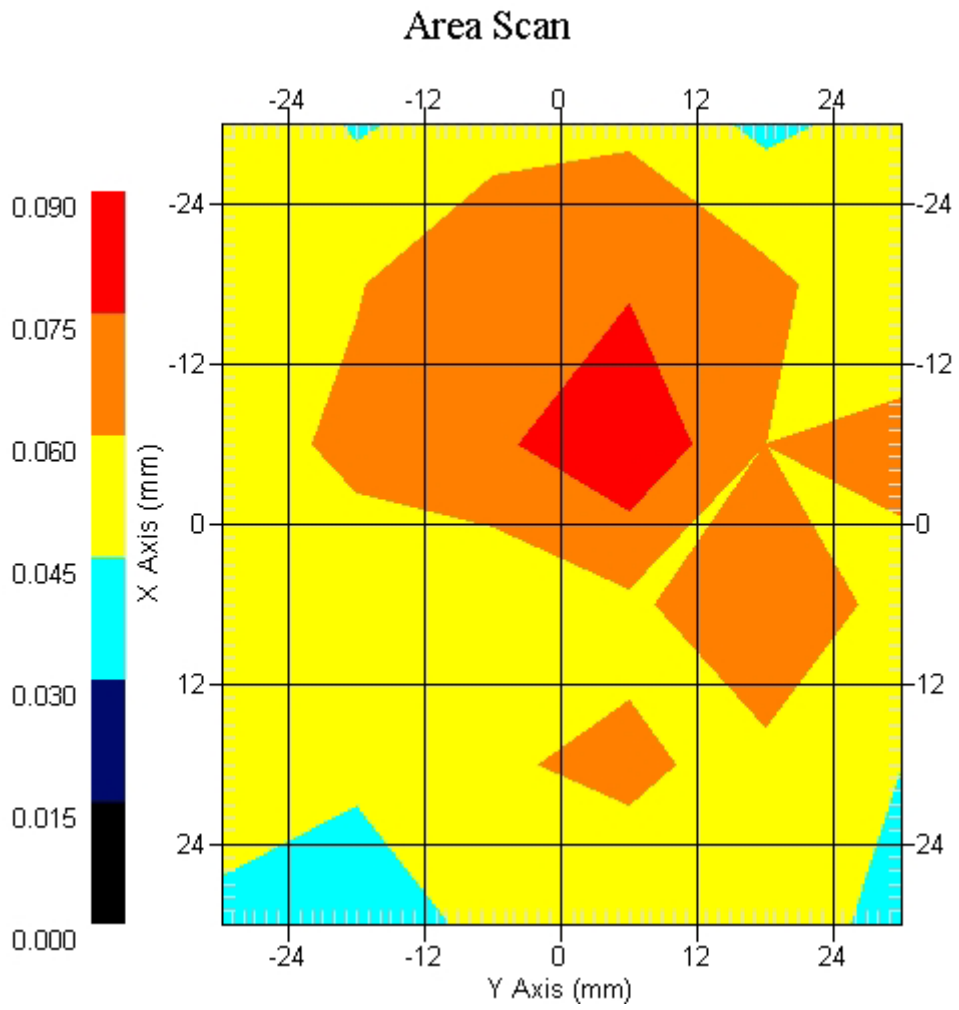
Measurement Data

Crest Factor : 1
Tissue Temp. : 23.60 °C
Ambient Temp. : 24.20 °C
Area Scan : 6x6x1 : Measurement x=12mm, y=12mm, z=4mm
Zoom Scan : 7x7x7 : Measurement x=5mm, y=5mm, z=5mm
Power Drift-Start : 0.066 W/kg
Power Drift-Finish: 0.068 W/kg
Power Drift (%) : 2.149

DUT Position : 15° Tilt
Channel : 6



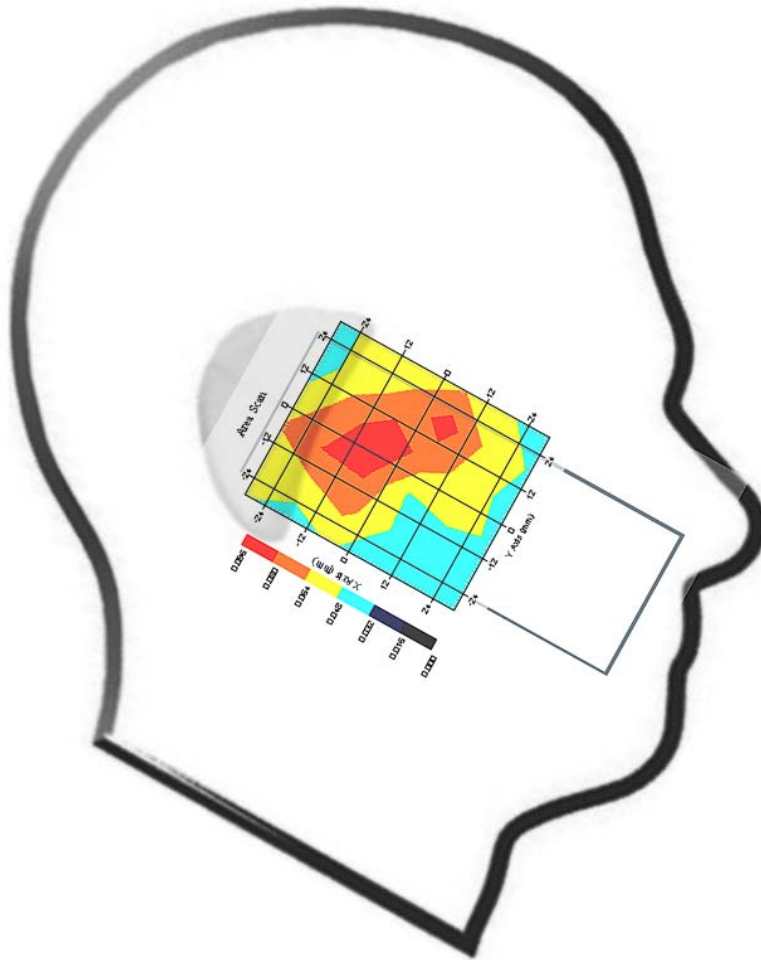
1 gram SAR value : 0.076 W/kg
10 gram SAR value : 0.057 W/kg
Area Scan Peak SAR : 0.088 W/kg
Zoom Scan Peak SAR : 0.130 W/kg



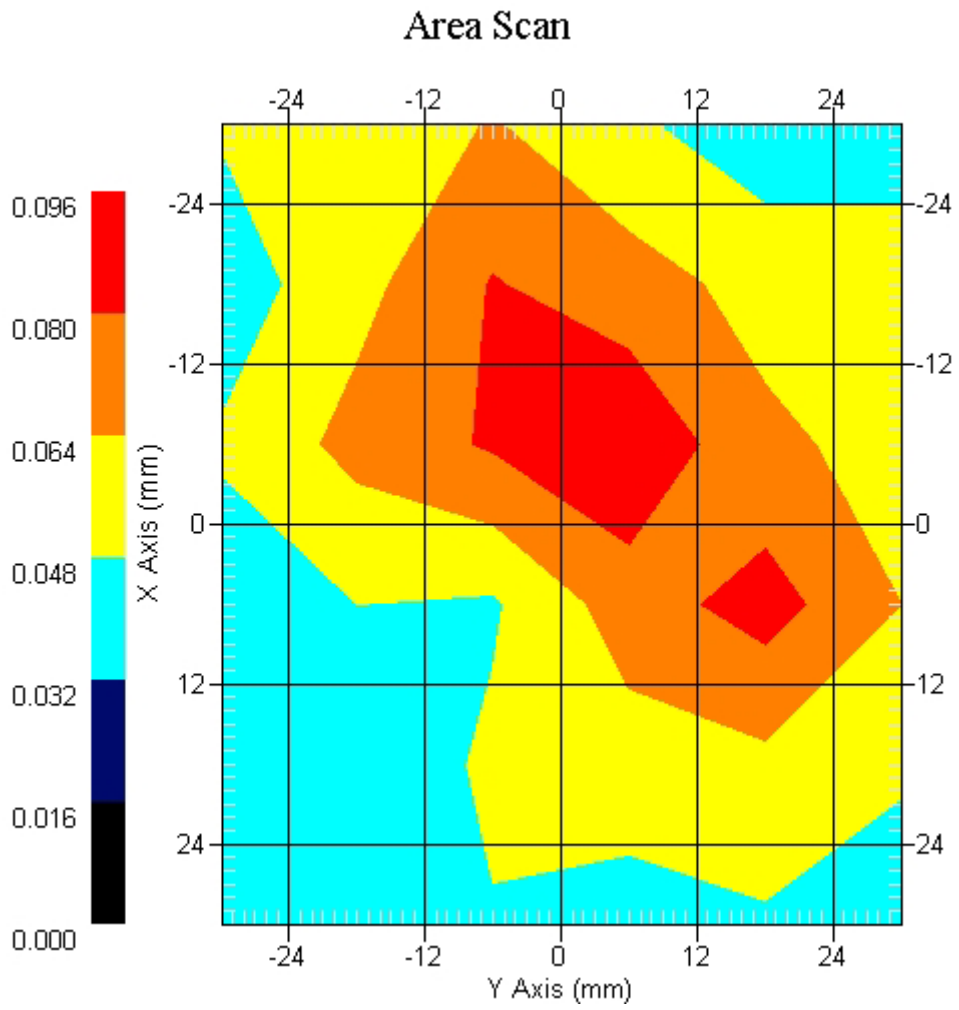
Measurement Data

Crest Factor : 1
Tissue Temp. : 23.60 °C
Ambient Temp. : 24.20 °C
Area Scan : 6x6x1 : Measurement x=12mm, y=12mm, z=4mm
Zoom Scan : 7x7x7 : Measurement x=5mm, y=5mm, z=5mm
Power Drift-Start : 0.079 W/kg
Power Drift-Finish: 0.080 W/kg
Power Drift (%) : 0.400

DUT Position : 15° Tilt
Channel : 11



1 gram SAR value : 0.087 W/kg
10 gram SAR value : 0.062 W/kg
Area Scan Peak SAR : 0.094 W/kg
Zoom Scan Peak SAR : 0.140 W/kg



ALSAS-10U VER 2.3.2 APREL Laboratories

SAR Test Report- 802.11b

Report Date : 20-Jul-2007
Measurement Date : 20-Jul-2007

Product Data

Device Name : Mobile Phone
Type : Std Form Cell Phone
Model : WIGO 800i
Frequency : 2450.00 MHz
Drift Time : 0 min(s)
Length : 125.3 mm
Width : 49.1 mm
Depth : 21 mm
Antenna Type : Internal

Phantom Data

Type : Uni-Phantom
Size (mm) : 280 x 280 x 200
Location : Center

Tissue Data

Type : BODY
Serial No. : 325-B
Frequency : 2450.00 MHz
Last Calib. Date : 20-Jul-2007
Temperature : 23.60 °C
Ambient Temp. : 24.20 °C
Humidity : 46.00 RH%
Epsilon : 51.33 F/m
Sigma : 1.966 S/m
Density : 1000.00 kg/cu. m

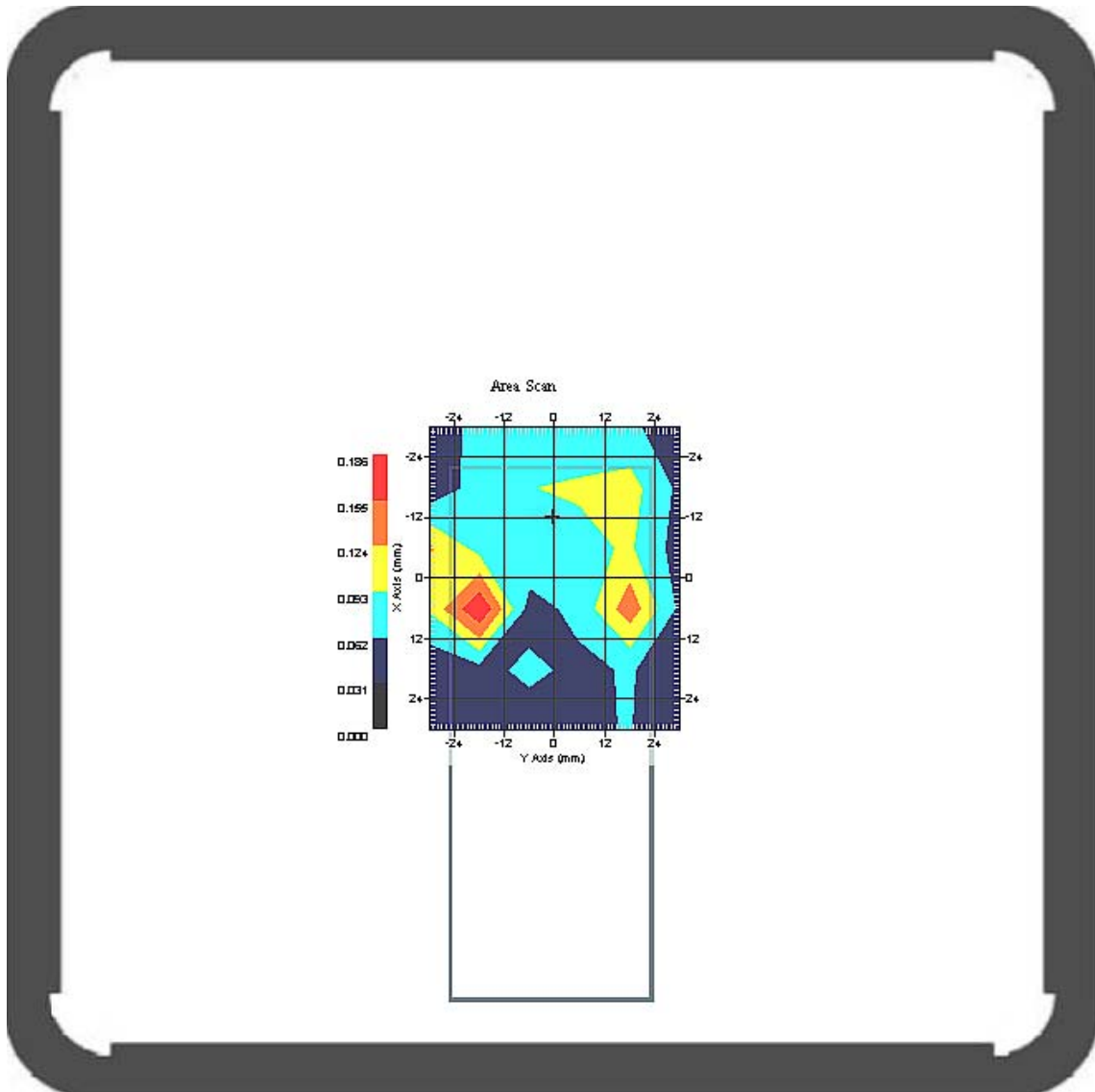
Probe Data

Name : Probe 261
Model : E020
Type : E-Field Triangle
Serial No. : 261
Last Calib. Date : 5-Apr-2007
Frequency : 2450.00 MHz
Duty Cycle Factor: 1
Conversion Factor: 4.4
Probe Sensitivity: 1.20 1.20 1.20 $\mu\text{V}/(\text{V}/\text{m})^2$
Compression Point: 95.00 mV
Offset : 1.56 mm

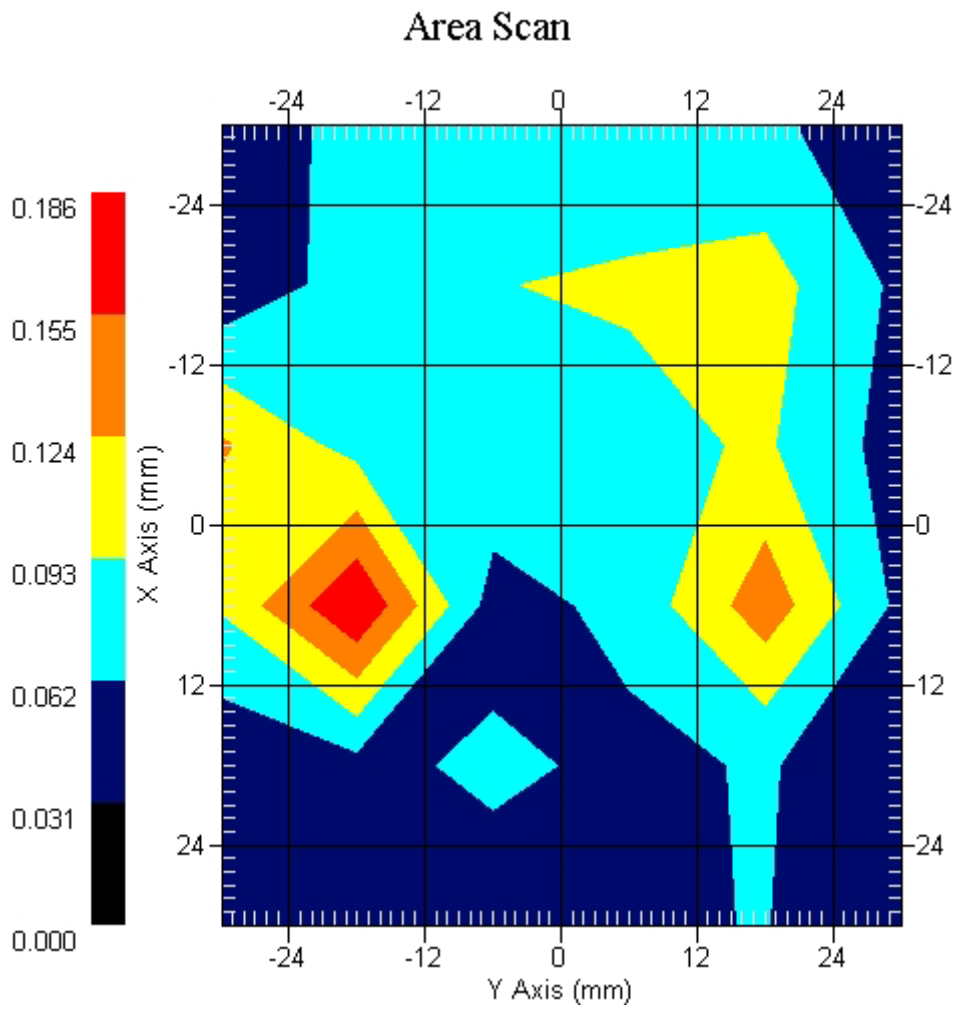
Measurement Data

Crest Factor : 1
Tissue Temp. : 23.60 °C
Ambient Temp. : 24.20 °C
Area Scan : 6x6x1 : Measurement x=12mm, y=12mm, z=4mm
Zoom Scan : 7x7x7 : Measurement x=5mm, y=5mm, z=5mm
Power Drift-Start : 0.097 W/kg
Power Drift-Finish: 0.094 W/kg
Power Drift (%) : -3.026

DUT Position : Touch
Channel : 1



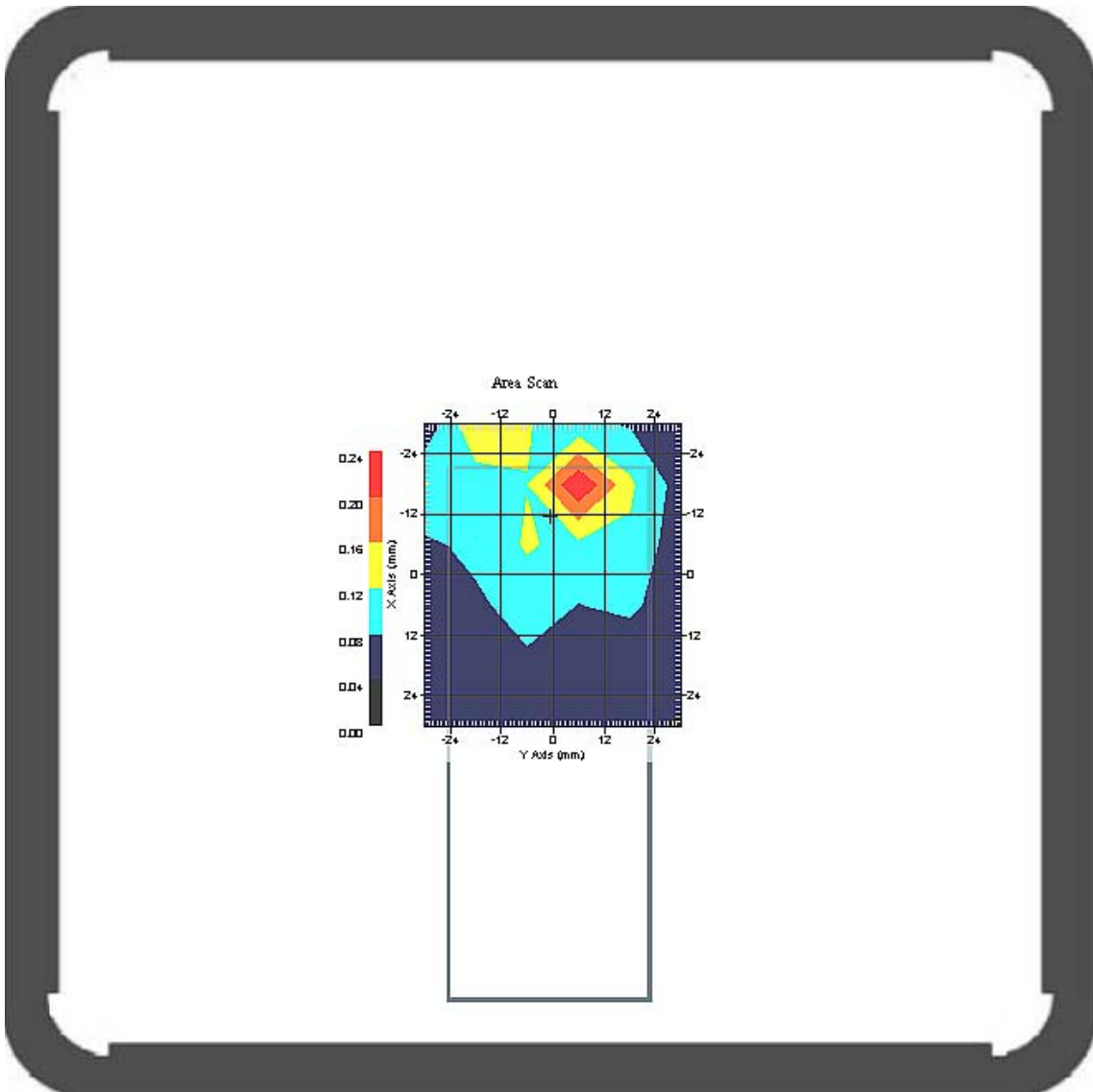
1 gram SAR value : 0.162 W/kg
10 gram SAR value : 0.069 W/kg
Area Scan Peak SAR : 0.185 W/kg
Zoom Scan Peak SAR : 0.320 W/kg



Measurement Data

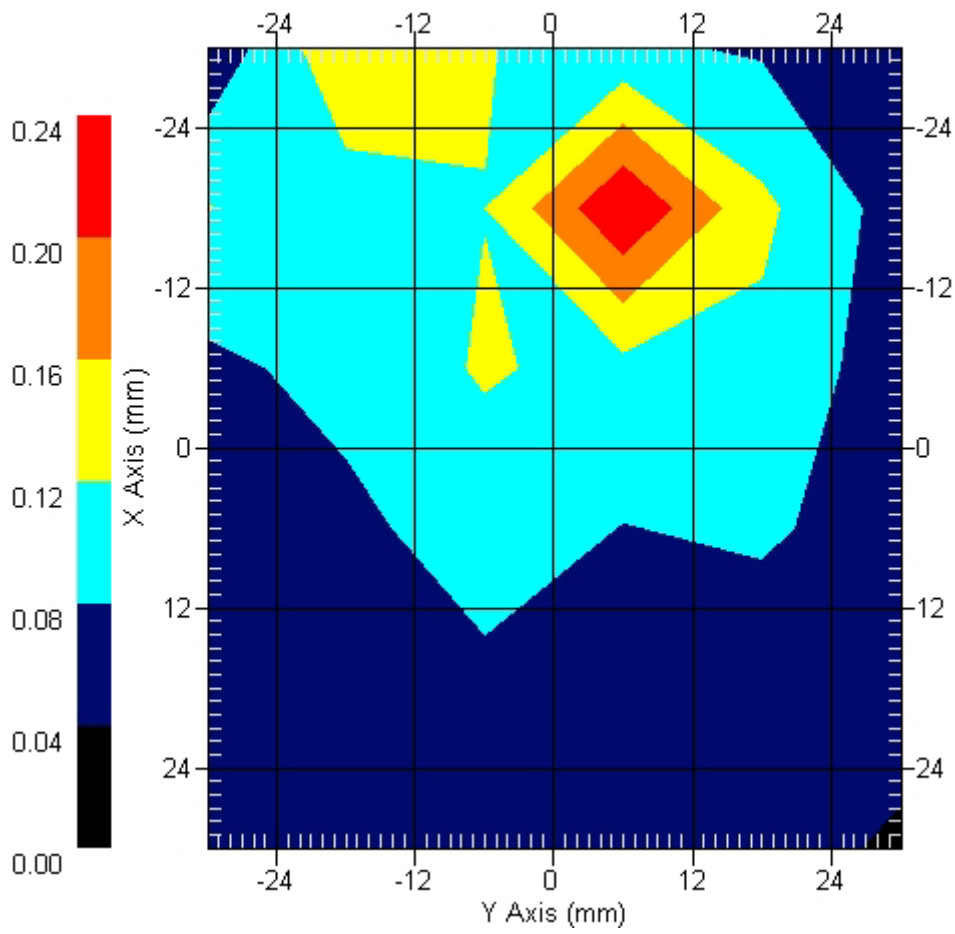
Crest Factor : 1
 Tissue Temp. : 23.60 °C
 Ambient Temp. : 24.20 °C
 Area Scan : 6x6x1 : Measurement x=12mm, y=12mm, z=4mm
 Zoom Scan : 7x7x7 : Measurement x=5mm, y=5mm, z=5mm
 Power Drift-Start : 0.161 W/kg
 Power Drift-Finish: 0.164 W/kg
 Power Drift (%) : 1.899

DUT Position : Touch
 Channel : 6



1 gram SAR value : 0.189 W/kg
 10 gram SAR value : 0.105 W/kg
 Area Scan Peak SAR : 0.239 W/kg
 Zoom Scan Peak SAR : 0.320 W/kg

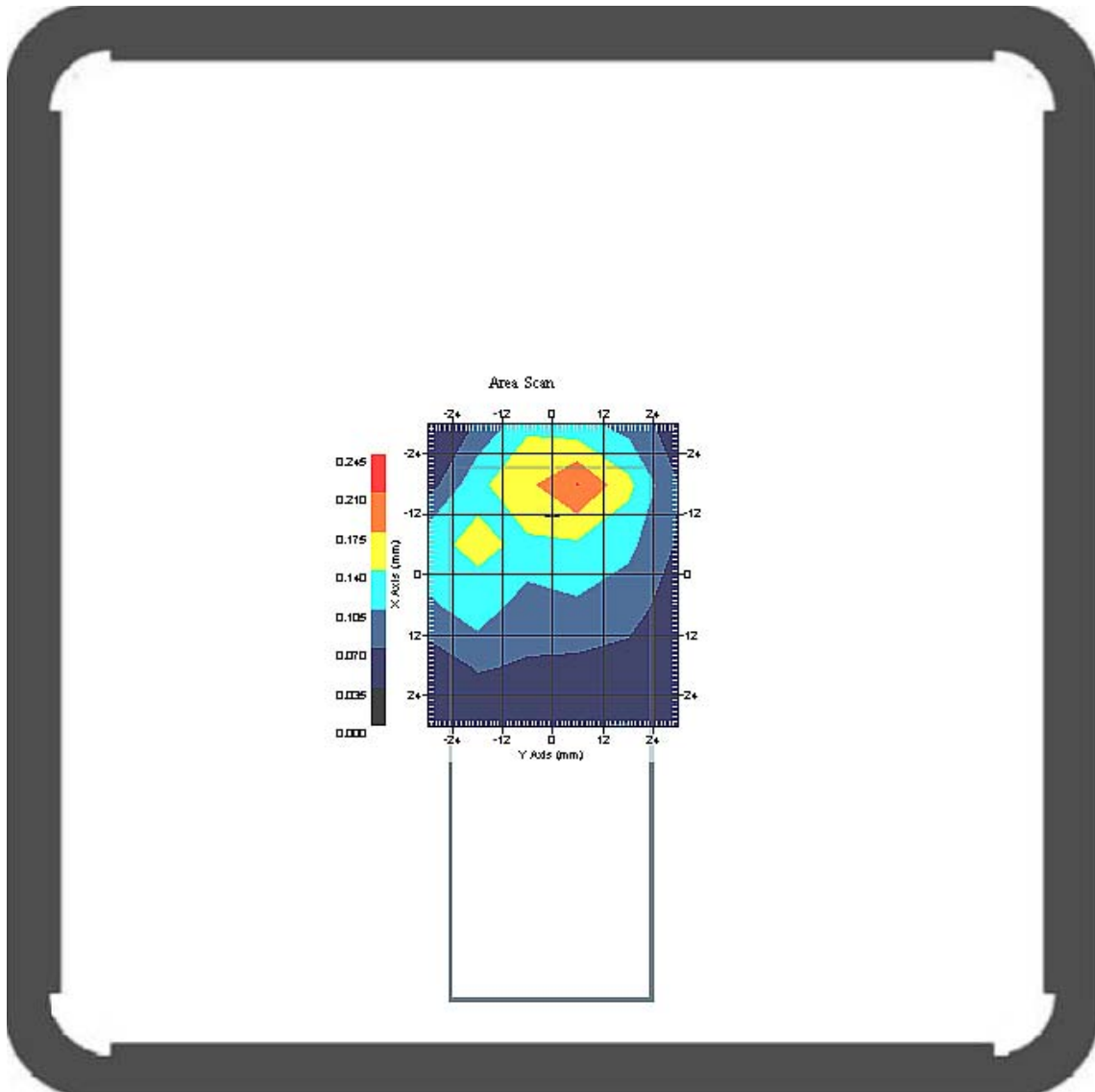
Area Scan



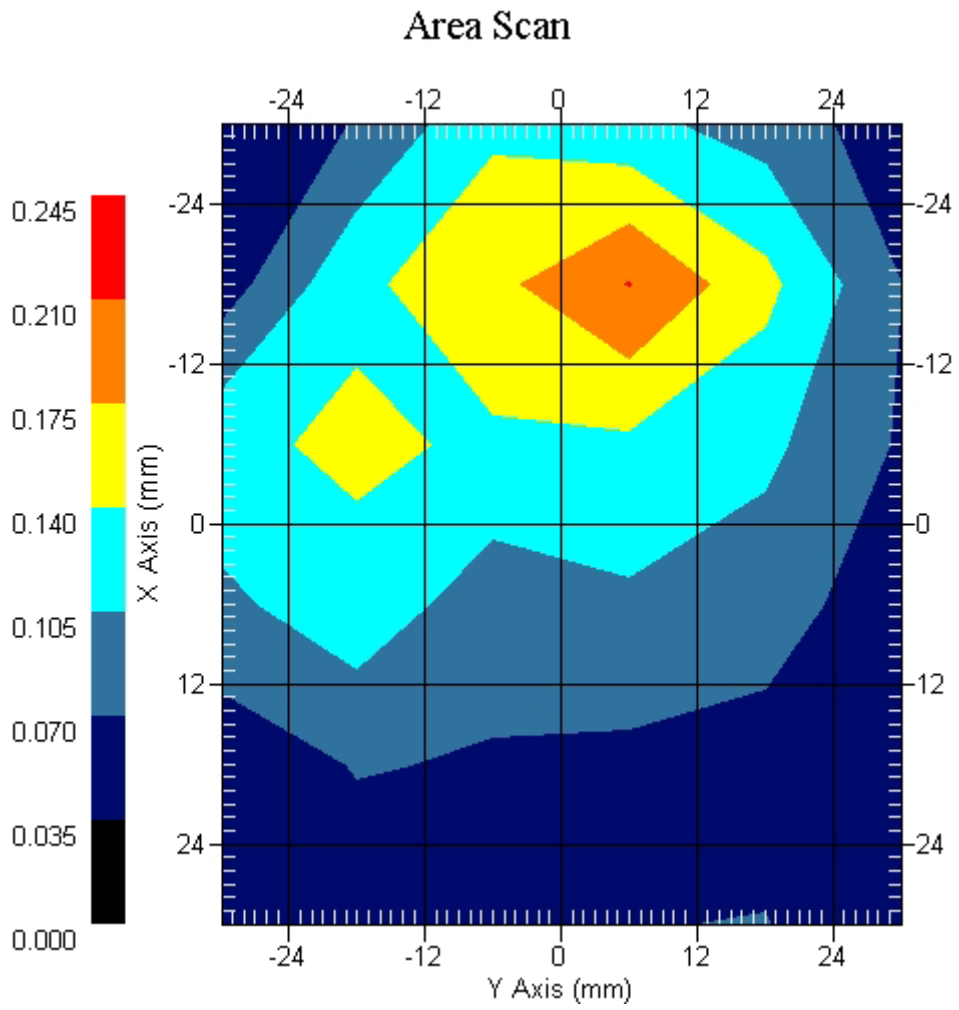
Measurement Data

Crest Factor : 1
Tissue Temp. : 20.30 °C
Ambient Temp. : 23.80 °C
Area Scan : 6x6x1 : Measurement x=12mm, y=12mm, z=4mm
Zoom Scan : 7x7x7 : Measurement x=5mm, y=5mm, z=5mm
Power Drift-Start : 0.148 W/kg
Power Drift-Finish: 0.145 W/kg
Power Drift (%) : -2.230

DUT Position : Touch
Channel : 11



1 gram SAR value : 0.191 W/kg
10 gram SAR value : 0.112 W/kg
Area Scan Peak SAR : 0.211 W/kg
Zoom Scan Peak SAR : 0.390 W/kg



SAR Measurement Data

ALSAS-10U VER 2.3.2 APREL Laboratories

SAR Test Report- 802.11g

Report Date : 20-Jul-2007
Measurement Date : 20-Jul-2007

Product Data

Device Name : Mobile Phone
Type : Std Form Cell Phone
Model : WIGO 800i
Frequency : 2450.00 MHz
Drift Time : 0 min(s)
Length : 125.3 mm
Width : 49.1 mm
Depth : 21 mm
Antenna Type : Internal

Phantom Data

Type : SAM-Right
Size (mm) : 280 x 280 x 280
Location : Right

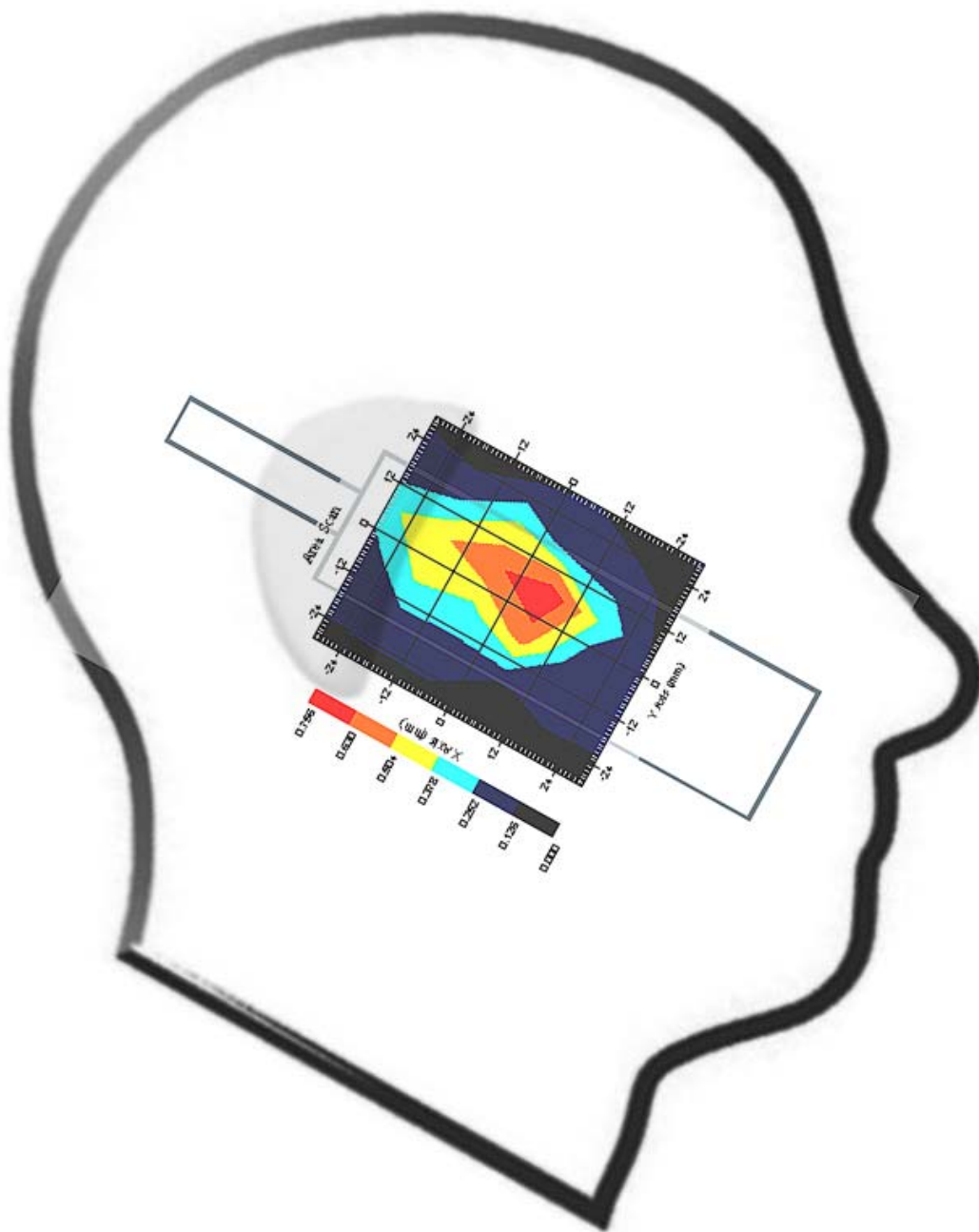
Tissue Data

Type : HEAD
Serial No. : 325-H
Frequency : 2450.00 MHz
Last Calib. Date : 20-Jul-2007
Temperature : 23.60 °C
Ambient Temp. : 24.20 °C
Humidity : 46.00 RH%
Epsilon : 40.22 F/m
Sigma : 1.793 S/m
Density : 1000.00 kg/cu. m

Probe Data

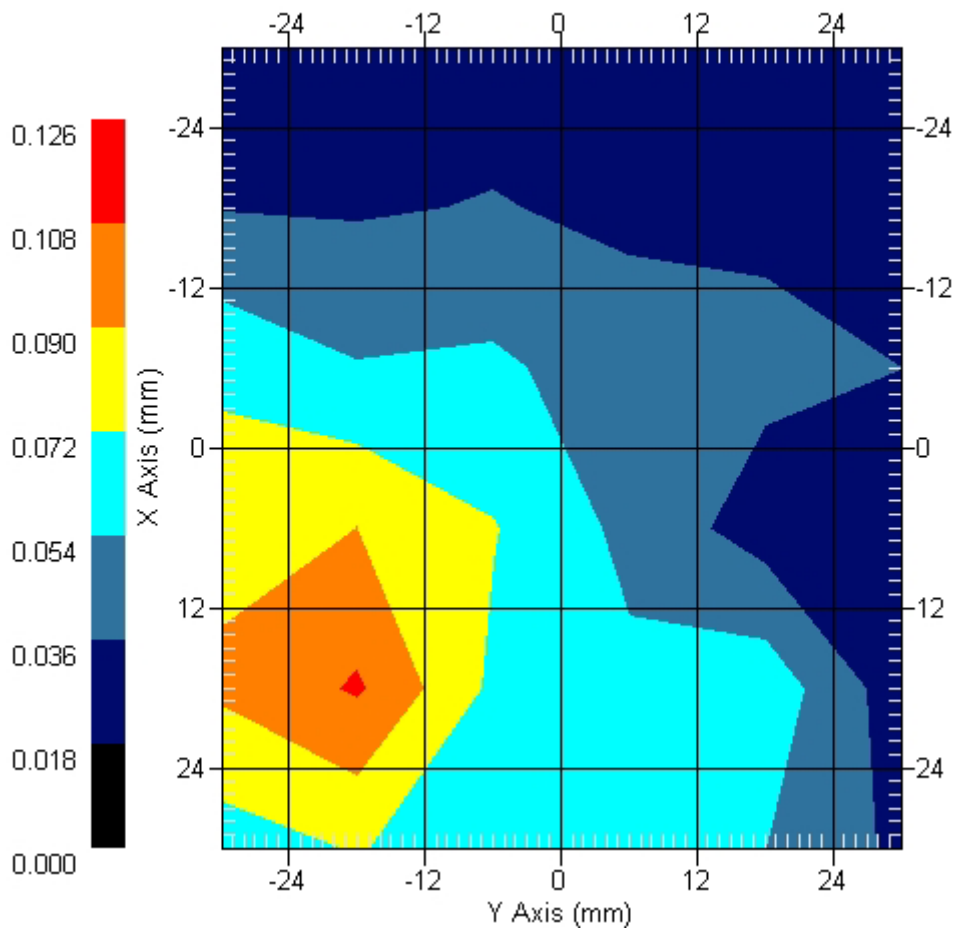
Name : Probe 261
Model : E020
Type : E-Field Triangle
Serial No. : 261
Last Calib. Date : 5-Apr-2007
Frequency : 2450.00 MHz
Duty Cycle Factor: 1
Conversion Factor: 4.85
Probe Sensitivity: 1.20 1.20 1.20 $\mu\text{V}/(\text{V}/\text{m})^2$
Compression Point: 95.00 mV
Offset : 1.56 mm

Measurement Data



1 gram SAR value : 0.098 W/kg
10 gram SAR value : 0.063 W/kg
Area Scan Peak SAR : 0.110 W/kg
Zoom Scan Peak SAR : 0.190 W/kg

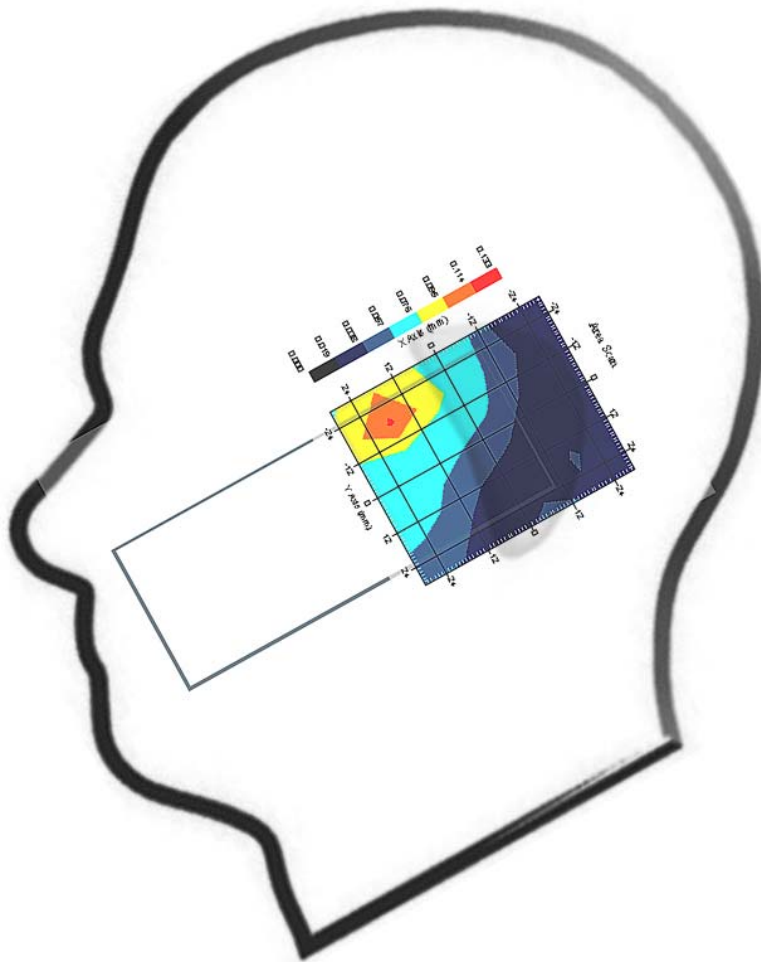
Area Scan



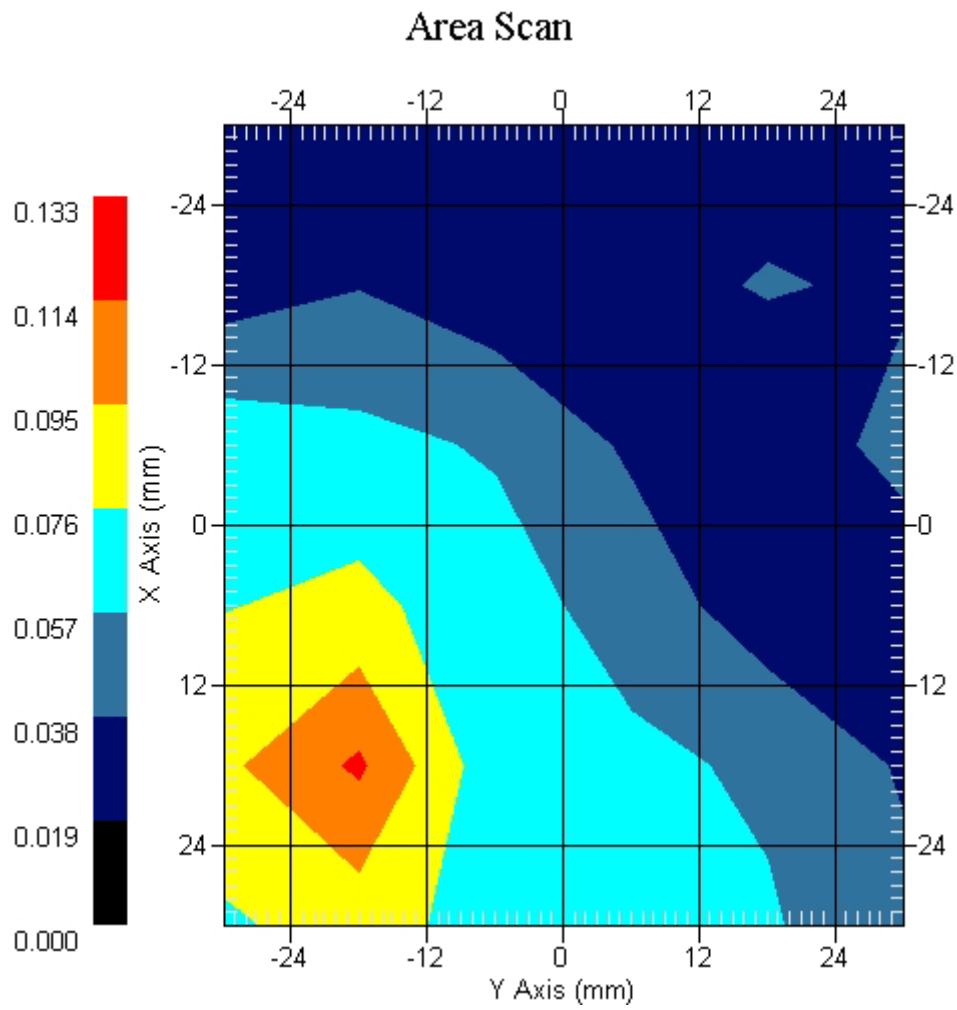
Measurement Data

Crest Factor : 1
 Tissue Temp. : 23.60 °C
 Ambient Temp. : 24.20 °C
 Area Scan : 6x6x1 : Measurement x=12mm, y=12mm, z=4mm
 Zoom Scan : 7x7x7 : Measurement x=5mm, y=5mm, z=5mm
 Power Drift-Start : 0.064 W/kg
 Power Drift-Finish: 0.061 W/kg
 Power Drift (%) : -3.867

DUT Position : Touch
 Channel : 6



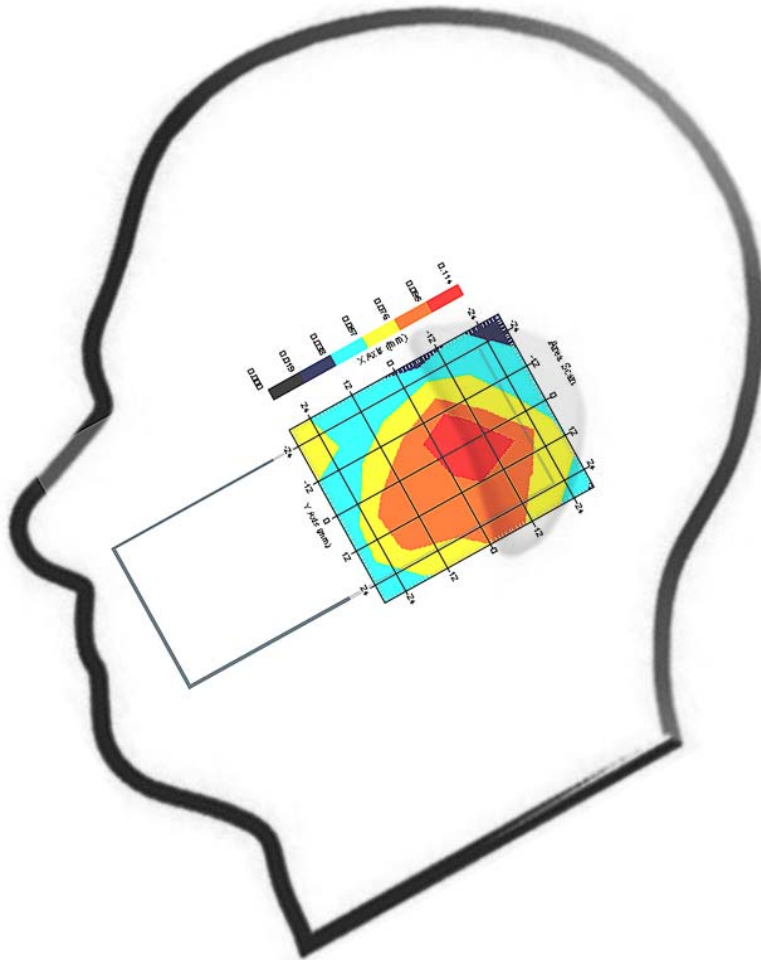
1 gram SAR value : 0.107 W/kg
 10 gram SAR value : 0.067 W/kg
 Area Scan Peak SAR : 0.117 W/kg
 Zoom Scan Peak SAR : 0.210 W/kg



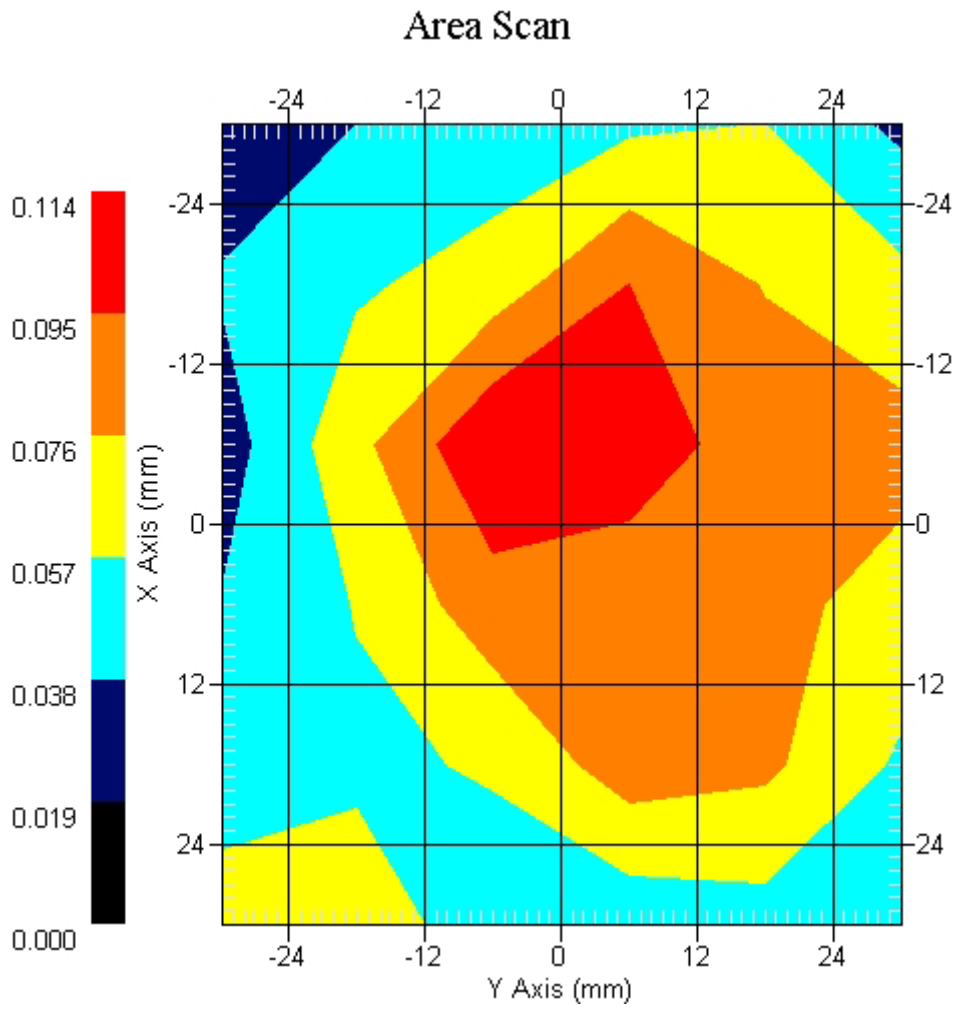
Measurement Data

Crest Factor : 1
Tissue Temp. : 23.60 °C
Ambient Temp. : 24.20 °C
Area Scan : 6x6x1 : Measurement x=12mm, y=12mm, z=4mm
Zoom Scan : 7x7x7 : Measurement x=5mm, y=5mm, z=5mm
Power Drift-Start : 0.078 W/kg
Power Drift-Finish: 0.080 W/kg
Power Drift (%) : 2.533

DUT Position : Touch
Channel : 11



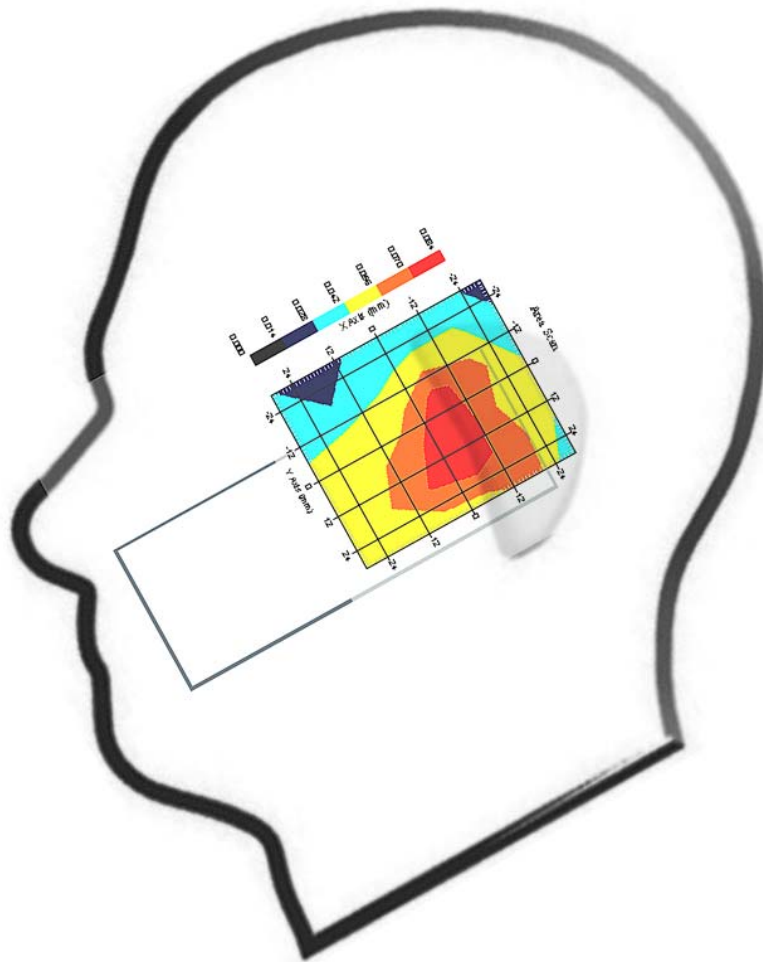
1 gram SAR value : 0.100 W/kg
10 gram SAR value : 0.063 W/kg
Area Scan Peak SAR : 0.112 W/kg
Zoom Scan Peak SAR : 0.170 W/kg



Measurement Data

Crest Factor : 1
Tissue Temp. : 23.60 °C
Ambient Temp. : 24.20 °C
Area Scan : 6x6x1 : Measurement x=12mm, y=12mm, z=4mm
Zoom Scan : 7x7x7 : Measurement x=5mm, y=5mm, z=5mm
Power Drift-Start : 0.076 W/kg
Power Drift-Finish: 0.074 W/kg
Power Drift (%) : -2.641

DUT Position : 15° Tilt
Channel : 1



1 gram SAR value : 0.081 W/kg
10 gram SAR value : 0.059 W/kg
Area Scan Peak SAR : 0.084 W/kg
Zoom Scan Peak SAR : 0.120 W/kg