



# ATW330-4X

## Wireless Coordinator

### User's Manual



v.1.0  
Apr. 2022

## **Important Announcement**

The information contained in this document is the property of Atop Technologies, Inc., and is supplied for the sole purpose of operation and maintenance of Atop Technologies, Inc. products. No part of this publication is to be used for any other purposes, and it is not to be reproduced, copied, disclosed, transmitted, stored in a retrieval system, or translated into any human or computer language, in any form, by any means, in whole or in part, without the prior explicit written consent of Atop Technologies, Inc., offenders will be liable for damages. All rights, including rights created by patent grant or registration of a utility model or design, are reserved.

## **Disclaimer**

We have checked the contents of this manual for agreement with the hardware and software described. Since deviations cannot be precluded entirely, we cannot guarantee full agreement. However, the data in this manual is reviewed regularly and any necessary corrections included in subsequent editions. Suggestions for improvement are welcome. All other product names referenced herein are registered trademarks of their respective companies.

## **Published by**

### **Atop Technologies, Inc.**

2F, No. 146, Sec. 1, Tung-Hsing Rd.

Jubei, Hsinchu 30261

Taiwan, R.O.C.

Tel: 886-3-5508137

Fax: 886-3-5508131

[www.atop.com.tw](http://www.atop.com.tw)

Copyright © 2017 Atop Technologies, Inc. All rights reserved. Technical data is subject to change. All other product names referenced herein are registered trademarks of their own respective companies.

# 1 Preface

---

## **Purpose of the Manual**

This manual supports you during the installation and configuring of the ATW330-4X, as well as it explains some technical options available with the mentioned product.

## **Who Should Use This User Manual**

This manual is to be used by qualified personnel or support technicians who are familiar with operations; This manual also provides helpful and handy information for first time users. For any related problems please contact your local distributor, should they be unable to assist you, please redirect your inquiries via [www.atop.com.tw](http://www.atop.com.tw)

## **Warranty Period**

We provide a **1 year limited warranty**.

## **Federal Communication Commission Interference Statement**

This device complies with Part 15 of the FCC Rules. Operation is subject to the following two conditions: (1) This device may not cause harmful interference, and (2) this device must accept any interference received, including interference that may cause undesired operation.

This equipment has been tested and found to comply with the limits for a Class B digital device, pursuant to Part 15 of the FCC Rules. These limits are designed to provide reasonable protection against harmful interference in a residential installation. This equipment generates, uses and can radiate radio frequency energy and, if not installed and used in accordance with the instructions, may cause harmful interference to radio communications. However, there is no guarantee that interference will not occur in a particular installation. If this equipment does cause harmful interference to radio or television reception, which can be determined by turning the equipment off and on, the user is encouraged to try to correct the interference by one of the following measures:

- Reorient or relocate the receiving antenna.
- Increase the separation between the equipment and receiver.
- Connect the equipment into an outlet on a circuit different from that to which the receiver is connected.
- Consult the dealer or an experienced radio/TV technician for help.

FCC Caution: Any changes or modifications not expressly approved by the party responsible for compliance could void the user's authority to operate this equipment.

## FOR MOBILE DEVICE USAGE (>20cm/low power eg. AP routers)

### Radiation Exposure Statement:

This equipment complies with FCC radiation exposure limits set forth for an uncontrolled environment. This equipment should be installed and operated with minimum distance 20cm between the radiator & your body.

## Caution

Beginning from here there will be extreme caution exercised.

---



Never install or work on electrical cabling during periods of lightning activity. Never connect or disconnect power when hazardous gases are present



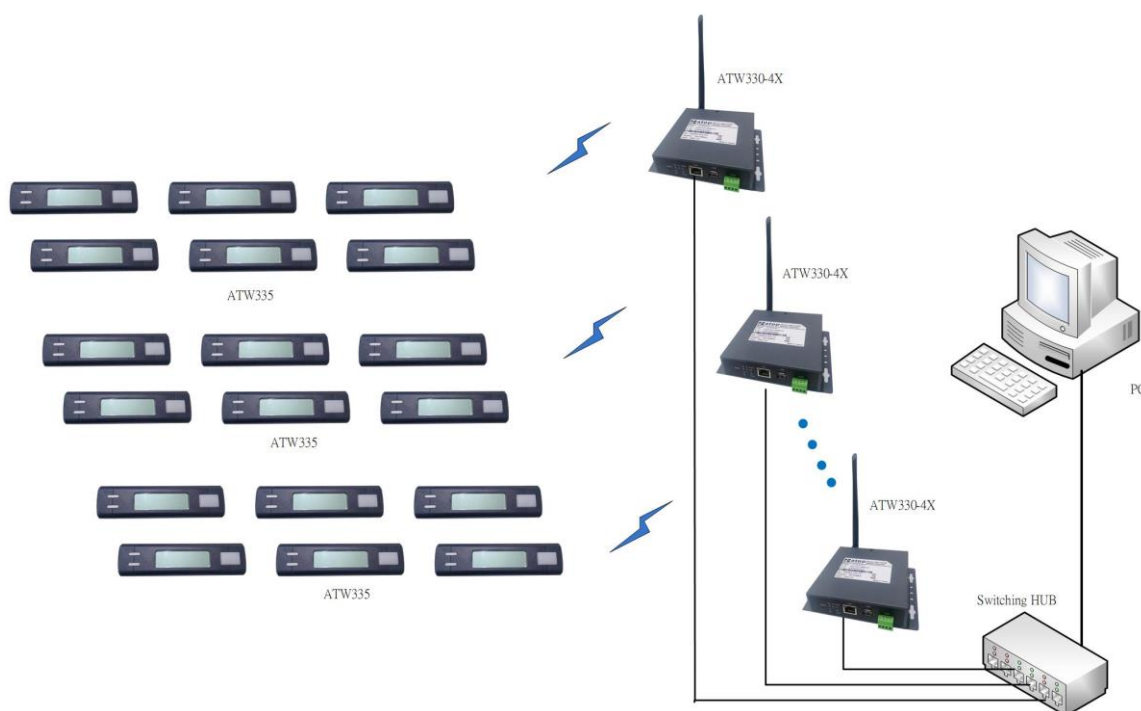
**WARNING:** Disconnect the power and allow to cool 5 minutes before touching.

## 2 Introduction

---

### 2.1 Product Overview

Wireless coordinator is a data transmission medium between picking control PC and all the picking devices. Which is Ethernet architecture product, following up the standard TCP/IP communication protocol to communicate with the host PC.



## 3 Getting Started

---

### 3.1 Inside the Package

Inside the product purchased you will find the following items:

Table 3.1

Item	Quantity	Description
ATW330-41or ATW330-42	1	Wireless coordinator (STD or PoE)
Antenna	1	ANTENNA
Antenna	1	MAGNETIC BASE ANTENNA(Optional)
Adapter	1	12 VDC, 1 A
Documentation	1	User's Manual
Self-tapping screws	4	M4 * 16mm, button Phillips

---

**Note:** Please notify your sales representative if any of the above items is missing or damaged in any form upon delivery. If your sales representative is unable to satisfy your enquiries, please contact us directly.

---

## 3.2 Front & Power Panels

The Front (Figure 3.1), and Power panels (Figure 3.2), are as follow:



Figure 3.1



Figure 3.2



### 3.3 First Time Installation

Before installing the device, please adhere to all safety procedures described below, Atop will not be held liable for any damages to property or personal injuries resulting from the installation or overall use of the device. **Do not attempt to manipulate the product in any way if unsure of the steps described here, in such cases please contact your dealer immediately.**

- Prepare the necessary cables, DC adapter, power cord, LAN cable, etc.: do not connect the unit yet.
- Install the antenna to the SMA connectors.
- Proceed then to plug the power source to the unit, starting from the ground and then the terminal block.
- Place the device in the desired location and connect it to the LAN via an Ethernet cable with a RJ45 connector.
- Connect your computer to the LAN network. Default configurations will be addressed later on Sections.

---

**Note:** remember to please consult your Hardware Installation Guide when attempting an installation. Also, please follow all safe procedures when doing so.

---

## 3.4 System Setup

The following section describes some critical settings for the ATW330-41.

### 3.4.1 PC IP address

View PC Host IP Location This example is 10.3.44.1 Figure 3.3

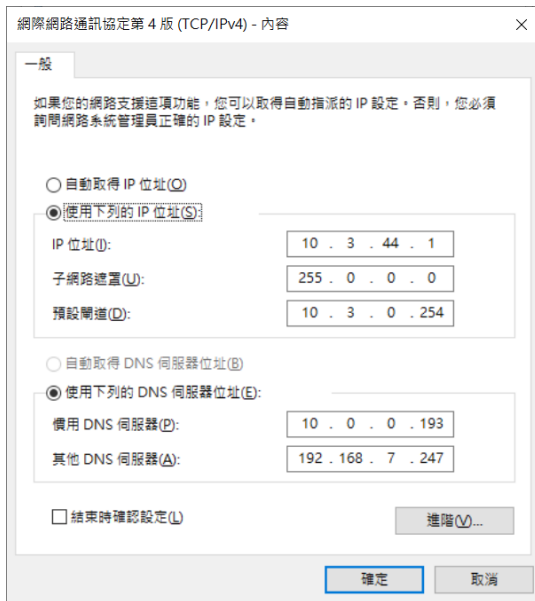


Figure 3.3

### 3.4.2 Set up PC IP

Use "System controller\wptl\_sys.exe" Figure 3.4

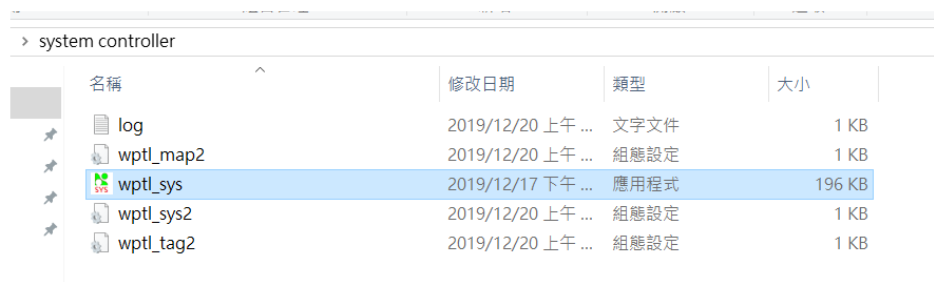


Figure 3.4

Enter the setting screen Figure 3.5

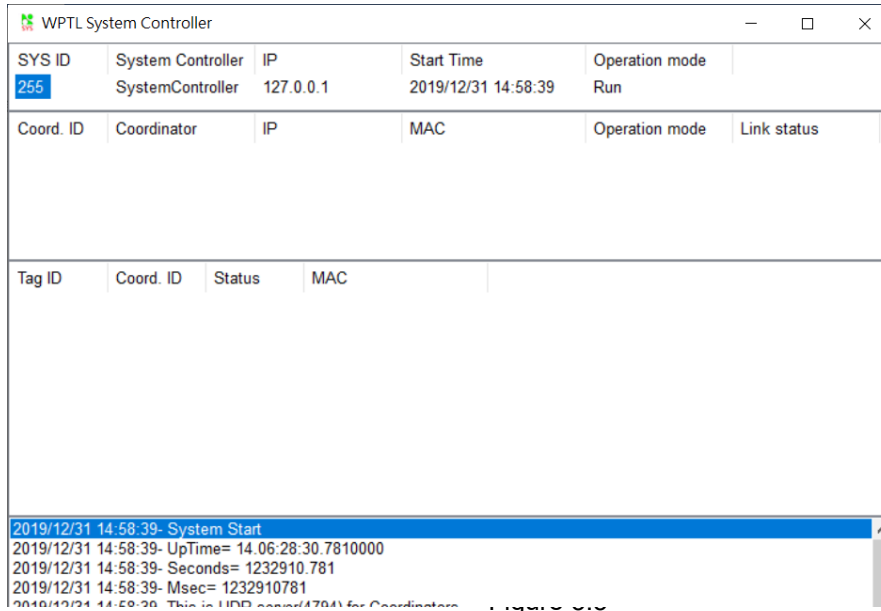


Figure 3.5

Click the “SYS ID”

Enter the setting screen Figure 3.6

“Working IP” Field is set to:10.3.44.1.

Click Update to complete the setting

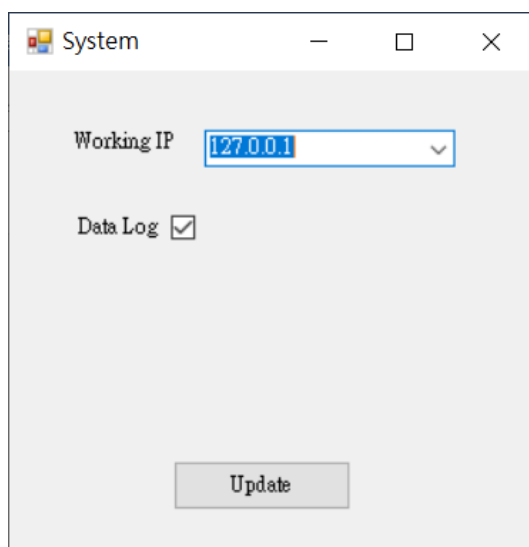
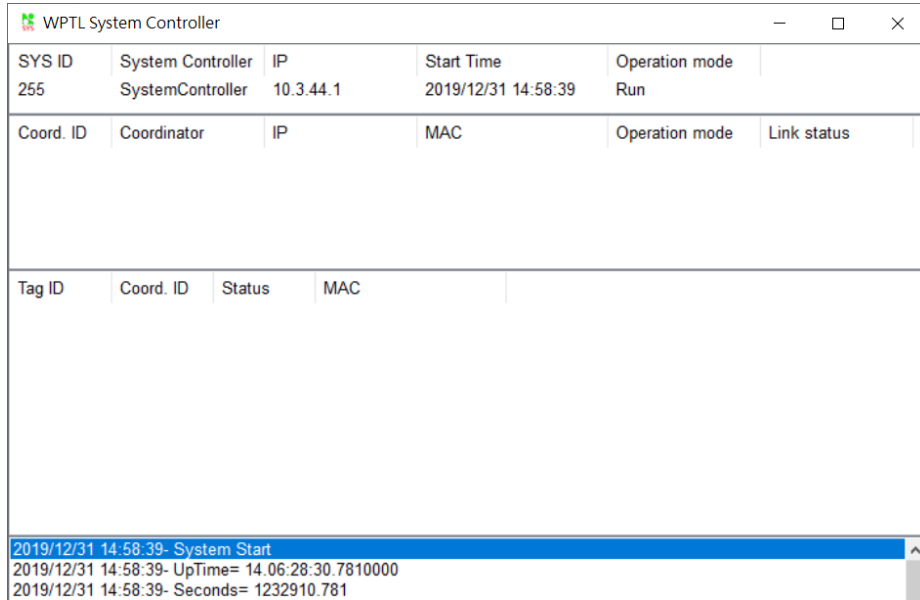


Figure 3.6

System Controller "10. 3. 44. 1" Figure 3.7



The screenshot shows a window titled "WPTL System Controller" with a table of system and coordinator information. The table has three main sections: System Controller details, Coordinator details, and Tag ID details. A log window at the bottom shows system start and uptime information.

SYS ID	System Controller	IP	Start Time	Operation mode	
255	SystemController	10.3.44.1	2019/12/31 14:58:39	Run	

Coord. ID	Coordinator	IP	MAC	Operation mode	Link status
-----------	-------------	----	-----	----------------	-------------

Tag ID	Coord. ID	Status	MAC
--------	-----------	--------	-----

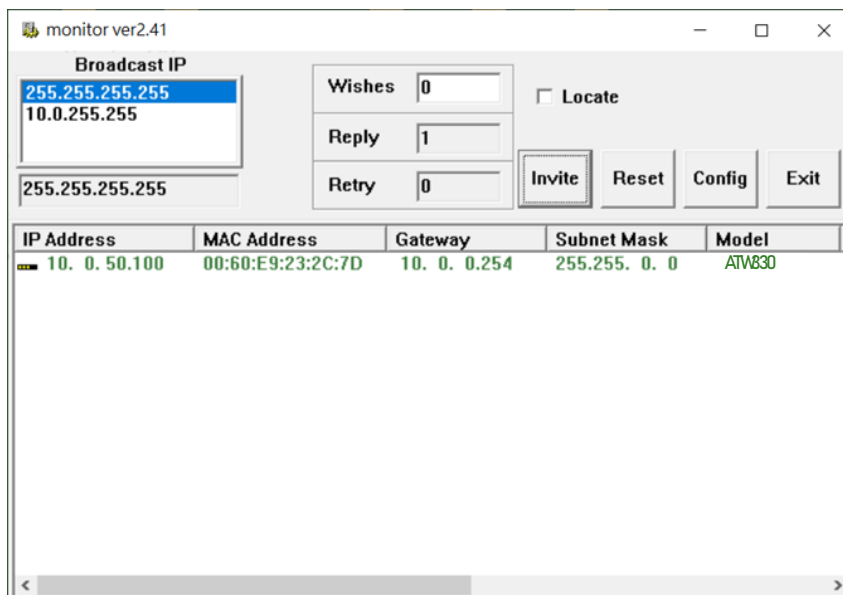
2019/12/31 14:58:39- System Start  
2019/12/31 14:58:39- UpTime= 14.06:28:30.7810000  
2019/12/31 14:58:39- Seconds= 1232910.781

Figure 3.7

### 3.4.3 Set up Wireless coordinator IP Address

Use Manager. Click "Invite" then View Wireless coordinator IP Figure 3.8.

Wireless coordinator IP Address default IP 10.0.50.100



The screenshot shows a window titled "monitor ver2.41" with configuration options for wireless coordinators. It includes input fields for "Wishes", "Reply", and "Retry", a "Locate" checkbox, and buttons for "Invite", "Reset", "Config", and "Exit". Below these is a table with columns for IP Address, MAC Address, Gateway, Subnet Mask, and Model.

IP Address	MAC Address	Gateway	Subnet Mask	Model
10. 0. 50.100	00:60:E9:23:2C:7D	10. 0. 0.254	255.255. 0. 0	ATW830

Figure 3.8

Click on the IP Address field and the ” **Config** “option. Figure 3.9

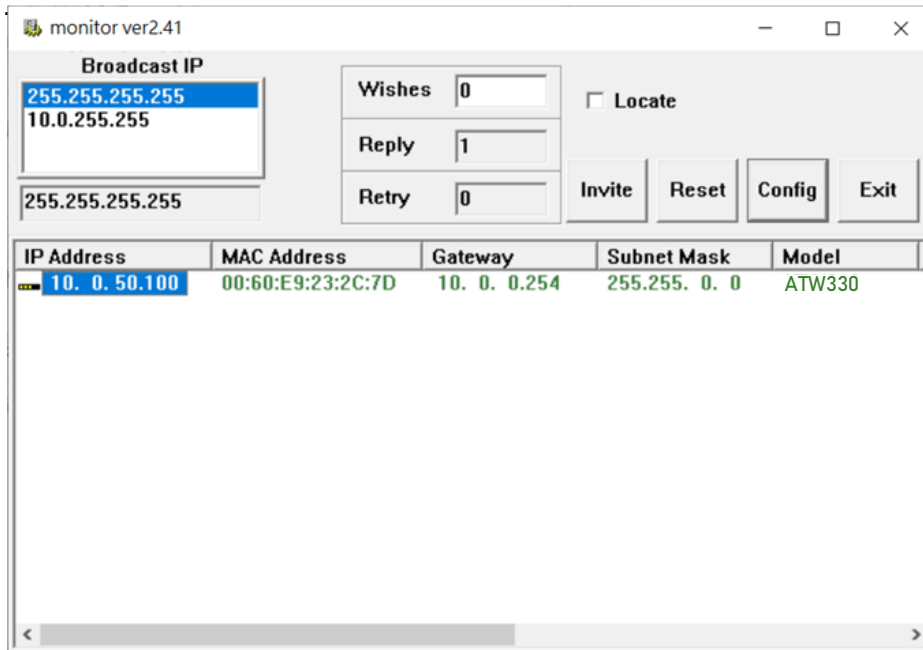


Figure 3.9

Enter the dialog screen .Figure 3.10

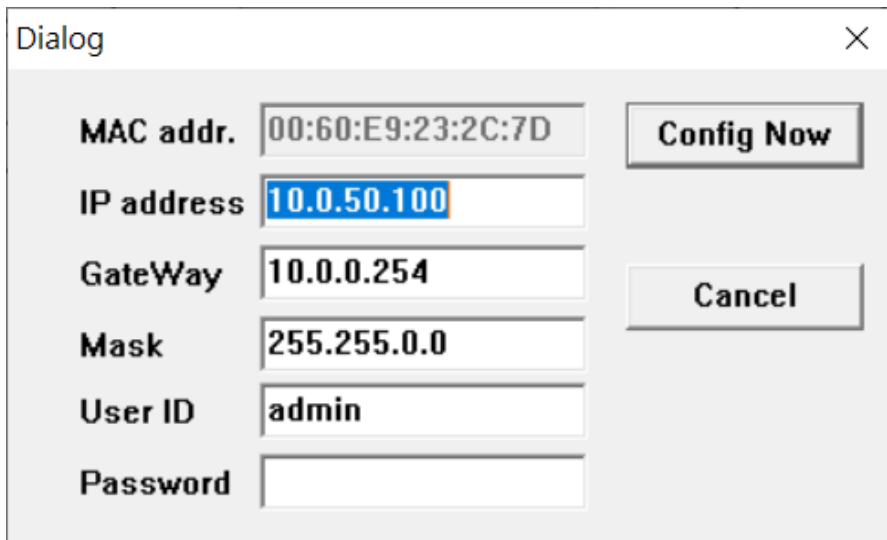


Figure 3.10

Modify the IP address / gateway to the same network as the PC. Figure 3.11

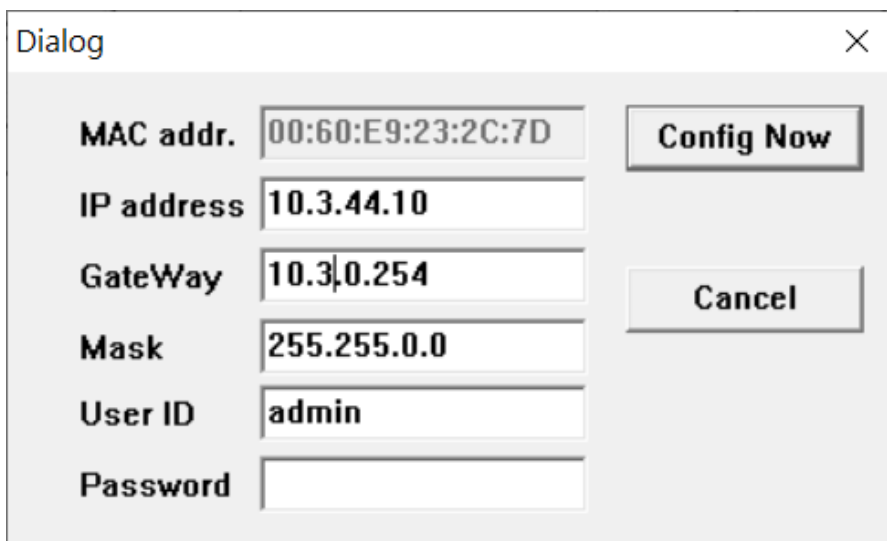


Figure 3.11

Click “**Config Now**” to complete the setting, and the wireless coordinator will restart..

Click “**Invite**” to confirm the IP address to complete the modification. Figure 3.12

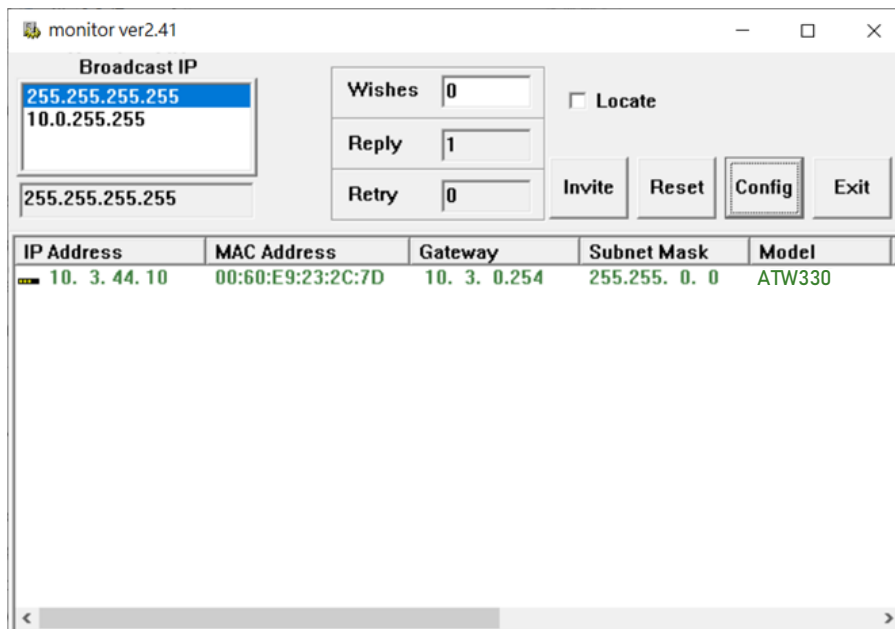


Figure 3.12

Click “**Exit**” exit Monitor.

### 3.4.4 Wireless coordinator joins system

Use Config tool.\WPTLConfig\_v.095. Figure 3.13

名稱	日期	類型	大小	標籤
lib	2019/12/20 上午 09:45	檔案資料夾		
atop_pic1	2018/8/13 上午 10:11	BMP 檔案	17 KB	
config	2018/8/13 上午 10:11	GIF 檔案	1 KB	
gnome-fs-network	2018/8/13 上午 10:11	GIF 檔案	2 KB	
icon1	2018/8/13 上午 10:11	圖示	1 KB	
nsel	2018/8/13 上午 10:11	GIF 檔案	1 KB	
rnsel	2018/8/13 上午 10:11	GIF 檔案	1 KB	
rsel	2018/8/13 上午 10:11	GIF 檔案	1 KB	
sel	2018/8/13 上午 10:11	GIF 檔案	1 KB	
WPTL_Configurati...	2019/5/7 下午 02:48	CONFIG 檔案	2 KB	
WPTLConfig_v.095	2019/10/21 下午 04:58	應用程式	544 KB	

Figure 3.13

Enter the setting screen Figure3.14

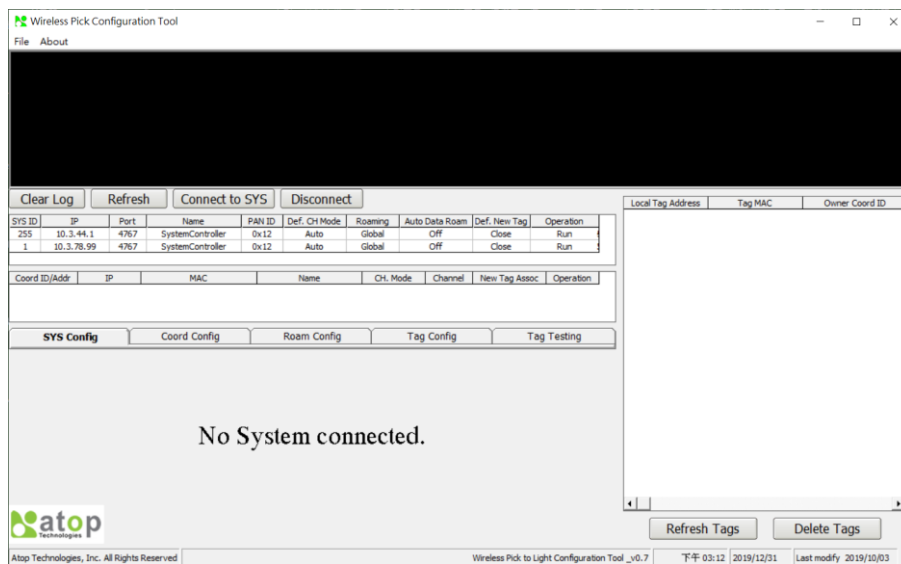


Figure 3.14

# Atop Wireless coordinator

## ATW330-4X

### User Manual V. 1.0

Click the field to connect the PC. Figure 3.15

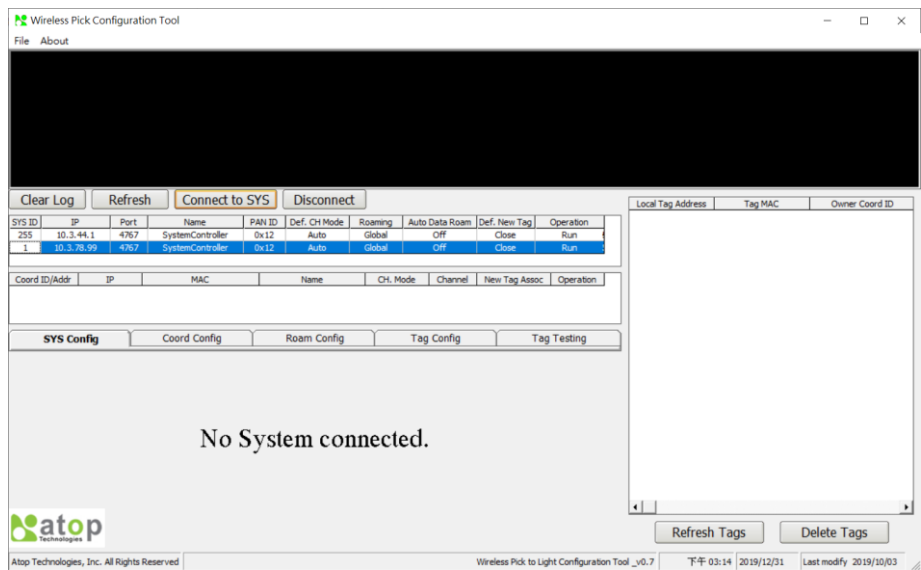


Figure 3.15

Click "connect to sys" connect PC. Figure 3.16

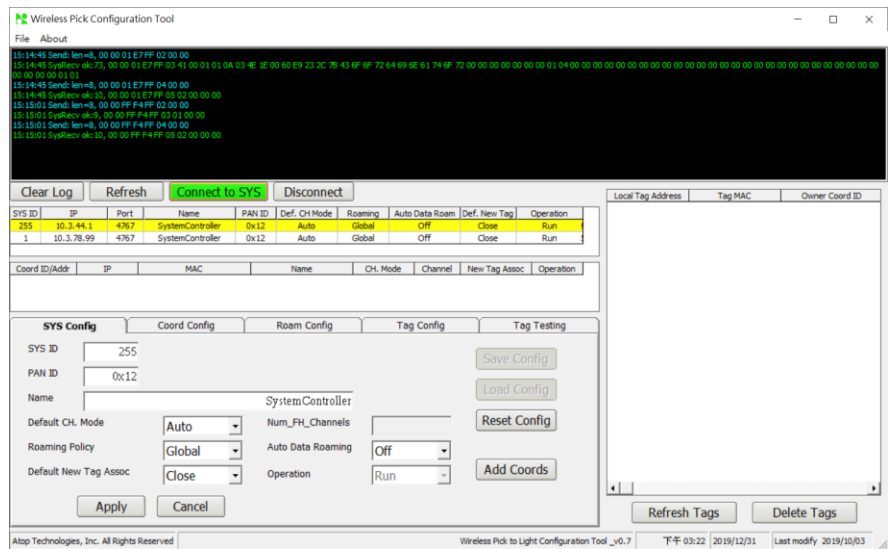


Figure 3.16



### Check “SYS ID”

SYS ID field is 1 Figure 3.16

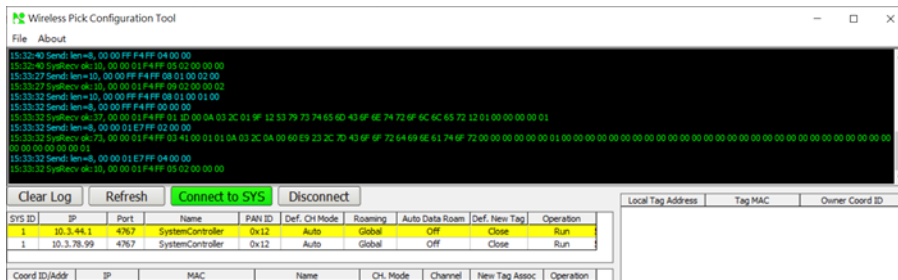


Figure 3.16

Click” **Add coords**” connect Wireless coordinator. Figure 3.17

The Wireless coordinator now makes a "Beep" sound.

Click “**ok**” Confirm the connection.

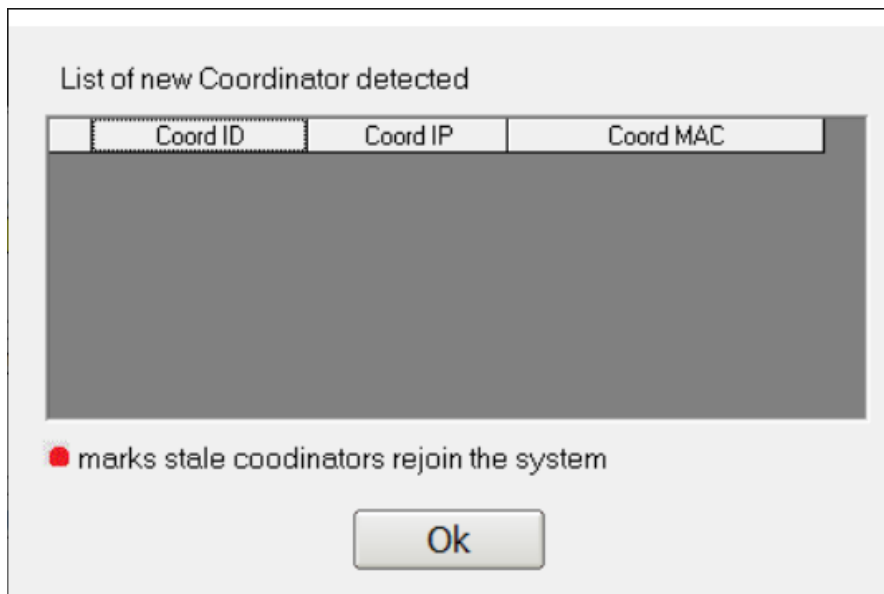


Figure 3.17

Wireless coordinator connection completed. Figure 3.18

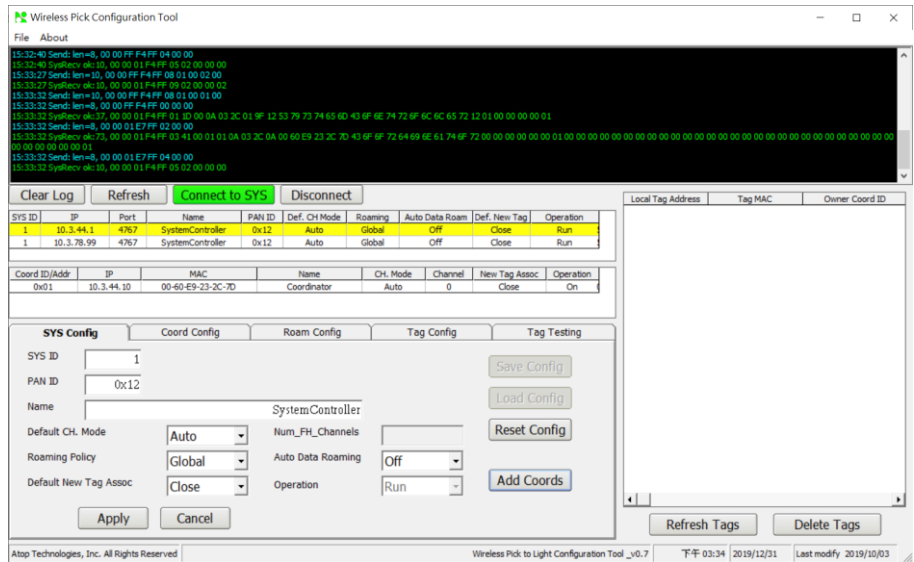


Figure 3.18

### 3.4.5 Connect Wireless Pick To Light

Click "Coord ID/Addr". Figure 3.19

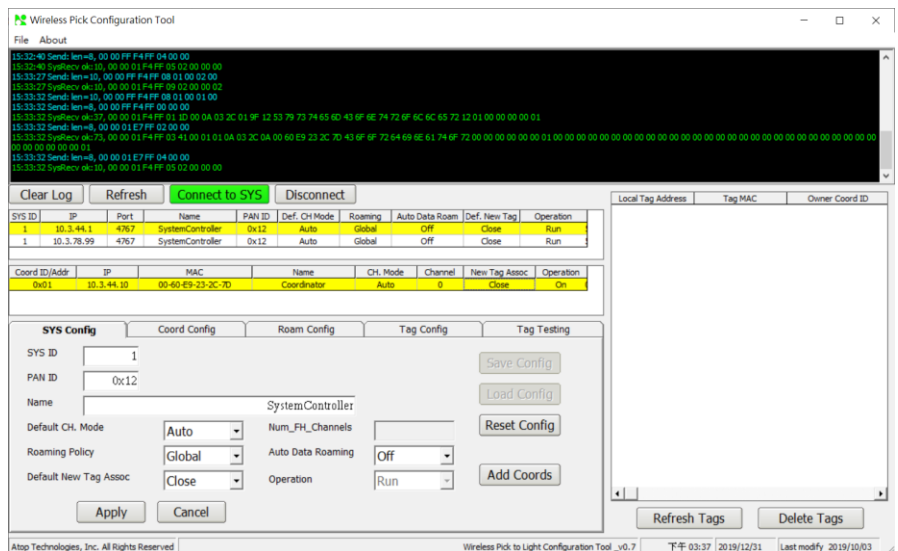


Figure 3.19

# Atop Wireless coordinator

## ATW330-4X

### User Manual V. 1.0

Click “Coord config”. Figure 3.20

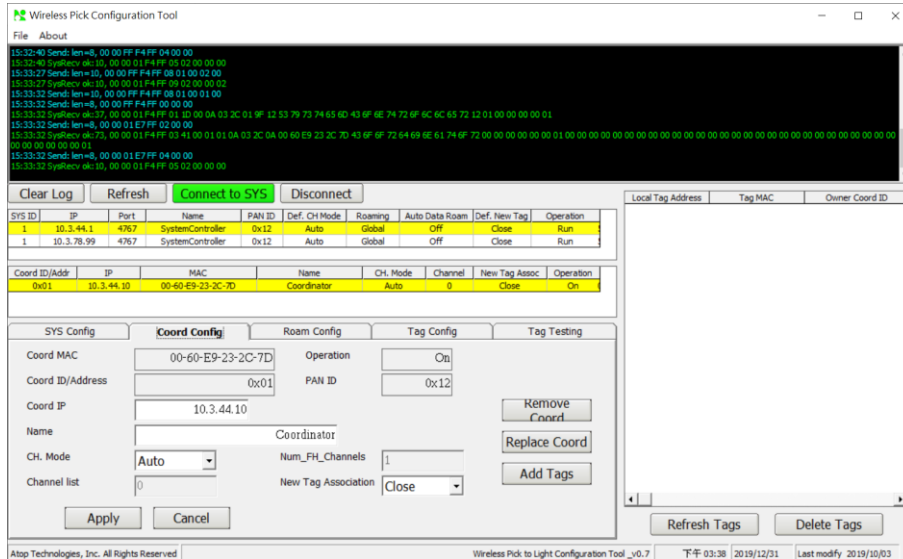


Figure 3.20

Set up Wireless Pick To Light channel.

**CH.Mode** field options”FIX”

**Channel List** field Select a Wireless Pick To Light channel Default channel 1 this example is 8.

**New Tag Association** field options”open”

Click “APPLY” Figure 3.21

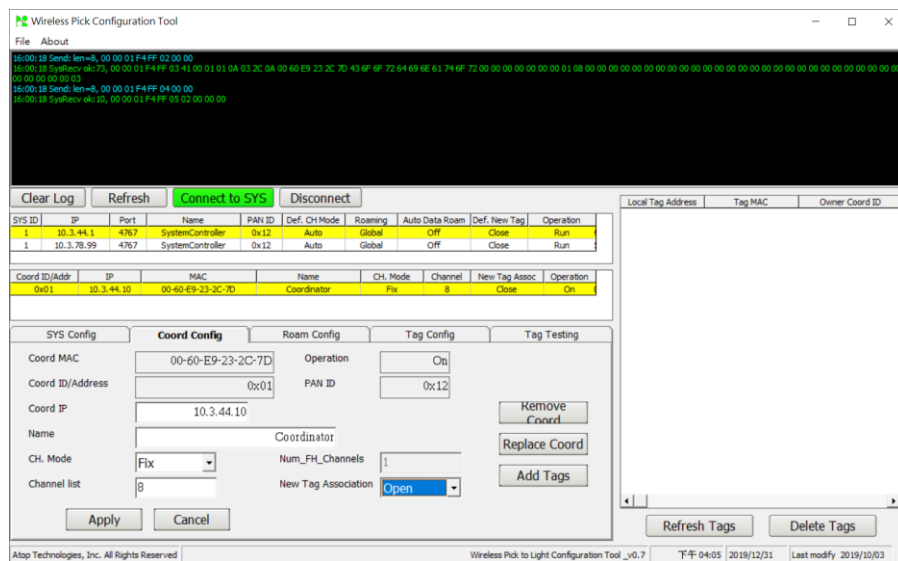


Figure 3.21

Click **“Add Tags”** enter List of new Tag detected screen Figure 3.22

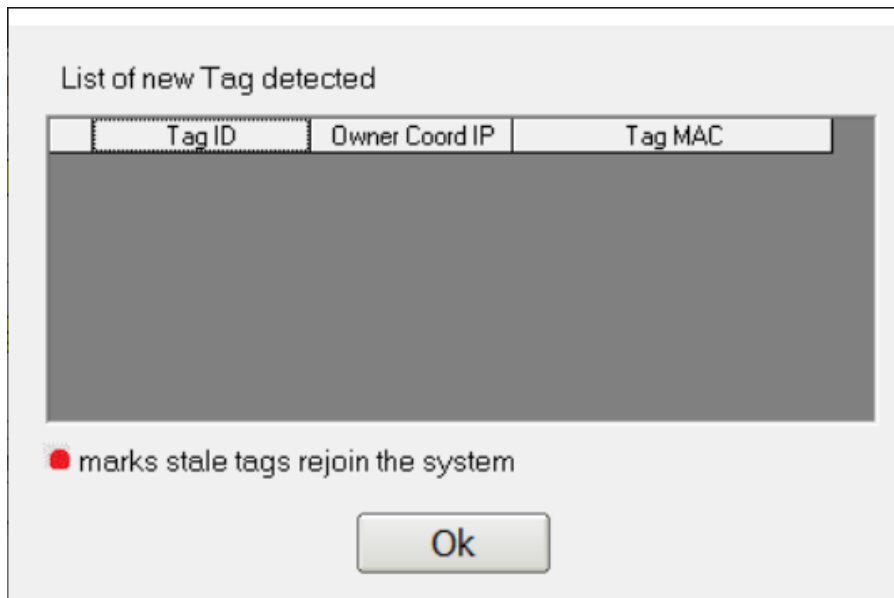


Figure 3.22

Start setting Wireless Pick To Light ID address.

Before setting, you must confirm that the tag displays **PEND** before setting. Figure 3.23



Figure 3.23

Setting Wireless Pick To Light ID address. Figure 3.24

Step1. Press and hold the B key.

Step2. Press and hold the A key. (about 1s).

Step3. Release the A key.

Step4. Press C key to complete ID Address setting.



Figure 3.24

If TAG does not show PEND status, please follow the steps below. Figure 3.25



Figure 3.25.

Step1. Press and hold the A key.

Step2. Single-click the C key. The LCD will display **TSTAG**.

Step3. Release the A key.

Step4. Single-click the B key. The LCD will display **DEFLT**.

Step5. Single-click the C key. The LCD will Final display **PEND**.

Click “OK”. Complete the Wireless Pick To Light ID Address setting. The screen will display Tag ID related information as shown below. Figure 3.26 & 3.27

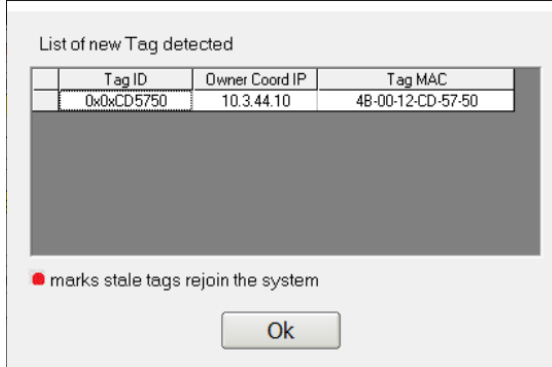


Figure 3.26

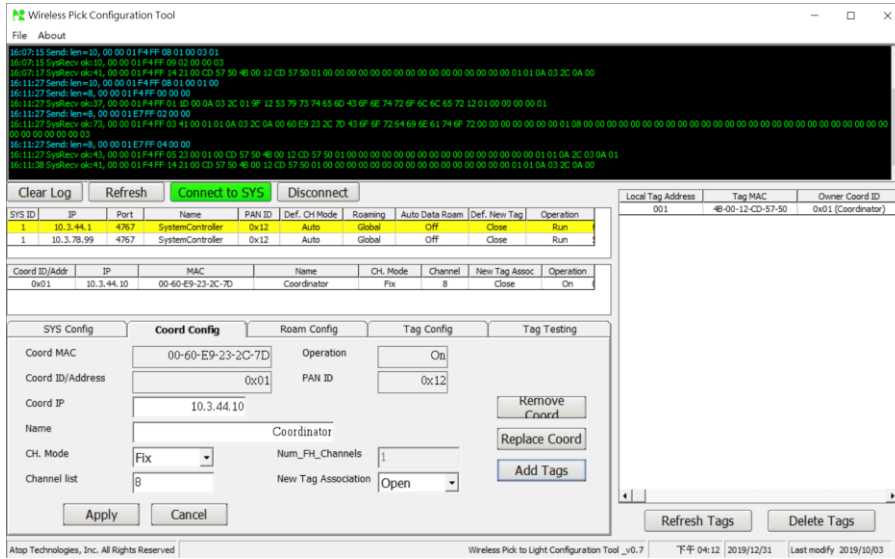


Figure 3.27

## 4 Specifications

### 4.1 Hardware Specifications

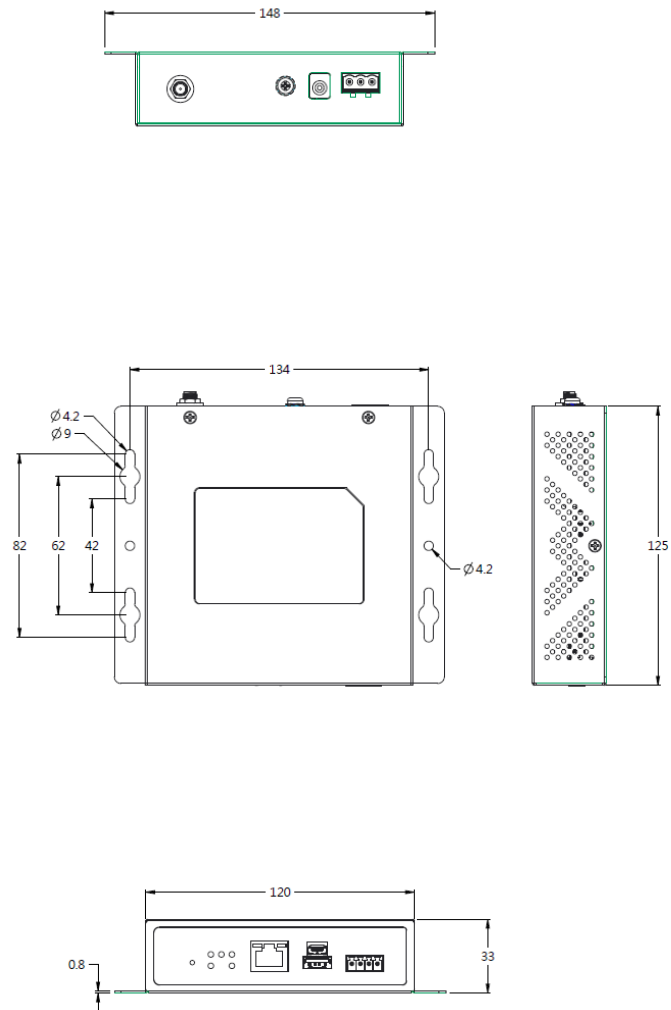
Table 4.1

Item	Description
CPU	32bit ARM 1GHz CPU
Flash Memory	32Mbytes
RAM Memory	128Mbytes
EEPROM	64Kbits
Wireless Radio Bands	<p>Band Frequency: 2402- 2480MHz</p> <p>Frequency Channels are selectable by menu control.</p> <p>Transmit Power: Up to 8dBm + 5dBi antenna. (Power: 5dBm+5dBi antenna in European regulations.)</p> <p>Receive Sensitivity: Up to -92dBm.</p> <p>Data Rate: 2Mbps</p> <p>Extend Antenna attached.</p> <p>Radiation: Omni-Directional.</p> <p>Distance cover range: Indoor 25 M</p>
LAN	<p>IEEE 802.3 Standards</p> <p>Support TCP/UDP Client/Server connection mode.</p> <p>10/100/1000 Base-T/TX RJ-45 Connector.</p> <p>Auto-Negotiation (10/100/1000Mbps, Half/Full Duplex).</p> <p>Auto-Crossover Detection.</p> <p>1.5KV Magnetic Isolation Protection</p>
USB Port	<p>USB2.0 I/F model, Provide +5VDC,0.5A.</p> <p>Support Storage Device EXT3, 32GB.</p> <p>Connector Type-A w/Lock</p>

Item	Description
COM	Extend RS-485 port (Reserved). Proprietary protocol. Connector: Terminal Block/Male/5.08mm pitch/4pins. Pin Assign: NC/D+/D-/G
LED indication	PWR: Power Indicator x 1 RUN: System Status Indicator x 1 Tx/Rx: Between Host & Device Communication x 2. RF: Wireless status Indicator x 1. LAN Indicator: Link & Speed Indicator x 2.
Reset/Default	Reset: Hold 3sec to Reboot device. Default: 6sec Reset to Factory Default & reboot.
Buzzer	Build in Buzzer beeper.
Power Requirement	Input: Voltage: DC +12VDC +/- 10% Max. Current: 1.0A max. @ 12VDC. Connector Type: 1. DC-JACK (Inner V+, 2.1mm). 2. Terminal block (V+/V-/F.G.; Pitch:5.08mm /3pins/Male). Case Shielding Ground: M4 + Screwing. PoE IEEE802.af PD (optional for ATW330-42) Protection: 1. Inrush Current Protection. 2. Power Voltage Reverse Protection.
Operation Temperature	Operation: 0 to 50°C (32 to 122°F) Storage: -20 to 60°C (-4 to 140°F)
Ambient Humidity	Operation & Storage: 5 ~ 90% (non-condensing).
Housing	Size: 148mm x 125mm x 33mm ( 5.83 x 4.92 x 1.30 in). Material: Metal Case. Weight: ATW330-41:0.44Kg ATW330-42:0.45Kg



## 4.2 Three View Drawing:



### 4.3 Installation overview

Step 1. Use 4 pcs M4 \* 16mm, button Phillips to fix the product to the wall or beam.

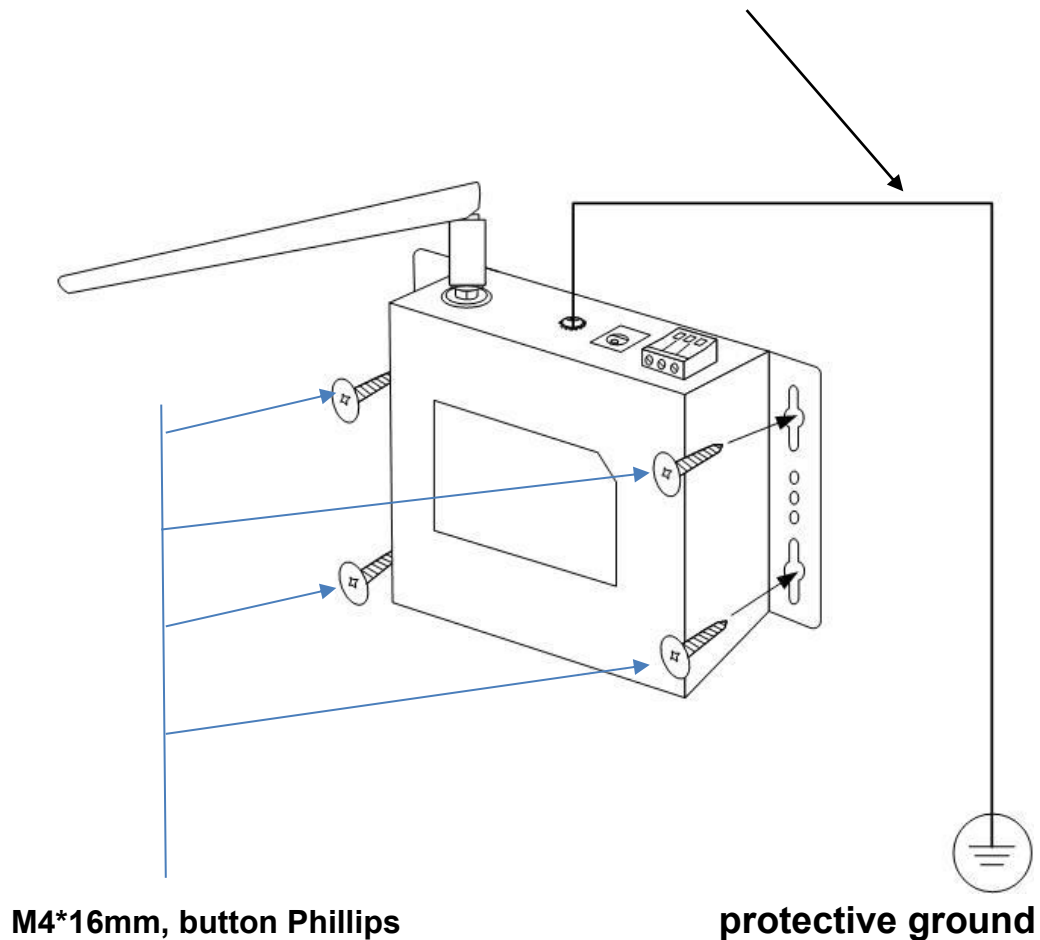
Step 2: Connect one end of the ground wire to the product ground screw and the other end to a protective ground terminal block.

#### **Warning!**

The equipment shall be connect one end of the ground wire to the product ground screw and the other end to a protective ground terminal block.

Step 3. Connect the network cable and power cable.

#### **GROUND WIRE YELLOW/GREEN STRIPE 18AWG**



## 4.4 LED Indicators

Table 4.2

Name	Color	Status	Description
PWR	Green	Steady	The device is power on
RUN	Green	Blinking	The device is running
TX	Green	Blinking	Data is transmitting on Wireless Pick To Light
RX	Green	Blinking	Data is receiving on Wireless Pick To Light
RF	Green	Blinking	The Wireless Communication is running

## 5 Warranty

---

### Limited Warranty Conditions

Products supplied by us are covered in this warranty for undesired performance or defects resulting from shipping, or any other event deemed to be the result of Atop Technologies' mishandling. The warranty does not cover however, equipment which has been damaged due to accident, misuse, abuse, such as:

- Use of incorrect power supply, connectors, or maintenance procedures
- Use of accessories not sanctioned by us
- Improper or insufficient ventilation
- Improper or unauthorized repair
- Replacement with unauthorized parts
- Failure to follow Our operating Instructions
- Fire, flood, "Act of God", or any other contingencies beyond our control.

### RMA and Shipping Reimbursement

- Customers must always obtain an authorized "RMA" number from us before shipping the goods to be repaired.
- When in normal use, a sold product shall be replaced with a new one within 3 months upon purchase. The shipping cost from the customer to us will be reimbursed.
- After 3 months and still within the warranty period, it is up to us whether to replace the unit with a new one; normally, as long as a product is under warranty, all parts and labor are free of charge to the customers.
- After the warranty period, the customer shall cover the cost for parts and labor.
- Three months after purchase, the shipping cost from you to us will not be reimbursed, but the shipping costs from us to the customer will be paid by us.

### Limited Liability

Atop Technologies Inc., shall not be held responsible for any consequential losses from using our products.

### Warranty

Atop Technologies Inc., gives a 1 year max for Wireless coordinator.