



ATW315-3

Wireless Pick To Light

User's Manual



v.1.0
Dec. 2019

Important Announcement

The information contained in this document is the property of Atop Technologies, Inc., and is supplied for the sole purpose of operation and maintenance of Atop Technologies, Inc. products. No part of this publication is to be used for any other purposes, and it is not to be reproduced, copied, disclosed, transmitted, stored in a retrieval system, or translated into any human or computer language, in any form, by any means, in whole or in part, without the prior explicit written consent of Atop Technologies, Inc., offenders will be liable for damages. All rights, including rights created by patent grant or registration of a utility model or design, are reserved.

Disclaimer

We have checked the contents of this manual for agreement with the hardware and software described. Since deviations cannot be precluded entirely, we cannot guarantee full agreement. However, the data in this manual is reviewed regularly and any necessary corrections included in subsequent editions. Suggestions for improvement are welcome. All other product names referenced herein are registered trademarks of their respective companies.

Published by

Atop Technologies, Inc.

2F, No. 146, Sec. 1, Tung-Hsing Rd.

Jubei, Hsinchu 30261

Taiwan, R.O.C.

Tel: 886-3-5508137

Fax: 886-3-5508131

www.atop.com.tw

Copyright © 2017 Atop Technologies, Inc. All rights reserved. Technical data is subject to change. All other product names referenced herein are registered trademarks of their own respective companies.

1 Preface

Purpose of the Manual

This manual supports you during the installation and configuring of the ATW315 , as well as it explains some technical options available with the mentioned product.

Who Should Use This User Manual

This manual is to be used by qualified personnel or support technicians who are familiar with operations; This manual also provides helpful and handy information for first time users. For any related problems please contact your local distributor, should they be unable to assist you, please redirect your inquiries via www.atop.com.tw

Warranty Period

We provide a **1 year limited warranty**.

Manufacturers Federal Communication Commission Declaration of Conformity Statement

Model: ATW315

NOTE: This equipment has been tested and found to comply with the limits for a Class A digital device, pursuant to Part 15 of the FCC Rules. These limits are designed to provide reasonable protection against harmful interference when the equipment is operated in a commercial environment. This equipment generates, uses, and can radiate radio frequency energy and, if not installed and used in accordance with the instruction manual, may cause harmful interference to radio communications. Operation of this equipment in a residential area is likely to cause harmful interference in which case the user will be required to correct the interference at his own expense.

This device complies with Part 15 of the FCC Rules.. Operation is subject to the following two conditions: (1) this device may not cause harmful interference, and (2) this device must accept any interference received, including interference that may cause undesired operation.

This device and its antenna(s) must not be co-located or operating in conjunction with any other antenna or transmitter.

FCC Caution: Any changes or modifications not expressly approved by the party responsible for compliance could void the user's authority to operate this equipment.

FCC Radiation Exposure Statement FCC

This equipment complies with FCC radiation exposure limits set forth for an uncontrolled environment. This equipment should be installed and operated with a minimum distance of 20 cm between the radiator & your body.

2 Getting Started

2.1 Inside the Package

Inside the product purchased you will find the following items:

Table 2.1

Item	Quantity	Description
ATW315	1	Wireless Pick to Light

Note: Please notify your sales representative if any of the above items is missing or damaged in any form upon delivery. If your sales representative is unable to satisfy your enquiries, please contact us directly.

2.2 Panels

The panels Figure2.1

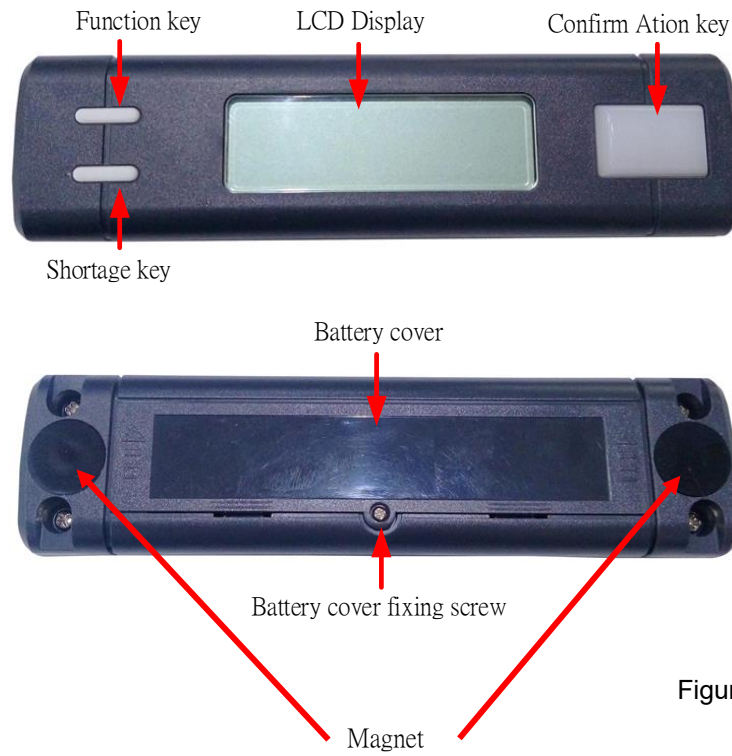


Figure 2.1

2.3 Battery installation

Loosen setscrew Figure 2.2



Figure 2.2

Point of application Figure 2.3



Figure 2.3

Press down and then push forward to remove the battery cover Figure 2.4



Figure 2.4

Battery cover detached from ATW315 body Figure 2.5



Figure 2.5

Install the battery. Pay attention to the positive and negative battery positions during installation.

Figure 2.6



Figure 2.6

Caution: Risk of explosion if the battery is replaced by an incorrect type.

Replace the battery cover and lock the screws Figure 2.7



Figure 2.7

Complete the battery installation. Product starts into standby Figure 2.8



Figure 2.8

2.4 Connect Wireless Pick to Light

Before setting the wireless Pick to Light, the Wireless coordinator must complete the setting. Please refer to the ATW310 user manual for the operation..

Click **“Coord ID/Addr”**. Figure2.9

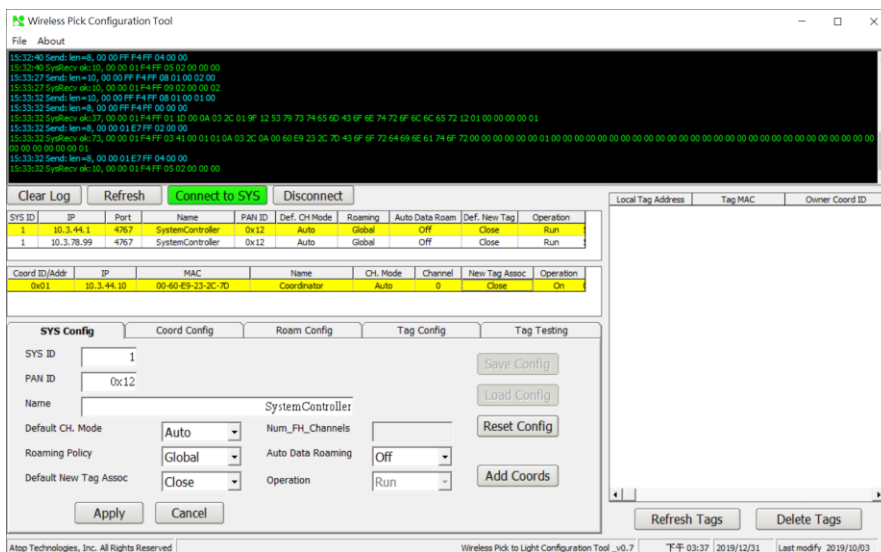


Figure 2.9

Click **“Coord config”**. Figure 2.10

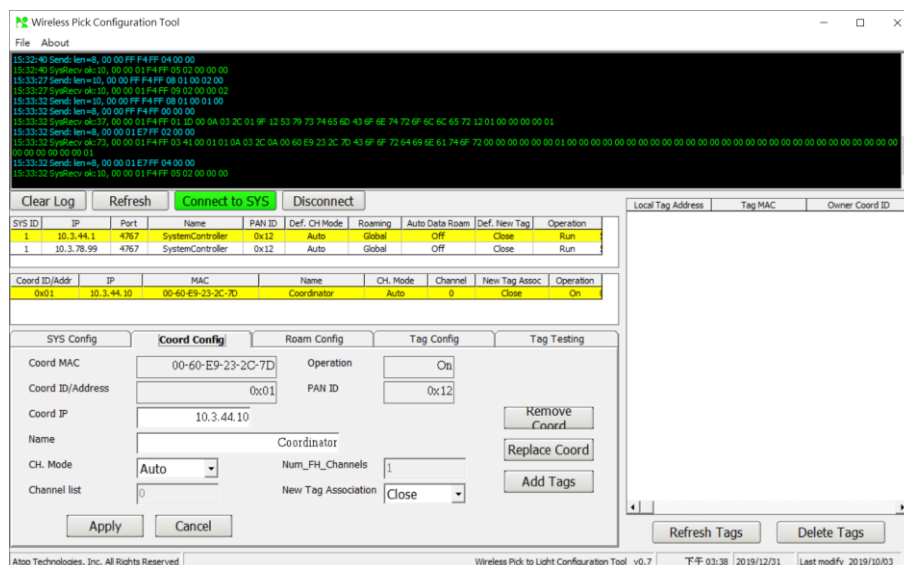


Figure 2.10

Set up Wireless Pick To Light channel.

CH.Mode field options”**FIX**”

Channel List field Select a Wireless Pick To Light channel Default channel 1 this example is 8.

New Tag Association field options”**open**”

Click “**APPLY**” Figure 2.11

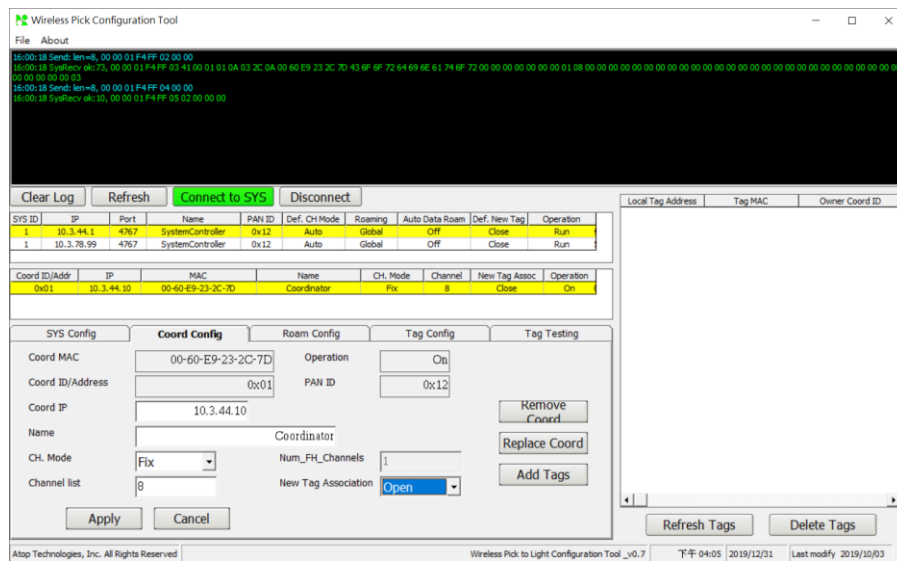


Figure 2.11

Click “**Add Tags**” enter List of new Tag detected screen Figure2.12

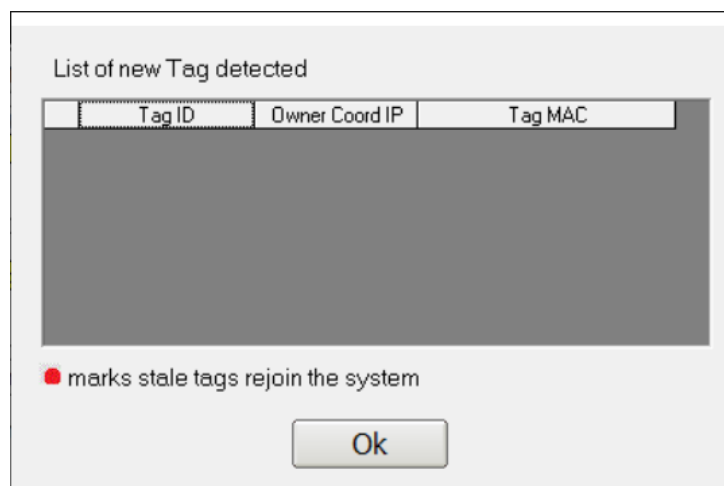


Figure 2.12

Start setting Wireless Pick to Light ID address.

Before setting, you must confirm that the tag displays **PEND** before setting. Figure2.13



Figure 2.13

Setting Wireless Pick To Light ID address. Figure 2.14

Step1. Press and hold the B key.

Step2. Press and hold the A key. (about 1s).

Step3. Release the A key.

Step4. Press C key to complete ID Address setting.



Figure 2.14

Follow the steps above to set the ID Address for the next Wireless Pick to Light

If TAG does not show PEND status, please follow the steps below. Figure 2.15



Figure 2.15.

- Step1. Press and hold the A key.
- Step2. Press C Key once. The LCD will display **TSTAG**.
- Step3. Release the A key
- Step4. Press B Key once. The LCD will display **DEFLT**.
- Step4. Press C Key once. The LCD will display **PEND**.

Click **“OK”**. Complete the Wireless Pick To Light ID Address setting. The screen will display Tag ID related information as shown below. Figure 2.16 & 2.17

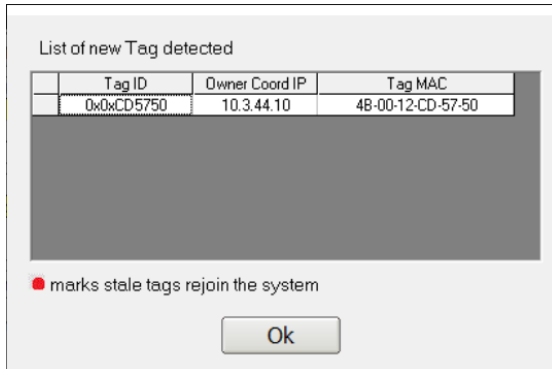


Figure 2.16

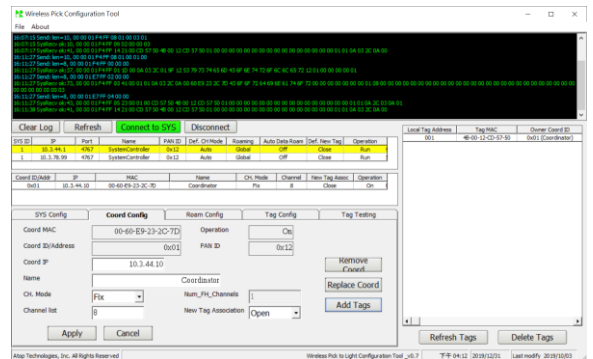
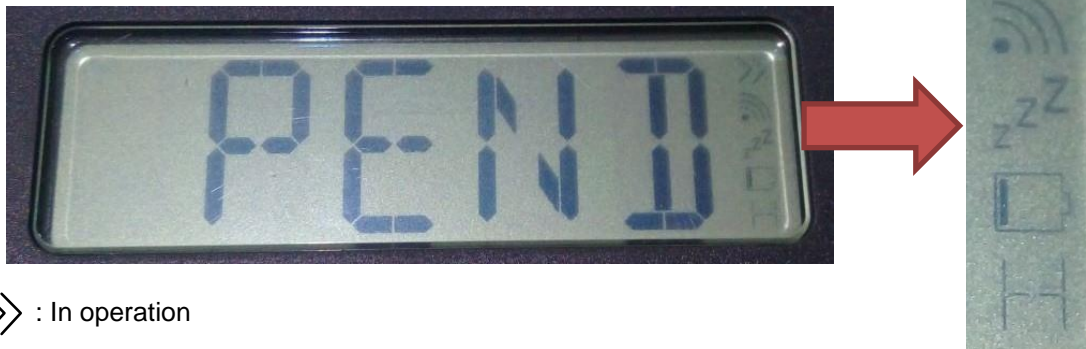


Figure 2.17

2.5 Icon definition

Icon definition Figure 2.18



>> : In operation

📶 : Connect the wireless controller

zzZ : No wireless controller

🔋 : Icon display when battery capacity is below 15%

P : Is pend or boot state

⊠ : Is test mode

E : Is something error

D : Show address

R : Is redisplay state

N : Normal state

Figure 2.18

2.6 Stand-alone self-test

Step1. Press and hold the A key.

Step2. Click C key. Product display as shown on the right.



Step3. Release the A key.

Step4. Click C key. After the test is completed, the screen will display the next C key test



Step5. Click C key. After the test is completed, the screen will display the next A key test.



Step6. Click A key. After the test is completed, the screen will display the next B key test.



Step7. Click B key. After the test is completed, the screen will show the red light test.



Step8. Click C key. After the test is completed, the screen will show the green light test.



Step9. Click C key. After the test is completed, the screen will show the blue light test.



Step10. Click C key. After the test is completed, the screen will the next LCD test.



Step11. Click C key. Product display as shown on the right.



Step12. Click C key. Product display as shown on the right.



Step13. Click C key. Product display as shown on the right.



Step14. Click C key. Product display as shown on the right.



Step15. Click C key. Product display as shown on the right.



Step16. Click C key. Product display as shown on the right.



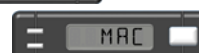
Step17. Click C key will show the battery power test.



Step18. Click C key screen shows battery level.



Step19. Click C key will show the product MAC address.



Step20. Click C key to display the MAC address.



Step21. Click C key to end the self- test.



Step22. Click C key to end the self-test and return to standby.

3 Specifications

3.1 Specifications

DISPLAY:

Type: Segment F-STN LCD

Size: 75 x 31.25 x 2.85mm/88 Icons (4 com x 22 seg)

COMMUNICATION:

Frequency Radio Bands: 915MHz RF Transceiver.

Modulation: GFSK

Data Rate: Maximum up to 150 KBaud.

Radio Power: +10dBm

RX Sensitivity: Maximum up to -95 dBm(150kbps).

POWER

Changeable Battery Cell Slot Socket: Alkaline, DC1.5V, AA size x 2, one time

WORK ENVIRONMENT

Temperature in Operation: -10 to 55°C

Temperature in Storage: -20 to 60°C

Humidity in Operation: 10~80%

Humidity in Storage: 10~85%

MECHANICAL

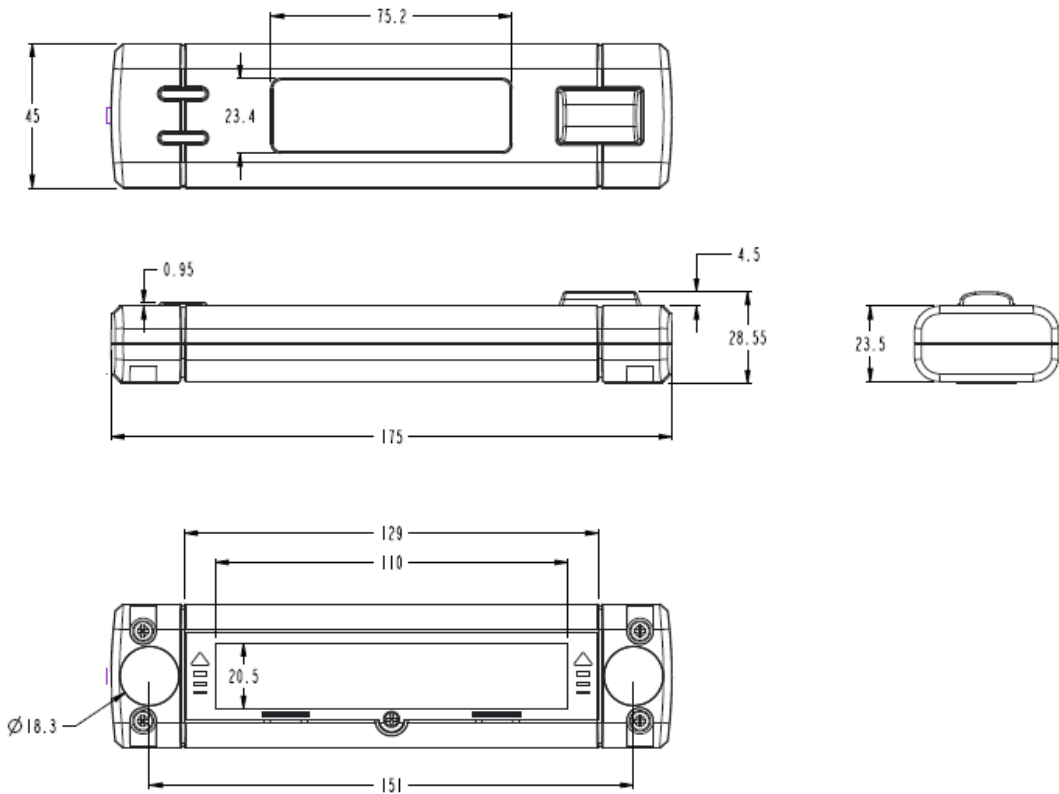
Dimension: (W/H/D)

175 x 45 x 23.5 mm

Weight:

130g (include 2 AA batteries)

3.2 Three View Drawing:



4 Installation overview

4.1 Mounting to a steel / iron shelf

This product has a magnet that can directly adsorb steel / iron shelves Figure 4.1

for mounting at heights $\leq 2M$

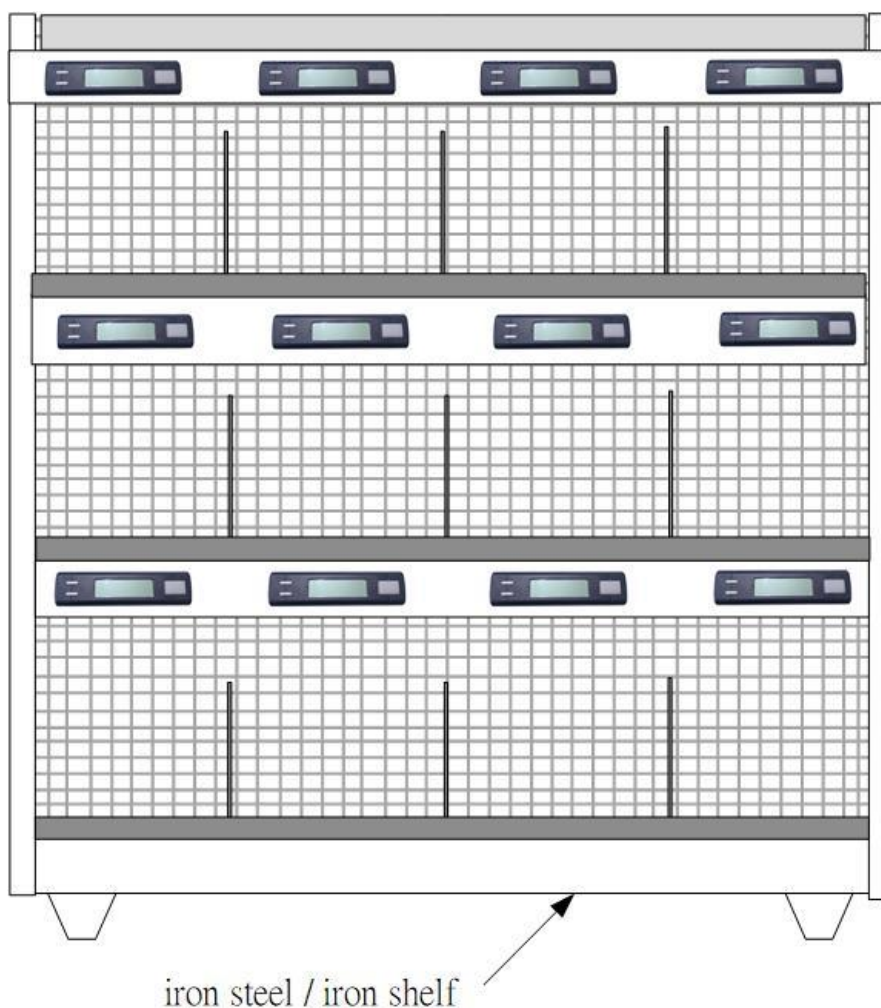


Figure 4.1

5 Warranty

Limited Warranty Conditions

Products supplied by us are covered in this warranty for undesired performance or defects resulting from shipping, or any other event deemed to be the result of Atop Technologies' mishandling. The warranty does not cover however, equipment which has been damaged due to accident, misuse, abuse, such as:

- Use of incorrect power supply, connectors, or maintenance procedures
- Improper or insufficient ventilation
- Improper or unauthorized repair
- Replacement with unauthorized parts
- Failure to follow Our operating Instructions
- Fire, flood, "Act of God", or any other contingencies beyond our control.

RMA and Shipping Reimbursement

- Customers must always obtain an authorized "RMA" number from us before shipping the goods to be repaired.
- When in normal use, a sold product shall be replaced with a new one within 3 months upon purchase. The shipping cost from the customer to us will be reimbursed.
- After 3 months and still within the warranty period, it is up to us whether to replace the unit with a new one; normally, as long as a product is under warranty, all parts and labor are free of charge to the customers.
- After the warranty period, the customer shall cover the cost for parts and labor.
- Three months after purchase, the shipping cost from you to us will not be reimbursed, but the shipping costs from us to the customer will be paid by us.

Limited Liability

Atop Technologies Inc., shall not be held responsible for any consequential losses from using our products.