



EQUIPMENT FCC ID : RPMUSPICC

Exhibit 1 FCC ID LABEL

Page : 1/2

Written by : D. RAUD

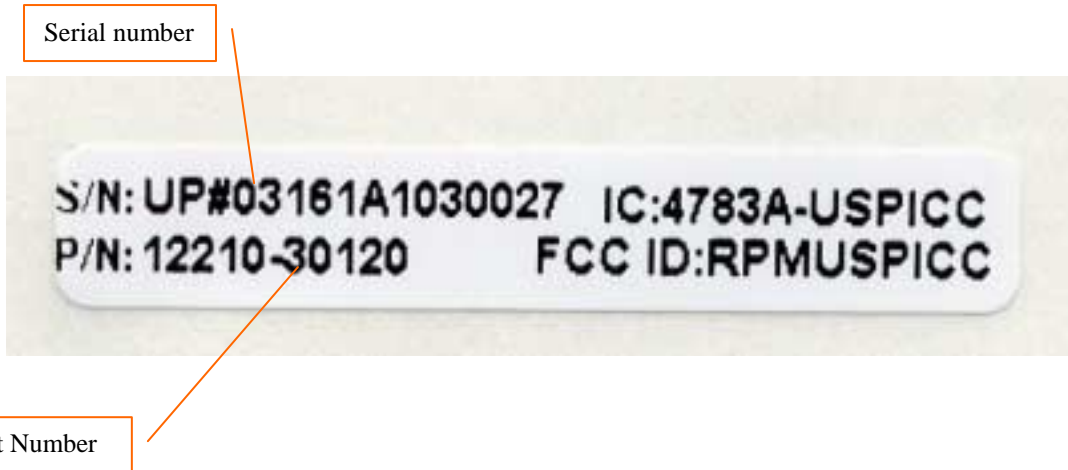
November 4, 2003

Test report # : 195001DK

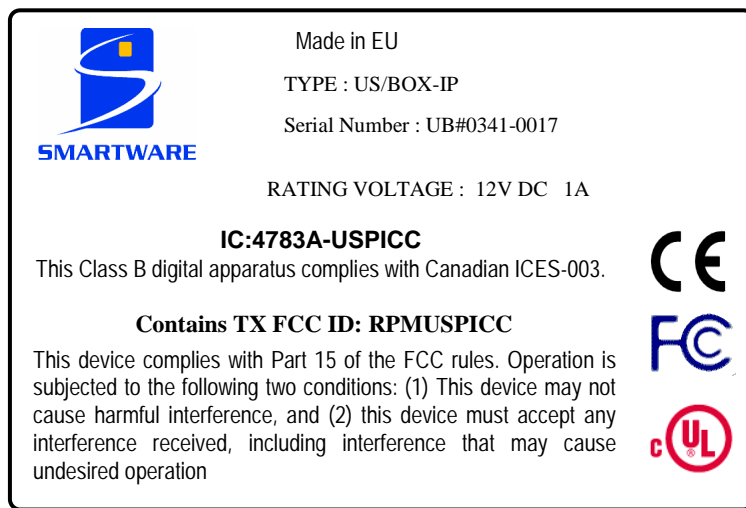
1 PRODUCT LABELLING

1.1 FCC ID LABEL

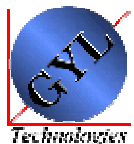
A label placed on the board, gives the Part and serial number and the FCCID as shown below



A label placed on the equipment that use the EUT, gives Manufacturer name, Equipment type, Serial number, ratings, and recall the FCCID and the FCC statement as shown below

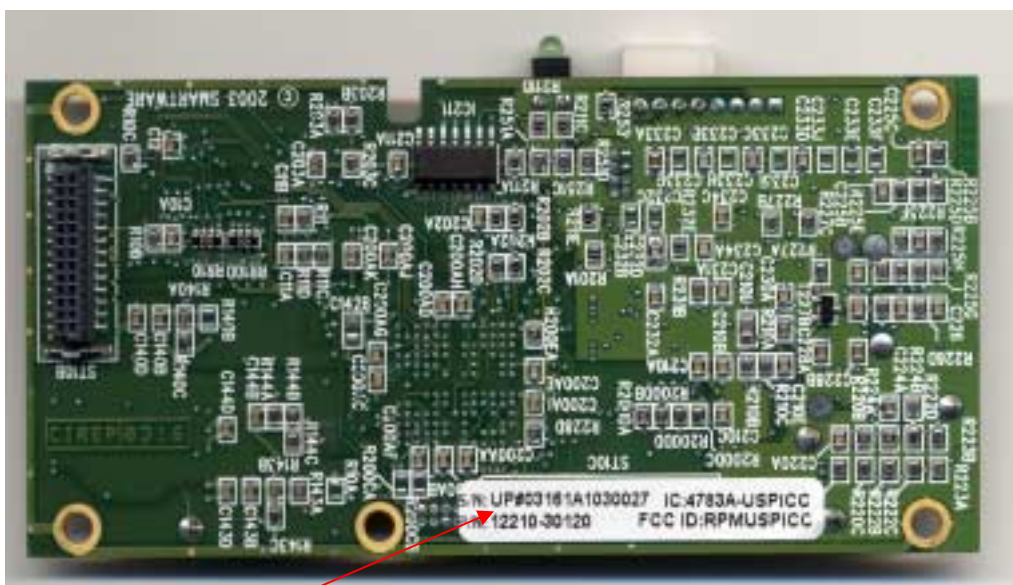


The user manual also provides the information, required by section 15.105, to the user. The following statement is placed in a prominent location in the manual: (see user manual abstract given in exhibit 4)



1.2 LOCATION OF THE LABEL ON EUT

the label is located to the solder side of the board as shown by the picture below



Location of
the label

For a typical application the label is located to the bottom of the plastic enclosure as shown by the picture below

