

| | | | |
|---|--|---|--|
| CONFIDENTIAL |  <i>Pen Generations</i> | Document No: <i>PG_AD601_QA_General Inspection Di</i> <i>Specification</i> | |
| Title: <ADP601> General Inspection Direction Specification | | Revision: B1 | |
| Prepared by: <i>Choul Goo Lee, Taeyoung Ko</i> | | Date: 2011.09.27. | |

GENERAL INSPECTION DIRECTION SPECIFICATION

| | | |
|---|--|---|
| CONFIDENTIAL |  <i>Pen Generations</i> | Document No: <i>PG_AD601_QA_General Inspection Di</i> <i>Specification</i> |
| Title: <ADP601> General Inspection Direction Specification | | Revision: B1 |
| Prepared by: Choul Goo Lee, Taeyoung Ko | | Date: 2011.09.27. |

Table of Content

| | |
|---|---|
| <i>GENERAL INSPECTION DIRECTION SPECIFICATION</i> | 1 |
| TABLE OF CONTENT | 2 |
| 1 COSMETIC INSPECTION | 3 |
| 1.1 Shape | 3 |
| 1.2 Appearance | 3 |
| 1.3 Others | 4 |
| 1.4 2D Drawing | 5 |
| 2 PAIRING & WRITING TEST | 6 |
| 2.1 Using ANOTO ‘streamer test tool’ | 6 |
| 2.2 Using PG ‘drawing test program’ | 9 |
| CHANGE HISTORY | 1 |

| | | |
|---|---|---|
| CONFIDENTIAL |  | Document No: PG_AD601_QA_General Inspection Direction Specification |
| Title: <ADP601> General Inspection Direction Specification | | Revision: B1 |
| Prepared by: Choul Goo Lee, Taeyoung Ko | | Date: 2011.09.27. |

1 COSMETIC INSPECTION

1.1 Shape

| Item | Inspection method | Inspection content | Judgment |
|-------------|-------------------|---------------------------------|-----------------|
| 1 Dimension | N=5PCS/LOT | Please see the drawing of parts | C=0 In the Spec |

1.2 Appearance

① Plastic parts

| Item | Inspection method | Inspection content | Judgment |
|---|-------------------|--|---|
| 1 Color | S=4PCS/LOT | All surroundings are watched from the front and the diagonal 45 degrees. | C=0 It depends on color standard sample for plastic parts. |
| 2 Defect of Injection (Flow mark, Weld line, Crack, Mark of E-Pin, Burr, Short Short, Deform, Strees whitening Silver | Total inspection | All surroundings are watched from the front and the diagonal 45 degrees. | It depends on limit sample (it makes if necessary.) |
| 3 Foreign substance (Black Dot, Discoloration) | Total inspection | All surroundings are watched from the front and the diagonal 45 degrees. Limit of Black dot size: please see other page. | It depends on limit sample (it makes if necessary.) |
| 4 Scratch, Grime | Total inspection | All surroundings are watched from the front and the diagonal 45 degrees. | It depends on limit sample (it makes if necessary.) |

② Coating (UV Coating, SF Coating)

| Item | Inspection method | Inspection content | Judgment |
|--|-------------------|---|--|
| 1 Color, Gloss | S=4/LOT | All surroundings are watched from the front and the diagonal 45 degrees. | C=0 It depends on limit sample. |
| 2 Leveling, irregular color | Total inspection | All surroundings are watched from the front and the diagonal 45 degrees. | It depends on limit sample. (It makes if necessary.) |
| 3 Foreign substance in coating surface | Total inspection | All surroundings are watched from the front and the diagonal 45 degrees. Limit of Black dot size: please see other page | It depends on limit sample. (It makes if necessary.) |

| | | |
|---|---|---|
| CONFIDENTIAL |  | Document No: PG_AD601_QA_General Inspection Direction Specification |
| Title: <ADP601> General Inspection Direction Specification | | Revision: B1 |
| Prepared by: Choul Goo Lee, Taeyoung Ko | | Date: 2011.09.27. |

| | | | | |
|---|--|------------------|--|---|
| 4 | Defect of coating (Dripping off, Whitening) | Total inspection | All surroundings are watched from the front and the diagonal 45 degrees. | It depends on limit sample. (It makes if necessary.) |
| 5 | Scratch, Grime | Total inspection | All surroundings are watched from the front and the diagonal 45 degrees. | It depends on limit sample. (It makes if necessary.) |

✓ The Sampling inspection method applies to JIS Z9015-1=1999.

1.3 Others

The following table is applied to the inspection of the foreign substance of painting and foreign substance of the plastics.

① Assembly

| | |
|-----|--|
| Gap | gap is within limit [0.05mm Pass / 0.1mm Fail] / Length : 20mm |
|-----|--|

② Classification of surface

| | |
|-----------|---|
| A surface | All aspects part that comes within the sweep seeing product in the front |
| B surface | Side and the back part that doesn't come within the sweep seeing product in the front |
| C surface | The lower side and non-exposure side of product |

③ Substance

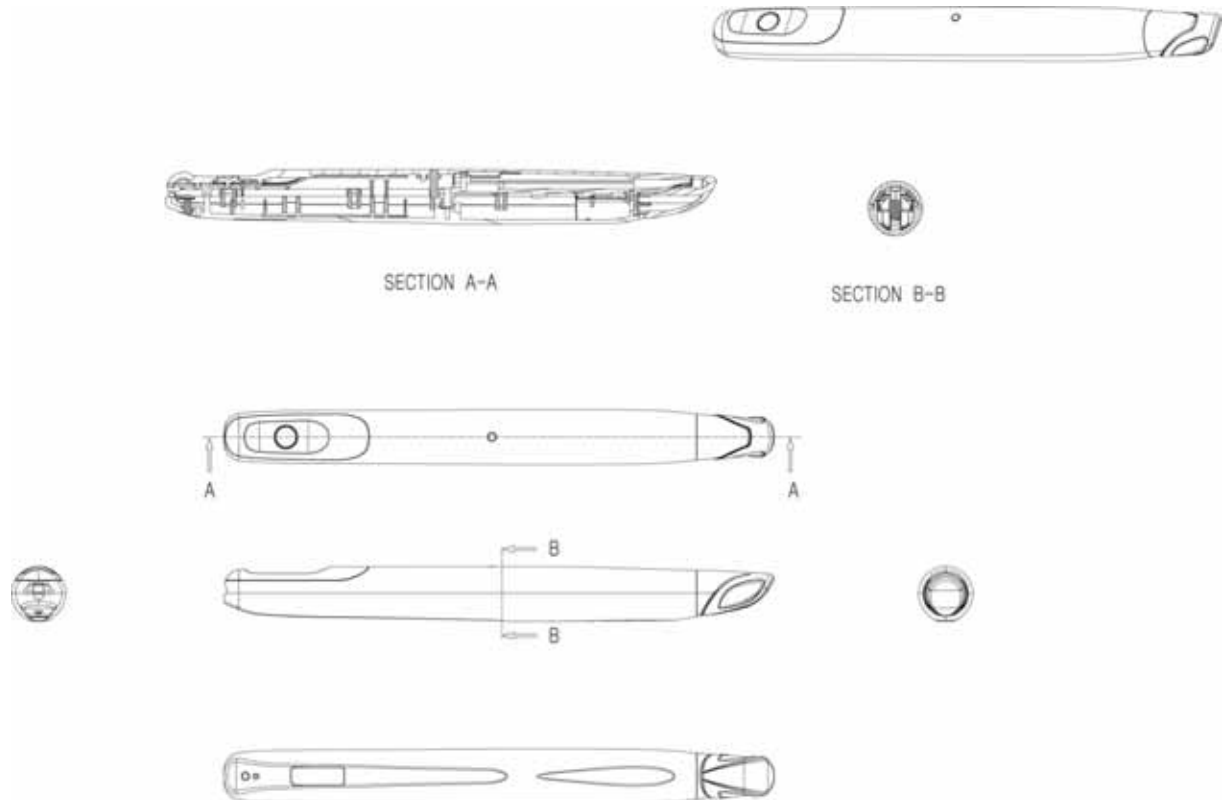
| | |
|-------------|--|
| Dot | Hardening of paints and foreign substance other than paints : Same color |
| Black point | Foreign substance Black color |
| Bubble | Bubble generated in painting |

④ Environment of inspection

| | |
|---------------------|---|
| Judgement Condition | (1) The visual inspection watches all surroundings from the front and the diagonal 45 degrees. |
| | (2) The visual inspection distance is 30cm |
| | (3) It inspects by using the worktable under the daylight color fluorescent lamp Illuminance is 600~900LUS |
| Inspector | 0.7 or more in the corrected eyesight. |

| | | |
|---|---|---|
| CONFIDENTIAL |  | Document No: PG_AD601_QA_General Inspection Direction Specification |
| Title: <ADP601> General Inspection Direction Specification | | Revision: B1 |
| Prepared by: Choul Goo Lee, Taeyoung Ko | | Date: 2011.09.27. |

1.4 2D Drawing



Note

- The above drawing shows a painting foreign substance and black dot control chart.
- Refer to the table below for a black dot size.
- The size of the foreign substance makes the table below a standard, and is decided separately depending on the limit sample.

| Surface | Permission size mm ² | | Note |
|---------------------------|---|---|--|
| | The foreign substance of same color | The foreign substance of difference color | |
| A surface | NG ≥ 0.03 | NG ≥ 0.02 | Gap of foreign substance is 20mm or more |
| | OK ≥ 0.03 same color, 2 pieces or less | OK ≥ 0.02 same color, 2 pieces or less | |
| | No need inspection ≥ 0.01 | | |
| B surface | NG ≥ 0.05 | NG ≥ 0.03 | Gap of foreign substance is 20mm or more |
| | OK ≥ 0.05 same color, 2 pieces or less | OK ≥ 0.03 same color, 2 pieces or less | |
| | Refer to the column of the different color for the foreign substance of silver and a bright color | | |
| C surface Core surface | No need inspection | | |

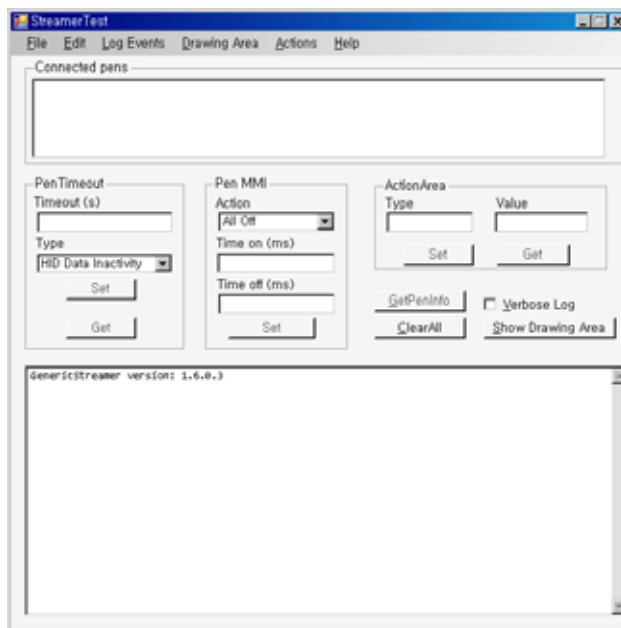
| | | |
|---|---|--|
| CONFIDENTIAL |  Pen Generations | Document No: PG_ADP601_QA_General Inspection Direction Specification |
| Title: <ADP601> General Inspection Direction Specification | | Revision: B1 |
| Prepared by: Choul Goo Lee, Taeyoung Ko | | Date: 2011.09.27. |

2 PAIRING & WRITING TEST

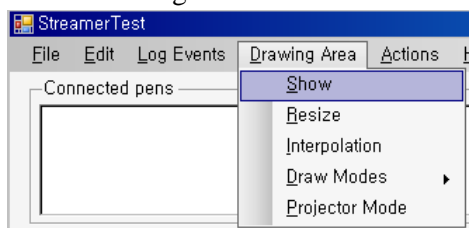
It basically uses the ANOTO 'streamer test tool' for IQC. If needed, we also add the PG 'drawing test tool' which is same to test tool used on FT2 product test.

2.1 Using ANOTO 'streamer test tool'

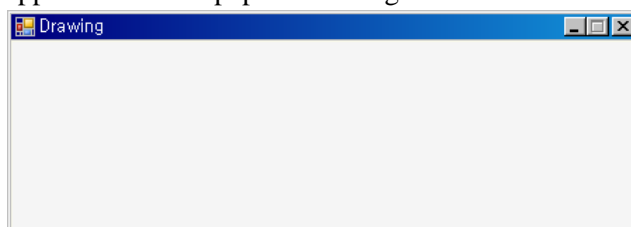
- ① Execute the streamer test tool



- ② Click <Drawing Area → Show>



- ③ Appear the memo paper 'Drawing'

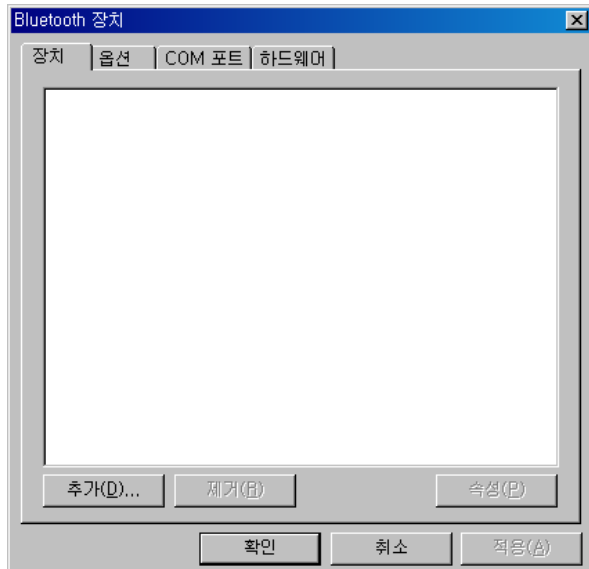


- ④ Double-Click 'Bluetooth' icon on windows bottom side.

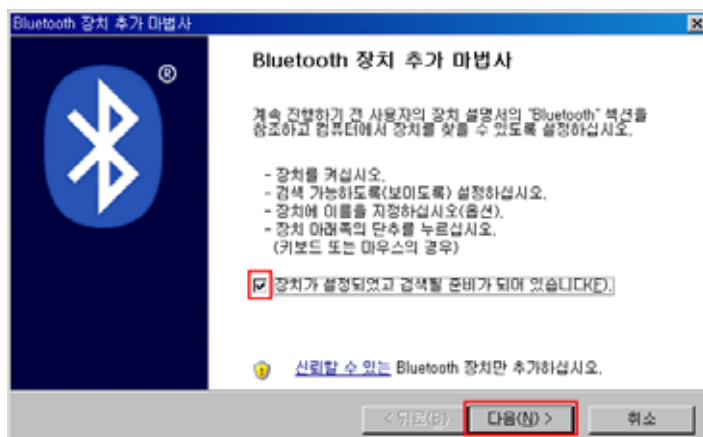


| | | |
|---|---|---|
| CONFIDENTIAL |  | Document No: PG_AD601_QA_General Inspection Di Specification |
| Title: <ADP601> General Inspection Direction Specification | | Revision: B1 |
| Prepared by: Choul Goo Lee, Taeyoung Ko | | Date: 2011.09.27. |

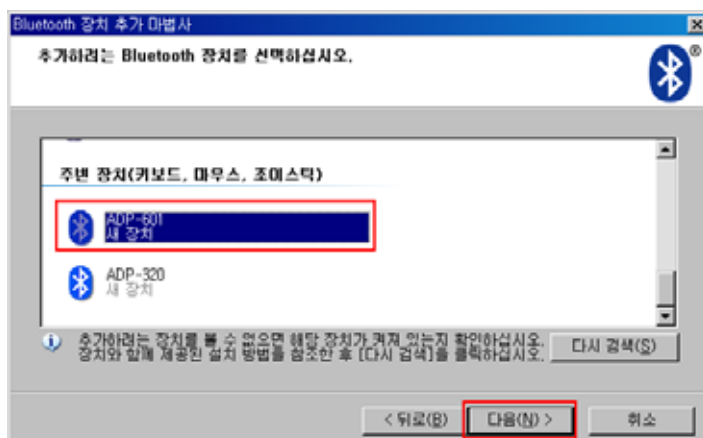
- ⑤ ‘Bluetooth Device’ is displayed. Press ‘ADD’ button as RED BOX.



- ⑥ Click the check box and Click <Next> button.

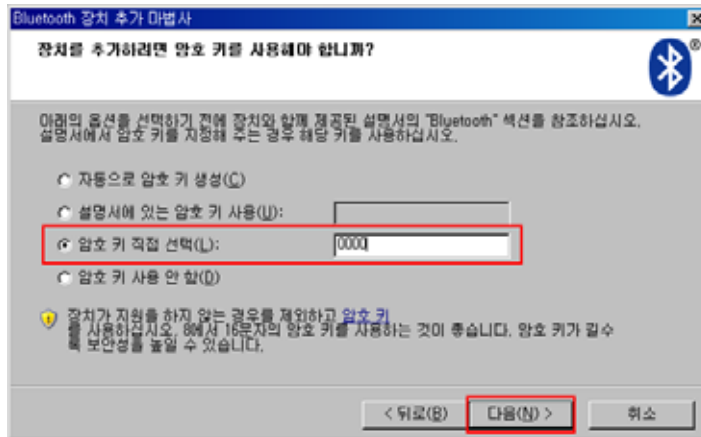


- ⑦ Select the correct device and Click <Next> button.



- ⑧ Enter the password ‘0000’ to 3rd edit control and Click <Next> button.

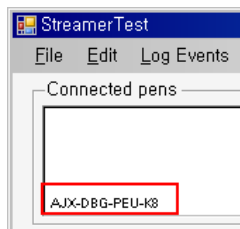
| | | |
|---|---|--|
| CONFIDENTIAL |  | Document No: PG_ADP601_QA_General Inspection Direction Specification |
| Title: <ADP601> General Inspection Direction Specification | | Revision: B1 |
| Prepared by: Choul Goo Lee, Taeyoung Ko | | Date: 2011.09.27. |



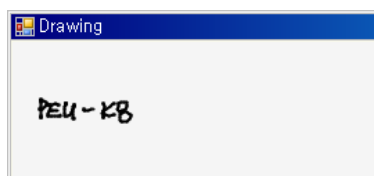
- ⑨ Click <Finish> button.



- ⑩ Tab the pen tip on test paper. Pen ID is displayed in streamer test. The value must be same to Pen ID value written on ID sheet label.

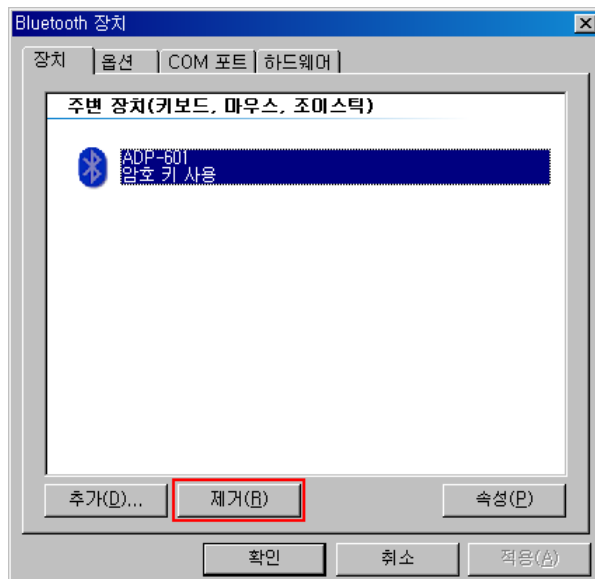


- ⑪ Writing last 5 digits of pen ID on test paper. The value is displayed in drawing of streamer test tool.



- ⑫ Select pen icon and Click <Remove> button. Delete the Bluetooth connection record.

| | | |
|---|---|---|
| CONFIDENTIAL |  Pen Generations | Document No: PG_AD601_QA_General Inspection Di Specification |
| Title: <ADP601> General Inspection Direction Specification | | Revision: B1 |
| Prepared by: Choul Goo Lee, Taeyoung Ko | | Date: 2011.09.27. |



⑬ Repeat step 4 ~ 12.

2.2 Using PG ‘drawing test program’

The detailed description of this program refer to <PG-ADP601-MA-FT2 Test Station Guide-RevA.pdf>

FCC Information

This device complies with Part 15 of the FCC Rules. Operation is subject to the following two conditions:

- (1) This Device may not cause harmful interface, and
- (2) This device must accept any interference received, including interference that may cause undesired operation.

INFORMATION TO THE USER

This equipment has been tested and found to comply with the limits for a Class B digital device, pursuant to part 15 of the FCC Rules. These limits are designed to provide reasonable protection against harmful interference in a residential installation. This equipment generates, uses and can radiate radio frequency energy and, if not installed and used in accordance with the instructions, may cause harmful interference to radio communications. However, there is no guarantee that interference will not occur in a particular installation. If this equipment does cause harmful interference to radio or television reception, which can be determined by turning the equipment off and on, the user is encouraged to try to correct the interference by one more of the following measures:

- Reorient or relocate the receiving antenna.
- Increase the separation between the equipment and receiver.
- Connect the equipment into an outlet on a circuit different from that to which the receiver is connected.
- Consult the dealer or an experienced radio/TV technician for help.

WARNING

Any changes or modifications not expressly approved by the manufacturer could void the user's authority to operate the equipment.

"CAUTION: Exposure to Radio Frequency Radiation.

Antenna shall be mounted in such a manner to minimize the potential for human contact during normal operation. The antenna should not be contacted during operation to avoid the possibility of exceeding the FCC radio frequency exposure limit.