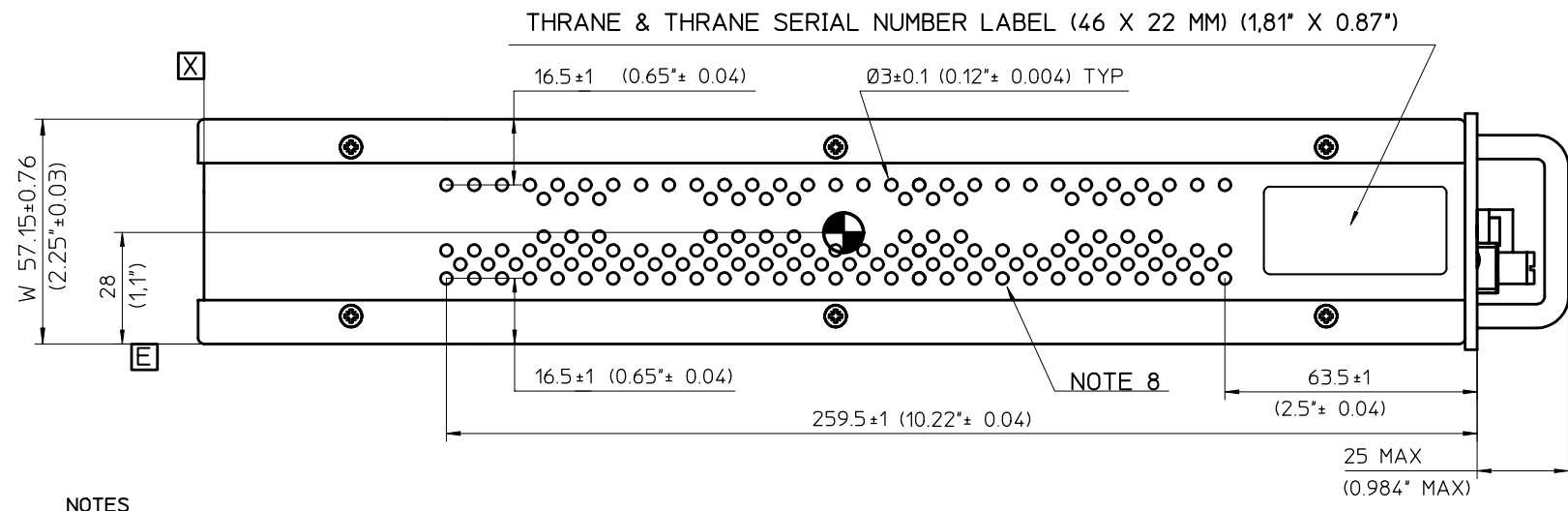
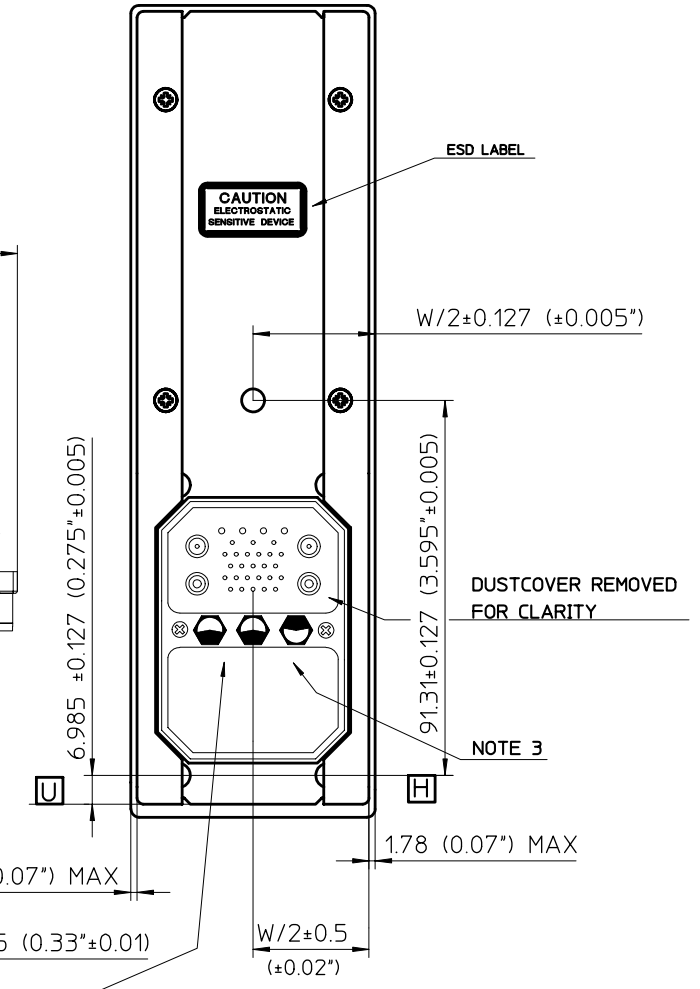
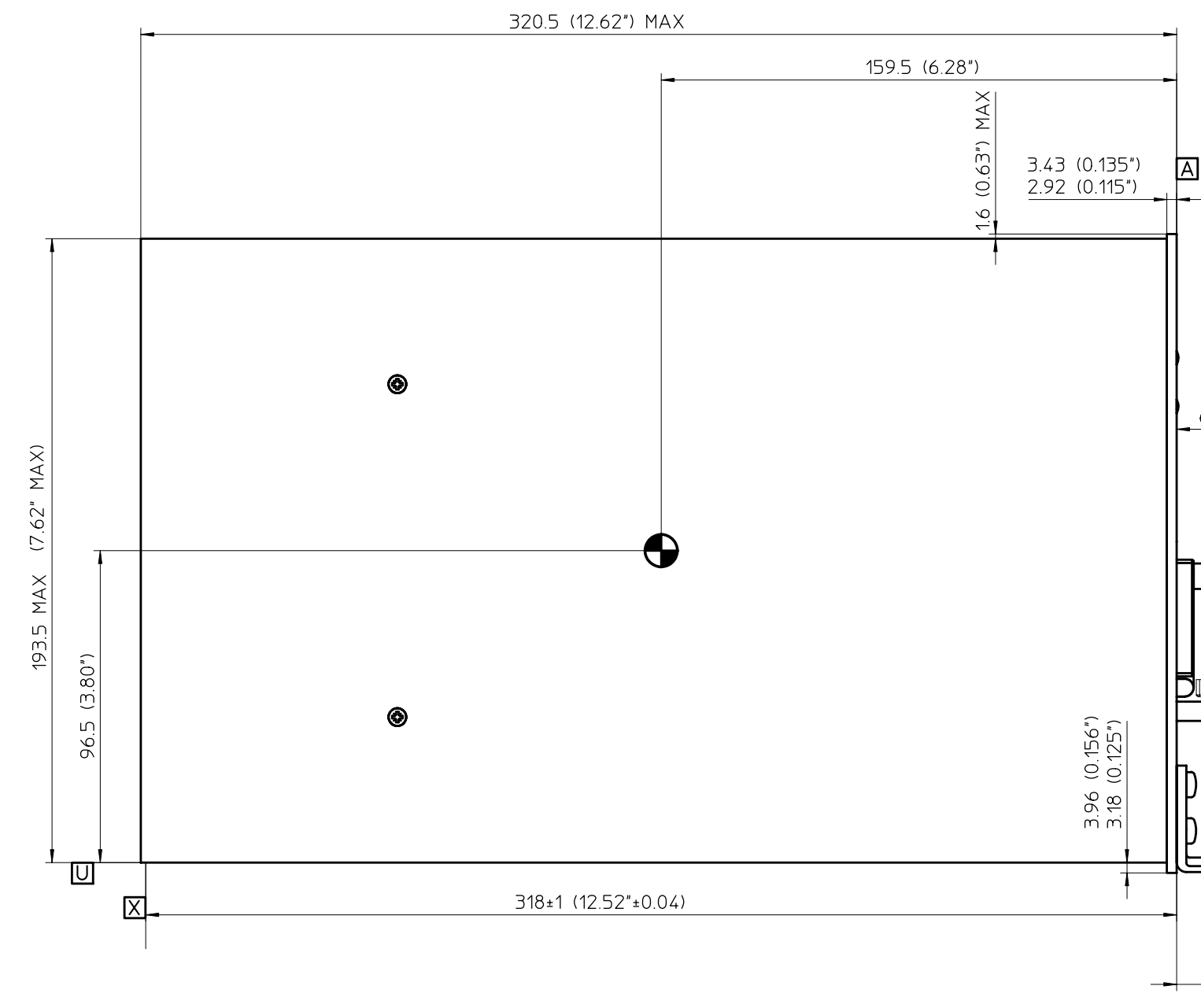
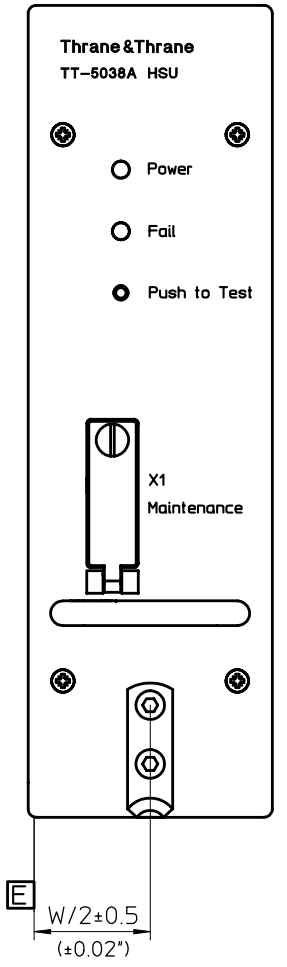


REVISIONS			
LTR	DESCRIPTION	DATE	APPROVAL
A	ORIGINAL	040513	JSP
B	REVISED		

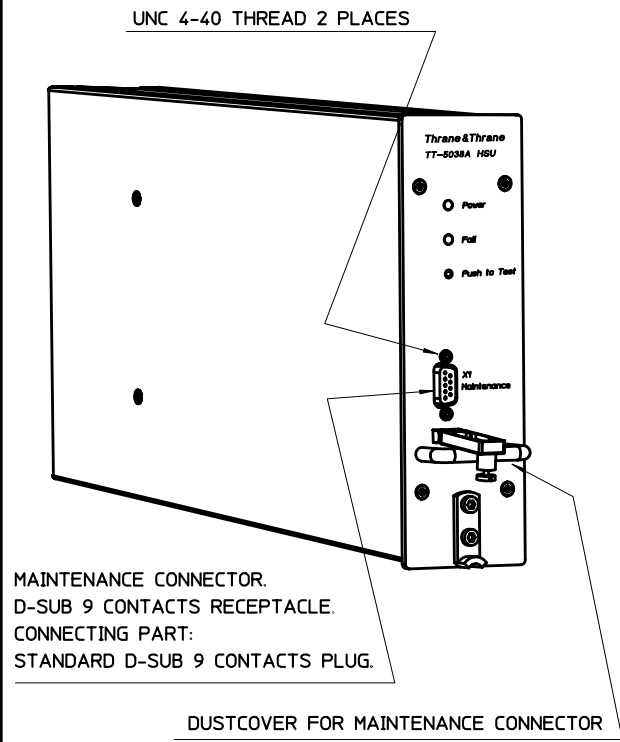


ARINC 404A DSX DUAL RECEPTACLE CONNECTOR  
RADIALL PART NO: 616 697 202  
INSERT A: 33C4. INSERT B: DUMMY

CONNECTING PART:

ARINC 404A DSX DUAL PLUG CONNECTOR  
RADIALL PART NO: 616 697 201  
INSERT A: 33C4. INSERT B: DUMMY  
25 SIZE 20HD CRIMP SOCKET CONTACTS P/N 616310  
4 SIZE 16 CRIMP SOCKET CONTACTS P/N 616330  
2 SIZE 5 TWINAX SOCKET CONTACTS P/N 616095005  
2 SIZE 5 COAXIAL SOCKET CONTACTS P/N 616021 (RG142 CABLE)  
INDEX CODE 04

- NOTES
- UNIT WEIGHT 2.11 KG ± 0.1 KG (4.65 LBS ± 0.22 LBS).
  - ⊕ DENOTES APPROXIMATE CENTER OF GRAVITY.
  - DARKEN PORTION INDICATES SOLID PART OF POLARIZING KEYWAY.
  - THE TT-5038A INSTALLATION IS IN ACCORDANCE WITH ARINC 404A 1/4 SHORT ATR EXCEPT FOR: THE COOLING AIRHOLES ARE PLACED OUTSIDE RECOMMENDED AREA.
  - DIMENSIONS ARE IN MILLIMETERS. DIMENSIONS IN BRACKETS ARE INCHES.
  - UNIT MATERIAL: ALUMINIUM.
  - UNIT FINISH: PAINT EPOXYESTER PRIMER + BLACK INFRASOL TOPCOAT. NO PAINT ON BOTTOM SIDE OF UNIT.
  - DO NOT BLOCK COOLING AIR HOLES. FORCED COOLING IS NOT RECOMMENDED. COOLING AIR HOLES ARE PLACED IDENTICALLY ON TOP AND BOTTOM SIDE OF UNIT.



THRANE & THRANE P/N 405038A

UNLESS OTHERWISE SPECIFIED DIMENSIONS AND TOLERANCES ARE IN ACCORDANCE WITH ARINC 404 1/4 SHORT ATR.	DR. Jesper Sundberg	040105	TITLE <b>Thrane &amp; Thrane A/S</b> Telecommunications Engineering Copenhagen Denmark OUTLINE DRAWING TT-5038A HSU
	CH. H. Christensen	040105	
	AP. Jesper Sundberg	040105	
MATERIAL SEE NOTES	FIRST ANGLE PROJECTION	SIZE A1	CODE IDENT NO. DRAWING NO. TT94-120439
SCALE 1:1		SHEET 1 OF 1	