

Photographs module 20083484PMI

Internal

PHOTOGRAPH 1: - 6216, INSIDE VIEW, TOP PART	2
PHOTOGRAPH 2: - 6216, INSIDE VIEW, BOTTOM PART	3
PHOTOGRAPH 3: - 6216, MAIN PCB, TOP VIEW	4
PHOTOGRAPH 4: - 6216, MAIN PCB, TOP VIEW, COVERS REMOVED	5
PHOTOGRAPH 5: - 6216, MAIN PCB, REAR VIEW	6
PHOTOGRAPH 6: - 6216, HEAT SINK	7
PHOTOGRAPH 7: - 6202, HAND MICROPHONE, INSIDE VIEW	8
PHOTOGRAPH 8: - 6202, HAND MICROPHONE, INSIDE VIEW	9
PHOTOGRAPH 9: - 6202, HAND MICROPHONE PCB	10
PHOTOGRAPH 10: - 6209, ACCESSORY CONNECTION BOX	11

Photograph 1: - 6216, inside view, top part

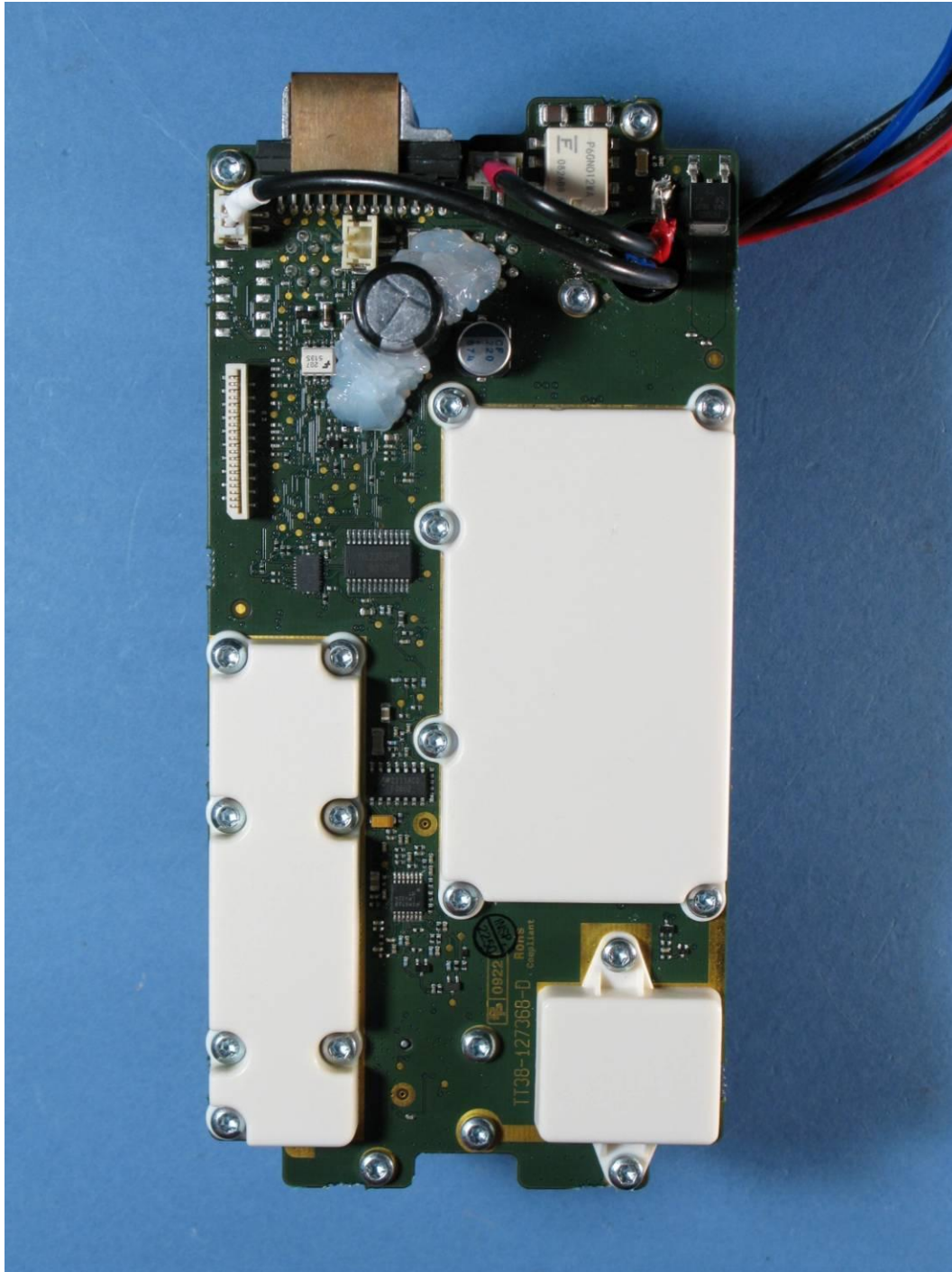


Remark: the hardware of the 6215 and 6216 models is identical. The software is different. Model 6210 is a down-graded version of model 6215.

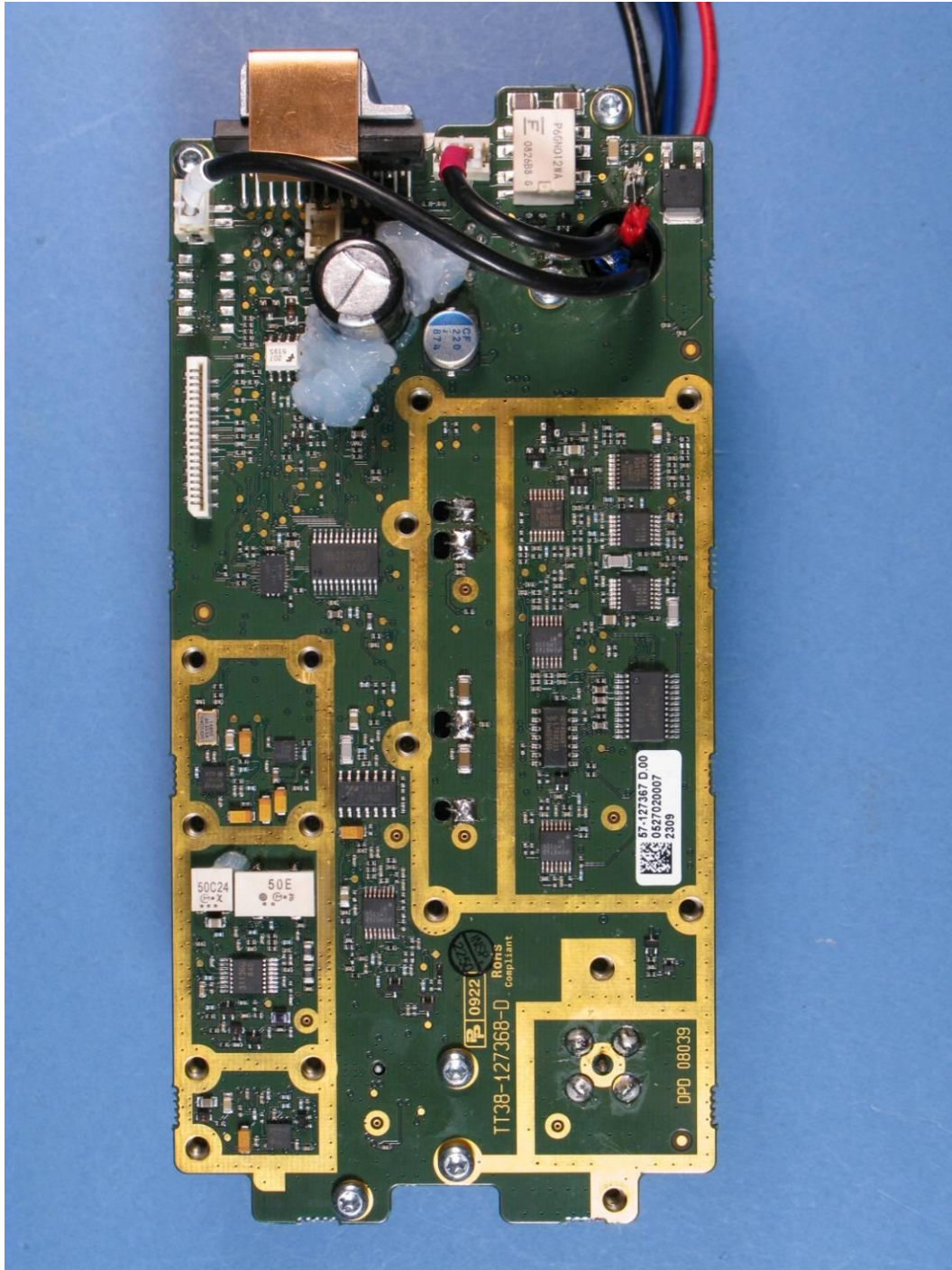
Photograph 2: - 6216, inside view, bottom part



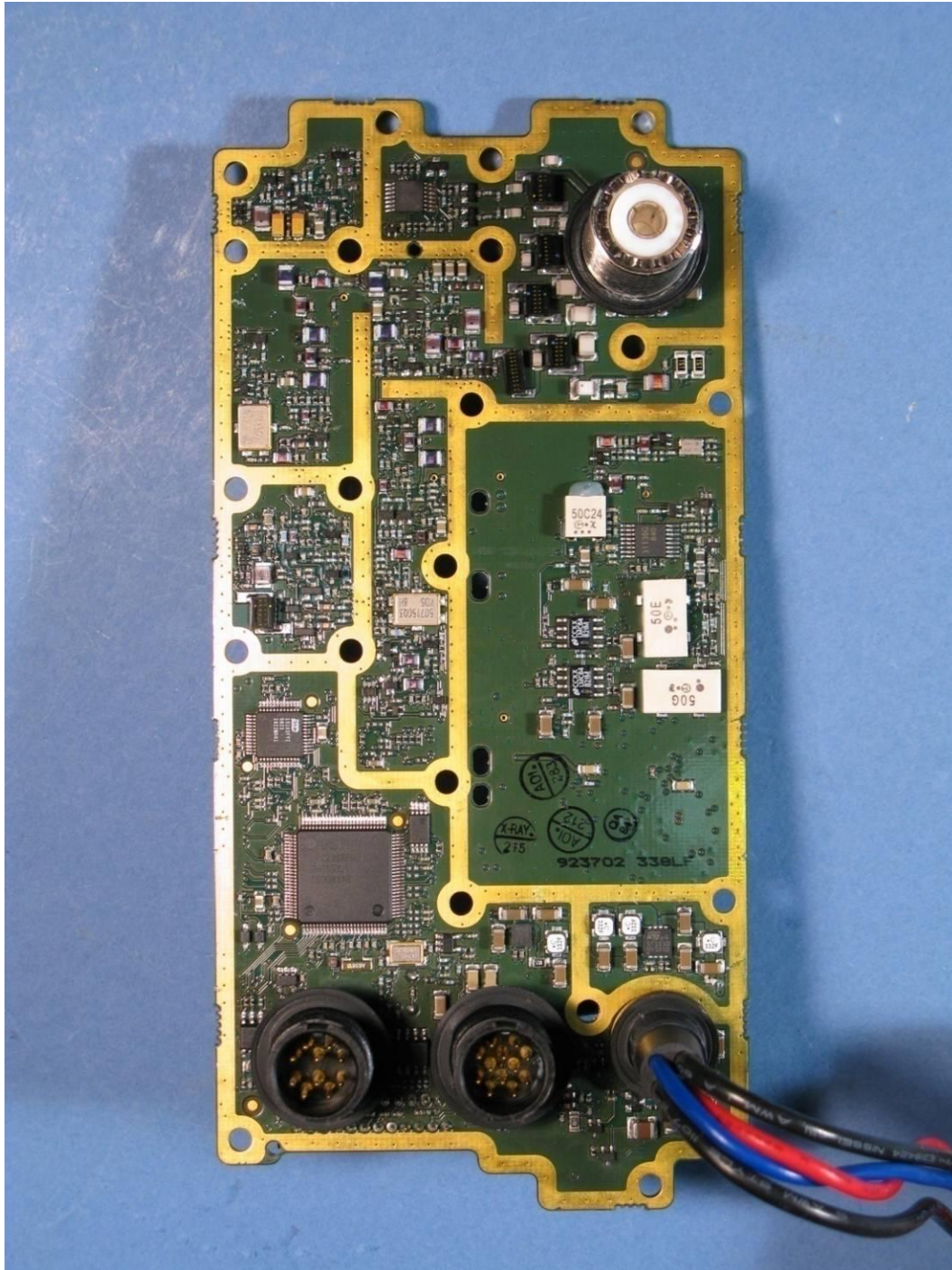
Photograph 3: - 6216, main PCB, top view



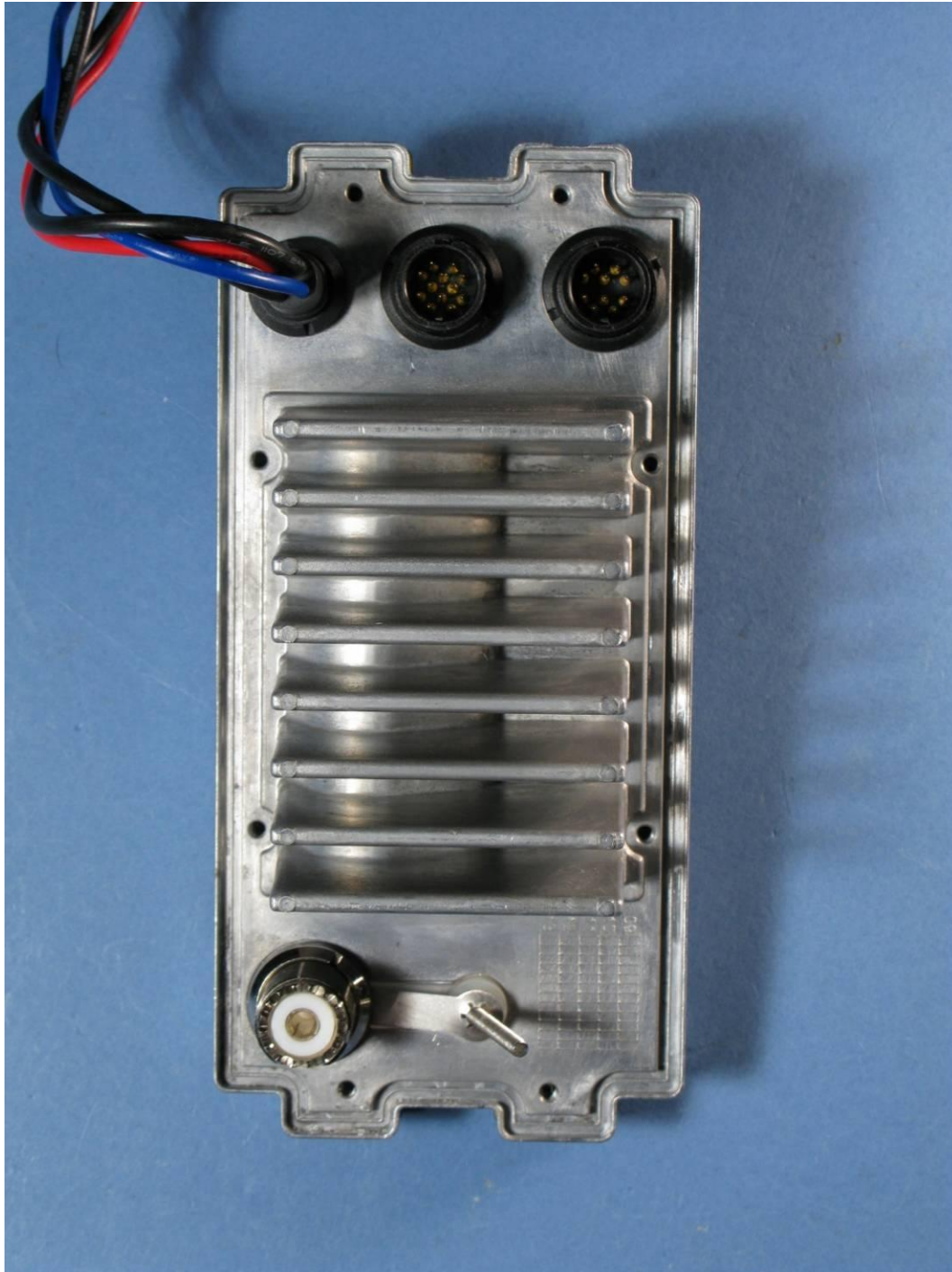
Photograph 4: - 6216, main PCB, top view, covers removed



Photograph 5: - 6216, main PCB, rear view



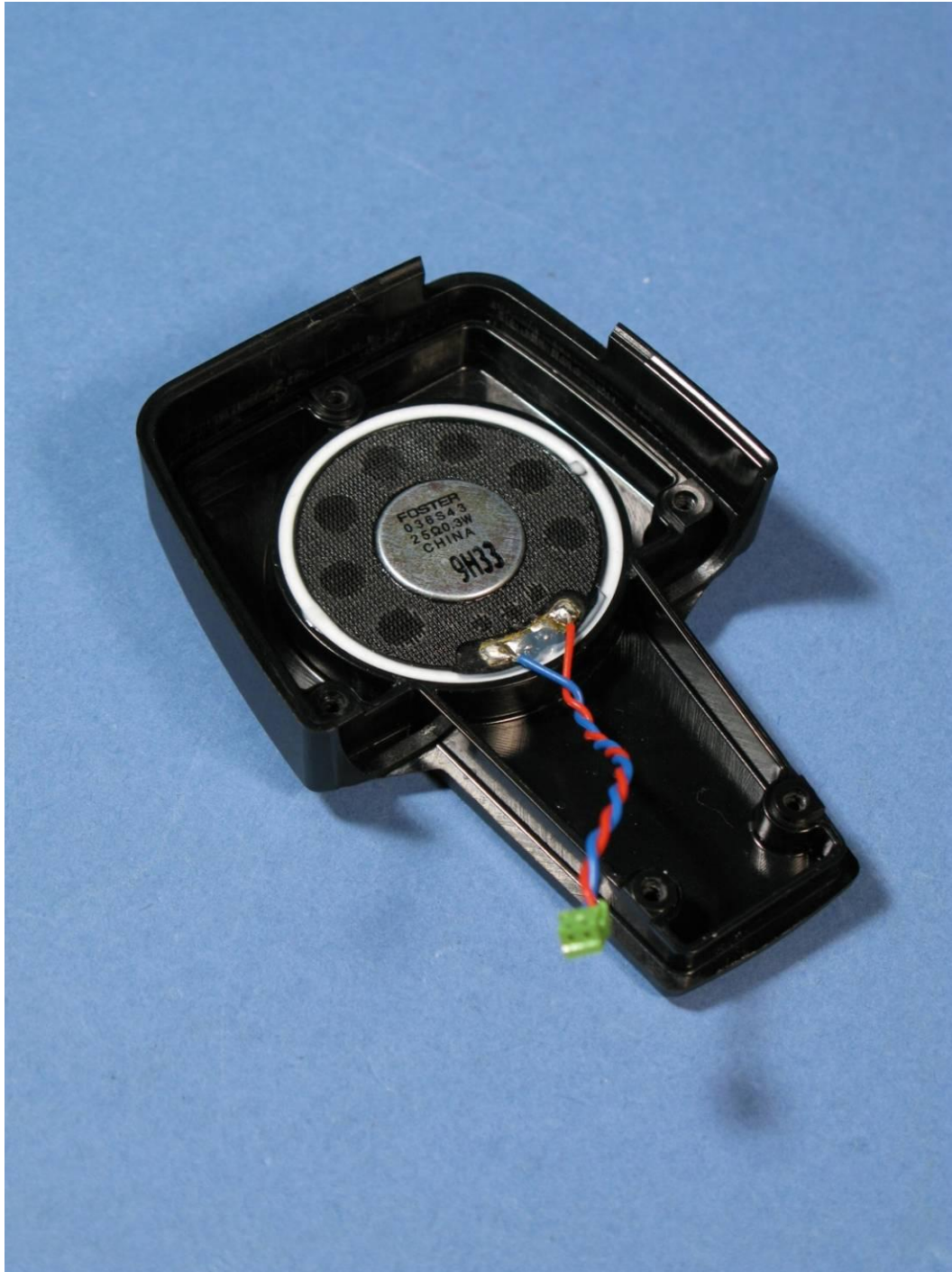
Photograph 6: - 6216, heat sink



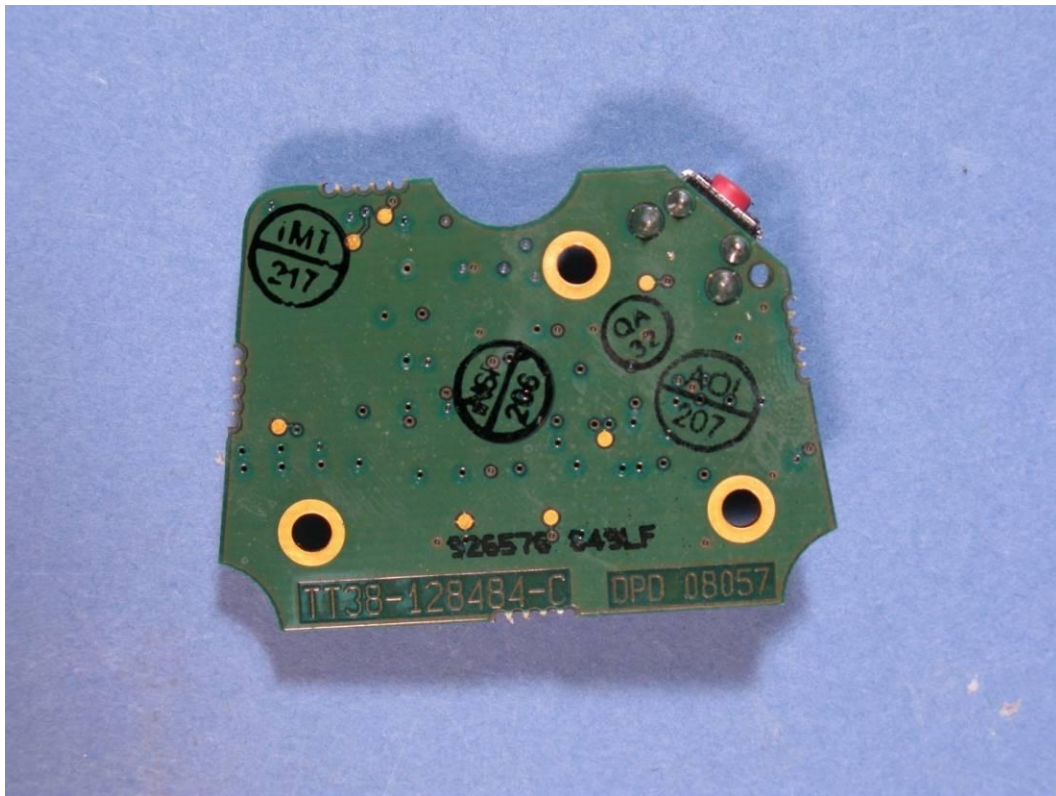
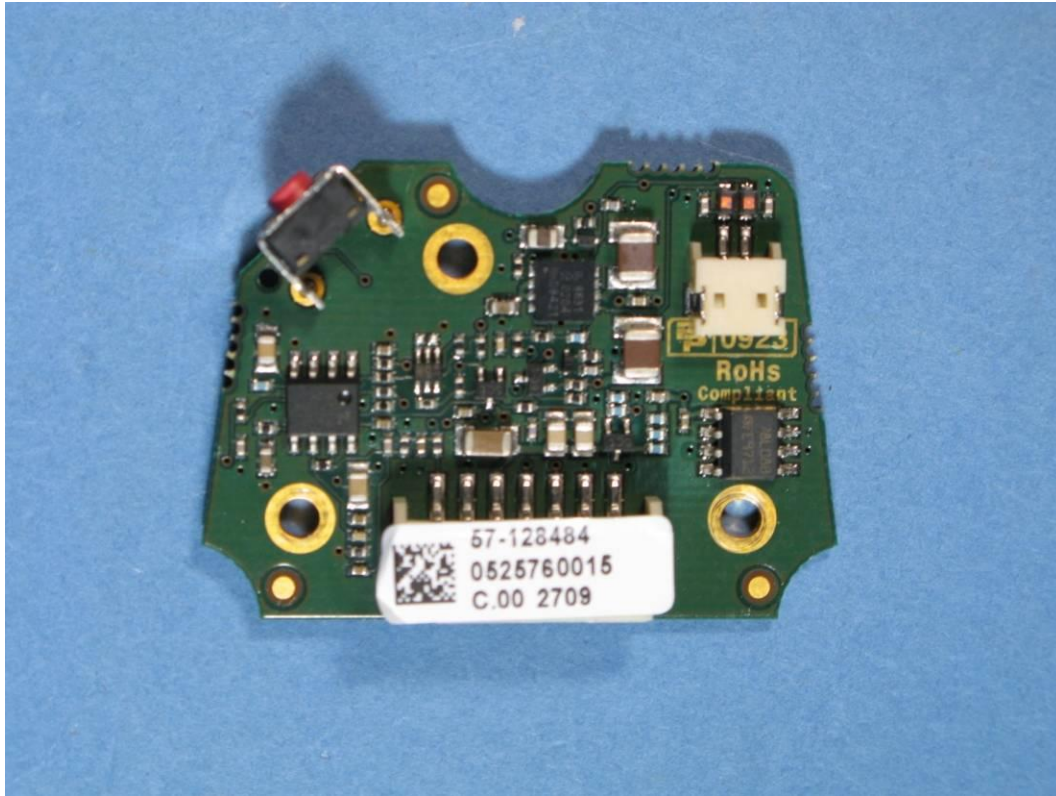
Photograph 7: - 6202, Hand Microphone, inside view



Photograph 8: - 6202, Hand Microphone, inside view



Photograph 9: - 6202, Hand Microphone PCB



Photograph 10: - 6209, Accessory connection box

