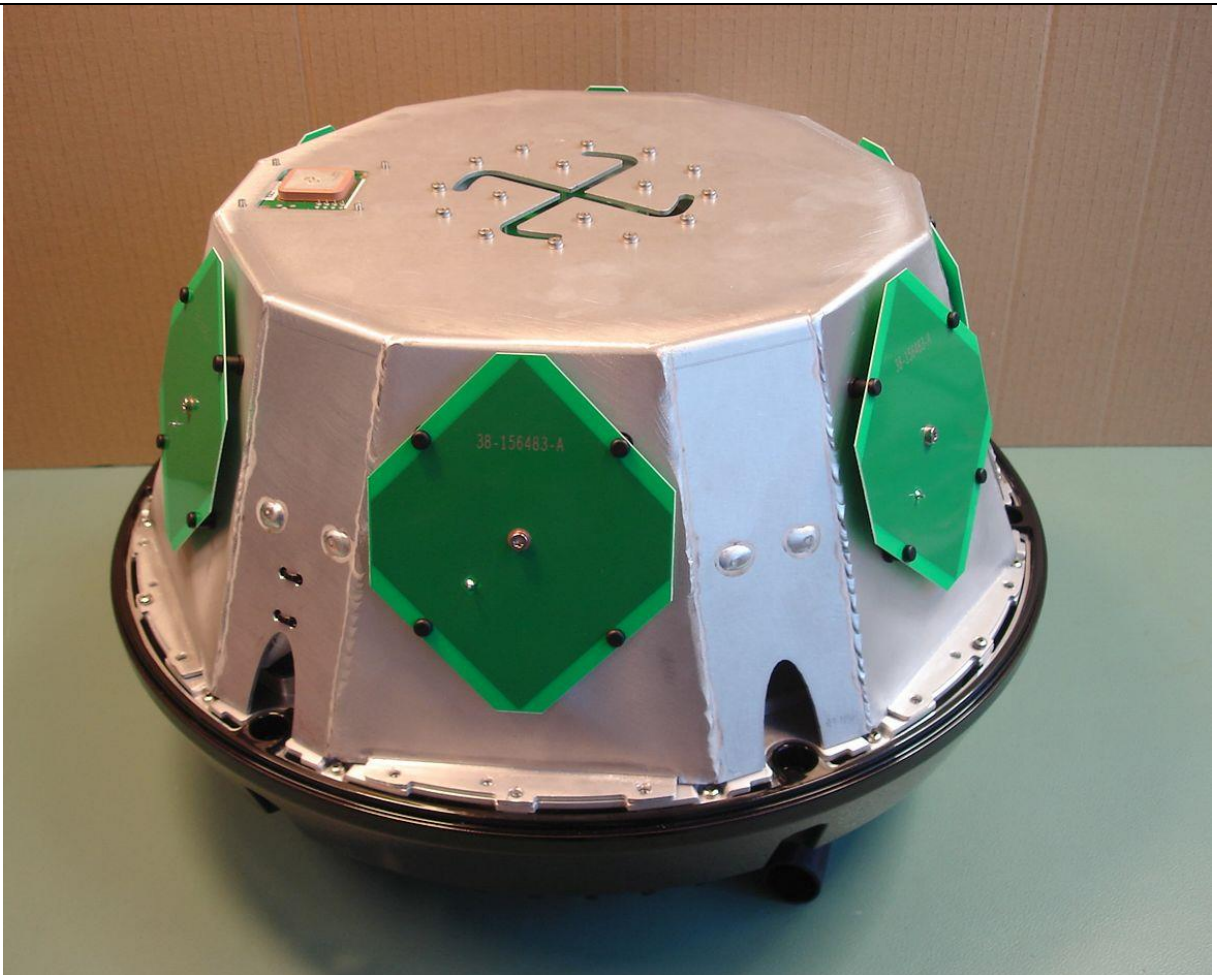


This document contains photos of the SAILOR 4352A Above Deck Unit
– a part of the SAILOR 4300 L-Band System

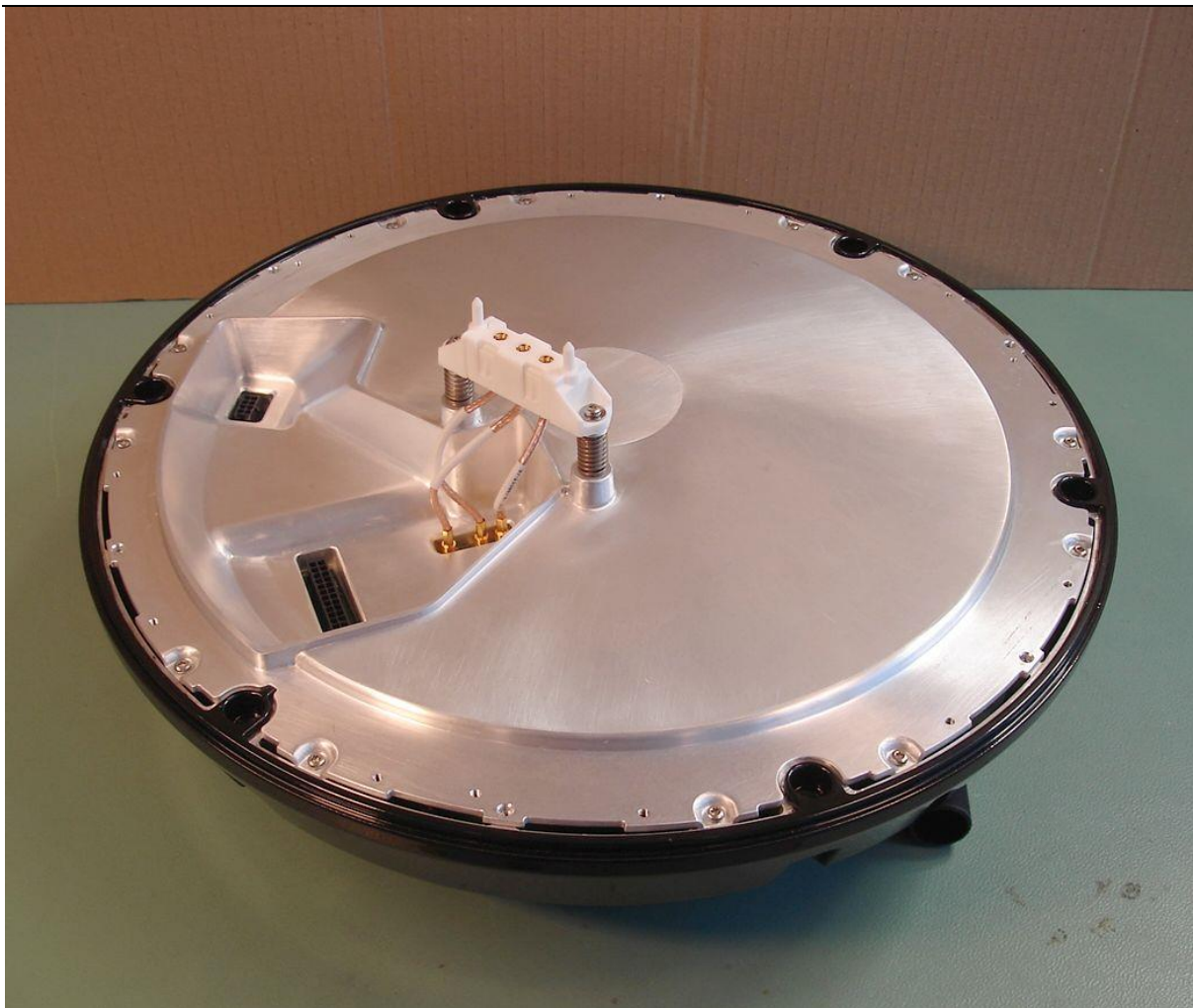
Document no: 99-160168-A



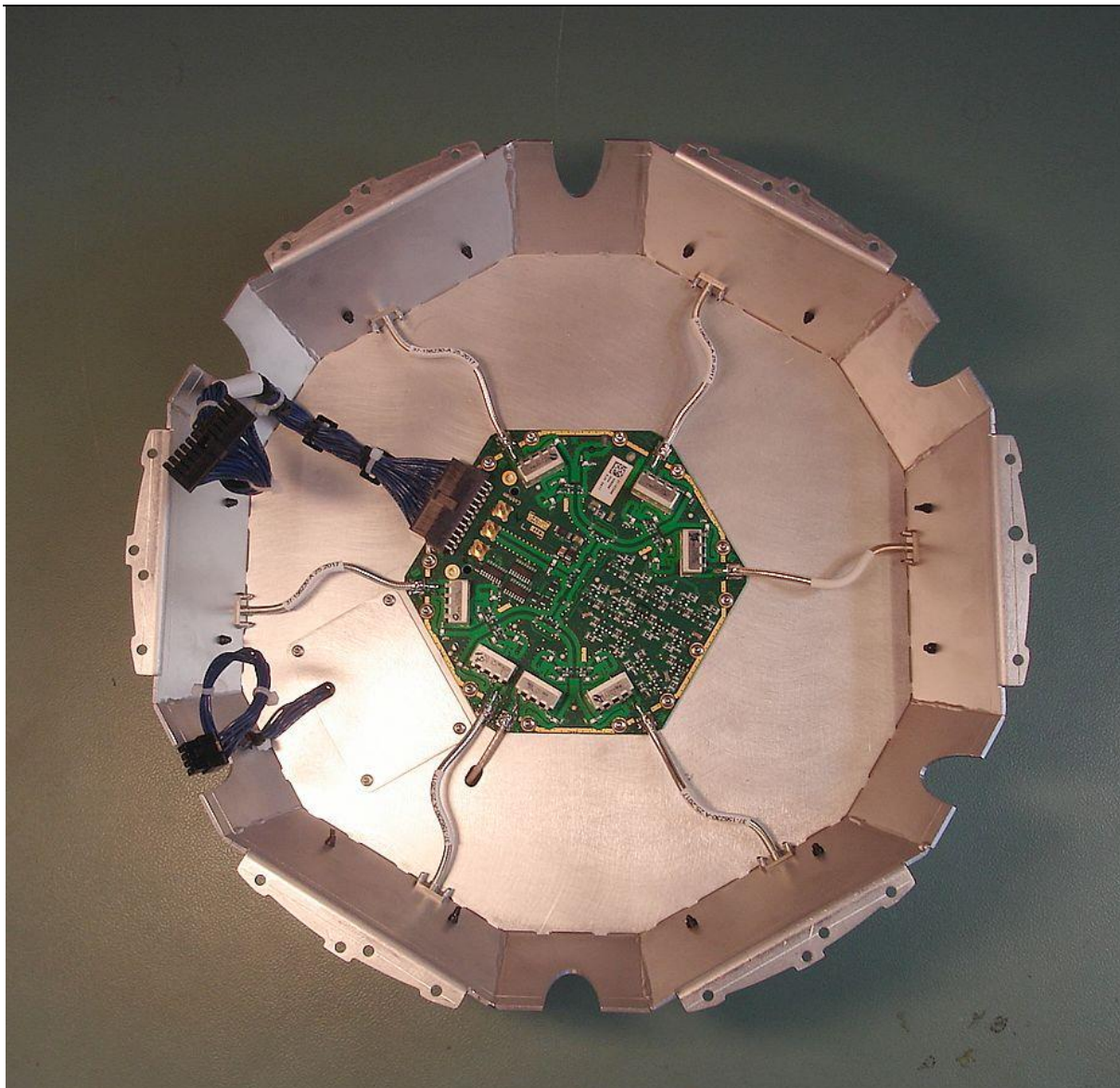
SAILOR 404352A Above Deck Unit



SAILOR 404352A ADU without dome. Antenna patch arrangement and GPS module



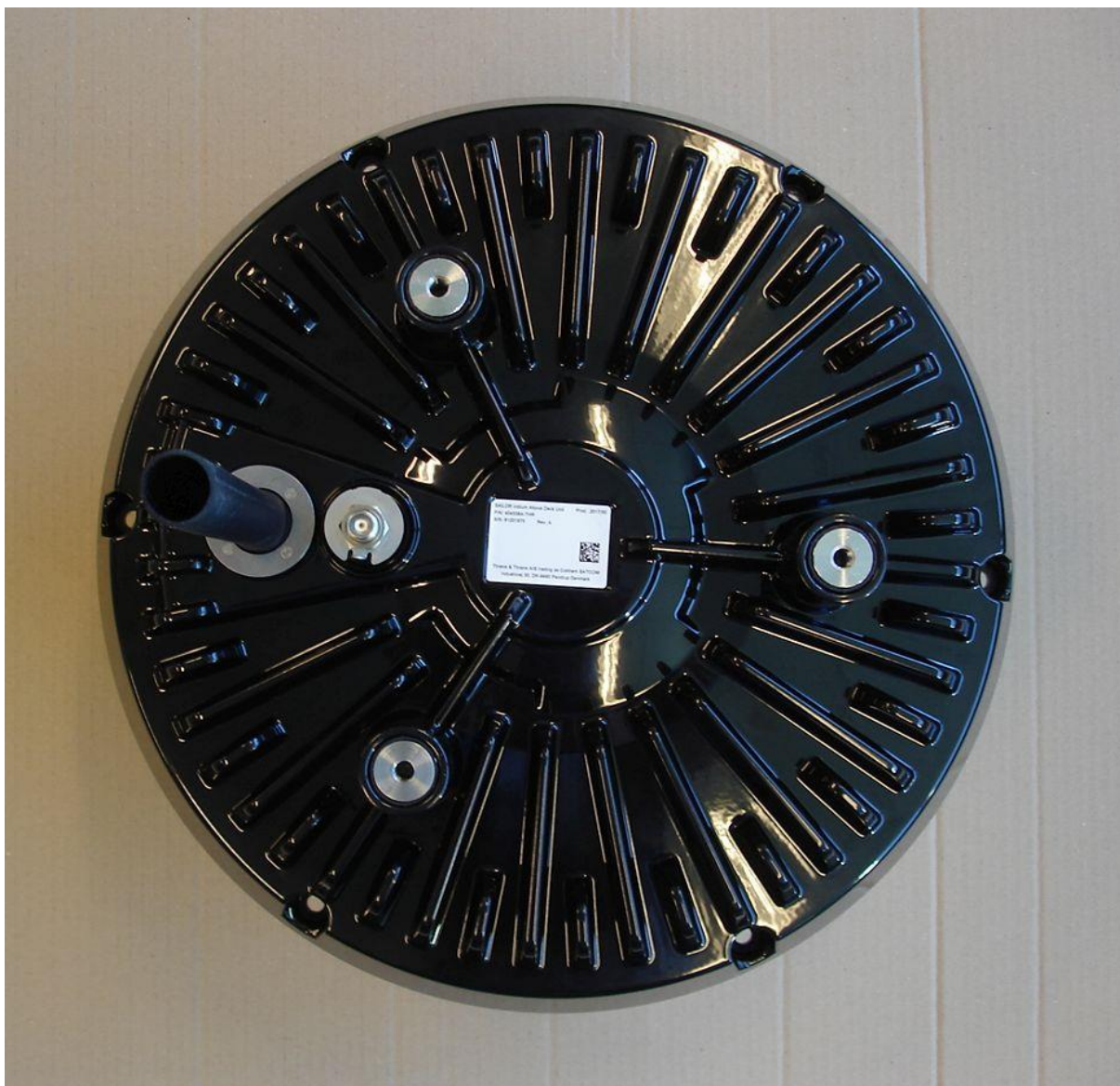
ADU ground shield



ADU Antenna ground, bottom view



ADU Basis with modules



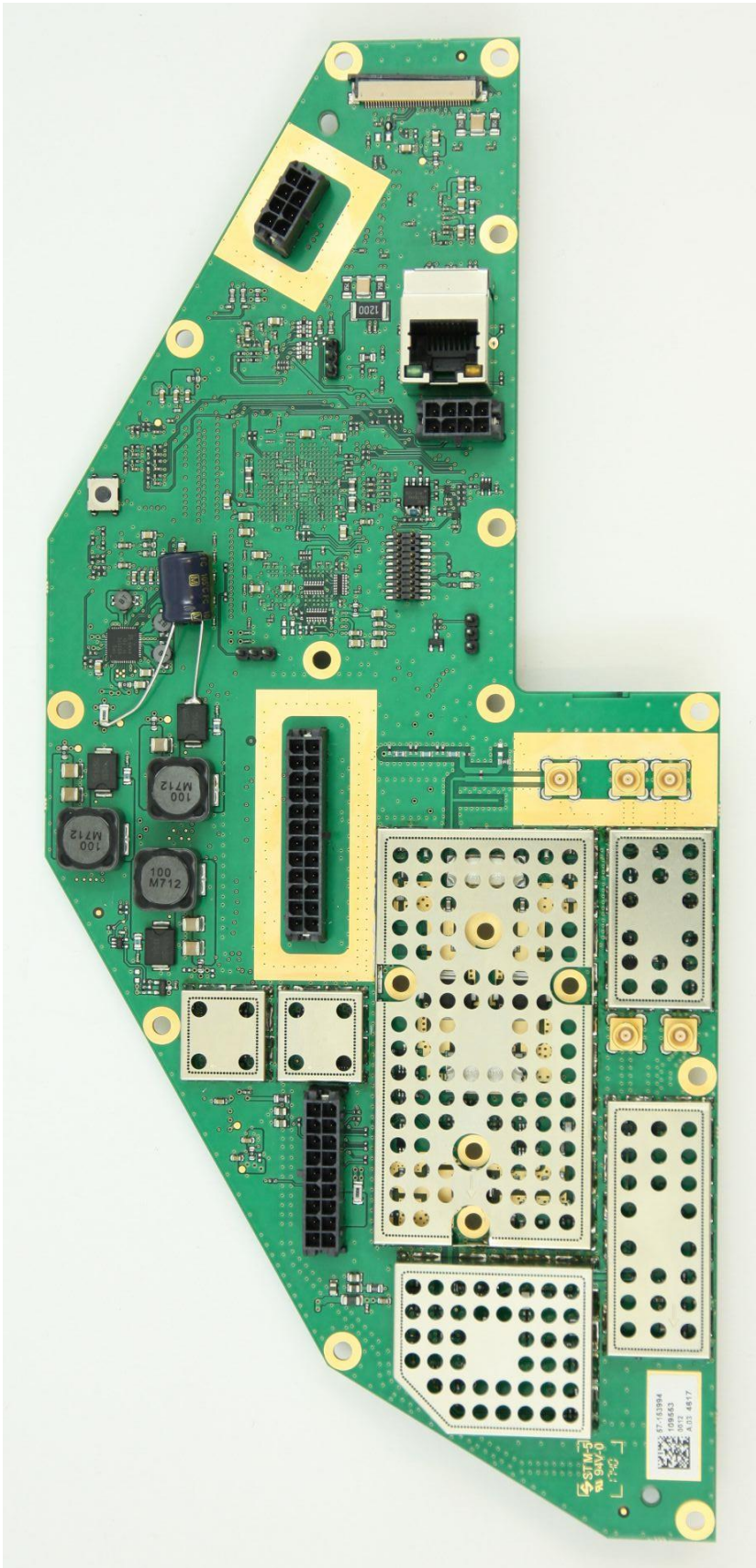
ADU Basis bottom view with type label placement



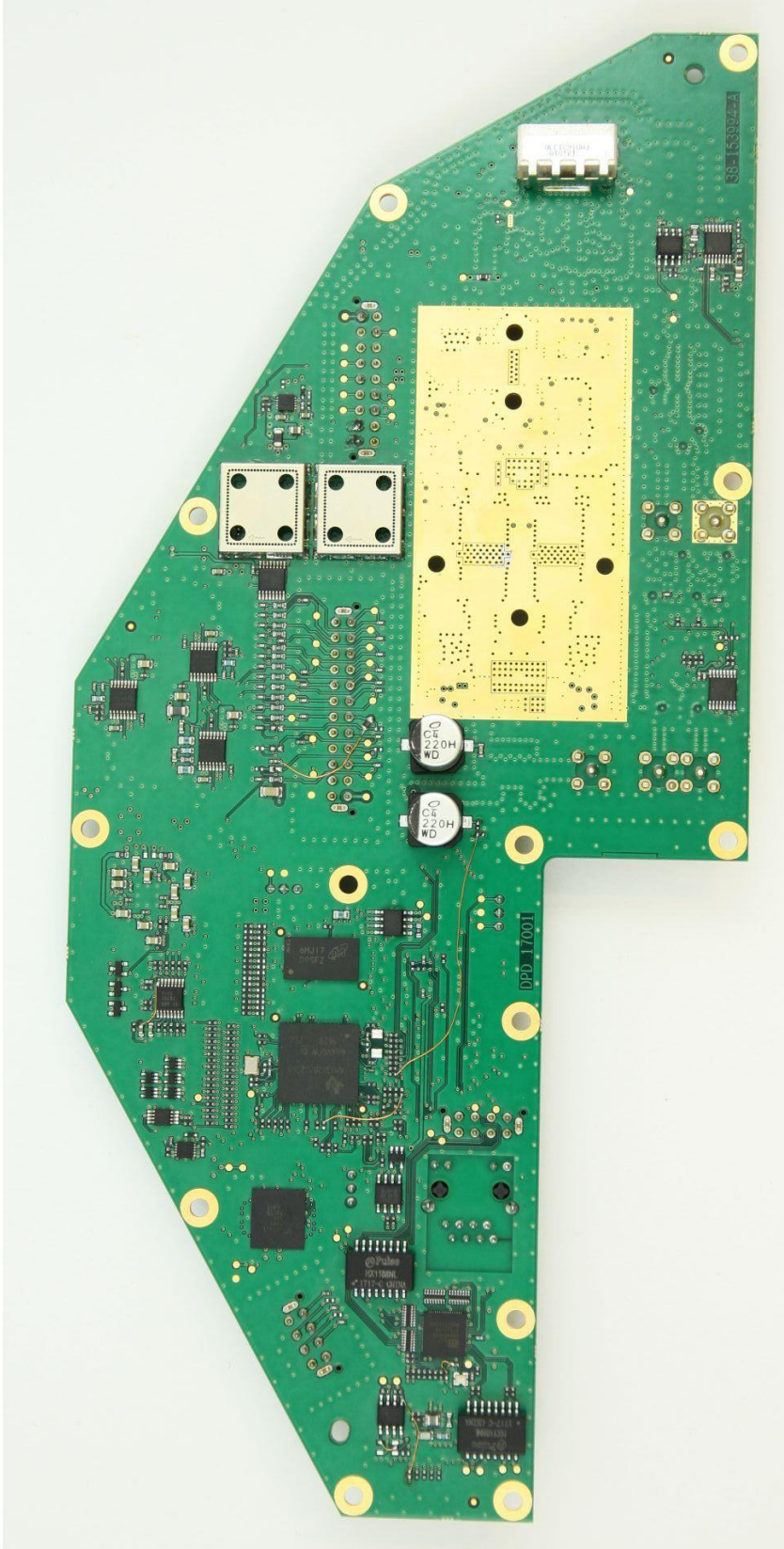
ADU BCX Radio module top view



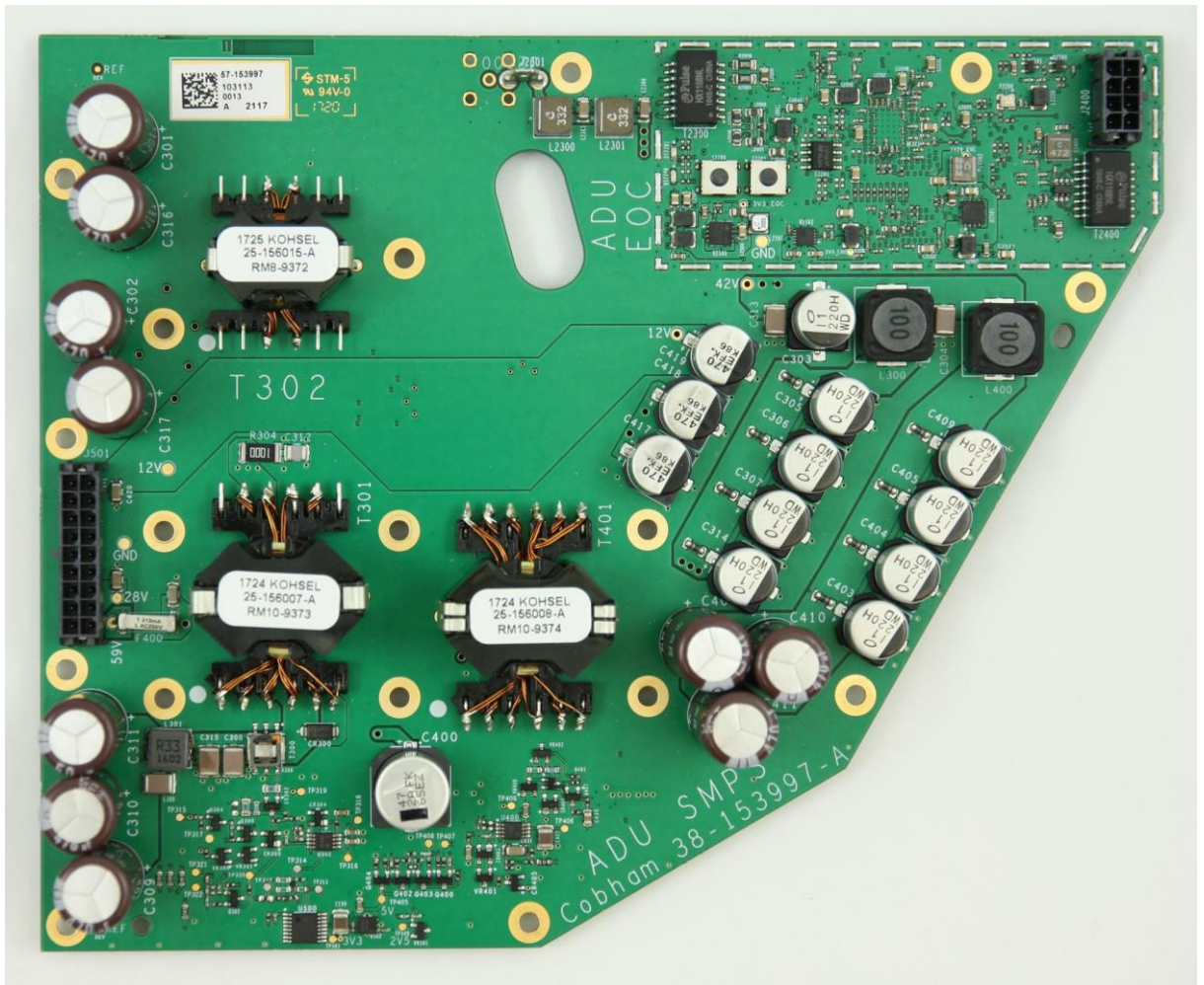
ADU BCX Radio module bottom view



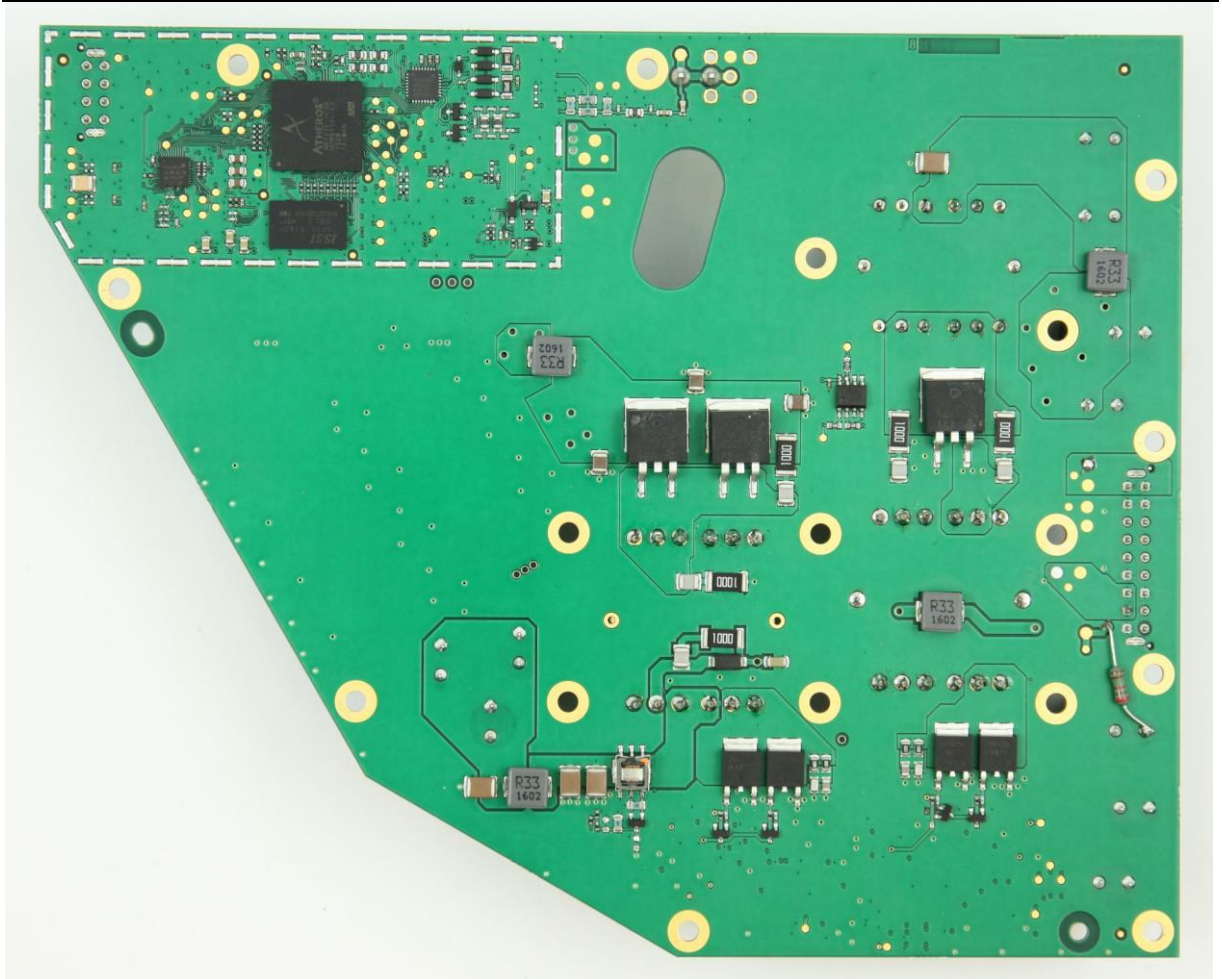
ADU Main board/ HPA module, top view



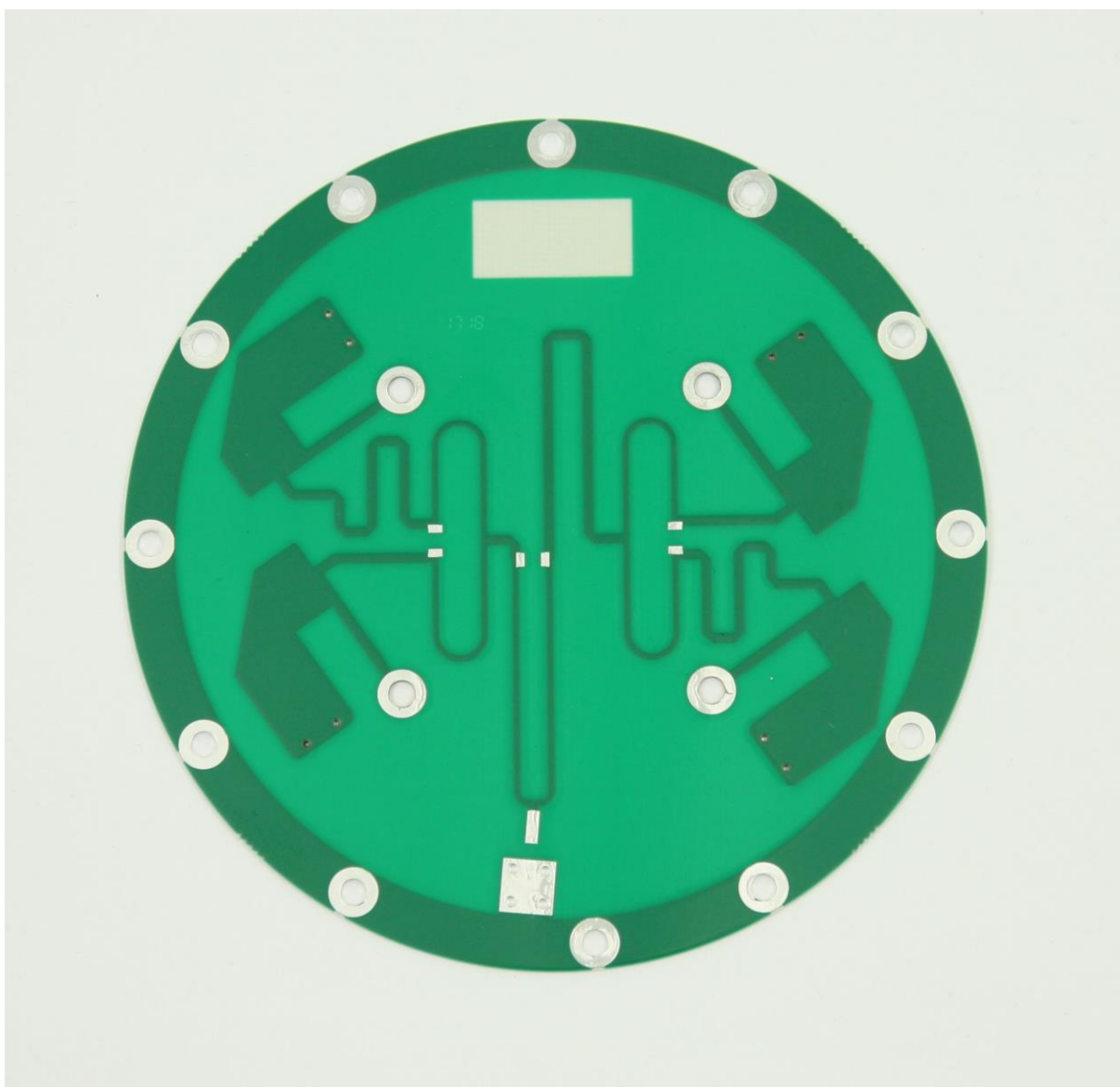
ADU Main board/ HPA module, bottom view



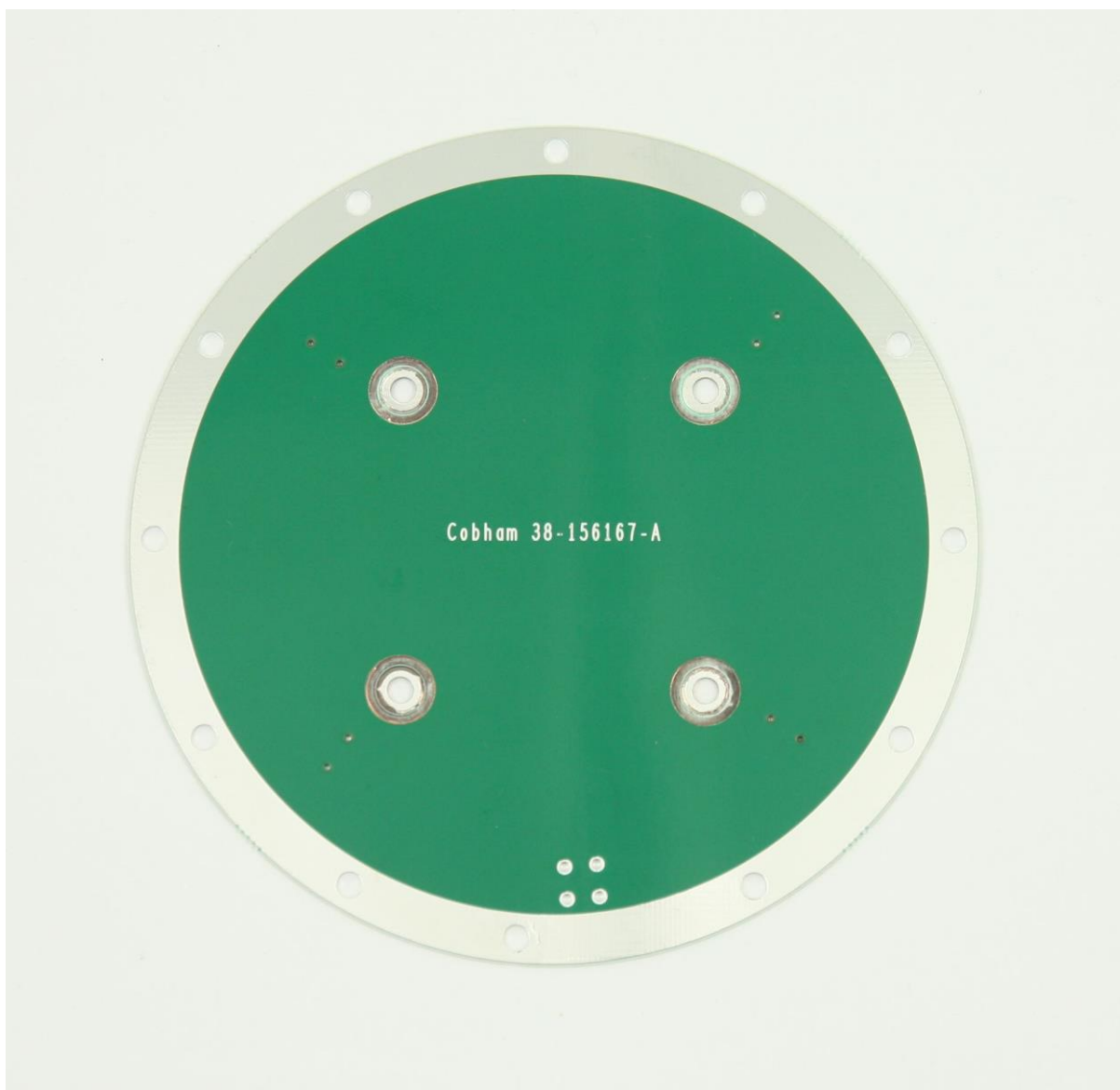
ADU SMPS/EoC module, top view



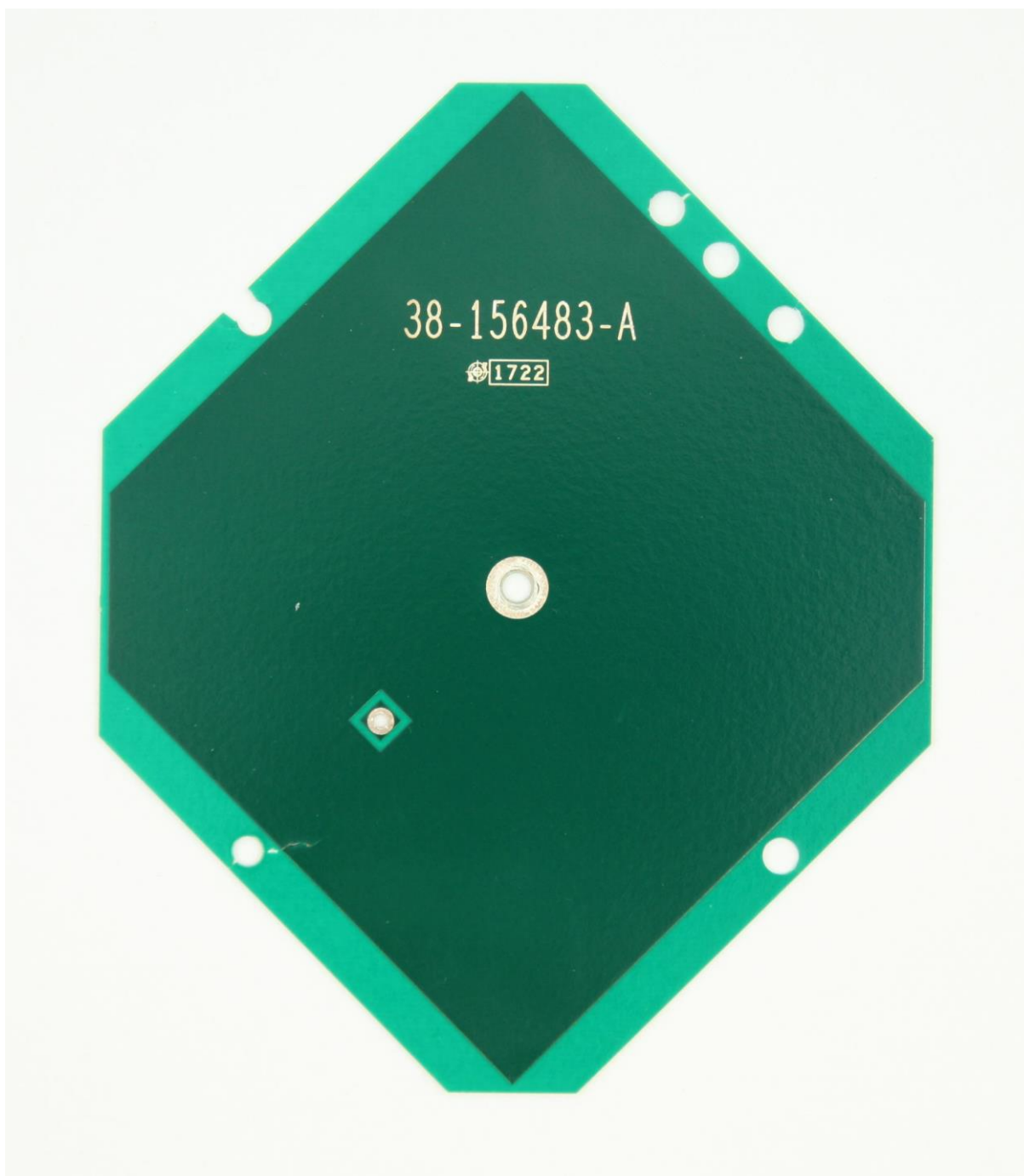
ADU SMPS/EoC module, bottom view



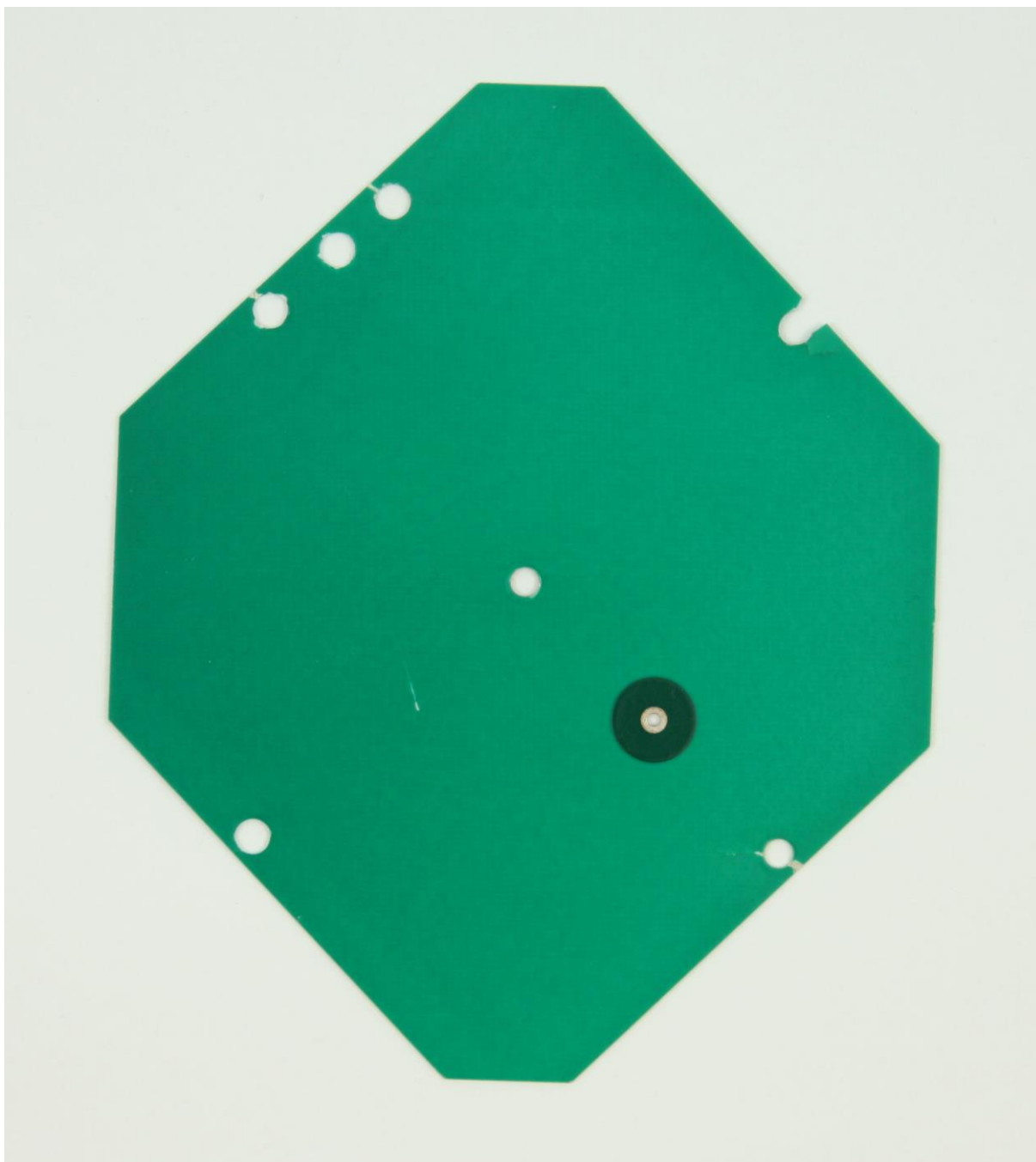
ADU Antenna top patch, top view



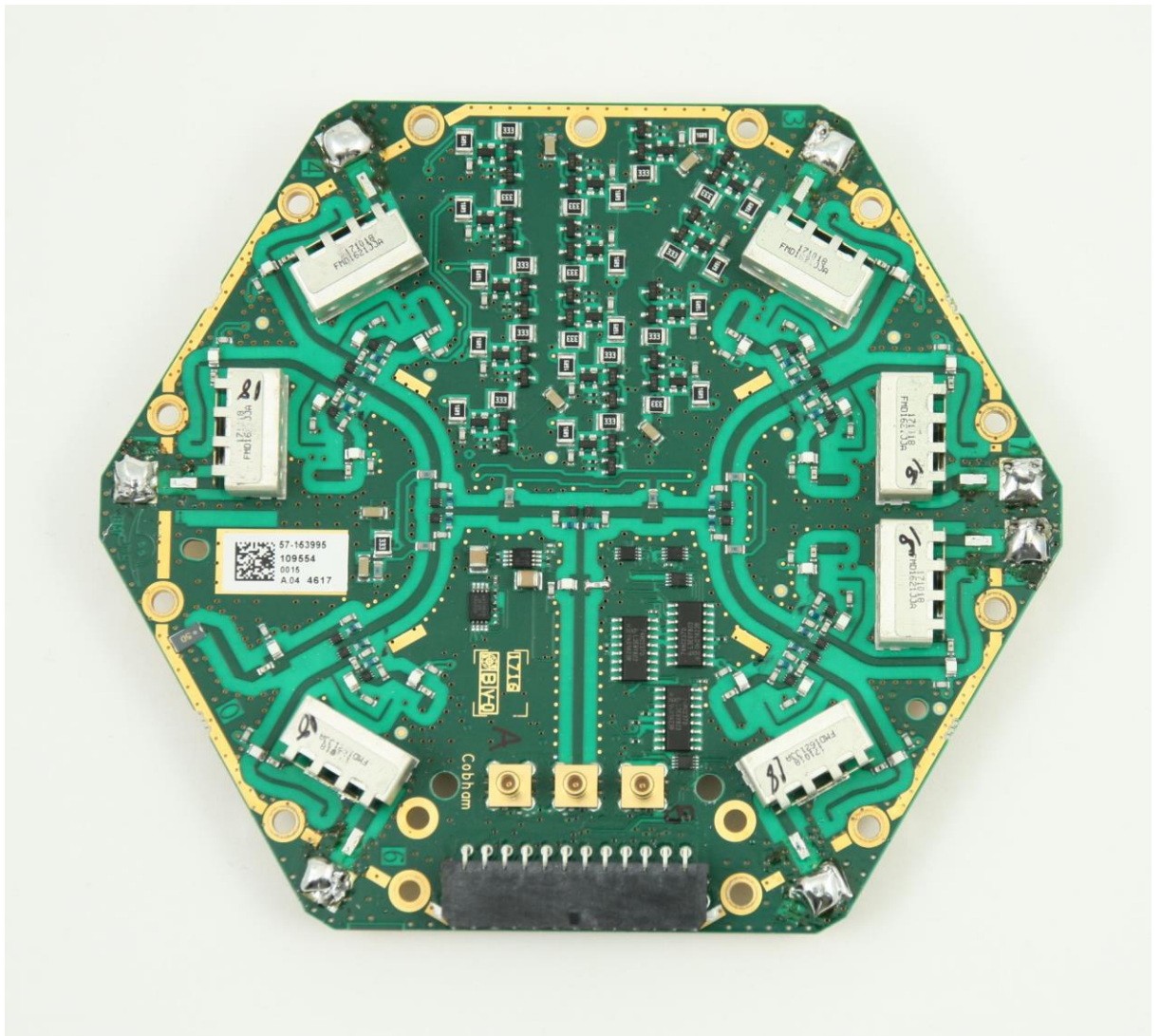
ADU Antenna top patch, bottom view



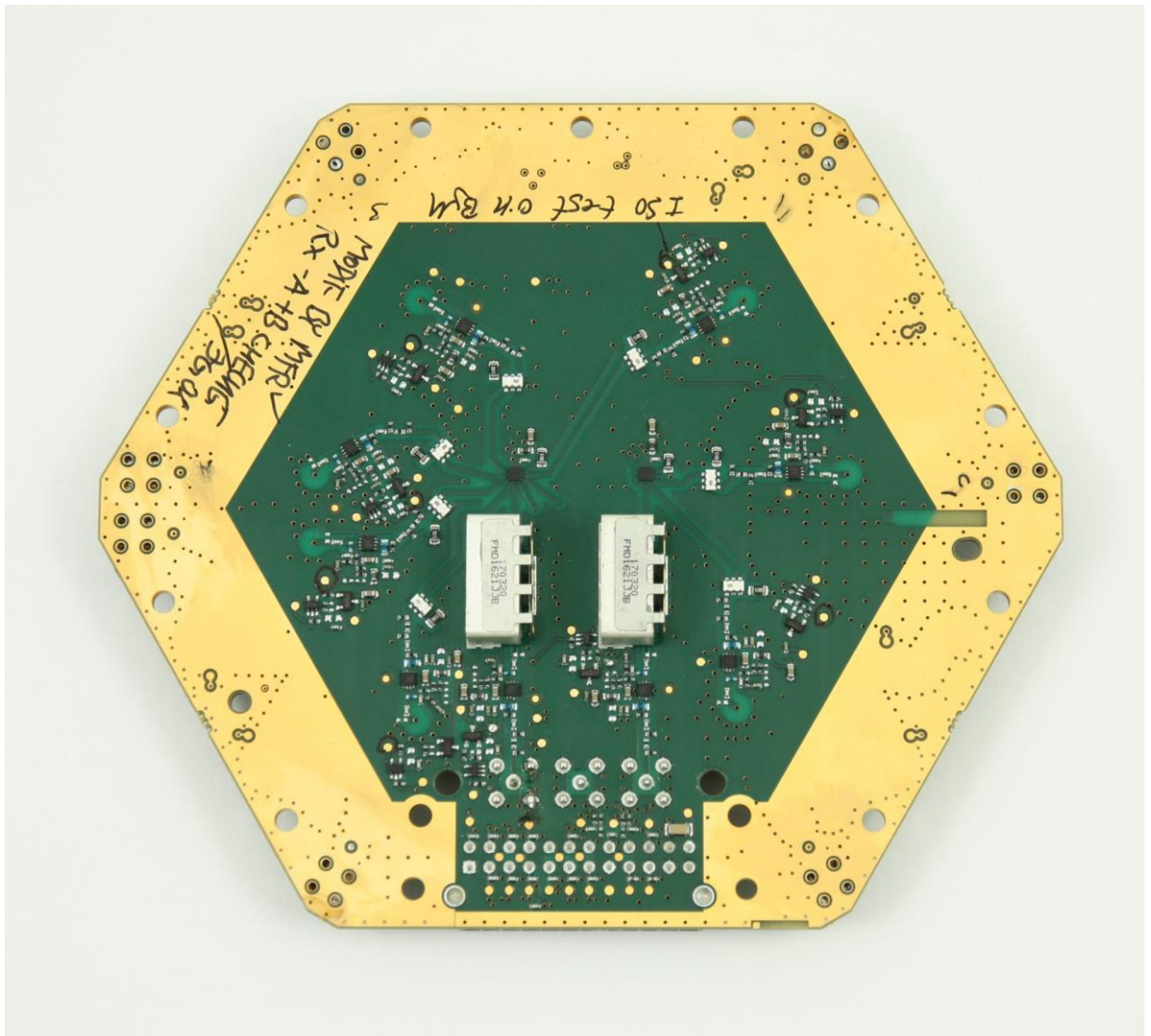
Antenna patch, top view



Antenna patch, bottom view



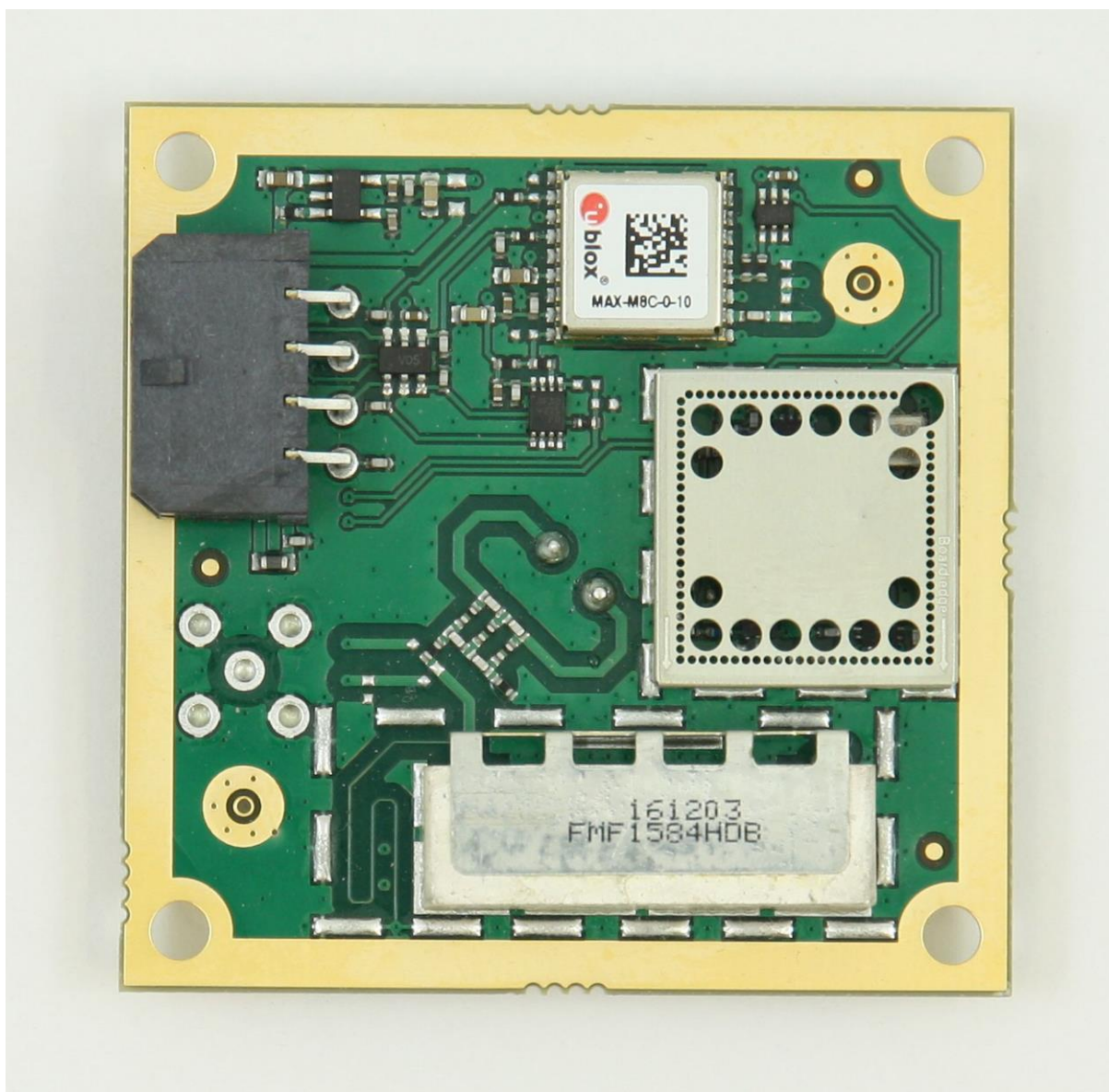
ADU TX-RX switch board, top view



ADU TX-RX switch board, bottom view



GPS module, top view



ADU GPS module, bottom view