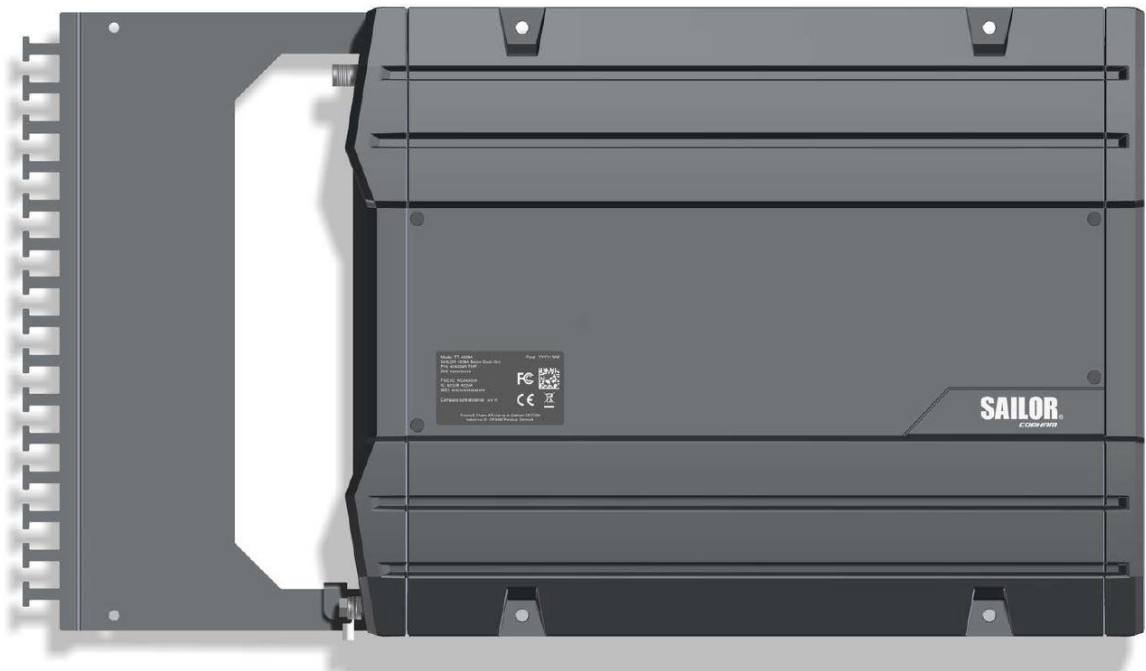


This document contains photos of the SAILOR 4338A Below Deck Unit
– a part of the SAILOR 4300 L-Band System

Document no: 99-160170-A



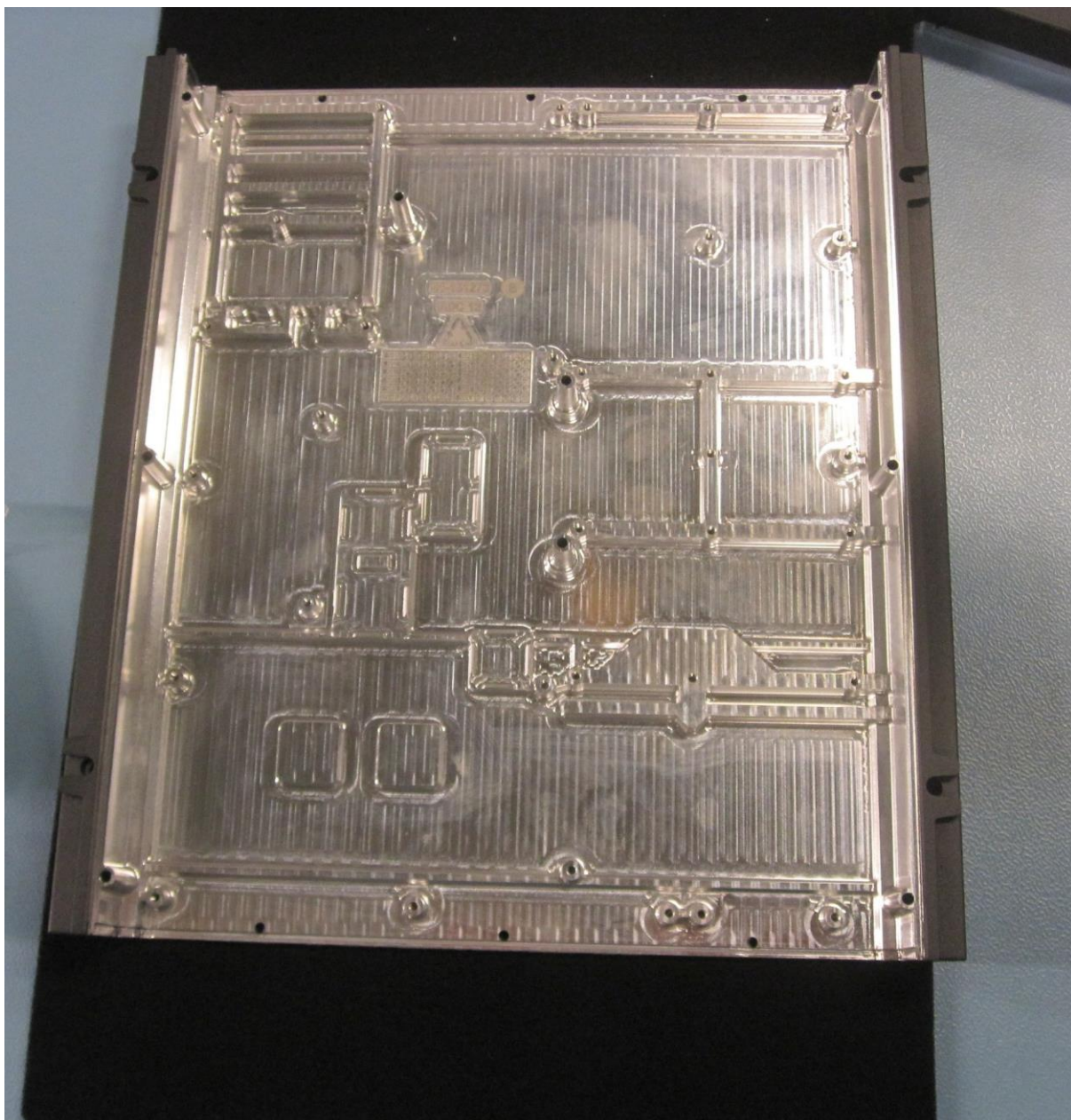
SAILOR 404338A Below Deck Unit



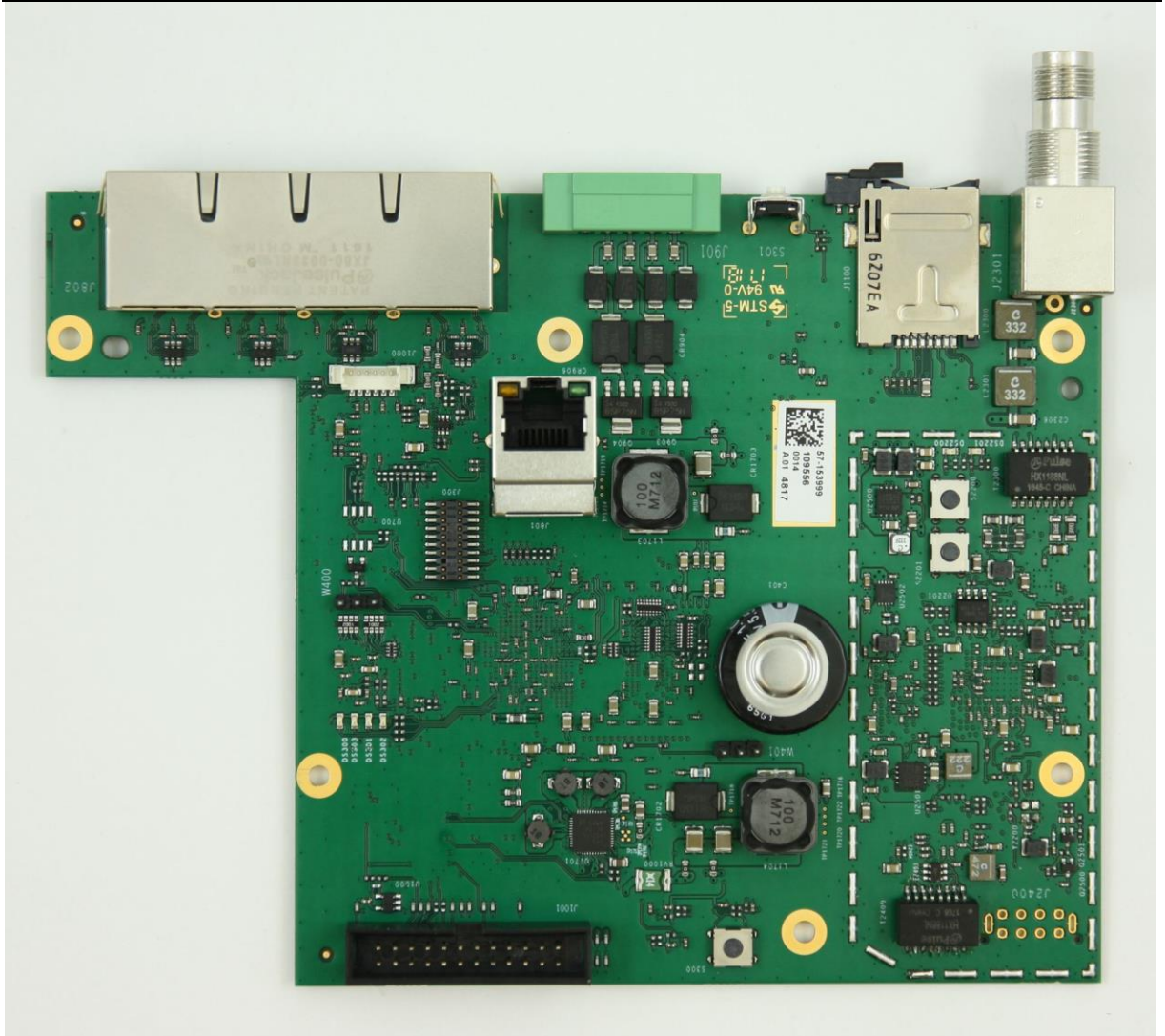
SAILOR 404338A Below Deck Unit and type label placement



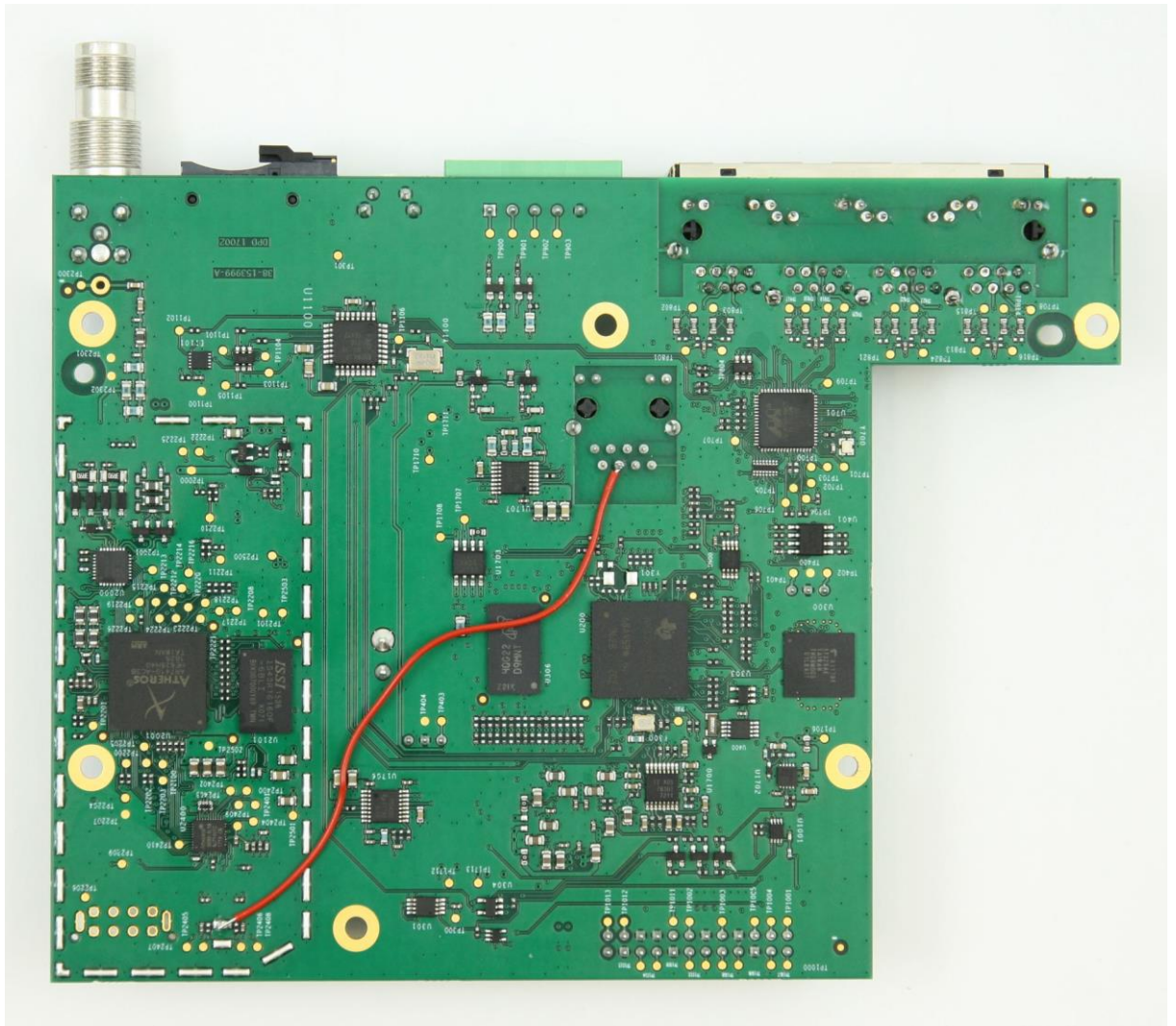
BDU basis without lid



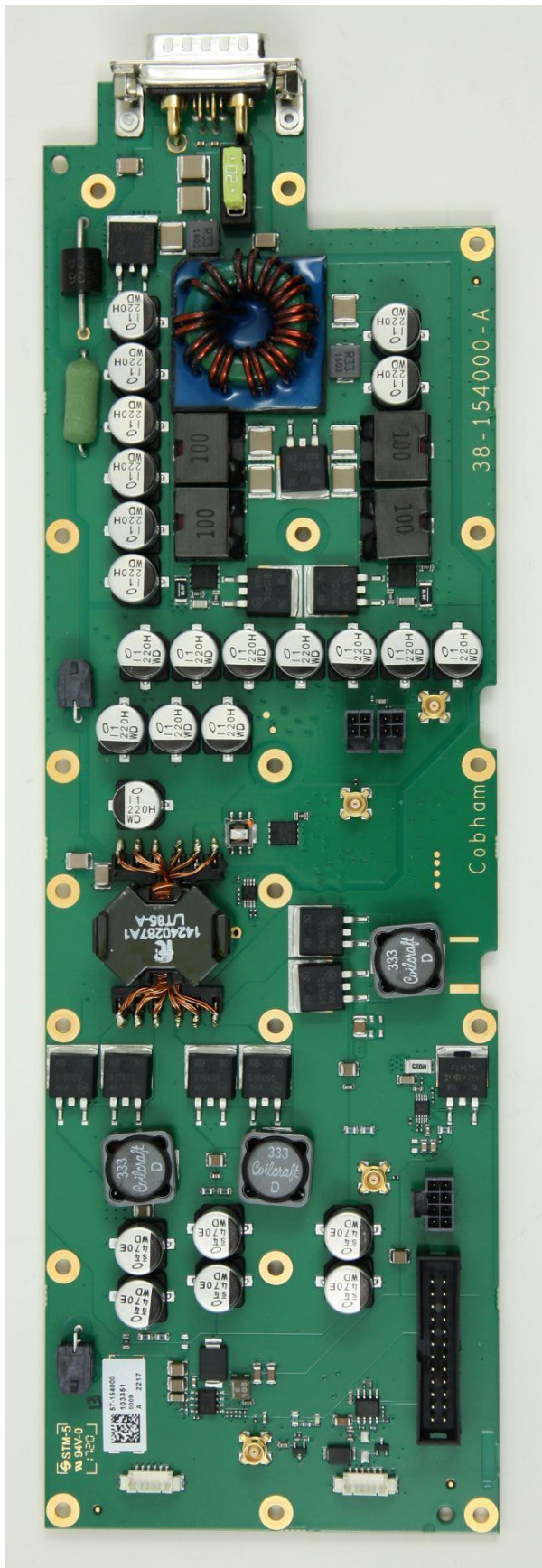
BDU basis without modules

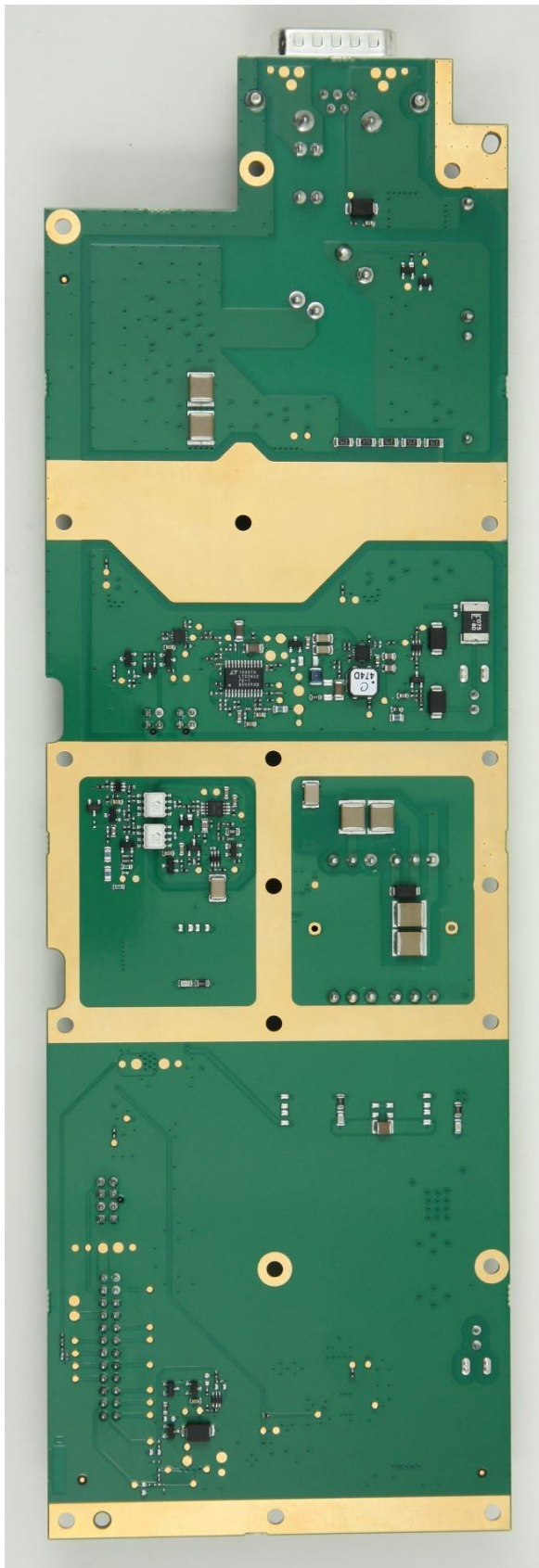


BDU Main Board/EoC module, top view

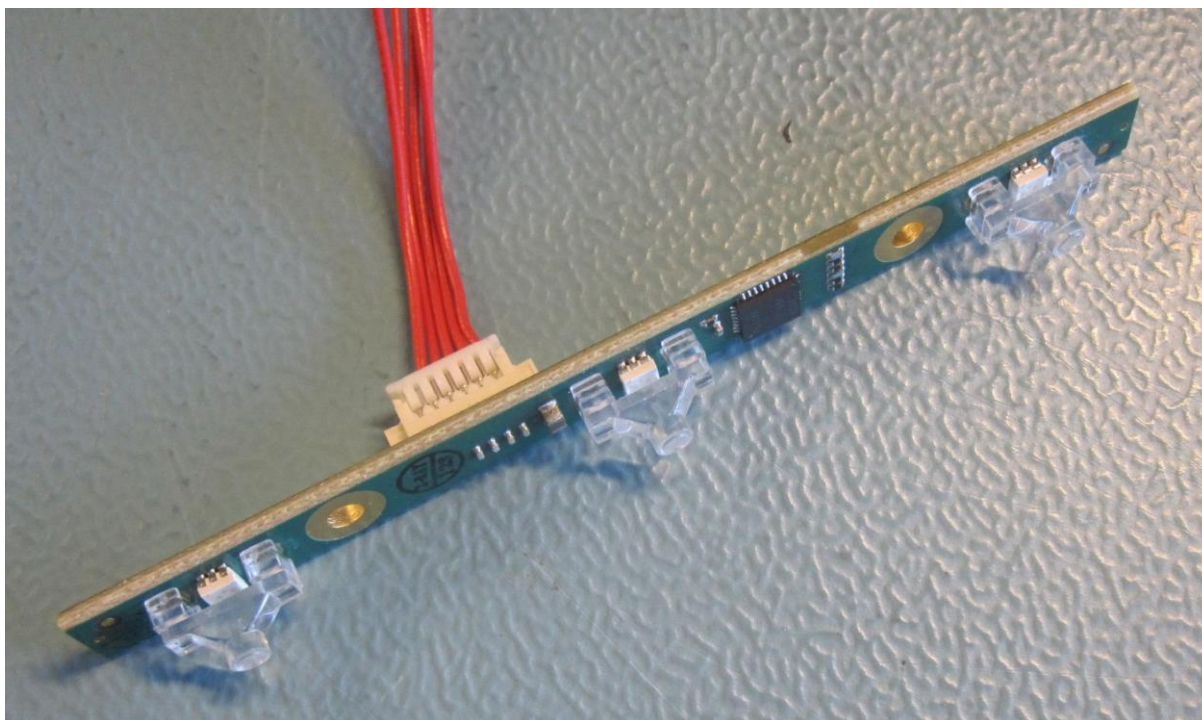


BDU Main Board/EoC module, bottom view





BDU SMPS module, bottom view



LED module, front view



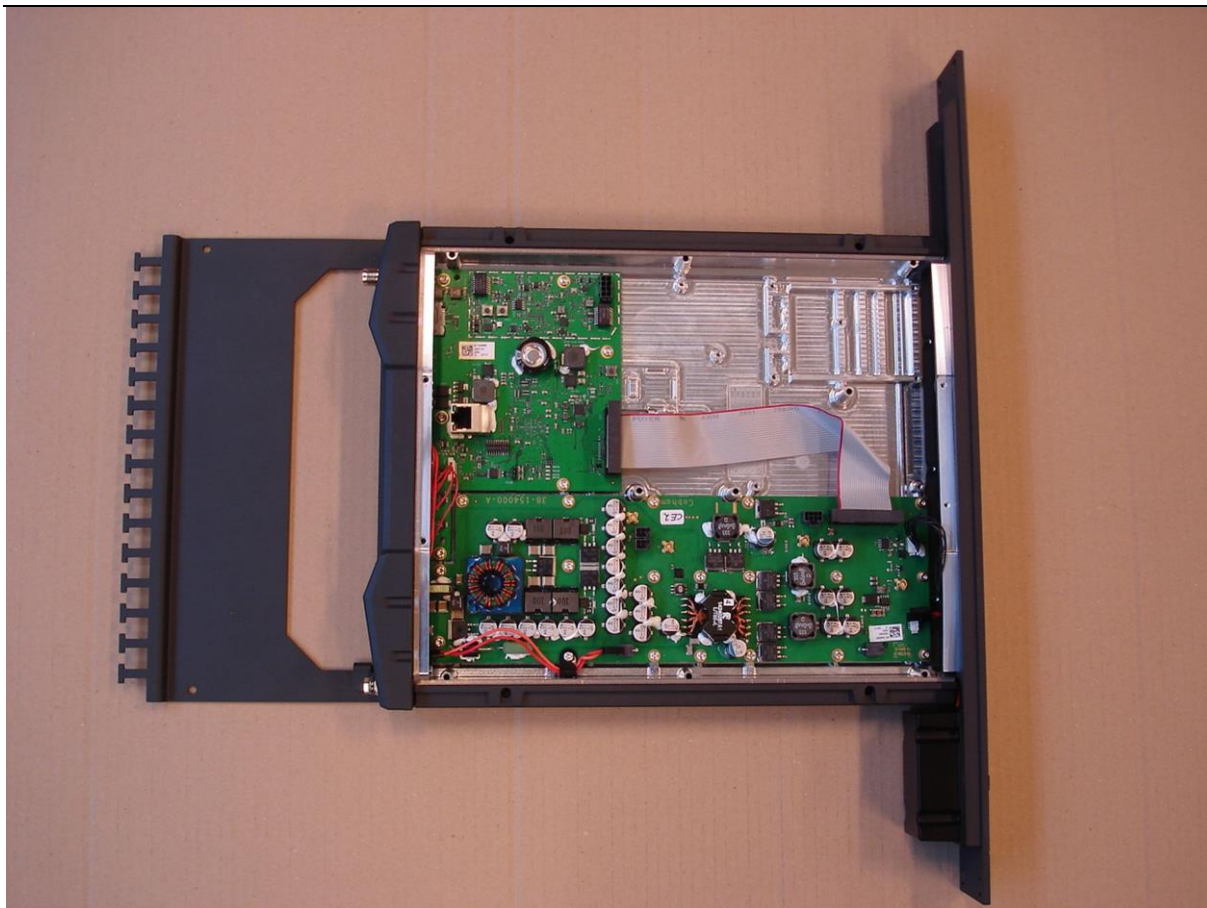
LED module, rear view



BDU Connector view



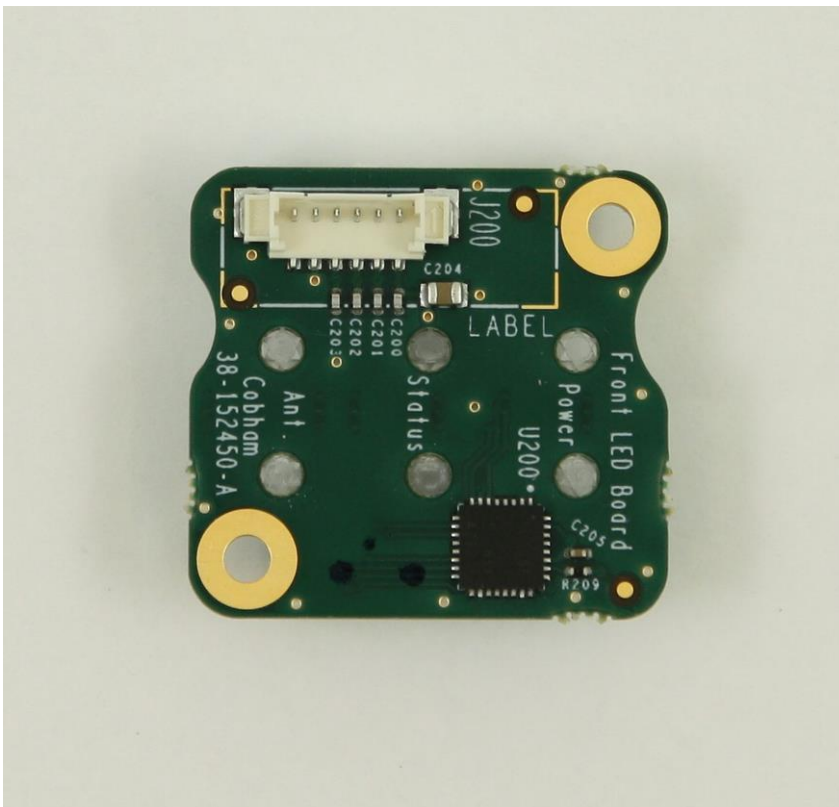
BDU rack mount, top view



BDU rack mount, lid off



LED rack mount, front view



LED rack mount, bottom view