



**405014A/405035A/405040A**

Aero

FCC: ROJ-AVIATOR700 / IC: 6200B-AVIATOR700

Internal Pictures

Document number: 99-162415-A  
Date: 4 June 2018  
Author: Morten Becker Saul

Copyright© Thrane & Thrane A/S trading as Cobham SATCOM  
Lundtoftegaardsvej 93D, DK-2800 Kgs. Lyngby, Denmark

ALL RIGHTS RESERVED

Filename: ROJ-AVIATOR700\_5013A external Pictures 99-xxxxx-A

<b>REVISION HISTORY</b>				
Rev.	Date	App.	Section	Description / Remarks
A	04-06-2018		All	Original

© Thrane & Thrane A/S trading as Cobham SATCOM

**This Document and any other appended documents and drawings are of © copyright to Thrane & Thrane A/S. It contains proprietary information which is disclosed for information purposes only. The contents of this document shall not in whole or in part be used for any other purpose; be disclosed to any member of the recipients organisation not having a need to know such information or to any third party, individual, organisation or Government; be stored in any retrieval system or be produced or transmitted in any form by photocopying or any optical, mechanical or other means without prior permission of Thrane & Thrane A/S.**

## Table of Contents

Table of Contents .....	ii
1. Scope and Purpose .....	1
1.1. Related Documents .....	1
1.2. Abbreviations .....	1
2. 405014A HPA .....	2
3. 405035A SDU .....	9
4. 405040A SBU .....	16

## **1. Scope and Purpose**

This document contains internal pictures of all units used in FCC: ROJ-AVIATOR700 / IC: 6200B-AVIATOR700.

### **1.1. Related Documents**

Non

### **1.2. Abbreviations**

DLNA	Duplexer Low Noise Amplifier
HPA	High Power Amplifier
SBU	Satellite BGAN Unit
SDU	Satellite Data Unit
TBD	To Be Defined
TBC	To Be Continued

2. 405014A HPA

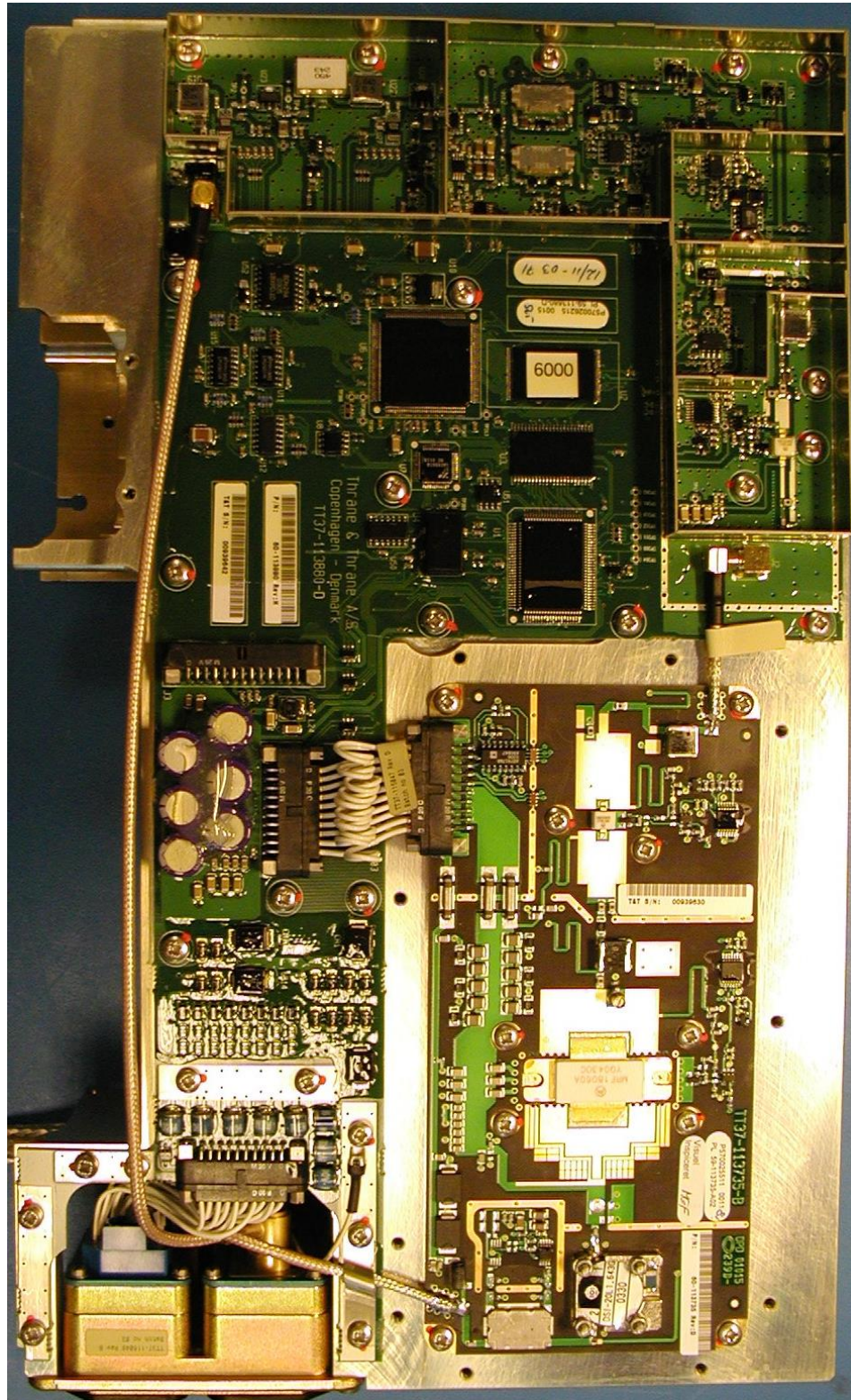


Figure 1. 5014A HPA Left:93-113880 Right:93-113735

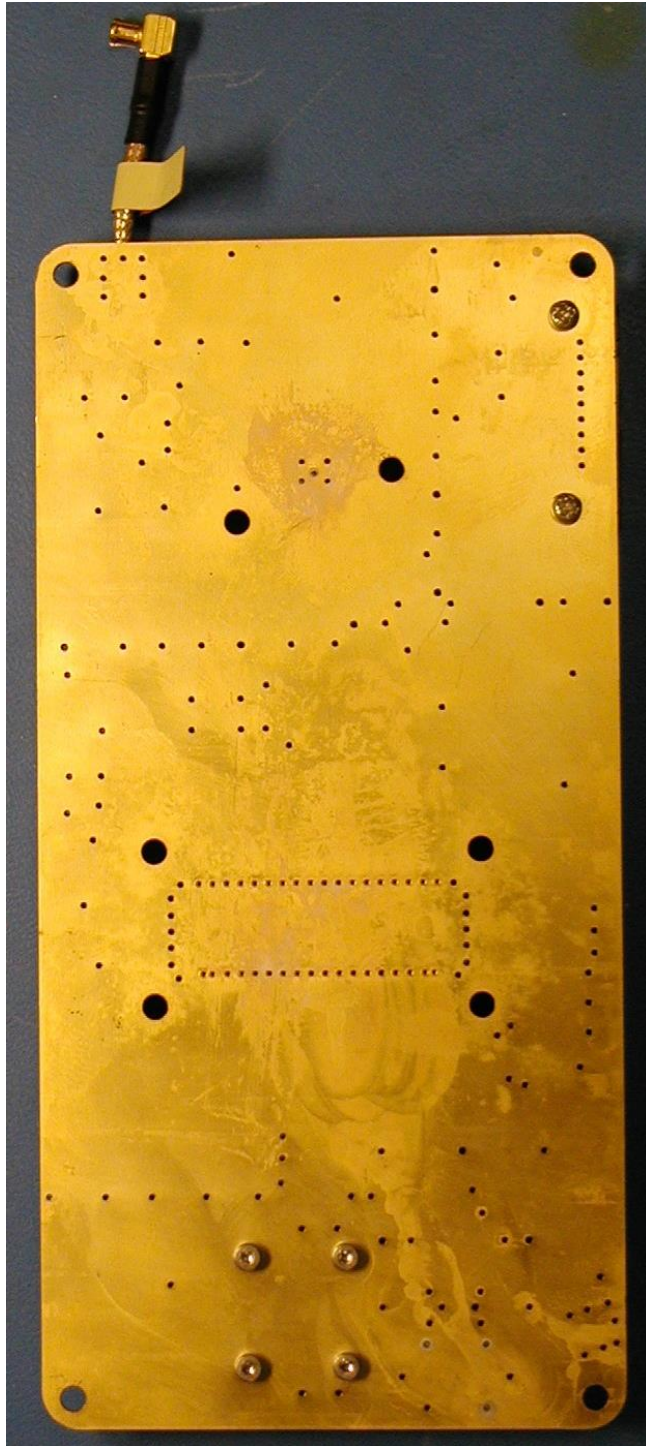


Figure 2 93-113735

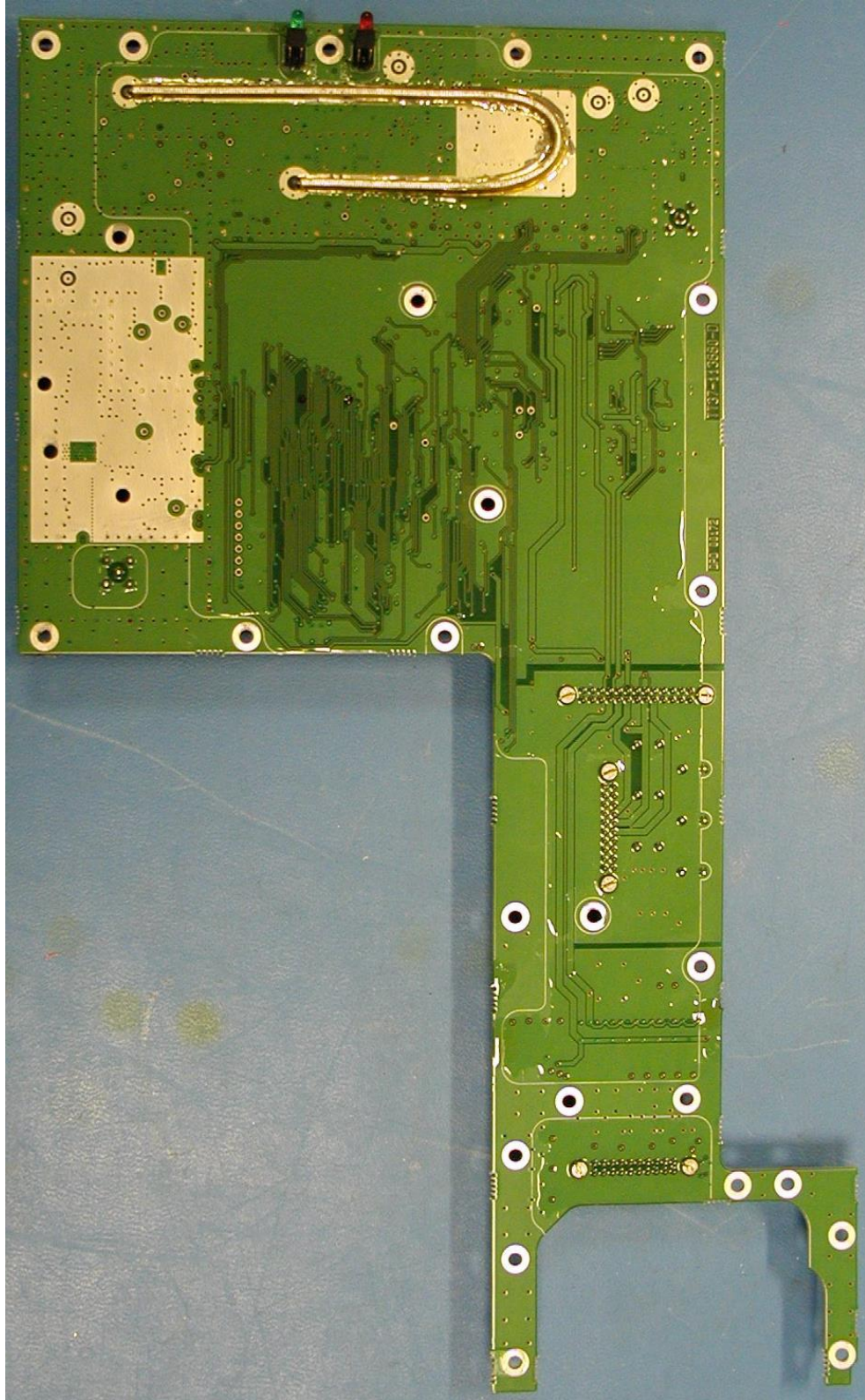


Figure 3. 93-113880

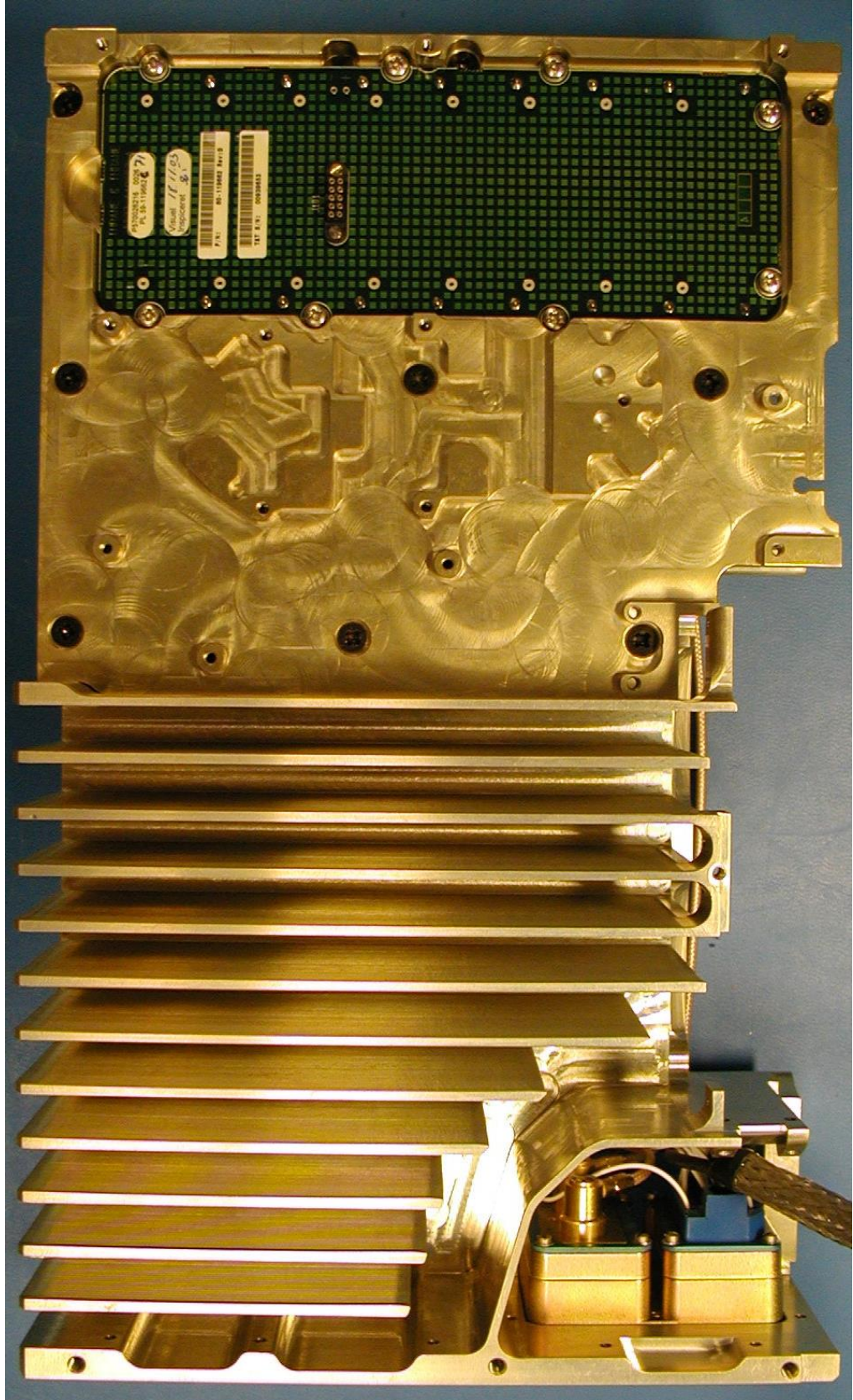


Figure 4. 5014A HPA: 93-119662



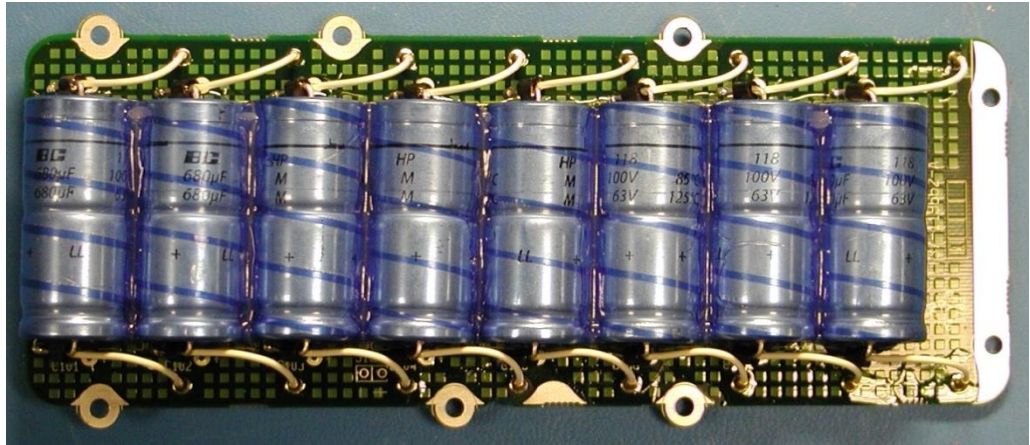


Figure 5. 93-119662

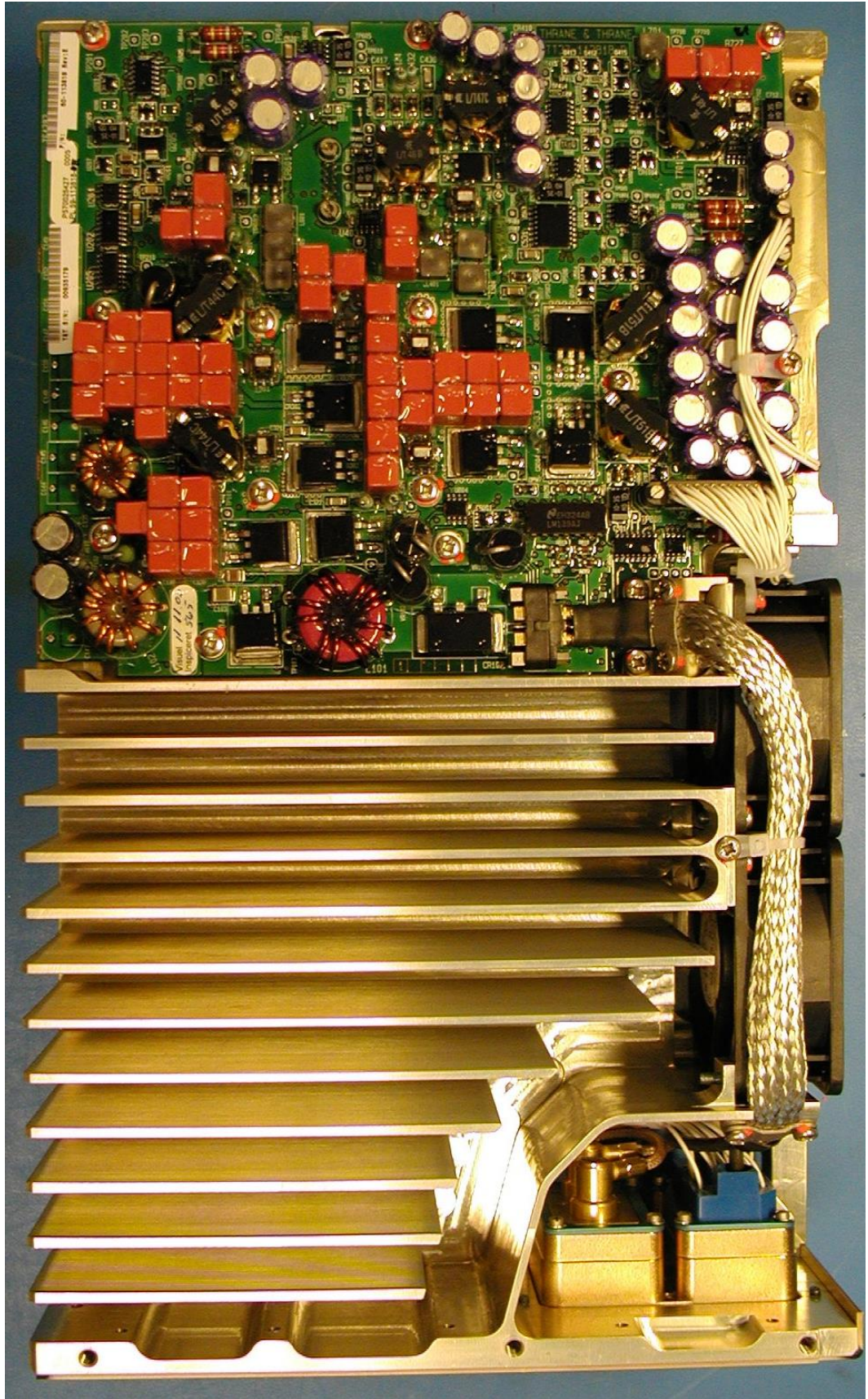


Figure 6. 5014A HPA: 93-113818

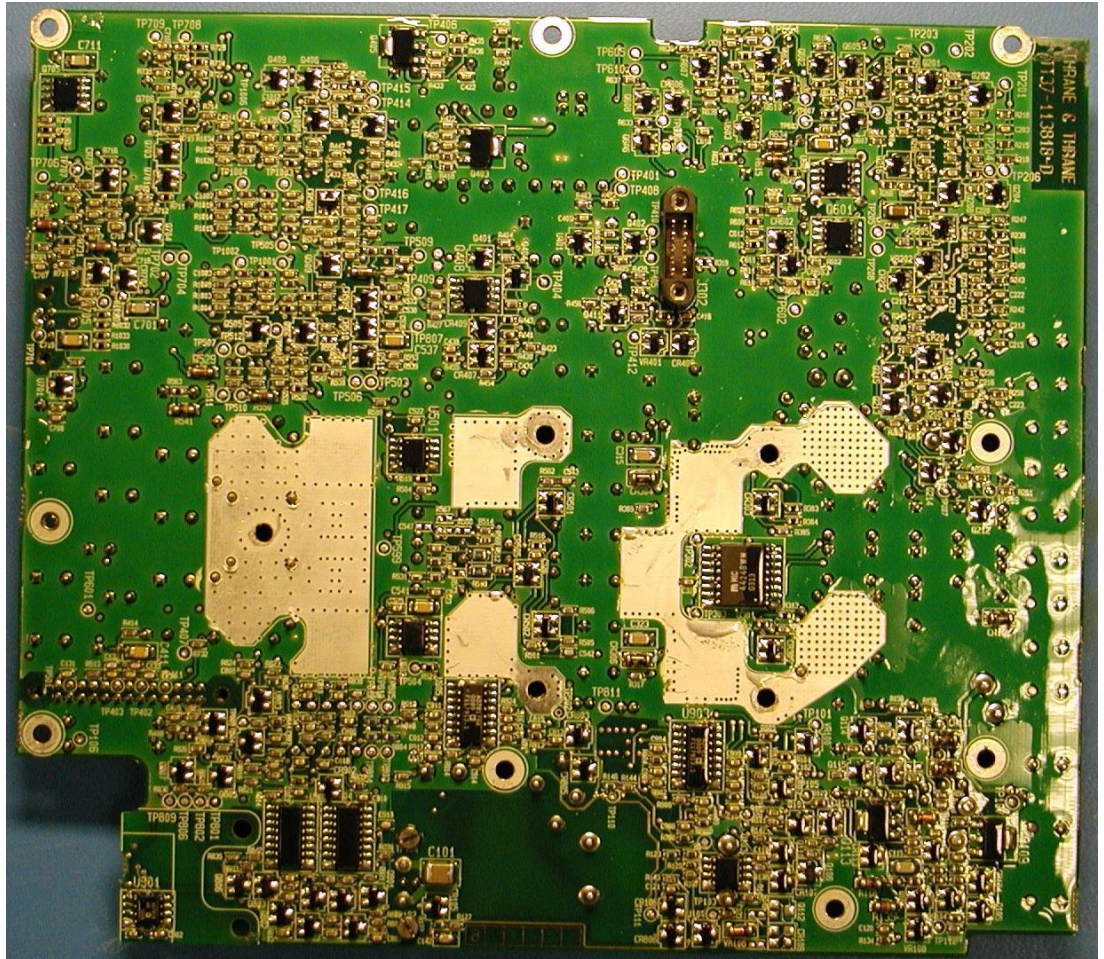


Figure 7. 93-113818

3. 405035A SDU

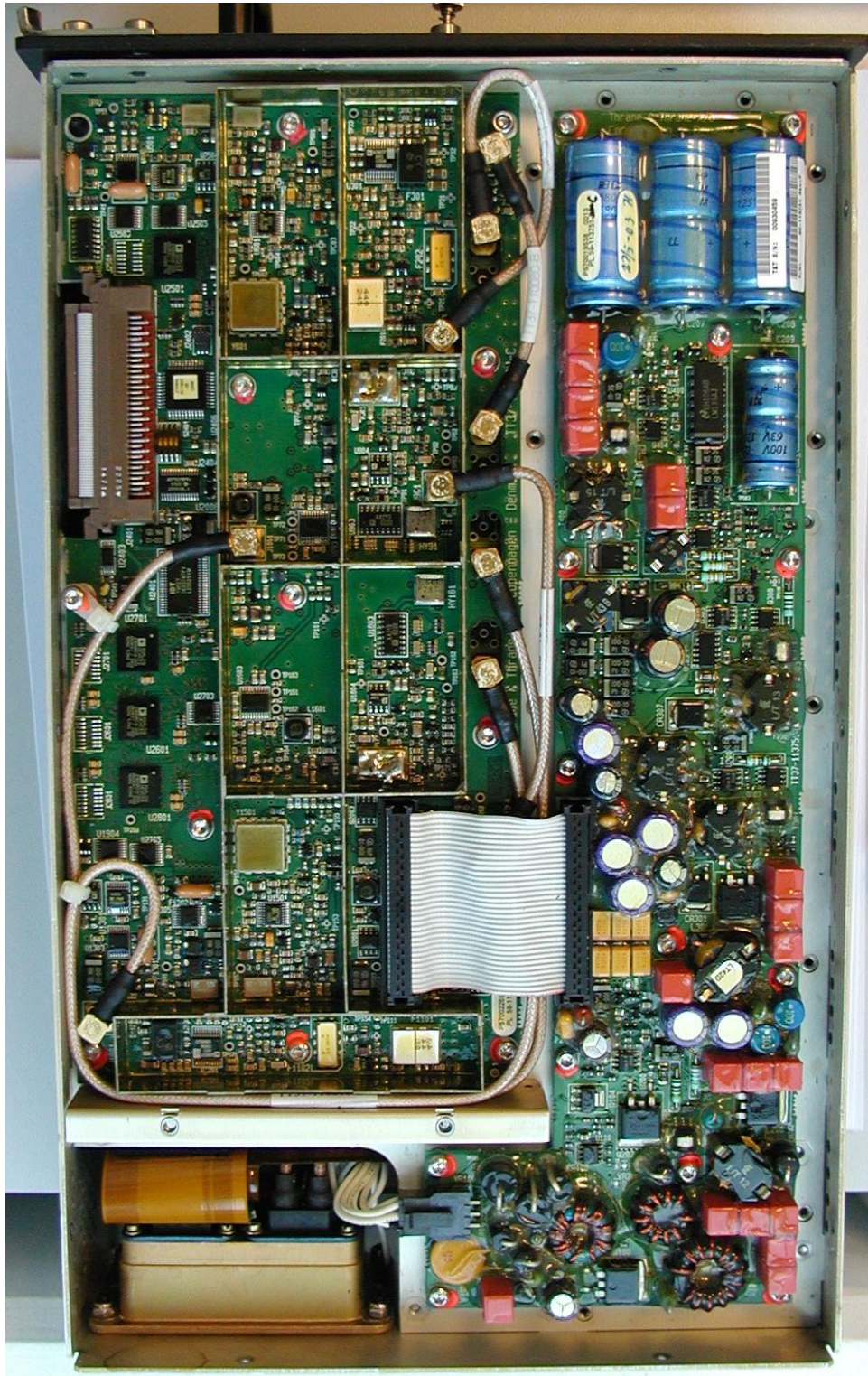


Figure 8. 405035A SDU Right:93-113892. Left:TT93-113751

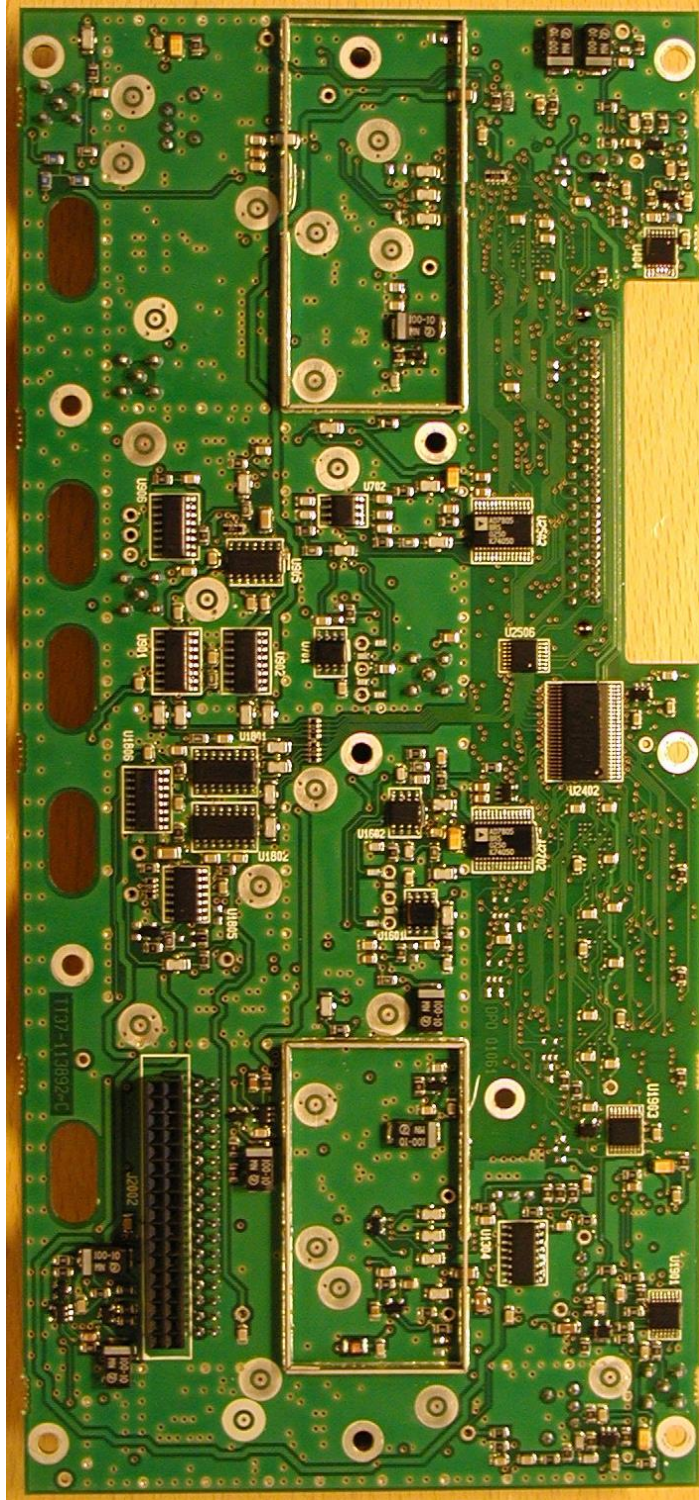


Figure 9 93-113892

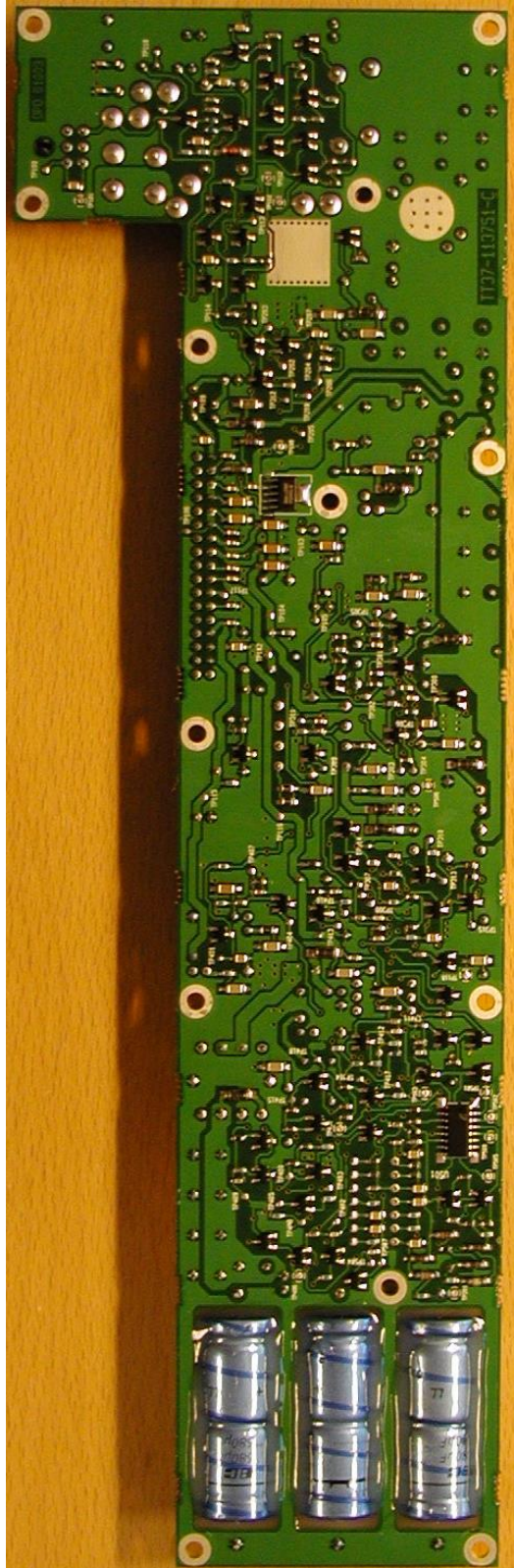


Figure 10. 93-113751

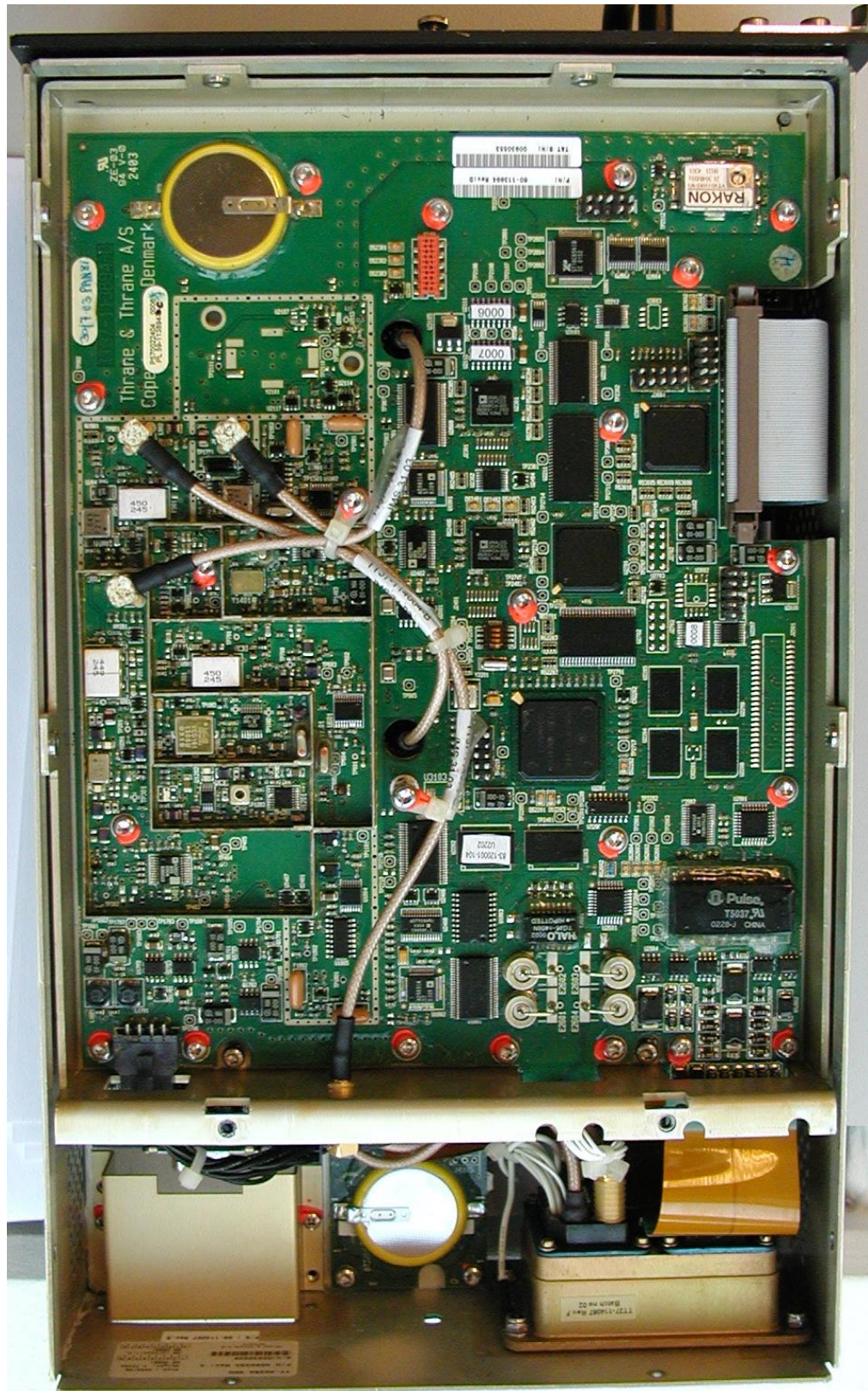


Figure 11. 5035A SDU:93-113894

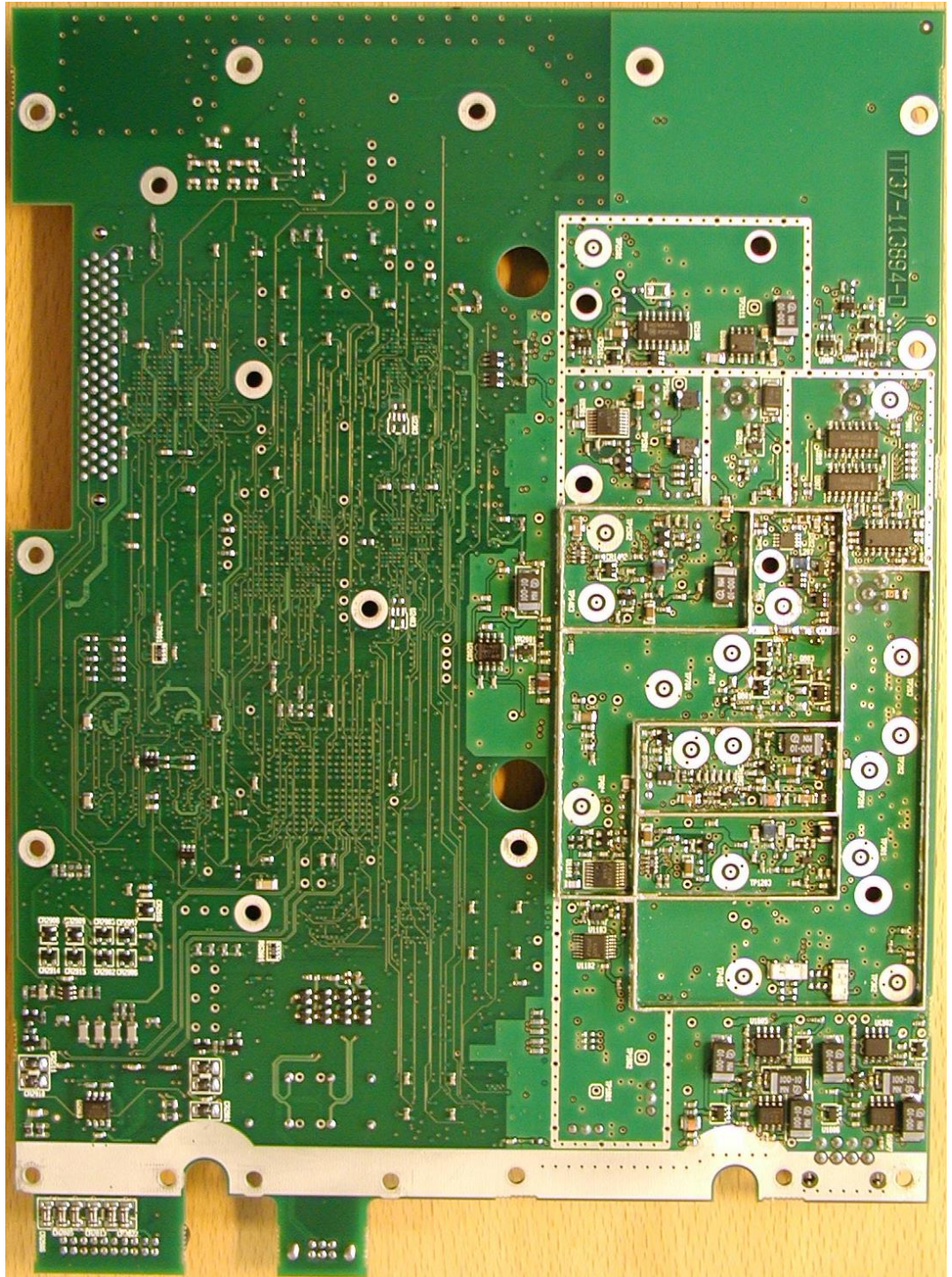


Figure 12. 93-113894



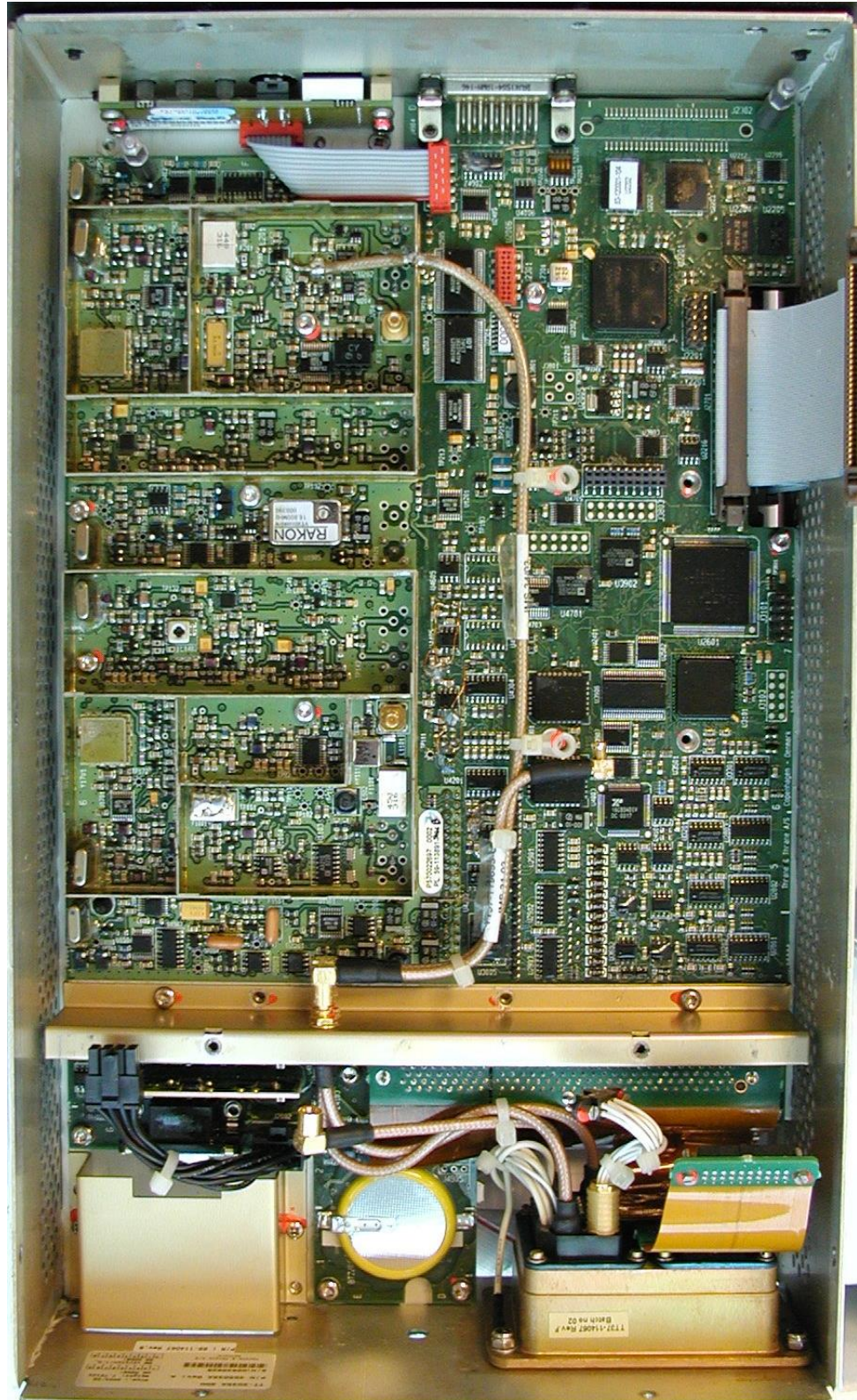


Figure 13. 5035A SDU: 93-113891

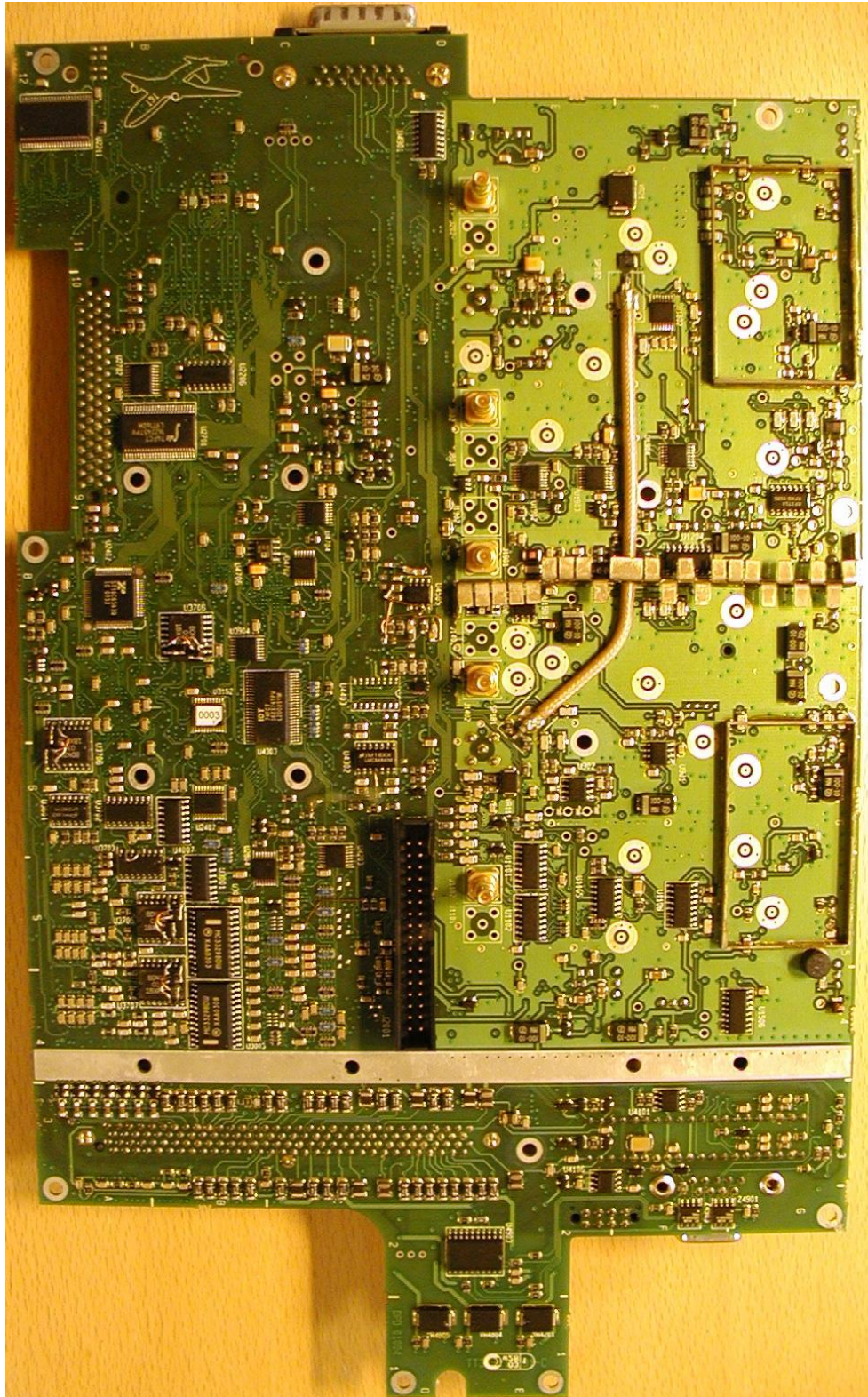


Figure 14. 93-113891

4. 405040A SBU

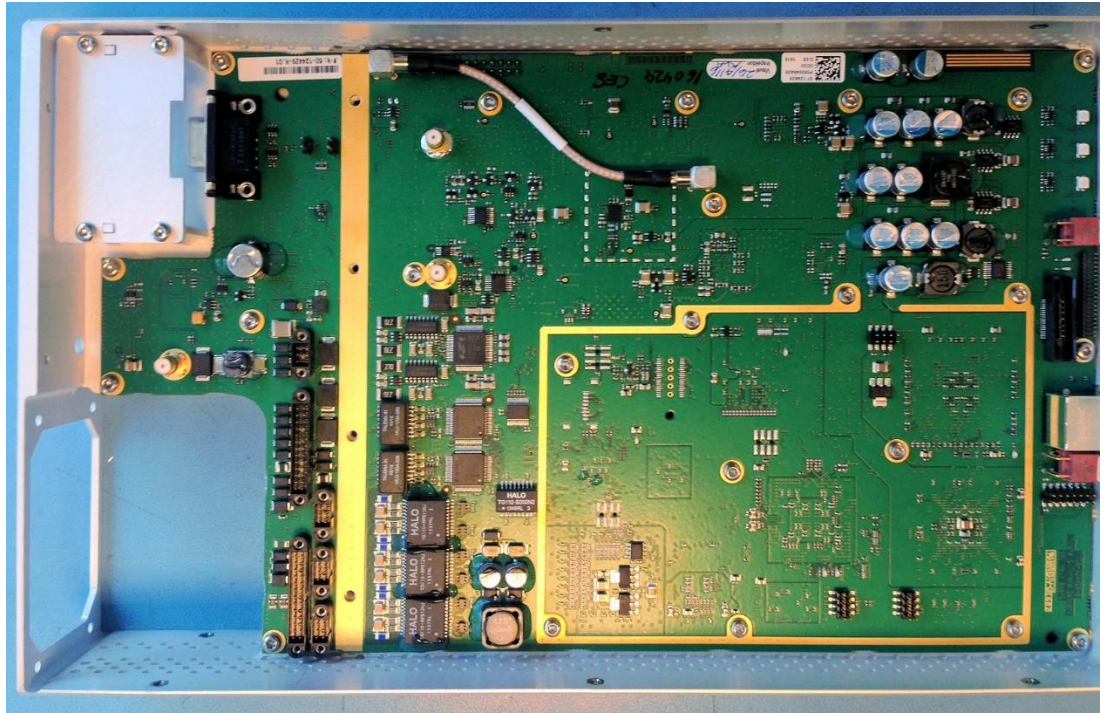


Figure 15. Mainboard Front

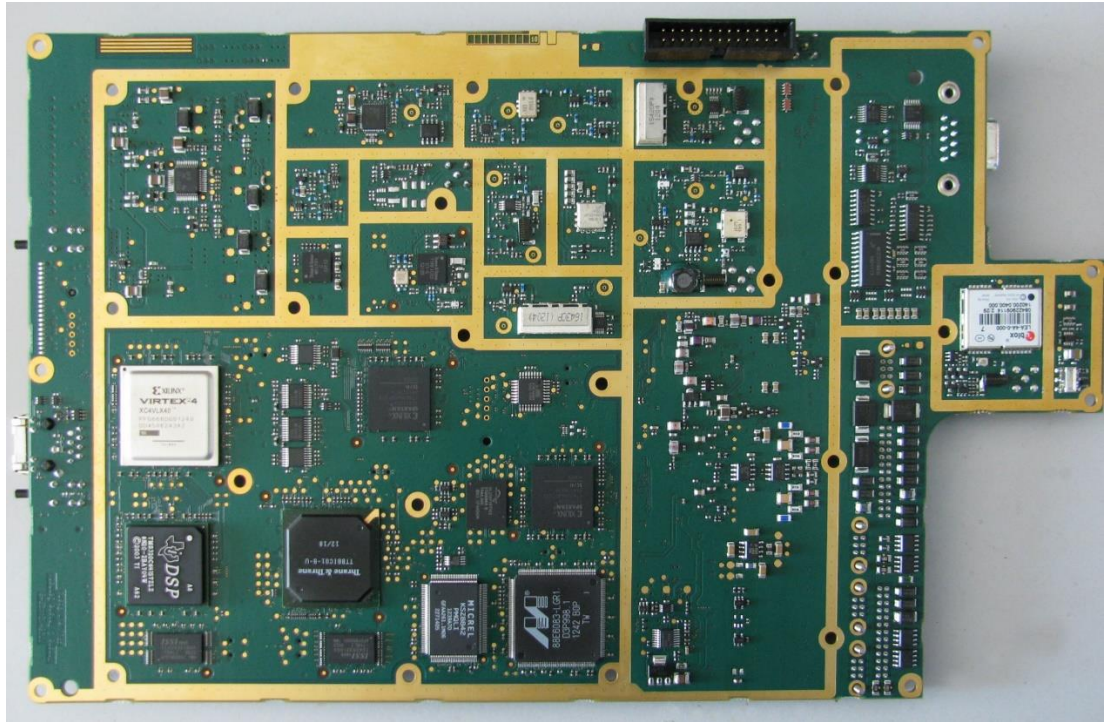


Figure 16. Mainboard Back

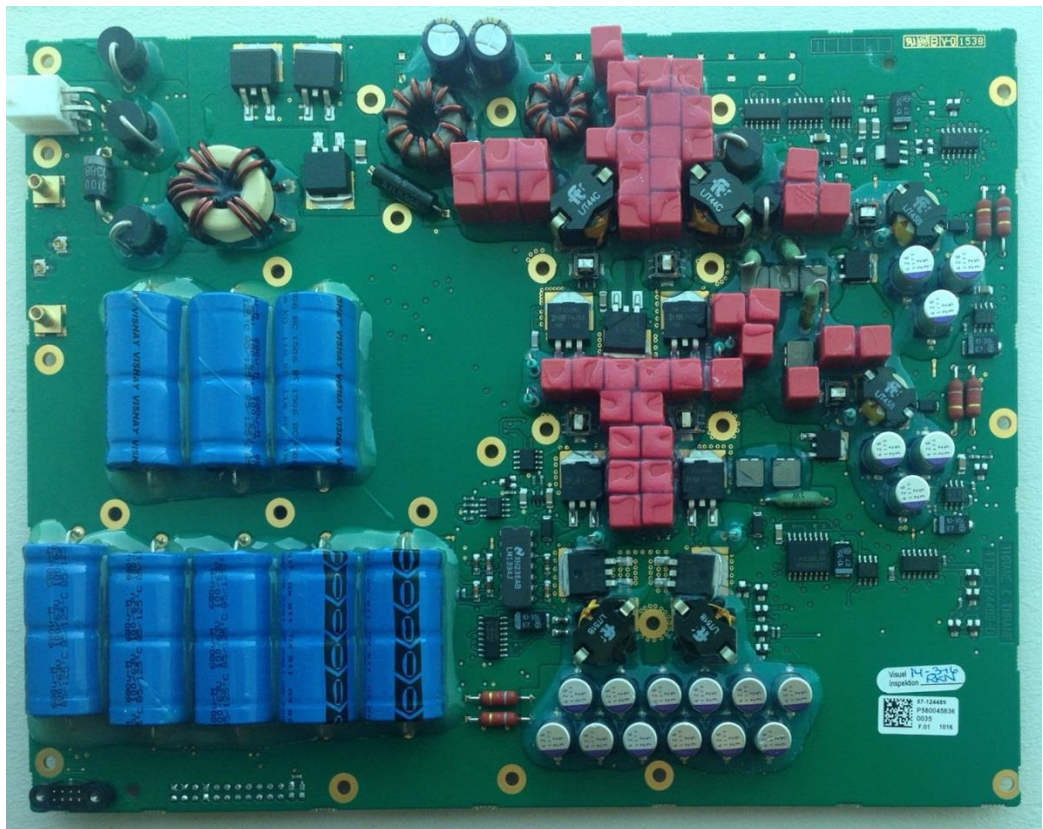


Figure 17. PSU Front

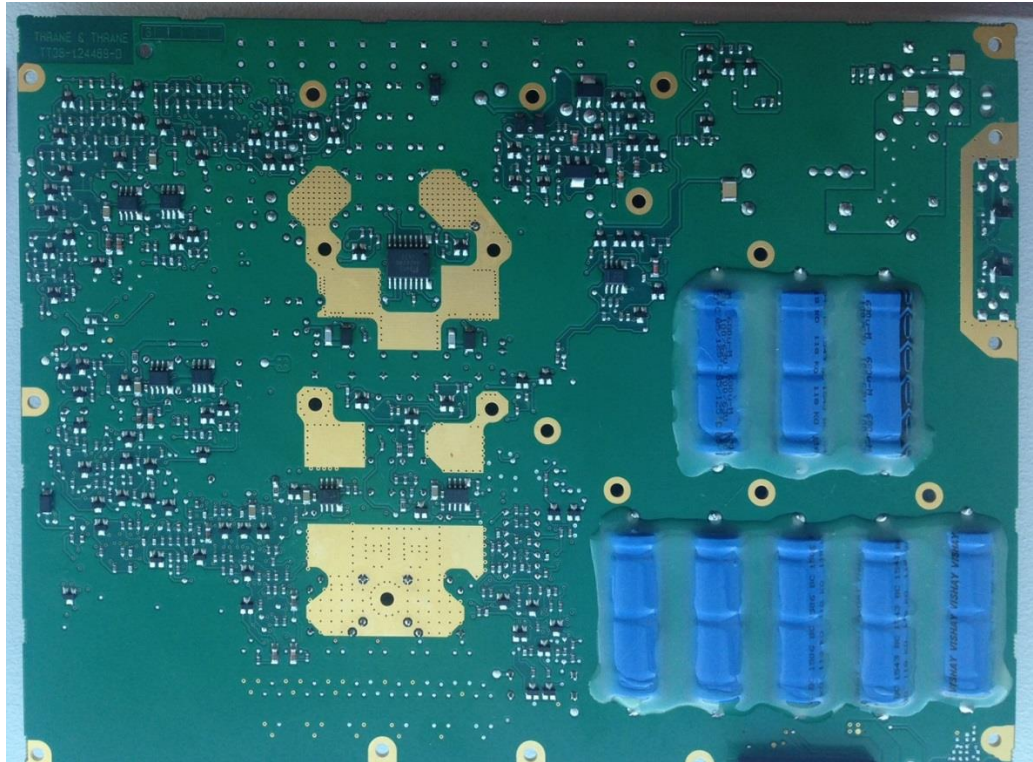


Figure 18. PSU Back