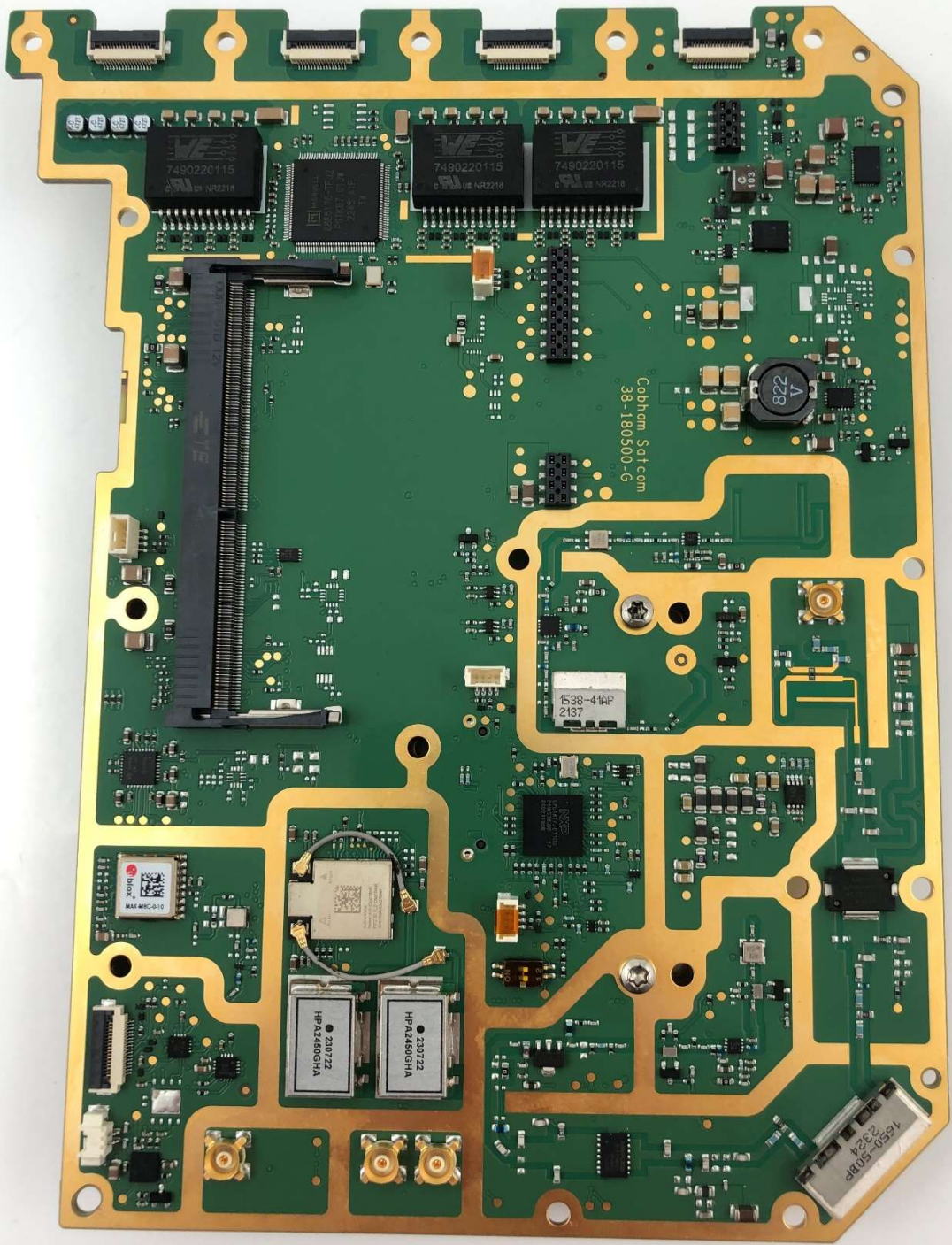


Cobham Satcom
38-181000-C



7490220115
NR2218

7490220115
NR2218

7490220115
NR2218

Cobham Satcom
38-180500-6

1538-44P
2137

MAX9869CQ1A

210722
HP A2460GHA

210722
HP A2460GHA

16SD-50BP
2324



57-179701
000054 0014
0C.01 0524

38-179701-C

S10X2820C
KOREA

ALLIANCE MEMORY
4096
M5E230000



2404
SMC 2.8
900000 US E30000

SKhynix
H26M41208PR1
e-NAND 829A

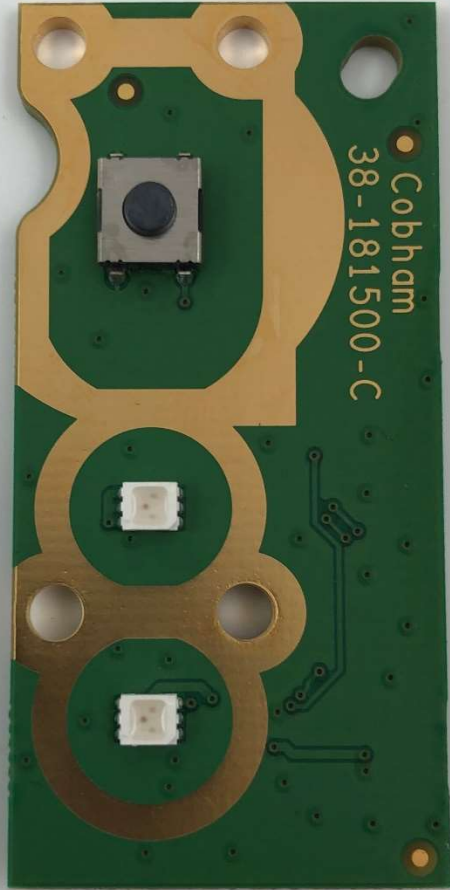
24060541053ALF

TU-662
E69282
2316
WV02 94V-0



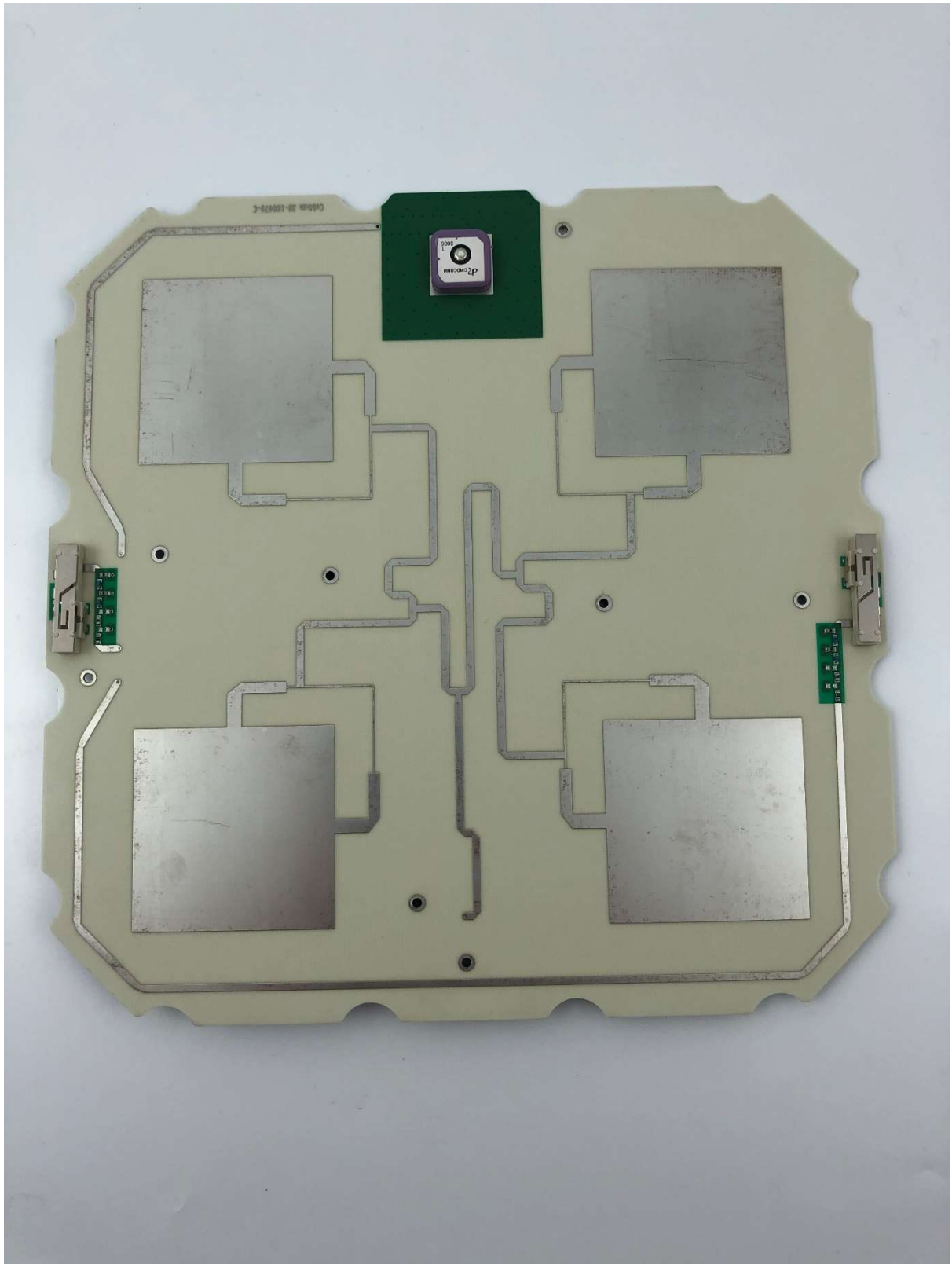
57-181500
235029
0077
0C.01 1823



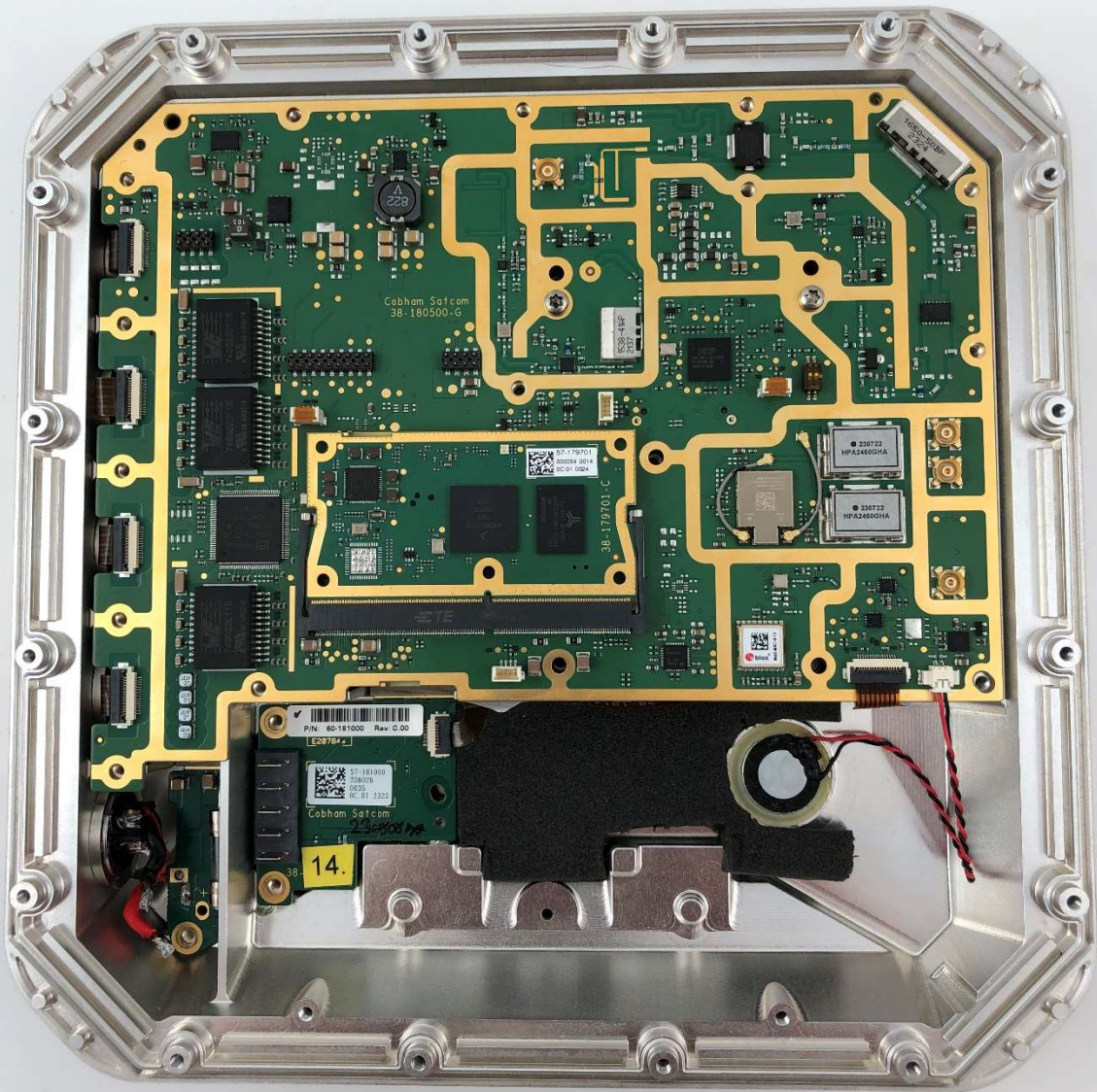


Cobham
38-181500-C









Cobham Satcom
38-180500-G

38-179701-C

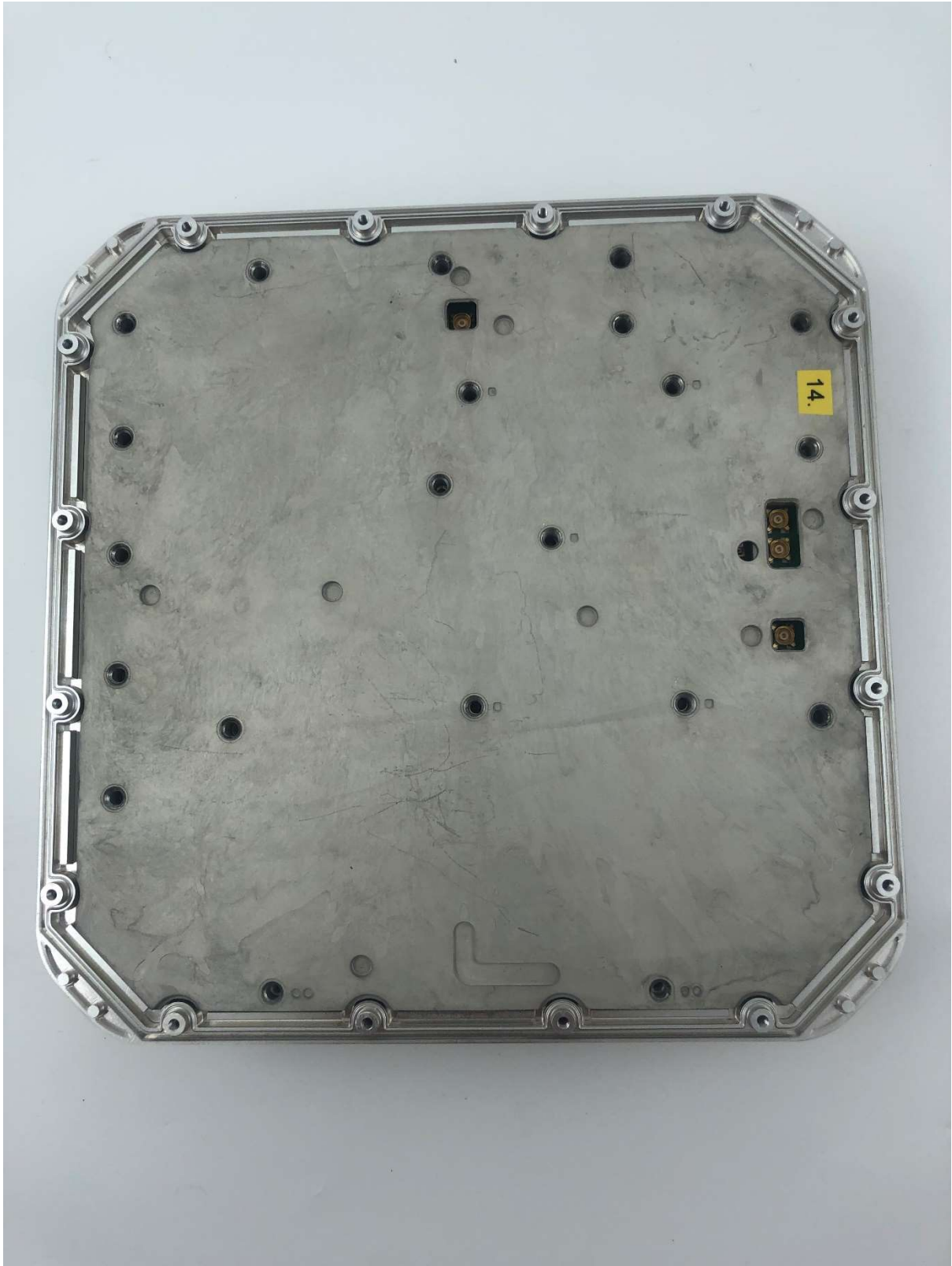
P/N: 80-181000 Rev. C.00
[E297842]

38-181900
381800
P235
REV. 01 2022
Cobham Satcom

14.

230722
HPA24450HA

230722
HPA24450HA





2028
2024
2020
2016
2012
2008
2004
2000



45-100389

Rechargeable Smart Battery Pack Li-Ion 二次锂电池组 / 二次锂电池组
Model 型号 / 型号 RRC2040-2
Nominal Voltage 标称电压 / 标称电压 10.80V
Rated Capacity 额定容量 6900mAh 74.50Wh
Max. Charge Voltage 充电限制电压 12.60V
Max. Charge Current 充电限制电流 4.83A



Caution Read battery and device instructions before use!



Caution: risk of fire and burns. Do not expose to water, fire or excessive heat. Do not crush, disassemble, puncture or short circuit the connector terminals. Please charge the battery before initial use. Charge only with a SMBus compliant level 2 or 3 charger. Manual under www.rrc-ps.com/manual2040-2

注意：发生火灾和烧伤的危险。禁止拆解、撞击、挤压或投入火中。若出现严重故障，请勿继续使用。请勿置于高温环境中。请勿置于潮湿环境中。请勿置于阳光直射下。请勿置于火源附近。请勿置于热源附近。请勿置于热源附近。请勿置于热源附近。