

EXPLORER 540 TT-3715A

Inside/Outside pictures

Assy Number

TT-3715A

Document Title

Document number:

DocNbr

Date:

12-11-2015

Author:

Bjarre Maaløe

Copyright© Thrane & Thrane A/S trading as Cobham SATCOM
Lundtoftegaardsvej 93D, DK-2800 Kgs. Lyngby, Denmark

ALL RIGHTS RESERVED

REVISION HISTORY				
Rev.	Date	App.	Section	Description / Remarks
A			All	Original

© Thrane & Thrane A/S trading as Cobham SATCOM

This Document and any other appended documents and drawings are of © copyright to Thrane & Thrane A/S. It contains proprietary information which is disclosed for information purposes only. The contents of this document shall not in whole or in part be used for any other purpose; be disclosed to any member of the recipients organisation not having a need to know such information or to any third party, individual, organisation or Government; be stored in any retrieval system or be produced or transmitted in any form by photocopying or any optical, mechanical or other means without prior permission of Thrane & Thrane A/S.

Table of Contents

Table of Contents.....	ii
1. Scope and Purpose.....	1
1.1. Related Documents	1
Non.....	1
1.2. References	1
Non.....	1
1.3. Abbreviations.....	1
2. Assembled Unit TT-3715A	2
3. Internal Unit TT-3715A.....	4
4. Radio module Unit TT-3750A.....	7
4.1. Radio module TT-3750A function by colour	8
4.2. Antenna Panel.....	9

1. Scope and Purpose

This document contains the pictures of the Cobham EXPLORER 540 TT-3715A, with following sub-assembly: Radio module Unit TT-3750A

1.1. Related Documents

Non.

1.2. References

Non.

1.3. Abbreviations

TBD	To Be Defined
TBC	To Be Continued

2. Assembled Unit TT-3715A



Figure 1 TT-3715A Front

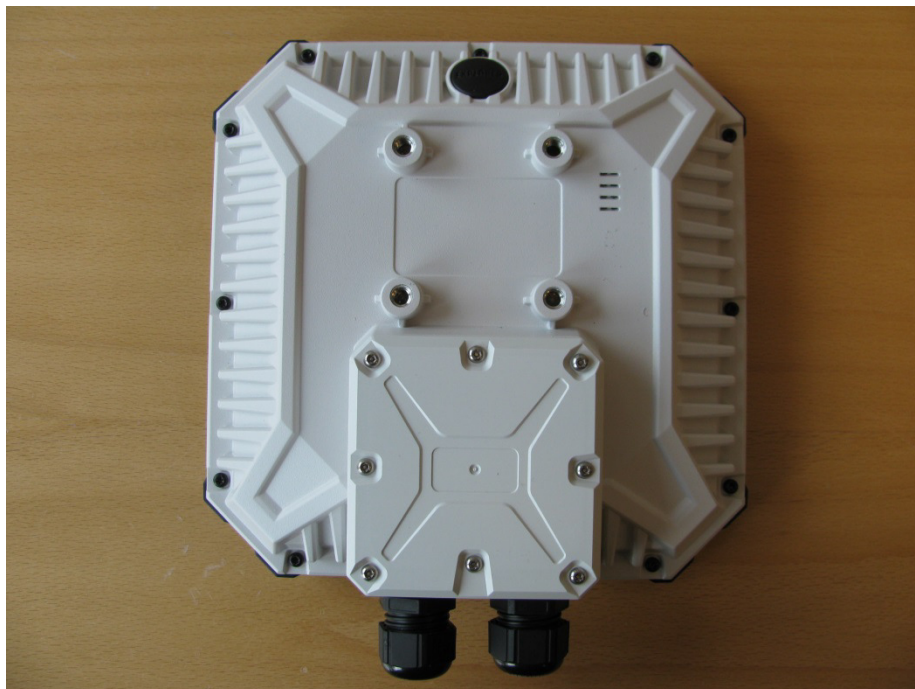
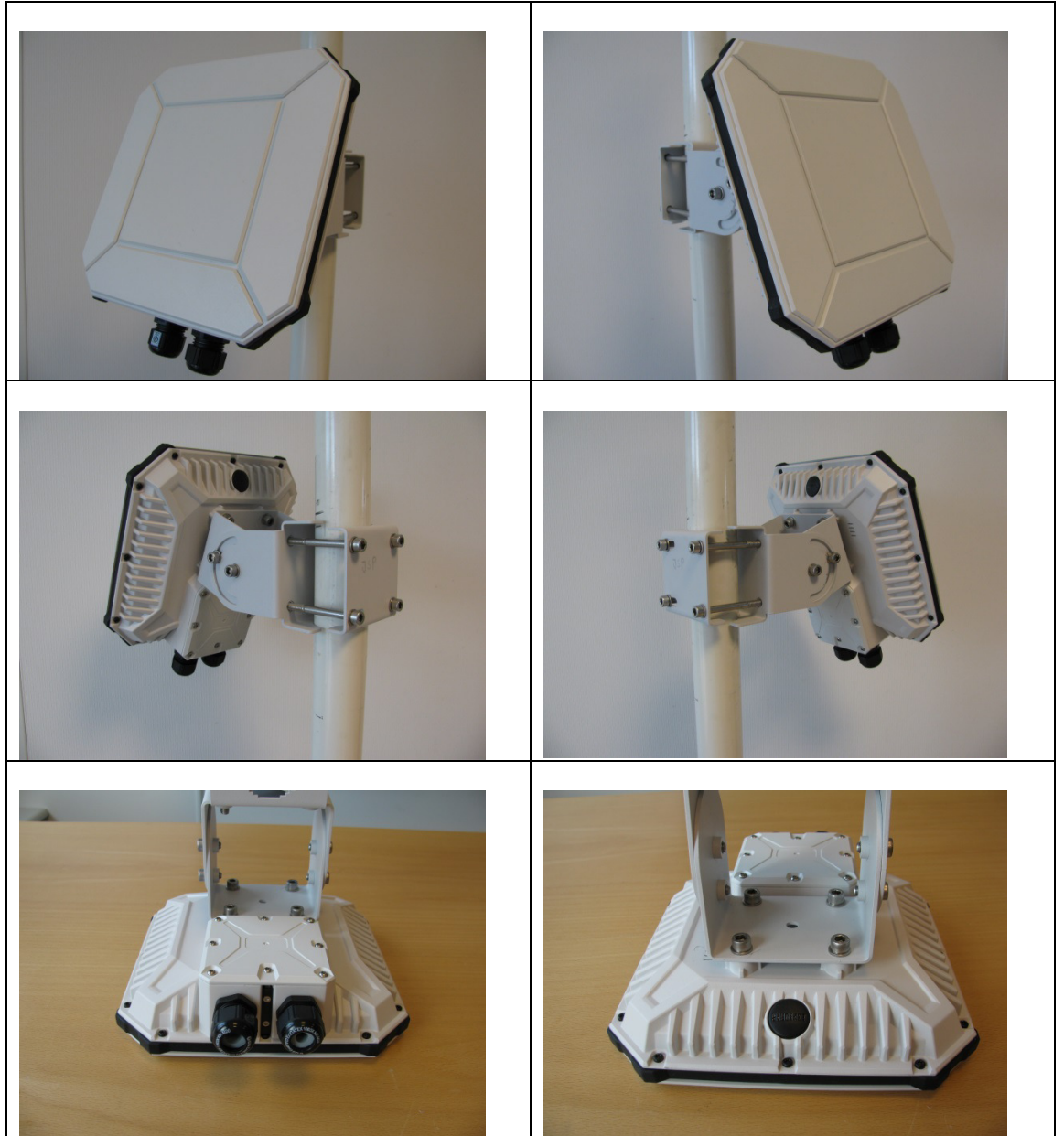


Figure 2 TT-3715A Rear



3. Internal Unit TT-3715A

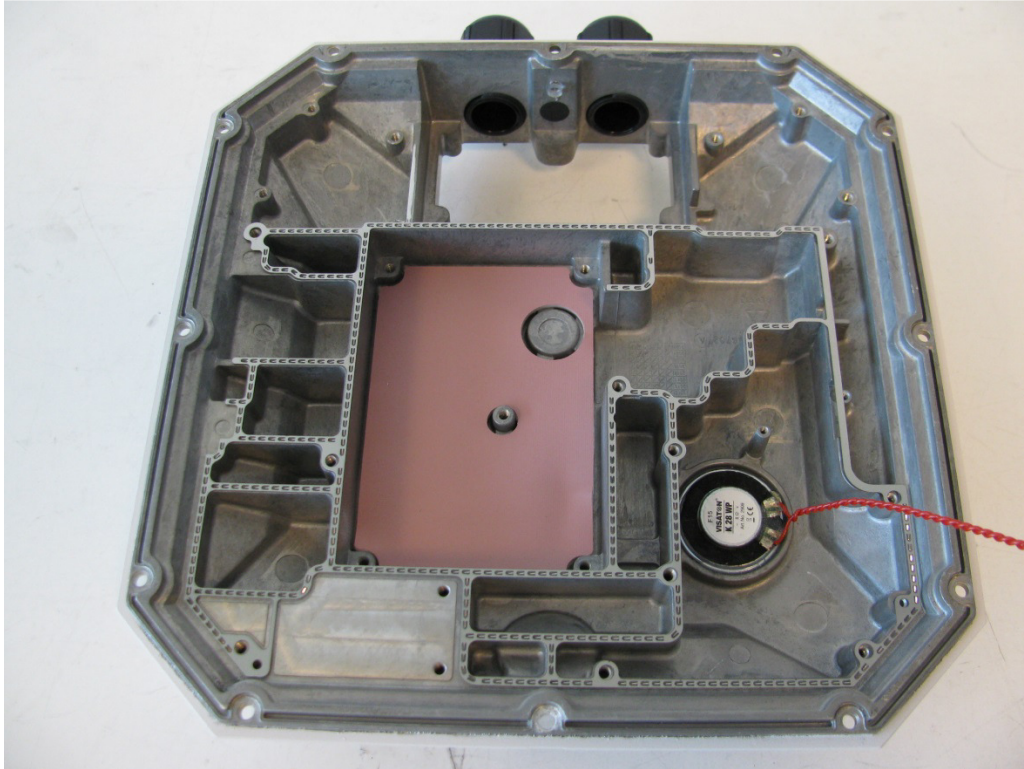


Figure 3 Bottom Shielding

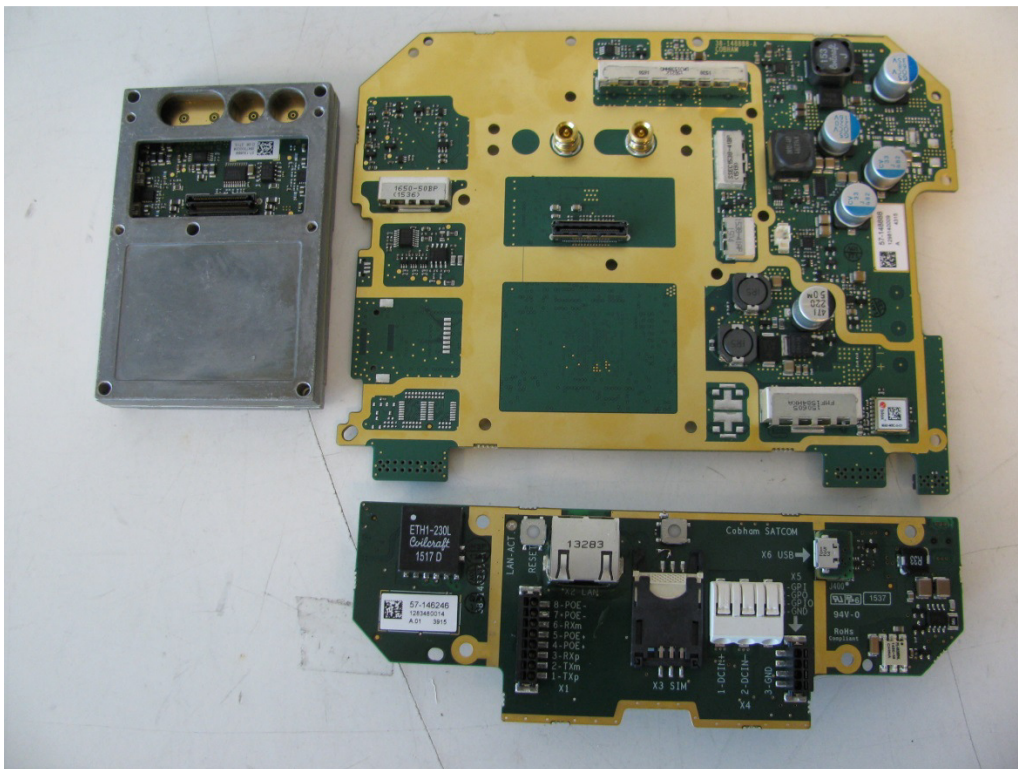


Figure 4 Boards

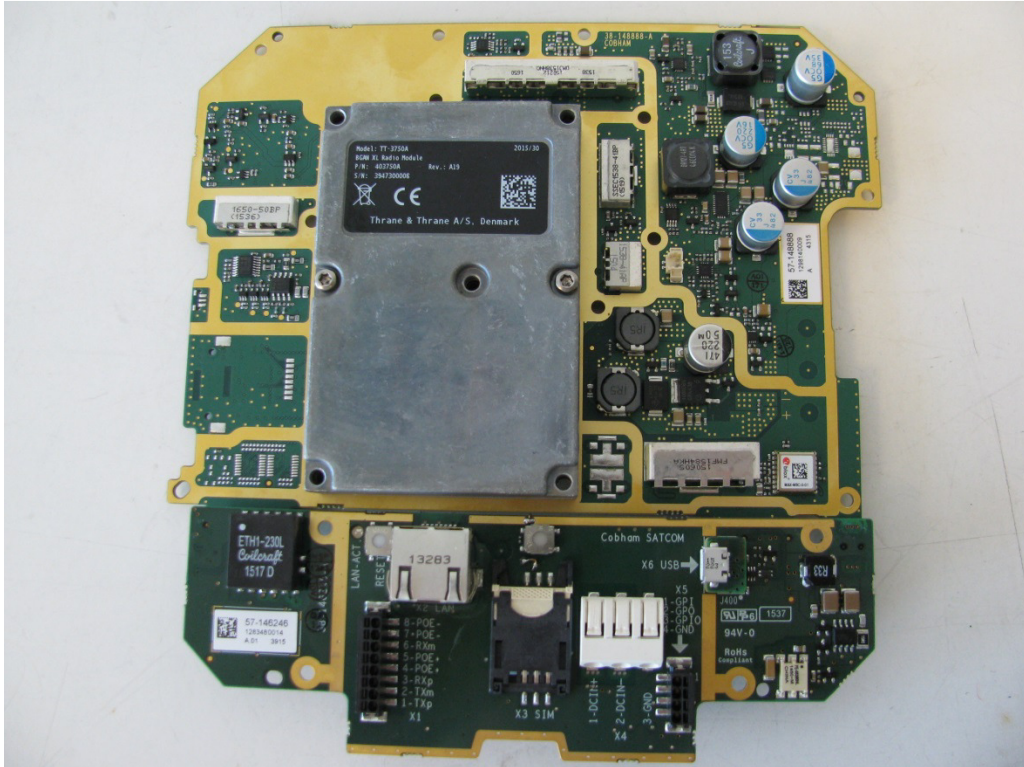


Figure 5 Boards

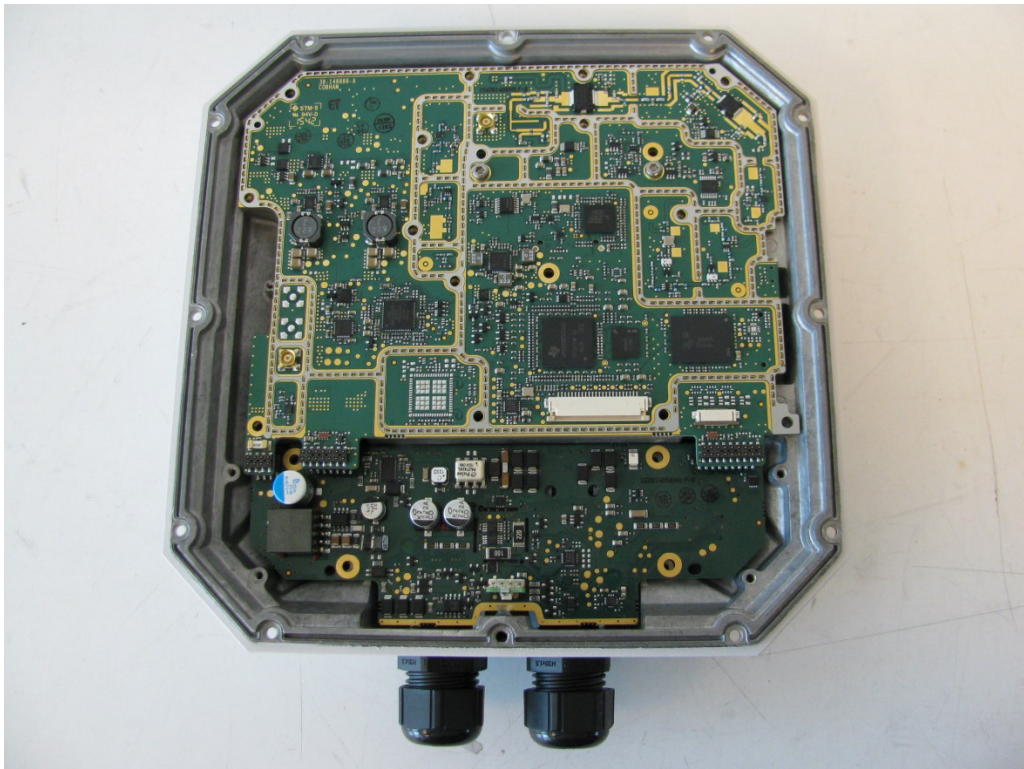


Figure 6 Boards in back cover

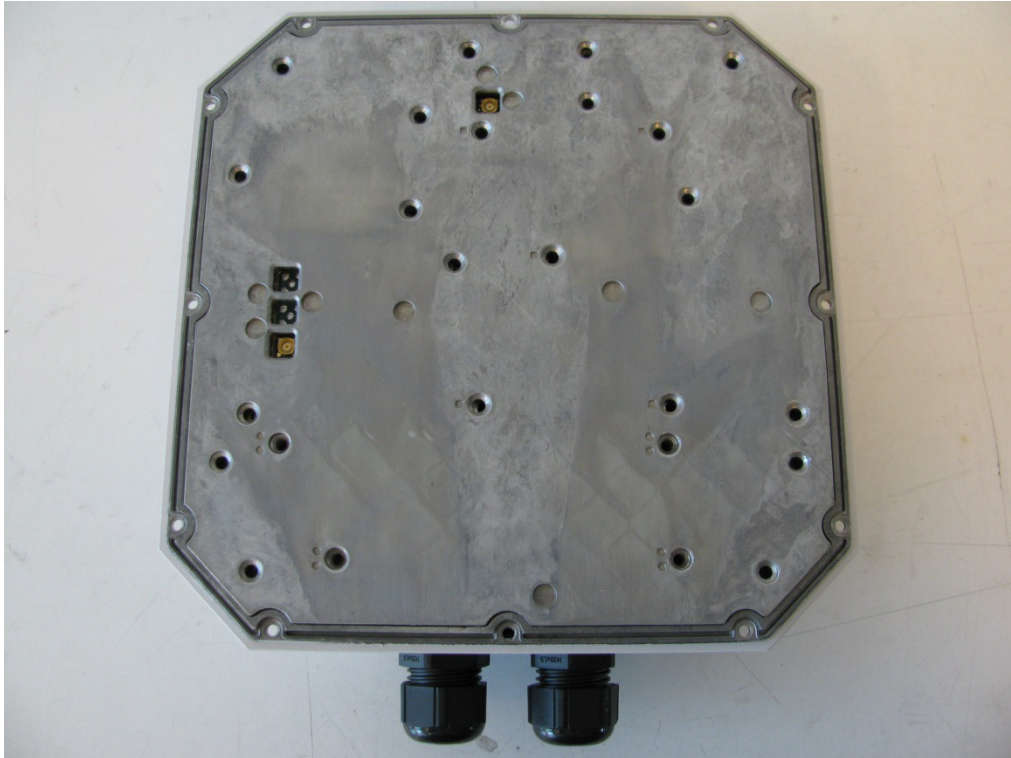


Figure 7 Top Shielding

4. Radio module Unit TT-3750A

The radio module is a subassembly of the TT-3715A

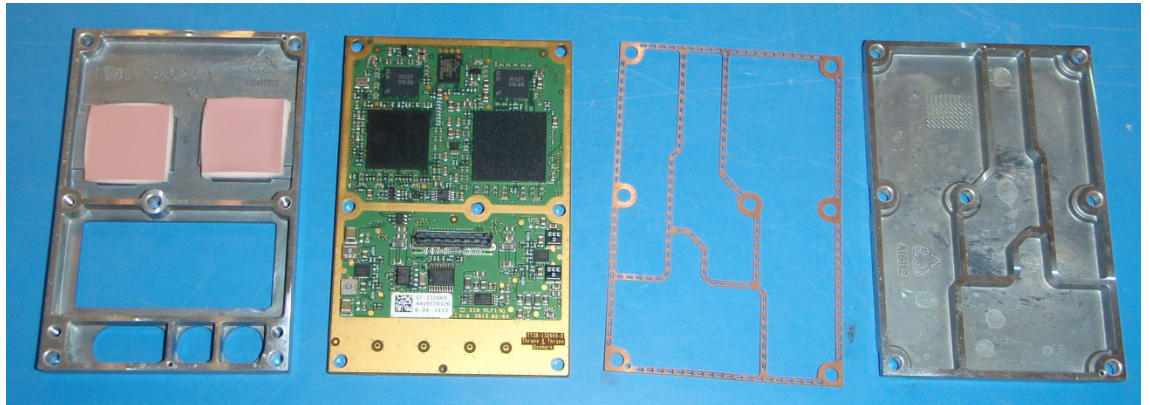


Figure 8 Radio Module TT-3750A

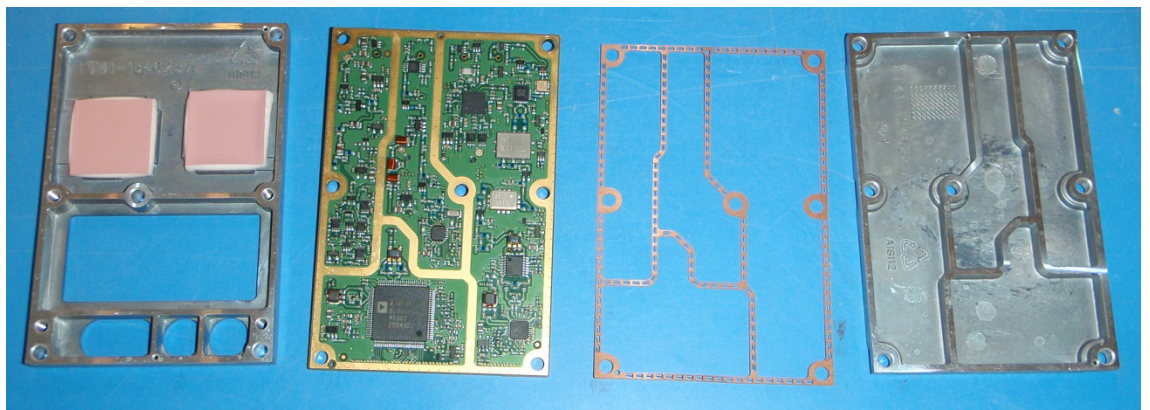


Figure 9 Radio Module TT-3750A

4.1. Radio module TT-3750A function by colour

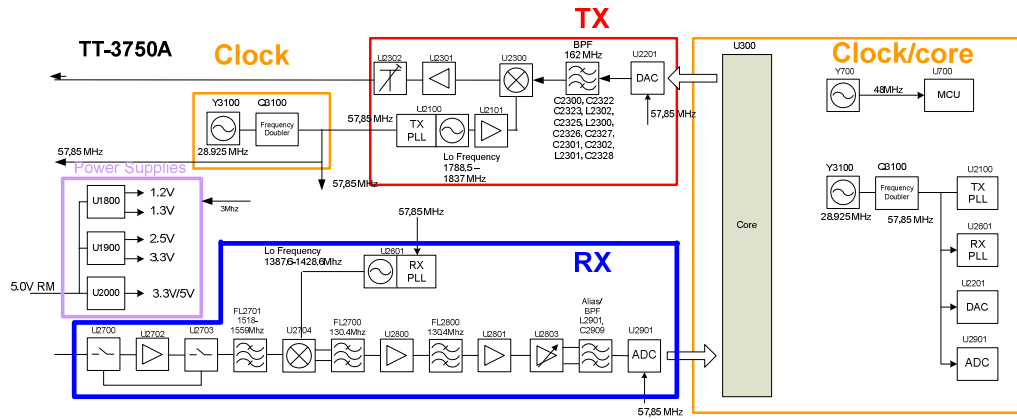


Figure 10 Radio module block diagram function by colour

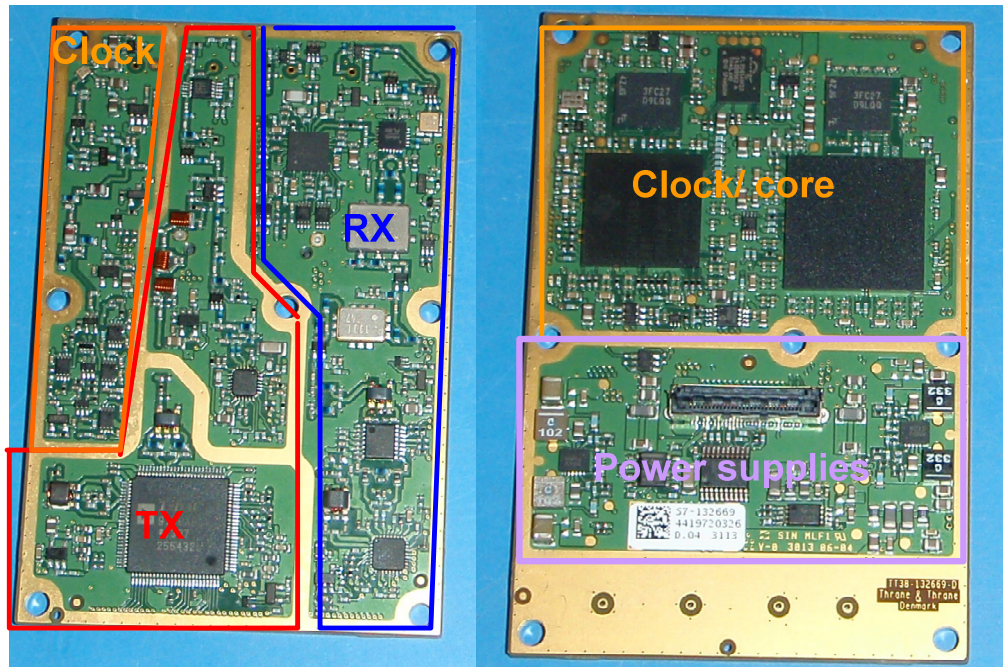


Figure 11 Radio module PCB function by colour

4.2. Antenna Panel

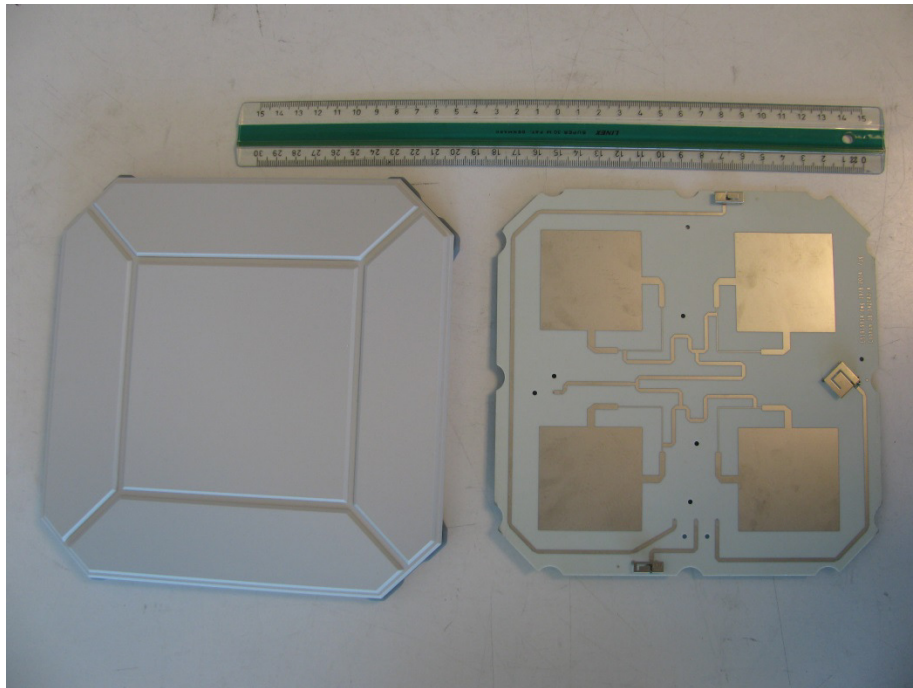


Figure 12 Antenna panel

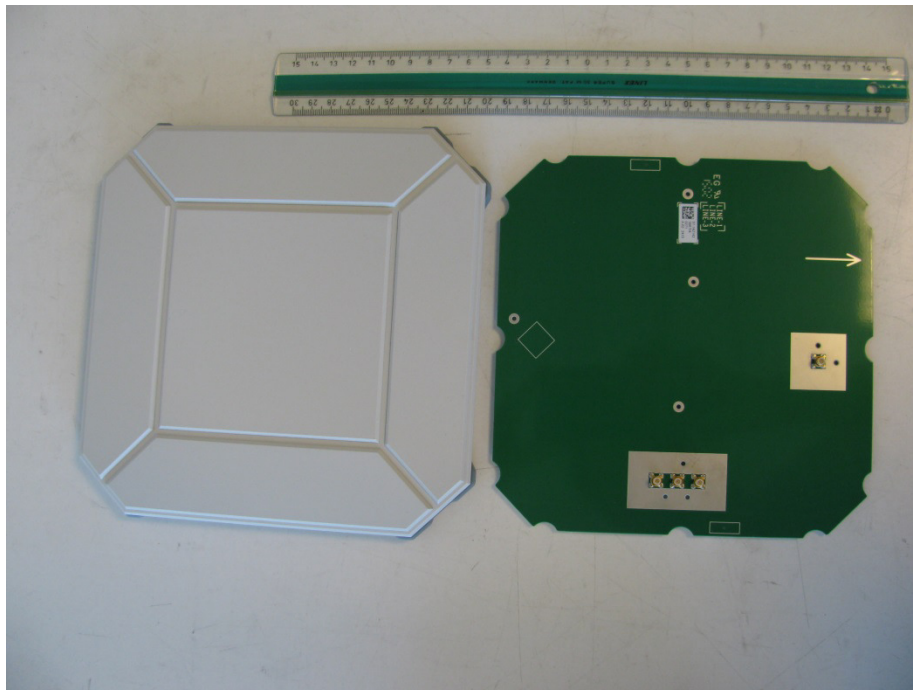


Figure 13: Antenna panel