

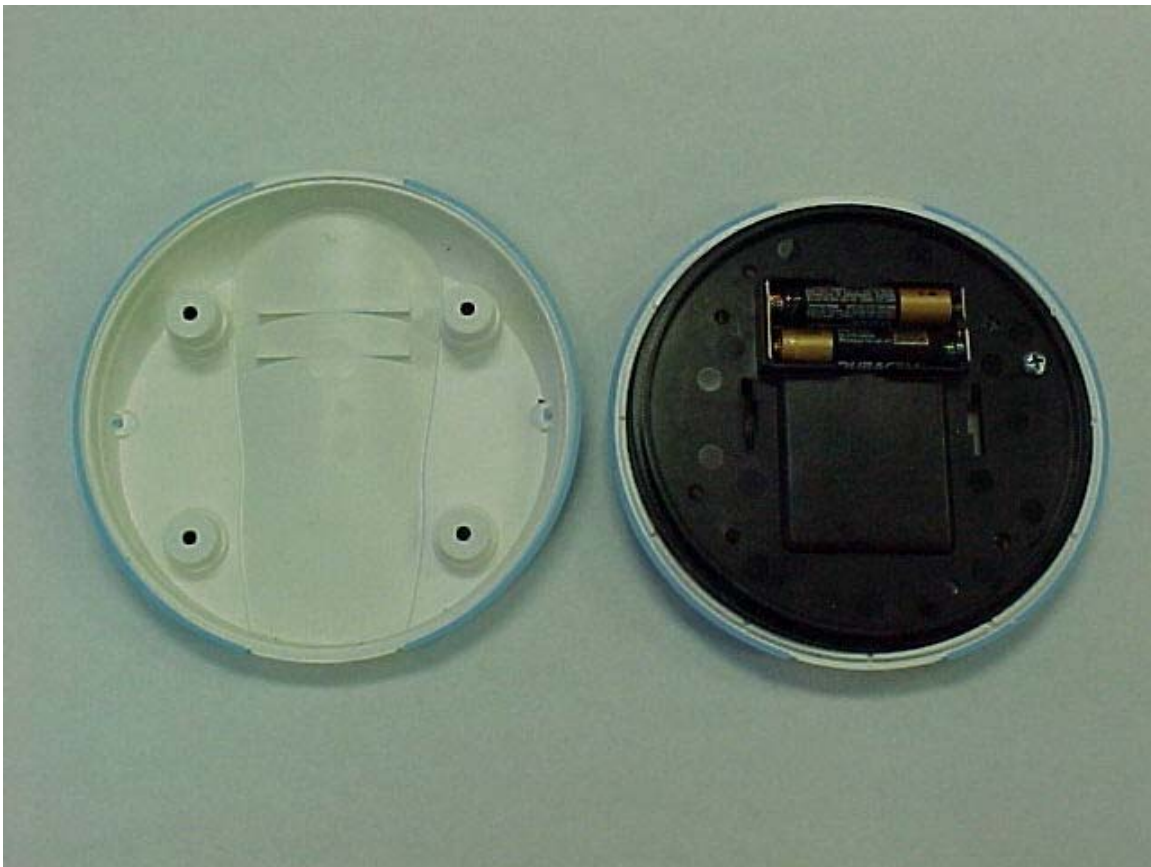
# **Goldline Controls Incorporated**

**AquaLogic Spa-side Remote Control  
902 – 926 MHz Radio**

**FCC ID#: RNW-AQLSPASIDE-RF**

## **Photo Four – Internal**

**Hand Held Spa Controller Open for Inspection**



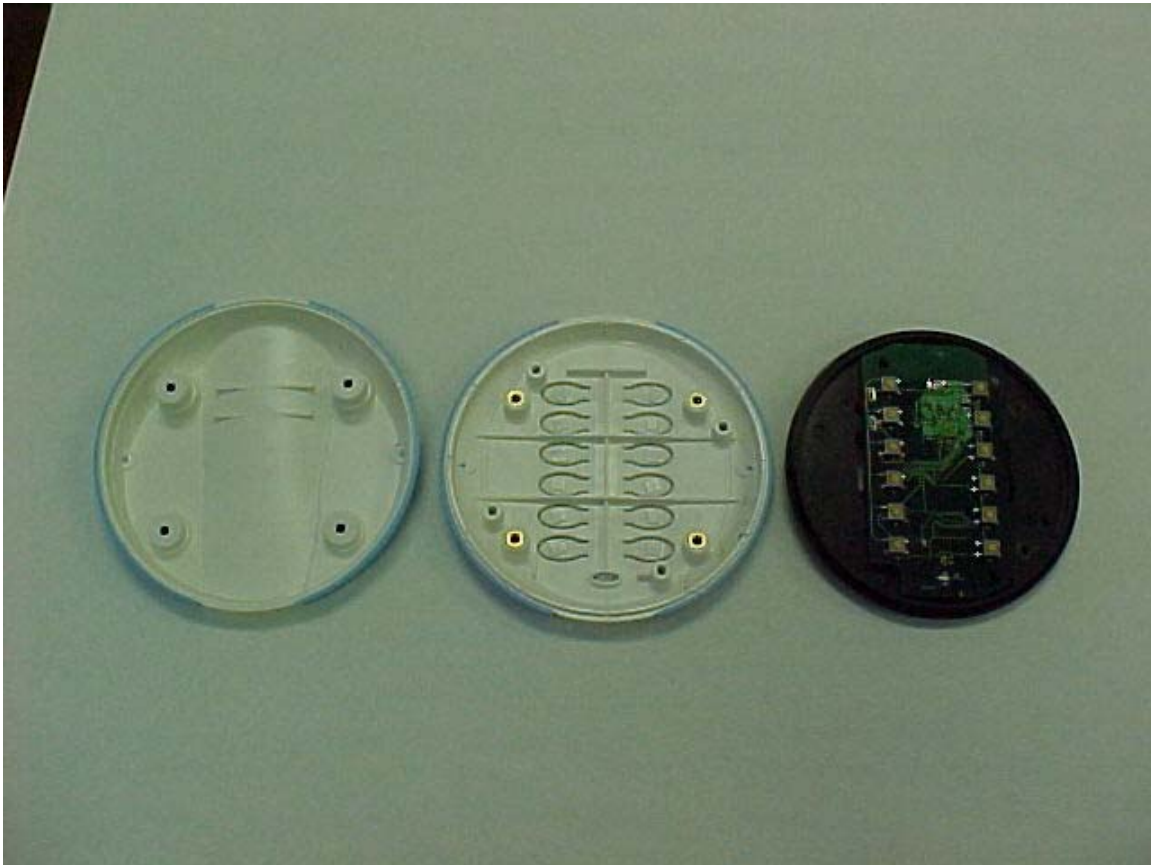
# **Goldline Controls Incorporated**

**AquaLogic Spa-side Remote Control  
902 – 926 MHz Radio**

**FCC ID#: RNW-AQLSPASIDE-RF**

## **Photo Five – Internal**

**Hand Held Spa Controller Open for Inspection  
Key Board Contacts**



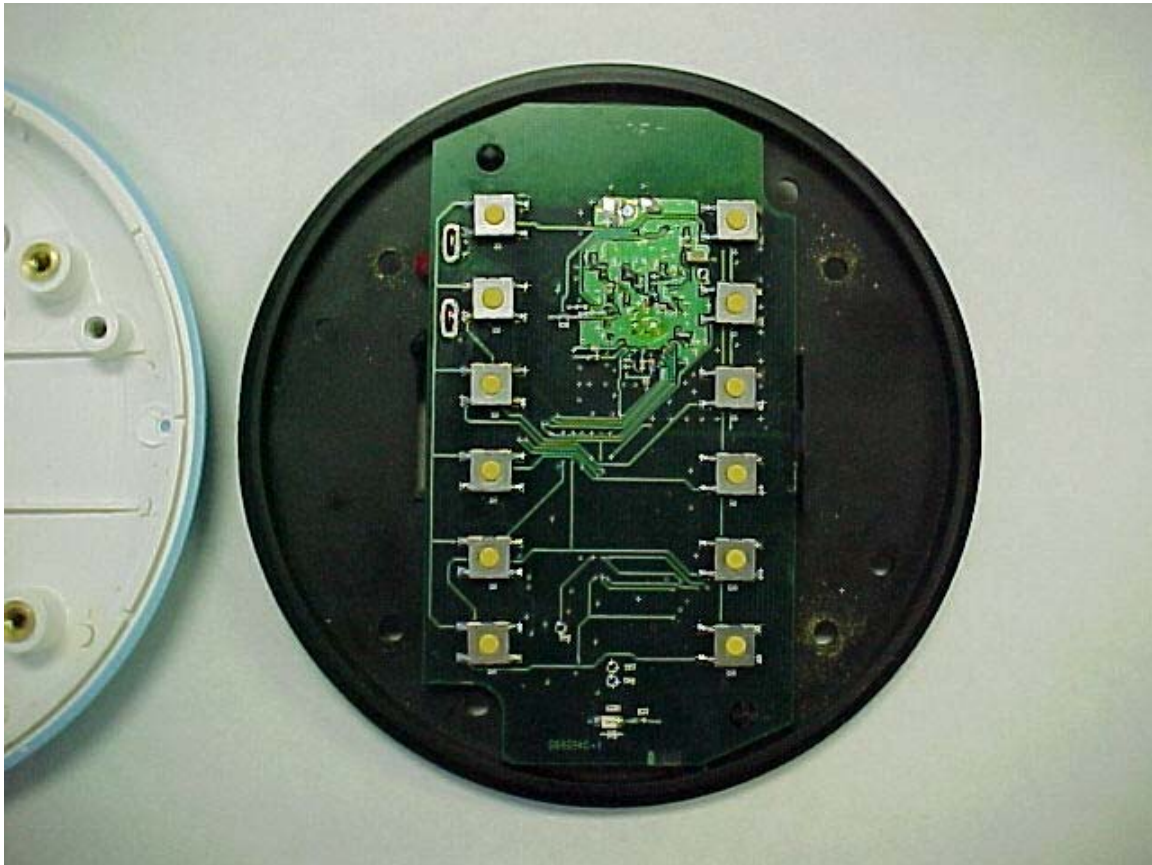
# **Goldline Controls Incorporated**

**AquaLogic Spa-side Remote Control  
902 – 926 MHz Radio**

**FCC ID#: RNW-AQLSPASIDE-RF**

## **Photo Six – Internal**

**Hand Held Spa Controller Open for Inspection  
Key Board PCB Close Up**



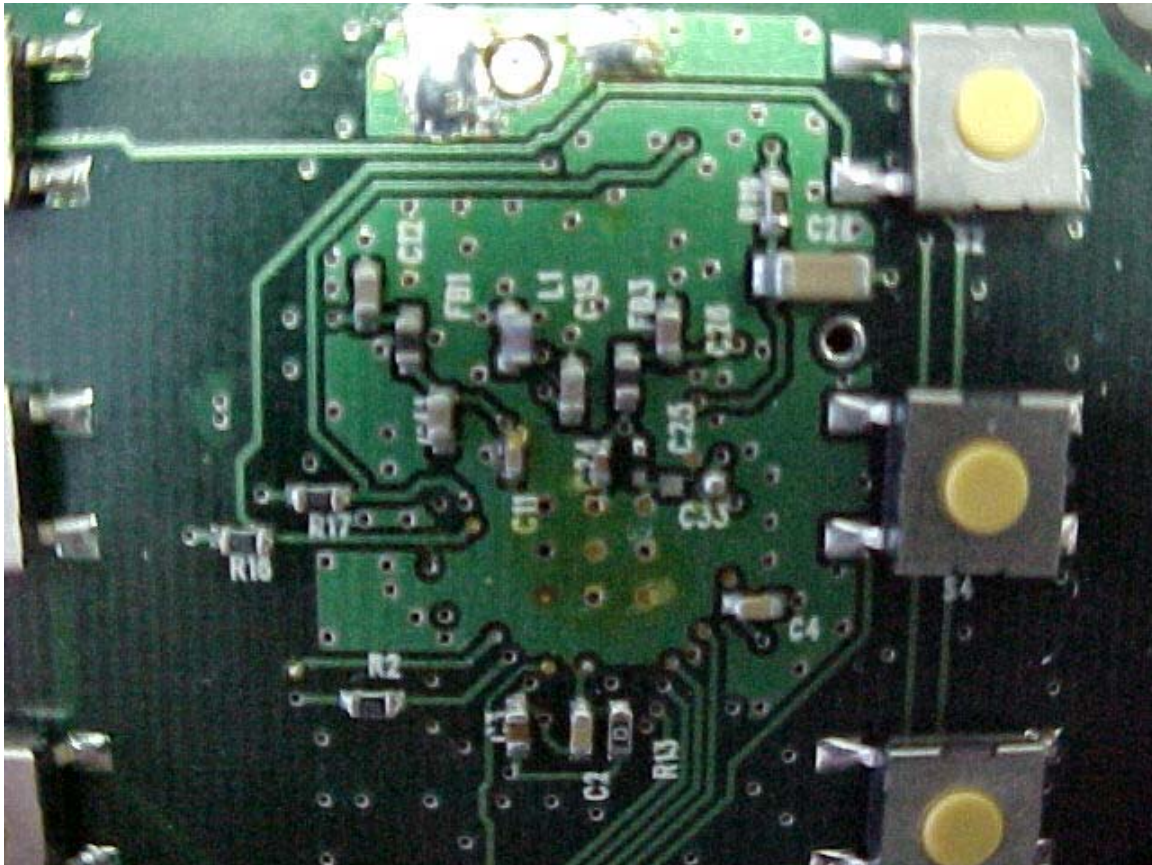
# **Goldline Controls Incorporated**

**AquaLogic Spa-side Remote Control  
902 – 926 MHz Radio**

**FCC ID#: RNW-AQLSPASIDE-RF**

## **Photo Seven – Internal**

**Hand Held Spa Controller Open for Inspection  
Key Board PCB RF Section Close Up**





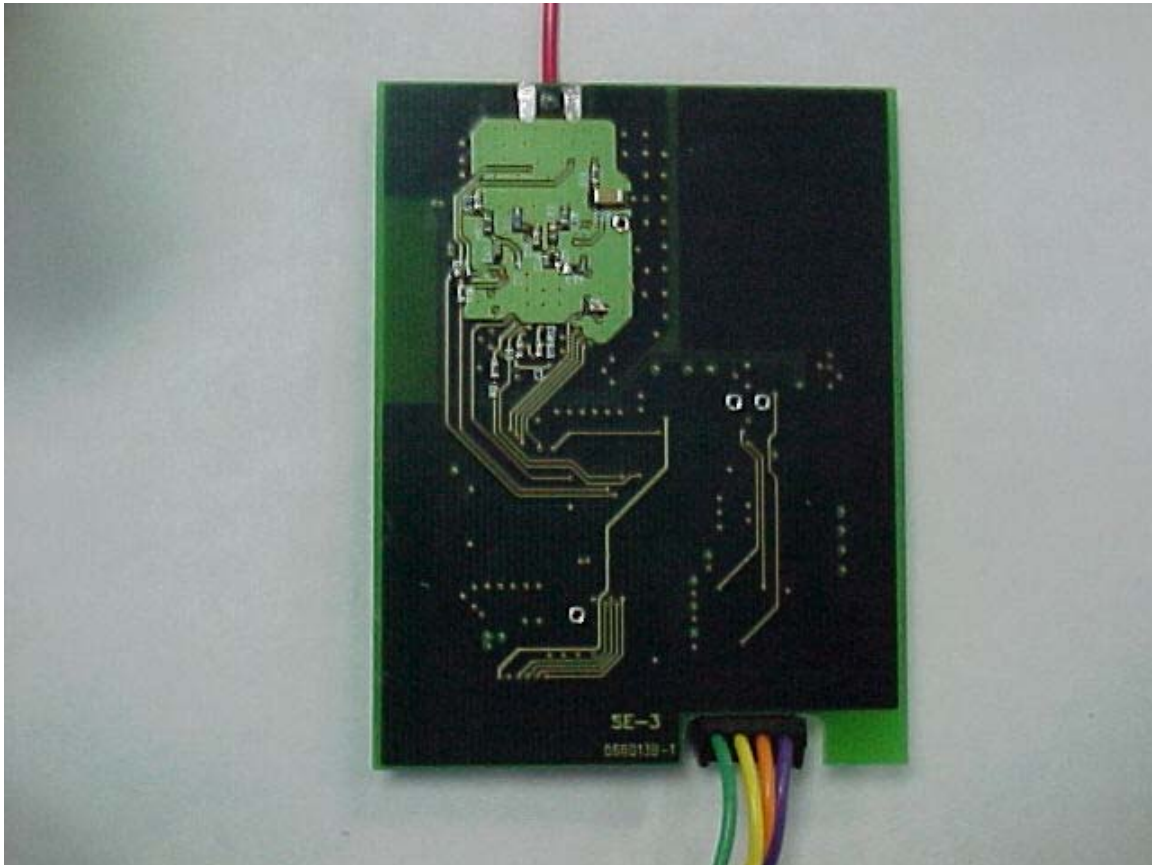
# **Goldline Controls Incorporated**

**AquaLogic Spa-side Remote Control  
902 – 926 MHz Radio**

**FCC ID#: RNW-AQLSPASIDE-RF**

## **Photo Eight – Internal**

**Hand Held Spa Controller Open for Inspection  
Key Board PCB Flip Side**



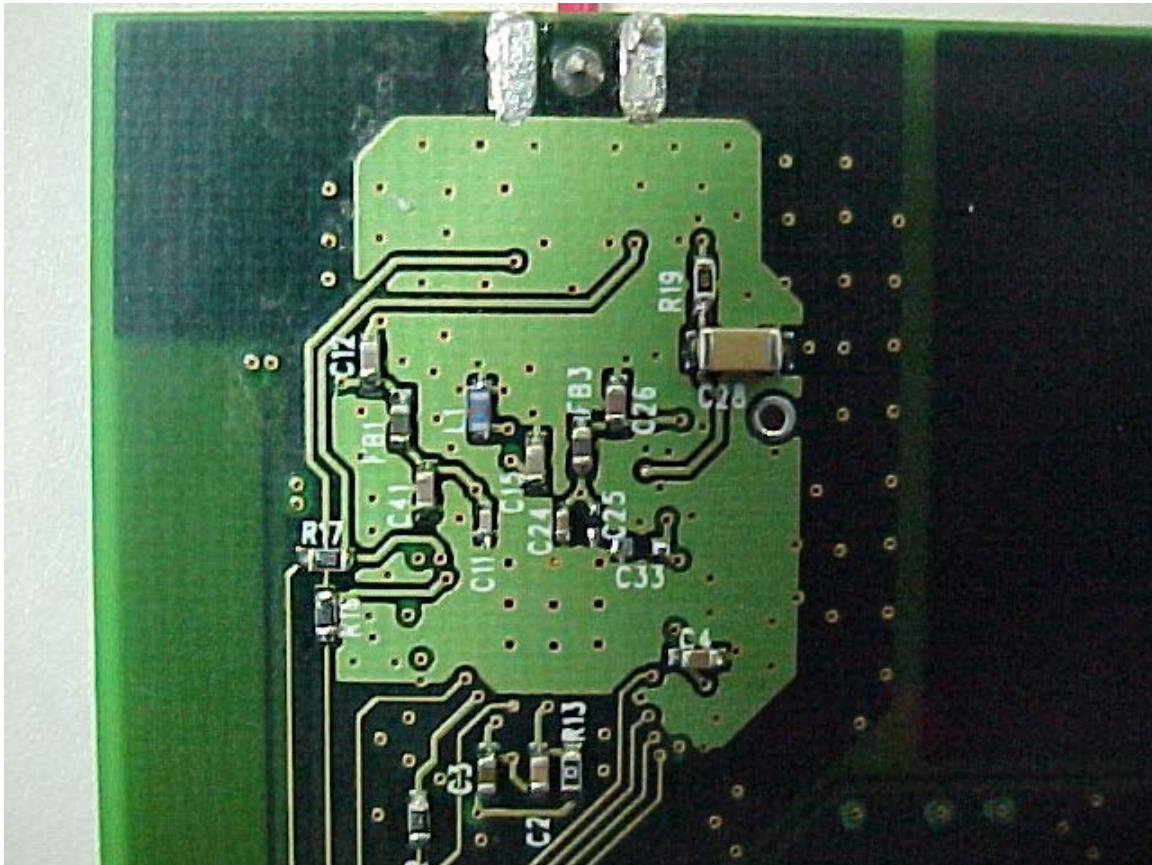
# **Goldline Controls Incorporated**

**AquaLogic Spa-side Remote Control  
902 – 926 MHz Radio**

**FCC ID#: RNW-AQLSPASIDE-RF**

## **Photo Nine – Internal**

**Hand Held Spa Controller Open for Inspection  
Key Board PCB Flip Side RF Section Close Up**



# **Goldline Controls Incorporated**

**AquaLogic Spa-side Remote Control  
902 – 926 MHz Radio**

**FCC ID#: RNW-AQLSPASIDE-RF**

## **Photo Ten – Internal**

**Hand Held Spa Controller Open for Inspection  
Key Board PCB Flip Side RF Section Close Up  
with PCB Antenna**

