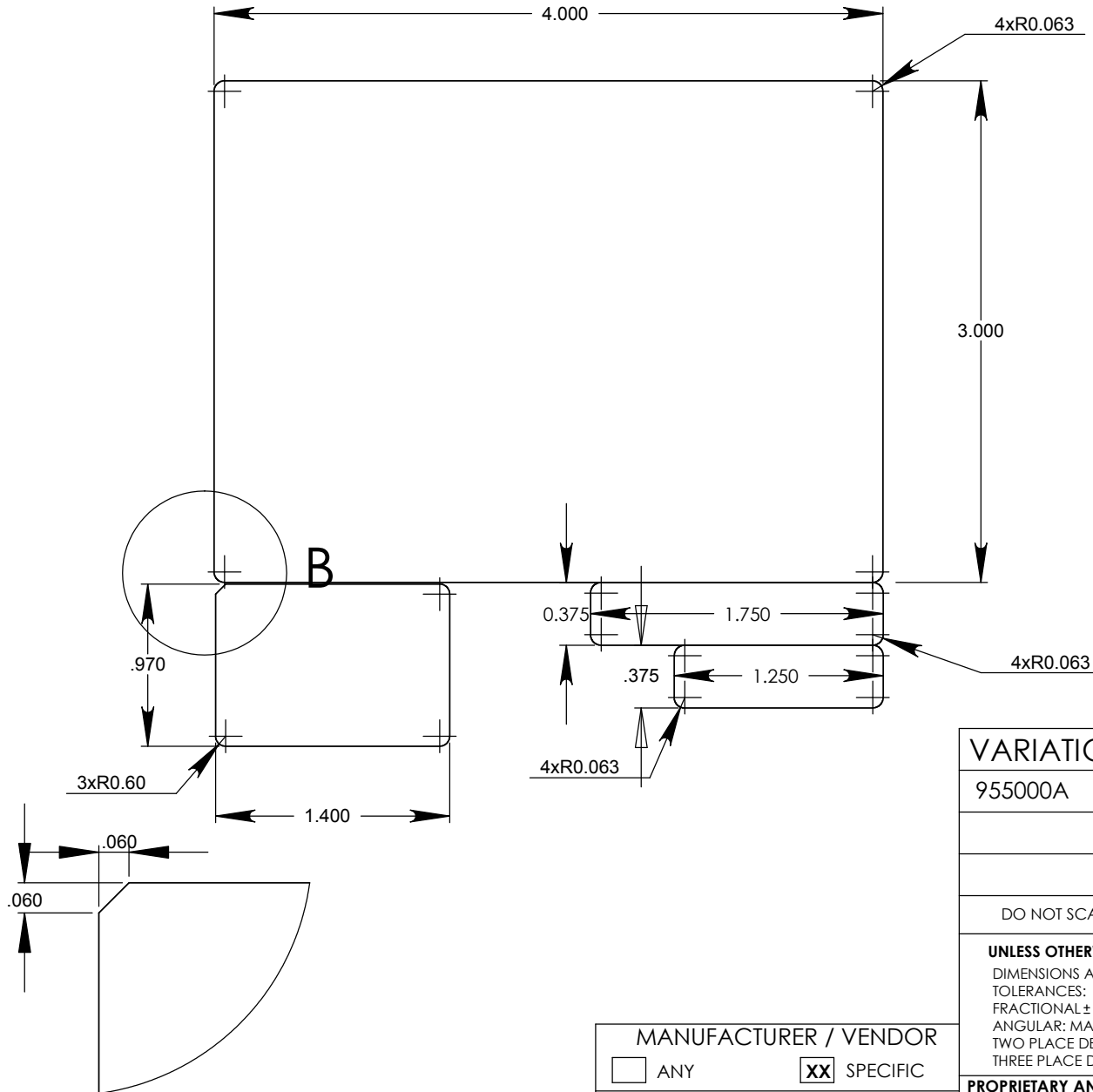


		REVISIONS		
ZONE	REV.	DESCRIPTION	DATE	APPROVED
	A	Released	11/22/03	



Notes:

1. Labelstock: 2.0 mil Glossy White Polyester
2. Adhesive: 1.9-2.1a mil Permanent Acrylic
3. Liner: 3.1 mil 50# paper
4. Ink Material: Resin, RB-8040

VARIATION		DESCRIPTION	
955000A		Label Kit, 4" x 4"	
DO NOT SCALE DRAWING		GOLDLINE CONTROLS, INC.	
UNLESS OTHERWISE SPECIFIED: DIMENSIONS ARE IN INCHES TOLERANCES: FRACTIONAL $\pm 1/10$ ANGULAR: MACH ± 1 BEND ± 1 TWO PLACE DECIMAL ± 0.01 THREE PLACE DECIMAL ± 0.005		61 Whitecap Drive North Kingstown, RI 02852	
PROPRIETARY AND CONFIDENTIAL THE INFORMATION CONTAINED IN THIS DRAWING IS THE SOLE PROPERTY OF GOLDLINE CONTROLS INC. ANY REPRODUCTION IN PART OR AS A WHOLE WITHOUT THE WRITTEN PERMISSION OF GOLDLINE CONTROLS INC. IS PROHIBITED.		DRAWN BY: <i>S.Kempski</i>	DATE: 6/23/2004
		APPROVED BY:	
		DRAWING TITLE: Label Kit, 4" x 4"	
SIZE A		PART NUMBER: 955000	REV A
DRAWING SCALE: 1:1		SHEET 1 OF 1	

MANUFACTURER / VENDOR	
<input type="checkbox"/> ANY	<input checked="" type="checkbox"/> SPECIFIC
OTHER CONTROLS	
<input checked="" type="checkbox"/> NONE	<input type="checkbox"/> UL CONTROL
DESIGN CONTROL	
<input checked="" type="checkbox"/> GOLDLINE	<input type="checkbox"/> MFG'S

DETAIL B
SCALE 3 : 1