



Date: 2007-04-11
No.: 60.880.7.002.02

TEST REPORT

Applicant: Chaney Instrument Co.
AB 29/F Hai Ying Building, South Caitian Road,
Futian District, Shenzhen China

Description of Samples: Model name: Wireless Weather Station (Transmitter)
Brand name: Nil
Model no.: 00611
FCCID: RNERF100MTX

Date Samples Received: 2007-03-12

Date Tested: 2007-03-12 to 2007-04-04

Investigation Requested: FCC Part 15 Subpart C, Section 15.231

Conclusions: The submitted product COMPLIED with the requirements of Federal Communications Commission [FCC] Rules and Regulations Part 15. The tests were performed in accordance with the standards described above and on Section 2.2 in this Test Report.

Remarks: ----

Checked by:

Approved by:-

A handwritten signature in blue ink, appearing to read 'Prudence Poon'.

Prudence Poon
Project Manager
Telecom department

A handwritten signature in blue ink, appearing to read 'Victor Kwan'.

Victor Kwan
Manager
Telecom department

CONTENT:

Cover	Page 1 of 36	
Content	Page 2-3 of 36	
<u>1.0</u>	<u>General Details</u>	
1.1	Test Laboratory	Page 4 of 36
1.2	Applicant Details	Page 4 of 36
1.3	Equipment Under Test [EUT]	Page 5-6 of 36
1.4	Related Submittal(s) Grants	Page 6 of 36
<u>2.0</u>	<u>Technical Details</u>	
2.1	Investigations Requested	Page 7 of 36
2.2	Test Standards and Results Summary	Page 7 of 36
<u>3.0</u>	<u>Test Methodology</u>	
3.1	Radiated Emission	Page 8 of 36
3.2	Field Strength Calculation	Page 8 of 36
3.3	Conducted Emission	Page 8 of 36
<u>4.0</u>	<u>Test Results</u>	
4.1	Radiated Emission of Fundamental Frequency	Page 9-10 of 36
4.2	Spurious Radiated Emission	Page 11-27 of 36
4.3	Conducted Emission	Page 29 of 36
4.4	Bandwidth Measurement	Page 30 of 36
4.5	Average Factor	Page 31-35 of 36

5.0 List of Measurement Equipments

Page 36 of 36

Appendix A

Photos of Test Setup

Appendix B

External EUT Photos

Appendix C

Internal EUT Photos

1.0 General Details

1.1 Test Laboratory

Hong Kong Productivity Council
HKPC Building, 78 Tat Chee Avenue, Kowloon Tong,
Hong Kong

Registration Number: 90656

1.2 Applicant Details Applicant

Chaney Instrument Co.
AB 29/F Hai Ying Building, South Caitian Road,
Futian District, Shenzhen, China

Manufacturer

Chaney Instrument Co.
AB 29/F Hai Ying Building, South Caitian Road, Futian
District, Shenzhen, China

1.3 Equipment Under Test [EUT]

Description of EUT

Model Name:	Wireless Weather Station(Transmitter)
Brand Name:	Nil
Model Number:	00611
FCCID:	RNERF100MTX
Rating:	3.0Vd.c. (2x " AAA" size batteries)
Antenna Type:	Integral
Operated Frequency:	433.900MHz
No. of Channel:	1
Accessories and Auxiliary Equipment:	None
EUT Exercising Software:	None

General Operation of EUT

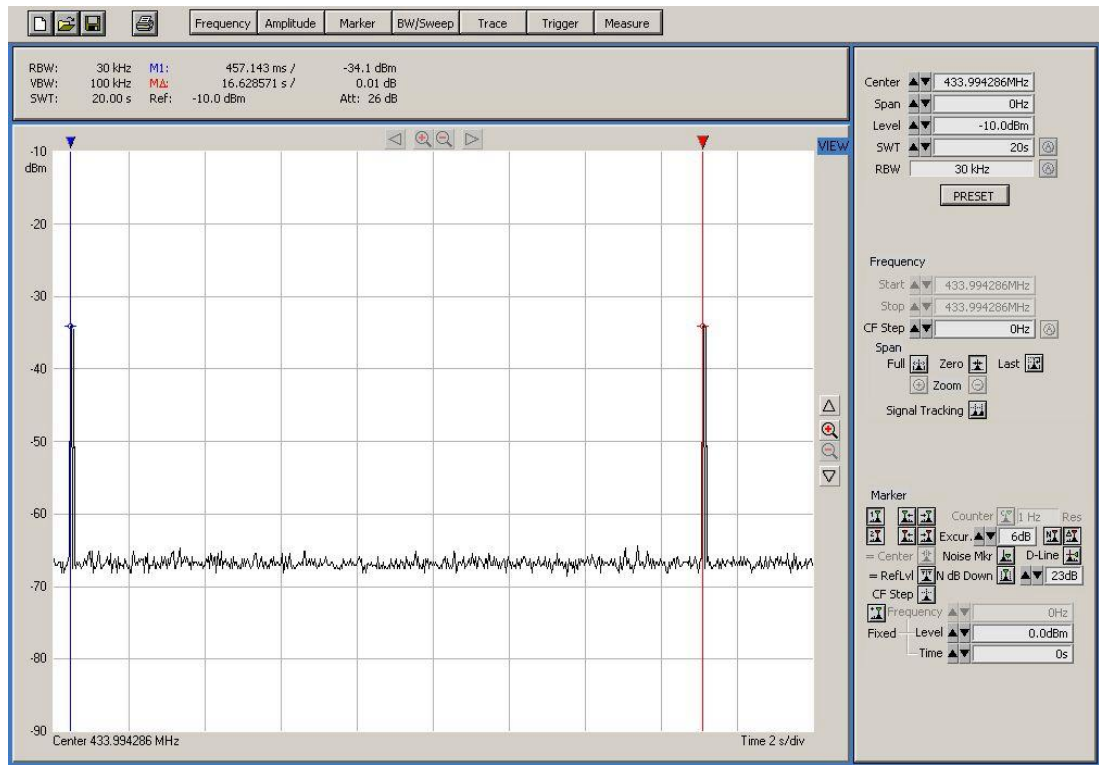
The Equipment Under Test (EUT) is a transmitter operated at 433.900MHz to detect the degree of temperature and humidity of the surrounding, and transmit this information to the wireless weather station.

Periodic Operation of EUT

The transmitter transmits signal for every 16 seconds, that mean the silence period must not less than 16 seconds. Each data packet is continuously transmitting for approximate 100ms in one transmission, it activated automatically shall cease transmission within 1 seconds after activation.

So the EUT is deemed to fulfill FCC section 15.231(e).

According to section 15.231(e), the EUT shall be provided with a means for automatically limiting operation so that the duration of each transmission shall not be greater than one second and the silent period between transmissions shall be at least 30 times the duration of the transmission but in no case less than 10 seconds.



1.4 Related Submittal(s) Grants

This is a single application for certification of the transmitter.

2.0 Technical Details

2.1 Investigations Requested

Perform ElectroMagnetic Interference measurement in accordance with FCC 47CFR [Codes of Federal Regulations] Part 15: 2006 and ANSI C63.4: 2003 for FCC Verification.

2.2 Test Standards and Results Summary Tables

EMISSION Results Summary						
Test Condition	Test Requirement	Test Method	Class / Severity	Test Result		
				Pass	Failed	N/A
Radiated Emission of Carrier Frequency	FCC 47CFR 15.231	ANSI C63.4:2003	N/A	<input checked="" type="checkbox"/>	<input type="checkbox"/>	<input type="checkbox"/>
Radiated Emission, 30MHz to 5GHz	FCC 47CFR 15.231	ANSI C63.4:2003	Class B	<input checked="" type="checkbox"/>	<input type="checkbox"/>	<input type="checkbox"/>
Conducted Emission on AC, 0.15MHz to 30MHz	FCC 47CFR 15.207	ANSI C63.4:2003	Class B	<input type="checkbox"/>	<input type="checkbox"/>	<input checked="" type="checkbox"/>
Bandwidth Measurement	FCC 47CFR 15.231	ANSI C63.4:2003	N/A	<input checked="" type="checkbox"/>	<input type="checkbox"/>	<input type="checkbox"/>

Note: N/A - Not Applicable

3.0 Test Methodology

3.1 Radiated Emission

The sample was placed 0.8m above the ground plane on a standard emission test site *. Measurements in both horizontal and vertical polarities were performed. During the test, each emission was maximized by: having the EUT continuously working, investigated all operating modes, rotated about all 3 axis (X, Y & Z) and considered typical configuration to obtain worst position, manipulating interconnecting cables, rotating turntable, varying antenna height from 1m to 4m in both horizontal and vertical polarizations. The emissions worst-case are shown in Test Results of the following pages.

*On a standard emission test site with a metal ground plane filed with the FCC pursuant to section 2.948 of the FCC rules, with Registration Number: 90656.

3.2 Field Strength Calculation

The field strength at 3 m was established by adding the meter reading of the spectrum analyzer to the factors associated with antenna correction factor, cable loss, preamplifiers and filter attenuation.

The equation is expressed as follow:

$$\text{FS} = \text{R} + \text{System Factor}$$
$$\text{System Factor} = \text{AF} + \text{CF} + \text{FA} - \text{PA}$$

Where FS = Net Field Strength in dBuV/m at 3 meters.

R = Reading of Spectrum Analyzer / Test Receiver in dBuV.

AF = Antenna Factor in dB.

CF = Cable Attenuation Factor in dB.

FA = Filter Attenuation Factor in dB.

PA = Preamplifier Factor in dB.

FA and PA are only be used for the measuring frequency above 1 GHz.

3.3 Conducted Emissions

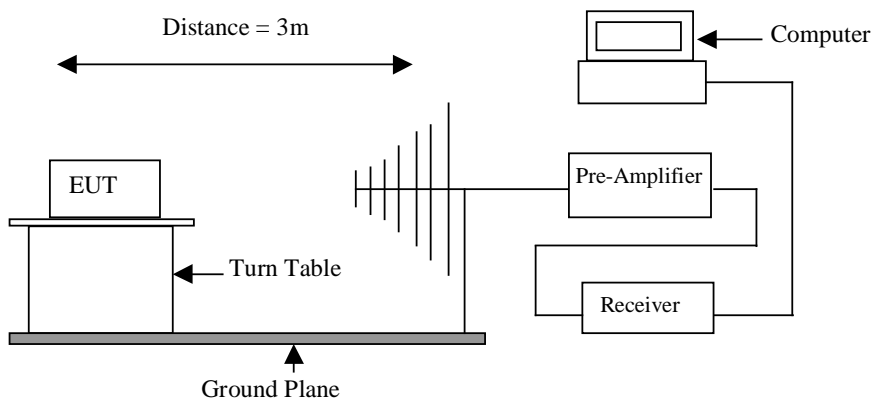
The test was performed in accordance with ANSI C63.4: 2003, with the following: initial measurements were performed in peak and average detection modes on the live line of personal computer, any emissions recorded within 30dB of the relevant limit lines were re-measured using quasi-peak and average detection on the live and neutral lines with the worst case recorded in the table of results.

4.0 Test Results

4.1 Radiated Emission of Fundamental Frequency

Test Requirement:	FCC part 15 section 15.231(e)
Test Method:	ANSI C63.4:2003
Test Date:	2007-03-12
Mode of Operation:	Transmitting mode.
Detector Function:	Peak
Measurement BW:	100 kHz

Test Setup:



Results: PASS

Radiated Emissions									
Value	Emissions Frequency MHz	E-Field Polarity	Reading dBµV/m	System Factor dB	Field Strength at 3m dBµV/m	Average Factor dB	Net Field Strength at 3m dBµV/m	Limit dBµV/m	Delta to Limit dBµV/m
PK	433.994	V	65.67	18.23	83.9	0	83.9	92.86	-8.96
AV	433.994	V	65.67	18.23	83.9	-14.7	69.2	72.86	-3.66
PK	433.994	H	51.97	18.23	67.2	0	70.2	92.86	-22.66
AV	433.994	H	51.97	18.23	67.2	-14.7	55.5	72.86	-17.36

Remark:

- Calculated measurement uncertainty: ±5.0dB
- Refer to section 4.4 for average factor calculation.

Limits for Fundamental Frequency: [Section 15.231(e)]:

Fundamental Frequency [MHz]	Field Strength of Fundamental [µV/m]	Field Strength of Fundamental [dBµV/m]
433.994	4398.347	72.86

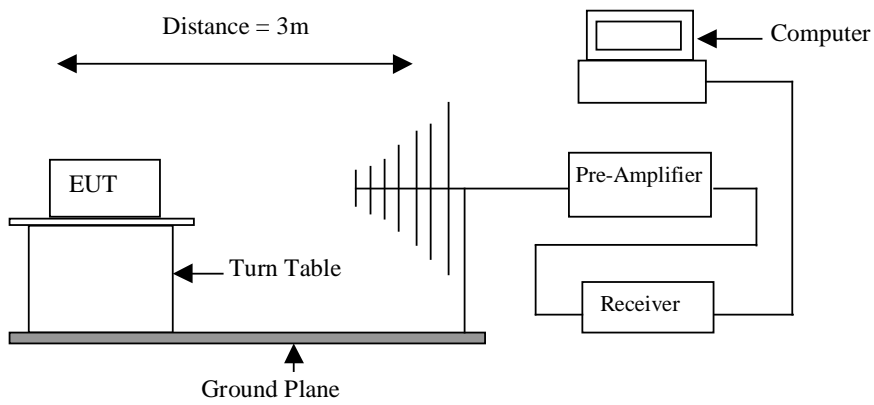
Compliance with the limits in the above table may be based on the use of measurement instrumentation with a CISPR peak detector.



4.2 Spurious Radiated Emission

Test Requirement:	FCC part 15 section 15.231(e)
Test Method:	ANSI C63.4:2003
Test Date:	2007-03-12
Mode of Operation:	Transmitting mode.
Detector Function:	Peak
Measurement BW:	100 kHz

Test Setup:



Results: PASS

Radiated Emissions									
Value	Emissions Frequency	E-Field Polarity	Reading	System Factor	Field strength at 3m	Average Factor	Net Field Strength at 3m	Limit	Delta to Limit
	MHz		dB μ V/m	dB	dB μ V/m	dB	dB μ V/m	dB μ V/m	dB μ V/m
AV	1735.92	V	41.69	-6.39	35.30	-14.70	20.60	52.87	-32.27
AV	2170.04	V	51.24	-4.29	46.95	-14.70	32.25	52.87	-20.62
AV	2603.92	V	42.97	-2.92	40.05	-14.70	25.35	52.87	-27.52
AV	*4340.00	V	45.41	1.79	47.20	-14.70	32.50	54.00	-21.50
AV	2170.08	H	46.98	-4.29	42.69	-14.70	27.99	52.87	-24.88
AV	2603.84	H	39.86	-2.92	36.94	-14.70	22.24	52.87	-30.63
AV	*4340.08	H	41.13	1.79	42.92	-14.70	28.22	54.00	-25.78

Note: No further spurious emissions found between 30 MHz and lowest internal used/generated frequency.

Remark (*) : Radiated emissions which fall in the restricted bands as defined in Section 15.205(a).

Remark:

-Calculated measurement uncertainty: ± 5.0 dB.

-Refer to section 4.4 for average factor calculation.

Limits for Radiated Emission [Section 15.231(e)]:

Fundamental Frequency [MHz]	Field Strength of Spurious Emission [μ V/m]	Field Strength of Spurious Emission [dB μ V/m]
433.994	439.834	52.86

Spurious emissions shall be attenuated to the average (or, alternatively, CISPR quasi-peak) limits shown in this table or to the general limits shown in section 15.209, whichever permits a higher field strength.

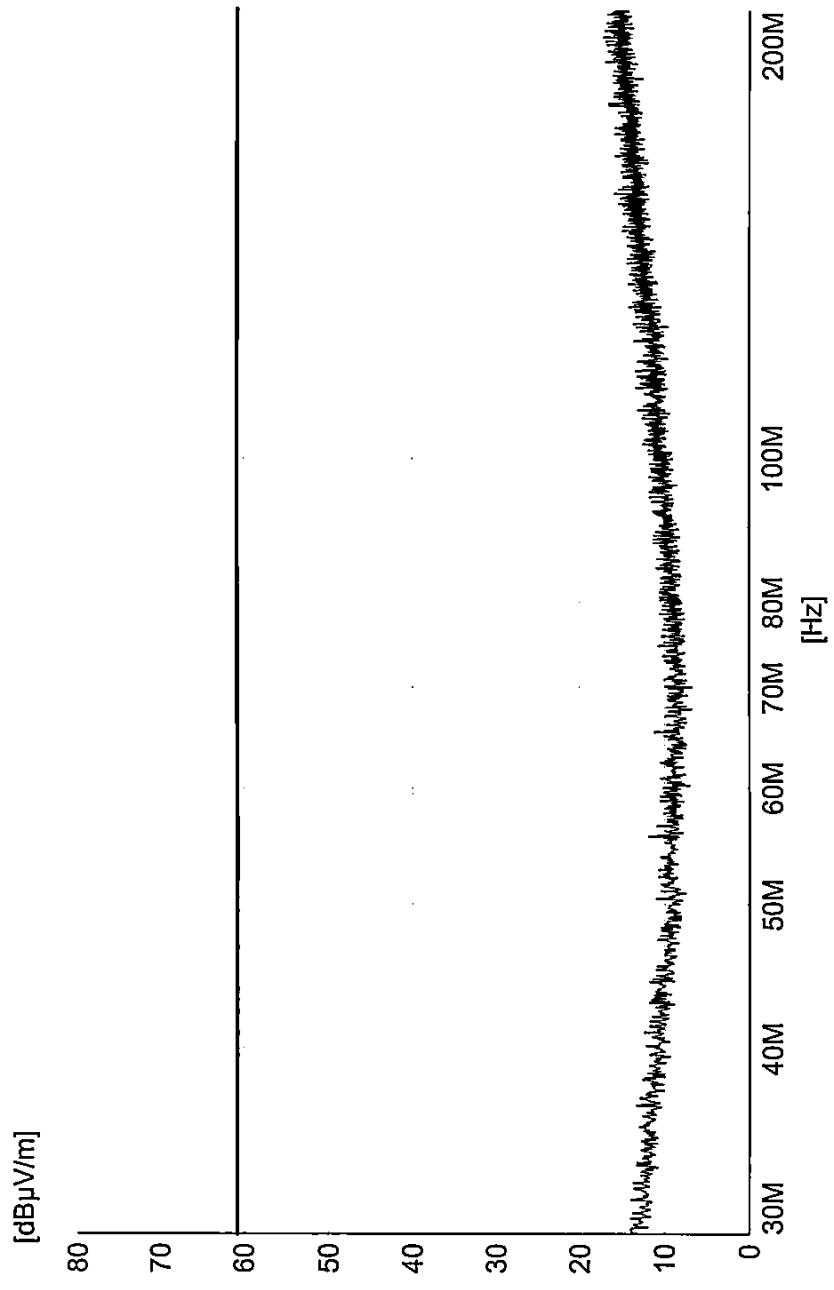
Limit for Radiated Emission Falling in Restricted Bands [Section 15.209]:

Frequency (MHz)	Field Strength [μ V/m]	Field Strength [dB μ V/m]
30-88	100	40.0
88-216	150	43.5
216-960	200	46.0
960-2500	500	54.0

Radiated emissions, which fall in the restricted bands, as defined in Section 15.205(a), must also comply with the radiated emission limits specified in Section 15.209.

The emission limits shown in the above table are based on measurement employing a CISPR quasi-peak detector and above 1000MHz are based on measurements employing an average detector.

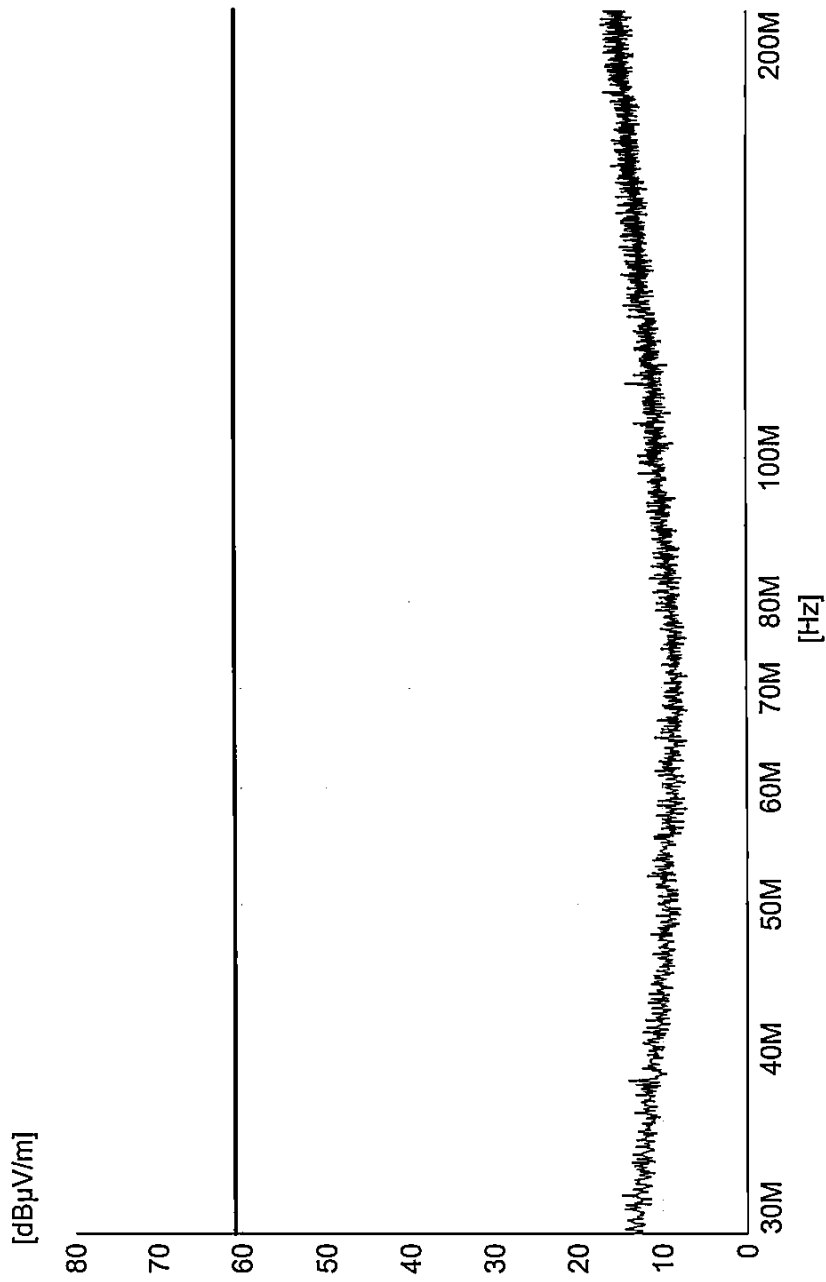
- Result data graph is attached at the next pages for reference.



— MES 08473A03.PK
 — LIM FCC 15.231 (TUV)

(x
 v



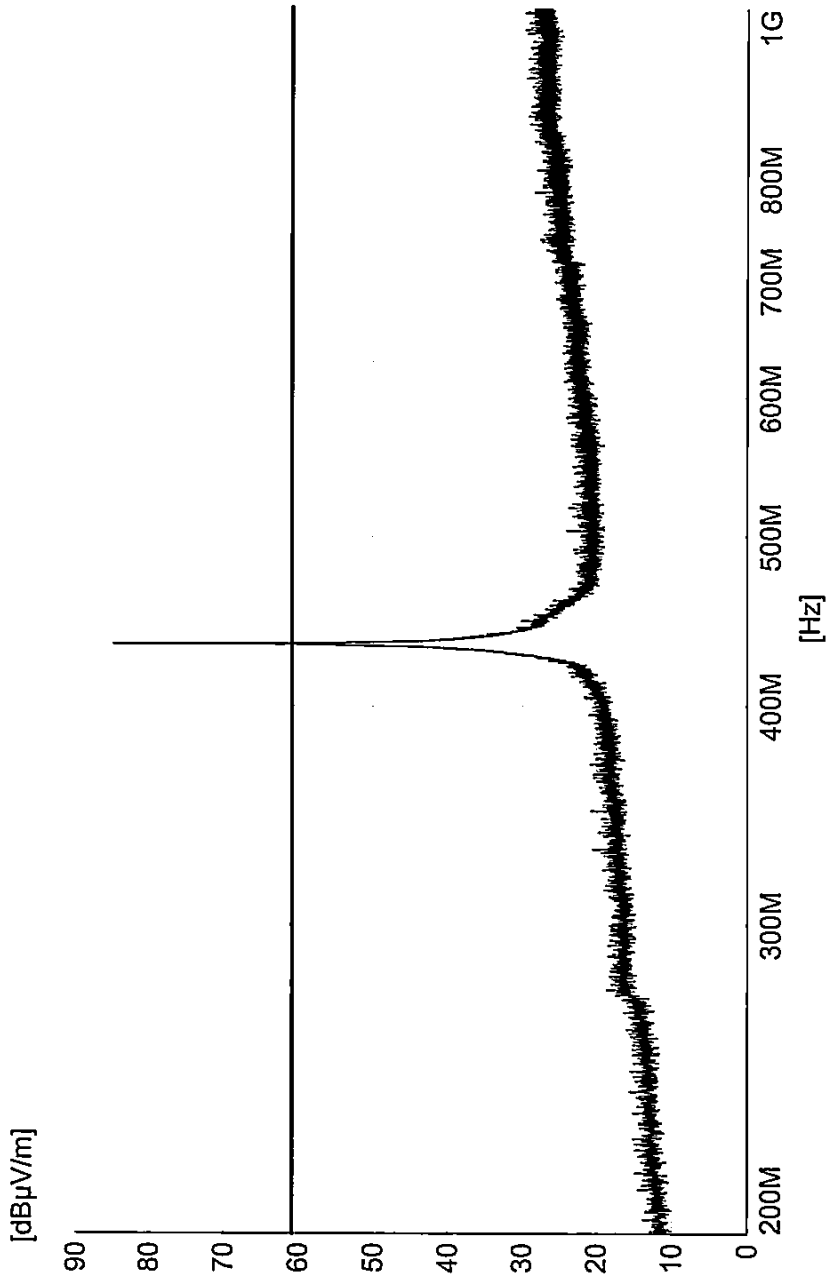


— MES 08473A04.PK
 — LIM FCC 15.231 (TUV)

1x

H





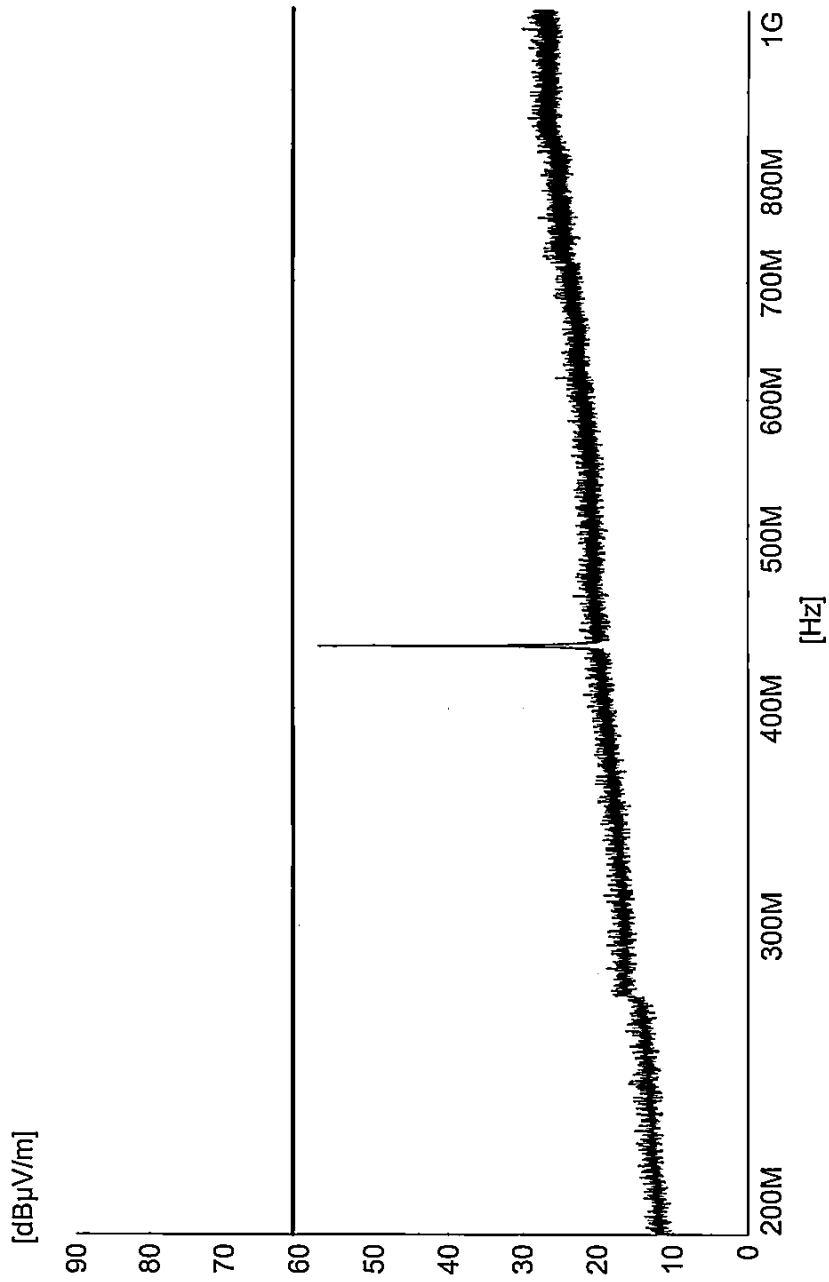
18

✓

MES 08473A01.PK
 LIM FCC 15.231 (TUV)

Page 1 3/12/2007 11:15AM



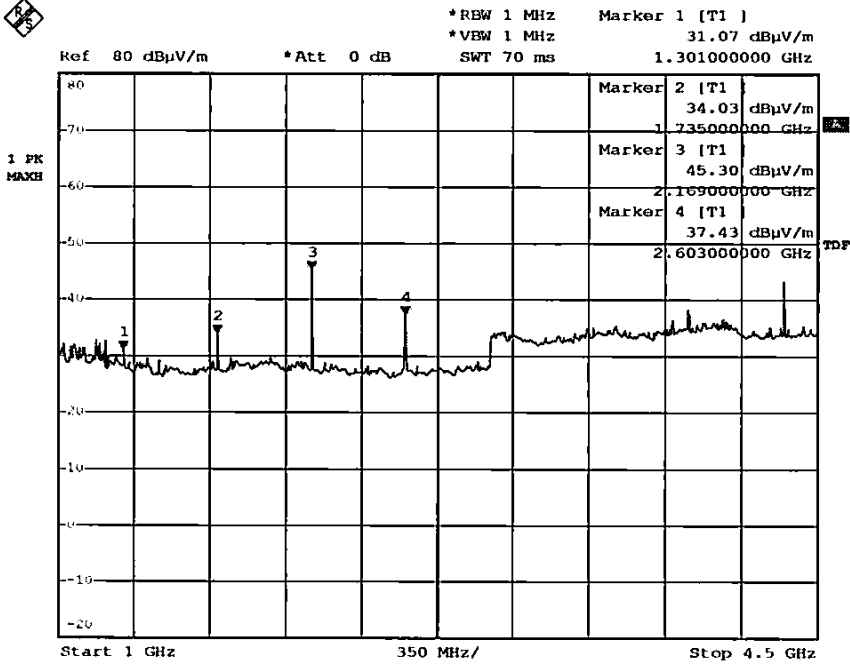


— MES 08473A02.PK
 — LIM FCC 15.231 (TUV)

1x

H

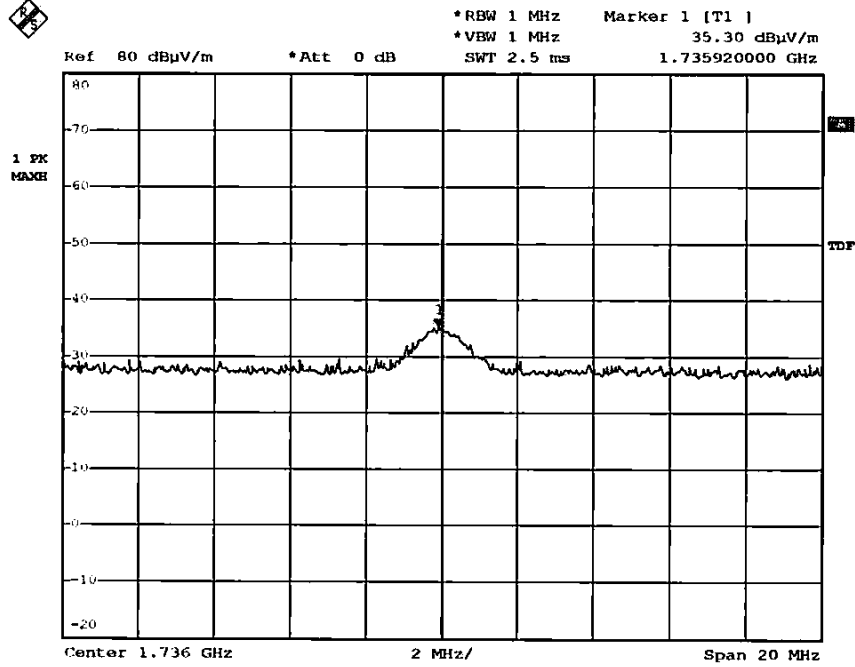




Date: 12.MAR.2007 11:49:19

(Tx)

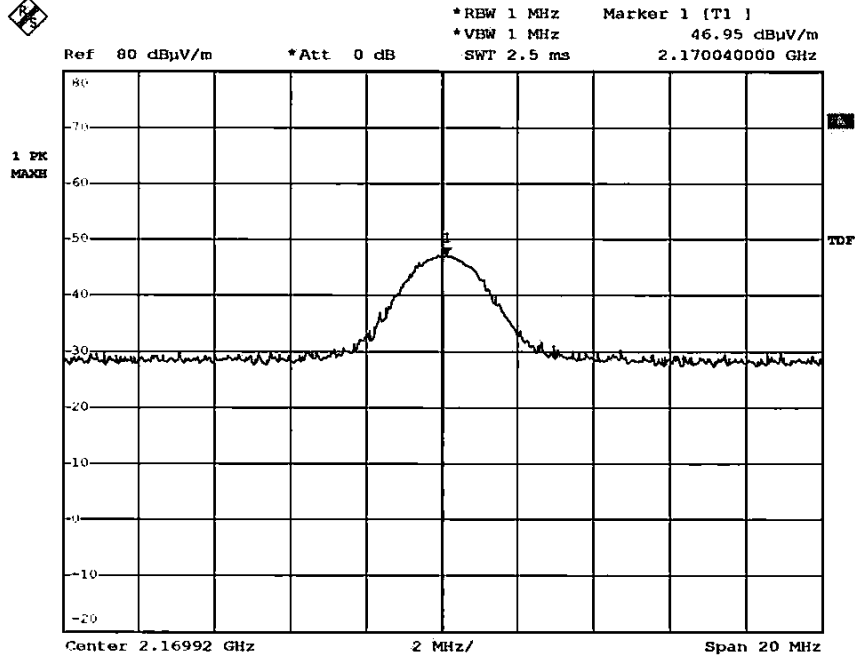
✓



Date: 12.MAR.2007 11:53:05

Tx

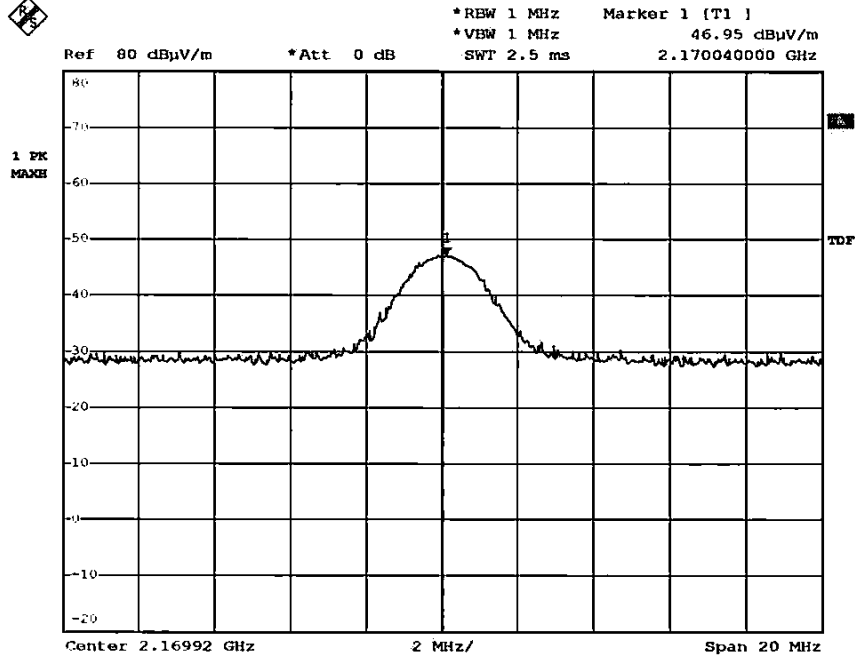
Y



Date: 12.MAR.2007 11:55:08

(Tx)

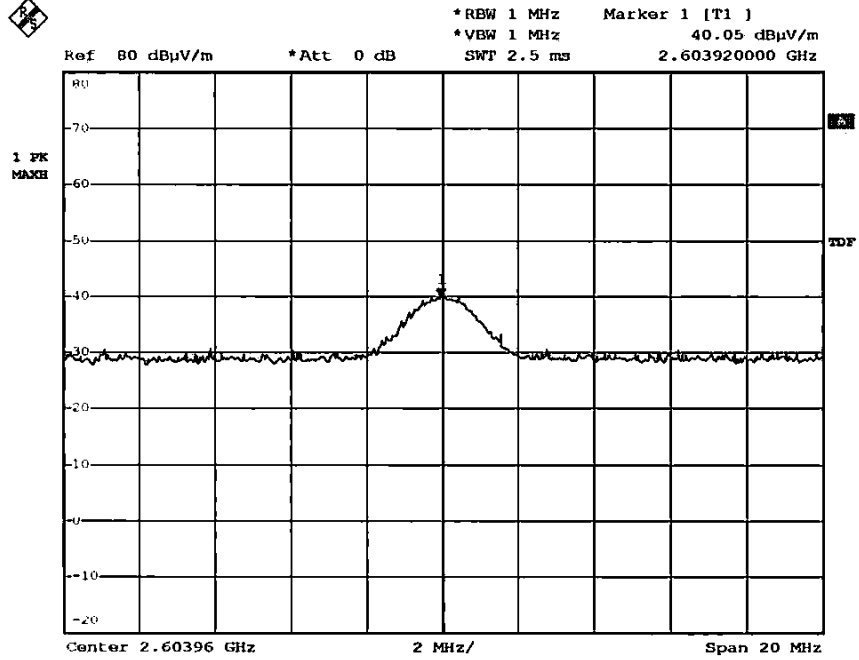
✓



Date: 12.MAR.2007 11:55:08

(Tx)

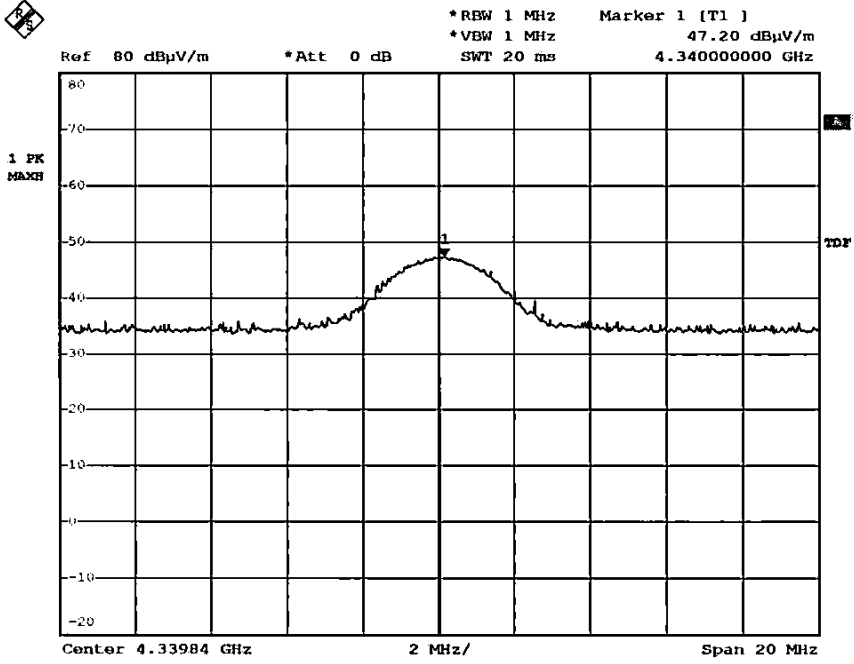
✓



Date: 12.MAR.2007 11:57:32

(Tx)

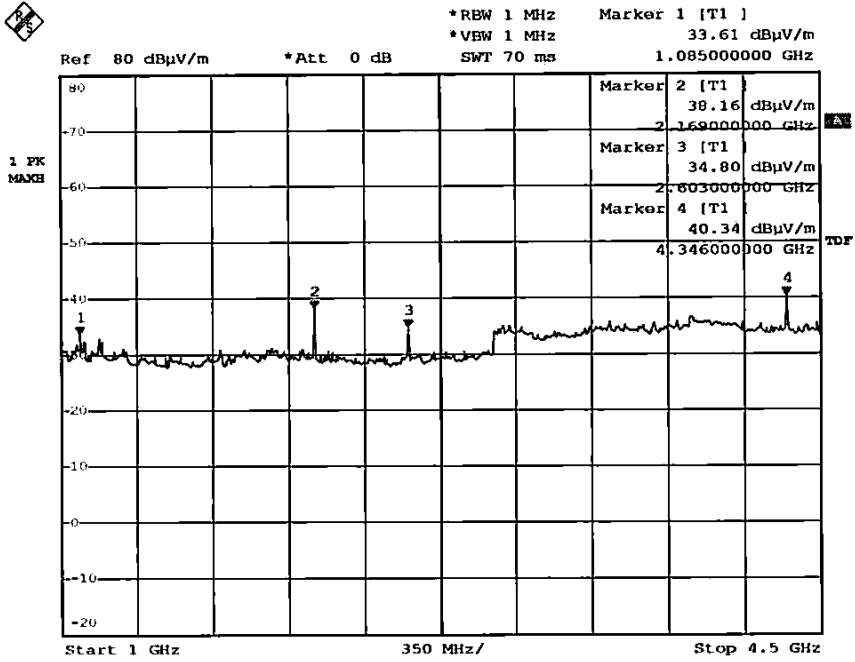
✓



Date: 12.MAR.2007 12:00:05

Tx
✓

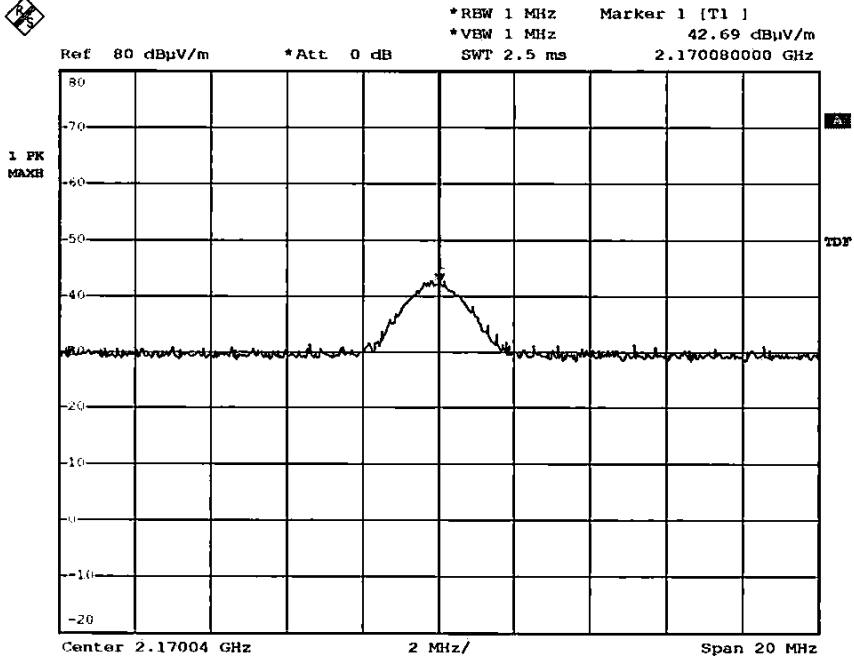




Date: 12.MAR.2007 12:01:57

Tx
H

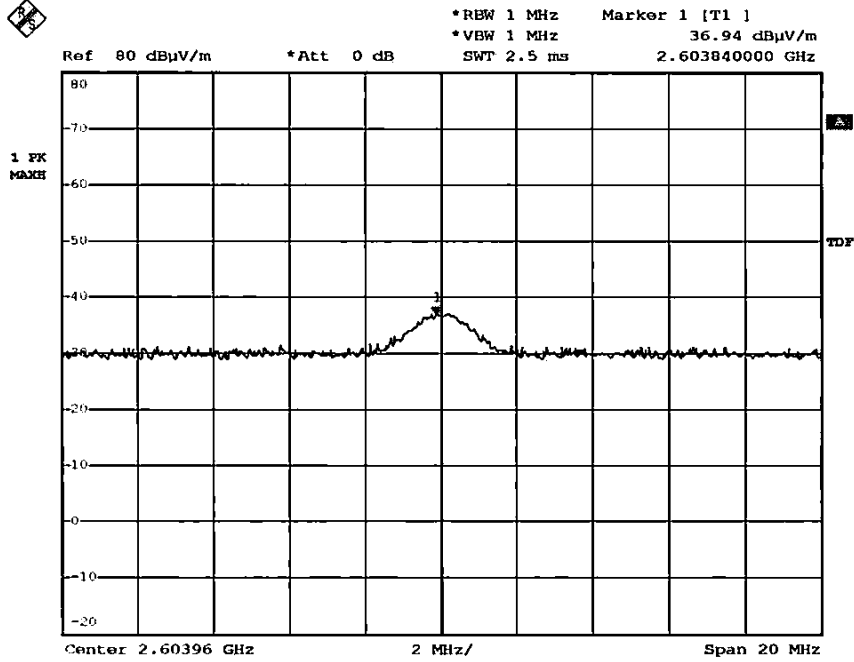




Date: 12.MAR.2007 12:05:44

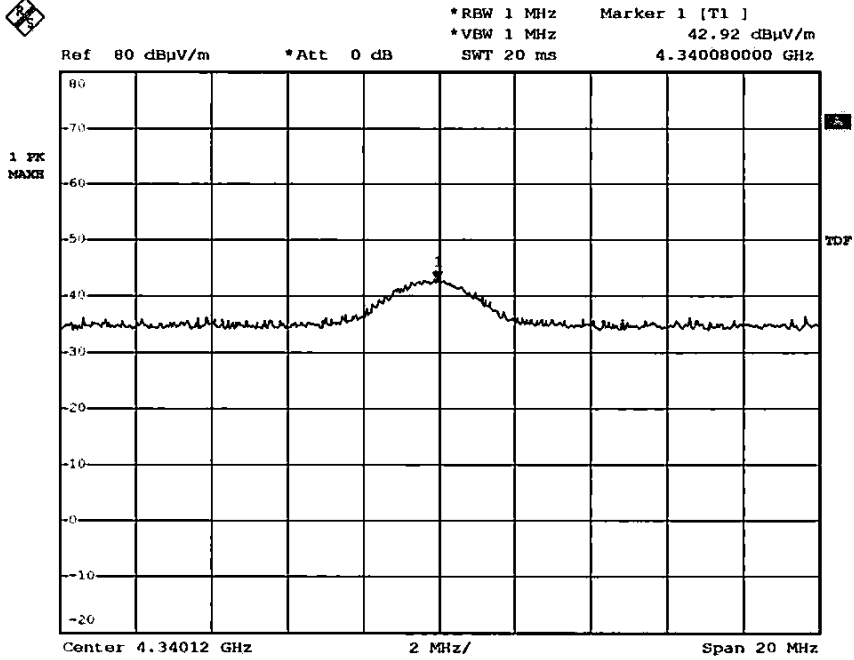
(Tx)
H





Date: 12.MAR.2007 12:07:43

②
H



Date: 12.MAR.2007 12:09:31

TX
H

4.3 Conducted Emissions (0.15MHz to 30MHz)

Test Requirement: FCC part 15 Section 15.207 Class B
Test Method: ANSI C63.4:2003
Test Date: ---
Mode of Operation: ---

Results: N/A

Note : This testing is not applicable for the battery operated EUT.

Limits for Conducted Emission [Section 15.207]:

Frequency Range [MHz]	Quasi-Peak Limit [dB μ V]	Average Limit [dB μ V]
0.15-0.5	66 to 56*	56 to 46*
0.5-5.0	56	46
5.0-30.0	60	50

* Decreases with the logarithm of the frequency.

Remarks:
Calculated measurement uncertainty: ± 2.8 dB

4.4 Bandwidth Measurement

Test Requirement:	FCC part 15 section 15.231 (c)
Test Method:	ANSI C63.4:2003
Test Date:	2007-03-16
Mode of Operation:	Transmitting mode.
Detector Function:	Peak

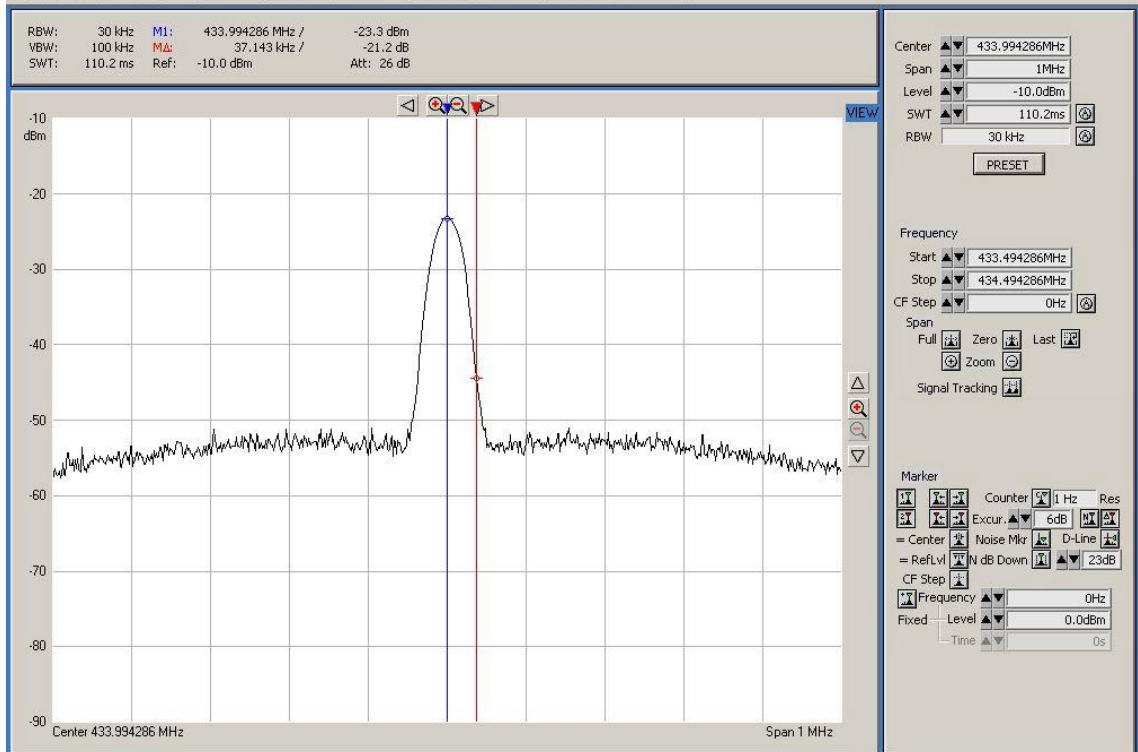
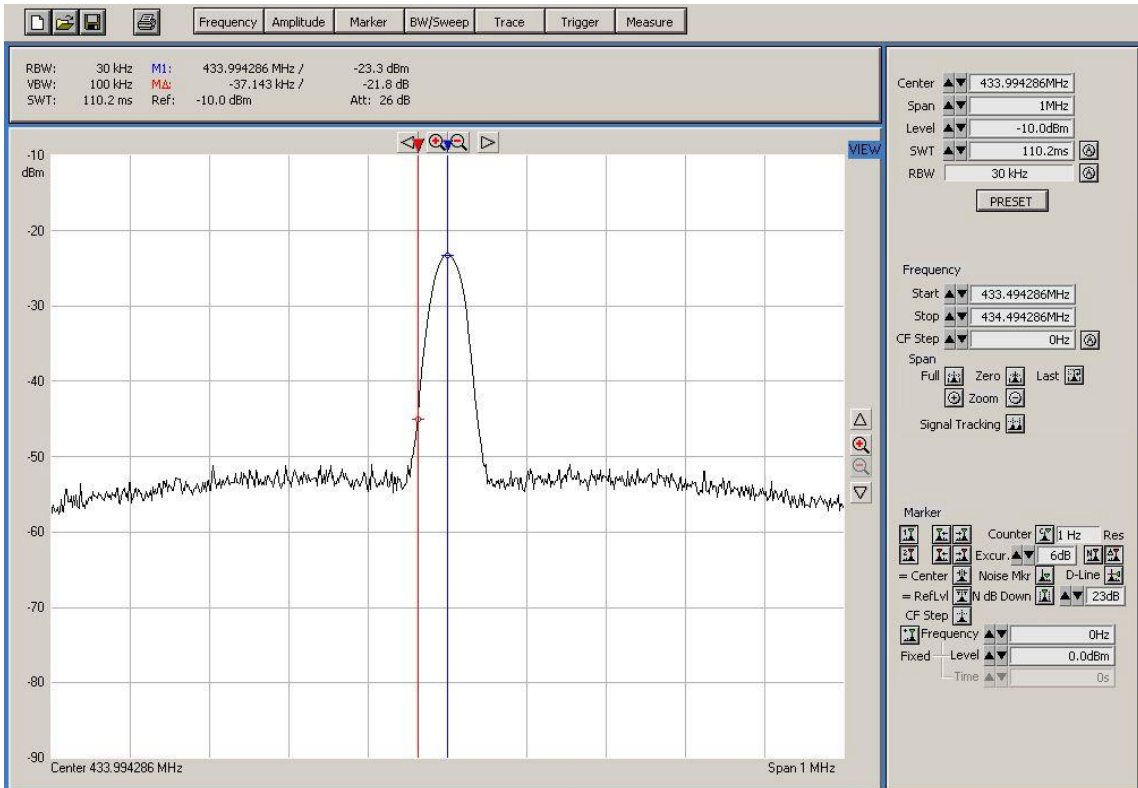
Results: PASS

Refer to the data graph, the 20dB points at lower edge and at higher edge are 433.9571MHz and 433.9942MHz, so that is 37.143KHz and 37.143KHz respectively apart from the centre modulated carrier, the bandwidth of the emission is 0.017% of the centre frequency. Therefore, the EUT meets the requirement of section 15.231(c).

Limit for Bandwidth [Section 15.231 (c)]

The bandwidth of the emission shall be no wider than 0.25% if the center frequency for devices operating above 70MHz and below 900MHz.

Test Result: Result data graph is shown at the next pages for reference.



4.5 Average Factor

Average factor in dB = $20 \log (\text{duty cycle})$

When the radiated emission limits are expressed in terms of the average value of the emission, and pulsed operation is employed, the measurement field strength shall be determined by averaging over one complete pulse train, including blanking intervals, as long as the specification for output field strengths in accordance with the FCC rules specify measurements with an average detector.

The duty cycle is the total signal on time per one transmission.

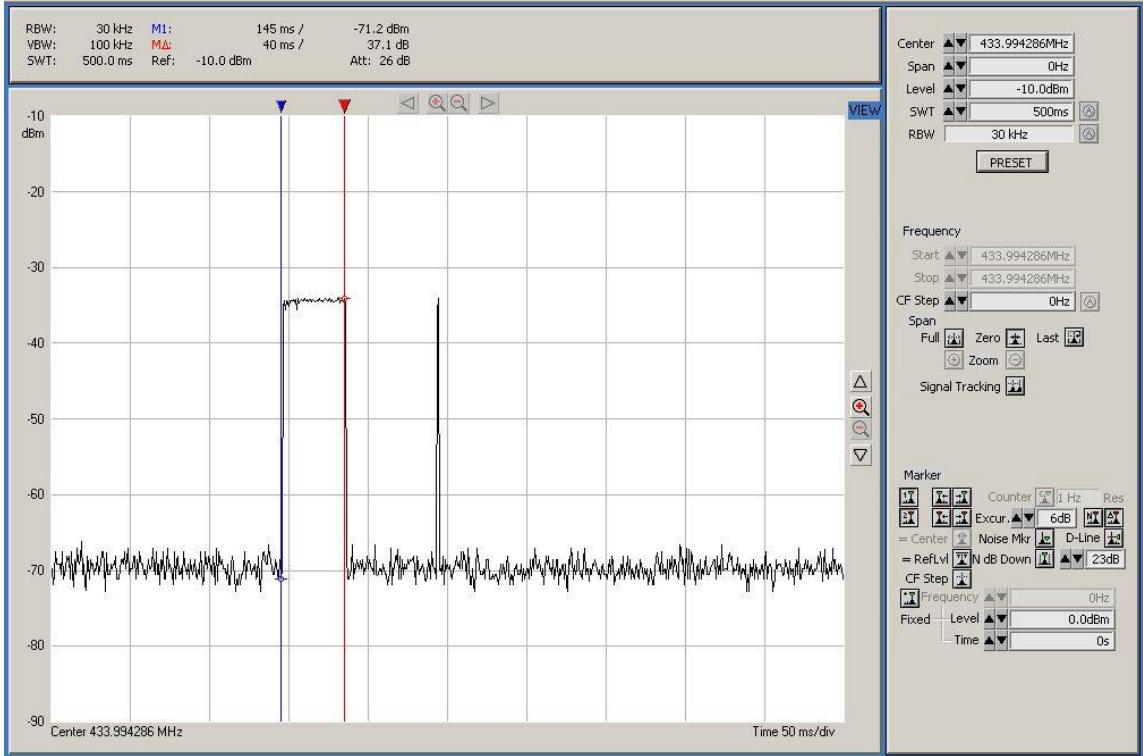
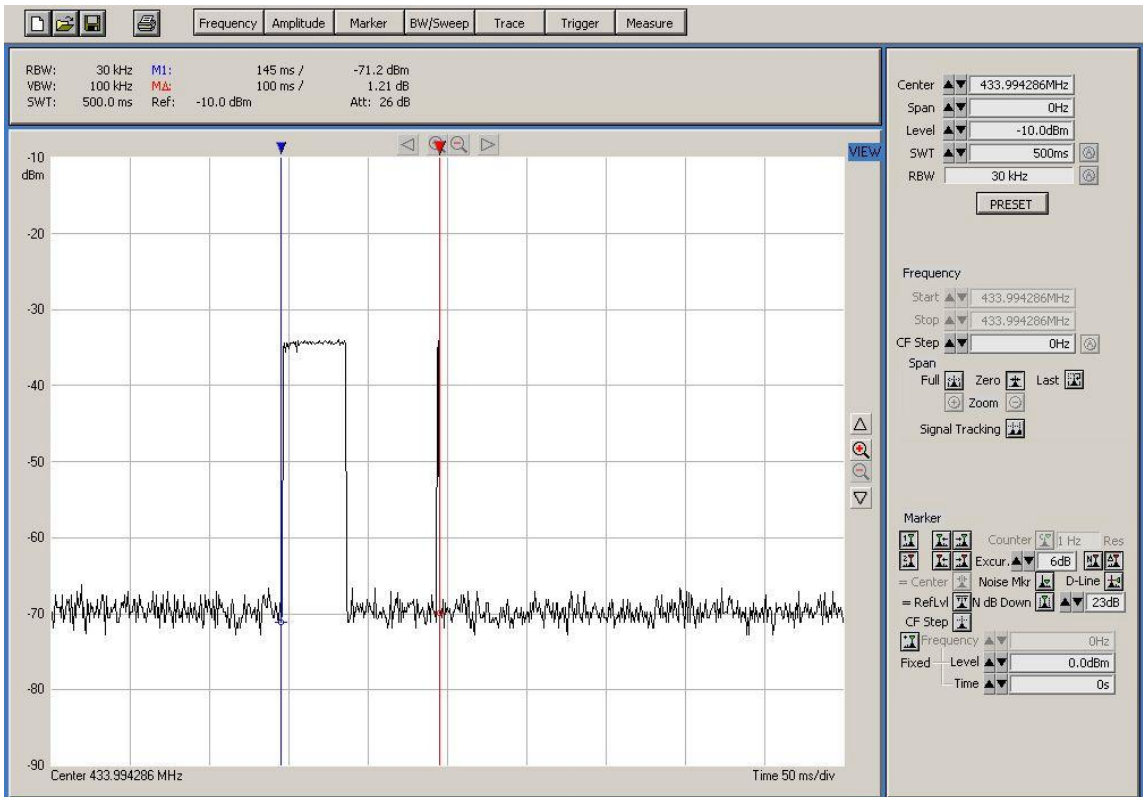
The duration of one cycle = 100ms

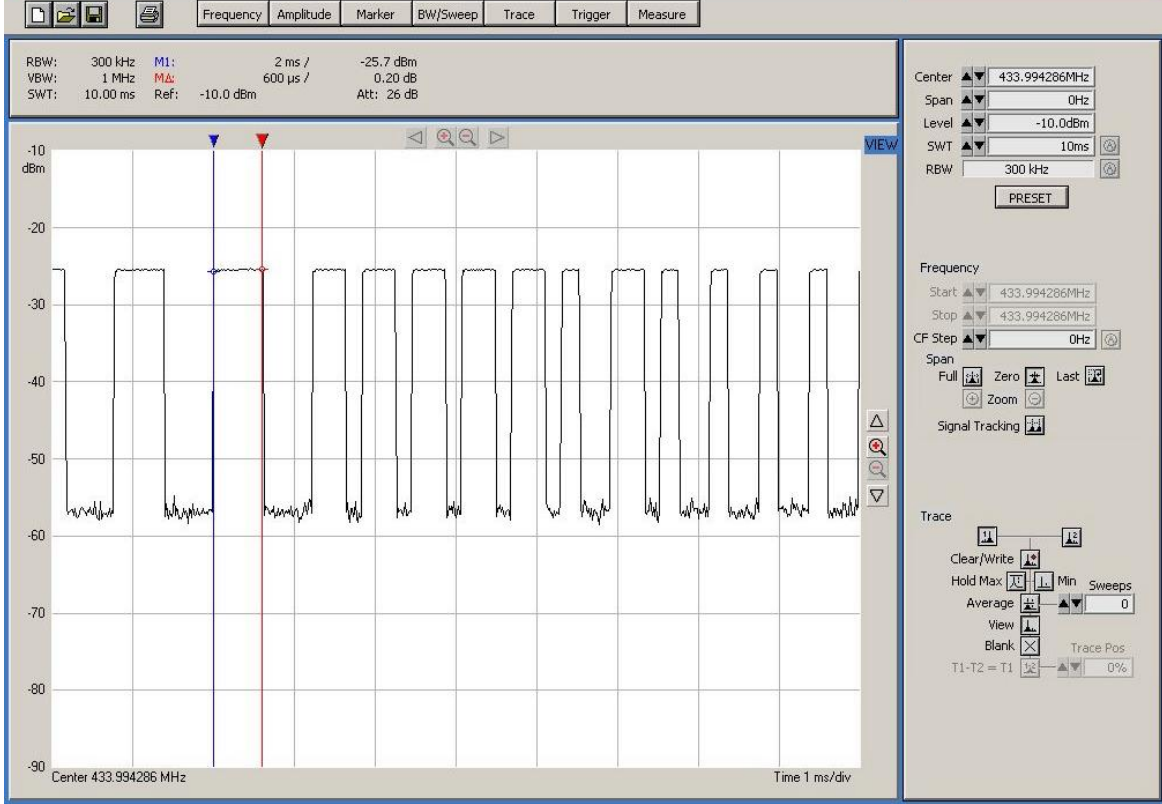
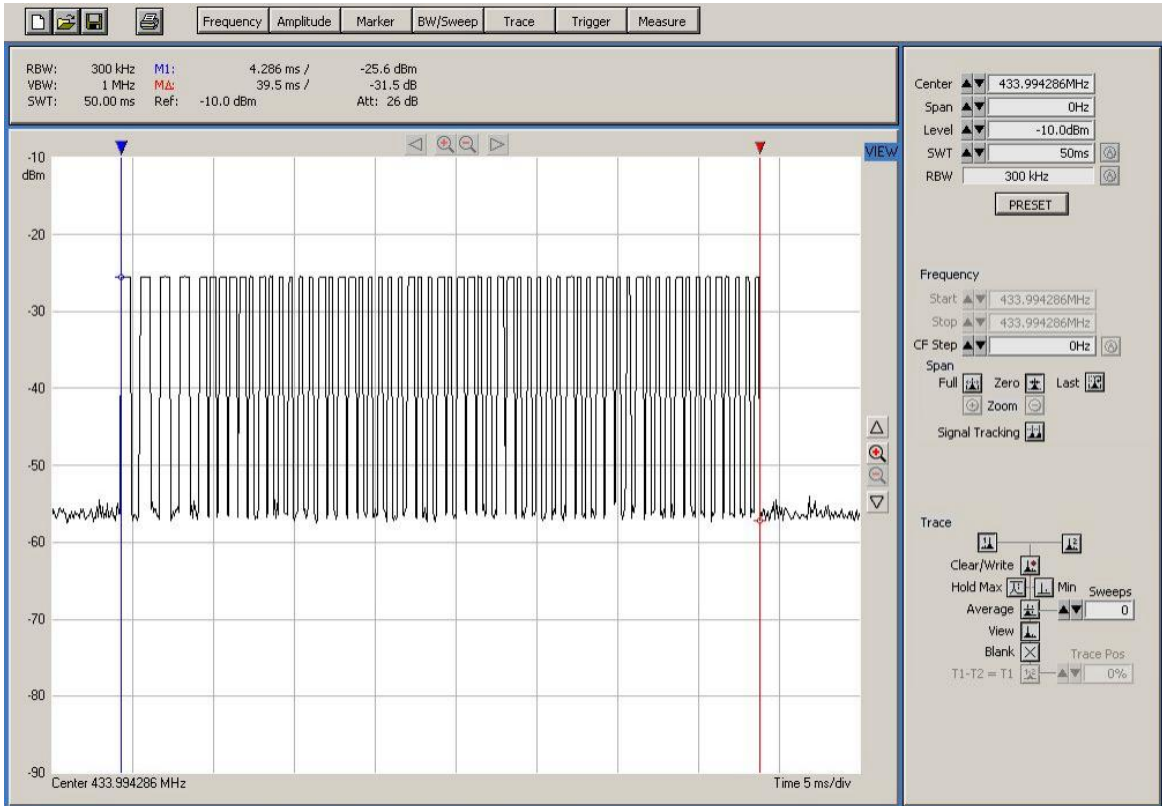
Effective period of the cycle = $(4 \times 600\mu\text{s} + 22 \times 400\mu\text{s} + 35 \times 200\mu\text{s}) + (1 \times 214 \mu\text{s})$

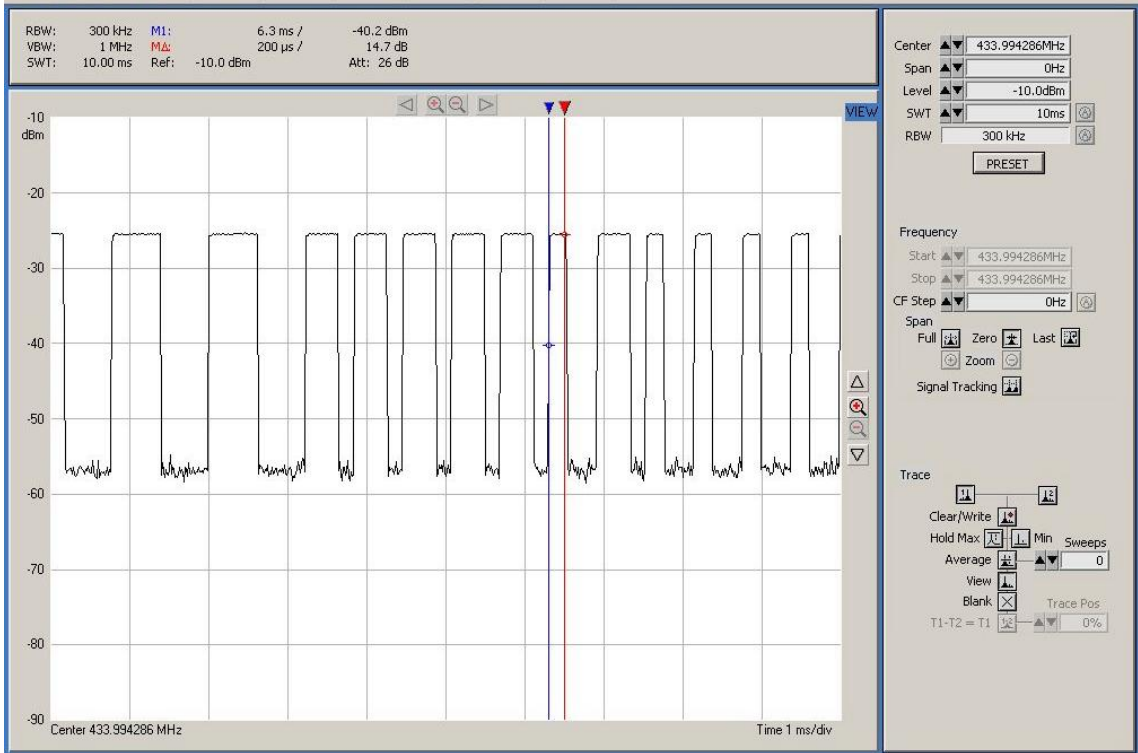
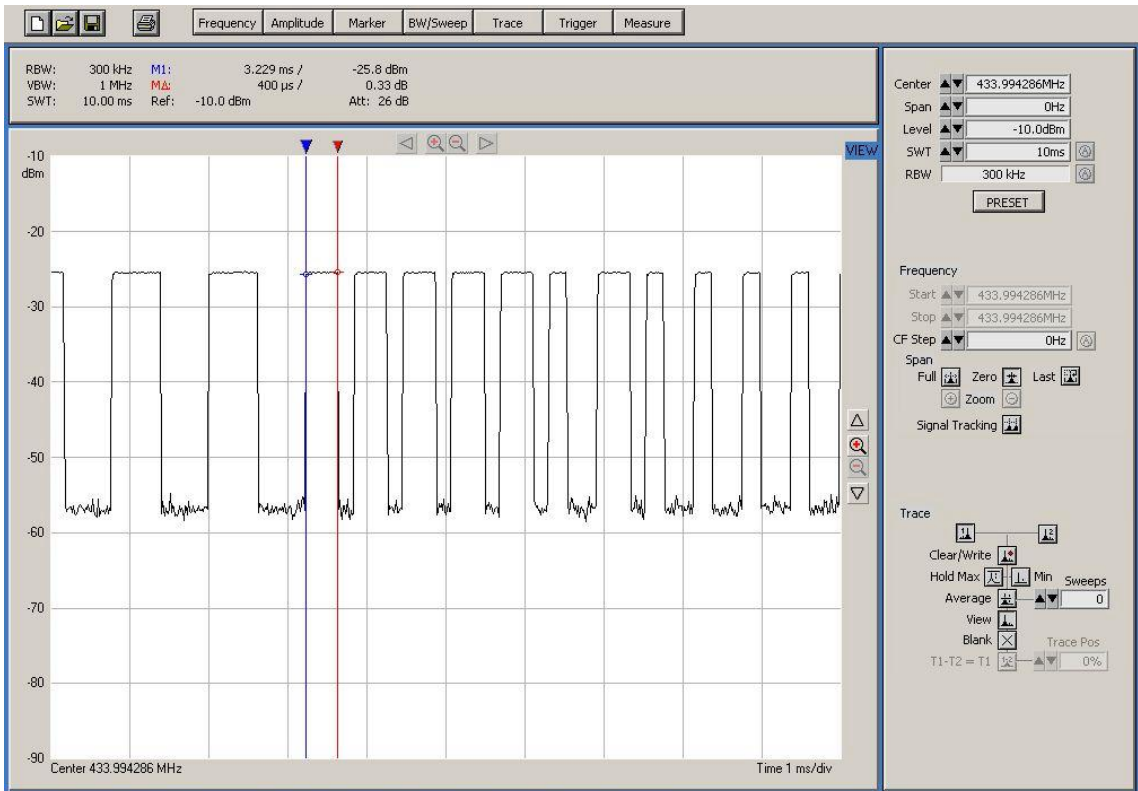
Duty cycle = $18.414\text{ms} / 100\text{ms}$
= 0.18414

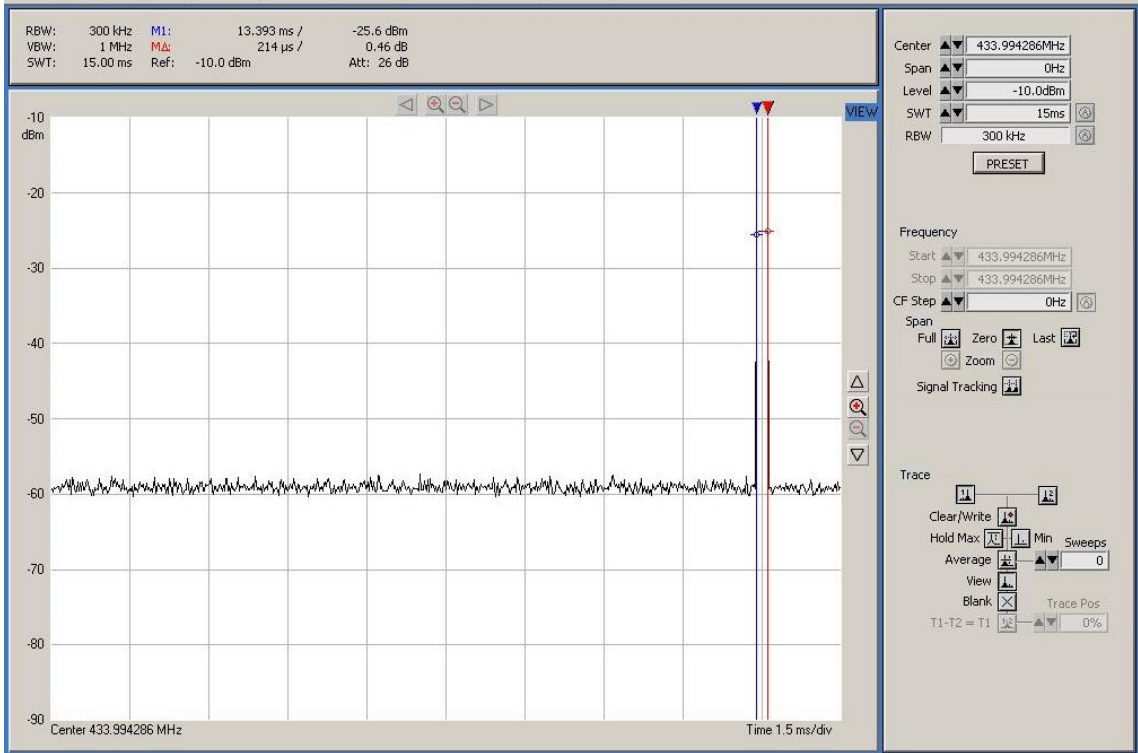
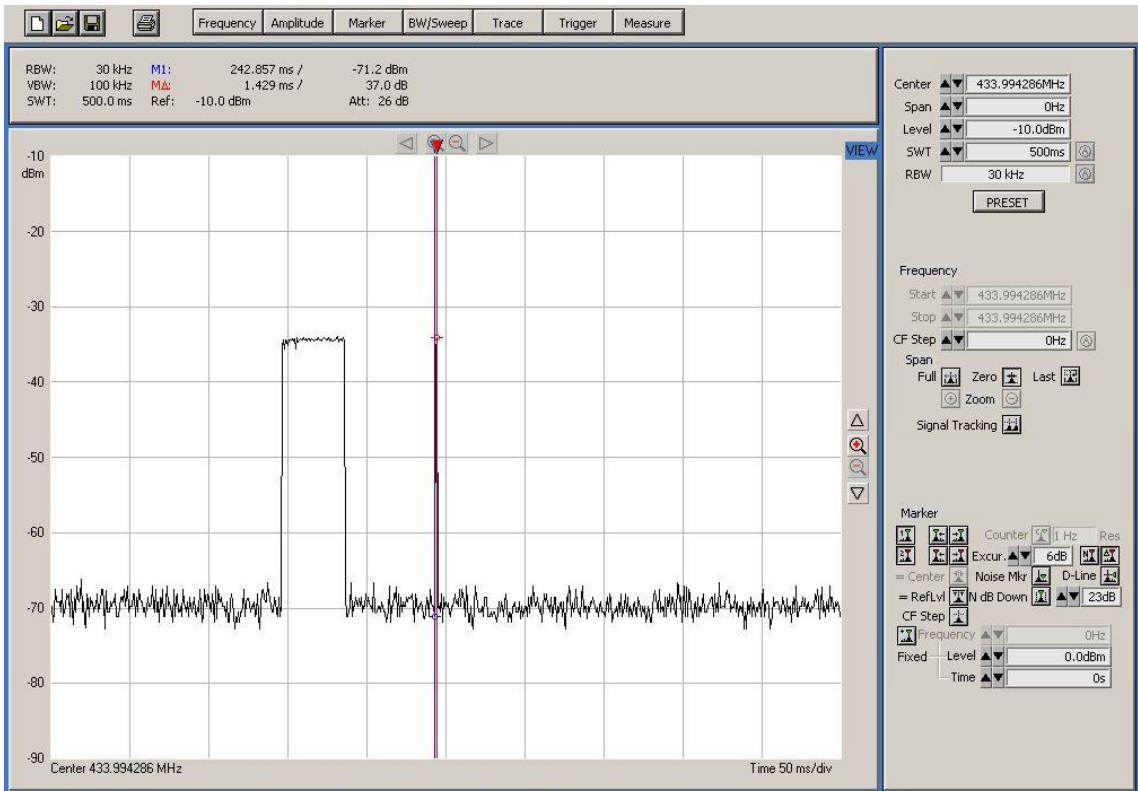
Therefore, the averaging factor is $20 \log (0.18414)$
= -14.7dB

Refer to the following graph for the detail.









5.0 List of Measurement Equipment

Radiated Emission and Bandwidth Measurement

EQP NO.	DESCRIPTION	MANUFACTURER	MODEL NO.	SERIAL NO.	LAST CAL	CAL DUE
EMC209	Semi-anechoic Chamber	Frankonia	N/A	N/A	6-Apr-06	6-Apr-07
EMC017	Test Receiver	R & S	ESVS30	842807/009	25-Aug-06	25-Aug-07
EMC040	Bi-conical Antenna	R & S	HK116	841489/016	8-Feb-06	8-Feb-08
EMC045	Log Periodic Antenna	R & S	HL223	841516/020	3-Feb-06	3-Feb-08
EMC542	11M Coaxial Cable with ferrites	EMCO	C17105-01	N/A	15-Jul-06	15-Jul-07
EMC138	Loop Antenna	Chase	LLA6142	1019	7-Jun-06	7-Jun-07
EMC184	Horn Antenna	EMCO	3115	9002-3347	2-Feb-06	2-Feb-08
EMC556	Spectrum Analyser	R & S	FSP 30	100416	30-Mar-06	30-Mar-07
60/T-02-05-022	Spectrum Analyser	R & S	FS 300	101335	30-Mar-05	30-Mar-07

Remarks:

CM Corrective Maintenance
N/A Not Applicable or Not Available
TBD To Be Determined