

SKL21 SDS

2 in 1 Labeling

Tablet Labeling Back Side

Top Edge Model/型号: SKL21-SDS
FCC ID: RMXSKL21SDS



Intel®2 in 1 Development System. ENGINEERING SAMPLE - NOT FOR SALE OR LEASE 工程样品,禁止售卖或租借
INTEL CONFIDENTIAL – Commercial Trade Secret of Intel Corporation. Intel and the Intel logo are trademarks of Intel Corporation in the U.S. and/or other countries.

Copyright © 2015, Intel Corporation. All rights reserved. *Other names and brands may be claimed as the property of others.

Not for use in residential areas outside of United States or European Union member states. 不能在美国或欧盟国以外的居住地范围使用

This device complies with part 15 of the FCC Rules. Operation is subject to the condition that this device does not cause harmful interference.

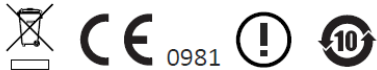
Class 1 Laser Device – Classified EN/IEC 60825-1:2007 Input Voltage/直流输入: DC Input 20V■2.25A For applicable power supply, refer to the user instructions 对于适用的电源供应器, 参阅用户指令

This device is for engineering evaluation and development use as permitted in your region. It shall not be marketed, or offered for sale or lease. 此设备在容许的地区用作工程样品评估和开发, 它不应该用来销售, 租借使用

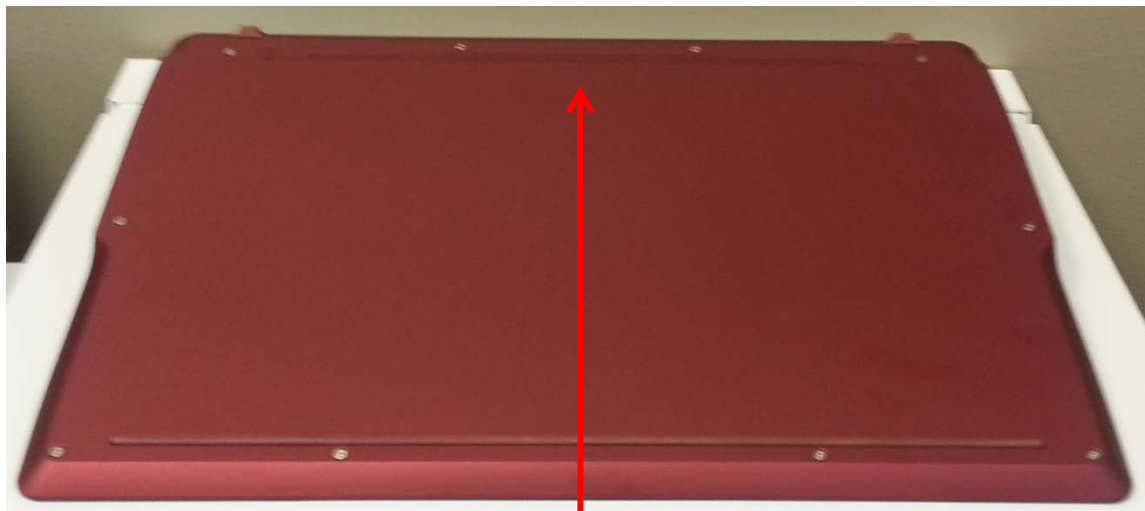
TUV IEC60950-1/A1:2009 TO ENSURE SAFETY, REFER TO THE SAFETY DOCUMENT 为确保安全请阅读安全文档 Assembled in the United States/装配在美国

Intel Corporation 生产厂家: 英特尔公司 Attn: Corporate Quality
2200 Mission College Blvd. Santa Clara, CA USA 95054

This device has not been authorized by network cellular service providers. Authorization to operate this device on a given live carrier network requires the explicit approval from the respective cellular service provider.



Base Labeling Bottom



Intel® 2 in 1 Development System. ENGINEERING SAMPLE - NOT FOR SALE OR LEASE 工程样品,禁止售卖或租借

INTEL CONFIDENTIAL – Commercial Trade Secret of Intel Corporation. Intel and the Intel logo are trademarks of Intel Corporation in the U.S. and/or other countries.

Copyright © 2015, Intel Corporation. All rights reserved. *Other names and brands may be claimed as the property of others.

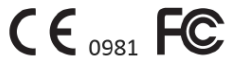
This device is for engineering evaluation and development use as permitted in your region. It shall not be marketed, or offered for sale or lease. 此设备在容许的地区用作工程样品评估和开发, 它不应该用来销售, 租借使用

Not for use in residential areas outside of United States or European Union member states. 不能在美国或欧盟国以外的居住地范围使用

Input Voltage/直流输入: DC Input 20V ■ 2.25A For applicable power supply, refer to the user instructions 对于适用的电源供应器, 参阅用户指令

TUV IEC60950-1/A1:2009 TO ENSURE SAFETY, REFER TO THE SAFETY DOCUMENT 为确保安全请阅读安全文档 Assembled in the United States/装配在美国

Model/型号: SKL21BASE



Intel Corporation 生产厂家: 英特尔公司 Attn: Corporate Quality
2200 Mission College Blvd. Santa Clara, CA USA 95054