
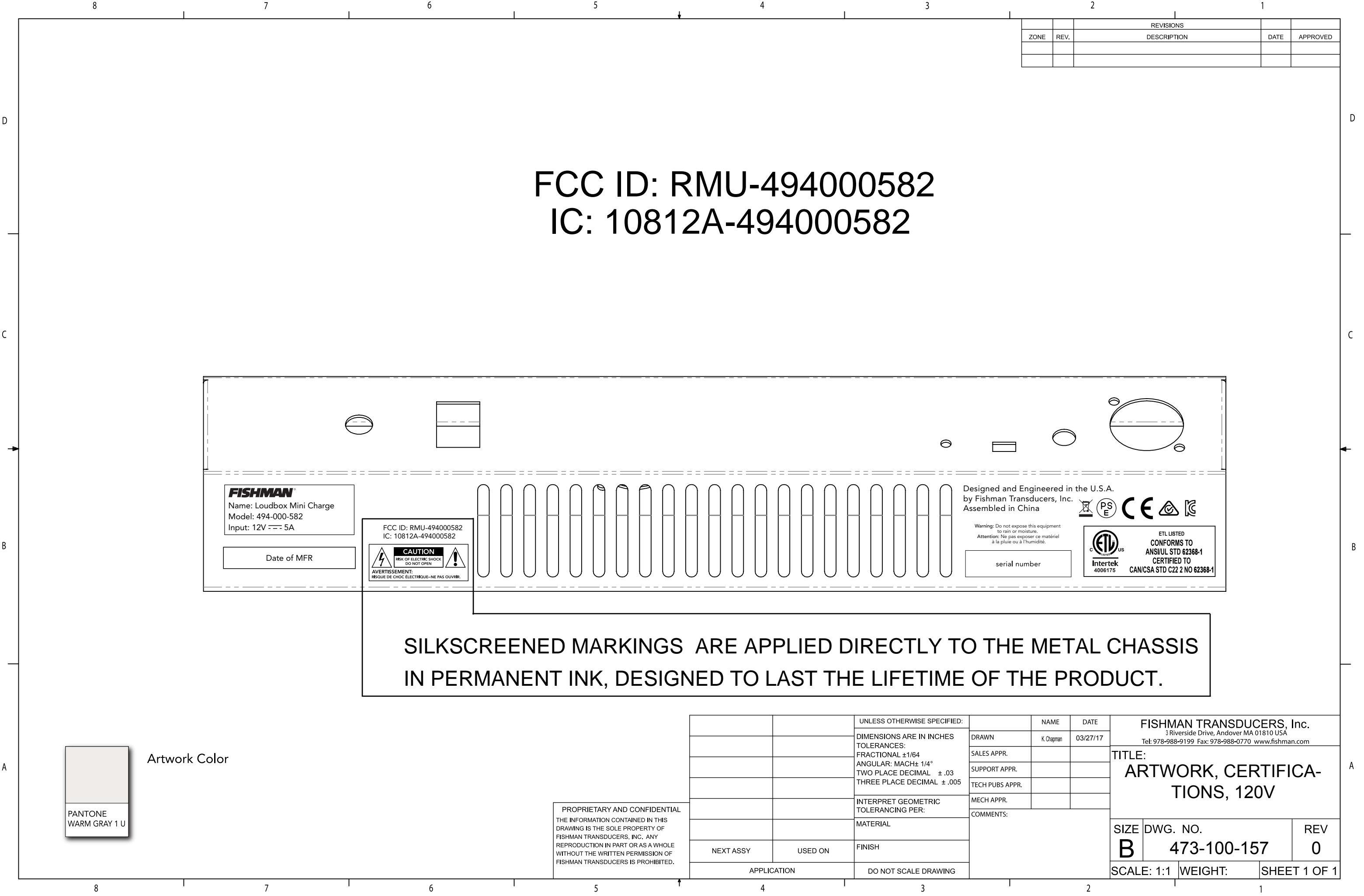


REVISIONS				
ZONE	REV.	DESCRIPTION	DATE	APPROVED
	1	REMOVED 1 MASKED AREA. ADDED 2 MASKED AREAS.	07/18/17	PPCO 3485

ITEM	PART NO.	REV	DESCRIPTION	QTY
1	331-103-714	A	NUT, SELF CLINCHING, M5	2
2	331-103-980	0	STANDOFF, BLIND, PEM, M3 X 20MM	5
3	331-103-982	0	NUT, BLIND, SELF CLINCHING, M6	6
4	472-100-216	0	CHASSIS, RAW FORMED, LB CHARGE 30	1

- NOTES: (UNLESS OTHERWISE SPECIFIED)
- THE 3D CAD GENERATED PART MODEL IS TO BE CONSIDERED THE PRIMARY SOURCE FOR ALL FEATURES AND GEOMETRY. DIMENSIONS SHOWN ARE FOR INSPECTION PURPOSES ONLY**
- MATERIAL: SEE PARTS LIST
 - FINISH:
2a: SANDBLAST TEXTURE, EXTERIOR SURFACES ONLY.
2b: TO BE PAINTED PER PAINT SAMPLE PROVIDED HS-A77040 (DARK BROWN), SATIN FINISH REFER TO SHEET 2 FOR PAINT MASKED AREAS
 - SILK SCREEN PER FISHMAN ARTWORK #: 473-100-155_r0 GRAPHICS SHOWN ARE FOR REFERENCE ONLY.
 - SILK SCREEN PER FISHMAN ARTWORK #: 473-100-156_r0 GRAPHICS SHOWN ARE FOR REFERENCE ONLY.
 - SILK SCREEN PER FISHMAN ARTWORK #: 473-100-157_r0 GRAPHICS SHOWN ARE FOR REFERENCE ONLY.
 - SAMPLE PARTS MUST BE APPROVED BY FISHMAN PRIOR TO PRODUCTION AND / OR PURCHASE
 - DIMENSIONS MARKED "■" ARE DEEMED CRITICAL AND MUST MEET THE SPECIFIED DIMENSION AND TOLERANCE.
 - PRIMARY DIMENSIONS ARE IN MILLIMETERS SECONDARY DIMENSIONS "[]" ARE IN INCHES
 - TOLERANCES:
X.X = ±.4mm [X.XX] = ±.02 inches
X.XX = ±.12mm [X.XXX] = ±.005 inches
ANGLES = ±1°
 - ALL MATERIALS AND FINISHES SPECIFIED WITHIN THIS DOCUMENT MUST BE RoHS COMPLIANT.

UNLESS OTHERWISE SPECIFIED:		NAME		DATE	
DIMENSIONS ARE IN MILLIMETERS		M. SCHOW		03/30/17	
TOLERANCES:					
FRACTIONAL ±.154		CHECKED			
3 PLACE DECIMAL ±.8 mm		ENG APPR			
1 PLACE DECIMAL ±.4 mm		MFG APPR			
2 PLACE DECIMAL ±.12 mm					
MATERIAL		G.A.			
FINISH					
<div>PROPRIETARY AND CONFIDENTIAL THE INFORMATION CONTAINED IN THIS DRAWING IS THE SOLE PROPERTY OF FISHMAN TRANSDUCERS, INC.. ANY REPRODUCTION IN PART OR AS A WHOLE WITHOUT THE WRITTEN PERMISSION OF FISHMAN TRANSDUCERS, INC. IS PROHIBITED.</div>					
<div><div><p>3 Riverside Drive, Andover, MA 01810 USA Tel: 978-988-9199 Fax: 978-988-0770 www.fishman.com</p></div><div>TITLE: CHASSIS, LB CHARGE 30, BROWN</div></div>					
SIZE		DWG. NO.		REV	
D		472-500-216		1	
SCALE: 1:2		SHEET 1 OF 2			



REVISIONS				
ZONE	REV.	DESCRIPTION		DATE
				APPROVED



Artwork Color

PROPRIETARY AND CONFIDENTIAL
THE INFORMATION CONTAINED IN THIS
DRAWING IS THE SOLE PROPERTY OF
FISHMAN TRANSDUCERS, INC. ANY
REPRODUCTION IN PART OR AS A WHOLE
WITHOUT THE WRITTEN PERMISSION OF
FISHMAN TRANSDUCERS IS PROHIBITED.

		UNLESS OTHERWISE SPECIFIED:		NAME	DATE	FISHMAN TRANSDUCERS, Inc. 3 Riverside Drive, Andover MA 01810 USA Tel: 978-988-9199 Fax: 978-988-0770 www.fishman.com		
		DIMENSIONS ARE IN INCHES TOLERANCES: FRACTIONAL ±1/64 ANGULAR: MACH± 1/4° TWO PLACE DECIMAL ± .03 THREE PLACE DECIMAL ± .005	DRAWN	K. Chapman	03/27/17	TITLE: ARTWORK, CERTIFICATIONS, 120V		
			SALES APPR.					
			SUPPORT APPR.					
			TECH PUBS APPR.					
			MECH APPR.					
		INTERPRET GEOMETRIC TOLERANCING PER:	COMMENTS:			SIZE DWG. NO. REV B 473-100-157 0		
		MATERIAL						
NEXT ASSY	USED ON	FINISH						
APPLICATION		DO NOT SCALE DRAWING				SCALE: 1:1 WEIGHT: SHEET 1 OF 1		