

Rhein Tech Laboratories, Inc.
360 Herndon Parkway
Suite 1400
Herndon, VA 20170
<http://www.rheintech.com>

Client: TMI-USA, Inc.
Model #: ZIGBEEBASE1
Standards: FCC 15.247/IC RSS-210
ID's: RMK-RECZIGB1/10839A-RECZIGB1
Report #: 2013024

Appendix N: Internal Photographs

Please refer to the following pages.



Figure 1: Receiver PCB Top View

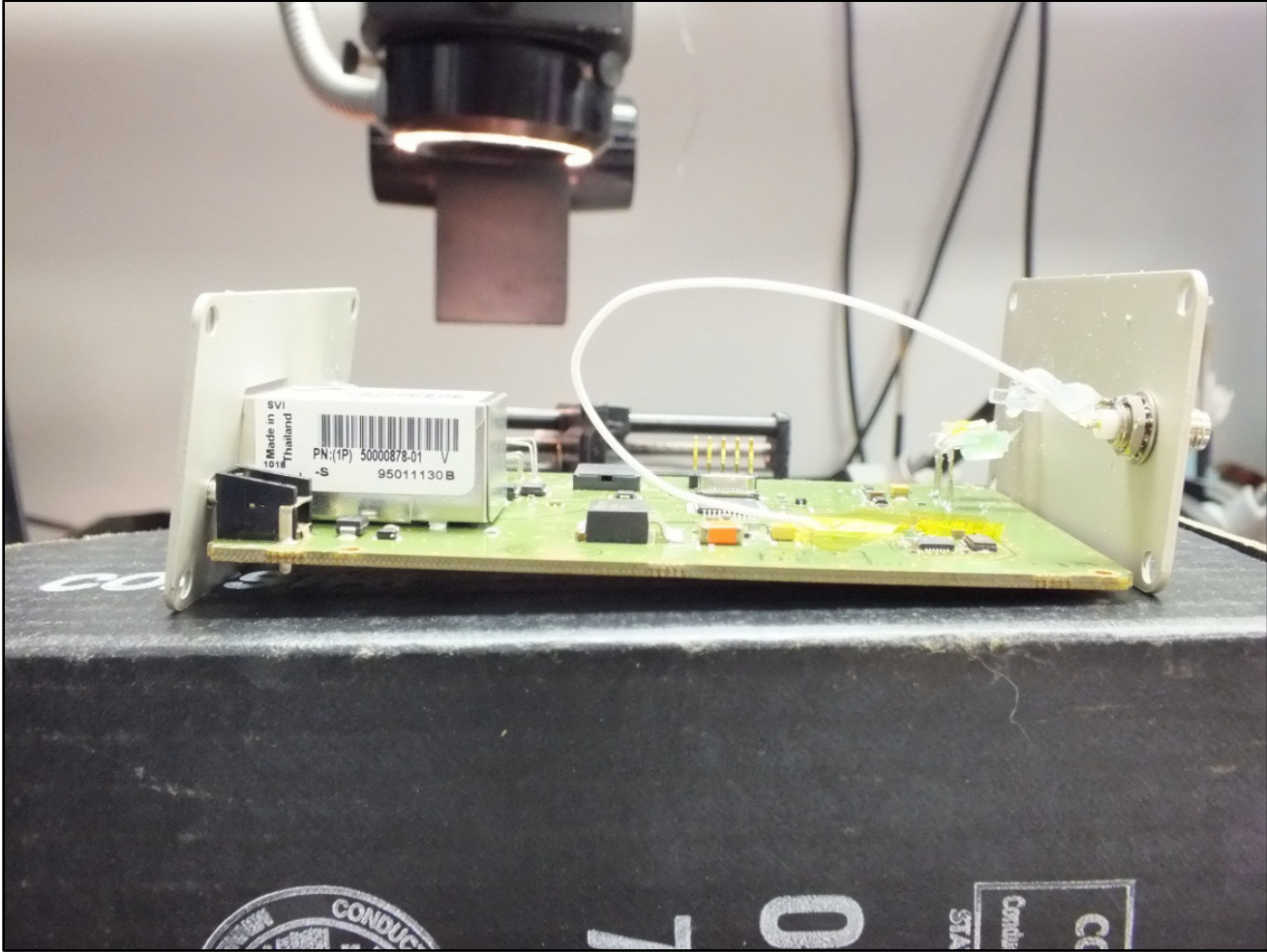


Figure 2: Receiver PCB Side View

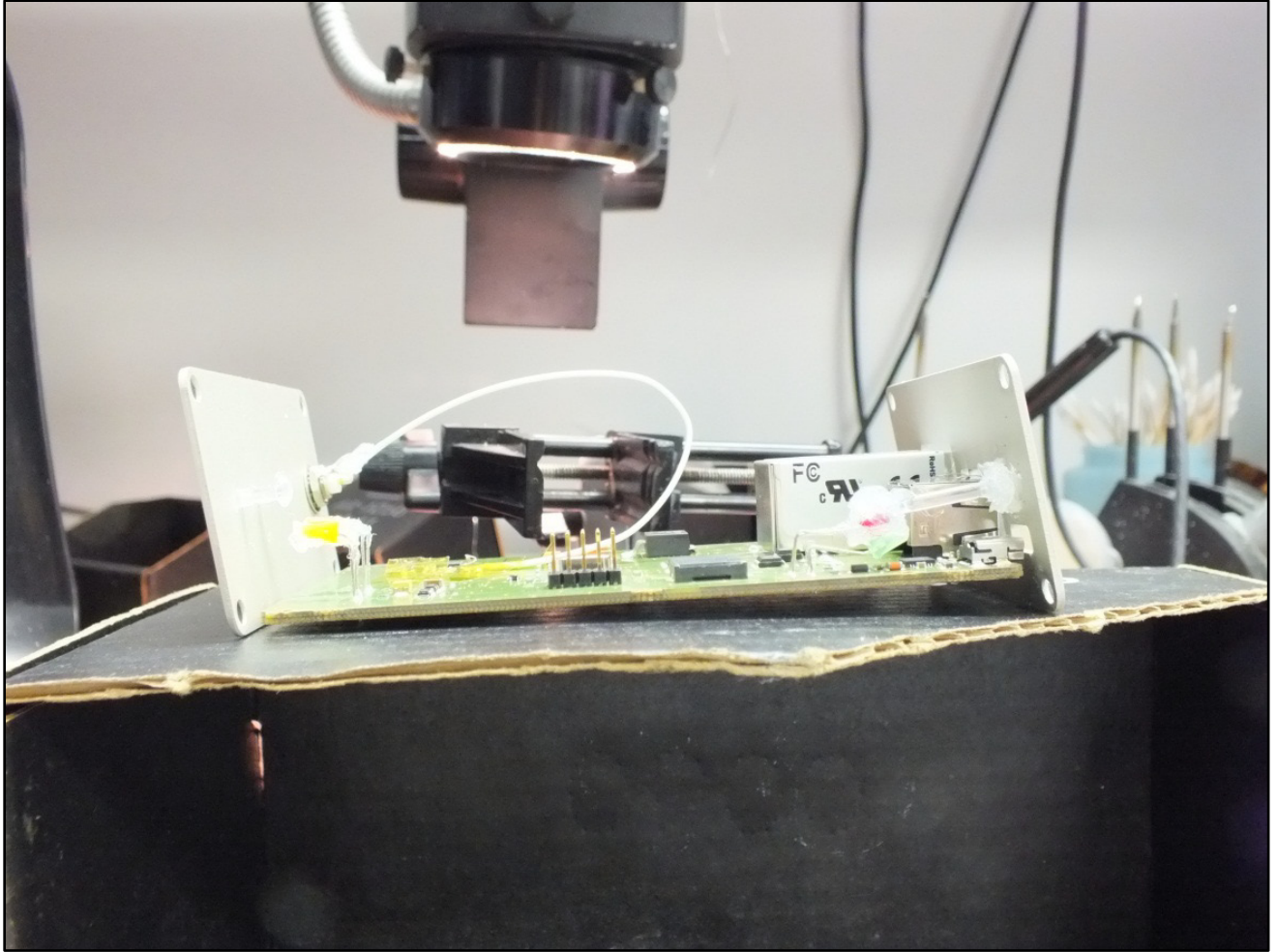


Figure 3: Receiver PCB Side View

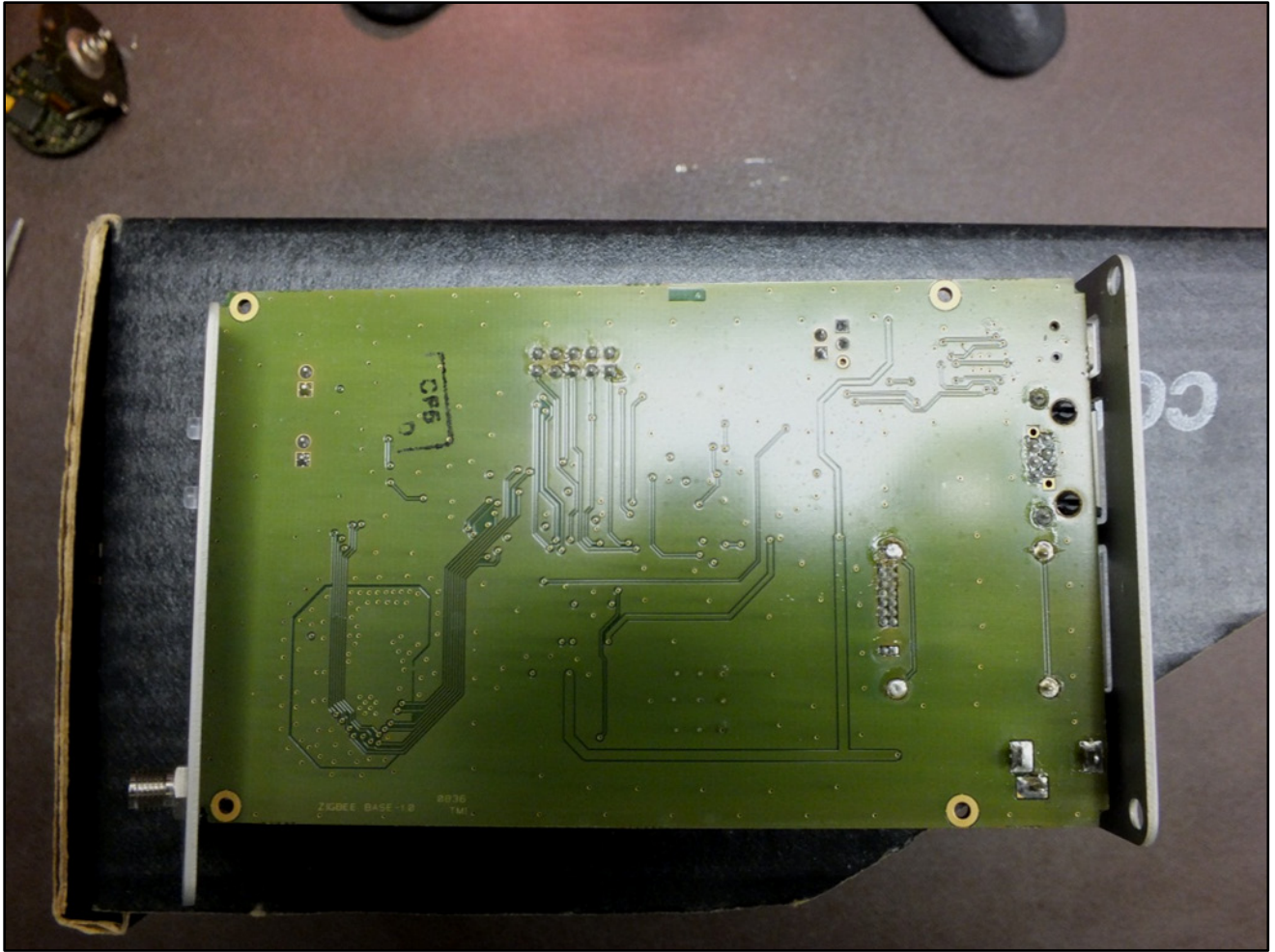


Figure 4: Receiver PCB Bottom View