

PARROT SOUND SYSTEM

User Manual

ENG

For Bluetooth
Mobile Phone



STEREO



2x35W



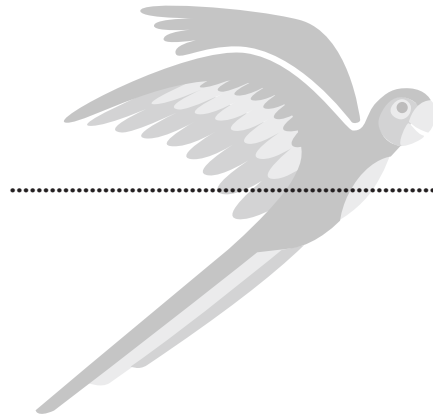
Auto
AMPLIFY



www.parrot.biz

Parrot SOUND SYSTEM

English



p 3-10

www.parrot.biz

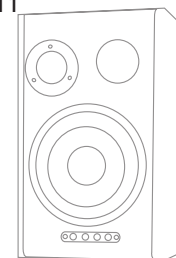
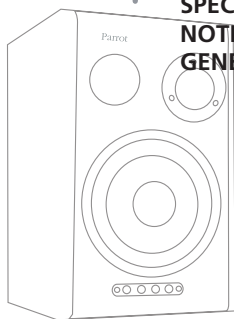
Parrot SOUND SYSTEM



English

CONTENTS

INTRODUCTION	5
KIT CONTENTS	6
USING FOR THE FIRST TIME	6
• Connecting the source device	6
• Playing music	6
PLACING THE SPEAKERS	7
• Wall-mounted	7
• Placing on the floor	7
USING WITH THE RCA SOCKET	7
MEANING OF THE LEDs	8
REMOTE CONTROL OF THE SPEAKERS	8
UPDATING	9
TROUBLESHOOTING	9
HOTLINE	9
SPECIFICATIONS	9
NOTES	10
GENERAL INFORMATION	11



INTRODUCTION

Thank you for purchasing the Parrot SOUND SYSTEM sound system.

The Parrot SOUND SYSTEM is a wireless sound system based on the Bluetooth technology.

Plug in the speakers and use your Bluetooth-compatible mobile phone, smartphone, PDA, computer, or MP3 player to stream your MP3 tracks to the speakers.

Your device acts as the transmitter and the speakers act as the receiver. Transmitting music in this way is known as streaming.

Parrot SOUND SYSTEM



- The Parrot SOUND SYSTEM also features a line-in socket that can be used for any music stored on an MP3 player, CD player, and so on. In this case, an audio lead is required to connect the device to either of the two speakers (supplied).
- Go to www.parrot.biz/www.parrotsound.com and select Support to find the list of Bluetooth devices with streaming capability.

KIT CONTENTS

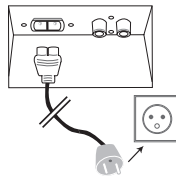
The kit includes:

- Two Parrot SOUND SYSTEM speakers
- The RCA audio lead
- Two mains leads
- Four adhesive pads.
- Two brackets.
- Four screws for fixing the wall brackets to the speakers
- Two adhesive pads to be fixed to the rear of each speaker if wall-mounting.
- Two removable black magnetic speaker covers
- The user guide.
- The quickstart guide.
- The Parrot product guide

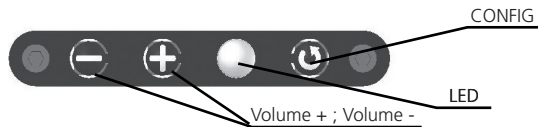
USING FOR THE FIRST TIME

Connecting your source device

- Switch the speakers on. Wait for the LEDs to turn blue..



- To connect your source device, press the . Wait for the blue LEDs to start flashing quickly. The system is ready, connect your Bluetooth device.



Volume + ; Volume -

- On your Bluetooth source device, search for peripherals (refer to your phone's user guide or check out our website at www.parrot.biz/www.parrotsound.com). Select «Parrot SOUND SYSTEM». You are prompted to enter a PIN code: Enter «0000» on your source device.

- The Parrot SOUND SYSTEM is ready to receive music.
- Subsequent connections will be established from your device, without any need to re-enter the PIN code.

- *Note: holding down the for three seconds restores the factory settings.*



Playing music

- Press «Play» on your source device and the music will automatically be sent by Bluetooth to the speakers.
- Play, forward/rewind, stop and pause can be controlled via the source device.

- The volume can be adjusted on the speakers using the buttons.



- To mute the speakers (i.e. turn the sound off), hold down for two seconds. To cancel the mute, press or .

- Only one source device can be connected at any one time to stream music to the speakers.

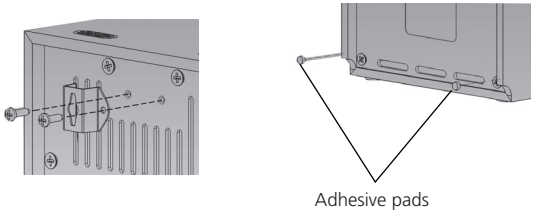
- *Note: some source devices may disconnect from the system if they are not used for a certain amount of time or if they are moved away. To use the Parrot SOUND SYSTEM again, you might need to re-establish the connection from the source device. No action needs to be performed on the Parrot SOUND SYSTEM system. Refer to the user guide for your source device or check out our website at www.parrot.biz/www.parrotsound.com for further details on the appropriate procedure.*



PLACING THE SPEAKERS

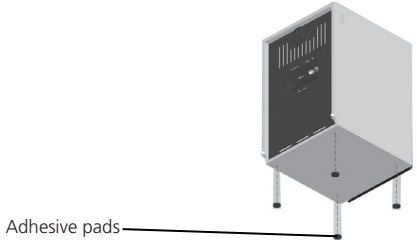
Wall-mounted:

- Use the bracket and the two screws supplied. Do not forget to stick the adhesive pads to each speaker.



Placing on the floor

- Stick the four adhesive pads beneath each speaker.



USE WITH THE RCA SOCKET

- Use the RCA socket to connect a device (Discman, MP3 player, hi-fi...)
- Connect the RCA cable to one of the speakers - the music will be sent by Bluetooth to the other speaker.



- The RCA socket is active when no Bluetooth device is connected.

• *Note: if you are using the Bluetooth feature and RCA socket at the same time: the first device to be connected and active (i.e. playing the music) will take priority. For example, while you are listening to music by Bluetooth, you will not be able to use the device on the RCA socket. You must first stop streaming from the Bluetooth device to free up the speakers and you can then use the device connected to the RCA socket. If you are using the RCA socket, you must stop using the device before you can start streaming by Bluetooth.*

MEANING OF THE LEDs

- The blue LED means that the system is being used in stereo

COLOUR	MEANING
Alternating blue/red	The two speakers are in the auto-setup phase.
Dim blue	The speakers will be undetectable for any Bluetooth device that has not already been paired. This prevents an unauthorised device from connecting and streaming music.
Bright blue	One or more sources are connected to the speakers. Waiting for music.
Blue - flashing quickly	The speakers are detectable and are ready to be detected by the source.
Blue - flashing slowly	Streaming in progress and the speakers have been muted (no sound). Press + or - to return to active mode.

- The red LED means that the system is being used in mono.

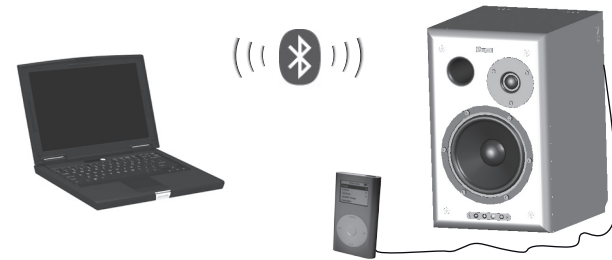
Alternating blue/red	The two speakers are in the auto-setup phase.
Dim red	The speaker will be undetectable for any Bluetooth device.
Bright red	One or more sources are connected to the speaker. Waiting for music.
Red - flashing quickly	The speaker is detectable and ready to be detected.

Red - flashing slowly

Streaming in progress and the speaker has been muted (no sound). Press **+** or **-** to return to active mode.

REMOTE CONTROL OF THE SPEAKERS

- The AVRCP Bluetooth profile (Audio Video Remote Control Profile) built into the speakers allows the volume to be controlled. You can therefore adjust the volume using devices supporting this profile. To set it up, briefly press the button **⊕** to enable the speakers to be detected by a Bluetooth device. Search for peripherals on the device and connect it using PIN code «0000».






DEGRADED MODE

- When the speakers are in degraded mode, it means that the auto-setup phase did not finish correctly. Both speakers therefore work as two independent speakers. Just one speaker is active and streams the signal in mono (the LEDs are red).
- To return to normal mode, bring the speakers close together (less than 10m) and they should automatically switch back to normal mode by restarting the auto-setup phase.
- *Note: the auto-setup phase can also be started by holding down the button **⊕** for two seconds.*

UPDATING

You can update the speakers by Bluetooth. The update protocol is secure. Download the flash utilities from our website at www.parrot.biz/www.parrotsound.com. Both speakers must be updated one after the other to complete the process. Updating increases compatibility with more source devices.

TROUBLESHOOTING

PROBLEM	SOLUTION
<ul style="list-style-type: none"> No sound is coming through the speakers. 	<ul style="list-style-type: none"> Check that the speakers are plugged in. Check that your source device supports the Bluetooth A2DP profile and the source role.
<ul style="list-style-type: none"> Sound is only coming through one speaker. 	<ul style="list-style-type: none"> Check that you are not in degraded mode (the LED is red). The distance between both speakers must be less than 10 m. Reposition the speakers and press the button  to start the auto-setup mode. If the problem persists, one of the speakers might be faulty. Contact your retailer.
<ul style="list-style-type: none"> I cannot connect my source device. 	<ul style="list-style-type: none"> Press the  button to allow connection with the system. Hold down the  button for two seconds to reset the speakers.
<ul style="list-style-type: none"> Sound only comes through one speaker when I use the RCA socket. 	<ul style="list-style-type: none"> Check that the sound level of the device connected is not too low. Check that you are not already connected to a Bluetooth source.

- I have connected my hi-fi, but there is no sound.

- Check that you have properly connected the RCA sockets on the speakers.
- Check that you are not already connected to another source, where priority is given to the Bluetooth device.

HOTLINE






Our hotline is at your disposal. You can contact us by email or telephone.

- Europe: +33 (0) 1 48 03 60 69
- UK: +44 (0) 870 112 5872
- USA: (877) 9 PARROT (toll-free)
- Germany: +49 89 590 820 75

Check out our website at www.parrot.biz/www.parrotsound.com for further details.

SPECIFICATIONS

Buttons:

- Short press of ** : enables a device to be paired.
- Long press of ** : reconfigures the system. All paired devices are deleted.
- Volume  / ** : volume adjustment from the speakers.
- Long press of ** : mutes the sound.

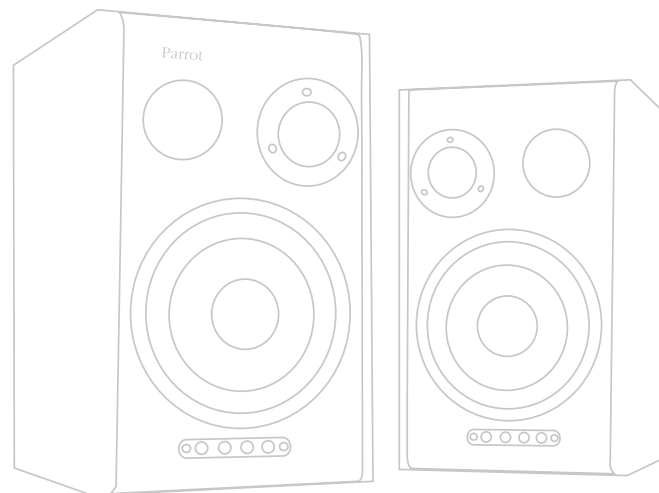
Speakers:

- Built-in stereo codec.
- Bluetooth 2.0 EDR module (compatible with Bluetooth 1.2).
- 32 Mbit flash memory, 64 Mbit SDRAM.
- Two drivers: one midbass and one tweeter.
- Built-in stereo audio amplifier: 2 x 60 W.
- Frequency range: 50 Hz – 20 kHz.
- Power supply: 110/220V (automatic voltage selector).
- Bi-amplification.
- Parrot 32-bit DSP technology.
- 32-bit digital sound processing.
- Crossover: 7 dedicated crossover filters.

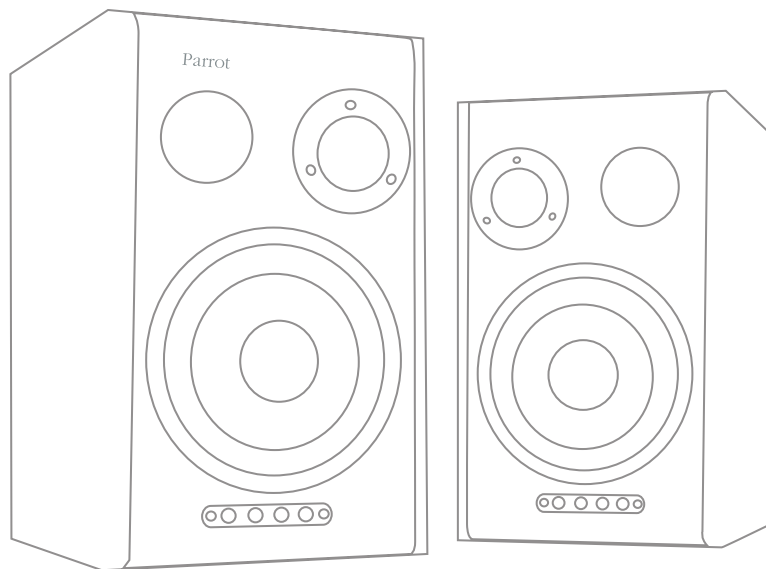
- One RCA socket for the line-in.
- Dimensions: 215 x 190 x 295 mm.
- Removable and interchangeable speaker covers.
- Can be wall-mounted.

Bluetooth:

- 2.0 – EDR qualified
- A2DP (SBC codec and MP3)
- AVRCP
- SPP
- PIN code: 0000



Parrot SOUND SYSTEM



GENERAL INFORMATION

SAFETY INFORMATION


FCC Compliance Statement

This device complies with part 15 of the FCC rules. Operation is subject to the following two conditions:

- (1). this device may not cause harmful interference, and
- (2). this device must accept any interference received, including interference that may cause undesired operation.

Note: The manufacturer is not responsible for any radio or tv interference caused by unauthorized modifications to this equipment. Such modifications could void the user's authority to operate the equipment.

Declaration of Conformity

 We, Parrot S.A. of 174 quai de Jemmapes, 75010 Paris, France, declare under our sole responsibility that our product, the Parrot SOUND SYSTEM to which this declaration relates is in conformity with appropriate standards EN300328, EN301489-1, EN60065 following the provision of Radio Equipment and Telecommunication Equipment directive, with requirements covering EMC directive 89/336/EEC and Low Voltage directive 73/23/EEC.

Bluetooth

The Bluetooth® word mark and logos are owned by the Bluetooth® SIG, Inc. and any use of such marks by Parrot S.A. is under license. Other trademarks and trade names are those of their respective owners.

Correct Disposal of This Product (Waste Electrical & Electronic Equipment)

(Applicable in the European Union and other European countries with se-

parate collection systems). This marking shown on the product or its literature, indicates that it should not be disposed with other household wastes at the end of its working life. To prevent possible harm to the environment or human health from uncontrolled waste disposal, please separate this from other types of wastes and recycle it responsibly to promote the sustainable reuse of material resources. Household users should contact either the retailer where they purchased this product, or their local government office, for details of where and how they can take this item for environmentally safe recycling. Business users should contract their supplier and the terms and conditions of the purchase contract. This product should not be mixed with other commercial wastes for disposal.

MP3 Trademark

MPEG Layer-3 audio coding technology licensed from Fraunhofer IIS and Thomson.

Protection and personal safety

- Carefully read the user guide and follow the indicated procedure when setting up the device.
- Do not dismantle or open the device and do not touch the electronic components or the drivers.
- Do not attempt to dismantle or modify either of the speakers. Never introduce any metal object to avoid the risks of electric shocks, fire, short circuits or dangerous emissions. If your device shows signs of faulty operation, call the approved Parrot technical support centre or an approved retailer.
- Never leave the SOUND SYSTEM speakers exposed to rain or chemical products; do not place them in a damp area or where they are likely to be splashed with water. Never place your device on a recipient containing any type of liquid, which might seep inside the device. Doing so will reduce the risks of electric shocks, short circuits, fire and injury.

General precautions

- Do not expose the SOUND SYSTEM system to outside temperatures below 5°C or above 45°C. The system could be damaged or the cabinet warped. Avoid placing the system near a source of heat or exposing it to sunlight (even through a window). Similarly, excessively low temperatures and humidity could damage the device.
- Always unplug the system from the mains during a thunderstorm or if you will not be using it for a certain amount of time. Otherwise, you are increasing the potential risks of electric shocks, short circuits and fire.
- Only use the power lead supplied with the device.
- Do not place any heavy objects on top of the speakers: take care when using the buttons, connections and protection covers. Otherwise, you are likely to damage the device.
- Avoid exposing the SOUND SYSTEM speakers to an excessive amount of dust, whether during operation or in storage. Dust is likely to build up inside the device and lead to poor or faulty operation.
- Do not use any benzene-based products, solvents, detergents or any other chemical products to clean the outside of the device. Such products are likely to discolour and damage the front panel and the case. Simply wipe over with a soft, dry cloth.

Data security

Parrot and its suppliers shall not be held liable for any lost data or any other damage resulting directly or indirectly from the use or malfunction of this product.

Parrot strives to provide the most up-to-date and comprehensive guides possible. It is our aim to provide you with a user-friendly, easy-to-under-

stand guide to help you set up your new equipment and quickly become familiar with the various features. If your guide does not exactly match the product purchased, refer to our website (www.parrot.biz/www.parrot-sound.com) to obtain the very latest version of the guide.

GENERAL INFORMATION

Copyrights

Copyright © 2004 Parrot. All rights reserved. The total or even partial reproduction, transmission or storage of this guide in any form or by any process whatsoever (electronic, mechanical, photocopy, recording or otherwise) is strictly prohibited without prior consent from Parrot.

Registered trademarks

All the names and trademarks mentioned in this document are copyright-protected and are the property of their respective owners.

Modifications

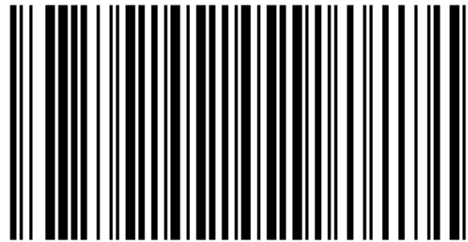
The explanations and specifications in this guide are given for information purposes only and may be modified without prior notice. They are deemed to be correct at time of going to press. The utmost care has been taken when writing this guide, as part of the aim to provide you with accurate information. However, Parrot shall not be held responsible for any consequences arising from any errors or omissions in the guide, nor for any damage or accidental loss of data resulting directly or indirectly from the use of the information herein. Parrot reserves the right to amend or improve the product design or user guide without any restrictions and without any obligation to notify users.

As part of our ongoing concern to upgrade and improve our products, the product that you have purchased may differ slightly from the model described in this guide. If so, a later version of this guide might be available in electronic format at Parrot's website at www.parrot.biz/www.parrotsound.com.





Parrot S.A. - 174, quai de Jemmapes - 75010 Paris - France
Fax +33 1 48 03 06 66 / Phone +33 1 48 03 60 60
<http://www.parrot.biz>



PI030308AA

