

15, rue de la Claie
Z.I. Angers-Beaucouzé
49070 BEAUCOUZÉ
Tél. 02 41 73 26 27
Fax 02 41 73 26 40
e-mail : atlantique@emitech.fr
R.C.S. ANGERS 95 B 543
SIRET 344 545 645 00055

RA-06-24223-2/A Ed. 0

FCC CERTIFICATION RADIO Measurement Technical Report

standard to apply:
FCC Part 15.247

Equipment under test:
BLUETOOTH DRIVER HEADSET
OROS

FCC ID :
RKXOROS

Company:
PARROT

DISTRIBUTION: Mr GUERRAB

Company: PARROT

Number of pages: 27 including 4 annexes

Ed.	Date	Modified pages	Editing		Verification Approval	
			Name	Visa	Name	Visa
0	17-May-06	Creation	L. BERTHAUD	LB		

Duplication of this test report is only permitted for an integral photographic facsimile. It includes the number of pages referenced here above.

This document is the result of testing a specimen or a sample of the product submitted. It does not imply an assessment of the conformity of the whole manufactured products of the tested sample.

PRODUCT: **BLUETOOTH DRIVER HEADSET**

Reference / model: OROS

Serial number: not communicated

MANUFACTURER: not communicated

COMPANY SUBMITTING THE PRODUCT:

Company: PARROT

Address: 174, quai de Jemmapes
75010 PARIS CEDEX
FRANCE

Responsible: Mr GUERRAB

DATES OF TEST: 02, 03 and 04 May 2006

TESTING LOCATION: EMITECH ATLANTIQUE laboratory at ANGERS (49) FRANCE
EMITECH ATLANTIQUE open area test site in LA POUEZE (49)
FRANCE

Registration Number by FCC: 101696/FRN: 0006 6490 08

TESTED BY: L. BERTHAUD

CONTENTS

TITLE	PAGE
1. INTRODUCTION.....	4
2. PRODUCT DESCRIPTION	4
3. NORMATIVE REFERENCE.....	4
4. TEST METHODOLOGY	5
5. ADD ATTACHMENTS FILES	5
6. TESTS AND CONCLUSIONS	6
7. PEAK OUTPUT POWER.....	7
8. PEAK POWER DENSITY.....	9
9. RADIATED EMISSION OF TRANSMITTER.....	11
ANNEX 1: CHANNEL SEPARATION.....	13
ANNEX 2: AVERAGE TIME OF OCCUPANCY ON ANY FREQUENCY.....	16
ANNEX 3: PHOTOS OF THE EQUIPMENT UNDER TEST	22
ANNEX 4: TEST SET UP.....	26

1.INTRODUCTION

This document presents the result of RADIO test carried out on the following equipment: BLUETOOTH DRIVER HEADSET OROS in accordance with normative reference.

2.PRODUCT DESCRIPTION

ITU Emission code: 1M00F7D

Class: B (residential environment)

Utilization: Bluetooth headset

Antenna type: incorporated antenna

Operating frequency range: I.S.M. band from 2400 MHz to 2483.5 MHz

Number of channels: 79

Channel spacing: 1 MHz

Frequency generation: SAW Resonator Crystal Synthetiser

Modulation: Frequency Hopping Spread Spectrum (FHSS)
 Amplitude Digital Frequency Phase

Power source: 12 Vd.c.

Power level, frequency range and channels characteristics are not user adjustable.

The details pictures of the product and the circuit boards are joined with this file.

3.NORMATIVE REFERENCE

The standards and testing methods related throughout this report are those listed below. They are applied on the whole test report even though the extensions (version, date and amendment) are not repeated.

FCC Part 15 (2006) Code of Federal Regulations
Title 47 - Telecommunication
Chapter 1 - Federal Communications Commission
Part 15 - Radio frequency devices
Subpart C - Intentional Radiators

ANSI C63.4 (2003) Methods of Measurement of Radio-Noise Emissions from Low-voltage Electrical and Electronics Equipment in the range of 9 kHz to 40 GHz.

4.TEST METHODOLOGY

Radio performance tests procedures given in part 15:

- Paragraph 33: frequency range of radiated measurements
- Paragraph 35: measurement detector functions and bandwidths
- Paragraph 205: restricted bands of operation
- Paragraph 209: radiated emission limits; general requirements
- Paragraph 247: operation within the bands 2400-2483.5 MHz

5.ADD ATTACHMENTS FILES

- “Synoptic “***
- “Block diagram “***
- “External photos and Product labeling “***
- “Assembly of components “***
- “Internal photos “***
- “Layout pcb “***
- “Bil of materials “***
- “Schematics “***
- “Product description “***
- “User guide “***

6. TESTS AND CONCLUSIONS

Test procedure	Description of test	Criteria respected ?				Comment
		Yes	No	NAp	NAs	
FCC Part 15.205	RESTRICTED BANDS OF OPERATION	X				
FCC Part 15.207	CONDUCTED LIMITS			X		Note 4
FCC Part 15.209	RADIATED EMISSION LIMITS; general requirements	X				Note 5
FCC Part 15.247	OPERATION WITHIN THE BAND 2400-2483.5 MHz					
	(a) (1) hopping systems	X				Note 1 and 2
	(a) (2) digital modulation techniques			X		
	(b) max output power	X				Note 6
	(c) operation with directional antenna gains > 6 dBi			X		Note 3
	(d) intentional radiator	X				
	(e) peak power spectral density	X				Notes 6 and 9
	(f) hybrid system			X		
	(g)	X				Note 7
	(h)	X				
	(i) RF exposure compliance	X				Note 8

NAp: Not Applicable

NAs: Not Asked

Note 1: the frequency hopping system have hopping channel carrier frequencies separated by 1 MHz. The system hop to channel frequencies from a pseudo randomly ordered list of hopping frequencies. Each frequency is used equally on the average by the transmitter, and separated by a minimum of 20 dB bandwidth of the hopping channel (see annex 1).

Note 2: the frequency hopping system use more than 15 channels.
 The timing by channel is 458 μs.
 During 79 channels × 0.4 s (part 15) = 31.6 s, any channel is used 106 times, then
 106 × 458 μs = 48.55 ms, thus the average time of occupancy on any channel is less than 400 ms within a period of 0.4 s multiplied by the number of hopping channels employed, in normal operating mode (see annex 2).

Note 3: the antenna gain is less than 6 dBi.

Note 4: battery source power.

Note 5: see FCC part 15.247 (d).

Note 6: conducted measurement is not possible (integral antenna), so we used the radiated method in open field.

Note 7: speech application.

Note 8: this type of equipment uses less than 0.5 W of output power with a high signal transmitting duty factor (section 3 from Oet and 65c).

Note 9: for information only.

Conclusion:

The sample of BLUETOOTH DRIVER HEADSET OROS submitted to the tests complies with the regulations of the standard FCC Part 15 in accordance with the limits or criteria defined in this report.

7. PEAK OUTPUT POWER**Standard:** FCC Part 15**Test procedure:** paragraph 15.247**Test equipment:**

TYPE	BRAND	EMITECH NUMBER
Spectrum analyzer FSP 40	Rohde & Schwarz	4088
Diode detector OD20004A	Omniyig	2469
Oscilloscope THS 720	Tektronix	0940
Antenna RGA60	Electrometrics	1938
Antenna RGA60	Electrometrics	1204
Open site	EMITECH	1274
Radio frequency generator SME06	Rohde & Schwarz	1669
High pass filter HPM11630	Micro-tronics	1673
Low-noise amplifier 1 to 18 GHz	ALC	2648
Power meter 8541B	Gigatronics	3479
Power sensor 80401A	Gigatronics	3182
Power source E3610A	Hewlett Packard	4195

Test set up:

The system is tested in an open area test site (OATS).

The test unit is placed on a rotating table, 0.8 m from a ground plane. Zero degree azimuth corresponds to the front of the equipment under test.

We use for this measure outdoor test site, by substitution method. The measuring distance between the equipment and the test antenna is 3 m. The antenna have been oriented in the two polarizations, we have recorded only highest level.

In first the spectrum analyzer is replaced by a diode detector which is connected to the vertical channel of an oscilloscope.

The equipment under test is substituted by a signal generator with a calibrated double ridged guide antenna, and its level adjusted such that the deviation of the Y-trace of the oscilloscope reaches the level obtained with the E.U.T.

The output power level of the signal generator is measured with a calibrated RF power meter.

Then a measurement of the electro-magnetic field is realized, with a resolution bandwidth and video bandwidth adjusted at 1 MHz.

Distance of antenna: 3 meters**Antenna height:** 1 to 4 meters**Antenna polarization:** vertical and horizontal**Equipment under test operating condition:**

The equipment is blocked in continuous transmission mode, modulated by internal data signal.

Results:

Ambient temperature (°C): 20.5

Relative humidity (%): 53

Polarization of test antenna: horizontal (height: 100 cm)

Position of equipment: use position (azimuth: 200 degrees)

Sample n° 1

		Peak Output Power radiated at these frequencies (W): from 2402 MHz to 2480 MHz	Limits (W)
Normal test conditions	Nominal power source (V): 12	0.526×10^{-3}	1*

* the frequency hopping systems use at least 75 hopping channel.

Sample n° 1 Channel 1

		Level dB μ V	Cable loss dB	Antenna factor dB	Electro-magnetic field (dB μ V/m):	P* (W)
Normal test conditions	Nominal power source (V): 12	56.51	4.41	27.77	88.69	0.135×10^{-3}

Sample n° 1 Channel 40

		Level dB μ V	Cable loss dB	Antenna factor dB	Electro-magnetic field (dB μ V/m):	P* (W)
Normal test conditions	Nominal power source (V): 12	56.82	4.41	27.77	89	0.145×10^{-3}

Sample n° 1 Channel 79

		Level dB μ V	Cable loss dB	Antenna factor dB	Electro-magnetic field (dB μ V/m):	P* (W)
Normal test conditions	Nominal power source (V): 12	56.64	4.41	27.77	88.82	0.139×10^{-3}

* $P = (E \times d)^2 / (30 \times G)$ with $d = 3$ m and $G = 1.64$ **Test conclusion:**

RESPECTED STANDARD

8. PEAK POWER DENSITY

Standard: FCC Part 15

Test procedure: paragraph 15.247

Test equipment used:

TYPE	MANUFACTURER	EMITECH NUMBER
Spectrum analyzer FSP 40	Rohde & Schwarz	4088
Open site	Emitech	1274
Radiofrequency generator SME06	Rohde & Schwarz	1669
Antenna RGA-60	Electrometrics	1938
Antenna RGA-60	Electrometrics	1204
Power meter 8541B	Gigatronics	3479
Power sensor 80401A	Gigatronics	3182
Power source E3610A	Hewlett Packard	4195

Measured condition:

We used the same method of the peak output power, but the oscilloscope and the diode is replaced by a spectrum analyzer used in combination with an RF power meter.

Resolution bandwidth: 3 kHz

Video bandwidth: 10 kHz

Test operating condition of the equipment:

The equipment is blocked in continuous transmission mode, modulated by internal data signal.

Results:

Ambient temperature (°C): 20.5

Relative humidity (%): 53

Power source: 12 V.d.c.

Sample n° 1 Channel 1

	Peak power density at frequency: 2402 MHz
Normal test conditions	-21.08 dBm
Limits	+8 dBm

Sample n° 1 Channel 40

	Peak power density at frequency: 2441 MHz
Normal test conditions	-20.64 dBm
Limits	+8 dBm

Sample n° 1 Channel 79

	Peak power density at frequency: 2480 MHz
Normal test conditions	-20.9 dBm
Limits	+8 dBm

Test conclusion:

RESPECTED STANDARD

9.RADIATED EMISSION OF TRANSMITTER**Standard:** FCC Part 15**Test procedure:** paragraph 15.205
paragraph 15.209
paragraph 15.247**Test equipment:**

TYPE	BRAND	EMITECH NUMBER
Test receiver ESH3	Rohde & Schwarz	1058
Test receiver ESVS 10	Rohde & Schwarz	1219
Spectrum analyzer FSP 40	Rohde & Schwarz	4088
Loop antenna	EMCO	1406
Biconical antenna HP 11966C	Hewlett Packard	728
Log periodic antenna HL 223	Rohde & Schwarz	1999
Open site	Emitech	1274
Antenna RGA-60	Electrometrics	1204
Low-noise amplifier 2 to 18 GHz	Microwave DB	1922
High pass filter HP12/3200-5AA	Filtek	
Antenna WR42	IMC	1939
Power source E3610A	Hewlett Packard	4195

Test set up:

The system is tested in an open area test site (OATS).

The test unit is placed on a rotating table, 0.8 m from a ground plane. Zero degree azimuth corresponds to the front of the equipment under test.

Frequency range: from 9 kHz to harmonic 10 ($F_{\text{carrier}} \leq 10 \text{ GHz}$)**Detection mode:** Quasi-peak ($F < 1 \text{ GHz}$)
Average ($F > 1 \text{ GHz}$)**Bandwidth:** 120 kHz ($F < 1 \text{ GHz}$) or 100 kHz, following 15.205 or 15.247
1 MHz ($F > 1 \text{ GHz}$) or 100 kHz, following 15.205 or 15.247**Distance of antenna:** between 30 m and 3 m according the frequencies and the limits.**Antenna height:** 1 to 4 meters**Antenna polarization:** vertical and horizontal**Equipment under test operating condition:**

The equipment is blocked in continuous transmission mode, modulated by internal data signal.

Results:

Ambient temperature (°C): 21
Relative humidity (%): 51

Power source: 12 Vd.c.

The polarity column refers to the antenna polarity at which the maximum emissions level is measured.

Not any spurious has been detected.

Applicable limits: In any 100 kHz bandwidth outside the frequency band in which the spread spectrum or digitally modulated intentional radiator is operating, the radio frequency power that is produced by the intentional radiator shall be at least 20 dB below that in the 100 kHz bandwidth within the band that contains the highest level of the desired power.

The highest level recorded in a 100 kHz bandwidth is 88.9 dB μ V/m on channel 40.

So the applicable limit is **68.9 dB μ V/m**.

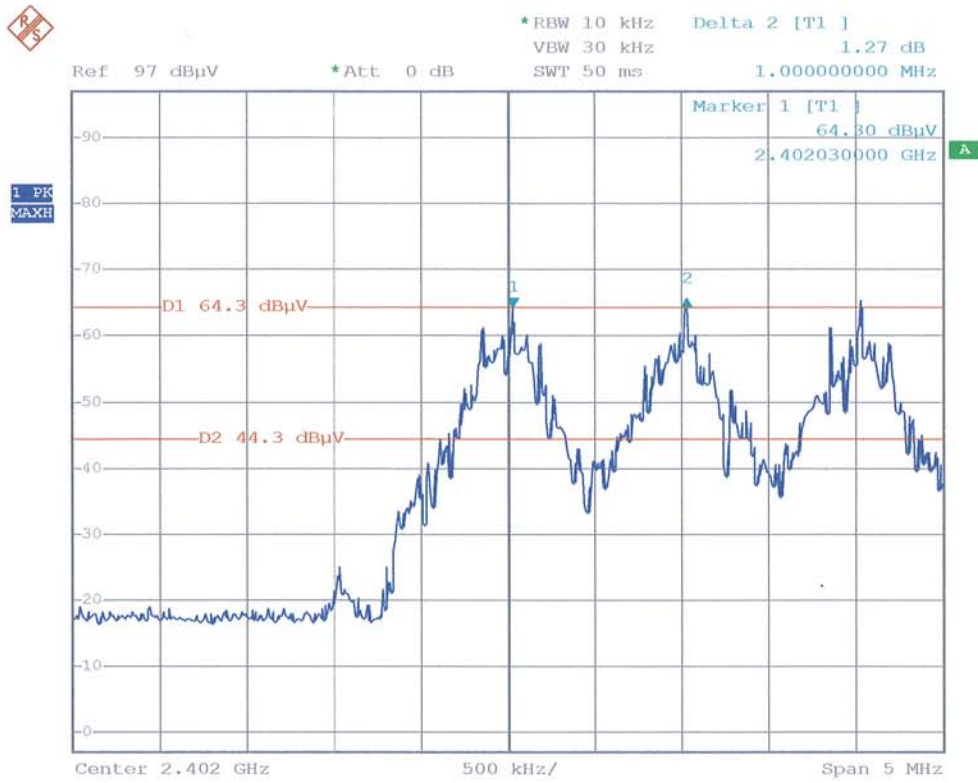
In addition, radiated emissions which fall in the restricted band, as defined in section 15.205 (a), must also comply with the radiated emission limits specified in section 15.209 (a) (see section 15.205 (c)).

TEST CONCLUSION:

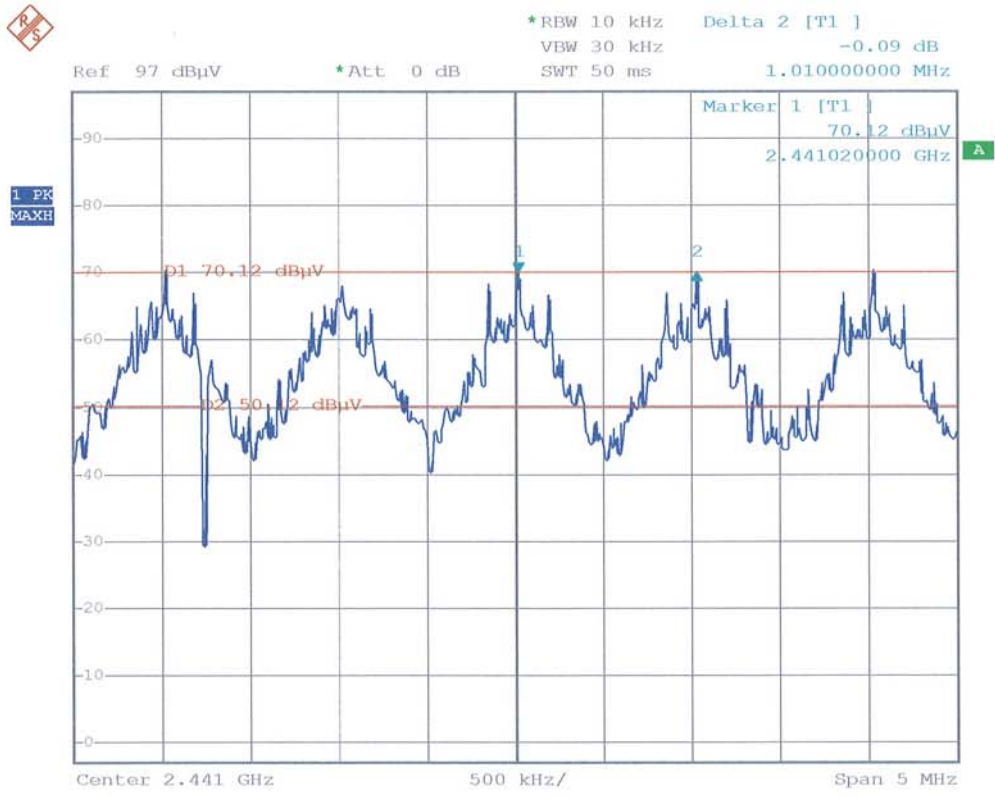
RESPECTED STANDARD

□□□ End of report, 4 annexes to be forwarded □□□

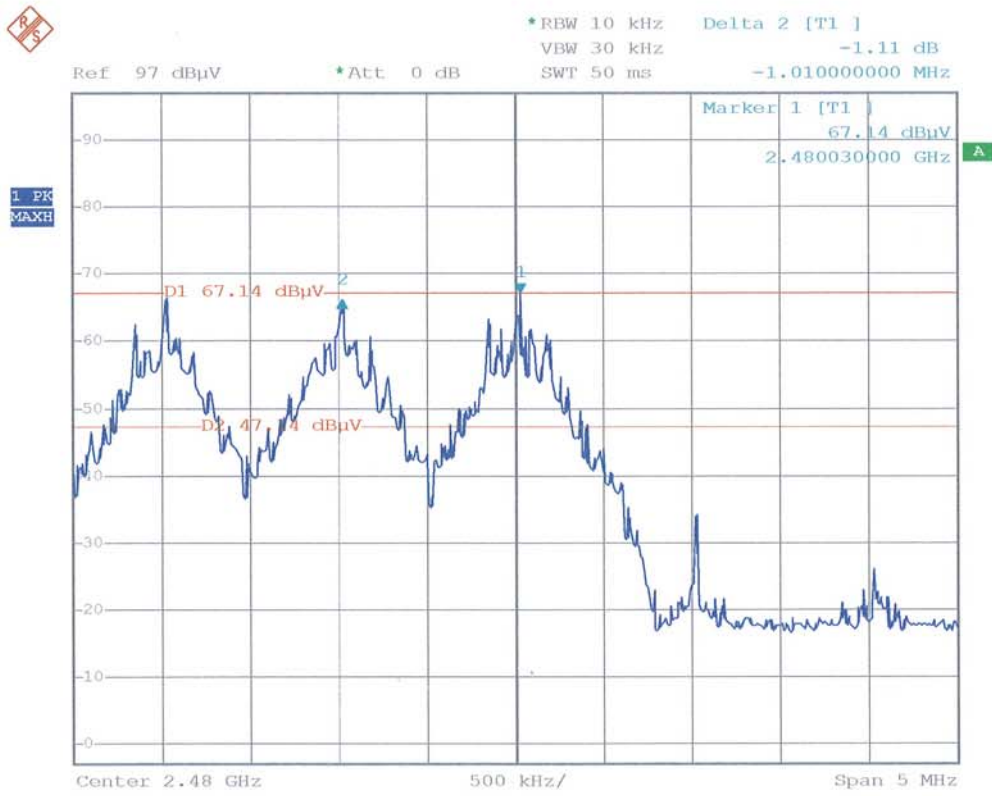
ANNEX 1: CHANNEL SEPARATION



Date: 4.MAY.2006 14:24:02

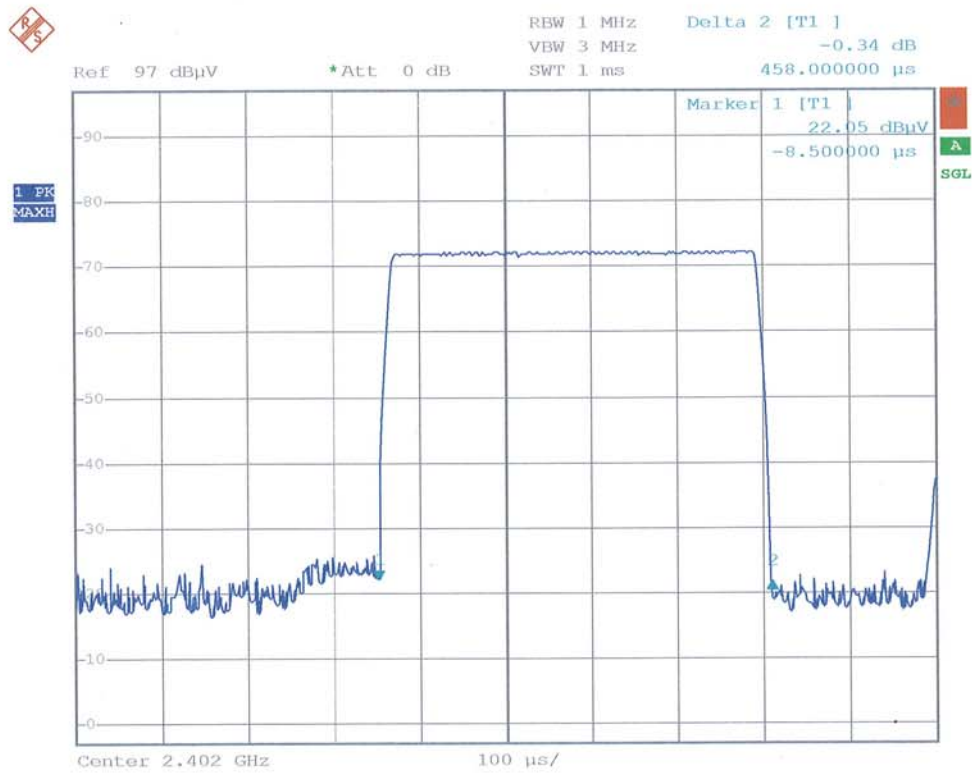


Date: 4.MAY.2006 14:33:06

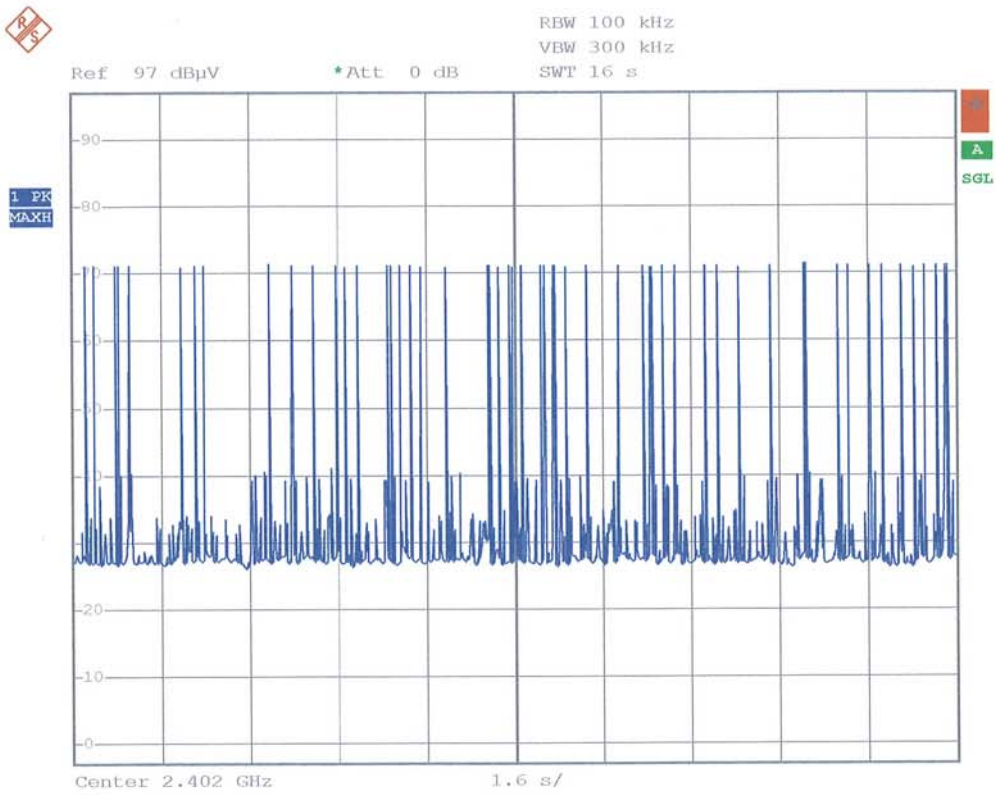


Date: 4.MAY.2006 14:40:33

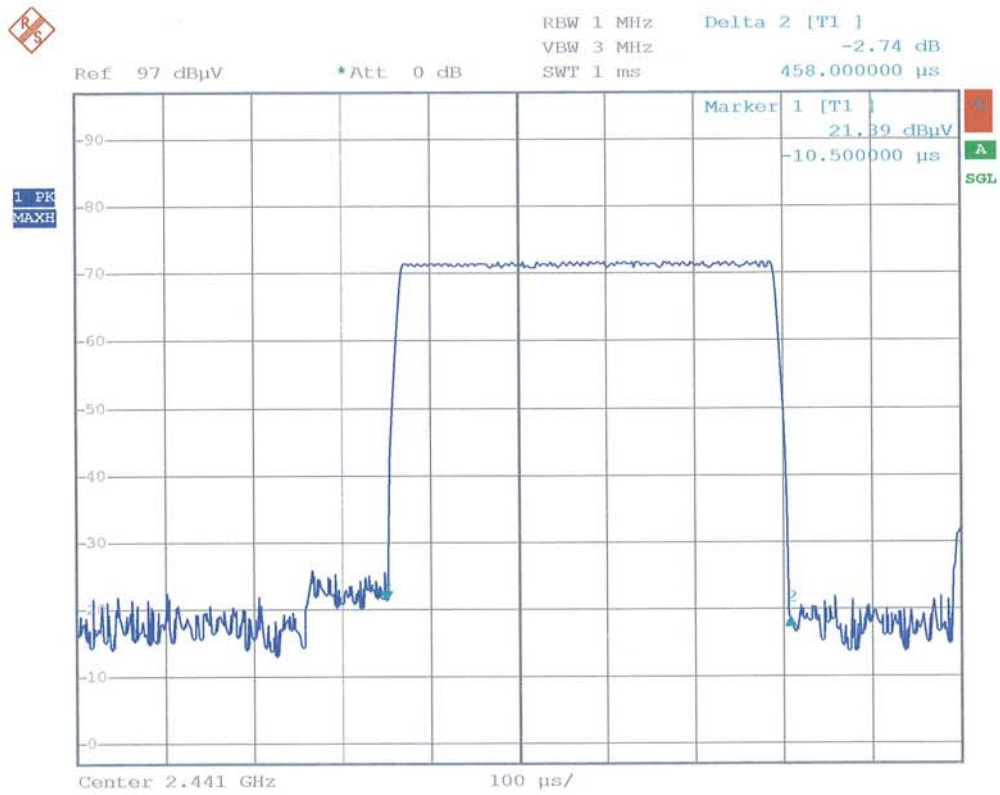
ANNEX 2: AVERAGE TIME OF OCCUPANCY ON ANY FREQUENCY



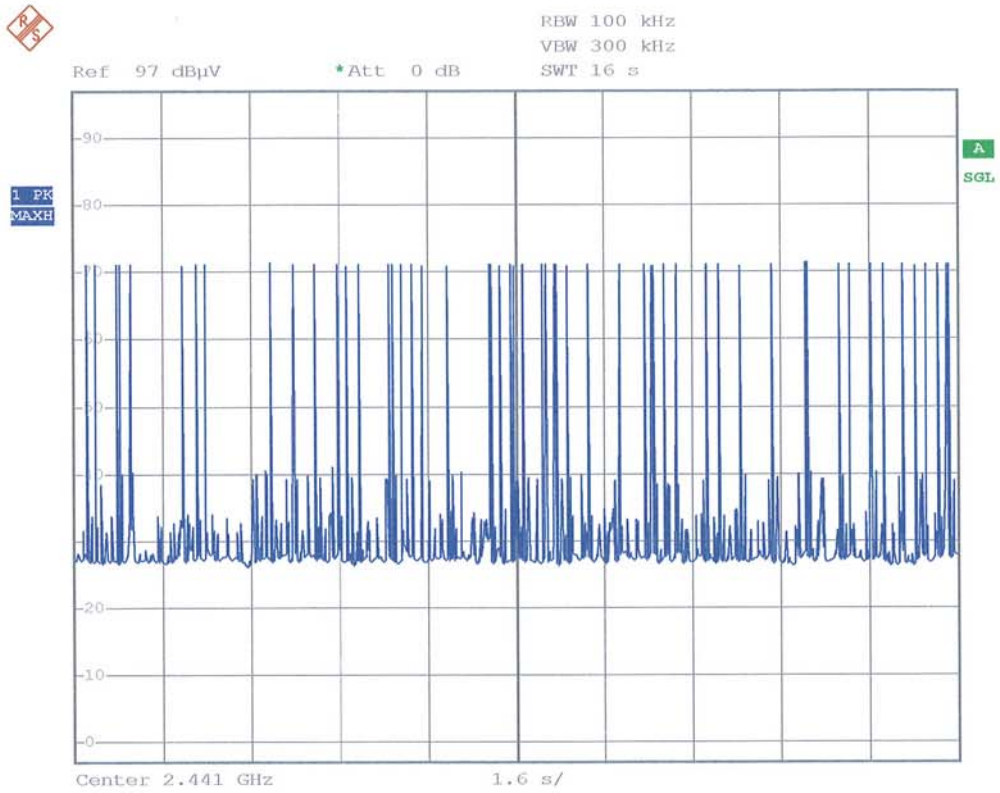
Date: 4.MAY.2006 15:34:58



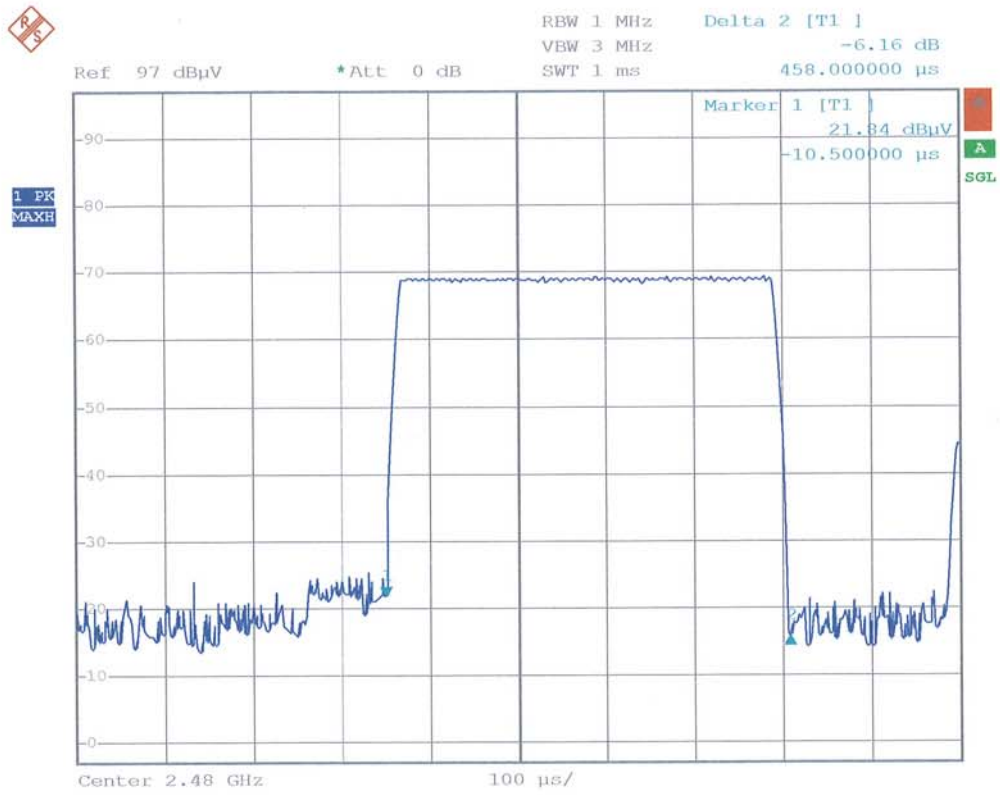
Date: 4.MAY.2006 15:44:56



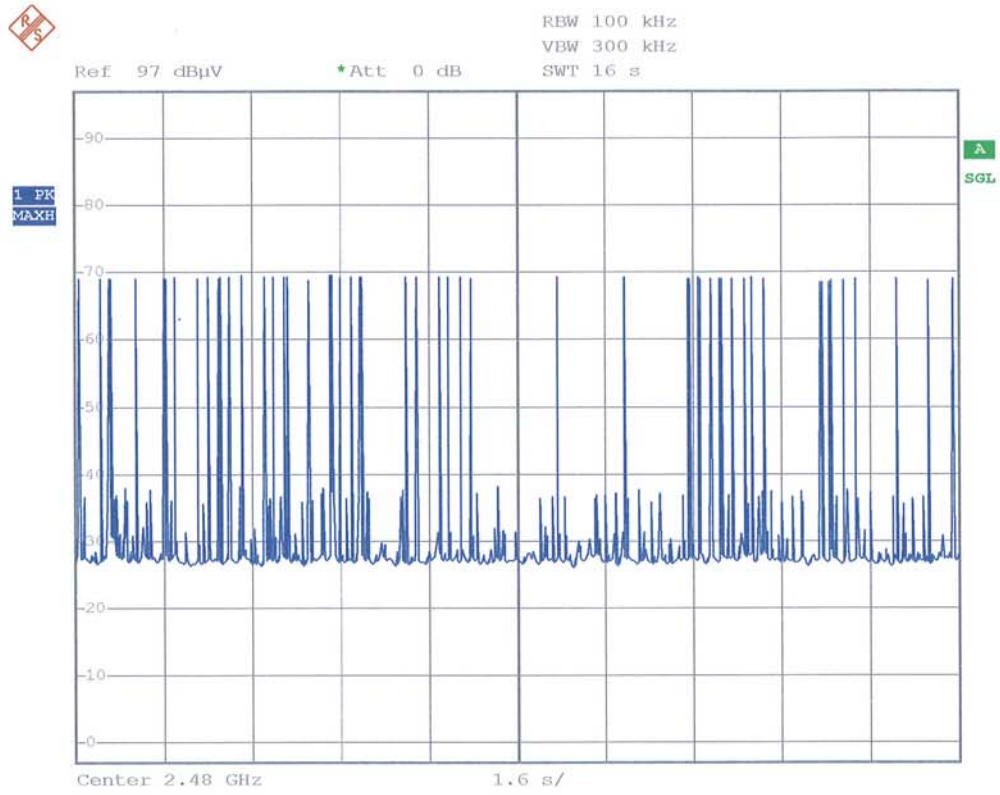
Date: 4.MAY.2006 15:33:13



Date: 4.MAY.2006 15:42:38



Date: 4.MAY.2006 15:36:56



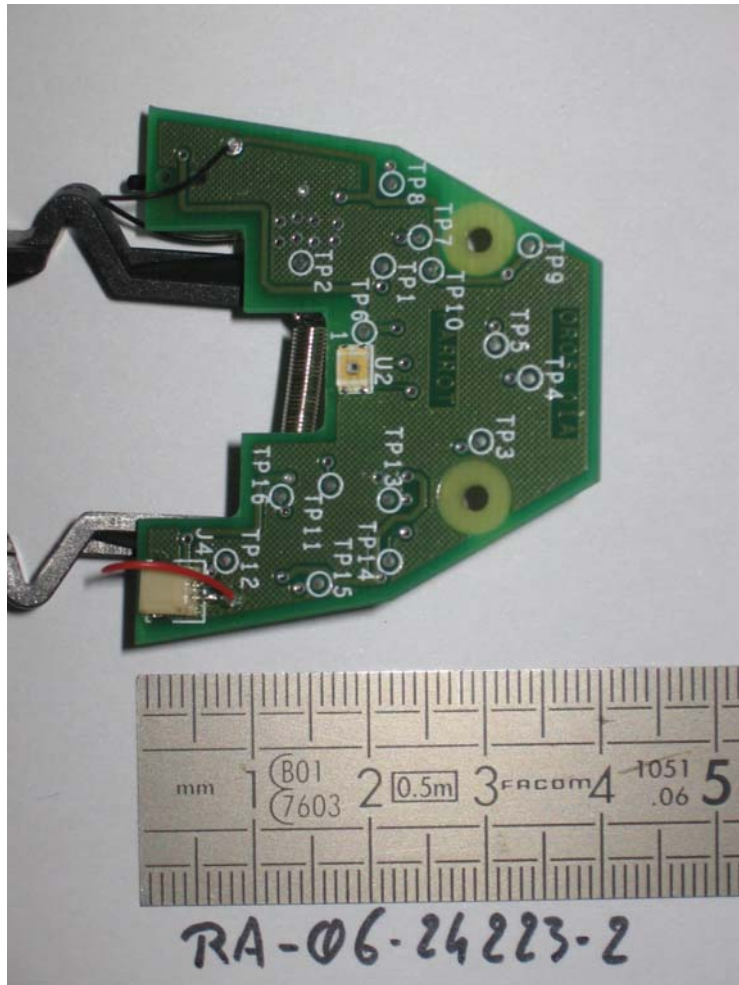
Date: 4.MAY.2006 15:39:24

ANNEX 3: PHOTOS OF THE EQUIPMENT UNDER TEST

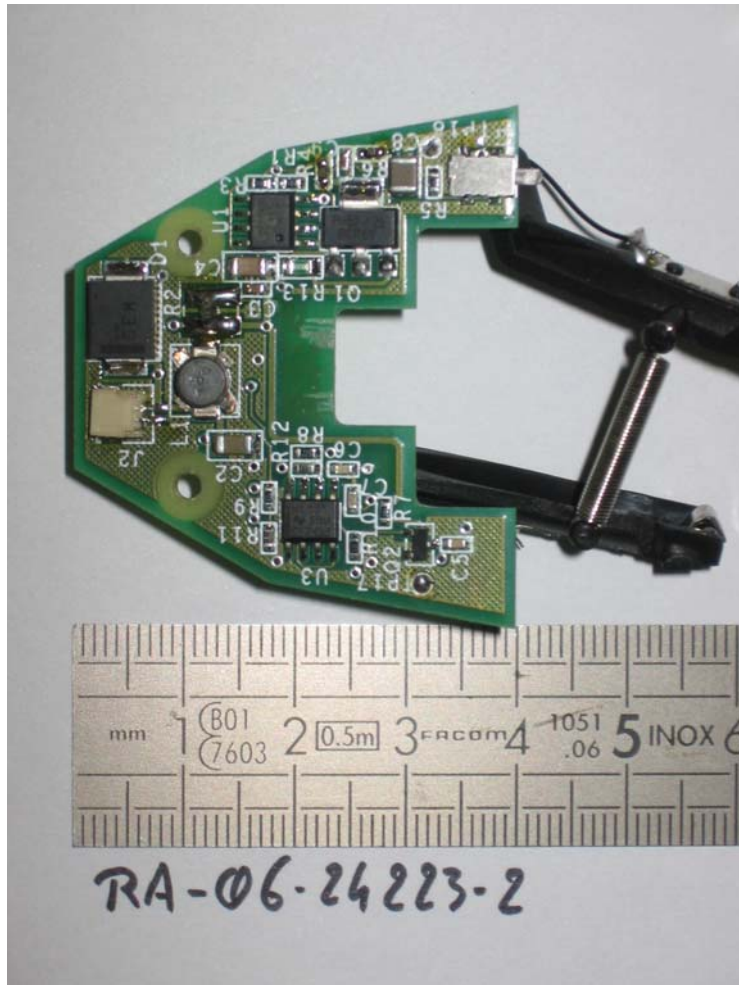
GENERAL VIEW



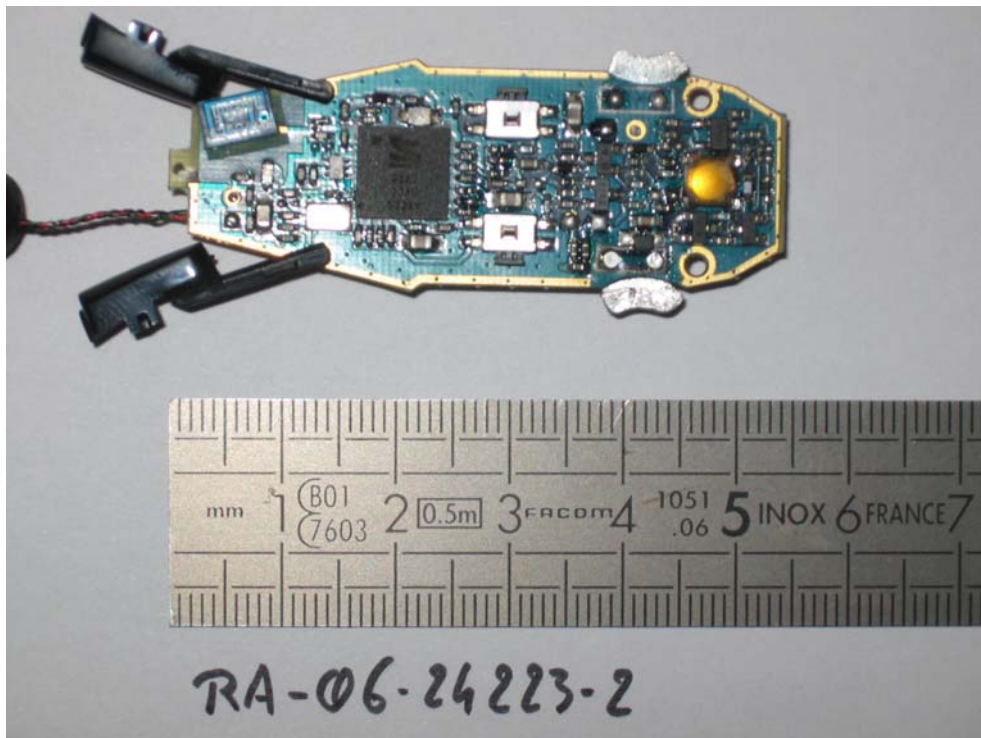
Printed circuit board BASE: face 1



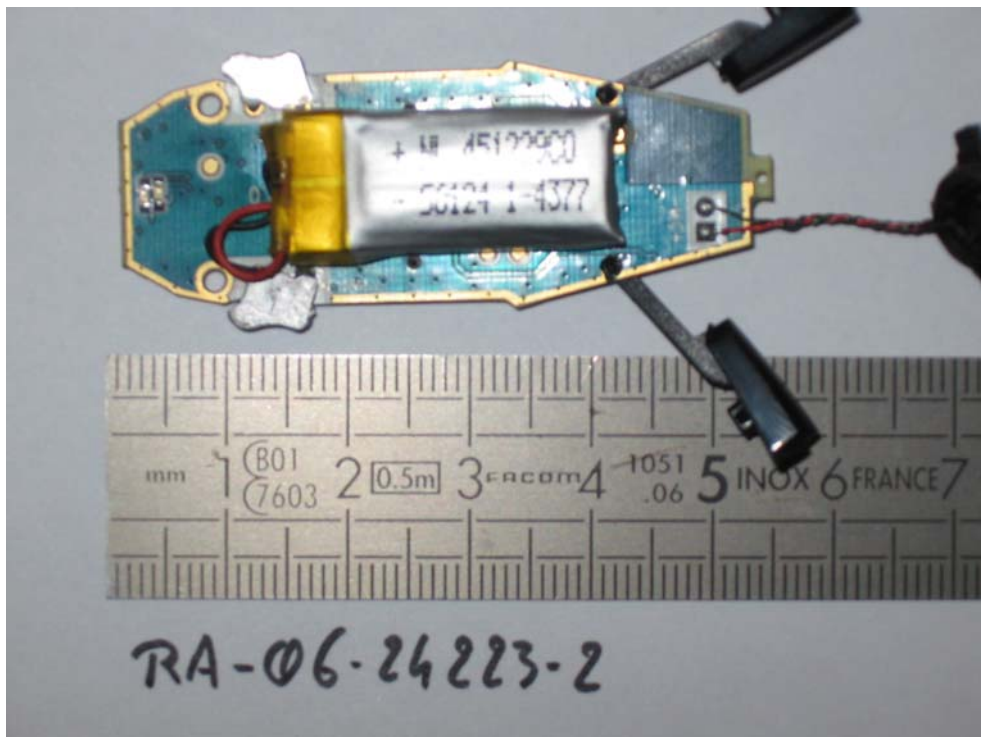
Printed circuit board BASE: face 2



Printed circuit board headset: face 1



Printed circuit board headset: face 2



ANNEX 4: TEST SET UP

OPEN AREA TEST SITE



TEST SET UP

