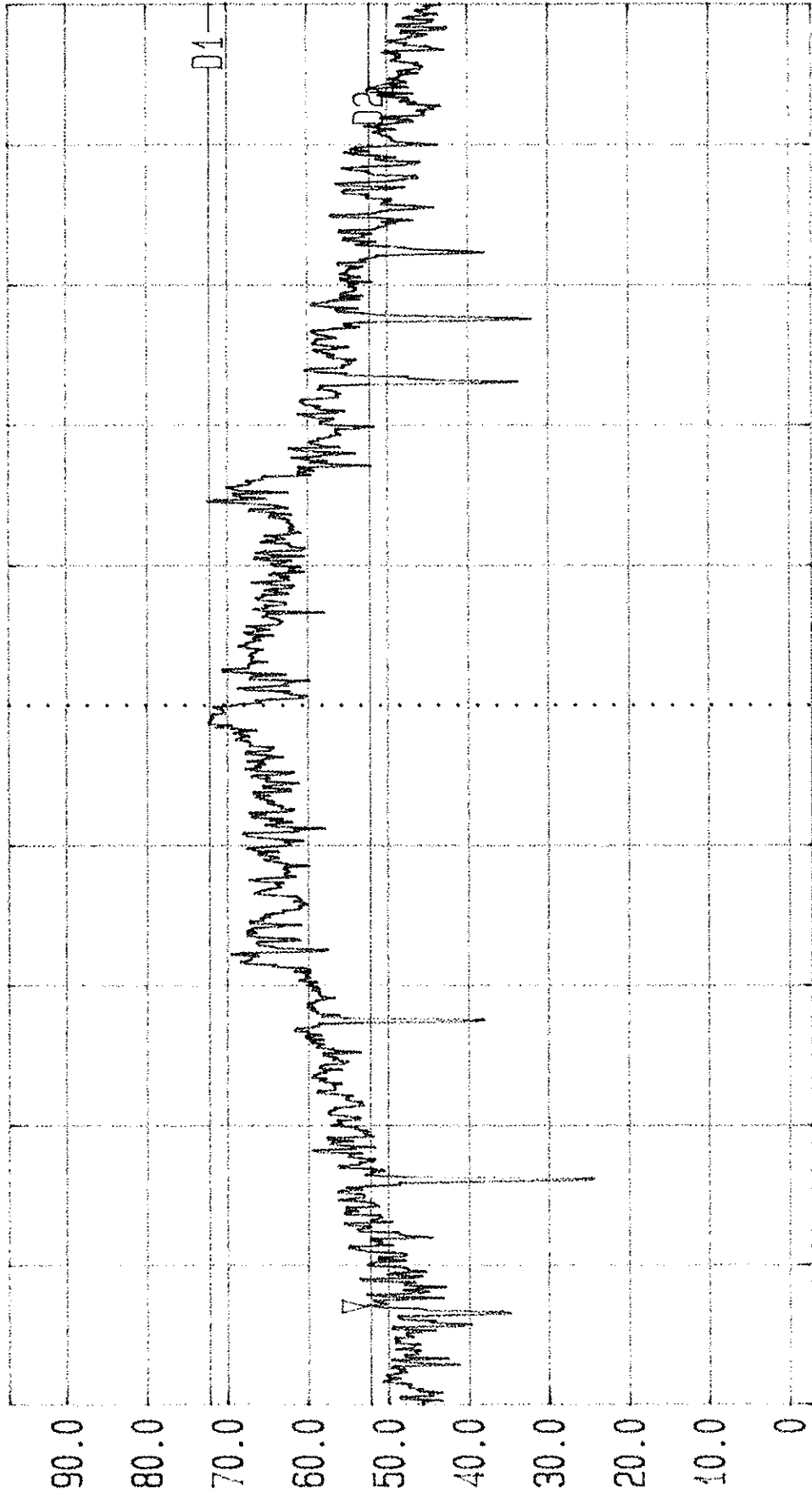




Date 02.Nov.'06 Time 10:54:17
Ref.Lvl Delta -0.31 dB
97.00 dBuV 868.8 kHz

Res.Bw 10.0 kHz [3dB]
TG.Lvl Off
CF.Stp 100.000 kHz
Vid.Bw 10 kHz
RF.Att 0 dB
Unit [dBuV]

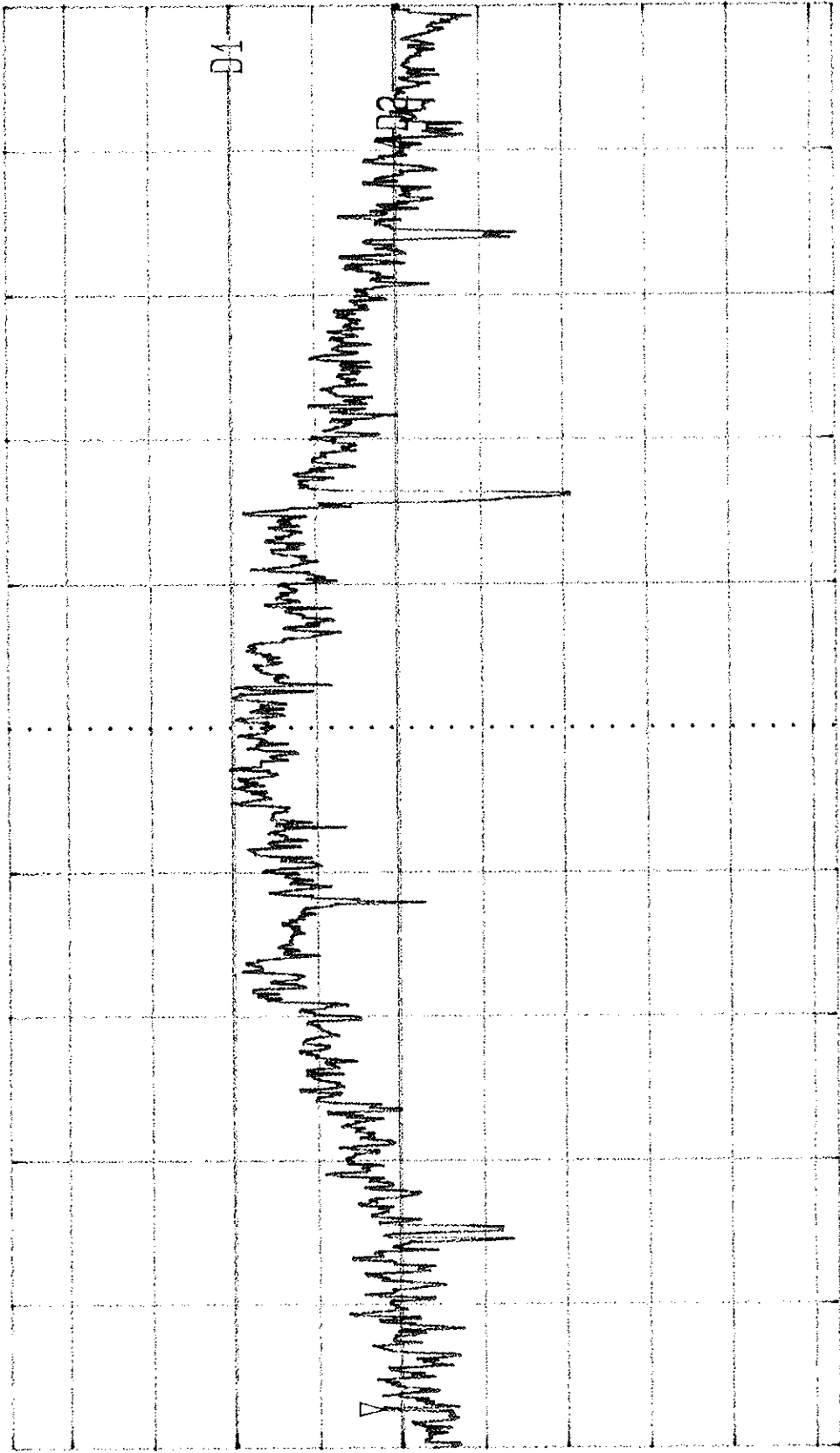


Start 2.4015 GHz Span 1 MHz Center 2.402 GHz Sweep 40 ms Stop 2.4025 GHz



Date 02.Nov.'06 Time 11:02:44
Ref.Lvl Delta 0.15 dB
97.00 dBuV 878.8 kHz

Res.Bw 10.0 kHz [3dB]
TG.Lvl Off
CF.Stp 100.000 kHz
Vid.Bw 10 kHz
RF.Att 0 dB
Unit [dBuV]

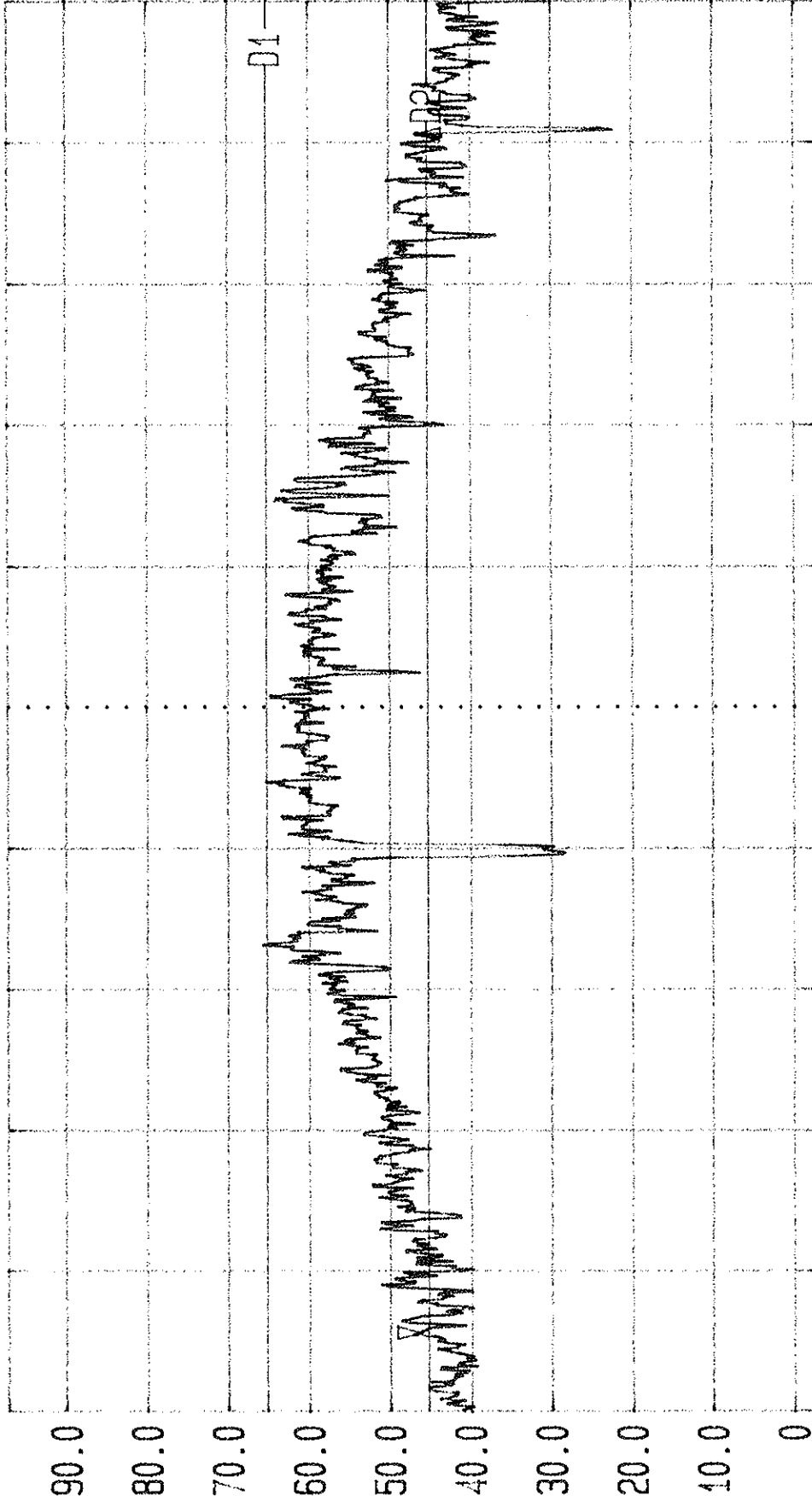


Start 2.4405 GHz
Center 2.441 GHz
Stop 2.4415 GHz
Span 1 MHz
Sweep 40 ms



Date 02.Nov.'06 Time 11:09:43
Ref.Lvl 97.00 dBuV Delta 0.46 dB
850.0 kHz

Res.BW 10.0 kHz [3dB] Vid.Bw 10 kHz
TG.Lvl off
CF.Stp 100.000 kHz AF.Att 0 dB
Unit [dBuV]



Start 2.4795 GHz Span 1 MHz Center 2.48 GHz Stop 2.4805 GHz
Sweep 40 ms