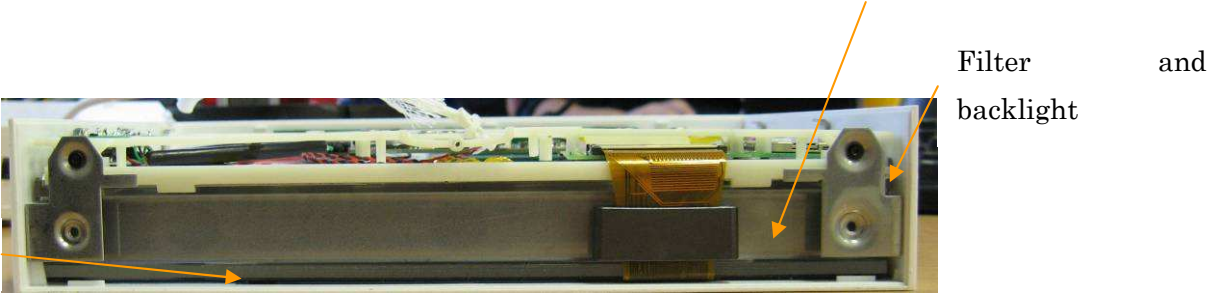
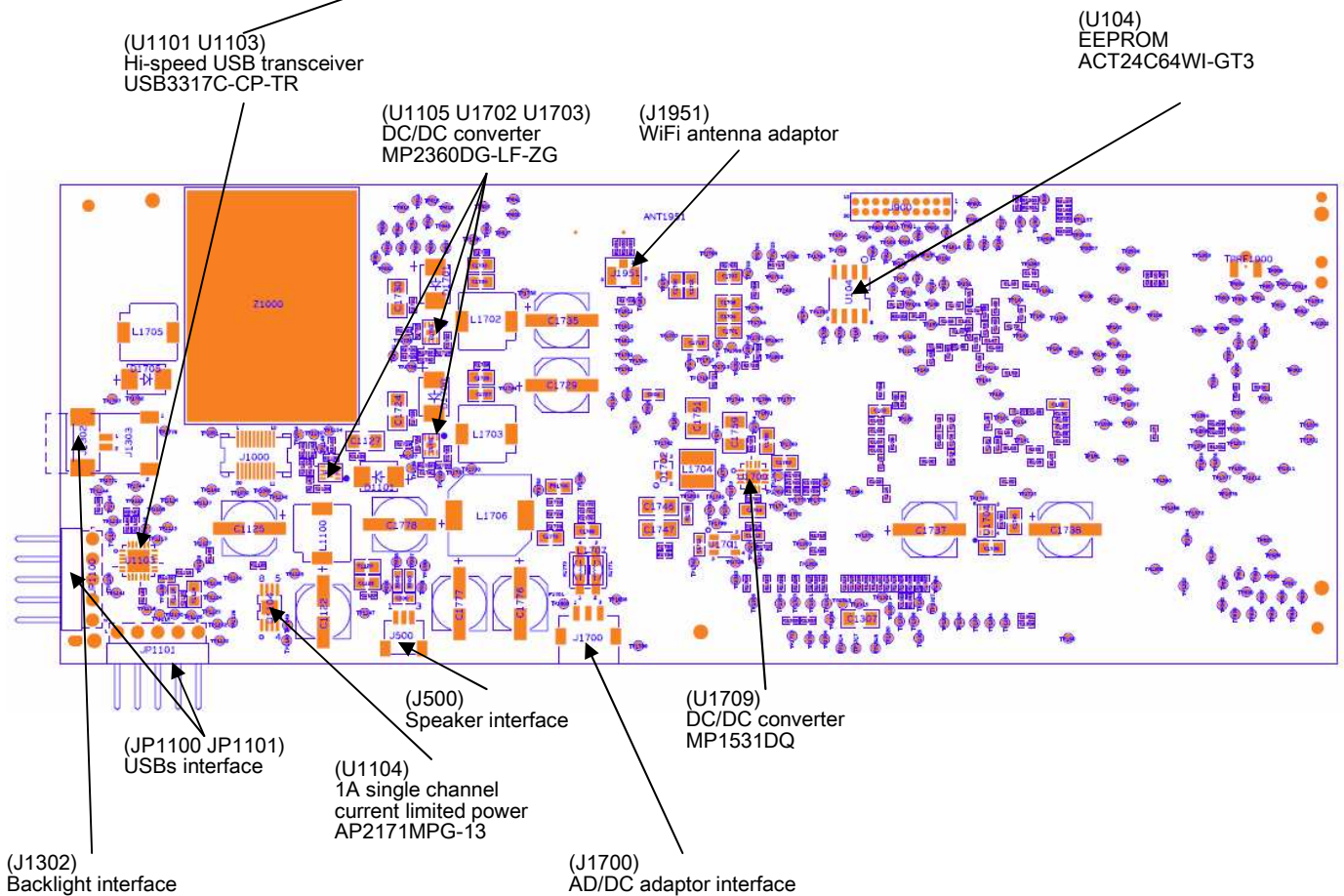
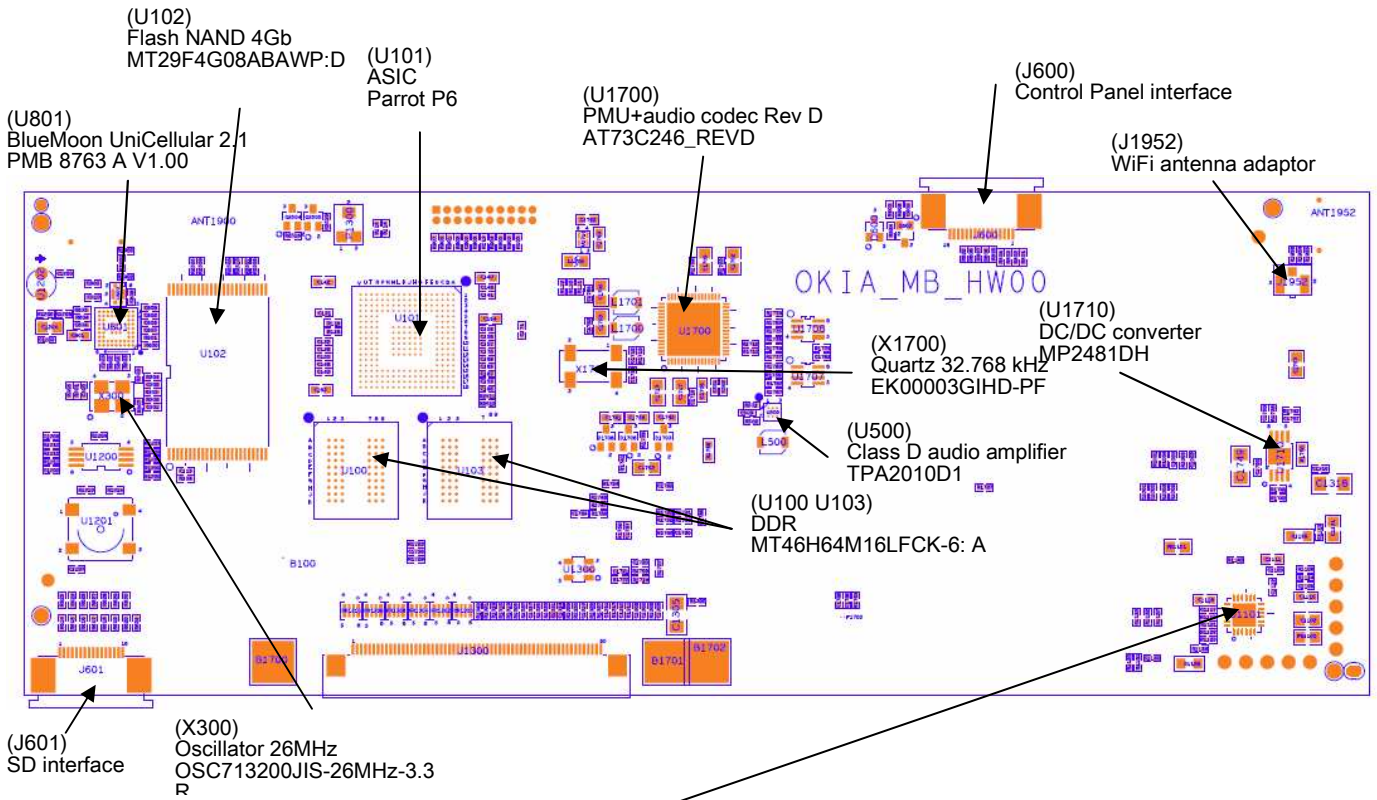


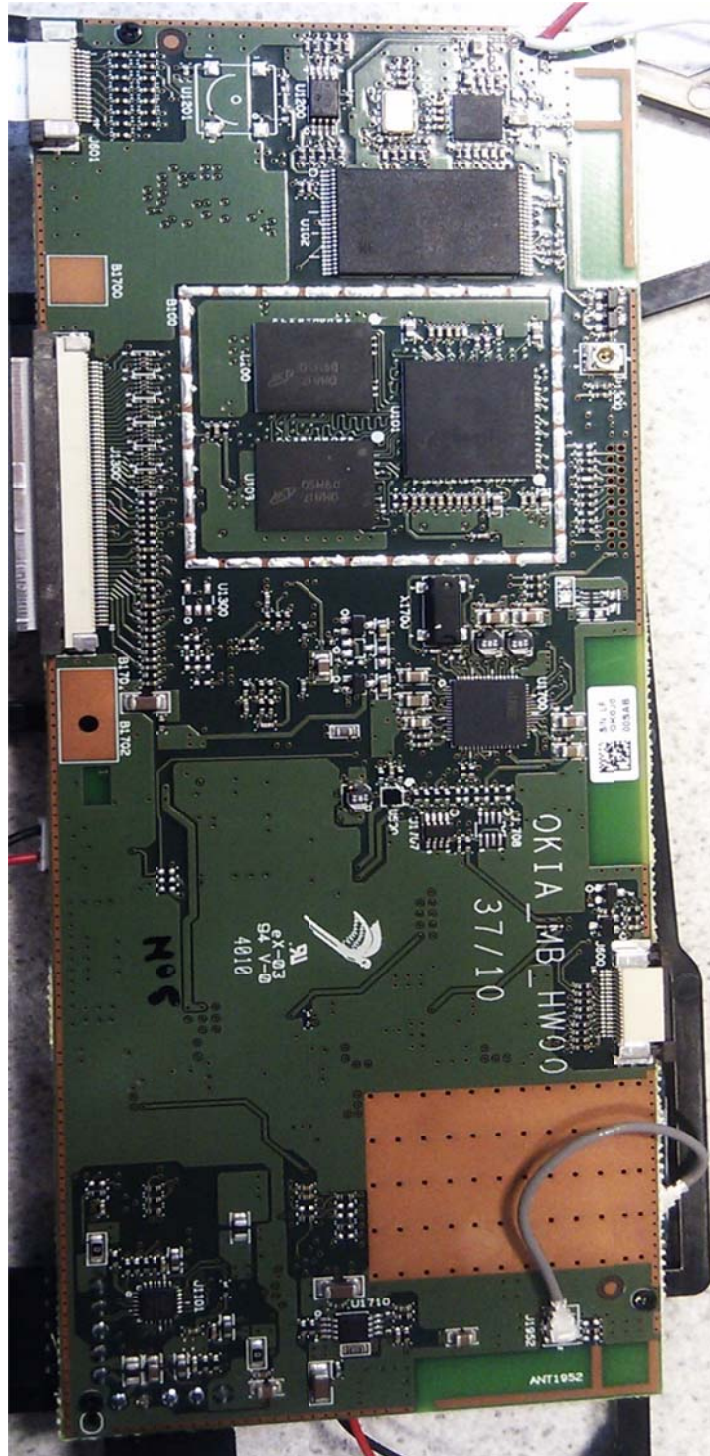
Metallic structure which is creating the air gap of 2cm (visible on top and side views)

LCD

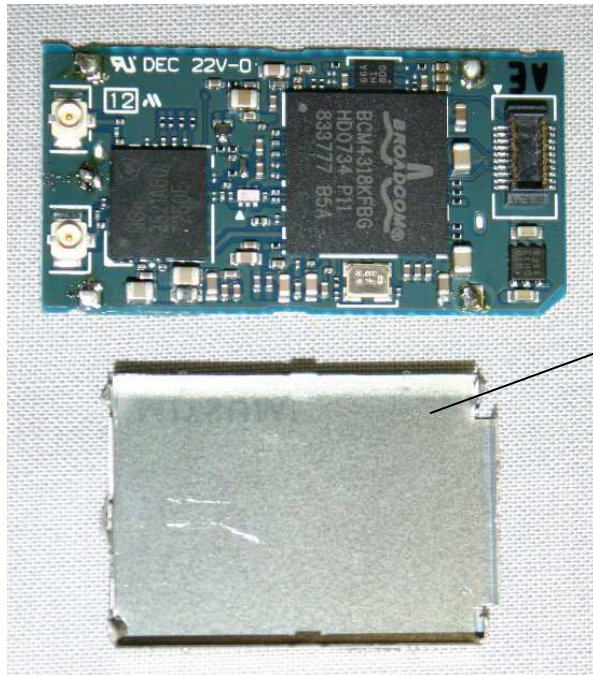
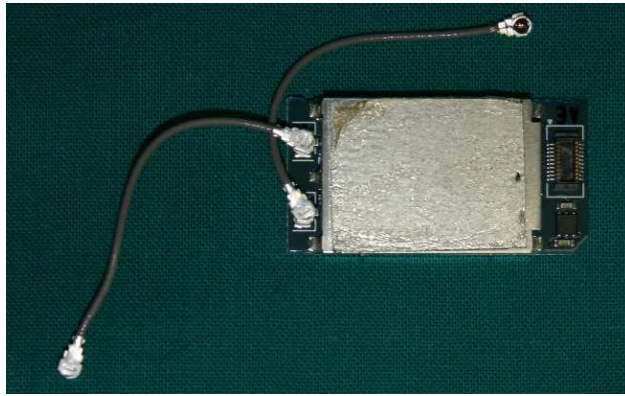
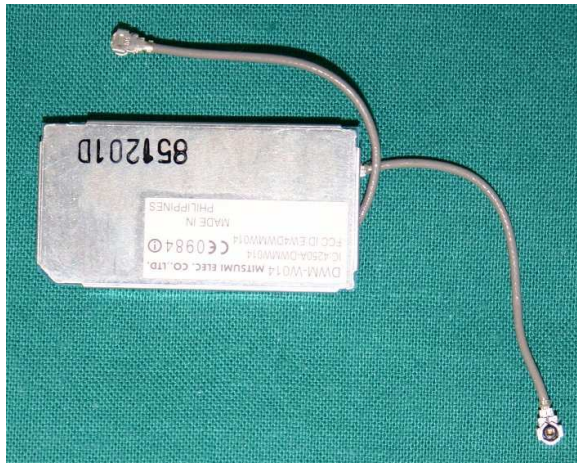




Backside of motherboard.



PCB layout (WiFi module board 1/2)



shield

PCB layout (WiFi module board 2/2)

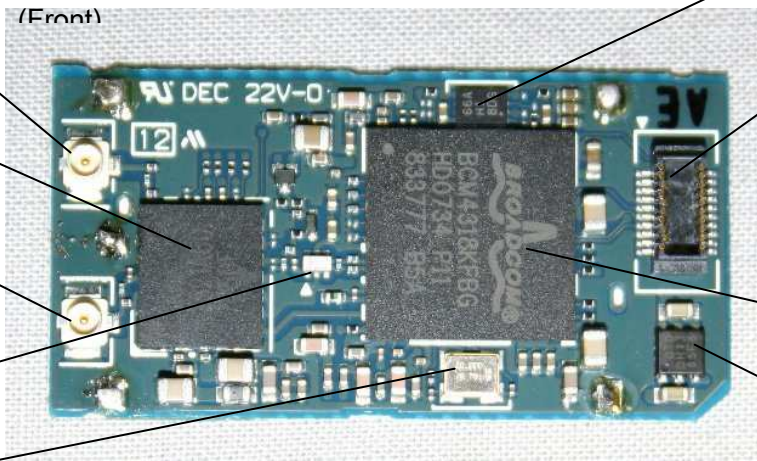
Antenna2 terminal

(U5)
Front end module
SE2521A60

Antenna1 terminal

(U6)
Balun
LDB182G5010G

(X1)
20MHz Xtal
CX-3225SB



(U2)
EEPROM
AT93C66A

(J1)
Connector

(U1)
MAC BB/RF
BCM4318

(U3)
1.8V LDO
S-1170B18PD



PCB layout (Control panel)

(Front)



(U2605)
Capacitive buttons controller
QT1081_ISG

(back)



(SW2601)
Trackball

(U2601 - U2602 - U2604 - U2604)
Trackball controllers
AN4841B