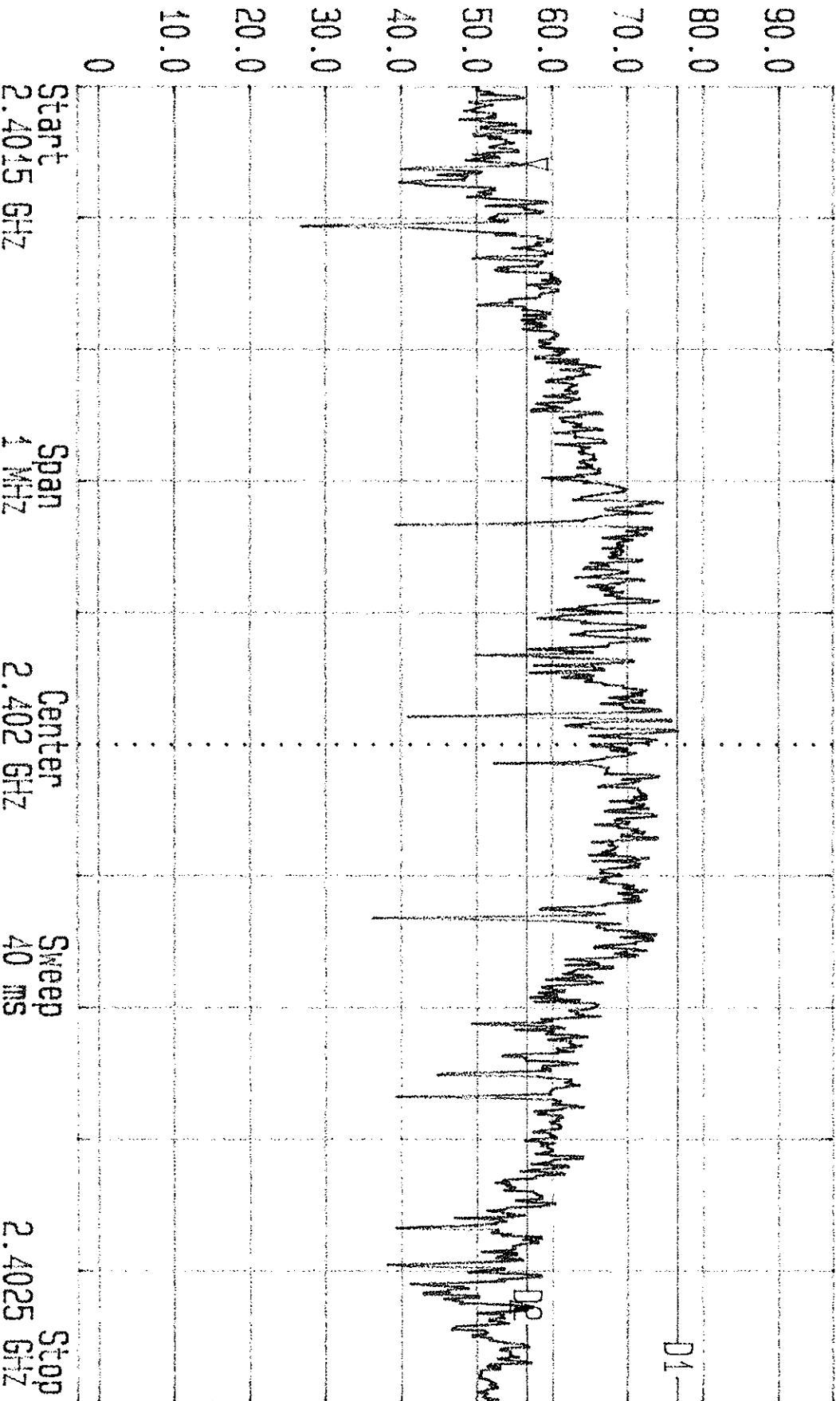




Date 02.Nov.'06 Time 11:38:16  
Ref.Lvl 97.00 dBuV Delta 1.35 dB  
867.7 KHz

Res.Bw 10.0 KHz [3dB]  
T6.Lvl 16.0 dB  
CF.Stp 100.000 KHz

Vid.Bw 10 KHz  
RF.Att 0 dB  
Unit [dBuV]



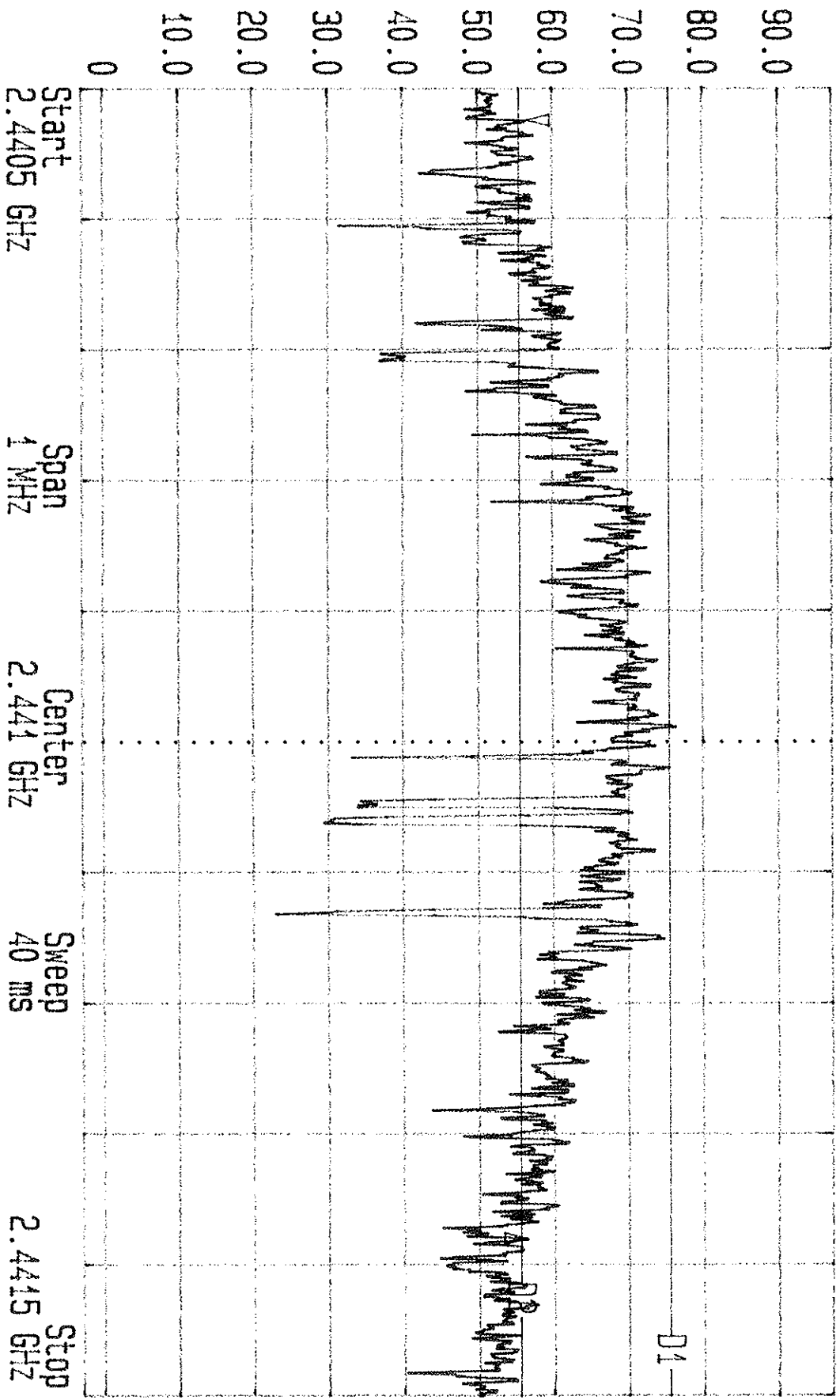
Start 2.4015 GHz Span 1 MHz Center 2.402 GHz Sweep 40 ms Stop 2.4025 GHz



Date 02.Nov.'06 Time 11:31:30  
 Ref.Lvl 97.00 dBuV Delta -0.07 dB  
 855.5 KHz

Res.Bw 10.0 KHz [3dB] 16.Lvl  
 CF.Stp 100.000 KHz

Vid.Bw 10 KHz  
 RF.Att 0 dB  
 Unit [dBuV]

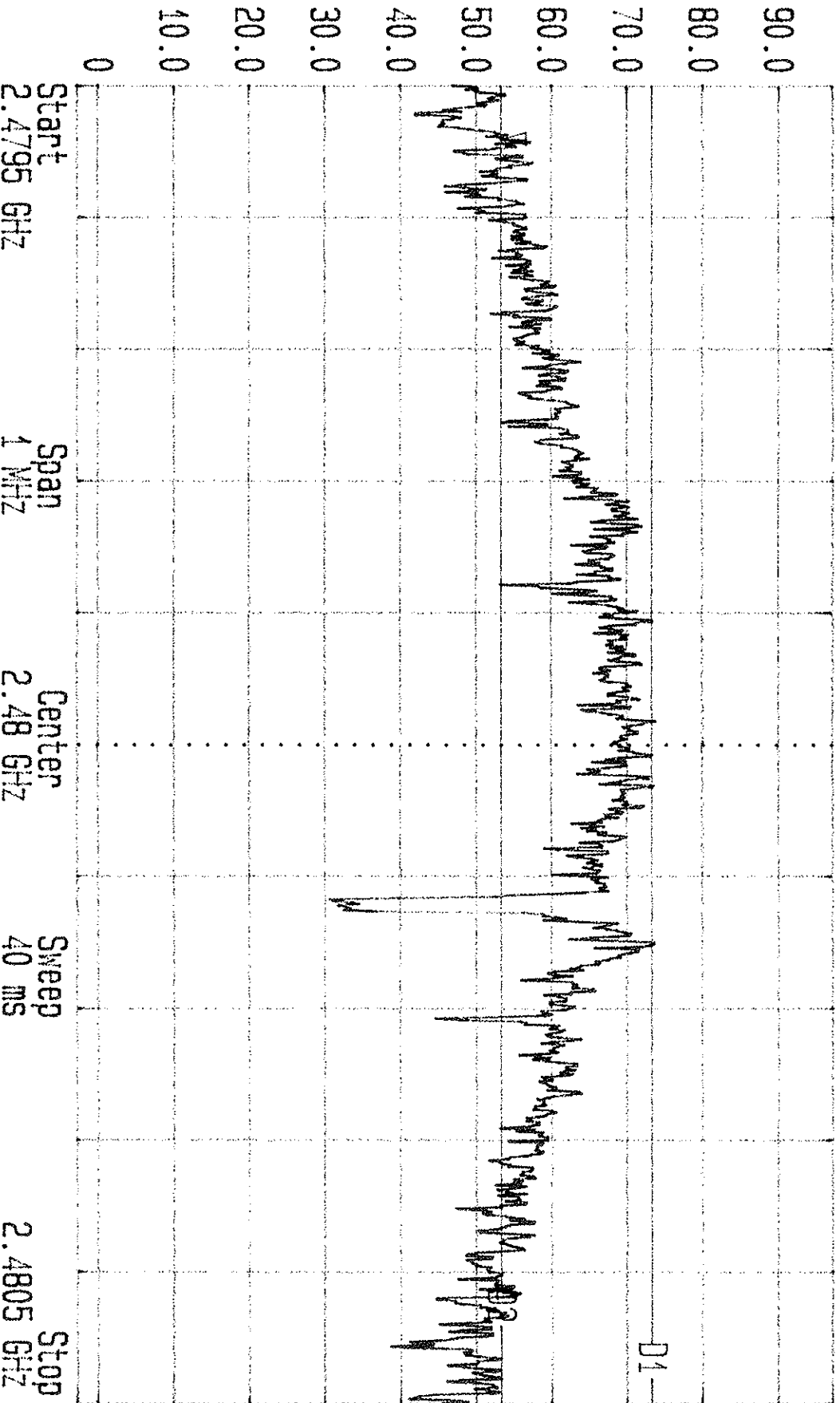


Start 2.4405 GHz Span 1 MHz Center 2.441 GHz Sweep 40 ms Stop 2.4415 GHz



Date 02.Nov.'06 Time 11:19:38  
 Ref.Lvl 97.00 dBuV Delta 2.28 dB  
 876.6 kHz

Res.BW 10.0 kHz [3dB] Vid.BW 10 kHz  
 TG.Lvl off CF.Stp 100.000 kHz  
 RF.Att 0 dB Unit [dBuV]



Start 2.4795 GHz Span 1 MHz Center 2.48 GHz Sweep 40 ms Stop 2.4805 GHz