



InterLab[®]

Photo Report

Bluetooth module CK5050+T

Report Reference: MDE_PARRO_1304_FCC_Photo_15c

Test Laboratory:

Borsigstr. 11
Germany
7Layers AG
40880 Ratingen



Note:

The following test results relate only to the devices specified in this document. This report shall not be reproduced in parts without the written approval of the test laboratory.

7 layers AG
Borsigstrasse 11
40880 Ratingen, Germany
Phone: +49 (0) 2102 749 0
Fax: +49 (0) 2102 749 350
www.7Layers.com

Aufsichtsratsvorsitzender •
Chairman of the Supervisory Board:
Ralf Mertens
Vorstand • Board:
Dr. H.-J. Meckelburg

Registergericht • registered in:
Düsseldorf, HRB 44096
USt-IdNr • VAT No.:
DE 203159652
TAX No. 147/5869/0385

1 Photo Report

1.1 Photos of test setups

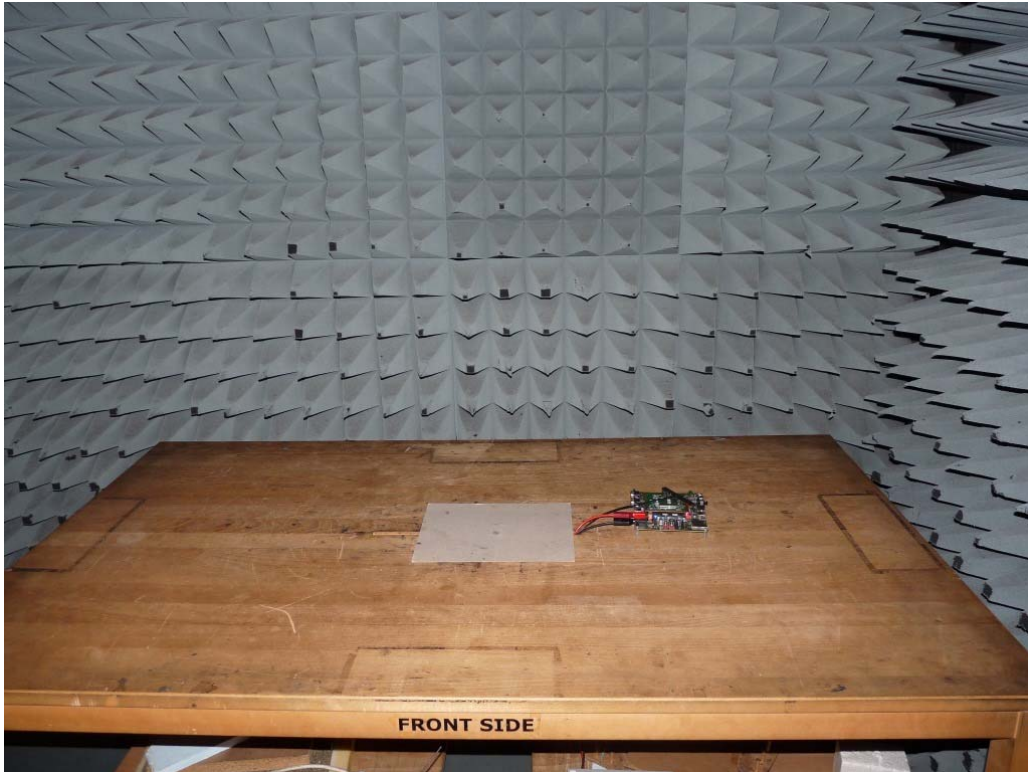


Photo 1: Test setup for radiated measurements (below 30 MHz), FCC 15.247



Photo 2: Test setup for radiated measurements (30 MHz to 1 GHz), FCC 15.247

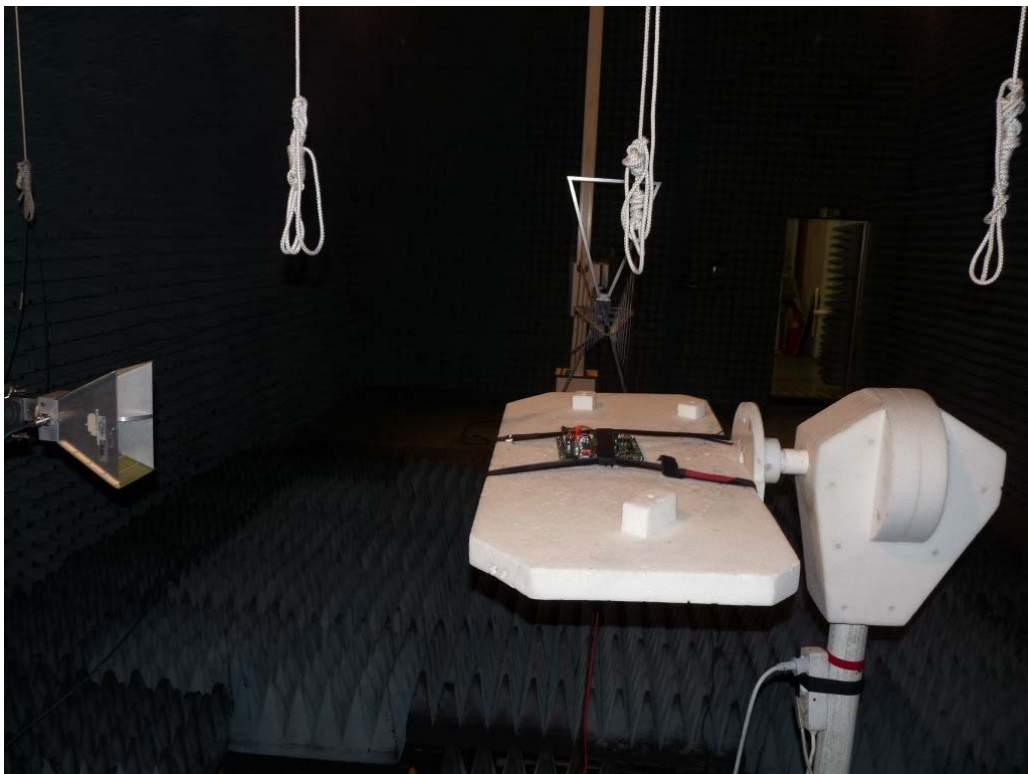


Photo 3: Test setup for radiated measurements (above 1 GHz), FCC 15.247



Photo 4: Test setup for conducted emissions measurements (150 KHz to 30 MHz), FCC 15.247 Module with external Antenna

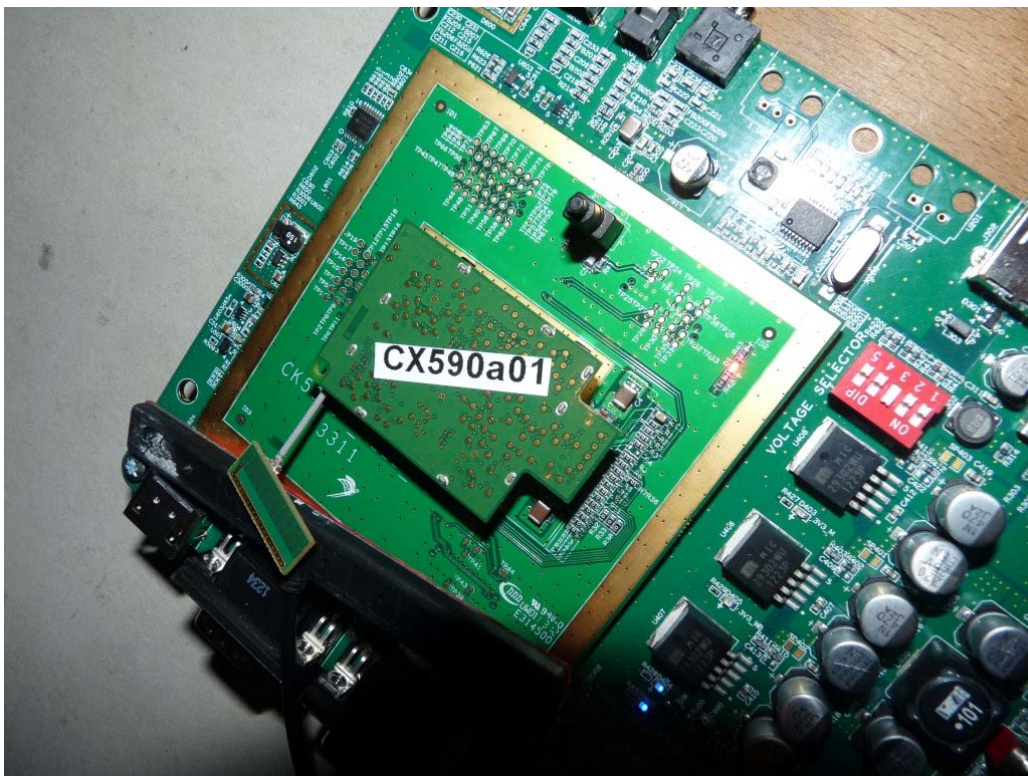


Photo 5: CK5050+T module with the external antenna

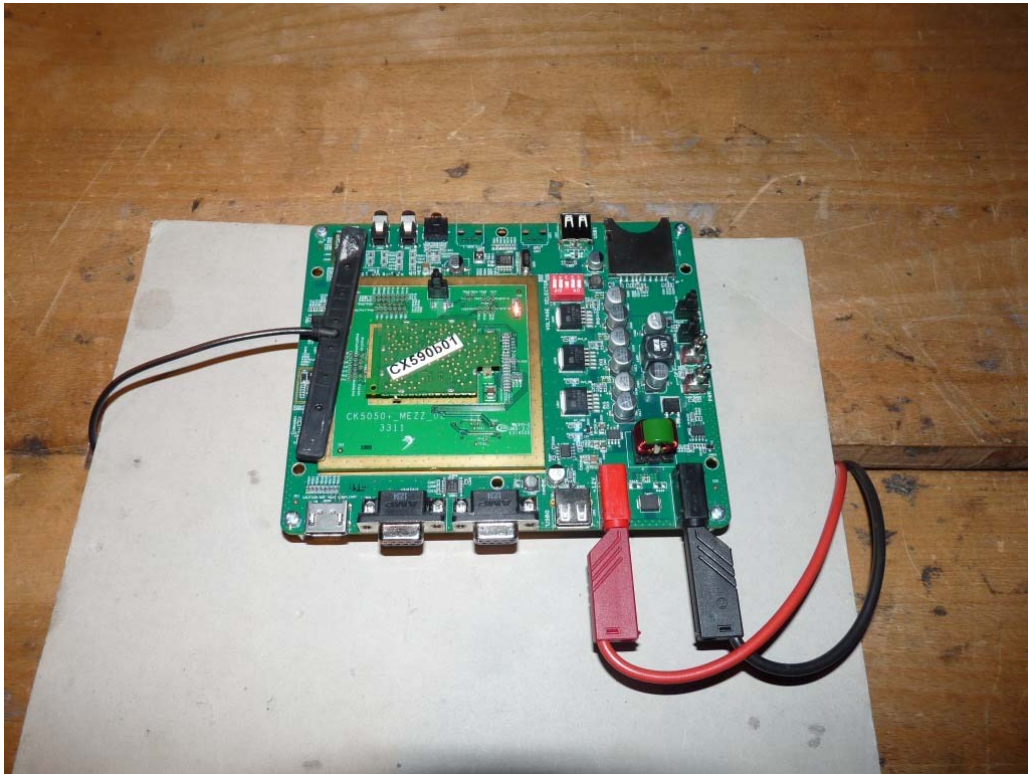


Photo 6: CK5050+T module with the Internal antenna