

15, rue de la Claie
Z.I. Angers-Beaucouzé
49070 BEAUCOUZÉ
Tél. 02 41 73 26 27
Fax 02 41 73 26 40
e-mail : atlantique@emitech.fr
R.C.S. ANGERS 95 B 543
SIRET 344 545 645 00055

RA-03-24397/1/A/ST

FCC CERTIFICATION E.M.C. Measurement Technical Report

**standard to apply:
FCC Part 15**

**Equipment under test:
DRIVE BLUE UNIVERSAL HANDSFREE CAR
KIT FOR BLUETOOTH PHONE
CK3000E**

FCC ID: RKXCK3000E

**Company:
PARROT**

TRANSMIT TO: M. GUERRAB

Company: PARROT

Number of pages: 13 + 4 annexes

Ed.	Date	Modified pages	Editing		Verification Approval	
			Name	Visa	Name	Visa
0	24-Oct-03	Creation	P. BONNENFANT B.P.		Y. JUDEAUX <i>[Signature]</i>	

Duplication of this test report is only permitted for an integral photographic facsimile. It includes the number of pages referenced here above.

This document is the result of testing a specimen or a sample of the product submitted. It does not imply an assessment of the conformity of the whole manufactured products of the tested sample.

SIEGE SOCIAL : EMITECH S.A.

3, rue des Coudriers – Z.A. de l'Observatoire – 78180 MONTIGNY-LE-BRETONNEUX – Tél. 01 30 57 55 55 – Fax 01 30 43 74 48
S.A. AU CAPITAL DE 480 000 € - R.C. VERSAILLES B 344 545 645 – SIRET 344 545 645 000 22 – CODE APE 742 C

PRODUCT: DRIVE BLUE UNIVERSAL HANDSFREE CAR KIT FOR
BLUETOOTH PHONE

Reference / model: CK3000E

Serial number: 025126

MANUFACTURER: PARROT

COMPANY SUBMITTING THE PRODUCT:

Company: PARROT

Address: 174, quai de Jemmapes
75010 PARIS CEDEX
FRANCE

Responsible: GUERRAB

DATE(S) OF TEST: 21, 22, 23 and 24 October 2003

TESTING LOCATION: EMITECH ATLANTIQUE laboratory at ANGERS (49) FRANCE
EMITECH ATLANTIQUE open area test site in LA POUEZE (49)
FRANCE
EMITECH laboratory at MONTIGNY LE BRETONNEUX (78)
FRANCE

Registration Number by FCC: 101696/FRN: 0006 6490 08

Registration Number by Industry Canada: IC4379

TESTED BY: P. BONNENFANT
L. BERTHAUD

CONTENTS

TITLE	PAGE
1. INTRODUCTION.....	4
2. PRODUCT DESCRIPTION	4
3. NORMATIVE REFERENCE.....	4
4. TEST METHODOLOGY	5
5. ADD ATTACHMENTS FILES	5
6. TESTS AND CONCLUSIONS	6
7. PEAK OUTPUT POWER.....	7
8. PEAK POWER DENSITY.....	9
9. RADIATED EMISSION PORTABLE	11
10. APPENDIXES	13
APPENDIX 1: “CHANNEL SEPARATION”	13
APPENDIX 2: “TIMING HOPPING AND TIMING CHANNEL”	13
APPENDIX 3: “PHOTOGRAPHIES OF THE EQUIPEMENT UNDER TEST”	13
APPENDIX 4: “OPEN AREA TEST SITE, TEST SET UP”	13

1.INTRODUCTION

This document presents the result of E.M.C. test carried out on the following equipment: DRIVE BLUE UNIVERSAL HANDSFREE CAR KIT FOR BLUETOOTH PHONE CK3000E in accordance with normative reference.

2.PRODUCT DESCRIPTION

ITU Emission code: 1M00F7D

Classe: B

Utilization: HANDSFREE FOR BLUETOOTH PHONE with voice recognition

Antenna type: incorporated antenna

Operating frequency range: from 2400 MHz to 2483.5 MHz

Number of channels: 79

Channel spacing: 1 MHz

Frequency generation: SAW Resonator Crystal Synthetiser

Modulation: Frequency Hopping Spread Spectrum
 Amplitude Digital Frequency Phase

Power source: 12 Vd.c.

Power level, frequency range and channels characteristics are not user adjustable.

The details pictures of the product, the circuit boards and antennas are joined with this file.

3.NORMATIVE REFERENCE

FCC Part 15 (2003)	Code of Federal Regulations Title 47 - Telecommunication Chapter 1 - Federal Communications Commission Part 15 - Radio frequency devices Subpart C - Intentional Radiators
RSS 210	Low Power Licence - Exempt Radiocommunication Devices (All Frequency Bands)

4. TEST METHODOLOGY

Radio performance tests procedures given in part 15:

- Paragraph 33: frequency range of radiated measurements
- Paragraph 35: measurement detector functions and bandwidths
- Paragraph 207: conducted limits
- Paragraph 205: restricted bands of operation
- Paragraph 209: radiated emission limits; general requirements
- Paragraph 247: operation within the band 2400 – 2483.5 MHz

5. ADD ATTACHMENTS FILES

- “Synoptic”***
- “Block diagram”***
- “External photos and Product labeling”***
- “Assembly of components”***
- “Internal photos”***
- “Layout pcb”***
- “Bil of materials”***
- “Schematics”***
- “Product description”***
- “User guide”***

6. TESTS AND CONCLUSIONS

Test procedure	Description of test	Criteria respected ?				Comment
		Yes	No	NAP	NAs	
FCC Part 15.205	RESTRICTED BANDS OF OPERATION	X				
FCC Part 15.207	CONDUCTED LIMITS			X		Note 4
FCC Part 15.209	RADIATED EMISSION LIMITS; general requirements	X				Note 5
FCC Part 15.247	OPERATION WITHIN THE BAND 2400-2483.5 MHz					
FCC Part 15.247	(a) (1) hopping mode	X				Note 1
FCC Part 15.247	(a) (1) (iii) hopping timing	X				Note 2
FCC Part 15.247	(b) (1) max output power	X				Note 6
FCC Part 15.247	(b) (1) RF exposure compliance			X		Note 3
FCC Part 15.247	(c) intentional radiator	X				
FCC Part 15.247	(d) peak power spectral density	X				Note 6

NAP: Not Applicable

NAs: Not Asked

Note 1: see appendix 1, the frequency hopping system have hopping channel carrier frequencies separated by 1 MHz. The system hop to channel frequencies from a pseudo randomly ordered list of hopping frequencies. Each frequency is used equally on the average by the transmitter, and separated by a minimum of 20 dB bandwidth of the hopping channel.

Note 2: the frequency hopping system use more than 15 non-overlapping channels. The timing by channel is 242 μs (see appendix 2). During 79 channels × 0.4 s (part 15) = 31.6 s, any channel is used 25 times, then 25 × 242 μs = 6.1 ms, thus the average time of occupancy on any channel is less than 400 ms within a period of 0.4 s multiplied by the number of hopping channels employed, in normal operating mode.

Note 3: this type of equipment use less than 0.5 W of output power with a high signal transmitting duty factor (section 3 from Oet 65c).

Note 4: battery source power.

Note 5: see FCC part 15.247 (c).

Note 6: conducted measurement is not possible (integral antenna), so we used the substitution method in open field.

Conclusion:

The sample base station of DRIVE BLUE UNIVERSAL HANDSFREE CAR KIT FOR BLUETOOTH PHONE CK3000E submitted to the tests complies with the regulations of the standard FCC Part 15 in accordance with the limits or criteria defined in this report.

7. PEAK OUTPUT POWER**Standard:** FCC Part 15 (03)**Test procedure:** paragraph 15.247**Test equipment:**

TYPE	BRAND	EMITECH NUMBER
Spectrum analyzer FSEM 30	Rohde & Schwarz	1244
Diode detector OD20004A	Omniiyg	2469
Oscilloscope THS 720	Tektronix	0940
Antenna RGA60	Electrometrics	1938
Antenna RGA60	Electrometrics	1204
Open site	EMITECH	1274
Radio frequency generator SME06	Rohde & Schwarz	1669
Hight pass filter HPM11630	Micro-tronics	1673
Source power	TTI	2148

Test set up:

The system is tested in an open area test site (OATS).

The test unit is placed on a rotating table, 0.8 m from a ground plane. Zero degree azimuth corresponds to the front of the equipment under test.

We use for this measure outdoor test site, by substitution method. The measuring distance between the equipment and the test antenna is 3 m. The antenna have been oriented in the two polarizations, we have recorded only highest level.

In first the spectrum analyzer is replaced by a diode detector which is connected to the vertical channel of an oscilloscope.

The equipment under test is substituted by a signal generator with a calibrated double ridged guide antenna, and its level adjusted such that the deviation of the Y-trace of the oscilloscope.

The output power level of the signal generator is measured with a calibrated RF power meter.

Then a measurement of the electro-magnetic field is realized, with a resolution bandwidth and video bandwidth adjusted at 1 MHz.

Distance of antenna: 3 meters**Antenna height:** 1 to 4 meters**Antenna polarization:** vertical and horizontal**Equipment under test operating condition:**

The equipment is in continuous transmission mode at the highest power level which the transmitter is intended to operate (hopping mode).

The equipment is fitted with an internal antenna, without connector.

Results:

Ambient temperature (°C): 17
 Relative humidity (%): 50

Polarization of test antenna: horizontal (height: 140 cm)
 Position of equipment: use position (azimuth: 176 degrees)

Sample N° 1

		Peak Output Power radiated at these frequencies (W): from 2402 MHz to 2480 MHz	Limits (W)
Normal test conditions	Nominal power source (V): 12	199 x 10 ⁻⁶	1*

* the frequency hopping systems use at least 75 hopping channel.

Sample n° 1 Channel 1

		Level dBµV	Cable loss dB	Antenna factor dB	Electro-magnetic field (dBµV/m):
Normal test conditions	Nominal power source (V): 12	55.7	4.4	28.1	88.2

Sample n° 1 Channel 44

		Level dBµV	Cable loss dB	Antenna factor dB	Electro-magnetic field (dBµV/m):
Normal test conditions	Nominal power source (V): 12	55.2	4.4	28.1	87.7

Sample n° 1 Channel 79

		Level dBµV	Cable loss dB	Antenna factor dB	Electro-magnetic field (dBµV/m):
Normal test conditions	Nominal power source (V): 12	57.2	4.4	28.1	89.7

Test conclusion:

RESPECTED STANDARD

8. PEAK POWER DENSITY

Standard: FCC Part 15 (03)

Test procedure: paragraph 15.247

Test equipment used:

TYPE	MANUFACTURER	EMITECH NUMBER
Spectrum analyzer E4407B	Agilent	3020
Open site	Emitech	1274
Radiofrequency generator SME06	Rohde & Schwarz	1669
Antenna RGA-60	Electrometrics	1938
Antenna RGA-60	Electrometrics	1204
Source power	TTI	2148

Measured condition:

We used the same method of the peak output power, but the oscilloscope and the diode is replaced by a spectrum analyser used in combination with an RF power meter.

Resolution bandwidth: 3 kHz

Video bandwidth: 3 kHz

Test operating condition of the equipment:

Antenna gain (relative to an isotropic antenna): not communicated, integral antenna.

The transceiver is blocking in transmit mode hopping.

Results:

Ambient temperature (°C): 17

Relative humidity (%): 50

Power source (V): 12

Sample n° 1 Channel 1

	Peak power density at frequency: 2402 MHz
Normal test conditions	-19.3 dBm
Limits	+8 dBm

Sample n° 1 Channel 44

	Peak power density at frequency: 2445 MHz
Normal test conditions	-19.8 dBm
Limits	+8 dBm

Sample n° 1 Channel 79

	Peak power density at frequency: 2480 MHz
Normal test conditions	-17.7 dBm
Limits	+8 dBm

Test conclusion:

RESPECTED STANDARD

9.RADIATED EMISSION PORTABLE**Standard:** FCC Part 15 (03)**Test procedure:** paragraph 15.205
paragraph 15.209
paragraph 15.247**Test equipment:**

TYPE	BRAND	EMITECH NUMBER
Test receiver ESH3	Rohde & Schwarz	1058
Test receiver ESVS 10	Rohde & Schwarz	1219
Spectrum analyzer FSEM 30	Rohde & Schwarz	1244
Loop antenna	EMCO	1406
Biconical antenna HP 11966C	Hewlett Packard	728
Log periodic antenna HL 223	Rohde & Schwarz	1999
Open site	Emitech	1274
Antenna RGA-60	Electrometrics	1204
Low-noise amplifier	Microwave DB	1922
High pass filter HP12/3200-5AA	Filtek	
Antenna WR42	IMC	1939
Power source	TTI	2148

Test set up:

The system is tested in an open area test site (OATS).

The test unit is placed on a rotating table, 0.8 m from a ground plane. Zero degree azimuth corresponds to the front of the equipment under test.

Frequency range: from 9 kHz to harmonic 10 ($F_{\text{carrier}} \leq 10 \text{ GHz}$)**Detection mode:** Quasi-peak ($F < 1 \text{ GHz}$)
Average ($F > 1 \text{ GHz}$)**Bandwidth:** 120 kHz ($F < 1 \text{ GHz}$) or 100 kHz, following 15.205 or 15.247
1 MHz ($F > 1 \text{ GHz}$) or 100 kHz, following 15.205 or 15.247**Distance of antenna:** between 30 m and 3 m according the frequencies and the limits.**Antenna height:** 1 to 4 meters**Antenna polarization:** vertical and horizontal**Equipment under test operating condition:**

The equipment is in continuous hopping transmission mode.

Results:

Ambient temperature (°C): 17
 Relative humidity (%): 50

Power source (V): 12

The polarity column refers to the antenna polarity at which the maximum emissions level is measured.

FREQUENCIES (MHz)	Antenna height (cm)	Azimuth (degree)	resolution bandwidth (kHz)	Polarization H: Horizontal V: Vertical	Field strength (dB μ V/m)	Limits (dB μ V/m)	Margin (dB)
2480	140	176	100	H	89.4	-	-
4804	141	185	1000	H	45.7	54**	8.3
4890	141	285	1000	H	49.3	54**	4.7
4960	141	285	1000	H	48.6	54**	5.4

* limit corresponding at 20 dB below the highest level produced by the intentional radiator, in the assigned band.

** restricted bands of operation in 15.205, this limit corresponding at the 15.209 section.

Applicable limits: 20 dB below that in the 100 kHz bandwidth within the band that contains the highest level of the power produced by the equipment, in 100 kHz bandwidth outside the frequency band in which the spread spectrum is operating. In addition radiated emissions which fall in the restricted band, as defined in section 15.205 (c), must also comply with the radiated emission limits specified in section 15.209 (a).

TEST CONCLUSION:

RESPECTED STANDARD

10.APPENDIXES**Appendix 1: "CHANNEL SEPARATION"**

This appendix contains 2 pages.

Appendix 2: "TIMING HOPPING AND TIMING CHANNEL"

This appendix contains 7 pages.

Appendix 3: "PHOTOGRAPHIES OF THE EQUIPEMENT UNDER TEST"

This appendix contains 4 pages.

Appendix 4: "OPEN AREA TEST SITE, TEST SET UP"

This appendix contains 3 pages.

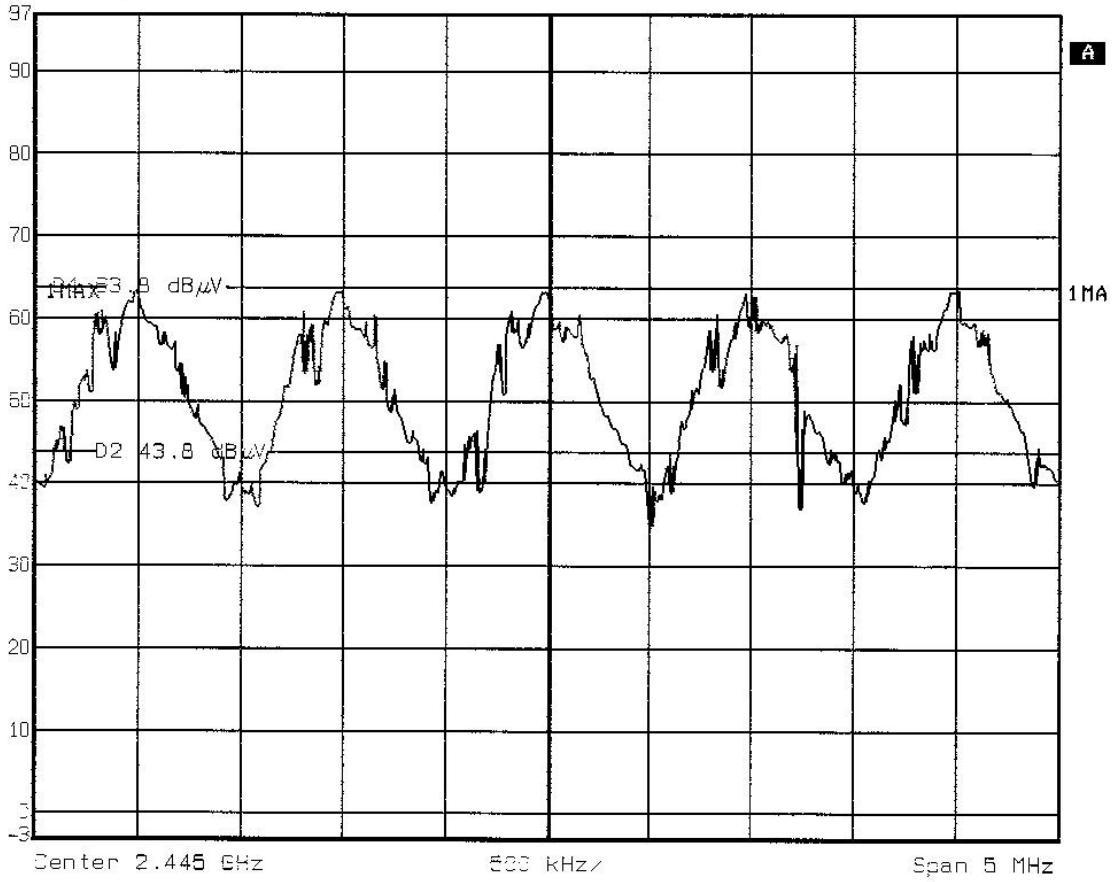
□□□ End of report, 4 appendixes to be forwarded □□□

APPENDIX 1
CHANNEL SEPARATION



Ref Lvl
97 dB μ V

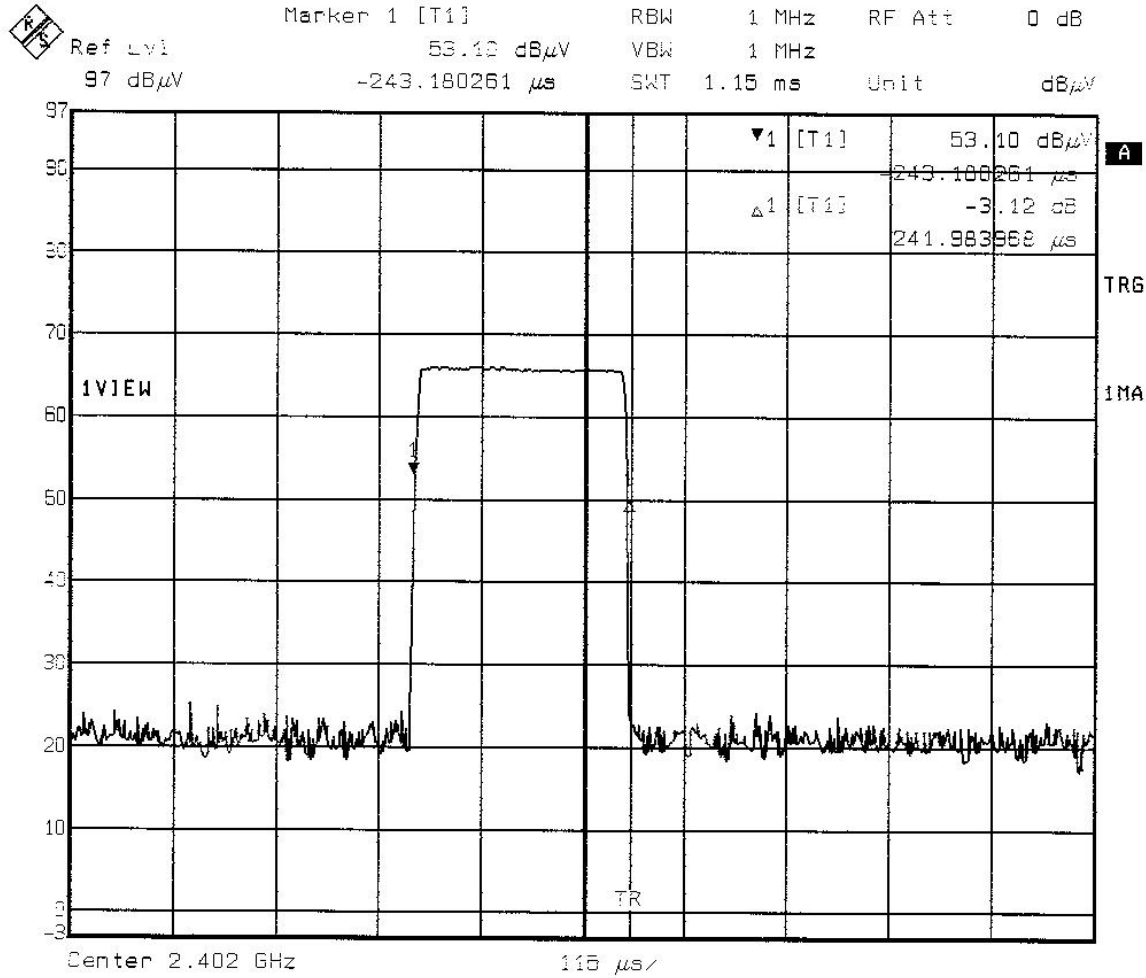
RBW 100 kHz RF Att 0 dB
VBW 10 kHz
Swt 12.5 ms Unit dB μ V



Date: 22.OCT.2003 15:21:27

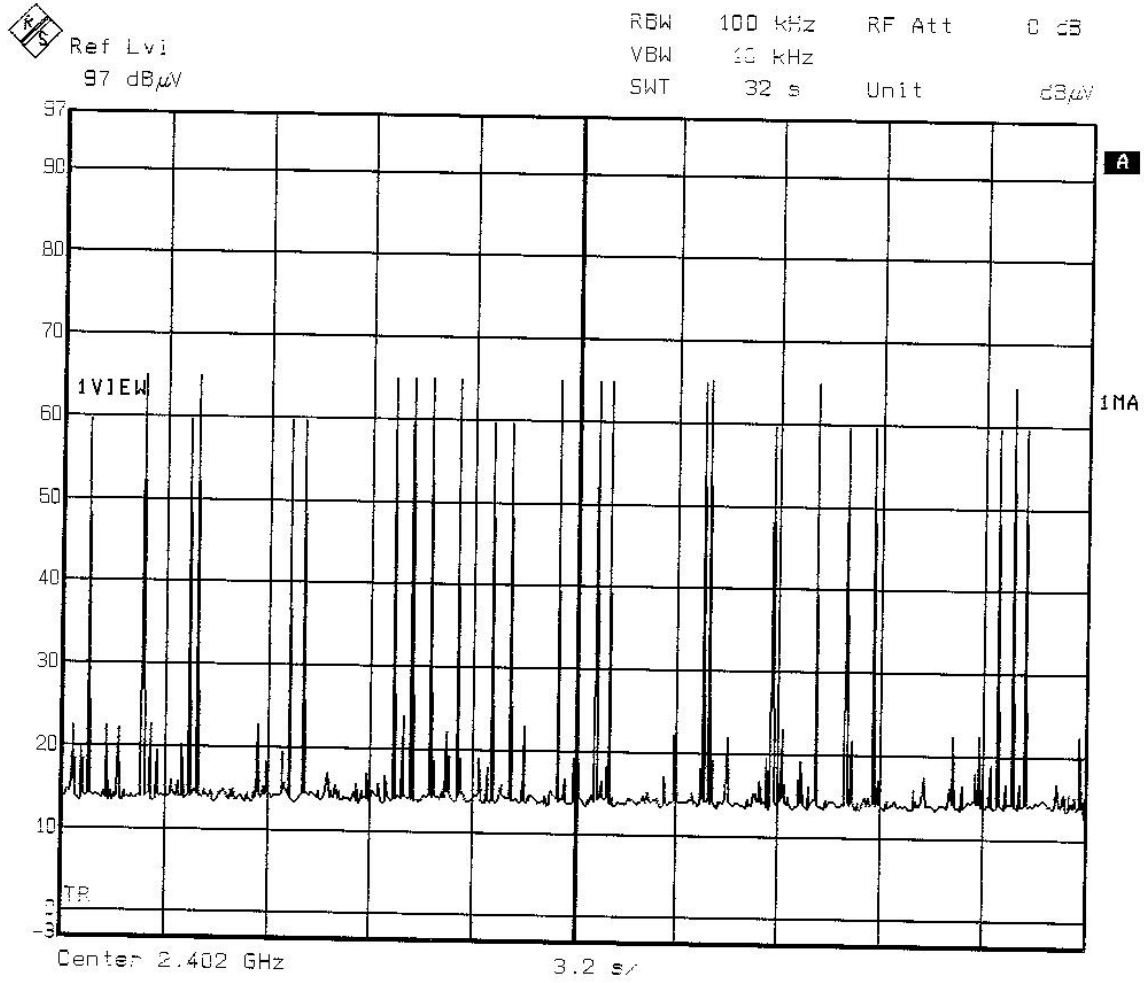
APPENDIX 2

TIMING HOPPING AND TIMING CHANNEL



Date: 22.OCT.2003 16:56:42

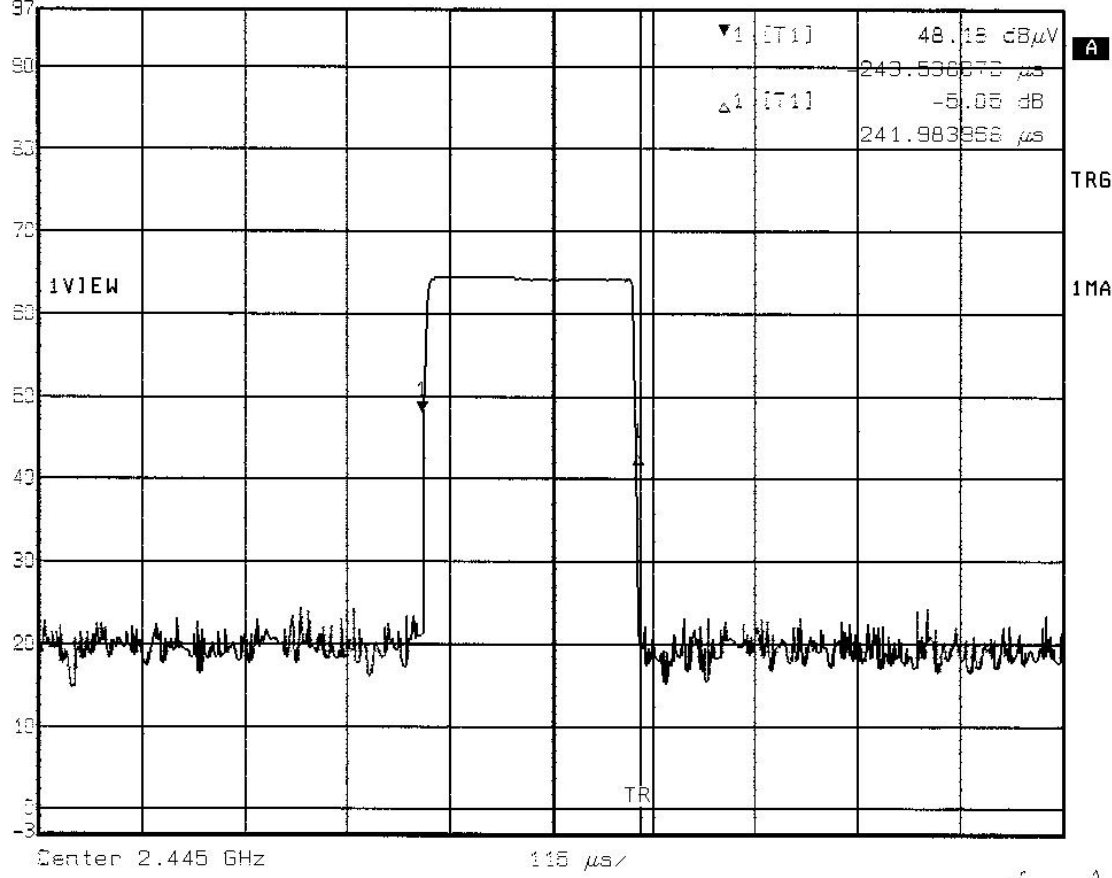
Channel 1



Date: 22.OCT.2003 16:46:03

Channel 1

Marker 1 [T1] RBW 1 MHz RF Att 0 dB
Ref Lvl 48.18 dBμV VBW 1 MHz
97 dBμV -243.538075 μs SWT 1.15 ms Unit dBμV



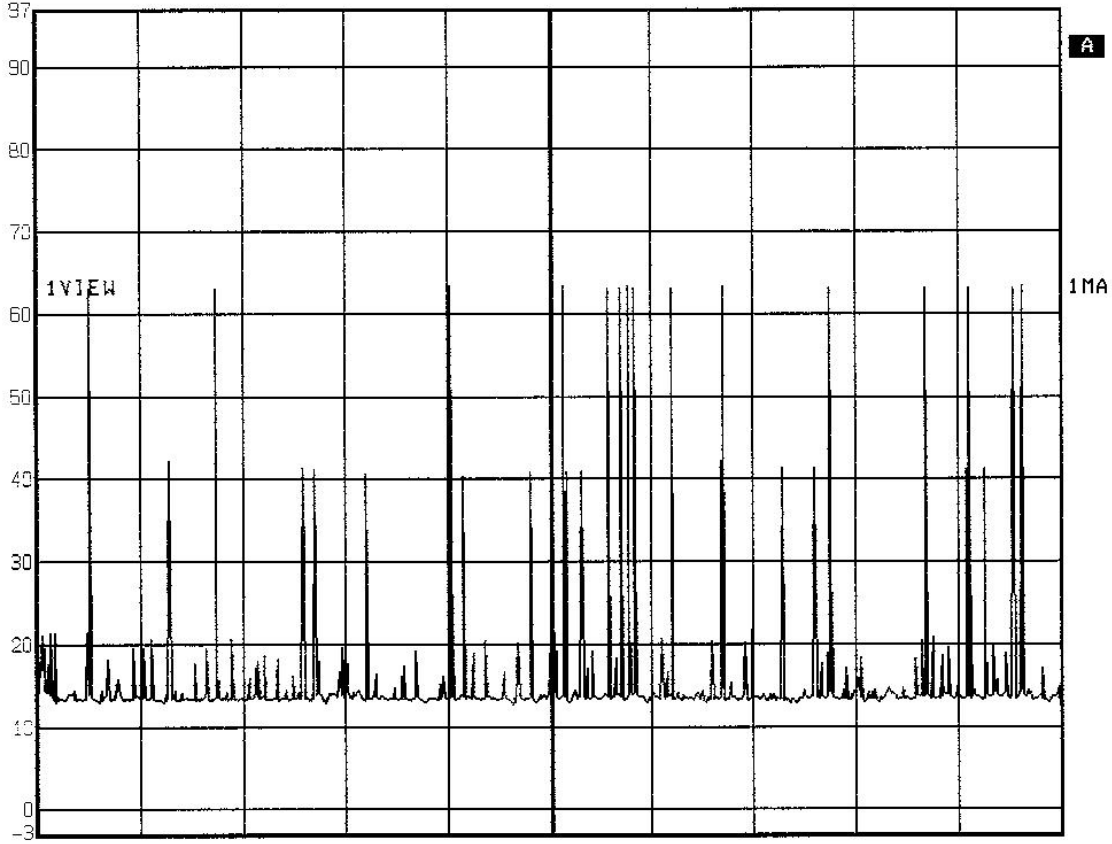
Date: 22.OCT.2003 14:09:18

Channel 46



Ref Lvl
97 dB μ V

RBW 100 kHz RF Att 0 dB
VBW 10 kHz
SWT 32 s Unit dB μ V

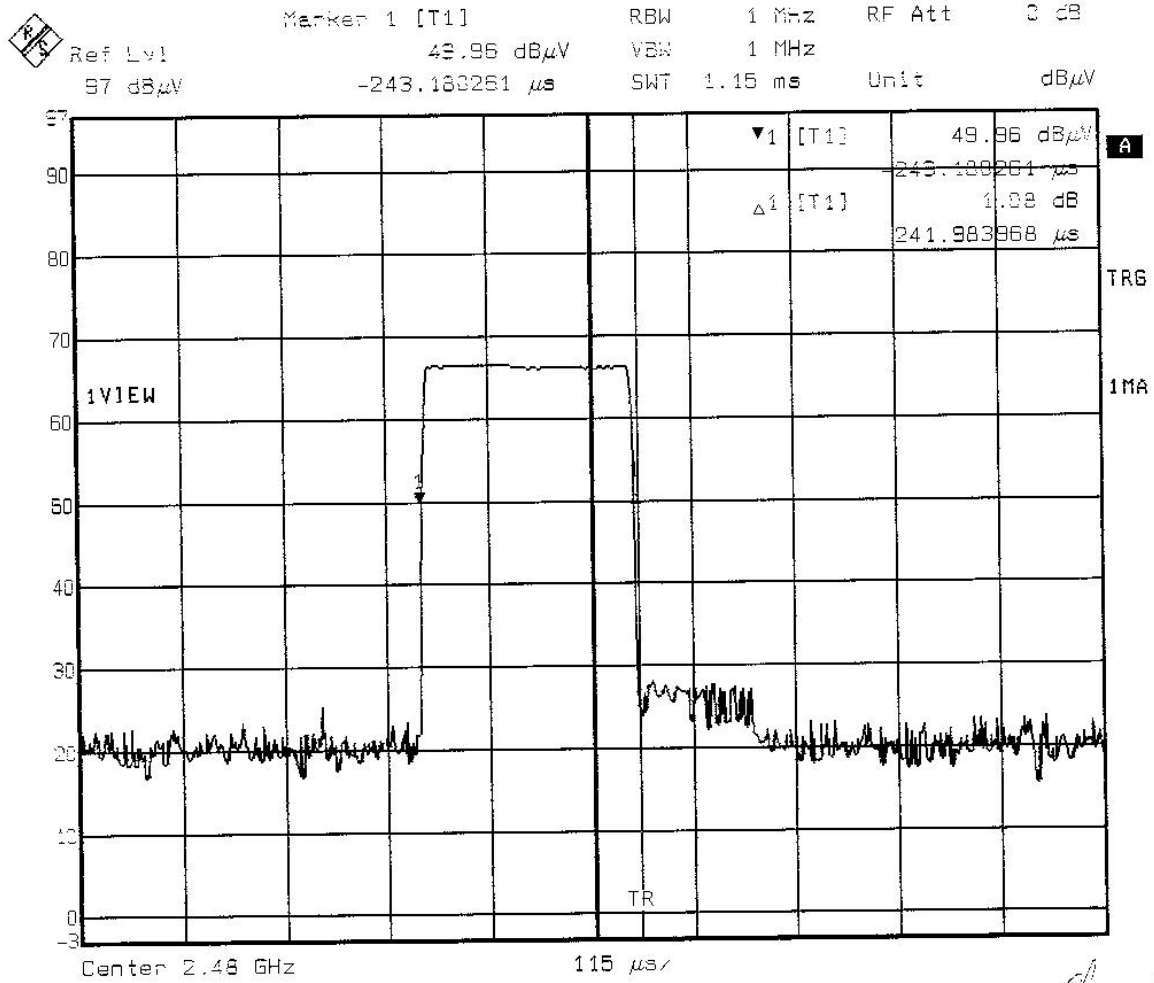


Center 2.445 GHz

3.2 s

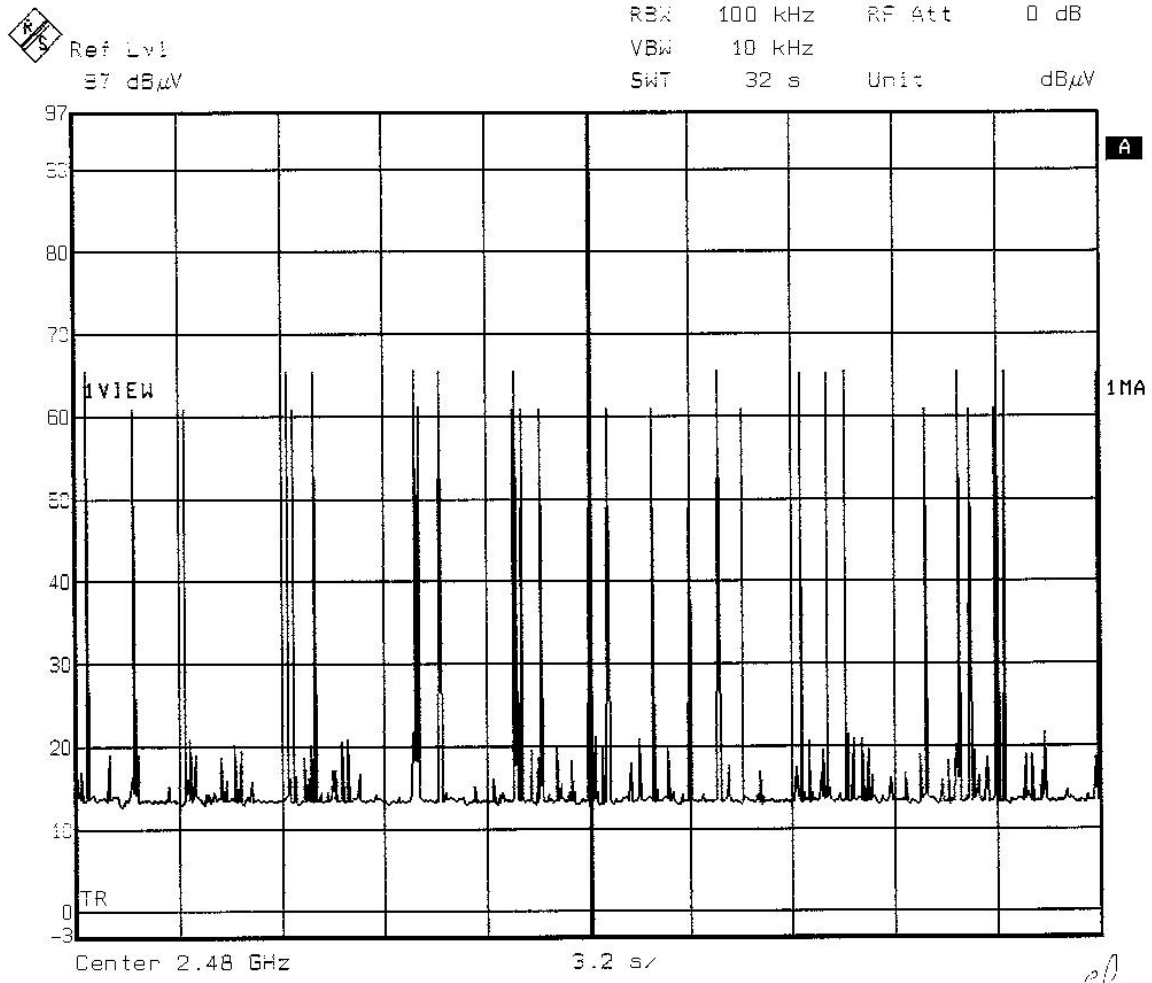
Date: 22.OCT.2003 14:15:00

Channel 44



Date: 22.OCT.2003 16:53:33

Channel 79



Date: 22.OCT.2003 15:51:24

channel 79

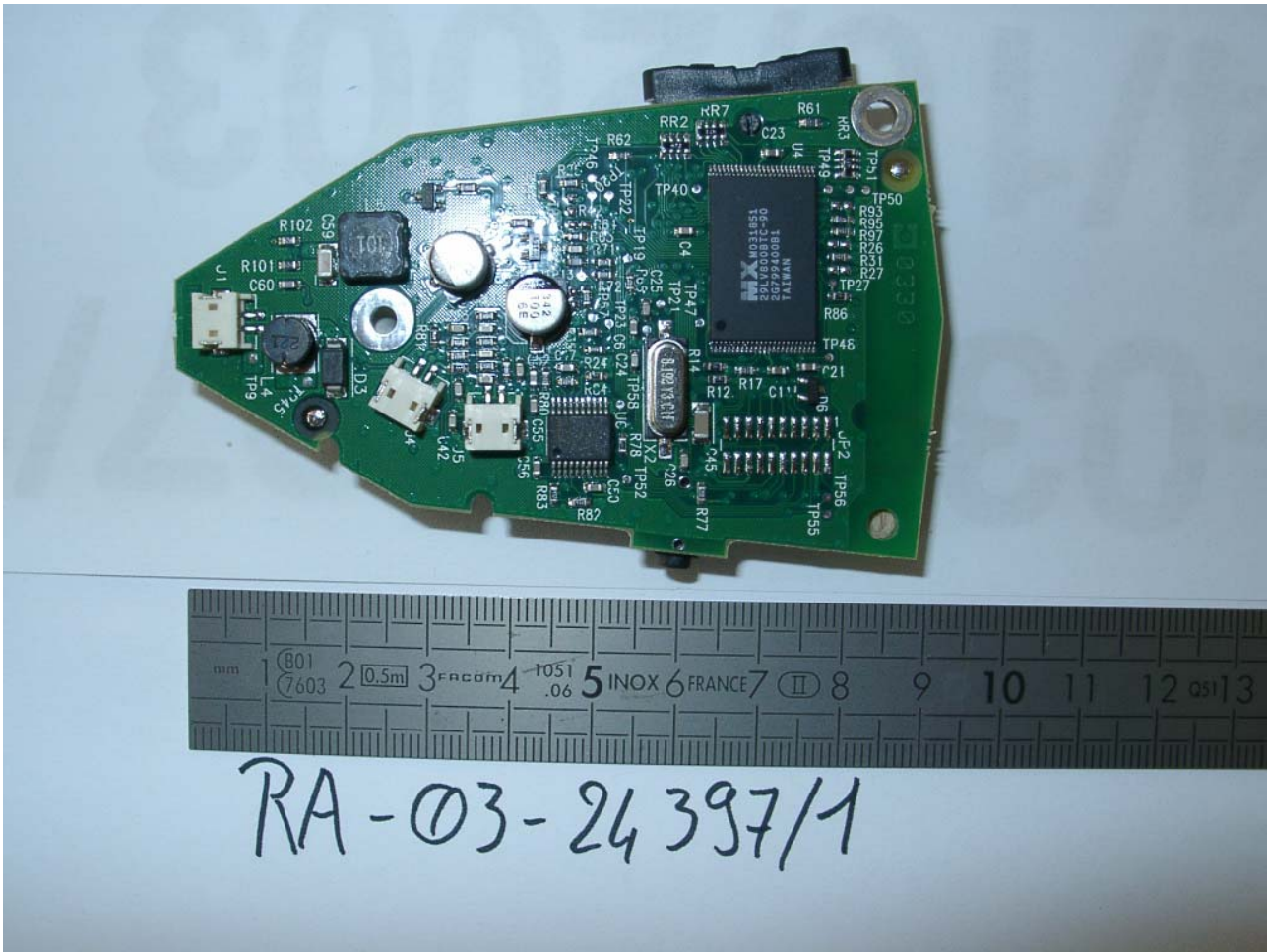
APPENDIX 3

PHOTOGRAPHIES OF THE EQUIPMENT UNDER TEST

PHOTOGRAPHY OF THE EQUIPMENT UNDER TEST RMP60



PCB view: face 1



PCB view: face 2



APPENDIX 4

PHOTOGRAPHIES OPEN AREA TEST SITE, TEST SET UP

PHOTOGRAPHY OPEN AREA TEST SITE



PHOTOGRAPHY TEST SET UP

