

**Specific Absorption Rate (SAR) Test Report**  
for  
**CastleNet Technology Inc.**  
on the  
**Wireless 802.11b Mini PCI Card**

FCC ID: RK9-WM1170  
Report No.: 0392607  
Brand Name: CastleNet  
Model Name: WM1170  
Date of Testing: Jan. 07 , 2004  
Date of Report: Jan. 12, 2004  
Date of Review: Jan. 12, 2004

- The test results refer exclusively to the presented test model / sample only.
- Without written approval of SPORTON International Inc., the test report shall not be reproduced except in full.

***SPORTON International Inc.***

6F, No.106, Sec. 1, Hsin Tai Wu Rd., Hsi Chih, Taipei Hsien, Taiwan, R.O.C.

## Table of Contents

|   |           |
|---|-----------|
| <b>1. Statement of Compliance</b>                 | <b>1</b>  |
| <b>2. Administration Data</b>                     | <b>2</b>  |
| 2.1 Testing Laboratory                            | 2         |
| 2.2 Details of Applicant                          | 2         |
| 2.3 Application Details                           | 2         |
| <b>3. General Information</b>                     | <b>3</b>  |
| 3.1 Description of EUT                            | 3         |
| 3.2 Applied Standards                             | 4         |
| 3.3 Device Category and SAR Limits                | 4         |
| 3.4 Test Conditions                               | 5         |
| 3.4.1 Ambient Conditions                          | 5         |
| 3.4.2 Test Configuration                          | 5         |
| <b>4. Specific Absorption Rate (SAR)</b>          | <b>6</b>  |
| 4.1 Introduction                                  | 6         |
| 4.2 SAR definition                                | 6         |
| <b>5. SAR Measurement System</b>                  | <b>7</b>  |
| 5.1 DASY4 E-Field Probe System                    | 8         |
| 5.1.1 ET3DV6 E-Field Probe Specification          | 9         |
| 5.1.2 ET3DV6 E-Field Probe Calibration            | 9         |
| 5.2 Data Acquisition Electronic (DAE) System      | 10        |
| 5.3 Robot   | 11        |
| 5.4 Measurement Server                            | 11        |
| 5.5 SAM phantom                                   | 11        |
| 5.6 Data Storage and Evaluation                   | 13        |
| 5.6.1 Data Storage                                | 13        |
| 5.6.2 Data Evaluation                             | 13        |
| 5.7 Test Equipment List                           | 16        |
| <b>6. Tissue Simulating Liquids</b>               | <b>17</b> |
| <b>7. Uncertainty Assessment</b>                  | <b>19</b> |
| <b>8. SAR Measurement Evaluation</b>              | <b>21</b> |
| 8.1 Purpose for System Performance Check          | 21        |
| 8.2 Equipments Set up                             | 21        |
| 8.3. Validation Results                           | 22        |
| <b>9. Description for EUT Testing Position</b>    | <b>23</b> |
| <b>10. Measurement Procedure</b>                  | <b>25</b> |
| 10.1 Spatial Peak SAR Evaluation                  | 25        |
| 10.2 Scan Procedures                              | 26        |
| 10.3 SAR Averaged methods                         | 26        |
| <b>11. SAR Test Results</b>                       | <b>27</b> |
| 11.1 NB Bottom Touch                              | 27        |
| 11.2 NB Bottom with 1.5 cm Gap                    | 27        |
| 11.3 NB Side Touch                                | 27        |
| <b>12. Reference</b>                              | <b>28</b> |
| <b>Appendix A - System Performance Check Data</b> |           |
| <b>Appendix B - SAR Measurement Data</b>          |           |
| <b>Appendix C – Calibration Data</b>              |           |

**Appendix D –Photographs of DUT**

**1. Statement of Compliance**

The Specific Absorption Rate (SAR) maximum result found during testing for the CastleNet Technology Inc. WM1170 is 1.4 W/Kg with expanded uncertainty 19.6%. It is in compliance with Specific Absorption Rate (SAR) for general population/uncontrolled exposure limits specified in FCC 47 CFR part 2 (2.1093) and ANSI/IEEE C95.1-1999 and had been tested in accordance with the measurement methods and procedures specified in OET Bulletin 65 Supplement C (Edition 01-01).

Tested by Kevin Yang



---

Kevin Yang  
Project Leader  
Jan 07, 2004

Reviewed by Daniel Lee



---

Dr. C.H. Daniel Lee  
SAR Lab. Manager  
Jan 12, 2004

**2. Administration Data**

**2.1 Testing Laboratory**

**Company Name :** Sporton International Inc.  
**Department :** Antenna Design/SAR  
**Address :** No.52, Hwa-Ya 1<sup>st</sup> RD., Hwa Ya Technology Park, Kwei-Shan Hsiang,  
TaoYuan Hsien, Taiwan, R.O.C.  
**Telephone Number :** 886-3-327-3456  
**Fax Number :** 886-3-327-0973

**2.2 Detail of Applicant**

**Company Name :** CastleNet Technology Inc.  
**Address :** 6F, No.957, Chung Cheng Rd., Chung-Ho City, Taipei Hsien, Taiwan, R.O.C.  
**Telephone Number :** 886-2-8227-7899  
**Fax Number :** 886-2-2223-7507  
**Contact Person :** sandypao@castlenet.com.tw

**2.3 Application Detail**

**Start of test :** Jan 07,2004  
**End of test :** Jan 07,2004

**3. Scope**

**3.1 Description of Device Under Test (DUT)**

|                                |                                |
|--------------------------------|--------------------------------|
| <b>DUT Type :</b>              | Wireless 802.11b Mini PCI Card |
| <b>Trade Name :</b>            | CastleNet                      |
| <b>Model Name :</b>            | WM1170                         |
| <b>FCC ID :</b>                | RK9-WM1170                     |
| <b>Rx &amp; Tx Frequency :</b> | 2412~2462 MHz                  |
| <b>Interface :</b>             | USB                            |
| <b>Antenna Type :</b>          | Embedded PCB antenna           |
| <b>Antenna Gain :</b>          | 1.3 dBi                        |
| <b>MAC :</b>                   | 00-30-54-AA-A8-4B              |
| <b>Type of Modulation :</b>    | DSSS (BPSK,QPSK,CCK)           |
| <b>Operation Temperature :</b> | 0~60C                          |
| <b>DUT Stage</b>               | Identical prototype            |
| <b>Application Type :</b>      | Certification                  |

### **3.2 Applied Standards:**

The Specific Absorption Rate (SAR) testing specification, method and procedure for this WLAN USB2.0 Pen-Type Adapter is in accordance with the following standards:

47 CFR Part 2 ( 2.1093),  
IEEE C95.1-1999,  
IEEE C95.3-1991,  
IEEE P1528 -200X, and  
OET Bulletin 65 Supplement C (Edition 01-01)

### **3.3 Device Category and SAR Limits**

This device belongs to portable device category because its radiating structure is allowed to be used within 20 centimeters of the body of the user.

Limit for General Population/Uncontrolled exposure should be applied for this device, it is 1.6 W/kg as averaged over any 1 gram of tissue.

**3.4 Test Conditions**

**3.4.1 Ambient Condition:**

|   |           |
|---|-----------|
| Ambient Temperature (°C)                  | 21 ~ 23°C |
| Tissue simulating liquid temperature (°C) | 21.5°C    |
| Humidity (%)                              | 40 ~ 60%  |

**3.4.2 Test Configuration:**

Engineering testing software installed on the notebook can provide continuous transmitting RF signal. This RF signal utilized in SAR measurement is continuous wave (CW) and its crest factor is 1. The measurements were performed on the lowest, middle, and highest channel, i.e. channel 1, channel 6, and channel 11 for each testing position. However, if the SAR value is 3 dB lower than SAR limit, only one channel is tested for this testing position.



## **4. Specific Absorption Rate (SAR)**

### **4.1 Introduction**

SAR is related to the rate at which energy is absorbed per unit mass in an object exposed to a radio field. The SAR distribution in a biological body is complicated and is usually carried out by experimental techniques or numerical modeling. The FCC recommends limits for two tiers of groups, occupational/controlled and general population/uncontrolled, based on a person's awareness and ability to exercise control over his or her exposure. In general, occupational/controlled exposure limits are higher than the limits for general population/uncontrolled.

### **4.2. SAR Definition**

The SAR definition is the time derivative (rate) of the incremental energy (dW) absorbed by (dissipated in) an incremental mass (dm) contained in a volume element (dv) of a given density ( $\rho$ ). The equation description is as below:

$$\mathbf{SAR} = \frac{d}{dt} \left( \frac{dW}{dm} \right) = \frac{d}{dt} \left( \frac{dW}{\rho dv} \right)$$

*SAR is expressed in units of Watts per kilogram (W/kg)*

SAR measurement can be either related to the temperature elevation in tissue by

$$\mathbf{SAR} = C \frac{\delta T}{\delta t}$$

, where C is the specific heat capacity,  $\delta T$  is the temperature rise and  $\delta t$  the exposure duration,

or related to the electrical field in the tissue by

$$\mathbf{SAR} = \frac{\sigma |E|^2}{\rho}$$

, where  $\sigma$  is the conductivity of the tissue,  $\rho$  is the mass density of the tissue and  $E$  is the rms electrical field strength.

However for evaluating SAR of low power transmitter, electrical field measurement is typically applied.

### 5. SAR Measurement Setup

Remote Control Box

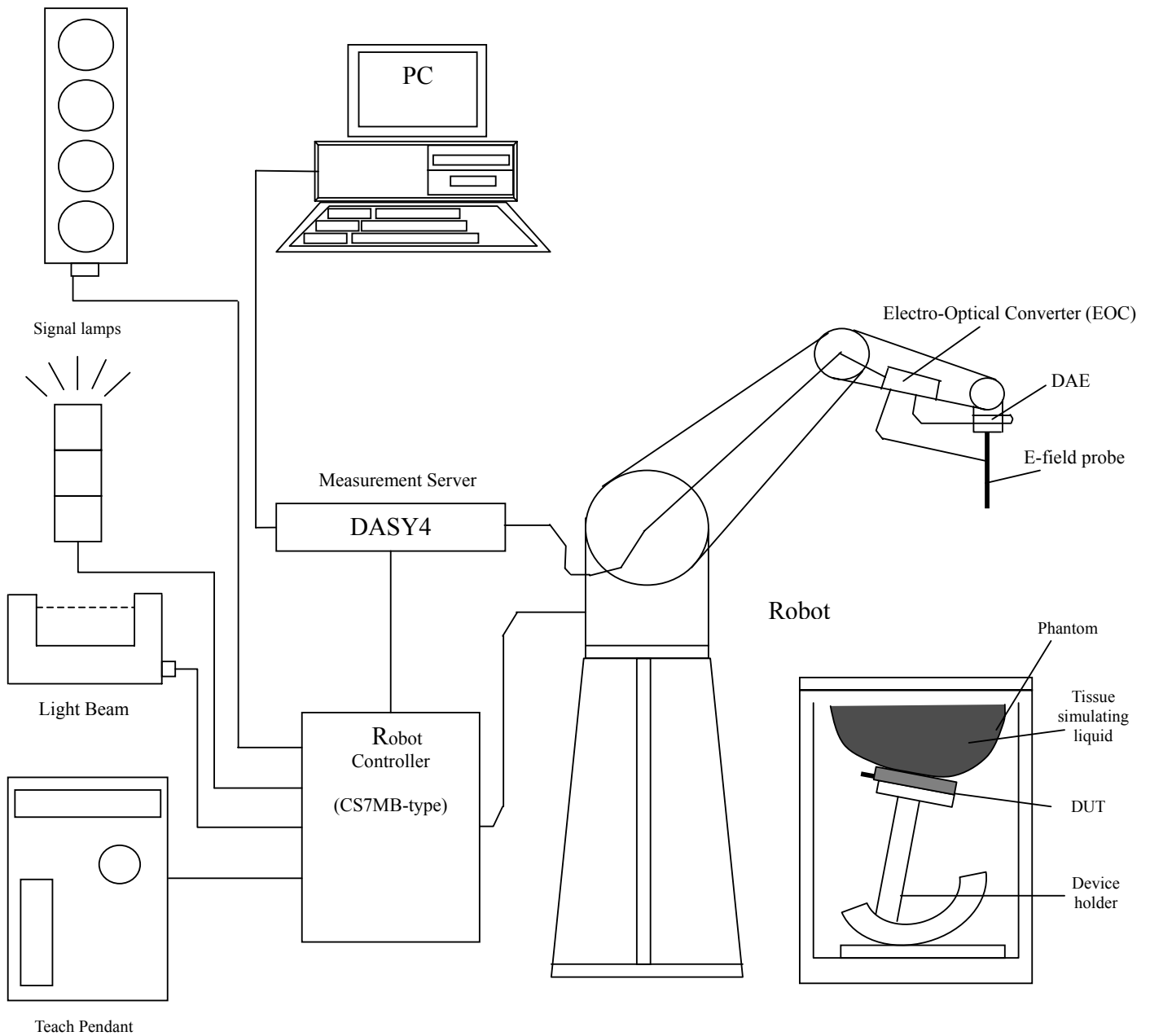


Fig. 5.1 DASY4 system

---

The DASY4 system for performance compliance tests is illustrated above graphically. This system consists of the following items:

- A standard high precision 6-axis robot with controller, a teach pendant and software
- A data acquisition electronic (DAE) attached to the robot arm extension
- A dosimetric probe equipped with an optical surface detector system
- The electro-optical converter (ECO) performs the conversion between optical and electrical signals
- A measurement server performs the time critical tasks such as signal filtering, control of the robot operation and fast movement interrupts.
- A probe alignment unit which improves the accuracy of the probe positioning
- A computer operating Windows XP
- DASY4 software
- Remove control with teach pendant and additional circuitry for robot safety such as warning lamps, etc.
- The SAM twin phantom
- A device holder
- Tissue simulating liquid
- Dipole for evaluating the proper functioning of the system

Some of the components are described in details in the following sub-sections.

### **5.1.DASY4 E-Field Probe System**

The SAR measurement is conducted with the dosimetric probe ET3DV6 (manufactured by SPEAG). The probe is specially designed and calibrated for use in liquid with high permittivity. The dosimetric probe has special calibration in liquid at different frequency. This probe has a built in optical surface detection system to prevent from collision with phantom.

Calibration: Required once a year.

**5.1.1. ET3DV6 E-Field Probe Specification**

|                          |  |
|--------------------------|--|
| <b>Construction</b>      | Symmetrical design with triangular core<br>Built-in optical fiber for surface detection system<br>Built-in shielding against static charges<br>PEEK enclosure material (resistant to organic solvents) |
| <b>Calibration</b>       | Simulating tissue at frequencies of 900MHz, 1.8GHz and 2.45GHz for brain and muscle (accuracy $\pm 8\%$ )  |
| <b>Frequency</b>         | 10 MHz to > 3 GHz  |
| <b>Directivity</b>       | $\pm 0.2$ dB in brain tissue (rotation around probe axis)<br>$\pm 0.4$ dB in brain tissue (rotation perpendicular to probe axis)   |
| <b>Dynamic Range</b>     | $5 \mu$ W/g to > 100mW/g; Linearity: $\pm 0.2$ dB  |
| <b>Surface Detection</b> | $\pm 0.2$ mm repeatability in air and clear liquids on reflecting surface  |
| <b>Dimensions</b>        | Overall length: 330mm<br>Tip length: 16mm<br>Body diameter: 12mm<br><br>Tip diameter: 6.8mm<br>Distance from probe tip to dipole centers: 2.7mm  |
| <b>Application</b>       | General dosimetry up to 3GHz<br>Compliance tests for mobile phones and Wireless LAN<br>Fast automatic scanning in arbitrary phantoms   |



**Fig. 5.2 Probe setup on robot**

**5.1.2 ET3DV6 E-Field Probe Calibration**

Each probe needs to be calibrated according to a dosimetric assessment procedure with accuracy better than  $\pm 10\%$ . The spherical isotropy shall be evaluated and within  $\pm 0.25$ dB. The sensitivity parameters (NormX, NormY, and NormZ), the diode compression parameter (DCP) and the conversion factor (ConvF) of the probe are tested. The calibration data are as below:

|   |                       |                       |                      |
|---|-----------------------|-----------------------|----------------------|
| <b>Sensitivity</b>  | X axis : 1.68 $\mu$ V | Y axis : 1.62 $\mu$ V | Z axis :1.71 $\mu$ V |
| <b>Diode compression point</b>                            | X axis : 95 mV        | Y axis : 95 mV        | Z axis : 95 mV       |
| <b>Conversion factor</b><br><b>2400~2500 MHz ( Body )</b> | <b>X axis</b>         | <b>Y axis</b>         | <b>Z axis</b>        |
|   | 4.5                   | 4.5                   | 4.5                  |
| <b>Boundary effect</b><br><b>2400~2500 MHz ( Body )</b>   | <b>Alpha</b>          | <b>Depth</b>          |                      |
|   | 1.01                  | 1.74                  |                      |

NOTE:

1. The probe parameters have been calibrated by the SPEAG.
2. For the detailed calibration data is shown in Appendix C.

**5.2 DATA Acquisition Electronics (DAE)**

The data acquisition electronics (DAE4) consists of a highly sensitive electrometer-grade preamplifier with auto-zeroing, a channel and gain-switching multiplexer, a fast 16 bit AD-converter and a command decoder and control logic unit. Transmission to the measurement server is accomplished through an optical downlink for data and status information as well as an optical uplink for commands and the clock.

The mechanical probe mounting device includes two different sensor systems for frontal and sideways probe contacts. They are used for mechanical surface detection and probe collision detection.

The input impedance of the DAE4 is 200M Ohm; the inputs are symmetrical and floating. Common mode rejection is above 80dB.

Calibration: Required once a year. Calibration data is attached in Appendix C.

### **5.3 Robot**

The DASY4 system uses the high precision robots RX90BL type out of the newer series from Stäubli SA (France). For the 6-axis controller DASYS system, the CS7MB robot controller version from Stäubli is used. The RX robot series have many features that are important for our application:

- High precision (repeatability 0.02 mm)
- High reliability (industrial design)
- Jerk-free straight movements
- Low ELF interference (the closed metallic construction shields against motor control fields)
- 6-axis controller

### **5.4 Measurement Server**

The DASY4 measurement server is based on a PC/104 CPU board with  
166 MHz CPU  
32 MB chipset and  
64 MB RAM.

Communication with  
the DAE4 electronic box  
the 16-bit AD-converter system for optical detection and digital I/O interface.

The measurement server performs all the real-time data evaluation for field measurements and surface detection, controls robot movements and handles safety operations.

Calibration: No calibration required.

### **5.5 SAM Twin Phantom**

The SAM twin phantom is a fiberglass shell phantom with 2mm shell thickness (except the ear region where shell thickness increases to 6mm). It has three measurement areas:

- Left head
- Right head
- Flat phantom

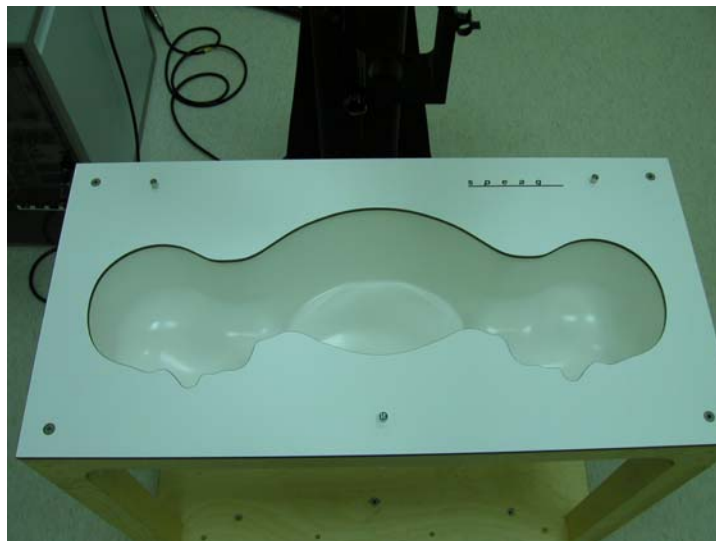
The bottom plate contains three pair of bolts for locking the device holder. The device holder positions are adjusted to the standard measurement positions in the three sections.

A white cover is provided to tap the phantom during off-periods to prevent water evaporation and changes in the liquid parameters.

On the phantom top, three reference markers are provided to identify the phantom position with respect to the robot.

The phantom can be used with the following tissue simulating liquids:

- \*Water-sugar based liquid
- \*Glycol based liquids



**Fig. 5.3 Top view of twin phantom**



**Fig. 5.4 Bottom view of twin phantom**

**5.6 Data Storage and Evaluation**

**5.6.1 Data Storage**

The DASY4 software stores the assessed data from the data acquisition electronics as raw data (in microvolt readings from the probe sensors), together with all the necessary software parameters for the data evaluation (probe calibration data, liquid parameters and device frequency and modulation data) in measurement files with the extension .DA4. The postprocessing software evaluates the desired unit and format for output each time the data is visualized or exported. This allows verification of the complete software setup even after the measurement and allows correction of erroneous parameter settings. For example, if a measurement has been performed with an incorrect crest factor parameter in the device setup, the parameter can be corrected afterwards and the data can be reevaluated.

The measured data can be visualized or exported in different units or formats, depending on the selected probe type (e.g., [V/m], [A/m], [mW/g]). Some of these units are not available in certain situations or give meaningless results, e.g., a SAR-output in a loseless media, will always be zero. Raw data can also be exported to perform the evaluation with other software packages.

**5.6.2 Data Evaluation**

The DASY4 postprocessing software (SEMCAD) automatically executes the following procedures to calculate the field units from the microvolt readings at the probe connector. The parameters used in the evaluation are stored in the configuration modules of the software :

|                            |                           |                                  |
|----------------------------|---------------------------|----------------------------------|
| <b>Probe parameters :</b>  | - Sensitivity             | $Norm_i, a_{i0}, a_{i1}, a_{i2}$ |
|                            | - Conversion factor       | $ConvF_i$                        |
|                            | - Diode compression point | $dcp_i$                          |
| <b>Device parameters :</b> | - Frequency               | $f$                              |
|                            | - Crest factor            | $cf$                             |
| <b>Media parameters :</b>  | - Conductivity            | $\sigma$                         |
|                            | - Density                 | $\rho$                           |

These parameters must be set correctly in the software. They can be found in the component documents or they can be imported into the software from the configuration files issued for the DASY components. In the direct measuring mode of the multimeter option, the parameters of the actual system setup are used. In the scan visualization and export modes, the parameters stored in the corresponding document files are used. The first step of the evaluation is a linearization of the filtered input signal to account for the compression characteristics of the detector diode. The compensation depends on the input signal, the diode type and the DC-transmission factor from the diode to the evaluation electronics. If the exciting field is pulsed, the crest factor of the signal must be known to correctly compensate for peak power. The formula for each channel



can be given as :

$$V_i = U_i + U_i^2 \cdot \frac{cf}{dcp_i}$$

with  $V_i =$  compensated signal of channel  $i$  ( $i = x, y, z$ )  
 $U_i =$  input signal of channel  $i$  ( $i = x, y, z$ )  
 $cf =$  crest factor of exciting field (DASY parameter)  
 $dcp_i =$  diode compression point (DASY parameter)

From the compensated input signals, the primary field data for each channel can be evaluated :

**E-field probes :**  $E_i = \sqrt{\frac{V_i}{Norm_i ConvF}}$

**H-field probes :**  $H_i = \sqrt{V_i \frac{a_{i0} + a_{i1}f + a_{i2}f^2}{f}}$

with  $V_i =$  compensated signal of channel  $i$  ( $i = x, y, z$ )  
 $Norm_i =$  sensor sensitivity of channel  $i$  ( $i = x, y, z$ )  
 $\mu V/(V/m)^2$  for E-field Probes  
 $ConvF =$  sensitivity enhancement in solution  
 $a_{ij} =$  sensor sensitivity factors for H-field probes  
 $f =$  carrier frequency [GHz]  
 $E_i =$  electric field strength of channel  $i$  in V/m  
 $H_i =$  magnetic field strength of channel  $i$  in A/m

The RSS value of the field components gives the total field strength (Hermitian magnitude) :

$$E_{tot} = \sqrt{E_x^2 + E_y^2 + E_z^2}$$

The primary field data are used to calculate the derived field units.

$$SAR = E_{tot}^2 \cdot \frac{\sigma}{\rho \cdot 1000}$$

with  $SAR =$  local specific absorption rate in mW/g  
 $E_{tot} =$  total field strength in V/m  
 $\sigma =$  conductivity in [mho/m] or [Siemens/m]  
 $\rho =$  equivalent tissue density in g/cm<sup>3</sup>

\* Note that the density is set to 1, to account for actual head tissue density rather than the density of the tissue simulating liquid.

The power flow density is calculated assuming the excitation field to be a free space field.

$$P_{pwe} = \frac{E_{tot}^2}{3770} \quad \text{or} \quad P_{pwe} = H_{tot}^2 \cdot 37.7$$

with  $P_{pwe}$  = equivalent power density of a plane wave in mW/cm<sup>2</sup>  
 $E_{tot}$  = total electric field strength in V/m  
 $H_{tot}$  = total magnetic field strength in A/m

**5.7. Test Equipment List**

| Manufacture | Name of Equipment                  | Type/Model               | Serial Number   | Calibration   |               |
|-------------|------------------------------------|--------------------------|-----------------|---------------|---------------|
|             |                                    |                          |                 | Last Cal.     | Due Date      |
| SPEAG       | Dosimetric E-Filed Probe           | ET3DV6                   | 1788            | Aug. 29, 2003 | Aug. 29, 2004 |
| SPEAG       | 900MHz System Validation Kit       | D900V2                   | 190             | Jul. 17, 2003 | Jul. 17, 2005 |
| SPEAG       | 1800MHz System Validation Kit      | D1800V2                  | 2d076           | Jul. 16, 2003 | Jul. 16, 2005 |
| SPEAG       | 2450MHz System Validation Kit      | D2450V2                  | 736             | Aug. 26, 2003 | Aug. 26, 2004 |
| SPEAG       | Data Acquisition Electronics       | DAE3                     | 577             | Nov. 21, 2003 | Nov. 21, 2004 |
| SPEAG       | Device Holder                      | N/A                      | N/A             | NCR           | NCR           |
| SPEAG       | Phantom                            | QD 000 P40 C             | TP-1150         | NCR           | NCR           |
| SPEAG       | Robot                              | Staubli RX90BL           | F03/5W15A1/A/01 | NCR           | NCR           |
| SPEAG       | Software                           | DASY4<br>V4.1 Build 47   | N/A             | NCR           | NCR           |
| SPEAG       | Software                           | SEMCAD<br>V1.6 Build 116 | N/A             | NCR           | NCR           |
| SPEAG       | Measurement Server                 | SE UMS 001 BA            | 1021            | NCR           | NCR           |
| Agilent     | S-Parameter Network Analyzer (PNA) | E8358A                   | US40260131      | Oct 17, 2003  | Oct. 17, 2004 |
| Agilent     | Dielectric Probe Kit               | 85070D                   | US01440205      | NCR           | NCR           |
| R&S         | Power Meter                        | NRVS                     | 100444          | May 28, 2003  | May 28, 2004  |
| R&S         | Power Sensor                       | NRV-Z32                  | 100057          | May 28, 2003  | May 28, 2004  |
| R&S         | Signal Generator                   | SMR40                    | 100116          | Nov.06, 2003  | Nov.06, 2004  |
| Agilent     | Dual Directional Coupler           | 778D                     | 50422           | NCR           | NCR           |
| Agilent     | Power Amplifier                    | 8449B                    | 3008A01917      | Sep. 16, 2003 | Sep. 16, 2004 |

**Table 5.1 Test Equipment List**

**6. Tissue Simulating Liquids**

For the measurement of the field distribution inside the SAM phantom with DASY4, the phantom must be filled with around 25 liters of homogeneous body tissue simulating liquid. The liquid height from the bottom of the phantom body is 15.2 centimeters, which is shown in Fig. 6.1.

The following ingredients for tissue simulating liquid are used:

- **Water:** deionized water (pure H<sub>2</sub>O), resistivity  $\geq 16M\Omega$ - as basis for the liquid
- **Sugar:** refined sugar in crystals, as available in food shops – to reduce relative permittivity
- **Salt:** pure NaCl – to increase conductivity
- **Cellulose:** Hydroxyethyl-cellulose, medium viscosity (75-125 mPa.s, 2% in water, 20°C), CAS#54290-to increase viscosity and to keep sugar in solution.
- **Preservative:** Preventol D-7 Bayer AG, D-51368 Leverkusen, CAS#55965-84-9- to prevent the spread of bacteria and molds.
- **DGMBE:** Deithlenglycol-monobuthyl ether (DGMBE), Fluka Chemie GmbH, CAS#112-34-5 – to reduce relative permittivity.

Table 6.1 gives the recipes for one liter of tissue simulating liquid for frequency band 2450 MHz.

|                              |  |
|------------------------------|--|
| Ingredient                   | MSL-2450   |
| Water                        | 698.3 ml   |
| DGMBE                        | 301.7 ml   |
| Total amount                 | 1 liter (1.0 kg)   |
| Dielectric Parameters at 22° | f = 2450MHz<br>$\epsilon = 52.5\pm 5\%$ , $\sigma = 2.00\pm 5\%$ S/m |

**Table 6.1**

The dielectric parameters of the liquids were verified prior to the SAR evaluation using an Agilent 85070D Dielectric Probe Kit and an Agilent E8358A Network Analyzer.

Table 6.2 shows the measuring results for muscle simulating liquid in this 2450 MHz frequency band at the temperature = 21.5°C

| Frequency(MHz) | Permittivity ( $\epsilon$ ) | Conductivity ( $\sigma$ ) |
|----------------|-----------------------------|---------------------------|
| 2412           | 52.96                       | 1.959                     |
| 2437           | 52.73                       | 1.963                     |
| 2462           | 50.97                       | 1.955                     |

Table 6.2

The measuring data are consistent with  $\epsilon = 52.5 \pm 5\%$  and  $\sigma = 2.00 \pm 5\%$ .



Fig. 6.1

**7. Uncertainty Assessment**

The component of uncertainty may generally be categorized according to the methods used to evaluate them. The evaluation of uncertainty by the statistical analysis of a series of observations is termed a Type A evaluation of uncertainty. The evaluation of uncertainty by means other than the statistical analysis of a series of observation is termed a Type B evaluation of uncertainty. Each component of uncertainty, however evaluated, is represented by an estimated standard deviation, termed standard uncertainty, which is determined by the positive square root of the estimated variance.

A Type A evaluation of standard uncertainty may be based on any valid statistical method for treating data. This includes calculating the standard deviation of the mean of a series of independent observations; using the method of least squares to fit a curve to the data in order to estimate the parameter of the curve and their standard deviations; or carrying out an analysis of variance in order to identify and quantify random effects in certain kinds of measurement.

A type B evaluation of standard uncertainty is typically based on scientific judgment using all of the relevant information available. These may include previous measurement data, experience and knowledge of the behavior and properties of relevant materials and instruments, manufacture’s specification, data provided in calibration reports and uncertainties assigned to reference data taken from handbooks. Broadly speaking, the uncertainty is either obtained from an outdoor source or obtained from an assumed distribution, such as the normal distribution, rectangular or triangular distributions indicated in Table 7.1

| Uncertainty Distributions         | Normal             | Rectangular | Triangular | U-shape |
|-----------------------------------|--------------------|-------------|------------|---------|
| Multiplying factor <sup>(a)</sup> | 1/k <sup>(b)</sup> | 1/√3        | 1/√6       | 1/√2    |

(a) standard uncertainty is determined as the product of the multiplying factor and the estimated range of variations in the measured quantity  
 (b) *k* is the coverage factor

**Table 7.1**

The combined standard uncertainty of the measurement result represents the estimated standard deviation of the result. It is obtained by combining the individual standard uncertainties of both Type A and Type B evaluation using the usual “root-sum-squares” (RSS) methods of combining standard deviations by taking the positive square root of the estimated variances.

Expanded uncertainty is a measure of uncertainty that defines an interval about the measurement result within which the measured value is confidently believed to lie. It is obtained by multiplying the combined standard uncertainty by a coverage factor. Typically, the coverage factor ranges from 2 to 3. Using a coverage factor allows the true value of a measured quantity to be specified with a defined probability within the specified uncertainty range. For purpose of this document, a coverage factor two is used, which corresponds to confidence interval of about 95 %. The DASY4 uncertainty Budget is showed in Table 7.2.

| Error Description  | Uncertainty Value $\pm$ % | Probability Distribution | Divisor                | $C_i$<br>$1/g$  | Standard Unc. (1-g)          | $v_i$ or $V_{eff}$ |
|--|---------------------------|--------------------------|------------------------|-----------------|------------------------------|--------------------|
| <b>Measurement System</b>  |                           |                          |                        |                 |                              |                    |
| Probe Calibration  | $\pm 4.8$                 | Normal                   | 1                      | 1               | $\pm 4.8$                    | $\infty$           |
| Axial Isotropy   | $\pm 4.7$                 | Rectangular              | $\sqrt{3}$             | $(1-C_p)^{1/2}$ | $\pm 1.9$                    | $\infty$           |
| Hemispherical Isotropy   | $\pm 9.6$                 | Rectangular              | $\sqrt{3}$             | $(C_p)^{1/2}$   | $\pm 3.9$                    | $\infty$           |
| Boundary Effect  | $\pm 1.0$                 | Rectangular              | $\sqrt{3}$             | 1               | $\pm 0.6$                    | $\infty$           |
| Linearity  | $\pm 4.7$                 | Rectangular              | $\sqrt{3}$             | 1               | $\pm 2.7$                    | $\infty$           |
| System Detection Limit   | $\pm 1.0$                 | Rectangular              | $\sqrt{3}$             | 1               | $\pm 0.6$                    | $\infty$           |
| Readout Electronics  | $\pm 1.0$                 | Rectangular              | 1                      | 1               | $\pm 1.0$                    | $\infty$           |
| Response Time  | $\pm 0$                   | Normal                   | $\sqrt{3}$             | 1               | $\pm 0$                      | $\infty$           |
| Integration time   | $\pm 0$                   | Rectangular              | $\sqrt{3}$             | 1               | $\pm 0$                      | $\infty$           |
| RF Ambient Conditions  | $\pm 3.0$                 | Rectangular              | $\sqrt{3}$             | 1               | $\pm 1.7$                    | $\infty$           |
| Probe Positioner Mech. Tolerance                                   | $\pm 0.4$                 | Rectangular              | $\sqrt{3}$             | 1               | $\pm 0.2$                    | $\infty$           |
| Probe Positioning with respect to Phantom Shell                    | $\pm 2.9$                 | Rectangular              | $\sqrt{3}$             | 1               | $\pm 1.7$                    | $\infty$           |
| Extrapolation and Interpolation Algorithms for Max. SAR Evaluation | $\pm 1.0$                 | Rectangular              | $\sqrt{3}$             | 1               | $\pm 0.6$                    | $\infty$           |
| <b>Test sample Related</b>   |                           |                          |                        |                 |                              |                    |
| Test sample Positioning  | $\pm 2.9$                 | Normal                   | 1                      | 1               | $\pm 2.9$                    | 145                |
| Device Holder Uncertainty  | $\pm 3.6$                 | Normal                   | 1                      | 1               | $\pm 3.6$                    | 5                  |
| Output Power Variation-SAR drift measurement                       | $\pm 2.5$                 | Rectangular              | $\sqrt{3}$             | 1               | $\pm 1.4$                    | $\infty$           |
| <b>Phantom and Tissue parameters</b>                               |                           |                          |                        |                 |                              |                    |
| Phantom uncertainty(Including shape and thickness tolerances)      | $\pm 4.0$                 | Rectangular              | $\sqrt{3}$             | 1               | $\pm 2.3$                    | $\infty$           |
| Liquid Conductivity Target tolerance                               | $\pm 5.0$                 | Rectangular              | $\sqrt{3}$             | 0.64            | $\pm 1.8$                    | $\infty$           |
| Liquid Conductivity measurement uncertainty                        | $\pm 2.5$                 | Normal                   | 1                      | 0.64            | $\pm 1.6$                    | $\infty$           |
| Liquid Permittivity Target tolerance                               | $\pm 5.0$                 | Rectangular              | $\sqrt{3}$             | 0.6             | $\pm 1.7$                    | $\infty$           |
| Liquid Permittivity measurement uncertainty                        | $\pm 2.0$                 | Normal                   | 1                      | 0.6             | $\pm 1.2$                    | $\infty$           |
| Combined standard uncertainty                                      |                           |                          |                        |                 | $\pm 9.79$                   | 330                |
| <b>Coverage Factor for 95 %</b>                                    |                           | <b>K=2</b>               |                        |                 |                              |                    |
| <b>Expanded uncertainty (Coverage factor = 2)</b>                  |                           |                          | <b>Normal (k=2) 27</b> |                 | <b><math>\pm 19.6</math></b> |                    |

Table 7.2. Uncertainty Budget of DASY

## 8. SAR Measurement Evaluation

Each DASY system is equipped with one or more system validation kits. These units, together with the predefined measurement procedures within the DASY software, enable the user to conduct the system performance check and system validation. System validation kit includes a dipole, tripod holder to fix it underneath the flat phantom and a corresponding distance holder.

### 8.1 Purpose of System Performance check

The system performance check verifies that the system operates within its specifications. System and operator errors can be detected and corrected. It is recommended that the system performance check be performed prior to any usage of the system in order to guarantee reproducible results. The system performance check uses normal SAR measurements in a simplified setup with a well characterized source. This setup was selected to give a high sensitivity to all parameters that might fail or vary over time. The system check does not intend to replace the calibration of the components, but indicates situations where the system uncertainty is exceeded due to drift or failure.

### 8.2 System Setup

In the simplified setup for system evaluation, the DUT is replaced by a calibrated dipole and the power source is replaced by a continuous wave which comes from a signal generator with a fixed output power 100 mW (20 dBm) at frequency 2450 MHz. The calibrated dipole must be placed beneath the flat phantom section of the SAM twin phantom with the correct distance holder. The distance holder should touch the phantom surface with a light pressure at the reference marking and be oriented parallel to the long side of the phantom. The equipment setup is shown below:

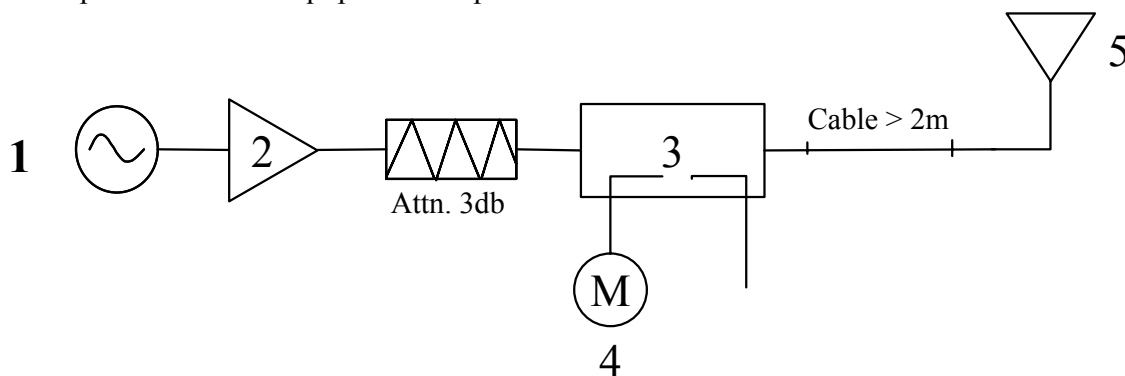


Fig. 8.1



1. Signal Generator
2. Amplifier
3. Directional Coupler
4. Power Meter
5. 2450 MHz Dipole

The output power on dipole port must be calibrated to 100 mW (20 dBm) before dipole is connected.

**8.3 Validation Results**

Comparing to the original SAR value provided by Speag, the validation data should within its specification of 10 %. Table 8.1 shows the target SAR and measured SAR after normalized to 1W input power.

|           | <b>Target (W/kg)</b> | <b>Measurement data (W/kg)</b> | <b>Variation</b> |
|-----------|----------------------|--------------------------------|------------------|
| SAR (1g)  | 56                   | 51.4                           | 8.21%            |
| SAR (10g) | 25.8                 | 23.5                           | 8.91%            |

**Table 8.1**

The table above indicates the system performance check can meet the variation criterion.

**9. Description for DUT Testing Position**

This DUT was tested in 3 different positions. The first one is “NB Bottom Touch” in Fig. 9.1. In this position, the bottom of notebook (laptop) is touched with that phantom.



**Fig. 9.1**

The second position is “NB Bottom with 1.5 cm Gap” in Fig. 9.2. In this position, the bottom face of the laptop has 1.5 cm gap with the flat phantom.



**Fig. 9.2**

The third one is “NB Side Touch” in Fig. 9.3. In this position, the antenna side of the laptop is parallel and touched with the flat phantom.



**Fig. 9.3**

## **10. Measurement Procedures**

The measurement procedures are as follows:

- Plugging DUT into the notebook
- Using engineering software to transmit RF power continuously (continuous Tx) in the low channel
- Placing the DUT in the positions described in the last section
- Setting scan area, grid size and other setting on the DASY4 software
- Taking data for the low channel
- Repeat the previous steps for the middle and high channels.

According to the IEEE P1528 draft standard, the recommended procedure for assessing the peak spatial-average SAR value consists of the following steps:

- Power reference measurement
- Area scan
- Zoom scan
- Power reference measurement

### **10.1 Spatial Peak SAR Evaluation**

The procedure for spatial peak SAR evaluation has been implemented according to the IEEE1528-200X standard. It can be conducted for 1g and 10g, as well as for user-specific masses. The DASY4 software includes all numerical procedures necessary to evaluate the spatial peak SAR value.

Base on the Draft: SCC-34, SC-2, WG-2-Computational Dosimetry, IEEE P1529/D0.0 (Draft Recommended Practice for Determining the Spatial-Peak Specific Absorption Rate (SAR) Associated with the Use of Wireless Handset-Computational techniques), a new algorithm has been implemented. The spatial-peak SAR can be computed over any required mass.

The base for the evaluation is a "cube" measurement. The measured volume must include the 1g and 10g cubes with the highest averaged SAR values. For that purpose, the center of the measured volume is aligned to the interpolated peak SAR value of a previously performed area scan.

The entire evaluation of the spatial peak values is performed within the postprocessing engine (SEMCAD). The system always gives the maximum values for the 1g and 10g cubes. The algorithm to find the cube with highest averaged SAR is divided into the following stages:

- extraction of the measured data (grid and values) from the Zoom Scan
- calculation of the SAR value at every measurement point based on all stored data (A/D values and measurement parameters)
- generation of a high-resolution mesh within the measured volume

- interpolation of all measured values from the measurement grid to the high-resolution grid
- extrapolation of the entire 3-D field distribution to the phantom surface over the distance from sensor to surface
- calculation of the averaged SAR within masses of 1g and 10g

### **10.2 Scan Procedures**

First **Area Scan** is used to locate the approximate location(s) of the local peak SAR value(s). The measurement grid within an **Area Scan** is defined by the grid extent, grid step size and grid offset. Next, in order to determine the EM field distribution in a three-dimensional spatial extension, **Zoom Scan** is required. The **Zoom Scan** measures 7x7x7 points with step size 8, 8 and 5 mm. The **Zoom Scan** is performed around the highest E-field value to determine the averaged SAR-distribution over 1 g.

### **10.3 SAR Averaged Methods**

In DASY4, the interpolation and extrapolation are both based on the modified Quadratic Shepard's method. The interpolation scheme combines a least-square fitted function method and a weighted average method which are the two basic types of computational interpolation and approximation. Extrapolation routines are used to obtain SAR values between the lowest measurement points and the inner phantom surface. The extrapolation distance is determined by the surface detection distance and the probe sensor offset. The uncertainty increases with the extrapolation distance. To keep the uncertainty within 1% for the 1 g and 10 g cubes, the extrapolation distance should not be larger than 5 mm.

**11. SAR Test Results**

**11.1 NB BTM Touch**

| Mode    | Chan. | Freq (MHz) | Modulation type | Conducted Power (dBm) | Power Drift (dB) | Measured 1g SAR (W/kg) | Limits (W/Kg) | Results |
|---------|-------|------------|-----------------|-----------------------|------------------|------------------------|---------------|---------|
| 802.11b | 1     | 2412(Low)  | CCK             | 15.75                 | -0.2             | 0.42                   | 1.6           | Pass    |
|         | 6     | 2437(Mid)  | CCK             | 14.53                 | -0.09            | 0.355                  | 1.6           | Pass    |
|         | 11    | 2462(High) | CCK             | 15.29                 | 0.006            | 0.355                  | 1.6           | Pass    |

**11.2 NB Bottom with 1.5 cm Gap**

| Mode    | Chan. | Freq (MHz) | Modulation type | Conducted Power (dBm) | Power Drift (dB) | Measured 1g SAR (W/kg) | Limits (W/Kg) | Results |
|---------|-------|------------|-----------------|-----------------------|------------------|------------------------|---------------|---------|
| 802.11b | 1     | 2412(Low)  | CCK             | 15.75                 | -0.01            | 0.0785                 | 1.6           | Pass    |
|         | 6     | 2437(Mid)  | CCK             | 14.53                 | -0.05            | 0.0606                 | 1.6           | Pass    |
|         | 11    | 2462(High) | CCK             | 15.29                 | -0.03            | 0.0684                 | 1.6           | Pass    |

**11.3 NB Side Touch**

| Mode    | Chan. | Freq (MHz) | Modulation type | Conducted Power (dBm) | Power Drift (dB) | Measured 1g SAR (W/kg) | Limits (W/Kg) | Results |
|---------|-------|------------|-----------------|-----------------------|------------------|------------------------|---------------|---------|
| 802.11b | 1     | 2412(Low)  | CCK             | 15.75                 | 0.006            | 1.37                   | 1.6           | Pass    |
|         | 6     | 2437(Mid)  | CCK             | 14.53                 | -0.001           | 1.17                   | 1.6           | Pass    |
|         | 11    | 2462(High) | CCK             | 15.29                 | -0.008           | 1.4                    | 1.6           | Pass    |

***12. References***

- [1] FCC 47 CFR Part 2 “Frequency Allocations and Radio Treaty Matters; General Rules and Regulations”
- [2] IEEE Std. 1528-200X, Draft CD 1.1 “ Recommended Practice for Determining the Spatial-Peak Specific Absorption Rate (SAR) in the Human Body Due to Wireless Communications Devices: Experimental Techniques”, December 2002
- [3] Supplement C (Edition 01-10) to OET Bulletin 65 (Edition 97-01), “Additional Information for Evaluating Compliance of Mobile and Portable Devices with FCC Limits for Human Exposure to RF Emissions”, June 2001
- [4] IEEE Std. C95.3, “IEEE Recommended Practice for the Measurement of Potentially Hazardous Electromagnetic Fields-RF and Microwave”, 1991
- [5] IEEE Std. C95.1, “IEEE Standard for Safety Levels with Respect to Human Exposure to Radio Frequency Electromagnetic Fields, 3 kHz to 300 GHz”, 1999
- [6] Robert J. Renka, “Multivariate Interpolation Of Large Sets Of Scattered Data”, University of North Texas ACM Transactions on Mathematical Software, vol. 14, no. 2, June 1988, pp. 139-148
- [7] DAYS4 System Handbook

**Appendix A - System Performance Check Data**

Date/Time: 01/07/04 09:03:18

Test Laboratory: SPORTON

**2.4GHz Diploe System Calbration**

**DUT: Dipole 2450 MHz; Type: D2450V2; Serial: D2450V2 - SN:736**  
**Program Name: System Performance Check**

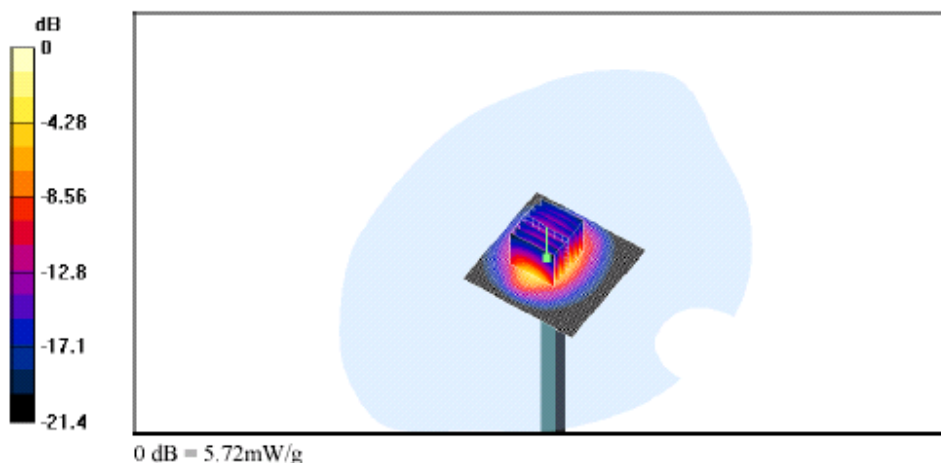
Communication System: CW; Frequency: 2450 MHz;Duty Cycle: 1:1  
 Medium: M2450 ( $\sigma = 1.90015$  mho/m,  $\epsilon_r = 52.2121$ ,  $\rho = 1000$  kg/m<sup>3</sup>)  
 Phantom section: Flat Section; Ambient Temp-21~23C; Liquid Temp-21.5C; Liquid height-15.2cm

**DASY4 Configuration:**

- Probe: ET3DV6 - SN1788; ConvF(4.5, 4.5, 4.5); Calibrated: 8/29/2003
- Sensor-Surface: 4mm (Mechanical And Optical Surface Detection)
- Electronics: DAE3 Sn577; Calibrated: 11/21/2003
- Phantom: SAM 12; Type: QD 000 P40 C; Serial: TP-1150
- Measurement SW: DASY4, V4.1 Build 47; Postprocessing SW: SEMCAD, V1.6 Build 116

**Pin - 100mW; d - 10mm/Area Scan (51x51x1):** Measurement grid: dx=15mm, dy=15mm  
 Reference Value = 55.5 V/m  
 Power Drift = -0.04 dB  
 Maximum value of SAR = 6 mW/g

**Pin - 100mW; d - 10mm/Zoom Scan (7x7x7)/Cube 0:** Measurement grid: dx=5mm, dy=5mm, dz=5mm  
 Peak SAR (extrapolated) = 11.1 W/kg  
 SAR(1 g) = 5.14 mW/g; SAR(10 g) = 2.35 mW/g  
 Reference Value = 55.5 V/m  
 Power Drift = -0.04 dB  
 Maximum value of SAR = 5.72 mW/g





**Appendix B - SAR Measurement Data**

Date/Time: 01/07/04 10:29:14

Test Laboratory: SPORTON

**NB BTM TOUCH CH 01**

**DUT: CastleNET; Type: WM1170; Serial: 00-30-54-AA-A8-4B**

Communication System: 802.11b ; Frequency: 2412 MHz;Duty Cycle: 1:1

Medium: MSL2450 ( $\sigma = 1.95914$  mho/m,  $\epsilon_r = 52.9612$ ,  $\rho = 1000$  kg/m<sup>3</sup>)

Phantom section: Flat Section; Ambient Temp=21~23C; Liquid Temp=21.5C; Liquid height=15.2cm

DASY4 Configuration:

- Probe: ET3DV6 - SN1788; ConvF(4.5, 4.5, 4.5); Calibrated: 8/29/2003
- Sensor-Surface: 4mm (Mechanical And Optical Surface Detection)
- Electronics: DAE3 Sn577; Calibrated: 11/21/2003
- Phantom: SAM 12; Type: QD 000 P40 C; Serial: TP-1150
- Measurement SW: DASY4, V4.1 Build 47; Postprocessing SW: SEMCAD, V1.6 Build 116

**Channel 1 2412MHz/Area Scan (61x61x1):** Measurement grid: dx=15mm, dy=15mm

Reference Value = 12.6 V/m

Power Drift = -0.2 dB

Maximum value of SAR = 0.457 mW/g

**Channel 1 2412MHz/Zoom Scan (5x5x7)/Cube 0:** Measurement grid: dx=8mm, dy=8mm, dz=5mm

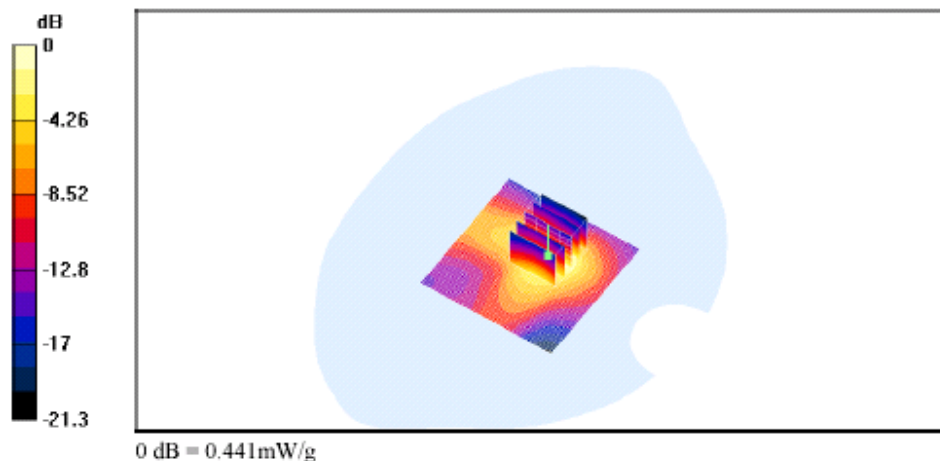
Peak SAR (extrapolated) = 0.87 W/kg

SAR(1 g) = 0.42 mW/g; SAR(10 g) = 0.215 mW/g

Reference Value = 12.6 V/m

Power Drift = -0.2 dB

Maximum value of SAR = 0.441 mW/g



Date/Time: 01/07/04 11:55:02

Test Laboratory: SPORTON

**NB BTM with 1.5cm GAP CH 01**

**DUT: CastleNET; Type: WM1170; Serial: 00-30-54-AA-A8-4B**

Communication System: 802.11b ; Frequency: 2412 MHz;Duty Cycle: 1:1

Medium: MSL2450 ( $\sigma = 1.95914$  mho/m,  $\epsilon_r = 52.9612$ ,  $\rho = 1000$  kg/m<sup>3</sup>)

Phantom section: Flat Section; Ambient Temp=21~23C; Liquid Temp=21.5C; Liquid height=15.2cm

DASY4 Configuration:

- Probe: ET3DV6 - SN1788; ConvF(4.5, 4.5, 4.5); Calibrated: 8/29/2003
- Sensor-Surface: 4mm (Mechanical And Optical Surface Detection)
- Electronics: DAE3 Sn577; Calibrated: 11/21/2003
- Phantom: SAM 12; Type: QD 000 P40 C; Serial: TP-1150
- Measurement SW: DASY4, V4.1 Build 47; Postprocessing SW: SEMCAD, V1.6 Build 116

**Channel 1 2412MHz/Area Scan (61x61x1):** Measurement grid: dx=15mm, dy=15mm

Reference Value = 6.64 V/m

Power Drift = -0.01 dB

Maximum value of SAR = 0.084 mW/g

**Channel 1 2412MHz/Zoom Scan (5x5x7)/Cube 0:** Measurement grid: dx=8mm, dy=8mm, dz=5mm

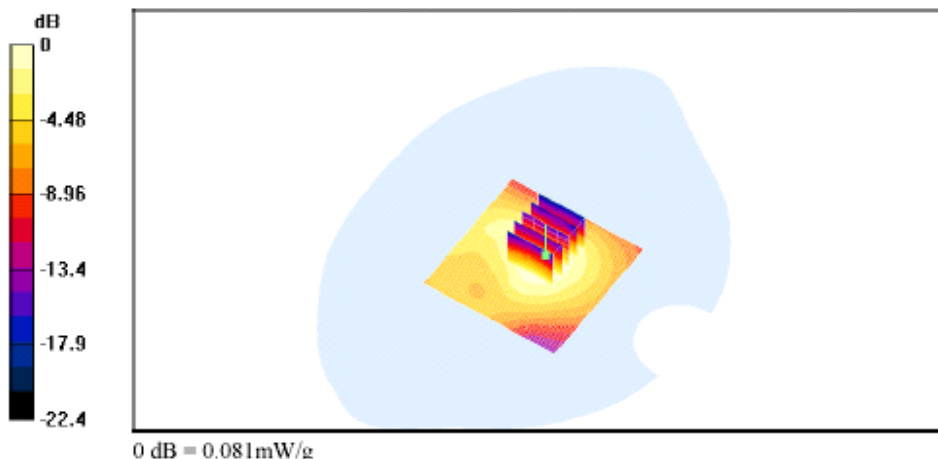
Peak SAR (extrapolated) = 0.151 W/kg

SAR(1 g) = 0.0785 mW/g; SAR(10 g) = 0.0448 mW/g

Reference Value = 6.64 V/m

Power Drift = -0.01 dB

Maximum value of SAR = 0.081 mW/g



Date/Time: 01/07/04 12:28:48

Test Laboratory: SPORTON

**NB SIDE TOUCH CH 01**

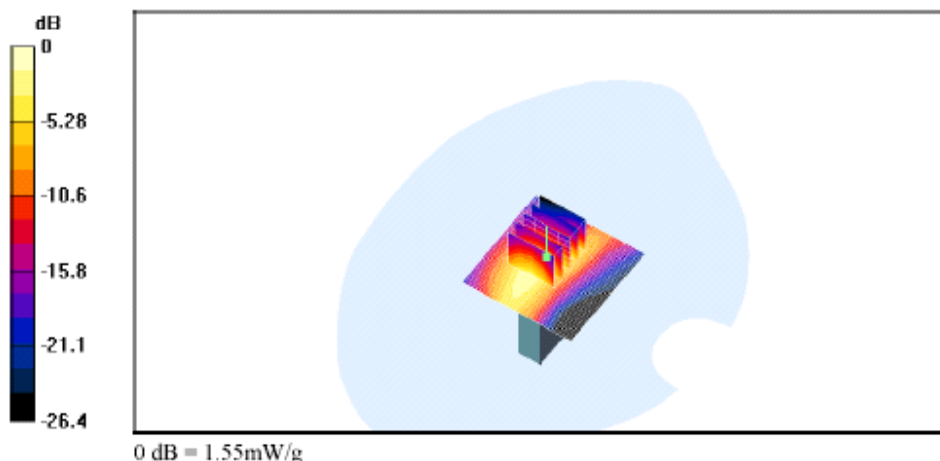
**DUT: CastleNET; Type: WM1170; Serial: 00-30-54-AA-A8-4B**

Communication System: 802.11b ; Frequency: 2412 MHz;Duty Cycle: 1:1  
Medium: MSL2450 ( $\sigma = 1.95914$  mho/m,  $\epsilon_r = 52.9612$ ,  $\rho = 1000$  kg/m<sup>3</sup>)  
Phantom section: Flat Section; Ambient Temp=21~23C; Liquid Temp=21.5C; Liquid height=15.2cm

- DASY4 Configuration:
- Probe: ET3DV6 - SN1788; ConvF(4.5, 4.5, 4.5); Calibrated: 8/29/2003
  - Sensor-Surface: 4mm (Mechanical And Optical Surface Detection)
  - Electronics: DAE3 Sn577; Calibrated: 11/21/2003
  - Phantom: SAM 12; Type: QD 000 P40 C; Serial: TP-1150
  - Measurement SW: DASY4, V4.1 Build 47; Postprocessing SW: SEMCAD, V1.6 Build 116

**Channel 1 2412MHz/Area Scan (51x51x1):** Measurement grid: dx=15mm, dy=15mm  
Reference Value = 22 V/m  
Power Drift = 0.006 dB  
Maximum value of SAR = 1.68 mW/g

**Channel 1 2412MHz/Zoom Scan (5x5x7)/Cube 0:** Measurement grid: dx=8mm, dy=8mm, dz=5mm  
Peak SAR (extrapolated) = 3.46 W/kg  
SAR(1 g) = 1.37 mW/g; SAR(10 g) = 0.588 mW/g  
Reference Value = 22 V/m  
Power Drift = 0.006 dB  
Maximum value of SAR = 1.55 mW/g



Date/Time: 01/07/04 12:41:46

Test Laboratory: SPORTON

**NB SIDE TOUCH CH 06**

**DUT: CastleNET; Type: WM1170; Serial: 00-30-54-AA-A8-4B**

Communication System: 802.11b ; Frequency: 2437 MHz;Duty Cycle: 1:1

Medium: MSL2450 ( $\sigma = 1.96282$  mho/m,  $\epsilon_r = 52.725$ ,  $\rho = 1000$  kg/m<sup>3</sup>)

Phantom section: Flat Section; Ambient Temp=21~23C; Liquid Temp=21.5C; Liquid height=15.2cm

DASY4 Configuration:

- Probe: ET3DV6 - SN1788; ConvF(4.5, 4.5, 4.5); Calibrated: 8/29/2003
- Sensor-Surface: 4mm (Mechanical And Optical Surface Detection)
- Electronics: DAE3 Sn577; Calibrated: 11/21/2003
- Phantom: SAM 12; Type: QD 000 P40 C; Serial: TP-1150
- Measurement SW: DASY4, V4.1 Build 47; Postprocessing SW: SEMCAD, V1.6 Build 116

**Channel 6 2437MHz/Area Scan (51x51x1):** Measurement grid: dx=15mm, dy=15mm

Reference Value = 20.6 V/m

Power Drift = -0.001 dB

Maximum value of SAR = 1.43 mW/g

**Channel 6 2437MHz/Zoom Scan (5x5x7)/Cube 0:** Measurement grid: dx=8mm, dy=8mm, dz=5mm

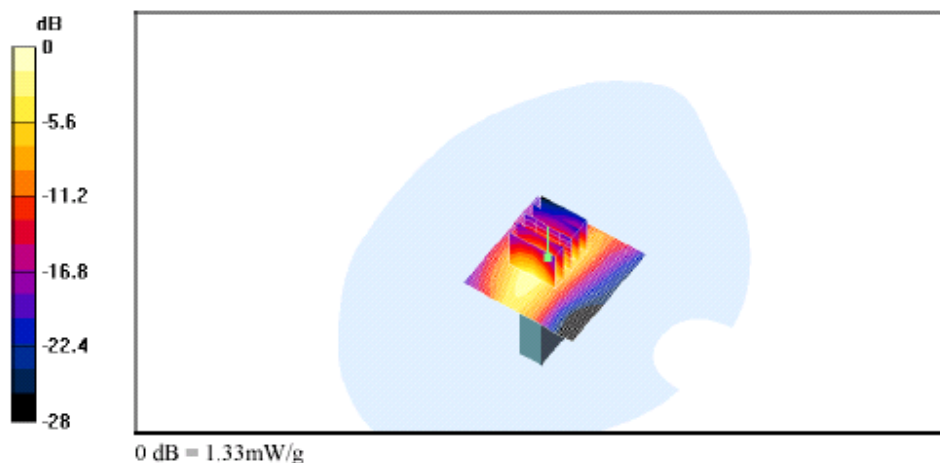
Peak SAR (extrapolated) = 2.91 W/kg

SAR(1 g) = 1.17 mW/g; SAR(10 g) = 0.5 mW/g

Reference Value = 20.6 V/m

Power Drift = -0.001 dB

Maximum value of SAR = 1.33 mW/g



Date/Time: 01/07/04 13:29:12

Test Laboratory: SPORTON

**NB SIDE TOUCH CH 11**

**DUT: CastleNET; Type: WM1170; Serial: 00-30-54-AA-A8-4B**

Communication System: 802.11b ; Frequency: 2462 MHz;Duty Cycle: 1:1

Medium: MSL2450 ( $\sigma = 1.95504$  mho/m,  $\epsilon_r = 50.9658$ ,  $\rho = 1000$  kg/m<sup>3</sup>)

Phantom section: Flat Section;Ambient Temp=21~23C; Liquid Temp=21.5C; Liquid height=15.2cm

DASY4 Configuration:

- Probe: ET3DV6 - SN1788; ConvF(4.5, 4.5, 4.5); Calibrated: 8/29/2003

- Sensor-Surface: 4mm (Mechanical And Optical Surface Detection)

- Electronics: DAE3 Sn577; Calibrated: 11/21/2003

- Phantom: SAM 12; Type: QD 000 P40 C; Serial: TP-1150

- Measurement SW: DASY4, V4.1 Build 47; Postprocessing SW: SEMCAD, V1.6 Build 116

**Channel 11 2462MHz/Area Scan (51x51x1):** Measurement grid: dx=15mm, dy=15mm

Reference Value = 23.3 V/m

Power Drift = -0.008 dB

Maximum value of SAR = 1.71 mW/g

**Channel 11 2462MHz/Zoom Scan (5x5x7)/Cube 0:** Measurement grid: dx=8mm, dy=8mm, dz=5mm

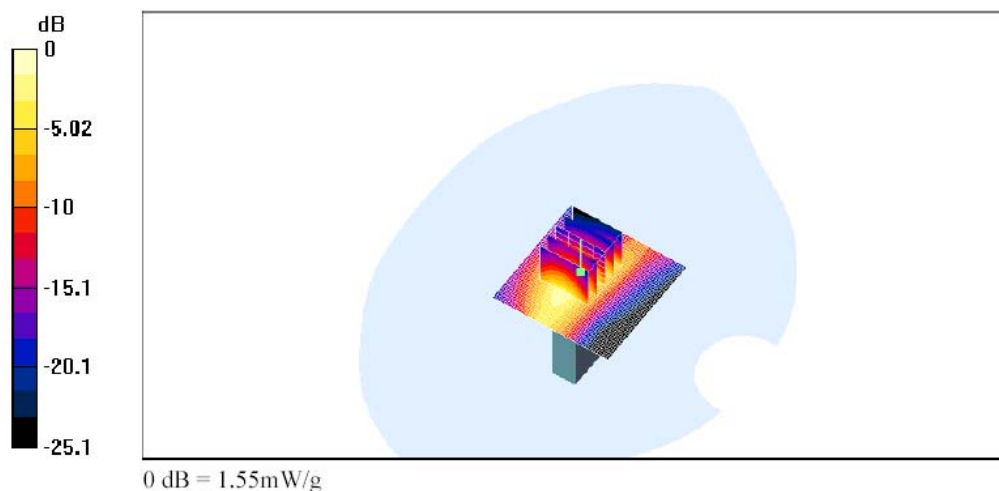
Peak SAR (extrapolated) = 3.57 W/kg

SAR(1 g) = 1.4 mW/g; SAR(10 g) = 0.596 mW/g

Reference Value = 23.3 V/m

Power Drift = -0.008 dB

Maximum value of SAR = 1.55 mW/g



Date/Time: 01/07/04 13:29:12

Test Laboratory: SPORTON

**NB SIDE TOUCH CH 11**

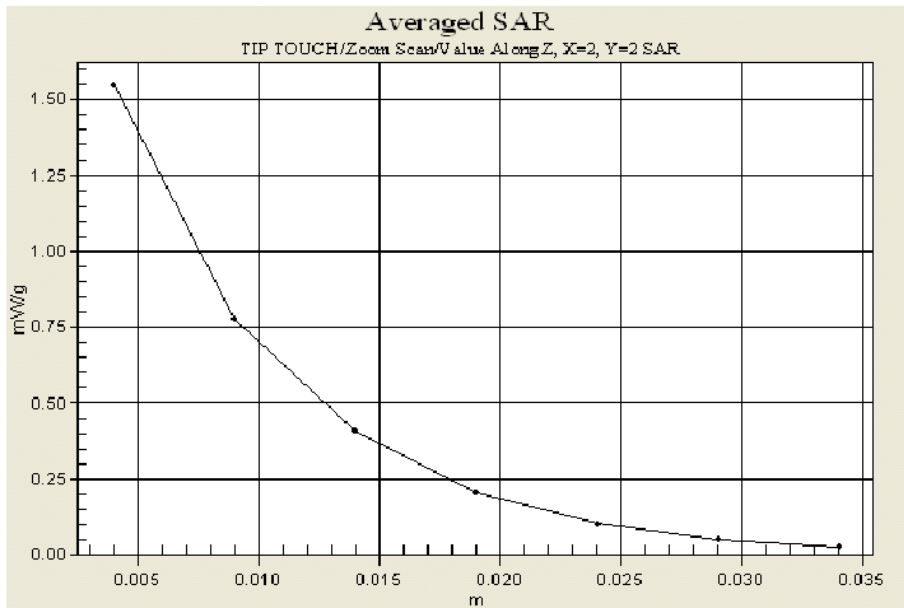
**DUT: CastleNET; Type: WM1170; Serial: 00-30-54-AA-A8-4B**

Communication System: 802.11b ; Frequency: 2462 MHz;Duty Cycle: 1:1  
Medium: MSL2450 ( $\sigma = 1.95504$  mho/m,  $\epsilon_r = 50.9658$ ,  $\rho = 1000$  kg/m<sup>3</sup>)  
Phantom section: Flat Section;Ambient Temp=21~23C; Liquid Temp=21.5C; Liquid height=15.2cm

- DASY4 Configuration:
- Probe: ET3DV6 - SN1788; ConvF(4.5, 4.5, 4.5); Calibrated: 8/29/2003
  - Sensor-Surface: 4mm (Mechanical And Optical Surface Detection)
  - Electronics: DAE3 Sn577; Calibrated: 11/21/2003
  - Phantom: SAM 12; Type: QD 000 P40 C; Serial: TP-1150
  - Measurement SW: DASY4, V4.1 Build 47; Postprocessing SW: SEMCAD, V1.6 Build 116

**Channel 11 2462MHz/Area Scan (51x51x1):** Measurement grid: dx=15mm, dy=15mm  
Reference Value = 23.3 V/m  
Power Drift = -0.008 dB  
Maximum value of SAR = 1.71 mW/g



**Channel 11 2462MHz/Zoom Scan (5x5x7)/Cube 0:** Measurement grid: dx=8mm, dy=8mm, dz=5mm  
Peak SAR (extrapolated) = 3.57 W/kg  
SAR(1 g) = 1.4 mW/g; SAR(10 g) = 0.596 mW/g  
Reference Value = 23.3 V/m  
Power Drift = -0.008 dB  
Maximum value of SAR = 1.55 mW/g



Appendix C. Calibration Data

Calibration Laboratory of  
 Schmid & Partner  
 Engineering AG  
 Zeughausstrasse 43, 8004 Zurich, Switzerland

Client **Auden > Sporton Int. Inc.**

| CALIBRATION CERTIFICATE  |  |   |  |
|--|--|---|--|
| Object(s)  | D2450V2 - SN:736   |   |  |
| Calibration procedure(s)   | QA CAL-05.v2<br>Calibration procedure for dipole validation kits |   |  |
| Calibration date:  | August 27, 2003  |   |  |
| Condition of the calibrated item   | In Tolerance (according to the specific calibration document)    |   |  |
| This calibration statement documents traceability of M&TE used in the calibration procedures and conformity of the procedures with the ISO/IEC 17025 international standard.   |  |   |  |
| All calibrations have been conducted in the closed laboratory facility: environment temperature 22 +/- 2 degrees Celsius and humidity < 75%.   |  |   |  |
| Calibration Equipment used (M&TE critical for calibration)   |  |   |  |
| Model Type   | ID #   | Cal Date (Calibrated by, Certificate No.) | Scheduled Calibration  |
| RF generator R&S SML-03  | 100696   | 27-Mar-2002 (R&S, No. 20-92389)           | In house check: Mar-05   |
| Power sensor HP 8481A  | MY41092317   | 18-Oct-02 (Agilent, No. 20021018)         | Oct-04   |
| Power sensor HP 8481A  | US37292783   | 30-Oct-02 (METAS, No. 252-0236)           | Oct-03   |
| Power meter EPM E442   | GB37480704   | 30-Oct-02 (METAS, No. 252-0236)           | Oct-03   |
| Network Analyzer HP 8753E  | US37390585   | 18-Oct-01 (Agilent, No. 24BR1033101)      | In house check: Oct 03   |
| Calibrated by:   | Name<br>Judith Mueller   | Function<br>Technician                    | Signature<br> |
| Approved by:   | Name<br>Katja Pokovic  | Function<br>Laboratory Director           | Signature<br> |
| Date issued: August 28, 2003   |  |   |  |
| This calibration certificate is issued as an intermediate solution until the accreditation process (based on ISO/IEC 17025 International Standard) for Calibration Laboratory of Schmid & Partner Engineering AG is completed. |  |   |  |

---

Schmid & Partner Engineering AG

**s p e a g**

Zeughausstrasse 43, 8004 Zurich, Switzerland  
Phone +41 1 245 9700, Fax +41 1 245 9779  
info@speag.com, http://www.speag.com

# DASY

## Dipole Validation Kit

Type: D2450V2

Serial: 736

Manufactured: August 26, 2003

Calibrated: August 27, 2003



**1. Measurement Conditions**

The measurements were performed in the flat section of the SAM twin phantom filled with **head simulating solution** of the following electrical parameters at 2450 MHz:

|                        |                   |      |
|------------------------|-------------------|------|
| Relative Dielectricity | <b>38.2</b>       | ± 5% |
| Conductivity           | <b>1.89 mho/m</b> | ± 5% |

The DASY4 System with a dosimetric E-field probe ES3DV2 (SN:3013, Conversion factor 4.8 at 2450 MHz) was used for the measurements.

The dipole was mounted on the small tripod so that the dipole feedpoint was positioned below the center marking of the flat phantom section and the dipole was oriented parallel to the body axis (the long side of the phantom). The standard measuring distance was 10mm from dipole center to the solution surface. Lossless spacer was used during measurements for accurate distance positioning.

The coarse grid with a grid spacing of 15mm was aligned with the dipole. The 7x7x7 fine cube was chosen for cube integration.

The dipole input power (forward power) was 250mW ± 3 %. The results are normalized to 1W input power.

**2. SAR Measurement with DASY4 System**

Standard SAR-measurements were performed according to the measurement conditions described in section 1. The results (see figure supplied) have been normalized to a dipole input power of 1W (forward power). The resulting averaged SAR-values measured with the dosimetric probe ES3DV2 SN:3013 and applying the advanced extrapolation are:

|  |   |
|--|---|
| averaged over 1 cm <sup>3</sup> (1 g) of tissue:   | <b>55.6 mW/g ± 16.8 % (k=2)<sup>1</sup></b> |
| averaged over 10 cm <sup>3</sup> (10 g) of tissue: | <b>25.0 mW/g ± 16.2 % (k=2)<sup>1</sup></b> |

---

<sup>1</sup> validation uncertainty

### 3. Dipole Impedance and Return Loss

The impedance was measured at the SMA-connector with a network analyzer and numerically transformed to the dipole feedpoint. The transformation parameters from the SMA-connector to the dipole feedpoint are:

|                      |                 |                                       |
|----------------------|-----------------|---------------------------------------|
| Electrical delay:    | <b>1.158 ns</b> | (one direction)                       |
| Transmission factor: | <b>0.983</b>    | (voltage transmission, one direction) |

The dipole was positioned at the flat phantom sections according to section 1 and the distance spacer was in place during impedance measurements.

|                                  |   |
|----------------------------------|---|
| Feedpoint impedance at 2450 MHz: | $\text{Re}\{Z\} = \mathbf{52.5 \Omega}$ |
|                                  | $\text{Im}\{Z\} = \mathbf{3.6 \Omega}$  |
| Return Loss at 2450 MHz          | <b>-27.5 dB</b>                         |

### 4. Measurement Conditions

The measurements were performed in the flat section of the SAM twin phantom filled with **body simulating solution** of the following electrical parameters at 2450 MHz:

|                        |                   |           |
|------------------------|-------------------|-----------|
| Relative Dielectricity | <b>50.8</b>       | $\pm 5\%$ |
| Conductivity           | <b>2.03 mho/m</b> | $\pm 5\%$ |

The DASY4 System with a dosimetric E-field probe ES3DV2 (SN:3013, Conversion factor 4.2 at 2450 MHz) was used for the measurements.

The dipole was mounted on the small tripod so that the dipole feedpoint was positioned below the center marking of the flat phantom section and the dipole was oriented parallel to the body axis (the long side of the phantom). The standard measuring distance was 10mm from dipole center to the solution surface. Lossless spacer was used during measurements for accurate distance positioning.

The coarse grid with a grid spacing of 15mm was aligned with the dipole. The 7x7x7 fine cube was chosen for cube integration.

The dipole input power (forward power) was 250mW  $\pm 3\%$ . The results are normalized to 1W input power.

### 5. SAR Measurement with DASY4 System

Standard SAR-measurements were performed according to the measurement conditions described in section 4. The results (see figure supplied) have been normalized to a dipole input power of 1W (forward power). The resulting averaged SAR-values measured with the dosimetric probe ES3DV2 SN:3013 and applying the advanced extrapolation are:

averaged over 1 cm<sup>3</sup> (1 g) of tissue: **56.0 mW/g ± 16.8 % (k=2)<sup>2</sup>**

averaged over 10 cm<sup>3</sup> (10 g) of tissue: **25.8 mW/g ± 16.2 % (k=2)<sup>2</sup>**

### 6. Dipole Impedance and Return Loss

The dipole was positioned at the flat phantom sections according to section 4 and the distance spacer was in place during impedance measurements.

Feedpoint impedance at 2450 MHz: **Re{Z} = 48.7 Ω**

**Im {Z} = 4.8 Ω**

Return Loss at 2450 MHz **-25.8 dB**

### 7. Handling

Do not apply excessive force to the dipole arms, because they might bend. Bending of the dipole arms stresses the soldered connections near the feedpoint leading to a damage of the dipole.

### 8. Design

The dipole is made of standard semirigid coaxial cable. The center conductor of the feeding line is directly connected to the second arm of the dipole. The antenna is therefore short-circuited for DC-signals.

Small end caps have been added to the dipole arms in order to improve matching when loaded according to the position as explained in Sections 1 and 4. The SAR data are not affected by this change. The overall dipole length is still according to the Standard.

### 9. Power Test

After long term use with 40W radiated power, only a slight warming of the dipole near the feedpoint can be measured.

---

<sup>2</sup> validation uncertainty

Test Laboratory: SPEAG, Zurich, Switzerland  
 File Name: SN736\_SN3013\_M2450\_270803.da4

**DUT: Dipole 2450 MHz; Type: D2450V2; Serial: D2450V2 - SN736**  
**Program: Dipole Calibration**

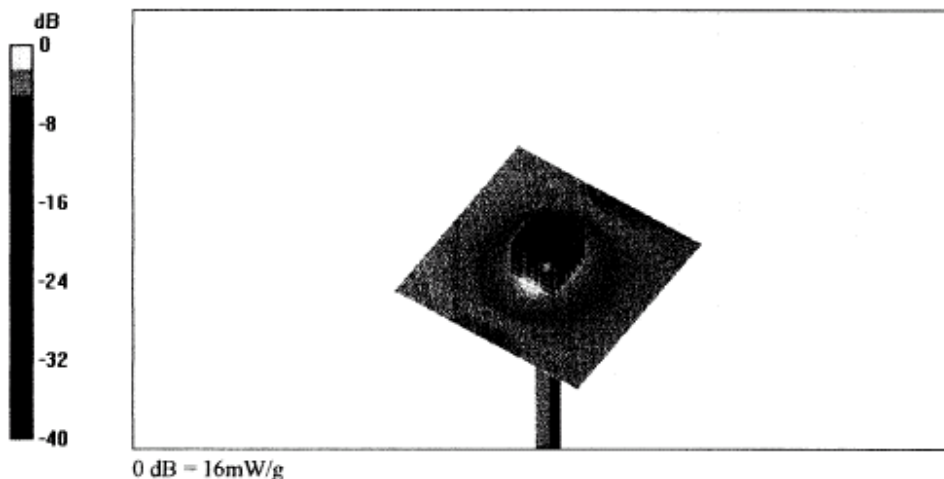
Communication System: CW-2450; Frequency: 2450 MHz; Duty Cycle: 1:1  
 Medium: Muscle 2450 MHz ( $\sigma = 2.03$  mho/m,  $\epsilon_r = 50.75$ ,  $\rho = 1000$  kg/m<sup>3</sup>)  
 Phantom section: Flat Section  
 Measurement Standard: DASY4 (High Precision Assessment)

DASY4 Configuration:

- Probe: ES3DV2 - SN3013; ConvF(4.2, 4.2, 4.2); Calibrated: 1/19/2003
- Sensor-Surface: 4mm (Mechanical Surface Detection)
- Electronics: DAE3 - SN411; Calibrated: 1/16/2003
- Phantom: SAM with CRP - TP1006; Type: SAM 4.0; Serial: TP:1006
- Measurement SW: DASY4, V4.1 Build 47; Postprocessing SW: SEMCAD, V1.6 Build 115

**Pin = 250 mW; d = 10 mm/Area Scan (81x81x1):** Measurement grid: dx=15mm, dy=15mm  
 Reference Value = 91 V/m  
 Power Drift = -0.02 dB  
 Maximum value of SAR = 15.7 mW/g

**Pin = 250 mW; d = 10 mm/Zoom Scan (7x7x7)/Cube 0:** Measurement grid: dx=5mm, dy=5mm, dz=5mm  
 Peak SAR (extrapolated) = 27.8 W/kg  
 SAR(1 g) = 14 mW/g; SAR(10 g) = 6.46 mW/g  
 Reference Value = 91 V/m  
 Power Drift = -0.02 dB  
 Maximum value of SAR = 16 mW/g



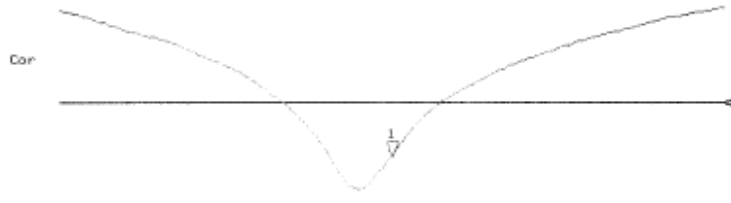
736  
Barly

27 Aug 2003 13:28:39  
CH1 S11 1 0 FS 1: 48.703 u 4.8066 u 312.25 pH 2 450.000 000 MHz

Del  
Cor  
Avg  
16  
f



CH2 S11 L06 3 dB/RET -20 dB 1: -25.793 dB 2 450.000 000 MHz



CENTER 2 450.000 000 MHz SPAN 400.000 000 MHz

Test Laboratory: SPEAG, Zurich, Switzerland  
File Name: SN736\_SN3013\_HSL2450\_270803.dsf

**DUT: Dipole 2450 MHz; Type: D2450V2; Serial: D2450V2 - SN736**  
**Program: Dipole Calibration**

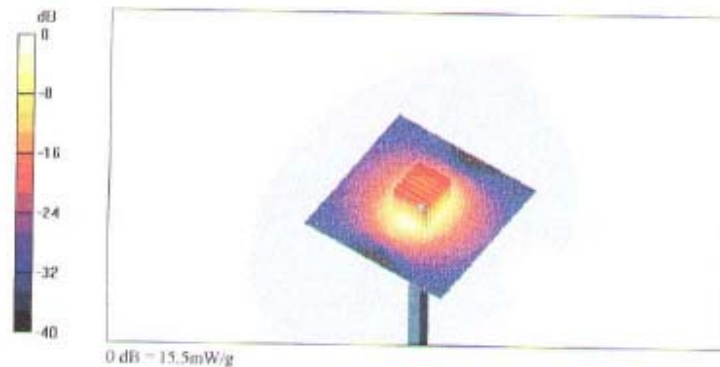
Communication System: CW-2450; Frequency: 2450 MHz; Duty Cycle: 1:1  
Medium: HSL 2450 MHz ( $\sigma = 1.89 \text{ mho/m}$ ,  $\epsilon_r = 38.19$ ,  $\rho = 1000 \text{ kg/m}^3$ )  
Phantom section: Flat Section  
Measurement Standard: DASY4 (High Precision Assessment)

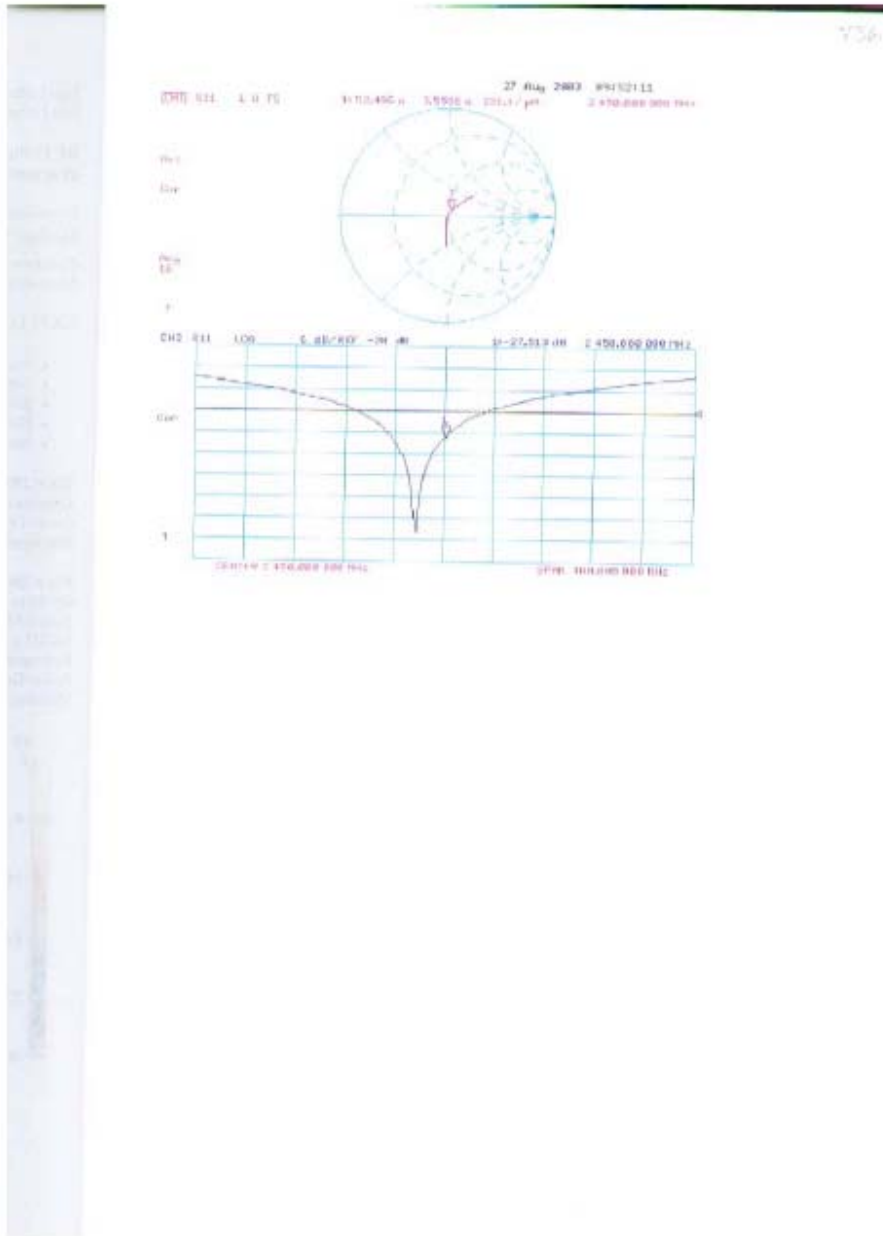
DASY4 Configuration:

- Probe: ESDV2 - SN3013; ConvF(4.8, 4.8, 4.8); Calibrated: 1/19/2003
- Sensor-Surface: 4mm (Mechanical Surface Detection)
- Electronics: DAE3 - SN411; Calibrated: 1/16/2003
- Phantom: SAM with CRP - TP1006; Type: SAM 4.0; Serial: TP1006
- Measurement SW: DASY4, V4.1 Build 47; Postprocessing SW: SEMCAD, V1.6 Build 115

**Pin = 250 mW; d = 10 mm/Area Scan (81x81x1); Measurement grid: dx=15mm, dy=15mm**  
Reference Value = 91.5 V/m  
Power Drift = -0.04 dB  
Maximum value of SAR = 15.3 mW/g



**Pin = 250 mW; d = 10 mm/Zoom Scan (7x7x7)/Cube 0; Measurement grid: dx=5mm, dy=5mm, dz=5mm**  
Peak SAR (extrapolated) = 30.2 W/kg  
SAR(1 g) = 13.9 mW/g; SAR(10 g) = 6.25 mW/g  
Reference Value = 91.5 V/m  
Power Drift = -0.04 dB  
Maximum value of SAR = 15.5 mW/g





Calibration Laboratory of  
 Schmid & Partner  
 Engineering AG  
 Zeughausstrasse 43, 8004 Zurich, Switzerland

Client **Auden > Sporton Int. Inc.**

| CALIBRATION CERTIFICATE  |   |   |  |
|--|---|---|--|
| Object(s)  | ET3DV6 - SN:1788  |   |  |
| Calibration procedure(s)   | QA CAL-01.v2<br>Calibration procedure for dosimetric E-field probes |   |  |
| Calibration date:  | August 29, 2003   |   |  |
| Condition of the calibrated item   | In Tolerance (according to the specific calibration document)       |   |  |
| This calibration statement documents traceability of M&TE used in the calibration procedures and conformity of the procedures with the ISO/IEC 17025 international standard.   |   |   |  |
| All calibrations have been conducted in the closed laboratory facility, environment temperature 22 +/- 2 degrees Celsius and humidity < 75%.   |   |   |  |
| Calibration Equipment used (M&TE critical for calibration)   |   |   |  |
| Model Type   | ID #  | Cal Date (Calibrated by, Certificate No.) | Scheduled Calibration  |
| RF generator HP 8684C  | US3842U01700  | 4-Aug-99 (SPEAG, in house check Aug-02)   | in house check: Aug-05   |
| Power sensor E4412A  | MY41495277  | 2-Apr-03 (METAS, No 252-0250)             | Apr-04   |
| Power sensor HP 8481A  | MY41092180  | 18-Sep-02 (Agilent, No. 20020918)         | Sep-03   |
| Power meter EPM E4419B   | GB41293874  | 2-Apr-03 (METAS, No 252-0250)             | Apr-04   |
| Network Analyzer HP 8753E  | US37390585  | 18-Oct-01 (Agilent, No. 24BR1033101)      | in house check: Oct 03   |
| Fluke Process Calibrator Type 702  | SN: 6295803   | 3-Sep-01 (ELCAL, No.2360)                 | Sep-03   |
| Calibrated by:   | Name<br>Nico Veltens  | Function<br>Technician                    | Signature<br> |
| Approved by:   | Name<br>Kajsa Potvin  | Function<br>Laboratory Director           | Signature<br> |
| Date issued: August 28, 2003   |   |   |  |
| This calibration certificate is issued as an intermediate solution until the accreditation process (based on ISO/IEC 17025 International Standard) for Calibration Laboratory of Schmid & Partner Engineering AG is completed. |   |   |  |



Schmid & Partner Engineering AG

**s p e a g**

Zeughausstrasse 43, 8004 Zurich, Switzerland  
Phone +41 1 245 9700, Fax +41 1 245 9779  
info@speag.com, http://www.speag.com

# Probe ET3DV6

SN:1788

Manufactured: May 28, 2003  
Last calibration: August 29, 2003

Calibrated for DASY Systems

(Note: non-compatible with DASY2 system!)

ET3DV6 SN:1788

August 29, 2003

**DASY - Parameters of Probe: ET3DV6 SN:1788**

Sensitivity in Free Space

Diode Compression

|       |                             |       |           |    |
|-------|-----------------------------|-------|-----------|----|
| NormX | <b>1.68</b> $\mu V/(V/m)^2$ | DCP X | <b>95</b> | mV |
| NormY | <b>1.62</b> $\mu V/(V/m)^2$ | DCP Y | <b>95</b> | mV |
| NormZ | <b>1.71</b> $\mu V/(V/m)^2$ | DCP Z | <b>95</b> | mV |

Sensitivity in Tissue Simulating Liquid

Head                    900 MHz                     $\epsilon_r = 41.5 \pm 5\%$                      $\sigma = 0.97 \pm 5\%$  mho/m

Valid for f=800-1000 MHz with Head Tissue Simulating Liquid according to EN 50361, P1 528-200X

|         |                              |                  |             |
|---------|------------------------------|------------------|-------------|
| ConvF X | <b>6.6</b> $\pm 9.5\%$ (k=2) | Boundary effect: |             |
| ConvF Y | <b>6.6</b> $\pm 9.5\%$ (k=2) | Alpha            | <b>0.34</b> |
| ConvF Z | <b>6.6</b> $\pm 9.5\%$ (k=2) | Depth            | <b>2.48</b> |

Head                    1800 MHz                     $\epsilon_r = 40.0 \pm 5\%$                      $\sigma = 1.40 \pm 5\%$  mho/m

Valid for f=1710-1910 MHz with Head Tissue Simulating Liquid according to EN 50361, P1 528-200X

|         |                              |                  |             |
|---------|------------------------------|------------------|-------------|
| ConvF X | <b>5.3</b> $\pm 9.5\%$ (k=2) | Boundary effect: |             |
| ConvF Y | <b>5.3</b> $\pm 9.5\%$ (k=2) | Alpha            | <b>0.43</b> |
| ConvF Z | <b>5.3</b> $\pm 9.5\%$ (k=2) | Depth            | <b>2.80</b> |

Boundary Effect

Head                    900 MHz                    Typical SAR gradient: 5 % per mm

|                        |                              |      |      |
|------------------------|------------------------------|------|------|
| Probe Tip to Boundary  |                              | 1 mm | 2 mm |
| SAR <sub>iso</sub> [%] | Without Correction Algorithm | 8.7  | 5.0  |
| SAR <sub>iso</sub> [%] | With Correction Algorithm    | 0.3  | 0.5  |

Head                    1800 MHz                    Typical SAR gradient: 10 % per mm

|                        |                              |      |      |
|------------------------|------------------------------|------|------|
| Probe Tip to Boundary  |                              | 1 mm | 2 mm |
| SAR <sub>iso</sub> [%] | Without Correction Algorithm | 12.8 | 8.9  |
| SAR <sub>iso</sub> [%] | With Correction Algorithm    | 0.3  | 0.1  |

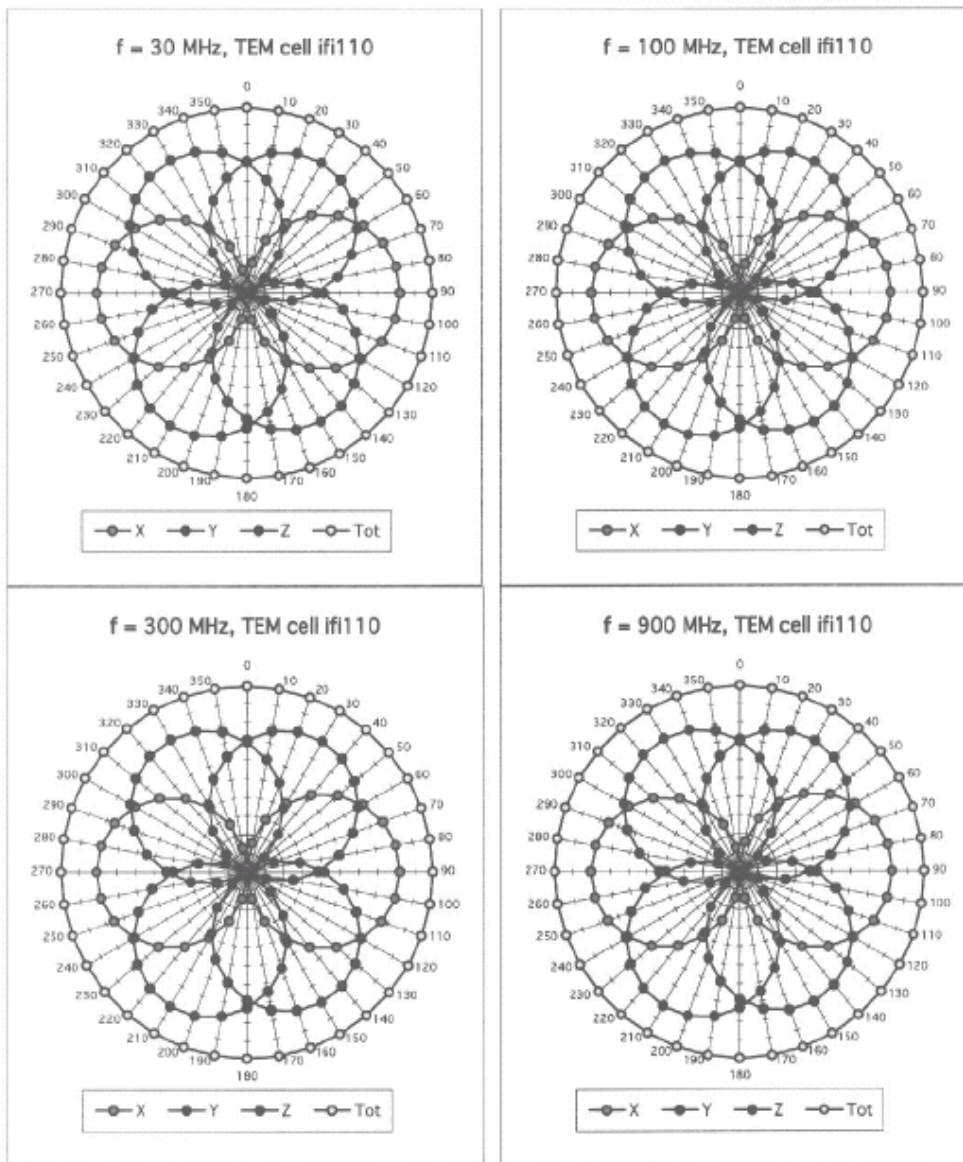
Sensor Offset

|                            |                                 |    |
|----------------------------|---------------------------------|----|
| Probe Tip to Sensor Center | <b>2.7</b>                      | mm |
| Optical Surface Detection  | <b>1.6 <math>\pm</math> 0.2</b> | mm |

ET3DV6 SN:1788

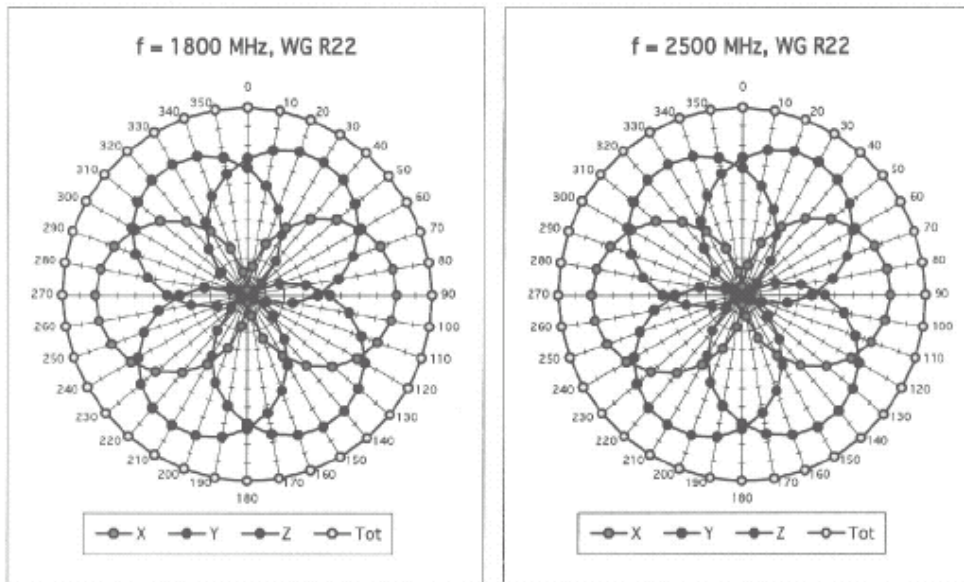
August 29, 2003

Receiving Pattern ( $\phi$ ),  $\theta = 0^\circ$

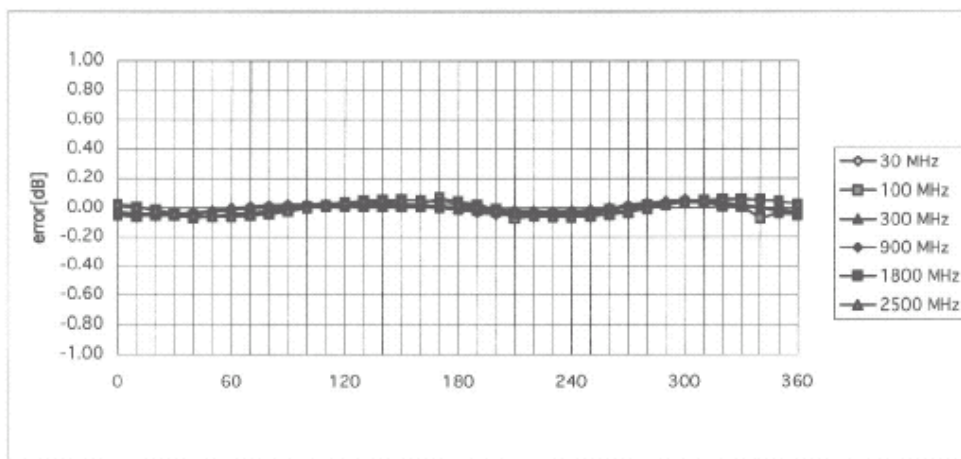


ET3DV6 SN:1788

August 29, 2003



Isotropy Error ( $\phi$ ),  $\theta = 0^\circ$

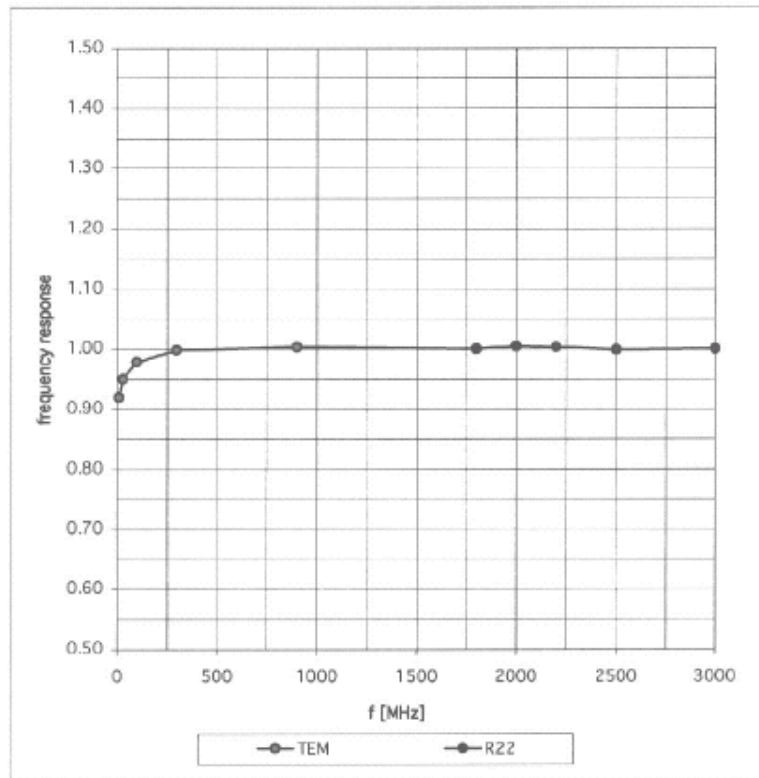


ET3DV6 SN:1788

August 29, 2003

### Frequency Response of E-Field

( TEM-Cell:if1110, Waveguide R22)

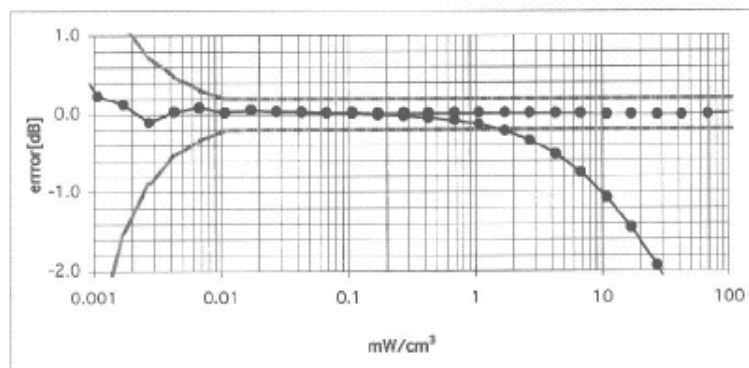
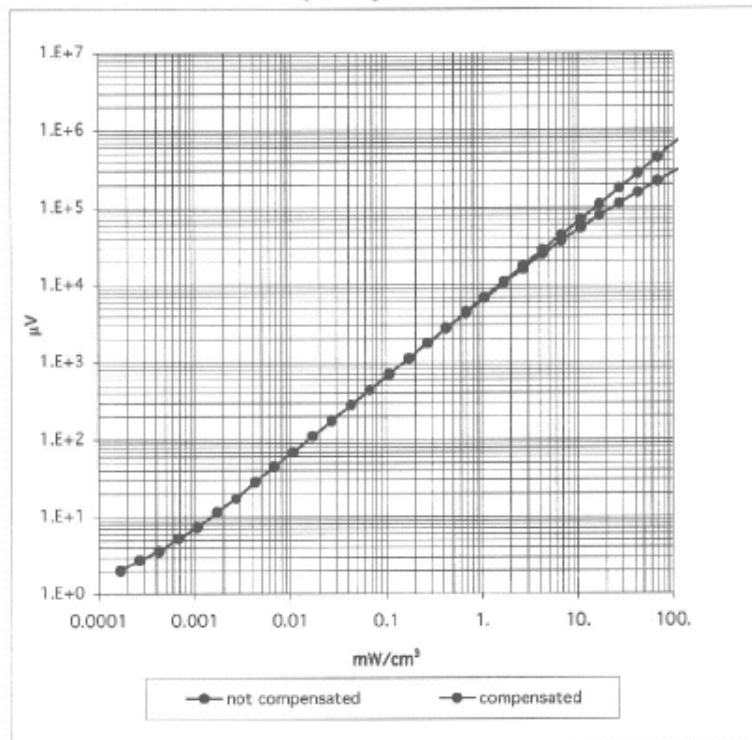


ET3DV6 SN:1788

August 29, 2003

### Dynamic Range $f(SAR_{brain})$

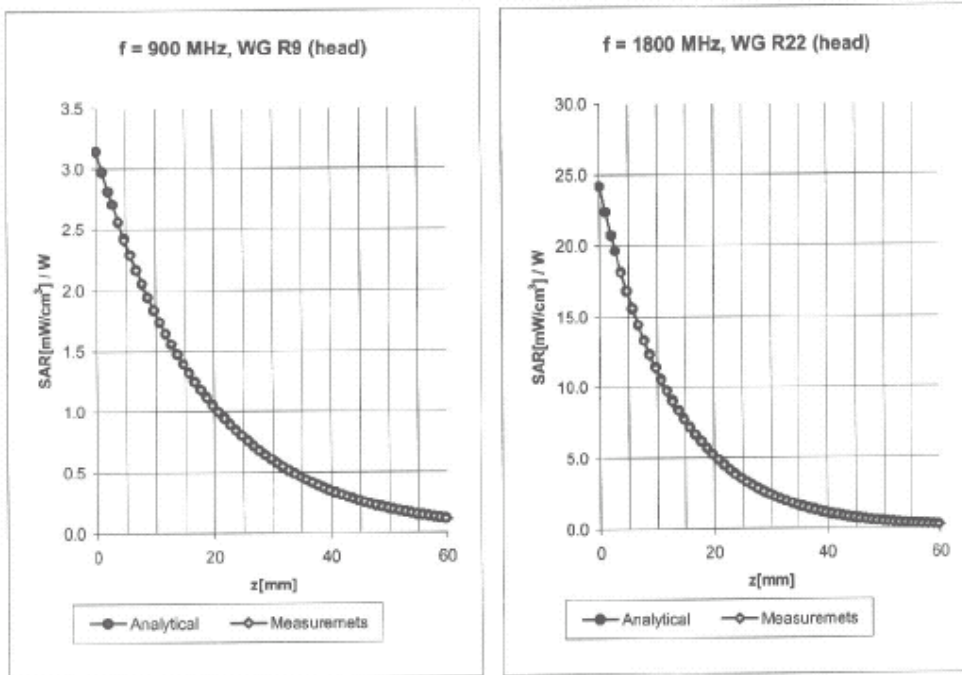
( Waveguide R22 )



ET3DV6 SN:1788

August 29, 2003

### Conversion Factor Assessment



Head                      900 MHz                       $\epsilon_r = 41.5 \pm 5\%$                        $\sigma = 0.97 \pm 5\%$  mho/m

Valid for f=800-1000 MHz with Head Tissue Simulating Liquid according to EN 50361, P1528-200X

|         |                  |                  |      |
|---------|------------------|------------------|------|
| ConvF X | 6.6 ± 9.5% (k=2) | Boundary effect: |      |
| ConvF Y | 6.6 ± 9.5% (k=2) | Alpha            | 0.34 |
| ConvF Z | 6.6 ± 9.5% (k=2) | Depth            | 2.48 |

Head                      1800 MHz                       $\epsilon_r = 40.0 \pm 5\%$                        $\sigma = 1.40 \pm 5\%$  mho/m

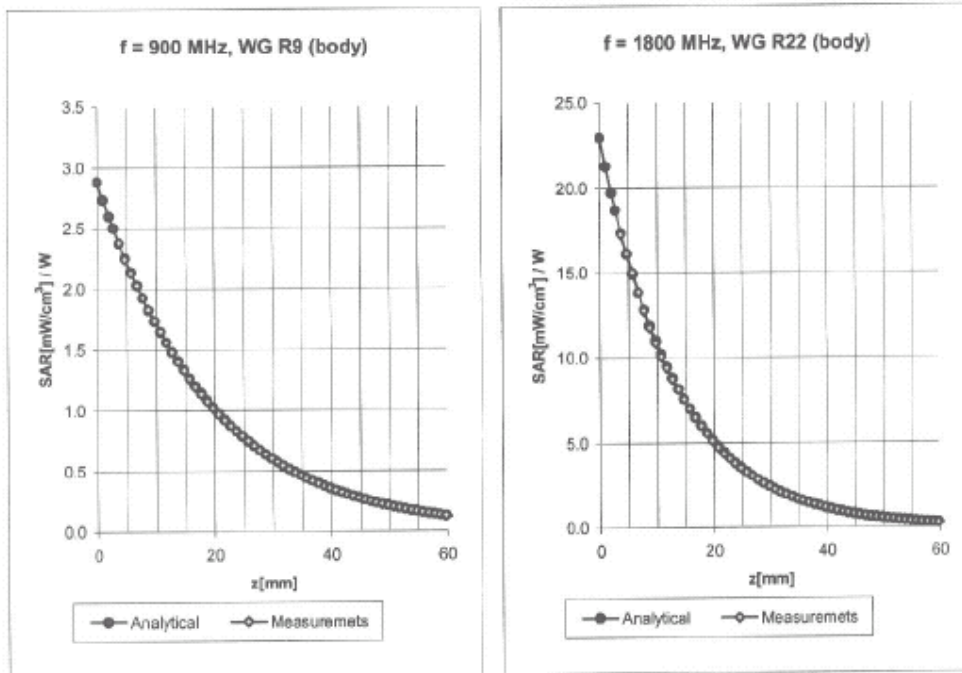
Valid for f=1710-1910 MHz with Head Tissue Simulating Liquid according to EN 50361, P1528-200X

|         |                  |                  |      |
|---------|------------------|------------------|------|
| ConvF X | 5.3 ± 9.5% (k=2) | Boundary effect: |      |
| ConvF Y | 5.3 ± 9.5% (k=2) | Alpha            | 0.43 |
| ConvF Z | 5.3 ± 9.5% (k=2) | Depth            | 2.80 |

ET3DV6 SN:1788

August 29, 2003

### Conversion Factor Assessment



Body                      900 MHz                       $\epsilon_r = 55.0 \pm 5\%$                        $\sigma = 1.05 \pm 5\%$  mho/m

Valid for f=800-1000 MHz with Body Tissue Simulating Liquid according to OET 65 Suppl. C

|         |                  |                  |      |
|---------|------------------|------------------|------|
| ConvF X | 6.5 ± 9.5% (k=2) | Boundary effect: |      |
| ConvF Y | 6.5 ± 9.5% (k=2) | Alpha            | 0.31 |
| ConvF Z | 6.5 ± 9.5% (k=2) | Depth            | 2.92 |

Body                      1800 MHz                       $\epsilon_r = 53.3 \pm 5\%$                        $\sigma = 1.52 \pm 5\%$  mho/m

Valid for f=1710-1910 MHz with Body Tissue Simulating Liquid according to OET 65 Suppl. C

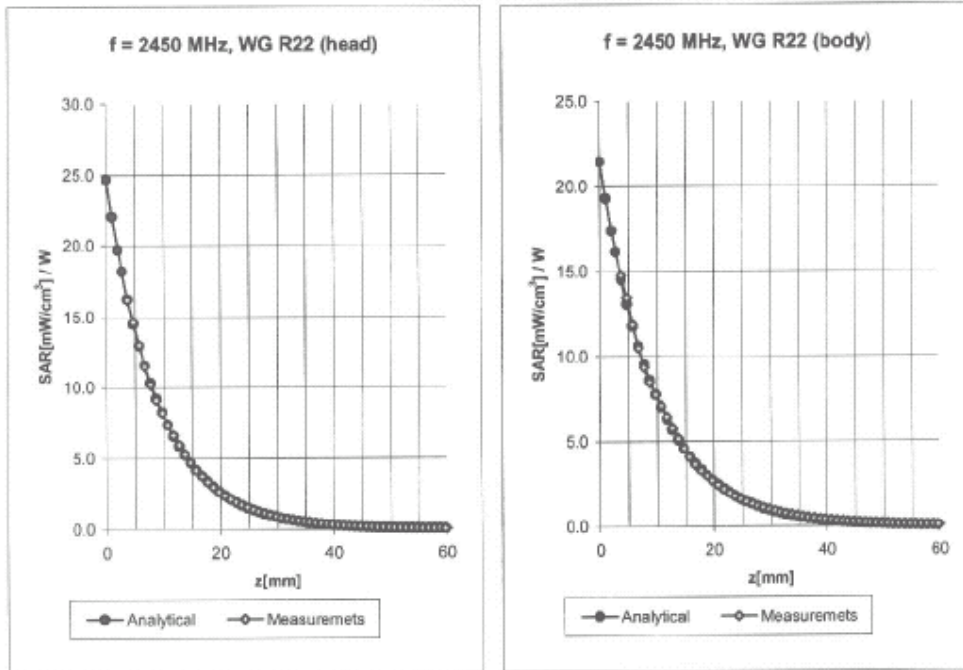
|         |                  |                  |      |
|---------|------------------|------------------|------|
| ConvF X | 5.0 ± 9.5% (k=2) | Boundary effect: |      |
| ConvF Y | 5.0 ± 9.5% (k=2) | Alpha            | 0.51 |
| ConvF Z | 5.0 ± 9.5% (k=2) | Depth            | 2.78 |



ET3DV6 SN:1788

August 29, 2003

### Conversion Factor Assessment



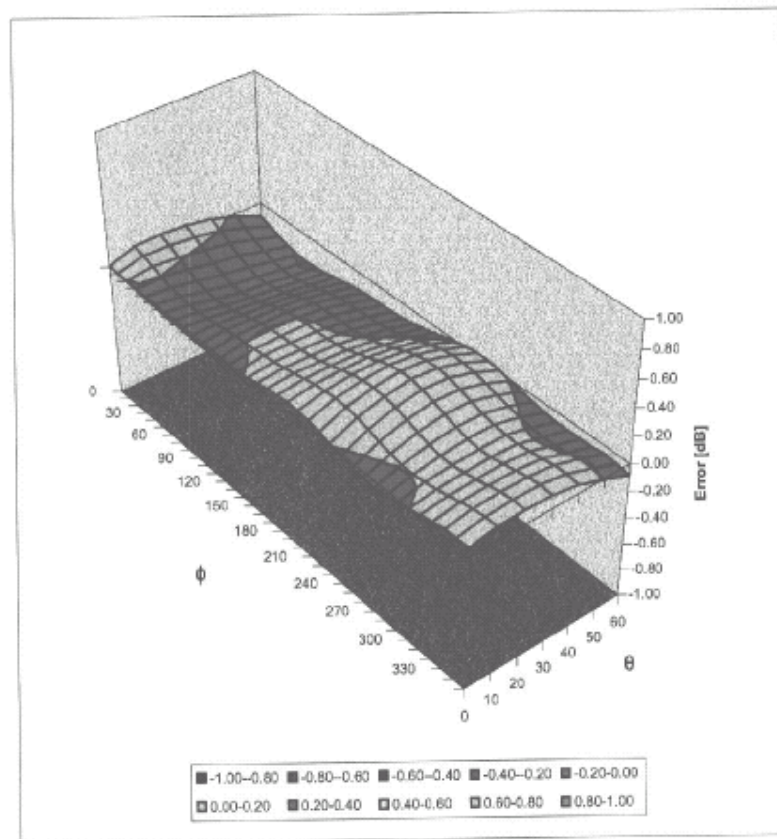
|  |                  |                             |                               |
|--|------------------|-----------------------------|-------------------------------|
| <b>Head</b>  | <b>2450 MHz</b>  | $\epsilon_r = 39.2 \pm 5\%$ | $\sigma = 1.80 \pm 5\%$ mho/m |
| Valid for f=2400-2500 MHz with Head Tissue Simulating Liquid according to EN 50361, P1528-200X |                  |                             |                               |
| ConvF X  | 4.7 ± 8.9% (k=2) | Boundary effect:            |                               |
| ConvF Y  | 4.7 ± 8.9% (k=2) | Alpha                       | <b>0.99</b>                   |
| ConvF Z  | 4.7 ± 8.9% (k=2) | Depth                       | <b>1.81</b>                   |
| <br>   |                  |                             |                               |
| <b>Body</b>  | <b>2450 MHz</b>  | $\epsilon_r = 52.7 \pm 5\%$ | $\sigma = 1.95 \pm 5\%$ mho/m |
| Valid for f=2400-2500 MHz with Body Tissue Simulating Liquid according to OET 65 Suppl. C      |                  |                             |                               |
| ConvF X  | 4.5 ± 8.9% (k=2) | Boundary effect:            |                               |
| ConvF Y  | 4.5 ± 8.9% (k=2) | Alpha                       | <b>1.01</b>                   |
| ConvF Z  | 4.5 ± 8.9% (k=2) | Depth                       | <b>1.74</b>                   |

ET3DV6 SN:1788

August 29, 2003

### Deviation from Isotropy in HSL

Error ( $\theta, \phi$ ),  $f = 900$  MHz



Appendix D. Photographs of EUT

