

AmbiCom Technology, Inc

**Bluetooth Wireless USB Adapter
User's Manual**



Bluetooth Software's installation manual

You can follow these instructions to install the Bluetooth software for your Bluetooth Adapter.

Note: 1. You should install the Widcomm's Bluetooth Software for Windows (BTW) before you use the Bluetooth Adapter.

2. The version of BTW software in this CD is BTW1.4.2.

3. Each Bluetooth Adapter has its own Bluetooth Device Address (BD address), and also each BTW has its own Security Key (i.e. Security Code), corresponding to your Bluetooth Adapter.

4. We strongly recommend you to install Bluetooth software by using the security key number on the label instead of via the Internet.

* * The security key (S.K.) number and BD address (B.D.) is on the label on your Bluetooth Adapter

1. Start

1.1 You will see the following screen when you plug your Bluetooth Adapter into the USB slot in your computer.

Click "Cancel" to skip the driver installation of "Found New Hardware Wizard of Windows".

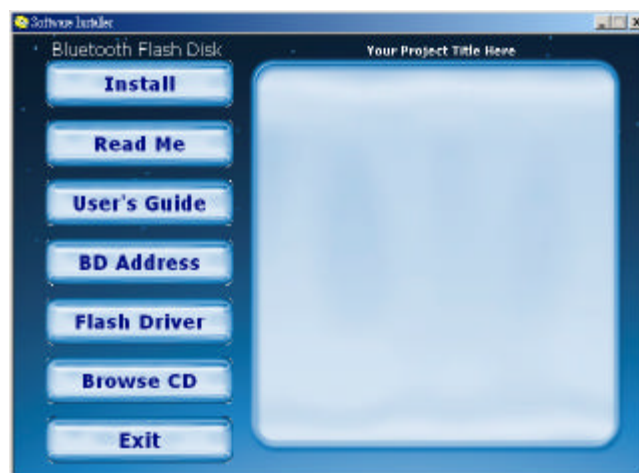


2. Installing from a CD

Installing BTW software is an automated process made easy by the use of the InstallShield Wizard. You will need to:

2.1 Exit all applications.

2.2 Insert the CD, the main menu of software will show up automatically. Please click "Install" icon on the CD.



NOTE:

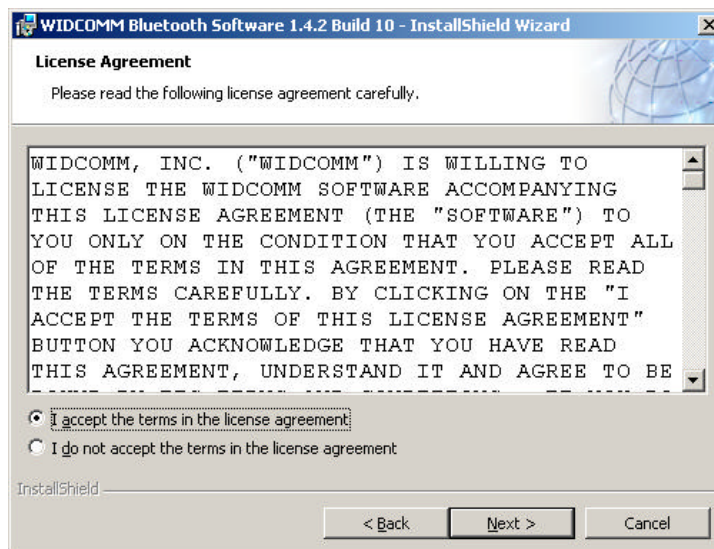
Any previous version of BTW software will be uninstalled when installing this BTW 1.4.2 version.

Or you can uninstall BTW manually by using the Add/Remove Programs window in the Control Panel.

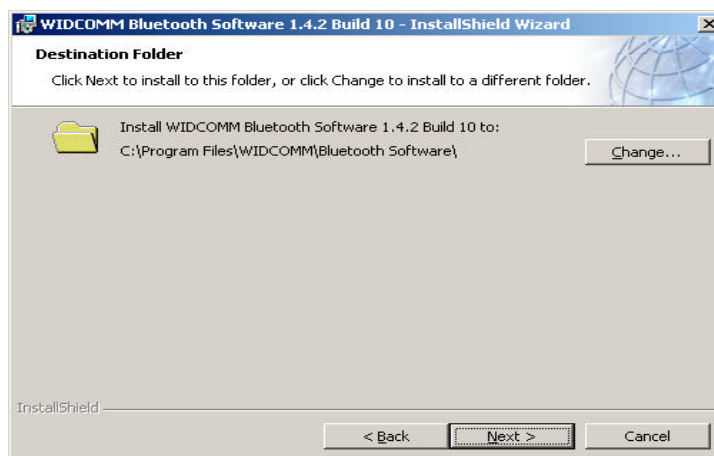
2.3 Automatically execute BTW and you will go to the following screen. When the Welcome screen appears, Click "Next" to continue.



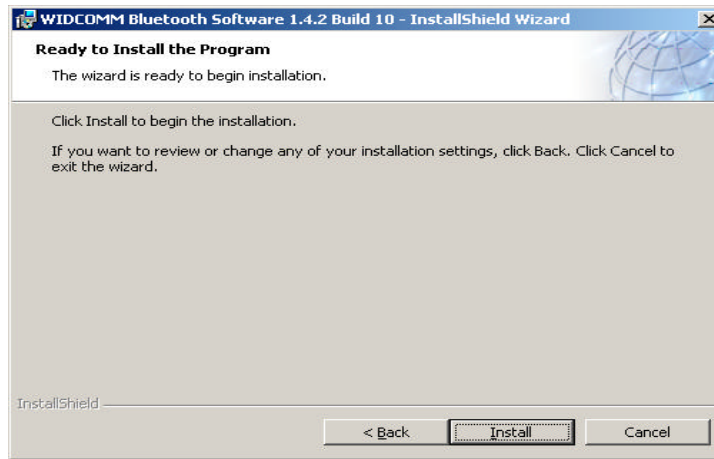
2.3.1 Choose "I accept the terms in the license agreement" and Click "Next" to continue.



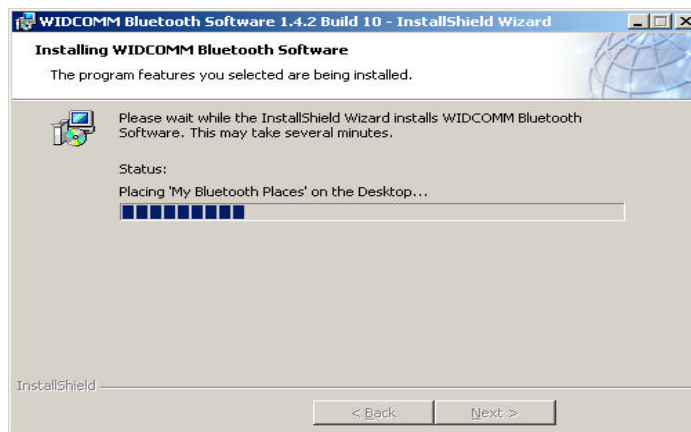
2.3.2 Select the destination directory you prefer, then click "Next" button



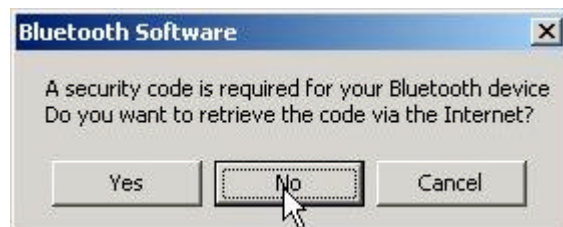
2.3.3 Click "Install" to begin the installation.



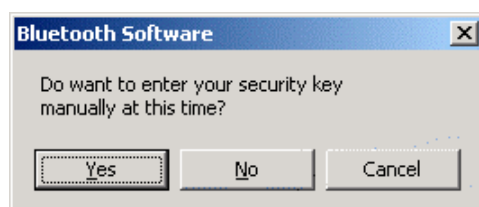
2.3.4 The status bar will display your progress.



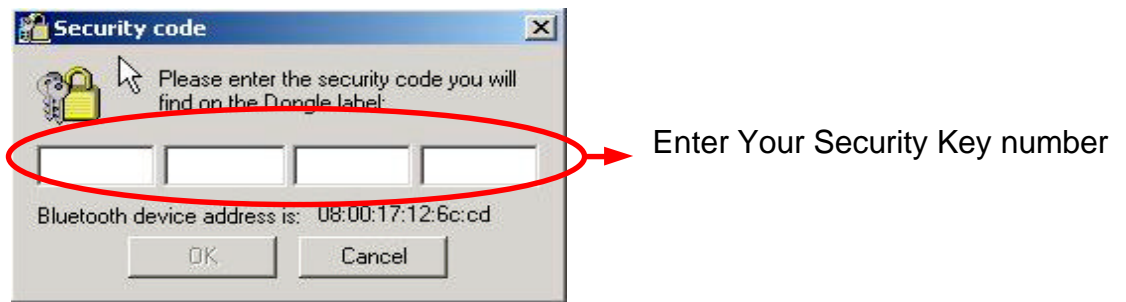
2.3.5 Click "No" to the next step.



2.3.6 Click "Yes" button to enter security key now



2.3.7 Type the security key number into the following row.



Note: The security key number is on the label on your Bluetooth Adapter.

Then click “OK” to continue installation.



2.3.8 Click “Finish” to complete the installation.

Re-boot your computer, you can begin to use Bluetooth software (BTW1.4.2).



Note: If you have any installation problem, please refer to the following Troubleshooting section.

Troubleshooting

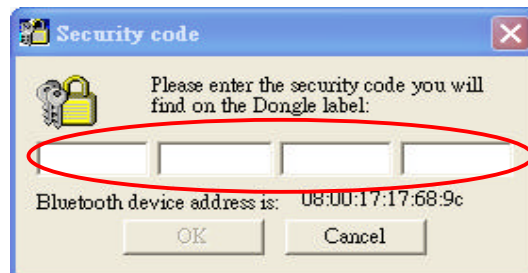
1. Your Bluetooth Adapter can not work?

1.1 Please go to the main menu, "BD address" page,



1.2 Double check the security key number and key-in the correct one.

Re-boot your computer, and you can begin to use Bluetooth software (BTW1.4.2).



Enter the correct security key number

2. To retrieve the security key via the Internet

Note: 1. Connect your computer to the Internet first.

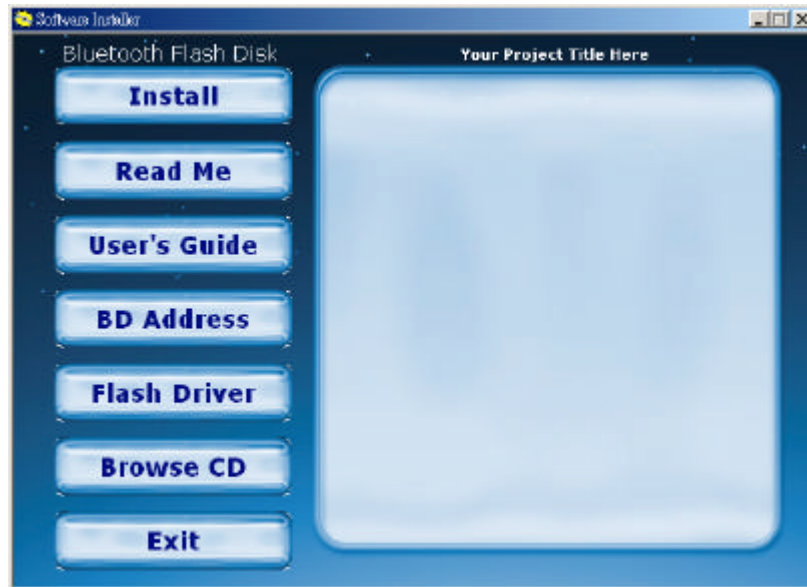
2. You can only retrieve the security key via the Internet in the same computer, but you can't do it with other computer.

2.1 Installing from a CD

Installing BTW software is an automated process made easy by the use of the InstallShield Wizard. You will need to:

2.1.1 Exit all applications.

2.1.2 Insert the CD, the main menu of software will show up automatically. Please click "Install" icon on the CD.



NOTE:

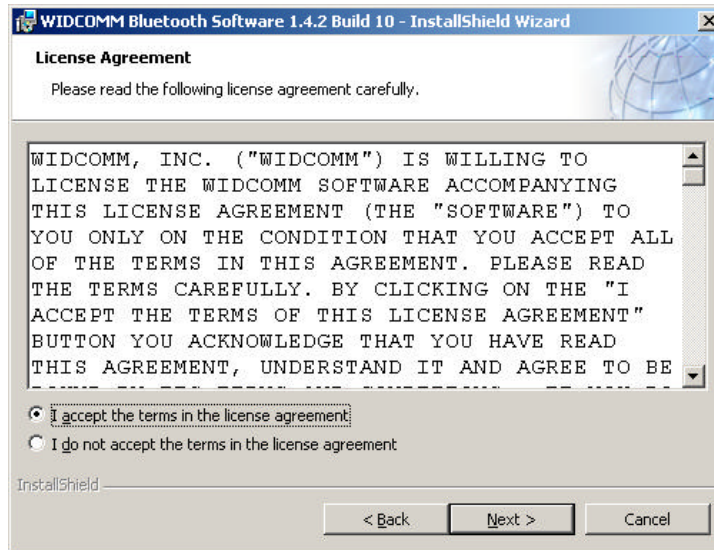
Any previous version of BTW software will be uninstalled when installing this BTW 1.4.2 version.

Or you can uninstall BTW manually by using the Add/Remove Programs window in the Control Panel.

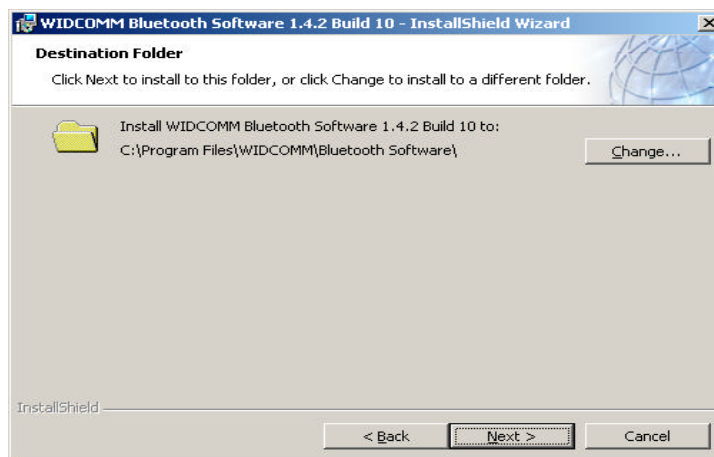
2.2 Automatically execute BTW and you will go to the following screen. When the Welcome screen appears, Click "Next" to continue.



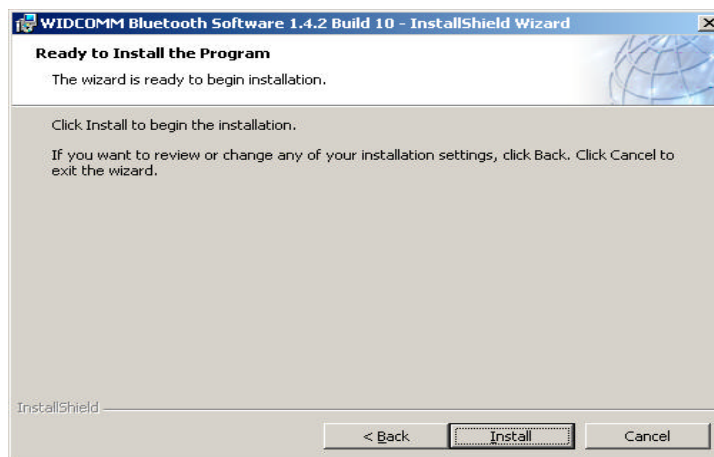
2.2.1 Choose "I accept the terms in the license agreement" and Click "Next" to continue.



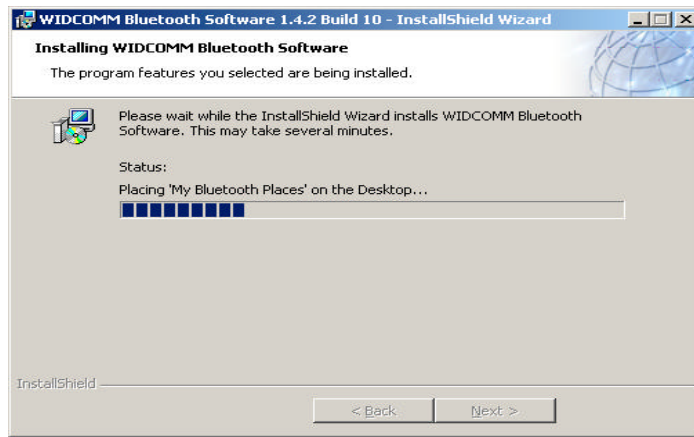
2.2.2 Select the destination directory you prefer, then click "Next" button



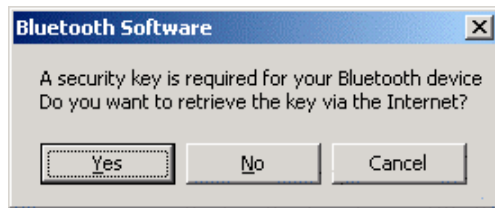
2.2.3 Click "Install" to begin the installation.



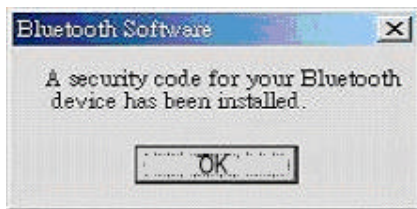
2.2.4 The status bar will display your progress.



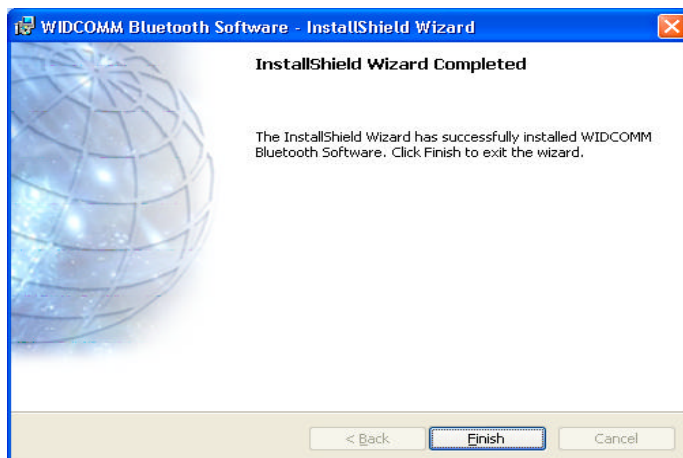
2.2.5 Click “Yes” to the next step.



Then click “OK” button to the next step.



2.2.6 Click “finish” button to complete the installation. **Re-boot your computer**, you can begin to use Bluetooth software (BTW1.4.2).



Note: the Bluetooth software installation is done via the Internet.

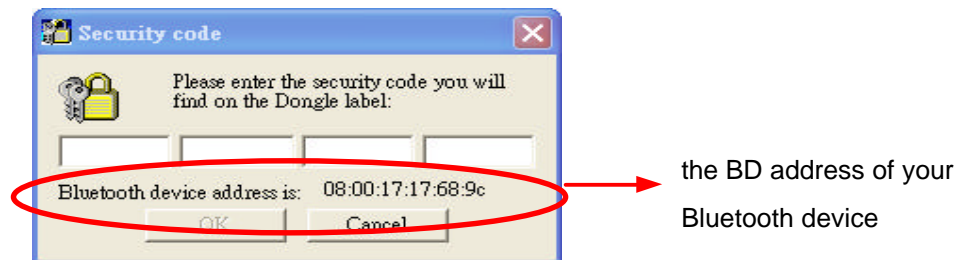
Note: If your office network system has been setup with firewall, or your network have any trouble to the Internet, please follow the below steps to retrieve the security key manually by connecting to the WIDCOMM's Website.

3. To retrieve the security key manually via the WIDCOMM's website

In the above step 2.2.5, if your office network system have any problem connecting to the Internet, the following message will appear. Then click "OK" button to the next step.



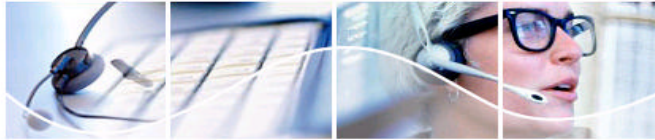
Click "Yes" button to find the BD Address of your Bluetooth Adapter.



Connect to the <http://66.45.42.85/formosa>. At the following screen, please enter the related information. Then you will get the Security Key sent from the WIDCOMM's company through the e-mail system.

Note: 1.If you lose the security key, you must use the same e-mail address to get yours again.

2. Make sure the BD address you type is 12 characters long (No commas, colons, semicolons, or spaces)



Module Security Key Web Form

Thank you for purchasing your WIDCOMM product. This is the form for obtaining the Module Security Key required to unlock your Bluetooth Software product. You must have your Bluetooth device's BD Address. If you do not know your device's BD Address, follow the steps found [here](#).

The Security Key will be **emailed** to an address you provide, so it **must be valid** for you to get your key.

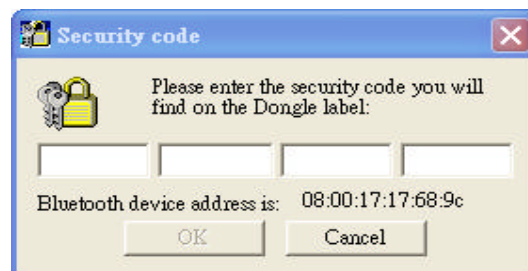
NOTE: Some of the information in this form is mandatory, but we ask that you supply as much information as possible.

Fields in **BLUE** represent required information.

Contact Information	
*First Name:	<input type="text"/>
*Last Name:	<input type="text"/>
Street Address:	<input type="text"/>
City:	<input type="text"/>
State or Province:	<input type="text"/>
Zip Code:	<input type="text"/>
*Country:	United States <input type="button" value="v"/>
*Email:	<input type="text"/>
*Confirm Email:	<input type="text"/>
Phone:	<input type="text"/>
Title:	<input type="text"/>
Company:	<input type="text"/>
Can we contact you with special offers? Read our Privacy Policy	
You may contact me anytime	<input checked="" type="checkbox"/>
Bluetooth Device	
*Manufacturer:	FORMOSA <input type="button" value="v"/>
*BD Address: (What's this?)	<input type="text"/>
*Confirm BD Address (Same as above):	<input type="text"/>
I use this for:	<input type="radio"/> Personal <input type="radio"/> Business <input type="radio"/> Both
<input type="button" value="Submit"/> <input type="button" value="Reset"/>	

Finally, you should click the "BD address" icon on the main menu of the CD, and enter the Security Key you get on your e-mail, and then type it into the "Security Code" row and click "OK".

Re-boot your computer, you can begin to use Bluetooth software (BTW1.4.2).



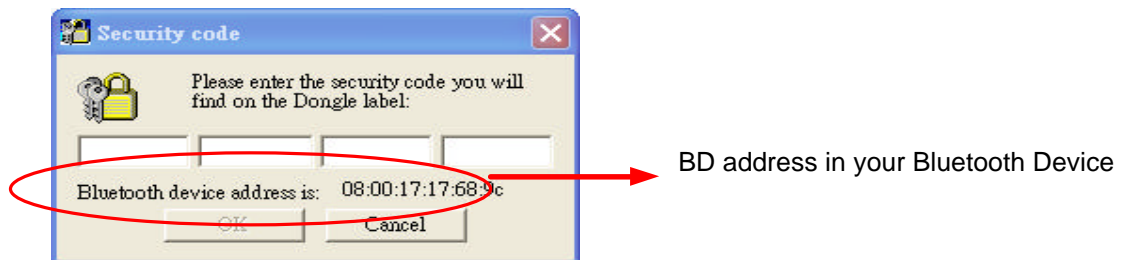
4. How to get the BD address of your Bluetooth Adapter?

You must plug your Bluetooth Adapter into your notebook or PC and insert the CD.

The main menu will show up automatically. Please click “BD address” icon on the CD.

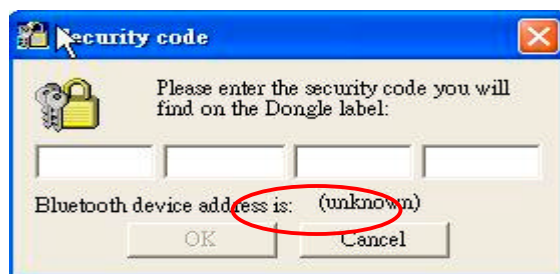


The following screen will appear and you can read the BD address of your Bluetooth Adapter.



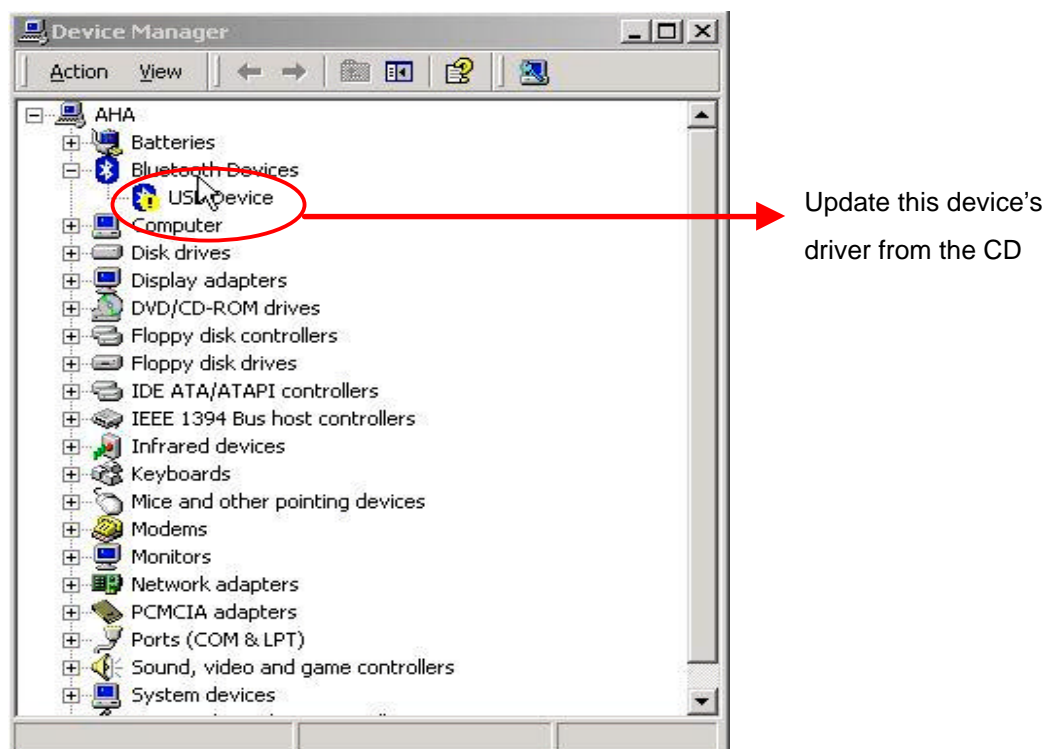
5. Software Problem of Bluetooth Adapter

If you can not get the BD address at the following page, it means you don't install the Bluetooth Software correctly



You must :

1. Follow the steps: “Start” Settings Control Panel System
2. Go to the “Hardware” tag and click the “Device Manager” button, then find the device which has problem, as show in the following screen, and update its driver from the CD.



FCC Statement

The changes or modifications not expressly approved by the party responsible for compliance could void the user's authority to operate the equipment.

User Information

This device complies with part 15 of FCC Rules. Operation is subject to the following two conditions:

- (1) This device may not cause harmful interference, and
- (2) This device must accept any interference received, including interference that may cause undesired operation.

The FCC require the user to be notified that any changes or modification made to this device that are not expressly approved by **AmbiCom Technology, Inc.** may avoid the user's authority to operate the equipment.

To comply with FCC RF exposure requirement, this device and its antenna must be co-located or operating in the conjunction with any other antenna or transmitter.

FCC COMPLIANCE STATEMENT:

This device complies with part 15 of the FCC Rules. Operation is subject to the following two conditions: (1) This device may not cause harmful interference, and (2) this device must accept any interference received, including interference that may cause undesired operation.

INFORMATION TO USER:

This equipment has been tested and found to comply with the limits of a Class B digital device, pursuant to Part 15 of the FCC Rules. These limits are designed to provide reasonable protection against harmful interference in a residential installation. This equipment generates, uses and can radiate radio frequency energy and, if not installed and used in accordance with the instructions, may cause harmful interference to radio communications. However, there is no guarantee that interference will not occur in a particular installation; if this equipment does cause harmful interference to radio or television reception, which can be determined by turning the equipment off and on, the user is encouraged to try to correct the interference by one or more of the following measures:

- 1. Reorient / Relocate the receiving antenna.*
- 2. Increase the separation between the equipment and receiver.*
- 3. Connect the equipment into an outlet on a circuit different from that to which the receiver is connected.*
- 4. Consult the dealer or an experienced radio/TV technician for help.*

CAUTION: Changes or modifications not expressly approved by the manufacturer responsible for compliance could void the user's authority to operate the equipment

RF EXPOSURE COMPLIANCE STATEMENT:

To comply with FCC RF exposure requirements, this device and its antenna must not be co-located or operating in the conjunction with any other antenna or transmitter