

smanos®
Dream Big. Live Smart.

smanos®



SS-20 Indoor Siren

EN

DE

FR

NL

ES

PT

IT

USER MANUAL

FCC STATEMENT

1. This device complies with Part 15 of the FCC Rules. Operation is subject to the following two conditions:
 - (1) This device may not cause harmful interference, and
 - (2) This device must accept any interference received, including interference that may cause undesired operation.
2. Changes or modifications not expressly approved by the party responsible for compliance could void the user's authority to operate the equipment.

NOTE: This equipment has been tested and found to comply with the limits for a Class B digital, pursuant to Part 15 or the FCC Rules. These limits are designed to provide reasonable protection against harmful interference in a residential installation. This equipment generates, uses and can radiate radio frequency energy and, if not installed and used in accordance with the instructions, may cause harmful interference to radio communications. However, there is no guarantee that interference will not occur in a particular installation. If the equipment does cause harmful interference to radio or television reception, which can be determined by turning the equipment off and on, the user is encouraged to try to correct the interference by one or more of the following measures:

- Reorient or relocate the receiving antenna.
- Increase the separation between the equipment and receiver.
- Connect the equipment into an outlet on a circuit different from that to which the receiver is connected.
- Consult the dealer or an experienced radio/ TV technician for help.

Industry Canada Notice

This device complies with Industry Canada licence-exempt RSS standard(s).

1. Operation is subject to the following two conditions:
 - (1) this device may not cause interference, and
 - (2) this device must accept any interference, including interference that may cause undesired operation of the device."
2. Changes or modifications not expressly approved by the party responsible for compliance could void the user's authority to operate the equipment.

Avis d'Industrie Canada

Le présent appareil est conforme aux CNR d'Industrie Canada applicables aux appareils radio exempts de licence. L'exploitation est autorisée aux deux conditions suivantes : (1) l'appareil ne doit pas produire de brouillage, et (2) l'utilisateur de l'appareil doit accepter tout brouillage radioélectrique subi, même si le brouillage est susceptible d'en compromettre le fonctionnement. Cet appareil numérique ne dépasse pas les Rèlements sur l'interférence radio par un appareil numérique de classe B stipulées dans les Règlement sur l'interférence radio d'industrie Canada.

Introduction

The SS-20 Indoor Siren will go off on-site, with a loud 90dB siren sound, to deter any would-be intruders when a sensor of K1 system has been triggered. It is smart to have 2-4 sirens strategically placed around your home as it easily deters any intruder if they defeated one siren but still hear NOISE! Intruders DO NOT like attention. Also consider a smanos SS-2800 outdoor Strobe Siren for even more noise and attention with the flashing strobe.

Pairing to the K1 Hub

This Siren needs to be paired to the K1 Hub first before use. To pair the Siren, please refer to the K1 Hub's user manual or in the K1 section of the smanos home app, press the "+" button and follow the instructions on the Accessories page to easily add your smanos SS-20 siren.

Product Overview

Back View with mounting plate & level



Tamper Switch
LED Indicator

LED Indicator

Blinks rapidly: K1 system is alarming.

Blinks once per 3 seconds: Low battery, please change the batteries.

Tampering Switch

Anti-tampering protection ensures that any attempts to remove the cover results in the alarm sounding as well as email and push notification.

Installation

The Siren can be placed in any location as long as it is within the range with K1 Hub

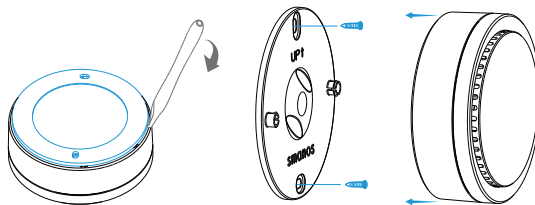


Set the entire system status to Arm and then press the Tamper Switch on the backside of the SS-20 (as shown) to trigger an alarm which confirms the connection with K1 Hub



Install the Siren using either the double-sided tape or the screws with mollys included in the package.

Notice: Removing the Back Cover will result in triggering the system and the siren sounding. You can disarm simply the alarm with the app or KP-20 and continue the installation.



Specifications

Model: SS-20

Power: 3V CR123A Li-Mn battery x 4 pcs

Sound: 90 Decibels

Frequency: 915MHz

Wireless range: ≤ 80 m (in open area)

Operating conditions:

0-50°C / 32° - 122°F, humidity < 90% RH (non-condensing)

Dimensions (L x W x H): 85 x 85 x 37mm / 3.35" x 3.35" x 1.46"