

INTERNAL PHOTOGRAPHS

This document contains 7 photographs

Photograph No.1
Passive infrared detector
Internal view



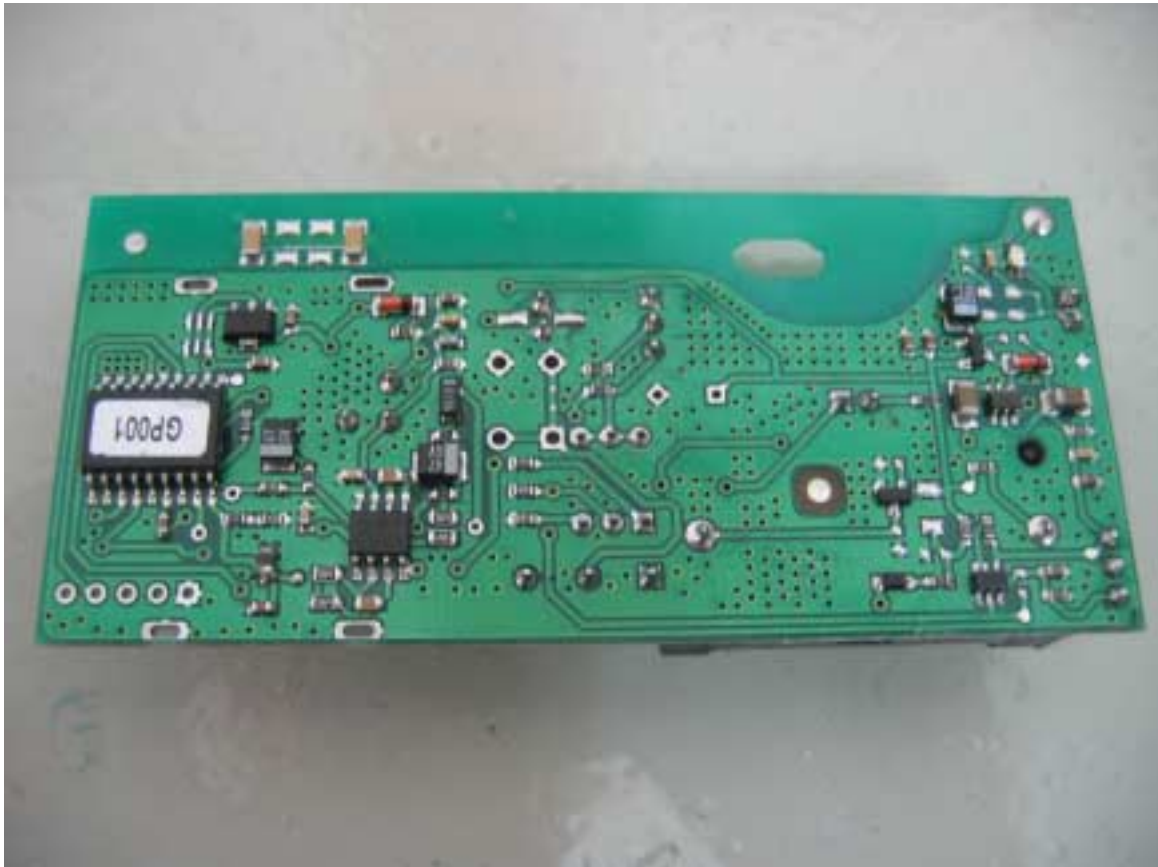
Photograph No.2
Passive infrared detector
Internal view



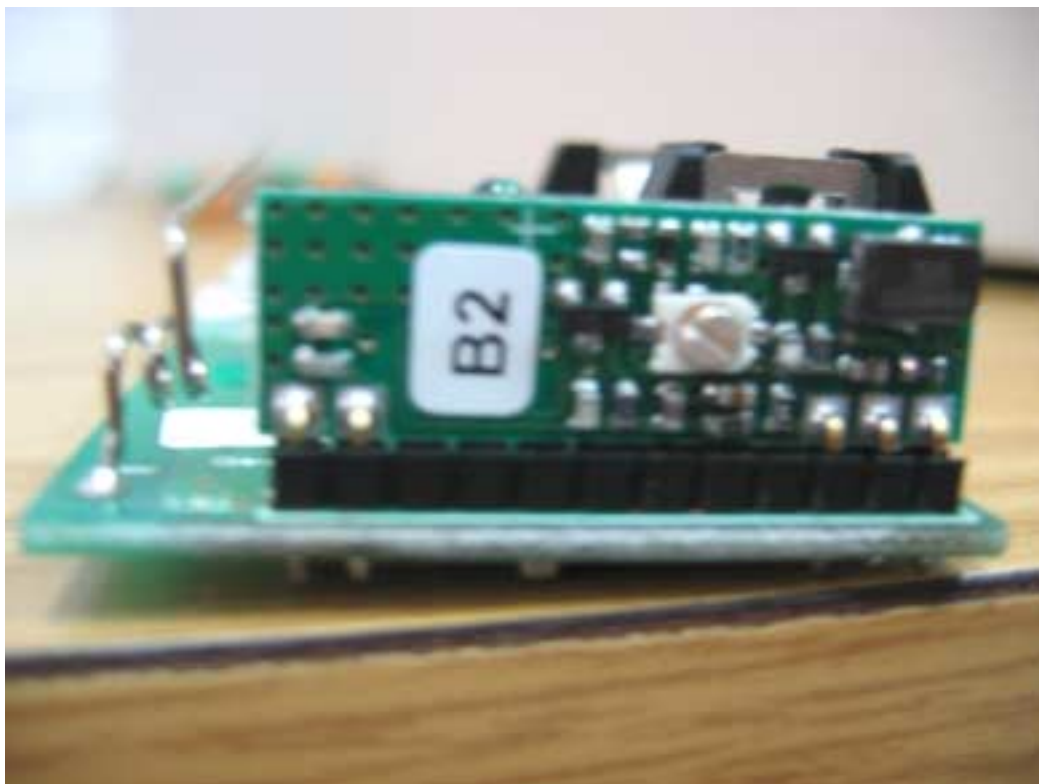
Photograph No.3
Passive infrared detector
PCB front view



Photograph No.4
Passive infrared detector
PCB rear side view



Photograph No.5
Passive infrared detector
Daughter board front view



Photograph No.6
Passive infrared detector
Daughter board front view



Photograph No.7
Passive infrared detector
Daughter board second side view

