

► Contents

- SPECIFICATIONS
- DISCLAIMER
- WARRANTY / LIABILITIES
- PACKAGE CONTENT
- INSTALLATIONS
- BATTERY OPERATIONS
- SPEAKERPHONE OPERATIONS
- BUTTON FUNCTIONS AND OPERATION
- CARE AND MAINTENANCE
- TROUBLE SHOOTING
- CUSTOMER SERVICE / CONTACT US
- FCC / ICC

► Specifications

- Bluetooth® Spec.: v2.1
- Weight: 45g
- Talk Time: 5 Hours
- Standby Time: 150 Hours
- Profiles Support: Headset, Handsfree
- Operating Range: 10 Meters
- Operation Voltage: 3.3V
- Battery: Li-polymer, 300mAh
- Noise / Echo Reduction: CVC Noise & Echo Reduction
- Volume Control Level: 15 Levels
- Operating Temperature: -5°C to 40°C
- Storage Temperature: -10°C to 70°C

*Notes:

Manufacturer of Car charger: DongGuan Channex Electronics Products Co., Ltd

Model No: SAC-171-0500650-1

Input voltage: 12V-24V DC

Output No Load: 5.0V~5.5V DC

Load: 4.7V~5.3V DC 650mA

Disclaimer

- Distracted driving is dangerous. Always use the Bluetooth® Device in a manner that does not reduce your attention and ability to drive carefully and safely.
- Adhere to all applicable traffic laws and motor vehicle regulations applicable to the device.
- Consult local laws and regulations for any restrictions on installation or use.
- Do not install on or near an airbag. Such installation could interfere with airbag deployment or could cause the product or another object to become a projectile, which could result in serious personal injury to occupants.
- Ensure the product location will not obstruct your vision while driving.
- Observe all signs that require an electrical device or RF radio product to be switched off in the designated areas. These could include hospitals, blasting areas, and potentially explosive atmospheres.
- Turn off your device prior to boarding an aircraft. Do not use your device in an aircraft.
- Never allow children to play with the device. Small parts may be a choking hazard.

► Installations

⚠ IMPORTANT: Before installing the BTS30, make sure:

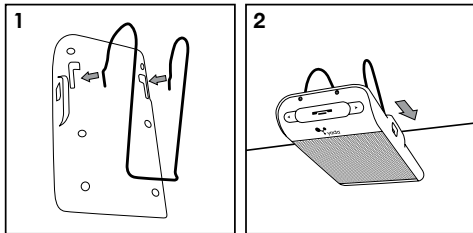
- Vehicle is parked in a safe area
- Car engine is OFF
- Emergency brake is set

Your BTS30 may be installed in your vehicle's sun visor.

Sun Visor Mounting

Follow the steps below to install the BTS30 to your car's sunshade panel:

- Attach and secure the visor mount on the back side of the BTS30
- Slide and mount the BTS30 to the vehicle's sun visor



Battery Operations

⚠ IMPORTANT: Before using the BTS30 Hands-Free Speakerphone:

- Charge the battery before using for the first time
- Only use rechargeable batteries provided

A. Low Battery Indication

Recharge battery when:

- Red indicator light turns red
- BTS30 emits a beeping sound

B. Charging the Battery

Follow the steps below when charging the BTS30 Hands-Free Speakerphone:

- Insert the charging cable to the USB charging port of the BTS30
- Plug the cable to a power port
- When the device is in charging mode, the red battery indicator light is On indicating that charging is in progress

NOTE:

- Standard charge time is around 3 hours
- Battery indicator light will turn Off once fully charged

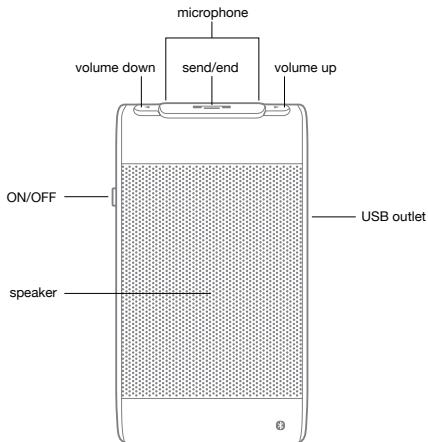
⚠ IMPORTANT: Do not leave unit charging unattended if you must leave key in the ignition to charge, unless your vehicle is equipped with a port that is powered with key out of ignition.

NOTE: To charge the unit at home, use a 12V DC to AC convert or use a USB power outlet with a USB to Mini USB cable

CAUTION: Risk of explosion if battery is replaced by an incorrect type. Dispose of used batteries according to the instructions.

NOTE: Actual talk time and standby time for the BTS30 will vary with different Bluetooth® enabled mobile phones due to different implementation of power down modes.

Speakerphone Operations



A. Power ON/OFF

To turn the BTS30 ON:

- Press and hold the **ON/OFF** button for 2 seconds
- The blue LED indicator will light up, indicating the standby mode was initiated

To turn the BTS30 OFF:

- Press and hold the **ON/OFF** button for 4 seconds (in any mode)
- The BTS30 will shut down
- A long beep sound is heard

B. Pairing/Linking

Pairing Bluetooth® enabled devices like mobile phones with the BTS30 Hands-Free Speakerphone authorizes the devices to work with each. This step only needs to be performed once.

Before Pairing the BTS30 Hands-Free Speakerphone:

- Ensure the BTS30 is fully charged
- Ensure that the BTS30 is unplugged from the charger
- Ensure the BTS30 is in the OFF mode
- Ensure the Bluetooth® on your mobile phone is activated

Follow the steps below to pair your BTS30 with your mobile phone for the first time:

- Press and hold **ON/OFF** key for 4 seconds until the LED indicator alternately blinks red and blue. Do not let go until you see both colors flashing

NOTE: BTS30 is now in pairing mode

- Activate the Bluetooth® settings of your mobile phone

NOTE: The following steps are general procedure; to access Bluetooth® Menu for your mobile phone, please refer to your phone user manual.

- Select SET-UP or CONNECT from your mobile phone menu
- Find and select OPTION to discover Bluetooth® devices; establishing a connection may take several minutes
- If found, phone display should indicate **BTS30** device was detected or Select “**BTS30**” from the list
- Phone should give you a prompt asking if you want to pair the device
- Select OK or ACCEPT and wait for prompt to enter passkey or PIN
- Enter the code **0000**
- Select “OK” to pair and connect the BTS30 and the handset

NOTE: The BTS30 can pair with more than one phone, however it can only connect to one phone at a time. If you wish to pair to a second phone, disable or turn OFF Bluetooth® on the phone already paired.

NOTE: Under the pairing mode, if the BTS30 and mobile handset did not successfully pair, follow the steps below to retry pairing:

- Turn BTS30 OFF
- Turn OFF all other Bluetooth® devices before starting the pairing process
- Repeat the pairing instructions from the beginning

C. Call Operations

Making / Receiving Calls

User can make a call either from the mobile phone or YD-V44. Before you make or receive calls, ensure:

- Bluetooth® connection is established between your BTS30 and mobile phone
- Battery is fully charged

1. Answering Calls

NOTE: Calls may be answered via the mobile handset in the normal way.

To answer calls via the BTS30:

- Check if power is ON and device is linked
- The BTS30 will ring or emit a beep sound when there is an incoming call
- Press the **SEND/END** button when ring tone is heard

NOTE: Some flip phones may require you to change phone answer setting to any key answer.

2. Rejecting Calls

- The BTS30 will ring or emit a beep sound when there is an incoming call
- Press and hold the **SEND/END** button for 2 seconds to reject a call

3. Terminating a Call

NOTE: Calls may be ended through the mobile phone. To end calls via the BTS30:

- Press the **SEND/END** button

4. Last Number Re-dial

To call last number dialed or called register:

- Press the **SEND/END** button twice

5. Voice Dialing

To enter voice dialing mode:

- Press and hold **SEND/END** button for 2 seconds
- The BTS30 will emit a beep sound

NOTE: Some phones will require you download the phonebook to the unit for the voice dialing function.

6. Making a Call

NOTE: The BTS30 doesn't have a numeric keyboard to support dialing. Use your Bluetooth® mobile phone to make outgoing calls.

- Ensure the BTS30 is paired with your Bluetooth® mobile phone before dialing
- Dial the number using your mobile phone key pad
- Press the call button of your mobile phone to make a call

7. Interchanging BTS30 and Handset

You may interchange the call between your handset and BTS30 while on a call

- Press and hold **SEND/END** button for 2 seconds
- The call will be transferred to your BTS30 unit from your mobile phone or vice versa

8. Adjusting the Volume

To adjust the volume during a call:

- Press **Volume Up** key to increase speaker volume
- Press **Volume Down** key to decrease speaker volume

NOTE: The above-mentioned functions are only applicable to the mobile phones which support the Bluetooth® Hands-Free function. Please refer to your Bluetooth® mobile phone user manual for appropriate applications.

9. Mute/Un-Mute Functions:

To Mute/Un-mute the BTS30 during an active call:

- Press the **ON/OFF** button
- The BTS30 will emit a beep

FCC Statement

15.19

This device complies with Part 15 of the FCC Rules.

Operation is subject to the following two conditions:

- (1) this device may not cause harmful interference, and
- (2) this device must accept any interference received, including interference that may cause undesired operation.

15.21

changes or modifications not expressly approved by the party responsible for compliance could void the user's authority to operate the equipment.

► Button Functions And Operation

BUTTON	FUNCTION	OPERATION
ON/OFF	Power ON	Press and hold for 2 seconds
	Power OFF	Press and hold for 4 seconds
	Pairing	Under OFF mode, press and hold for 4 seconds
	Mute/Un-Mute	Press 1 time
SEND/ END	Searching for Paired Device	Press 1 time
	Receive Call	Once ring tone is heard, press 1 time
	End Call	Press 1 time
	Reject	Press & hold for 2 seconds
	Last Call Redial	Press 2 times
	Voice Dial	Press and hold for 2 seconds
	Call Transfer	Press and hold for 2 seconds
	Call Waiting	Press 1 time to terminate the conversation and answer the new call
Volume Up	Increase Volume	Press repeatedly until you reach desired volume
Volume Down	Decrease Volume	Press repeatedly until you reach desired volume

Care And Maintenance

- Turn off the BTS30 when not in use
- Do not let the BTS30 be in contact with liquid as it is not waterproof. Avoid putting it in places where there is excessive moisture and humidity.
- Do not expose the BTS30 to direct sunlight nor place in areas with high temperature, as it may result in an explosion
- If the BTS30 is not in use for a prolonged period, store in a cool, dry place, free from moisture, humidity and dust
- Do not use abrasive cleaning solvents to clean the BTS30
- Do not expose the BTS30 to contact with sharp objects as this will cause scratching and damage
- Do not stick anything inside the BTS30 as this may damage internal components
- Do not attempt to disassemble the BTS30, as it does not contain serviceable components
- Only charge the BTS30's built-in battery in accordance with the instructions of this user guide
- Do not disassemble the device as it may expose you to dangerous voltages or other risks. Incorrect reassembly can cause electric shock when the BTS30 is subsequently used
- Avoid charging the BTS30 in extremely high or low temperatures
- It's recommended to charge the BTS30 immediately whenever low battery Poweris encountered to prolong durability & standby time of battery