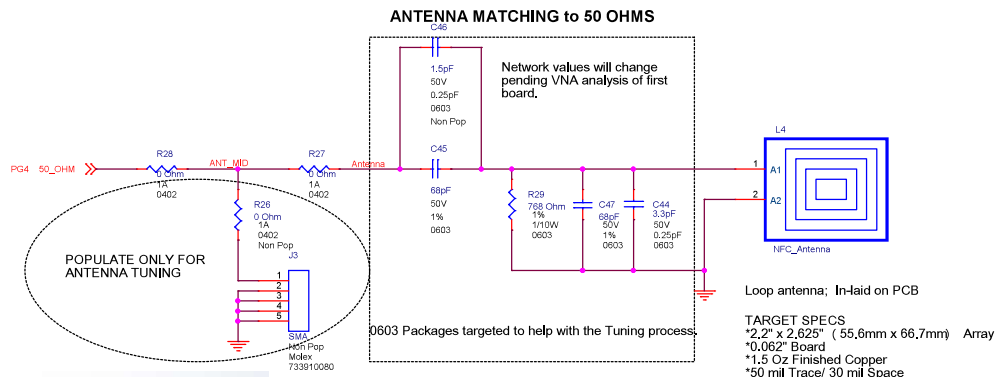
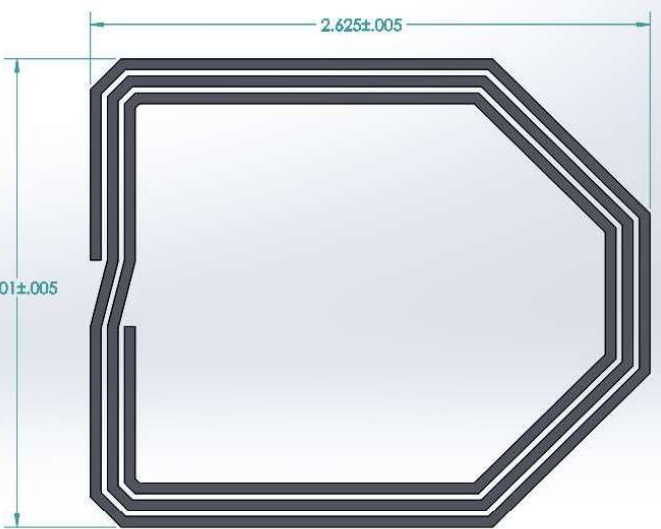


Option: Straight Header  
 TE 5-1814832-1  
 CONN SMA JACK STR 50 OHM PCB  
 \*Multiple Vendors support this footprint



POPULATE ONLY FOR ANTENNA TUNING



- Assumption:
- 1) Metal Enclosure is Shielded
  - 2) Lid aperture is 3.5" x 3.5"
- Re-tuning may be necessary under the following conditions:
- 1) Lid aperture size/geometry change.
  - 2) Ferrite is used on the bottom of the PCBA
  - 3) Enclosure goes from shielded to non-shielded.

Loop antenna; In-laid on PCB  
 TARGET SPECS  
 \*2.2" x 2.625" ( 55.6mm x 66.7mm) Array  
 \*0.062" Board  
 \*1.5 Oz Finished Copper  
 \*50 mil Trace/ 30 mil Space  
 \*3 Turn

MEASURE ANTENNA IMPEDANCE @ 13.56 MHz:  
 Antenna Impedance 0.9 + j105 ( Open Air)

MEASURE ANTENNA IMPEDANCE @ 13.56 MHz:  
 Antenna Impedance 1.7 + j90 ( shield enclosure/3" aperture)

APPROXIMATE ANTENNA LAYOUT  
 \*Intended for illustration purposes. The actual implementation may differ.

See TI App note: SLOA135A.

SCALE:	SIZE:	ABBOTT - PROPRIETARY
1:1 & NOTED	B	
SHEET	DRAWING NUMBER:	REV
5 of 6	60091401	A