
H9 Telit PC Manager User Guide

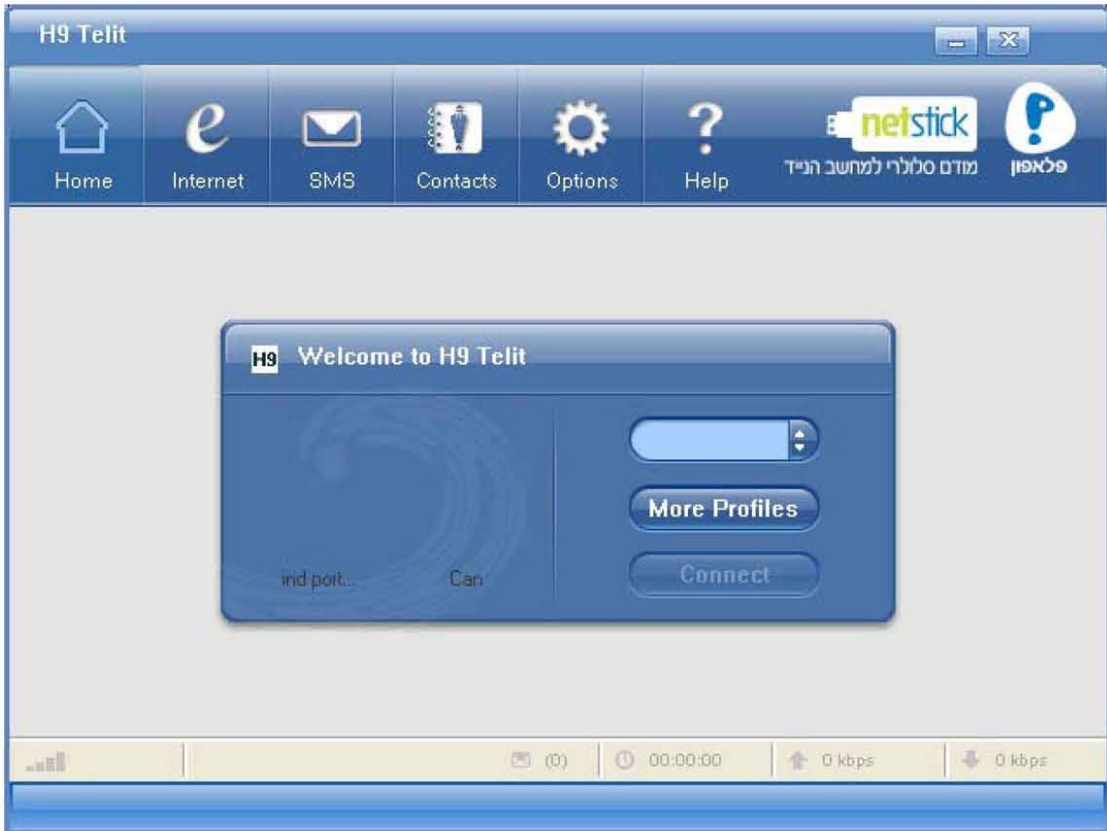
CONTENTS

The main window	3
Data Link.....	3
Establishing a data link	4
Disconnect a data link	4
Profiles (Dialup Configuration).....	4
Add a dialup Configuration.....	4
Default.....	5
Modify a dialup configuration	5
Delete a dialup configuration	5
Restore	5
Internet (Data Flow)	5
SMS.....	6
Read New SMS.....	7
Edit and send SMS.....	7
Reply SMS	8
Forward SMS	8
Re-send SMS.....	9
Delete / Delete All.....	9
Contacts.....	9
Add a new contact.....	10
Modify a contact	10
Send a message to contact.....	11
Delete	11
Options	11
Auto Launch on Startup	12
Auto Minimized	12
Link Auto Reactivation	12
Prompt Before Exit	12
USIM Card Preferred	12
Local Preferred.....	13
Options for SMS	13
1. Change the number of SMS service center	13
2. Change SMS Routing.....	13
3. Validity period of sending SMS	13
Network Options	14
1. Choose the Frequency Band.....	14
2. Select the Network	15
Security Options.....	15
1. Enable / Disable PIN1	15
2. Change PIN1	15
3. Unlock PIN1	16
Sound Options.....	16
Notifying sound for SMS	16
Flow Warning.....	16
1. Display	16
2. Flow Warning.....	17
USSD	17
Version	17

Help Topics	18
Safety Indication	18
FQA & Answers	19
Why the PC Manager always displays "Can not find port..."	19
Why the PC Manager displays "No USIM Card"	19
Why the PC Manager displays "No Service"	19
Failed to send a SMS	20
Failed to connect internet	20
Appendix	21
Light Indications of data card	21


The main window

Here's the main window of data card's PC Manager:



Main menu includes below items: Home, Internet, SMS, Contacts, Options, Help. Make proper configuration to functions and the data card.



Click the button  can access to the web www.pelephone.co.il.

Data Link

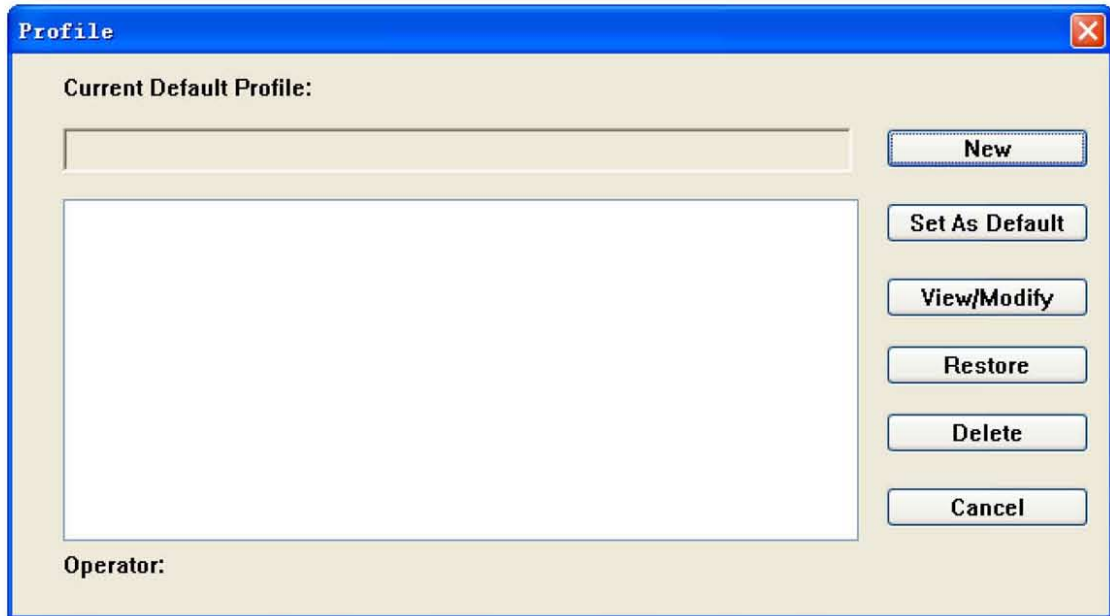
You can establish a dialup data link over GSM/WCDMA via the data card.

The dialup data link requires the coverage of GSM, GPRS, EDGE or WCDMA. In each of

the link, the data card will be connected to a specific phone number.

Establishing a data link

1) Select **More Profiles**,



2) Choose a profile in the list, and then click on “Set As Default”,

3) Click on the button “Connect”, to establish a data link.

Disconnect a data link

To disconnect, Click on the button “Disconnect”.

Profiles (Dialup Configuration)

Add a dialup Configuration

1) Select **More Profiles**;

2) Select “New”, enter the Profile Name and choose a Network in the popup window; setup for the dialup in the advanced options; click on “Finish” to save and close the window;

Each profile depends on the setup settings of the carriers. If the settings of CSD, DNS, PPP and TCP/IP are needed, click on “Advanced Settings” and make proper selections. After

completing, click on “OK” to save and close the window. Refer to Windows’ network properties for these settings.

Default

- 1) Select **More Profiles**;
- 2) Choose a profile in the list, and then click on “Set As Default”.

Modify a dialup configuration

- 1) Select **More Profiles**;
- 2) Choose a profile in the list, and then click on “View/Modify”;
- 3) Make proper modifications;
- 4) Click on “Finish” to save and close the window.

Delete a dialup configuration

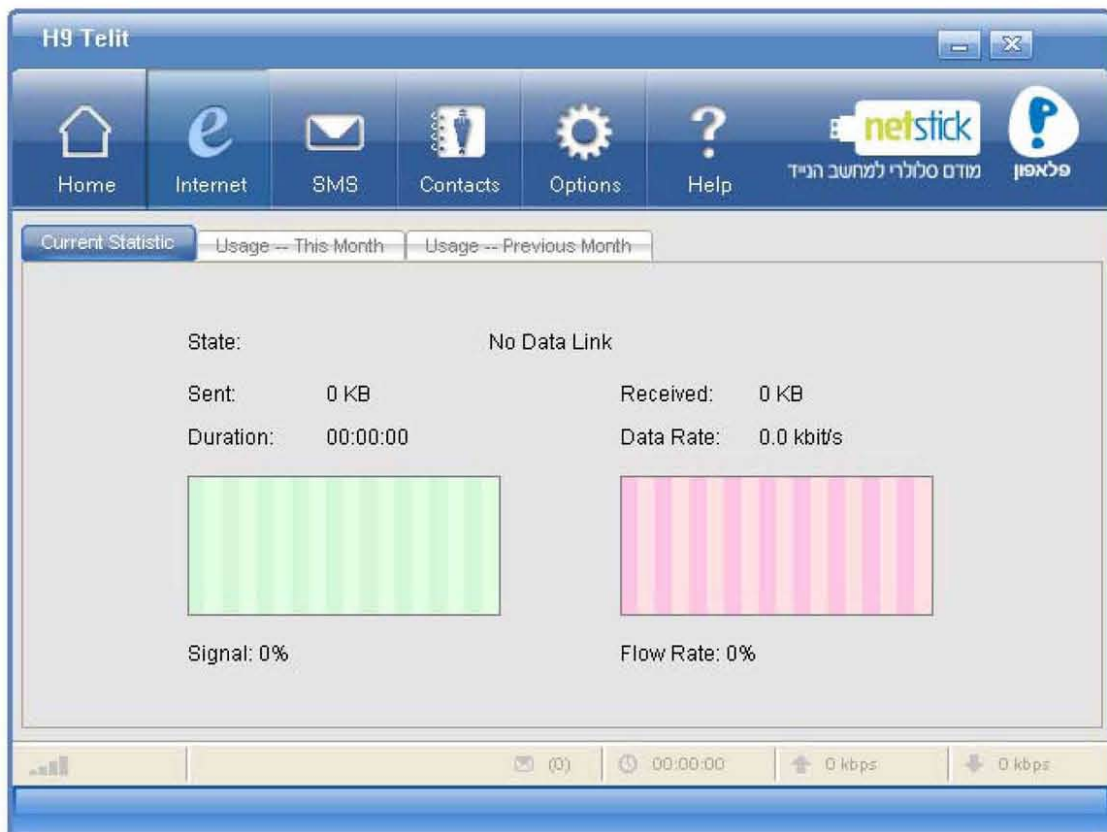
- 1) Select **More Profiles**;
- 2) Choose a profile in the list, and then click on “Delete”;
- 3) In the confirmation box, click on “OK” to proceed.

Restore

- 1) Select **More Profiles**;
- 2) Click on “Restore” for initial settings.

Internet (Data Flow)

To view the data card’s data flow statistics in real time or of current or last month, select “Internet”.



SMS

SMS, or Short Messaging Service, is a value-added service provided by carriers, which allows you send and receive short messages. It requires subscription, so contact your service provider to make sure you are authorized to use SMS.

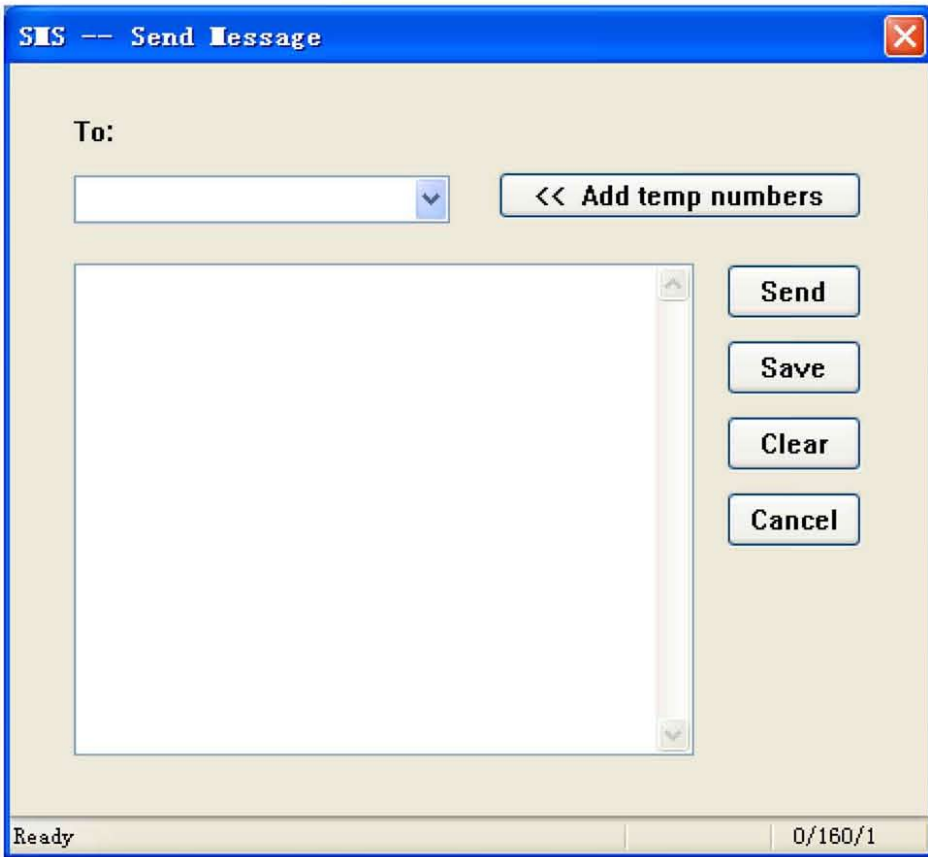
If you are a subscriber, any other people can send short messages through any ways supported by your service provider.

When you're offline, the short messages are stored temporarily on the network. And once you are connected, they will be sent to your USIM card and you will be notified by PC Manager of new messages. If the capacity of SMS is full, you will not be able to receive any new messages unless you remove some of the old messages. When new messages coming as the window is minimized, a message box on the system bar will remind you there are new incoming messages.

In the SMS window, you may:

- Read,
- Edit and send,

3) Edit your short message and enter the phone number, click on “Send”.



In the SMS editing window,

- Select “Add temp numbers” after enter to the number. This phone number will be added into the dropdown list.
- Select the dropdown list to open the phone book and choose a contact.
- Click on “Save” to store the message in the Draft.
- Click on “Clear” to blank all the editing.
- Click on “Cancel” to revoke and close the window.

Reply SMS

- 1) Select “SMS” to open the “Inbox”
- 2) Choose the message and click on “Reply”
- 3) Edit your short message, and then click on “Send”.

Forward SMS

- 1) Select “SMS” to open the “Inbox” or “Outbox”;

-
- 2) Choose the message and click on “Forward”;
 - 3) Enter the forwarded phone number or select one from the dropdown list, and then click on “Send”.

Re-send SMS

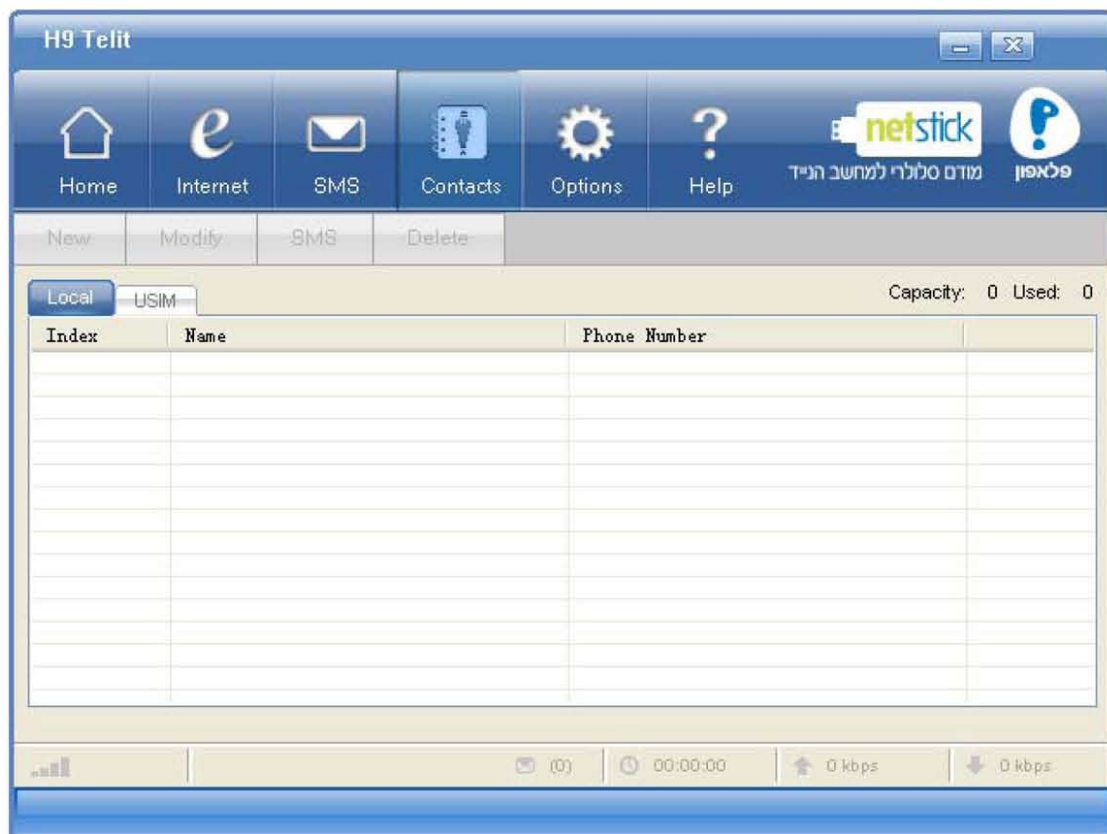
- 1) Select “SMS” to open the “Outbox”;
- 2) Select the message, and then click on “Retry”.

Delete / Delete All

- 1) Select “SMS” to open the “Inbox”, “Outbox” or “Draft”;
- 2) Choose the message(s) and click on “Delete”; Or click on “Delete All” to remove all your messages;
- 3) In the confirmation box, click on “OK” to proceed.

Contacts

Select “Contacts”. There are two tabs – Local and USIM.



- Click on Name or Phone Number to sort either by name or by phone number.
- On the upper right corner shows the total capacity and the used amount. For the USIM tab, the total capacity varies with different USIM cards.

Add a new contact

- 1) Select “Contacts”;
- 2) Click on “New”;
- 3) Enter the name and phone number;
- 4) Click on “OK” to save.

Modify a contact

- 1) Select “Contacts”;
- 2) Choose the contact in the list and click on “Modify”, or double-click the entry;
- 3) Edit the name and phone number;
- 4) Click on “OK” to save.

Send a message to contact

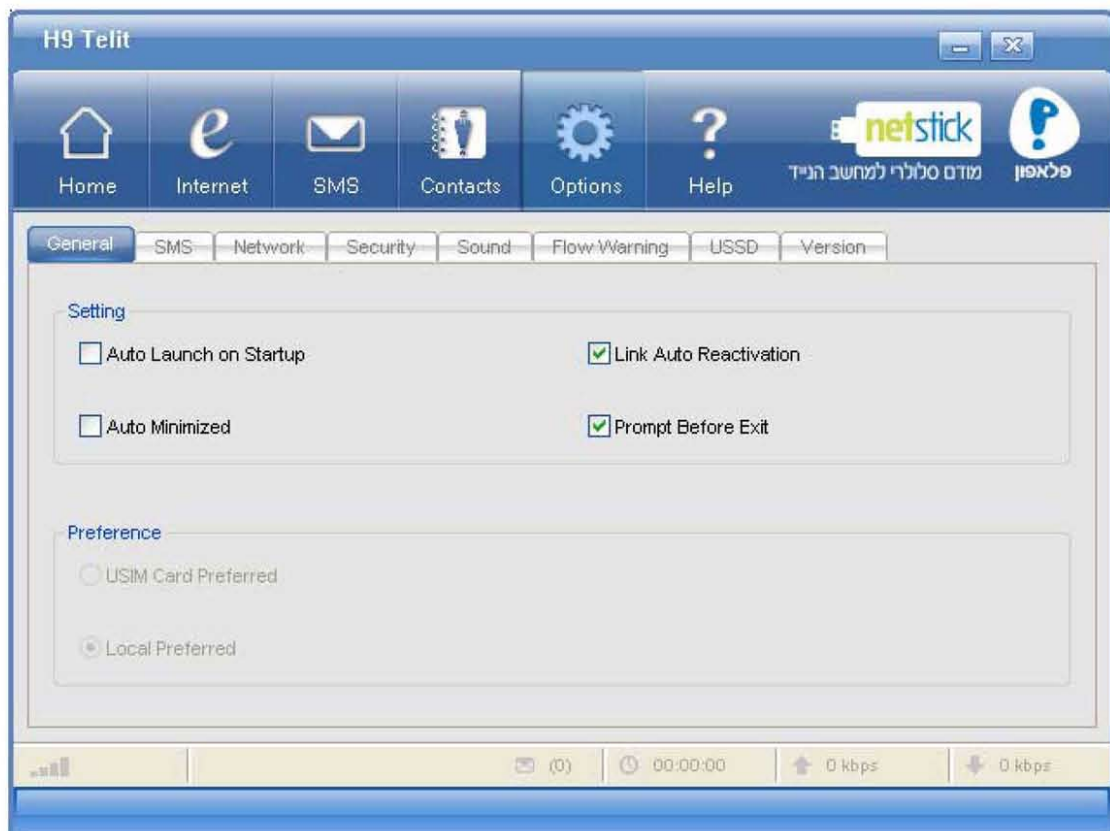
- 1) Select “Contacts”;
- 2) Choose the contact and click on “SMS”;
- 3) Edit your short message, and then click on “Send”.

Delete

- 1) Select “Contacts”;
- 2) Choose the contact and click on “Delete” to remove your contact;
- 3) In the confirmation box, click on “OK” to proceed.

Options

In “Options”, you can set all the necessary features or configure the data card.



Auto Launch on Startup

If selected, PC Manager will come up and running after Windows startup. Otherwise, you have to do it manually (either by clicking on a shortcut on the desktop or from “Start” menu).

- 1) In the main window, select “Options→General”;
- 2) Select the checkbox “Auto Launch on Startup”.

Auto Minimized

If selected, PC Manager will be minimized. You can check the current status on the system bar.

- 1) In the main window, select “Options→General”;
- 2) Select the checkbox “Auto Minimized”.

Link Auto Reactivation

If selected, PC Manager will try to reactive the internet link disconnected by Out Of Service when the service recovers.

- 1) In the main window, select "Options-->General";
- 2) Select the checkbox "Link Auto Reactivation".

Prompt Before Exit

If selected, PC Manager will prompt a message window before exit.

Note: Closing the PC Manager will cause the data card to power off, this may need some seconds usually.

- 1) In the main window, select "Options-->General";
- 2) Select the checkbox "Prompt Before Exit".

USIM Card Preferred

If selected, short messages will be saved into the USIM card first.

- 1) In the main window, select “Options→General”;
- 2) Select the radio button “USIM Card Preferred”.

Local Preferred

If selected, short messages will be saved into the local storage first.

- 1) In the main window, select “Options→General”;
- 2) Select the radio button “Local Preferred”.

Options for SMS

You may:

- Change the SMSC number
- Change the default routing
- Change the valid time of sending SMS

1. Change the number of SMS service center

When a short message is sent, it will be kept in the SMSC until it reaches the receiver. This number is the SMSC that your messages go to, and it can be obtained from the USIM card.

Change the number only under your service provider’s suggestion.

- 1) In the main window, select “Options→SMS”;
- 2) Change the number of “Service Center” per requirement;
- 3) Click on “Apply” to save.

2. Change SMS Routing

SMS Routing is the preferred domain to send SMS. It will be either “CS preferred” (default) or “PS preferred”:

- 1) In the main window, select “Options→SMS”;
- 2) Select “CS preferred” or “PS preferred” in the dropdown list of “Routing” per requirement.

3. Validity period of sending SMS

It is the length of time that your messages will be stored for on the network waiting to be sent. If the receiver cannot receive SMS for disconnection or any other reasons (e.g., the capacity of SMS is full), your message will be saved on the network for the time you specified here. If the valid time has past, the messages won’t be sent.

- 1) In the main window, select “Options→SMS”;
- 2) Select the time unit in “Unit” dropdown list, and time value in “Value”.

Unit	Value
Hours	1 hour, 6 hours, 12 hours
Days	1 day, 2 days, 4 days, 6 days
Weeks	1 week, 2 weeks, 3 weeks, 4 weeks
Maximum	

Network Options

Depending on the region, you may be covered by several networks at the same time. By default, the data card will choose an available network by your account. You may also choose the network from the list in PC Manager while your options are up to your account.

1. Choose the Frequency Band

By default, the data card will pick a Frequency Band automatically, unless the carrier has a special instruction.

- 1) In the main window, select “Options→Network”;
- 2) Select one in “Frequency Band” dropdown list.

Details of each frequency band (FB):

Item	Description
Auto	Auto choose the network and bands
2G 850/1900	The data card is only for 2G (GPRS/EDGE) with GSM850 and GSM1900 bands (mostly in North America)
2G 1900	The data card is only for 2G (GPRS/EDGE) with GSM1900 band (mostly in North America)
2G 900/1800	The data card is only for 2G (GPRS/EDGE) with GSM900 and GSM1900 bands (mostly outside North America)
2G 850	The data card is only for 2G (GPRS/EDGE) with GSM850 band (mostly in North America)
2G 900	The data card is only for 2G (GPRS/EDGE) with GSM900 band (mostly in Europe and Asia)
All GSM	The data card is only for 2G (GPRS/EDGE) with all bands
3G 2100	The data card is only for 3G (WCDMA/HSDPA) with WCDMA2100 band (mostly in Europe, Asia and Australia)
3G 2100 2G 900/1800	The data card is only for WCDMA2100, GSM900 and GSM1800 bands (mostly outside North America)
3G 850/1900 2G 850/1900	The data card is only for WCDMA850, WCDMA1900, GSM850 bands and GSM1900 (mostly in North America)
3G 850/1900	The data card is only for 3G (WCDMA/HSDPA) with WCDMA850 and WCDMA1900 bands (mostly in North America)

2. Select the Network

- 1) In the main window, select “Options→Network”;
- 2) Select “Automatic” or “Manual” in “Network Selection”;
 - Automatic – the data card will choose a proper network;
 - Manual – users will pick the network in PC Manager.
 -

Security Options

USIM card is a microchip containing important information which will be used by the network to identify you ID for available services.

There are two PINs in the card:

- PIN1 is to enable/disable the security function of USIM card, preventing unauthorized use of your account if the USIM card is lost or stolen.
- PIN2 is to enable/disable Fixed Dialing Numbers, restricting outbound calls with limited phone numbers.

You have limited times (usually 3) of entering PIN1 or PIN2. If you have incorrect inputs for more than the limited times, the PIN will be locked up.

1. Enable / Disable PIN1

PIN1 is to prevent unauthorized users from using your USIM card. Once your USIM card has been protected by activated PIN1, a correct PIN1 must be entered before using the USIM card in a data card or other devices (such as a mobile phone).

Contact your carrier for PIN1 before you enable this feature.

Once the USIM card activated, PIN1 is required whenever you insert or restart your data card.

- 1) In the main window, select “Options→Security”;
- 2) If PIN1 is now disabled, click on “Enable” and enter the PIN1; Or if PIN1 is already enabled, click on “Disable” and enter the PIN1 to disable the feature.

2. Change PIN1

- 1) In the main window, select “Options→Security”;
- 2) If PIN1 is now disabled, enable it;
- 3) Click on “Change”;
- 4) Enter the old PIN1;

-
- 5) Enter the new PIN1;
 - 6) Retype the new PIN1 to confirm;
 - 7) Click on “OK” to save.

3. Unlock PIN1

- 1) Obtain the PUK1 code from your carrier;
- 2) Enter the PUK1 and click on “OK”;
- 3) Enter the new PIN1;
- 4) Retype the new PIN1 to confirm;
- 5) Confirm the change

Sound Options

In “Options”, the “Sound” page contains the settings of notifying sound for SMS. And you can also preview your sound after settings.

Notifying sound for SMS

Pick your favorite music as notifying sound for incoming messages, only the wav format is supported.

- 1) In the main window, select “Options→Sound”;
- 2) Choose one in the “Message Ring”, or click on “Select from” to locate a music file in your PC as your notifying sound.

Flow Warning

In “Options”, “Flow Warning” contains settings of displaying contents and mode of flow statistics and setting of threshold for alert.

1. Display

The display of statistics on flow can be set by data or by time:

- 1) In the main window, select “Options→Flow Warning”;
- 2) Select the checkbox “Warn when a limit is approaching” to activate;

-
- 3) To display by data, select “Data Limits (MB)” and enter the value of data range; or to display by time, select “Time Limits (Hours)” and enter the value of time range;
 - 4) In the dropdown list “Beginning day of month to calculate flow”, choose the starting date of the statistics;
 - 5) Click on “Apply” to save.

- To clear all the records of flow statistics, click on “Delete History” and confirm to proceed.

2. Flow Warning

When the data flow or network connection time has reached into some pre-set range, a notifying message will be popped up to alert.

- 1) In the main window, select “Options→Flow Warning”;
- 2) In the dropdown list “First warning point (%)”, select one for the first-time notification;
- 3) In the dropdown list “Second warning point (%);, select one for the second-time notification;
- 4) Click on “Apply” to save.

USSD

To view USSD, select " Options > USSD " in the main window.

Your USIM card may contain the USSD function.

- 1) In the main window, select" Options > USSD ";
- 2) Input the USSD command. For details, please check with your service provider;
- 3) Click on "Send" to send the USSD command then the USSD message will be displayed.

Version

To view versions, select Options > Version in the main window.

Help Topics

Through Help Topics, you can learn the details of each menu in PC Manager for a quick understanding of functions of data card.

To read, select “Help” in the main window.

Safety Indication

Remove the data card

- 1) Close PC Manager;
- 2) Click on the icon “Remove the hardware safely” on the system bar to stop the data card.
- 3) Remove the data card

Note

The highest SAR value for this model equipment when tested was 0.738 W/kg for use close to the body. This value is evaluated under the body worn distance 5mm.

For limiting the radio waves exposure, it is recommended to reduce the mobile phone call duration or to use a headset. The purpose of those precautions is to take the mobile phone away from the head and the body.

This device complies with part 15 of the FCC Rules. Operation is subject to the condition that this device does not cause harmful interference.

Changes or modifications not expressly approved by the manufacturer could void the user’s authority to operate the equipment.

NOTE: This equipment has been tested and found to comply with the limits for a Class B digital device, pursuant to part 15 of the FCC Rules. These limits are designed to provide reasonable protection against harmful interference in a residential installation. This equipment generates, uses and can radiate radio frequency energy and, if not installed and used in accordance with the instructions, may cause harmful interference to radio communications. However, there is no guarantee that interference will not occur in a particular installation. If this equipment does cause harmful interference to radio or television reception, which can be determined by turning the equipment off and on, the user is encouraged to try to correct the interference by one or more of the following measures:

- Reorient or relocate the receiving antenna.

-
- Increase the separation between the equipment and receiver.
 - Connect the equipment into an outlet on a circuit different from that to which the receiver is connected.
 - Consult the dealer or an experienced radio/ TV technician for help.

FQA & Answers

If you have the following problems when using the data card, you can try the following resolutions. If the problem still exists, please contact the data card's technical support.

Why the PC Manager always displays "Can not find port..."

- 1) The data card isn't inserted properly, please reinsert the data card again.
- 2) The data card driver is not installed or has problems, please check the Windows "Device Manager", reinsert the data card or reinstall the driver, restart Windows if necessary.
- 3) On some version Vista system, you may need to turn off the "User Account Control(UAC)" function. Please select the Windows "Control Panel"/"User Account"/"Enable/Disable User Account Control" and turn off the function.
- 4) On some system, you may need to reinstall the drivers after changing the USB port.

Why the PC Manager displays "No USIM Card"

- 1) the USIM card isn't inserted properly, such as inserted reverse, please insert the USIM card correctly again.
- 2) the USIM card was corrupted or unsupported.

Why the PC Manager displays "No Service"

- 1) There's no GSM or WCDMA network coverage or the signal is poor, please change to a place there's good network coverage or use the USB cord.

-
- 2) Sometimes the data card need more time to acquire the network, eg. the network coverage is complex, please wait a little longer.
 - 3) The network setting is wrong, such as set to only use the 3G frequency band at a place where has only 2G network. Refer to the "Network Options".
 - 4) The USIM account is stopped.

Failed to send a SMS

- 1) The SMS center is wrong, please set a correct SMS center number in the "SMS service center".
- 2) Other network reason, such as network is busy, please try later.

Failed to connect internet

- 1) The USIM account is without data service.
- 2) The internet profile is not correct, e.g. the APN (Access Point Name) is wrong. Please set a correct internet profile, refer to the "Profiles (Dialup Configuration)".
- 3) Windows' error or modem error, please check the error code in modem log.txt, this file is in the folder where the PC Manager is installed. For more information, please refer to the Windows online help.
- 4) Network error, please check the error code in modem log.txt, this file is in the folder where the PC Manager is installed. For more information, please refer to the Windows online help.

Appendix

Light Indications of data card

Indicator	Meaning
green light keeps flashing	When data card enrolls in 2G network(GPRS/EDGE),not transmitting data
green	When data card has connected with 2G network(GPRS/EDGE)
blue light keeps flashing	When data card enrolls in 3G network(WCDMA/HSDPA/HSUPA),not transmitting data
blue	When data card has connected with 3G network(WCDMA/HSDPA/HSUPA)
red	Warning, for example data card doesn't find USIM card