

# SUPPORT INQUIRIES

Link to [www.telit.com](http://www.telit.com) and contact our technical support team for any questions related to technical issues.

## LN940 WWAN M.2 Engineering User Guide

Rev. 1.0 – 2017-06-23

[www.telit.com](http://www.telit.com)



Telit Communications S.p.A.  
Via Stazione di Prosecco, 5/B  
I-34010 Sgonico (Trieste), Italy

Telit IoT Platforms LLC  
5300 Broken Sound Blvd, Suite 150  
Boca Raton, FL 33487, USA

Telit Wireless Solutions Inc.  
3131 RDU Center Drive, Suite 135  
Morrisville, NC 27560, USA

Telit Wireless Solutions Co., Ltd.  
8th Fl., Shinyoung Securities Bld.  
6, Gukjegeumyung-ro8-gil, Yeongdeungpo-gu  
Seoul, 150-884, Korea

Telit Wireless Solutions Ltd.  
10 Habarzel St.  
Tel Aviv 69710, Israel

Telit Wireless Solutions  
Tecnologia e Servicos Ltda  
Avenida Paulista, 1776, Room 10.C  
01310-921 São Paulo, Brazil

Telit reserves all rights to this document and the information contained herein. Products, names, logos and designs described herein may in whole or in part be subject to intellectual property rights. The information contained herein is provided "as is". No warranty of any kind, either express or implied, is made in relation to the accuracy, reliability, fitness for a particular purpose or content of this document. This document may be revised by Telit at any time. For most recent documents, please visit [www.telit.com](http://www.telit.com)

Copyright © 2016, Telit

SPECIFICATIONS ARE SUBJECT TO CHANGE WITHOUT NOTICE

## **NOTICE**

While reasonable efforts have been made to assure the accuracy of this document, Telit assumes no liability resulting from any inaccuracies or omissions in this document, or from use of the information obtained herein. The information in this document has been carefully checked and is believed to be reliable. However, no responsibility is assumed for inaccuracies or omissions. Telit reserves the right to make changes to any products described herein and reserves the right to revise this document and to make changes from time to time in content hereof with no obligation to notify any person of revisions or changes. Telit does not assume any liability arising out of the application or use of any product, software, or circuit described herein; neither does it convey license under its patent rights or the rights of others.

It is possible that this publication may contain references to, or information about Telit products (machines and programs), programming, or services that are not announced in your country. Such references or information must not be construed to mean that Telit intends to announce such Telit products, programming, or services in your country.

## **COPYRIGHTS**

This instruction manual and the Telit products described in this instruction manual may be, include or describe copyrighted Telit material, such as computer programs stored in semiconductor memories or other media. Laws in the Italy and other countries preserve for Telit and its licensors certain exclusive rights for copyrighted material, including the exclusive right to copy, reproduce in any form, distribute and make derivative works of the copyrighted material. Accordingly, any copyrighted material of Telit and its licensors contained herein or in the Telit products described in this instruction manual may not be copied, reproduced, distributed, merged or modified in any manner without the express written permission of Telit. Furthermore, the purchase of Telit products shall not be deemed to grant either directly or by implication, estoppel, or otherwise, any license under the copyrights, patents or patent applications of Telit, as arises by operation of law in the sale of a product.

## **COMPUTER SOFTWARE COPYRIGHTS**

The Telit and 3rd Party supplied Software (SW) products described in this instruction manual may include copyrighted Telit and other 3rd Party supplied computer programs stored in semiconductor memories or other media. Laws in the Italy and other countries preserve for Telit and other 3rd Party supplied SW certain exclusive rights for copyrighted computer programs, including the exclusive right to copy or reproduce in any form the copyrighted computer program. Accordingly, any copyrighted Telit or other 3rd Party supplied SW computer programs contained in the Telit products described in this instruction manual may not be copied (reverse engineered) or reproduced in any manner without the express written permission of Telit or the 3rd Party SW supplier. Furthermore, the purchase of Telit products shall not be deemed to grant either directly or by implication, estoppel, or otherwise, any license under the copyrights, patents or patent applications of Telit or other 3rd Party supplied SW, except for the normal non-exclusive, royalty free license to use that arises by operation of law in the sale of a product.

# USAGE AND DISCLOSURE RESTRICTIONS

## I. License Agreements

The software described in this document is the property of Telit and its licensors. It is furnished by express license agreement only and may be used only in accordance with the terms of such an agreement.

## II. Copyrighted Materials

Software and documentation are copyrighted materials. Making unauthorized copies is prohibited by law. No part of the software or documentation may be reproduced, transmitted, transcribed, stored in a retrieval system, or translated into any language or computer language, in any form or by any means, without prior written permission of Telit

## III. High Risk Materials

Components, units, or third-party products used in the product described herein are NOT fault-tolerant and are NOT designed, manufactured, or intended for use as on-line control equipment in the following hazardous environments requiring fail-safe controls: the operation of Nuclear Facilities, Aircraft Navigation or Aircraft Communication Systems, Air Traffic Control, Life Support, or Weapons Systems (High Risk Activities"). Telit and its supplier(s) specifically disclaim any expressed or implied warranty of fitness for such High Risk Activities.

## IV. Trademarks

TELIT and the Stylized T Logo are registered in Trademark Office. All other product or service names are the property of their respective owners.

## V. Third Party Rights

The software may include Third Party Right software. In this case you agree to comply with all terms and conditions imposed on you in respect of such separate software. In addition to Third Party Terms, the disclaimer of warranty and limitation of liability provisions in this License shall apply to the Third Party Right software.

TELIT HEREBY DISCLAIMS ANY AND ALL WARRANTIES EXPRESS OR IMPLIED FROM ANY THIRD PARTIES REGARDING ANY SEPARATE FILES, ANY THIRD PARTY MATERIALS INCLUDED IN THE SOFTWARE, ANY THIRD PARTY MATERIALS FROM WHICH THE SOFTWARE IS DERIVED (COLLECTIVELY "OTHER CODE"), AND THE USE OF ANY OR ALL THE OTHER CODE IN CONNECTION WITH THE SOFTWARE, INCLUDING (WITHOUT LIMITATION) ANY WARRANTIES OF SATISFACTORY QUALITY OR FITNESS FOR A PARTICULAR PURPOSE.

NO THIRD PARTY LICENSORS OF OTHER CODE SHALL HAVE ANY LIABILITY FOR ANY DIRECT, INDIRECT, INCIDENTAL, SPECIAL, EXEMPLARY, OR CONSEQUENTIAL DAMAGES (INCLUDING WITHOUT LIMITATION LOST PROFITS), HOWEVER CAUSED AND WHETHER MADE UNDER CONTRACT, TORT OR OTHER LEGAL THEORY, ARISING IN ANY WAY OUT OF THE USE OR DISTRIBUTION OF THE OTHER CODE OR THE EXERCISE OF ANY RIGHTS GRANTED UNDER EITHER OR BOTH THIS LICENSE AND THE LEGAL TERMS APPLICABLE TO ANY SEPARATE FILES, EVEN IF ADVISED OF THE POSSIBILITY OF SUCH DAMAGES.



# APPLICABILITY TABLE

## PRODUCTS

■ ■ LN940A11

■ ■ LN940A9



# Contents

## NOTICE 2

## COPYRIGHTS ..... 2

## COMPUTER SOFTWARE COPYRIGHTS ..... 2

## USAGE AND DISCLOSURE RESTRICTIONS ..... 3

## APPLICABILITY TABLE ..... 5

## CONTENTS ..... 7

### 1. INTRODUCTION..... 9

#### 1.1. Scope..... 9

#### 1.2. Audience ..... 9

#### 1.3. Contact Information, Support ..... 9

### 2. OVERVIEW..... 10

#### 2.1. M.2 Overview ..... 10

##### 2.1.1. General Features ..... 10

##### 2.1.2. Carrier Aggregation..... 14

#### 2.2. M.2 WWAN Module – System Block Diagram ..... 16

#### 2.3. Host Interface Signals ..... 17

### 3. WWAN M.2 INTERFACE DETAILS..... 22

#### 3.1. Interprocessor Communications (IPC)..... 22

##### 3.1.1. USB 2.0 High-Speed ..... 22

##### 3.1.2. USB 3.0 Super-Speed ..... 23

#### 3.2. USIM Interface ..... 24

##### 3.2.1. SIM Design Recommendations ..... 24

#### 3.3. System Control Interface ..... 26

##### 3.3.1. Power On & Reset ..... 26

##### 3.3.2. Host Radio Disable Operation ..... 27

##### 3.3.3. LED Interface – Status Indicator..... 29

##### 3.3.4. Wake on WWAN Signal ..... 30

##### 3.3.5. Dynamic Power Reduction ..... 31

#### 3.4. Tunable Antenna Interface ..... 32

#### 3.5. In-Device Coexistence Interface..... 33

#### 3.6. Power Supply Interface ..... 34

3.7.	Configuration Pins.....	34
3.8.	Antenna Interface.....	35
<b>4.</b>	<b>OPERATING ENVIRONMENT.....</b>	<b>36</b>
<b>5.</b>	<b>POWER DELIVERY REQUIREMENTS .....</b>	<b>37</b>
5.1.	Electrical Parameters (3.3 V Power Supply).....	37
5.2.	Power Consumption.....	38
<b>6.</b>	<b>OTHER REQUIREMENTS .....</b>	<b>39</b>
6.1.	Conducted Transmit Power .....	39
6.2.	Receiver Sensitivity.....	39
6.3.	Antenna Recommendations .....	41
6.4.	GNSS Sensitivity.....	42
<b>7.</b>	<b>WWAN CARD TYPE 3042.....</b>	<b>43</b>
7.1.	Mechanical Dimension .....	43
7.2.	LN940 WWAN M.2 Module Assembly .....	44
7.3.	Antenna Connector Assembly .....	45
7.4.	Antenna Connector Locations .....	46
<b>8.</b>	<b>SAFETY RECOMMENDATIONS .....</b>	<b>48</b>
8.1.	READ CAREFULLY .....	48
<b>9.</b>	<b>ACRONYMS .....</b>	<b>49</b>
<b>10.</b>	<b>DOCUMENT HISTORY.....</b>	<b>51</b>



# 1. INTRODUCTION

## 1.1. Scope

The document covers the technical features of and design guideline for Telit LN940 WWAN M.2 Module. It also indicates application interface, hardware, software, reliability and mechanical specification.

## 1.2. Audience

This document is intended to review by engineering designers, and product managers.

## 1.3. Contact Information, Support

For general contact, technical support services, technical questions and report documentation errors contact Telit Technical Support at:

- TS-EMEA@telit.com
- TS-AMERICAS@telit.com
- TS-APAC@telit.com
- TS-SRD@telit.com

Alternatively, use:

<http://www.telit.com/support>

For detailed information about where you can buy the Telit modules or for recommendations on accessories and components visit:

<http://www.telit.com>

Our aim is to make this guide as helpful as possible. Keep us informed of your comments and suggestions for improvements.

Telit appreciates feedback from the users of our information.

## 2. OVERVIEW

This chapter provides an overview of standard features of Telit LN940 WWAN M.2 Module.

### 2.1. M.2 Overview

LN940 WWAN M.2 module is the next generation cellular LTE product, providing the connectivity on the world's fastest LTE networks in the extensive coverage of worldwide LTE bands, with unprecedented network performance.

The WWAN M.2 module is in compliance of 3GPP releases 9, 10, 11, and 12, in which the part of LTE advance carrier aggregation (2x and 3x in the downlink) and high order modulation (up to 256 QAM) are supported.

#### 2.1.1. General Features

**Table 2.1.1-1 LN940 Feature Summary**

Feature	Description	Additional Information
<b>Modem Chipset</b>	Qualcomm MDM9240	
<b>Carrier Aggregation</b>	2CC & 3CC DL CA	Up to inter-band 3CC DL CA
<b>LTE Category</b>	Cat6/Cat9 and up to Cat11 @60Mhz	
<b>Physical</b>	PCI Express M.2 Module	
<b>Mechanical</b>	M2. Card Type 3042 Slot B Pin counts : 75	30mm x 42mm x 2.3mm Max Height=2.38mm (0.08mm PCB tolerance added)
<b>Weight</b>	6 grams	
<b>Operating Voltage</b>	3.135V ~ 4.4V; Single VCC Supply	
<b>Operating Temperature</b>	-40°C to +85 °C	Please refer to details in Chapter 7

<b>USIM</b>	Off-board USIM connector Supported
<b>RX Diversity</b>	ALL LTE and UMTS Bands Supported
<b>GNSS</b>	GPS: L1 (1575.42MHz)
	GLONASS: L1 (1602MHz)
	Beidou (1561.098MHz)
<b>Data Service</b>	LTE CAT 11: 600Mbps DL/50Mbps UL
	LTE CAT 9: 450Mbps DL/50 Mbps UL
	LTE CAT 6: 300Mbps DL/50Mbps UL
	DC-HSPA+: 42Mbps DL/5.76Mbps UL
	HSPA+: 21Mbps DL/5.76Mbps UL
	WCDMA PS 384Kbps DL/384Kbps UL
	WCDMA CS 64Kbps DL/64Kbps UL

There are 22 LTE and 7 UMTS bands supported by Telit LN940 WWAN M.2 Module.

**Table 2.1.1 -2 Supported LN940 LTE Bands**

<b>E-UTRA BAND</b>	<b>Frequency (Mhz)</b>	<b>Uplink Frequency UE Receive (Mhz)</b>	<b>Downlink Frequency UE Receive (Mhz)</b>	<b>Duplex Mode</b>
<b>1</b>	2100	1920-1980	2110-2170	FDD
<b>2</b>	1900	1850-1910	1930-1990	FDD
<b>3</b>	1800	1710-1785	1805-1880	FDD
<b>4</b>	1700	1710-1755	2110-2155	FDD
<b>5</b>	850	824-849	869-894	FDD
<b>7</b>	2600	2500-2570	2620-2690	FDD
<b>8</b>	900	880-915	925-960	FDD
<b>12</b>	700	699-716	729-746	FDD
<b>13</b>	700	777-787	746-756	FDD
<b>17</b>	700	704-716	734-746	FDD
<b>18</b>	850	815-830	860-875	FDD
<b>19</b>	850	830-845	875-890	FDD
<b>20</b>	800	832-862	791 – 821	FDD
<b>21</b>	1500	1477.9-1462.9	1495.9-1510.9	FDD
<b>25</b>	1900	1850-1915	1930-1995	FDD

<b>26</b>	850	814-849	859-894	FDD
<b>28</b>	700	703-748	758-803	FDD
<b>29</b>	700	N/A	717-728	FDD
<b>30</b>	2300	2305-2315	2350-2360	FDD
<b>38</b>	2600	2570-2620		TDD
<b>39</b>	1900	1880-1920		TDD
<b>40</b>	2300	2300-2400		TDD
<b>41</b>	2500	2496-2690		TDD
<b>66</b>	1700	1710-1780	2110-2200	FDD

**Table 2.1.1 -2 Supported LN940 UMTS Bands**

<b>UTRA BAND</b>	<b>Frequency (Mhz)</b>	<b>Uplink Frequency UE Receive (Mhz)</b>	<b>Downlink Frequency UE Receive (Mhz)</b>	<b>Duplex Mode</b>
<b>1</b>	2100	1920-1980	2110-2170	FDD
<b>2</b>	1900	1850-1910	1930-1990	FDD
<b>4</b>	1700	1710-1755	2110-2155	FDD
<b>5</b>	850	824-849	869-894	FDD
<b>6</b>	800	830-840	875-885	FDD
<b>8</b>	900	880-915	925-960	FDD
<b>19</b>	850	830-845	875-890	FDD

### 2.1.2. Carrier Aggregation

With the LTE-A carrier aggregation and high order modulation scheme Telit LN940 WWAN M.2 module is designed to run on the world's fastest LTE networks. In the following tables there are seventy 2CC and sixty-four 3CC configurations shown in inter-band, and intra-band CA types in single duplex (FDD only) and in hybrid duplex (FDD+TDD) modes.

**Table 2.1.2-1 Two Carrier Component Carrier Aggregation Configurations (Downlink)**

Region	Carrier	2CC DL CA Combinations
<b>North America</b>	AT&T, VZW, Sprint, TMO	B2+B2, B2+B4, B2+B5, B2+B12, B2+B13, B2+B17, B2+B29, B2+B30, B4+B4, B4+B5, B4+B7, B4+B12, B4+B13, B4+B17, B4+B29, B4+B30, B5+B30, B12+B12, B12+B30, B25+B25, B25+B26, B25+B41, B26+B41, B29+B30, B41+B41, B2+B66, B5+B66, B12+B66, B13+B66, B66+B66, B29+B66, B30+B66
<b>Korea</b>	SKT, KT, LGU+	B1+B5, B1+B3, B1+B7, B3+B5, B3+B8, B5+B7, B3+B7, B7+B7
<b>Japan</b>	KDDI, Docomo, Softbank	B1+B3, B1+B8, B1+B18, B1+B19, B1+B26, B3+B19, B19+B21, B41+B41
<b>EU</b>	Various	B1+B20, B3+B3, B3+B7, B3+B20, B3+B38, B7+B7, B7+B8, B7+B20, B38+B38
<b>China</b>	CMCC, CTCC, CUCC	B1+B3, B1+B26, B3+B26, B3+B40, B39+B39, B39+B41, B40+B40, B41+B41
<b>Australia/SEA/LA</b>	Telstra, Optus	B1+B3, B1+B7, B1+B28, B3+B8, B3+B28, B5+B7, B5+B40, B7+B8, B7+B28

**Table 2.1.2-1 Three Carrier Component Carrier Aggregation Configurations**

Region	Carrier	3CC DL CA Combinations
<b>North America</b>	AT&T, VZW, Sprint, TMO	B2+ B2+ B2, B2 + B2 + B12, B2 +B2+B13, B2+B4+B4, B2+B4+B5, B2+B4 +B12, B2+B4+B13, B2+ B4 + B29, B2+ B5+B30, B2+B12+B12, B2+B12+ B30, B2+B29+B30, B4+B4+B5, B4+B4+B7, B4+B4+B12, B4+B4 +B13, B4+ B5 + B30, B4+B12+B12, B4+B12+B30, B4+B29+ B30, B25+B26+B41, B25+B41+B41, B26+B41+B41, B41+B41+B41, B13+B66+B2, B12+B66+B66, B13+B66+B66, B5+B66+B2, B5+B66+B66, B66+B66+B2, B66+B66+B66
<b>Korea</b>	SKT, KT, LGU+	B1+B3+B5, B1+B7+B7, B1+B3+B8, B1+B5+B7, B3+B5+B7, B1+B7+B28, B3+B7+B8, B3+B7+B7, B5+B7+B7
<b>Japan</b>	KDDI, Docomo, Softbank	B1+B3+B19, B1+B3+B28, B1+B41+B41, B41+B41+B41
<b>EU</b>	Various	B1+B3+B20, B1+B7+B20, B3+B3+B7, B3+B3+B20, B3+B7+B20, B3+B7+B7, B3+B20+B38, B3+B38+B38
<b>China</b>	CMCC, CTCC, CUCC	B1+B3+B3, B1+B3+B26, B1+B3+B41, B3+B40+B40, B39+B39+B41, B39+B41+B41, B40+B40+B40, B41+B41+B41
<b>Australia/SEA/LA</b>	Telstra, Optus	B3+B3+B5, B3+B3+B8, B3+B7+B7, B3+B7+B28, B7+B7+B28, B3+B40+B40, B28+B40+B40, B40+B40+B40

## 2.2. M.2 WWAN Module – System Block Diagram



### 2.3. Host Interface Signals

Telit LN940 WWAN M.2 is the PCIe M.2 standard compliant 3042 Slot B module. The main function and basic requirement of 75 pins are introduced in the following table.

**Table 2.3-1 Host Interface Summary**

Pin	Signal Name	I/O	Description	Supply
1	CONFIG_3	O		
2	Power Supply	I		3.3V
3	GND			
4	Power Supply	I		3.3V
5	GND			
6	FULL_CARD_POWER_OFF#	I		1.8V/3.3V
7	USB_D+	IO		
8	W_DISABLE1#	I		3.3V
9	USB_D-	IO		
10	LED#	O	Open Drain, Active Low@40mA, indicating LED ON	
11	GND			
12			SLOT KEY	
13			SLOT KEY	

<b>14</b>		SLOT KEY	
<b>15</b>		SLOT KEY	
<b>16</b>		SLOT KEY	
<b>17</b>		SLOT KEY	
<b>18</b>		SLOT KEY	
<b>19</b>		SLOT KEY	
<b>20</b>	GPIO_5 AUDIO_0	IO	1.8V
<b>21</b>	CONFIG_0	O	
<b>22</b>	GPIO_6 AUDIO_1	IO	1.8V
<b>23</b>	GPIO_3 WoWWAN#	O	1.8V
<b>24</b>	GPIO_7 AUDIO_2	IO	1.8V
<b>25</b>	Dynamic Power Reduction	I	3.3V
<b>26</b>	W_DISABLE2#	I	3.3V
<b>27</b>	GND	Pin	
<b>28</b>	GPIO_8 AUDIO_3	IO	1.8V
<b>29</b>	USB 3.0 TX-	O	
<b>30</b>	UIM_Reset	O	
<b>31</b>	USB 3.0 TX+	O	
<b>32</b>	UIM_CLK	O	
<b>33</b>	GND	Pin	

<b>34</b>	UIM_DATA	IO	
<b>35</b>	USB 3.0 RX-	I	
<b>36</b>	UIM_PWR	Pout	
<b>37</b>	USB 3.0 RX+	I	
<b>38</b>	Not Connected		
<b>39</b>	GND	Pin	
<b>40</b>	GNSS_SCL	I/O	Reserved
<b>41</b>	PETn0		Reserved, Disabled by Default
<b>42</b>	GPIO_1 GNSS_SDA		Reserved
<b>43</b>	PETp0		Reserved, Disabled by Default
<b>44</b>	GPIO_2 GNSS_IRQ		Reserved
<b>45</b>	GND		
<b>46</b>	GPIO_3 SYSCLK		Reserved
<b>47</b>	PERn0		Reserved, Disabled by Default
<b>48</b>	GPIO_4 TX_BLANKING		
<b>49</b>	PERp0		Reserved, Disabled by Default
<b>50</b>	PERST#		Reserved, Disabled by Default

<b>51</b>	GND	
<b>52</b>	CLKREQ#	Reserved, Disabled by Default
<b>53</b>	REFCLKN	Reserved, Disabled by Default
<b>54</b>	PEWAKE#	Reserved, Disabled by Default
<b>55</b>	REFCLKP	Reserved, Disabled by Default
<b>56</b>	MIPI_CLK	
<b>57</b>	GND	
<b>58</b>	MIPI_DATA	
<b>59</b>	ANTCTL0	O
<b>60</b>	COEX3	IO
<b>61</b>	ANTCTL1	O
<b>62</b>	COEX_RXD	I
<b>63</b>	ANTCTL2	O
<b>64</b>	COEX_TXD	O
<b>65</b>	ANTCTL3	O
<b>66</b>	SIM_DETECT	I
<b>67</b>	RESET#	I

<b>68</b>	Not Connected		
<b>69</b>	CONFIG_1		
<b>70</b>	Power Supply	Pin	3.3V
<b>71</b>	GND		
<b>72</b>	Power Supply	Pin	
<b>73</b>	GND		
<b>74</b>	Power Supply	Pin	
<b>75</b>	CONFIG_2		

### 3. WWAN M.2 INTERFACE DETAILS

#### 3.1. Interprocessor Communications (IPC)

The LN940 WWAN M.2 Module provides two interfaces on the M.2 host interfaces that support Interprocessor Communications (IPC).

##### 3.1.1. USB 2.0 High-Speed

The USB controller is compliant to USB2.0 specification and with the Link Power Management (LPM). LPM introduces the sleep state (L1) which significantly reduces the transitional latencies between the defined power states.

**Table 3.1.1-1 USB 2.0 Interface**

Signal Name	Pin	Voltage Level	Description
USB_D+	7	Per USB2.0 Specification	USB Data Plus
USB_D-	9		USB Data Minus

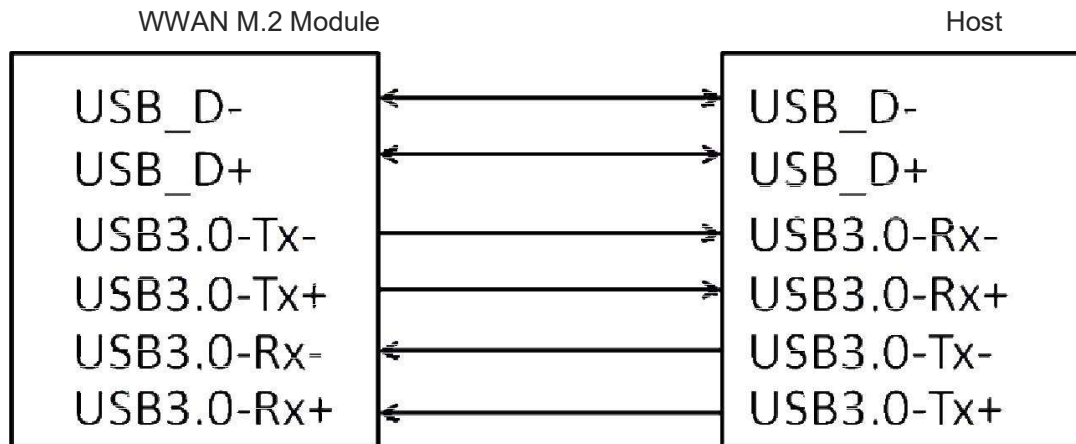
### 3.1.2. USB 3.0 Super-Speed

The USB controller of LN940 WWAN M.2 Module is also compliant with USB3.0 specification. It enables better transfer speed with improved bus use, duplex mode, than USB2.0.

**Table 3.1.2-1 USB 3.0 Interface**

Signal Name	Pin	Voltage Level	Description
USB_D+	7	Per USB3.0 Specification	USB Data Plus
USB_D-	9		USB Data Minus
USB3.0-Tx-	29		USB 3.0 Transmit Minus
USB3.0-Tx+	31		USB 3.0 Transmit Plus
USB3.0-Rx-	35		USB 3.0 Receive Minus
USB3.0-Rx+	37		USB 3.0 Receive Plus

When two are connected host is chosen to initiate and to control traffic on the USB bus.



## 3.2. USIM Interface

The USIM interface is fully compliant to the ISO/IEC 7816-3 specification

The USIM contains parameters necessary for the operation of WWAN radio environment.

**Table 3.2-1 USB 3.0 USIM Interface**

Signal Name	Pin	Voltage Level	Description
UIM_RESET	30	1.8V	UIM Reset signal
UIM_CLK	32	1.8V	UIM Clock signal
UIM_DATA	34	1.8V/2.85V	UIM Data signal
UIM_PWR	36	1.8V/2.85V	Power source for UIM
SIM_DETECT	66	1.8V	This is an indication to the modem to detect the SIM insertion/removal. It is usually connected to the SIM reader SW pin and is card type dependent

### 3.2.1. SIM Design Recommendations

- (1) It's recommended to take Electrostatic Discharge (ESD) protection measures near the USIM card socket.
- (2) The USIM socket shall be placed near the NGFF interface. The length of the traces shall not exceed 100mm.
- (3) The SIM\_DECECT signal is used to detect the insertion of and removal of SIM card from SIM socket.

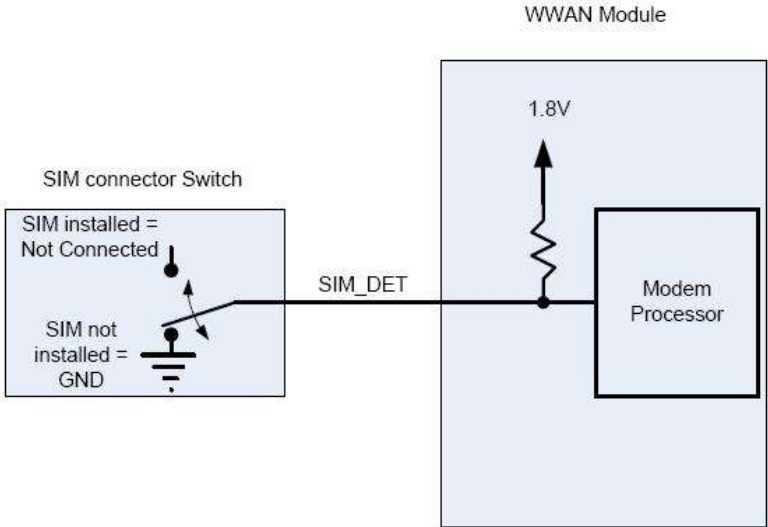
With a Normal Short SIM Card Connector, PUSH-PUSH type, the detect switch is normally shorted to the ground when no SIM card is inserted.

- a. When SIM card in inserted the SIM\_DETECT shall transition from Logic 0 state to Logic 1 state. The rising edge shall indicate the insertion of SIM card.
- b. When SIM card is removed from the socket the SIM\_DETECT shall transition from Logic 1 state and Logic 0 state. The falling edge shall indicate the removal of SIM card.
- c. This signal shall treat the rising or falling edge or actual logic state as an interrupt. Once triggered the LN940 WWAN M.2 module shall act accordingly.



- (4) The UIM\_PWR shall be turn ON 2 seconds after the SIM\_DETECT pin is asserted to High. This mechanism is to ensure the power is not turned ON before the SIM card is not seated well.

**Figure 3.2.1 USIM Design Recommendation**



### 3.3. System Control Interface

The system control interface is used to control the power-up and reset of the WWAN M.2 Module. There are additional control signals to disable the radio, drive the LED as status indicator, an output to wake up the host and an input trigger for body SAR

#### 3.3.1. Power On & Reset

The host platform has two signals to power on/off and reset the WWAN M.2 module

**Table 3.3-1 Power On & Reset Interface**

Signal Name	Pin	Voltage Level	Description
FULL_CARD_POWER_OFF	6	3.3 V or 1.8V	This is an "Active Low" pin. When the state is " <b>Low</b> " the M.2 module powers off, internally pulled down by 100K ohm resistor. When the state is "High" the M.2 module powers on and it should be 3.3 V tolerant. Also, 1.8V is supported as well.
RESET#	67	1.8V	Asynchronous RESET# pin is an "Active Low" pin. Whenever this active the M.2 module will immediately be taken and placed in the Power On reset condition. M.2 Module is NOT recommended to activate this pin unless there is a critical failure or all other approaches of regaining control and/or communication with M.2 Module have failed. It is recommended to install <b>one capacitor (10-100pF)</b> close to the M.2 module pin.

The design to the host is recommended as below,



### 3.3.2. Host Radio Disable Operation

Two additional control signals are used to disable the radio on the module. The signal `W_DISABLE#1` is allowed to disable the WWAN of and the signal `W_DISABLE#2` is allowed to disable the GPS of LN940 M.2 Module in order to meet public safety regulations or when otherwise desired implementation of this signal is required for systems and all add-in card that implement frequency capabilities.

**Table 3.3.2 Host Radio Disable Interface**

Signal Name	Pin	Voltage Level	Description
W_DISABLE#1	8	3.3V	This is an “Active Low” pin to disable the <b>WWAN</b> radio of LN940 M.2 Module. When the state is “ <b>Low</b> ” the M.2 module radio can be disabled and made incapable of transmitting. When the state is “ <b>High</b> ” the radio transmitter is to be made capable of transmitting, internally pulled up. The radio can also be toggled by software (AT commands).
W_DISABLE#2	26	3.3V	This is an “Active Low” pin to disable the <b>GPS</b> radio of LN940 M.2 Module. When the state is “ <b>Low</b> ” the M.2 module radio can be disabled and made incapable of transmitting. When the state is “ <b>High</b> ” the radio transmitter is to be made capable of transmitting, internally pulled up. The radio can also be toggled by software (AT commands).

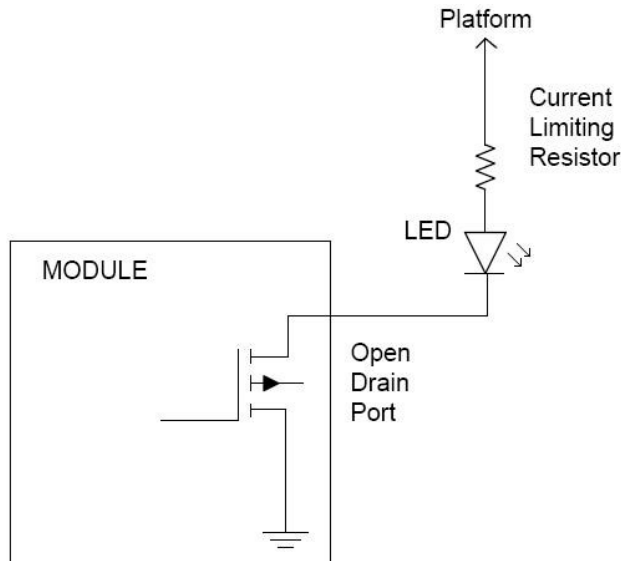
### 3.3.3. LED Interface – Status Indicator

The LED signal is provided to enable add-in card to provide the RF status indications to users via system-provided indicators.

**Table 3.3.3 Status LED Interface**

Signal Name	Pin	Voltage Level	Description
LED#1 (OD)	10	3.3V	This is an “Active Low” output signal intended to drive system-mounted LED indicators. When the state is “ <b>Low</b> ” the LED is lit to indicate radio capable of transmitting. When the state is “ <b>High</b> ” the LED is <u>NOT</u> lit to indicate radio incapable of transmitting.

**Figure 3.3.3 LED-to-host Design recommendation**



### 3.3.4. Wake on WWAN Signal

An output signal is available to wake the host platform, WAKE\_WWAN#. This is an active, open drain output, requiring a pull-up resistor on the host side.

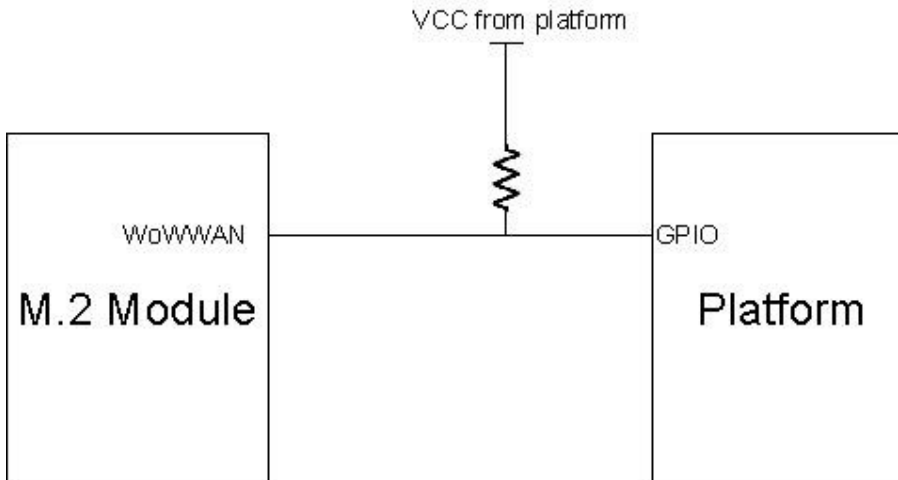
**Table 3.3.4 Wake on WWAN Interface**

Signal Name	Pin	Voltage Level	Description
Wake_WWAN#(OD)	10	1.8V	This is an “Active Low”, “Open Drain” output signal, used to wake the host

When the LN940 M.2 WWAN module is about to wake host an one second low pulse



**Table 3.3.4 host side design recommendation**



### 3.3.5. Dynamic Power Reduction

With the SAR (Specific Absorption Rate) regulatory requirement met for the design of Tablets and Ultrabooks in which the antenna is in the base of the unit the DPR# is available to trigger the reduction of radio transmit power.

The signal to DPR# is provided to trigger by the proximity sensor of the host.

The required value of the transmit power reduction may vary by different host designs. The assertion and deassertion of DPR is asynchronous to any system clock. All transients resulting from the proximity sensor is required to de-bounce by system circuitry.

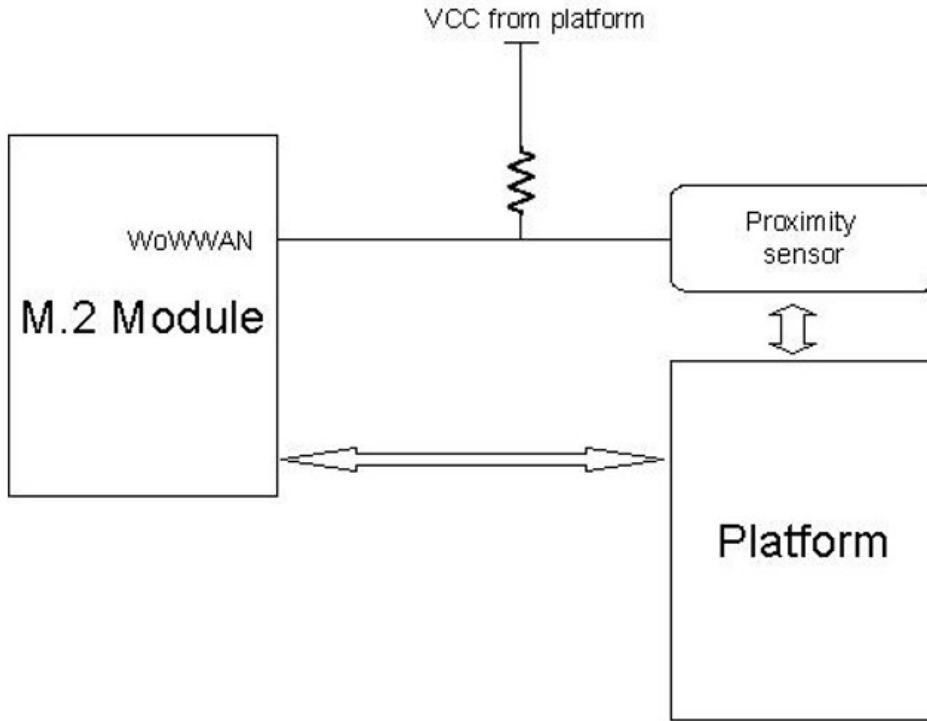
In conjunction with the DPR signal a full power control tool is available to the host to adjust the RF transmit power level of LN940 WWAN M.2 Module.

The DPR pin has 10Kohm pull-up resistor on the LN940 WWAN M.2 Module.

**Table 3.3.5 DPR interface**

Signal Name	Pin	Voltage Level	Description
DPR#	25	3.3V	This is an “ <b>Active Low</b> ”, input signal. When the state is “ <b>Low</b> ” the SAR power back off is enabled. When the state is “ <b>High</b> ” the SAR power back off is disabled, internally pulled up.

**Figure 3.3.5 DPR on host design recommendation**



### 3.4. Tunable Antenna Interface

In the notebook platforms since the WWAN antennas are usually located on the top of the lid there is a long RF mini-coax cable that can be up to 60cm long between the antennas and the WWAN M.2 module. It's preferred to use switches/tunable components directly on the antenna for antenna band switching or tuning for efficiency improvement.

Four GPIO pins are available on the host interface that can be connected to an external antenna switch, to load the antenna with different impedances, and to configure the different frequency responses for the main antenna

**Table 3.4-1 Tunable Antenna GPIO interface**

Signal Name	Pin	Voltage Level	Description
ANTCTL0	59	1.8V	Antenna Control 0
ANTCTL1	61	1.8V	Antenna Control 1
ANTCTL2	63	1.8V	Antenna Control 2
ANTCTL3	65	1.8V	Antenna Control 3



Alternatively two MIPI signals are also available to configure the external antenna tuner.

**Table 3.4-1 Tunable Antenna MIPI Interface**

Signal Name	Pin	Voltage Level	Description
MIPI_CLK	56	1.8V	MIPI Clock
MIPI_DATA	58	1.8V	MIPI Data

The SW tool is available configure the table of antenna tuner parameters.

### 3.5. In-Device Coexistence Interface

As more and more radios are added to notebook and tablet the source of RF interference increases significantly as multiple radios will have overlapping transmissions and receptions. This problem will increase further as overlapping bands continue to be rolled out. WLAN, BT, WWAN will all use overlapping bands, ranging from 2300Mhz to 2600Mhz.

In-Device Coexistence is a feature which improves the user experience and maximizes throughput and QoS of connectivity systems (WLAN, BT and GNSS) when these radios are simultaneously running with the WWAN M.2 LTE modem.

These three COEX interfaces are provided to implement In-device wireless coexistence solution.

**Table 3.5 In device coexistence Interface**

Signal Name	Pin	Voltage Level	Description
COEX3	60	1.8V	LTE_ACTIVE (COEX_TXD)
COEX2	62	1.8V	LTE_FRAME_SYNC (COEX_RXD)
COEX1	64	1.8V	LTE_ACTIVE (COEX_TXD)

### 3.6. Power Supply Interface

The WWAN M.2 Module requires the host to provide the 3.3V power source.  
The 3.3V power and ground pins are listed in Table

**Table 3.6 Power supply Interface**

Power Pins	Description
2, 4, 70,72, 74	3.3V
3, 5, 11, 27, 33, 39, 45, 51, 57, 71, 73	Ground

### 3.7. Configuration Pins

There are 4 Configuration pins on the WWAN M.2 Module to assist the host identifying the presence of an Add-In card in the socket.

All configuration pins can be read and decoded by the host platform to recognize the indicated module configuration and host interface supported.

**Table 3.7 configuration Interface**

Item	Module Configuration Decode				Module Type	Port Configuration
Signal Name	CONFIG_0	CONFIG_1	CONFIG_2	CONFIG_3	WWAN-USB3.0	0
Pin	21	69	75	1		
State	GND	GND	GND	GND		

### 3.8. Antenna Interface

The M.2 module has two antenna connectors to support a Tx/PRx antenna and a secondary antenna that will be multiplexed between the diversity receiver and GNSS receiver.

The antenna signals are not available at the host interface but have their own connectors.

## 4. OPERATING ENVIRONMENT

Table 6 Recommended Operating Conditions

Parameter	Min.	Typical	Max.
Storage Temperature	-30°C	25°C	85°C
Recommended Operating Temperature (3GPP Compliant)	-10°C	25°C	55°C
Restricted Operating Temperature (*1) (Operational, non-3GPP Compliant)	-20°C	25°C	70°C
Extendable (with Limited Performance)(*2)	-40°C	N/A	85°C
<b>Operating Voltage</b>	<b>3.135 V</b>	<b>3.3V</b>	<b>4.4V</b>

(\*1) Restricted Operation allows normal mode data transmission for limited time until automatic thermal shutdown takes effect. Within the restricted temperature range (outside the operating temperature range) the specified electrical characteristics may be increased or decreased

(\*2) A tolerance on the stated shutdown threshold may occur. The deviation is in the range of +/-2°C at the limits of over temperature and under temperature.

It may damage the M.2 Module when it is being operated under the condition beyond its absolute maximum ratings (Table 7-1). Absolute maximum ratings are limiting values to be considered individually when all other parameters are within their specified operating ranges. Functional operation and specification compliance under any absolute maximum condition, or after exposure to any of these conditions, is not guaranteed or implied.

## 5. POWER DELIVERY REQUIREMENTS

### 5.1. Electrical Parameters (3.3 V Power Supply)

M.2 Module utilizes a single regulated power rail of 3.3V provided by the host platform.

Parameter	Min.	Typical	Max.	Units
Operating Voltage	3.135*	3.3	4.4	Vcc

(\*) The minimum voltage supplied to M.2 module by the host platform has to be 3.135 V. With voltage supplied below 3.135 V the M.2 module may shut off abnormally and the RF performance cannot be guaranteed.

## 5.2. Power Consumption

< ALL data below is reference only, to be updated in July >

USE Scenario	Sample Test	Targeted Value (Typical)	Targeted Value (Max)
WCDMA in Suspend mode	TBD	<5mA	
WCDMA (Tx=24dBm)	TBD	<800mA	<1100mA
LTE in Suspend mode	TBD	<5mA	
LTE (16QAM) Tx=23 dBm	TBD	<900mA	<1200mA
LTE CA Mode, Tx=23dBm	TBD	<1100mA	<1500mA
GPS/GNSS Tracking	TBD	<150mA	<300mA
Connected Standby	TBD	<3mA	
Radio Off	TBD	<3mA	

## 6. OTHER REQUIREMENTS

### 6.1. Conducted Transmit Power

**Table 8-4 Maximum Conducted Transmit Power  
(ACLR > 5dB margin @room temperature)**

Condition	Operating Bands	Tx Design Requirement	Tx Manufacturing Requirement
E-UTRA Class 3	1,2,3(9),4,5,(18/19/26),7/8/ 12(17)/13/20/21/25/28/29/30/ 38/39/40/41	23dBm +/- 1dB	23dBm +/- 1dB
W-CDMA Class 3	1,2,4,5,8	23.5dBm +/-1dB	23.5dBm +/-1dB

### 6.2. Receiver Sensitivity

**Table 8-5 Minimum Conducted Receiver Sensitivity (10Mhz LTE BW)**

LTE Band	PRx (dBm)	DRx (dBm)	MIMO Combined (dBm)
1	-97.5	-97	-100
2	-98	-97	-100
3	-98.5	-97	-100
4	-97	-97	-100
5	-99	-100	-102
7	-98.5	-97	-100
8	-99.5	-99.5	-102.5
12	-99	-99	-102
13	-99	-98.5	-101.5
17	-99	-99	-102
18	-99	-99	-102

19	-99	-99	-102
20	-99	-98.5	-101.5
21	-98	-98	-101
25	-98	-97	-100
26	-99	-99	-102
28	-98.5	-99	-101
29	-98	-98	-101
30	-97	-96.5	-100
38	-97.5	-97	-100.5
39	-98	-98	-100
40	-97	-97	-100
41	-97.5	-96	-99
66	-97	-97	-100

**Table 8-5-2 Minimum Conducted Receiver Sensitivity (WCDMA)**

WCDMA Band	PRx (dBm)	DRx (dBm)	MIMO Combined (dBm)
1	-109	-109	-112
2	-109	-109	-112
3	-109	-109	-112
4	-109	-109	-112
5(6/19)	-110	-110	-113
8	-110	-110	-113



### 6.3. Antenna Recommendations

The antenna elements are typically intergraded into the notebook and tablet with connection to LN940 WWAN M.2 module by flexible RF coaxial cables.

Type of two RF antenna receptacles of LN940 WWAN M.2 module is MHF – MAIN port is for primary transmitter and receiver and AUX port is for diversity receiver and GNSS.

To assure the RF performance the following antenna guidance shall be followed by platform designers.

**Table 8.6-1 Main Antenna Design Guideline**

Parameter	Min.	Typical	Max.	Units	Description
Cable Loss	/	/	50	dB	Maximum loss to antenna
Impedance	/	50	/	Ohm	Antenna load impedance
VSWR	/	/	3:1	/	Maximum VSWR of antenna allowed

**Table 8.6-2 Aux Antenna Design Guideline**

Parameter	Description
Gain	Maximum gain and uniform coverage in high angle elevation and zenith. Gain in the azimuth is not desired
Average 3D Gain	It has to be greater than 5dBi
VSWR	Typical Value has to be less than 3:1
Isolation (Diversity/AUX to MAIN)	It has to be greater than 10dB in all related bands
Polarization	Any

## 6.4. GNSS Sensitivity

**Table 8-7 Minimum Conducted Receiver Sensitivity (GNSS)**

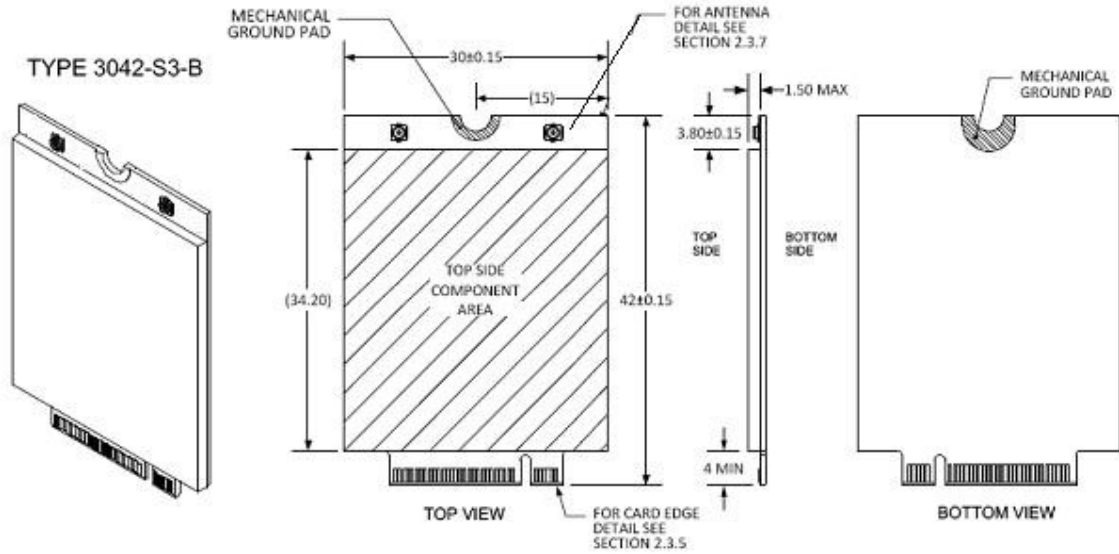
GNSS	Design Requirement (dBm)
Tracking Sensitivity	-152

## 7. WWAN CARD TYPE 3042

### 7.1. Mechanical Dimension

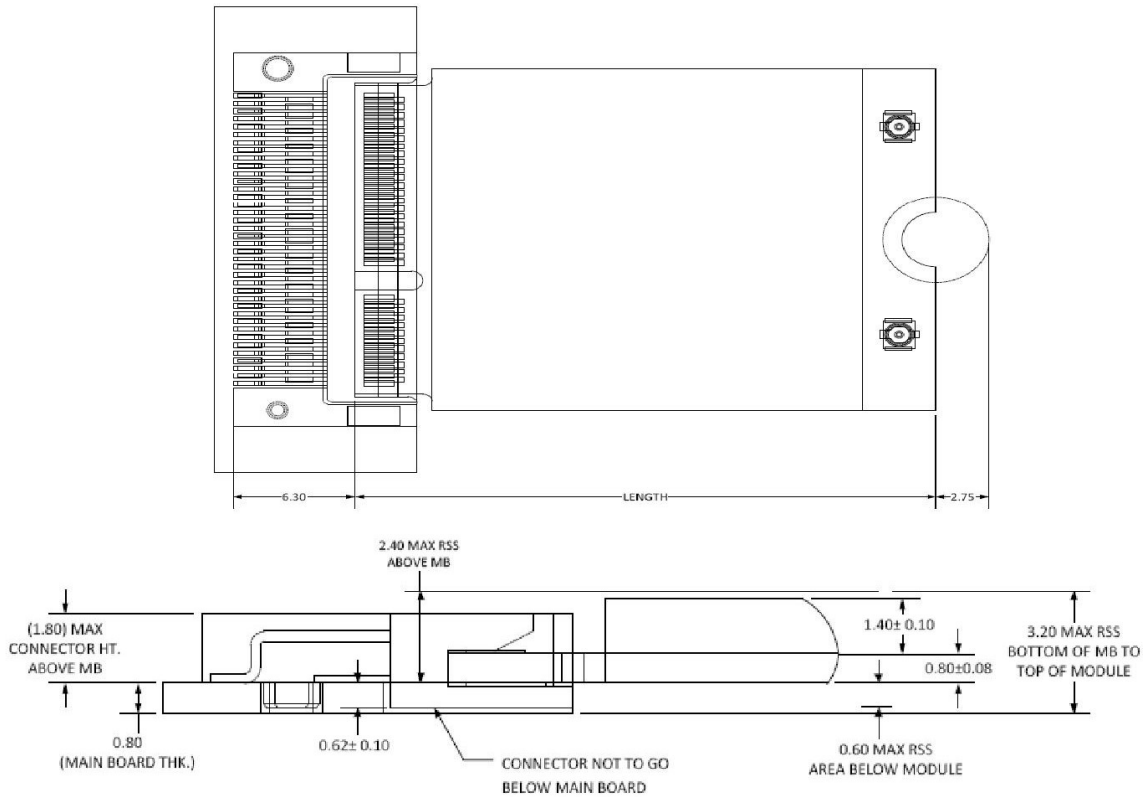
LN940 WWAN M.2 module is compatible with the PCI Express M.2 specification.

Figure Mechanical Dimension



## 7.2. LN940 WWAN M.2 Module Assembly

Figure Stackup Mid-Line (In-Line) Single Sided Module



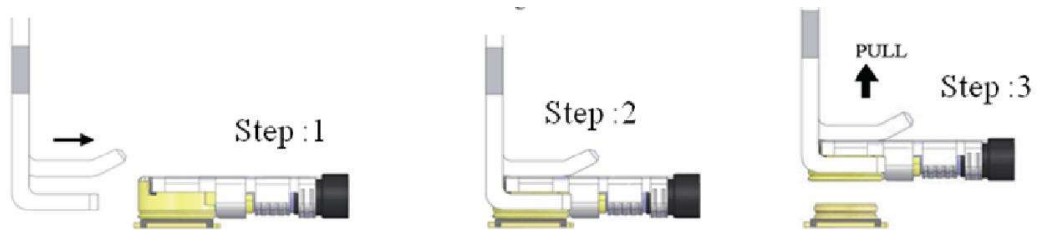
- (1) 2.4mm maximum above motherboard
- (2) Cut area of main board under M.2 module
- (3) Need to add thermal pad between M.2 Module and mechanical component for thermal dissipation

### 7.3. Antenna Connector Assembly

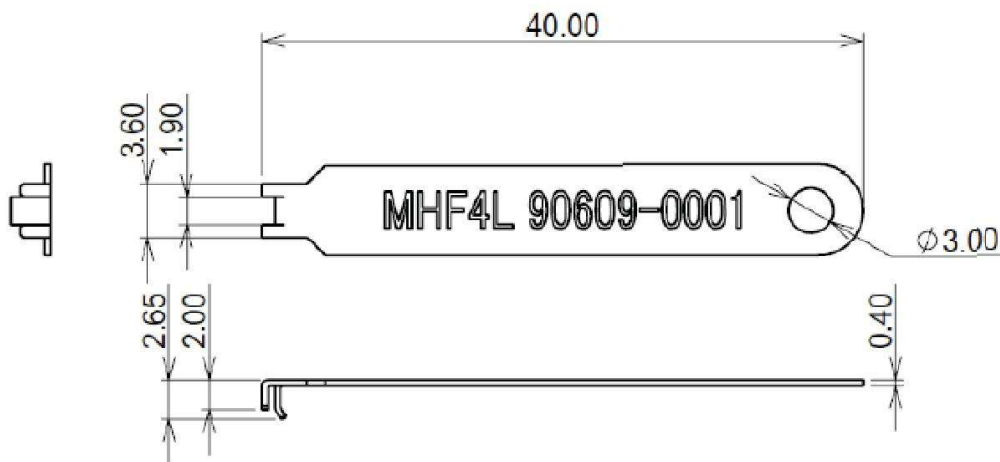
- (1) Mating the connector vertically as much as possible. Adjusting the mating axis of plug and receptacle. Do NOT slant mate.



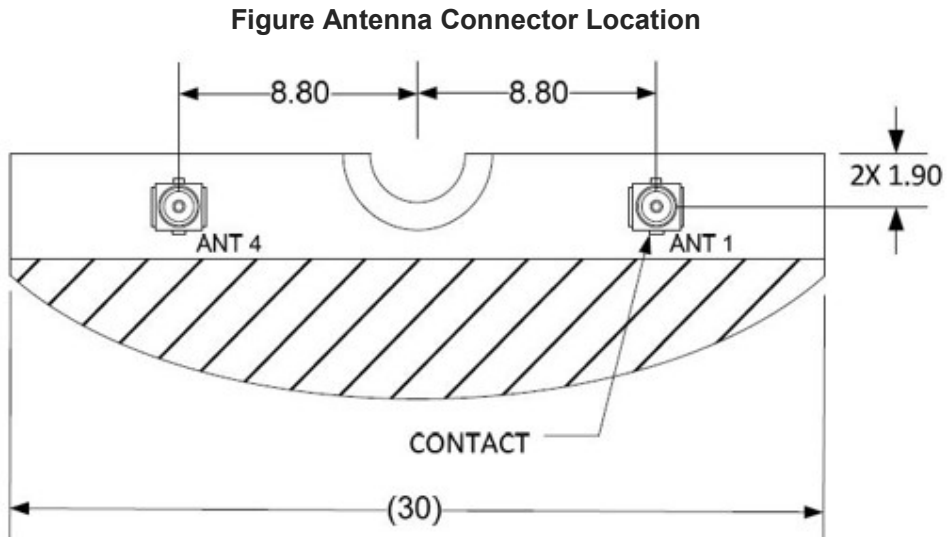
- (2) Unmating: In case of unmating by pulling gadget (see below). Pulling plug in vertical direction.



- (3) Pulling Gadget is shown below (Unit: mm)



## 7.4. Antenna Connector Locations



**Table Antenna Connector Assignment**

Antenna	Interface
0	N/A
1	WWAN Main TX/RX
2	N/A
3	N/A
4	WWAN AUX RX/GNSS
5	N/A

Figure. RF Connector Specification

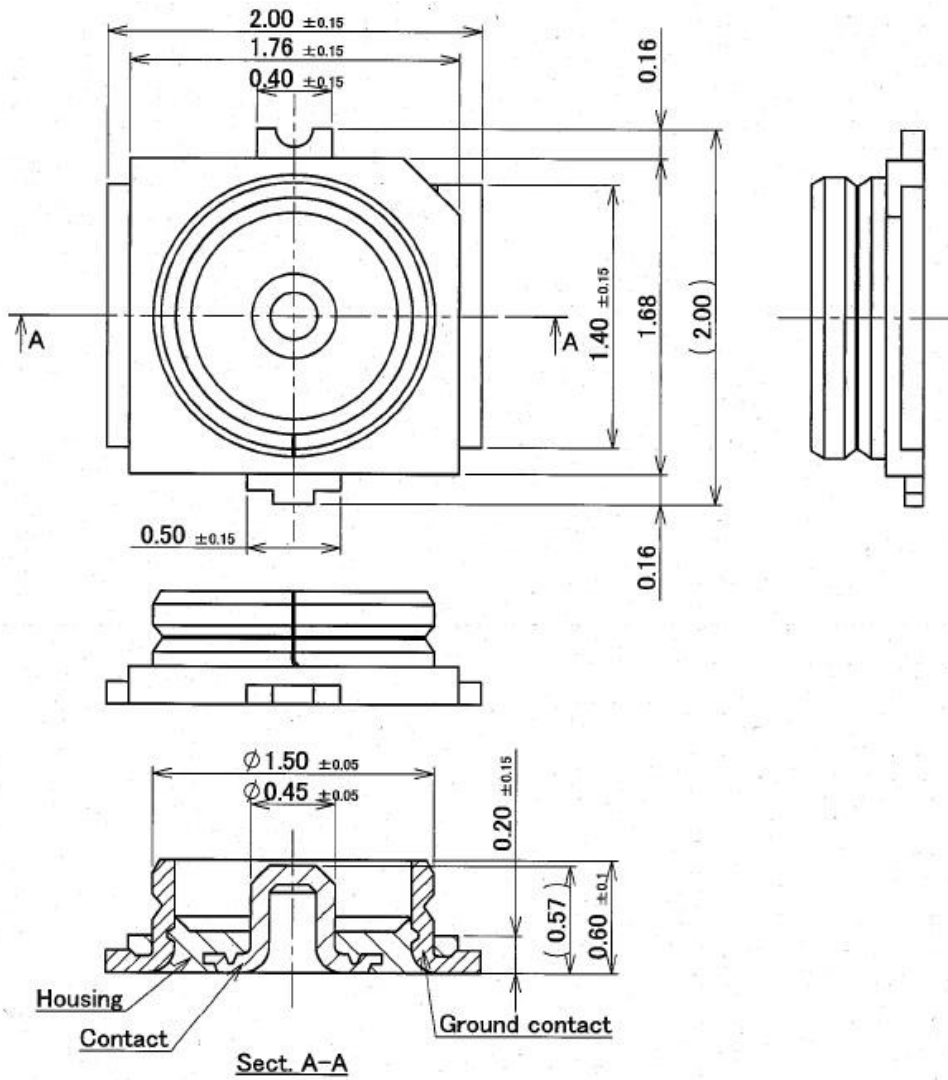
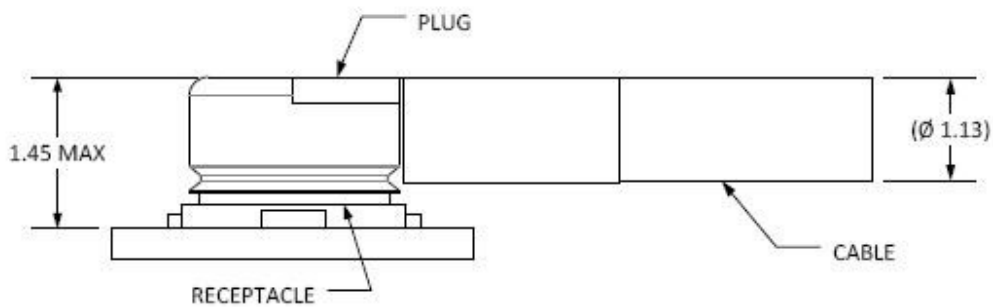


Figure RF Receptacles Specification



Mated Plug for  $\phi 1.13 \text{ mm}$  Coax Cable

PLUG

## 8. SAFETY RECOMMENDATIONS

### 8.1. READ CAREFULLY

Be sure the use of this product is allowed in the country and in the environment required. The use of this product may be dangerous and has to be avoided in the following areas:

- Where it can interfere with other electronic devices in environments such as hospitals, airports, aircrafts, etc.
- Where there is risk of explosion such as gasoline stations, oil refineries, etc. It is the responsibility of the user to enforce the country regulation and the specific environment regulation.

Do not disassemble the product; any mark of tampering will compromise the warranty validity. We recommend following the instructions of the hardware user guides for correct wiring of the product. The product has to be supplied with a stabilized voltage source and the wiring has to be conformed to the security and fire prevention regulations. The product has to be handled with care, avoiding any contact with the pins because electrostatic discharges may damage the product itself. Same cautions have to be taken for the SIM, checking carefully the instruction for its use. Do not insert or remove the SIM when the product is in power saving mode.

The system integrator is responsible for the functioning of the final product; therefore, care has to be taken to the external components of the module, as well as any project or installation issue, because the risk of disturbing the GSM network or external devices or having impact on the security. Should there be any doubt, please refer to the technical documentation and the regulations in force. Every module has to be equipped with a proper antenna with specific characteristics. The antenna has to be installed with care in order to avoid any interference with other electronic devices and has to guarantee a minimum distance from the body (20 cm). In case this requirement cannot be satisfied, the system integrator has to assess the final product against the SAR regulation.

The European Community provides some Directives for the electronic equipment introduced on the market. All of the relevant information is available on the European Community website:

<http://ec.europa.eu/enterprise/sectors/rtte/documents/>

The text of the Directive 99/05 regarding telecommunication equipment is available,

while the applicable Directives (Low Voltage and EMC) are available at:

<http://ec.europa.eu/enterprise/sectors/electrical/>





---

---

---

---

---

---

---

## 10. DOCUMENT HISTORY

---

Revision	Date	Changes
0.1	2017-01-13	First issue (Preliminary)
1	2015-06-26	RF sensitivity updated, CA configurations updated

---

## **Federal Communication Commission Interference Statement**

This device complies with Part 15 of the FCC Rules. Operation is subject to the following two conditions: (1) This device may not cause harmful interference, and (2) this device must accept any interference received, including interference that may cause undesired operation.

This equipment has been tested and found to comply with the limits for a Class B digital device, pursuant to Part 15 of the FCC Rules. These limits are designed to provide reasonable protection against harmful interference in a residential installation. This equipment generate, uses and can radiate radio frequency energy and, if not installed and used in accordance with the instructions, may cause harmful interference to radio communications. However, there is no guarantee that interference will not occur in a particular installation. If this equipment does cause harmful interference to radio or television reception, which can be determined by turning the equipment off and on, the user is encouraged to try to correct the interference by one of the following measures:

- Reorient or relocate the receiving antenna.
- Increase the separation between the equipment and receiver.
- Connect the equipment into an outlet on a circuit different from that to which the receiver is connected.
- Consult the dealer or an experienced radio/TV technician for help.

**FCC Caution:** Any changes or modifications not expressly approved by the party responsible for compliance could void the user's authority to operate this equipment.

This transmitter must not be co-located or operating in conjunction with any other antenna or transmitter.

### **Radiation Exposure Statement:**

This equipment complies with FCC radiation exposure limits set forth for an uncontrolled environment. This equipment should be installed and operated with minimum distance 20cm between the radiator & your body.

This device is intended only for OEM integrators under the following conditions:

The antenna must be installed such that 20 cm is maintained between the

antenna and users, and

The transmitter module may not be co-located with any other transmitter or antenna.

As long as 2 conditions above are met, further transmitter test will not be required. However, the OEM integrator is still responsible for testing their end-product for any additional compliance requirements required with this module installed

**IMPORTANT NOTE:** In the event that these conditions can not be met (for example certain laptop configurations or co-location with another transmitter), then the FCC authorization is no longer considered valid and the FCC ID can not be used on the final product. In these circumstances, the OEM integrator will be responsible for re-evaluating the end product (including the transmitter) and obtaining a separate FCC authorization.

### **End Product Labeling**

This transmitter module is authorized only for use in device where the antenna may be installed such that 20 cm may be maintained between the antenna and users. The final end product must be labeled in a visible area with the following: **“Contains FCC ID: R17LN940A9”**. The grantee's FCC ID can be used only when all FCC compliance requirements are met.

### **Manual Information To the End User**

The OEM integrator has to be aware not to provide information to the end user regarding how to install or remove this RF module in the user's manual of the end product which integrates this module.

The end user manual shall include all required regulatory information/warning as show in this manual.

### **Industry Canada statement:**

This device complies with ISED's licence-exempt RSSs. Operation is subject to the following two conditions: (1) This device may not cause harmful interference, and (2) this device must accept any interference received, including interference that may cause undesired operation.

Le présent appareil est conforme aux CNR d' ISED applicables aux appareils radio exempts de licence. L'exploitation est autorisée aux deux conditions suivantes : (1) le dispositif ne doit pas produire de brouillage préjudiciable, et

(2) ce dispositif doit accepter tout brouillage reçu, y compris un brouillage susceptible de provoquer un fonctionnement indésirable.

**Radiation Exposure Statement:**

This equipment complies with ISED radiation exposure limits set forth for an uncontrolled environment. This equipment should be installed and operated with minimum distance 20cm between the radiator & your body.

**Déclaration d'exposition aux radiations:**

Cet équipement est conforme aux limites d'exposition aux rayonnements ISED établies pour un environnement non contrôlé. Cet équipement doit être installé et utilisé avec un minimum de 20 cm de distance entre la source de rayonnement et votre corps.

**This device is intended only for OEM integrators under the following conditions:**

(For module device use)

- 1) The antenna must be installed such that 20 cm is maintained between the antenna and users, and
- 2) The transmitter module may not be co-located with any other transmitter or antenna.

As long as 2 conditions above are met, further transmitter test will not be required. However, the OEM integrator is still responsible for testing their end-product for any additional compliance requirements required with this module installed.

**Cet appareil est conçu uniquement pour les intégrateurs OEM dans les conditions suivantes:** (Pour utilisation de dispositif module)

- 1) L'antenne doit être installée de telle sorte qu'une distance de 20 cm est respectée entre l'antenne et les utilisateurs, et
- 2) Le module émetteur peut ne pas être coïmplanté avec un autre émetteur ou antenne.

Tant que les 2 conditions ci-dessus sont remplies, des essais supplémentaires sur l'émetteur ne seront pas nécessaires. Toutefois, l'intégrateur OEM est toujours responsable des essais sur son produit final pour toutes exigences de conformité supplémentaires requis pour ce module installé.

**IMPORTANT NOTE:**

In the event that these conditions can not be met (for example certain laptop configurations or co-location with another transmitter), then the Canada authorization is no longer considered valid and the IC ID can not be used on

the final product. In these circumstances, the OEM integrator will be responsible for re-evaluating the end product (including the transmitter) and obtaining a separate Canada authorization.

**NOTE IMPORTANTE:**

Dans le cas où ces conditions ne peuvent être satisfaites (par exemple pour certaines configurations d'ordinateur portable ou de certaines co-localisation avec un autre émetteur), l'autorisation du Canada n'est plus considéré comme valide et l'ID IC ne peut pas être utilisé sur le produit final. Dans ces circonstances, l'intégrateur OEM sera chargé de réévaluer le produit final (y compris l'émetteur) et l'obtention d'une autorisation distincte au Canada.

**End Product Labeling**

This transmitter module is authorized only for use in device where the antenna may be installed such that 20 cm may be maintained between the antenna and users. The final end product must be labeled in a visible area with the following: "Contains IC: 5131A-LN940A9".

**Plaque signalétique du produit final**

Ce module émetteur est autorisé uniquement pour une utilisation dans un dispositif où l'antenne peut être installée de telle sorte qu'une distance de 20cm peut être maintenue entre l'antenne et les utilisateurs. Le produit final doit être étiqueté dans un endroit visible avec l'inscription suivante: "Contient des IC: 5131A-LN940A9".

**Manual Information To the End User**

The OEM integrator has to be aware not to provide information to the end user regarding how to install or remove this RF module in the user's manual of the end product which integrates this module.

The end user manual shall include all required regulatory information/warning as show in this manual.


**Manuel d'information à l'utilisateur final**

L'intégrateur OEM doit être conscient de ne pas fournir des informations à l'utilisateur final quant à la façon d'installer ou de supprimer ce module RF dans le manuel de l'utilisateur du produit final qui intègre ce module.

Le manuel de l'utilisateur final doit inclure toutes les informations réglementaires requises et avertissements comme indiqué dans ce manuel.

## 低功率電波輻射性電機管理辦法

本模組於取得認證後將依規定於模組本體標示審驗合格標籤。

2. 系統廠商應於平台上標示「本產品內含射頻模組：XXXyyyLPDzzzz-x」字樣。

電磁波警語標示：「減少電磁波影響，請妥適使用」。

標示方式：必須標示於設備本體適當位置及設備外包裝及使用說明書上。

「電