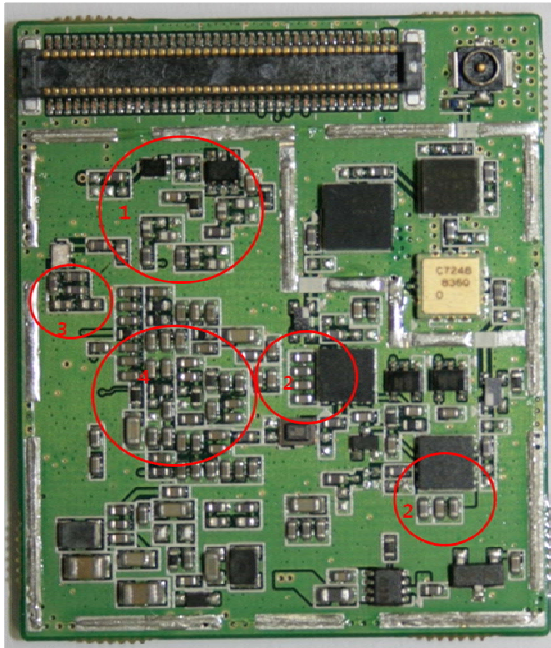


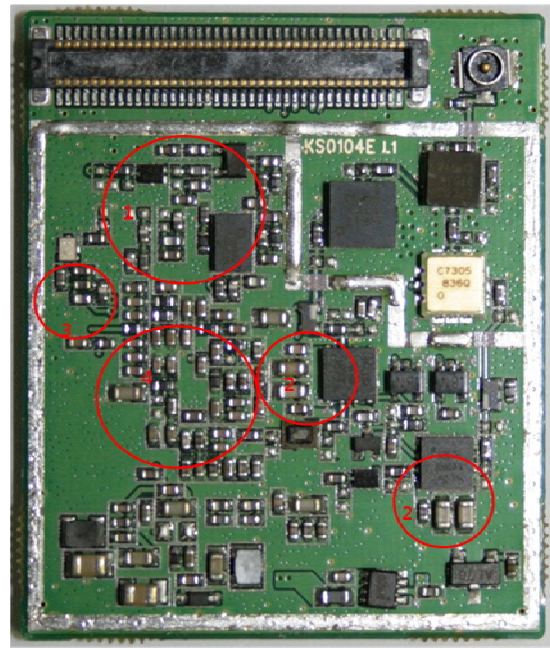
Changed item

FCC ID : RI7CC864-DUAL

Before change(picture)



After change(picture)

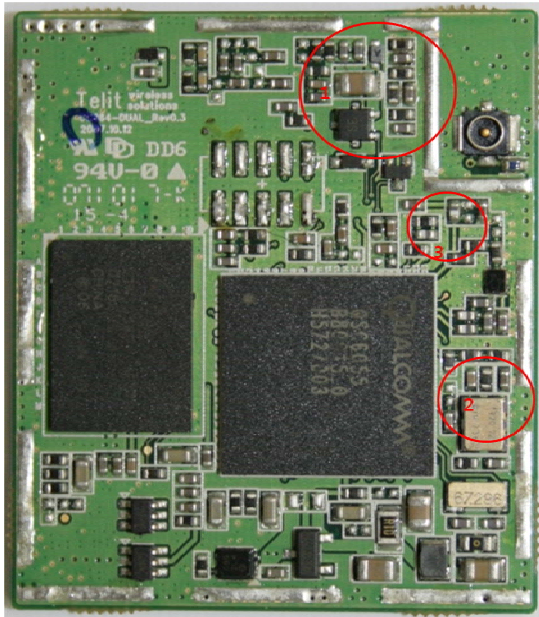


Before change(explanation)

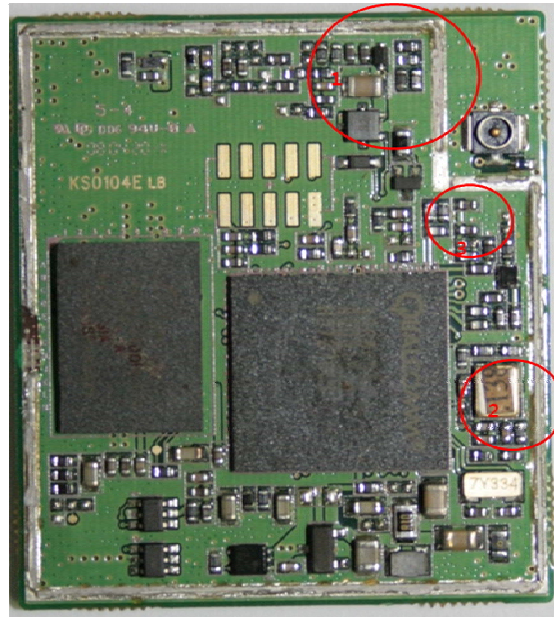
After change(explanation)

1. Added GPS external LNA and filter.
2. Changed capacitor size.(0402 -> 0805).
3. Changed device arrangement.
4. Changed device arrangement.

Before change(picture)



After change(picture)



Before change(explanation)

After change(explanation)

1. Changed device arrangement and added a varistor.
2. Changed device arrangement.
3. Changed device arrangement(rotated 180°)